

## COVID-19 Trends, Clark County, NV

### (FOR OFFICIAL USE ONLY)

Document creation date: February 1, 2024

#### Technical Notes:

- **General notes:** This report uses surveillance data collected by the Southern Nevada Health District. Due to delays related to laboratory processing, reporting, and case investigations, data from the most recent days are less complete than data from older time points. For this reason, as of June 10, 2020 this report will not display data from the previous three days prior to the date that the report was created. As many case investigations are ongoing, all data presented in this report are considered preliminary and subject to change. Data regarding cases, hospitalizations, deaths, and labs were last updated February 1, 2024 at 12:00 AM, and data is reported up through January 31, 2024.
- **Cases:** Symptom onset date was used for aggregating cases. If symptom onset date was missing, the following dates were substituted in this order: diagnosis date, lab collection date, report date (date case was reported to SNHD), event creation date (date case was entered into EpiTrax, SNHD's surveillance system).
- **Hospitalizations:** Admission date reported the the Nevada Hospital Association was used for aggregating hospitalizations. One person could have more than one admissions.
- **Hospital admission levels** were based on 7-day total of new COVID-19 hospital admissions per 100,000 population: high means greater than or equal to 20.0 per 100,000, medium means less than 20.0 but greater than or equal to 10.0 per 100,000, low means less than 10.0 per 100,000.
- **Deaths:** Date of death was used for aggregating deaths. If date of death was missing, report date was used.
- The population data source for calculating rate estimates was from Nevada State Demographer "2019 ASRHO Estimates and Projections Summary 2000 to 2038", 2020 projection, vintage 2019. Rates for individual age categories may be based on small numbers, which may give unstable estimates.

- The "Percent Change in Weekly Totals from Previous Week" graph and table display the percentage change in weekly totals of cases, hospitalizations, and deaths from the previous weekly totals. For the purpose of calculating weekly totals, weeks start on Monday and end on Sunday. A particular week will only be displayed in the report if data of every day in that week has been released. For example, if the report was created on June 10, 2020, the last day of reported data will be from Saturday June 6. Since data is only available for six of the seven days in that particular week, that week will not be included in the report.
- All graphs in this report show data from approximately 60 days prior to the date of the report.
- All tables show data from the last 14 days before the current date, with the exception of the "Percent Change in Weekly Totals from Previous Week", which displays data from the previous eight completed weeks.
- For the "Percent of People Receiving COVID-19 PCR Tests Who Have Positive Results" graph, one person who has multiple specimens collected in one day is only reported once. If any test of that person is positive, that person counts as a positive result. If all tests of that individual are negative, that person counts as a negative result. Laboratory tests were included if they were a test assessing for the presence of SARS-CoV-2 viral RNA, for example PCR tests. Antibody and antigen tests were excluded.
- For the "Percent of Total COVID-19 PCR Tests With Positive Results" graph, the numerator is the total number of positive tests, and the denominator is the total number of tests performed. Multiple tests are possible for each individual per day if more than one sample was collected. Laboratory tests were included if they were a test assessing for the presence of SARS-CoV-2 viral RNA, for example PCR tests. Antibody and antigen tests were excluded. Laboratory test results were included if they were reported electronically by laboratories or providers. Tests were excluded if entered by SNHD surveillance staff manually, as surveillance staff do not typically enter negative results, and this would bias the results of the graph in the positive direction.
- Syndromic Surveillance: Data source is the Electronic Surveillance System for the Early Notification of Community-based Epidemics (ESSENCE) Nevada. These data capture the Percent of emergency department visits that could presumptively be related to COVID-19 at non-federal acute care hospitals in Clark County. This includes visits where 1) the chief complaint of the patient was a symptom of coronavirus-like illness (i.e., fever and chills, cough, shortness of breath); or 2) a patient was diagnosed with symptoms of coronavirus-like illness; or 3) a patient was diagnosed with COVID-19. Visits among patients who were diagnosed with Influenza were excluded.

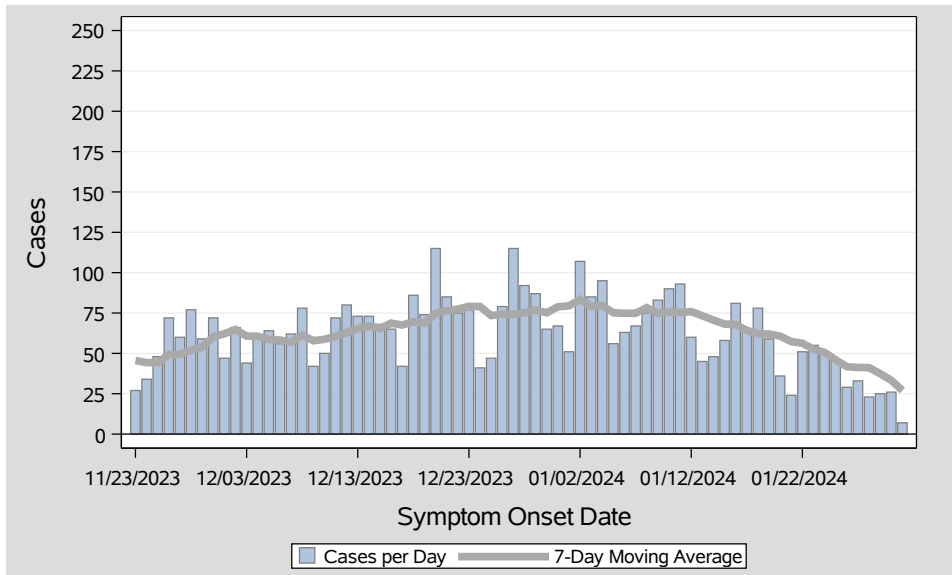


Table 1: COVID-19 Cases per Day, Clark County, NV

Date	Cases Per Day	7-Day Moving Average
Jan 15	58	68.1
Jan 16	81	67.9
Jan 17	65	64.3
Jan 18	78	62.1
Jan 19	59	62.0
Jan 20	36	60.7
Jan 21	24	57.3
Jan 22	51	56.3
Jan 23	55	52.6
Jan 24	51	50.6
Jan 25	46	46.0
Jan 26	29	41.7
Jan 27	33	41.3
Jan 28	23	41.1
Jan 29	25	37.4
Jan 30	26	33.3
Jan 31	7	27.0

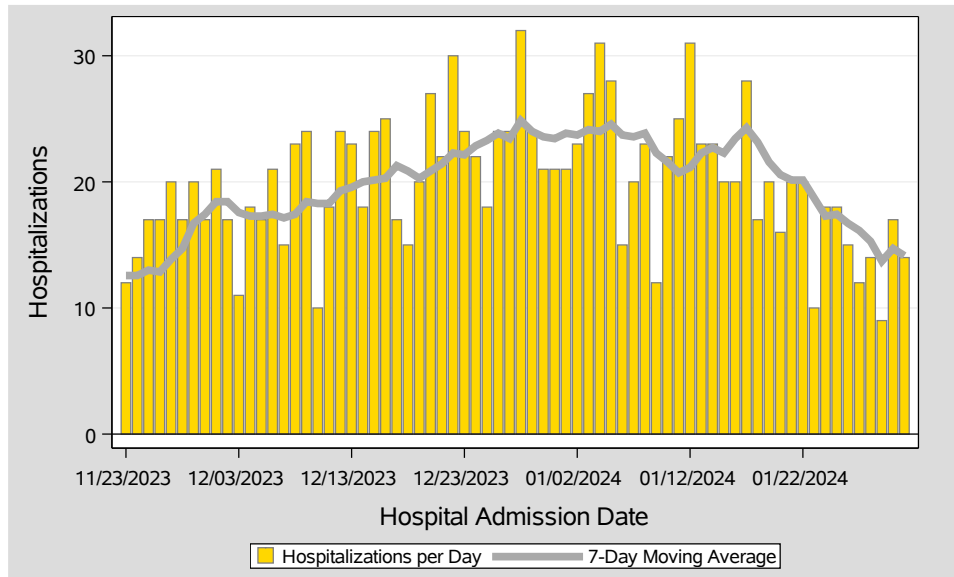


Table 2: COVID-19 Hospitalizations per Day, Clark County, NV

Date	Hospitalizations Per Day	7-Day Moving Average	7-Day Total Hospitalizations per 100K	Hospital Admission Level
Jan 15	20	22.3	6.73	Low
Jan 16	20	23.4	7.07	Low
Jan 17	28	24.3	7.33	Low
Jan 18	17	23.1	6.99	Low
Jan 19	20	21.6	6.51	Low
Jan 20	16	20.6	6.21	Low
Jan 21	20	20.1	6.08	Low
Jan 22	20	20.1	6.08	Low
Jan 23	10	18.7	5.65	Low
Jan 24	18	17.3	5.22	Low
Jan 25	18	17.4	5.26	Low
Jan 26	15	16.7	5.05	Low
Jan 27	12	16.1	4.87	Low
Jan 28	14	15.3	4.62	Low
Jan 29	9	13.7	4.14	Low
Jan 30	17	14.7	4.44	Low
Jan 31	14	14.1	4.27	Low

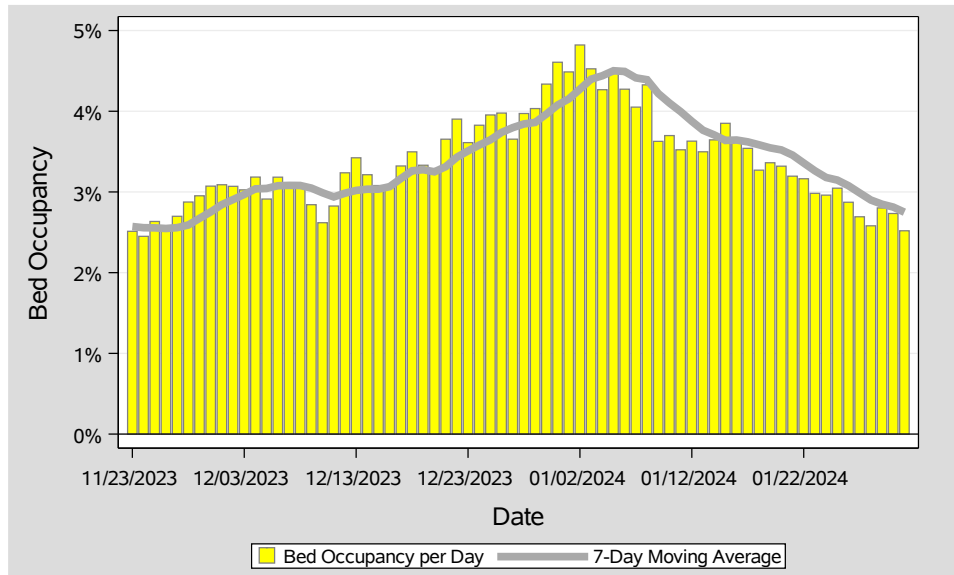


Table 3: Percent of Bed Occupancy per Day, Clark County, NV

Date	Bed Occupancy Per Day	7-Day Moving Average
Jan 15	3.85%	3.64%
Jan 16	3.66%	3.64%
Jan 17	3.54%	3.62%
Jan 18	3.27%	3.58%
Jan 19	3.36%	3.55%
Jan 20	3.32%	3.52%
Jan 21	3.20%	3.46%
Jan 22	3.16%	3.36%
Jan 23	2.98%	3.26%
Jan 24	2.96%	3.18%
Jan 25	3.05%	3.15%
Jan 26	2.87%	3.08%
Jan 27	2.69%	2.99%
Jan 28	2.58%	2.90%
Jan 29	2.80%	2.85%
Jan 30	2.73%	2.81%
Jan 31	2.52%	2.75%

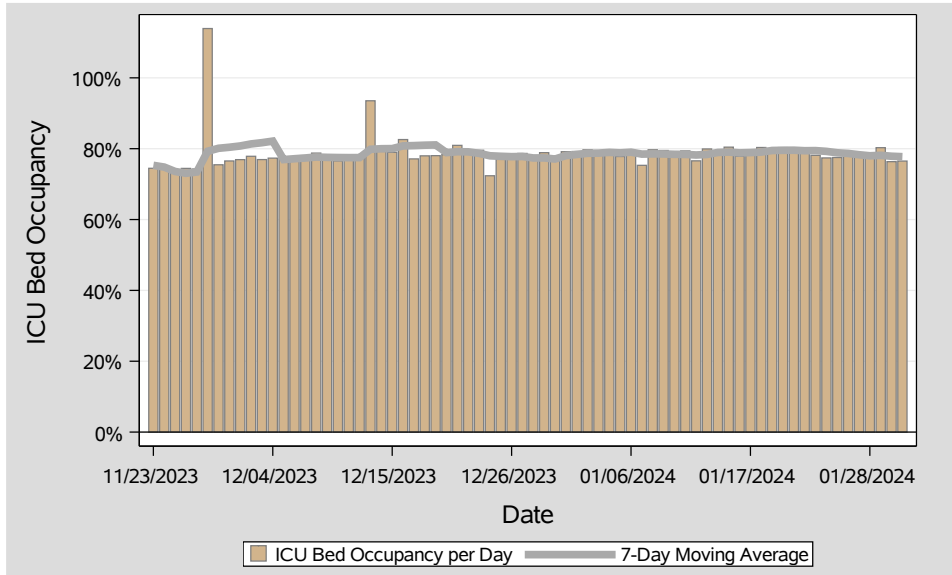


Table 4: Percent of ICU Bed Occupancy per Day, Clark County, NV

Date	ICU Bed Occupancy Per Day	7-Day Moving Average
Jan 15	80.44%	79.04%
Jan 16	77.89%	78.82%
Jan 17	78.92%	78.90%
Jan 18	80.34%	79.04%
Jan 19	79.73%	79.50%
Jan 20	80.32%	79.55%
Jan 21	79.39%	79.57%
Jan 22	79.41%	79.43%
Jan 23	78.12%	79.46%
Jan 24	77.40%	79.24%
Jan 25	77.51%	78.84%
Jan 26	78.49%	78.66%
Jan 27	77.71%	78.29%
Jan 28	77.37%	78.00%
Jan 29	80.29%	78.13%
Jan 30	76.34%	77.87%
Jan 31	76.51%	77.75%

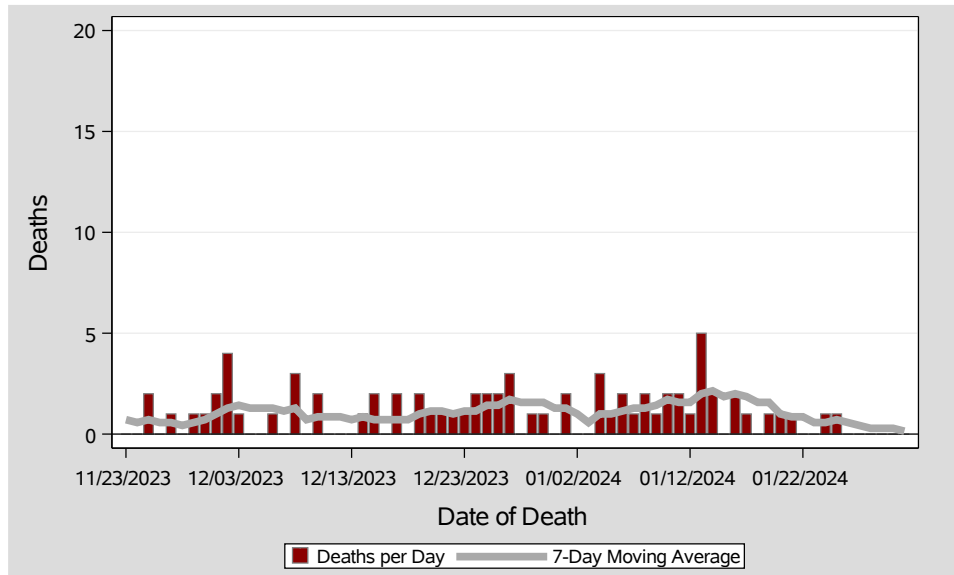


Table 5: COVID-19 Deaths per Day, Clark County, NV

Date	Deaths Per Day	7-Day Moving Average
Jan 15	0	1.9
Jan 16	2	2.0
Jan 17	1	1.9
Jan 18	0	1.6
Jan 19	1	1.6
Jan 20	1	1.0
Jan 21	1	0.9
Jan 22	0	0.9
Jan 23	0	0.6
Jan 24	1	0.6
Jan 25	1	0.7
Jan 26	0	0.6
Jan 27	0	0.4
Jan 28	0	0.3
Jan 29	0	0.3
Jan 30	0	0.3
Jan 31	0	0.1

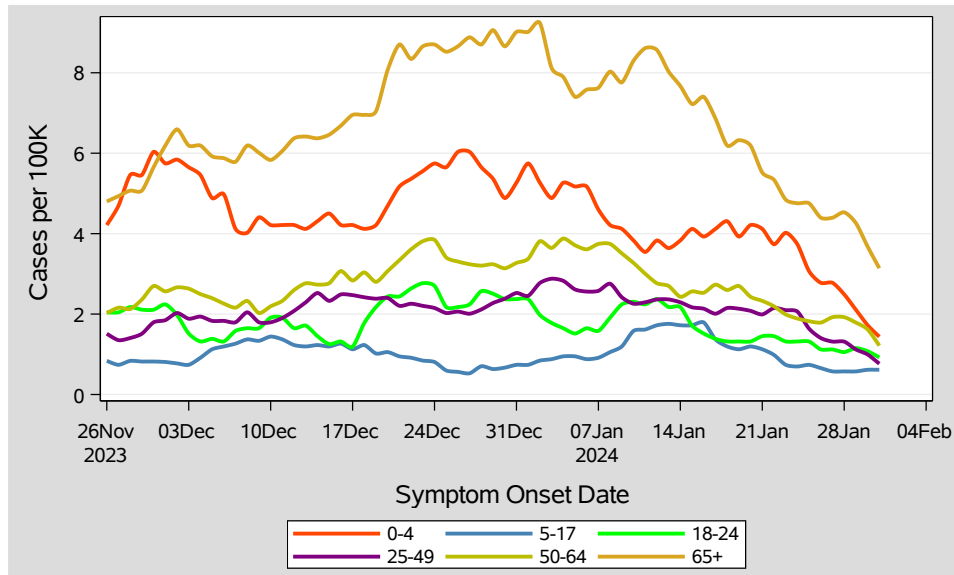


Table 6: 7-Day Average of Daily New Cases per 100K, by Age Group (Years)

Date	0-4	5-17	18-24	25-49	50-64	65+
Jan 15	4.1	1.7	1.7	2.2	2.6	7.2
Jan 16	3.9	1.8	1.5	2.1	2.5	7.4
Jan 17	4.1	1.4	1.4	2.0	2.7	6.9
Jan 18	4.3	1.2	1.3	2.2	2.6	6.2
Jan 19	3.9	1.1	1.3	2.1	2.7	6.3
Jan 20	4.2	1.2	1.3	2.1	2.4	6.2
Jan 21	4.1	1.1	1.4	2.0	2.3	5.5
Jan 22	3.7	1.0	1.4	2.2	2.2	5.3
Jan 23	4.0	0.7	1.3	2.1	2.0	4.8
Jan 24	3.7	0.7	1.3	2.1	1.9	4.8
Jan 25	3.1	0.7	1.3	1.6	1.8	4.8
Jan 26	2.8	0.7	1.1	1.4	1.8	4.4
Jan 27	2.8	0.6	1.1	1.3	1.9	4.4
Jan 28	2.5	0.6	1.1	1.3	1.9	4.5
Jan 29	2.1	0.6	1.2	1.1	1.8	4.3
Jan 30	1.7	0.6	1.1	1.0	1.6	3.7
Jan 31	1.4	0.6	0.9	0.8	1.2	3.1



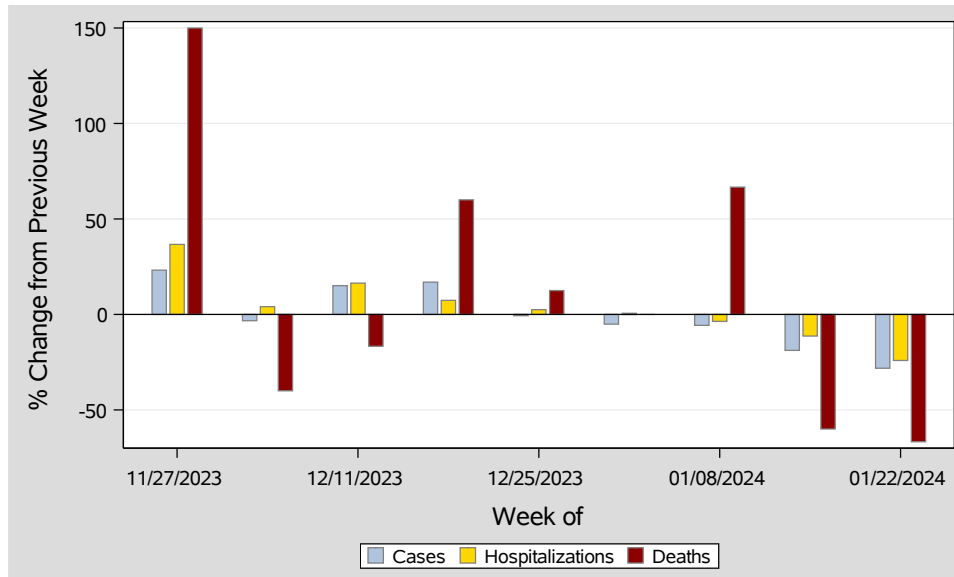


Table 7: Percent Change in Weekly Totals from Previous Week

Week	Case(n)	Cases(%)	Hosp(n)	Hosp(%)	Deaths(n)	Deaths(%)
Nov 27 - Dec 03	425	23.2	123	36.7	10	150.0
Dec 04 - Dec 10	411	-3.3	128	4.1	6	-40.0
Dec 11 - Dec 17	473	15.1	149	16.4	5	-16.7
Dec 18 - Dec 24	553	16.9	160	7.4	8	60.0
Dec 25 - Dec 31	552	-0.2	164	2.5	9	12.5
Jan 01 - Jan 07	524	-5.1	165	0.6	9	0.0
Jan 08 - Jan 14	494	-5.7	159	-3.6	15	66.7
Jan 15 - Jan 21	401	-18.8	141	-11.3	6	-60.0
Jan 22 - Jan 28	288	-28.2	107	-24.1	2	-66.7

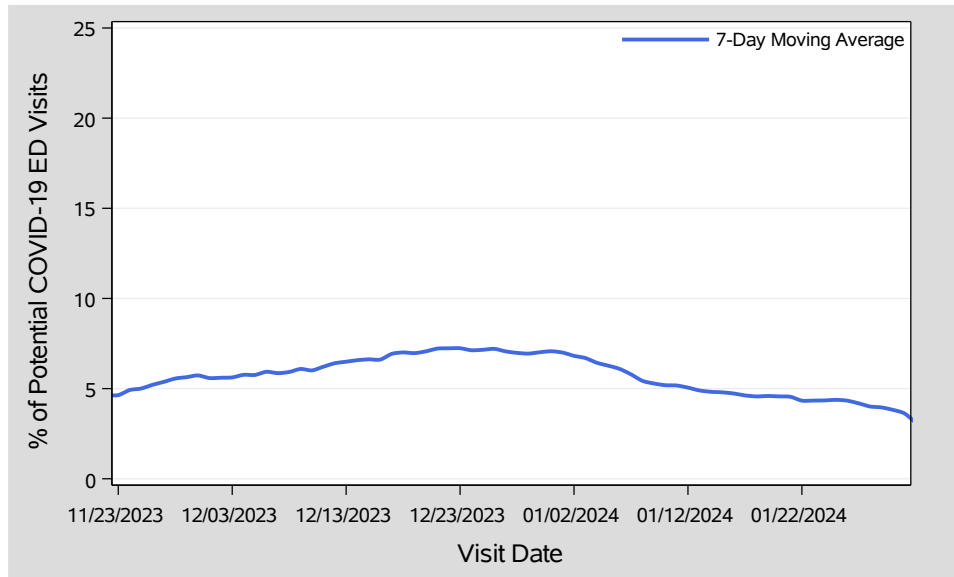


Table 8: Syndromic Surveillance: Percent of ED Visits Potentially Related to COVID-19

Visit Date	Possible COVID Visits	Total ED Visits	(%)	7-Day Average (%)
Jan 15	160	3,145	5.1	4.8
Jan 16	149	3,455	4.3	4.7
Jan 17	136	3,240	4.2	4.6
Jan 18	128	3,149	4.1	4.6
Jan 19	145	3,300	4.4	4.6
Jan 20	141	2,953	4.8	4.6
Jan 21	143	2,860	5.0	4.5
Jan 22	121	3,367	3.6	4.3
Jan 23	148	3,414	4.3	4.3
Jan 24	143	3,356	4.3	4.3
Jan 25	141	3,291	4.3	4.4
Jan 26	129	3,176	4.1	4.3
Jan 27	110	2,950	3.7	4.2
Jan 28	108	2,854	3.8	4.0
Jan 29	110	3,393	3.2	4.0
Jan 30	111	3,281	3.4	3.8
Jan 31	67	2,313	2.9	3.6

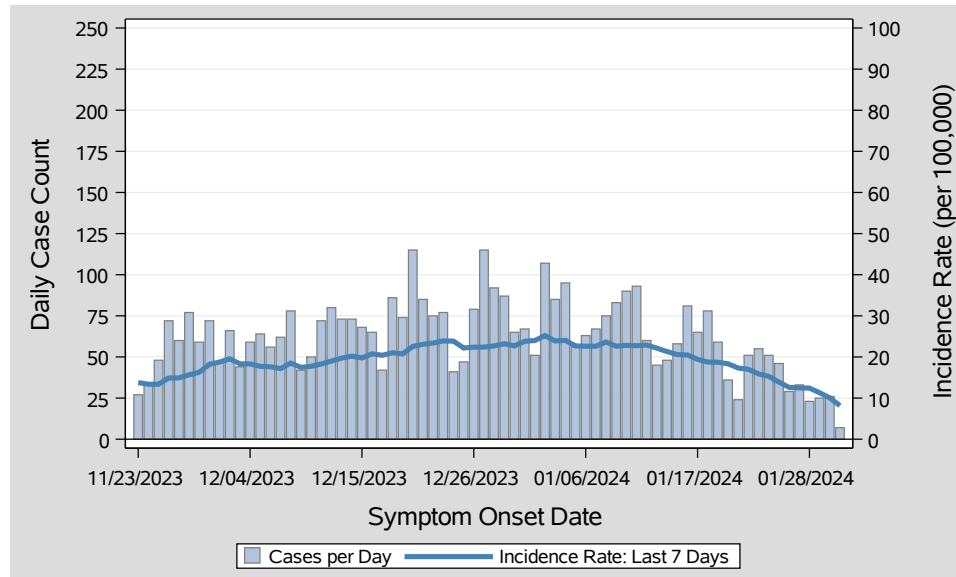


Table 9: COVID-19 Cases per Day and Incidence Rate in the Last 7 Days, Clark County, NV

Onset Date	Cases Per Day	Last 7 Days	
		Total Case Count	Incidence Rate
Jan 15	58	477	20.6
Jan 16	81	475	20.5
Jan 17	65	450	19.4
Jan 18	78	435	18.8
Jan 19	59	434	18.7
Jan 20	36	425	18.3
Jan 21	24	401	17.3
Jan 22	51	394	17.0
Jan 23	55	368	15.9
Jan 24	51	354	15.3
Jan 25	46	322	13.9
Jan 26	29	292	12.6
Jan 27	33	289	12.5
Jan 28	23	288	12.4
Jan 29	25	262	11.3
Jan 30	26	233	10.1
Jan 31	7	189	8.2

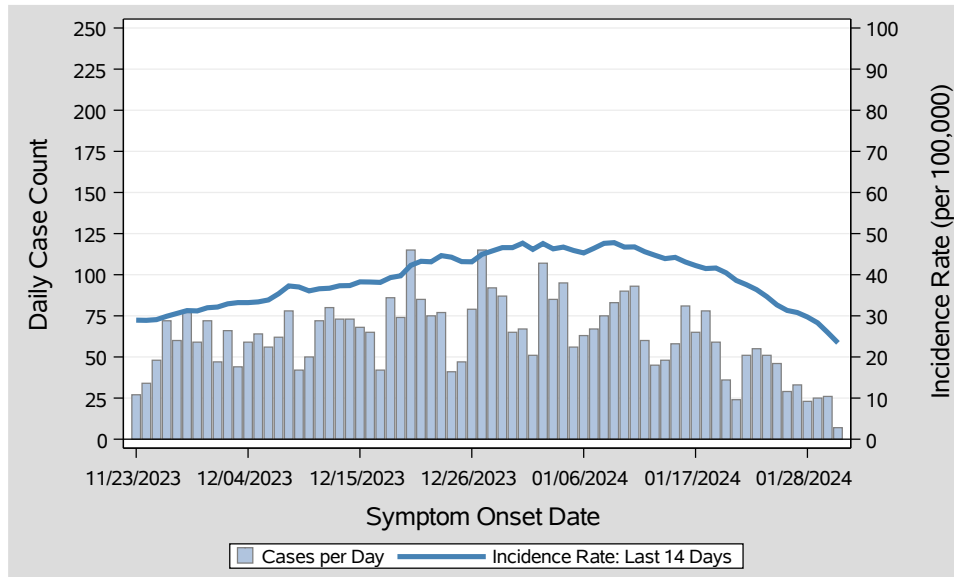


Table 10: COVID-19 Cases per Day and Incidence Rate in the Last 14 Days, Clark County, NV

Onset Date	Cases Per Day	Last 14 Days	
		Total Case Count	Incidence Rate
Jan 15	58	1,025	44.2
Jan 16	81	999	43.1
Jan 17	65	979	42.2
Jan 18	78	962	41.5
Jan 19	59	965	41.6
Jan 20	36	938	40.5
Jan 21	24	895	38.6
Jan 22	51	871	37.6
Jan 23	55	843	36.4
Jan 24	51	804	34.7
Jan 25	46	757	32.7
Jan 26	29	726	31.3
Jan 27	33	714	30.8
Jan 28	23	689	29.7
Jan 29	25	656	28.3
Jan 30	26	601	25.9
Jan 31	7	543	23.4