

# COVID-19 Trends

Clark County, Nevada

Document creation date: September 4, 2023

- General notes: This report uses surveillance data collected by the Southern Nevada Health District. Due to delays related to laboratory processing, reporting, and case investigations, data from the most recent days are less complete than data from older time points. For this reason, as of June 10, 2020 this report will not display data from the previous three days prior to the date that the report was created. As many case investigations are ongoing, all data presented in this report are considered preliminary and subject to change. Data regarding cases, hospitalizations, deaths, and labs were last updated September 4, 2023 at 12:00 AM, and data is reported up through August 31, 2023.
- Cases: Symptom onset date was used for aggregating cases. If symptom onset date was missing, the following dates were substituted in this order: diagnosis date, lab collection date, report date (date case was reported to SNHD), event creation date (date case was entered into EpiTrax, SNHD's surveillance system).
- Hospitalizations: Admission date reported the the Nevada Hospital Association was used for aggregating hospitalizations. One person could have more than one admissions.
- Deaths: Date of death was used for aggregating deaths. If date of death was missing, report date was used.
- For the "7-Day Average of Daily New Cases per 100K, by Age Group (Years)" graph and table, the population data source for calculating rate estimates was from Nevada State Demographer "2019 ASRHO Estimates and Projections Summary 2000 to 2038", 2020 projection, vintage 2019. Rates for individual age categories may be based on small numbers, which may give unstable estimates.
- All graphs in this report show data from approximately 60 days prior to the date of the report.
- All tables show data from the last 14 days before the current date, with the exception of the "Percent Change in Weekly Totals from Previous Week", which displays data from the previous eight completed weeks.
- For the "Percent of People Receiving COVID-19 PCR Tests Who Have Positive Results" graph, one person who has multiple specimens collected in one day is only reported once. If any test of that person is positive, that person counts as a positive result. If all tests of that individual are negative, that person counts as a negative result. Laboratory tests were included if they were a test assessing for the presence of SARS-CoV-2 viral RNA, for example PCR tests. Antibody and antigen tests were excluded.

# COVID-19 Cases

Clark County, NV

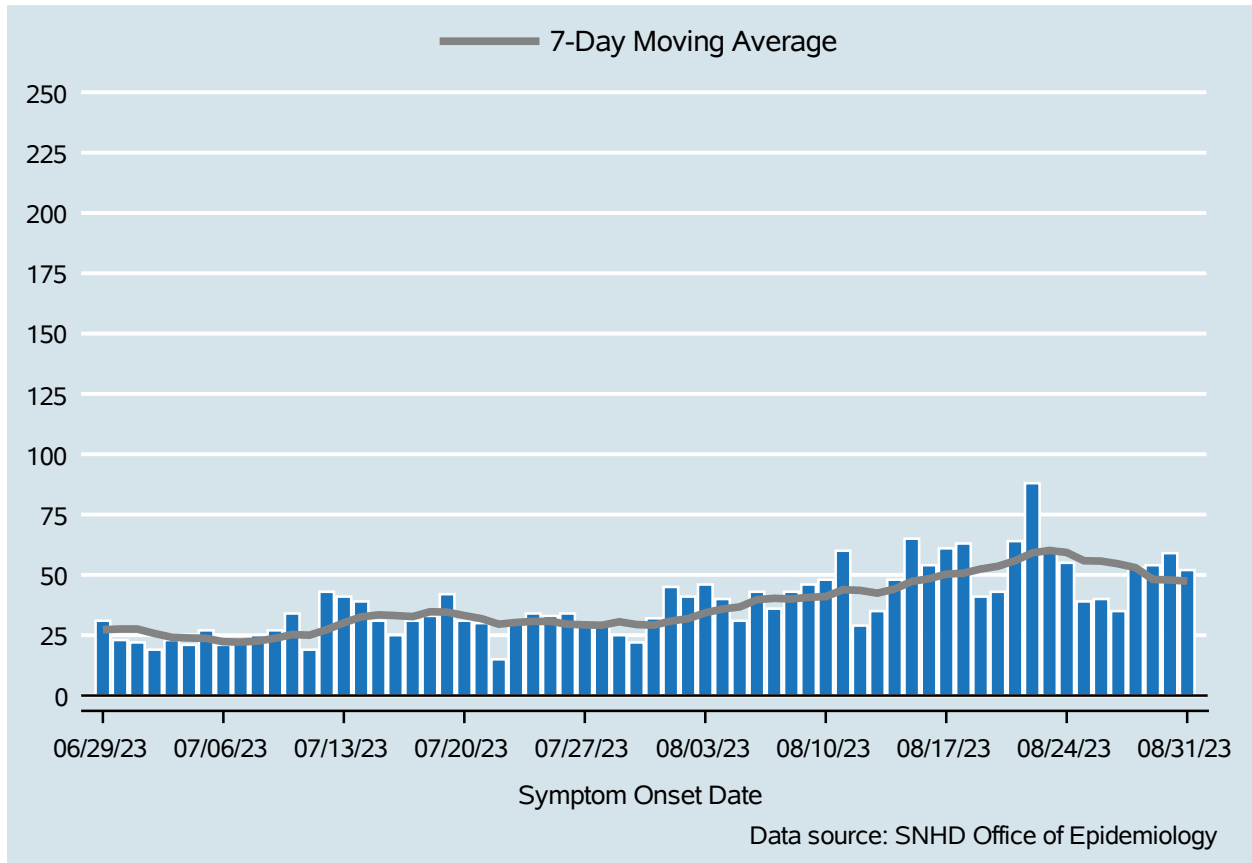


Table 1: COVID-19 Cases per Day, Clark County, NV

Date	Cases Per Day	7-Day Moving Average
Aug 18	63	50.7
Aug 19	41	52.4
Aug 20	43	53.6
Aug 21	64	55.9
Aug 22	88	59.1
Aug 23	61	60.1
Aug 24	55	59.3
Aug 25	39	55.9
Aug 26	40	55.7
Aug 27	35	54.6
Aug 28	53	53.0
Aug 29	54	48.1
Aug 30	59	47.9
Aug 31	52	47.4

## COVID-19 Hospitalizations

Clark County, NV

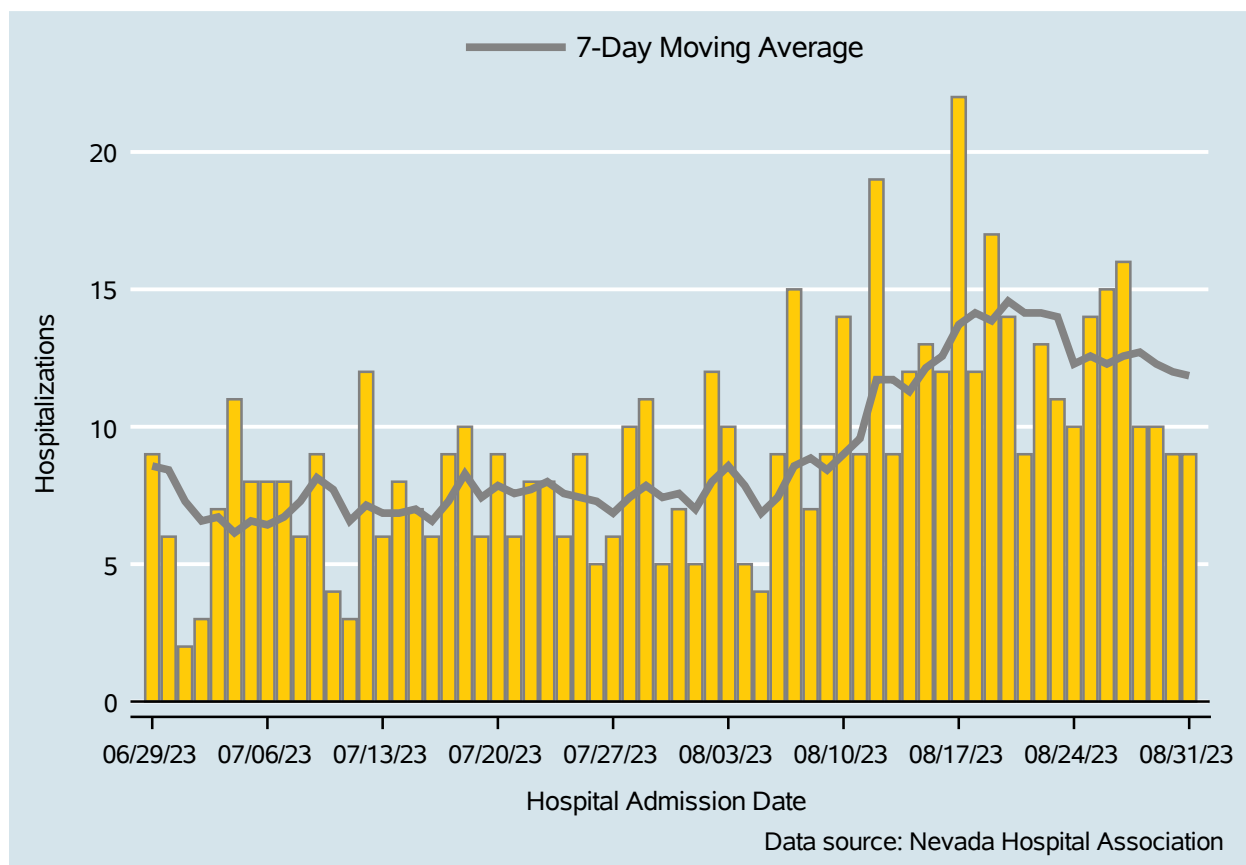


Table 2: COVID-19 Hospitalizations per Day, Clark County, NV

Date	Hospitalizations Per Day	7-Day Moving Average
Aug 18	12	14.1
Aug 19	17	13.9
Aug 20	14	14.6
Aug 21	9	14.1
Aug 22	13	14.1
Aug 23	11	14.0
Aug 24	10	12.3
Aug 25	14	12.6
Aug 26	15	12.3
Aug 27	16	12.6
Aug 28	10	12.7
Aug 29	10	12.3
Aug 30	9	12.0
Aug 31	9	11.9

## Bed Occupancy of COVID-19 Hospitalizations

Clark County, NV

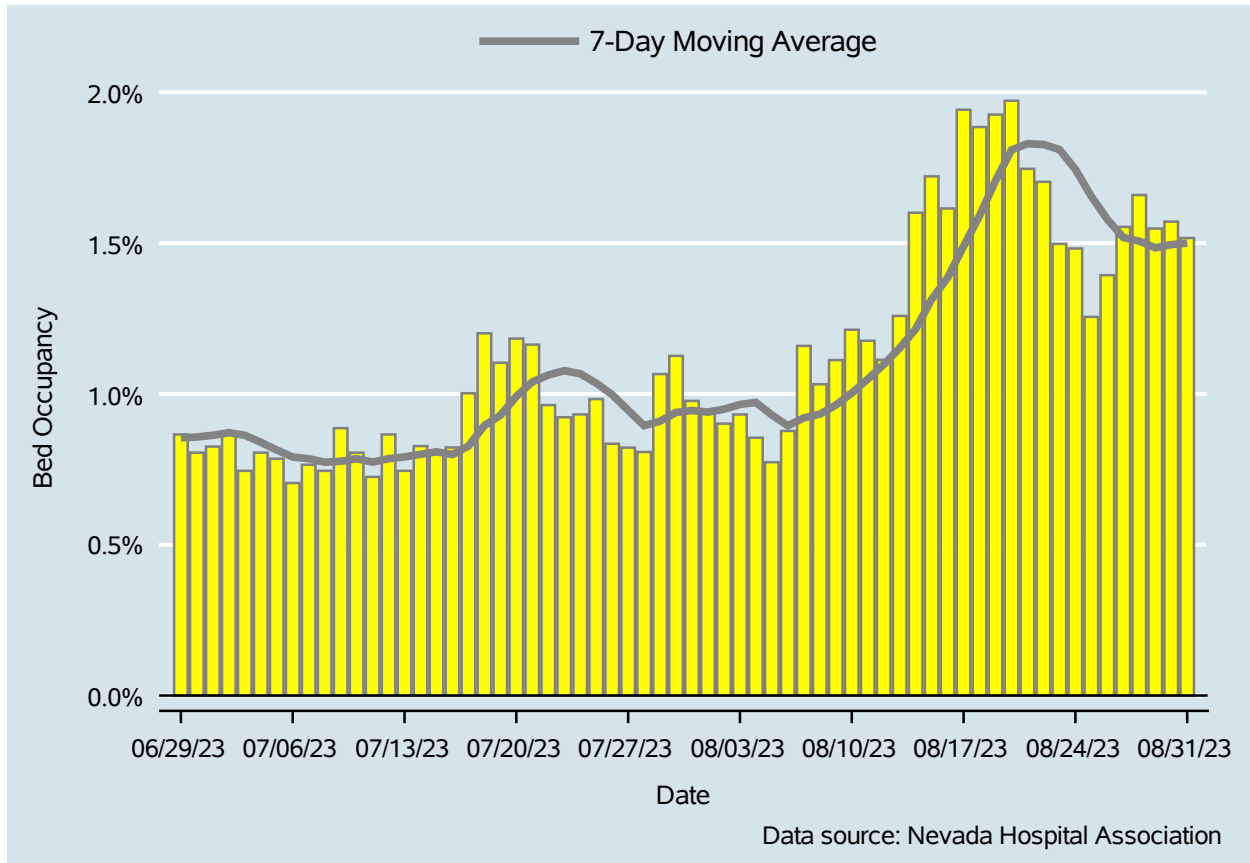


Table 3: Percent of Bed Occupancy per Day, Clark County, NV

Date	Bed Occupancy Per Day	7-Day Moving Average
Aug 18	1.88%	1.59%
Aug 19	1.93%	1.71%
Aug 20	1.97%	1.81%
Aug 21	1.75%	1.83%
Aug 22	1.70%	1.83%
Aug 23	1.50%	1.81%
Aug 24	1.48%	1.74%
Aug 25	1.26%	1.65%
Aug 26	1.39%	1.58%
Aug 27	1.55%	1.52%
Aug 28	1.66%	1.51%
Aug 29	1.55%	1.48%
Aug 30	1.57%	1.49%
Aug 31	1.52%	1.50%

# COVID-19 Deaths

Clark County, NV

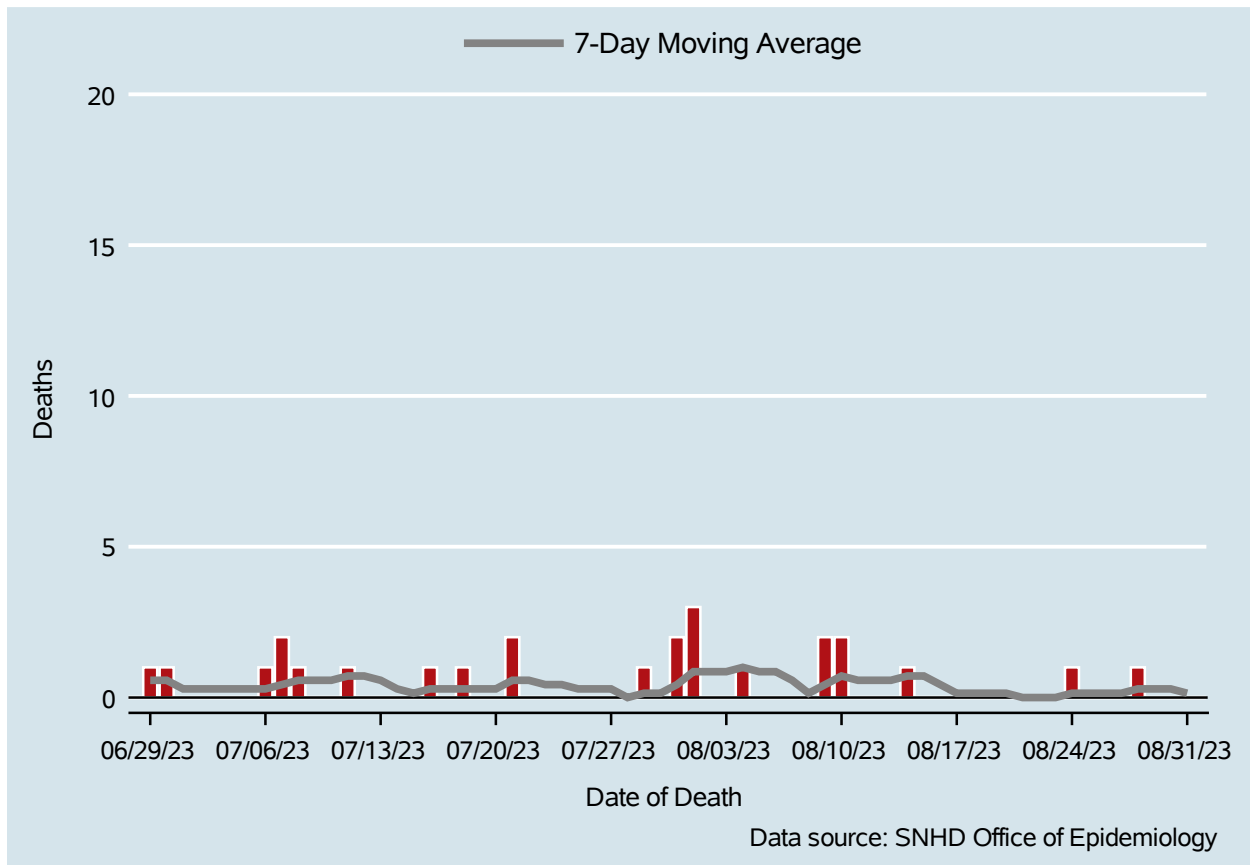


Table 4: COVID-19 Deaths per Day, Clark County, NV

Date	Deaths Per Day	7-Day Moving Average
Aug 18	0	0.1
Aug 19	0	0.1
Aug 20	0	0.1
Aug 21	0	0.0
Aug 22	0	0.0
Aug 23	0	0.0
Aug 24	1	0.1
Aug 25	0	0.1
Aug 26	0	0.1
Aug 27	0	0.1
Aug 28	1	0.3
Aug 29	0	0.3
Aug 30	0	0.3
Aug 31	0	0.1

## 7-Day Average of Daily New Cases per 100K, by Age Group (Years)

Clark County, NV

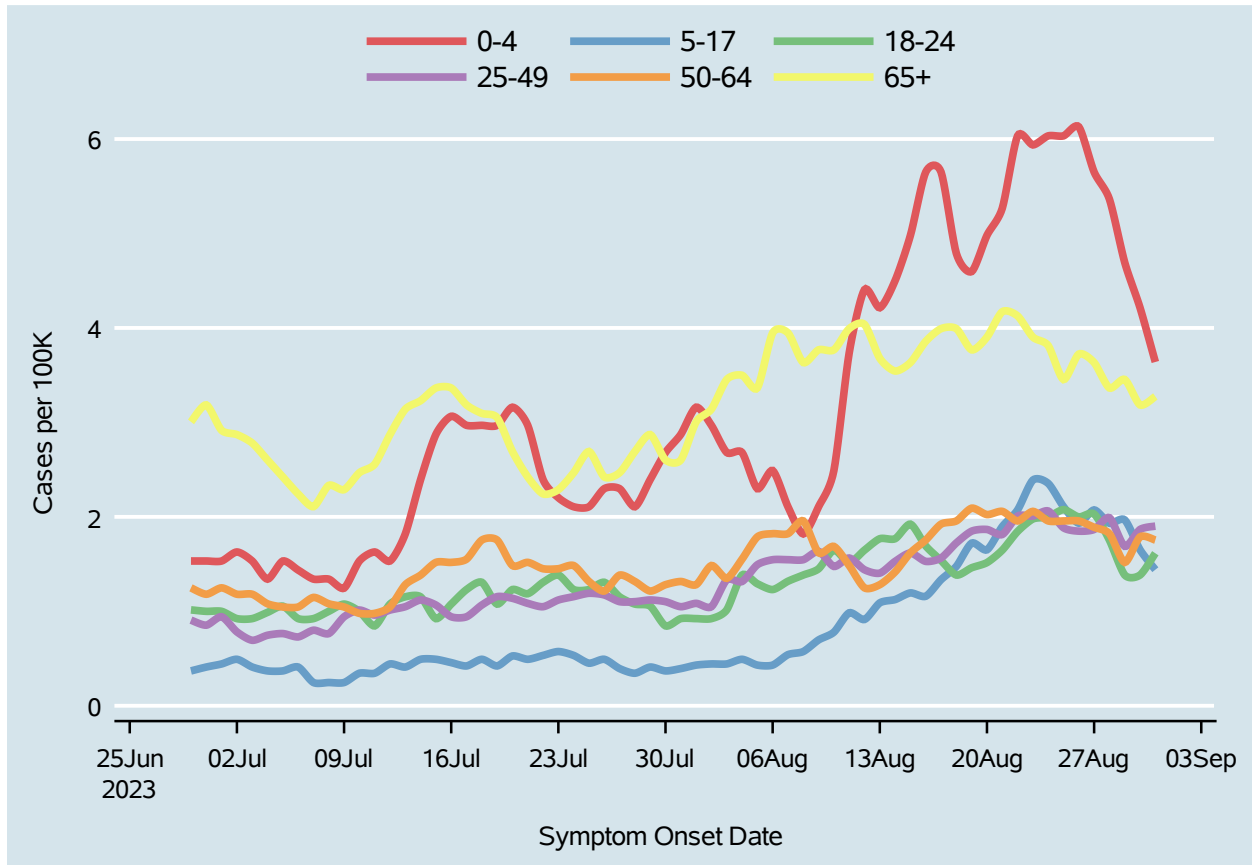


Table 5: 7-Day Average of Daily New Cases per 100K, by Age Group (Years)

Date	0-4	5-17	18-24	25-49	50-64	65+
Aug 18	4.8	1.5	1.4	1.7	2.0	4.0
Aug 19	4.6	1.7	1.5	1.8	2.1	3.8
Aug 20	5.0	1.7	1.5	1.9	2.0	3.9
Aug 21	5.3	1.9	1.6	1.8	2.1	4.2
Aug 22	6.0	2.1	1.8	2.0	2.0	4.1
Aug 23	5.9	2.4	2.0	2.0	2.1	3.9
Aug 24	6.0	2.4	2.0	2.1	2.0	3.8
Aug 25	6.0	2.1	2.1	1.9	2.0	3.5
Aug 26	6.1	1.9	2.0	1.8	2.0	3.7
Aug 27	5.7	2.1	2.0	1.9	1.9	3.6
Aug 28	5.4	1.9	1.8	2.0	1.8	3.4
Aug 29	4.7	2.0	1.4	1.7	1.5	3.5
Aug 30	4.2	1.7	1.4	1.9	1.8	3.2
Aug 31	3.6	1.4	1.6	1.9	1.8	3.3

*Report prepared by: Ying Zhang, PhD, MPH (Office of Epidemiology) and Lei Zhang, MS (Office of Informatics)*