

# COVID-19 Trends

Clark County, Nevada

Document creation date: November 8, 2023

- **General notes:** This report uses surveillance data collected by the Southern Nevada Health District. Due to delays related to laboratory processing, reporting, and case investigations, data from the most recent days are less complete than data from older time points. For this reason, as of June 10, 2020 this report will not display data from the previous three days prior to the date that the report was created. As many case investigations are ongoing, all data presented in this report are considered preliminary and subject to change. Data regarding cases, hospitalizations, deaths, and labs were last updated November 8, 2023 at 12:00 AM, and data is reported up through November 4, 2023.
- **Cases:** Symptom onset date was used for aggregating cases. If symptom onset date was missing, the following dates were substituted in this order: diagnosis date, lab collection date, report date (date case was reported to SNHD), event creation date (date case was entered into EpiTrax, SNHD's surveillance system).
- **Hospitalizations:** Admission date reported the the Nevada Hospital Association was used for aggregating hospitalizations. One person could have more than one admissions.
- **Deaths:** Date of death was used for aggregating deaths. If date of death was missing, report date was used.
- For the "7-Day Average of Daily New Cases per 100K, by Age Group (Years)" graph and table, the population data source for calculating rate estimates was from Nevada State Demographer "2019 ASRHO Estimates and Projections Summary 2000 to 2038", 2020 projection, vintage 2019. Rates for individual age categories may be based on small numbers, which may give unstable estimates.
- All graphs in this report show data from approximately 60 days prior to the date of the report.
- All tables show data from the last 14 days before the current date, with the exception of the "Percent Change in Weekly Totals from Previous Week", which displays data from the previous eight completed weeks.
- For the "Percent of People Receiving COVID-19 PCR Tests Who Have Positive Results" graph, one person who has multiple specimens collected in one day is only reported once. If any test of that person is positive, that person counts as a positive result. If all tests of that individual are negative, that person counts as a negative result. Laboratory tests were included if they were a test assessing for the presence of SARS-CoV-2 viral RNA, for example PCR tests. Antibody and antigen tests were excluded.

# COVID-19 Cases

Clark County, NV

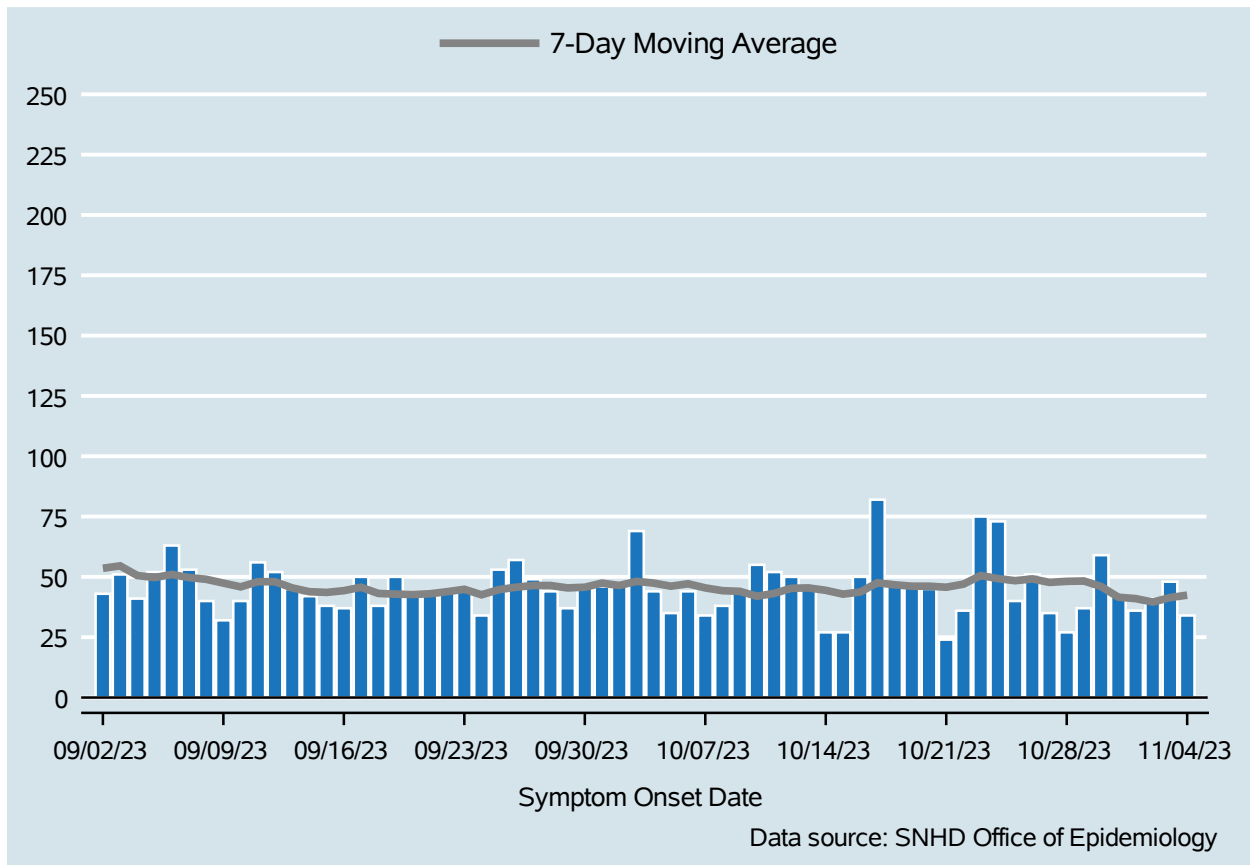


Table 1: COVID-19 Cases per Day, Clark County, NV

Date	Cases Per Day	7-Day Moving Average
Oct 22	36	47.0
Oct 23	75	50.6
Oct 24	73	49.3
Oct 25	40	48.4
Oct 26	51	49.1
Oct 27	35	47.7
Oct 28	27	48.1
Oct 29	37	48.3
Oct 30	59	46.0
Oct 31	42	41.6
Nov 01	36	41.0
Nov 02	41	39.6
Nov 03	48	41.4
Nov 04	34	42.4

# COVID-19 Hospitalizations

Clark County, NV

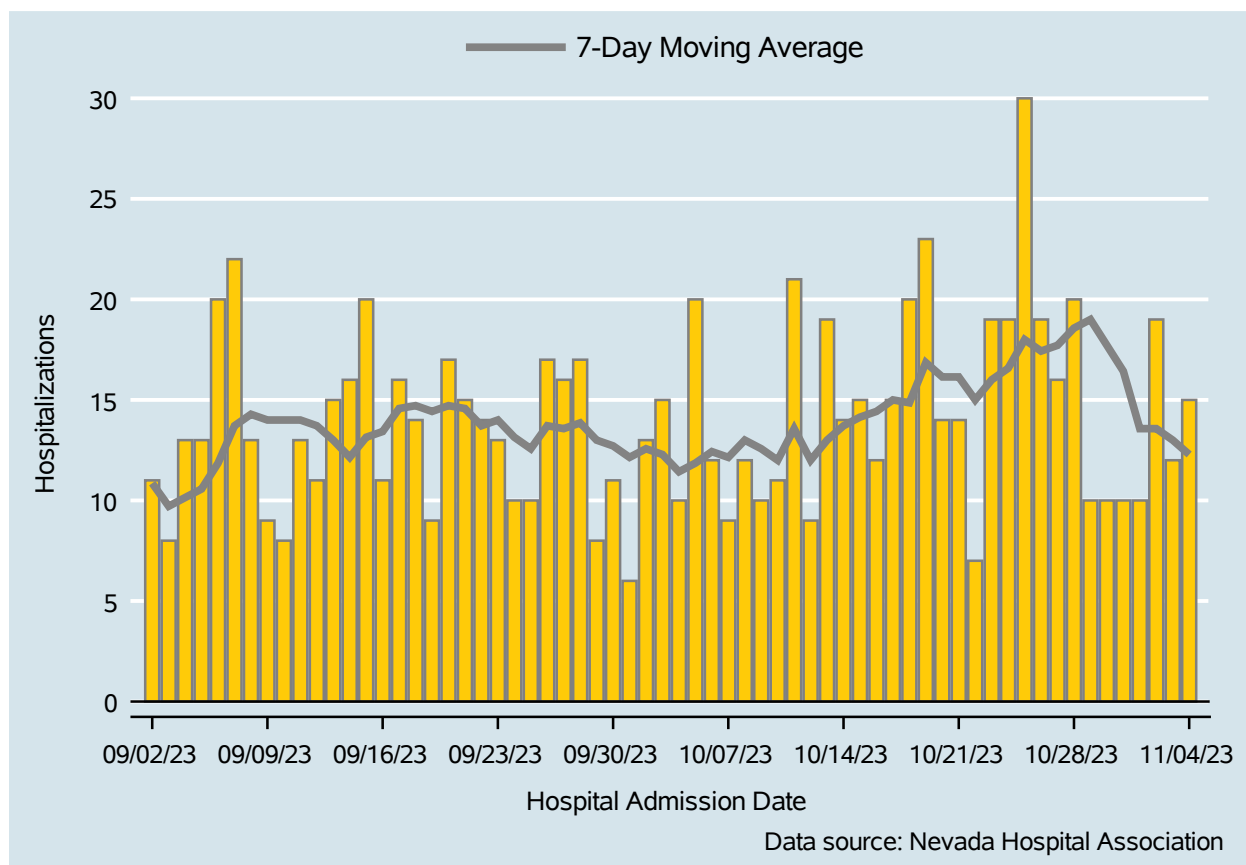


Table 2: COVID-19 Hospitalizations per Day, Clark County, NV

Date	Hospitalizations Per Day	7-Day Moving Average
Oct 22	7	15.0
Oct 23	19	16.0
Oct 24	19	16.6
Oct 25	30	18.0
Oct 26	19	17.4
Oct 27	16	17.7
Oct 28	20	18.6
Oct 29	10	19.0
Oct 30	10	17.7
Oct 31	10	16.4
Nov 01	10	13.6
Nov 02	19	13.6
Nov 03	12	13.0
Nov 04	15	12.3

# Bed Occupancy of COVID-19 Hospitalizations

Clark County, NV

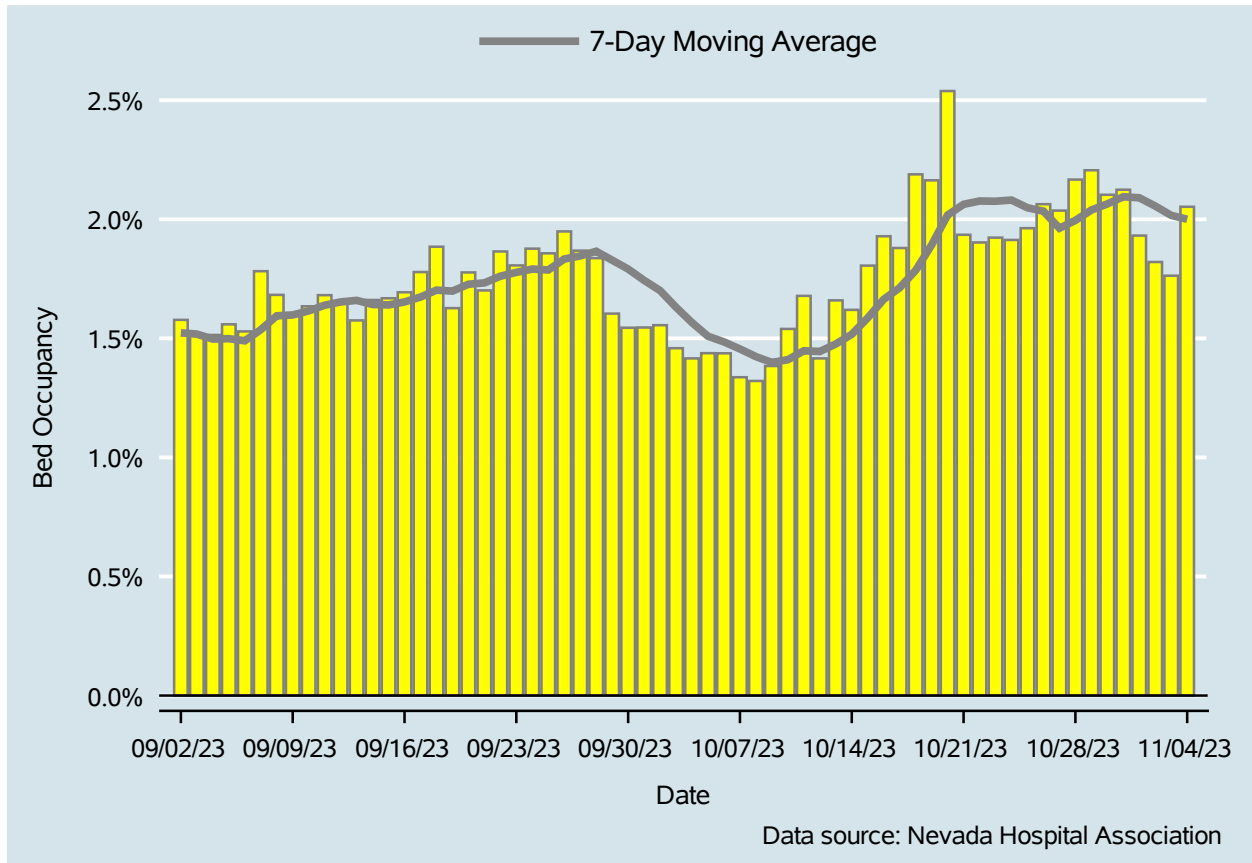


Table 3: Percent of Bed Occupancy per Day, Clark County, NV

Date	Bed Occupancy Per Day	7-Day Moving Average
Oct 22	1.90%	2.08%
Oct 23	1.92%	2.08%
Oct 24	1.91%	2.08%
Oct 25	1.96%	2.05%
Oct 26	2.06%	2.03%
Oct 27	2.04%	1.96%
Oct 28	2.17%	2.00%
Oct 29	2.21%	2.04%
Oct 30	2.10%	2.06%
Oct 31	2.12%	2.09%
Nov 01	1.93%	2.09%
Nov 02	1.82%	2.06%
Nov 03	1.76%	2.02%
Nov 04	2.05%	2.00%

# COVID-19 Deaths

Clark County, NV

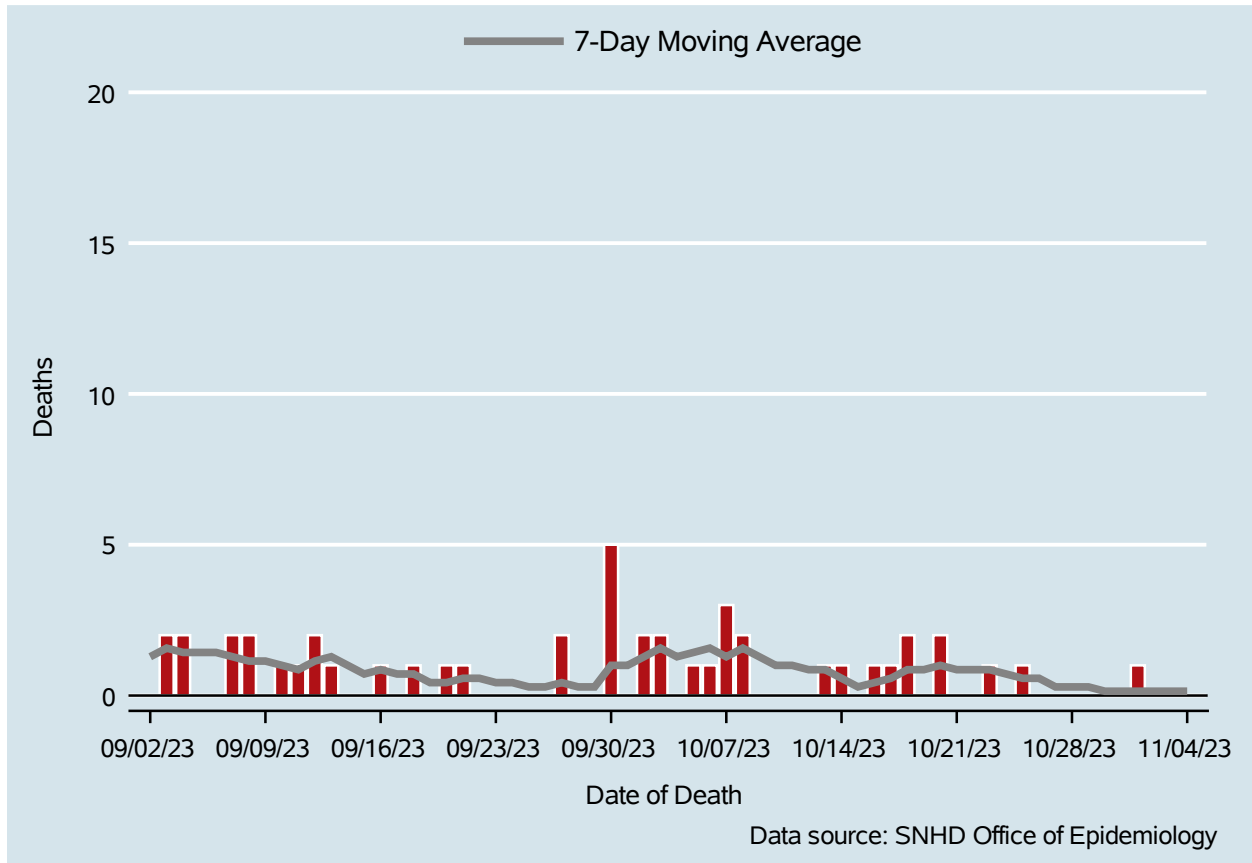


Table 4: COVID-19 Deaths per Day, Clark County, NV

Date	Deaths Per Day	7-Day Moving Average
Oct 22	0	0.9
Oct 23	1	0.9
Oct 24	0	0.7
Oct 25	1	0.6
Oct 26	0	0.6
Oct 27	0	0.3
Oct 28	0	0.3
Oct 29	0	0.3
Oct 30	0	0.1
Oct 31	0	0.1
Nov 01	1	0.1
Nov 02	0	0.1
Nov 03	0	0.1
Nov 04	0	0.1

## 7-Day Average of Daily New Cases per 100K, by Age Group (Years)

Clark County, NV

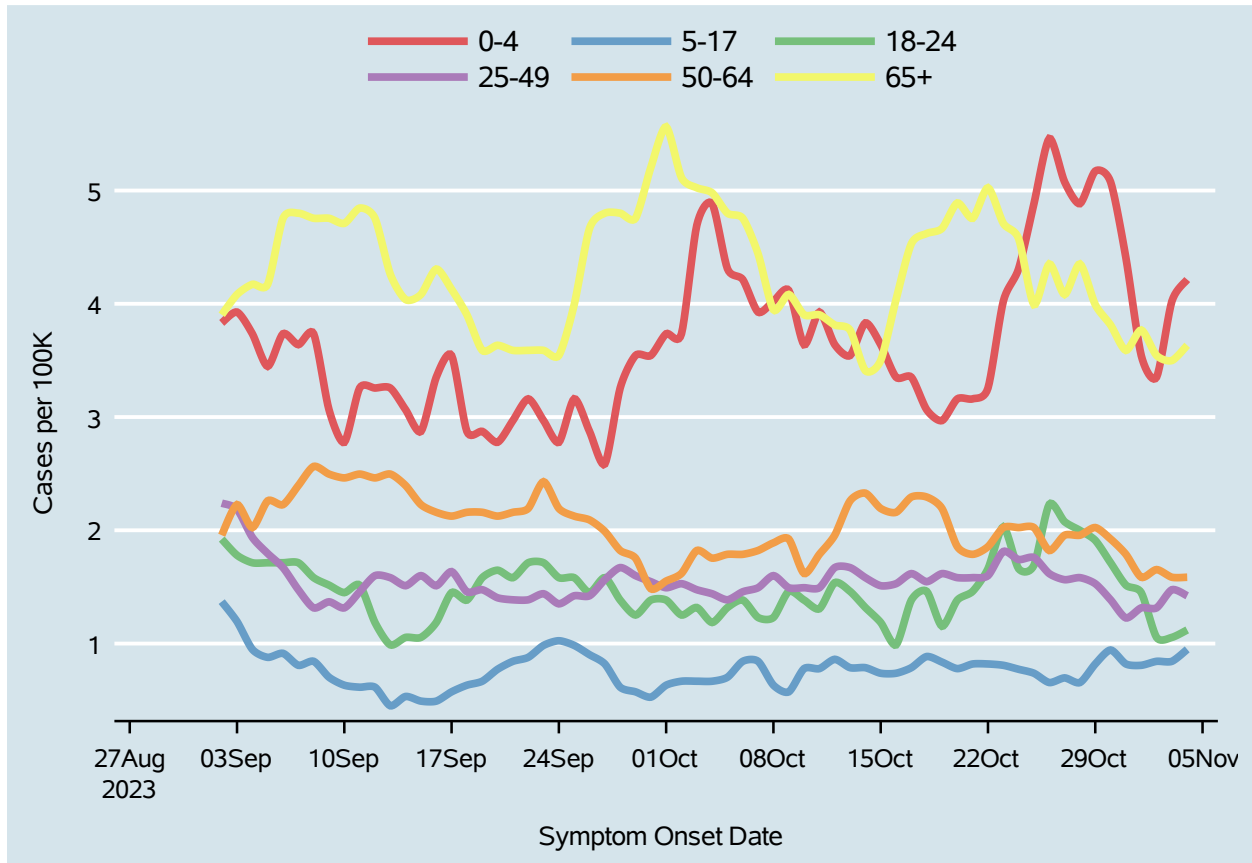


Table 5: 7-Day Average of Daily New Cases per 100K, by Age Group (Years)

Date	0-4	5-17	18-24	25-49	50-64	65+
Oct 22	3.3	0.8	1.7	1.6	1.9	5.0
Oct 23	4.0	0.8	2.0	1.8	2.0	4.7
Oct 24	4.3	0.8	1.7	1.7	2.0	4.6
Oct 25	4.9	0.7	1.7	1.8	2.0	4.0
Oct 26	5.5	0.7	2.2	1.6	1.8	4.4
Oct 27	5.1	0.7	2.1	1.6	2.0	4.1
Oct 28	4.9	0.7	2.0	1.6	2.0	4.4
Oct 29	5.2	0.8	1.9	1.5	2.0	4.0
Oct 30	5.1	0.9	1.7	1.4	1.9	3.8
Oct 31	4.4	0.8	1.5	1.2	1.8	3.6
Nov 01	3.5	0.8	1.4	1.3	1.6	3.8
Nov 02	3.4	0.8	1.1	1.3	1.7	3.5
Nov 03	4.0	0.8	1.1	1.5	1.6	3.5
Nov 04	4.2	0.9	1.1	1.4	1.6	3.6

*Report prepared by Office of Epidemiology*