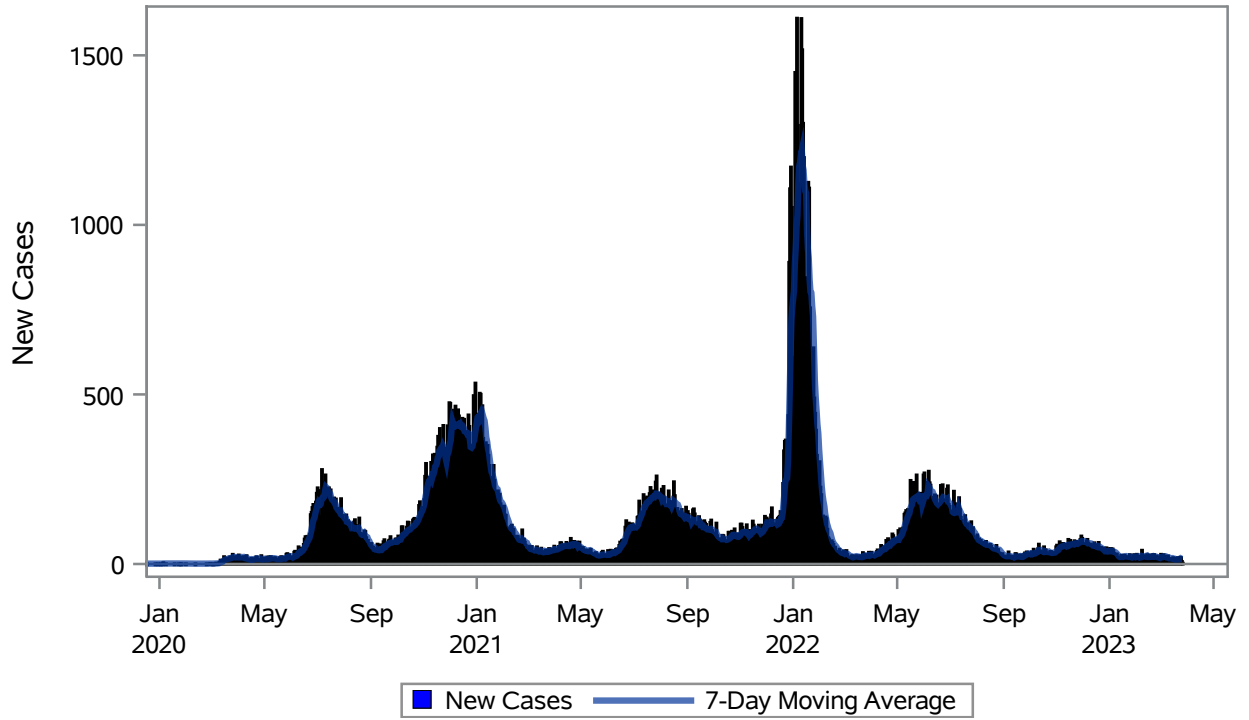


COVID19 Cases for Henderson, 7-Day Moving Average



Investigations are ongoing; data are subject to change.

Reporting through 27MAR2023

Henderson zip codes include 89002, 89011, 89012, 89014, 89015, 89044, 89052, 89074, 89119, 89120, 89122, 89123, 89124, 89183.

Table 1: New COVID19 Cases and 7-Day Moving Average in Henderson, Previous Two Weeks

Date (Daily)	New Cases	7-Day Moving Average
14MAR2023	15	15.86
15MAR2023	19	16.86
16MAR2023	16	15.71
17MAR2023	4	14.00
18MAR2023	17	14.57
19MAR2023	8	13.43
20MAR2023	19	14.00
21MAR2023	15	14.00
22MAR2023	18	13.86
23MAR2023	20	14.43
24MAR2023	19	16.57
25MAR2023	8	15.29

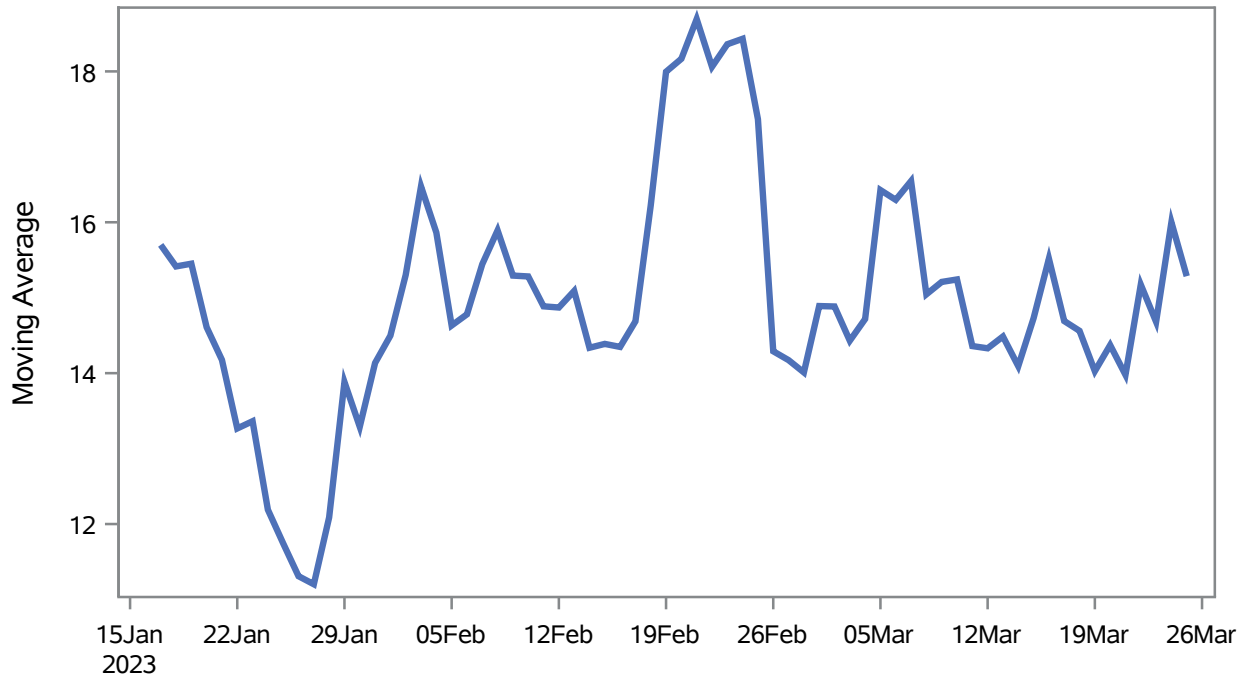
Note1: Event Date is calculated as follows based on completed information:
1) Disease onset date 2) Disease diagnosis date 3) Lab result collection date 4) Report date to SNHD.

Investigations are ongoing; data are subject to change.

Reporting through 27MAR2023

Henderson zip codes include 89002, 89011, 89012, 89014, 89015, 89044, 89052, 89074, 89119, 89120, 89122, 89123, 89124, 89183.

Percent of People Receiving COVID-19 Viral Tests Who Have Positive Results in Henderson



Investigations are ongoing; data are subject to change.

Reporting through 27MAR2023

Henderson zip codes include 89002, 89011, 89012, 89014, 89015, 89044, 89052, 89074, 89119, 89120, 89122, 89123, 89124, 89183.

Table 2: Percent of People Receiving COVID-19 Viral Tests Who Have Positive Results in Henderson

Collection Date	Positive	Negative	Equivocal	Total	% Positivity	7-Day Moving Average
11MAR2023	11	91		102	10.78	14.4
12MAR2023	20	89		109	18.35	14.3
13MAR2023	22	130		152	14.47	14.5
14MAR2023	21	109		130	16.15	14.1
15MAR2023	16	111		127	12.60	14.7
16MAR2023	23	92		115	20.00	15.5
17MAR2023	11	94		105	10.48	14.7
18MAR2023	8	72	1	81	9.88	14.6
19MAR2023	13	76		89	14.61	14.0
20MAR2023	25	123		148	16.89	14.4
21MAR2023	15	97		112	13.39	14.0
22MAR2023	26	98		124	20.97	15.2
23MAR2023	24	121		145	16.55	14.7
24MAR2023	27	110		137	19.71	16.0
25MAR2023	4	78		82	4.88	15.3

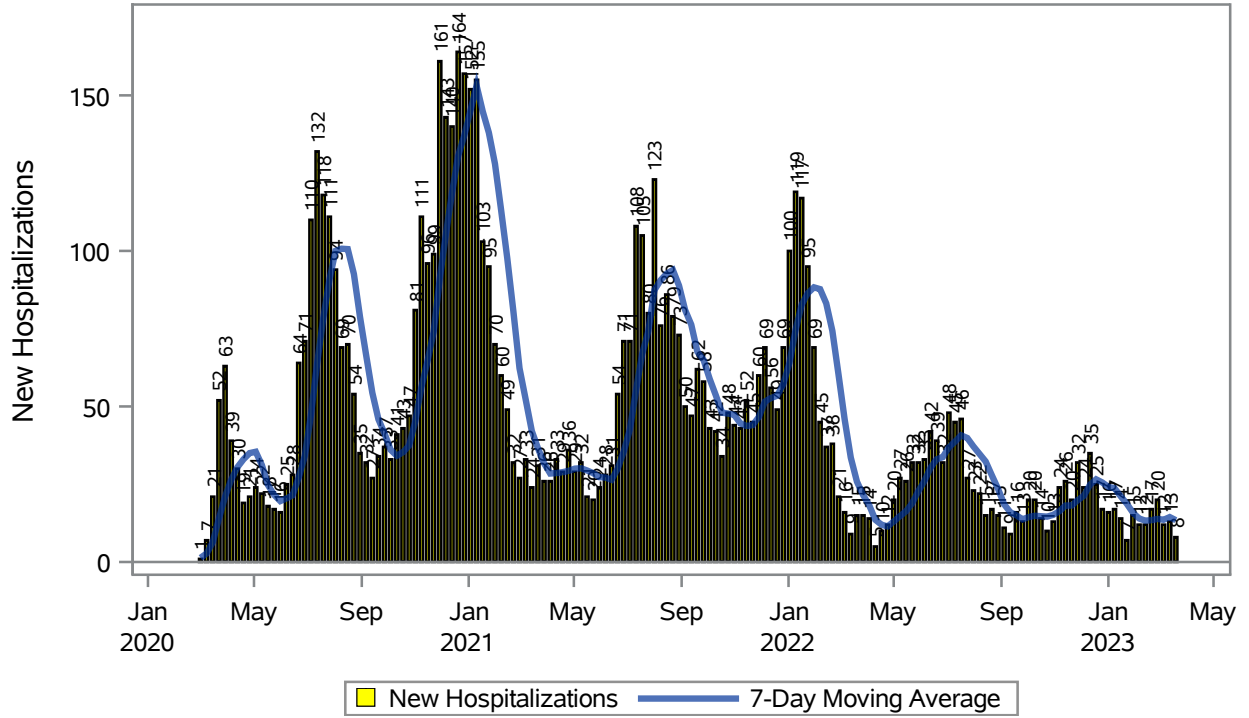
Note: Testing Data includes a 3 day delay

Investigations are ongoing; data are subject to change.

Reporting through 27MAR2023

Henderson zip codes include 89002, 89011, 89012, 89014, 89015, 89044, 89052, 89074, 89119, 89120, 89122, 89123, 89124, 89183.

COVID19 Hospitalizations for Henderson, 7-Day Moving Average



Investigations are ongoing; data are subject to change.

Reporting through 27MAR2023

Henderson zip codes include 89002, 89011, 89012, 89014, 89015, 89044, 89052, 89074, 89119, 89120, 89122, 89123, 89124, 89183.

Table 3: New COVID19-Related Hospitalizations and 7-Day Moving Average in Henderson, previous month

Week	Hospitalizations	7-Day Moving Average
26FEB2023	20	13.9
05MAR2023	12	13.6
12MAR2023	13	14.4
19MAR2023	8	13.4

Note1: Admission Date is calculated as follows based on completed information:
A) COVID19 Case is hospitalized B) COVID19 Case has a hospital admission date.

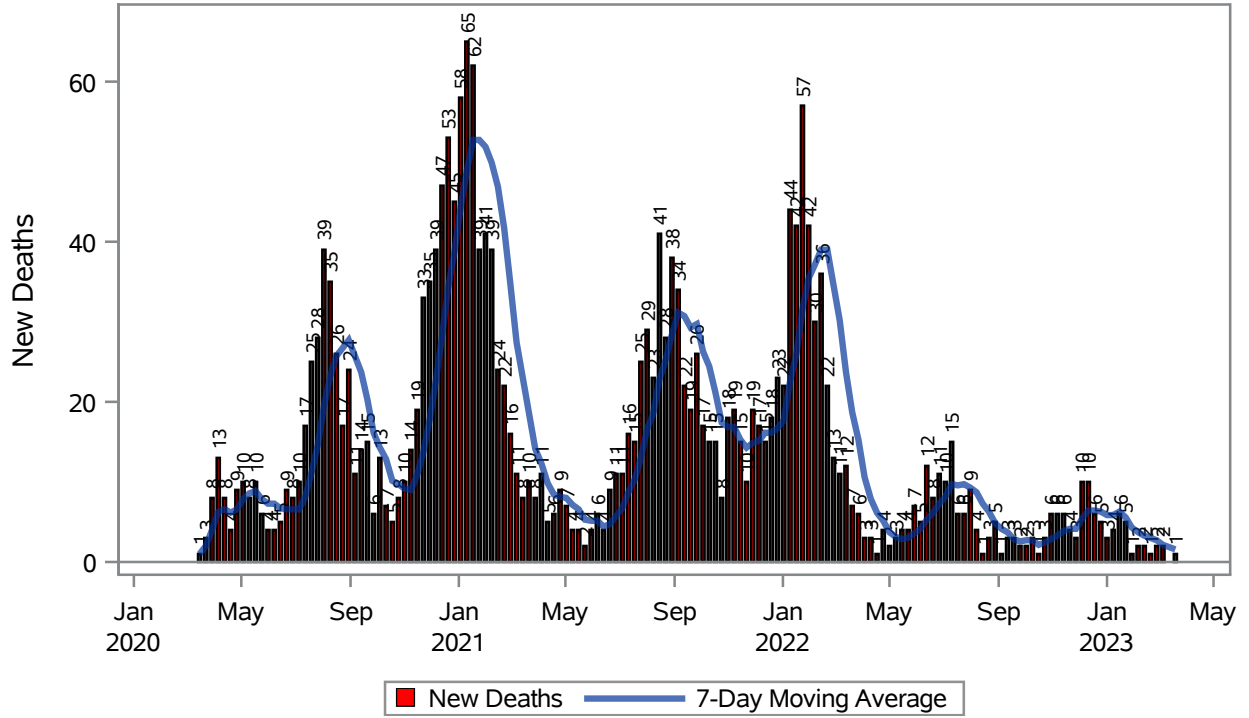
If admission date is missing, then the following is substituted temporarily, in order:
1) Disease onset date 2) Disease diagnosis date 3) Lab result collection date 4) Report date to SNHD.

Investigations are ongoing; data are subject to change.

Reporting through 27MAR2023

Henderson zip codes include 89002, 89011, 89012, 89014, 89015, 89044, 89052, 89074, 89119, 89120, 89122, 89123, 89124, 89183.

COVID19 Deaths for Henderson, 7-Day Moving Average



Investigations are ongoing; data are subject to change.
Reporting through 27MAR2023

Henderson zip codes include 89002, 89011, 89012, 89014, 89015, 89044, 89052, 89074, 89119, 89120, 89122, 89123, 89124, 89183.

Table 4: New COVID19-Related Deaths and 7-Day Moving Average in Henderson, Previous Month

Week	Deaths	7-Day Moving Average
26FEB2023	2	2.71
05MAR2023	2	2.14
19MAR2023	1	1.57

Note1: Date of Death is calculated as follows based on completed information:
A) COVID19 Case is reported as deceased B) COVID19 Case has a reported date of death.

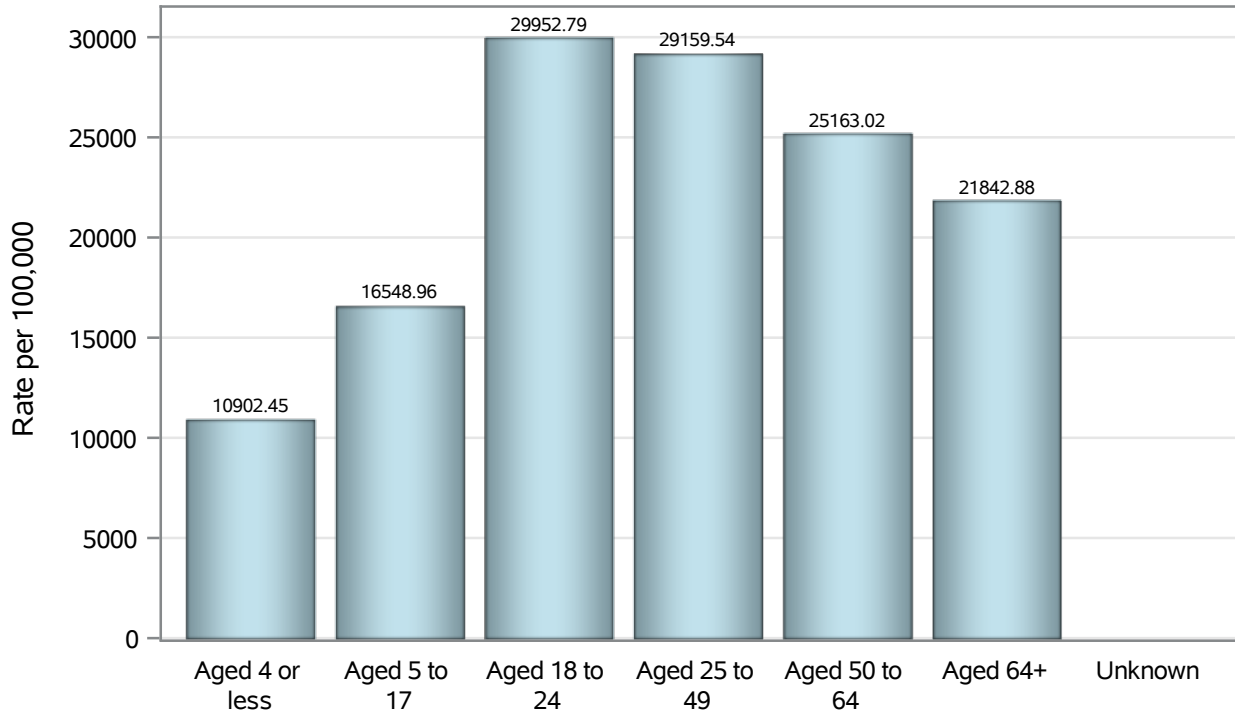
If date of death is missing, then the following is substituted temporarily, in order:
1) Disease onset date 2) Disease diagnosis date
3) Lab result collection date 4) Report date to SNHD.

Investigations are ongoing; data are subject to change.

Reporting through 27MAR2023

Henderson zip codes include 89002, 89011, 89012, 89014, 89015, 89044, 89052, 89074, 89119, 89120, 89122, 89123, 89124, 89183.

Case Age Rates in Henderson

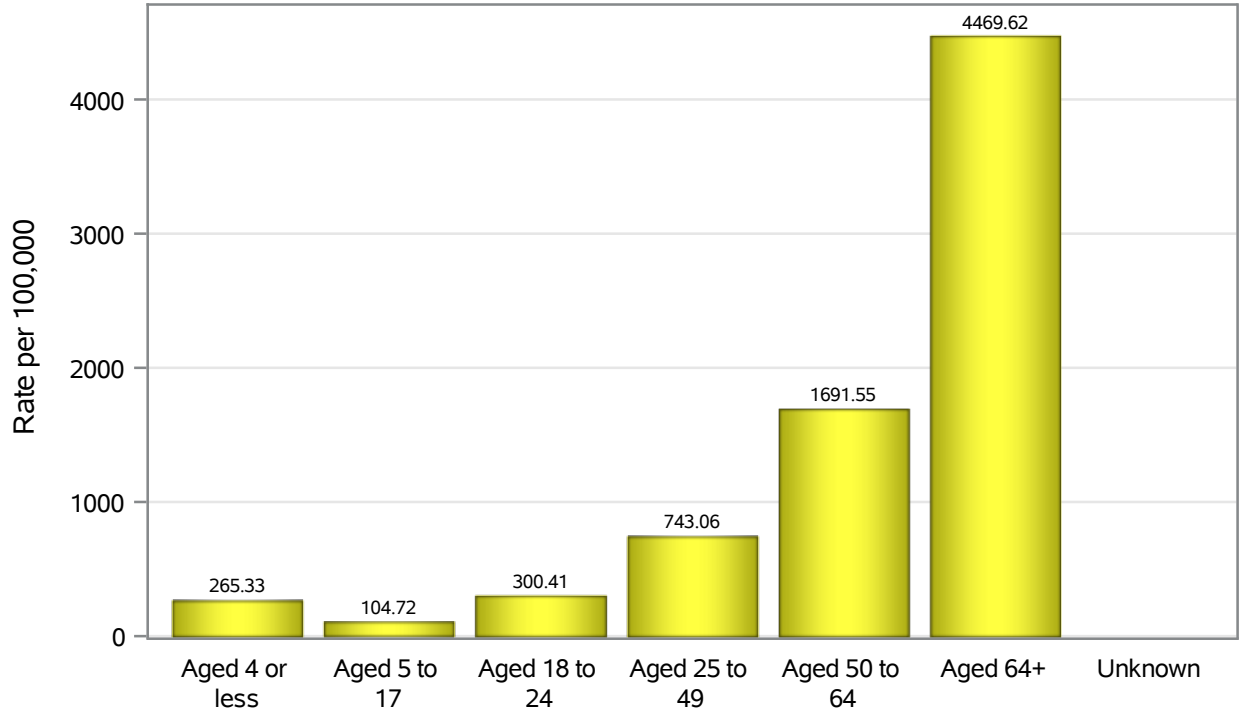


Investigations are ongoing; data are subject to change.

Reporting through 27MAR2023

Henderson zip codes include 89002, 89011, 89012, 89014, 89015, 89044, 89052, 89074, 89119, 89120, 89122, 89123, 89124, 89183.

Hospitalization Age Rates in Henderson

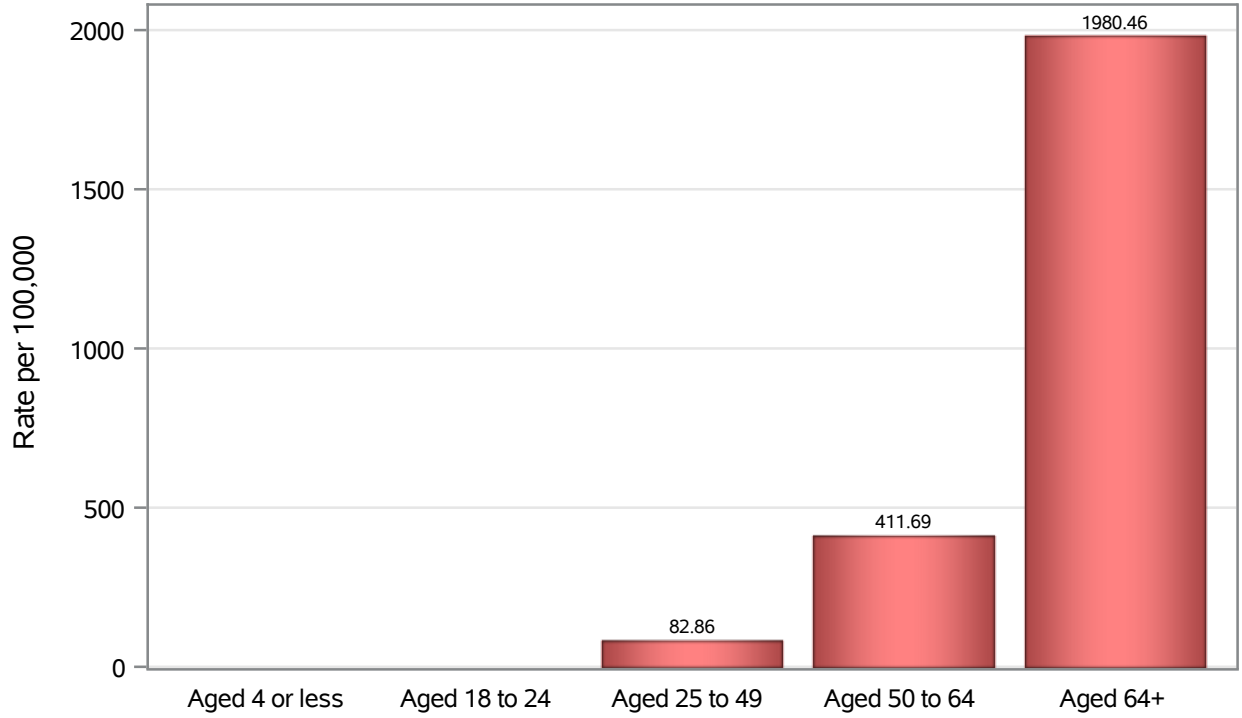


Investigations are ongoing; data are subject to change.

Reporting through 27MAR2023

Henderson zip codes include 89002, 89011, 89012, 89014, 89015, 89044, 89052, 89074, 89119, 89120, 89122, 89123, 89124, 89183.

Death Age Rates in Henderson



Investigations are ongoing; data are subject to change.

Reporting through 27MAR2023

Henderson zip codes include 89002, 89011, 89012, 89014, 89015, 89044, 89052, 89074, 89119, 89120, 89122, 89123, 89124, 89183.

Table 5: Age and COVID19 in Henderson

Case Status	Age Categories	N	%	Population	Rate per 100,000
Cases	Aged 4 or less	3164	2.4	29,021	10902
	Aged 5 to 17	13591	10.5	82,126	16549
	Aged 18 to 24	13261	10.3	44,273	29953
	Aged 25 to 49	54547	42.2	187064	29160
	Aged 50 to 64	25854	20.0	102746	25163
	Aged 64+	18893	14.6	86,495	21843
	Unknown	28	0.0	.	.
Hospitalizations	Aged 4 or less	77	1.1	29,021	265.33
	Aged 5 to 17	86	1.2	82,126	104.72
	Aged 18 to 24	133	1.8	44,273	300.41
	Aged 25 to 49	1390	19.1	187064	743.06
	Aged 50 to 64	1738	23.8	102746	1691.6
	Aged 64+	3866	53.0	86,495	4469.6
	Unknown	1	0.0	.	.
Deaths	Aged 4 or less	1	0.0	29,021	.
	Aged 18 to 24	4	0.2	44,273	.
	Aged 25 to 49	155	6.8	187064	82.86
	Aged 50 to 64	423	18.4	102746	411.69
	Aged 64+	1713	74.6	86,495	1980.5

Note1: Population data source for calculating rate estimates: U.S. Census Bureau, ACS 5-year estimate.

Note2: Rates for categories with fewer than 12 cases are suppressed due to high relative standard error.

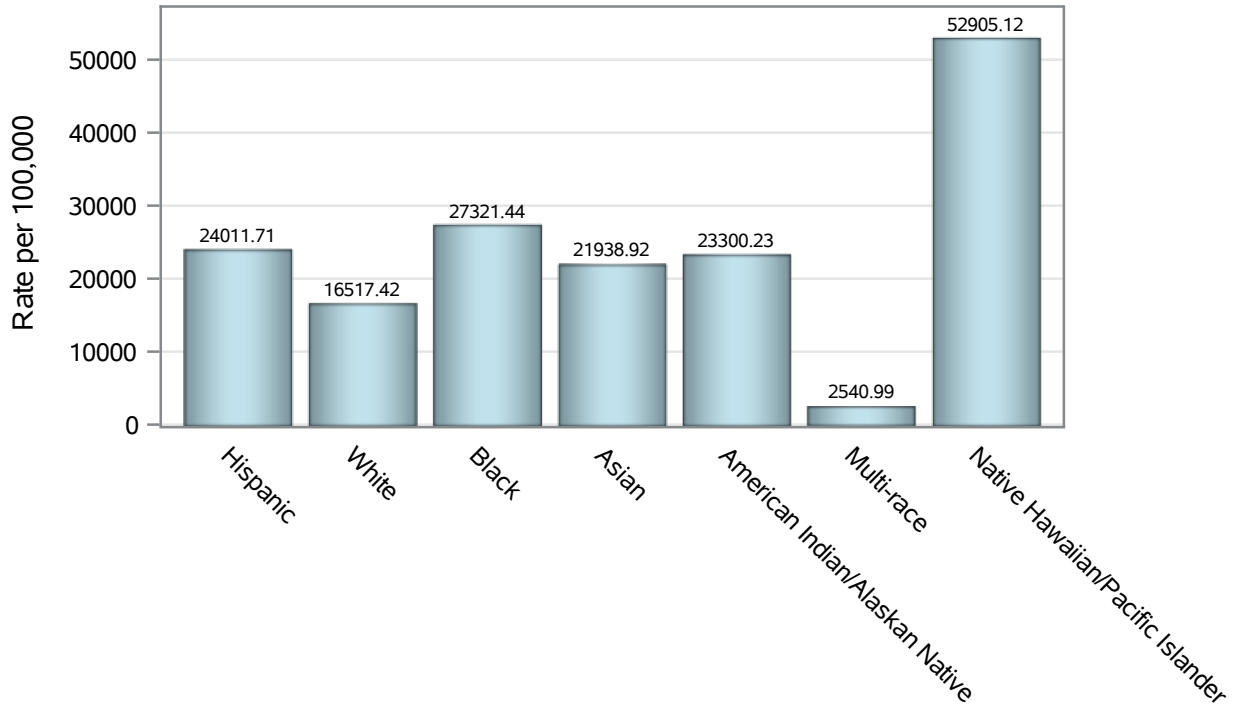
Note3: Hospitalizations are regardless of deceased status; Deaths are regardless of hospitalization status

Investigations are ongoing; data are subject to change.

Reporting through 27MAR2023

Henderson zip codes include 89002, 89011, 89012, 89014, 89015, 89044, 89052, 89074, 89119, 89120, 89122, 89123, 89124, 89183.

Case Race/Ethnicity Rates in Henderson

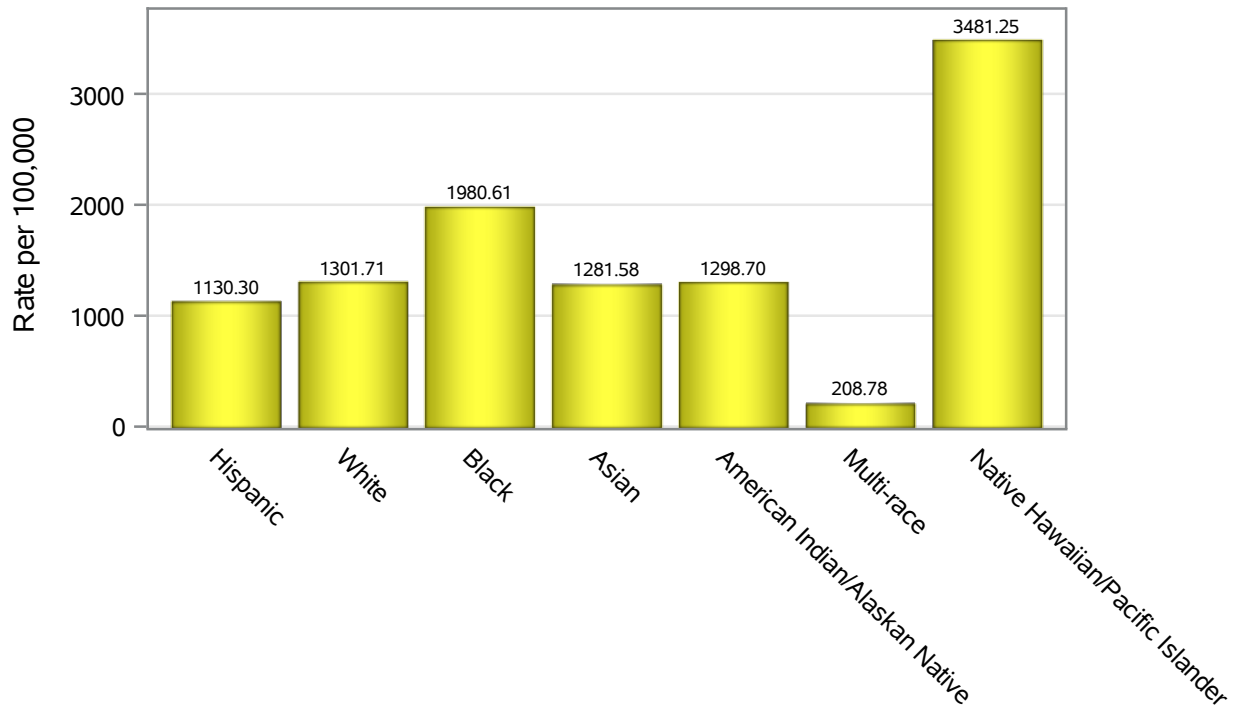


Investigations are ongoing; data are subject to change.

Reporting through 27MAR2023

Henderson zip codes include 89002, 89011, 89012, 89014, 89015, 89044, 89052, 89074, 89119, 89120, 89122, 89123, 89124, 89183.

Hospitalization Race/Ethnicity Rates in Henderson

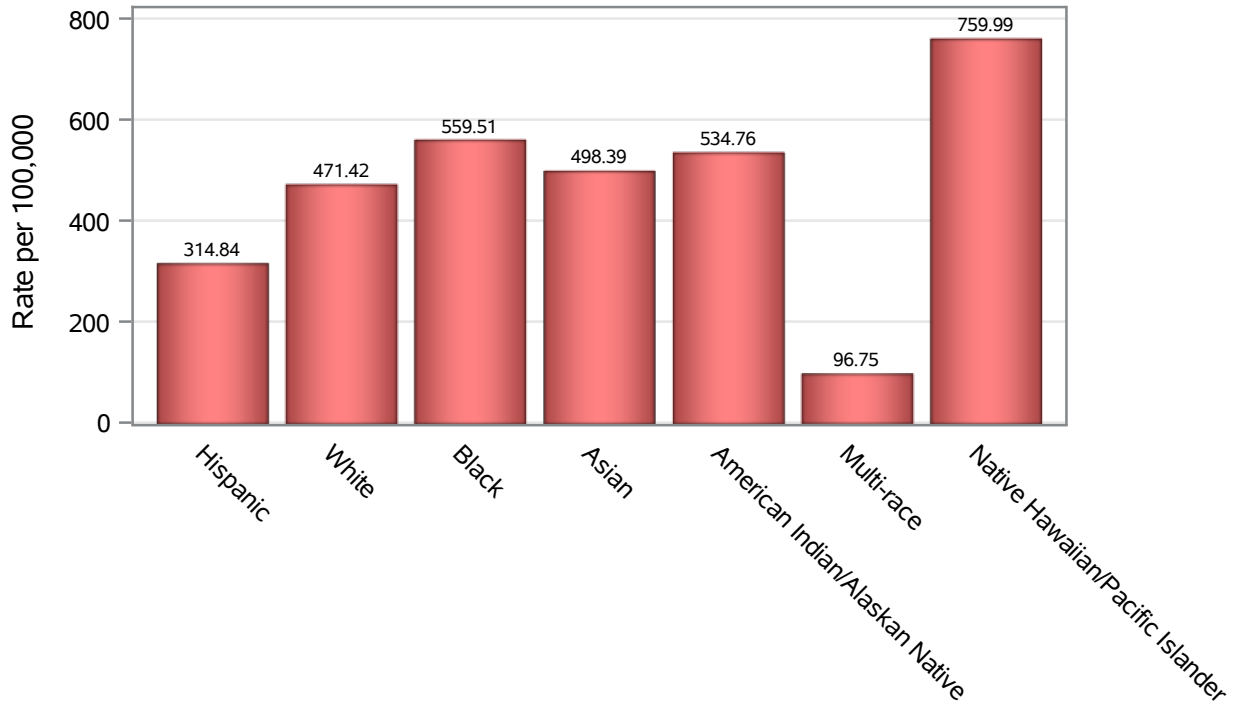


Investigations are ongoing; data are subject to change.

Reporting through 27MAR2023

Henderson zip codes include 89002, 89011, 89012, 89014, 89015, 89044, 89052, 89074, 89119, 89120, 89122, 89123, 89124, 89183.

Death Race/Ethnicity Rates in Henderson



Investigations are ongoing; data are subject to change.

Reporting through 27MAR2023

Henderson zip codes include 89002, 89011, 89012, 89014, 89015, 89044, 89052, 89074, 89119, 89120, 89122, 89123, 89124, 89183.

Table 6: Race/Ethnicity and COVID19 in Henderson

Case Status	Race Ethnicity Categories	N	%	Population	Rate per 100,000
Cases	Hispanic	29210	22.6	121649	24012
	White	48142	37.2	291462	16517
	Black	10401	8.0	38,069	27321
	Asian	11401	8.8	51,967	21939
	American Indian/Alaskan Native	610	0.5	2,618	23300
	Multi-race	499	0.4	19,638	2541.0
	Native Hawaiian/Pacific Islander	2158	1.7	4,079	52905
	Unknown	26917	20.8	.	.
Hospitalizations	Hispanic	1375	18.9	121649	1130.3
	White	3794	52.0	291462	1301.7
	Black	754	10.3	38,069	1980.6
	Asian	666	9.1	51,967	1281.6
	American Indian/Alaskan Native	34	0.5	2,618	1298.7
	Multi-race	41	0.6	19,638	208.78
	Native Hawaiian/Pacific Islander	142	1.9	4,079	3481.2
	Unknown	485	6.7	.	.
Deaths	Hispanic	383	16.7	121649	314.84
	White	1374	59.8	291462	471.42
	Black	213	9.3	38,069	559.51
	Asian	259	11.3	51,967	498.39
	American Indian/Alaskan Native	14	0.6	2,618	534.76
	Multi-race	19	0.8	19,638	96.75
	Native Hawaiian/Pacific Islander	31	1.4	4,079	759.99
	Unknown	3	0.1	.	.

Note1: Population data source for calculating rate estimates: U.S. Census Bureau, ACS 5-year estimate.

Note2: Rates for categories with fewer than 12 cases are suppressed due to high relative standard error.

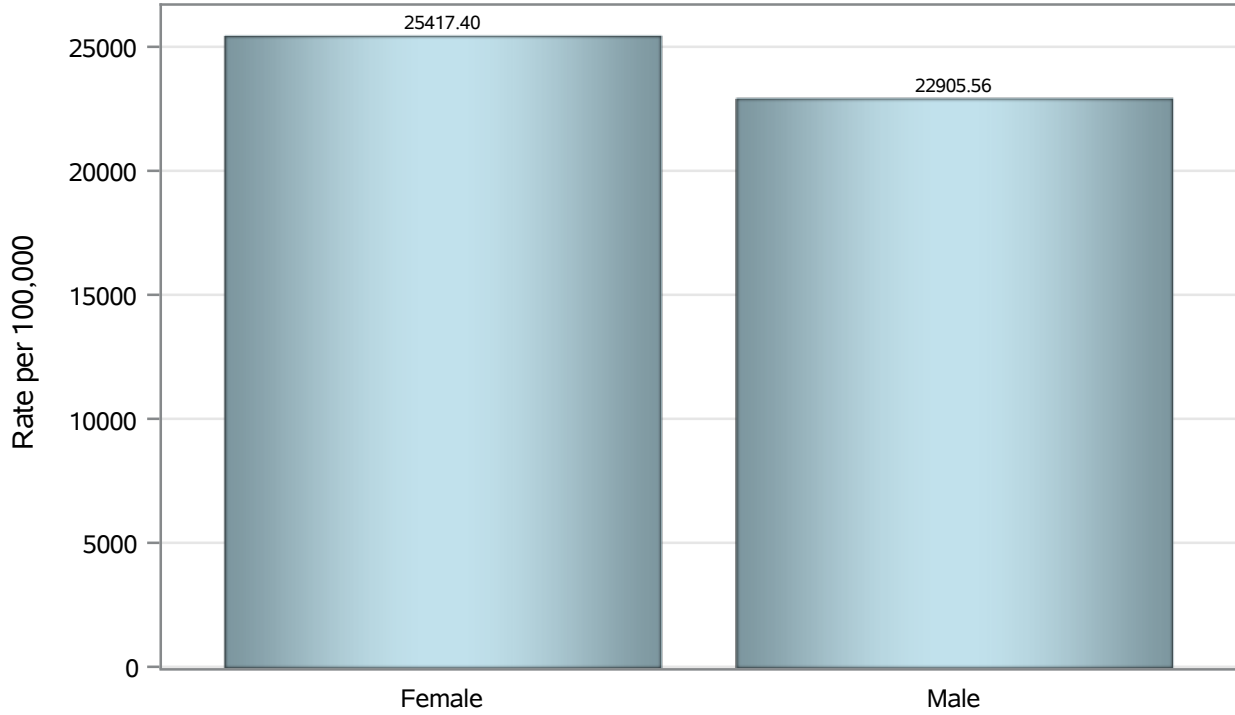
Note3: Hospitalizations are regardless of deceased status; Deaths are regardless of hospitalization status

Investigations are ongoing; data are subject to change.

Reporting through 27MAR2023

Henderson zip codes include 89002, 89011, 89012, 89014, 89015, 89044, 89052, 89074, 89119, 89120, 89122, 89123, 89124, 89183.

Case Birth Sex Rates in Henderson

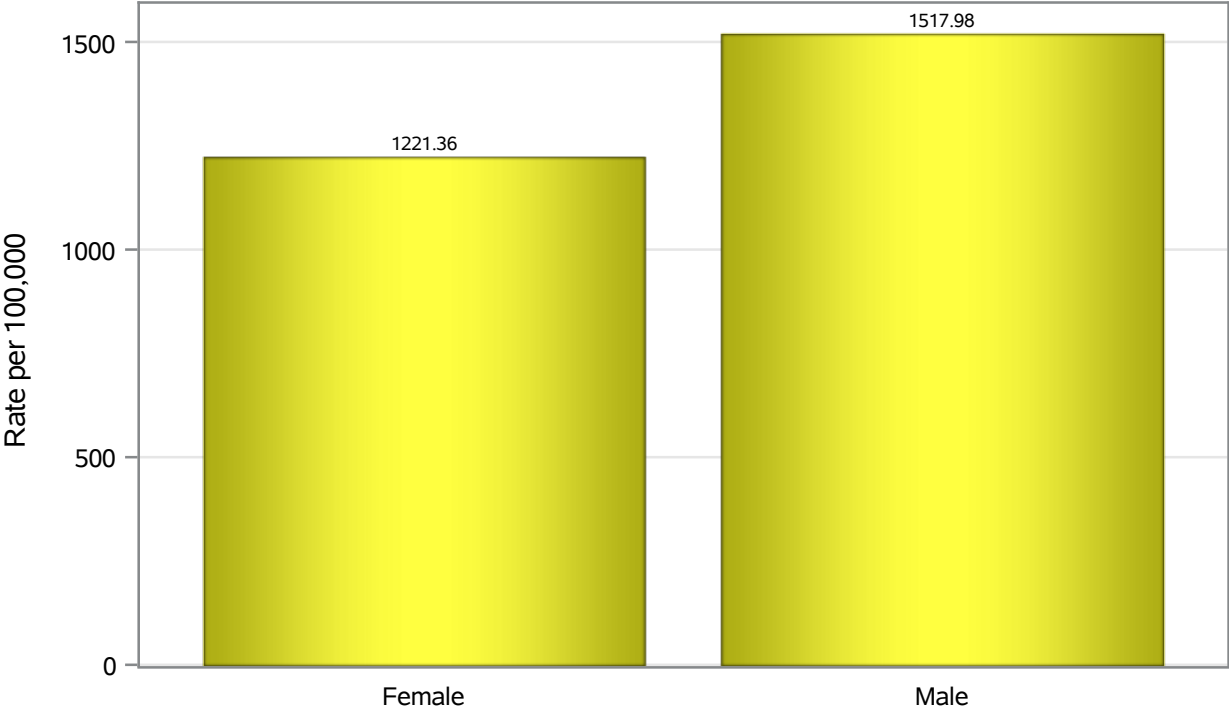


Investigations are ongoing; data are subject to change.

Reporting through 27MAR2023

Henderson zip codes include 89002, 89011, 89012, 89014, 89015, 89044, 89052, 89074, 89119, 89120, 89122, 89123, 89124, 89183.

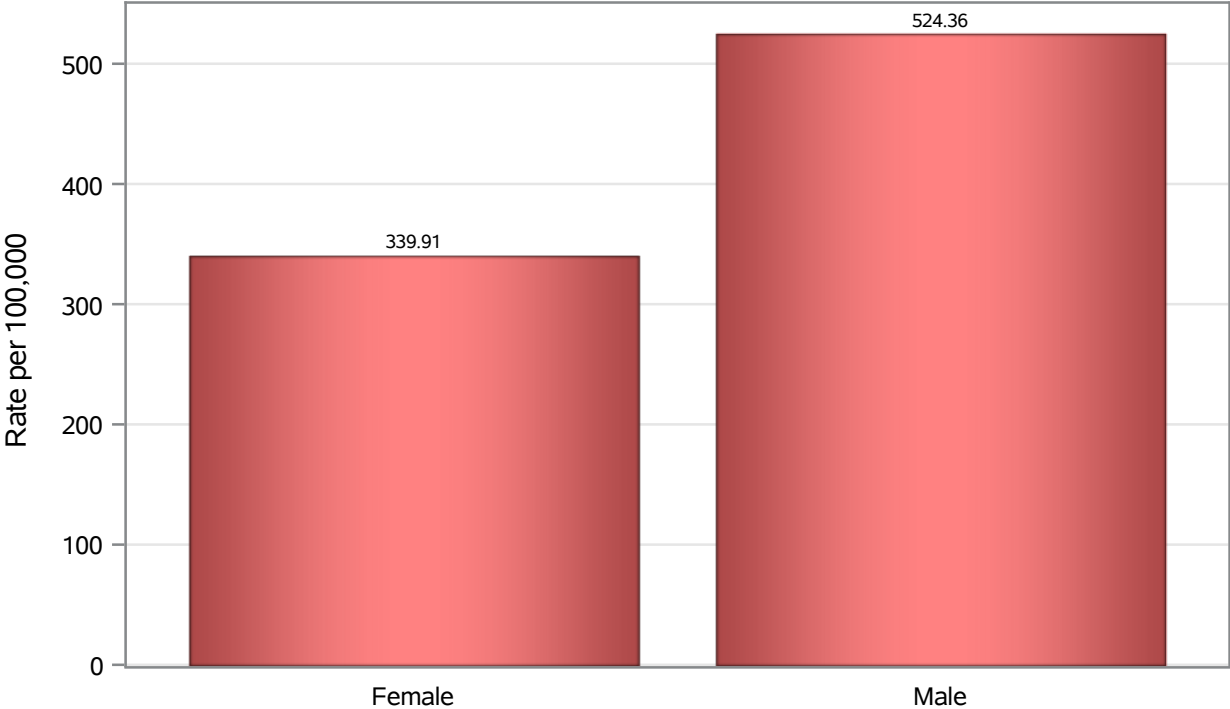
Hospitalization Birth Sex Rates in Henderson



Investigations are ongoing; data are subject to change.
Reporting through 27MAR2023

Henderson zip codes include 89002, 89011, 89012, 89014, 89015, 89044, 89052, 89074, 89119, 89120, 89122, 89123, 89124, 89183.

Death Birth Sex Rates in Henderson



Investigations are ongoing; data are subject to change.
Reporting through 27MAR2023

Henderson zip codes include 89002, 89011, 89012, 89014, 89015, 89044, 89052, 89074, 89119, 89120, 89122, 89123, 89124, 89183.

Table 7: Birth Sex and COVID19 in Henderson

Case Status	Birth Sex Categories	N	%	Population	Rate per 100,000
Cases	Female	67822	52.4	266833	25417
	Male	60675	46.9	264892	22906
	Unknown	841	0.7	.	.
Hospitalizations	Female	3259	44.7	266833	1221.4
	Male	4021	55.2	264892	1518.0
	Unknown	11	0.2	.	.
Deaths	Female	907	39.5	266833	339.91
	Male	1389	60.5	264892	524.36

Note1: Population data source for calculating rate estimates: U.S. Census Bureau, ACS 5-year estimate.

Note2: Rates for categories with fewer than 12 cases are suppressed due to high relative standard error.

Note3: Hospitalizations are regardless of deceased status; Deaths are regardless of hospitalization status

Investigations are ongoing; data are subject to change.

Reporting through 27MAR2023

Henderson zip codes include 89002, 89011, 89012, 89014, 89015, 89044, 89052, 89074, 89119, 89120, 89122, 89123, 89124, 89183.