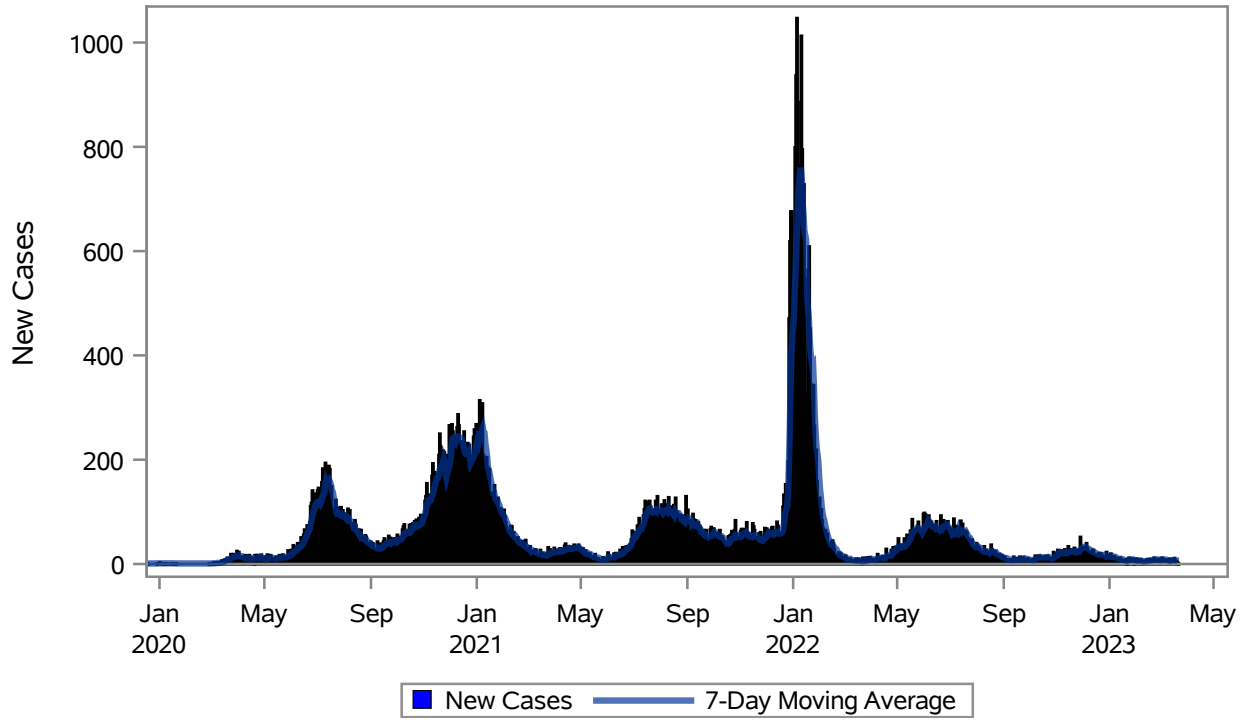


COVID19 Cases for North Las Vegas, 7-Day Moving Average



Investigations are ongoing; data are subject to change.

Reporting through 21MAR2023

North Las Vegas zip codes include 89030, 89031, 89032, 89033, 89036, 89081, 89084, 89085, 89086, 89087.

Table 1: New COVID19 Cases and 7-Day Moving Average in North Las Vegas, Previous Two Weeks

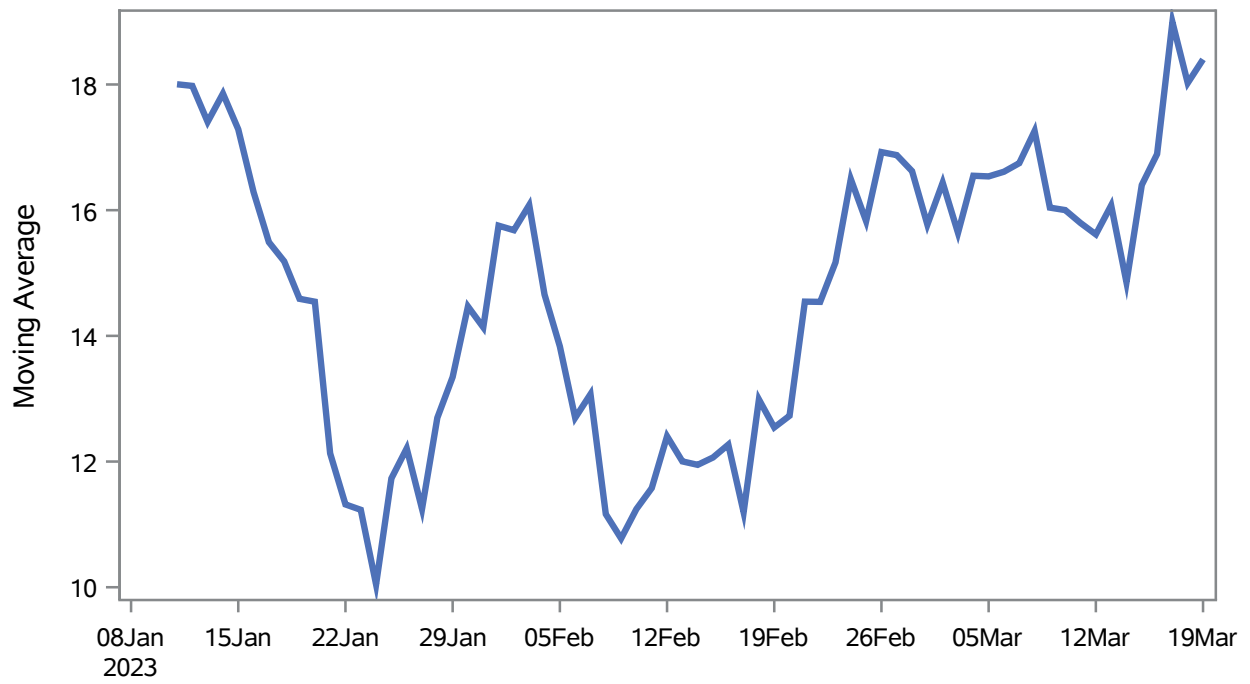
Date (Daily)	New Cases	7-Day Moving Average
08MAR2023	8	8.14
09MAR2023	8	7.57
10MAR2023	4	6.57
11MAR2023	10	6.86
12MAR2023	4	6.14
13MAR2023	8	6.86
14MAR2023	7	7.00
15MAR2023	9	7.14
16MAR2023	11	7.57
17MAR2023	8	8.14
18MAR2023	3	7.14
19MAR2023	6	7.43

Note1: Event Date is calculated as follows based on completed information:
1) Disease onset date 2) Disease diagnosis date 3) Lab result collection date 4) Report date to SNHD.

**Investigations are ongoing; data are subject to change.
Reporting through 21MAR2023**

North Las Vegas zip codes include 89030, 89031, 89032, 89033, 89036, 89081, 89084, 89085, 89086, 89087.

Percent of People Receiving COVID-19 Viral Tests Who Have Positive Results in North Las Vegas



Investigations are ongoing; data are subject to change.

Reporting through 21MAR2023

North Las Vegas zip codes include 89030, 89031, 89032, 89033, 89036, 89081, 89084, 89085, 89086, 89087.

Table 2: Percent of People Receiving COVID-19 Viral Tests Who Have Positive Results in North Las Vegas

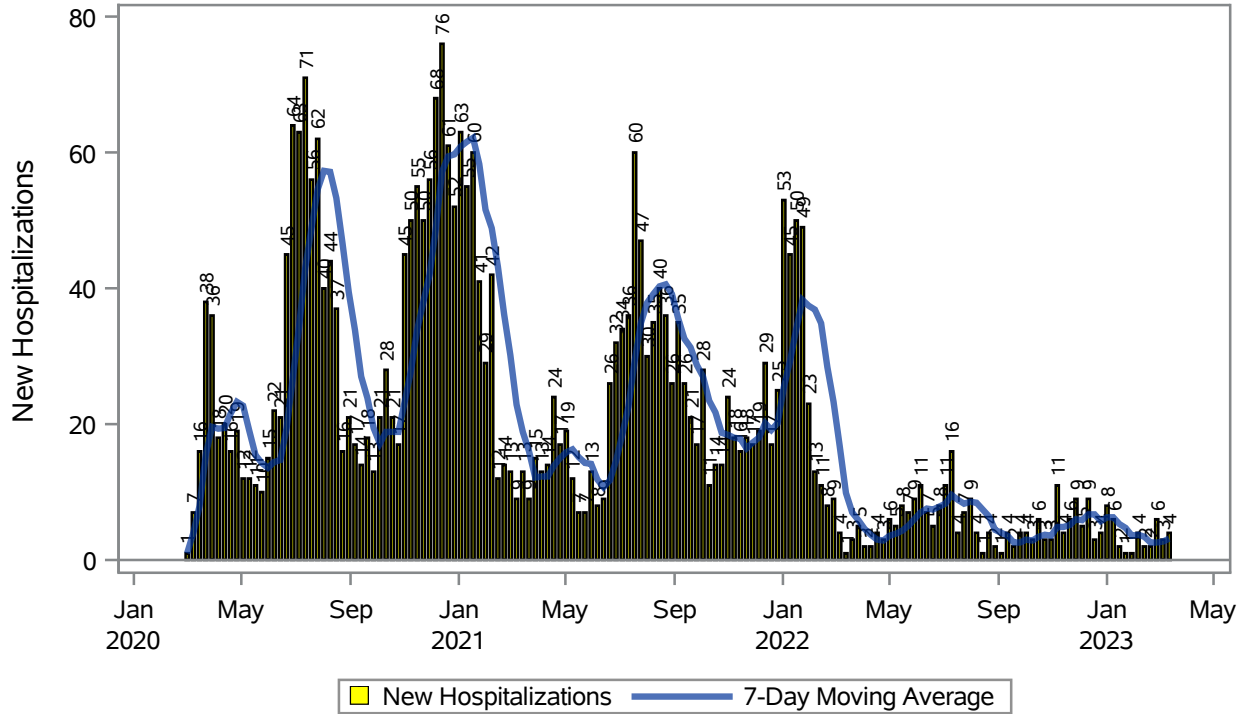
Collection Date	Positive	Negative	Equivocal	Total	% Positivity	7-Day Moving Average
05MAR2023	12	51		63	19.05	16.5
06MAR2023	10	93		103	9.71	16.6
07MAR2023	15	60		75	20.00	16.7
08MAR2023	11	65		76	14.47	17.3
09MAR2023	14	74		88	15.91	16.0
10MAR2023	9	122		131	6.87	16.0
11MAR2023	14	43		57	24.56	15.8
12MAR2023	8	37		45	17.78	15.6
13MAR2023	11	74		85	12.94	16.1
14MAR2023	8	62		70	11.43	14.9
15MAR2023	20	59		79	25.32	16.4
16MAR2023	12	50		62	19.35	16.9
17MAR2023	11	40		51	21.57	19.0
18MAR2023	8	37		45	17.78	18.0
19MAR2023	10	39		49	20.41	18.4

Note: Testing Data includes a 3 day delay

**Investigations are ongoing; data are subject to change.
Reporting through 21MAR2023**

North Las Vegas zip codes include 89030, 89031, 89032, 89033, 89036, 89081, 89084, 89085, 89086, 89087.

COVID19 Hospitalizations for North Las Vegas, 7-Day Moving Average



Investigations are ongoing; data are subject to change.

Reporting through 21MAR2023

North Las Vegas zip codes include 89030, 89031, 89032, 89033, 89036, 89081, 89084, 89085, 89086, 89087.

Table 3: New COVID19-Related Hospitalizations and 7-Day Moving Average in North Las Vegas, previous month

Week	Hospitalizations	7-Day Moving Average
26FEB2023	6	2.57
05MAR2023	3	2.71
12MAR2023	4	3.14

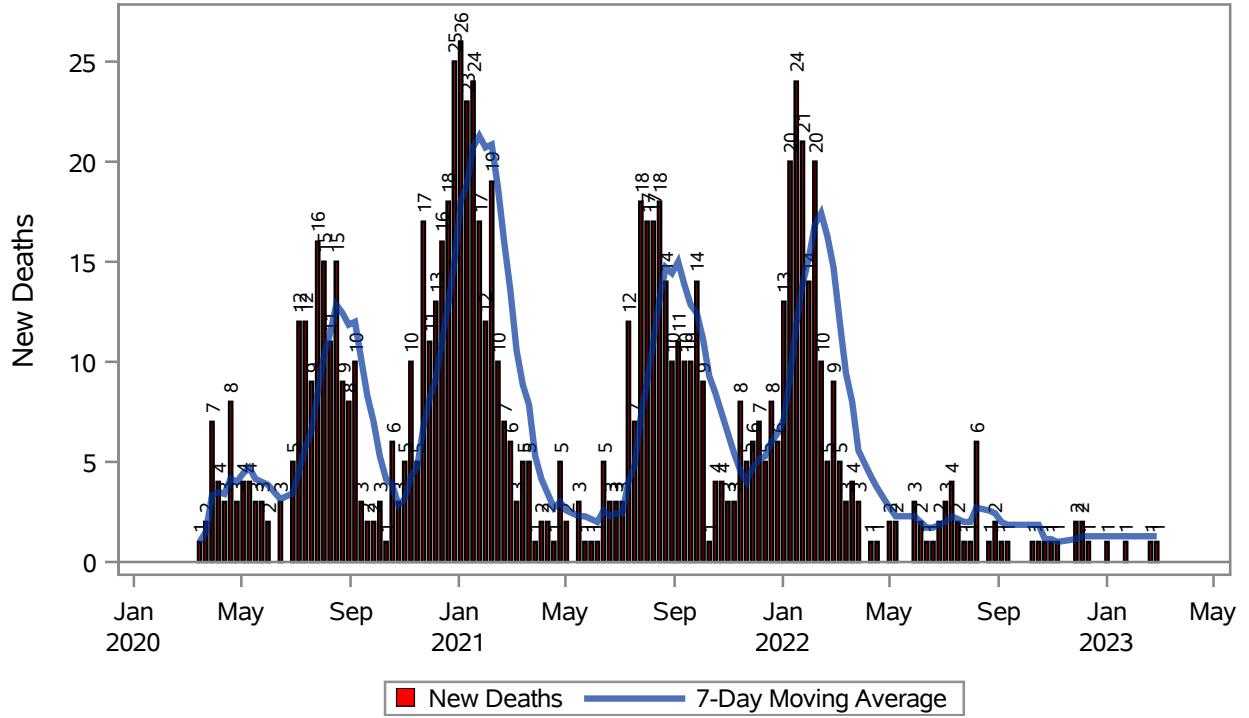
Note1: Admission Date is calculated as follows based on completed information:
A) COVID19 Case is hospitalized B) COVID19 Case has a hospital admission date.

If admission date is missing, then the following is substituted temporarily, in order:
1) Disease onset date 2) Disease diagnosis date 3) Lab result collection date 4) Report date to SNHD.

**Investigations are ongoing; data are subject to change.
Reporting through 21MAR2023**

North Las Vegas zip codes include 89030, 89031, 89032, 89033, 89036, 89081, 89084, 89085, 89086, 89087.

COVID19 Deaths for North Las Vegas, 7-Day Moving Average



Investigations are ongoing; data are subject to change.
Reporting through 21MAR2023

North Las Vegas zip codes include 89030, 89031, 89032, 89033, 89036, 89081, 89084, 89085, 89086, 89087.

Table 4: New COVID19-Related Deaths and 7-Day Moving Average in North Las Vegas, Previous Month

Week	Deaths	7-Day Moving Average
26FEB2023	1	1.29

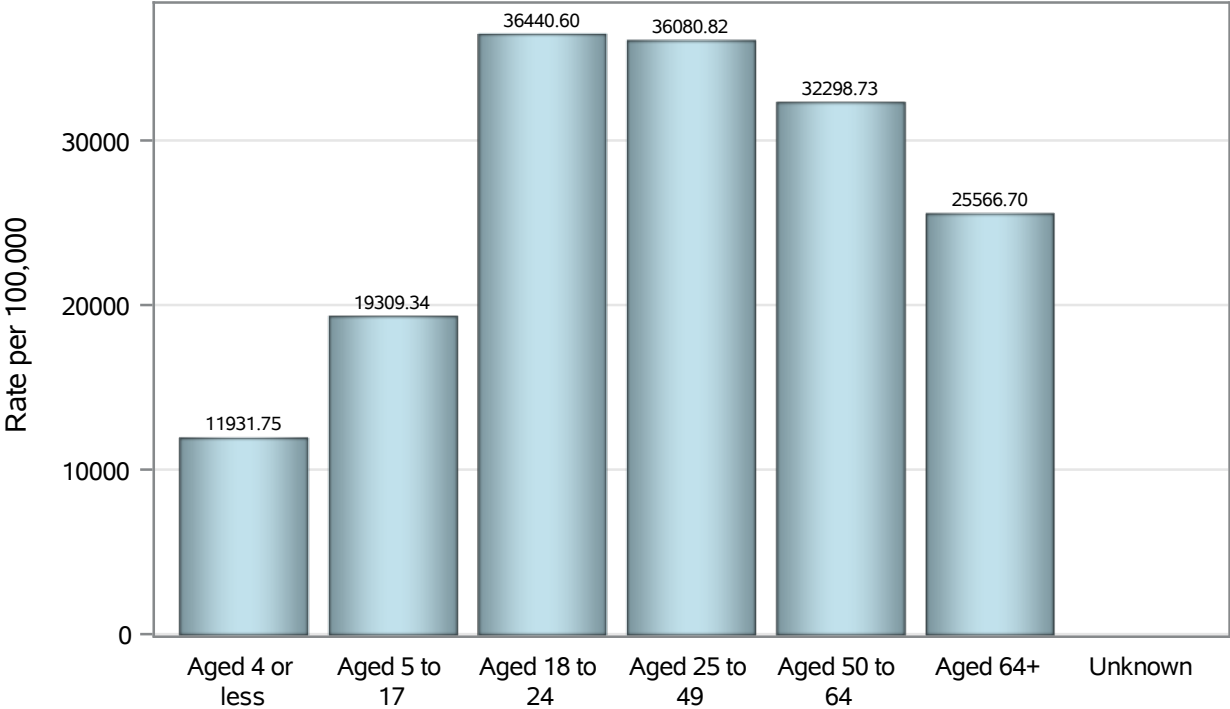
Note1: Date of Death is calculated as follows based on completed information:
A) COVID19 Case is reported as deceased B) COVID19 Case has a reported date of death.

If date of death is missing, then the following is substituted temporarily, in order:
1) Disease onset date 2) Disease diagnosis date
3) Lab result collection date 4) Report date to SNHD.

**Investigations are ongoing; data are subject to change.
Reporting through 21MAR2023**

North Las Vegas zip codes include 89030, 89031, 89032, 89033, 89036, 89081, 89084, 89085, 89086, 89087.

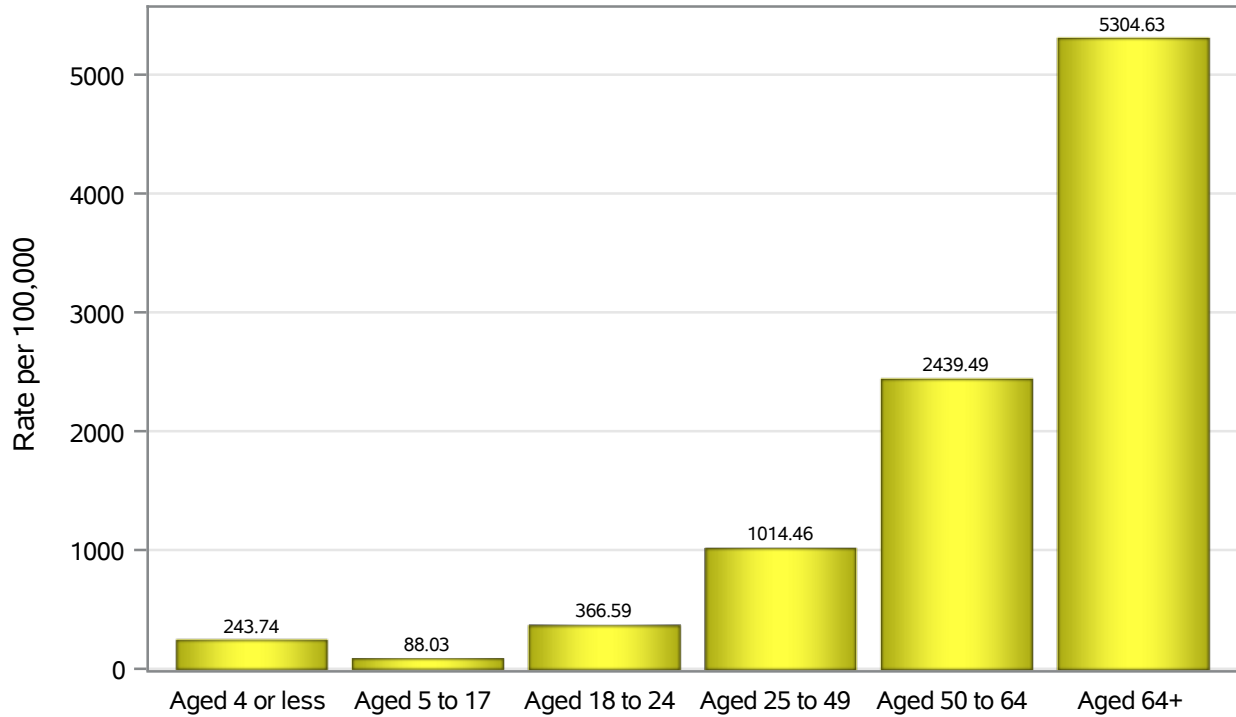
Case Age Rates in North Las Vegas



Investigations are ongoing; data are subject to change.
Reporting through 21MAR2023

North Las Vegas zip codes include 89030, 89031, 89032, 89033, 89036, 89081, 89084, 89085, 89086, 89087.

Hospitalization Age Rates in North Las Vegas

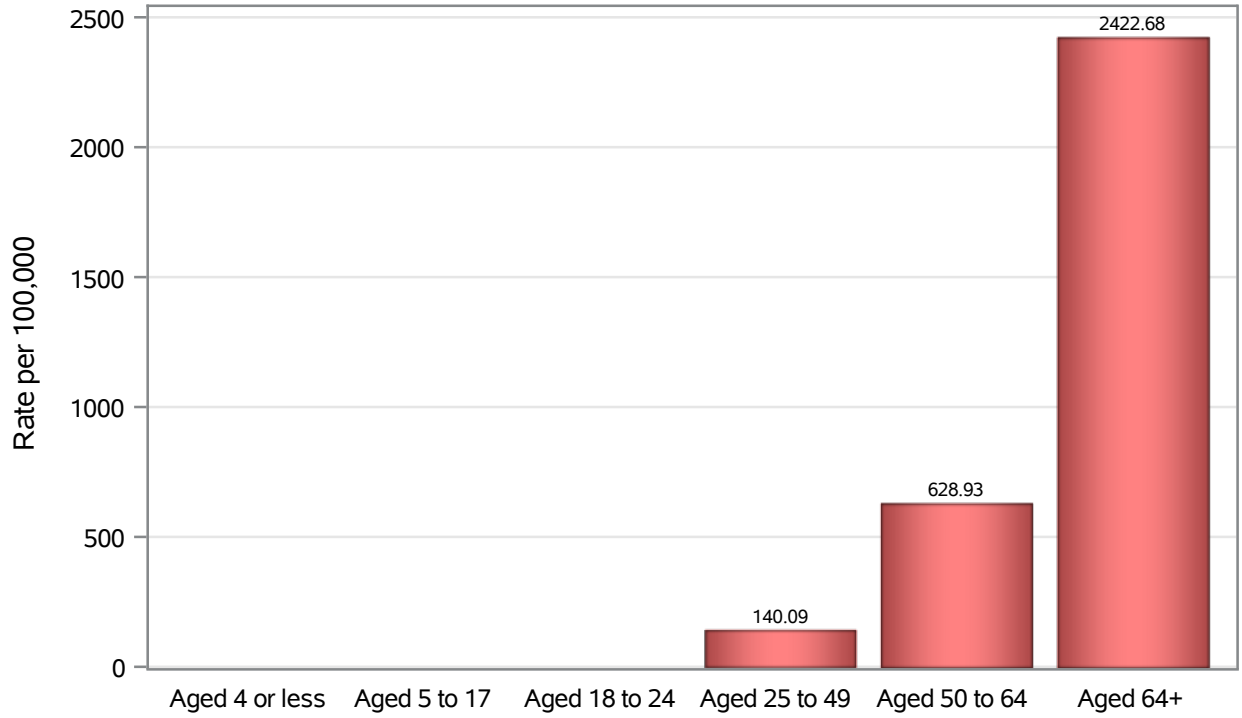


Investigations are ongoing; data are subject to change.

Reporting through 21MAR2023

North Las Vegas zip codes include 89030, 89031, 89032, 89033, 89036, 89081, 89084, 89085, 89086, 89087.

Death Age Rates in North Las Vegas



Investigations are ongoing; data are subject to change.

Reporting through 21MAR2023

North Las Vegas zip codes include 89030, 89031, 89032, 89033, 89036, 89081, 89084, 89085, 89086, 89087.

Table 5: Age and COVID19 in North Las Vegas

Case Status	Age Categories	N	%	Population	Rate per 100,000
Cases	Aged 4 or less	2105	3.1	17,642	11932
	Aged 5 to 17	9651	14.2	49,981	19309
	Aged 18 to 24	8350	12.3	22,914	36441
	Aged 25 to 49	29876	44.0	82,803	36081
	Aged 50 to 64	11863	17.5	36,729	32299
	Aged 64+	6068	8.9	23,734	25567
	Unknown	15	0.0	.	.
Hospitalizations	Aged 4 or less	43	1.4	17,642	243.74
	Aged 5 to 17	44	1.4	49,981	88.03
	Aged 18 to 24	84	2.7	22,914	366.59
	Aged 25 to 49	840	26.5	82,803	1014.5
	Aged 50 to 64	896	28.3	36,729	2439.5
	Aged 64+	1259	39.8	23,734	5304.6
	Deaths	Aged 4 or less	3	0.3	17,642
Aged 5 to 17		1	0.1	49,981	.
Aged 18 to 24		2	0.2	22,914	.
Aged 25 to 49		116	12.5	82,803	140.09
Aged 50 to 64		231	24.9	36,729	628.93
Aged 64+		575	62.0	23,734	2422.7

Note1: Population data source for calculating rate estimates: U.S. Census Bureau, ACS 5-year estimate.

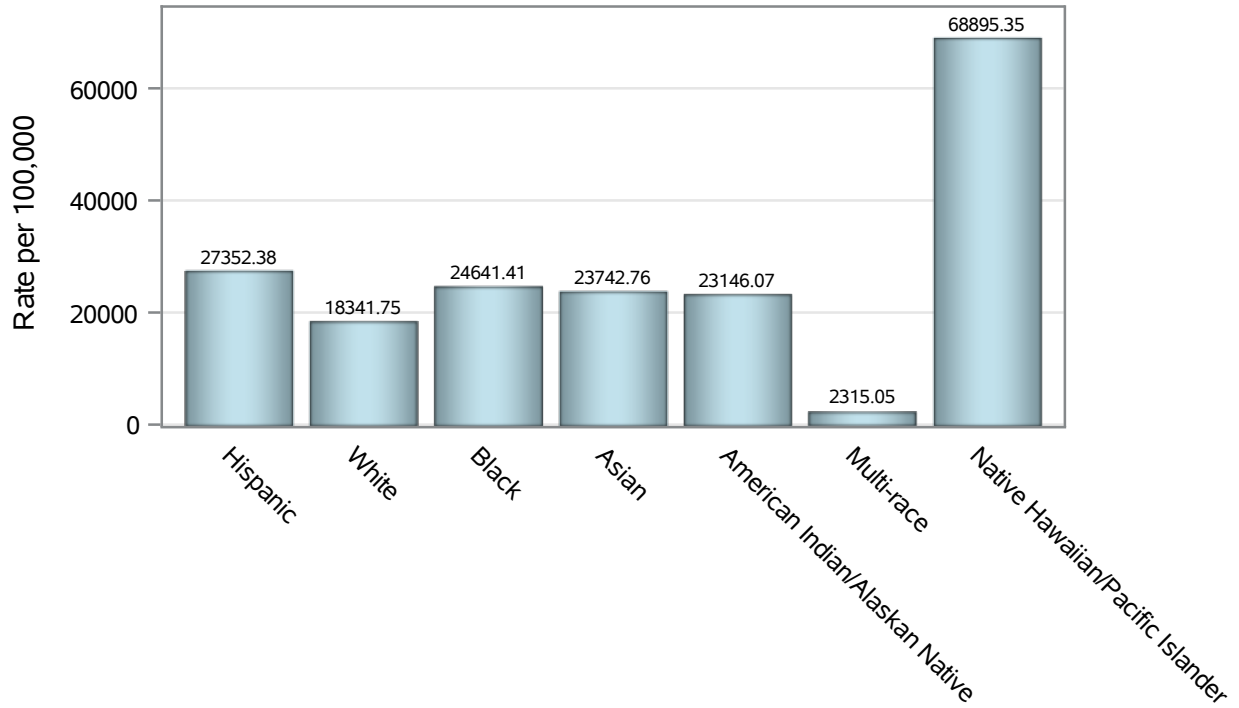
Note2: Rates for categories with fewer than 12 cases are suppressed due to high relative standard error.

Note3: Hospitalizations are regardless of deceased status; Deaths are regardless of hospitalization status

**Investigations are ongoing; data are subject to change.
Reporting through 21MAR2023**

North Las Vegas zip codes include 89030, 89031, 89032, 89033, 89036, 89081, 89084, 89085, 89086, 89087.

Case Race/Ethnicity Rates in North Las Vegas

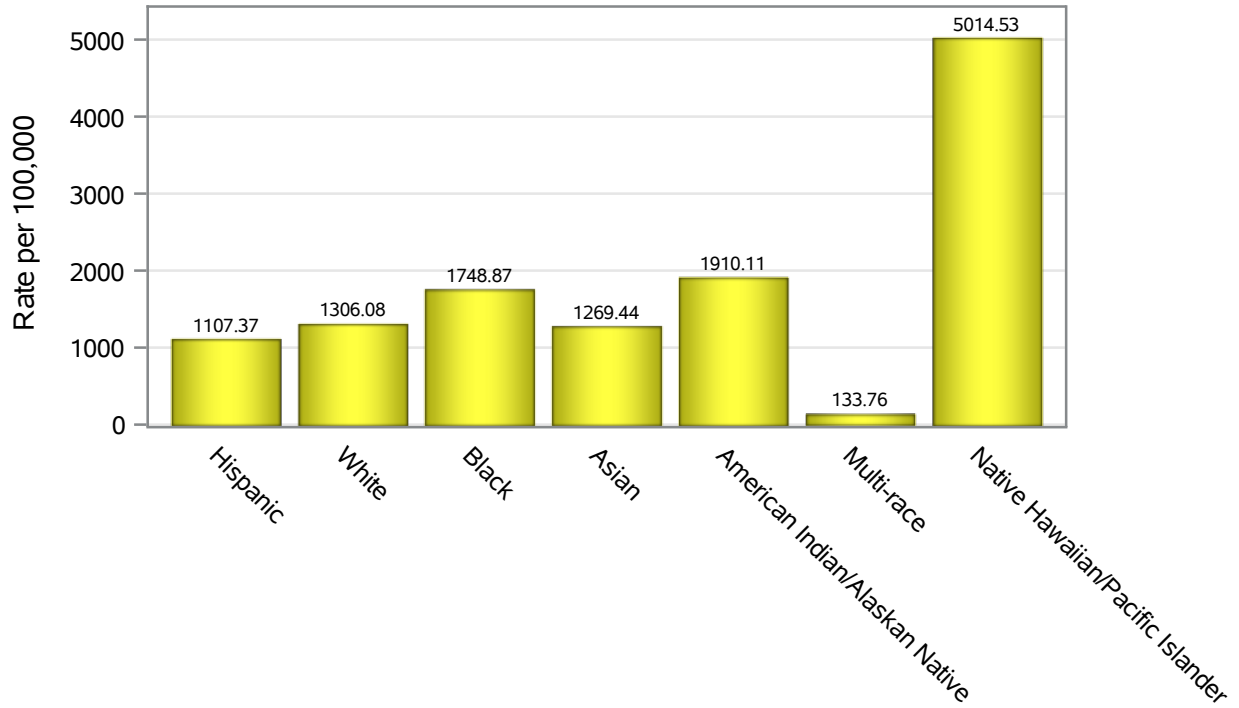


Investigations are ongoing; data are subject to change.

Reporting through 21MAR2023

North Las Vegas zip codes include 89030, 89031, 89032, 89033, 89036, 89081, 89084, 89085, 89086, 89087.

Hospitalization Race/Ethnicity Rates in North Las Vegas

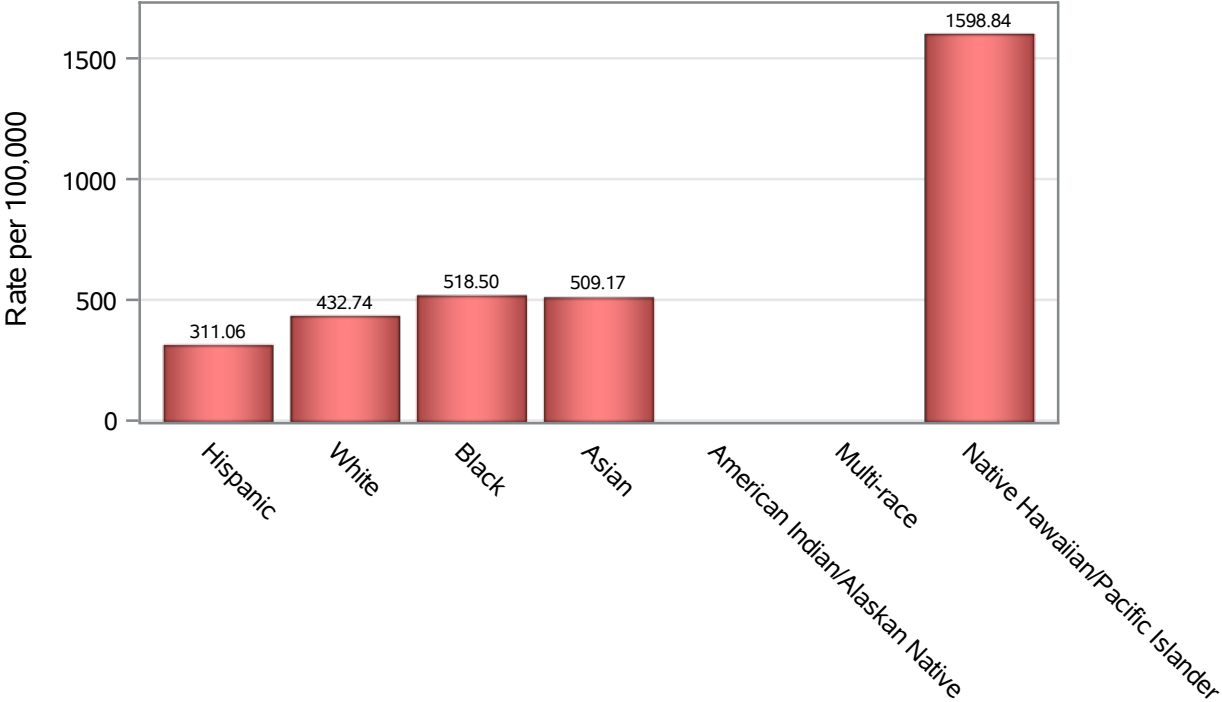


Investigations are ongoing; data are subject to change.

Reporting through 21MAR2023

North Las Vegas zip codes include 89030, 89031, 89032, 89033, 89036, 89081, 89084, 89085, 89086, 89087.

Death Race/Ethnicity Rates in North Las Vegas



Investigations are ongoing; data are subject to change.

Reporting through 21MAR2023

North Las Vegas zip codes include 89030, 89031, 89032, 89033, 89036, 89081, 89084, 89085, 89086, 89087.

Table 6: Race/Ethnicity and COVID19 in North Las Vegas

Case Status	Race Ethnicity Categories	N	%	Population	Rate per 100,000
Cases	Hispanic	26380	38.8	96,445	27352
	White	11656	17.2	63,549	18342
	Black	11596	17.1	47,059	24641
	Asian	3404	5.0	14,337	23743
	American Indian/Alaskan Native	206	0.3	890	23146
	Multi-race	225	0.3	9,719	2315.1
	Native Hawaiian/Pacific Islander	948	1.4	1,376	68895
	Unknown	13513	19.9	.	.
Hospitalizations	Hispanic	1068	33.7	96,445	1107.4
	White	830	26.2	63,549	1306.1
	Black	823	26.0	47,059	1748.9
	Asian	182	5.7	14,337	1269.4
	American Indian/Alaskan Native	17	0.5	890	1910.1
	Multi-race	13	0.4	9,719	133.76
	Native Hawaiian/Pacific Islander	69	2.2	1,376	5014.5
	Unknown	164	5.2	.	.
Deaths	Hispanic	300	32.3	96,445	311.06
	White	275	29.6	63,549	432.74
	Black	244	26.3	47,059	518.50
	Asian	73	7.9	14,337	509.17
	American Indian/Alaskan Native	6	0.6	890	.
	Multi-race	7	0.8	9,719	.
	Native Hawaiian/Pacific Islander	22	2.4	1,376	1598.8
	Unknown	1	0.1	.	.

Note1: Population data source for calculating rate estimates: U.S. Census Bureau, ACS 5-year estimate.

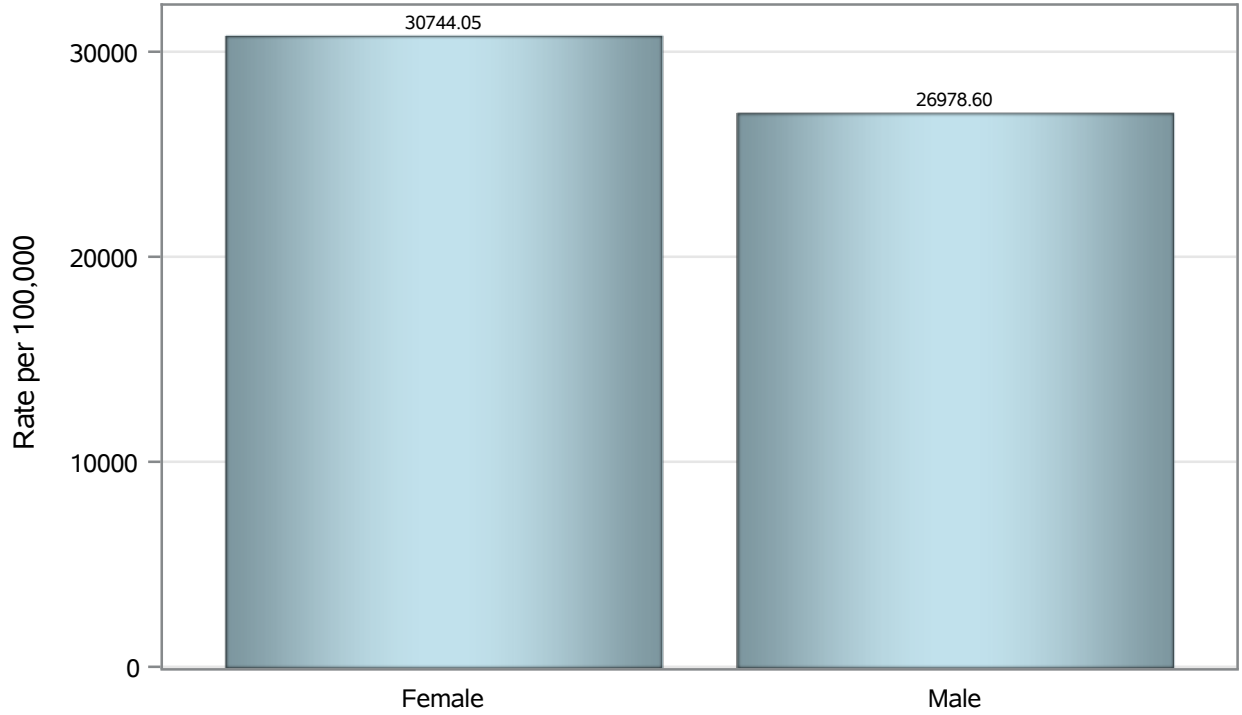
Note2: Rates for categories with fewer than 12 cases are suppressed due to high relative standard error.

Note3: Hospitalizations are regardless of deceased status; Deaths are regardless of hospitalization status

**Investigations are ongoing; data are subject to change.
Reporting through 21MAR2023**

North Las Vegas zip codes include 89030, 89031, 89032, 89033, 89036, 89081, 89084, 89085, 89086, 89087.

Case Birth Sex Rates in North Las Vegas

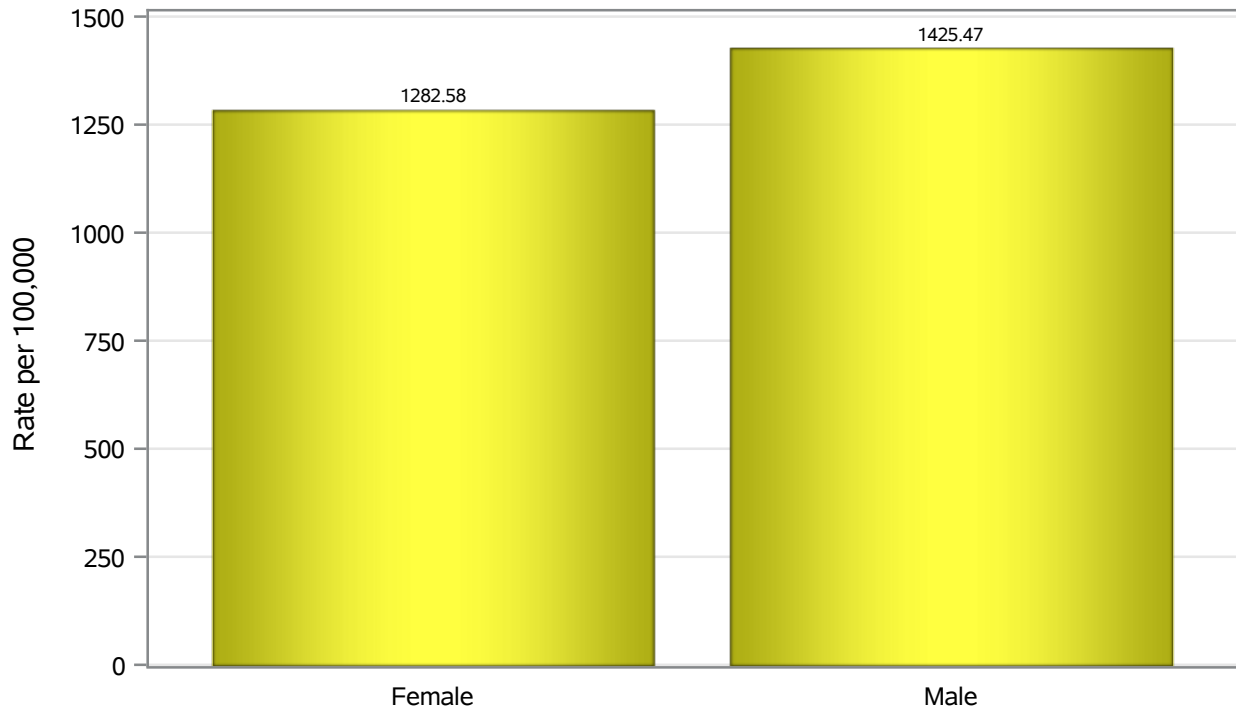


Investigations are ongoing; data are subject to change.

Reporting through 21MAR2023

North Las Vegas zip codes include 89030, 89031, 89032, 89033, 89036, 89081, 89084, 89085, 89086, 89087.

Hospitalization Birth Sex Rates in North Las Vegas

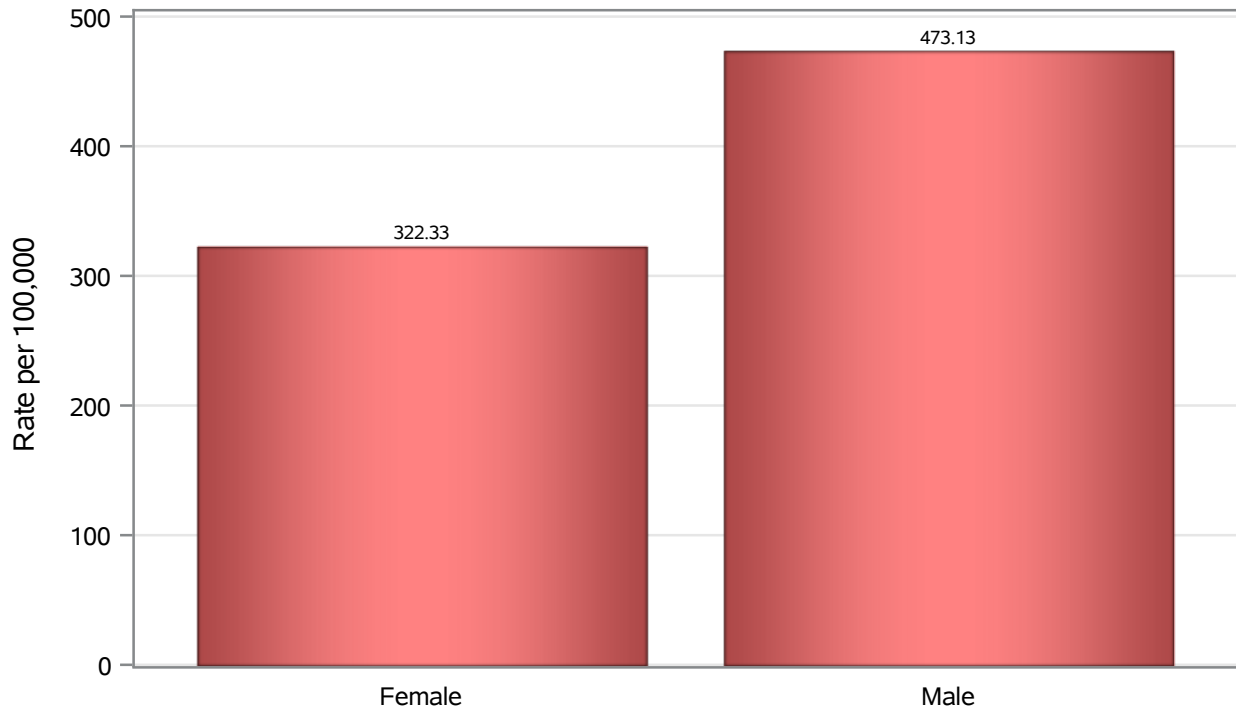


Investigations are ongoing; data are subject to change.

Reporting through 21MAR2023

North Las Vegas zip codes include 89030, 89031, 89032, 89033, 89036, 89081, 89084, 89085, 89086, 89087.

Death Birth Sex Rates in North Las Vegas



Investigations are ongoing; data are subject to change.

Reporting through 21MAR2023

North Las Vegas zip codes include 89030, 89031, 89032, 89033, 89036, 89081, 89084, 89085, 89086, 89087.

Table 7: Birth Sex and COVID19 in North Las Vegas

Case Status	Birth Sex Categories	N	%	Population	Rate per 100,000
Cases	Female	36531	53.8	118823	30744
	Male	31020	45.7	114980	26979
	Unknown	377	0.6	.	.
Hospitalizations	Female	1524	48.1	118823	1282.6
	Male	1639	51.8	114980	1425.5
	Unknown	3	0.1	.	.
Deaths	Female	383	41.3	118823	322.33
	Male	544	58.6	114980	473.13
	Unknown	1	0.1	.	.

Note1: Population data source for calculating rate estimates: U.S. Census Bureau, ACS 5-year estimate.

Note2: Rates for categories with fewer than 12 cases are suppressed due to high relative standard error.

Note3: Hospitalizations are regardless of deceased status; Deaths are regardless of hospitalization status

**Investigations are ongoing; data are subject to change.
Reporting through 21MAR2023**

North Las Vegas zip codes include 89030, 89031, 89032, 89033, 89036, 89081, 89084, 89085, 89086, 89087.