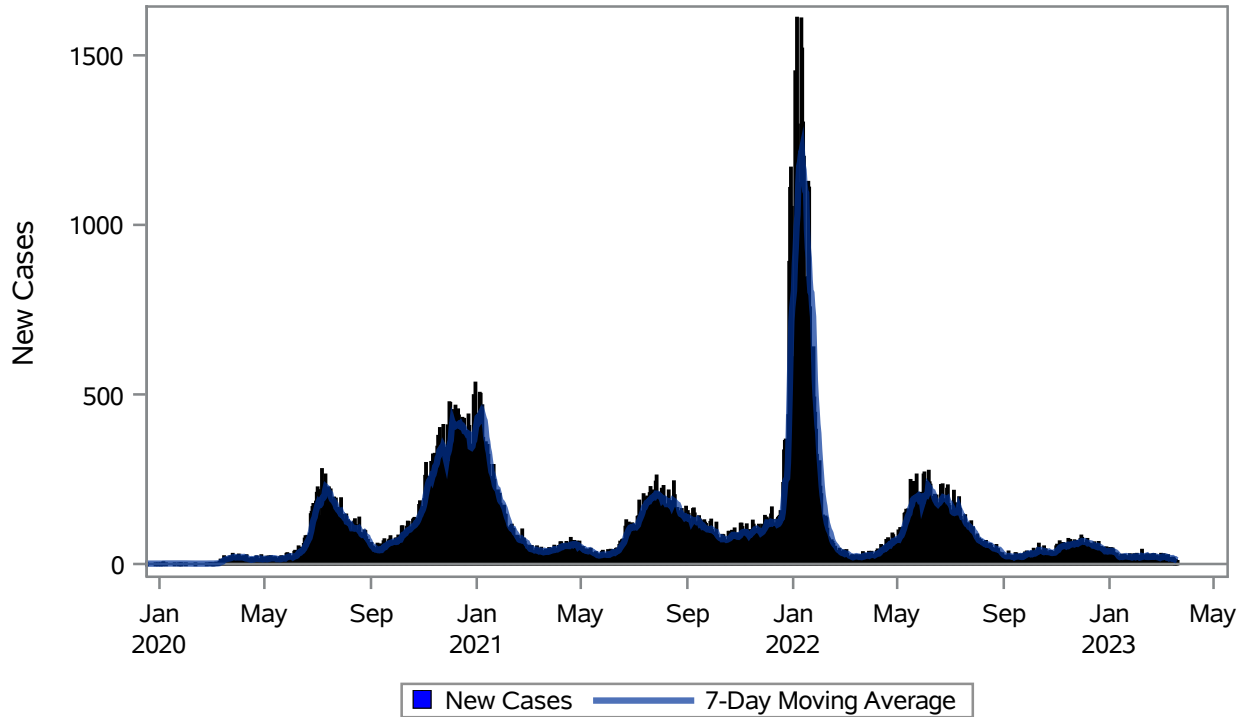


COVID19 Cases for Henderson, 7-Day Moving Average



Investigations are ongoing; data are subject to change.

Reporting through 21MAR2023

Henderson zip codes include 89002, 89011, 89012, 89014, 89015, 89044, 89052, 89074, 89119, 89120, 89122, 89123, 89124, 89183.

Table 1: New COVID19 Cases and 7-Day Moving Average in Henderson, Previous Two Weeks

Date (Daily)	New Cases	7-Day Moving Average
08MAR2023	12	19.29
09MAR2023	25	19.86
10MAR2023	15	19.00
11MAR2023	11	16.57
12MAR2023	17	17.29
13MAR2023	16	17.00
14MAR2023	16	16.00
15MAR2023	18	16.86
16MAR2023	15	15.43
17MAR2023	3	13.71
18MAR2023	11	13.71
19MAR2023	3	11.71

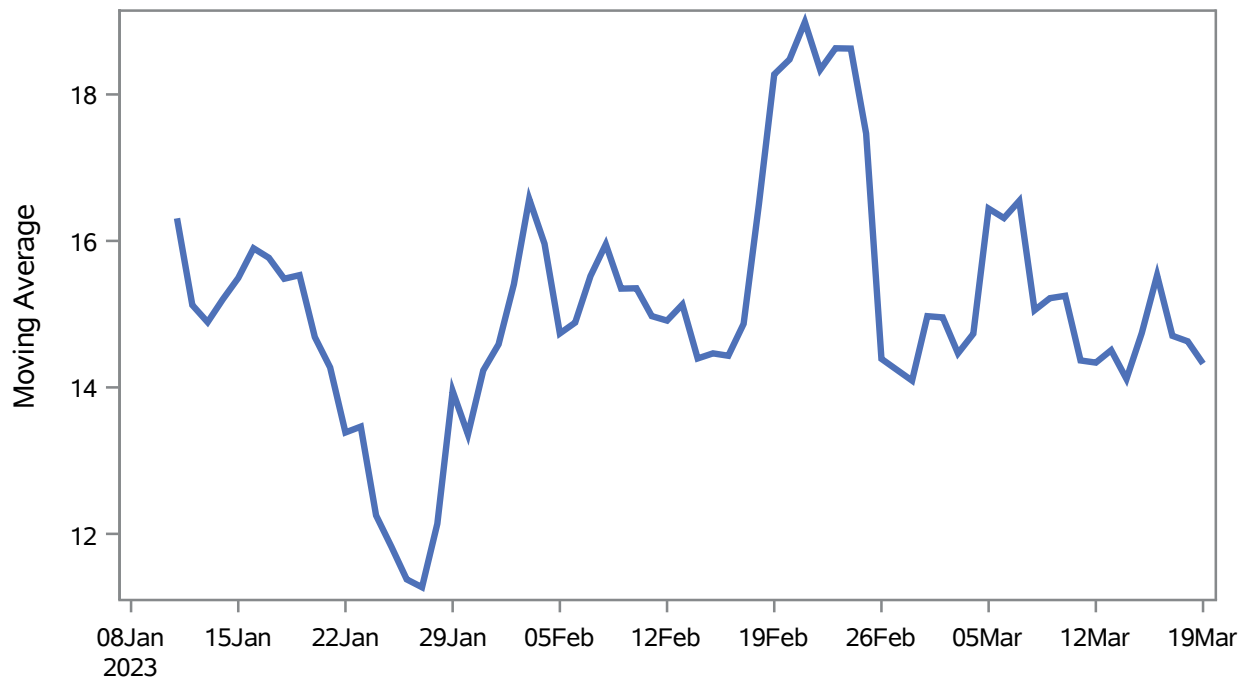
Note1: Event Date is calculated as follows based on completed information:
1) Disease onset date 2) Disease diagnosis date 3) Lab result collection date 4) Report date to SNHD.

Investigations are ongoing; data are subject to change.

Reporting through 21MAR2023

Henderson zip codes include 89002, 89011, 89012, 89014, 89015, 89044, 89052, 89074, 89119, 89120, 89122, 89123, 89124, 89183.

Percent of People Receiving COVID-19 Viral Tests Who Have Positive Results in Henderson



Investigations are ongoing; data are subject to change.

Reporting through 21MAR2023

Henderson zip codes include 89002, 89011, 89012, 89014, 89015, 89044, 89052, 89074, 89119, 89120, 89122, 89123, 89124, 89183.

Table 2: Percent of People Receiving COVID-19 Viral Tests Who Have Positive Results in Henderson

Collection Date	Positive	Negative	Equivocal	Total	% Positivity	7-Day Moving Average
05MAR2023	18	79		97	18.56	16.4
06MAR2023	19	122	1	142	13.38	16.3
07MAR2023	31	133		164	18.90	16.5
08MAR2023	11	123		134	8.21	15.1
09MAR2023	21	124		145	14.48	15.2
10MAR2023	20	103		123	16.26	15.3
11MAR2023	11	91		102	10.78	14.4
12MAR2023	20	89		109	18.35	14.3
13MAR2023	22	129		151	14.57	14.5
14MAR2023	21	109		130	16.15	14.1
15MAR2023	16	111		127	12.60	14.7
16MAR2023	23	92		115	20.00	15.5
17MAR2023	11	94		105	10.48	14.7
18MAR2023	8	69	1	78	10.26	14.6
19MAR2023	12	62		74	16.22	14.3

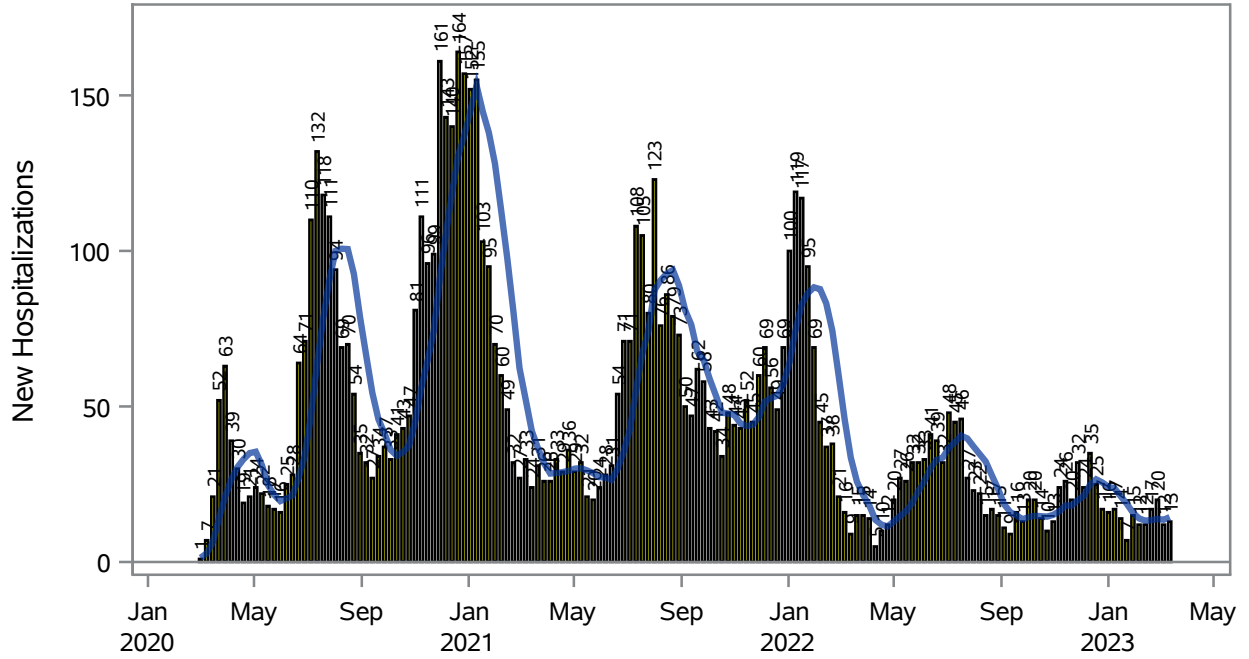
Note: Testing Data includes a 3 day delay

Investigations are ongoing; data are subject to change.

Reporting through 21MAR2023

Henderson zip codes include 89002, 89011, 89012, 89014, 89015, 89044, 89052, 89074, 89119, 89120, 89122, 89123, 89124, 89183.

COVID19 Hospitalizations for Henderson, 7-Day Moving Average



New Hospitalizations
 7-Day Moving Average

Investigations are ongoing; data are subject to change.

Reporting through 21MAR2023

Henderson zip codes include 89002, 89011, 89012, 89014, 89015, 89044, 89052, 89074, 89119, 89120, 89122, 89123, 89124, 89183.

Table 3: New COVID19-Related Hospitalizations and 7-Day Moving Average in Henderson, previous month

Week	Hospitalizations	7-Day Moving Average
26FEB2023	20	13.9
05MAR2023	12	13.6
12MAR2023	13	14.4

Note1: Admission Date is calculated as follows based on completed information:
A) COVID19 Case is hospitalized B) COVID19 Case has a hospital admission date.

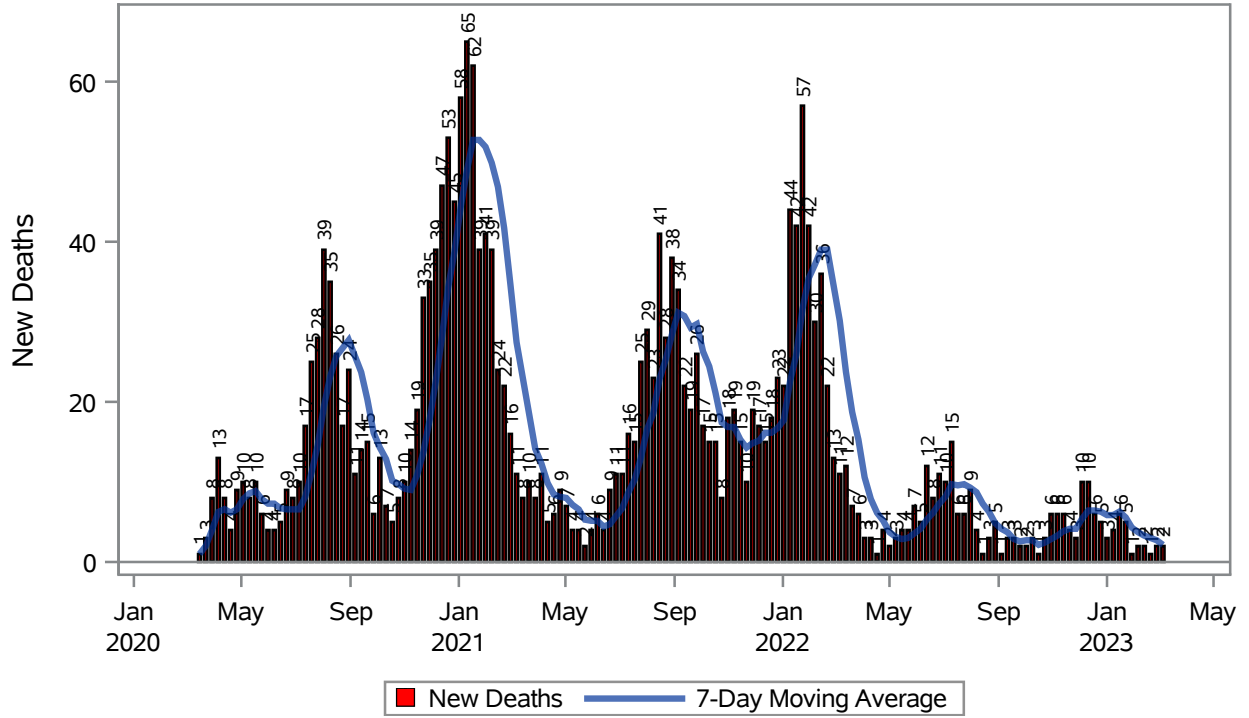
If admission date is missing, then the following is substituted temporarily, in order:
1) Disease onset date 2) Disease diagnosis date 3) Lab result collection date 4) Report date to SNHD.

Investigations are ongoing; data are subject to change.

Reporting through 21MAR2023

Henderson zip codes include 89002, 89011, 89012, 89014, 89015, 89044, 89052, 89074, 89119, 89120, 89122, 89123, 89124, 89183.

COVID19 Deaths for Henderson, 7-Day Moving Average



Investigations are ongoing; data are subject to change.
Reporting through 21MAR2023

Henderson zip codes include 89002, 89011, 89012, 89014, 89015, 89044, 89052, 89074, 89119, 89120, 89122, 89123, 89124, 89183.

Table 4: New COVID19-Related Deaths and 7-Day Moving Average in Henderson, Previous Month

Week	Deaths	7-Day Moving Average
26FEB2023	2	2.71
05MAR2023	2	2.14

Note1: Date of Death is calculated as follows based on completed information:
A) COVID19 Case is reported as deceased B) COVID19 Case has a reported date of death.

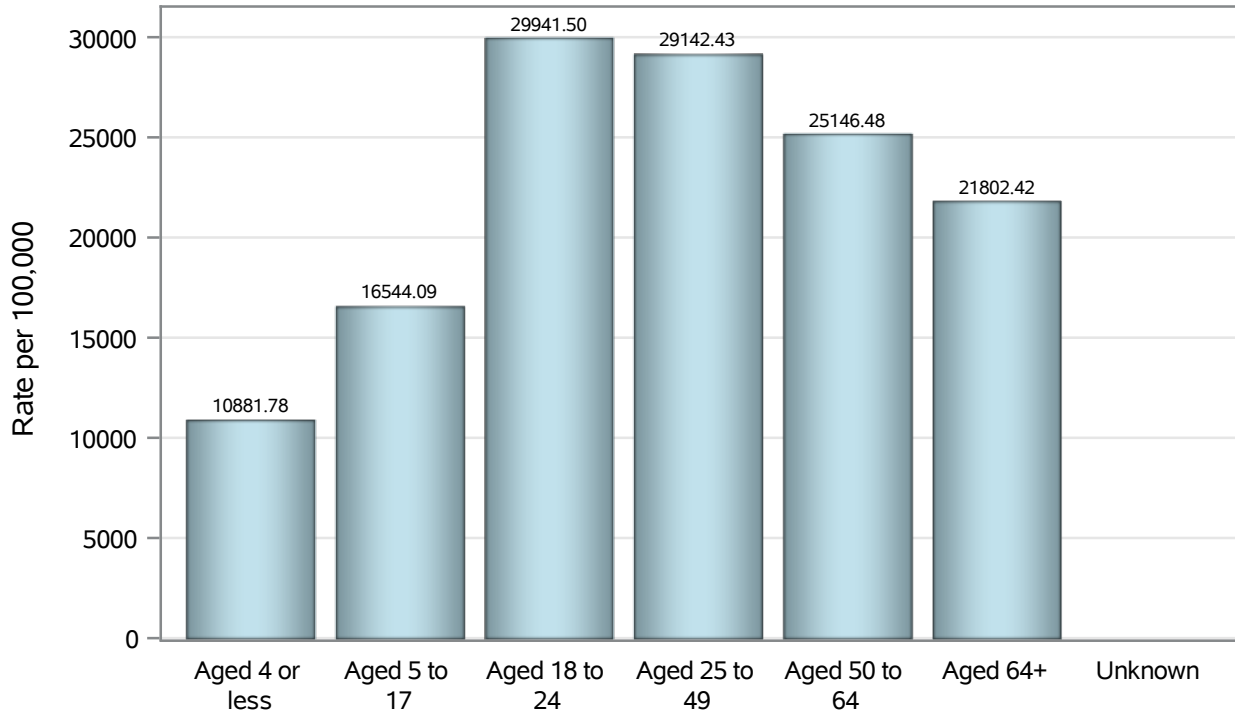
If date of death is missing, then the following is substituted temporarily, in order:
1) Disease onset date 2) Disease diagnosis date
3) Lab result collection date 4) Report date to SNHD.

Investigations are ongoing; data are subject to change.

Reporting through 21MAR2023

Henderson zip codes include 89002, 89011, 89012, 89014, 89015, 89044, 89052, 89074, 89119, 89120, 89122, 89123, 89124, 89183.

Case Age Rates in Henderson

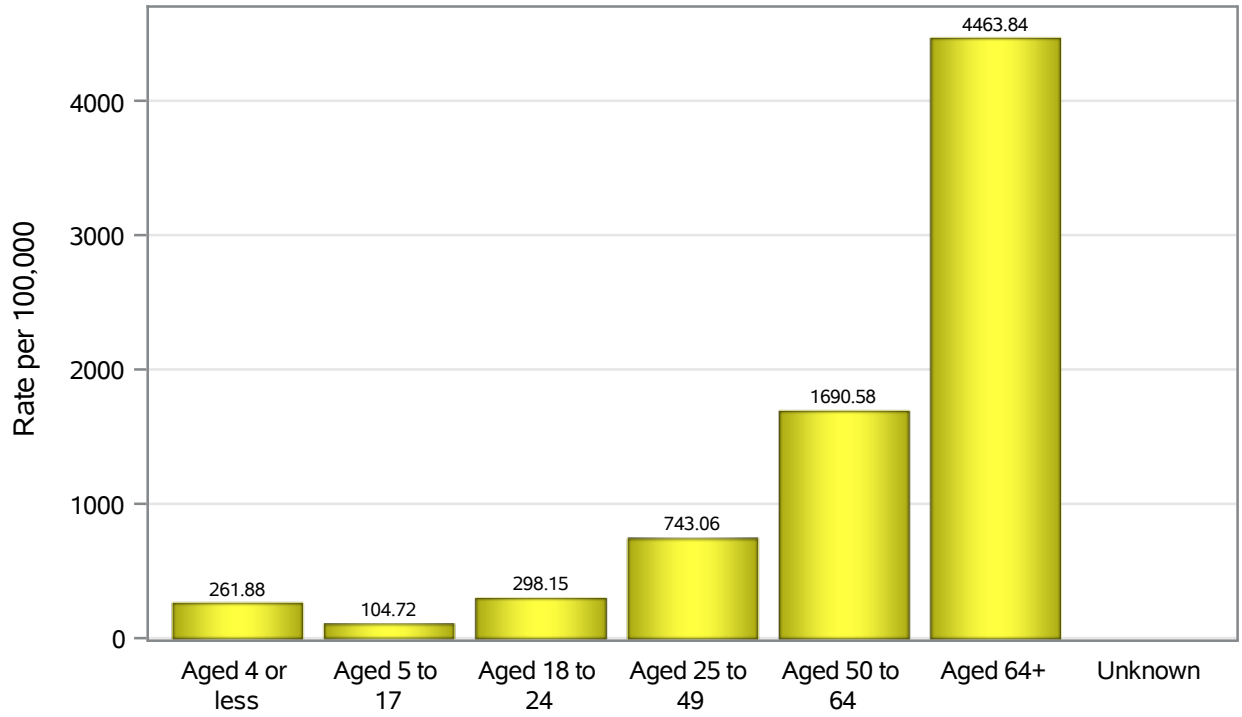


Investigations are ongoing; data are subject to change.

Reporting through 21MAR2023

Henderson zip codes include 89002, 89011, 89012, 89014, 89015, 89044, 89052, 89074, 89119, 89120, 89122, 89123, 89124, 89183.

Hospitalization Age Rates in Henderson

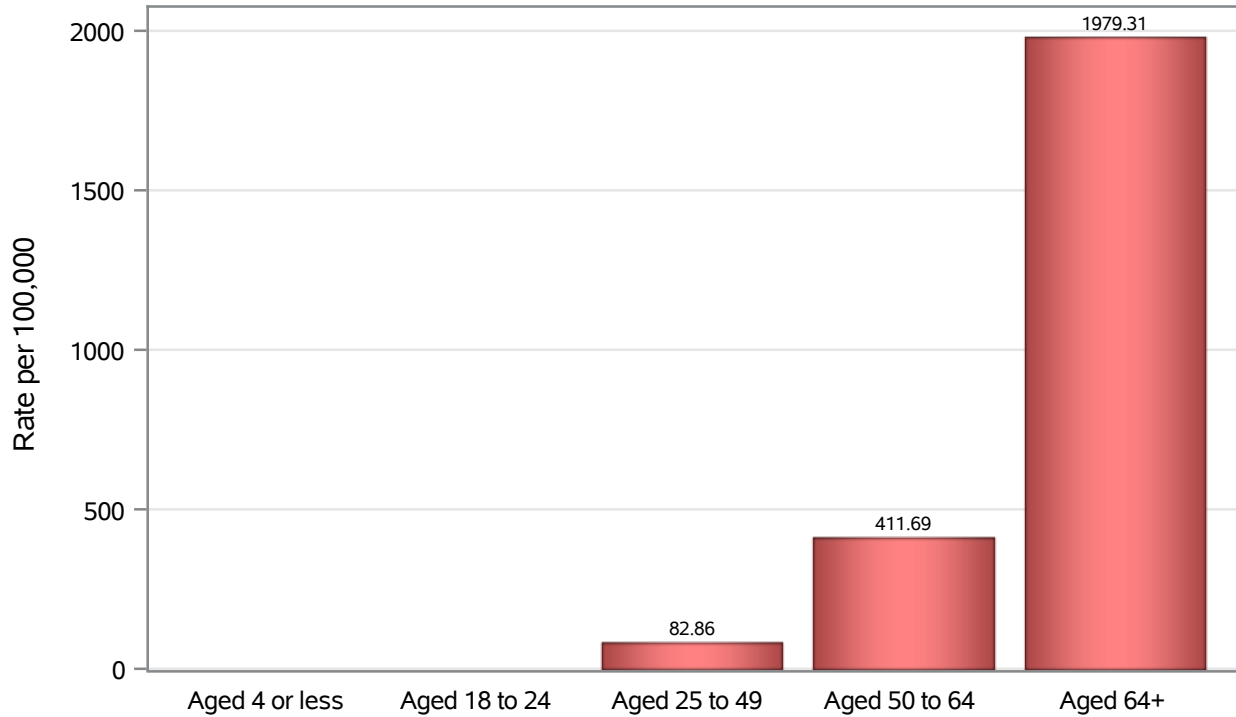


Investigations are ongoing; data are subject to change.

Reporting through 21MAR2023

Henderson zip codes include 89002, 89011, 89012, 89014, 89015, 89044, 89052, 89074, 89119, 89120, 89122, 89123, 89124, 89183.

Death Age Rates in Henderson



Investigations are ongoing; data are subject to change.

Reporting through 21MAR2023

Henderson zip codes include 89002, 89011, 89012, 89014, 89015, 89044, 89052, 89074, 89119, 89120, 89122, 89123, 89124, 89183.

Table 5: Age and COVID19 in Henderson

Case Status	Age Categories	N	%	Population	Rate per 100,000
Cases	Aged 4 or less	3158	2.4	29,021	10882
	Aged 5 to 17	13587	10.5	82,126	16544
	Aged 18 to 24	13256	10.3	44,273	29941
	Aged 25 to 49	54515	42.2	187064	29142
	Aged 50 to 64	25837	20.0	102746	25146
	Aged 64+	18858	14.6	86,495	21802
	Unknown	28	0.0	.	.
Hospitalizations	Aged 4 or less	76	1.0	29,021	261.88
	Aged 5 to 17	86	1.2	82,126	104.72
	Aged 18 to 24	132	1.8	44,273	298.15
	Aged 25 to 49	1390	19.1	187064	743.06
	Aged 50 to 64	1737	23.9	102746	1690.6
	Aged 64+	3861	53.0	86,495	4463.8
	Unknown	1	0.0	.	.
Deaths	Aged 4 or less	1	0.0	29,021	.
	Aged 18 to 24	4	0.2	44,273	.
	Aged 25 to 49	155	6.8	187064	82.86
	Aged 50 to 64	423	18.4	102746	411.69
	Aged 64+	1712	74.6	86,495	1979.3

Note1: Population data source for calculating rate estimates: U.S. Census Bureau, ACS 5-year estimate.

Note2: Rates for categories with fewer than 12 cases are suppressed due to high relative standard error.

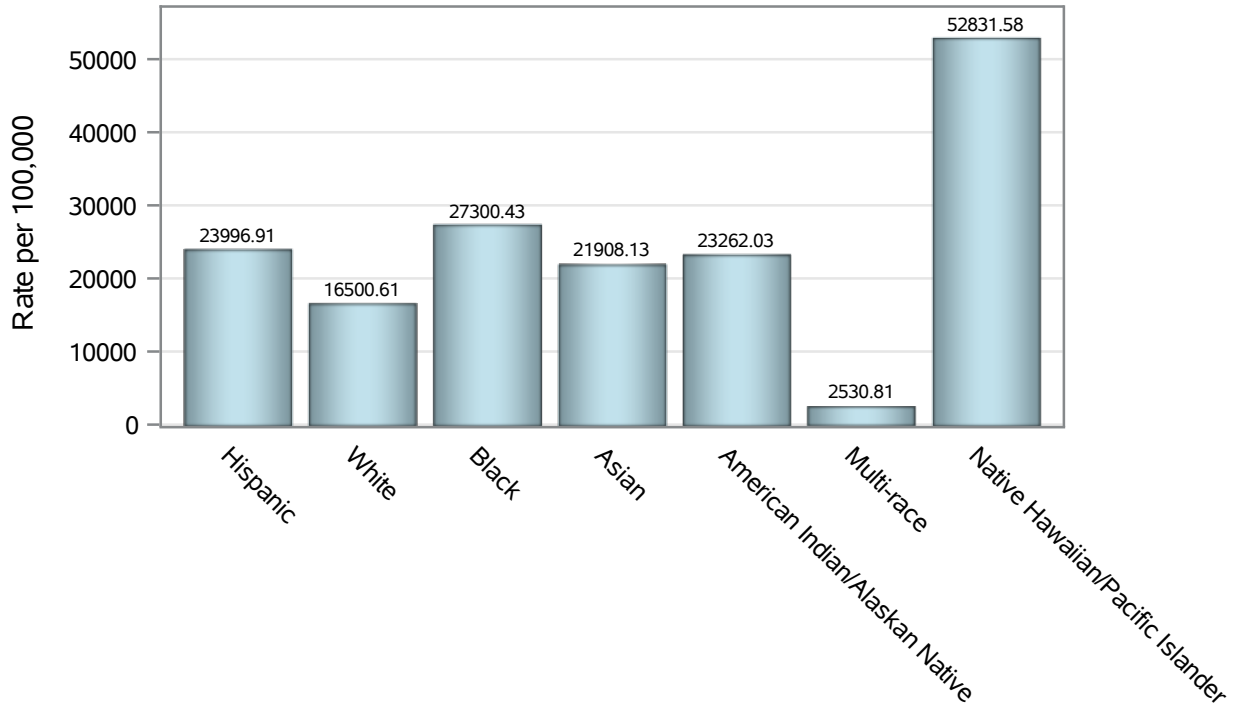
Note3: Hospitalizations are regardless of deceased status; Deaths are regardless of hospitalization status

Investigations are ongoing; data are subject to change.

Reporting through 21MAR2023

Henderson zip codes include 89002, 89011, 89012, 89014, 89015, 89044, 89052, 89074, 89119, 89120, 89122, 89123, 89124, 89183.

Case Race/Ethnicity Rates in Henderson

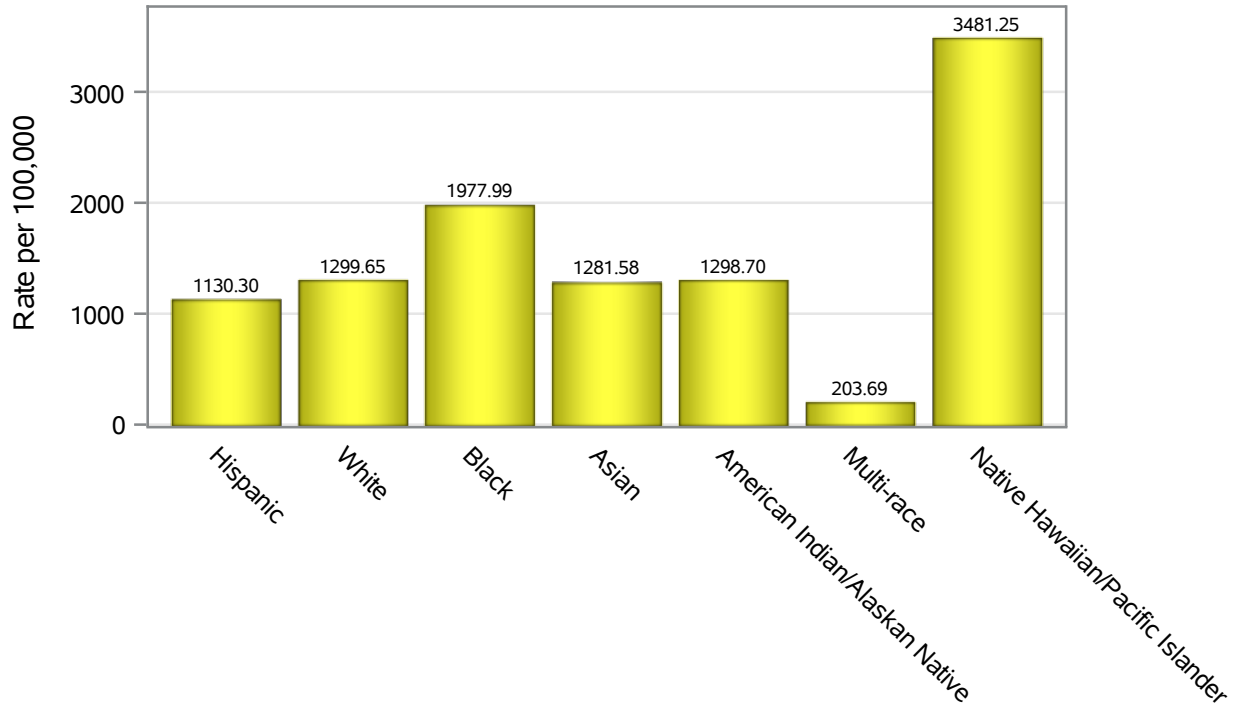


Investigations are ongoing; data are subject to change.

Reporting through 21MAR2023

Henderson zip codes include 89002, 89011, 89012, 89014, 89015, 89044, 89052, 89074, 89119, 89120, 89122, 89123, 89124, 89183.

Hospitalization Race/Ethnicity Rates in Henderson

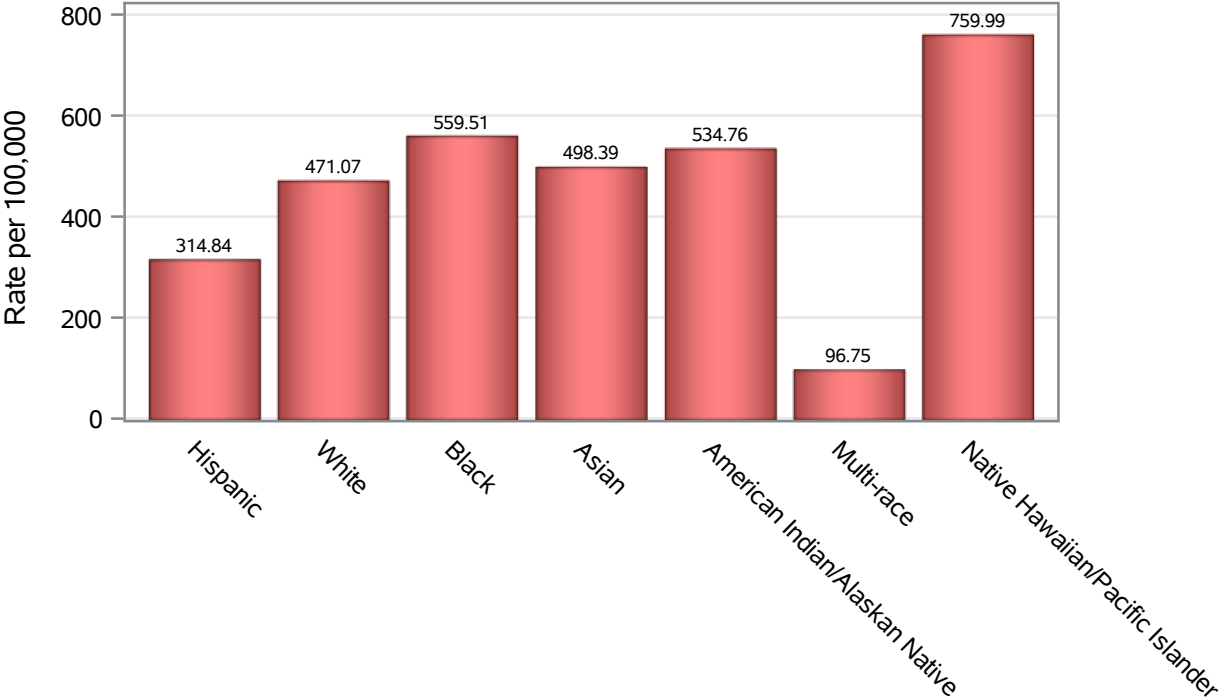


Investigations are ongoing; data are subject to change.

Reporting through 21MAR2023

Henderson zip codes include 89002, 89011, 89012, 89014, 89015, 89044, 89052, 89074, 89119, 89120, 89122, 89123, 89124, 89183.

Death Race/Ethnicity Rates in Henderson



Investigations are ongoing; data are subject to change.

Reporting through 21MAR2023

Henderson zip codes include 89002, 89011, 89012, 89014, 89015, 89044, 89052, 89074, 89119, 89120, 89122, 89123, 89124, 89183.

Table 6: Race/Ethnicity and COVID19 in Henderson

Case Status	Race Ethnicity Categories	N	%	Population	Rate per 100,000
Cases	Hispanic	29192	22.6	121649	23997
	White	48093	37.2	291462	16501
	Black	10393	8.0	38,069	27300
	Asian	11385	8.8	51,967	21908
	American Indian/Alaskan Native	609	0.5	2,618	23262
	Multi-race	497	0.4	19,638	2530.8
	Native Hawaiian/Pacific Islander	2155	1.7	4,079	52832
	Unknown	26915	20.8	.	.
Hospitalizations	Hispanic	1375	18.9	121649	1130.3
	White	3788	52.0	291462	1299.7
	Black	753	10.3	38,069	1978.0
	Asian	666	9.1	51,967	1281.6
	American Indian/Alaskan Native	34	0.5	2,618	1298.7
	Multi-race	40	0.5	19,638	203.69
	Native Hawaiian/Pacific Islander	142	1.9	4,079	3481.2
	Unknown	485	6.7	.	.
Deaths	Hispanic	383	16.7	121649	314.84
	White	1373	59.8	291462	471.07
	Black	213	9.3	38,069	559.51
	Asian	259	11.3	51,967	498.39
	American Indian/Alaskan Native	14	0.6	2,618	534.76
	Multi-race	19	0.8	19,638	96.75
	Native Hawaiian/Pacific Islander	31	1.4	4,079	759.99
	Unknown	3	0.1	.	.

Note1: Population data source for calculating rate estimates: U.S. Census Bureau, ACS 5-year estimate.

Note2: Rates for categories with fewer than 12 cases are suppressed due to high relative standard error.

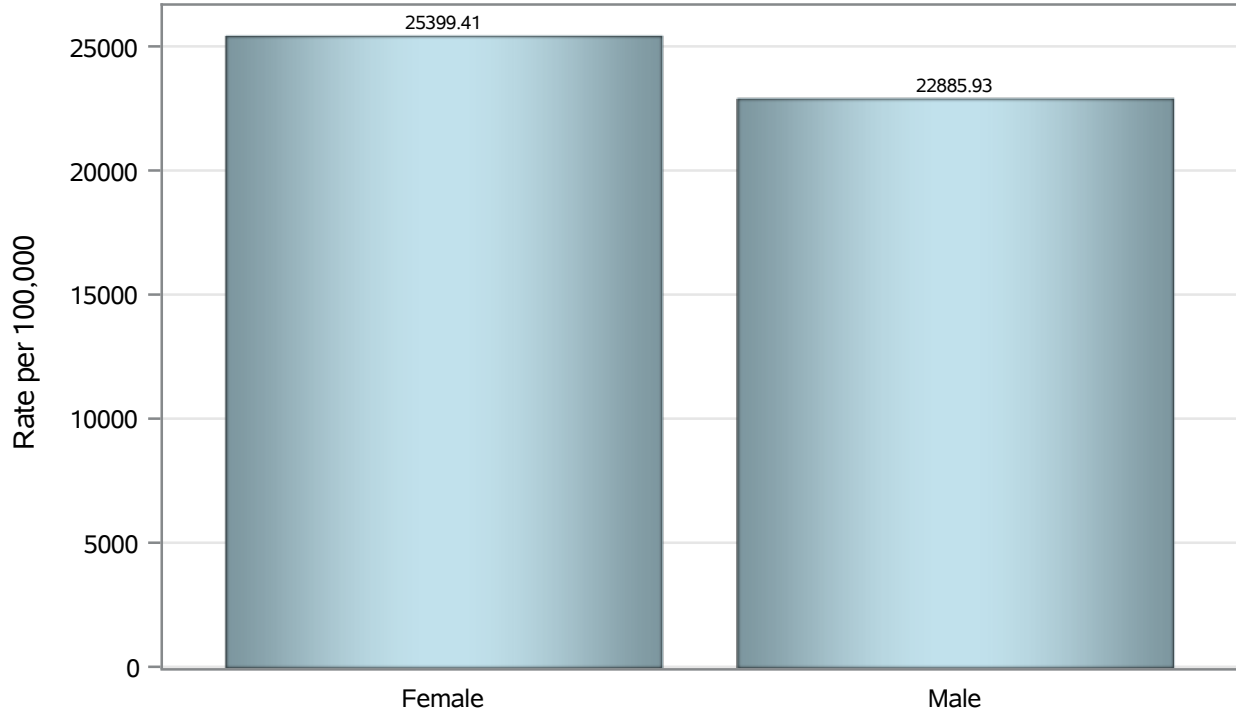
Note3: Hospitalizations are regardless of deceased status; Deaths are regardless of hospitalization status

Investigations are ongoing; data are subject to change.

Reporting through 21MAR2023

Henderson zip codes include 89002, 89011, 89012, 89014, 89015, 89044, 89052, 89074, 89119, 89120, 89122, 89123, 89124, 89183.

Case Birth Sex Rates in Henderson

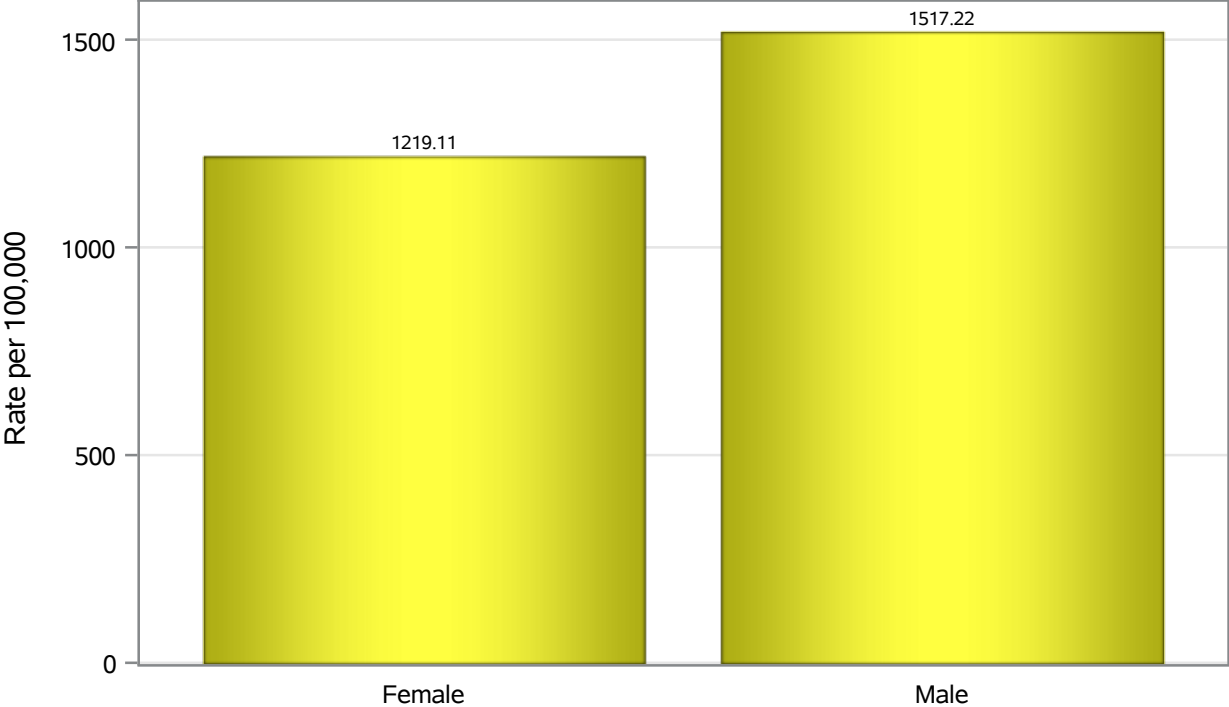


Investigations are ongoing; data are subject to change.

Reporting through 21MAR2023

Henderson zip codes include 89002, 89011, 89012, 89014, 89015, 89044, 89052, 89074, 89119, 89120, 89122, 89123, 89124, 89183.

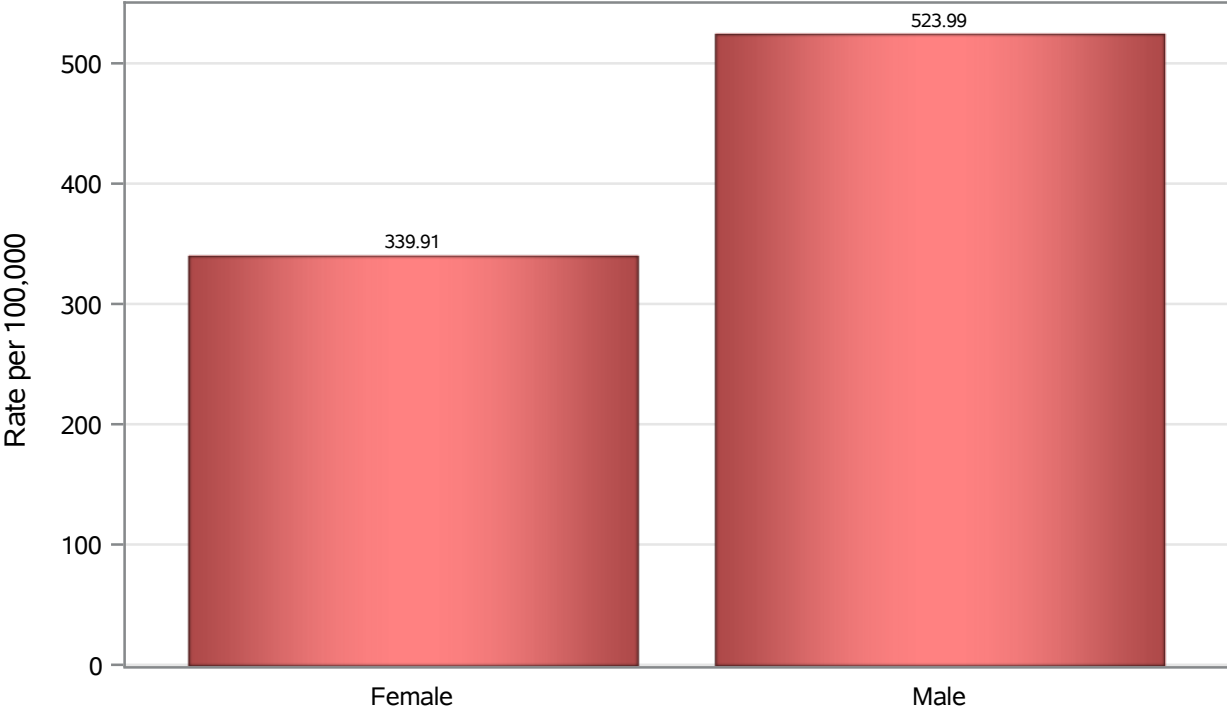
Hospitalization Birth Sex Rates in Henderson



Investigations are ongoing; data are subject to change.
Reporting through 21MAR2023

Henderson zip codes include 89002, 89011, 89012, 89014, 89015, 89044, 89052, 89074, 89119, 89120, 89122, 89123, 89124, 89183.

Death Birth Sex Rates in Henderson



Investigations are ongoing; data are subject to change.
Reporting through 21MAR2023

Henderson zip codes include 89002, 89011, 89012, 89014, 89015, 89044, 89052, 89074,
89119, 89120, 89122, 89123, 89124, 89183.

Table 7: Birth Sex and COVID19 in Henderson

Case Status	Birth Sex Categories	N	%	Population	Rate per 100,000
Cases	Female	67774	52.4	266833	25399
	Male	60623	46.9	264892	22886
	Unknown	842	0.7	.	.
Hospitalizations	Female	3253	44.7	266833	1219.1
	Male	4019	55.2	264892	1517.2
	Unknown	11	0.2	.	.
Deaths	Female	907	39.5	266833	339.91
	Male	1388	60.5	264892	523.99

Note1: Population data source for calculating rate estimates: U.S. Census Bureau, ACS 5-year estimate.

Note2: Rates for categories with fewer than 12 cases are suppressed due to high relative standard error.

Note3: Hospitalizations are regardless of deceased status; Deaths are regardless of hospitalization status

Investigations are ongoing; data are subject to change.

Reporting through 21MAR2023

Henderson zip codes include 89002, 89011, 89012, 89014, 89015, 89044, 89052, 89074, 89119, 89120, 89122, 89123, 89124, 89183.