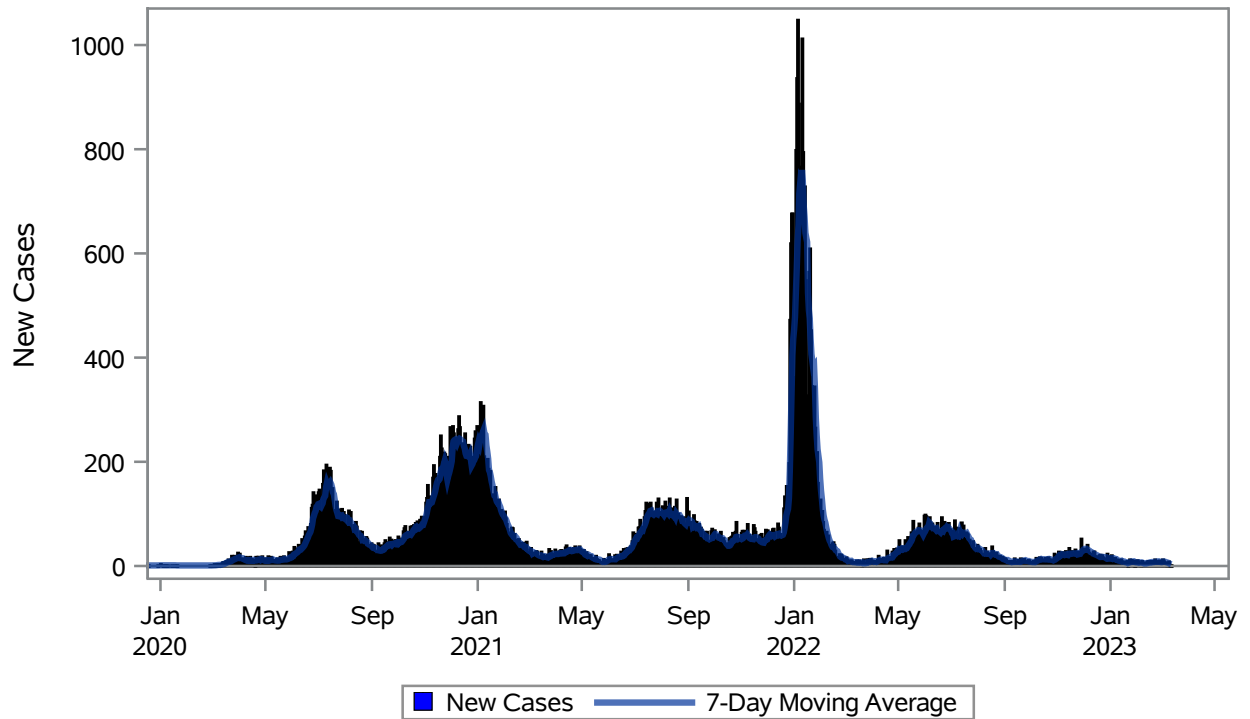


### COVID19 Cases for North Las Vegas, 7-Day Moving Average



Investigations are ongoing; data are subject to change.

Reporting through 13MAR2023

North Las Vegas zip codes include 89030, 89031, 89032, 89033, 89036, 89081, 89084, 89085, 89086, 89087.

**Table 1: New COVID19 Cases and 7-Day Moving Average in North Las Vegas, Previous Two Weeks**

Date (Daily)	New Cases	7-Day Moving Average
28FEB2023	7	7.57
01MAR2023	8	7.43
02MAR2023	12	8.14
03MAR2023	10	8.57
04MAR2023	7	8.57
05MAR2023	6	8.00
06MAR2023	3	7.57
07MAR2023	2	6.86
08MAR2023	5	6.43
09MAR2023	8	5.86
10MAR2023	2	4.71
11MAR2023	1	3.86

---

Note1: Event Date is calculated as follows based on completed information:

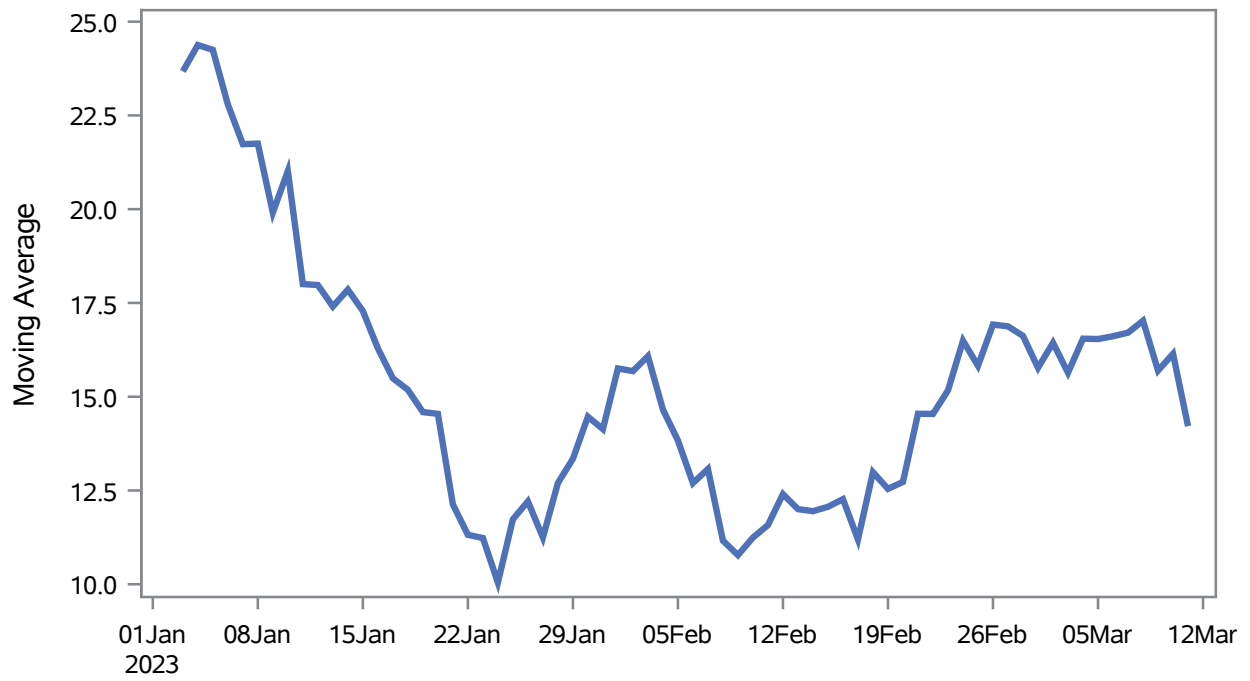
1) Disease onset date 2) Disease diagnosis date 3) Lab result collection date 4) Report date to SNHD.

---

**Investigations are ongoing; data are subject to change.  
Reporting through 13MAR2023**

**North Las Vegas zip codes include 89030, 89031, 89032, 89033, 89036, 89081, 89084, 89085, 89086, 89087.**

### Percent of People Receiving COVID-19 Viral Tests Who Have Positive Results in North Las Vegas



Investigations are ongoing; data are subject to change.

Reporting through 13MAR2023

North Las Vegas zip codes include 89030, 89031, 89032, 89033, 89036, 89081, 89084, 89085, 89086, 89087.

**Table 2: Percent of People Receiving COVID-19 Viral Tests Who Have Positive Results in North Las Vegas**

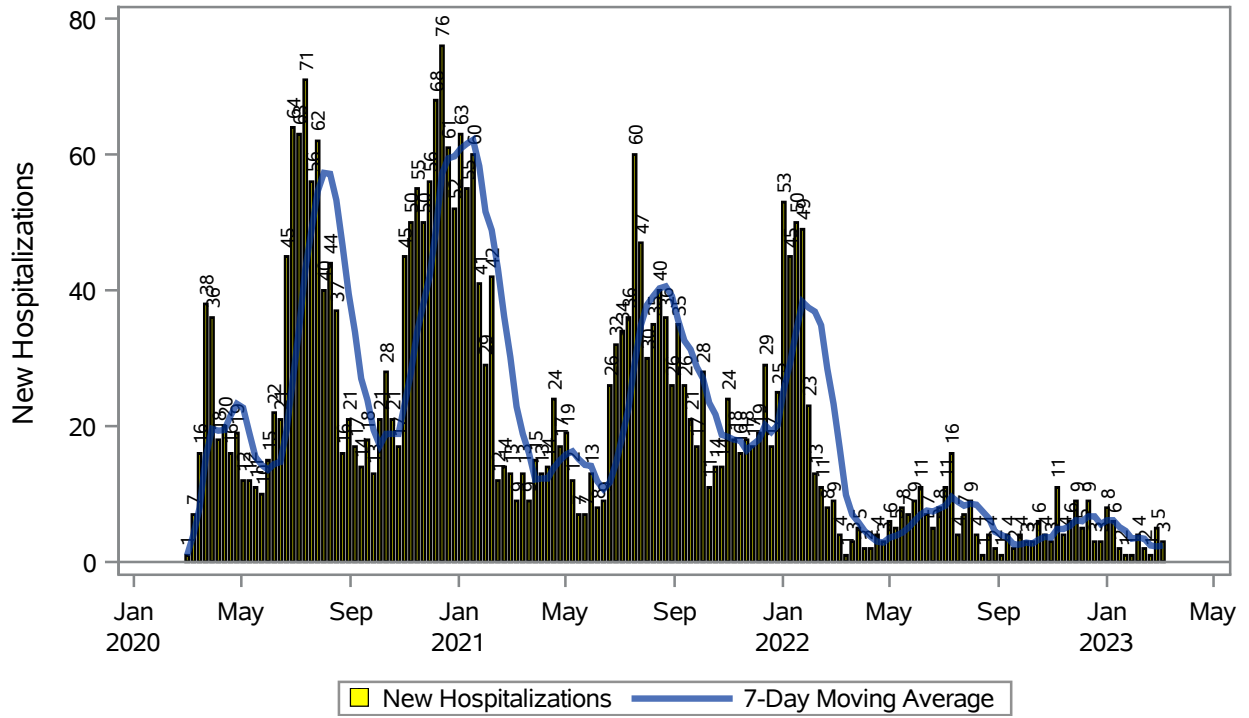
Collection Date	Positive	Negative	Equivocal	Total	% Positivity	7-Day Moving Average
25FEB2023	11	45		56	19.64	15.8
26FEB2023	13	55		68	19.12	16.9
27FEB2023	17	168		185	9.19	16.9
28FEB2023	16	68		84	19.05	16.6
01MAR2023	11	90		101	10.89	15.8
02MAR2023	22	68		90	24.44	16.4
03MAR2023	10	130		140	7.14	15.6
04MAR2023	13	37		50	26.00	16.5
05MAR2023	12	51		63	19.05	16.5
06MAR2023	10	93		103	9.71	16.6
07MAR2023	14	57		71	19.72	16.7
08MAR2023	8	53		61	13.11	17.0
09MAR2023	10	56		66	15.15	15.7
10MAR2023	4	35		39	10.26	16.1
11MAR2023	3	21		24	12.50	14.2

Note: Testing Data includes a 3 day delay

**Investigations are ongoing; data are subject to change.  
Reporting through 13MAR2023**

**North Las Vegas zip codes include 89030, 89031, 89032, 89033, 89036, 89081, 89084, 89085, 89086, 89087.**

### COVID19 Hospitalizations for North Las Vegas, 7-Day Moving Average



Investigations are ongoing; data are subject to change.

Reporting through 13MAR2023

North Las Vegas zip codes include 89030, 89031, 89032, 89033, 89036, 89081, 89084, 89085, 89086, 89087.

**Table 3: New COVID19-Related Hospitalizations and 7-Day Moving Average in North Las Vegas, previous month**

Week	Hospitalizations	7-Day Moving Average
12FEB2023	2	3.43
19FEB2023	1	2.43
26FEB2023	5	2.29
05MAR2023	3	2.43

---

Note1: Admission Date is calculated as follows based on completed information:  
A) COVID19 Case is hospitalized B) COVID19 Case has a hospital admission date.

If admission date is missing, then the following is substituted temporarily, in order:  
1) Disease onset date 2) Disease diagnosis date 3) Lab result collection date 4) Report date to SNHD.

---

**Investigations are ongoing; data are subject to change.  
Reporting through 13MAR2023**

**North Las Vegas zip codes include 89030, 89031, 89032, 89033, 89036, 89081, 89084, 89085, 89086, 89087.**

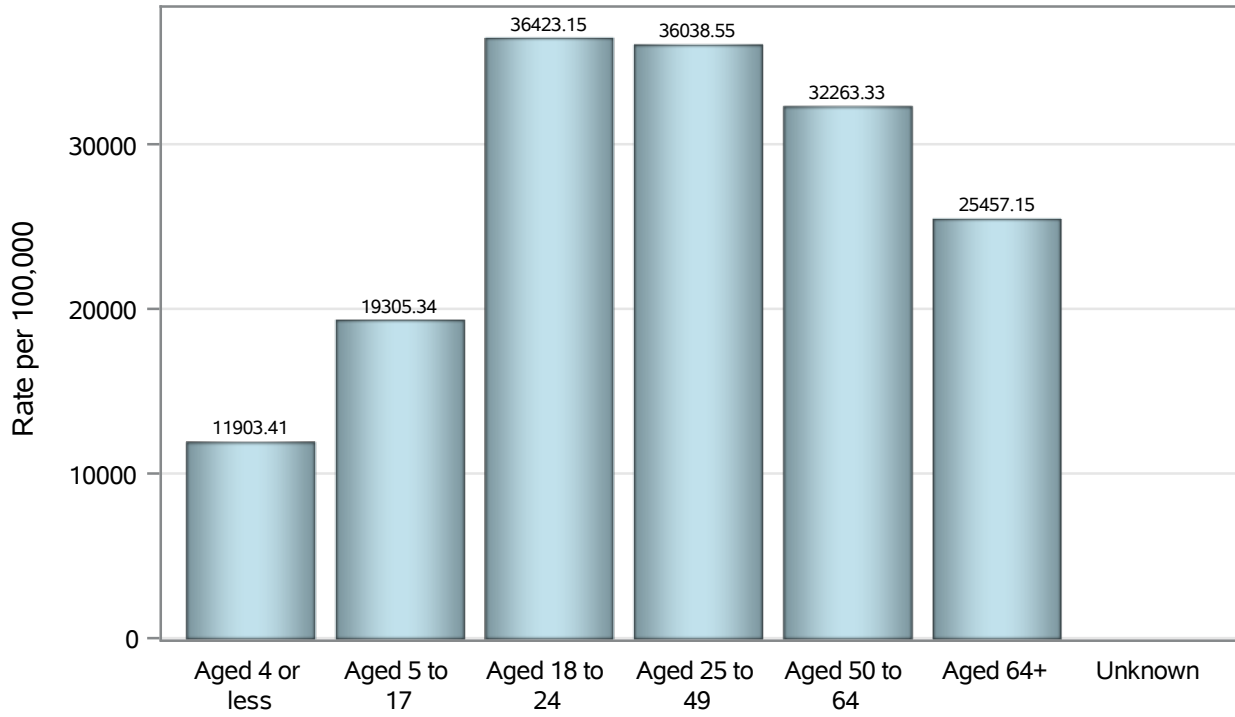
### COVID19 Deaths for North Las Vegas, 7-Day Moving Average



Investigations are ongoing; data are subject to change.  
Reporting through 13MAR2023

North Las Vegas zip codes include 89030, 89031, 89032, 89033, 89036, 89081, 89084, 89085, 89086, 89087.

### Case Age Rates in North Las Vegas



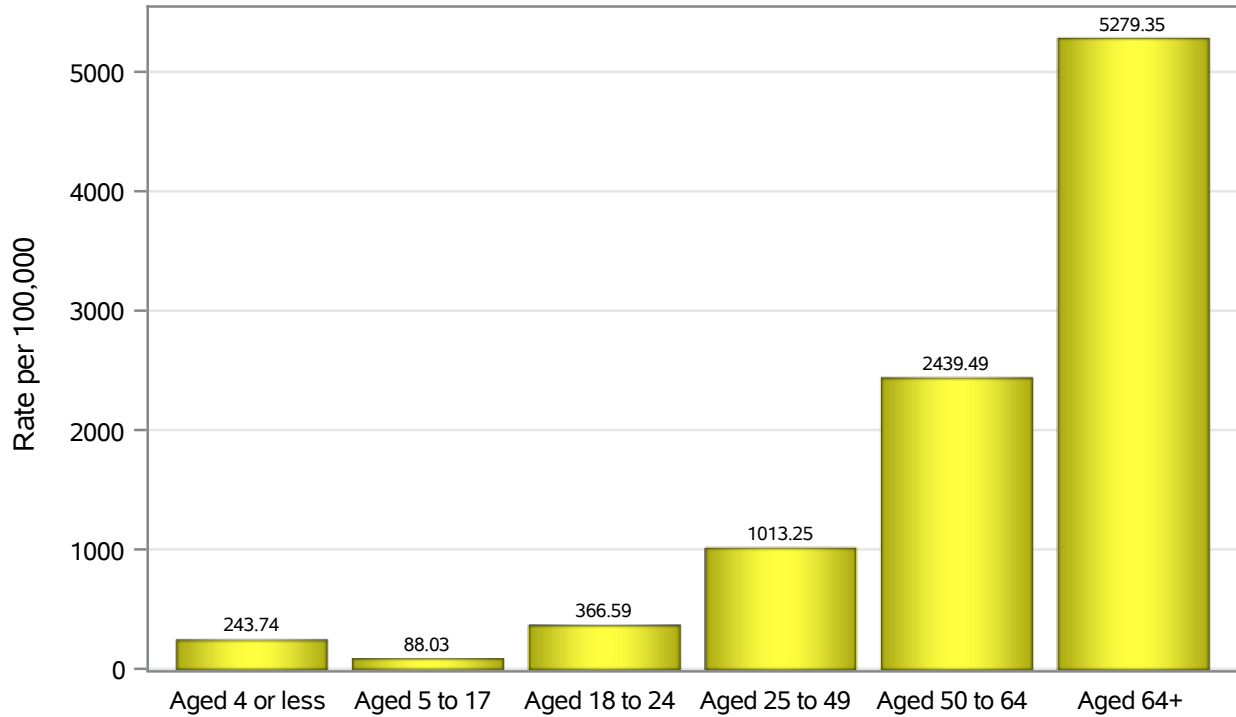
Investigations are ongoing; data are subject to change.

Reporting through 13MAR2023

North Las Vegas zip codes include 89030, 89031, 89032, 89033, 89036, 89081, 89084, 89085, 89086, 89087.



### Hospitalization Age Rates in North Las Vegas

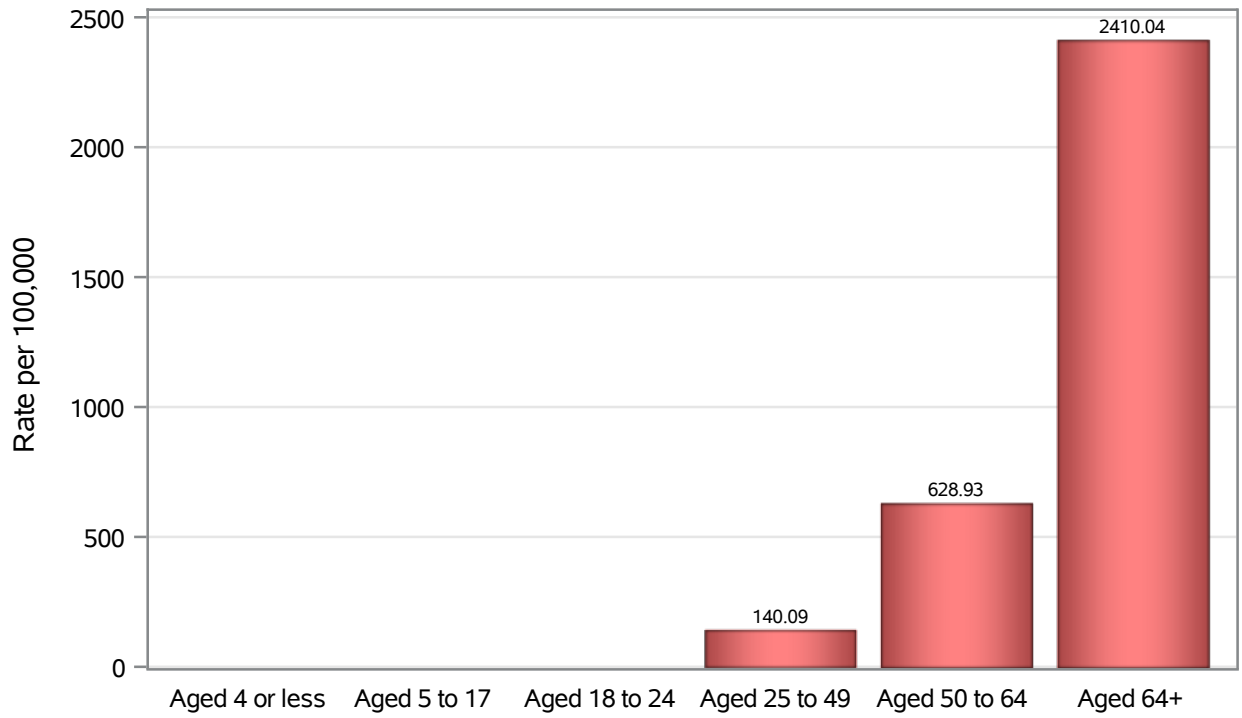


Investigations are ongoing; data are subject to change.

Reporting through 13MAR2023

North Las Vegas zip codes include 89030, 89031, 89032, 89033, 89036, 89081, 89084, 89085, 89086, 89087.

### Death Age Rates in North Las Vegas



Investigations are ongoing; data are subject to change.

Reporting through 13MAR2023

North Las Vegas zip codes include 89030, 89031, 89032, 89033, 89036, 89081, 89084, 89085, 89086, 89087.

**Table 5: Age and COVID19 in North Las Vegas**

Case Status	Age Categories	N	%	Population	Rate per 100,000
Cases	Aged 4 or less	2100	3.1	17,642	11903
	Aged 5 to 17	9649	14.2	49,981	19305
	Aged 18 to 24	8346	12.3	22,914	36423
	Aged 25 to 49	29841	44.0	82,803	36039
	Aged 50 to 64	11850	17.5	36,729	32263
	Aged 64+	6042	8.9	23,734	25457
	Unknown	15	0.0	.	.
Hospitalizations	Aged 4 or less	43	1.4	17,642	243.74
	Aged 5 to 17	44	1.4	49,981	88.03
	Aged 18 to 24	84	2.7	22,914	366.59
	Aged 25 to 49	839	26.6	82,803	1013.2
	Aged 50 to 64	896	28.4	36,729	2439.5
	Aged 64+	1253	39.7	23,734	5279.3
	Deaths	Aged 4 or less	3	0.3	17,642
Aged 5 to 17		1	0.1	49,981	.
Aged 18 to 24		2	0.2	22,914	.
Aged 25 to 49		116	12.5	82,803	140.09
Aged 50 to 64		231	25.0	36,729	628.93
Aged 64+		572	61.8	23,734	2410.0

Note1: Population data source for calculating rate estimates: U.S. Census Bureau, ACS 5-year estimate.

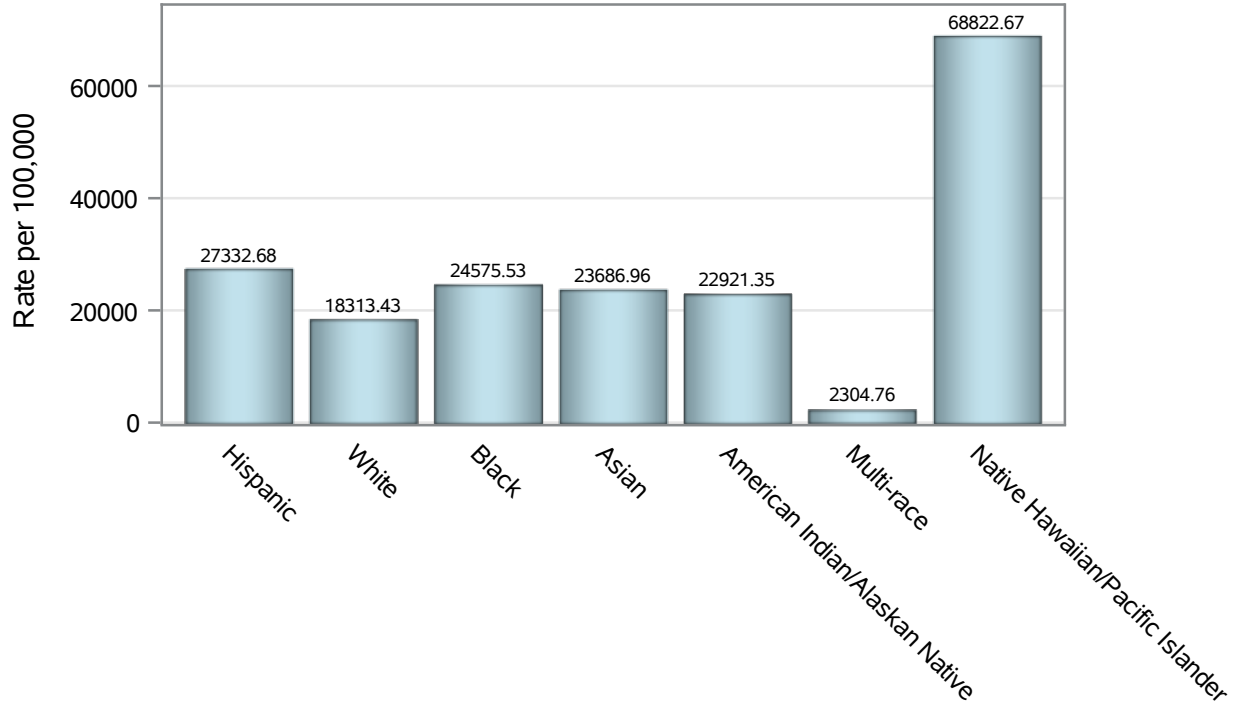
Note2: Rates for categories with fewer than 12 cases are suppressed due to high relative standard error.

Note3: Hospitalizations are regardless of deceased status; Deaths are regardless of hospitalization status

**Investigations are ongoing; data are subject to change.  
Reporting through 13MAR2023**

**North Las Vegas zip codes include 89030, 89031, 89032, 89033, 89036, 89081, 89084, 89085, 89086, 89087.**

### Case Race/Ethnicity Rates in North Las Vegas

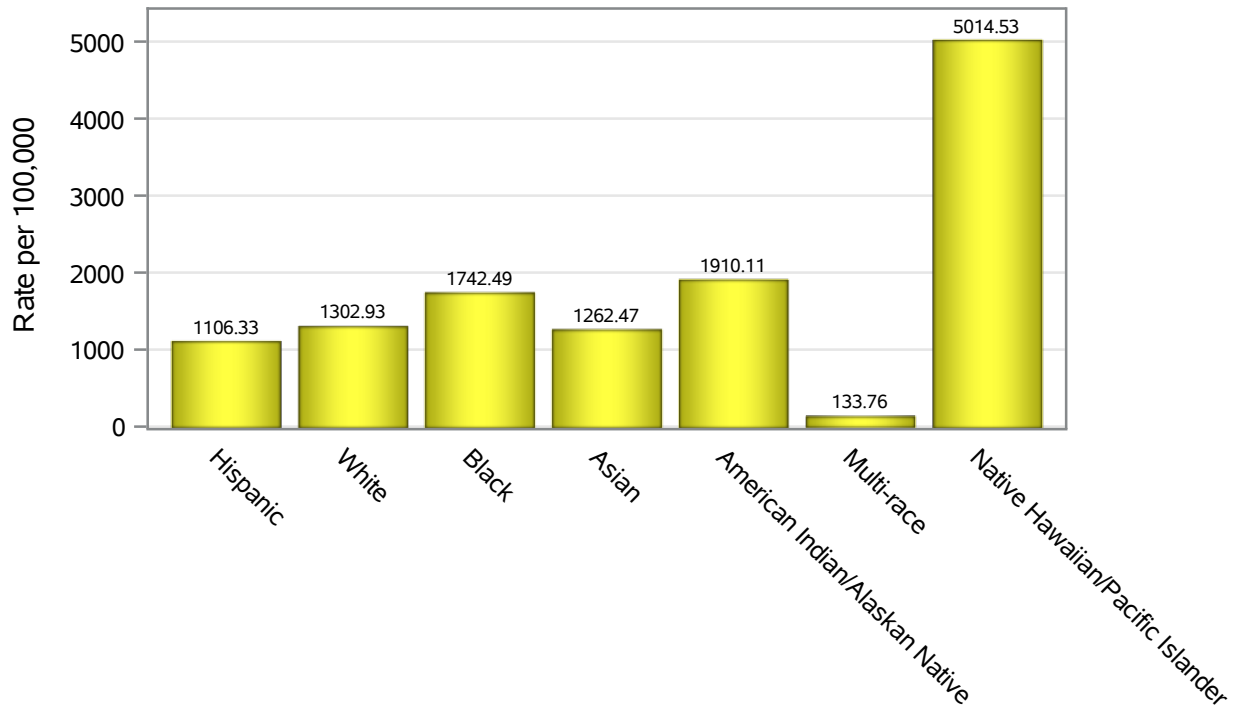


Investigations are ongoing; data are subject to change.

Reporting through 13MAR2023

North Las Vegas zip codes include 89030, 89031, 89032, 89033, 89036, 89081, 89084, 89085, 89086, 89087.

### Hospitalization Race/Ethnicity Rates in North Las Vegas

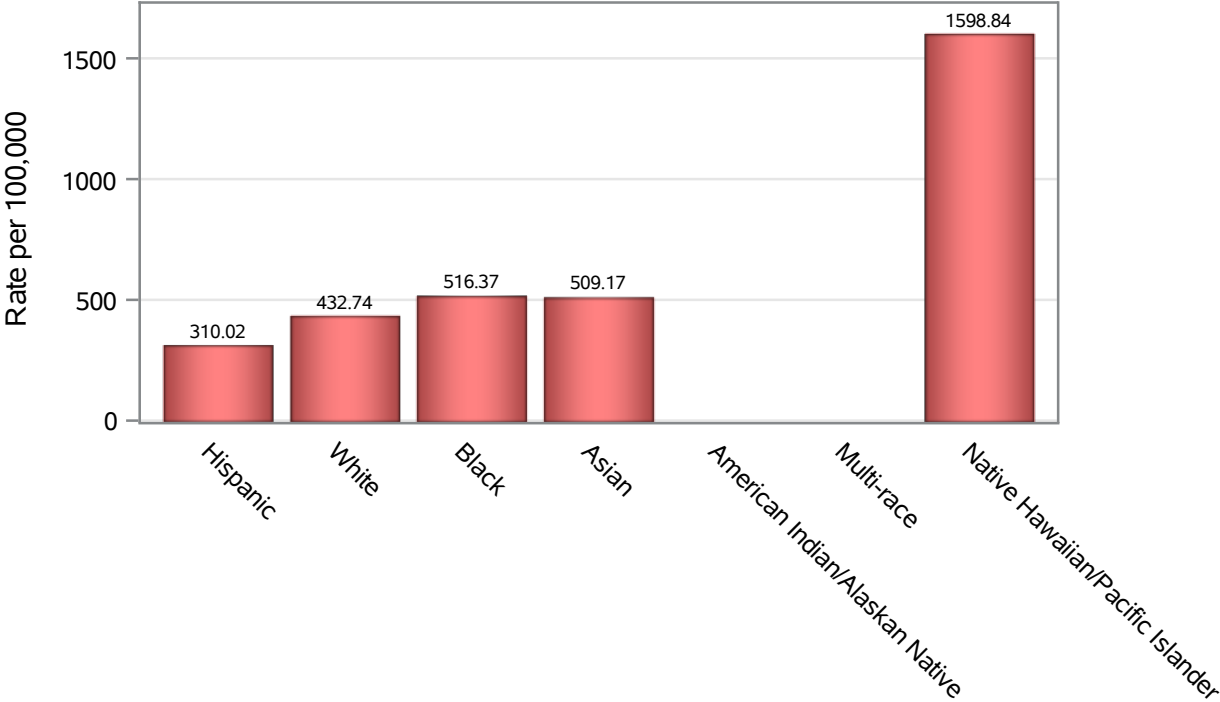


Investigations are ongoing; data are subject to change.

Reporting through 13MAR2023

North Las Vegas zip codes include 89030, 89031, 89032, 89033, 89036, 89081, 89084, 89085, 89086, 89087.

### Death Race/Ethnicity Rates in North Las Vegas



Investigations are ongoing; data are subject to change.

Reporting through 13MAR2023

North Las Vegas zip codes include 89030, 89031, 89032, 89033, 89036, 89081, 89084, 89085, 89086, 89087.

**Table 6: Race/Ethnicity and COVID19 in North Las Vegas**

Case Status	Race Ethnicity Categories	N	%	Population	Rate per 100,000
Cases	Hispanic	26361	38.9	96,445	27333
	White	11638	17.2	63,549	18313
	Black	11565	17.0	47,059	24576
	Asian	3396	5.0	14,337	23687
	American Indian/Alaskan Native	204	0.3	890	22921
	Multi-race	224	0.3	9,719	2304.8
	Native Hawaiian/Pacific Islander	947	1.4	1,376	68823
	Unknown	13508	19.9	.	.
Hospitalizations	Hispanic	1067	33.8	96,445	1106.3
	White	828	26.2	63,549	1302.9
	Black	820	26.0	47,059	1742.5
	Asian	181	5.7	14,337	1262.5
	American Indian/Alaskan Native	17	0.5	890	1910.1
	Multi-race	13	0.4	9,719	133.76
	Native Hawaiian/Pacific Islander	69	2.2	1,376	5014.5
	Unknown	164	5.2	.	.
Deaths	Hispanic	299	32.3	96,445	310.02
	White	275	29.7	63,549	432.74
	Black	243	26.3	47,059	516.37
	Asian	73	7.9	14,337	509.17
	American Indian/Alaskan Native	6	0.6	890	.
	Multi-race	7	0.8	9,719	.
	Native Hawaiian/Pacific Islander	22	2.4	1,376	1598.8

Note1: Population data source for calculating rate estimates: U.S. Census Bureau, ACS 5-year estimate.

Note2: Rates for categories with fewer than 12 cases are suppressed due to high relative standard error.

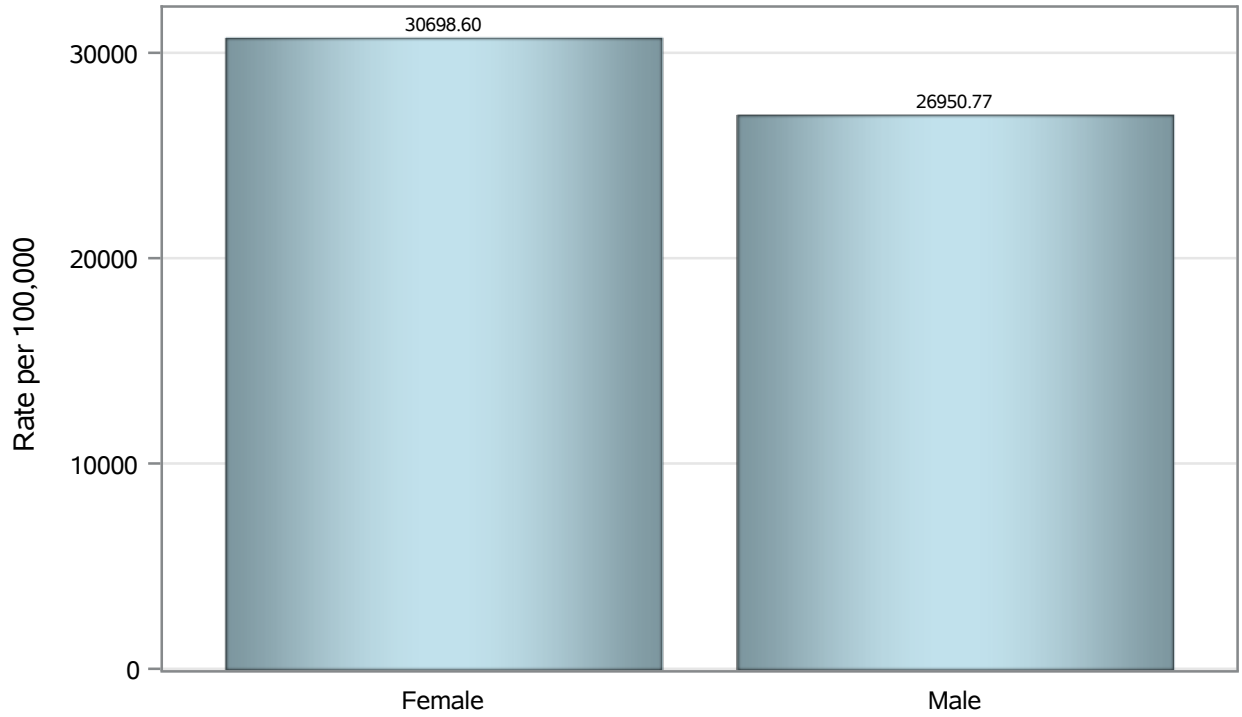
Note3: Hospitalizations are regardless of deceased status; Deaths are regardless of hospitalization status

**Investigations are ongoing; data are subject to change.**

**Reporting through 13MAR2023**

**North Las Vegas zip codes include 89030, 89031, 89032, 89033, 89036, 89081, 89084, 89085, 89086, 89087.**

### Case Birth Sex Rates in North Las Vegas



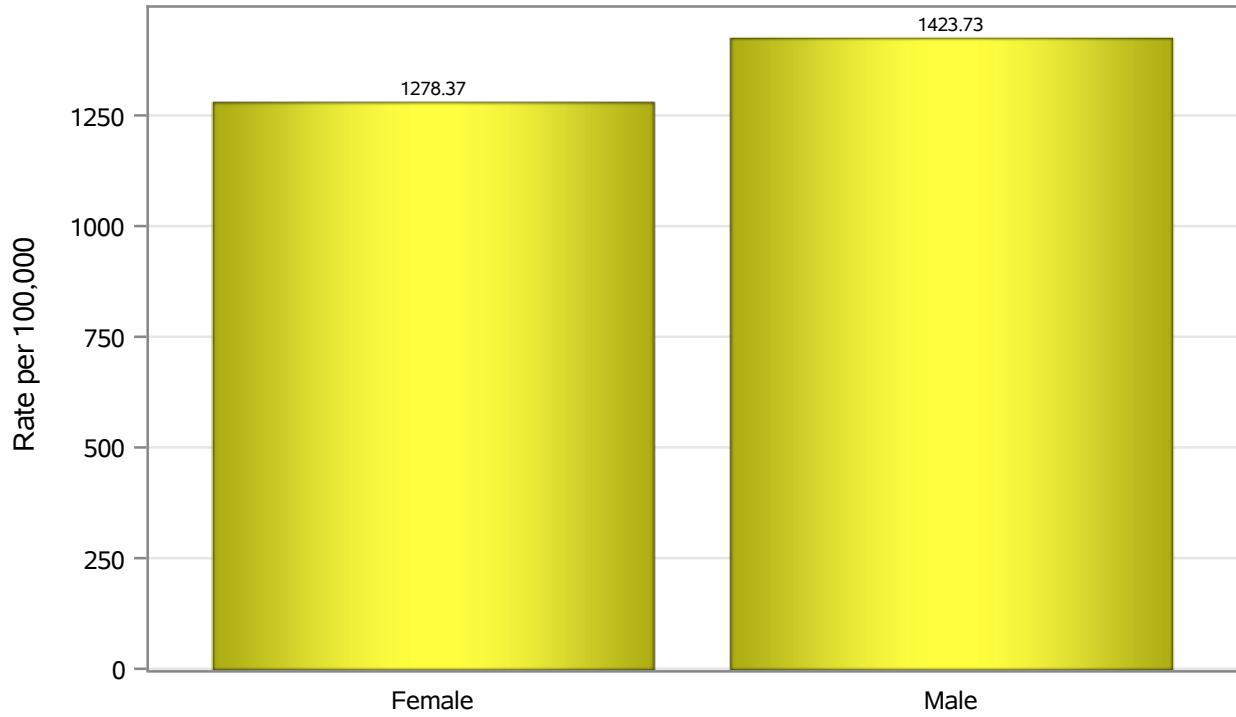
Investigations are ongoing; data are subject to change.

Reporting through 13MAR2023

North Las Vegas zip codes include 89030, 89031, 89032, 89033, 89036, 89081, 89084, 89085, 89086, 89087.



### Hospitalization Birth Sex Rates in North Las Vegas

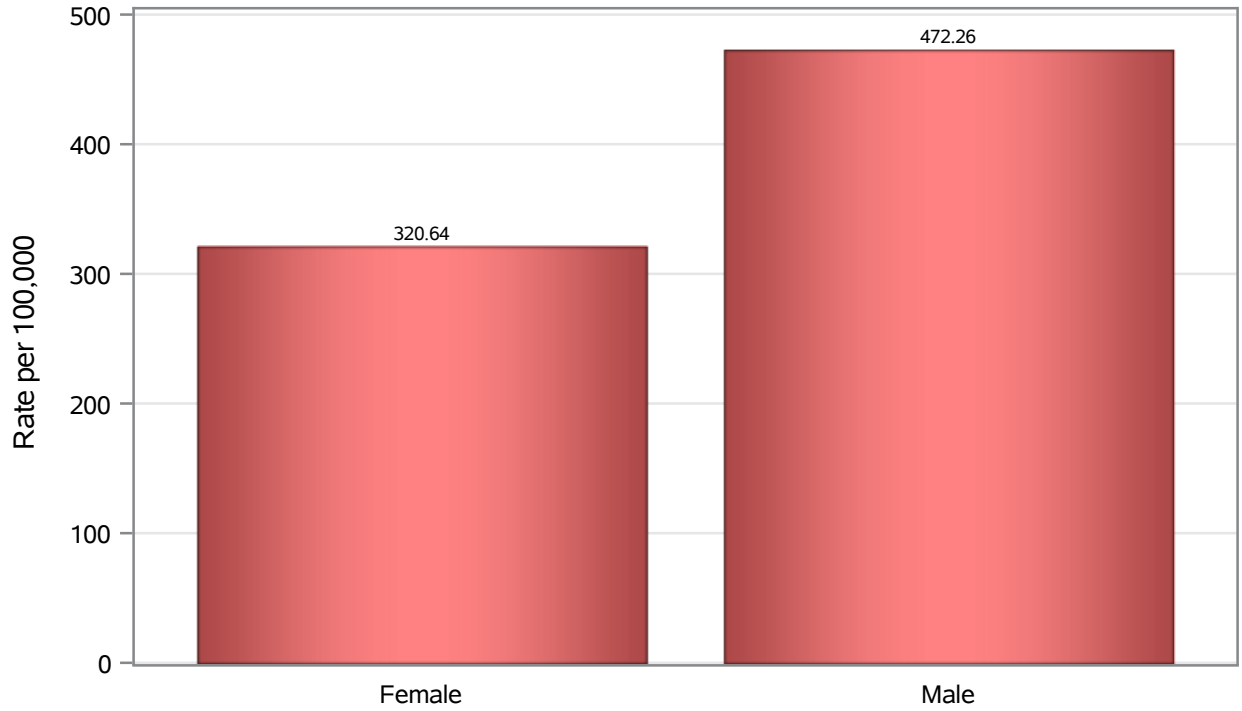


Investigations are ongoing; data are subject to change.

Reporting through 13MAR2023

North Las Vegas zip codes include 89030, 89031, 89032, 89033, 89036, 89081, 89084, 89085, 89086, 89087.

### Death Birth Sex Rates in North Las Vegas



Investigations are ongoing; data are subject to change.

Reporting through 13MAR2023

North Las Vegas zip codes include 89030, 89031, 89032, 89033, 89036, 89081, 89084, 89085, 89086, 89087.

**Table 7: Birth Sex and COVID19 in North Las Vegas**

Case Status	Birth Sex Categories	N	%	Population	Rate per 100,000
Cases	Female	36477	53.8	118823	30699
	Male	30988	45.7	114980	26951
	Unknown	378	0.6	.	.
Hospitalizations	Female	1519	48.1	118823	1278.4
	Male	1637	51.8	114980	1423.7
	Unknown	3	0.1	.	.
Deaths	Female	381	41.2	118823	320.64
	Male	543	58.7	114980	472.26
	Unknown	1	0.1	.	.

Note1: Population data source for calculating rate estimates: U.S. Census Bureau, ACS 5-year estimate.

Note2: Rates for categories with fewer than 12 cases are suppressed due to high relative standard error.

Note3: Hospitalizations are regardless of deceased status; Deaths are regardless of hospitalization status

**Investigations are ongoing; data are subject to change.  
Reporting through 13MAR2023**

**North Las Vegas zip codes include 89030, 89031, 89032, 89033, 89036, 89081, 89084, 89085, 89086, 89087.**