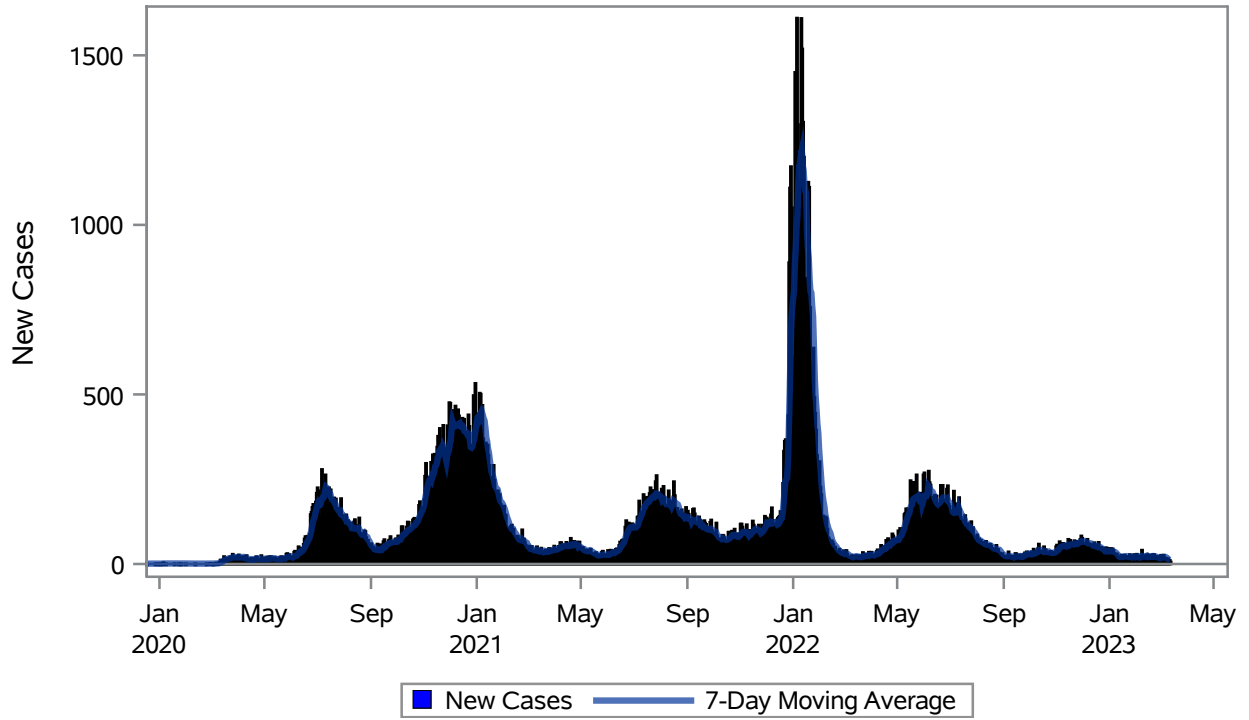


COVID19 Cases for Henderson, 7-Day Moving Average



Investigations are ongoing; data are subject to change.

Reporting through 13MAR2023

Henderson zip codes include 89002, 89011, 89012, 89014, 89015, 89044, 89052, 89074, 89119, 89120, 89122, 89123, 89124, 89183.

Table 1: New COVID19 Cases and 7-Day Moving Average in Henderson, Previous Two Weeks

Date (Daily)	New Cases	7-Day Moving Average
28FEB2023	22	17.14
01MAR2023	26	18.86
02MAR2023	21	19.43
03MAR2023	22	19.29
04MAR2023	26	21.00
05MAR2023	12	21.00
06MAR2023	18	21.00
07MAR2023	15	20.00
08MAR2023	7	17.29
09MAR2023	16	16.57
10MAR2023	4	14.00
11MAR2023	11	11.86

Note1: Event Date is calculated as follows based on completed information:

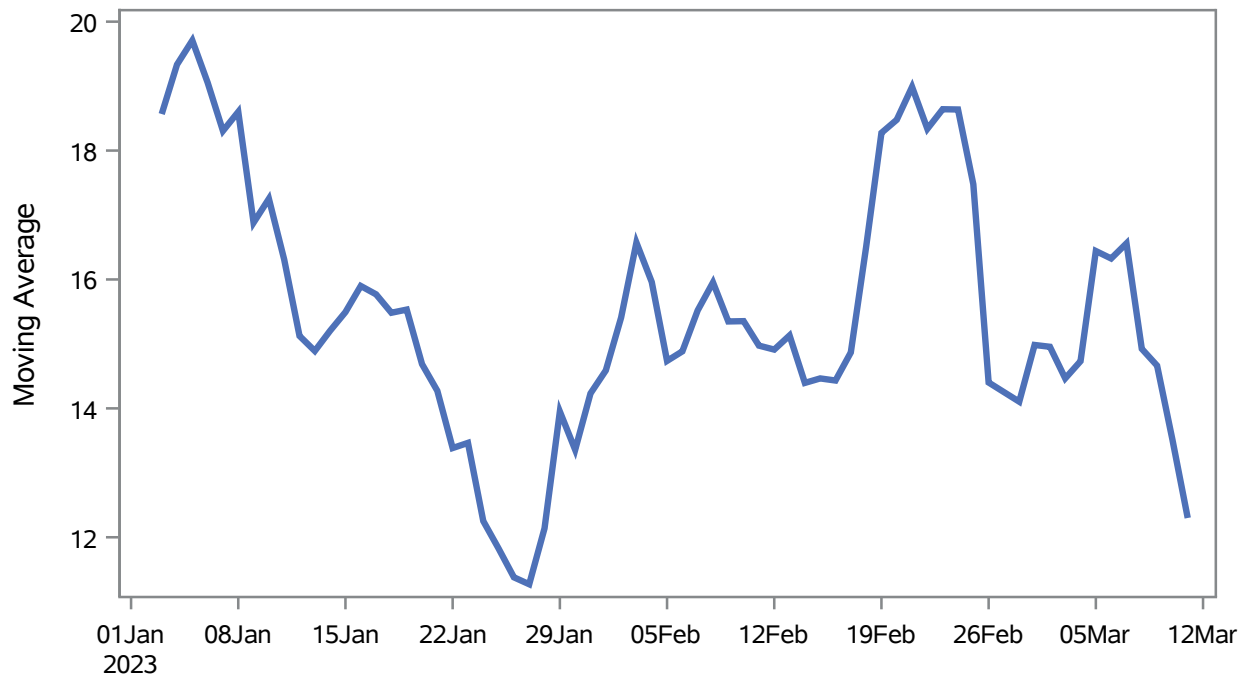
1) Disease onset date 2) Disease diagnosis date 3) Lab result collection date 4) Report date to SNHD.

Investigations are ongoing; data are subject to change.

Reporting through 13MAR2023

Henderson zip codes include 89002, 89011, 89012, 89014, 89015, 89044, 89052, 89074, 89119, 89120, 89122, 89123, 89124, 89183.

Percent of People Receiving COVID-19 Viral Tests Who Have Positive Results in Henderson



Investigations are ongoing; data are subject to change.

Reporting through 13MAR2023

Henderson zip codes include 89002, 89011, 89012, 89014, 89015, 89044, 89052, 89074, 89119, 89120, 89122, 89123, 89124, 89183.

Table 2: Percent of People Receiving COVID-19 Viral Tests Who Have Positive Results in Henderson

Collection Date	Positive	Negative	Equivocal	Total	% Positivity	7-Day Moving Average
25FEB2023	16	90		106	15.09	17.5
26FEB2023	6	85		91	6.59	14.4
27FEB2023	25	150		175	14.29	14.3
28FEB2023	29	139		168	17.26	14.1
01MAR2023	25	109		134	18.66	15.0
02MAR2023	18	117		135	13.33	15.0
03MAR2023	21	110		131	16.03	14.5
04MAR2023	19	93		112	16.96	14.7
05MAR2023	18	79		97	18.56	16.4
06MAR2023	19	121	1	141	13.48	16.3
07MAR2023	31	133		164	18.90	16.6
08MAR2023	8	103		111	7.21	14.9
09MAR2023	13	100		113	11.50	14.7
10MAR2023	4	46		50	8.00	13.5
11MAR2023	6	65		71	8.45	12.3

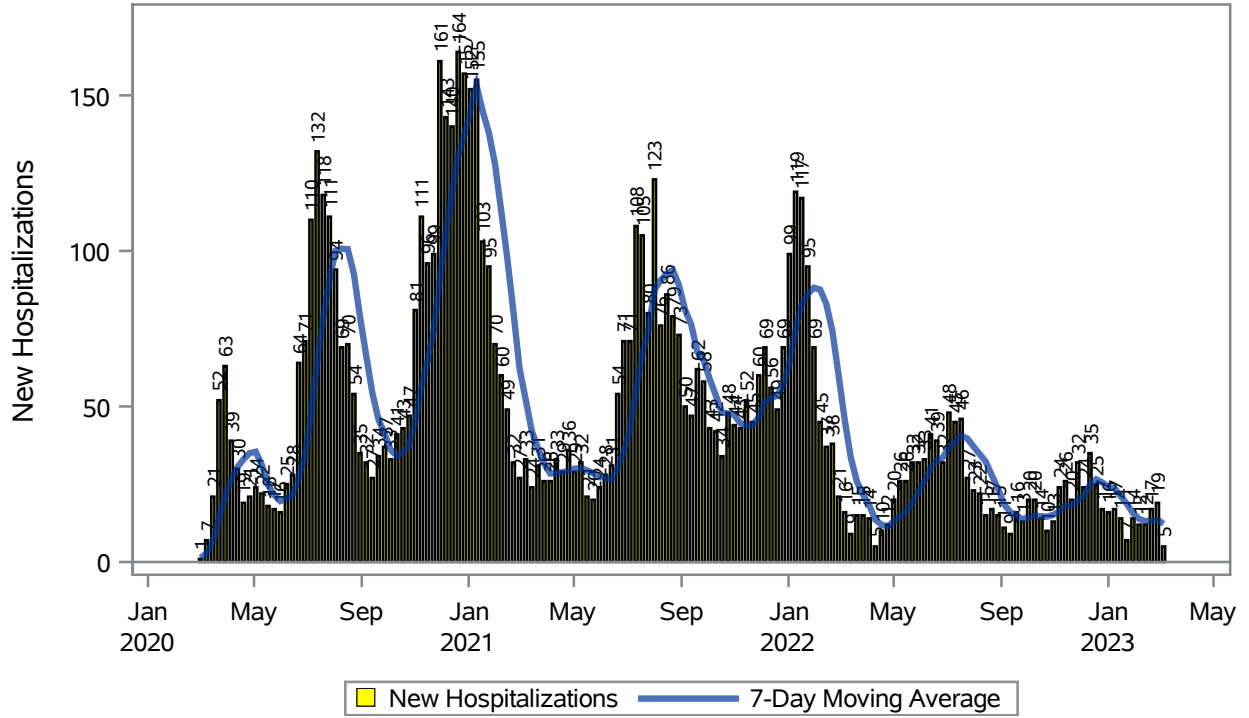
Note: Testing Data includes a 3 day delay

Investigations are ongoing; data are subject to change.

Reporting through 13MAR2023

Henderson zip codes include 89002, 89011, 89012, 89014, 89015, 89044, 89052, 89074, 89119, 89120, 89122, 89123, 89124, 89183.

COVID19 Hospitalizations for Henderson, 7-Day Moving Average



Investigations are ongoing; data are subject to change.

Reporting through 13MAR2023

Henderson zip codes include 89002, 89011, 89012, 89014, 89015, 89044, 89052, 89074, 89119, 89120, 89122, 89123, 89124, 89183.

Table 3: New COVID19-Related Hospitalizations and 7-Day Moving Average in Henderson, previous month

Week	Hospitalizations	7-Day Moving Average
12FEB2023	12	13.1
19FEB2023	17	13.3
26FEB2023	19	13.6
05MAR2023	5	12.3

Note1: Admission Date is calculated as follows based on completed information:
A) COVID19 Case is hospitalized B) COVID19 Case has a hospital admission date.

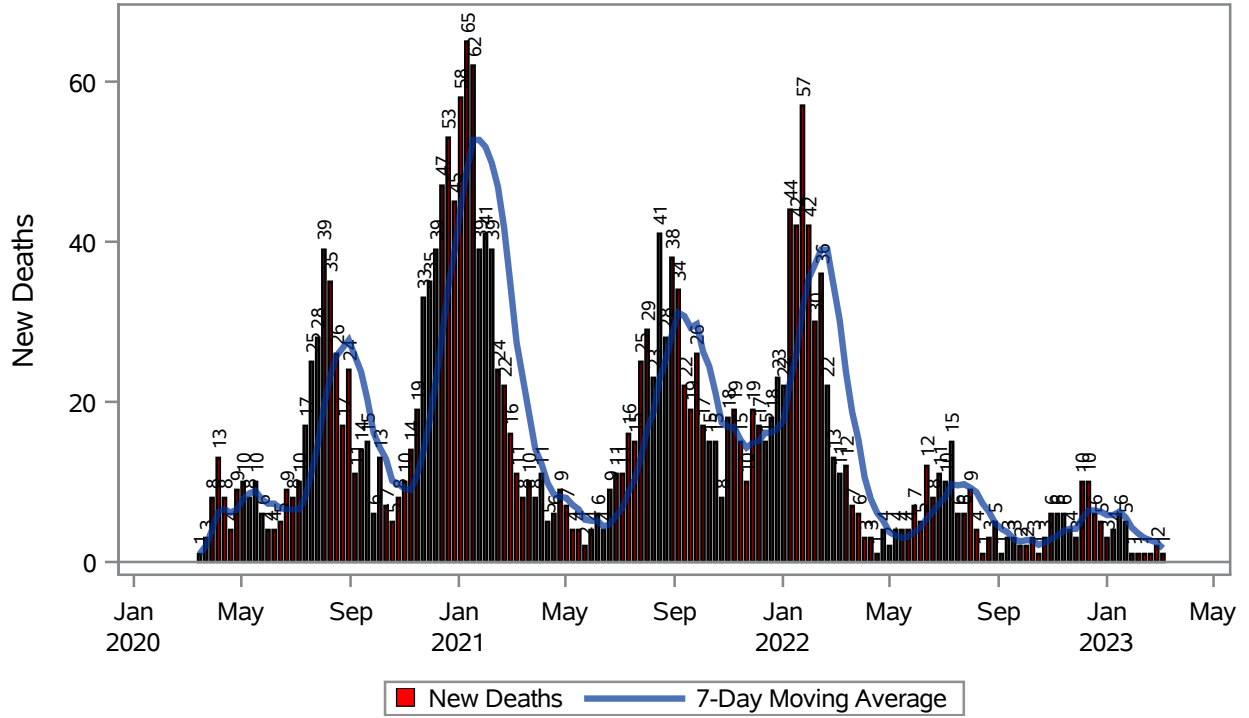
If admission date is missing, then the following is substituted temporarily, in order:
1) Disease onset date 2) Disease diagnosis date 3) Lab result collection date 4) Report date to SNHD.

Investigations are ongoing; data are subject to change.

Reporting through 13MAR2023

Henderson zip codes include 89002, 89011, 89012, 89014, 89015, 89044, 89052, 89074, 89119, 89120, 89122, 89123, 89124, 89183.

COVID19 Deaths for Henderson, 7-Day Moving Average



Investigations are ongoing; data are subject to change.

Reporting through 13MAR2023

Henderson zip codes include 89002, 89011, 89012, 89014, 89015, 89044, 89052, 89074, 89119, 89120, 89122, 89123, 89124, 89183.

Table 4: New COVID19-Related Deaths and 7-Day Moving Average in Henderson, Previous Month

Week	Deaths	7-Day Moving Average
12FEB2023	1	3.00
19FEB2023	1	2.71
26FEB2023	2	2.43
05MAR2023	1	1.71

Note1: Date of Death is calculated as follows based on completed information:
A) COVID19 Case is reported as deceased B) COVID19 Case has a reported date of death.

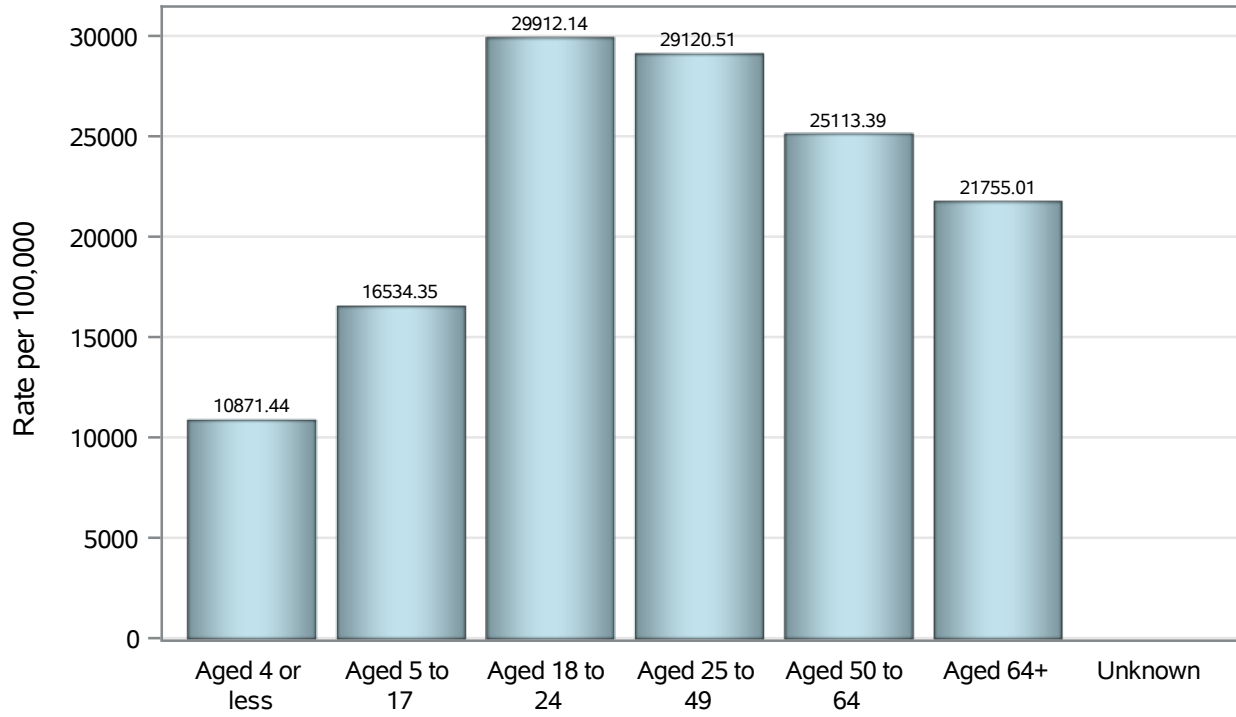
If date of death is missing, then the following is substituted temporarily, in order:
1) Disease onset date 2) Disease diagnosis date
3) Lab result collection date 4) Report date to SNHD.

Investigations are ongoing; data are subject to change.

Reporting through 13MAR2023

Henderson zip codes include 89002, 89011, 89012, 89014, 89015, 89044, 89052, 89074, 89119, 89120, 89122, 89123, 89124, 89183.

Case Age Rates in Henderson

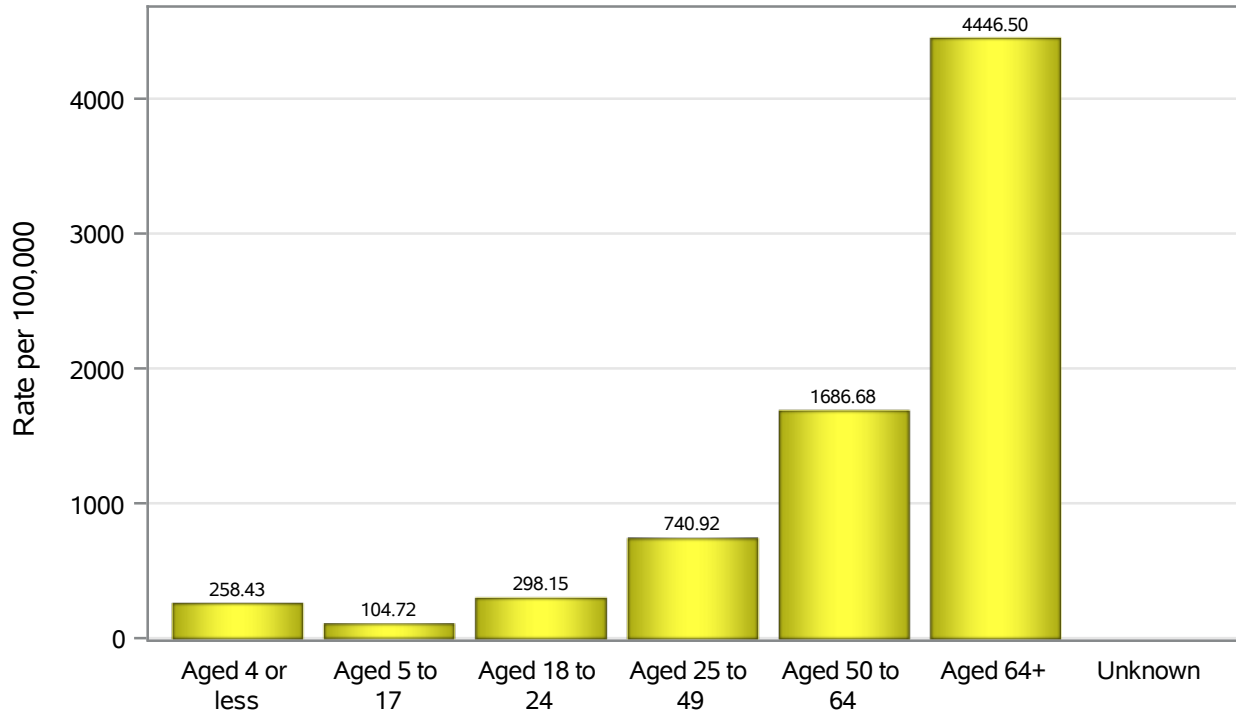


Investigations are ongoing; data are subject to change.

Reporting through 13MAR2023

Henderson zip codes include 89002, 89011, 89012, 89014, 89015, 89044, 89052, 89074, 89119, 89120, 89122, 89123, 89124, 89183.

Hospitalization Age Rates in Henderson

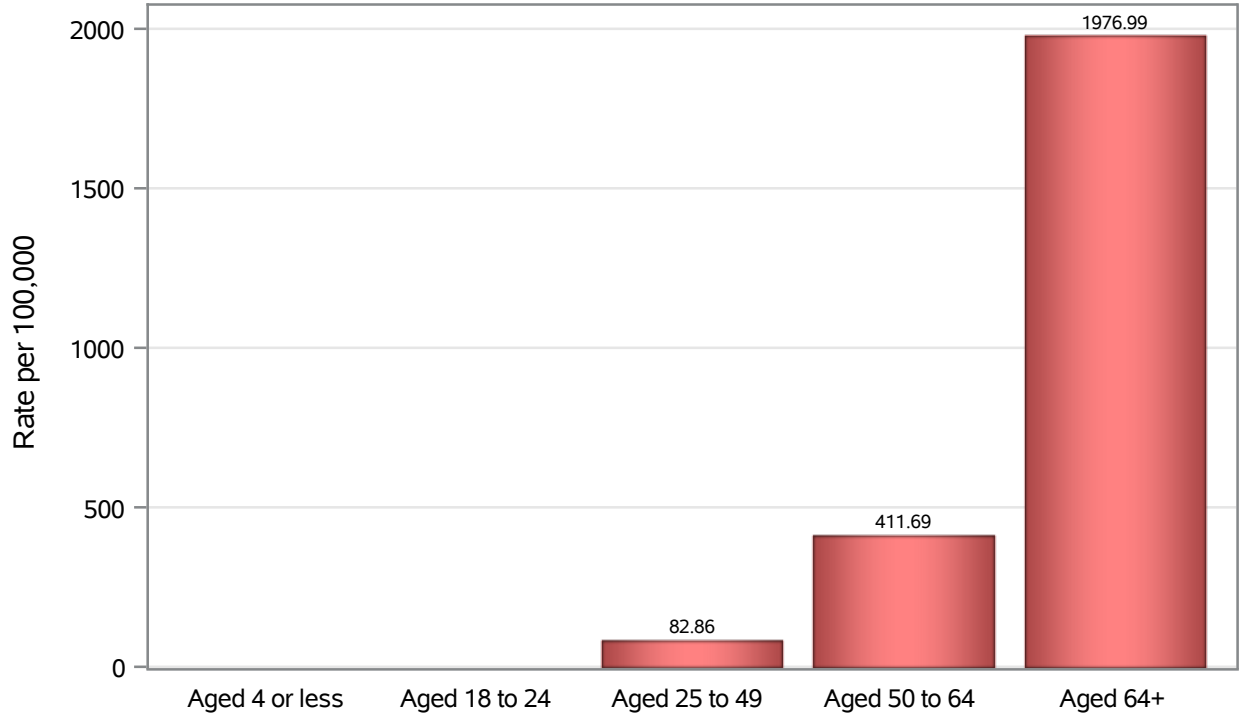


Investigations are ongoing; data are subject to change.

Reporting through 13MAR2023

Henderson zip codes include 89002, 89011, 89012, 89014, 89015, 89044, 89052, 89074, 89119, 89120, 89122, 89123, 89124, 89183.

Death Age Rates in Henderson



Investigations are ongoing; data are subject to change.

Reporting through 13MAR2023

Henderson zip codes include 89002, 89011, 89012, 89014, 89015, 89044, 89052, 89074, 89119, 89120, 89122, 89123, 89124, 89183.

Table 5: Age and COVID19 in Henderson

Case Status	Age Categories	N	%	Population	Rate per 100,000
Cases	Aged 4 or less	3155	2.4	29,021	10871
	Aged 5 to 17	13579	10.5	82,126	16534
	Aged 18 to 24	13243	10.3	44,273	29912
	Aged 25 to 49	54474	42.2	187064	29121
	Aged 50 to 64	25803	20.0	102746	25113
	Aged 64+	18817	14.6	86,495	21755
	Unknown	28	0.0	.	.
Hospitalizations	Aged 4 or less	75	1.0	29,021	258.43
	Aged 5 to 17	86	1.2	82,126	104.72
	Aged 18 to 24	132	1.8	44,273	298.15
	Aged 25 to 49	1386	19.1	187064	740.92
	Aged 50 to 64	1733	23.9	102746	1686.7
	Aged 64+	3846	53.0	86,495	4446.5
	Unknown	1	0.0	.	.
Deaths	Aged 4 or less	1	0.0	29,021	.
	Aged 18 to 24	4	0.2	44,273	.
	Aged 25 to 49	155	6.8	187064	82.86
	Aged 50 to 64	423	18.4	102746	411.69
	Aged 64+	1710	74.6	86,495	1977.0

Note1: Population data source for calculating rate estimates: U.S. Census Bureau, ACS 5-year estimate.

Note2: Rates for categories with fewer than 12 cases are suppressed due to high relative standard error.

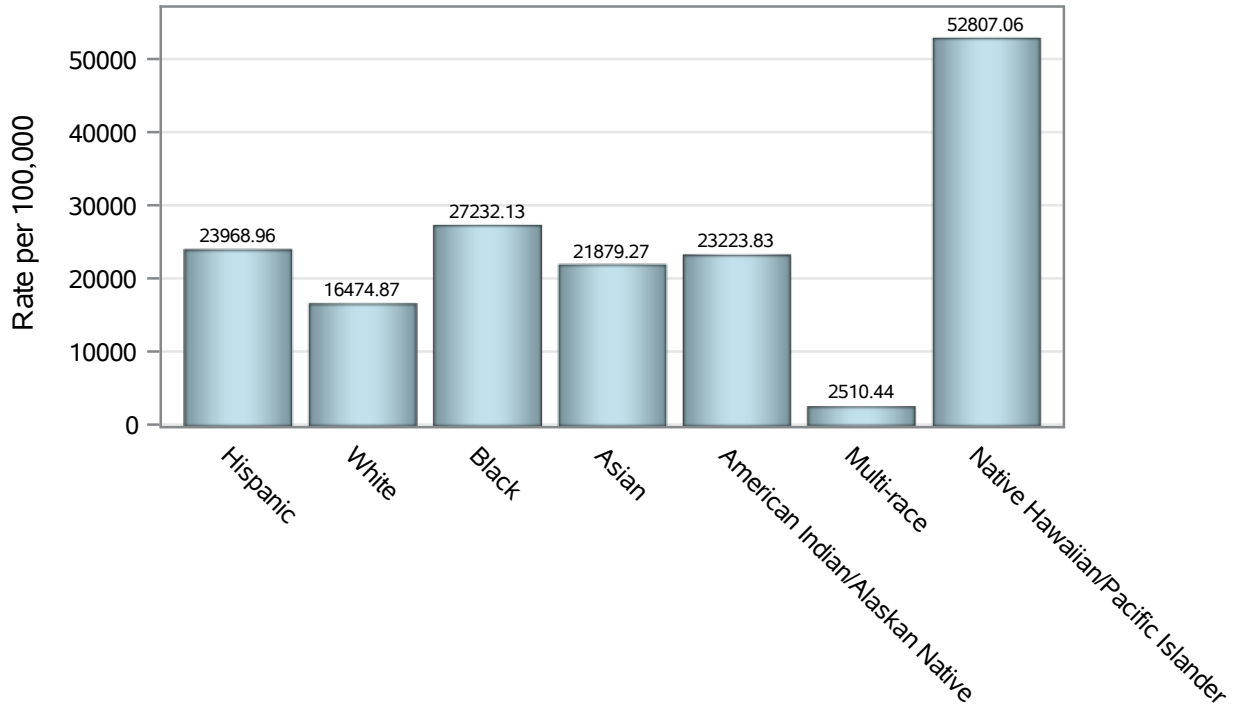
Note3: Hospitalizations are regardless of deceased status; Deaths are regardless of hospitalization status

Investigations are ongoing; data are subject to change.

Reporting through 13MAR2023

Henderson zip codes include 89002, 89011, 89012, 89014, 89015, 89044, 89052, 89074, 89119, 89120, 89122, 89123, 89124, 89183.

Case Race/Ethnicity Rates in Henderson

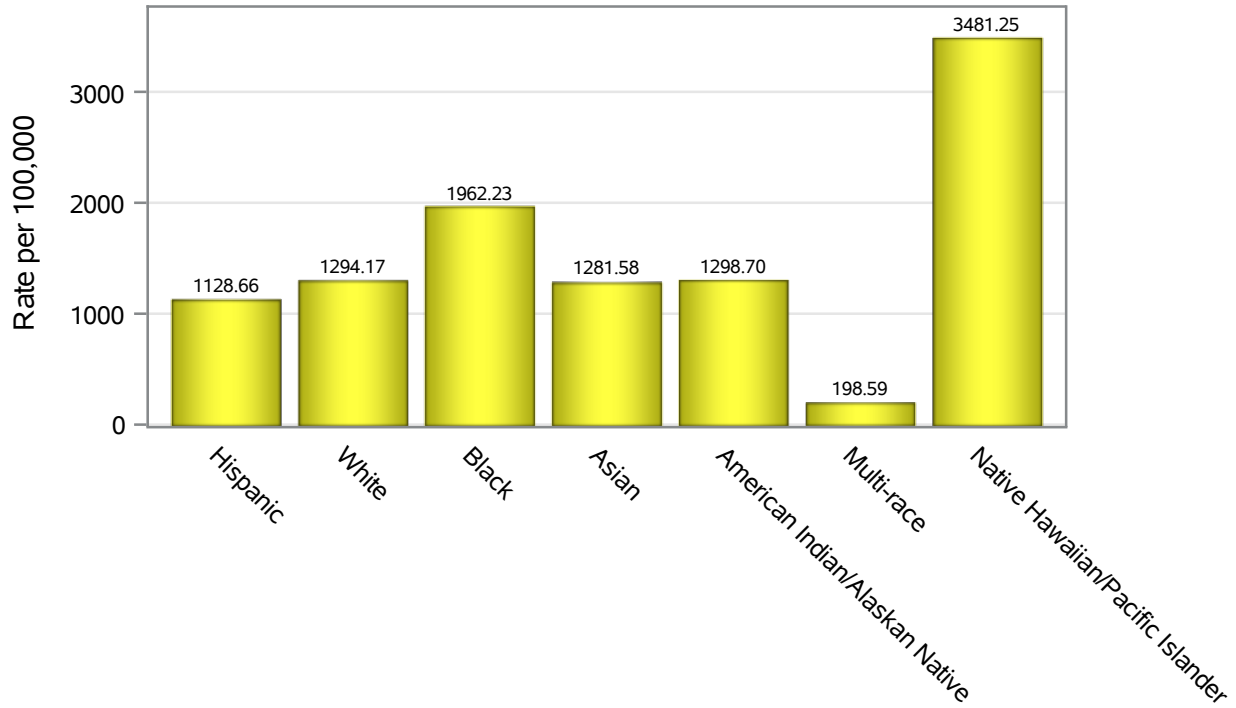


Investigations are ongoing; data are subject to change.

Reporting through 13MAR2023

Henderson zip codes include 89002, 89011, 89012, 89014, 89015, 89044, 89052, 89074, 89119, 89120, 89122, 89123, 89124, 89183.

Hospitalization Race/Ethnicity Rates in Henderson

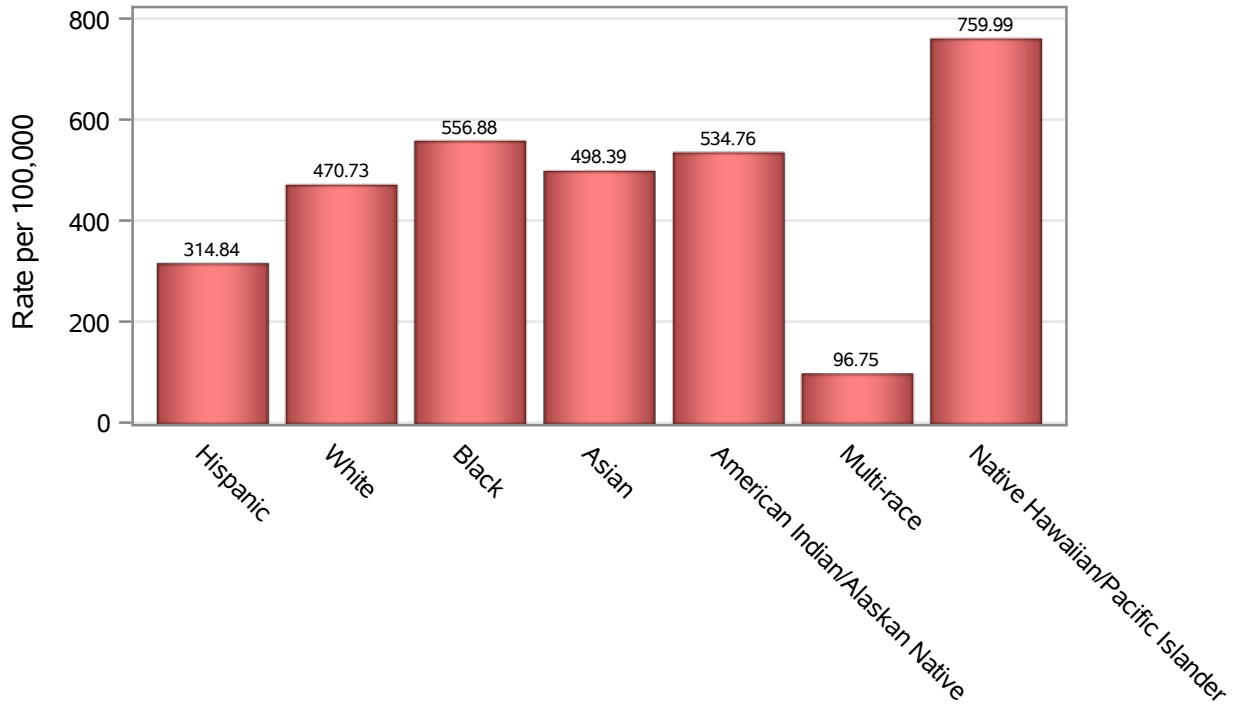


Investigations are ongoing; data are subject to change.

Reporting through 13MAR2023

Henderson zip codes include 89002, 89011, 89012, 89014, 89015, 89044, 89052, 89074, 89119, 89120, 89122, 89123, 89124, 89183.

Death Race/Ethnicity Rates in Henderson



Investigations are ongoing; data are subject to change.

Reporting through 13MAR2023

Henderson zip codes include 89002, 89011, 89012, 89014, 89015, 89044, 89052, 89074, 89119, 89120, 89122, 89123, 89124, 89183.

Table 6: Race/Ethnicity and COVID19 in Henderson

Case Status	Race Ethnicity Categories	N	%	Population	Rate per 100,000
Cases	Hispanic	29158	22.6	121649	23969
	White	48018	37.2	291462	16475
	Black	10367	8.0	38,069	27232
	Asian	11370	8.8	51,967	21879
	American Indian/Alaskan Native	608	0.5	2,618	23224
	Multi-race	493	0.4	19,638	2510.4
	Native Hawaiian/Pacific Islander	2154	1.7	4,079	52807
	Unknown	26931	20.9	.	.
Hospitalizations	Hispanic	1373	18.9	121649	1128.7
	White	3772	52.0	291462	1294.2
	Black	747	10.3	38,069	1962.2
	Asian	666	9.2	51,967	1281.6
	American Indian/Alaskan Native	34	0.5	2,618	1298.7
	Multi-race	39	0.5	19,638	198.59
	Native Hawaiian/Pacific Islander	142	2.0	4,079	3481.2
	Unknown	486	6.7	.	.
Deaths	Hispanic	383	16.7	121649	314.84
	White	1372	59.8	291462	470.73
	Black	212	9.2	38,069	556.88
	Asian	259	11.3	51,967	498.39
	American Indian/Alaskan Native	14	0.6	2,618	534.76
	Multi-race	19	0.8	19,638	96.75
	Native Hawaiian/Pacific Islander	31	1.4	4,079	759.99
	Unknown	3	0.1	.	.

Note1: Population data source for calculating rate estimates: U.S. Census Bureau, ACS 5-year estimate.

Note2: Rates for categories with fewer than 12 cases are suppressed due to high relative standard error.

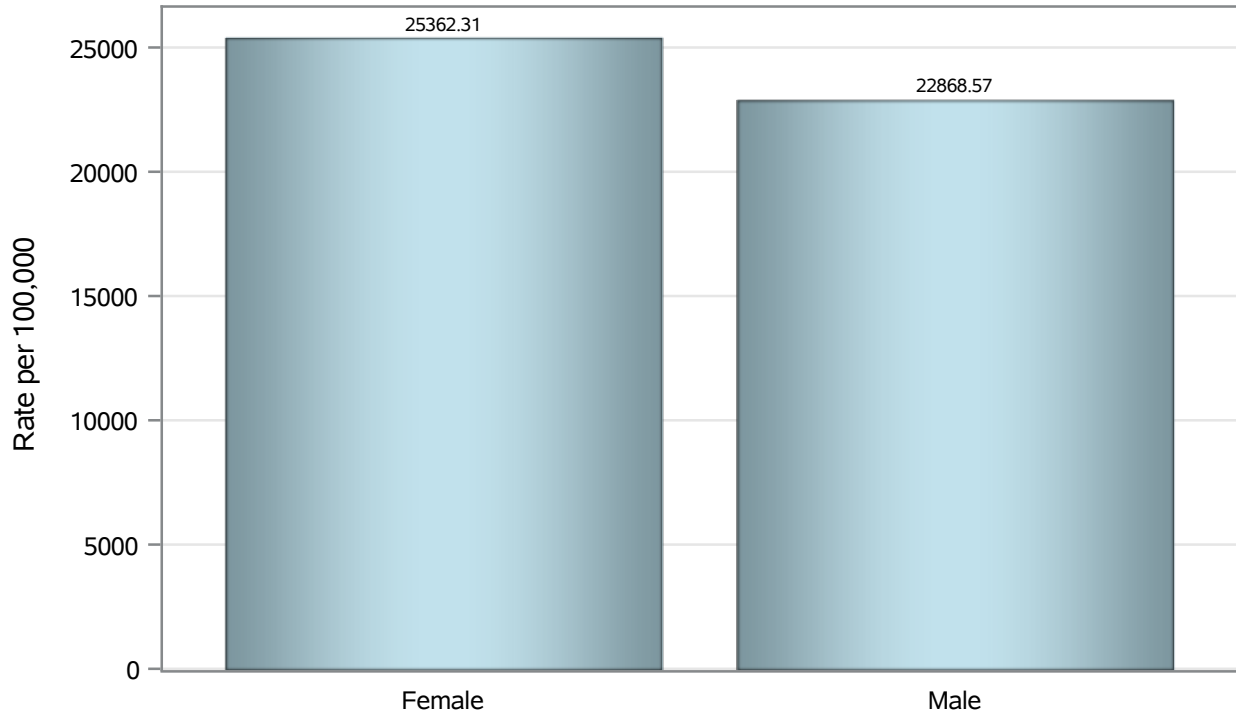
Note3: Hospitalizations are regardless of deceased status; Deaths are regardless of hospitalization status

Investigations are ongoing; data are subject to change.

Reporting through 13MAR2023

Henderson zip codes include 89002, 89011, 89012, 89014, 89015, 89044, 89052, 89074, 89119, 89120, 89122, 89123, 89124, 89183.

Case Birth Sex Rates in Henderson

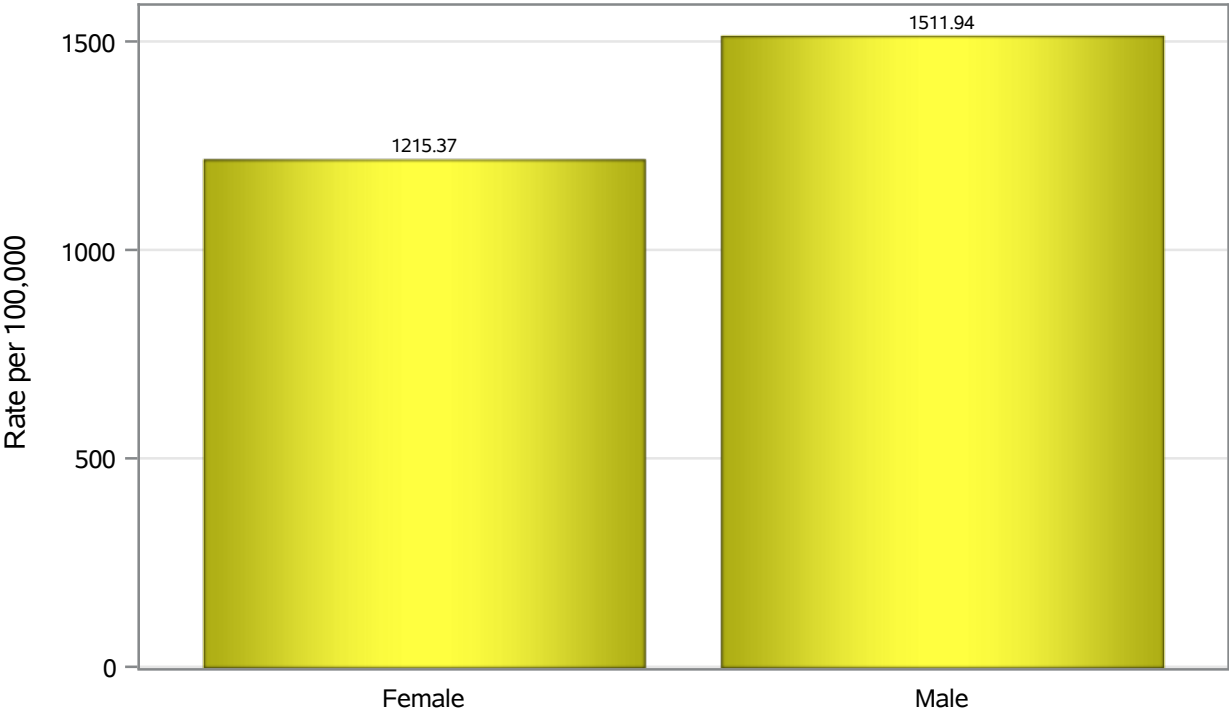


Investigations are ongoing; data are subject to change.

Reporting through 13MAR2023

Henderson zip codes include 89002, 89011, 89012, 89014, 89015, 89044, 89052, 89074, 89119, 89120, 89122, 89123, 89124, 89183.

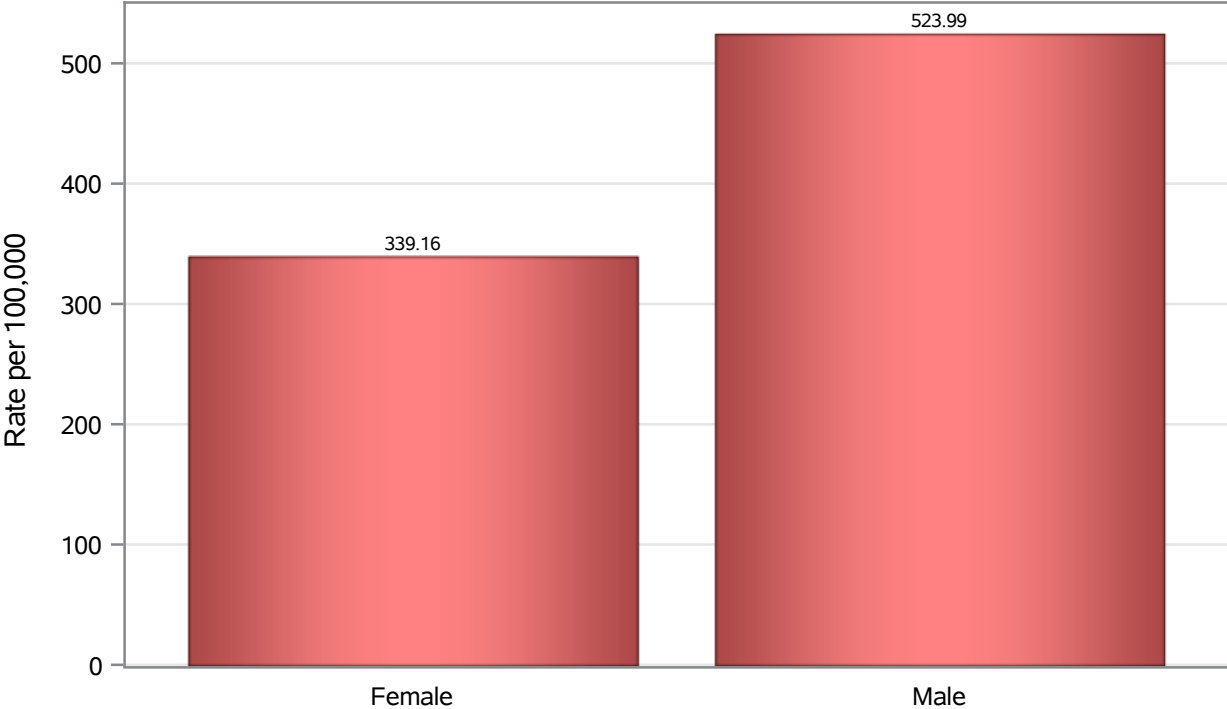
Hospitalization Birth Sex Rates in Henderson



Investigations are ongoing; data are subject to change.
Reporting through 13MAR2023

Henderson zip codes include 89002, 89011, 89012, 89014, 89015, 89044, 89052, 89074, 89119, 89120, 89122, 89123, 89124, 89183.

Death Birth Sex Rates in Henderson



Investigations are ongoing; data are subject to change.
Reporting through 13MAR2023

Henderson zip codes include 89002, 89011, 89012, 89014, 89015, 89044, 89052, 89074,
89119, 89120, 89122, 89123, 89124, 89183.

Table 7: Birth Sex and COVID19 in Henderson

Case Status	Birth Sex Categories	N	%	Population	Rate per 100,000
Cases	Female	67675	52.4	266833	25362
	Male	60577	46.9	264892	22869
	Unknown	847	0.7	.	.
Hospitalizations	Female	3243	44.7	266833	1215.4
	Male	4005	55.2	264892	1511.9
	Unknown	11	0.2	.	.
Deaths	Female	905	39.5	266833	339.16
	Male	1388	60.5	264892	523.99

Note1: Population data source for calculating rate estimates: U.S. Census Bureau, ACS 5-year estimate.

Note2: Rates for categories with fewer than 12 cases are suppressed due to high relative standard error.

Note3: Hospitalizations are regardless of deceased status; Deaths are regardless of hospitalization status

Investigations are ongoing; data are subject to change.

Reporting through 13MAR2023

Henderson zip codes include 89002, 89011, 89012, 89014, 89015, 89044, 89052, 89074, 89119, 89120, 89122, 89123, 89124, 89183.