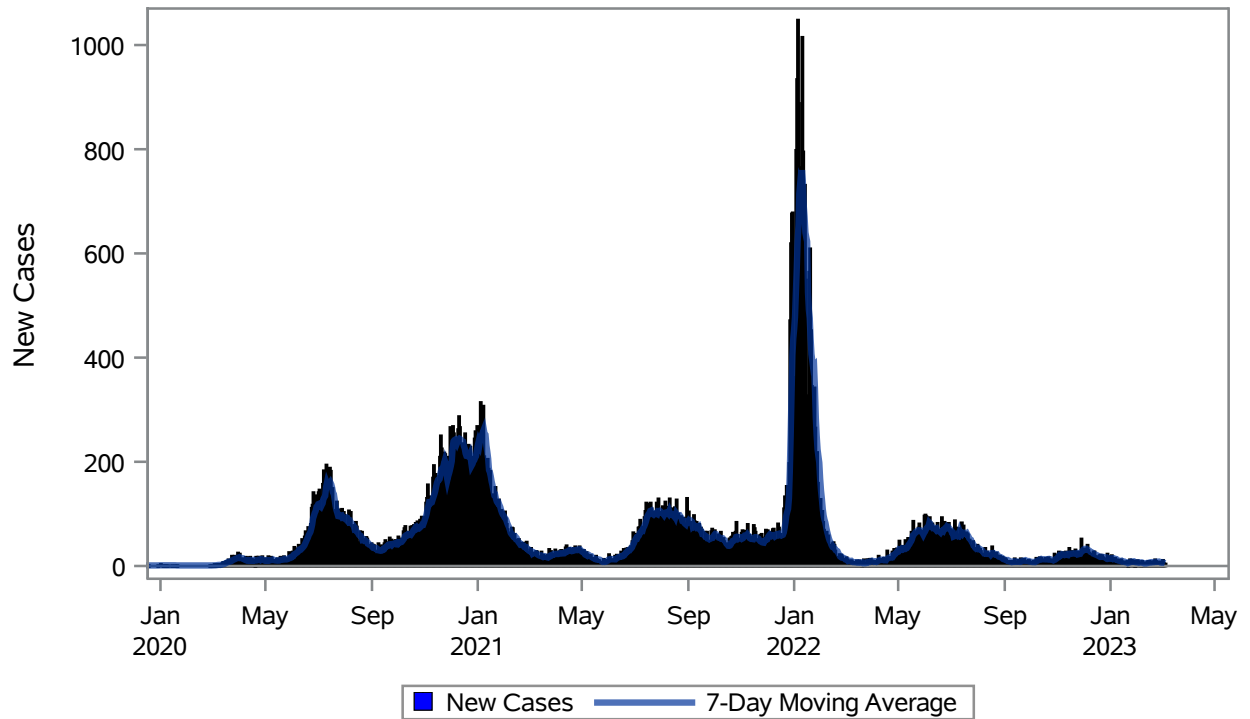


### COVID19 Cases for North Las Vegas, 7-Day Moving Average



Investigations are ongoing; data are subject to change.

Reporting through 06MAR2023

North Las Vegas zip codes include 89030, 89031, 89032, 89033, 89036, 89081, 89084, 89085, 89086, 89087.

**Table 1: New COVID19 Cases and 7-Day Moving Average in North Las Vegas, Previous Two Weeks**

Date (Daily)	New Cases	7-Day Moving Average
21FEB2023	12	7.71
22FEB2023	9	7.86
23FEB2023	7	7.86
24FEB2023	7	8.29
25FEB2023	7	8.14
26FEB2023	8	8.43
27FEB2023	5	7.86
28FEB2023	3	6.57
01MAR2023	7	6.29
02MAR2023	11	6.86
03MAR2023	5	6.57
04MAR2023	3	6.00

---

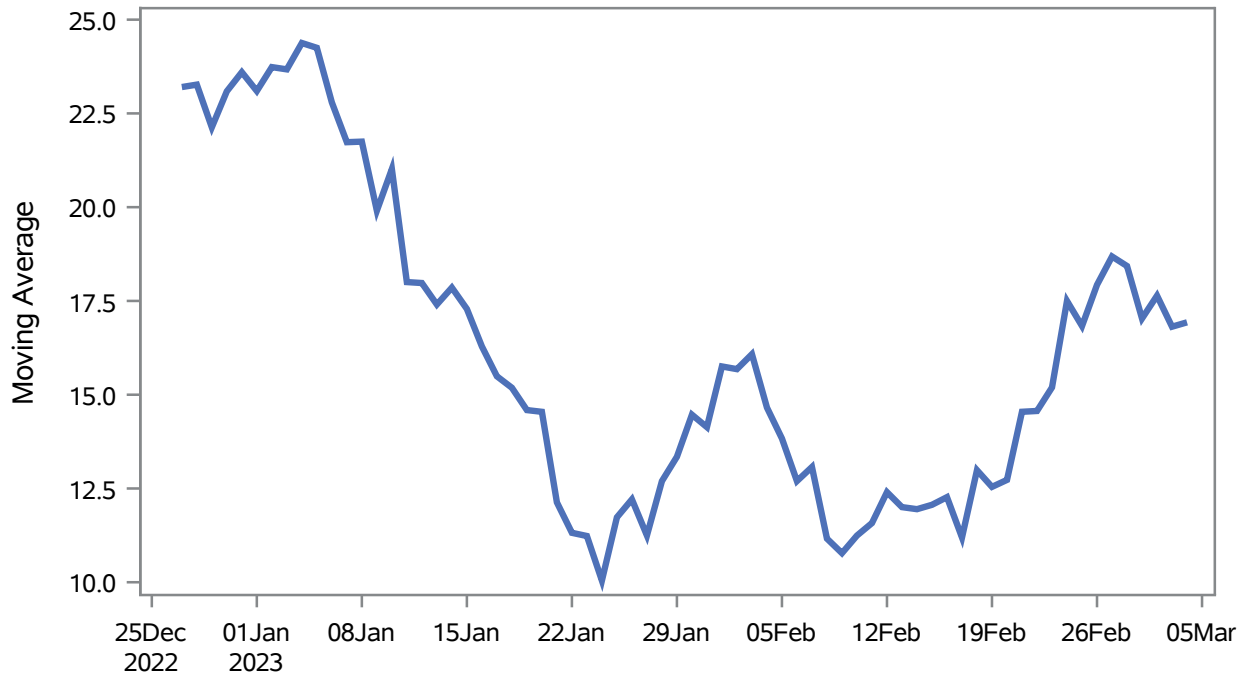
Note1: Event Date is calculated as follows based on completed information:  
1) Disease onset date 2) Disease diagnosis date 3) Lab result collection date 4) Report date to SNHD.

---

**Investigations are ongoing; data are subject to change.  
Reporting through 06MAR2023**

**North Las Vegas zip codes include 89030, 89031, 89032, 89033, 89036, 89081, 89084, 89085, 89086, 89087.**

### Percent of People Receiving COVID-19 Viral Tests Who Have Positive Results in North Las Vegas



Investigations are ongoing; data are subject to change.

Reporting through 06MAR2023

North Las Vegas zip codes include 89030, 89031, 89032, 89033, 89036, 89081, 89084, 89085, 89086, 89087.

**Table 2: Percent of People Receiving COVID-19 Viral Tests Who Have Positive Results in North Las Vegas**

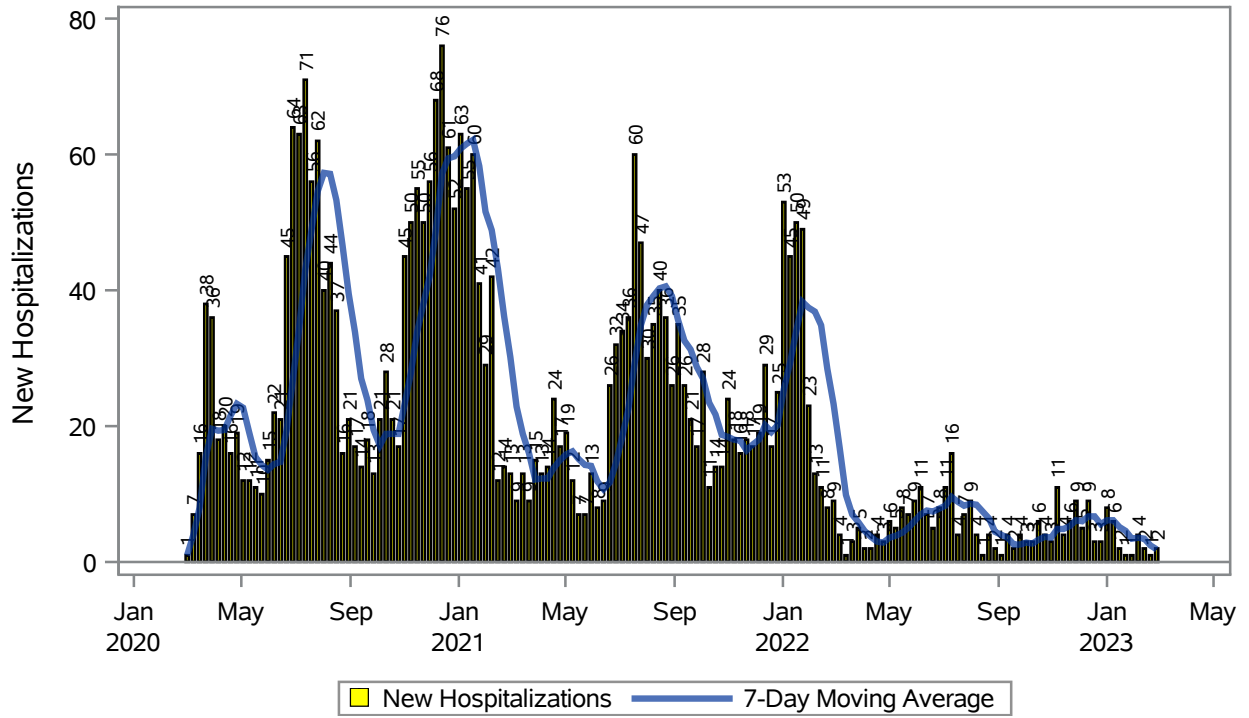
Collection Date	Positive	Negative	Equivocal	Total	% Positivity	7-Day Moving Average
18FEB2023	9	28		37	24.32	13.0
19FEB2023	4	31		35	11.43	12.5
20FEB2023	6	57		63	9.52	12.7
21FEB2023	20	76		96	20.83	14.5
22FEB2023	16	78		94	17.02	14.6
23FEB2023	18	73		91	19.78	15.2
24FEB2023	19	78		97	19.59	17.5
25FEB2023	11	45		56	19.64	16.8
26FEB2023	13	55		68	19.12	17.9
27FEB2023	16	92		108	14.81	18.7
28FEB2023	16	68		84	19.05	18.4
01MAR2023	6	77		83	7.23	17.0
02MAR2023	19	60		79	24.05	17.6
03MAR2023	8	50		58	13.79	16.8
04MAR2023	9	35		44	20.45	16.9

Note: Testing Data includes a 3 day delay

**Investigations are ongoing; data are subject to change.  
Reporting through 06MAR2023**

**North Las Vegas zip codes include 89030, 89031, 89032, 89033, 89036, 89081, 89084, 89085, 89086, 89087.**

### COVID19 Hospitalizations for North Las Vegas, 7-Day Moving Average



Investigations are ongoing; data are subject to change.

Reporting through 06MAR2023

North Las Vegas zip codes include 89030, 89031, 89032, 89033, 89036, 89081, 89084, 89085, 89086, 89087.

**Table 3: New COVID19-Related Hospitalizations and 7-Day Moving Average in North Las Vegas, previous month**

Week	Hospitalizations	7-Day Moving Average
05FEB2023	4	3.57
12FEB2023	2	3.43
19FEB2023	1	2.43
26FEB2023	2	1.86

---

Note1: Admission Date is calculated as follows based on completed information:  
A) COVID19 Case is hospitalized B) COVID19 Case has a hospital admission date.

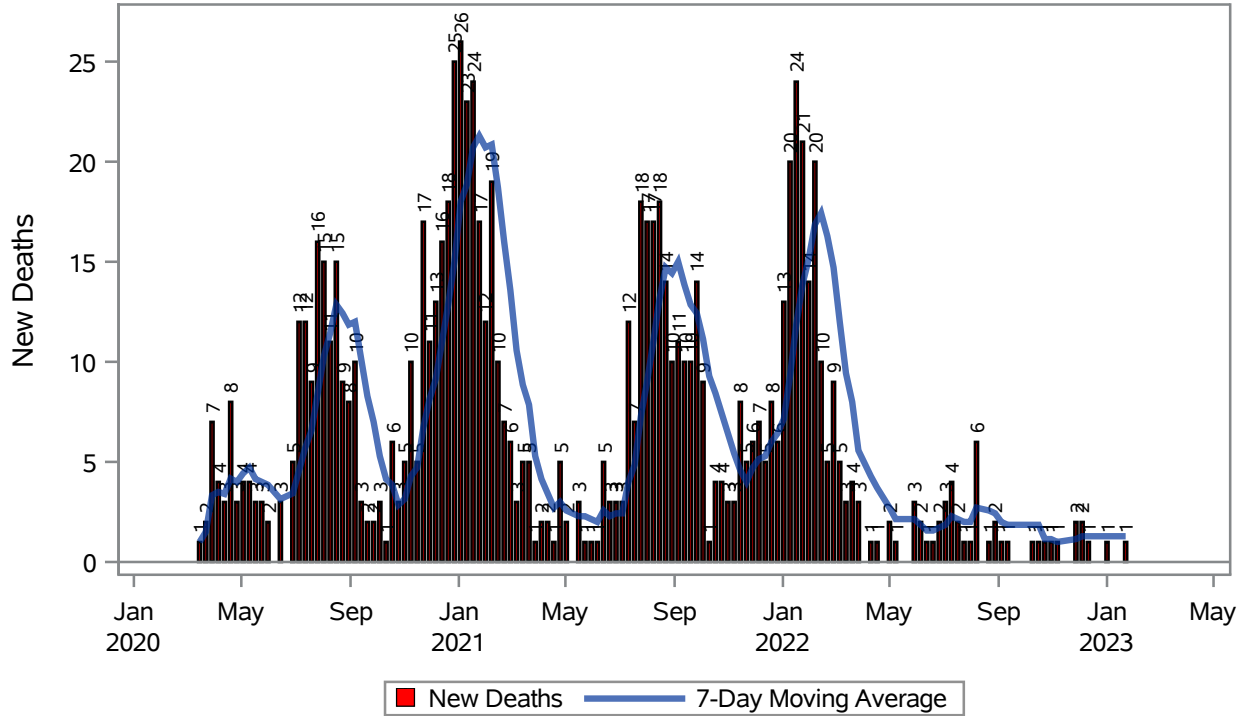
If admission date is missing, then the following is substituted temporarily, in order:  
1) Disease onset date 2) Disease diagnosis date 3) Lab result collection date 4) Report date to SNHD.

---

**Investigations are ongoing; data are subject to change.  
Reporting through 06MAR2023**

**North Las Vegas zip codes include 89030, 89031, 89032, 89033, 89036, 89081, 89084, 89085, 89086, 89087.**

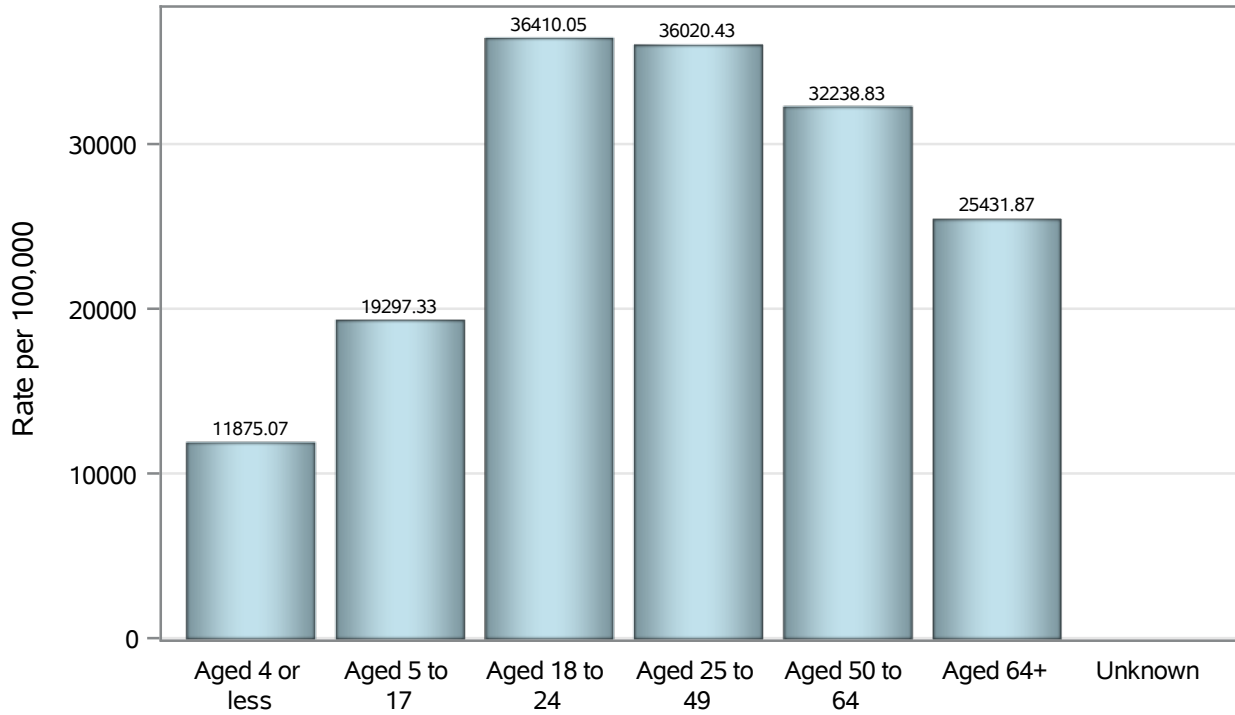
### COVID19 Deaths for North Las Vegas, 7-Day Moving Average



Investigations are ongoing; data are subject to change.  
Reporting through 06MAR2023

North Las Vegas zip codes include 89030, 89031, 89032, 89033, 89036, 89081, 89084, 89085, 89086, 89087.

### Case Age Rates in North Las Vegas



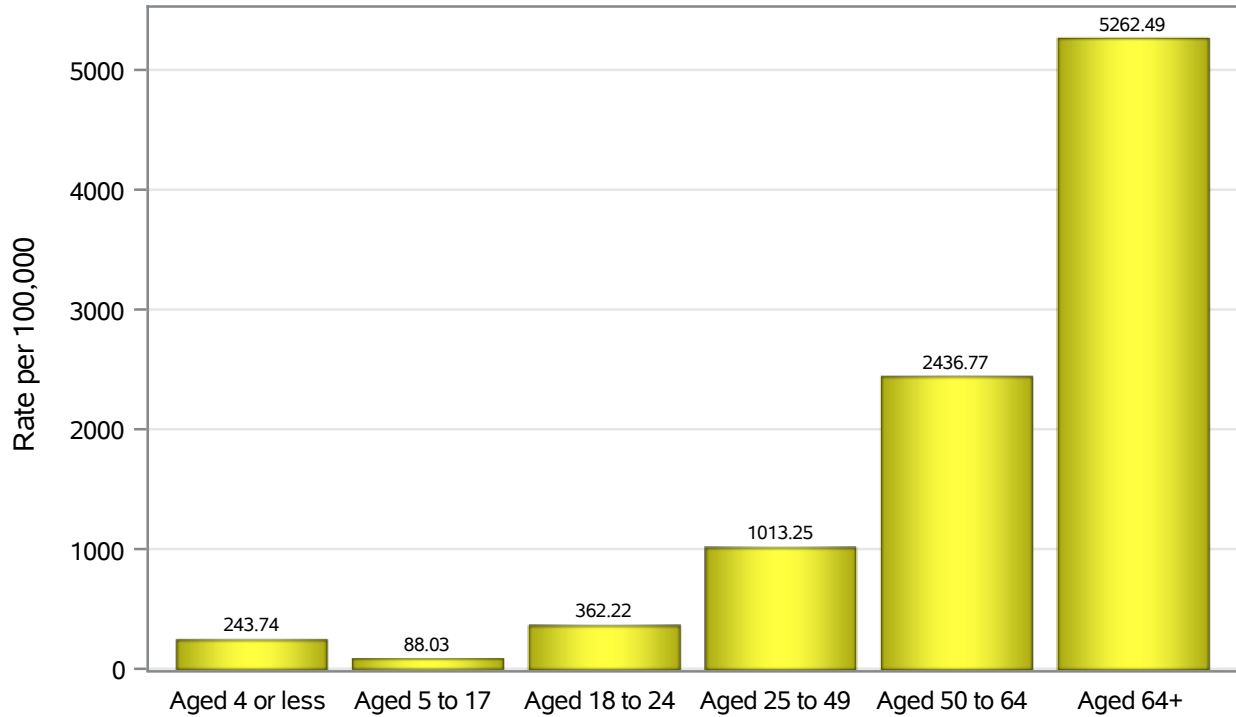
Investigations are ongoing; data are subject to change.

Reporting through 06MAR2023

North Las Vegas zip codes include 89030, 89031, 89032, 89033, 89036, 89081, 89084, 89085, 89086, 89087.



### Hospitalization Age Rates in North Las Vegas

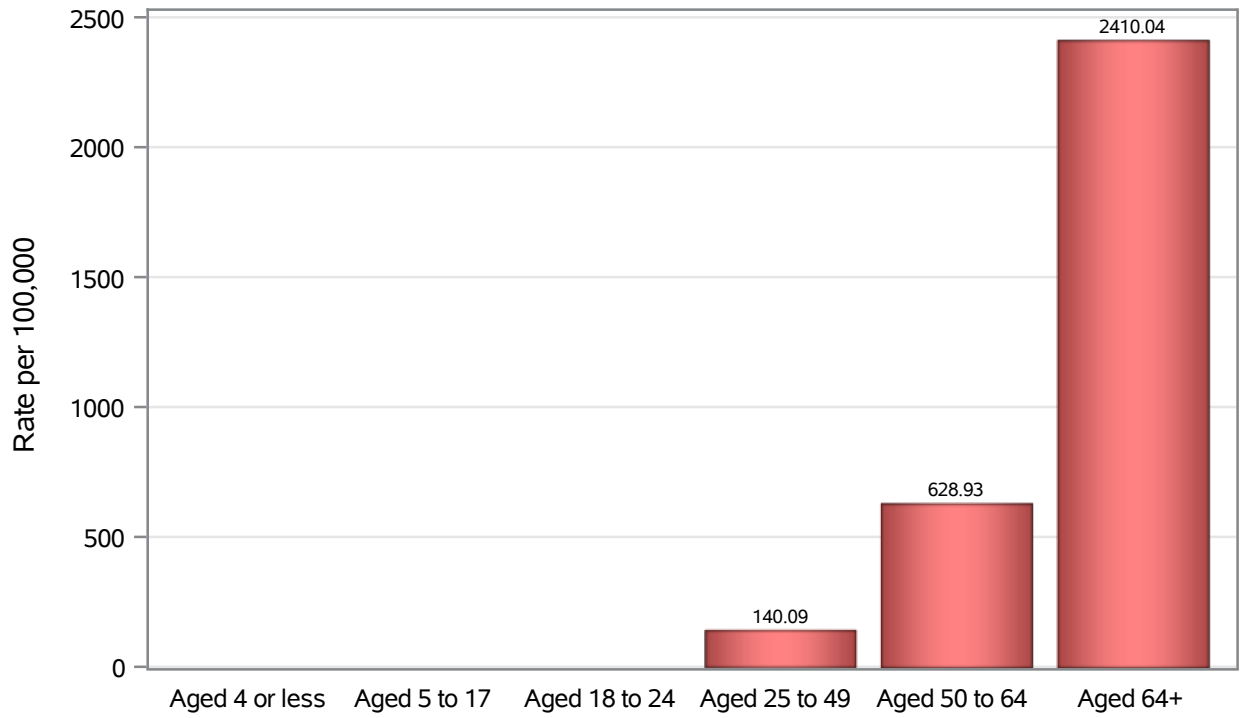


Investigations are ongoing; data are subject to change.

Reporting through 06MAR2023

North Las Vegas zip codes include 89030, 89031, 89032, 89033, 89036, 89081, 89084, 89085, 89086, 89087.

### Death Age Rates in North Las Vegas



Investigations are ongoing; data are subject to change.

Reporting through 06MAR2023

North Las Vegas zip codes include 89030, 89031, 89032, 89033, 89036, 89081, 89084, 89085, 89086, 89087.

**Table 5: Age and COVID19 in North Las Vegas**

Case Status	Age Categories	N	%	Population	Rate per 100,000
Cases	Aged 4 or less	2095	3.1	17,642	11875
	Aged 5 to 17	9645	14.2	49,981	19297
	Aged 18 to 24	8343	12.3	22,914	36410
	Aged 25 to 49	29826	44.0	82,803	36020
	Aged 50 to 64	11841	17.5	36,729	32239
	Aged 64+	6036	8.9	23,734	25432
	Unknown	15	0.0	.	.
Hospitalizations	Aged 4 or less	43	1.4	17,642	243.74
	Aged 5 to 17	44	1.4	49,981	88.03
	Aged 18 to 24	83	2.6	22,914	362.22
	Aged 25 to 49	839	26.6	82,803	1013.2
	Aged 50 to 64	895	28.4	36,729	2436.8
	Aged 64+	1249	39.6	23,734	5262.5
	Deaths	Aged 4 or less	3	0.3	17,642
Aged 5 to 17		1	0.1	49,981	.
Aged 18 to 24		2	0.2	22,914	.
Aged 25 to 49		116	12.5	82,803	140.09
Aged 50 to 64		231	25.0	36,729	628.93
Aged 64+		572	61.8	23,734	2410.0

Note1: Population data source for calculating rate estimates: U.S. Census Bureau, ACS 5-year estimate.

Note2: Rates for categories with fewer than 12 cases are suppressed due to high relative standard error.

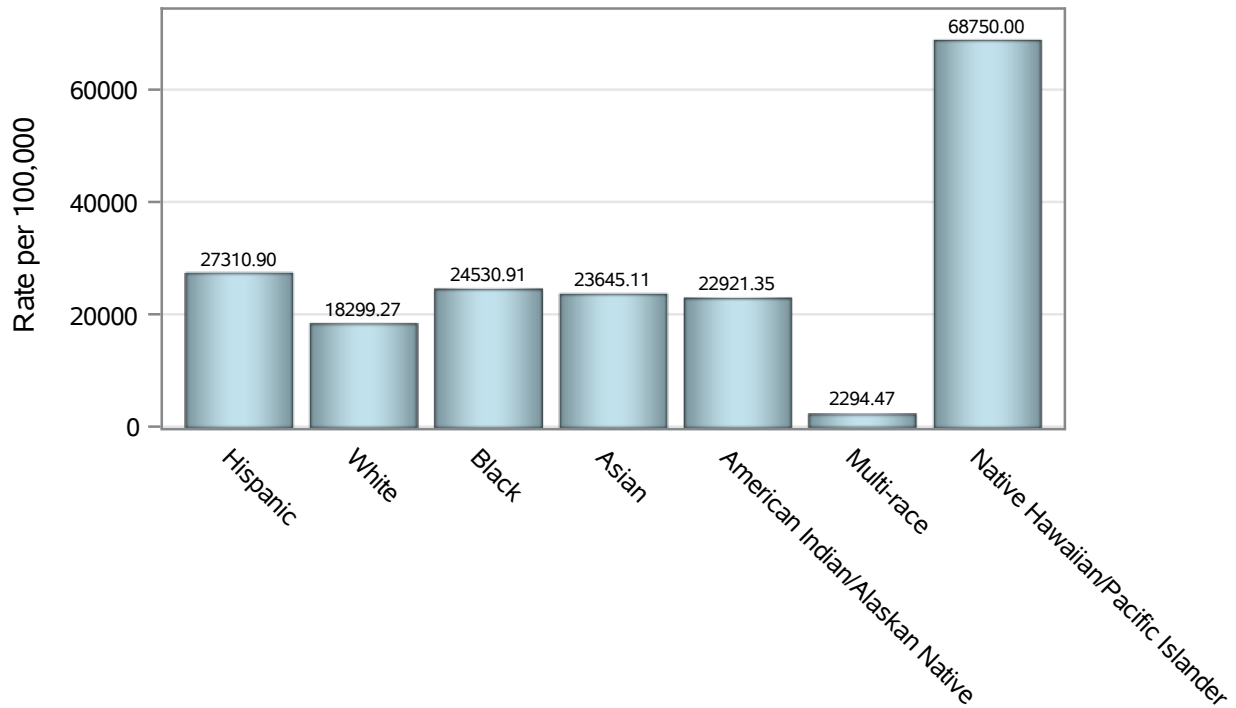
Note3: Hospitalizations are regardless of deceased status; Deaths are regardless of hospitalization status

**Investigations are ongoing; data are subject to change.**

**Reporting through 06MAR2023**

**North Las Vegas zip codes include 89030, 89031, 89032, 89033, 89036, 89081, 89084, 89085, 89086, 89087.**

### Case Race/Ethnicity Rates in North Las Vegas

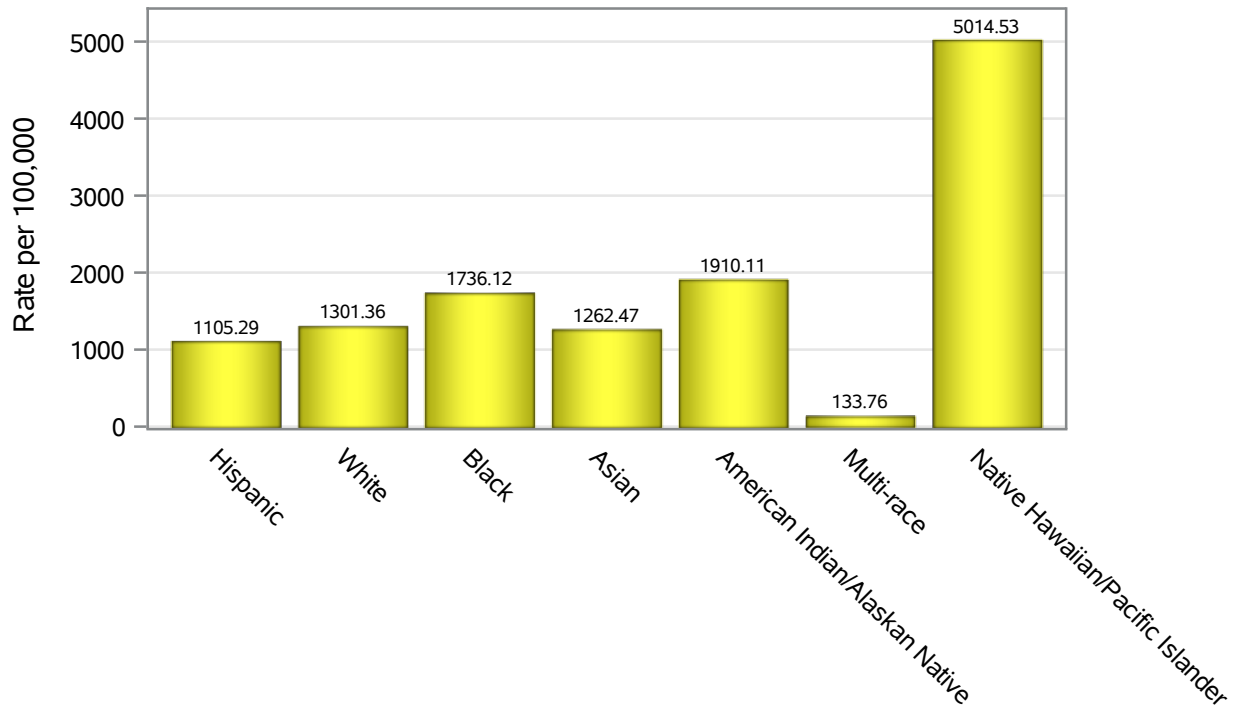


Investigations are ongoing; data are subject to change.

Reporting through 06MAR2023

North Las Vegas zip codes include 89030, 89031, 89032, 89033, 89036, 89081, 89084, 89085, 89086, 89087.

### Hospitalization Race/Ethnicity Rates in North Las Vegas

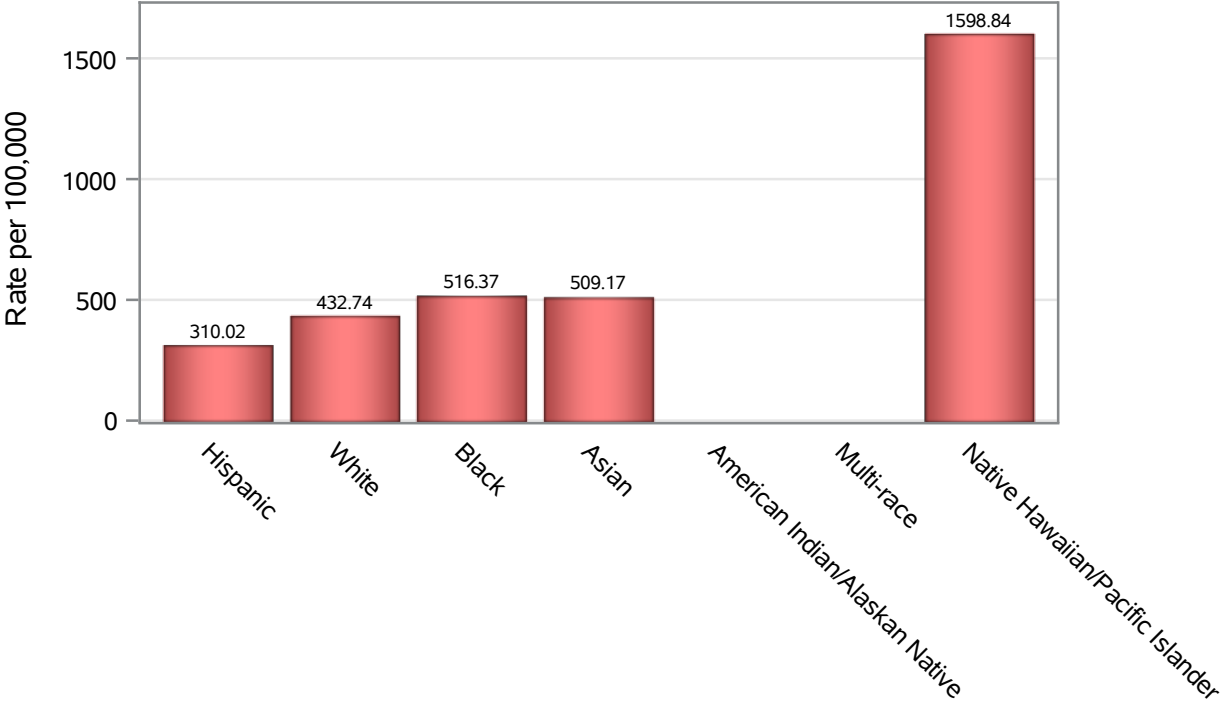


Investigations are ongoing; data are subject to change.

Reporting through 06MAR2023

North Las Vegas zip codes include 89030, 89031, 89032, 89033, 89036, 89081, 89084, 89085, 89086, 89087.

### Death Race/Ethnicity Rates in North Las Vegas



Investigations are ongoing; data are subject to change.

Reporting through 06MAR2023

North Las Vegas zip codes include 89030, 89031, 89032, 89033, 89036, 89081, 89084, 89085, 89086, 89087.

**Table 6: Race/Ethnicity and COVID19 in North Las Vegas**

Case Status	Race Ethnicity Categories	N	%	Population	Rate per 100,000
Cases	Hispanic	26340	38.8	96,445	27311
	White	11629	17.2	63,549	18299
	Black	11544	17.0	47,059	24531
	Asian	3390	5.0	14,337	23645
	American Indian/Alaskan Native	204	0.3	890	22921
	Multi-race	223	0.3	9,719	2294.5
	Native Hawaiian/Pacific Islander	946	1.4	1,376	68750
	Unknown	13525	19.9	.	.
Hospitalizations	Hispanic	1066	33.8	96,445	1105.3
	White	827	26.2	63,549	1301.4
	Black	817	25.9	47,059	1736.1
	Asian	181	5.7	14,337	1262.5
	American Indian/Alaskan Native	17	0.5	890	1910.1
	Multi-race	13	0.4	9,719	133.76
	Native Hawaiian/Pacific Islander	69	2.2	1,376	5014.5
	Unknown	163	5.2	.	.
Deaths	Hispanic	299	32.3	96,445	310.02
	White	275	29.7	63,549	432.74
	Black	243	26.3	47,059	516.37
	Asian	73	7.9	14,337	509.17
	American Indian/Alaskan Native	6	0.6	890	.
	Multi-race	7	0.8	9,719	.
	Native Hawaiian/Pacific Islander	22	2.4	1,376	1598.8

Note1: Population data source for calculating rate estimates: U.S. Census Bureau, ACS 5-year estimate.

Note2: Rates for categories with fewer than 12 cases are suppressed due to high relative standard error.

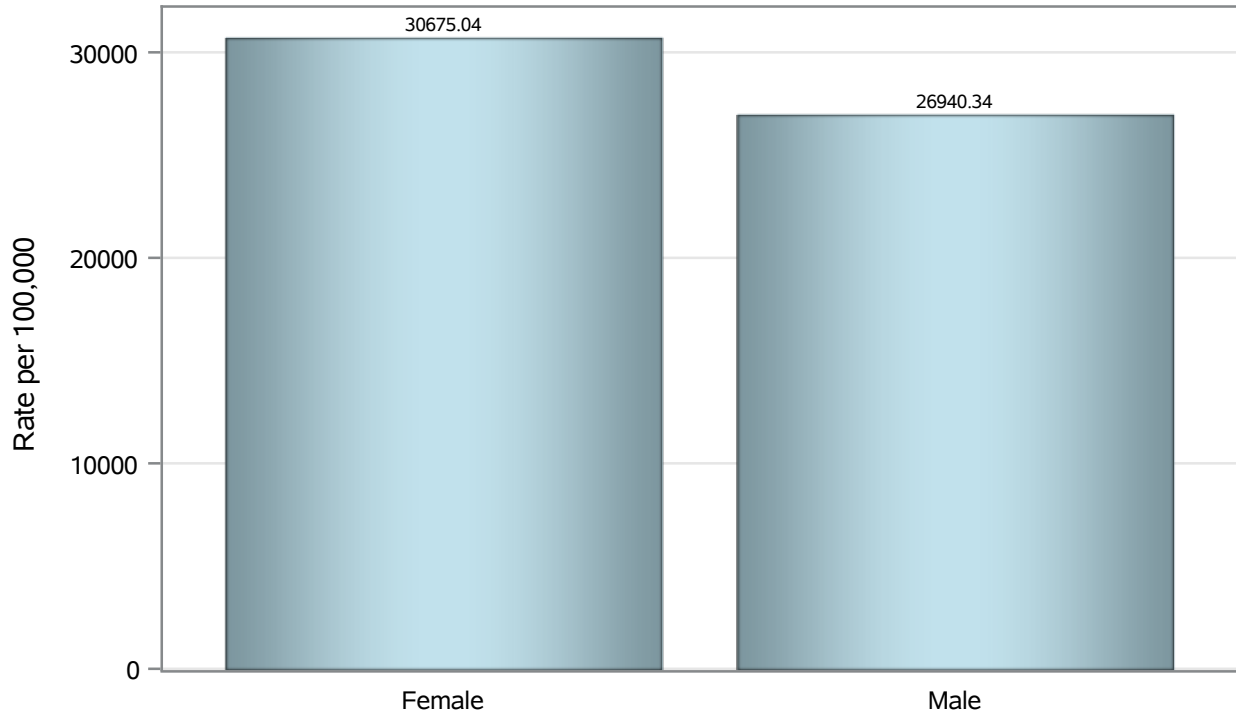
Note3: Hospitalizations are regardless of deceased status; Deaths are regardless of hospitalization status

**Investigations are ongoing; data are subject to change.**

**Reporting through 06MAR2023**

**North Las Vegas zip codes include 89030, 89031, 89032, 89033, 89036, 89081, 89084, 89085, 89086, 89087.**

### Case Birth Sex Rates in North Las Vegas



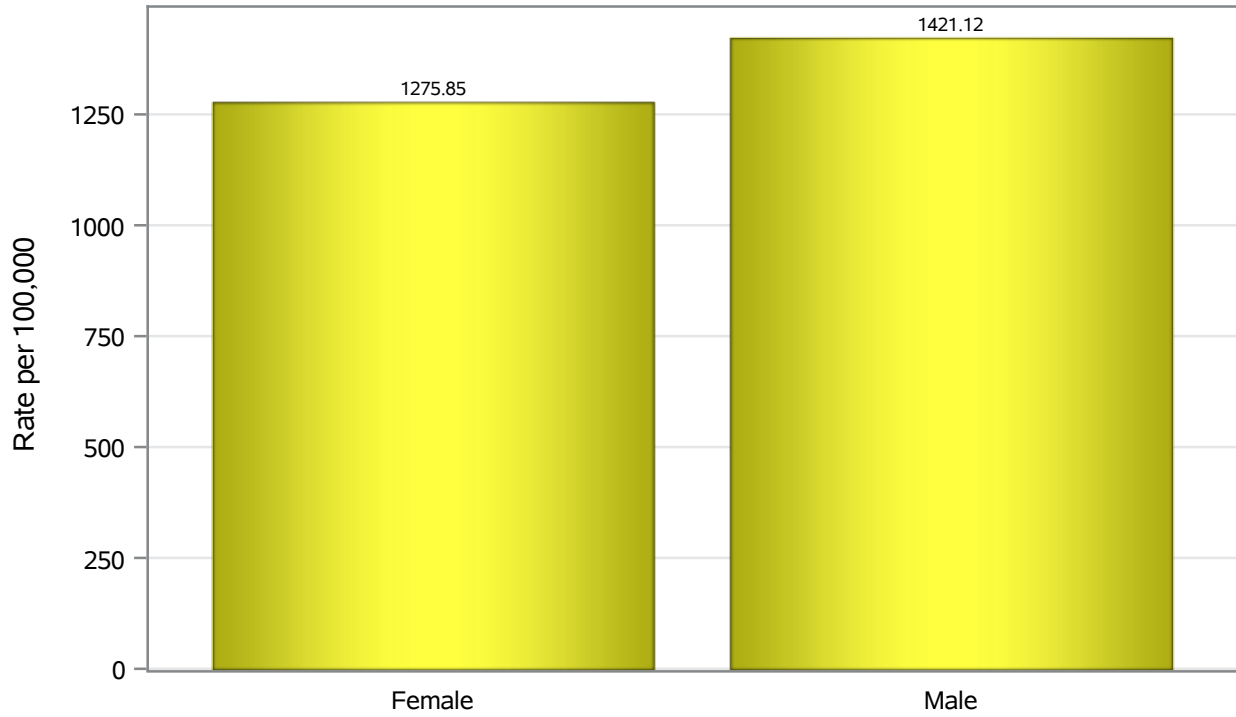
Investigations are ongoing; data are subject to change.

Reporting through 06MAR2023

North Las Vegas zip codes include 89030, 89031, 89032, 89033, 89036, 89081, 89084, 89085, 89086, 89087.



### Hospitalization Birth Sex Rates in North Las Vegas

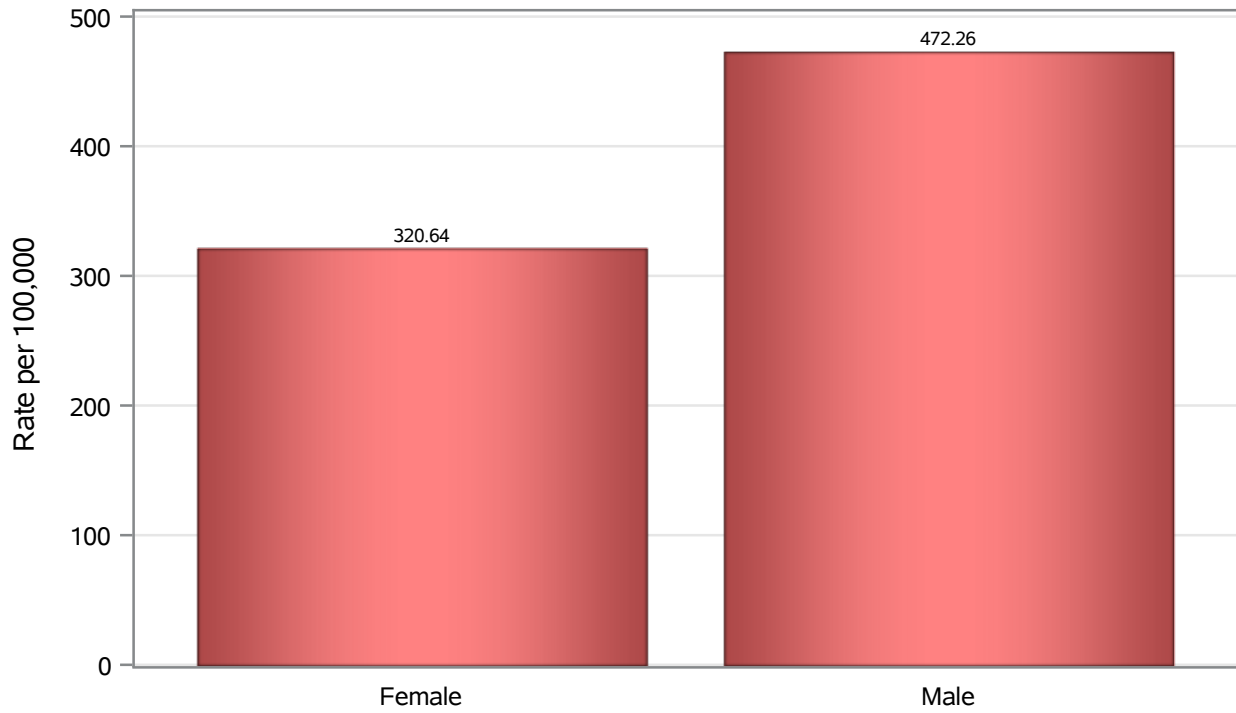


Investigations are ongoing; data are subject to change.

Reporting through 06MAR2023

North Las Vegas zip codes include 89030, 89031, 89032, 89033, 89036, 89081, 89084, 89085, 89086, 89087.

### Death Birth Sex Rates in North Las Vegas



Investigations are ongoing; data are subject to change.

Reporting through 06MAR2023

North Las Vegas zip codes include 89030, 89031, 89032, 89033, 89036, 89081, 89084, 89085, 89086, 89087.

**Table 7: Birth Sex and COVID19 in North Las Vegas**

Case Status	Birth Sex Categories	N	%	Population	Rate per 100,000
Cases	Female	36449	53.8	118823	30675
	Male	30976	45.7	114980	26940
	Unknown	376	0.6	.	.
Hospitalizations	Female	1516	48.1	118823	1275.8
	Male	1634	51.8	114980	1421.1
	Unknown	3	0.1	.	.
Deaths	Female	381	41.2	118823	320.64
	Male	543	58.7	114980	472.26
	Unknown	1	0.1	.	.

Note1: Population data source for calculating rate estimates: U.S. Census Bureau, ACS 5-year estimate.

Note2: Rates for categories with fewer than 12 cases are suppressed due to high relative standard error.

Note3: Hospitalizations are regardless of deceased status; Deaths are regardless of hospitalization status

**Investigations are ongoing; data are subject to change.  
Reporting through 06MAR2023**

**North Las Vegas zip codes include 89030, 89031, 89032, 89033, 89036, 89081, 89084, 89085, 89086, 89087.**