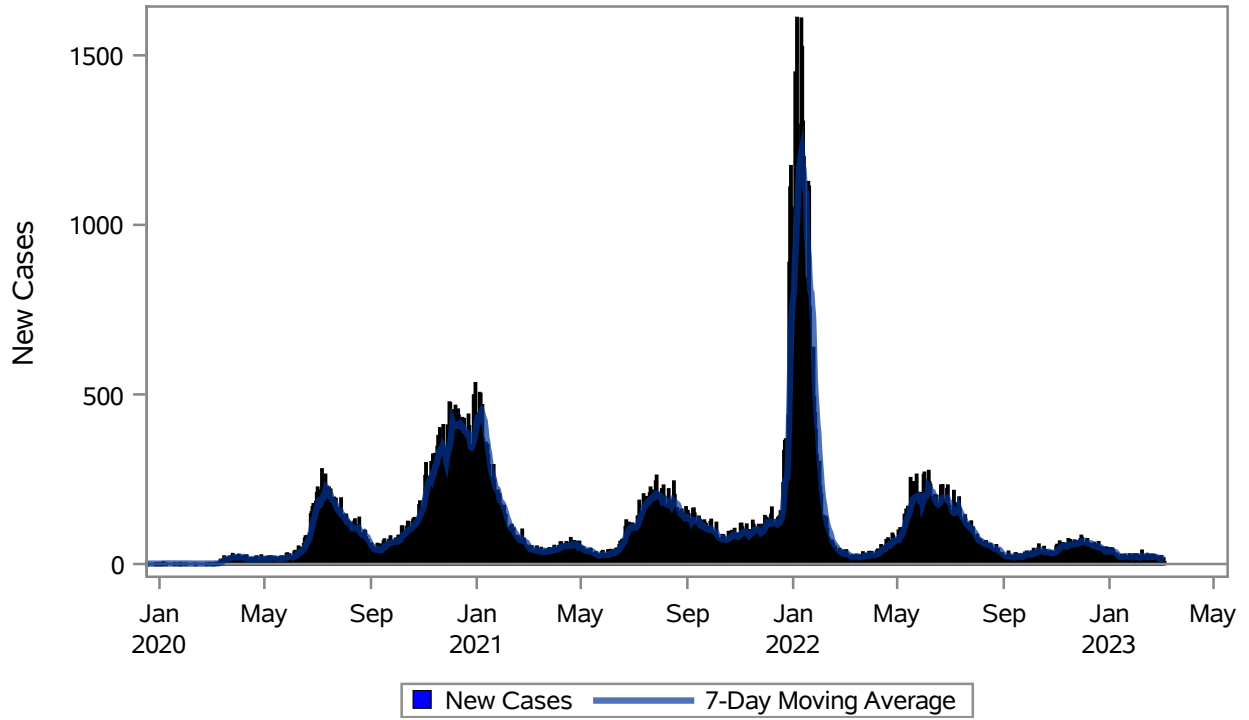


COVID19 Cases for Henderson, 7-Day Moving Average



Investigations are ongoing; data are subject to change.

Reporting through 06MAR2023

Henderson zip codes include 89002, 89011, 89012, 89014, 89015, 89044, 89052, 89074, 89119, 89120, 89122, 89123, 89124, 89183.

Table 1: New COVID19 Cases and 7-Day Moving Average in Henderson, Previous Two Weeks

Date (Daily)	New Cases	7-Day Moving Average
21FEB2023	25	22.43
22FEB2023	14	21.86
23FEB2023	16	21.14
24FEB2023	22	20.43
25FEB2023	12	18.86
26FEB2023	9	17.71
27FEB2023	15	16.14
28FEB2023	20	15.43
01MAR2023	23	16.71
02MAR2023	14	16.43
03MAR2023	12	15.00
04MAR2023	16	15.57

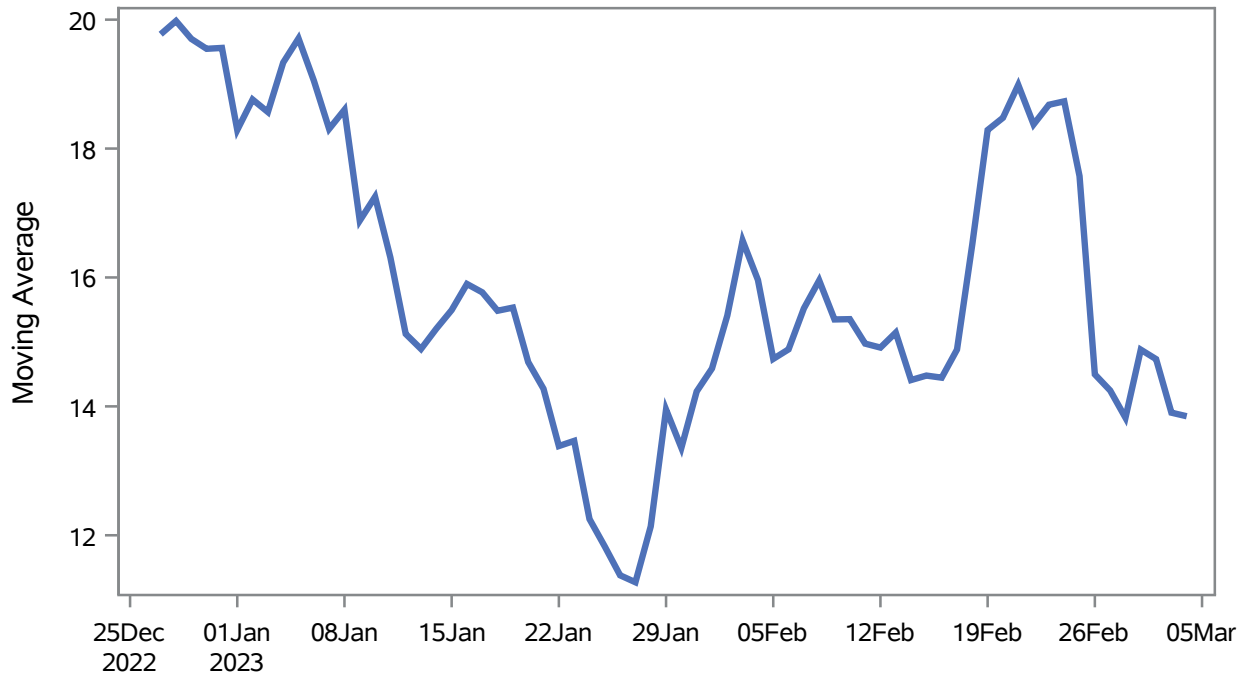
Note1: Event Date is calculated as follows based on completed information:
1) Disease onset date 2) Disease diagnosis date 3) Lab result collection date 4) Report date to SNHD.

Investigations are ongoing; data are subject to change.

Reporting through 06MAR2023

Henderson zip codes include 89002, 89011, 89012, 89014, 89015, 89044, 89052, 89074, 89119, 89120, 89122, 89123, 89124, 89183.

Percent of People Receiving COVID-19 Viral Tests Who Have Positive Results in Henderson



Investigations are ongoing; data are subject to change.

Reporting through 06MAR2023

Henderson zip codes include 89002, 89011, 89012, 89014, 89015, 89044, 89052, 89074, 89119, 89120, 89122, 89123, 89124, 89183.

Table 2: Percent of People Receiving COVID-19 Viral Tests Who Have Positive Results in Henderson

Collection Date	Positive	Negative	Equivocal	Total	% Positivity	7-Day Moving Average
18FEB2023	13	42	1	56	23.21	16.5
19FEB2023	18	46		64	28.13	18.3
20FEB2023	21	116		137	15.33	18.5
21FEB2023	28	125		153	18.30	19.0
22FEB2023	18	123		141	12.77	18.4
23FEB2023	23	146	1	170	13.53	18.7
24FEB2023	29	117		146	19.86	18.7
25FEB2023	16	90		106	15.09	17.6
26FEB2023	6	85		91	6.59	14.5
27FEB2023	22	140		162	13.58	14.2
28FEB2023	25	138		163	15.34	13.8
01MAR2023	25	99		124	20.16	14.9
02MAR2023	10	70		80	12.50	14.7
03MAR2023	17	104		121	14.05	13.9
04MAR2023	15	87		102	14.71	13.8

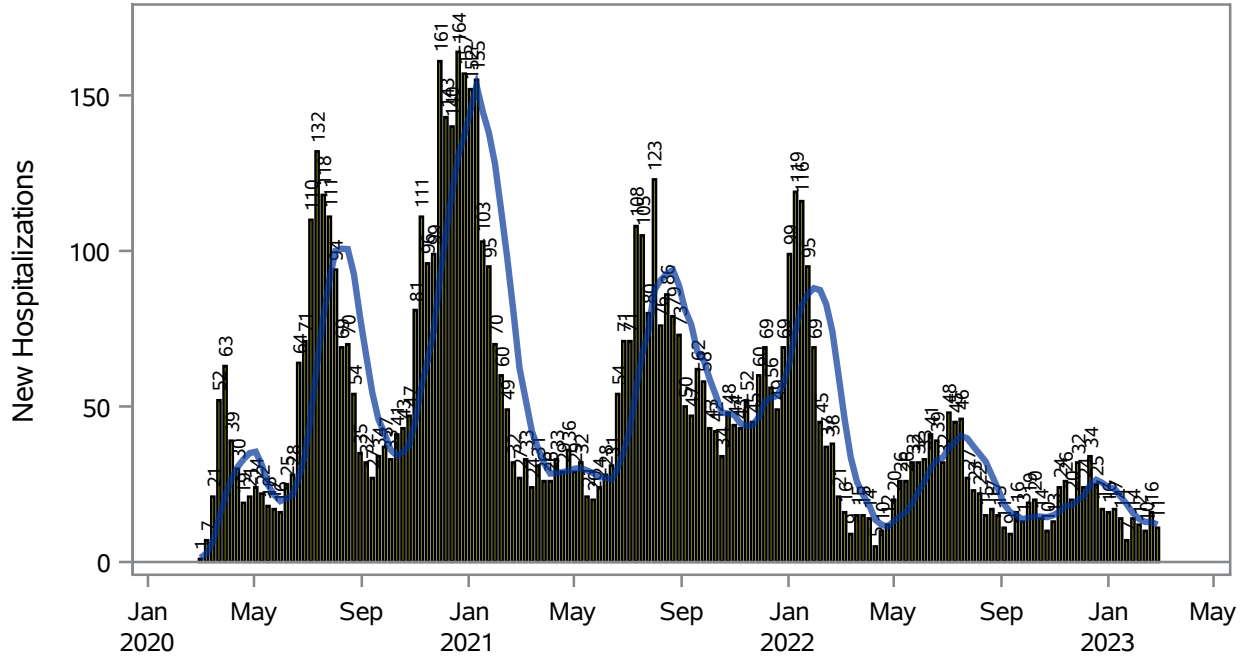
Note: Testing Data includes a 3 day delay

Investigations are ongoing; data are subject to change.

Reporting through 06MAR2023

Henderson zip codes include 89002, 89011, 89012, 89014, 89015, 89044, 89052, 89074, 89119, 89120, 89122, 89123, 89124, 89183.

COVID19 Hospitalizations for Henderson, 7-Day Moving Average



New Hospitalizations
 7-Day Moving Average

Investigations are ongoing; data are subject to change.

Reporting through 06MAR2023

Henderson zip codes include 89002, 89011, 89012, 89014, 89015, 89044, 89052, 89074, 89119, 89120, 89122, 89123, 89124, 89183.

Table 3: New COVID19-Related Hospitalizations and 7-Day Moving Average in Henderson, previous month

Week	Hospitalizations	7-Day Moving Average
05FEB2023	12	13.9
12FEB2023	10	12.9
19FEB2023	16	12.9
26FEB2023	11	12.0

Note1: Admission Date is calculated as follows based on completed information:
A) COVID19 Case is hospitalized B) COVID19 Case has a hospital admission date.

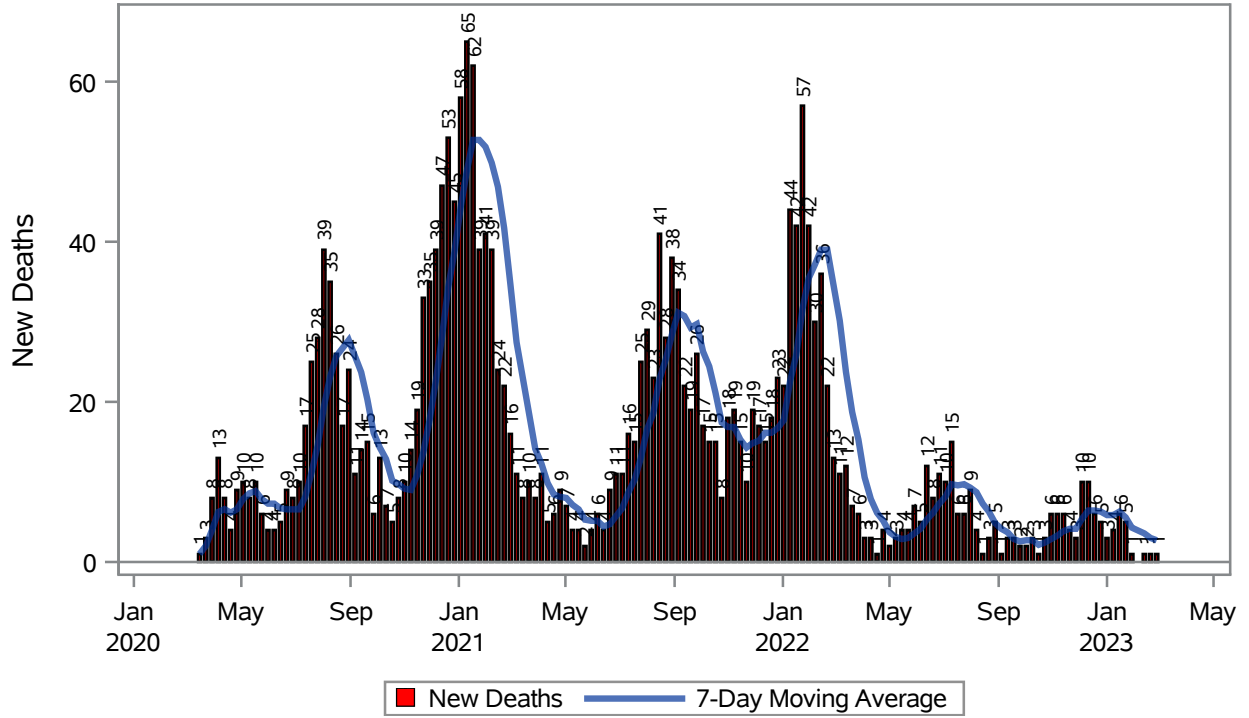
If admission date is missing, then the following is substituted temporarily, in order:
1) Disease onset date 2) Disease diagnosis date 3) Lab result collection date 4) Report date to SNHD.

Investigations are ongoing; data are subject to change.

Reporting through 06MAR2023

Henderson zip codes include 89002, 89011, 89012, 89014, 89015, 89044, 89052, 89074, 89119, 89120, 89122, 89123, 89124, 89183.

COVID19 Deaths for Henderson, 7-Day Moving Average



Investigations are ongoing; data are subject to change.

Reporting through 06MAR2023

Henderson zip codes include 89002, 89011, 89012, 89014, 89015, 89044, 89052, 89074, 89119, 89120, 89122, 89123, 89124, 89183.

Table 4: New COVID19-Related Deaths and 7-Day Moving Average in Henderson, Previous Month

Week	Deaths	7-Day Moving Average
12FEB2023	1	3.57
19FEB2023	1	3.00
26FEB2023	1	2.71

Note1: Date of Death is calculated as follows based on completed information:
A) COVID19 Case is reported as deceased B) COVID19 Case has a reported date of death.

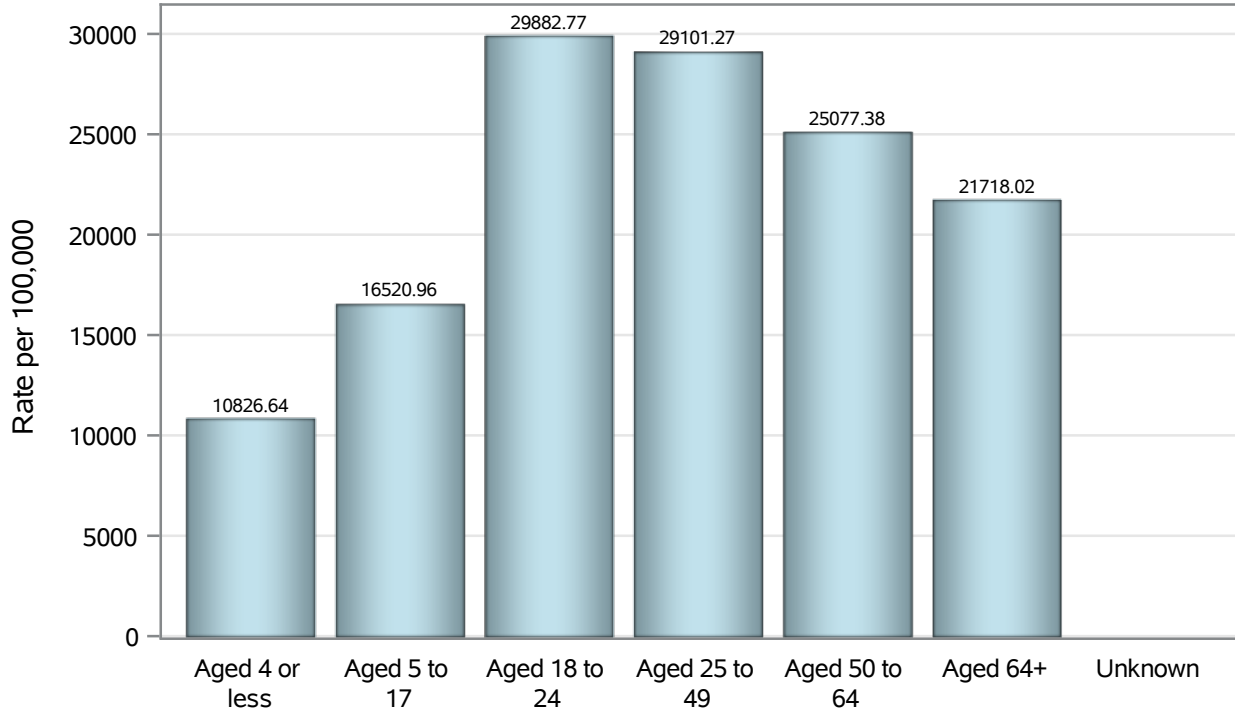
If date of death is missing, then the following is substituted temporarily, in order:
1) Disease onset date 2) Disease diagnosis date
3) Lab result collection date 4) Report date to SNHD.

Investigations are ongoing; data are subject to change.

Reporting through 06MAR2023

Henderson zip codes include 89002, 89011, 89012, 89014, 89015, 89044, 89052, 89074, 89119, 89120, 89122, 89123, 89124, 89183.

Case Age Rates in Henderson

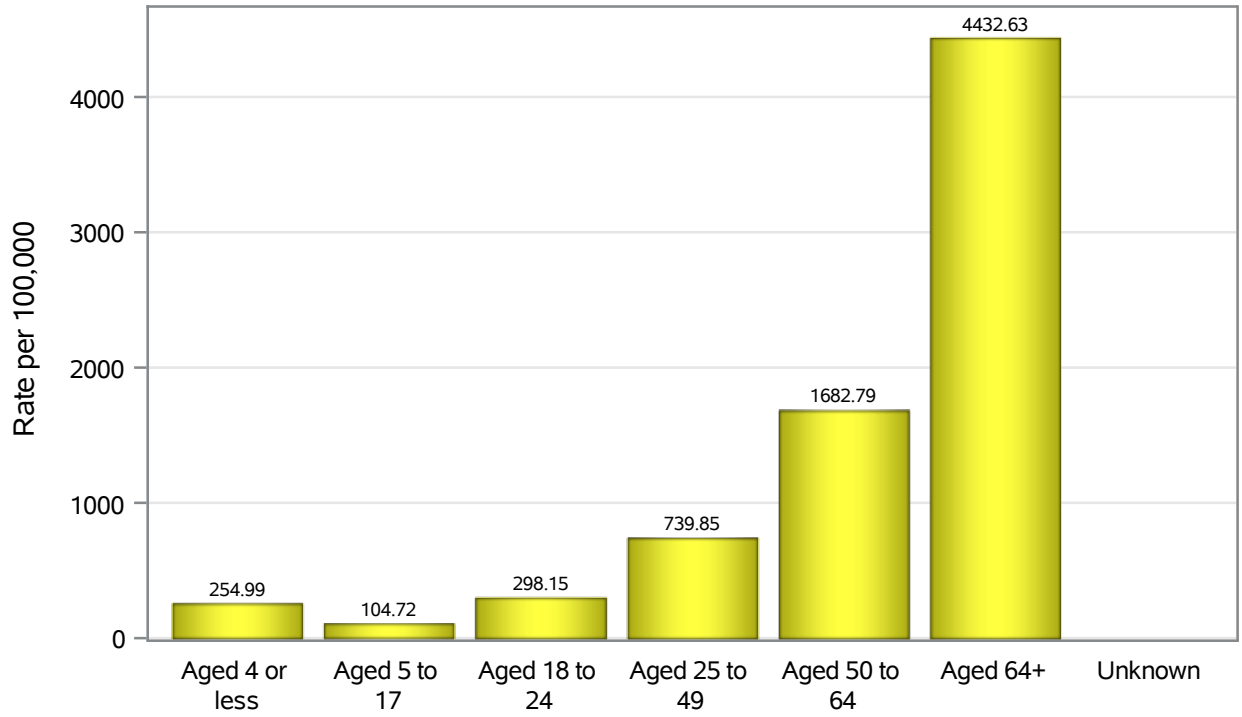


Investigations are ongoing; data are subject to change.

Reporting through 06MAR2023

Henderson zip codes include 89002, 89011, 89012, 89014, 89015, 89044, 89052, 89074, 89119, 89120, 89122, 89123, 89124, 89183.

Hospitalization Age Rates in Henderson

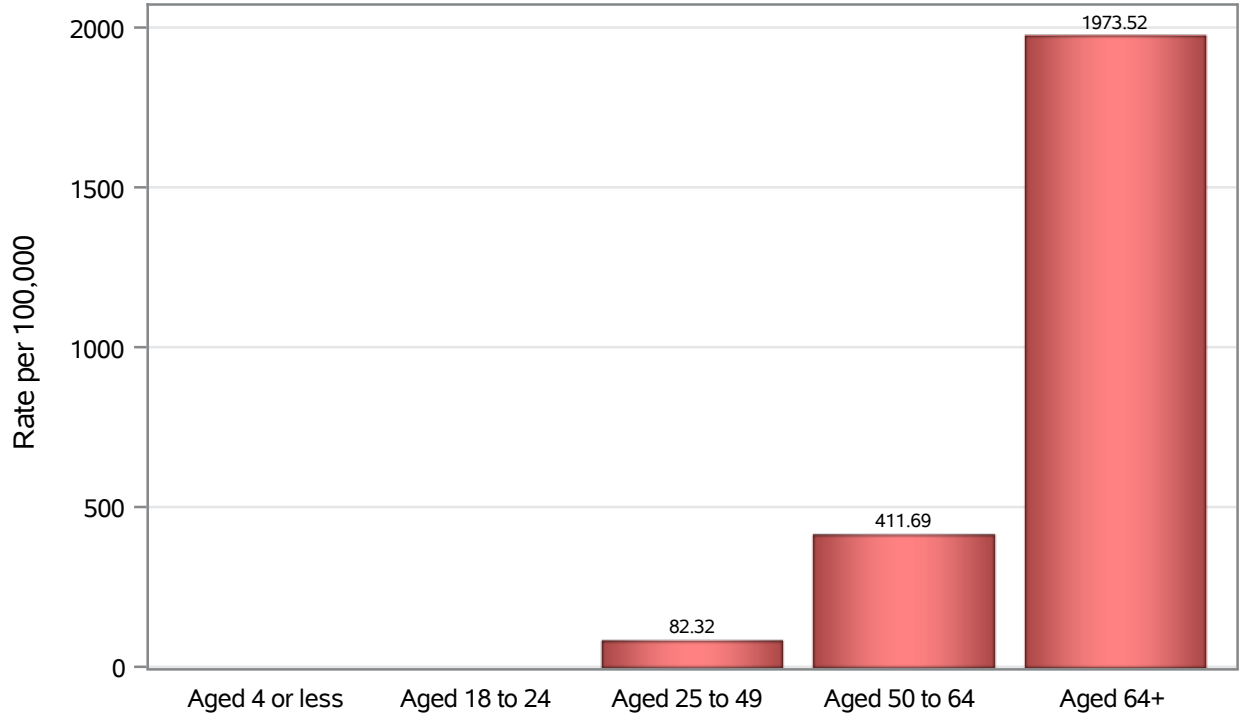


Investigations are ongoing; data are subject to change.

Reporting through 06MAR2023

Henderson zip codes include 89002, 89011, 89012, 89014, 89015, 89044, 89052, 89074, 89119, 89120, 89122, 89123, 89124, 89183.

Death Age Rates in Henderson



Investigations are ongoing; data are subject to change.

Reporting through 06MAR2023

Henderson zip codes include 89002, 89011, 89012, 89014, 89015, 89044, 89052, 89074, 89119, 89120, 89122, 89123, 89124, 89183.

Table 5: Age and COVID19 in Henderson

Case Status	Age Categories	N	%	Population	Rate per 100,000
Cases	Aged 4 or less	3142	2.4	29,021	10827
	Aged 5 to 17	13568	10.5	82,126	16521
	Aged 18 to 24	13230	10.3	44,273	29883
	Aged 25 to 49	54438	42.2	187064	29101
	Aged 50 to 64	25766	20.0	102746	25077
	Aged 64+	18785	14.6	86,495	21718
	Unknown	28	0.0	.	.
Hospitalizations	Aged 4 or less	74	1.0	29,021	254.99
	Aged 5 to 17	86	1.2	82,126	104.72
	Aged 18 to 24	132	1.8	44,273	298.15
	Aged 25 to 49	1384	19.1	187064	739.85
	Aged 50 to 64	1729	23.9	102746	1682.8
	Aged 64+	3834	53.0	86,495	4432.6
	Unknown	1	0.0	.	.
Deaths	Aged 4 or less	1	0.0	29,021	.
	Aged 18 to 24	4	0.2	44,273	.
	Aged 25 to 49	154	6.7	187064	82.32
	Aged 50 to 64	423	18.5	102746	411.69
	Aged 64+	1707	74.6	86,495	1973.5

Note1: Population data source for calculating rate estimates: U.S. Census Bureau, ACS 5-year estimate.

Note2: Rates for categories with fewer than 12 cases are suppressed due to high relative standard error.

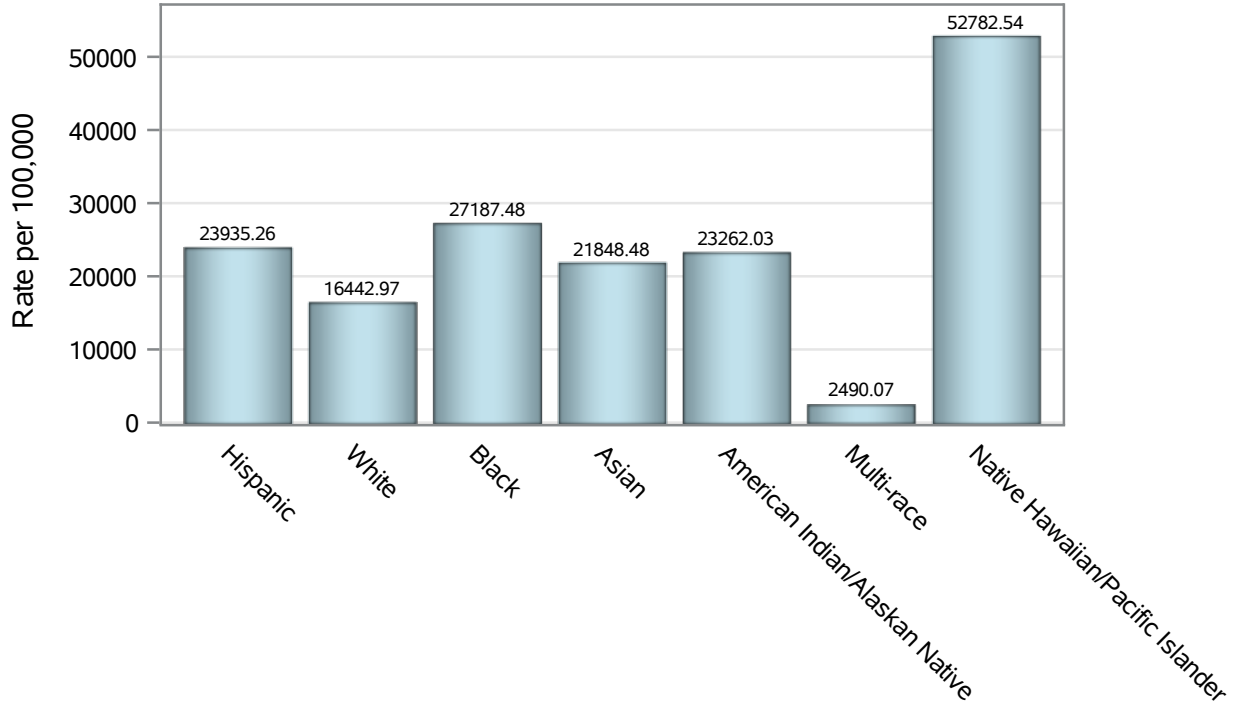
Note3: Hospitalizations are regardless of deceased status; Deaths are regardless of hospitalization status

Investigations are ongoing; data are subject to change.

Reporting through 06MAR2023

Henderson zip codes include 89002, 89011, 89012, 89014, 89015, 89044, 89052, 89074, 89119, 89120, 89122, 89123, 89124, 89183.

Case Race/Ethnicity Rates in Henderson

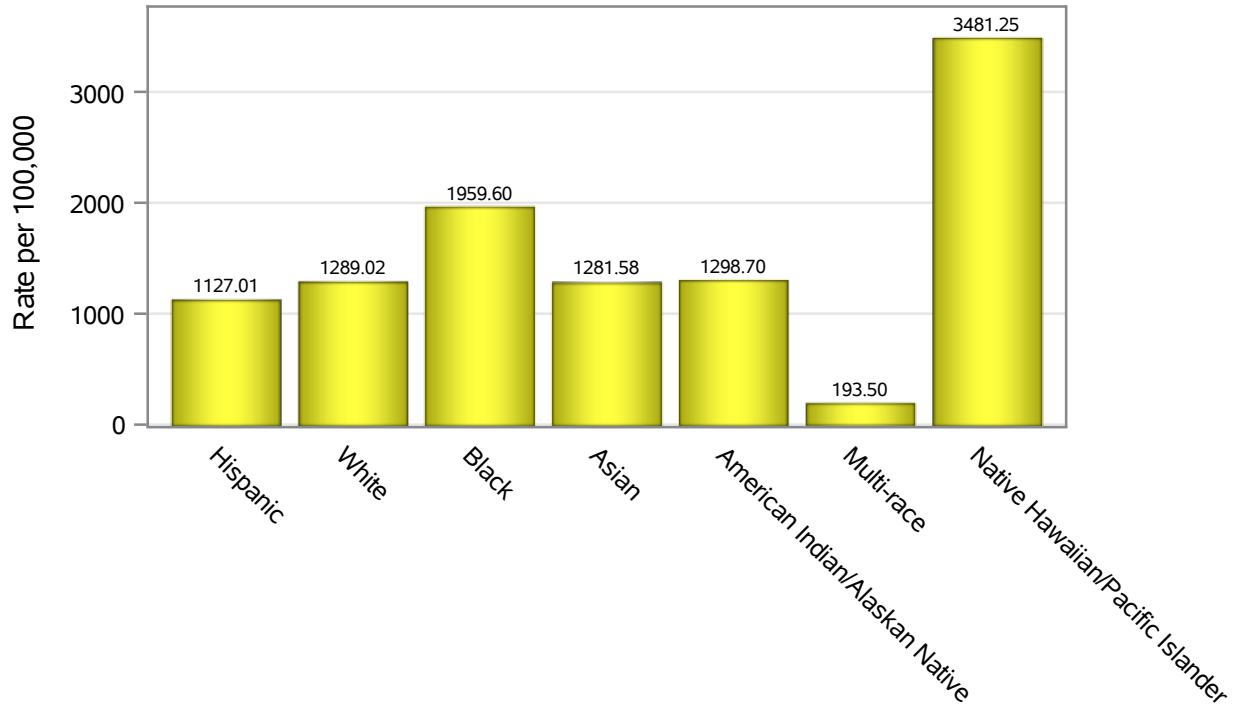


Investigations are ongoing; data are subject to change.

Reporting through 06MAR2023

Henderson zip codes include 89002, 89011, 89012, 89014, 89015, 89044, 89052, 89074, 89119, 89120, 89122, 89123, 89124, 89183.

Hospitalization Race/Ethnicity Rates in Henderson

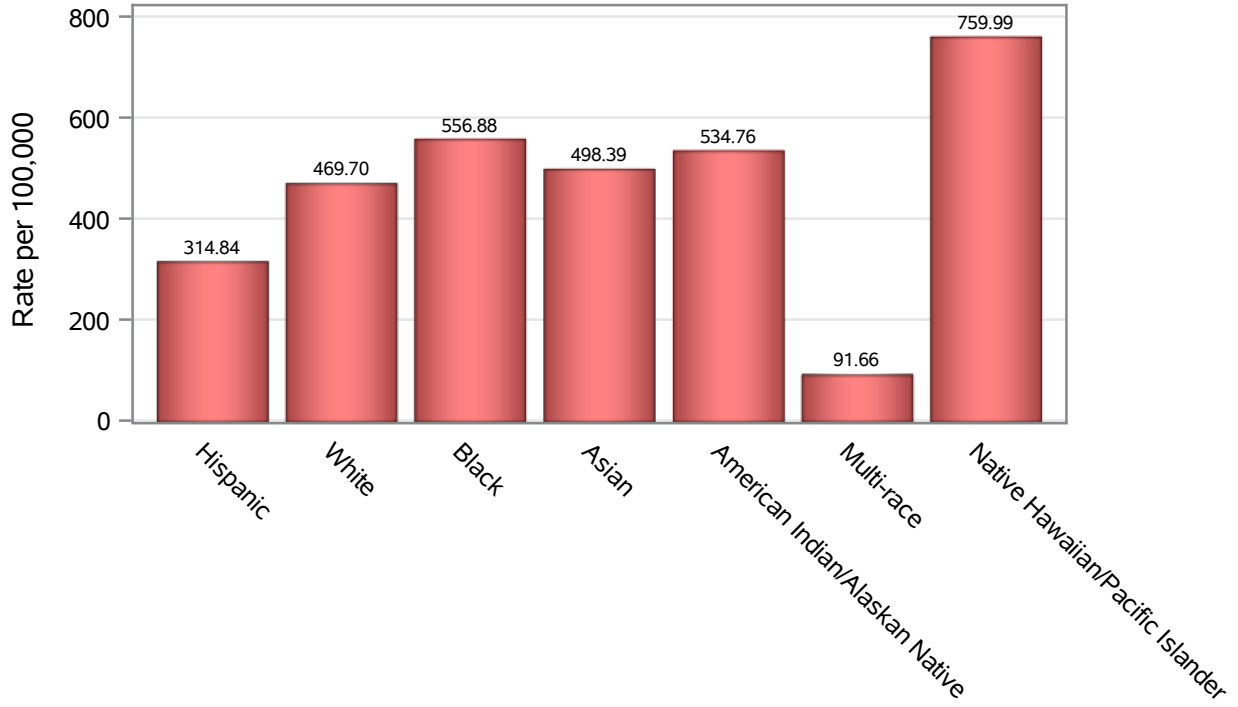


Investigations are ongoing; data are subject to change.

Reporting through 06MAR2023

Henderson zip codes include 89002, 89011, 89012, 89014, 89015, 89044, 89052, 89074, 89119, 89120, 89122, 89123, 89124, 89183.

Death Race/Ethnicity Rates in Henderson



Investigations are ongoing; data are subject to change.

Reporting through 06MAR2023

Henderson zip codes include 89002, 89011, 89012, 89014, 89015, 89044, 89052, 89074, 89119, 89120, 89122, 89123, 89124, 89183.

Table 6: Race/Ethnicity and COVID19 in Henderson

Case Status	Race Ethnicity Categories	N	%	Population	Rate per 100,000
Cases	Hispanic	29117	22.6	121649	23935
	White	47925	37.2	291462	16443
	Black	10350	8.0	38,069	27187
	Asian	11354	8.8	51,967	21848
	American Indian/Alaskan Native	609	0.5	2,618	23262
	Multi-race	489	0.4	19,638	2490.1
	Native Hawaiian/Pacific Islander	2153	1.7	4,079	52783
	Unknown	26960	20.9	.	.
Hospitalizations	Hispanic	1371	18.9	121649	1127.0
	White	3757	51.9	291462	1289.0
	Black	746	10.3	38,069	1959.6
	Asian	666	9.2	51,967	1281.6
	American Indian/Alaskan Native	34	0.5	2,618	1298.7
	Multi-race	38	0.5	19,638	193.50
	Native Hawaiian/Pacific Islander	142	2.0	4,079	3481.2
	Unknown	486	6.7	.	.
Deaths	Hispanic	383	16.7	121649	314.84
	White	1369	59.8	291462	469.70
	Black	212	9.3	38,069	556.88
	Asian	259	11.3	51,967	498.39
	American Indian/Alaskan Native	14	0.6	2,618	534.76
	Multi-race	18	0.8	19,638	91.66
	Native Hawaiian/Pacific Islander	31	1.4	4,079	759.99
	Unknown	3	0.1	.	.

Note1: Population data source for calculating rate estimates: U.S. Census Bureau, ACS 5-year estimate.

Note2: Rates for categories with fewer than 12 cases are suppressed due to high relative standard error.

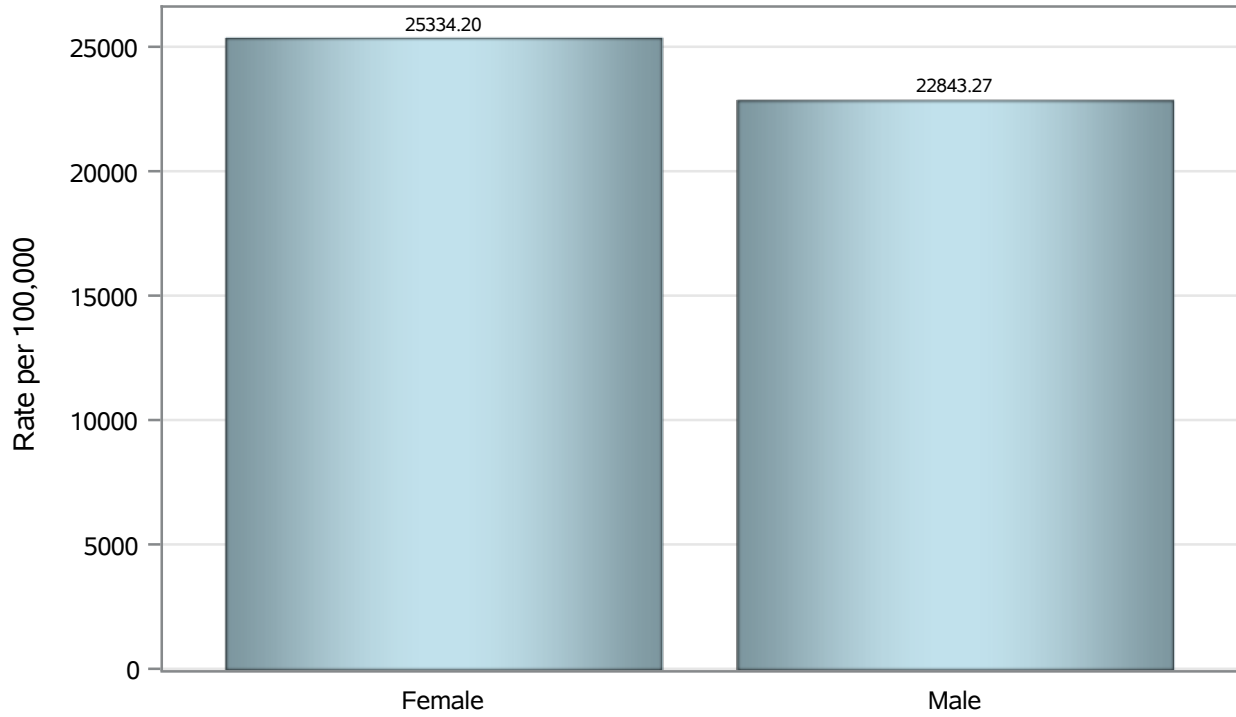
Note3: Hospitalizations are regardless of deceased status; Deaths are regardless of hospitalization status

Investigations are ongoing; data are subject to change.

Reporting through 06MAR2023

Henderson zip codes include 89002, 89011, 89012, 89014, 89015, 89044, 89052, 89074, 89119, 89120, 89122, 89123, 89124, 89183.

Case Birth Sex Rates in Henderson

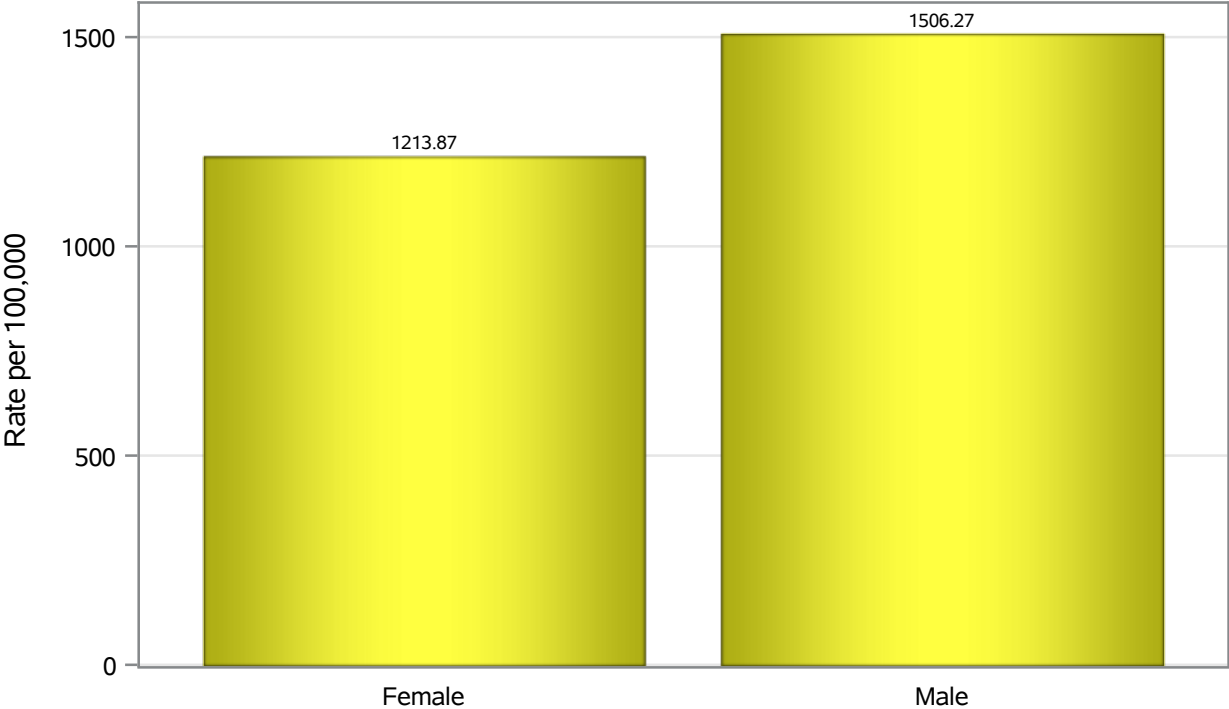


Investigations are ongoing; data are subject to change.

Reporting through 06MAR2023

Henderson zip codes include 89002, 89011, 89012, 89014, 89015, 89044, 89052, 89074, 89119, 89120, 89122, 89123, 89124, 89183.

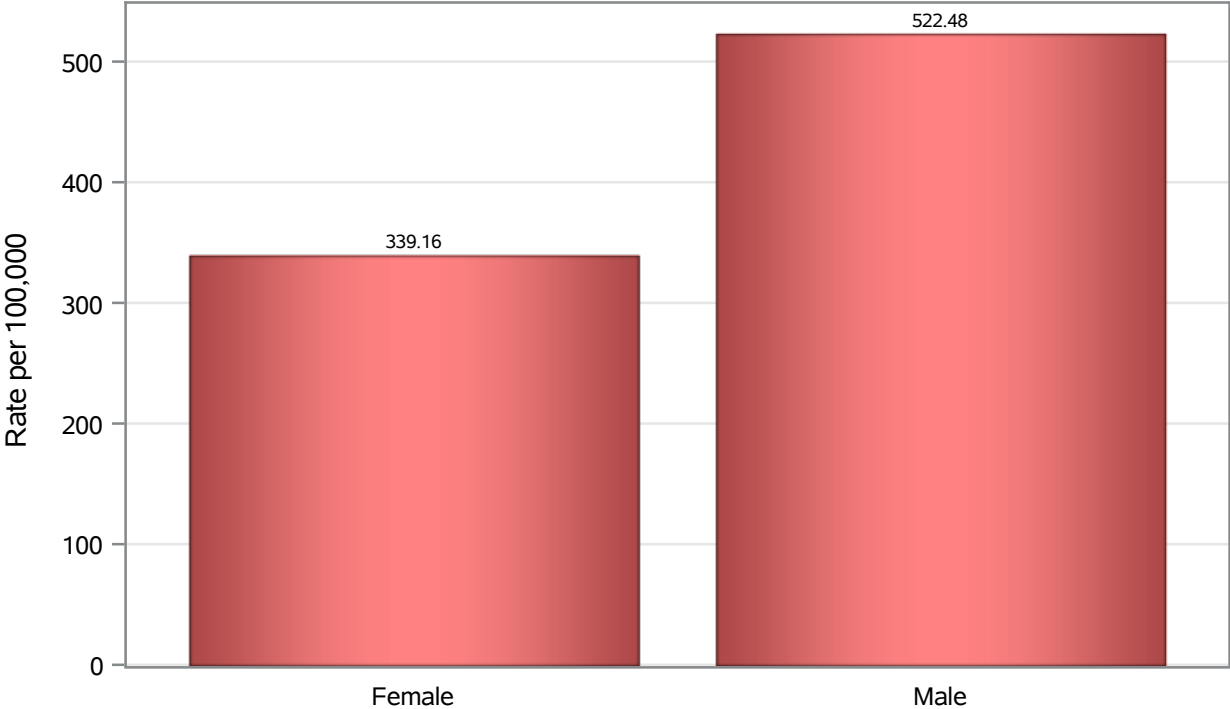
Hospitalization Birth Sex Rates in Henderson



Investigations are ongoing; data are subject to change.
Reporting through 06MAR2023

Henderson zip codes include 89002, 89011, 89012, 89014, 89015, 89044, 89052, 89074, 89119, 89120, 89122, 89123, 89124, 89183.

Death Birth Sex Rates in Henderson



Investigations are ongoing; data are subject to change.
Reporting through 06MAR2023

Henderson zip codes include 89002, 89011, 89012, 89014, 89015, 89044, 89052, 89074,
89119, 89120, 89122, 89123, 89124, 89183.

Table 7: Birth Sex and COVID19 in Henderson

Case Status	Birth Sex Categories	N	%	Population	Rate per 100,000
Cases	Female	67600	52.4	266833	25334
	Male	60510	46.9	264892	22843
	Unknown	847	0.7	.	.
Hospitalizations	Female	3239	44.7	266833	1213.9
	Male	3990	55.1	264892	1506.3
	Unknown	11	0.2	.	.
Deaths	Female	905	39.5	266833	339.16
	Male	1384	60.5	264892	522.48

Note1: Population data source for calculating rate estimates: U.S. Census Bureau, ACS 5-year estimate.

Note2: Rates for categories with fewer than 12 cases are suppressed due to high relative standard error.

Note3: Hospitalizations are regardless of deceased status; Deaths are regardless of hospitalization status

Investigations are ongoing; data are subject to change.

Reporting through 06MAR2023

Henderson zip codes include 89002, 89011, 89012, 89014, 89015, 89044, 89052, 89074, 89119, 89120, 89122, 89123, 89124, 89183.