

COVID-19 Trends

Clark County, Nevada

Document creation date: June 29, 2023

- General notes: This report uses surveillance data collected by the Southern Nevada Health District. Due to delays related to laboratory processing, reporting, and case investigations, data from the most recent days are less complete than data from older time points. For this reason, as of June 10, 2020 this report will not display data from the previous three days prior to the date that the report was created. As many case investigations are ongoing, all data presented in this report are considered preliminary and subject to change. Data regarding cases, hospitalizations, deaths, and labs were last updated June 29, 2023 at 12:00 AM, and data is reported up through June 25, 2023.
- Cases: Symptom onset date was used for aggregating cases. If symptom onset date was missing, the following dates were substituted in this order: diagnosis date, lab collection date, report date (date case was reported to SNHD), event creation date (date case was entered into EpiTrax, SNHD's surveillance system).
- Hospitalizations: Admission date reported the the Nevada Hospital Association was used for aggregating hospitalizations. One person could have more than one admissions.
- Deaths: Date of death was used for aggregating deaths. If date of death was missing, report date was used.
- For the "7-Day Average of Daily New Cases per 100K, by Age Group (Years)" graph and table, the population data source for calculating rate estimates was from Nevada State Demographer "2019 ASRHO Estimates and Projections Summary 2000 to 2038", 2020 projection, vintage 2019. Rates for individual age categories may be based on small numbers, which may give unstable estimates.
- All graphs in this report show data from approximately 60 days prior to the date of the report.
- All tables show data from the last 14 days before the current date, with the exception of the "Percent Change in Weekly Totals from Previous Week", which displays data from the previous eight completed weeks.
- For the "Percent of People Receiving COVID-19 PCR Tests Who Have Positive Results" graph, one person who has multiple specimens collected in one day is only reported once. If any test of that person is positive, that person counts as a positive result. If all tests of that individual are negative, that person counts as a negative result. Laboratory tests were included if they were a test assessing for the presence of SARS-CoV-2 viral RNA, for example PCR tests. Antibody and antigen tests were excluded.

COVID-19 Cases

Clark County, NV

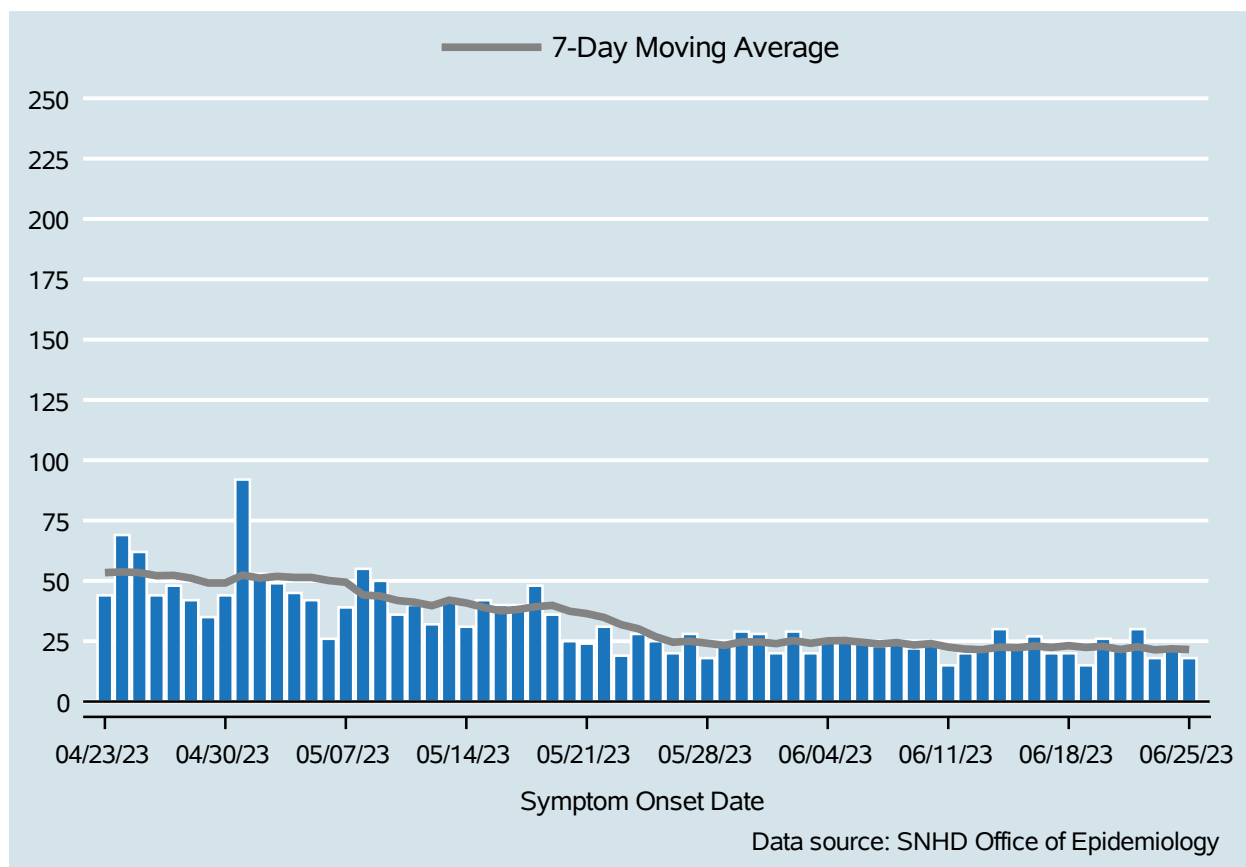


Table 1: COVID-19 Cases per Day, Clark County, NV

Date	Cases Per Day	7-Day Moving Average
Jun 12	20	21.7
Jun 13	23	21.6
Jun 14	30	22.6
Jun 15	22	22.3
Jun 16	27	23.0
Jun 17	20	22.4
Jun 18	20	23.1
Jun 19	15	22.4
Jun 20	26	22.9
Jun 21	21	21.6
Jun 22	30	22.7
Jun 23	18	21.4
Jun 24	23	21.9
Jun 25	18	21.6

COVID-19 Hospitalizations

Clark County, NV

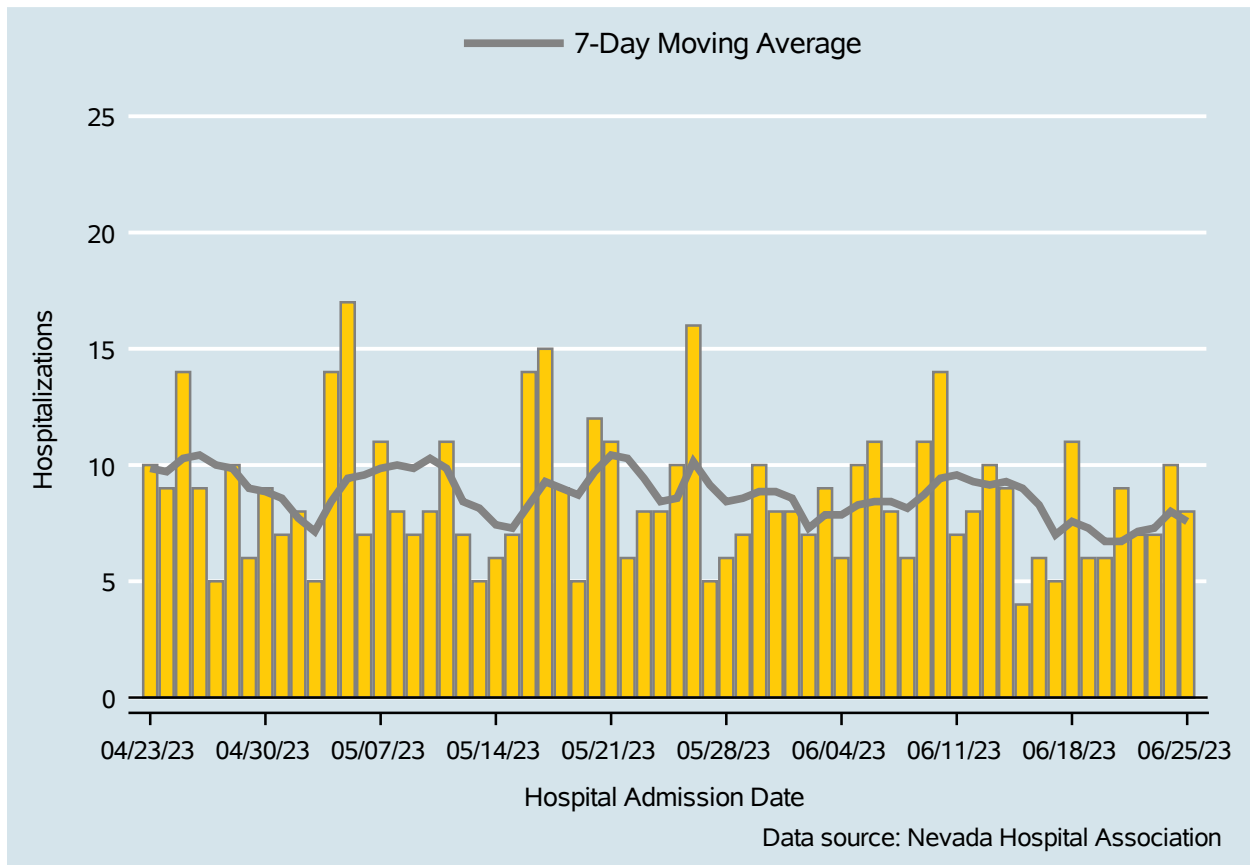


Table 2: COVID-19 Hospitalizations per Day, Clark County, NV

Date	Hospitalizations Per Day	7-Day Moving Average
Jun 12	8	9.3
Jun 13	10	9.1
Jun 14	9	9.3
Jun 15	4	9.0
Jun 16	6	8.3
Jun 17	5	7.0
Jun 18	11	7.6
Jun 19	6	7.3
Jun 20	6	6.7
Jun 21	9	6.7
Jun 22	7	7.1
Jun 23	7	7.3
Jun 24	10	8.0
Jun 25	8	7.6

Bed Occupancy of COVID-19 Hospitalizations

Clark County, NV

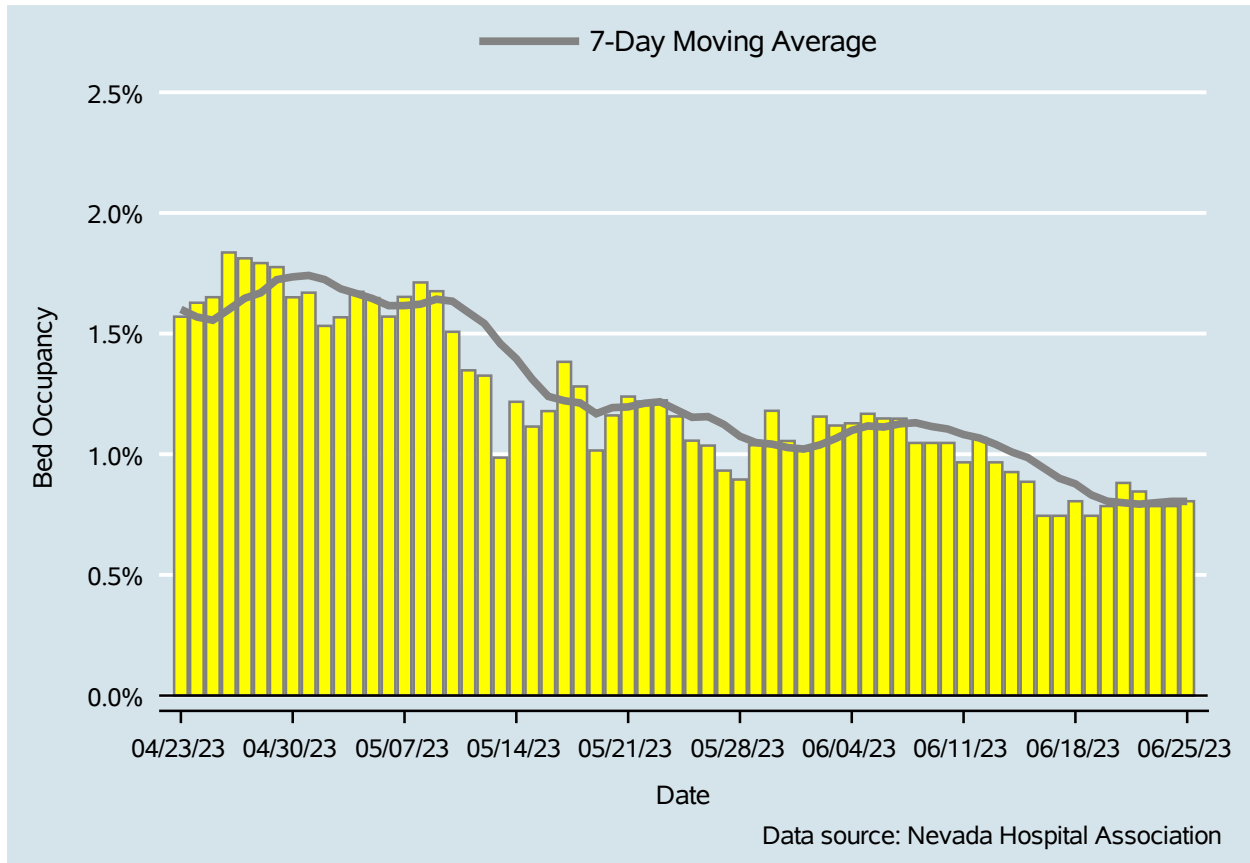


Table 3: Percent of Bed Occupancy per Day, Clark County, NV

Date	Bed Occupancy Per Day	7-Day Moving Average
Jun 12	1.07%	1.07%
Jun 13	0.97%	1.04%
Jun 14	0.93%	1.01%
Jun 15	0.89%	0.99%
Jun 16	0.74%	0.94%
Jun 17	0.74%	0.90%
Jun 18	0.81%	0.88%
Jun 19	0.74%	0.83%
Jun 20	0.79%	0.81%
Jun 21	0.88%	0.80%
Jun 22	0.85%	0.79%
Jun 23	0.79%	0.80%
Jun 24	0.79%	0.80%
Jun 25	0.81%	0.80%

COVID-19 Deaths

Clark County, NV

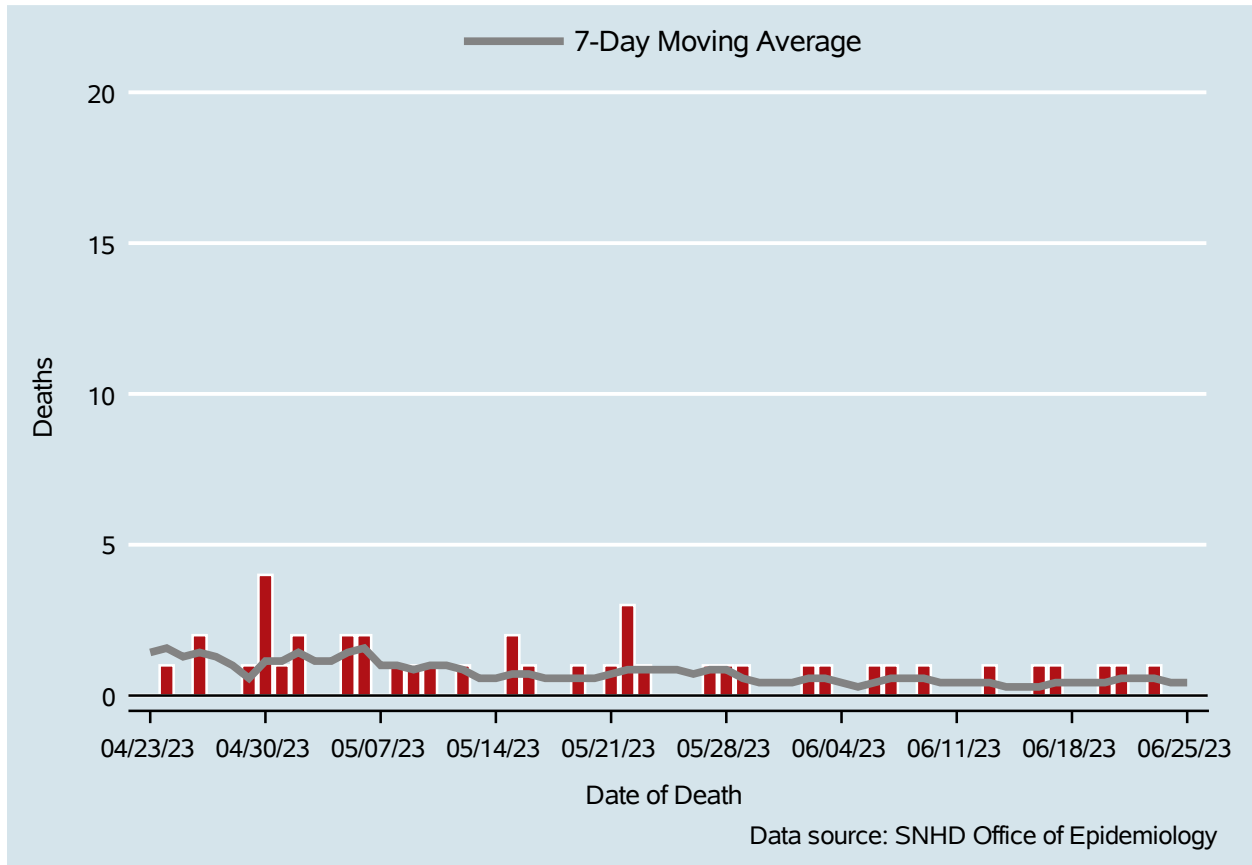


Table 4: COVID-19 Deaths per Day, Clark County, NV

Date	Deaths Per Day	7-Day Moving Average
Jun 12	0	0.4
Jun 13	1	0.4
Jun 14	0	0.3
Jun 15	0	0.3
Jun 16	1	0.3
Jun 17	1	0.4
Jun 18	0	0.4
Jun 19	0	0.4
Jun 20	1	0.4
Jun 21	1	0.6
Jun 22	0	0.6
Jun 23	1	0.6
Jun 24	0	0.4
Jun 25	0	0.4

7-Day Average of Daily New Cases per 100K, by Age Group (Years)

Clark County, NV

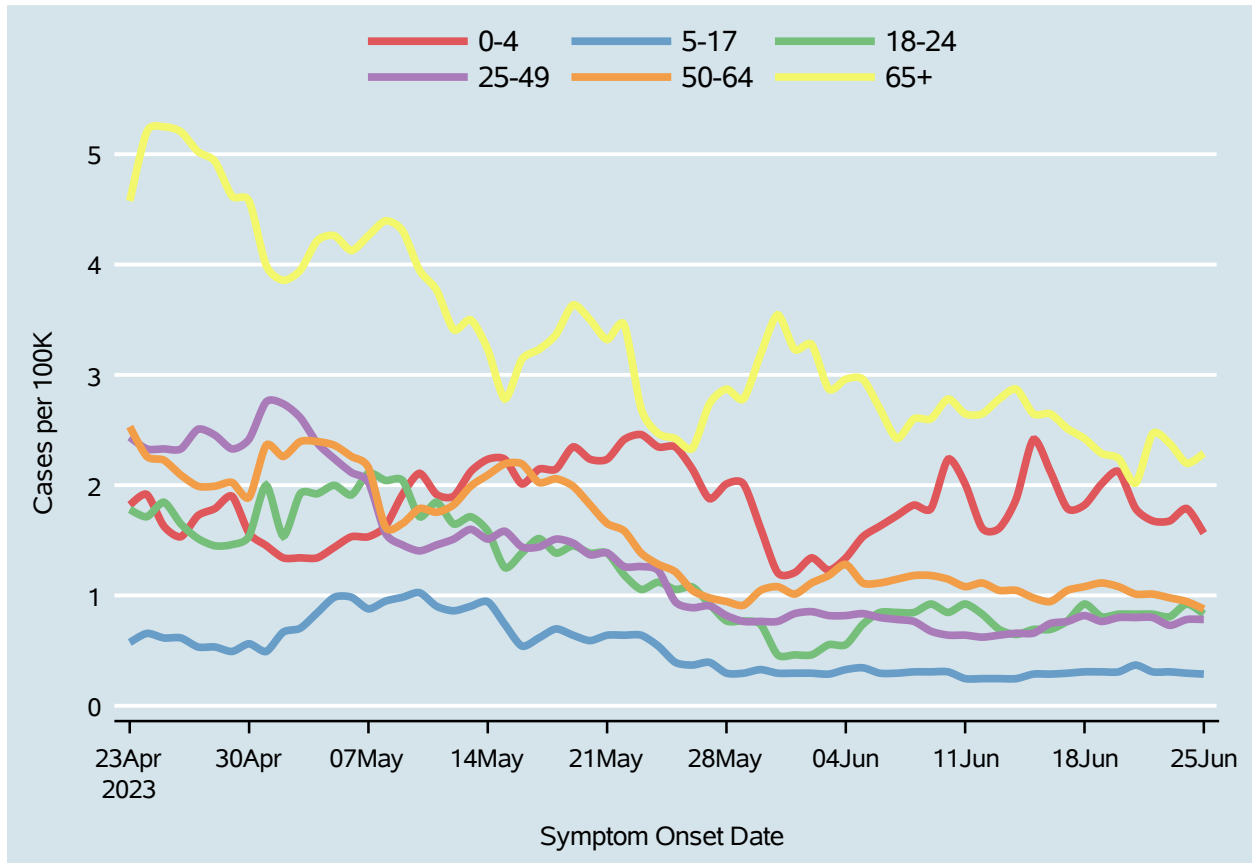
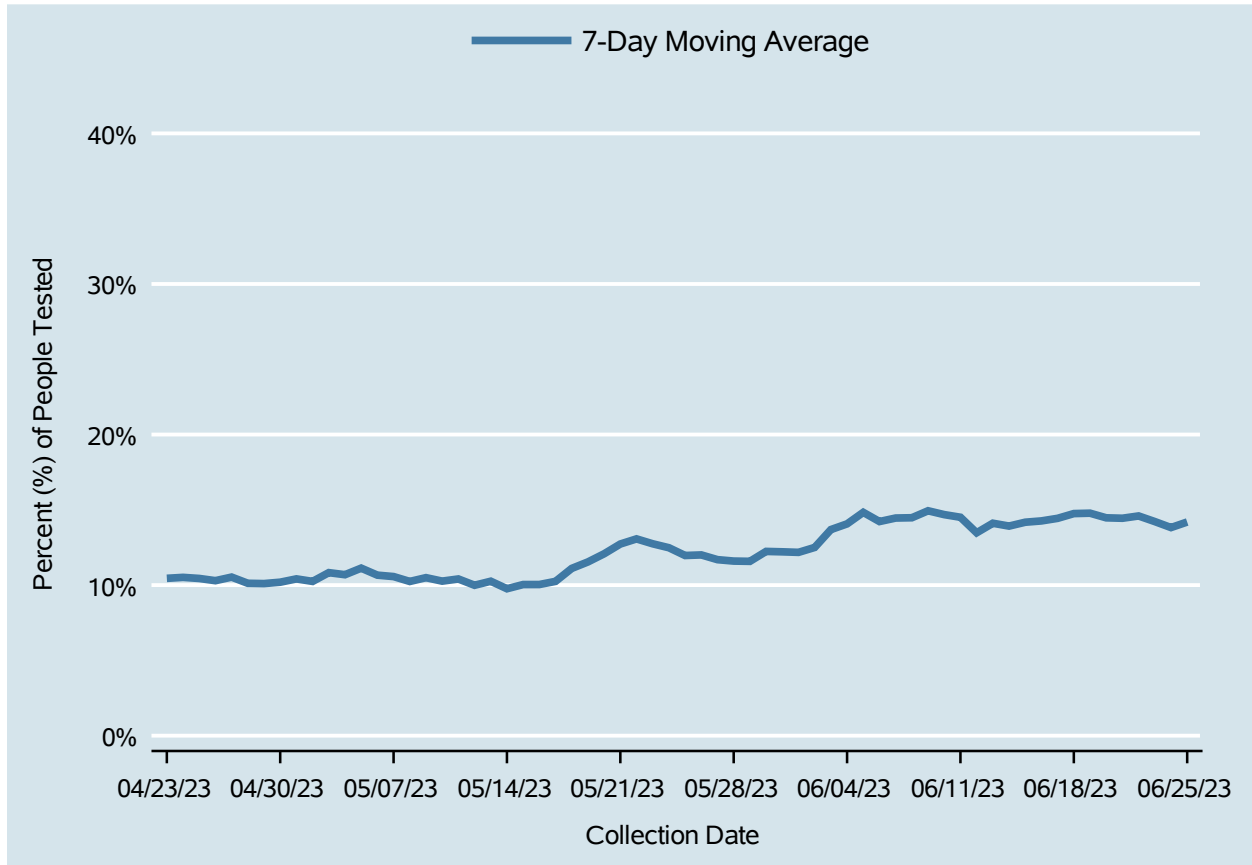


Table 5: 7-Day Average of Daily New Cases per 100K, by Age Group (Years)

Date	0-4	5-17	18-24	25-49	50-64	65+
Jun 12	1.6	0.2	0.8	0.6	1.1	2.6
Jun 13	1.6	0.2	0.7	0.6	1.0	2.8
Jun 14	1.9	0.2	0.6	0.7	1.0	2.9
Jun 15	2.4	0.3	0.7	0.7	1.0	2.6
Jun 16	2.1	0.3	0.7	0.7	0.9	2.6
Jun 17	1.8	0.3	0.8	0.8	1.0	2.5
Jun 18	1.8	0.3	0.9	0.8	1.1	2.4
Jun 19	2.0	0.3	0.8	0.8	1.1	2.3
Jun 20	2.1	0.3	0.8	0.8	1.1	2.2
Jun 21	1.8	0.4	0.8	0.8	1.0	2.0
Jun 22	1.7	0.3	0.8	0.8	1.0	2.5
Jun 23	1.7	0.3	0.8	0.7	1.0	2.4
Jun 24	1.8	0.3	0.9	0.8	0.9	2.2
Jun 25	1.6	0.3	0.8	0.8	0.9	2.3

Percent of People Receiving COVID-19 PCR Tests Who Have Positive Results

Clark County, NV



Report prepared by: Ying Zhang, PhD, MPH (Office of Epidemiology) and Lei Zhang, MS (Office of Informatics)