

COVID-19 Trends, Clark County, NV

(FOR OFFICIAL USE ONLY)

Document creation date: June 22, 2023

Technical Notes:

- **General notes:** This report uses surveillance data collected by the Southern Nevada Health District. Due to delays related to laboratory processing, reporting, and case investigations, data from the most recent days are less complete than data from older time points. For this reason, as of June 10, 2020 this report will not display data from the previous three days prior to the date that the report was created. As many case investigations are ongoing, all data presented in this report are considered preliminary and subject to change. Data regarding cases, hospitalizations, deaths, and labs were last updated June 22, 2023 at 12:00 AM, and data is reported up through June 18, 2023.
- **Cases:** Symptom onset date was used for aggregating cases. If symptom onset date was missing, the following dates were substituted in this order: diagnosis date, lab collection date, report date (date case was reported to SNHD), event creation date (date case was entered into EpiTrax, SNHD's surveillance system).
- **Hospitalizations:** Admission date reported the the Nevada Hospital Association was used for aggregating hospitalizations. One person could have more than one admissions.
- **Hospital admission levels** were based on 7-day total of new COVID-19 hospital admissions per 100,000 population: high means greater than or equal to 20.0 per 100,000, medium means less than 20.0 but greater than or equal to 10.0 per 100,000, low means less than 10.0 per 100,000.
- **Deaths:** Date of death was used for aggregating deaths. If date of death was missing, report date was used.
- The population data source for calculating rate estimates was from Nevada State Demographer "2019 ASRHO Estimates and Projections Summary 2000 to 2038", 2020 projection, vintage 2019. Rates for individual age categories may be based on small numbers, which may give unstable estimates.

- The "Percent Change in Weekly Totals from Previous Week" graph and table display the percentage change in weekly totals of cases, hospitalizations, and deaths from the previous weekly totals. For the purpose of calculating weekly totals, weeks start on Monday and end on Sunday. A particular week will only be displayed in the report if data of every day in that week has been released. For example, if the report was created on June 10, 2020, the last day of reported data will be from Saturday June 6. Since data is only available for six of the seven days in that particular week, that week will not be included in the report.
- All graphs in this report show data from approximately 60 days prior to the date of the report.
- All tables show data from the last 14 days before the current date, with the exception of the "Percent Change in Weekly Totals from Previous Week", which displays data from the previous eight completed weeks.
- For the "Percent of People Receiving COVID-19 PCR Tests Who Have Positive Results" graph, one person who has multiple specimens collected in one day is only reported once. If any test of that person is positive, that person counts as a positive result. If all tests of that individual are negative, that person counts as a negative result. Laboratory tests were included if they were a test assessing for the presence of SARS-CoV-2 viral RNA, for example PCR tests. Antibody and antigen tests were excluded.
- For the "Percent of Total COVID-19 PCR Tests With Positive Results" graph, the numerator is the total number of positive tests, and the denominator is the total number of tests performed. Multiple tests are possible for each individual per day if more than one sample was collected. Laboratory tests were included if they were a test assessing for the presence of SARS-CoV-2 viral RNA, for example PCR tests. Antibody and antigen tests were excluded. Laboratory test results were included if they were reported electronically by laboratories or providers. Tests were excluded if entered by SNHD surveillance staff manually, as surveillance staff do not typically enter negative results, and this would bias the results of the graph in the positive direction.
- Syndromic Surveillance: Data source is the Electronic Surveillance System for the Early Notification of Community-based Epidemics (ESSENCE) Nevada. These data capture the Percent of emergency department visits that could presumptively be related to COVID-19 at non-federal acute care hospitals in Clark County. This includes visits where 1) the chief complaint of the patient was a symptom of coronavirus-like illness (i.e., fever and chills, cough, shortness of breath); or 2) a patient was diagnosed with symptoms of coronavirus-like illness; or 3) a patient was diagnosed with COVID-19. Visits among patients who were diagnosed with Influenza were excluded.

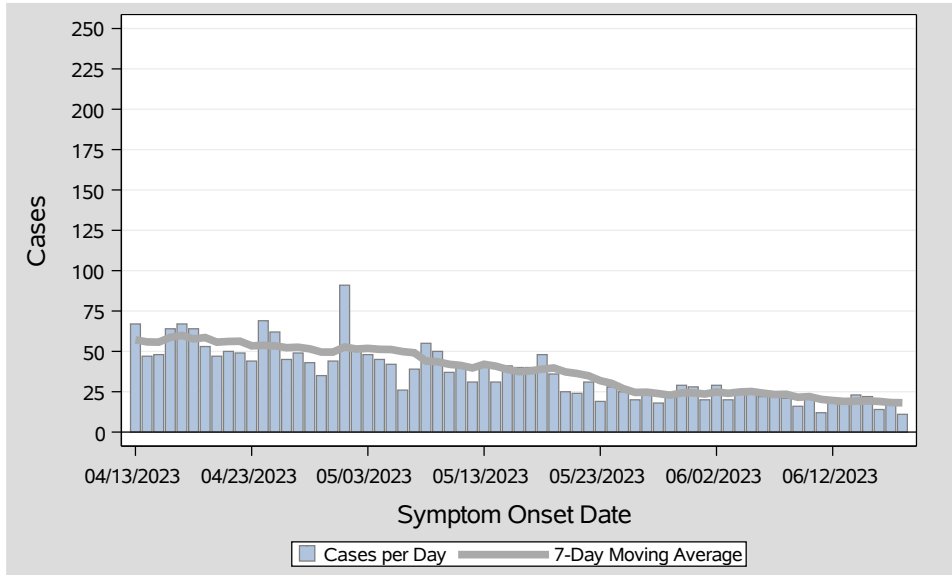


Table 1: COVID-19 Cases per Day, Clark County, NV

Date	Cases Per Day	7-Day Moving Average
Jun 05	26	25.1
Jun 06	22	24.1
Jun 07	22	23.3
Jun 08	21	23.4
Jun 09	16	21.6
Jun 10	23	22.0
Jun 11	12	20.3
Jun 12	21	19.6
Jun 13	18	19.0
Jun 14	23	19.1
Jun 15	22	19.3
Jun 16	14	19.0
Jun 17	18	18.3
Jun 18	11	18.1

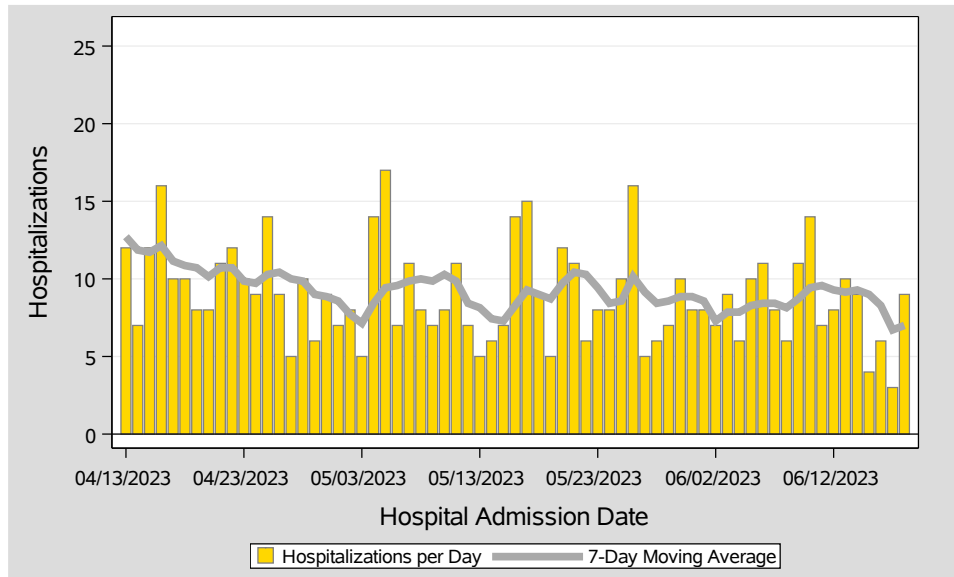


Table 2: COVID-19 Hospitalizations per Day, Clark County, NV

Date	Hospitalizations Per Day	7-Day Moving Average	7-Day Total Hospitalizations per 100K	Hospital Admission Level
Jun 05	10	8.3	2.50	Low
Jun 06	11	8.4	2.55	Low
Jun 07	8	8.4	2.55	Low
Jun 08	6	8.1	2.46	Low
Jun 09	11	8.7	2.63	Low
Jun 10	14	9.4	2.85	Low
Jun 11	7	9.6	2.89	Low
Jun 12	8	9.3	2.80	Low
Jun 13	10	9.1	2.76	Low
Jun 14	9	9.3	2.80	Low
Jun 15	4	9.0	2.72	Low
Jun 16	6	8.3	2.50	Low
Jun 17	3	6.7	2.03	Low
Jun 18	9	7.0	2.11	Low

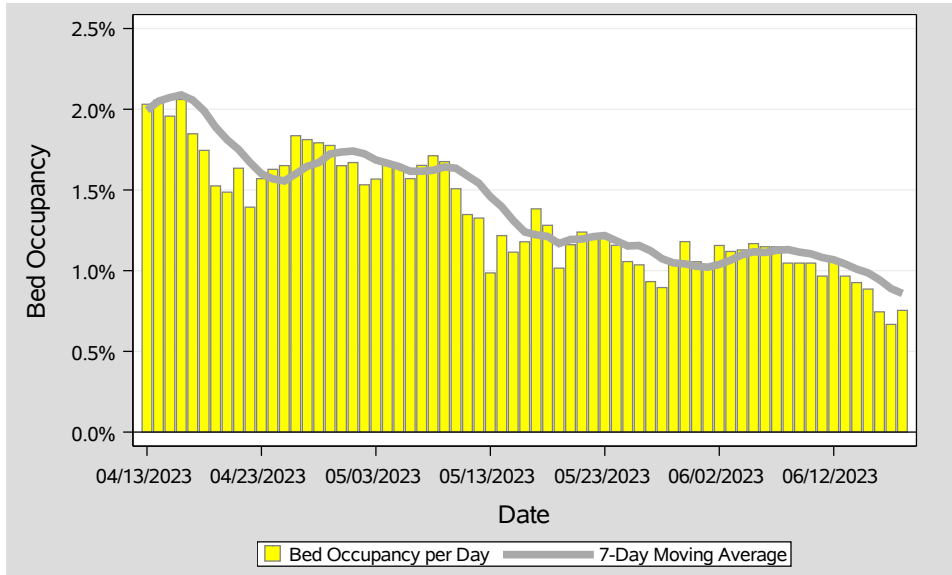


Table 3: Percent of Bed Occupancy per Day, Clark County, NV

Date	Bed Occupancy Per Day	7-Day Moving Average
Jun 05	1.17%	1.12%
Jun 06	1.15%	1.11%
Jun 07	1.15%	1.13%
Jun 08	1.05%	1.13%
Jun 09	1.05%	1.11%
Jun 10	1.05%	1.10%
Jun 11	0.97%	1.08%
Jun 12	1.07%	1.07%
Jun 13	0.97%	1.04%
Jun 14	0.93%	1.01%
Jun 15	0.89%	0.99%
Jun 16	0.74%	0.94%
Jun 17	0.67%	0.89%
Jun 18	0.75%	0.86%

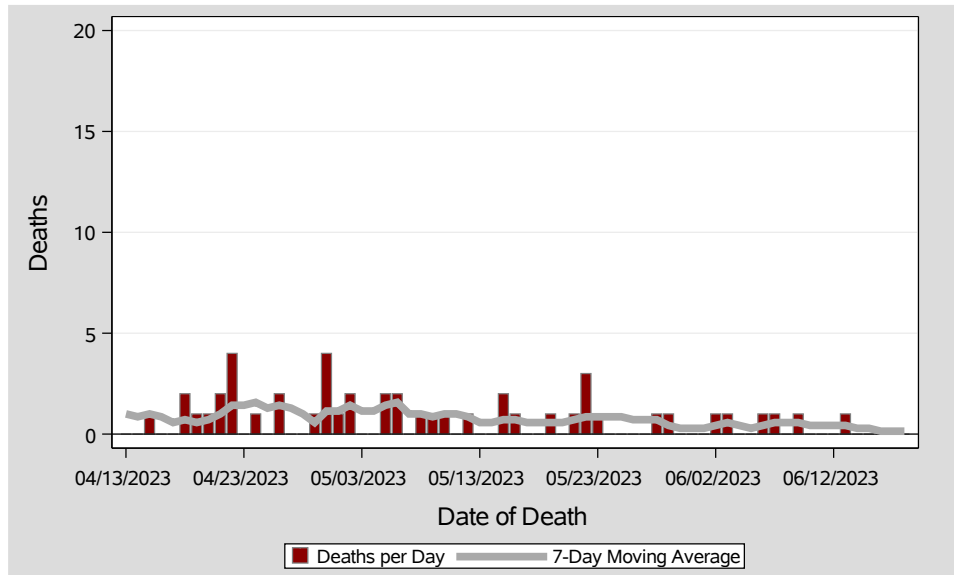


Table 4: COVID-19 Deaths per Day, Clark County, NV

Date	Deaths Per Day	7-Day Moving Average
Jun 05	0	0.3
Jun 06	1	0.4
Jun 07	1	0.6
Jun 08	0	0.6
Jun 09	1	0.6
Jun 10	0	0.4
Jun 11	0	0.4
Jun 12	0	0.4
Jun 13	1	0.4
Jun 14	0	0.3
Jun 15	0	0.3
Jun 16	0	0.1
Jun 17	0	0.1
Jun 18	0	0.1

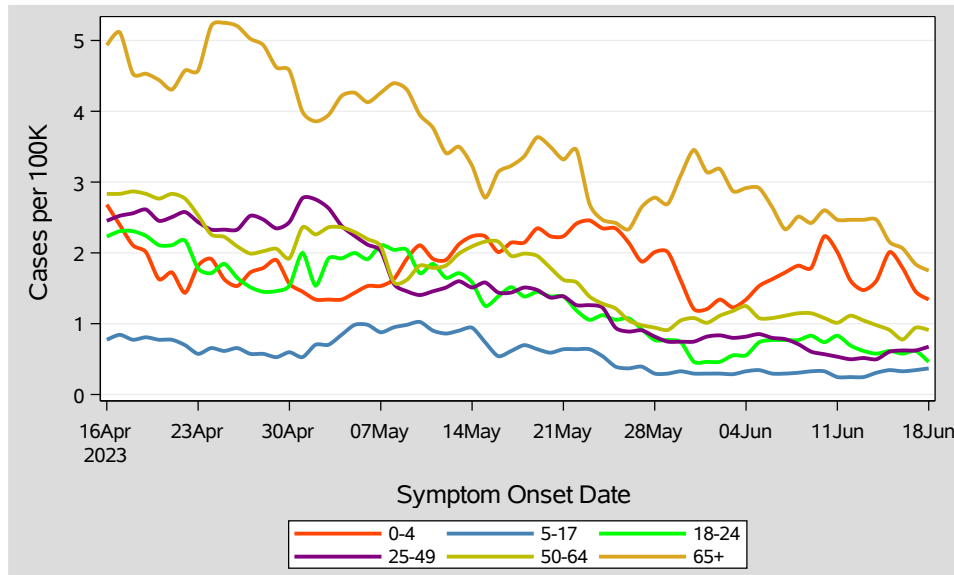


Table 5: 7-Day Average of Daily New Cases per 100K, by Age Group (Years)

Date	0-4	5-17	18-24	25-49	50-64	65+
Jun 05	1.5	0.3	0.7	0.9	1.1	2.9
Jun 06	1.6	0.3	0.8	0.8	1.1	2.6
Jun 07	1.7	0.3	0.8	0.8	1.1	2.3
Jun 08	1.8	0.3	0.8	0.7	1.1	2.5
Jun 09	1.8	0.3	0.8	0.6	1.1	2.4
Jun 10	2.2	0.3	0.7	0.6	1.1	2.6
Jun 11	2.0	0.2	0.8	0.5	1.0	2.5
Jun 12	1.6	0.2	0.7	0.5	1.1	2.5
Jun 13	1.5	0.2	0.6	0.5	1.0	2.5
Jun 14	1.6	0.3	0.6	0.5	1.0	2.5
Jun 15	2.0	0.3	0.6	0.6	0.9	2.2
Jun 16	1.8	0.3	0.6	0.6	0.8	2.1
Jun 17	1.5	0.3	0.6	0.6	0.9	1.8
Jun 18	1.3	0.4	0.5	0.7	0.9	1.7

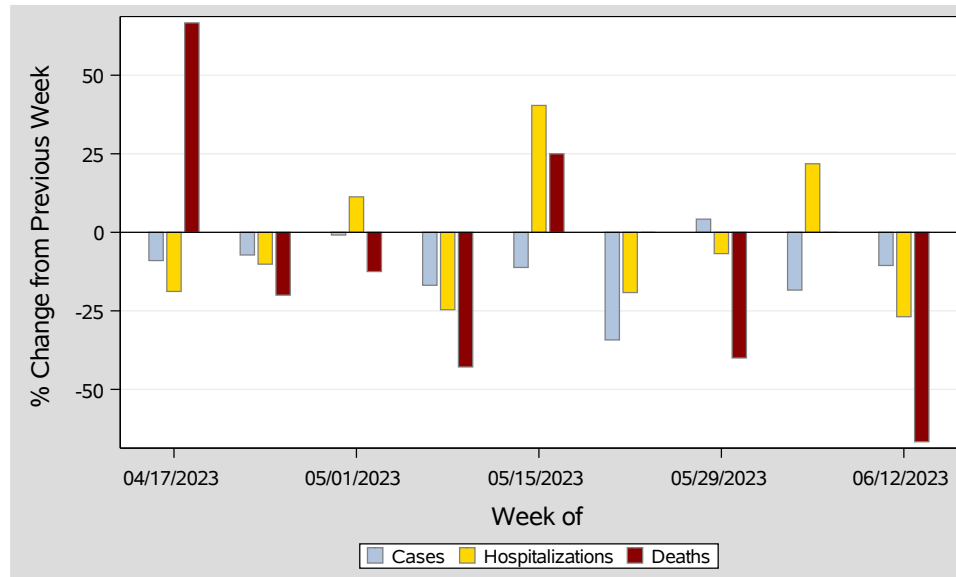


Table 6: Percent Change in Weekly Totals from Previous Week

Week	Case(n)	Cases(%)	Hosp(n)	Hosp(%)	Deaths(n)	Deaths(%)
Apr 17 - Apr 23	374	-9.0	69	-18.8	10	66.7
Apr 24 - Apr 30	347	-7.2	62	-10.1	8	-20.0
May 01 - May 07	344	-0.9	69	11.3	7	-12.5
May 08 - May 14	286	-16.9	52	-24.6	4	-42.9
May 15 - May 21	254	-11.2	73	40.4	5	25.0
May 22 - May 28	167	-34.3	59	-19.2	5	0.0
May 29 - Jun 04	174	4.2	55	-6.8	3	-40.0
Jun 05 - Jun 11	142	-18.4	67	21.8	3	0.0
Jun 12 - Jun 18	127	-10.6	49	-26.9	1	-66.7

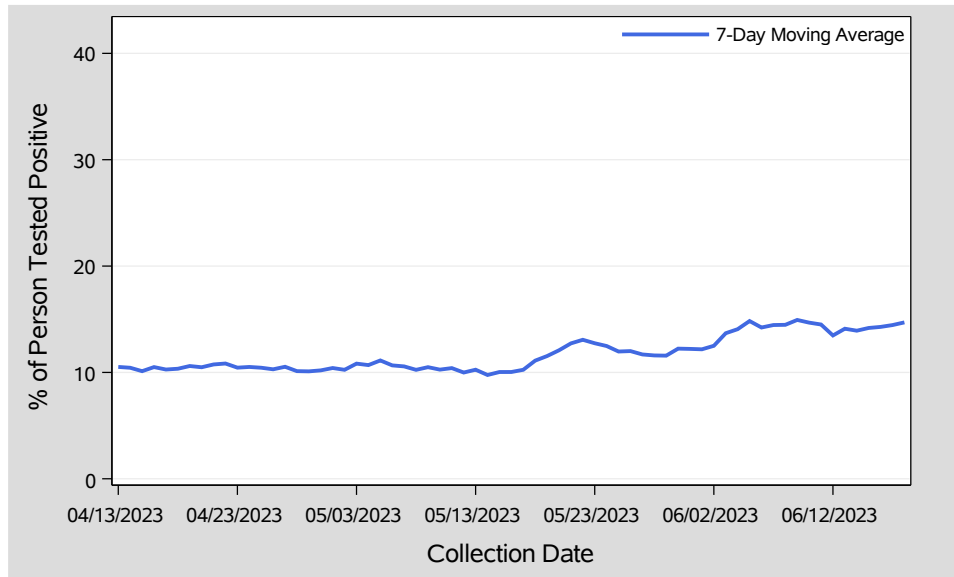


Table 7: Percent of People Receiving COVID-19 PCR Tests Who Have Positive Results

Collection Date	Positive	Negative	Equivocal Unknown	Total	Positive (%)	7-Day Average (%)
Jun 05	65	291	.	356	18.3	14.8
Jun 06	35	296	1	332	10.5	14.2
Jun 07	39	278	.	317	12.3	14.5
Jun 08	40	295	.	335	11.9	14.5
Jun 09	40	190	.	230	17.4	14.9
Jun 10	33	147	.	180	18.3	14.7
Jun 11	24	164	.	188	12.8	14.5
Jun 12	39	314	.	353	11.0	13.5
Jun 13	37	210	.	247	15.0	14.1
Jun 14	35	283	.	318	11.0	13.9
Jun 15	36	226	.	262	13.7	14.2
Jun 16	36	163	.	199	18.1	14.3
Jun 17	34	140	.	174	19.5	14.5
Jun 18	27	159	.	186	14.5	14.7

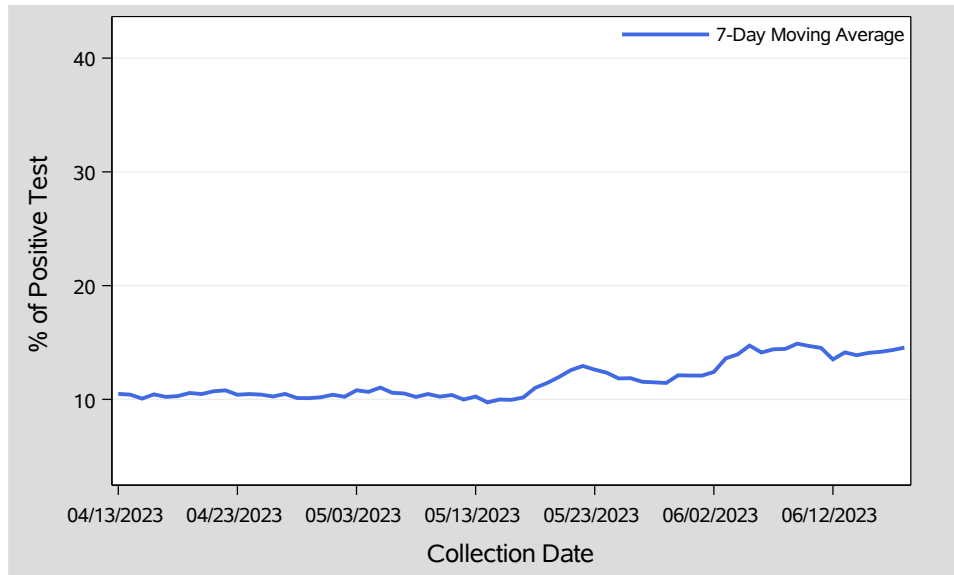


Table 8.1: Percent of Total COVID-19 PCR Tests With Positive Results

Collection Date	Positive	Negative	Equivocal Unknown	Total	Positive (%)	7-Day Average (%)
Jun 05	65	292	.	357	18.2	14.7
Jun 06	35	298	1	334	10.5	14.1
Jun 07	40	279	.	319	12.5	14.4
Jun 08	41	298	.	339	12.1	14.4
Jun 09	40	193	.	233	17.2	14.9
Jun 10	34	149	.	183	18.6	14.7
Jun 11	24	166	.	190	12.6	14.5
Jun 12	40	320	.	360	11.1	13.5
Jun 13	37	213	.	250	14.8	14.1
Jun 14	35	289	.	324	10.8	13.9
Jun 15	36	230	.	266	13.5	14.1
Jun 16	36	166	.	202	17.8	14.2
Jun 17	35	143	.	178	19.7	14.3
Jun 18	27	164	.	191	14.1	14.6

Table 8.2: COVID-19 PCR Test Totals Since Outbreak Start

Positive	Negative	Equivocal Unknown	Total	Positive(%)
832,022	4,832,501	17,435	5,681,958	14.6

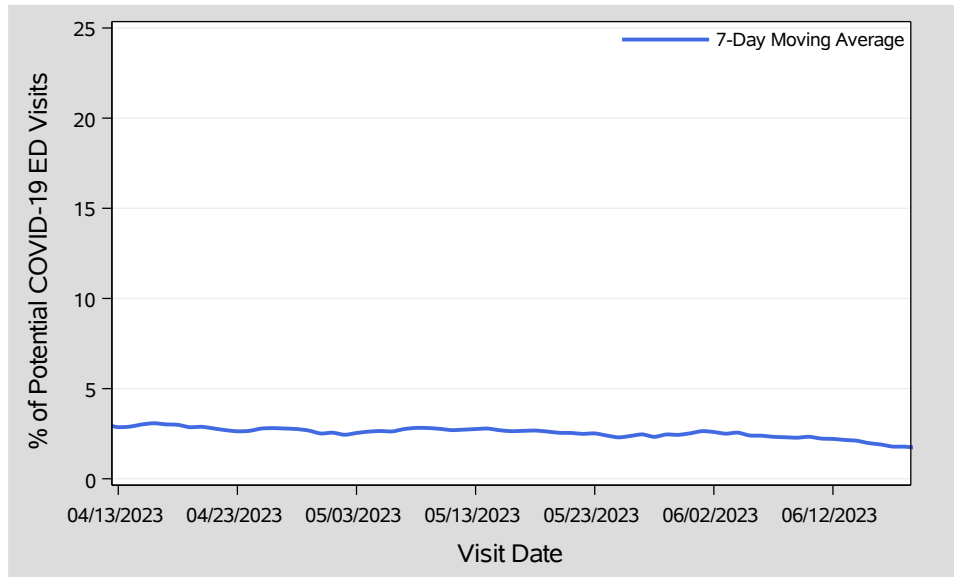


Table 9: Syndromic Surveillance: Percent of ED Visits Potentially Related to COVID-19

Visit Date	Possible COVID Visits	Total ED Visits	(%)	7-Day Average (%)
Jun 05	86	4,235	2.0	2.4
Jun 06	87	3,968	2.2	2.4
Jun 07	91	3,921	2.3	2.3
Jun 08	101	3,955	2.6	2.3
Jun 09	88	4,048	2.2	2.3
Jun 10	89	3,673	2.4	2.3
Jun 11	72	3,756	1.9	2.2
Jun 12	76	4,017	1.9	2.2
Jun 13	66	3,676	1.8	2.2
Jun 14	80	3,965	2.0	2.1
Jun 15	64	3,931	1.6	2.0
Jun 16	64	3,884	1.6	1.9
Jun 17	59	3,665	1.6	1.8
Jun 18	66	3,507	1.9	1.8

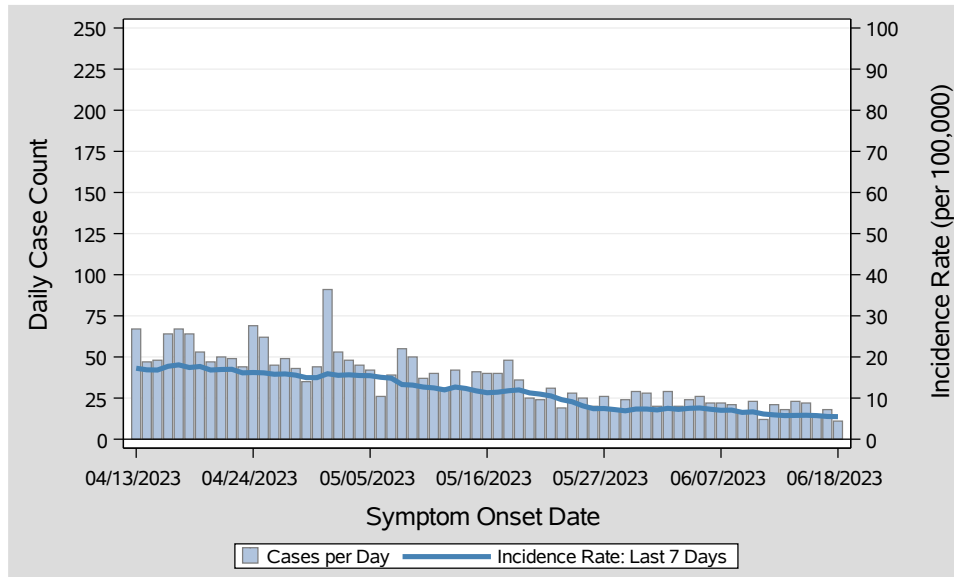


Table 10: COVID-19 Cases per Day and Incidence Rate in the Last 7 Days, Clark County, NV

Onset Date	Cases Per Day	Last 7 Days	
		Total Case Count	Incidence Rate
Jun 05	26	176	7.6
Jun 06	22	169	7.3
Jun 07	22	163	7.0
Jun 08	21	164	7.1
Jun 09	16	151	6.5
Jun 10	23	154	6.6
Jun 11	12	142	6.1
Jun 12	21	137	5.9
Jun 13	18	133	5.7
Jun 14	23	134	5.8
Jun 15	22	135	5.8
Jun 16	14	133	5.7
Jun 17	18	128	5.5
Jun 18	11	127	5.5

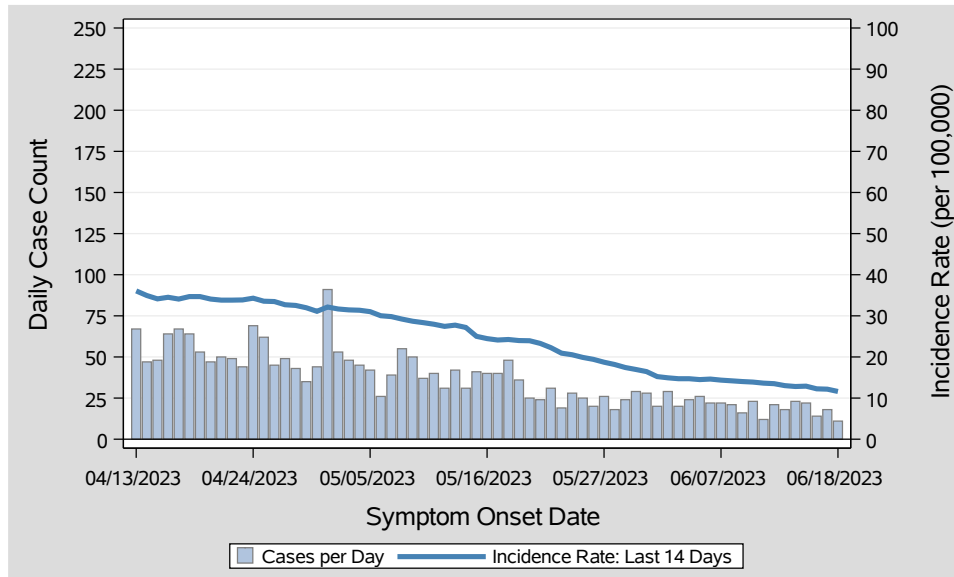


Table 11: COVID-19 Cases per Day and Incidence Rate in the Last 14 Days, Clark County, NV

Onset Date	Cases Per Day	Last 14 Days	
		Total Case Count	Incidence Rate
Jun 05	26	336	14.5
Jun 06	22	339	14.6
Jun 07	22	333	14.4
Jun 08	21	329	14.2
Jun 09	16	325	14.0
Jun 10	23	322	13.9
Jun 11	12	316	13.6
Jun 12	21	313	13.5
Jun 13	18	302	13.0
Jun 14	23	297	12.8
Jun 15	22	299	12.9
Jun 16	14	284	12.3
Jun 17	18	282	12.2
Jun 18	11	269	11.6

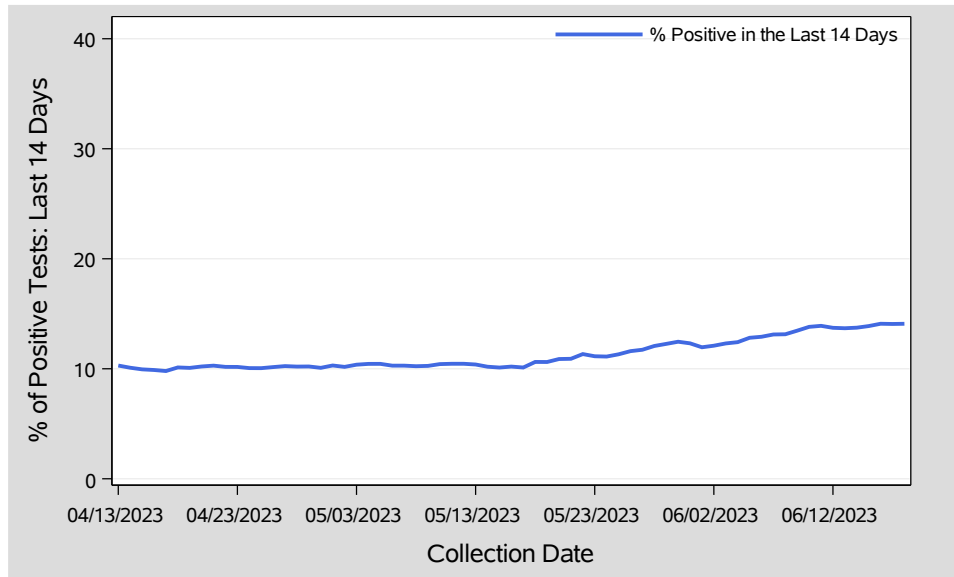


Table 12: Percent of Total COVID-19 PCR Tests With Positive Results in the Last 14 Days, Clark County, NV

Collection Date	Last 14 Days		
	# of Positive Tests	# of Total Tests	% of Positive Tests
Jun 05	553	4,315	12.8
Jun 06	546	4,230	12.9
Jun 07	539	4,109	13.1
Jun 08	536	4,080	13.1
Jun 09	545	4,048	13.5
Jun 10	551	3,990	13.8
Jun 11	548	3,942	13.9
Jun 12	555	4,044	13.7
Jun 13	531	3,880	13.7
Jun 14	528	3,844	13.7
Jun 15	525	3,782	13.9
Jun 16	527	3,740	14.1
Jun 17	526	3,738	14.1
Jun 18	525	3,726	14.1

Report prepared by: Ying Zhang, PhD, MPH (Office of Epidemiology) and Lei Zhang, MS (Office of Informatics)