

COVID-19 Trends

Clark County, Nevada

Document creation date: July 30, 2023

- **General notes:** This report uses surveillance data collected by the Southern Nevada Health District. Due to delays related to laboratory processing, reporting, and case investigations, data from the most recent days are less complete than data from older time points. For this reason, as of June 10, 2020 this report will not display data from the previous three days prior to the date that the report was created. As many case investigations are ongoing, all data presented in this report are considered preliminary and subject to change. Data regarding cases, hospitalizations, deaths, and labs were last updated July 30, 2023 at 12:00 AM, and data is reported up through July 26, 2023.
- **Cases:** Symptom onset date was used for aggregating cases. If symptom onset date was missing, the following dates were substituted in this order: diagnosis date, lab collection date, report date (date case was reported to SNHD), event creation date (date case was entered into EpiTrax, SNHD's surveillance system).
- **Hospitalizations:** Admission date reported the the Nevada Hospital Association was used for aggregating hospitalizations. One person could have more than one admissions.
- **Deaths:** Date of death was used for aggregating deaths. If date of death was missing, report date was used.
- For the "7-Day Average of Daily New Cases per 100K, by Age Group (Years)" graph and table, the population data source for calculating rate estimates was from Nevada State Demographer "2019 ASRHO Estimates and Projections Summary 2000 to 2038", 2020 projection, vintage 2019. Rates for individual age categories may be based on small numbers, which may give unstable estimates.
- All graphs in this report show data from approximately 60 days prior to the date of the report.
- All tables show data from the last 14 days before the current date, with the exception of the "Percent Change in Weekly Totals from Previous Week", which displays data from the previous eight completed weeks.
- For the "Percent of People Receiving COVID-19 PCR Tests Who Have Positive Results" graph, one person who has multiple specimens collected in one day is only reported once. If any test of that person is positive, that person counts as a positive result. If all tests of that individual are negative, that person counts as a negative result. Laboratory tests were included if they were a test assessing for the presence of SARS-CoV-2 viral RNA, for example PCR tests. Antibody and antigen tests were excluded.

COVID-19 Cases

Clark County, NV

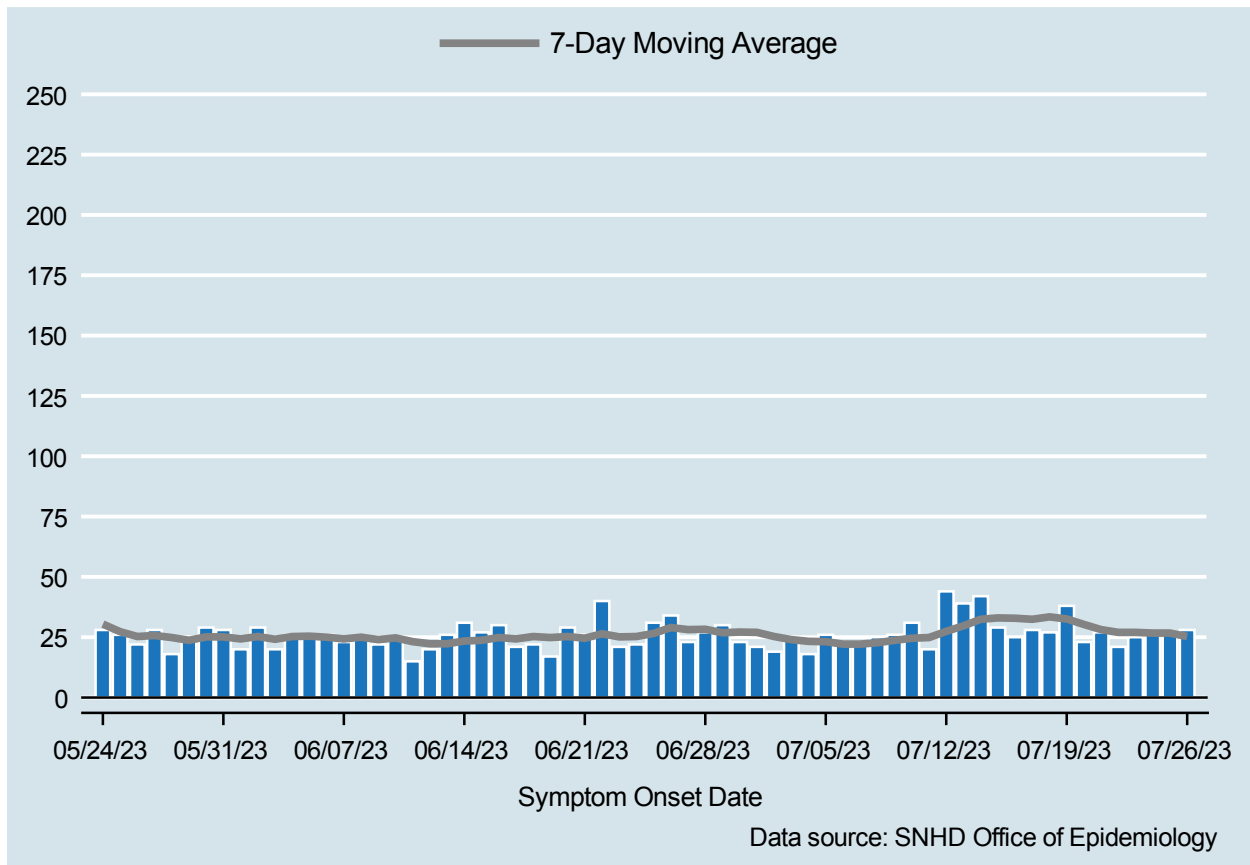


Table 1: COVID-19 Cases per Day, Clark County, NV

Date	Cases Per Day	7-Day Moving Average
JUL 13	39	29.7
JUL 14	42	32.4
JUL 15	29	33.0
JUL 16	25	32.9
JUL 17	28	32.4
JUL 18	27	33.4
JUL 19	38	32.6
JUL 20	23	30.3
JUL 21	27	28.1
JUL 22	21	27.0
JUL 23	25	27.0
JUL 24	26	26.7
JUL 25	27	26.7
JUL 26	28	25.3

COVID-19 Hospitalizations

Clark County, NV

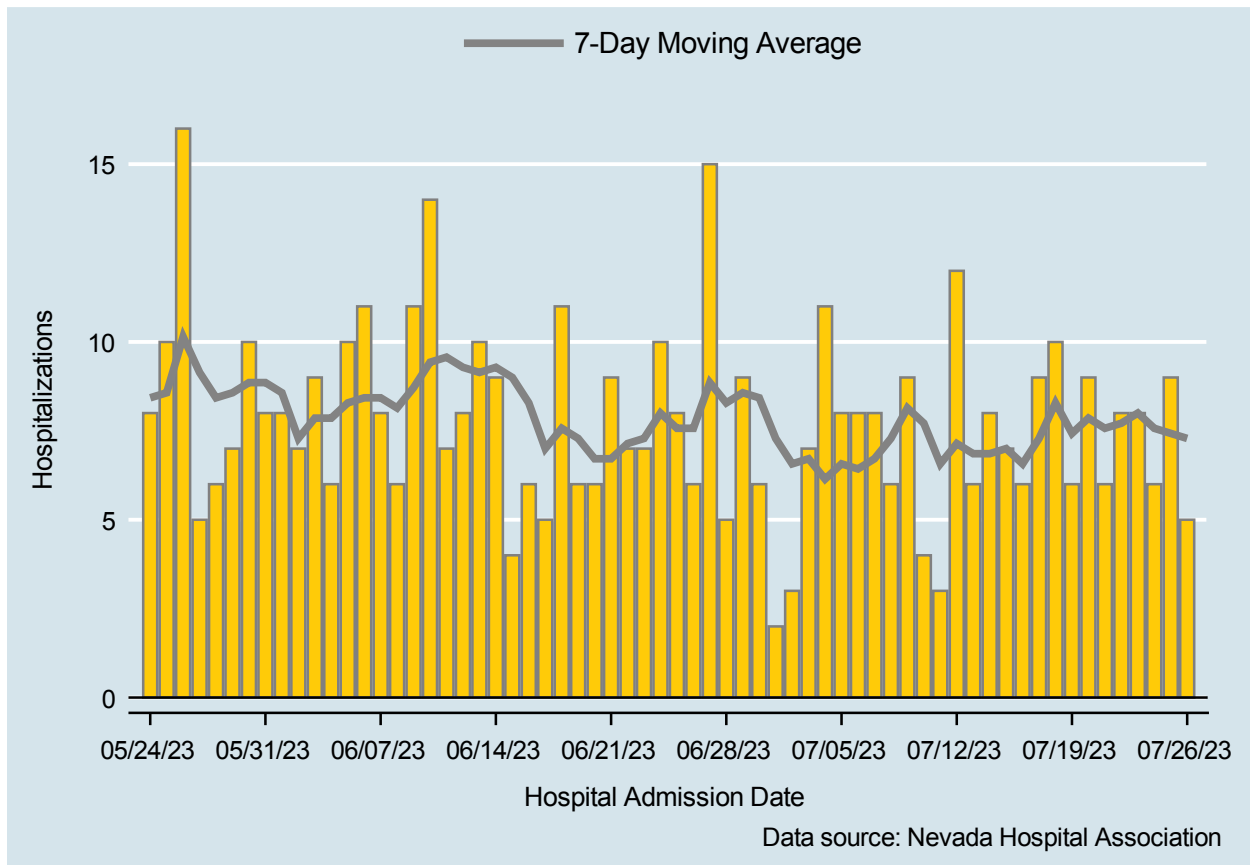


Table 2: COVID-19 Hospitalizations per Day, Clark County, NV

Date	Hospitalizations Per Day	7-Day Moving Average
JUL 13	6	6.9
JUL 14	8	6.9
JUL 15	7	7.0
JUL 16	6	6.6
JUL 17	9	7.3
JUL 18	10	8.3
JUL 19	6	7.4
JUL 20	9	7.9
JUL 21	6	7.6
JUL 22	8	7.7
JUL 23	8	8.0
JUL 24	6	7.6
JUL 25	9	7.4
JUL 26	5	7.3

Bed Occupancy of COVID-19 Hospitalizations

Clark County, NV

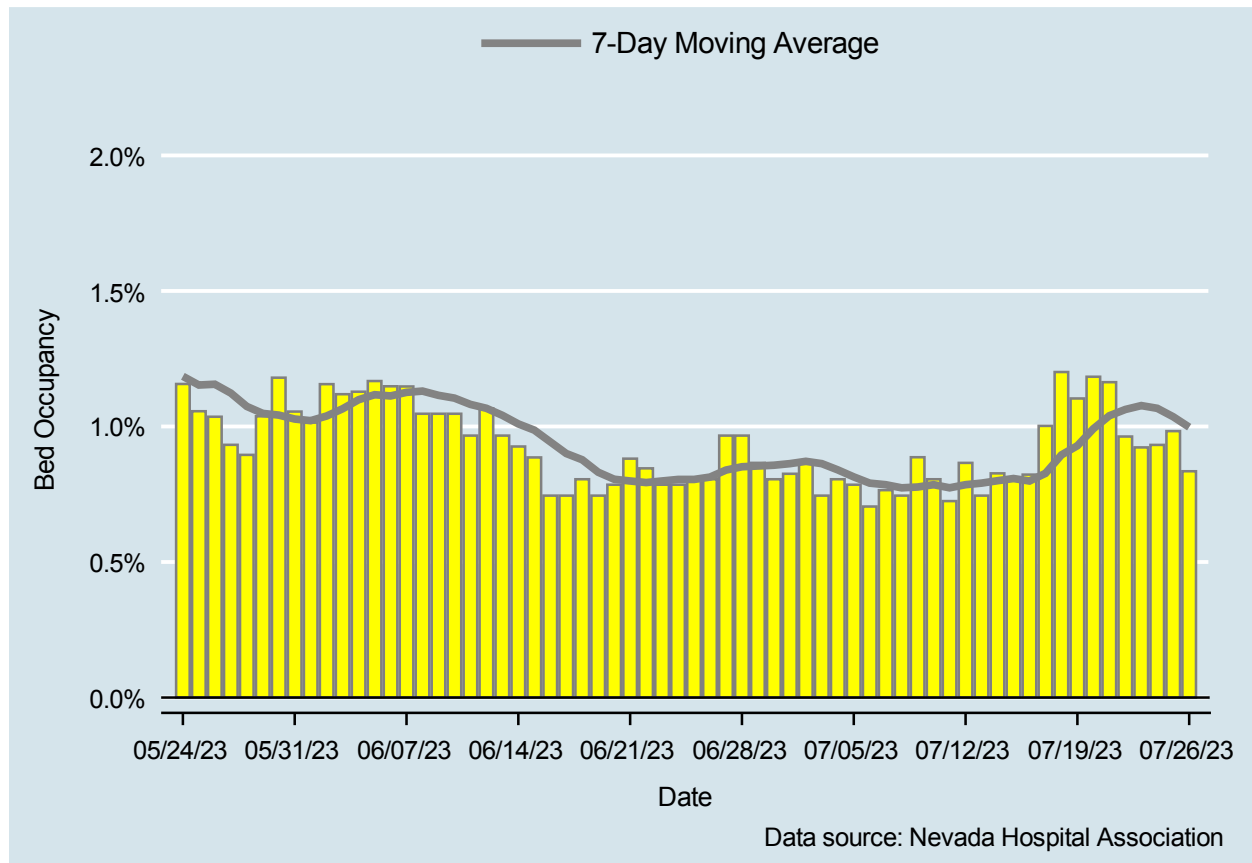


Table 3: Percent of Bed Occupancy per Day, Clark County, NV

Date	Bed Occupancy Per Day	7-Day Moving Average
JUL 13	0.74%	0.79%
JUL 14	0.83%	0.80%
JUL 15	0.80%	0.81%
JUL 16	0.82%	0.80%
JUL 17	1.00%	0.83%
JUL 18	1.20%	0.90%
JUL 19	1.10%	0.93%
JUL 20	1.18%	0.99%
JUL 21	1.16%	1.04%
JUL 22	0.96%	1.06%
JUL 23	0.92%	1.08%
JUL 24	0.93%	1.07%
JUL 25	0.98%	1.04%
JUL 26	0.83%	1.00%

COVID-19 Deaths

Clark County, NV

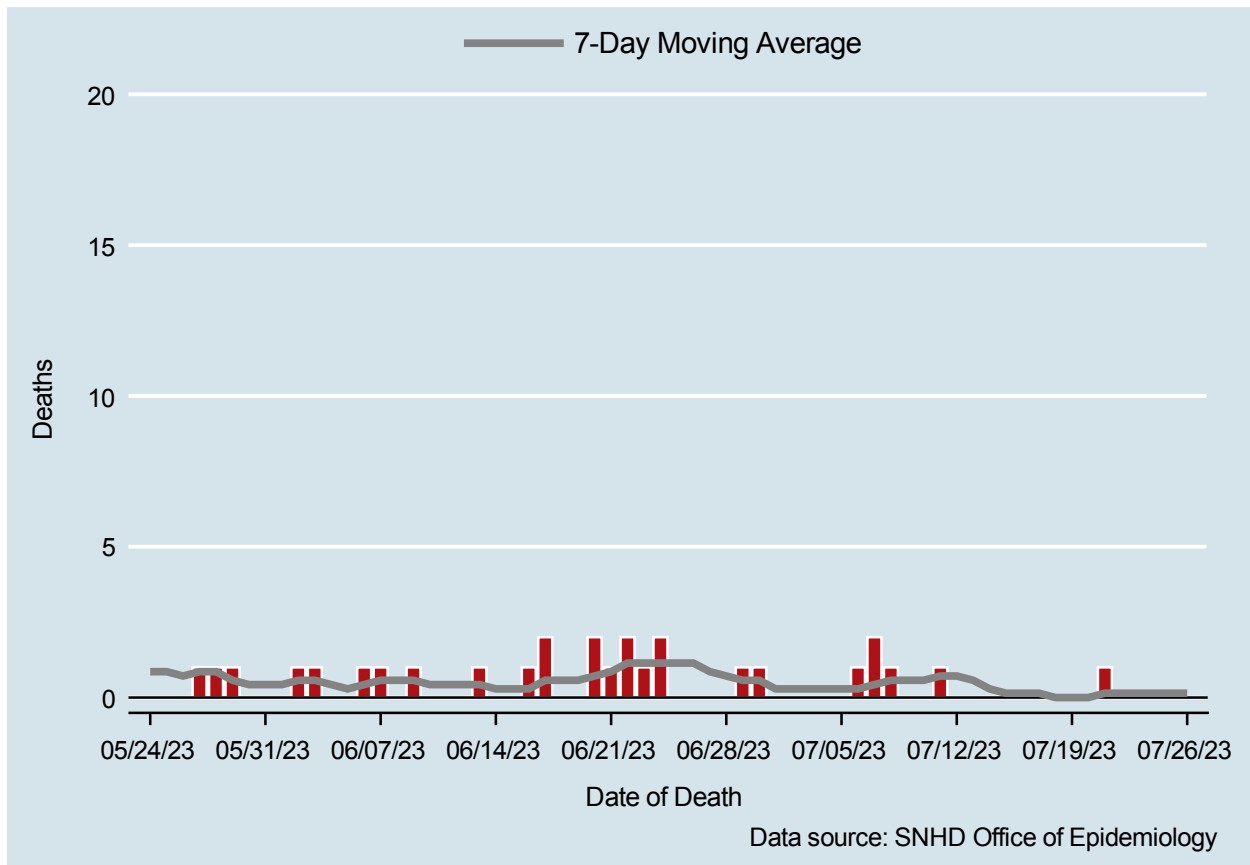


Table 4: COVID-19 Deaths per Day, Clark County, NV

Date	Deaths Per Day	7-Day Moving Average
JUL 13	0	0.6
JUL 14	0	0.3
JUL 15	0	0.1
JUL 16	0	0.1
JUL 17	0	0.1
JUL 18	0	0.0
JUL 19	0	0.0
JUL 20	0	0.0
JUL 21	1	0.1
JUL 22	0	0.1
JUL 23	0	0.1
JUL 24	0	0.1
JUL 25	0	0.1
JUL 26	0	0.1

7-Day Average of Daily New Cases per 100K, by Age Group (Years)

Clark County, NV

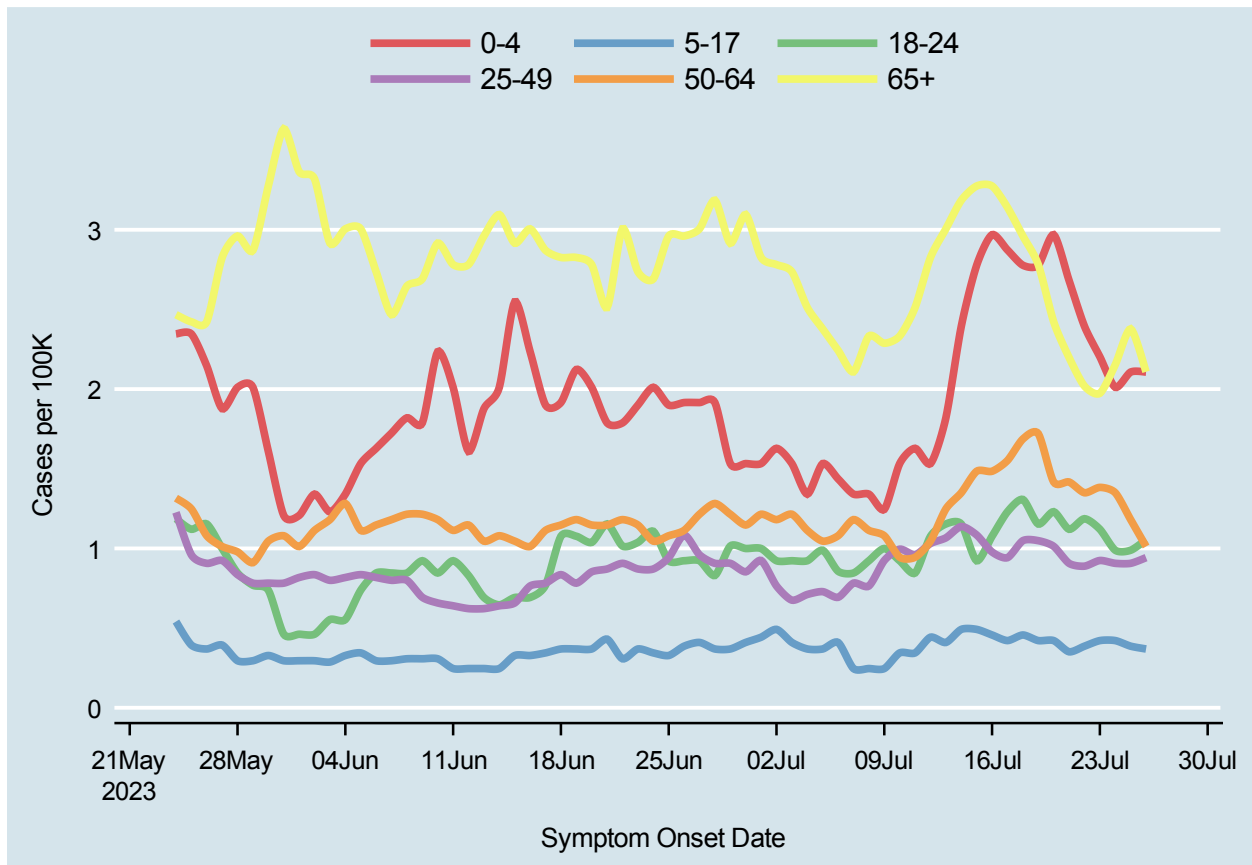


Table 5: 7-Day Average of Daily New Cases per 100K, by Age Group (Years)

Date	0-4	5-17	18-24	25-49	50-64	65+
JUL 13	1.8	0.4	1.2	1.1	1.2	3.0
JUL 14	2.4	0.5	1.2	1.1	1.3	3.2
JUL 15	2.8	0.5	0.9	1.1	1.5	3.3
JUL 16	3.0	0.5	1.1	1.0	1.5	3.3
JUL 17	2.9	0.4	1.2	0.9	1.6	3.1
JUL 18	2.8	0.5	1.3	1.0	1.7	3.0
JUL 19	2.8	0.4	1.2	1.0	1.7	2.8
JUL 20	3.0	0.4	1.2	1.0	1.4	2.4
JUL 21	2.7	0.4	1.1	0.9	1.4	2.2
JUL 22	2.4	0.4	1.2	0.9	1.3	2.0
JUL 23	2.2	0.4	1.1	0.9	1.4	2.0
JUL 24	2.0	0.4	1.0	0.9	1.3	2.2
JUL 25	2.1	0.4	1.0	0.9	1.2	2.4
JUL 26	2.1	0.4	1.1	0.9	1.0	2.1

Report prepared by: Ying Zhang, PhD, MPH (Office of Epidemiology) and Lei Zhang, MS (Office of Informatics)