

COVID-19 Trends

Clark County, Nevada

Document creation date: July 17, 2023

- General notes: This report uses surveillance data collected by the Southern Nevada Health District. Due to delays related to laboratory processing, reporting, and case investigations, data from the most recent days are less complete than data from older time points. For this reason, as of June 10, 2020 this report will not display data from the previous three days prior to the date that the report was created. As many case investigations are ongoing, all data presented in this report are considered preliminary and subject to change. Data regarding cases, hospitalizations, deaths, and labs were last updated July 17, 2023 at 12:00 AM, and data is reported up through July 13, 2023.
- Cases: Symptom onset date was used for aggregating cases. If symptom onset date was missing, the following dates were substituted in this order: diagnosis date, lab collection date, report date (date case was reported to SNHD), event creation date (date case was entered into EpiTrax, SNHD's surveillance system).
- Hospitalizations: Admission date reported the the Nevada Hospital Association was used for aggregating hospitalizations. One person could have more than one admissions.
- Deaths: Date of death was used for aggregating deaths. If date of death was missing, report date was used.
- For the "7-Day Average of Daily New Cases per 100K, by Age Group (Years)" graph and table, the population data source for calculating rate estimates was from Nevada State Demographer "2019 ASRHO Estimates and Projections Summary 2000 to 2038", 2020 projection, vintage 2019. Rates for individual age categories may be based on small numbers, which may give unstable estimates.
- All graphs in this report show data from approximately 60 days prior to the date of the report.
- All tables show data from the last 14 days before the current date, with the exception of the "Percent Change in Weekly Totals from Previous Week", which displays data from the previous eight completed weeks.
- For the "Percent of People Receiving COVID-19 PCR Tests Who Have Positive Results" graph, one person who has multiple specimens collected in one day is only reported once. If any test of that person is positive, that person counts as a positive result. If all tests of that individual are negative, that person counts as a negative result. Laboratory tests were included if they were a test assessing for the presence of SARS-CoV-2 viral RNA, for example PCR tests. Antibody and antigen tests were excluded.

COVID-19 Cases

Clark County, NV

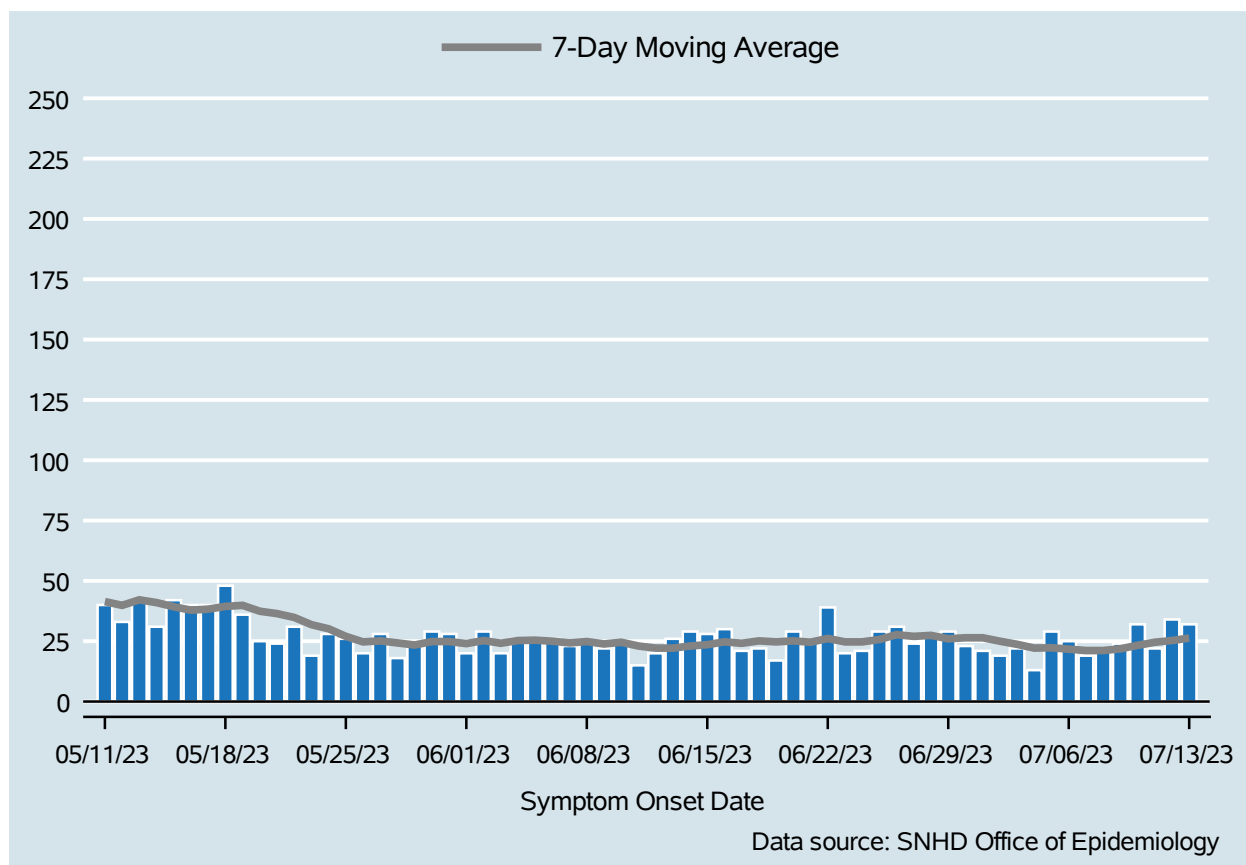


Table 1: COVID-19 Cases per Day, Clark County, NV

Date	Cases Per Day	7-Day Moving Average
Jun 30	23	26.4
Jul 01	21	26.4
Jul 02	19	25.0
Jul 03	22	23.7
Jul 04	13	22.1
Jul 05	29	22.3
Jul 06	25	21.7
Jul 07	19	21.1
Jul 08	21	21.1
Jul 09	24	21.9
Jul 10	32	23.3
Jul 11	22	24.6
Jul 12	34	25.3
Jul 13	32	26.3

COVID-19 Hospitalizations

Clark County, NV

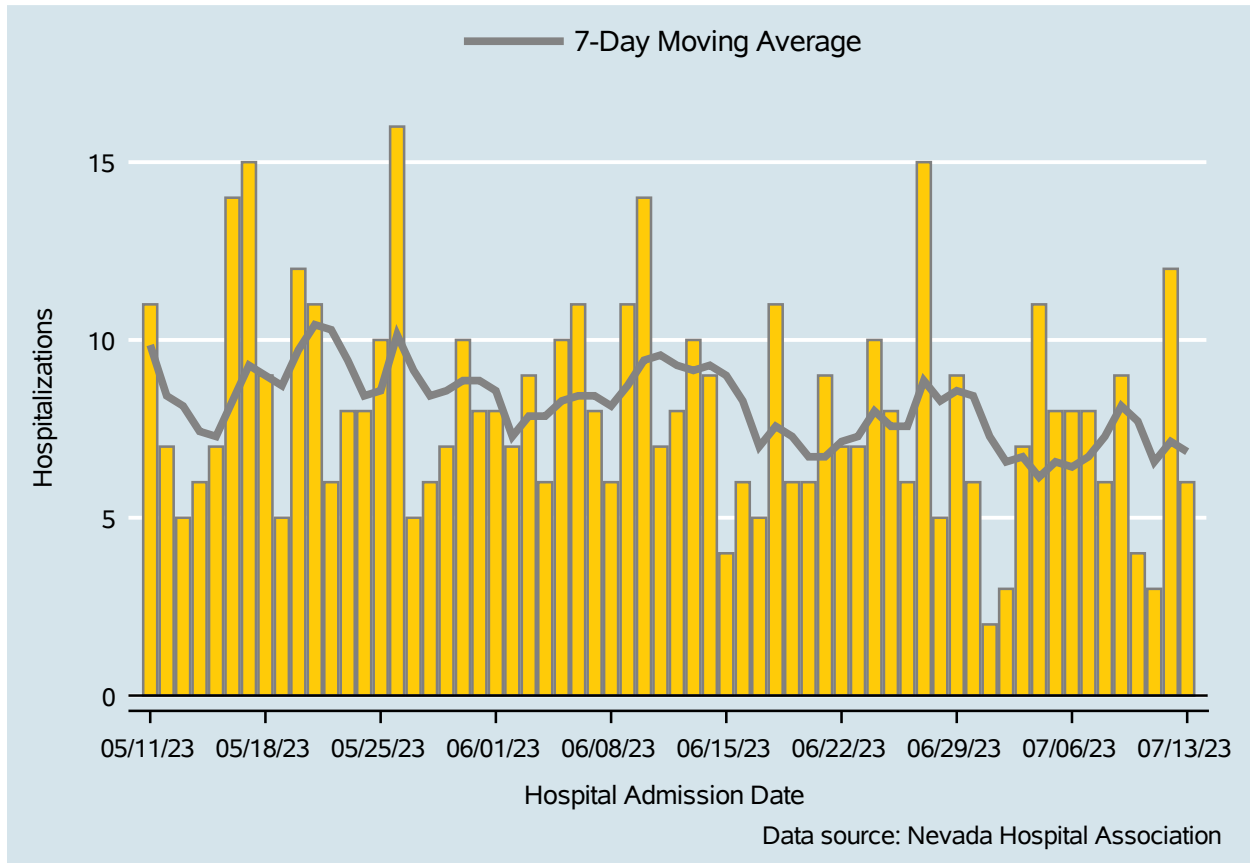


Table 2: COVID-19 Hospitalizations per Day, Clark County, NV

Date	Hospitalizations Per Day	7-Day Moving Average
Jun 30	6	8.4
Jul 01	2	7.3
Jul 02	3	6.6
Jul 03	7	6.7
Jul 04	11	6.1
Jul 05	8	6.6
Jul 06	8	6.4
Jul 07	8	6.7
Jul 08	6	7.3
Jul 09	9	8.1
Jul 10	4	7.7
Jul 11	3	6.6
Jul 12	12	7.1
Jul 13	6	6.9

Bed Occupancy of COVID-19 Hospitalizations

Clark County, NV

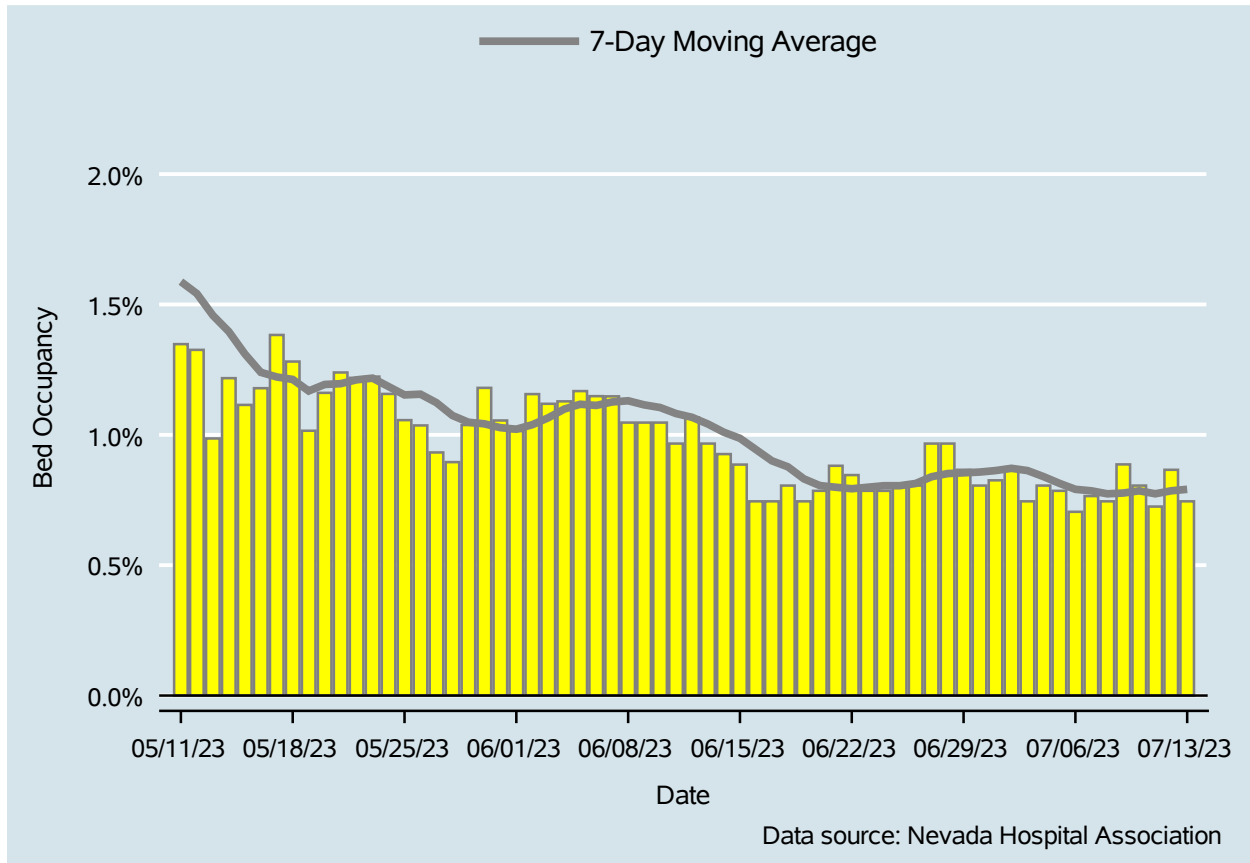


Table 3: Percent of Bed Occupancy per Day, Clark County, NV

Date	Bed Occupancy Per Day	7-Day Moving Average
Jun 30	0.81%	0.86%
Jul 01	0.83%	0.86%
Jul 02	0.87%	0.87%
Jul 03	0.74%	0.86%
Jul 04	0.81%	0.84%
Jul 05	0.79%	0.81%
Jul 06	0.70%	0.79%
Jul 07	0.77%	0.79%
Jul 08	0.74%	0.77%
Jul 09	0.89%	0.78%
Jul 10	0.81%	0.79%
Jul 11	0.72%	0.77%
Jul 12	0.87%	0.79%
Jul 13	0.74%	0.79%

COVID-19 Deaths

Clark County, NV

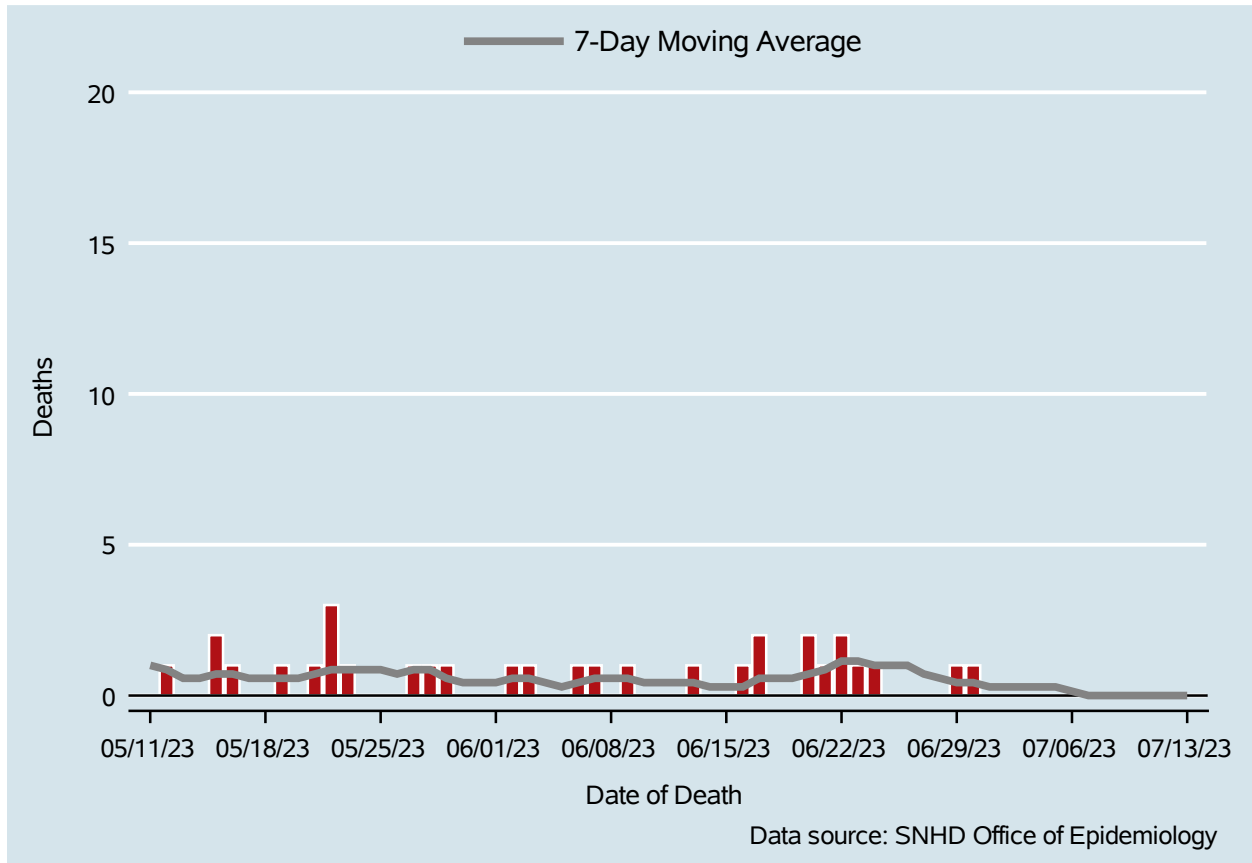


Table 4: COVID-19 Deaths per Day, Clark County, NV

Date	Deaths Per Day	7-Day Moving Average
Jun 30	1	0.4
Jul 01	0	0.3
Jul 02	0	0.3
Jul 03	0	0.3
Jul 04	0	0.3
Jul 05	0	0.3
Jul 06	0	0.1
Jul 07	0	0.0
Jul 08	0	0.0
Jul 09	0	0.0
Jul 10	0	0.0
Jul 11	0	0.0
Jul 12	0	0.0
Jul 13	0	0.0

7-Day Average of Daily New Cases per 100K, by Age Group (Years)

Clark County, NV

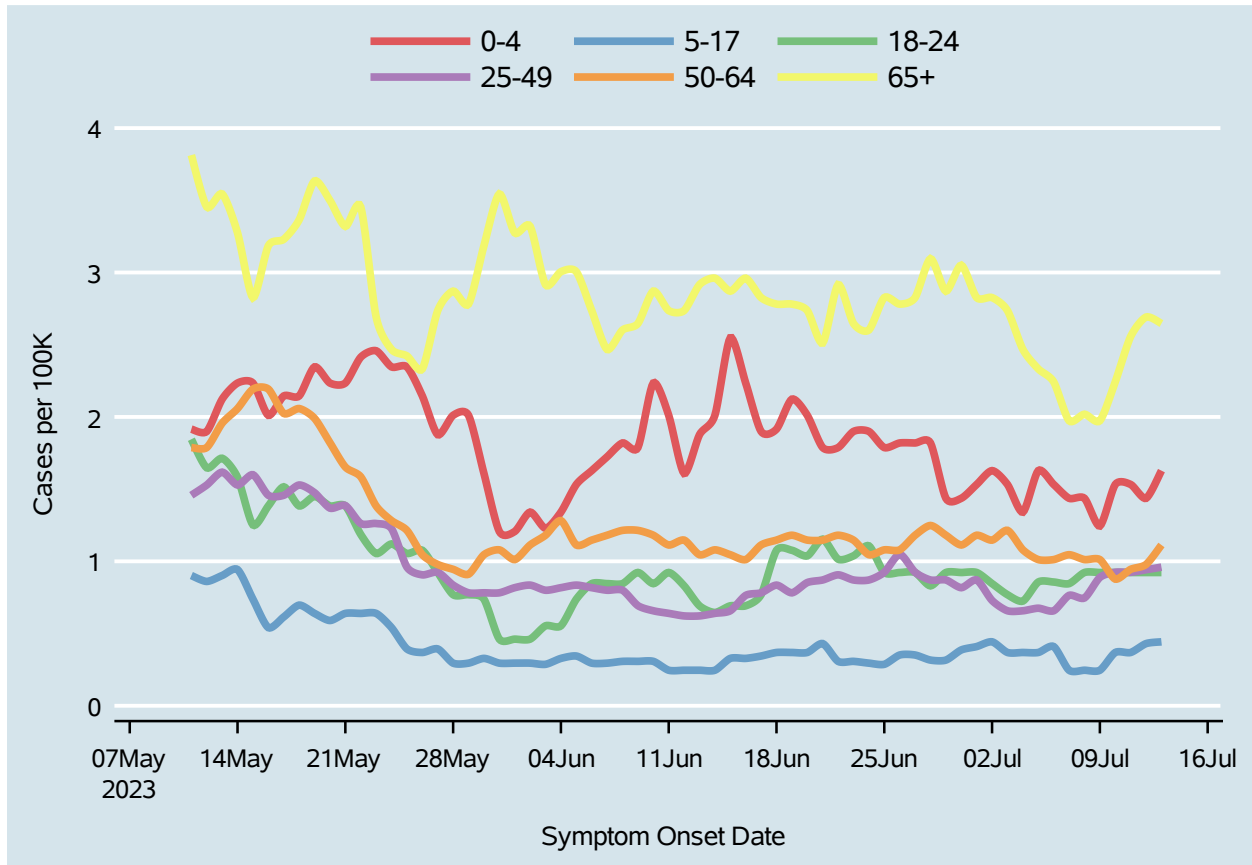
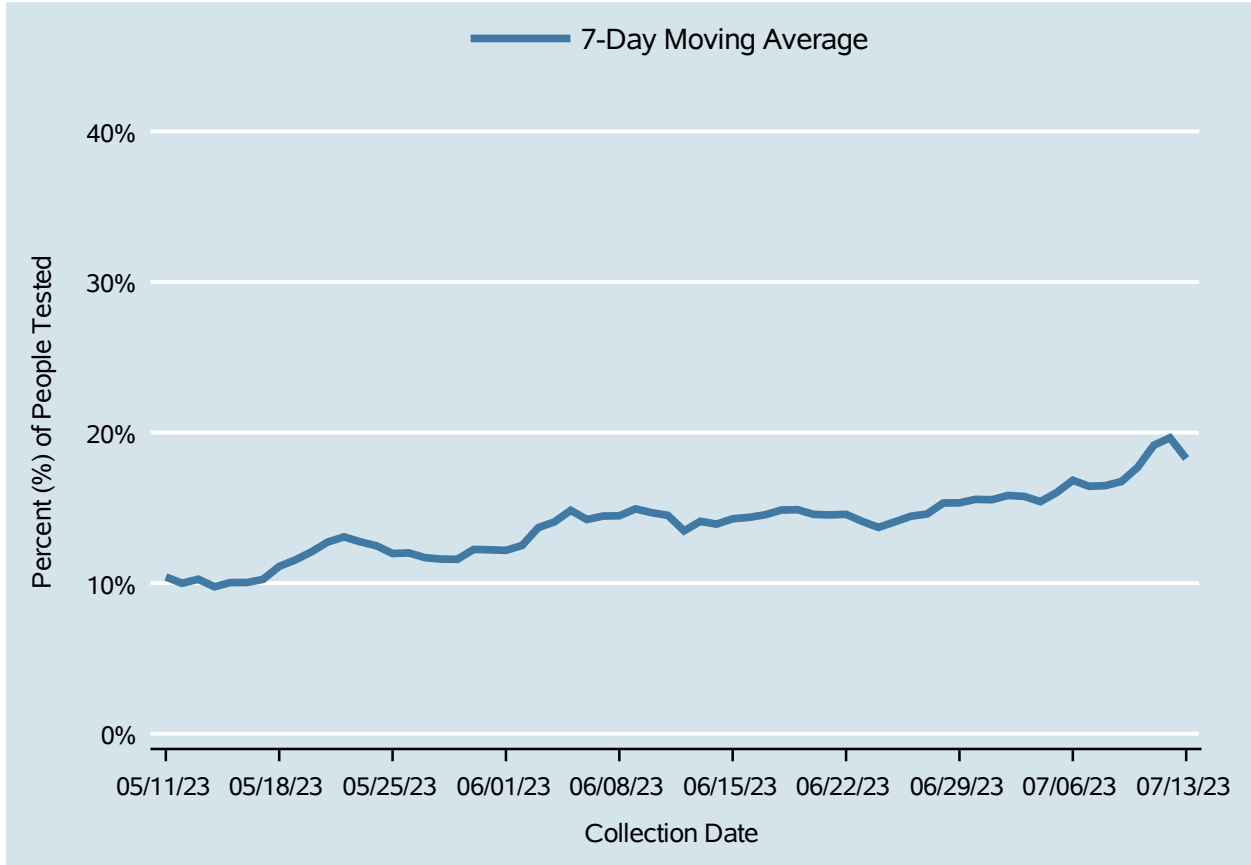


Table 5: 7-Day Average of Daily New Cases per 100K, by Age Group (Years)

Date	0-4	5-17	18-24	25-49	50-64	65+
Jun 30	1.4	0.4	0.9	0.8	1.1	3.1
Jul 01	1.5	0.4	0.9	0.9	1.2	2.8
Jul 02	1.6	0.4	0.8	0.7	1.1	2.8
Jul 03	1.5	0.4	0.8	0.7	1.2	2.7
Jul 04	1.3	0.4	0.7	0.7	1.1	2.5
Jul 05	1.6	0.4	0.9	0.7	1.0	2.3
Jul 06	1.5	0.4	0.9	0.7	1.0	2.2
Jul 07	1.4	0.2	0.8	0.8	1.0	2.0
Jul 08	1.4	0.2	0.9	0.7	1.0	2.0
Jul 09	1.2	0.2	0.9	0.9	1.0	2.0
Jul 10	1.5	0.4	0.9	0.9	0.9	2.2
Jul 11	1.5	0.4	0.9	0.9	0.9	2.6
Jul 12	1.4	0.4	0.9	0.9	1.0	2.7
Jul 13	1.6	0.4	0.9	1.0	1.1	2.6

Percent of People Receiving COVID-19 PCR Tests Who Have Positive Results

Clark County, NV



Report prepared by: Ying Zhang, PhD, MPH (Office of Epidemiology) and Lei Zhang, MS (Office of Informatics)