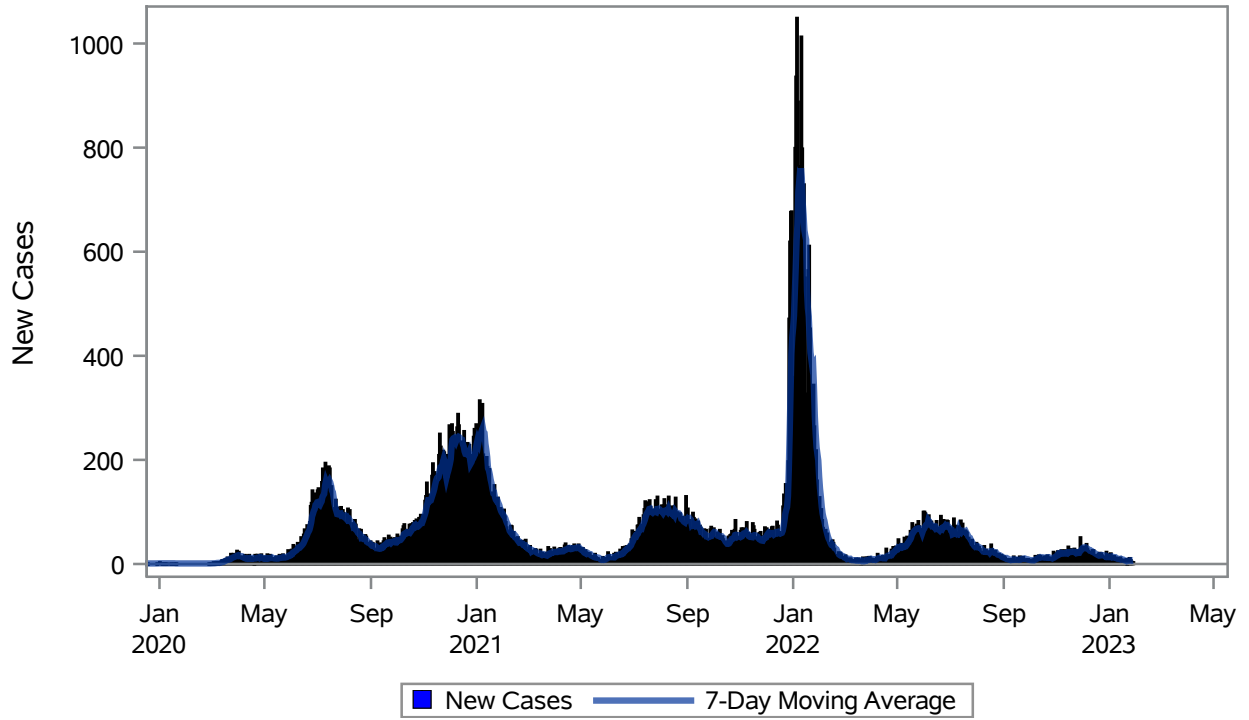


COVID19 Cases for North Las Vegas, 7-Day Moving Average



Investigations are ongoing; data are subject to change.

Reporting through 30JAN2023

North Las Vegas zip codes include 89030, 89031, 89032, 89033, 89036, 89081, 89084, 89085, 89086, 89087.

Table 1: New COVID19 Cases and 7-Day Moving Average in North Las Vegas, Previous Two Weeks

Date (Daily)	New Cases	7-Day Moving Average
17JAN2023	6	8.29
18JAN2023	4	7.29
19JAN2023	5	6.71
20JAN2023	9	6.29
21JAN2023	1	5.29
22JAN2023	7	5.71
23JAN2023	10	6.00
24JAN2023	11	6.71
25JAN2023	7	7.14
26JAN2023	4	7.00
27JAN2023	3	6.14
28JAN2023	3	6.43

Note1: Event Date is calculated as follows based on completed information:

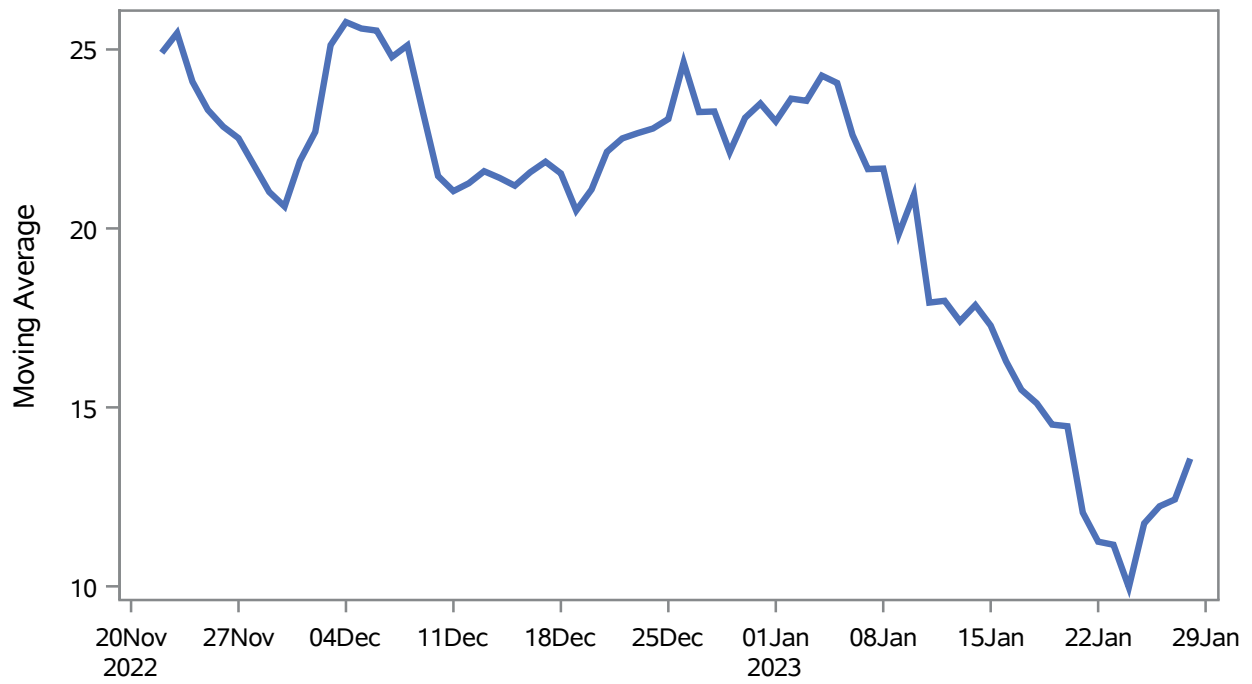
1) Disease onset date 2) Disease diagnosis date 3) Lab result collection date 4) Report date to SNHD.

Investigations are ongoing; data are subject to change.

Reporting through 30JAN2023

North Las Vegas zip codes include 89030, 89031, 89032, 89033, 89036, 89081, 89084, 89085, 89086, 89087.

Percent of People Receiving COVID-19 Viral Tests Who Have Positive Results in North Las Vegas



Investigations are ongoing; data are subject to change.

Reporting through 30JAN2023

North Las Vegas zip codes include 89030, 89031, 89032, 89033, 89036, 89081, 89084, 89085, 89086, 89087.

Table 2: Percent of People Receiving COVID-19 Viral Tests Who Have Positive Results in North Las Vegas

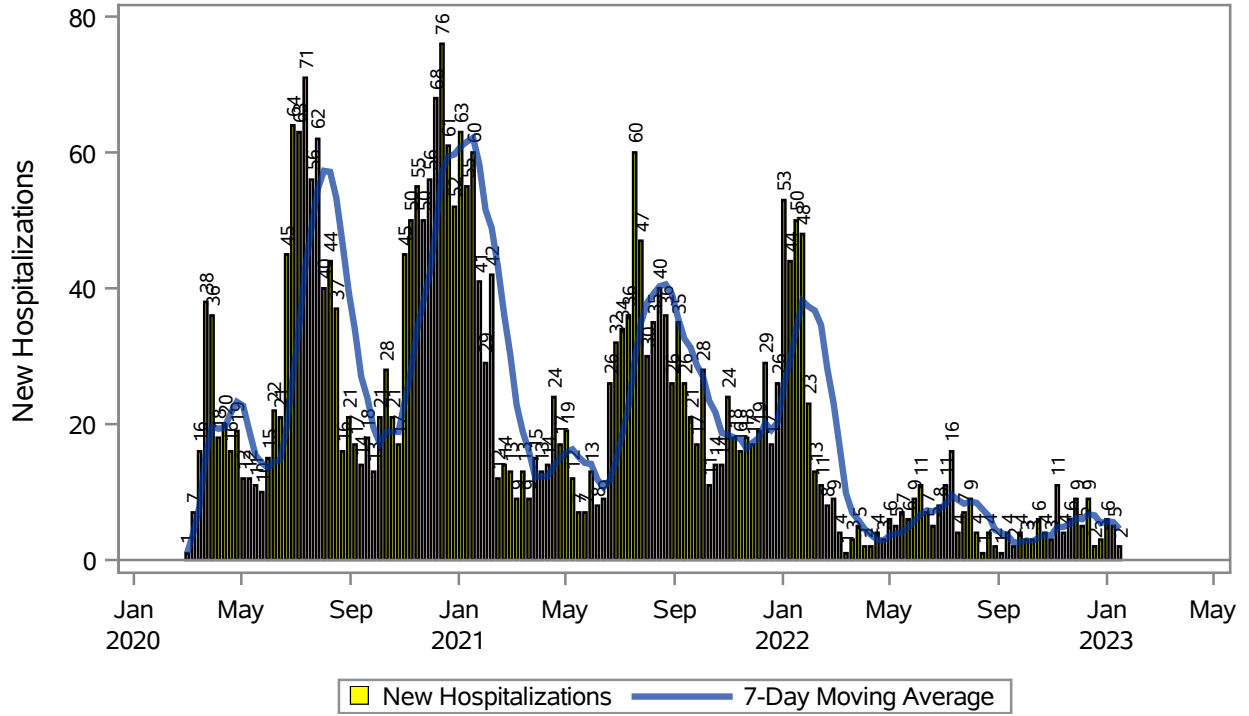
Collection Date	Positive	Negative	Equivocal	Total	% Positivity	7-Day Moving Average
14JAN2023	17	48		65	26.15	17.9
15JAN2023	8	43		51	15.69	17.3
16JAN2023	13	98		111	11.71	16.3
17JAN2023	18	90	1	109	16.51	15.5
18JAN2023	11	178	1	190	5.79	15.1
19JAN2023	13	81		94	13.83	14.5
20JAN2023	10	76		86	11.63	14.5
21JAN2023	5	49		54	9.26	12.1
22JAN2023	6	54		60	10.00	11.2
23JAN2023	11	88		99	11.11	11.2
24JAN2023	16	179		195	8.21	9.97
25JAN2023	17	76		93	18.28	11.8
26JAN2023	17	82		99	17.17	12.2
27JAN2023	7	47		54	12.96	12.4
28JAN2023	10	48		58	17.24	13.6

Note: Testing Data includes a 3 day delay

**Investigations are ongoing; data are subject to change.
Reporting through 30JAN2023**

North Las Vegas zip codes include 89030, 89031, 89032, 89033, 89036, 89081, 89084, 89085, 89086, 89087.

COVID19 Hospitalizations for North Las Vegas, 7-Day Moving Average



Investigations are ongoing; data are subject to change.

Reporting through 30JAN2023

North Las Vegas zip codes include 89030, 89031, 89032, 89033, 89036, 89081, 89084, 89085, 89086, 89087.

Table 3: New COVID19-Related Hospitalizations and 7-Day Moving Average in North Las Vegas, previous month

Week	Hospitalizations	7-Day Moving Average
01JAN2023	6	5.71
08JAN2023	5	5.57
15JAN2023	2	4.57

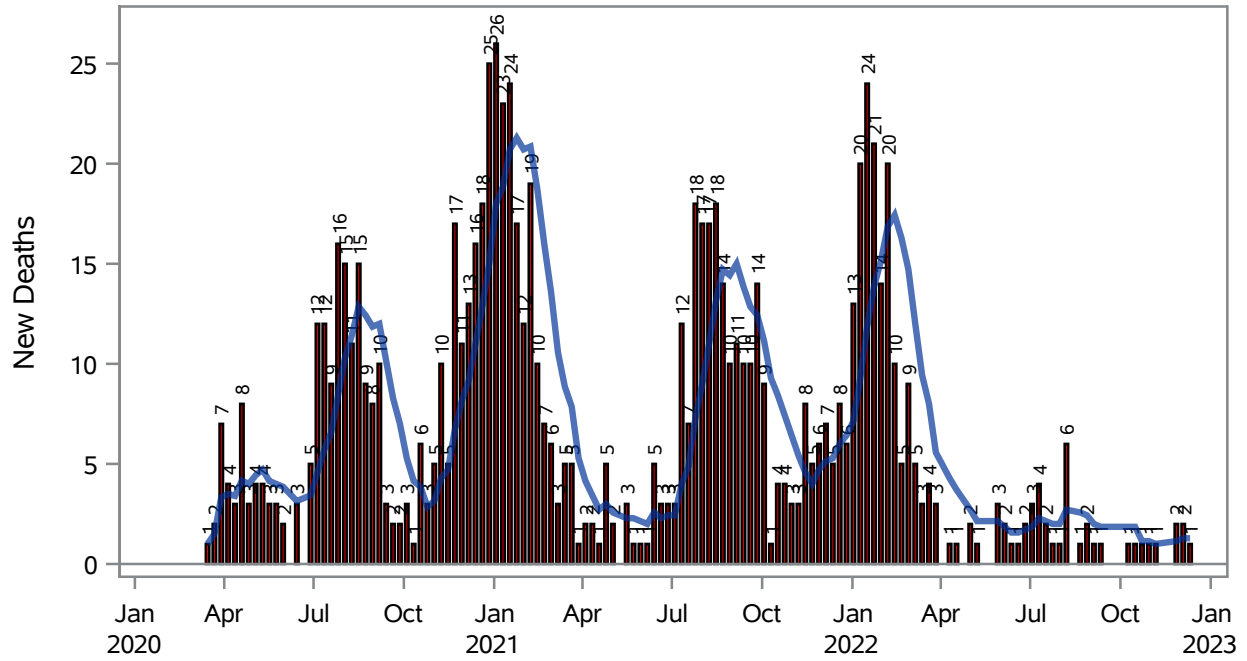
Note1: Admission Date is calculated as follows based on completed information:
A) COVID19 Case is hospitalized B) COVID19 Case has a hospital admission date.

If admission date is missing, then the following is substituted temporarily, in order:
1) Disease onset date 2) Disease diagnosis date 3) Lab result collection date 4) Report date to SNHD.

**Investigations are ongoing; data are subject to change.
Reporting through 30JAN2023**

North Las Vegas zip codes include 89030, 89031, 89032, 89033, 89036, 89081, 89084, 89085, 89086, 89087.

COVID19 Deaths for North Las Vegas, 7-Day Moving Average



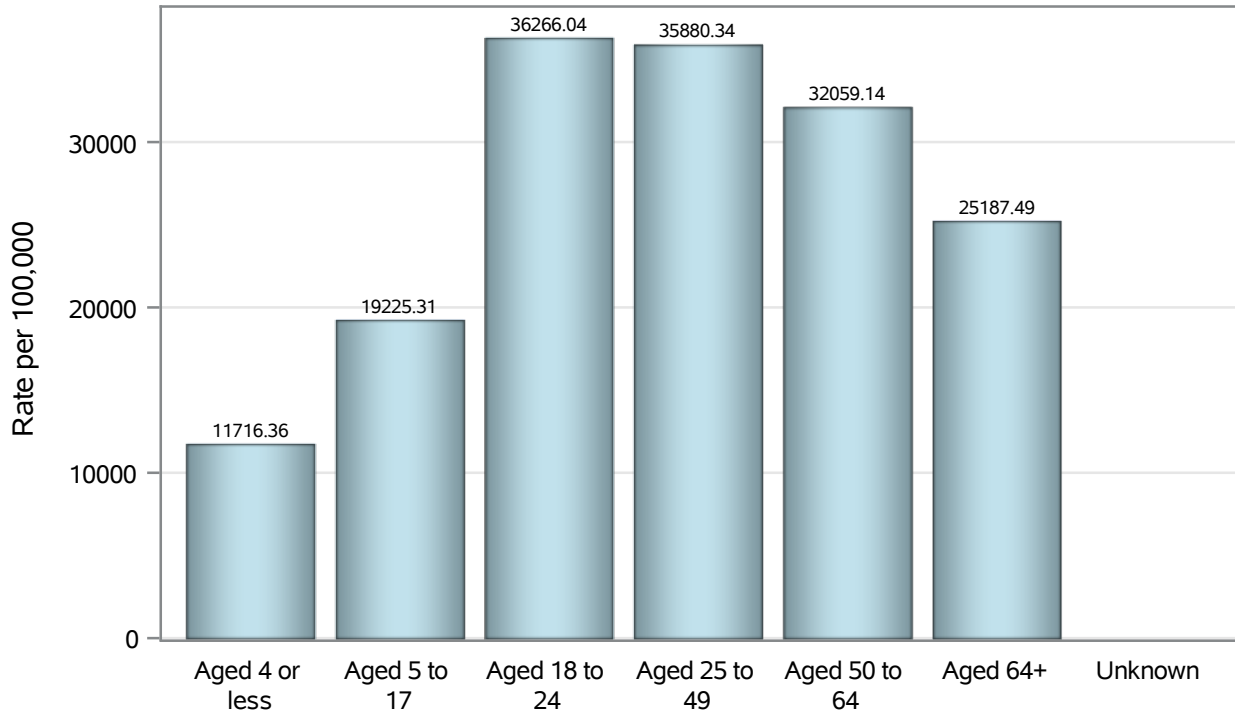
■ New Deaths — 7-Day Moving Average

Investigations are ongoing; data are subject to change.

Reporting through 30JAN2023

North Las Vegas zip codes include 89030, 89031, 89032, 89033, 89036, 89081, 89084, 89085, 89086, 89087.

Case Age Rates in North Las Vegas

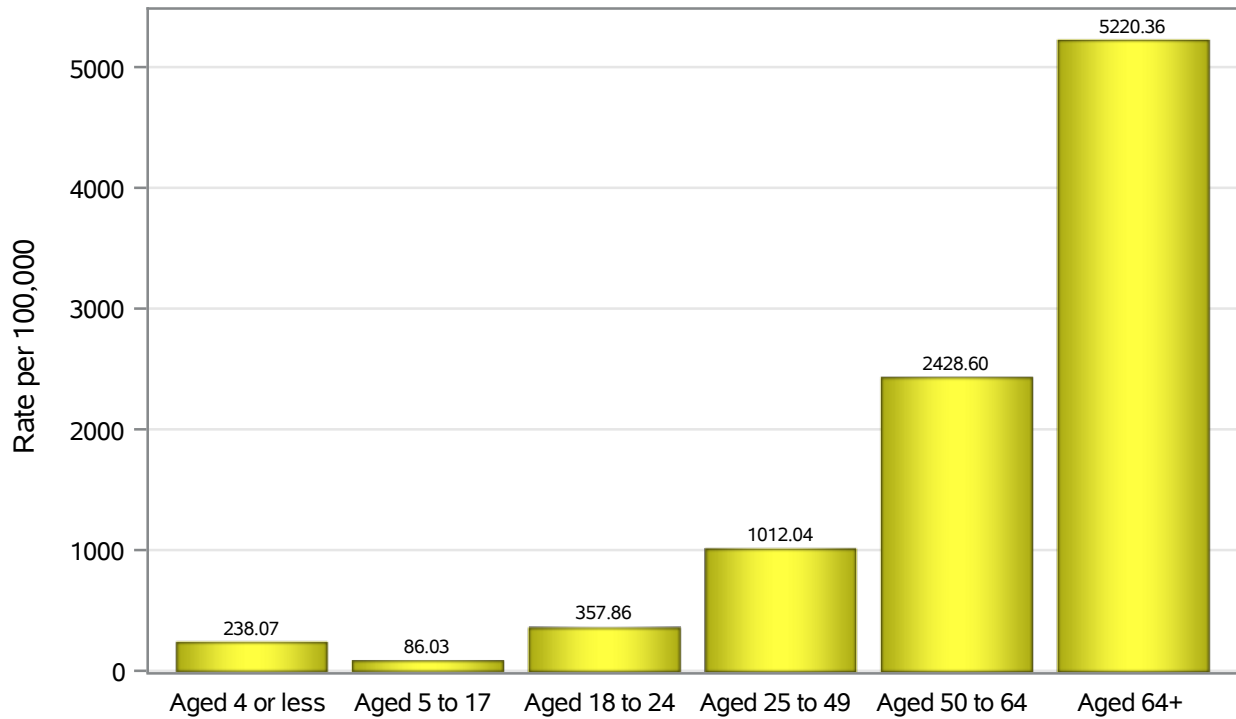


Investigations are ongoing; data are subject to change.

Reporting through 30JAN2023

North Las Vegas zip codes include 89030, 89031, 89032, 89033, 89036, 89081, 89084, 89085, 89086, 89087.

Hospitalization Age Rates in North Las Vegas

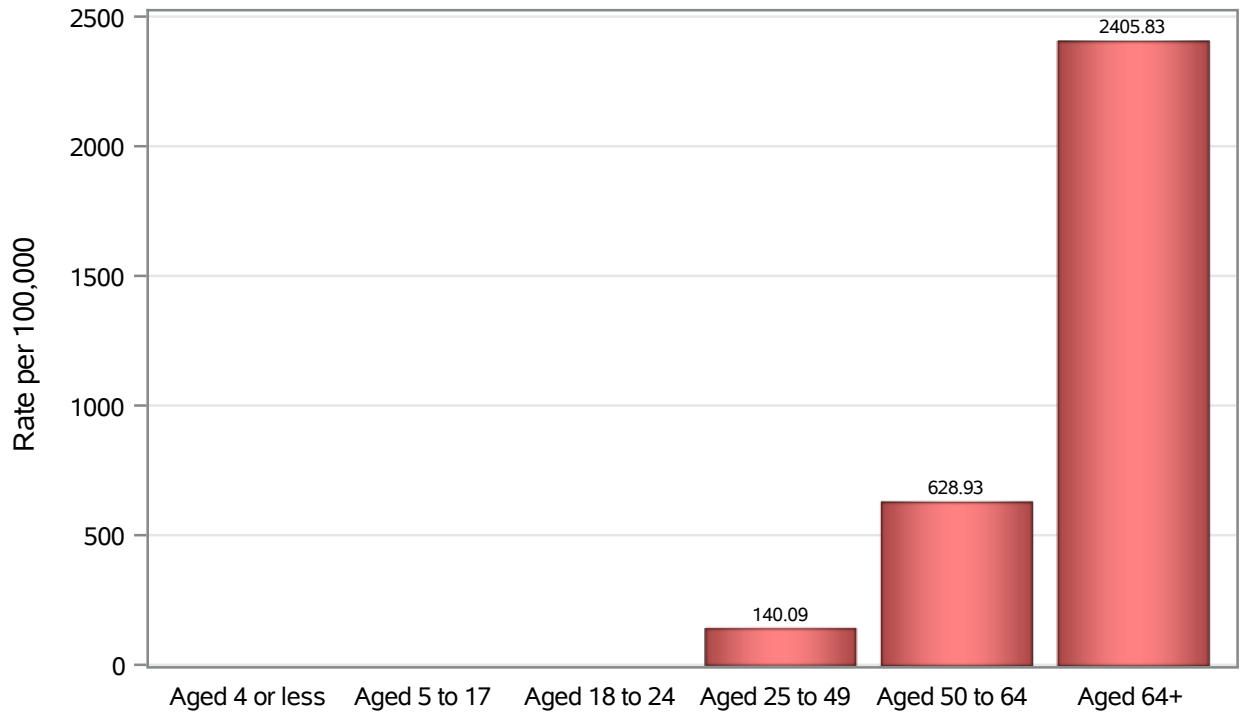


Investigations are ongoing; data are subject to change.

Reporting through 30JAN2023

North Las Vegas zip codes include 89030, 89031, 89032, 89033, 89036, 89081, 89084, 89085, 89086, 89087.

Death Age Rates in North Las Vegas



Investigations are ongoing; data are subject to change.

Reporting through 30JAN2023

North Las Vegas zip codes include 89030, 89031, 89032, 89033, 89036, 89081, 89084, 89085, 89086, 89087.

Table 5: Age and COVID19 in North Las Vegas

Case Status	Age Categories	N	%	Population	Rate per 100,000
Cases	Aged 4 or less	2067	3.1	17,642	11716
	Aged 5 to 17	9609	14.2	49,981	19225
	Aged 18 to 24	8310	12.3	22,914	36266
	Aged 25 to 49	29710	44.0	82,803	35880
	Aged 50 to 64	11775	17.5	36,729	32059
	Aged 64+	5978	8.9	23,734	25187
	Unknown	15	0.0	.	.
Hospitalizations	Aged 4 or less	42	1.3	17,642	238.07
	Aged 5 to 17	43	1.4	49,981	86.03
	Aged 18 to 24	82	2.6	22,914	357.86
	Aged 25 to 49	838	26.7	82,803	1012.0
	Aged 50 to 64	892	28.4	36,729	2428.6
	Aged 64+	1239	39.5	23,734	5220.4
	Deaths	Aged 4 or less	2	0.2	17,642
Aged 5 to 17		1	0.1	49,981	.
Aged 18 to 24		2	0.2	22,914	.
Aged 25 to 49		116	12.6	82,803	140.09
Aged 50 to 64		231	25.0	36,729	628.93
Aged 64+		571	61.9	23,734	2405.8

Note1: Population data source for calculating rate estimates: U.S. Census Bureau, ACS 5-year estimate.

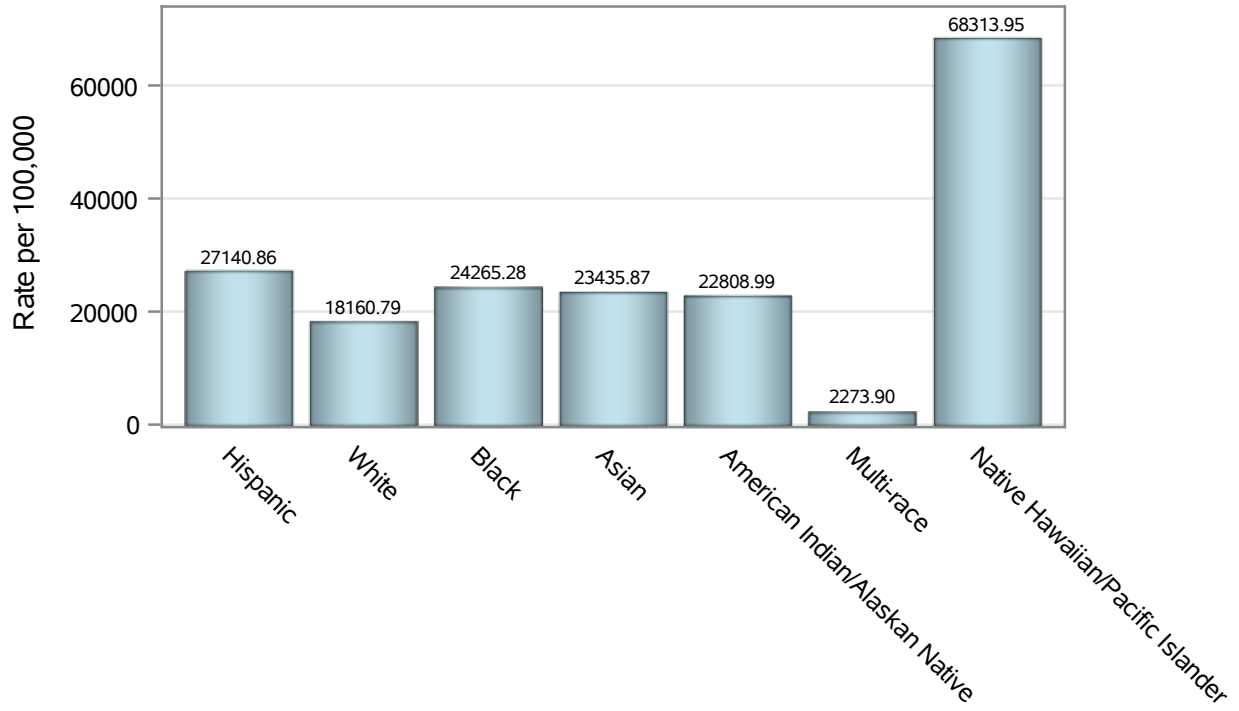
Note2: Rates for categories with fewer than 12 cases are suppressed due to high relative standard error.

Note3: Hospitalizations are regardless of deceased status; Deaths are regardless of hospitalization status

**Investigations are ongoing; data are subject to change.
Reporting through 30JAN2023**

North Las Vegas zip codes include 89030, 89031, 89032, 89033, 89036, 89081, 89084, 89085, 89086, 89087.

Case Race/Ethnicity Rates in North Las Vegas

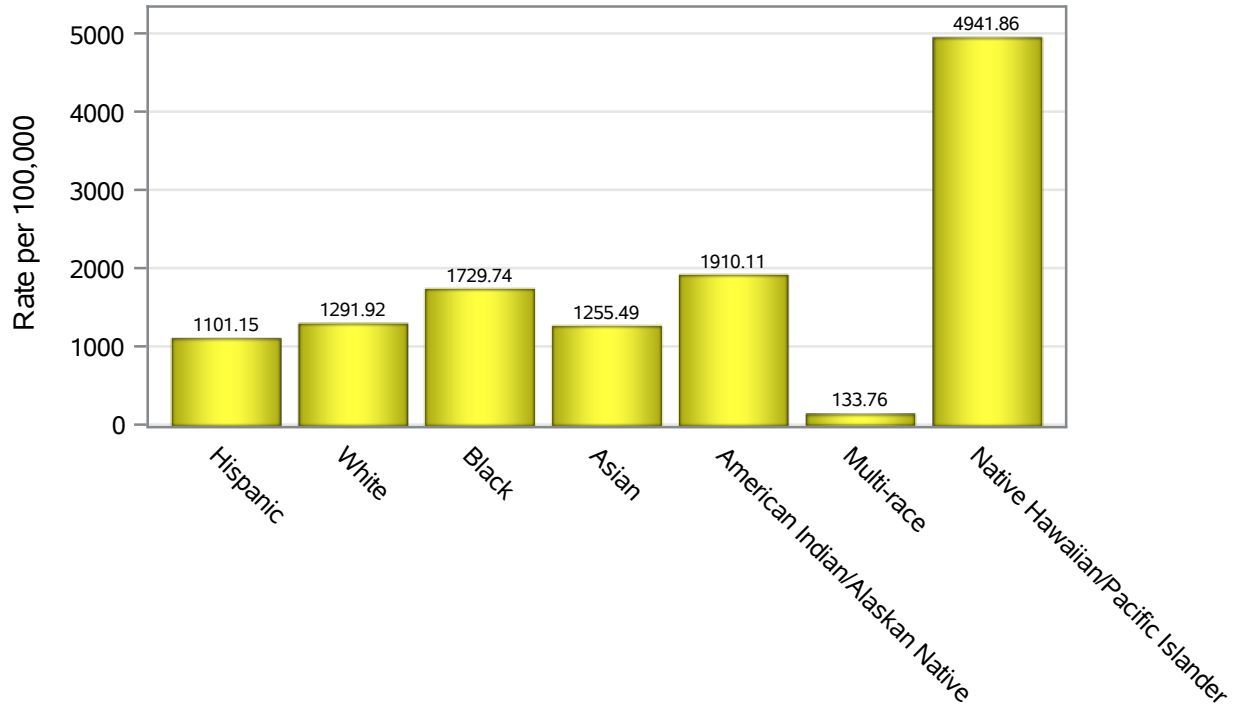


Investigations are ongoing; data are subject to change.

Reporting through 30JAN2023

North Las Vegas zip codes include 89030, 89031, 89032, 89033, 89036, 89081, 89084, 89085, 89086, 89087.

Hospitalization Race/Ethnicity Rates in North Las Vegas

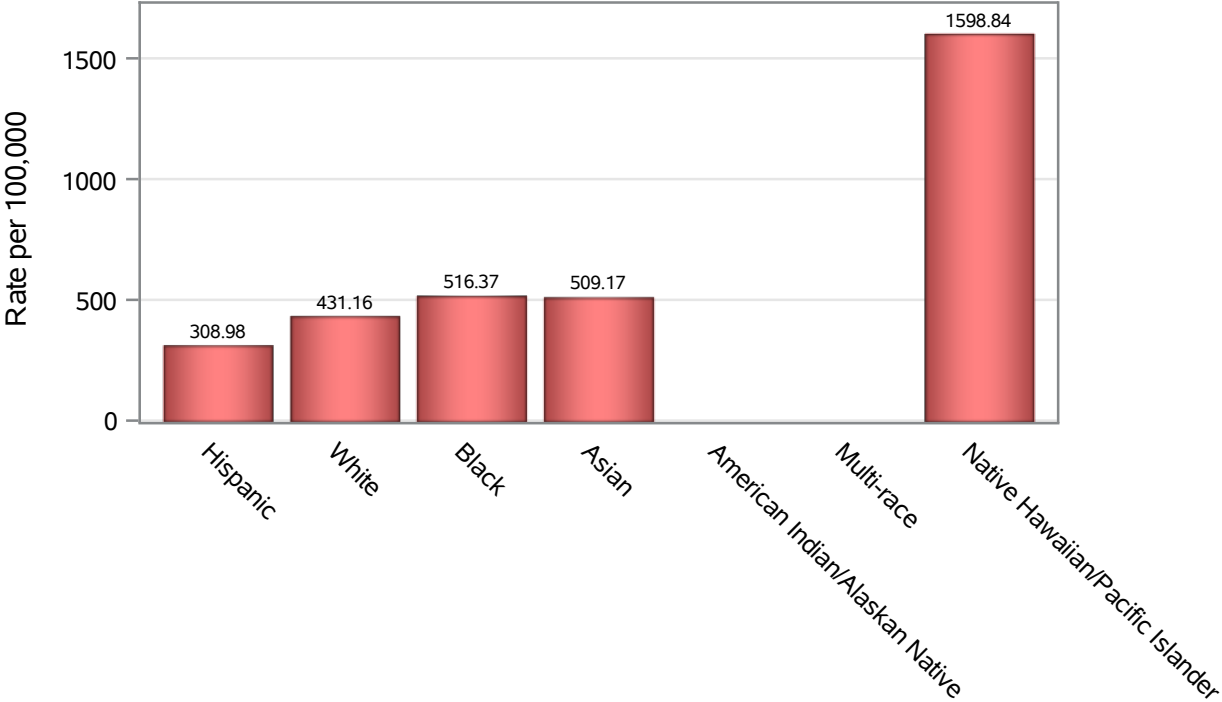


Investigations are ongoing; data are subject to change.

Reporting through 30JAN2023

North Las Vegas zip codes include 89030, 89031, 89032, 89033, 89036, 89081, 89084, 89085, 89086, 89087.

Death Race/Ethnicity Rates in North Las Vegas



Investigations are ongoing; data are subject to change.

Reporting through 30JAN2023

North Las Vegas zip codes include 89030, 89031, 89032, 89033, 89036, 89081, 89084, 89085, 89086, 89087.

Table 6: Race/Ethnicity and COVID19 in North Las Vegas

Case Status	Race Ethnicity Categories	N	%	Population	Rate per 100,000
Cases	Hispanic	26176	38.8	96,445	27141
	White	11541	17.1	63,549	18161
	Black	11419	16.9	47,059	24265
	Asian	3360	5.0	14,337	23436
	American Indian/Alaskan Native	203	0.3	890	22809
	Multi-race	221	0.3	9,719	2273.9
	Native Hawaiian/Pacific Islander	940	1.4	1,376	68314
	Unknown	13604	20.2	.	.
Hospitalizations	Hispanic	1062	33.9	96,445	1101.1
	White	821	26.2	63,549	1291.9
	Black	814	26.0	47,059	1729.7
	Asian	180	5.7	14,337	1255.5
	American Indian/Alaskan Native	17	0.5	890	1910.1
	Multi-race	13	0.4	9,719	133.76
	Native Hawaiian/Pacific Islander	68	2.2	1,376	4941.9
	Unknown	161	5.1	.	.
Deaths	Hispanic	298	32.3	96,445	308.98
	White	274	29.7	63,549	431.16
	Black	243	26.3	47,059	516.37
	Asian	73	7.9	14,337	509.17
	American Indian/Alaskan Native	6	0.7	890	.
	Multi-race	7	0.8	9,719	.
	Native Hawaiian/Pacific Islander	22	2.4	1,376	1598.8

Note1: Population data source for calculating rate estimates: U.S. Census Bureau, ACS 5-year estimate.

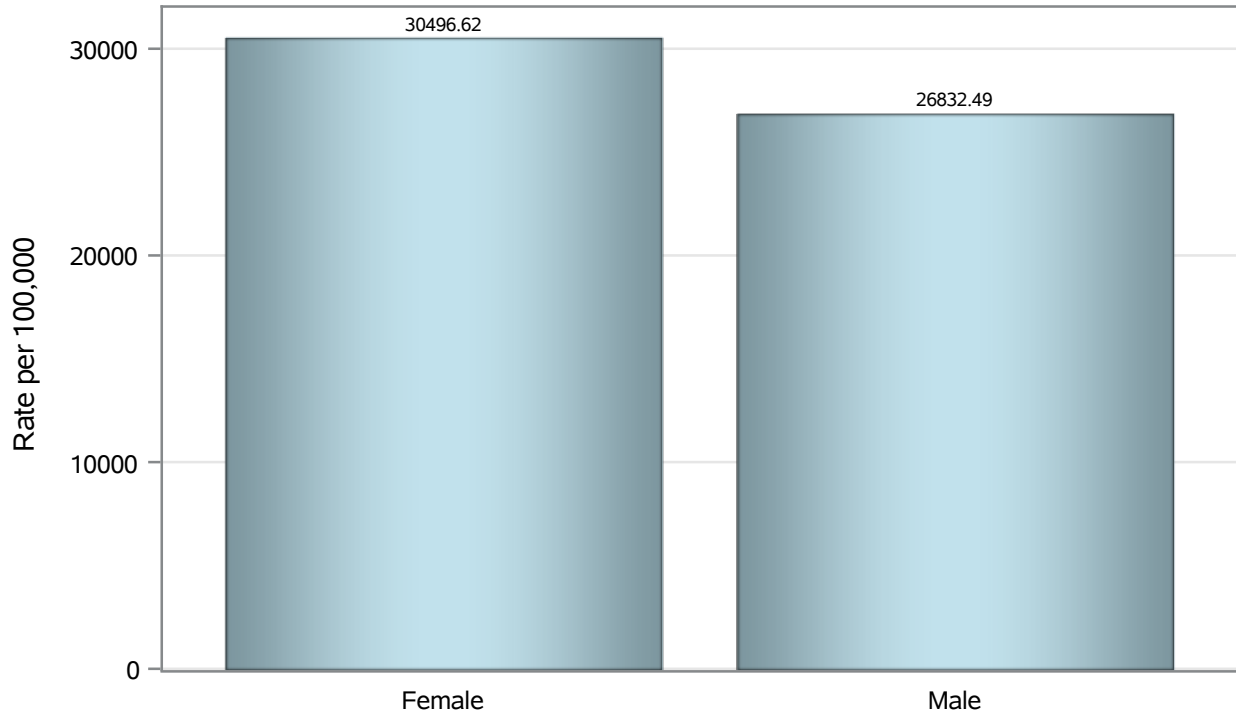
Note2: Rates for categories with fewer than 12 cases are suppressed due to high relative standard error.

Note3: Hospitalizations are regardless of deceased status; Deaths are regardless of hospitalization status

**Investigations are ongoing; data are subject to change.
Reporting through 30JAN2023**

North Las Vegas zip codes include 89030, 89031, 89032, 89033, 89036, 89081, 89084, 89085, 89086, 89087.

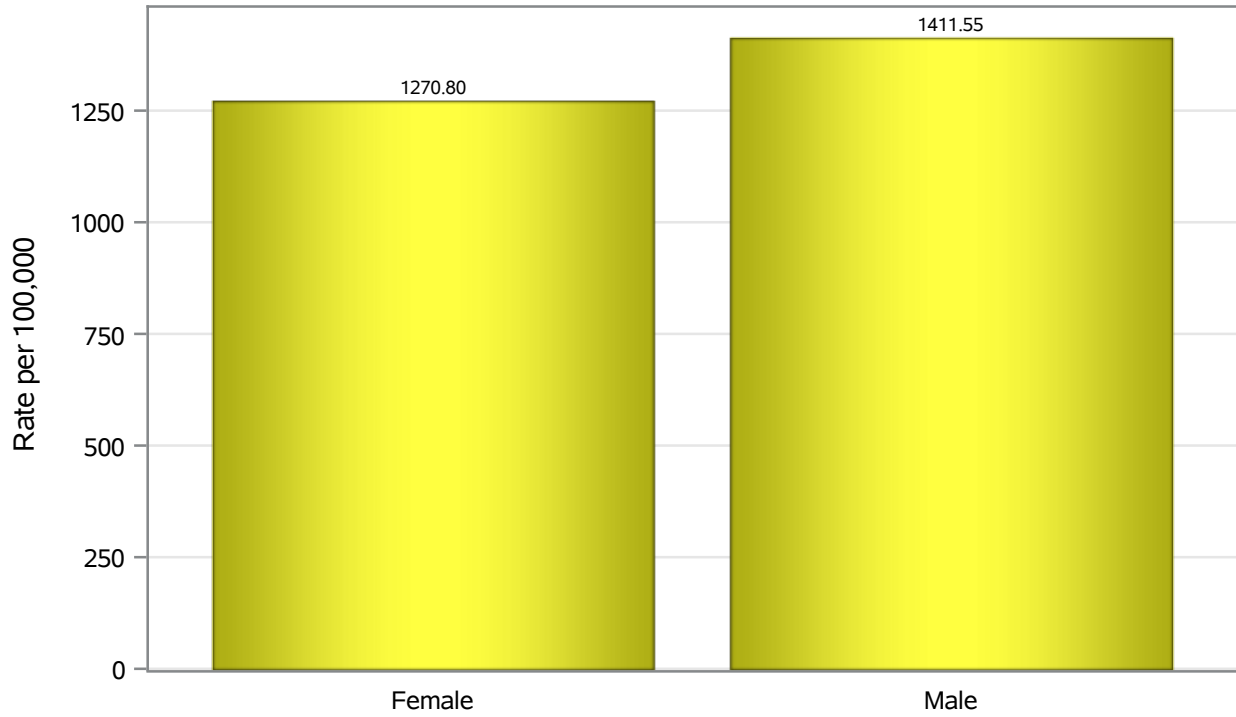
Case Birth Sex Rates in North Las Vegas



Investigations are ongoing; data are subject to change.
Reporting through 30JAN2023

North Las Vegas zip codes include 89030, 89031, 89032, 89033, 89036, 89081, 89084, 89085, 89086, 89087.

Hospitalization Birth Sex Rates in North Las Vegas

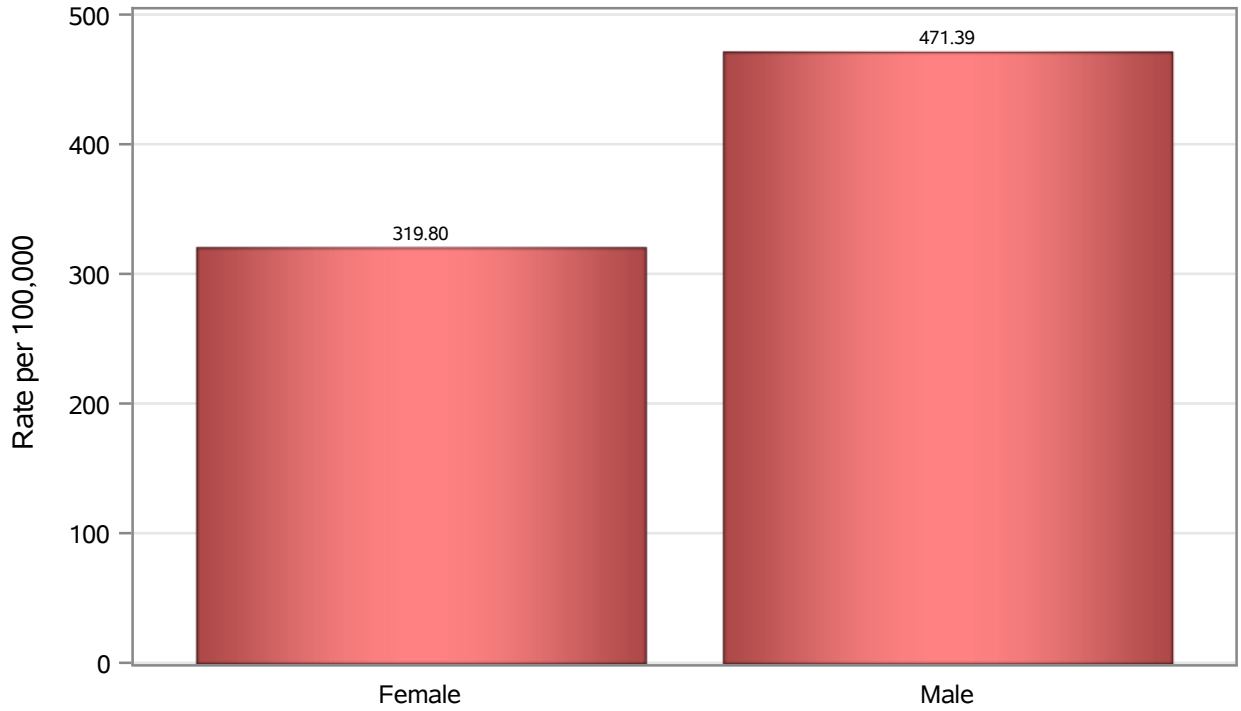


Investigations are ongoing; data are subject to change.

Reporting through 30JAN2023

North Las Vegas zip codes include 89030, 89031, 89032, 89033, 89036, 89081, 89084, 89085, 89086, 89087.

Death Birth Sex Rates in North Las Vegas



Investigations are ongoing; data are subject to change.

Reporting through 30JAN2023

North Las Vegas zip codes include 89030, 89031, 89032, 89033, 89036, 89081, 89084, 89085, 89086, 89087.

Table 7: Birth Sex and COVID19 in North Las Vegas

Case Status	Birth Sex Categories	N	%	Population	Rate per 100,000
Cases	Female	36237	53.7	118823	30497
	Male	30852	45.7	114980	26832
	Unknown	375	0.6	.	.
Hospitalizations	Female	1510	48.2	118823	1270.8
	Male	1623	51.8	114980	1411.5
	Unknown	3	0.1	.	.
Deaths	Female	380	41.2	118823	319.80
	Male	542	58.7	114980	471.39
	Unknown	1	0.1	.	.

Note1: Population data source for calculating rate estimates: U.S. Census Bureau, ACS 5-year estimate.

Note2: Rates for categories with fewer than 12 cases are suppressed due to high relative standard error.

Note3: Hospitalizations are regardless of deceased status; Deaths are regardless of hospitalization status

**Investigations are ongoing; data are subject to change.
Reporting through 30JAN2023**

North Las Vegas zip codes include 89030, 89031, 89032, 89033, 89036, 89081, 89084, 89085, 89086, 89087.