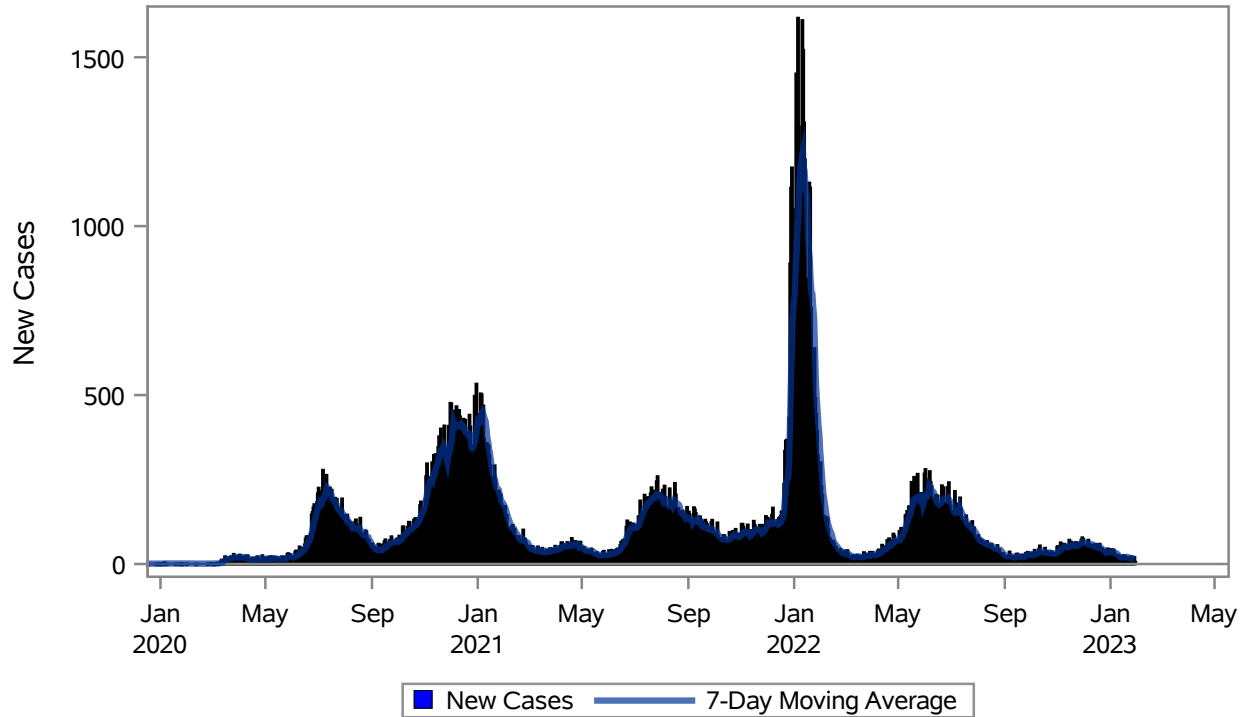


COVID19 Cases for Henderson, 7-Day Moving Average



Investigations are ongoing; data are subject to change.

Reporting through 30JAN2023

Henderson zip codes include 89002, 89011, 89012, 89014, 89015, 89044, 89052, 89074, 89119, 89120, 89122, 89123, 89124, 89183.

Table 1: New COVID19 Cases and 7-Day Moving Average in Henderson, Previous Two Weeks

Date (Daily)	New Cases	7-Day Moving Average
17JAN2023	23	19.71
18JAN2023	20	20.29
19JAN2023	19	20.71
20JAN2023	19	20.71
21JAN2023	15	19.43
22JAN2023	14	19.29
23JAN2023	16	18.00
24JAN2023	22	17.86
25JAN2023	11	16.57
26JAN2023	15	16.00
27JAN2023	10	14.71
28JAN2023	20	15.43

Note1: Event Date is calculated as follows based on completed information:

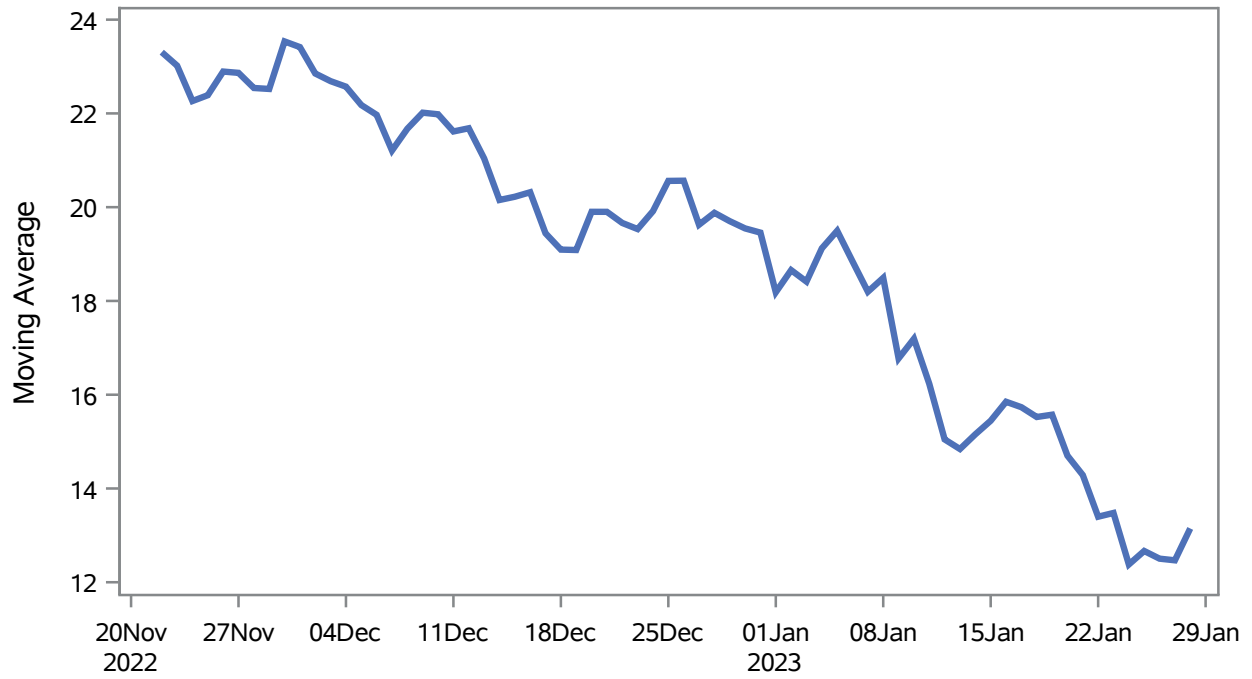
1) Disease onset date 2) Disease diagnosis date 3) Lab result collection date 4) Report date to SNHD.

Investigations are ongoing; data are subject to change.

Reporting through 30JAN2023

Henderson zip codes include 89002, 89011, 89012, 89014, 89015, 89044, 89052, 89074, 89119, 89120, 89122, 89123, 89124, 89183.

Percent of People Receiving COVID-19 Viral Tests Who Have Positive Results in Henderson



Investigations are ongoing; data are subject to change.

Reporting through 30JAN2023

Henderson zip codes include 89002, 89011, 89012, 89014, 89015, 89044, 89052, 89074, 89119, 89120, 89122, 89123, 89124, 89183.

Table 2: Percent of People Receiving COVID-19 Viral Tests Who Have Positive Results in Henderson

Collection Date	Positive	Negative	Equivocal	Total	% Positivity	7-Day Moving Average
14JAN2023	16	87		103	15.53	15.2
15JAN2023	21	94		115	18.26	15.4
16JAN2023	20	114		134	14.93	15.8
17JAN2023	34	156		190	17.89	15.7
18JAN2023	23	140	1	164	14.02	15.5
19JAN2023	20	131		151	13.25	15.6
20JAN2023	11	111		122	9.02	14.7
21JAN2023	12	83		95	12.63	14.3
22JAN2023	10	73		83	12.05	13.4
23JAN2023	24	131		155	15.48	13.5
24JAN2023	15	132		147	10.20	12.4
25JAN2023	17	89		106	16.04	12.7
26JAN2023	15	109		124	12.10	12.5
27JAN2023	10	104		114	8.77	12.5
28JAN2023	20	95		115	17.39	13.1

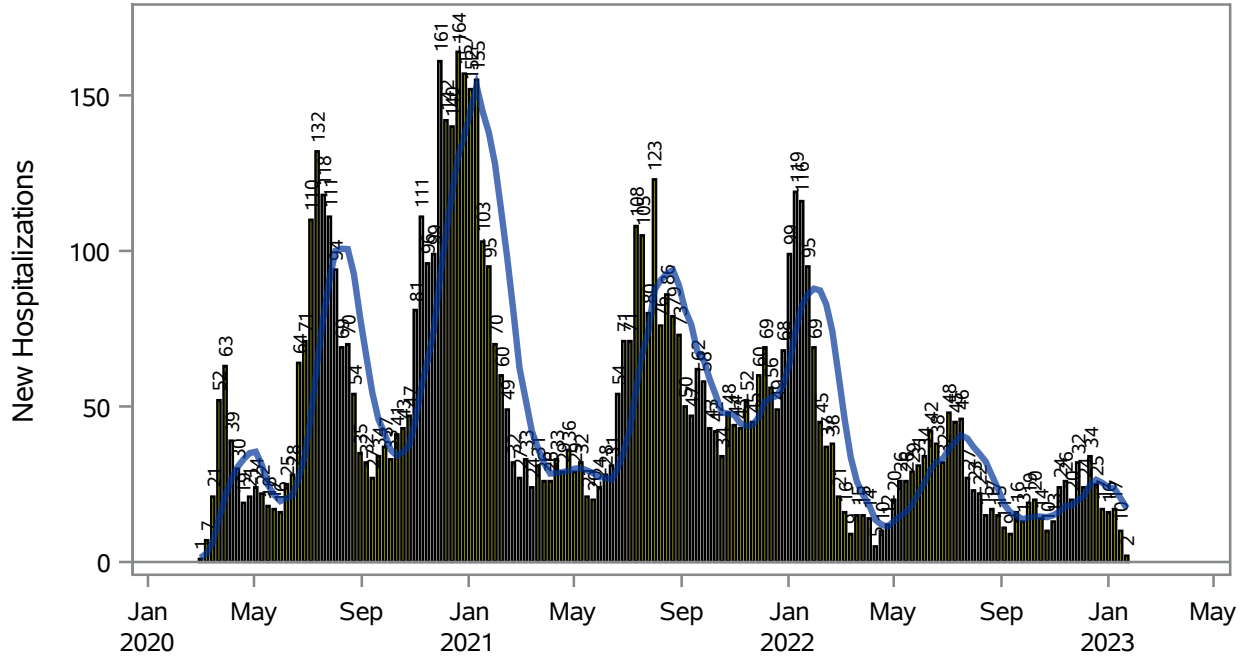
Note: Testing Data includes a 3 day delay

Investigations are ongoing; data are subject to change.

Reporting through 30JAN2023

Henderson zip codes include 89002, 89011, 89012, 89014, 89015, 89044, 89052, 89074, 89119, 89120, 89122, 89123, 89124, 89183.

COVID19 Hospitalizations for Henderson, 7-Day Moving Average



New Hospitalizations
 7-Day Moving Average

Investigations are ongoing; data are subject to change.

Reporting through 30JAN2023

Henderson zip codes include 89002, 89011, 89012, 89014, 89015, 89044, 89052, 89074, 89119, 89120, 89122, 89123, 89124, 89183.

Table 3: New COVID19-Related Hospitalizations and 7-Day Moving Average in Henderson, previous month

Week	Hospitalizations	7-Day Moving Average
01JAN2023	16	24.0
08JAN2023	17	23.6
15JAN2023	10	20.4
22JAN2023	2	17.3

Note1: Admission Date is calculated as follows based on completed information:
A) COVID19 Case is hospitalized B) COVID19 Case has a hospital admission date.

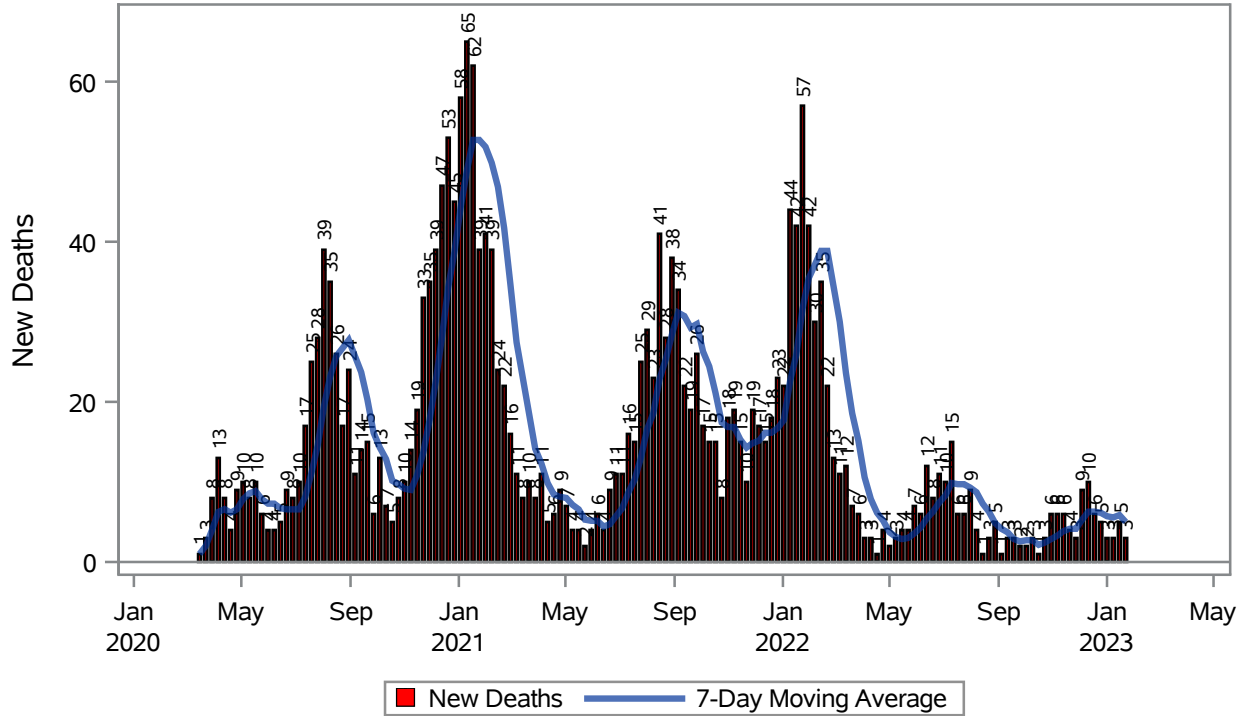
If admission date is missing, then the following is substituted temporarily, in order:
1) Disease onset date 2) Disease diagnosis date 3) Lab result collection date 4) Report date to SNHD.

Investigations are ongoing; data are subject to change.

Reporting through 30JAN2023

Henderson zip codes include 89002, 89011, 89012, 89014, 89015, 89044, 89052, 89074, 89119, 89120, 89122, 89123, 89124, 89183.

COVID19 Deaths for Henderson, 7-Day Moving Average



Investigations are ongoing; data are subject to change.

Reporting through 30JAN2023

Henderson zip codes include 89002, 89011, 89012, 89014, 89015, 89044, 89052, 89074, 89119, 89120, 89122, 89123, 89124, 89183.

Table 4: New COVID19-Related Deaths and 7-Day Moving Average in Henderson, Previous Month

Week	Deaths	7-Day Moving Average
01JAN2023	3	5.71
08JAN2023	3	5.57
15JAN2023	5	5.86
22JAN2023	3	5.00

Note1: Date of Death is calculated as follows based on completed information:
A) COVID19 Case is reported as deceased B) COVID19 Case has a reported date of death.

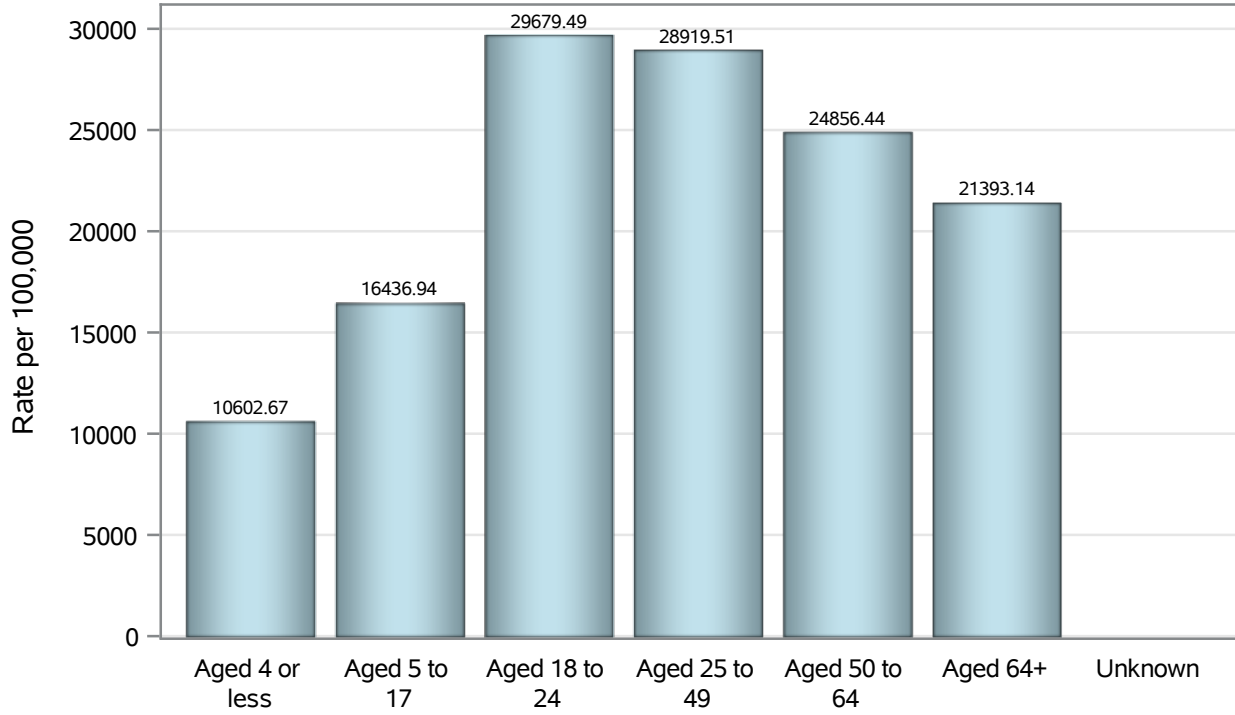
If date of death is missing, then the following is substituted temporarily, in order:
1) Disease onset date 2) Disease diagnosis date
3) Lab result collection date 4) Report date to SNHD.

Investigations are ongoing; data are subject to change.

Reporting through 30JAN2023

Henderson zip codes include 89002, 89011, 89012, 89014, 89015, 89044, 89052, 89074, 89119, 89120, 89122, 89123, 89124, 89183.

Case Age Rates in Henderson

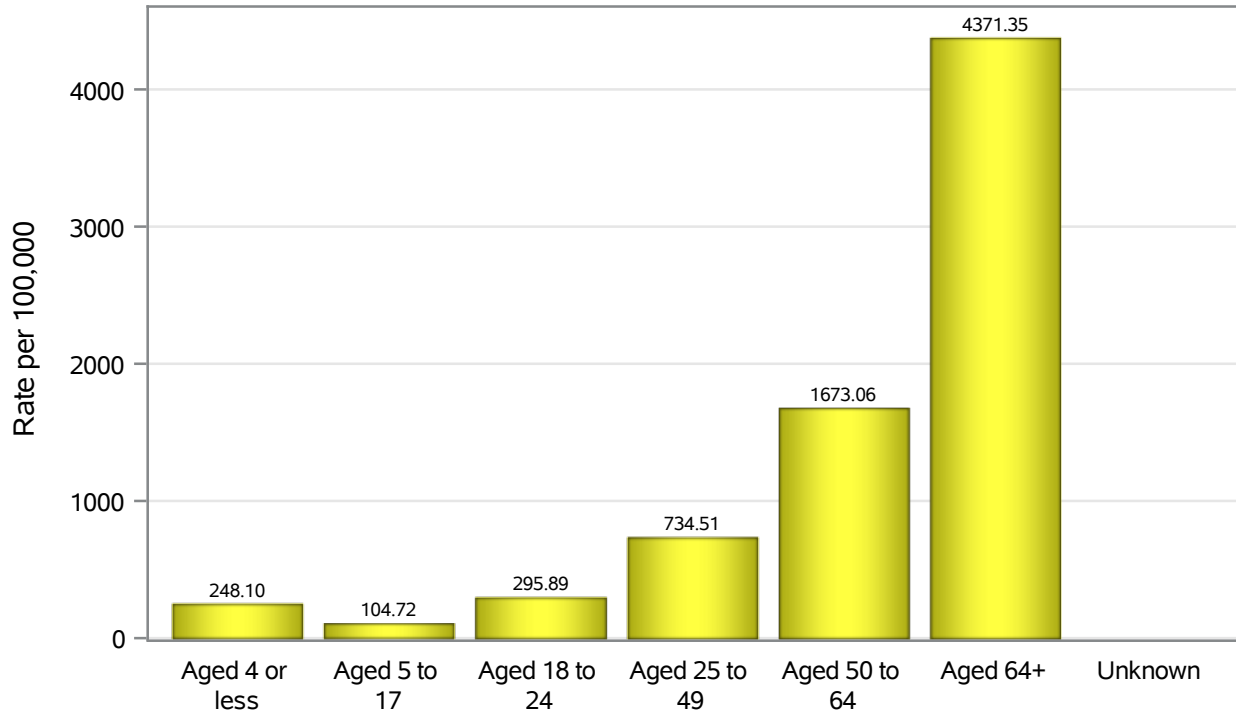


Investigations are ongoing; data are subject to change.

Reporting through 30JAN2023

Henderson zip codes include 89002, 89011, 89012, 89014, 89015, 89044, 89052, 89074, 89119, 89120, 89122, 89123, 89124, 89183.

Hospitalization Age Rates in Henderson

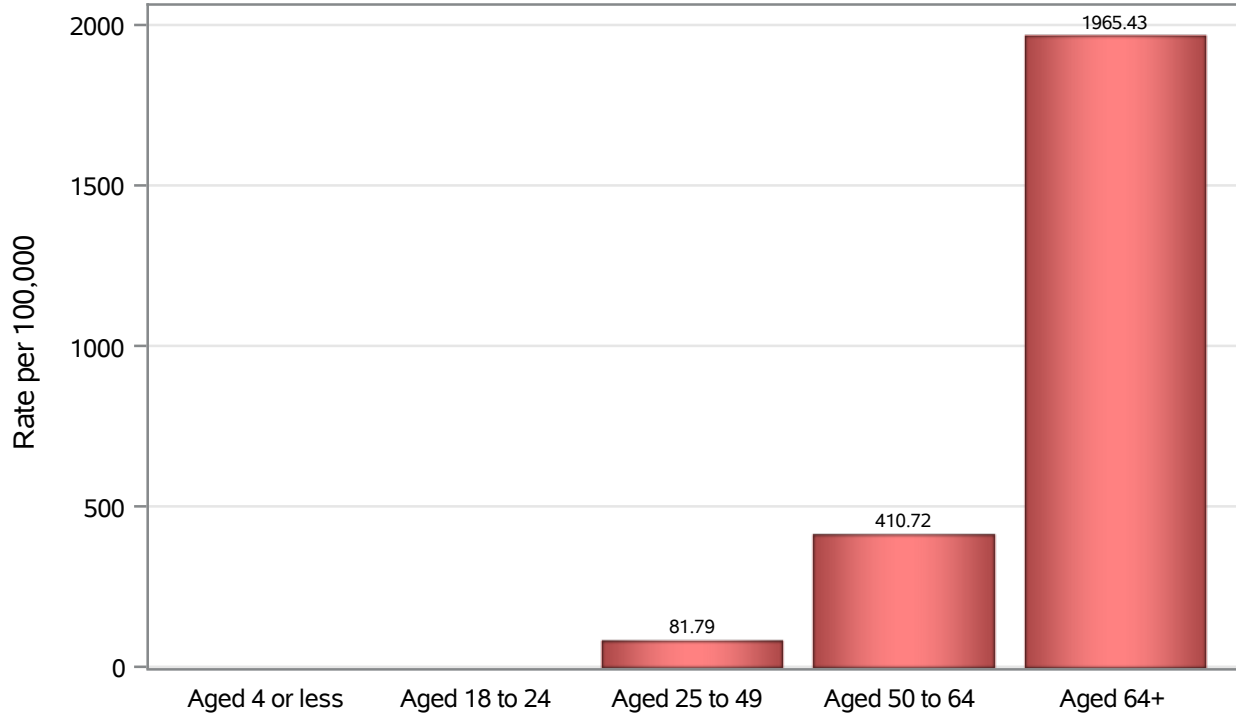


Investigations are ongoing; data are subject to change.

Reporting through 30JAN2023

Henderson zip codes include 89002, 89011, 89012, 89014, 89015, 89044, 89052, 89074, 89119, 89120, 89122, 89123, 89124, 89183.

Death Age Rates in Henderson



Investigations are ongoing; data are subject to change.

Reporting through 30JAN2023

Henderson zip codes include 89002, 89011, 89012, 89014, 89015, 89044, 89052, 89074, 89119, 89120, 89122, 89123, 89124, 89183.

Table 5: Age and COVID19 in Henderson

Case Status	Age Categories	N	%	Population	Rate per 100,000
Cases	Aged 4 or less	3077	2.4	29,021	10603
	Aged 5 to 17	13499	10.6	82,126	16437
	Aged 18 to 24	13140	10.3	44,273	29679
	Aged 25 to 49	54098	42.3	187064	28920
	Aged 50 to 64	25539	20.0	102746	24856
	Aged 64+	18504	14.5	86,495	21393
	Unknown	29	0.0	.	.
Hospitalizations	Aged 4 or less	72	1.0	29,021	248.10
	Aged 5 to 17	86	1.2	82,126	104.72
	Aged 18 to 24	131	1.8	44,273	295.89
	Aged 25 to 49	1374	19.2	187064	734.51
	Aged 50 to 64	1719	24.0	102746	1673.1
	Aged 64+	3781	52.8	86,495	4371.4
	Unknown	1	0.0	.	.
Deaths	Aged 4 or less	1	0.0	29,021	.
	Aged 18 to 24	4	0.2	44,273	.
	Aged 25 to 49	153	6.7	187064	81.79
	Aged 50 to 64	422	18.5	102746	410.72
	Aged 64+	1700	74.6	86,495	1965.4

Note1: Population data source for calculating rate estimates: U.S. Census Bureau, ACS 5-year estimate.

Note2: Rates for categories with fewer than 12 cases are suppressed due to high relative standard error.

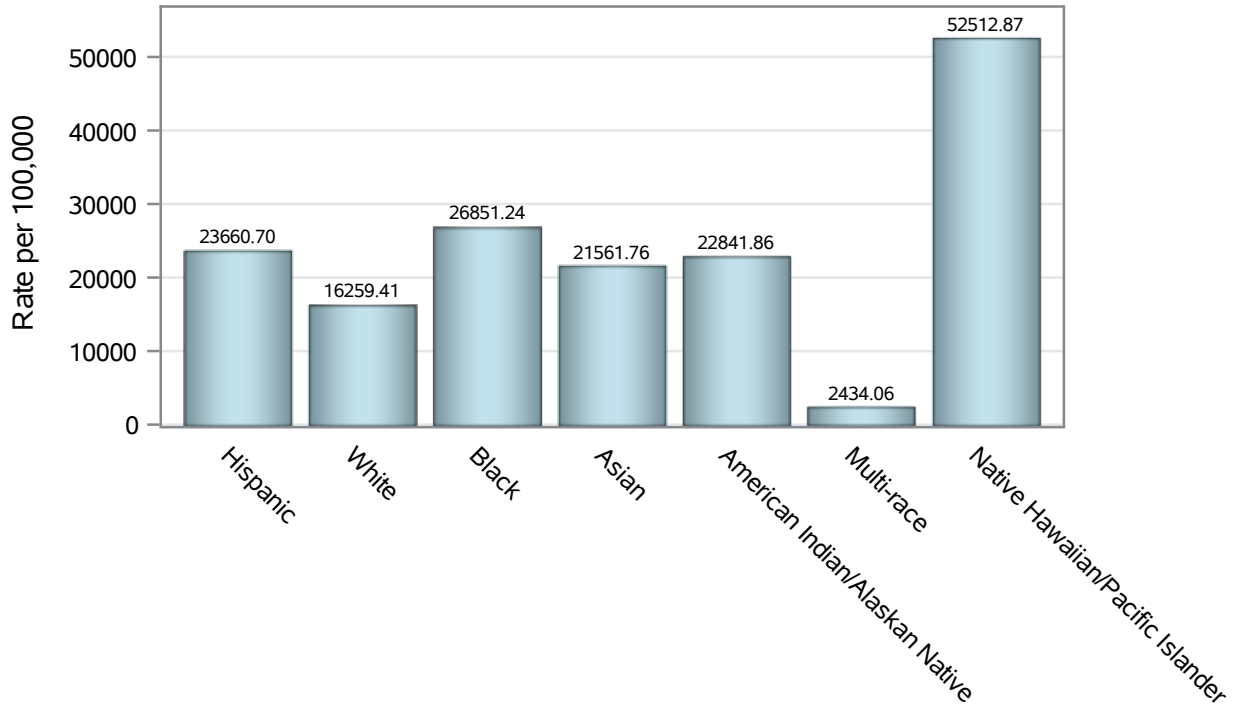
Note3: Hospitalizations are regardless of deceased status; Deaths are regardless of hospitalization status

Investigations are ongoing; data are subject to change.

Reporting through 30JAN2023

Henderson zip codes include 89002, 89011, 89012, 89014, 89015, 89044, 89052, 89074, 89119, 89120, 89122, 89123, 89124, 89183.

Case Race/Ethnicity Rates in Henderson

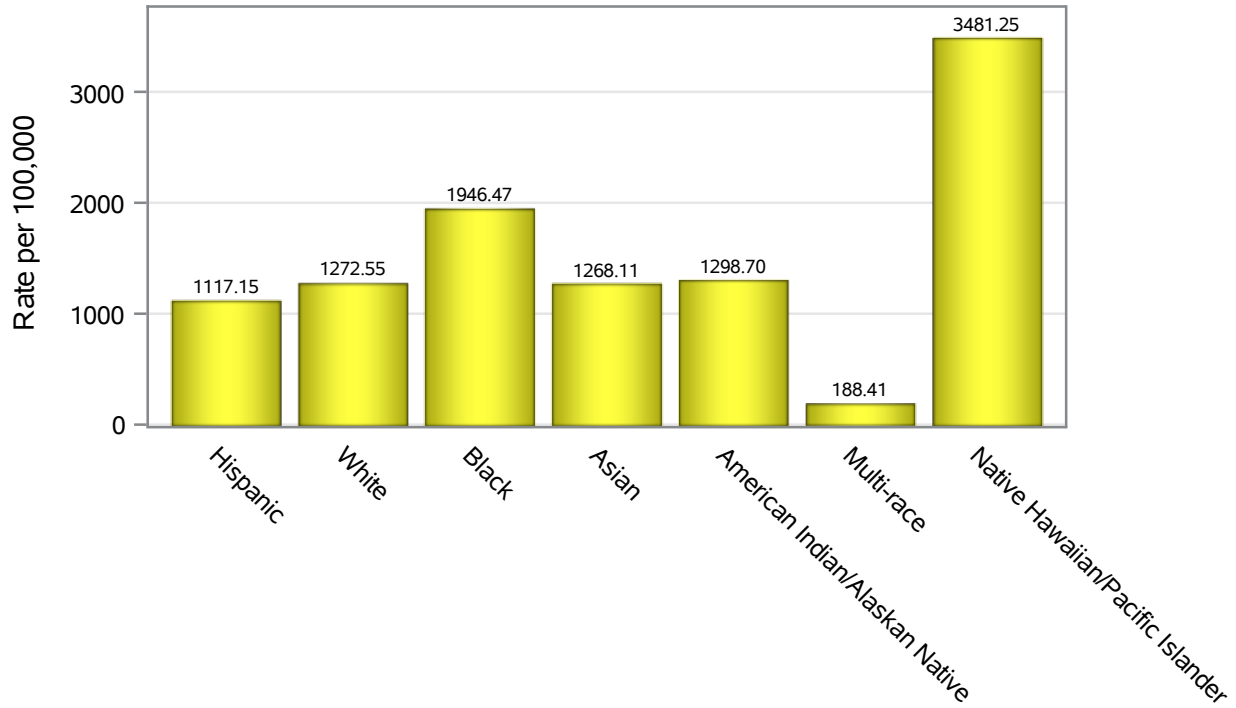


Investigations are ongoing; data are subject to change.

Reporting through 30JAN2023

Henderson zip codes include 89002, 89011, 89012, 89014, 89015, 89044, 89052, 89074, 89119, 89120, 89122, 89123, 89124, 89183.

Hospitalization Race/Ethnicity Rates in Henderson

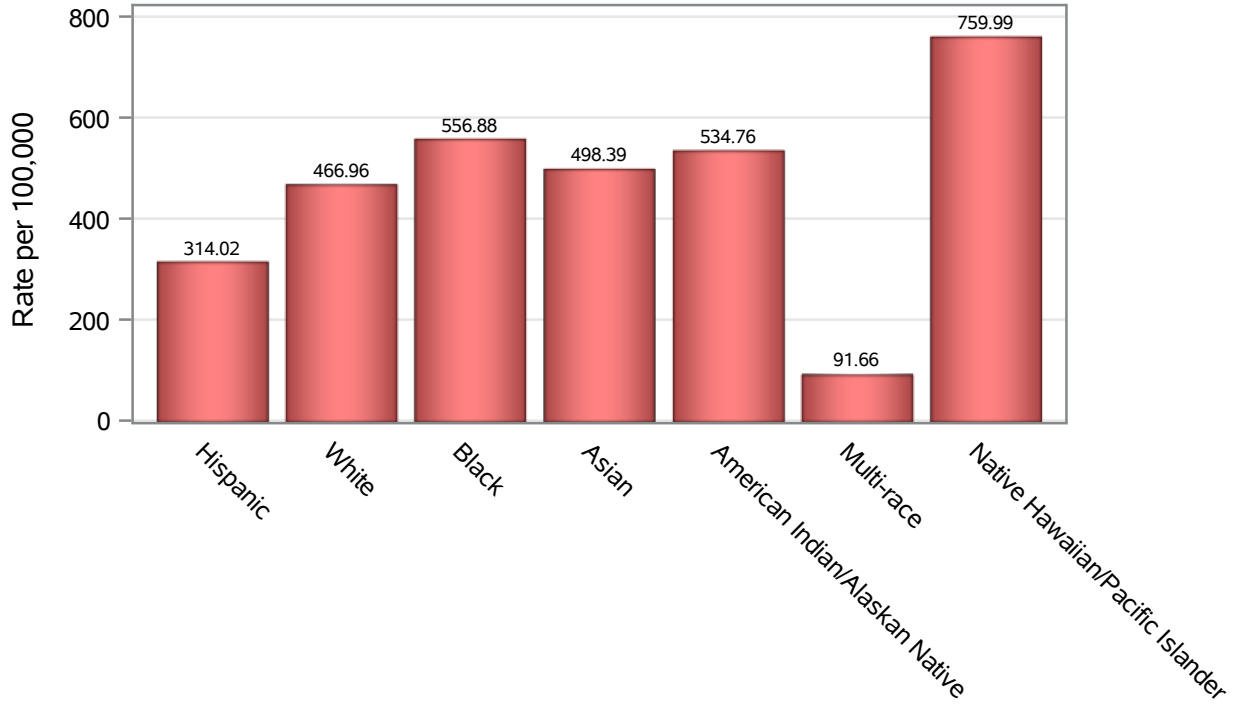


Investigations are ongoing; data are subject to change.

Reporting through 30JAN2023

Henderson zip codes include 89002, 89011, 89012, 89014, 89015, 89044, 89052, 89074, 89119, 89120, 89122, 89123, 89124, 89183.

Death Race/Ethnicity Rates in Henderson



Investigations are ongoing; data are subject to change.

Reporting through 30JAN2023

Henderson zip codes include 89002, 89011, 89012, 89014, 89015, 89044, 89052, 89074, 89119, 89120, 89122, 89123, 89124, 89183.

Table 6: Race/Ethnicity and COVID19 in Henderson

Case Status	Race Ethnicity Categories	N	%	Population	Rate per 100,000
Cases	Hispanic	28783	22.5	121649	23661
	White	47390	37.1	291462	16259
	Black	10222	8.0	38,069	26851
	Asian	11205	8.8	51,967	21562
	American Indian/Alaskan Native	598	0.5	2,618	22842
	Multi-race	478	0.4	19,638	2434.1
	Native Hawaiian/Pacific Islander	2142	1.7	4,079	52513
	Unknown	27068	21.2	.	.
Hospitalizations	Hispanic	1359	19.0	121649	1117.1
	White	3709	51.8	291462	1272.6
	Black	741	10.3	38,069	1946.5
	Asian	659	9.2	51,967	1268.1
	American Indian/Alaskan Native	34	0.5	2,618	1298.7
	Multi-race	37	0.5	19,638	188.41
	Native Hawaiian/Pacific Islander	142	2.0	4,079	3481.2
	Unknown	483	6.7	.	.
Deaths	Hispanic	382	16.8	121649	314.02
	White	1361	59.7	291462	466.96
	Black	212	9.3	38,069	556.88
	Asian	259	11.4	51,967	498.39
	American Indian/Alaskan Native	14	0.6	2,618	534.76
	Multi-race	18	0.8	19,638	91.66
	Native Hawaiian/Pacific Islander	31	1.4	4,079	759.99
	Unknown	3	0.1	.	.

Note1: Population data source for calculating rate estimates: U.S. Census Bureau, ACS 5-year estimate.

Note2: Rates for categories with fewer than 12 cases are suppressed due to high relative standard error.

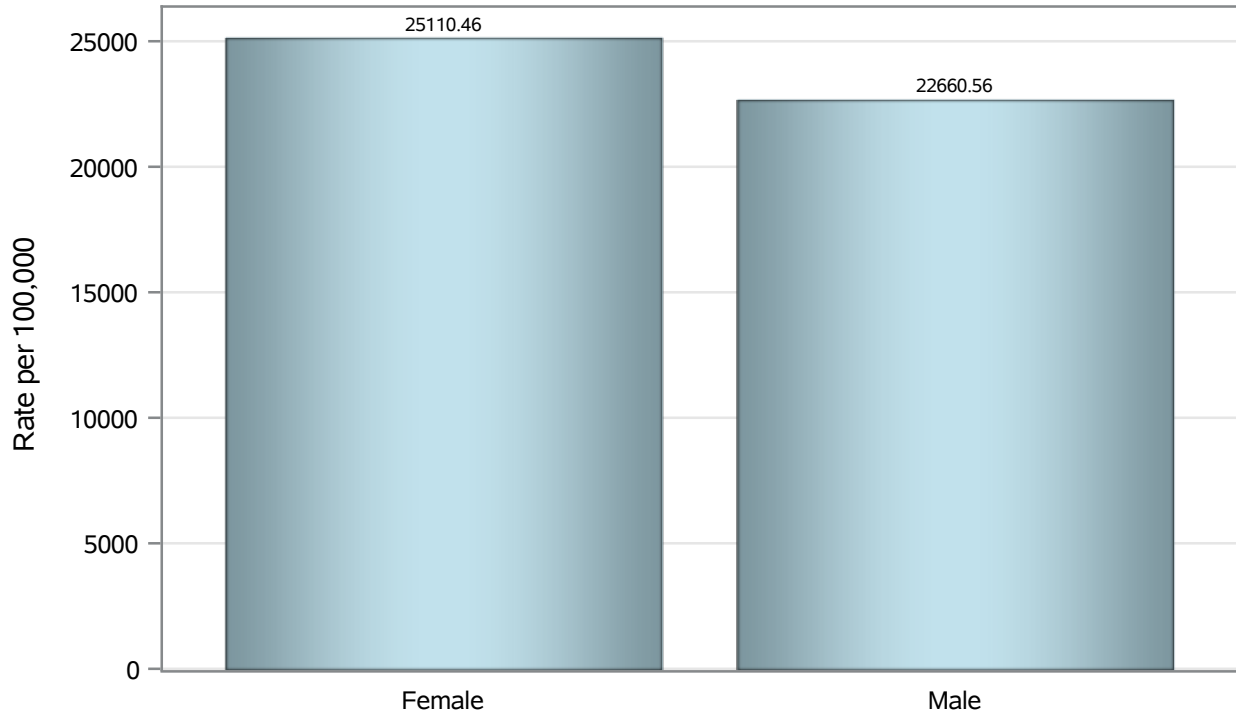
Note3: Hospitalizations are regardless of deceased status; Deaths are regardless of hospitalization status

Investigations are ongoing; data are subject to change.

Reporting through 30JAN2023

Henderson zip codes include 89002, 89011, 89012, 89014, 89015, 89044, 89052, 89074, 89119, 89120, 89122, 89123, 89124, 89183.

Case Birth Sex Rates in Henderson

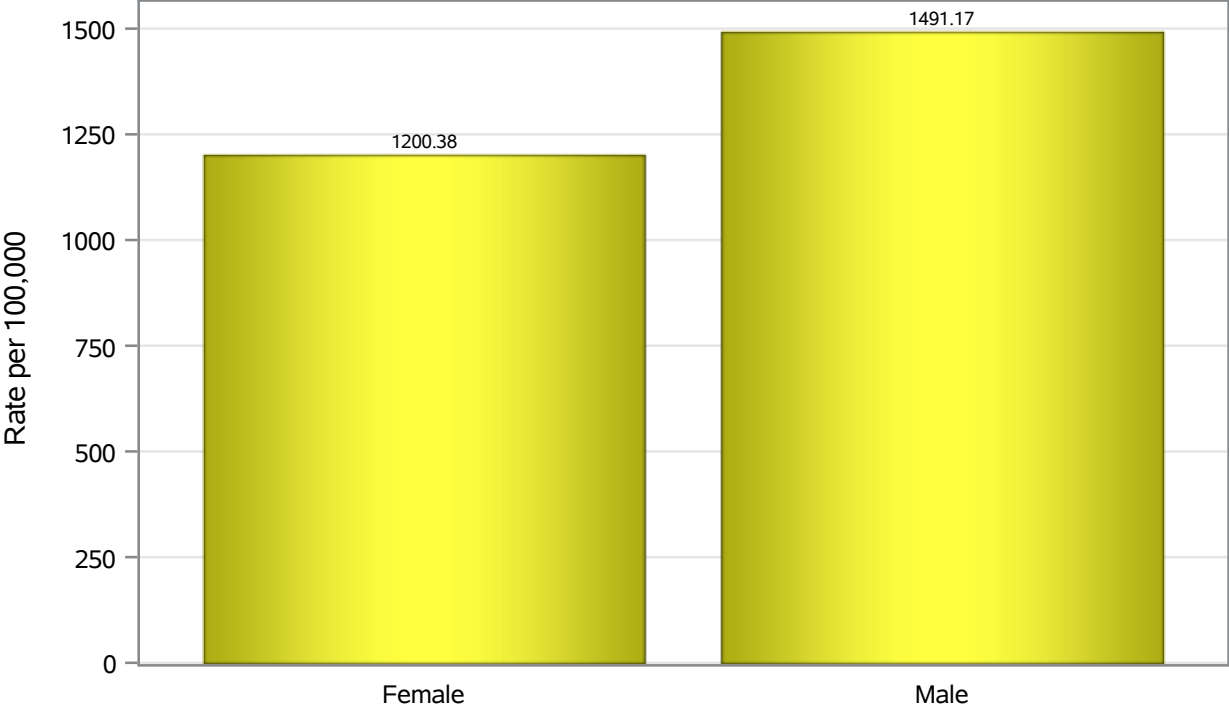


Investigations are ongoing; data are subject to change.

Reporting through 30JAN2023

Henderson zip codes include 89002, 89011, 89012, 89014, 89015, 89044, 89052, 89074, 89119, 89120, 89122, 89123, 89124, 89183.

Hospitalization Birth Sex Rates in Henderson

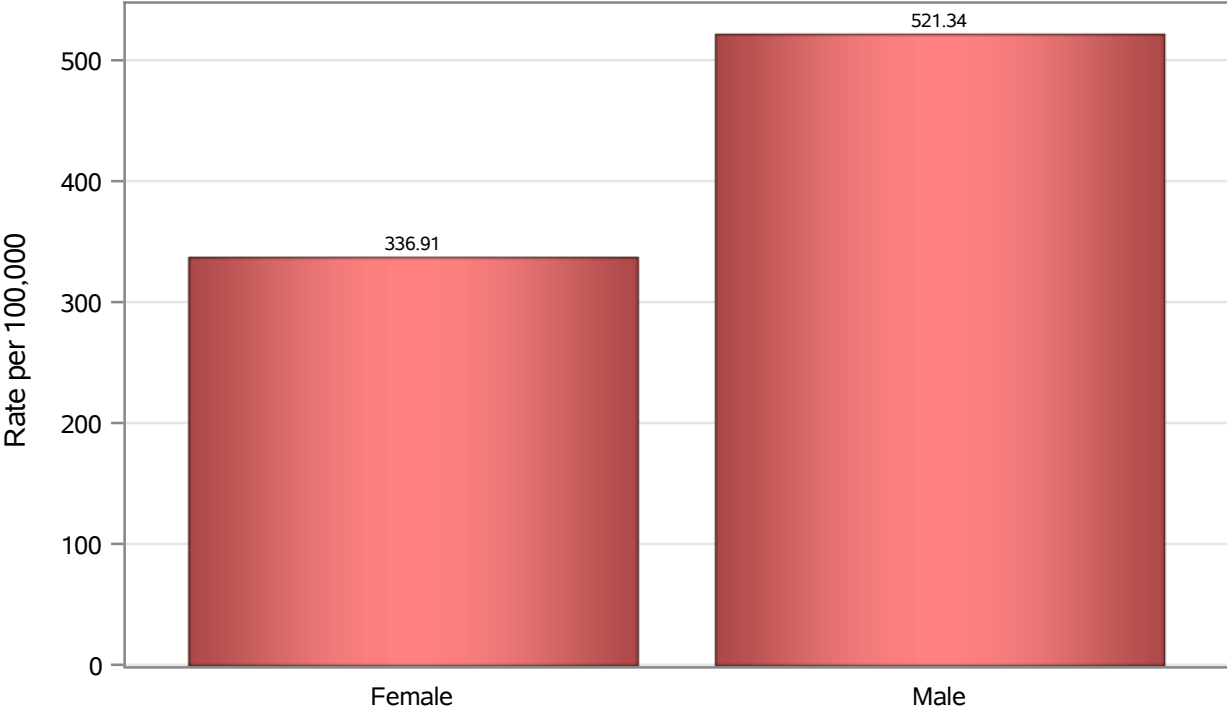


Investigations are ongoing; data are subject to change.

Reporting through 30JAN2023

Henderson zip codes include 89002, 89011, 89012, 89014, 89015, 89044, 89052, 89074, 89119, 89120, 89122, 89123, 89124, 89183.

Death Birth Sex Rates in Henderson



Investigations are ongoing; data are subject to change.
Reporting through 30JAN2023

Henderson zip codes include 89002, 89011, 89012, 89014, 89015, 89044, 89052, 89074, 89119, 89120, 89122, 89123, 89124, 89183.

Table 7: Birth Sex and COVID19 in Henderson

Case Status	Birth Sex Categories	N	%	Population	Rate per 100,000
Cases	Female	67003	52.4	266833	25110
	Male	60026	46.9	264892	22661
	Unknown	857	0.7	.	.
Hospitalizations	Female	3203	44.7	266833	1200.4
	Male	3950	55.1	264892	1491.2
	Unknown	11	0.2	.	.
Deaths	Female	899	39.4	266833	336.91
	Male	1381	60.6	264892	521.34

Note1: Population data source for calculating rate estimates: U.S. Census Bureau, ACS 5-year estimate.

Note2: Rates for categories with fewer than 12 cases are suppressed due to high relative standard error.

Note3: Hospitalizations are regardless of deceased status; Deaths are regardless of hospitalization status

Investigations are ongoing; data are subject to change.

Reporting through 30JAN2023

Henderson zip codes include 89002, 89011, 89012, 89014, 89015, 89044, 89052, 89074, 89119, 89120, 89122, 89123, 89124, 89183.