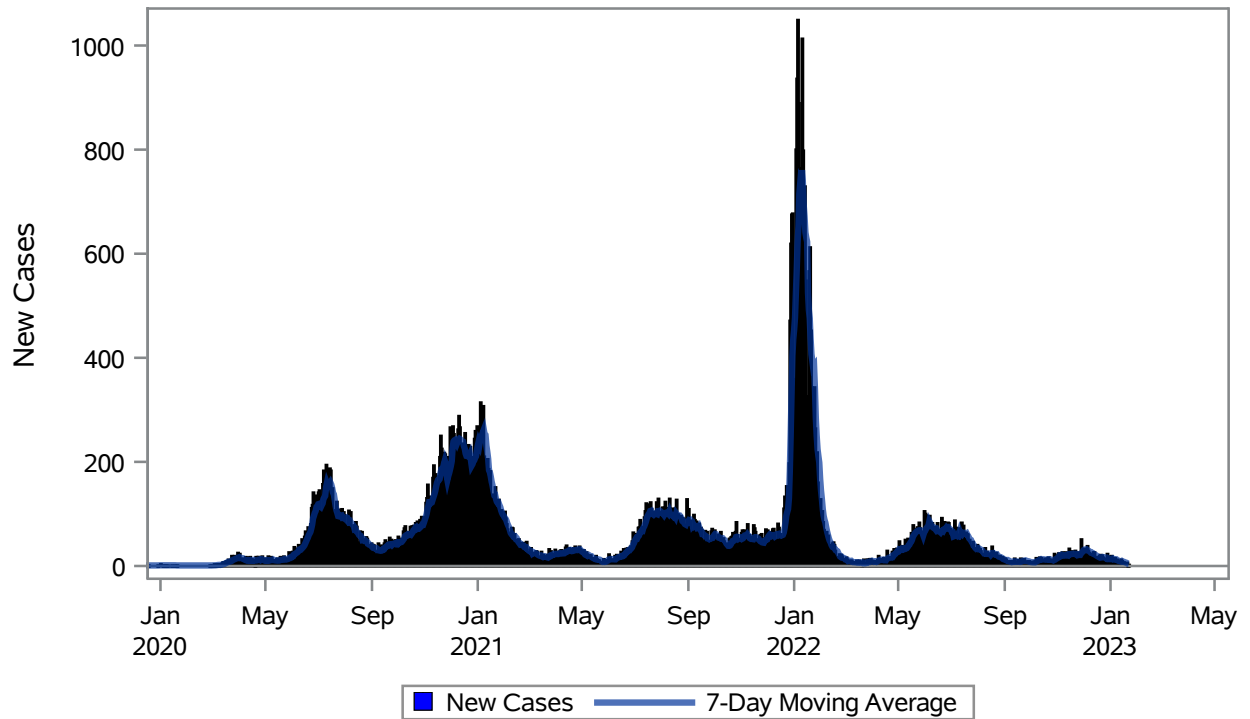


COVID19 Cases for North Las Vegas, 7-Day Moving Average



Investigations are ongoing; data are subject to change.

Reporting through 23JAN2023

North Las Vegas zip codes include 89030, 89031, 89032, 89033, 89036, 89081, 89084, 89085, 89086, 89087.

Table 1: New COVID19 Cases and 7-Day Moving Average in North Las Vegas, Previous Two Weeks

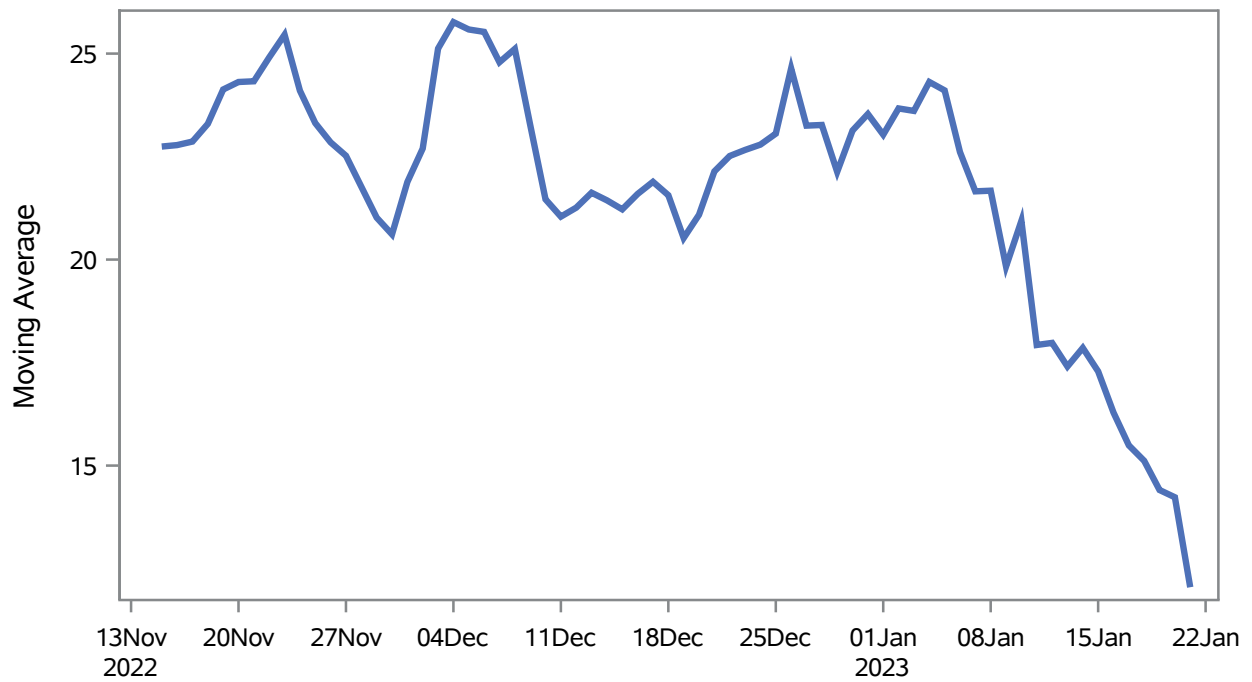
Date (Daily)	New Cases	7-Day Moving Average
10JAN2023	8	10.00
11JAN2023	10	9.71
12JAN2023	7	9.14
13JAN2023	12	8.71
14JAN2023	9	9.57
15JAN2023	4	8.43
16JAN2023	7	8.14
17JAN2023	5	7.71
18JAN2023	4	6.86
19JAN2023	4	6.43
20JAN2023	6	5.57
21JAN2023	1	4.43

Note1: Event Date is calculated as follows based on completed information:
1) Disease onset date 2) Disease diagnosis date 3) Lab result collection date 4) Report date to SNHD.

**Investigations are ongoing; data are subject to change.
Reporting through 23JAN2023**

North Las Vegas zip codes include 89030, 89031, 89032, 89033, 89036, 89081, 89084, 89085, 89086, 89087.

Percent of People Receiving COVID-19 Viral Tests Who Have Positive Results in North Las Vegas



Investigations are ongoing; data are subject to change.

Reporting through 23JAN2023

North Las Vegas zip codes include 89030, 89031, 89032, 89033, 89036, 89081, 89084, 89085, 89086, 89087.

Table 2: Percent of People Receiving COVID-19 Viral Tests Who Have Positive Results in North Las Vegas

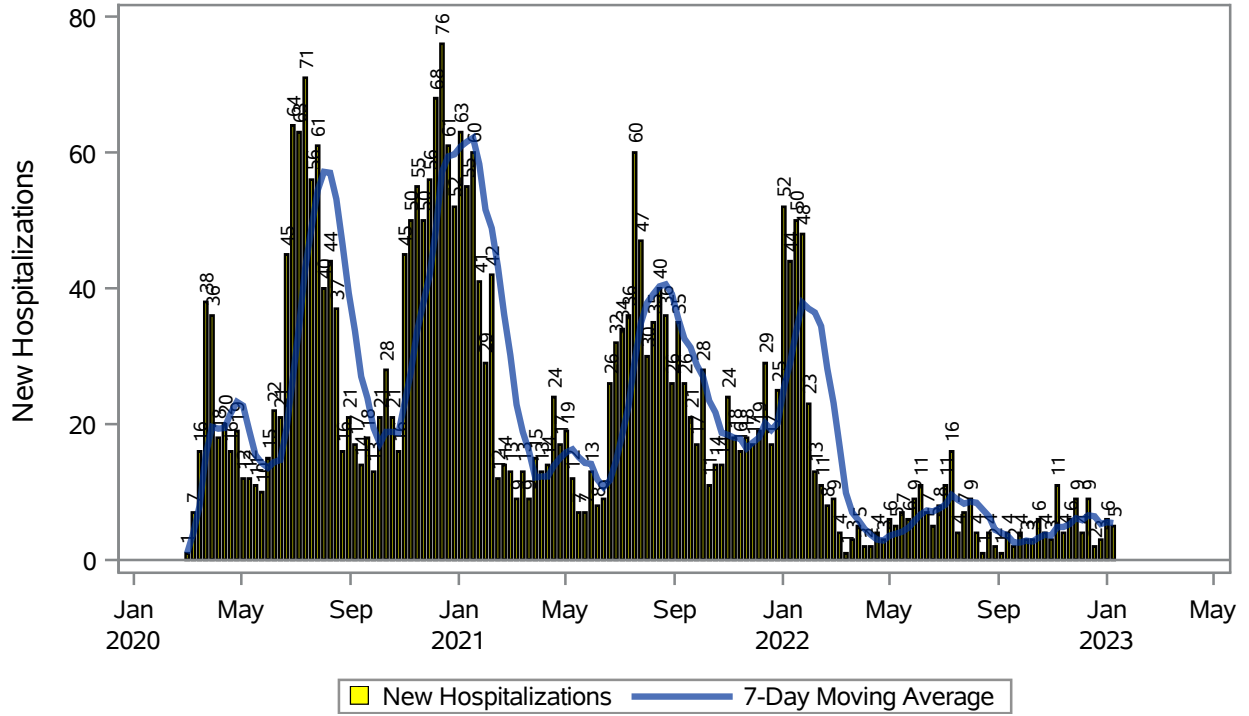
Collection Date	Positive	Negative	Equivocal	Total	% Positivity	7-Day Moving Average
07JAN2023	23	77		100	23.00	21.7
08JAN2023	12	48	1	61	19.67	21.7
09JAN2023	23	99	1	123	18.70	19.8
10JAN2023	19	67		86	22.09	20.9
11JAN2023	16	174		190	8.42	17.9
12JAN2023	18	82		100	18.00	18.0
13JAN2023	19	140		159	11.95	17.4
14JAN2023	17	48		65	26.15	17.9
15JAN2023	8	43		51	15.69	17.3
16JAN2023	13	98		111	11.71	16.3
17JAN2023	18	90	1	109	16.51	15.5
18JAN2023	11	178	1	190	5.79	15.1
19JAN2023	12	80		92	13.04	14.4
20JAN2023	9	75		84	10.71	14.2
21JAN2023	5	41		46	10.87	12.0

Note: Testing Data includes a 3 day delay

**Investigations are ongoing; data are subject to change.
Reporting through 23JAN2023**

North Las Vegas zip codes include 89030, 89031, 89032, 89033, 89036, 89081, 89084, 89085, 89086, 89087.

COVID19 Hospitalizations for North Las Vegas, 7-Day Moving Average



Investigations are ongoing; data are subject to change.

Reporting through 23JAN2023

North Las Vegas zip codes include 89030, 89031, 89032, 89033, 89036, 89081, 89084, 89085, 89086, 89087.

Table 3: New COVID19-Related Hospitalizations and 7-Day Moving Average in North Las Vegas, previous month

Week	Hospitalizations	7-Day Moving Average
25DEC2022	3	5.29
01JAN2023	6	5.57
08JAN2023	5	5.43

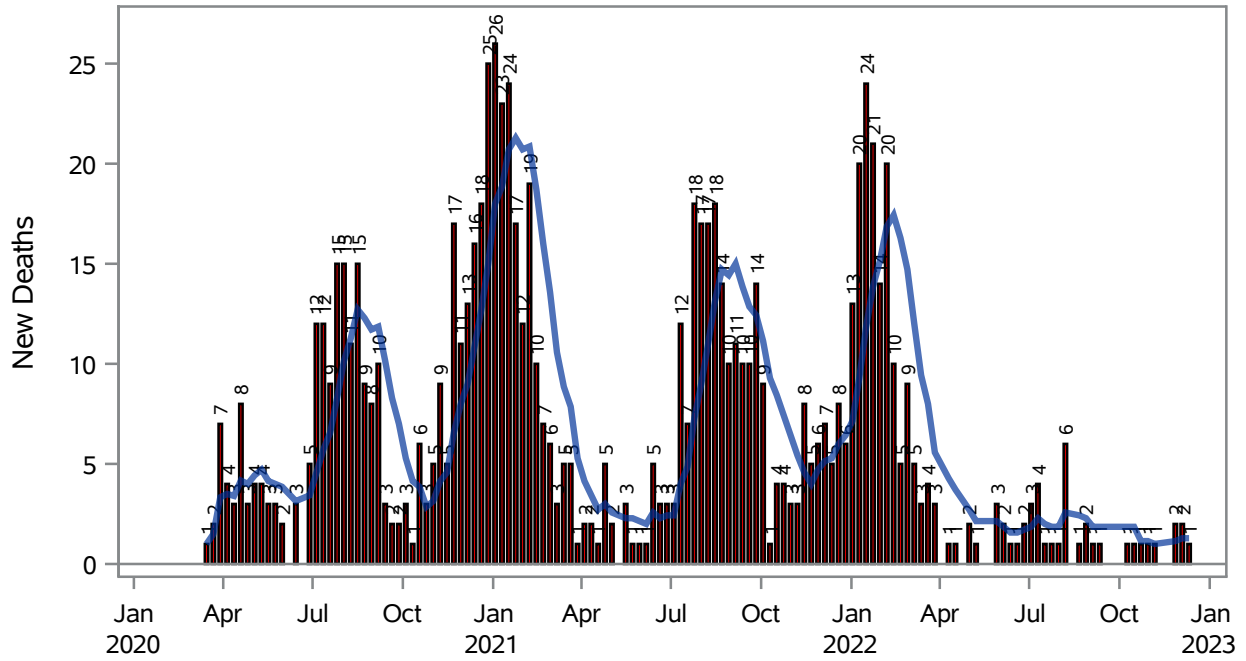
Note1: Admission Date is calculated as follows based on completed information:
A) COVID19 Case is hospitalized B) COVID19 Case has a hospital admission date.

If admission date is missing, then the following is substituted temporarily, in order:
1) Disease onset date 2) Disease diagnosis date 3) Lab result collection date 4) Report date to SNHD.

**Investigations are ongoing; data are subject to change.
Reporting through 23JAN2023**

North Las Vegas zip codes include 89030, 89031, 89032, 89033, 89036, 89081, 89084, 89085, 89086, 89087.

COVID19 Deaths for North Las Vegas, 7-Day Moving Average



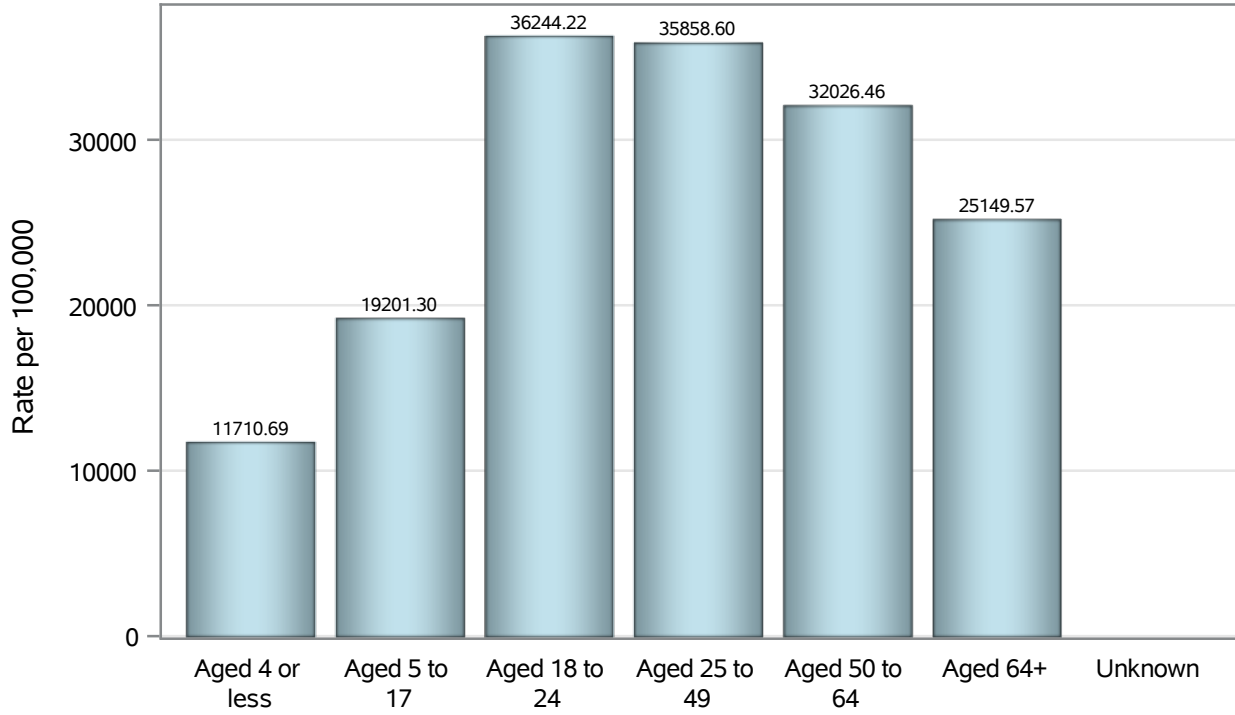
■ New Deaths — 7-Day Moving Average

Investigations are ongoing; data are subject to change.

Reporting through 23JAN2023

North Las Vegas zip codes include 89030, 89031, 89032, 89033, 89036, 89081, 89084, 89085, 89086, 89087.

Case Age Rates in North Las Vegas

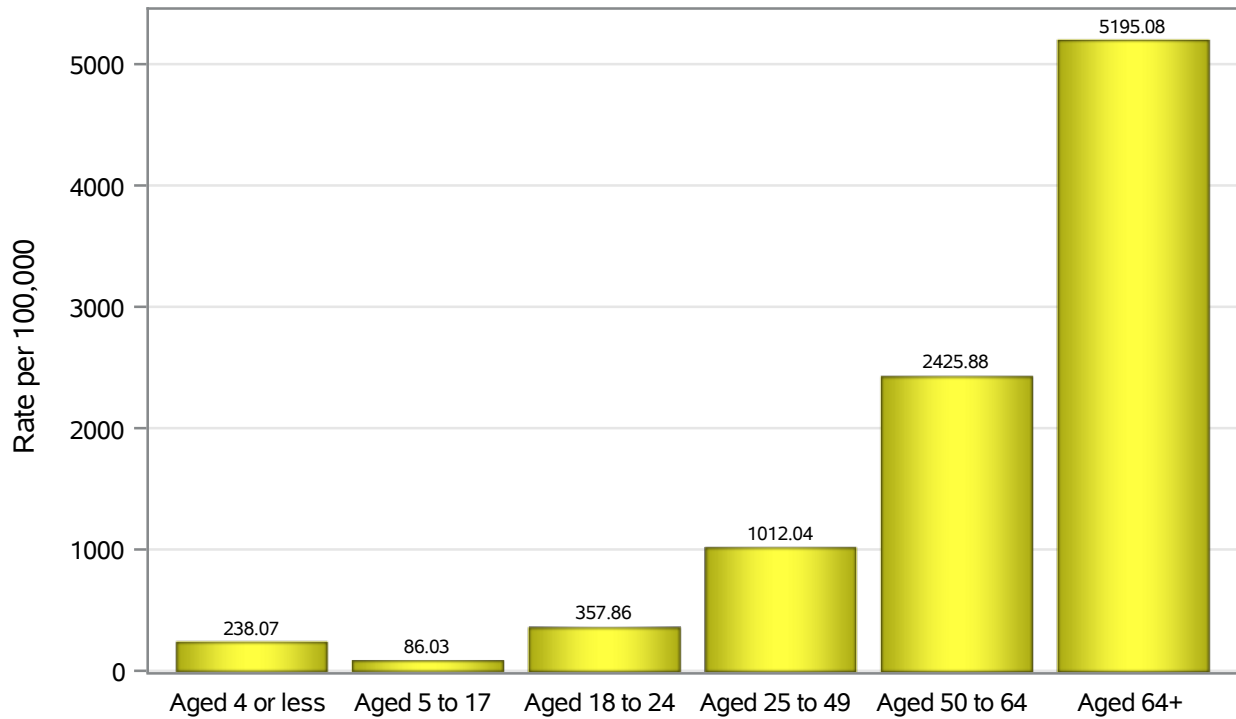


Investigations are ongoing; data are subject to change.

Reporting through 23JAN2023

North Las Vegas zip codes include 89030, 89031, 89032, 89033, 89036, 89081, 89084, 89085, 89086, 89087.

Hospitalization Age Rates in North Las Vegas

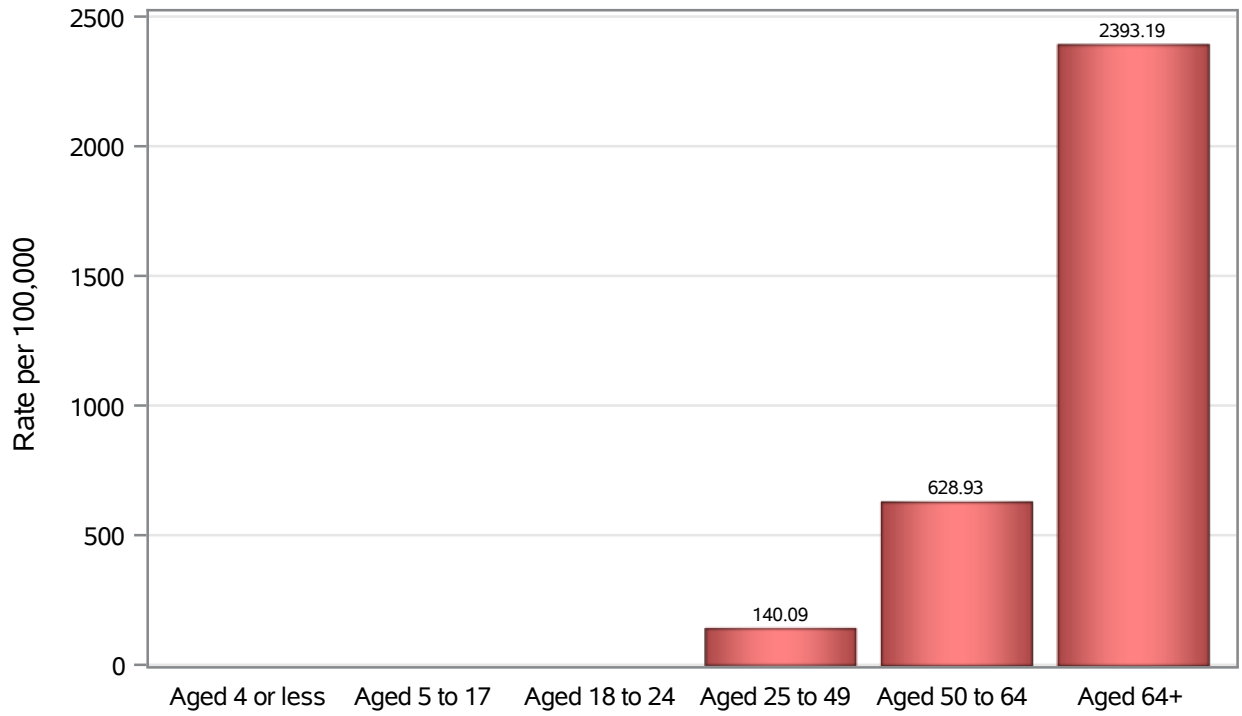


Investigations are ongoing; data are subject to change.

Reporting through 23JAN2023

North Las Vegas zip codes include 89030, 89031, 89032, 89033, 89036, 89081, 89084, 89085, 89086, 89087.

Death Age Rates in North Las Vegas



Investigations are ongoing; data are subject to change.

Reporting through 23JAN2023

North Las Vegas zip codes include 89030, 89031, 89032, 89033, 89036, 89081, 89084, 89085, 89086, 89087.

Table 5: Age and COVID19 in North Las Vegas

Case Status	Age Categories	N	%	Population	Rate per 100,000
Cases	Aged 4 or less	2066	3.1	17,642	11711
	Aged 5 to 17	9597	14.2	49,981	19201
	Aged 18 to 24	8305	12.3	22,914	36244
	Aged 25 to 49	29692	44.0	82,803	35859
	Aged 50 to 64	11763	17.5	36,729	32026
	Aged 64+	5969	8.9	23,734	25150
	Unknown	15	0.0	.	.
Hospitalizations	Aged 4 or less	42	1.3	17,642	238.07
	Aged 5 to 17	43	1.4	49,981	86.03
	Aged 18 to 24	82	2.6	22,914	357.86
	Aged 25 to 49	838	26.8	82,803	1012.0
	Aged 50 to 64	891	28.5	36,729	2425.9
	Aged 64+	1233	39.4	23,734	5195.1
	Deaths	Aged 4 or less	2	0.2	17,642
Aged 5 to 17		1	0.1	49,981	.
Aged 18 to 24		2	0.2	22,914	.
Aged 25 to 49		116	12.6	82,803	140.09
Aged 50 to 64		231	25.1	36,729	628.93
Aged 64+		568	61.7	23,734	2393.2

Note1: Population data source for calculating rate estimates: U.S. Census Bureau, ACS 5-year estimate.

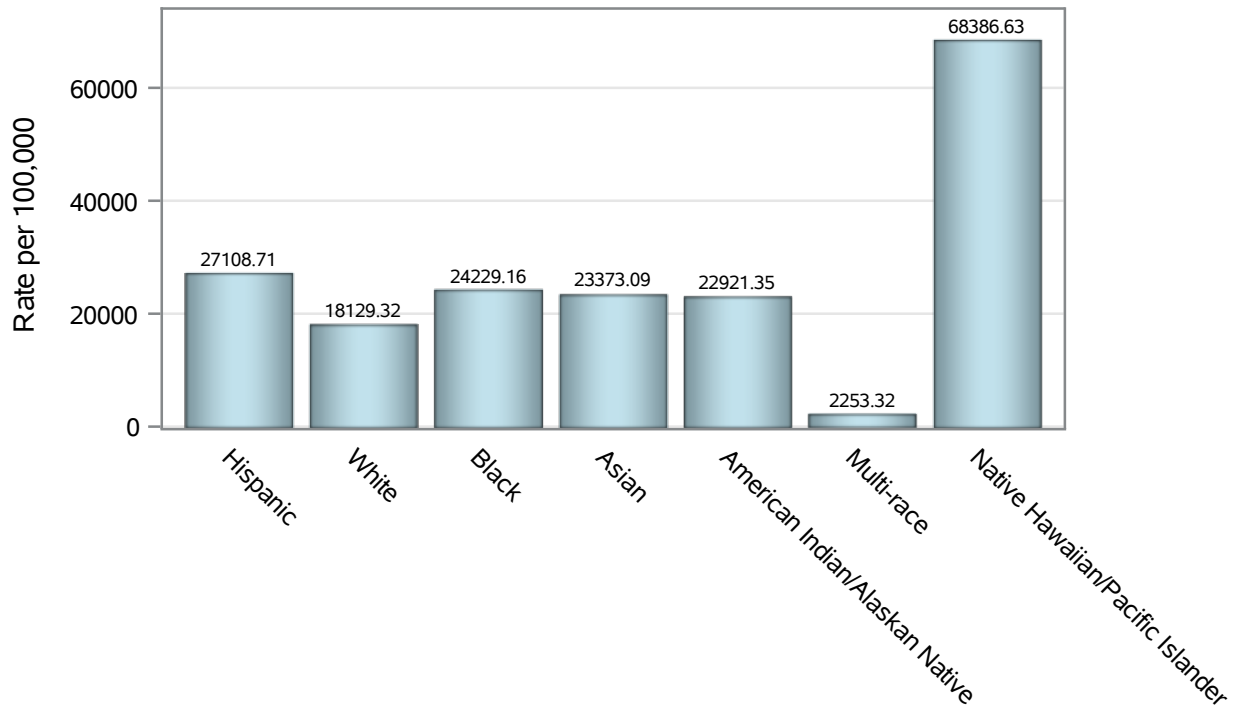
Note2: Rates for categories with fewer than 12 cases are suppressed due to high relative standard error.

Note3: Hospitalizations are regardless of deceased status; Deaths are regardless of hospitalization status

**Investigations are ongoing; data are subject to change.
Reporting through 23JAN2023**

North Las Vegas zip codes include 89030, 89031, 89032, 89033, 89036, 89081, 89084, 89085, 89086, 89087.

Case Race/Ethnicity Rates in North Las Vegas

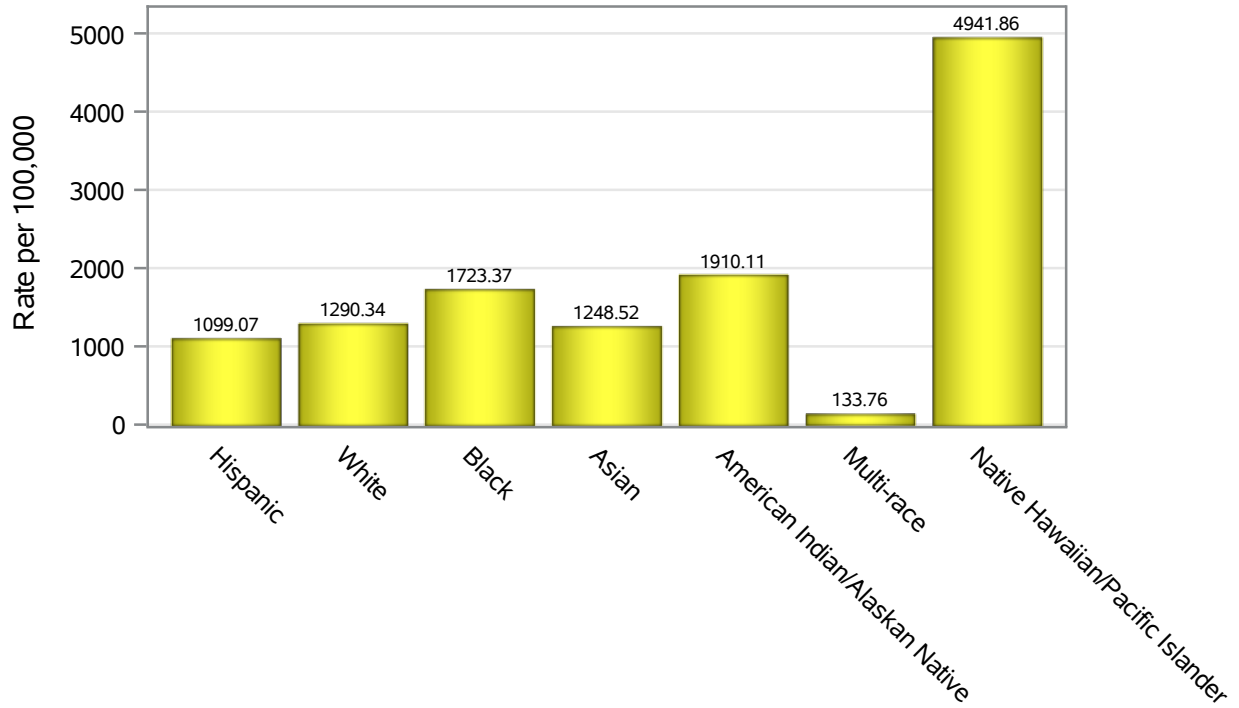


Investigations are ongoing; data are subject to change.

Reporting through 23JAN2023

North Las Vegas zip codes include 89030, 89031, 89032, 89033, 89036, 89081, 89084, 89085, 89086, 89087.

Hospitalization Race/Ethnicity Rates in North Las Vegas

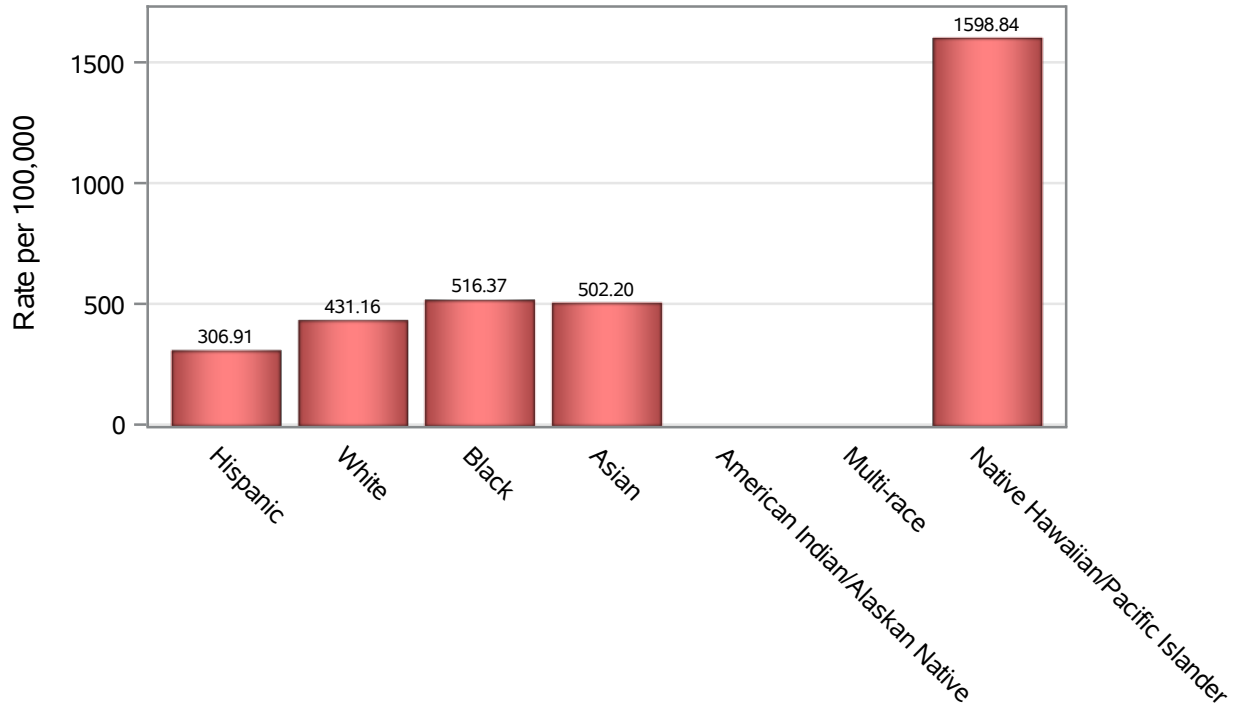


Investigations are ongoing; data are subject to change.

Reporting through 23JAN2023

North Las Vegas zip codes include 89030, 89031, 89032, 89033, 89036, 89081, 89084, 89085, 89086, 89087.

Death Race/Ethnicity Rates in North Las Vegas



Investigations are ongoing; data are subject to change.

Reporting through 23JAN2023

North Las Vegas zip codes include 89030, 89031, 89032, 89033, 89036, 89081, 89084, 89085, 89086, 89087.

Table 6: Race/Ethnicity and COVID19 in North Las Vegas

Case Status	Race Ethnicity Categories	N	%	Population	Rate per 100,000
Cases	Hispanic	26145	38.8	96,445	27109
	White	11521	17.1	63,549	18129
	Black	11402	16.9	47,059	24229
	Asian	3351	5.0	14,337	23373
	American Indian/Alaskan Native	204	0.3	890	22921
	Multi-race	219	0.3	9,719	2253.3
	Native Hawaiian/Pacific Islander	941	1.4	1,376	68387
	Unknown	13624	20.2	.	.
Hospitalizations	Hispanic	1060	33.9	96,445	1099.1
	White	820	26.2	63,549	1290.3
	Black	811	25.9	47,059	1723.4
	Asian	179	5.7	14,337	1248.5
	American Indian/Alaskan Native	17	0.5	890	1910.1
	Multi-race	13	0.4	9,719	133.76
	Native Hawaiian/Pacific Islander	68	2.2	1,376	4941.9
	Unknown	161	5.1	.	.
Deaths	Hispanic	296	32.2	96,445	306.91
	White	274	29.8	63,549	431.16
	Black	243	26.4	47,059	516.37
	Asian	72	7.8	14,337	502.20
	American Indian/Alaskan Native	6	0.7	890	.
	Multi-race	7	0.8	9,719	.
	Native Hawaiian/Pacific Islander	22	2.4	1,376	1598.8

Note1: Population data source for calculating rate estimates: U.S. Census Bureau, ACS 5-year estimate.

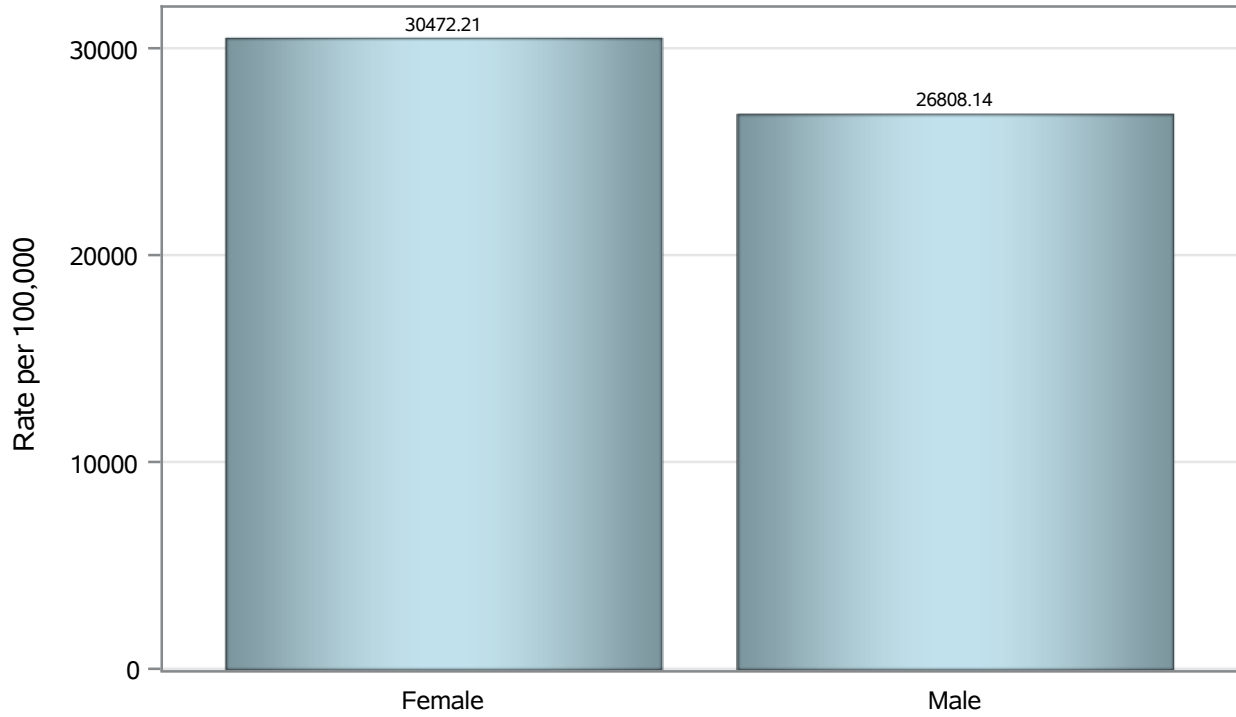
Note2: Rates for categories with fewer than 12 cases are suppressed due to high relative standard error.

Note3: Hospitalizations are regardless of deceased status; Deaths are regardless of hospitalization status

**Investigations are ongoing; data are subject to change.
Reporting through 23JAN2023**

North Las Vegas zip codes include 89030, 89031, 89032, 89033, 89036, 89081, 89084, 89085, 89086, 89087.

Case Birth Sex Rates in North Las Vegas

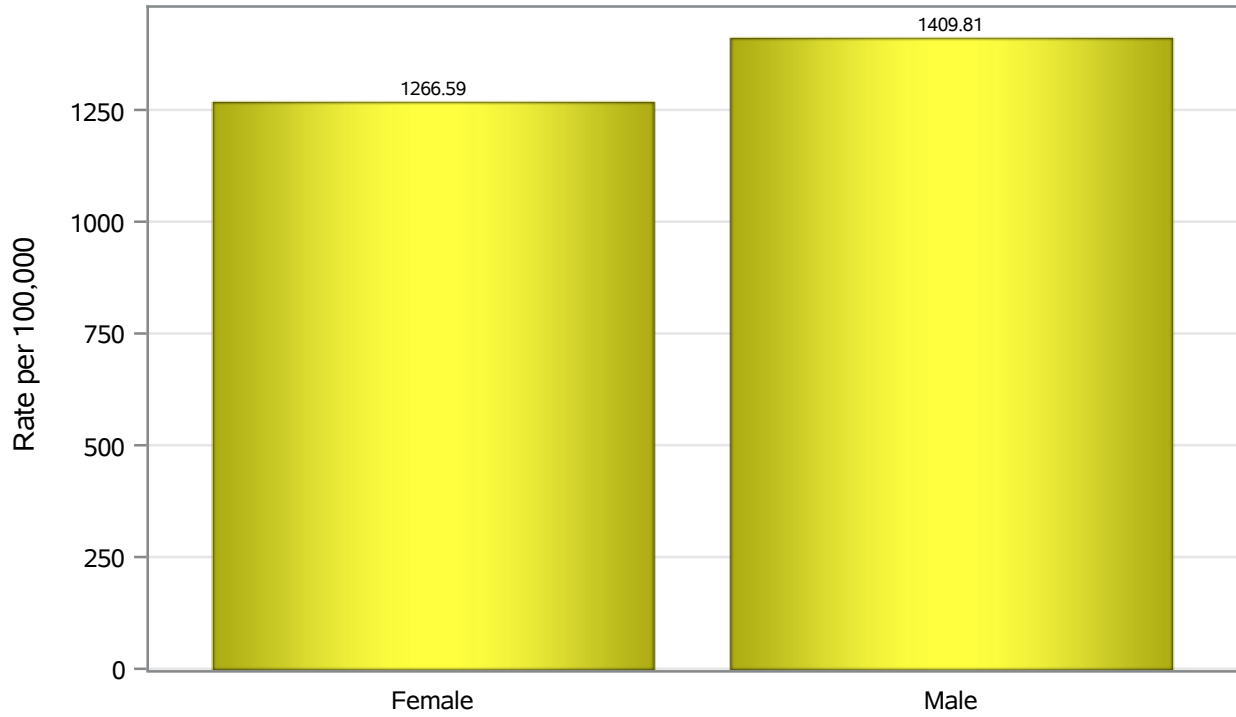


Investigations are ongoing; data are subject to change.

Reporting through 23JAN2023

North Las Vegas zip codes include 89030, 89031, 89032, 89033, 89036, 89081, 89084, 89085, 89086, 89087.

Hospitalization Birth Sex Rates in North Las Vegas

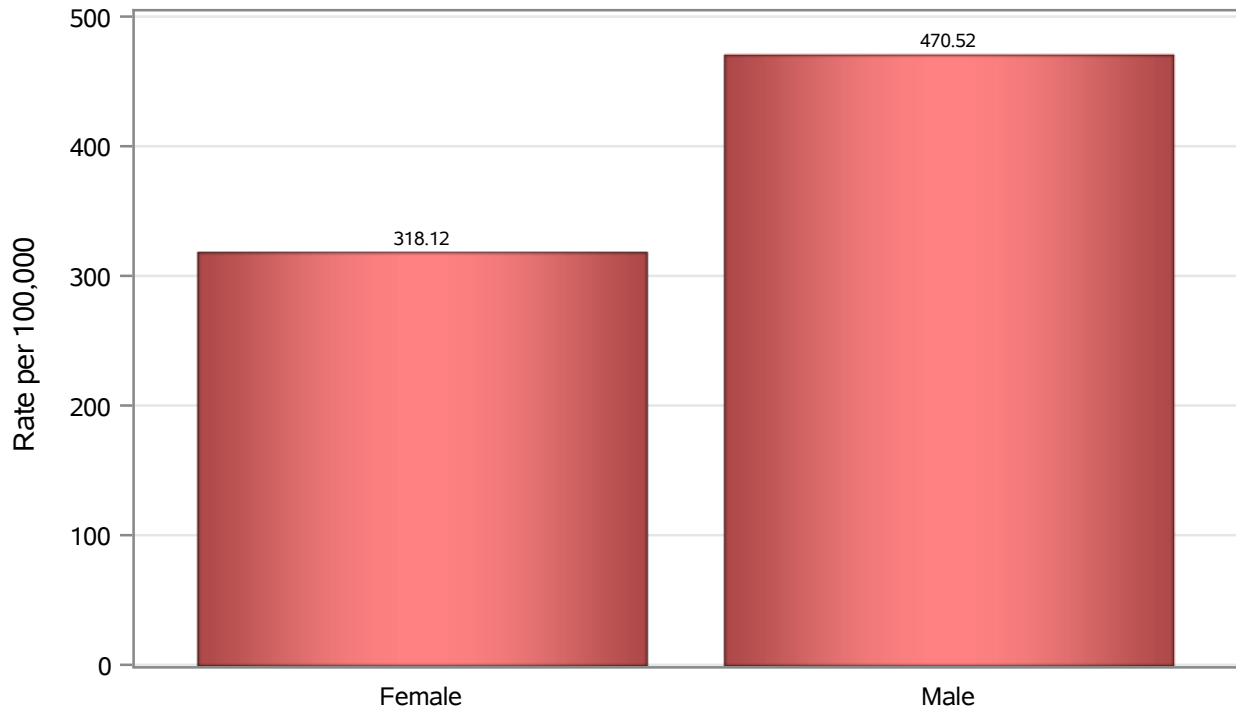


Investigations are ongoing; data are subject to change.

Reporting through 23JAN2023

North Las Vegas zip codes include 89030, 89031, 89032, 89033, 89036, 89081, 89084, 89085, 89086, 89087.

Death Birth Sex Rates in North Las Vegas



Investigations are ongoing; data are subject to change.

Reporting through 23JAN2023

North Las Vegas zip codes include 89030, 89031, 89032, 89033, 89036, 89081, 89084, 89085, 89086, 89087.

Table 7: Birth Sex and COVID19 in North Las Vegas

Case Status	Birth Sex Categories	N	%	Population	Rate per 100,000
Cases	Female	36208	53.7	118823	30472
	Male	30824	45.7	114980	26808
	Unknown	375	0.6	.	.
Hospitalizations	Female	1505	48.1	118823	1266.6
	Male	1621	51.8	114980	1409.8
	Unknown	3	0.1	.	.
Deaths	Female	378	41.1	118823	318.12
	Male	541	58.8	114980	470.52
	Unknown	1	0.1	.	.

Note1: Population data source for calculating rate estimates: U.S. Census Bureau, ACS 5-year estimate.

Note2: Rates for categories with fewer than 12 cases are suppressed due to high relative standard error.

Note3: Hospitalizations are regardless of deceased status; Deaths are regardless of hospitalization status

**Investigations are ongoing; data are subject to change.
Reporting through 23JAN2023**

North Las Vegas zip codes include 89030, 89031, 89032, 89033, 89036, 89081, 89084, 89085, 89086, 89087.