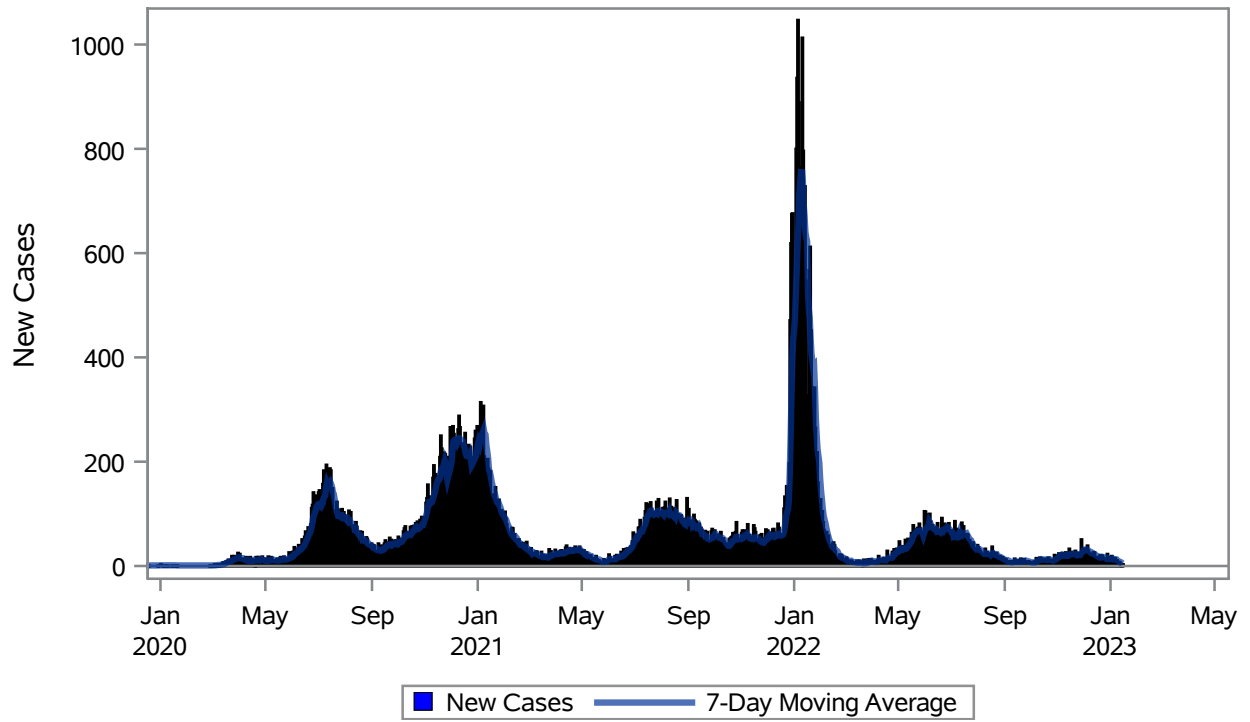


COVID19 Cases for North Las Vegas, 7-Day Moving Average



Investigations are ongoing; data are subject to change.

Reporting through 16JAN2023

North Las Vegas zip codes include 89030, 89031, 89032, 89033, 89036, 89081, 89084, 89085, 89086, 89087.

Table 1: New COVID19 Cases and 7-Day Moving Average in North Las Vegas, Previous Two Weeks

Date (Daily)	New Cases	7-Day Moving Average
03JAN2023	15	14.29
04JAN2023	13	12.86
05JAN2023	11	13.43
06JAN2023	15	13.14
07JAN2023	3	12.43
08JAN2023	11	12.43
09JAN2023	6	10.57
10JAN2023	8	9.57
11JAN2023	7	8.71
12JAN2023	5	7.86
13JAN2023	2	6.00
14JAN2023	2	5.86

Note1: Event Date is calculated as follows based on completed information:

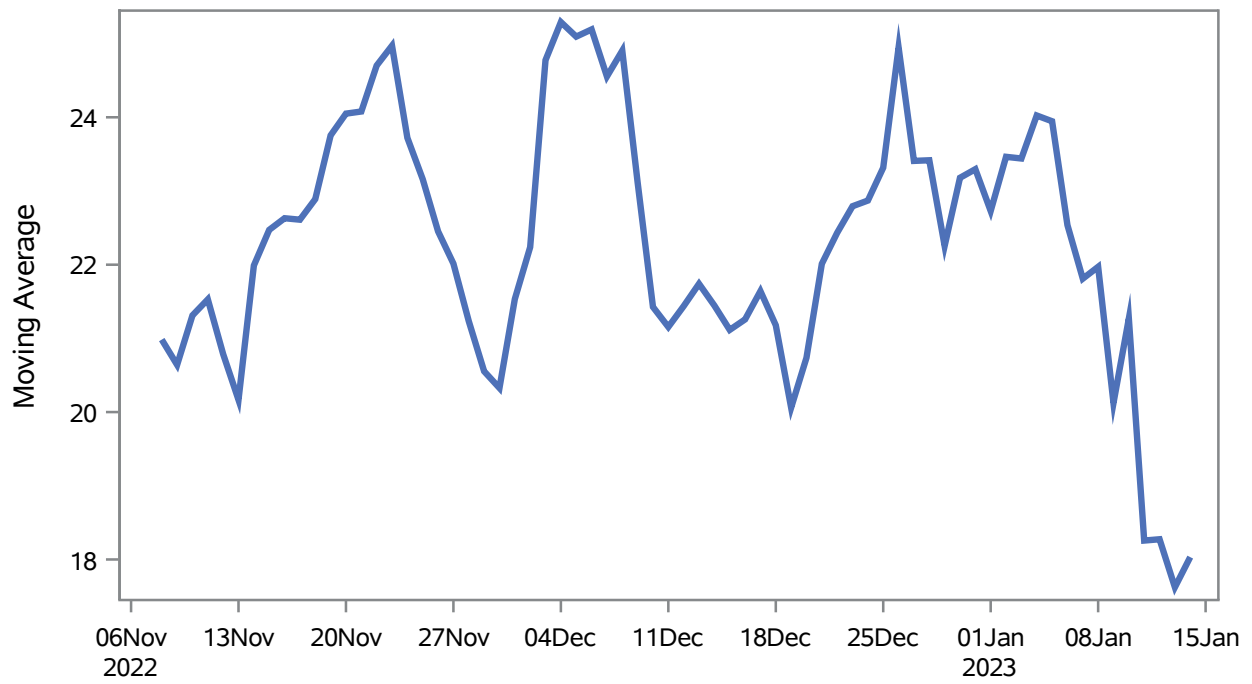
1) Disease onset date 2) Disease diagnosis date 3) Lab result collection date 4) Report date to SNHD.

Investigations are ongoing; data are subject to change.

Reporting through 16JAN2023

North Las Vegas zip codes include 89030, 89031, 89032, 89033, 89036, 89081, 89084, 89085, 89086, 89087.

Percent of People Receiving COVID-19 Viral Tests Who Have Positive Results in North Las Vegas



Investigations are ongoing; data are subject to change.

Reporting through 16JAN2023

North Las Vegas zip codes include 89030, 89031, 89032, 89033, 89036, 89081, 89084, 89085, 89086, 89087.

Table 2: Percent of People Receiving COVID-19 Viral Tests Who Have Positive Results in North Las Vegas

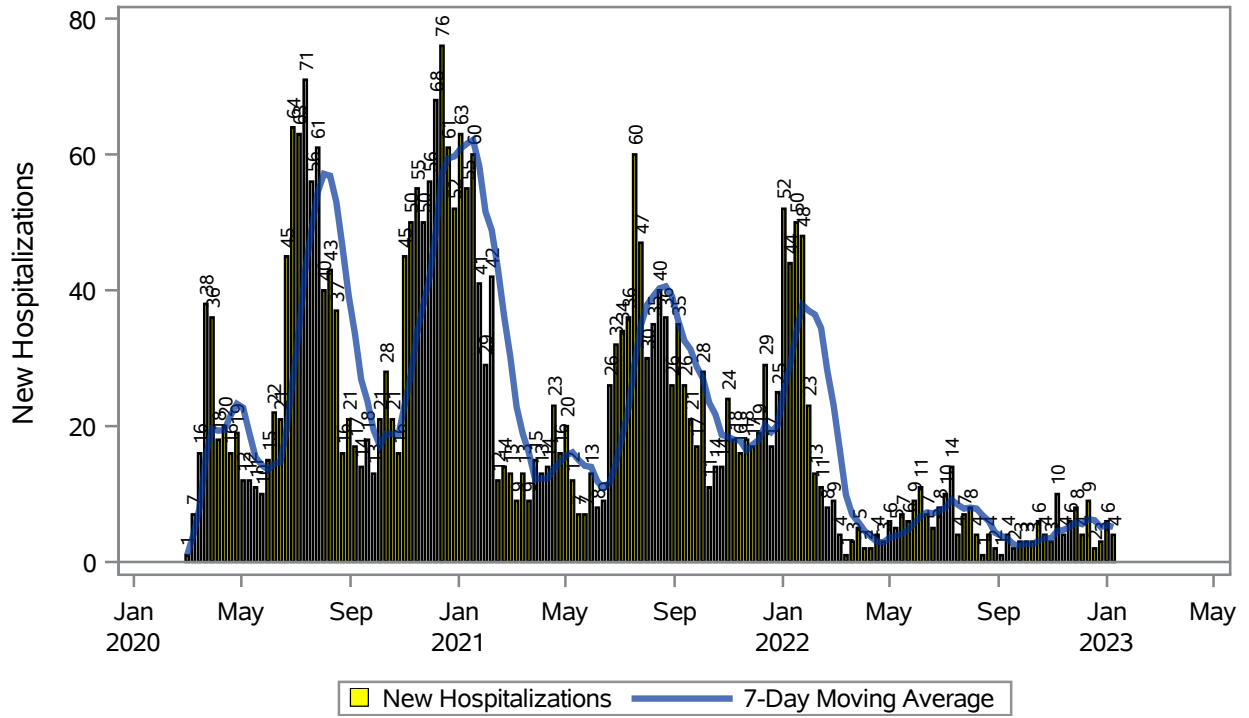
Collection Date	Positive	Negative	Equivocal	Total	% Positivity	7-Day Moving Average
31DEC2022	25	64		89	28.09	23.3
01JAN2023	9	37		46	19.57	22.7
02JAN2023	40	84		124	32.26	23.5
03JAN2023	38	229	3	270	14.07	23.4
04JAN2023	36	86		122	29.51	24.0
05JAN2023	27	121		148	18.24	23.9
06JAN2023	29	152		181	16.02	22.5
07JAN2023	23	77		100	23.00	21.8
08JAN2023	12	45	1	58	20.69	22.0
09JAN2023	23	95	1	119	19.33	20.1
10JAN2023	19	67		86	22.09	21.3
11JAN2023	16	174		190	8.42	18.3
12JAN2023	18	80		98	18.37	18.3
13JAN2023	18	139		157	11.46	17.6
14JAN2023	15	43		58	25.86	18.0

Note: Testing Data includes a 3 day delay

**Investigations are ongoing; data are subject to change.
Reporting through 16JAN2023**

North Las Vegas zip codes include 89030, 89031, 89032, 89033, 89036, 89081, 89084, 89085, 89086, 89087.

COVID19 Hospitalizations for North Las Vegas, 7-Day Moving Average



Investigations are ongoing; data are subject to change.

Reporting through 16JAN2023

North Las Vegas zip codes include 89030, 89031, 89032, 89033, 89036, 89081, 89084, 89085, 89086, 89087.

Table 3: New COVID19-Related Hospitalizations and 7-Day Moving Average in North Las Vegas, previous month

Week	Hospitalizations	7-Day Moving Average
18DEC2022	2	6.14
25DEC2022	3	5.14
01JAN2023	6	5.43
08JAN2023	4	5.14

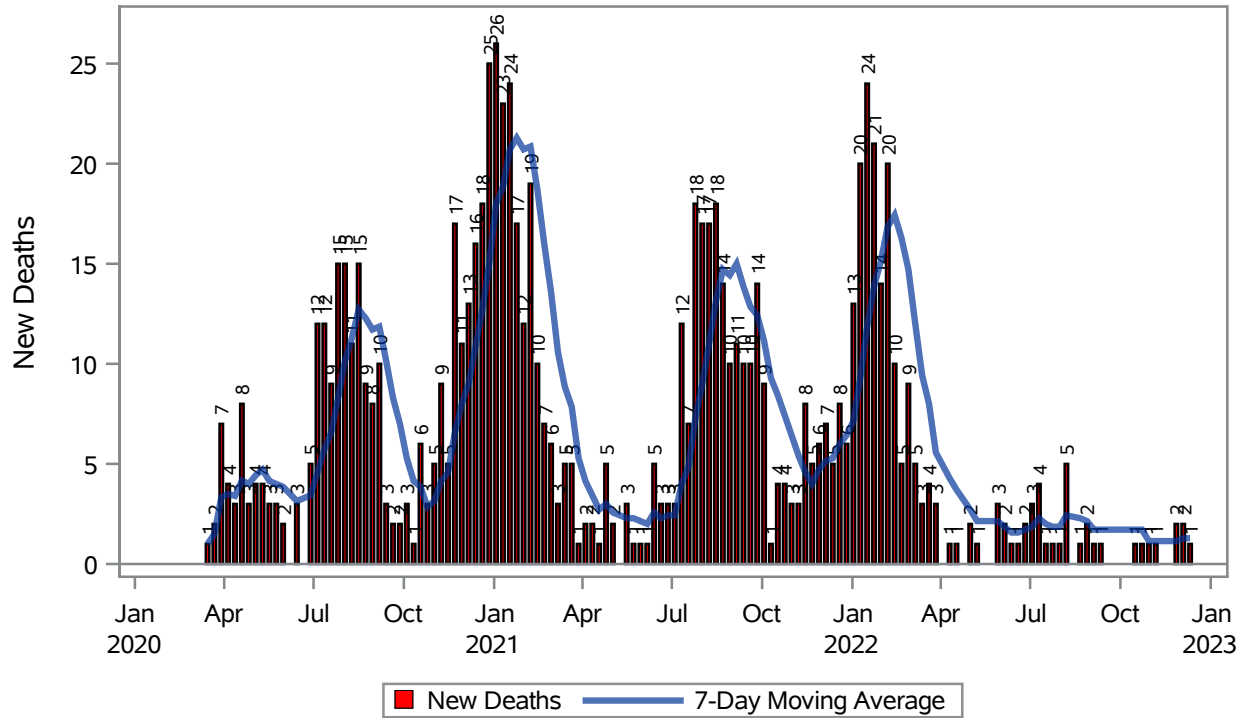
Note1: Admission Date is calculated as follows based on completed information:
A) COVID19 Case is hospitalized B) COVID19 Case has a hospital admission date.

If admission date is missing, then the following is substituted temporarily, in order:
1) Disease onset date 2) Disease diagnosis date 3) Lab result collection date 4) Report date to SNHD.

**Investigations are ongoing; data are subject to change.
Reporting through 16JAN2023**

North Las Vegas zip codes include 89030, 89031, 89032, 89033, 89036, 89081, 89084, 89085, 89086, 89087.

COVID19 Deaths for North Las Vegas, 7-Day Moving Average

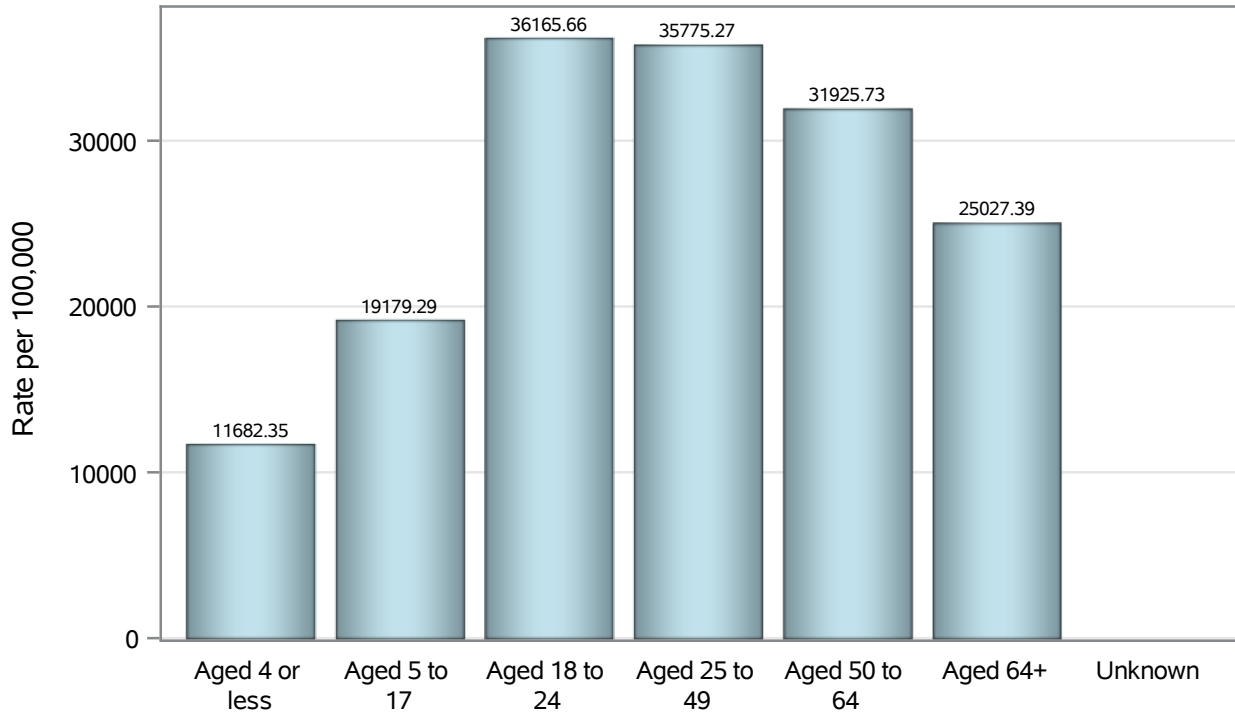


Investigations are ongoing; data are subject to change.

Reporting through 16JAN2023

North Las Vegas zip codes include 89030, 89031, 89032, 89033, 89036, 89081, 89084, 89085, 89086, 89087.

Case Age Rates in North Las Vegas

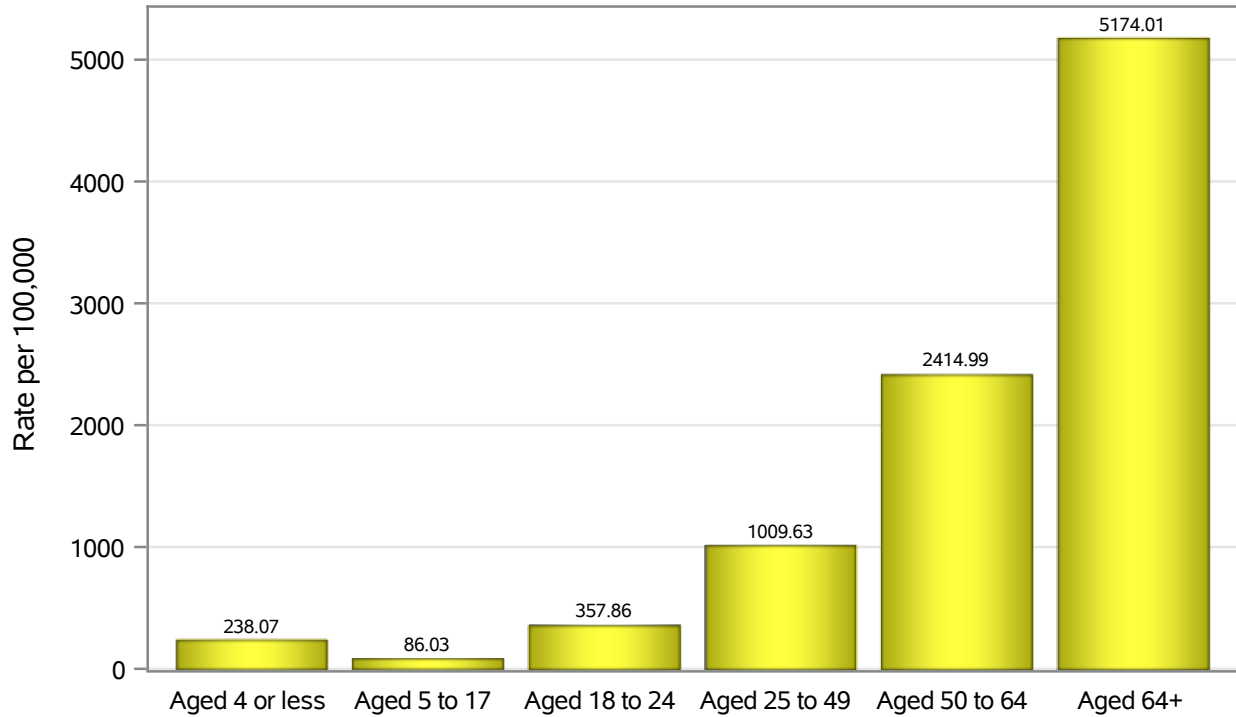


Investigations are ongoing; data are subject to change.

Reporting through 16JAN2023

North Las Vegas zip codes include 89030, 89031, 89032, 89033, 89036, 89081, 89084, 89085, 89086, 89087.

Hospitalization Age Rates in North Las Vegas

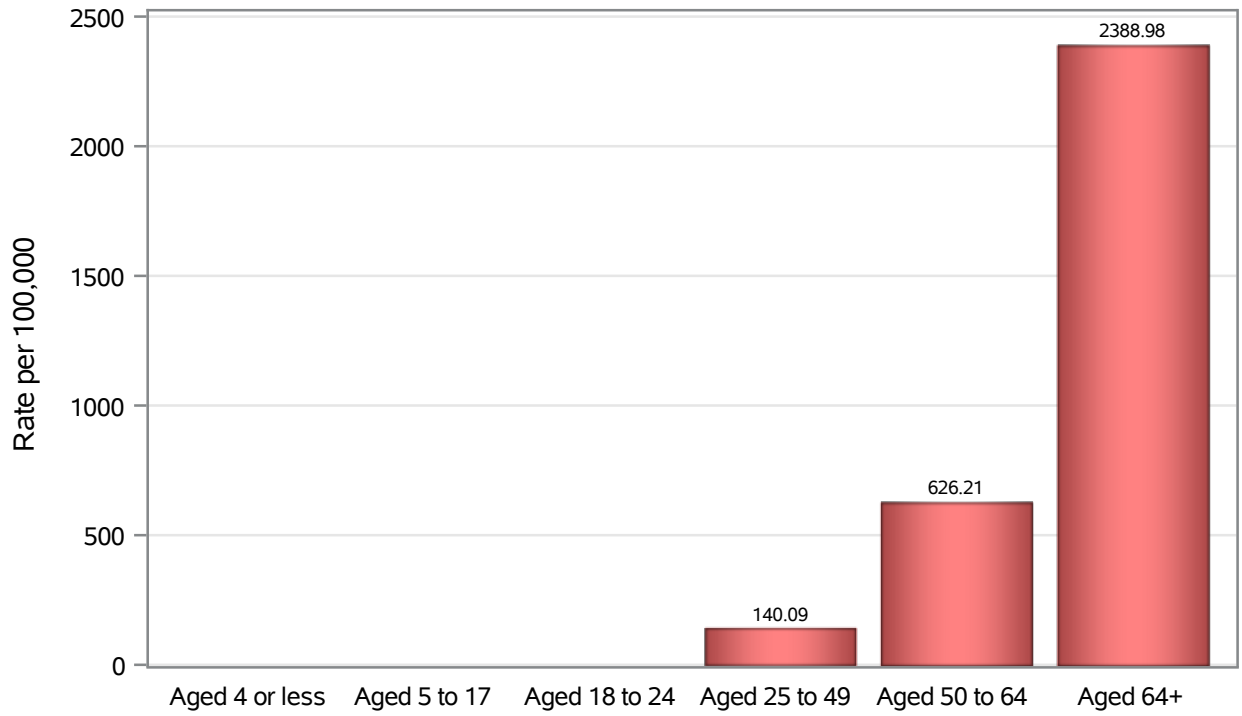


Investigations are ongoing; data are subject to change.

Reporting through 16JAN2023

North Las Vegas zip codes include 89030, 89031, 89032, 89033, 89036, 89081, 89084, 89085, 89086, 89087.

Death Age Rates in North Las Vegas



Investigations are ongoing; data are subject to change.

Reporting through 16JAN2023

North Las Vegas zip codes include 89030, 89031, 89032, 89033, 89036, 89081, 89084, 89085, 89086, 89087.

Table 5: Age and COVID19 in North Las Vegas

Case Status	Age Categories	N	%	Population	Rate per 100,000
Cases	Aged 4 or less	2061	3.1	17,642	11682
	Aged 5 to 17	9586	14.3	49,981	19179
	Aged 18 to 24	8287	12.3	22,914	36166
	Aged 25 to 49	29623	44.1	82,803	35775
	Aged 50 to 64	11726	17.4	36,729	31926
	Aged 64+	5940	8.8	23,734	25027
	Unknown	14	0.0	.	.
Hospitalizations	Aged 4 or less	42	1.3	17,642	238.07
	Aged 5 to 17	43	1.4	49,981	86.03
	Aged 18 to 24	82	2.6	22,914	357.86
	Aged 25 to 49	836	26.8	82,803	1009.6
	Aged 50 to 64	887	28.4	36,729	2415.0
	Aged 64+	1228	39.4	23,734	5174.0
	Deaths	Aged 4 or less	2	0.2	17,642
Aged 5 to 17		1	0.1	49,981	.
Aged 18 to 24		2	0.2	22,914	.
Aged 25 to 49		116	12.6	82,803	140.09
Aged 50 to 64		230	25.1	36,729	626.21
Aged 64+		567	61.8	23,734	2389.0

Note1: Population data source for calculating rate estimates: U.S. Census Bureau, ACS 5-year estimate.

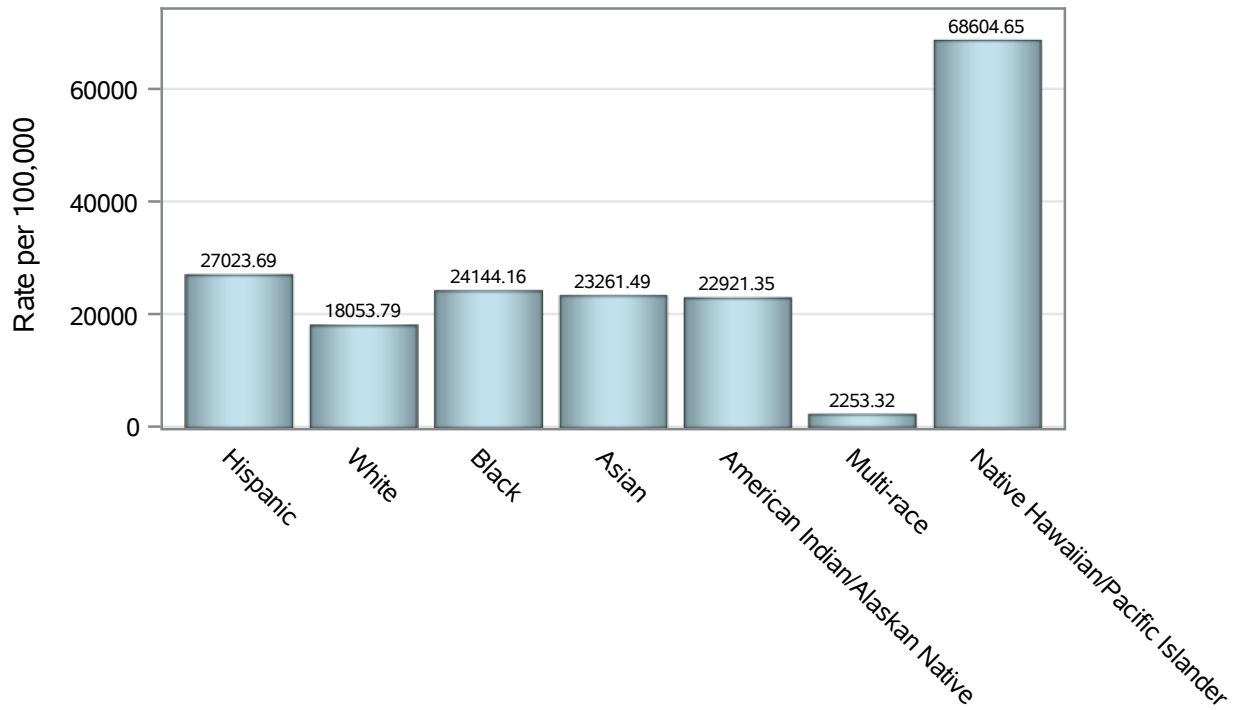
Note2: Rates for categories with fewer than 12 cases are suppressed due to high relative standard error.

Note3: Hospitalizations are regardless of deceased status; Deaths are regardless of hospitalization status

**Investigations are ongoing; data are subject to change.
Reporting through 16JAN2023**

North Las Vegas zip codes include 89030, 89031, 89032, 89033, 89036, 89081, 89084, 89085, 89086, 89087.

Case Race/Ethnicity Rates in North Las Vegas

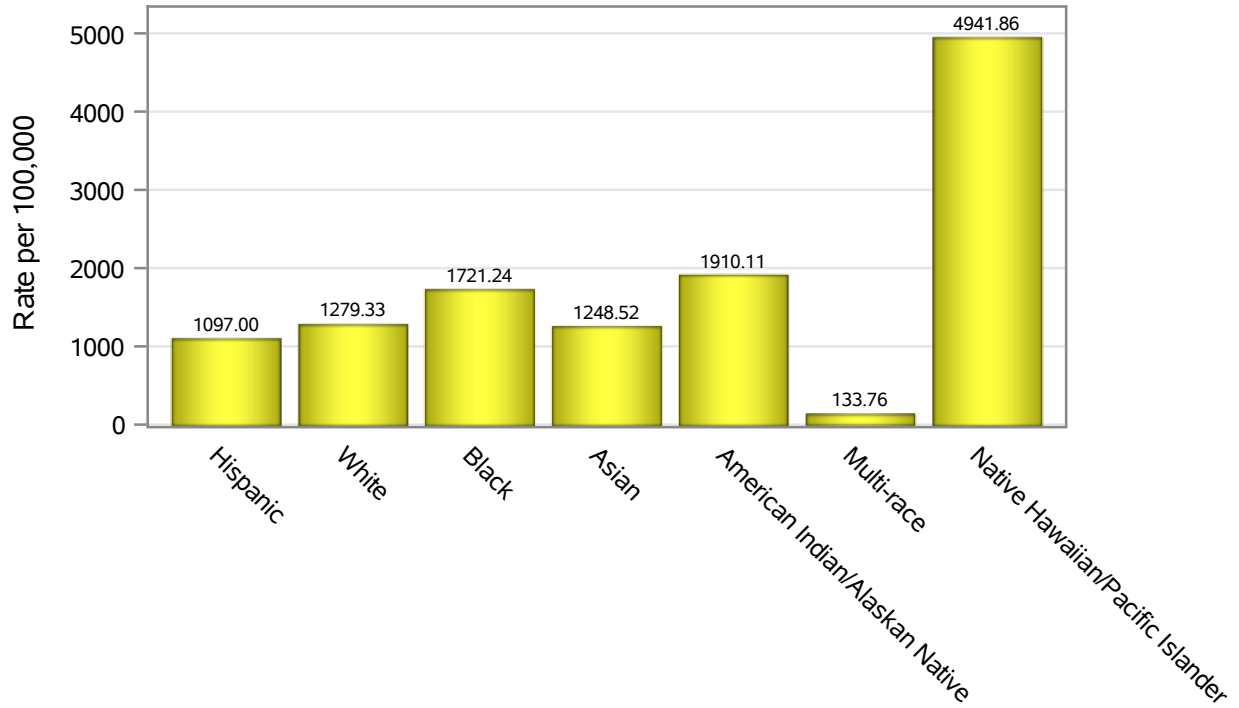


Investigations are ongoing; data are subject to change.

Reporting through 16JAN2023

North Las Vegas zip codes include 89030, 89031, 89032, 89033, 89036, 89081, 89084, 89085, 89086, 89087.

Hospitalization Race/Ethnicity Rates in North Las Vegas

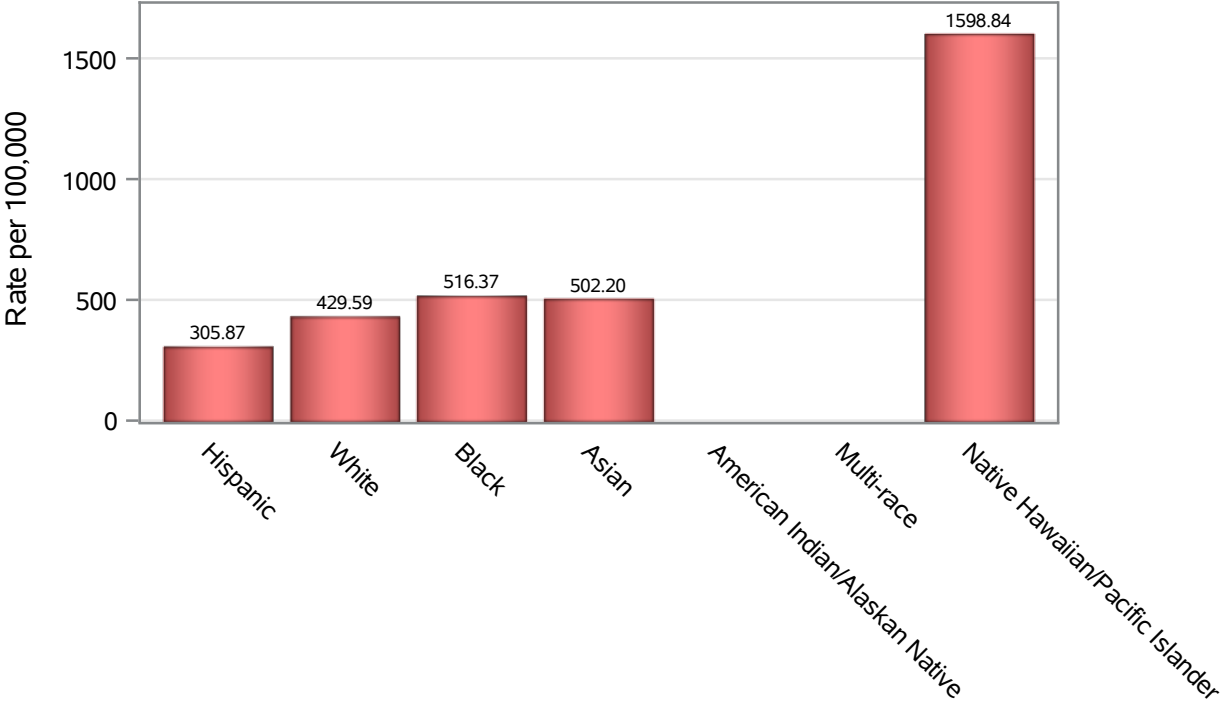


Investigations are ongoing; data are subject to change.

Reporting through 16JAN2023

North Las Vegas zip codes include 89030, 89031, 89032, 89033, 89036, 89081, 89084, 89085, 89086, 89087.

Death Race/Ethnicity Rates in North Las Vegas



Investigations are ongoing; data are subject to change.

Reporting through 16JAN2023

North Las Vegas zip codes include 89030, 89031, 89032, 89033, 89036, 89081, 89084, 89085, 89086, 89087.

Table 6: Race/Ethnicity and COVID19 in North Las Vegas

Case Status	Race Ethnicity Categories	N	%	Population	Rate per 100,000
Cases	Hispanic	26063	38.8	96,445	27024
	White	11473	17.1	63,549	18054
	Black	11362	16.9	47,059	24144
	Asian	3335	5.0	14,337	23261
	American Indian/Alaskan Native	204	0.3	890	22921
	Multi-race	219	0.3	9,719	2253.3
	Native Hawaiian/Pacific Islander	944	1.4	1,376	68605
	Unknown	13637	20.3	.	.
Hospitalizations	Hispanic	1058	33.9	96,445	1097.0
	White	813	26.1	63,549	1279.3
	Black	810	26.0	47,059	1721.2
	Asian	179	5.7	14,337	1248.5
	American Indian/Alaskan Native	17	0.5	890	1910.1
	Multi-race	13	0.4	9,719	133.76
	Native Hawaiian/Pacific Islander	68	2.2	1,376	4941.9
	Unknown	160	5.1	.	.
Deaths	Hispanic	295	32.1	96,445	305.87
	White	273	29.7	63,549	429.59
	Black	243	26.5	47,059	516.37
	Asian	72	7.8	14,337	502.20
	American Indian/Alaskan Native	6	0.7	890	.
	Multi-race	7	0.8	9,719	.
	Native Hawaiian/Pacific Islander	22	2.4	1,376	1598.8

Note1: Population data source for calculating rate estimates: U.S. Census Bureau, ACS 5-year estimate.

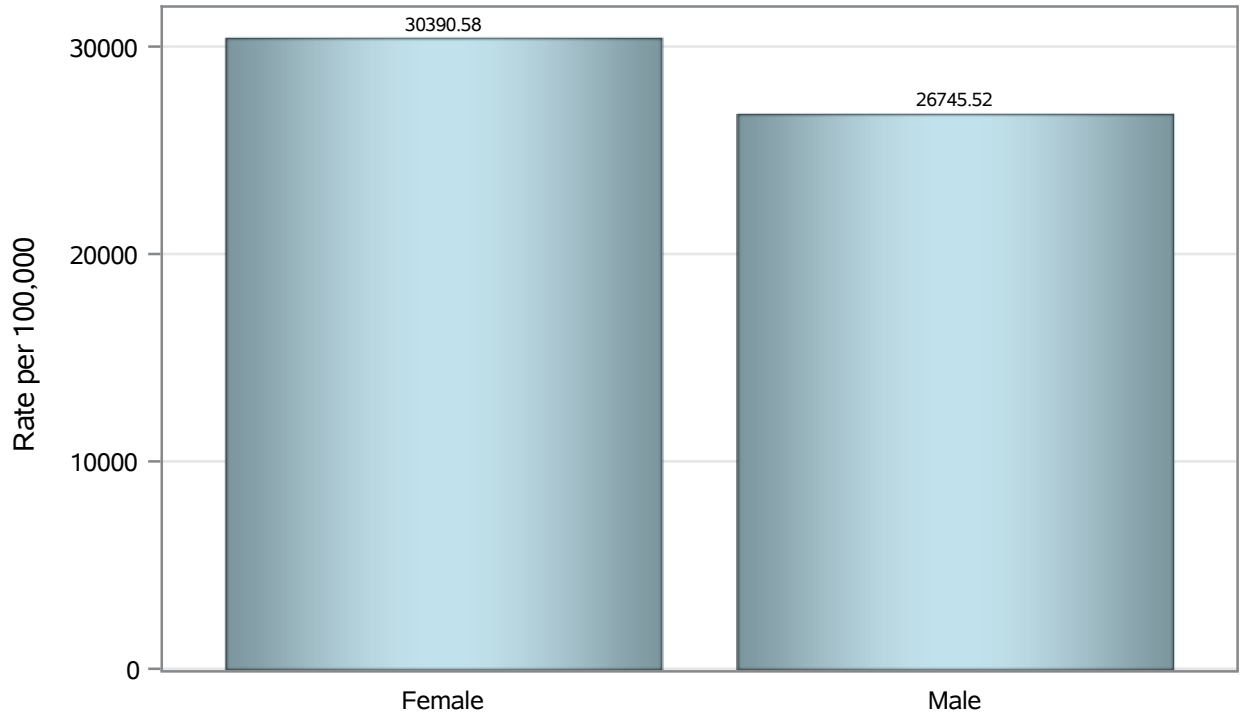
Note2: Rates for categories with fewer than 12 cases are suppressed due to high relative standard error.

Note3: Hospitalizations are regardless of deceased status; Deaths are regardless of hospitalization status

**Investigations are ongoing; data are subject to change.
Reporting through 16JAN2023**

North Las Vegas zip codes include 89030, 89031, 89032, 89033, 89036, 89081, 89084, 89085, 89086, 89087.

Case Birth Sex Rates in North Las Vegas

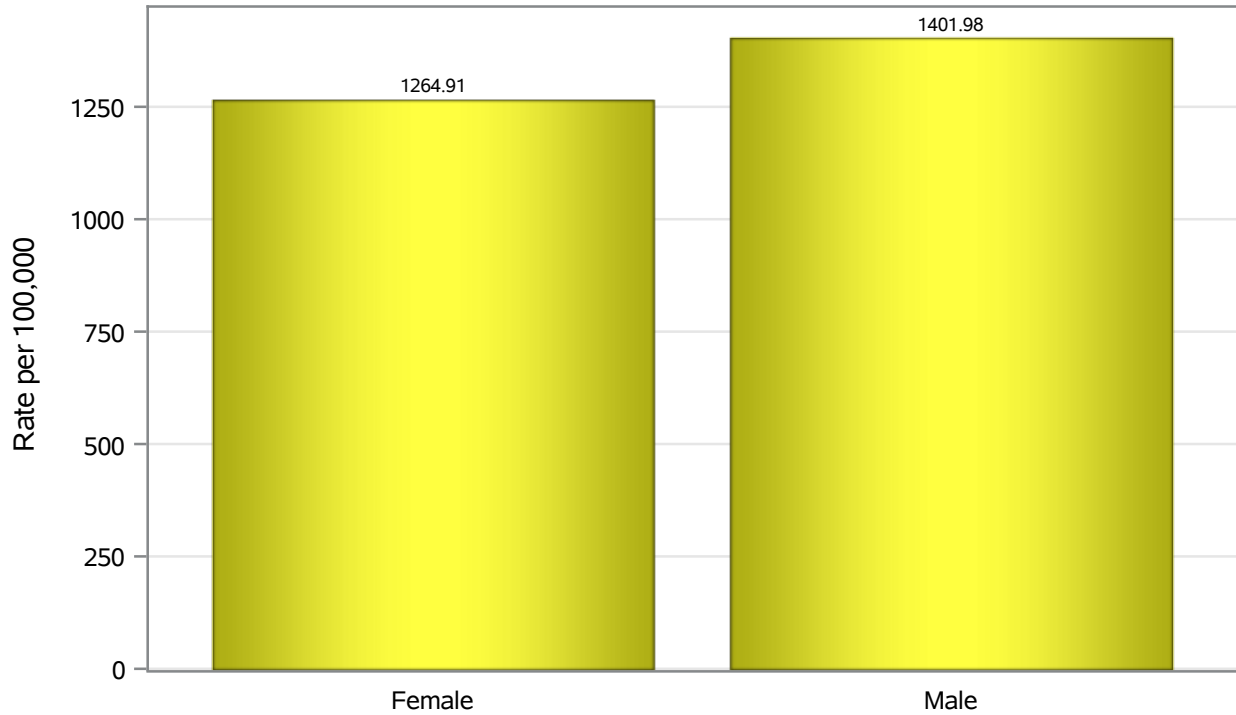


Investigations are ongoing; data are subject to change.

Reporting through 16JAN2023

North Las Vegas zip codes include 89030, 89031, 89032, 89033, 89036, 89081, 89084, 89085, 89086, 89087.

Hospitalization Birth Sex Rates in North Las Vegas

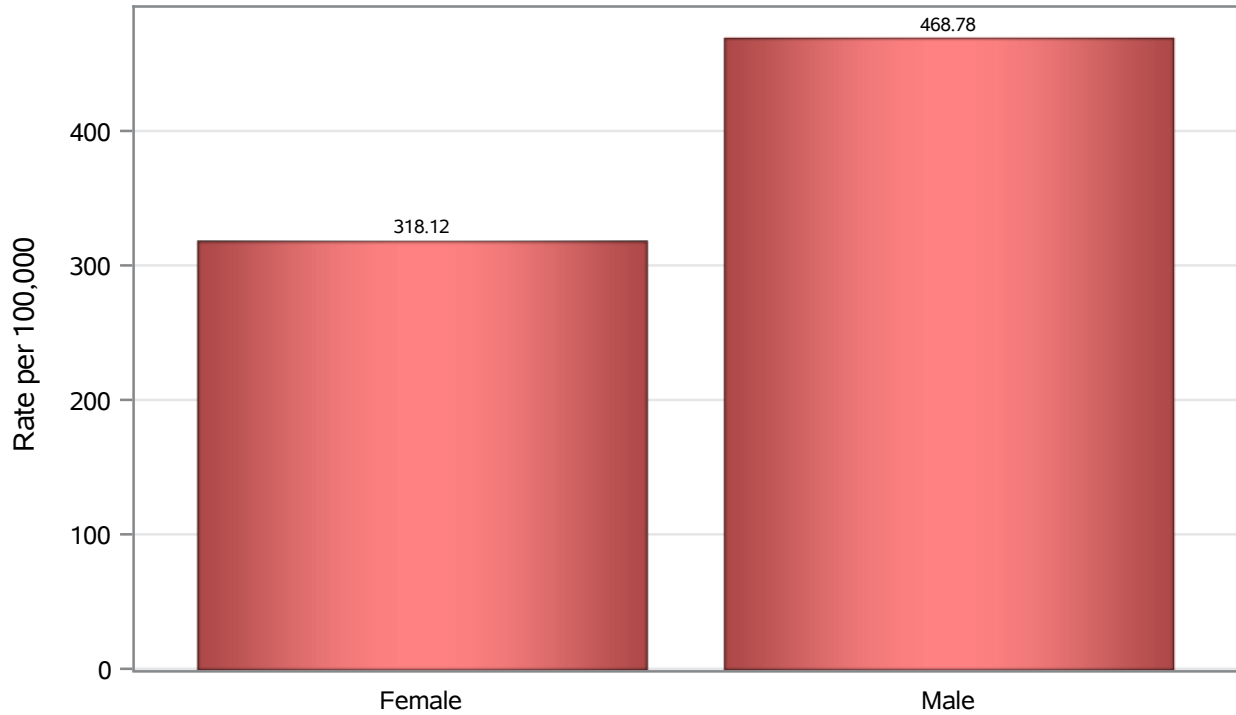


Investigations are ongoing; data are subject to change.

Reporting through 16JAN2023

North Las Vegas zip codes include 89030, 89031, 89032, 89033, 89036, 89081, 89084, 89085, 89086, 89087.

Death Birth Sex Rates in North Las Vegas



Investigations are ongoing; data are subject to change.

Reporting through 16JAN2023

North Las Vegas zip codes include 89030, 89031, 89032, 89033, 89036, 89081, 89084, 89085, 89086, 89087.

Table 7: Birth Sex and COVID19 in North Las Vegas

Case Status	Birth Sex Categories	N	%	Population	Rate per 100,000
Cases	Female	36111	53.7	118823	30391
	Male	30752	45.7	114980	26746
	Unknown	374	0.6	.	.
Hospitalizations	Female	1503	48.2	118823	1264.9
	Male	1612	51.7	114980	1402.0
	Unknown	3	0.1	.	.
Deaths	Female	378	41.2	118823	318.12
	Male	539	58.7	114980	468.78
	Unknown	1	0.1	.	.

Note1: Population data source for calculating rate estimates: U.S. Census Bureau, ACS 5-year estimate.

Note2: Rates for categories with fewer than 12 cases are suppressed due to high relative standard error.

Note3: Hospitalizations are regardless of deceased status; Deaths are regardless of hospitalization status

**Investigations are ongoing; data are subject to change.
Reporting through 16JAN2023**

North Las Vegas zip codes include 89030, 89031, 89032, 89033, 89036, 89081, 89084, 89085, 89086, 89087.