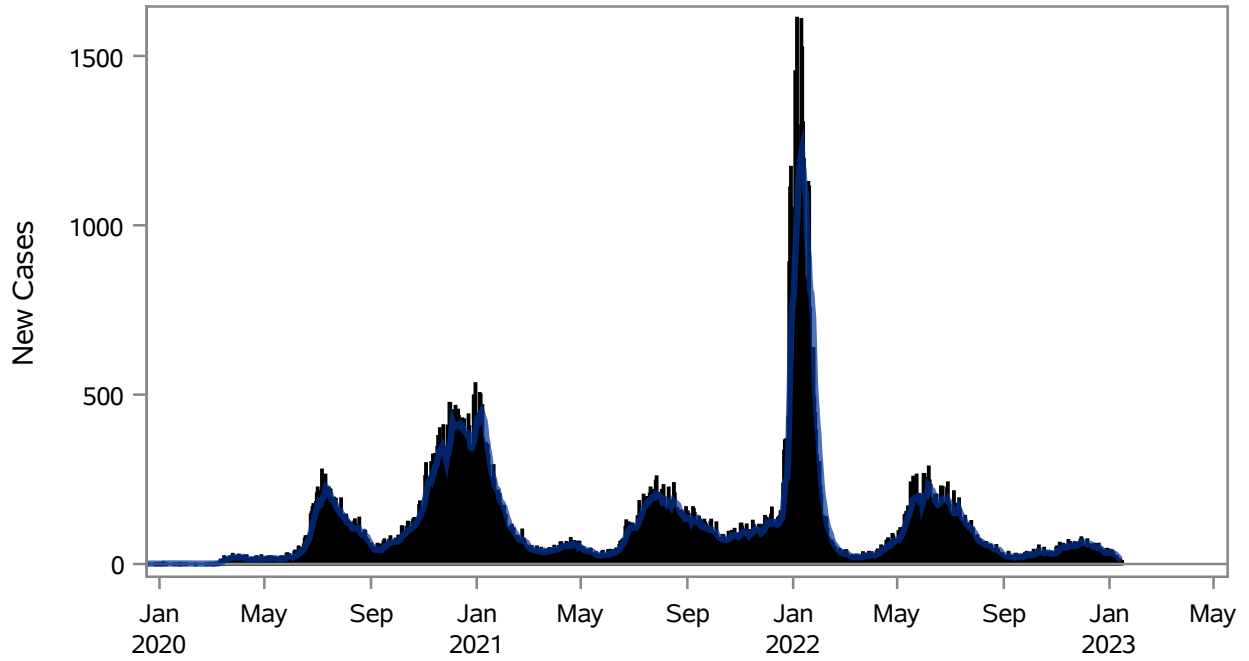


COVID19 Cases for Henderson, 7-Day Moving Average



■ New Cases — 7-Day Moving Average

Investigations are ongoing; data are subject to change.

Reporting through 16JAN2023

Henderson zip codes include 89002, 89011, 89012, 89014, 89015, 89044, 89052, 89074, 89119, 89120, 89122, 89123, 89124, 89183.

Table 1: New COVID19 Cases and 7-Day Moving Average in Henderson, Previous Two Weeks

Date (Daily)	New Cases	7-Day Moving Average
03JAN2023	33	35.00
04JAN2023	38	34.29
05JAN2023	32	32.57
06JAN2023	25	30.43
07JAN2023	16	29.57
08JAN2023	13	28.29
09JAN2023	23	25.71
10JAN2023	15	23.14
11JAN2023	14	19.71
12JAN2023	12	16.86
13JAN2023	12	15.00
14JAN2023	8	13.86

Note1: Event Date is calculated as follows based on completed information:

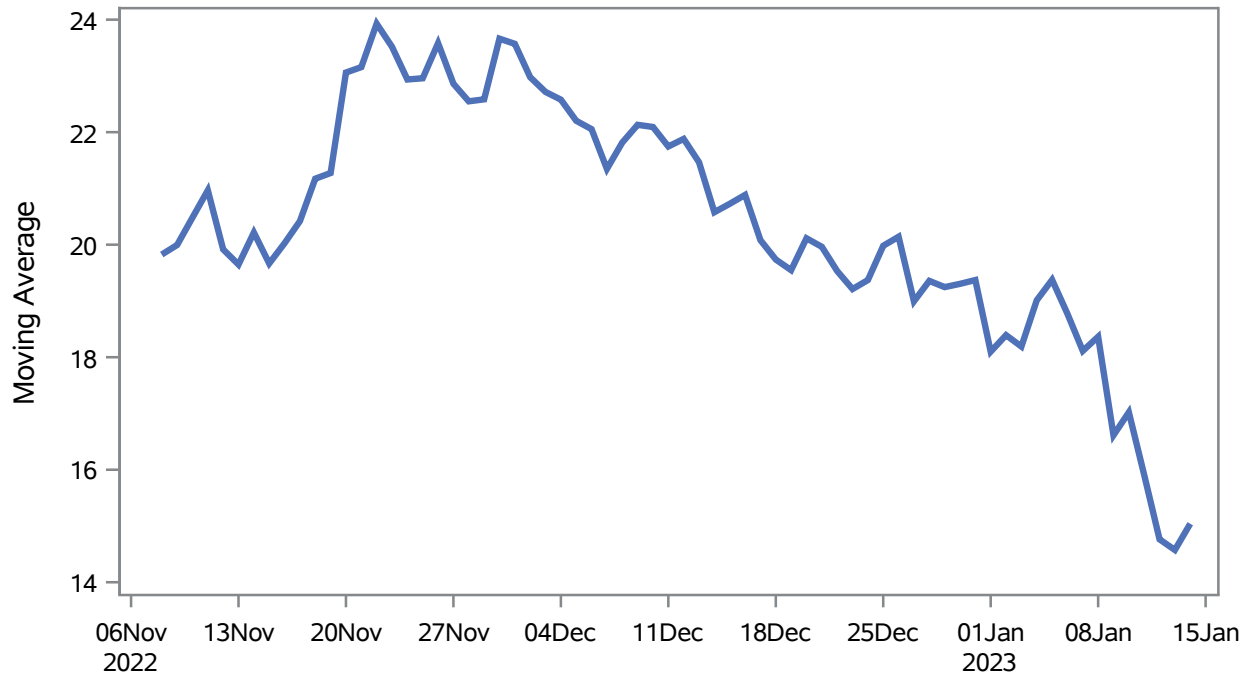
1) Disease onset date 2) Disease diagnosis date 3) Lab result collection date 4) Report date to SNHD.

Investigations are ongoing; data are subject to change.

Reporting through 16JAN2023

Henderson zip codes include 89002, 89011, 89012, 89014, 89015, 89044, 89052, 89074, 89119, 89120, 89122, 89123, 89124, 89183.

Percent of People Receiving COVID-19 Viral Tests Who Have Positive Results in Henderson



Investigations are ongoing; data are subject to change.

Reporting through 16JAN2023

Henderson zip codes include 89002, 89011, 89012, 89014, 89015, 89044, 89052, 89074, 89119, 89120, 89122, 89123, 89124, 89183.

Table 2: Percent of People Receiving COVID-19 Viral Tests Who Have Positive Results in Henderson

Collection Date	Positive	Negative	Equivocal	Total	% Positivity	7-Day Moving Average
31DEC2022	20	91		111	18.02	19.4
01JAN2023	17	103		120	14.17	18.1
02JAN2023	51	169		220	23.18	18.4
03JAN2023	36	199		235	15.32	18.2
04JAN2023	42	142		184	22.83	19.0
05JAN2023	37	139		176	21.02	19.4
06JAN2023	28	138		166	16.87	18.8
07JAN2023	26	168		194	13.40	18.1
08JAN2023	18	95		113	15.93	18.4
09JAN2023	19	155		174	10.92	16.6
10JAN2023	28	126		154	18.18	17.0
11JAN2023	23	130		153	15.03	15.9
12JAN2023	16	107		123	13.01	14.8
13JAN2023	23	125		148	15.54	14.6
14JAN2023	15	75		90	16.67	15.0

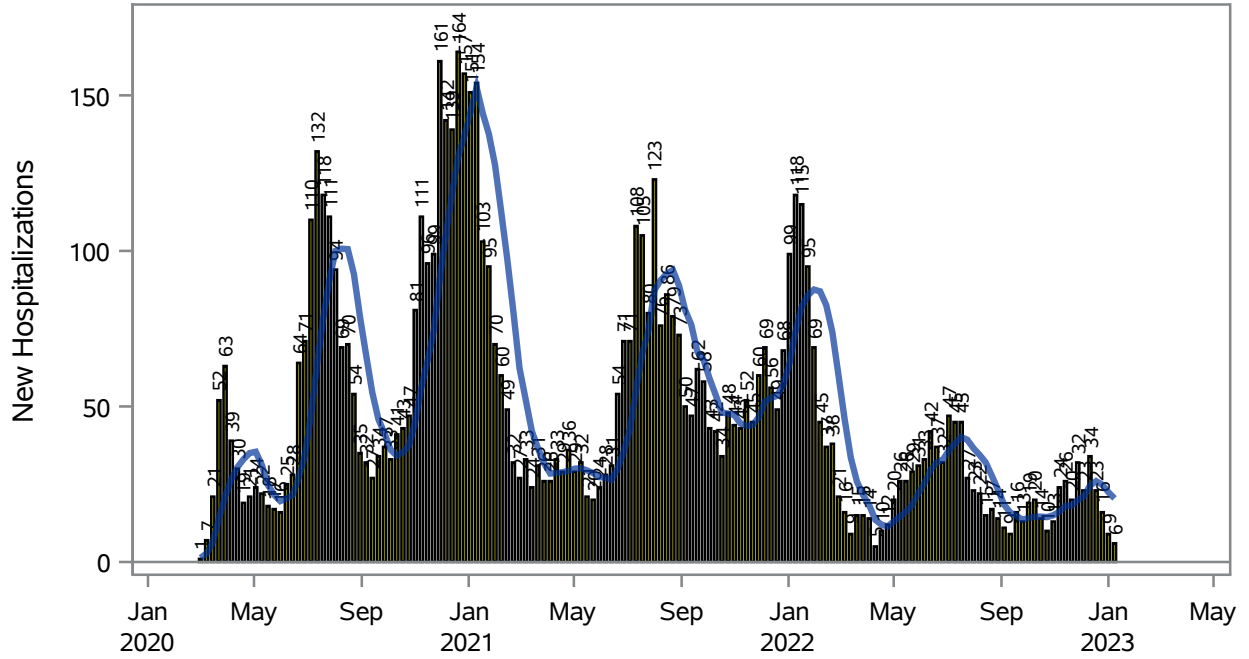
Note: Testing Data includes a 3 day delay

Investigations are ongoing; data are subject to change.

Reporting through 16JAN2023

Henderson zip codes include 89002, 89011, 89012, 89014, 89015, 89044, 89052, 89074, 89119, 89120, 89122, 89123, 89124, 89183.

COVID19 Hospitalizations for Henderson, 7-Day Moving Average



■ New Hospitalizations
 — 7-Day Moving Average

Investigations are ongoing; data are subject to change.

Reporting through 16JAN2023

Henderson zip codes include 89002, 89011, 89012, 89014, 89015, 89044, 89052, 89074, 89119, 89120, 89122, 89123, 89124, 89183.

Table 3: New COVID19-Related Hospitalizations and 7-Day Moving Average in Henderson, previous month

Week	Hospitalizations	7-Day Moving Average
18DEC2022	23	26.0
25DEC2022	16	24.9
01JAN2023	9	22.4
08JAN2023	6	20.4

Note1: Admission Date is calculated as follows based on completed information:
A) COVID19 Case is hospitalized B) COVID19 Case has a hospital admission date.

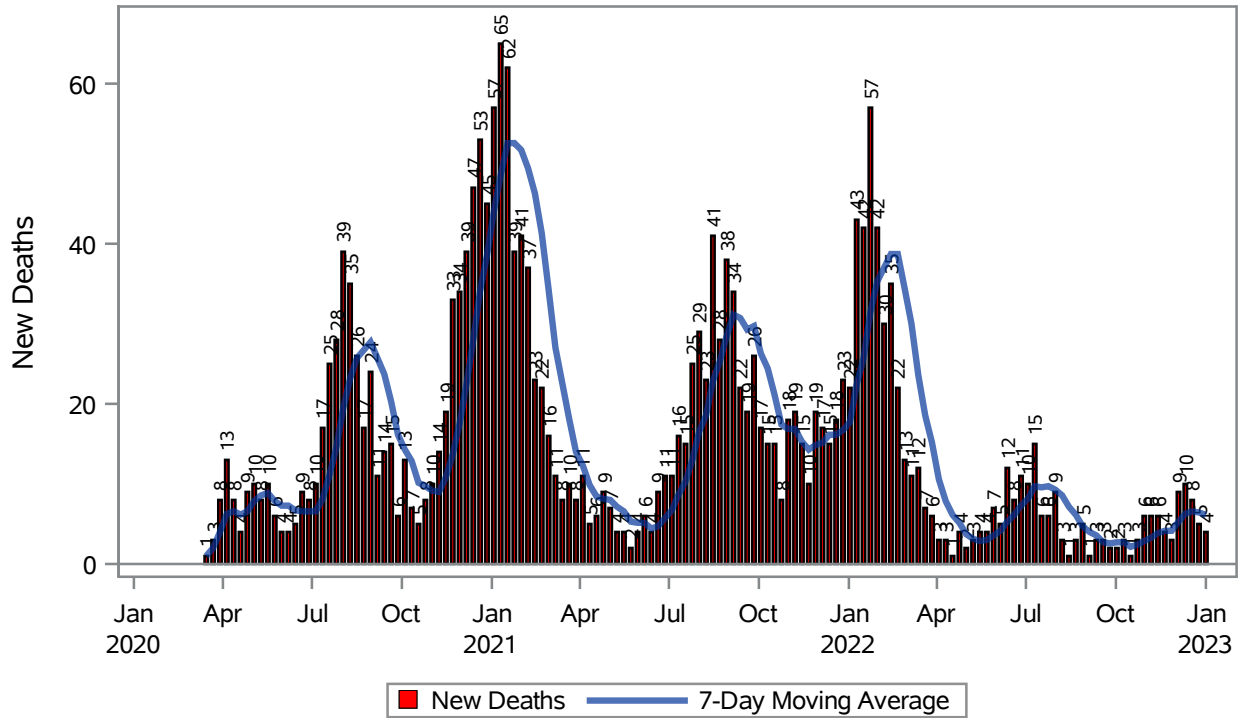
If admission date is missing, then the following is substituted temporarily, in order:
1) Disease onset date 2) Disease diagnosis date 3) Lab result collection date 4) Report date to SNHD.

Investigations are ongoing; data are subject to change.

Reporting through 16JAN2023

Henderson zip codes include 89002, 89011, 89012, 89014, 89015, 89044, 89052, 89074, 89119, 89120, 89122, 89123, 89124, 89183.

COVID19 Deaths for Henderson, 7-Day Moving Average



Investigations are ongoing; data are subject to change.

Reporting through 16JAN2023

Henderson zip codes include 89002, 89011, 89012, 89014, 89015, 89044, 89052, 89074, 89119, 89120, 89122, 89123, 89124, 89183.

Table 4: New COVID19-Related Deaths and 7-Day Moving Average in Henderson, Previous Month

Week	Deaths	7-Day Moving Average
18DEC2022	8	6.57
25DEC2022	5	6.43
01JAN2023	4	6.14

Note1: Date of Death is calculated as follows based on completed information:
A) COVID19 Case is reported as deceased B) COVID19 Case has a reported date of death.

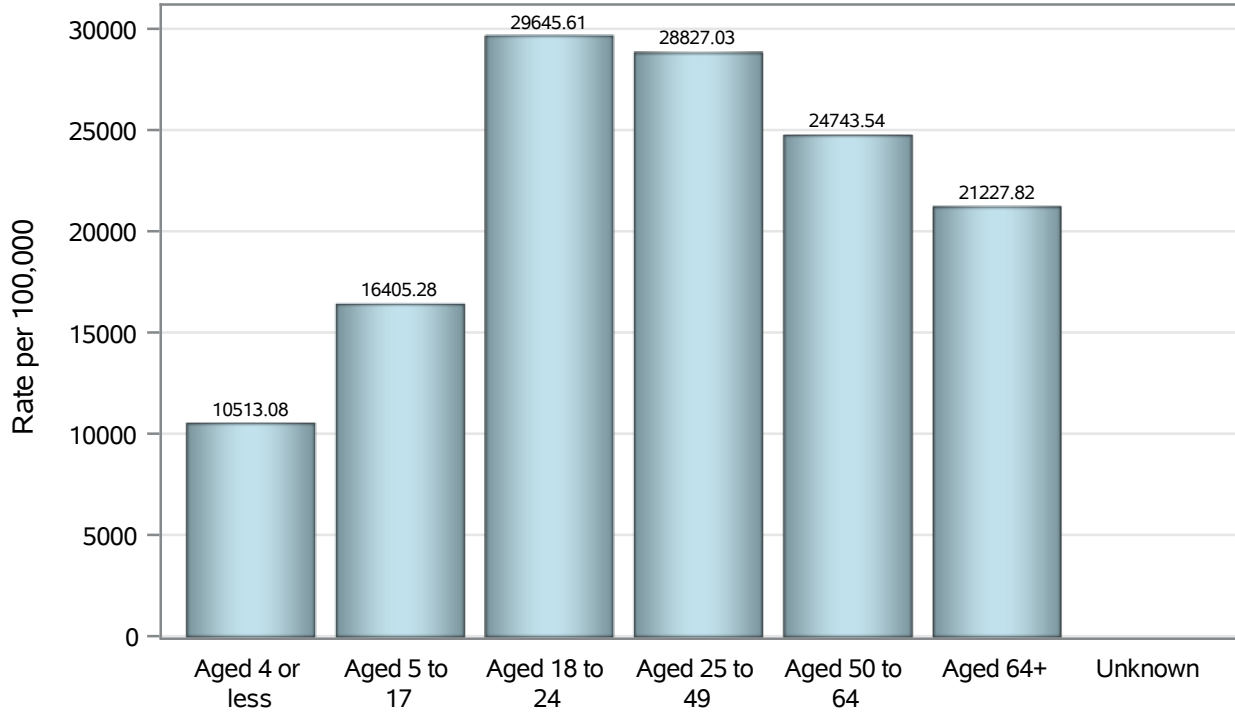
If date of death is missing, then the following is substituted temporarily, in order:
1) Disease onset date 2) Disease diagnosis date
3) Lab result collection date 4) Report date to SNHD.

Investigations are ongoing; data are subject to change.

Reporting through 16JAN2023

Henderson zip codes include 89002, 89011, 89012, 89014, 89015, 89044, 89052, 89074, 89119, 89120, 89122, 89123, 89124, 89183.

Case Age Rates in Henderson

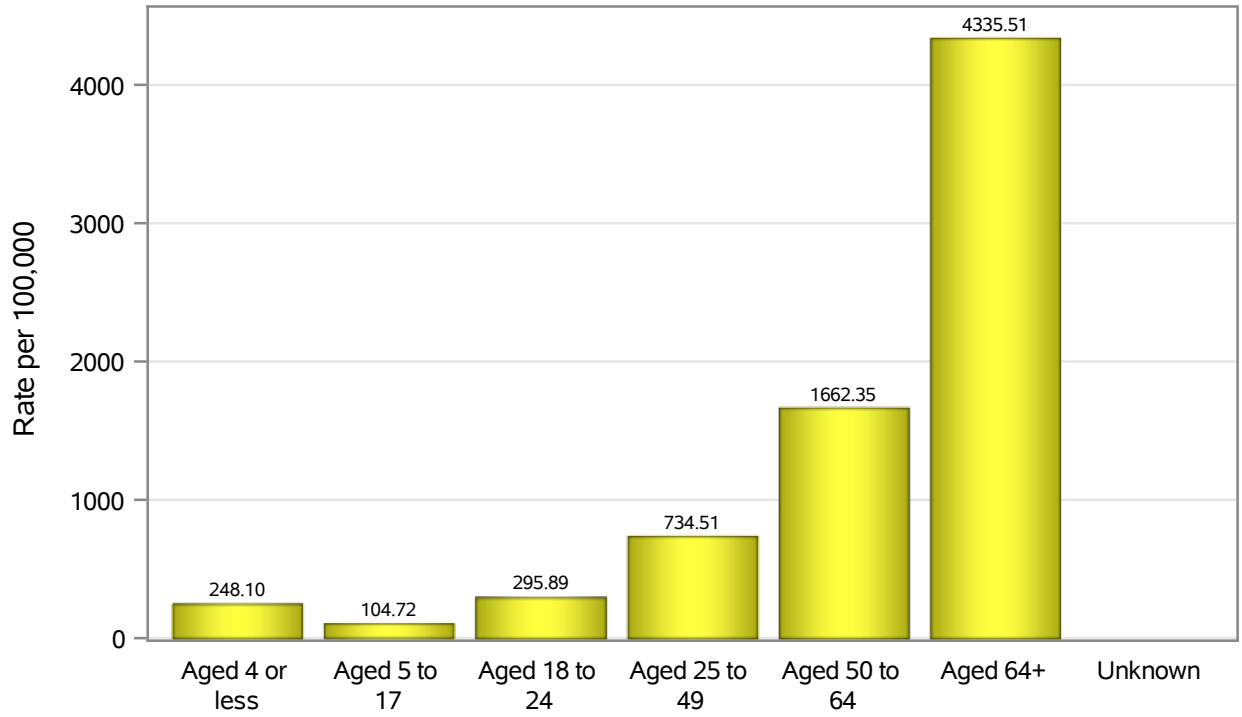


Investigations are ongoing; data are subject to change.

Reporting through 16JAN2023

Henderson zip codes include 89002, 89011, 89012, 89014, 89015, 89044, 89052, 89074, 89119, 89120, 89122, 89123, 89124, 89183.

Hospitalization Age Rates in Henderson

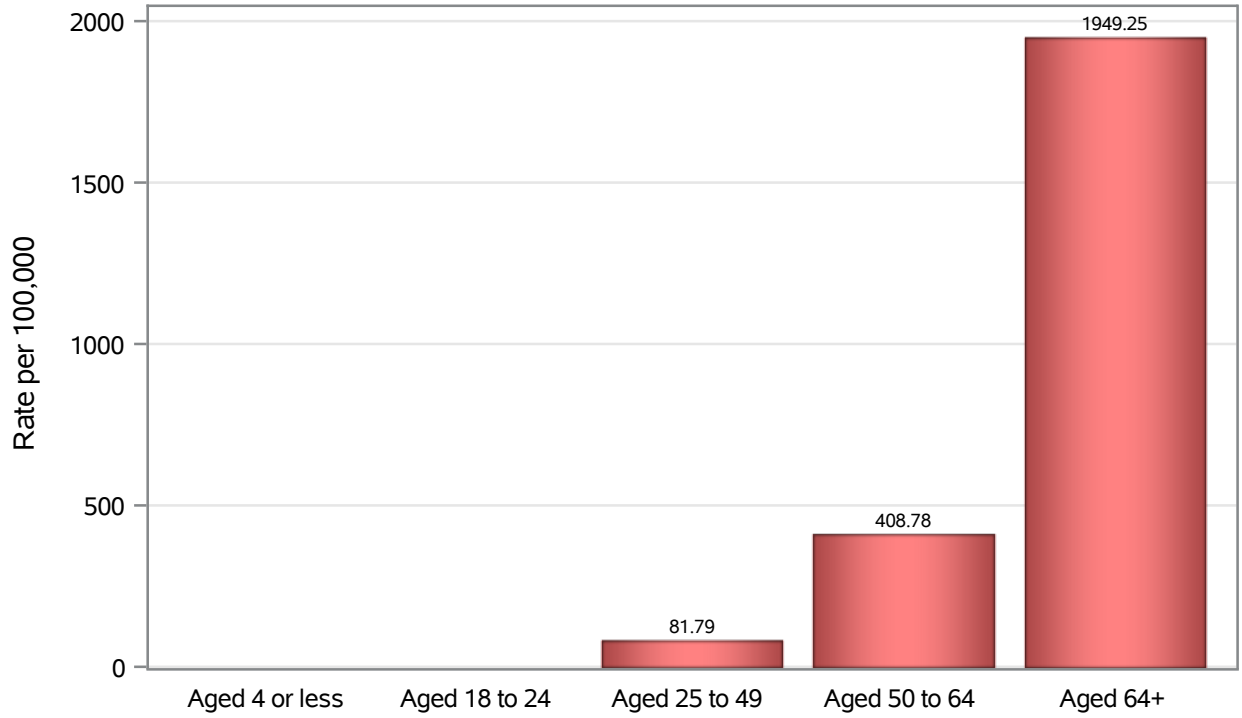


Investigations are ongoing; data are subject to change.

Reporting through 16JAN2023

Henderson zip codes include 89002, 89011, 89012, 89014, 89015, 89044, 89052, 89074, 89119, 89120, 89122, 89123, 89124, 89183.

Death Age Rates in Henderson



Investigations are ongoing; data are subject to change.

Reporting through 16JAN2023

Henderson zip codes include 89002, 89011, 89012, 89014, 89015, 89044, 89052, 89074, 89119, 89120, 89122, 89123, 89124, 89183.

Table 5: Age and COVID19 in Henderson

Case Status	Age Categories	N	%	Population	Rate per 100,000
Cases	Aged 4 or less	3051	2.4	29,021	10513
	Aged 5 to 17	13473	10.6	82,126	16405
	Aged 18 to 24	13125	10.3	44,273	29646
	Aged 25 to 49	53925	42.3	187064	28827
	Aged 50 to 64	25423	20.0	102746	24744
	Aged 64+	18361	14.4	86,495	21228
	Unknown	26	0.0	.	.
Hospitalizations	Aged 4 or less	72	1.0	29,021	248.10
	Aged 5 to 17	86	1.2	82,126	104.72
	Aged 18 to 24	131	1.8	44,273	295.89
	Aged 25 to 49	1374	19.3	187064	734.51
	Aged 50 to 64	1708	24.0	102746	1662.4
	Aged 64+	3750	52.7	86,495	4335.5
	Unknown	1	0.0	.	.
Deaths	Aged 4 or less	1	0.0	29,021	.
	Aged 18 to 24	4	0.2	44,273	.
	Aged 25 to 49	153	6.8	187064	81.79
	Aged 50 to 64	420	18.6	102746	408.78
	Aged 64+	1686	74.5	86,495	1949.2

Note1: Population data source for calculating rate estimates: U.S. Census Bureau, ACS 5-year estimate.

Note2: Rates for categories with fewer than 12 cases are suppressed due to high relative standard error.

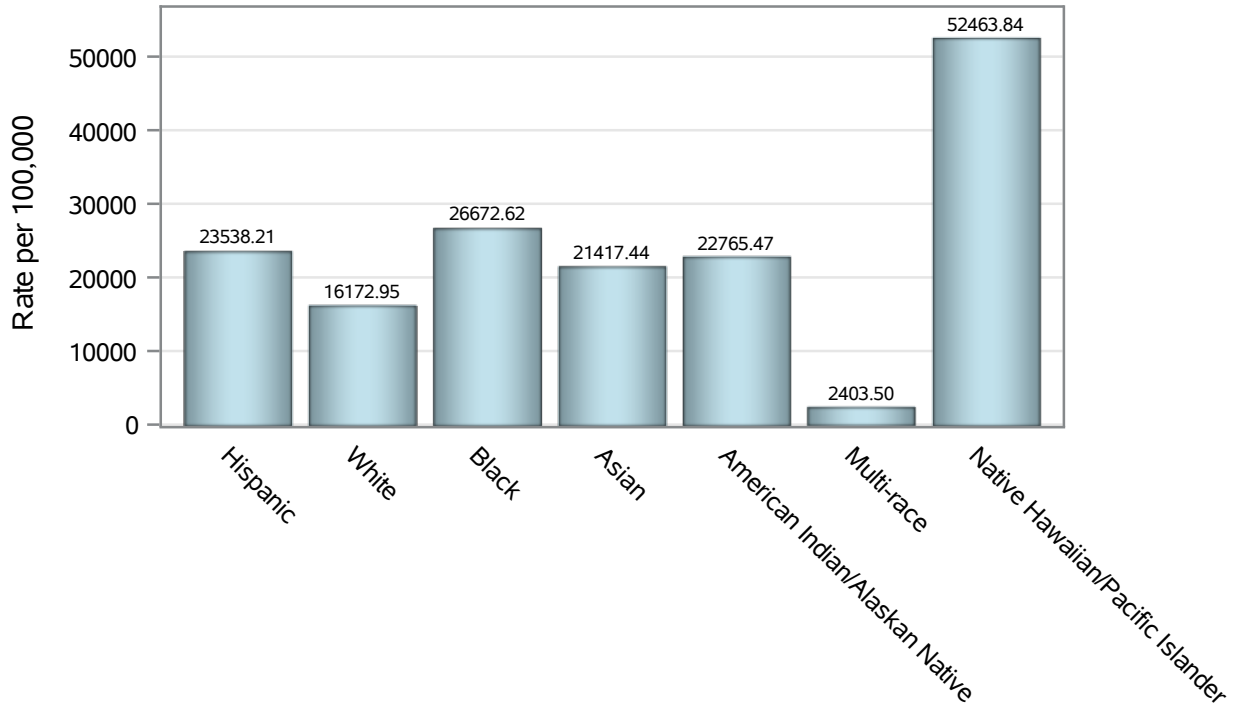
Note3: Hospitalizations are regardless of deceased status; Deaths are regardless of hospitalization status

Investigations are ongoing; data are subject to change.

Reporting through 16JAN2023

Henderson zip codes include 89002, 89011, 89012, 89014, 89015, 89044, 89052, 89074, 89119, 89120, 89122, 89123, 89124, 89183.

Case Race/Ethnicity Rates in Henderson

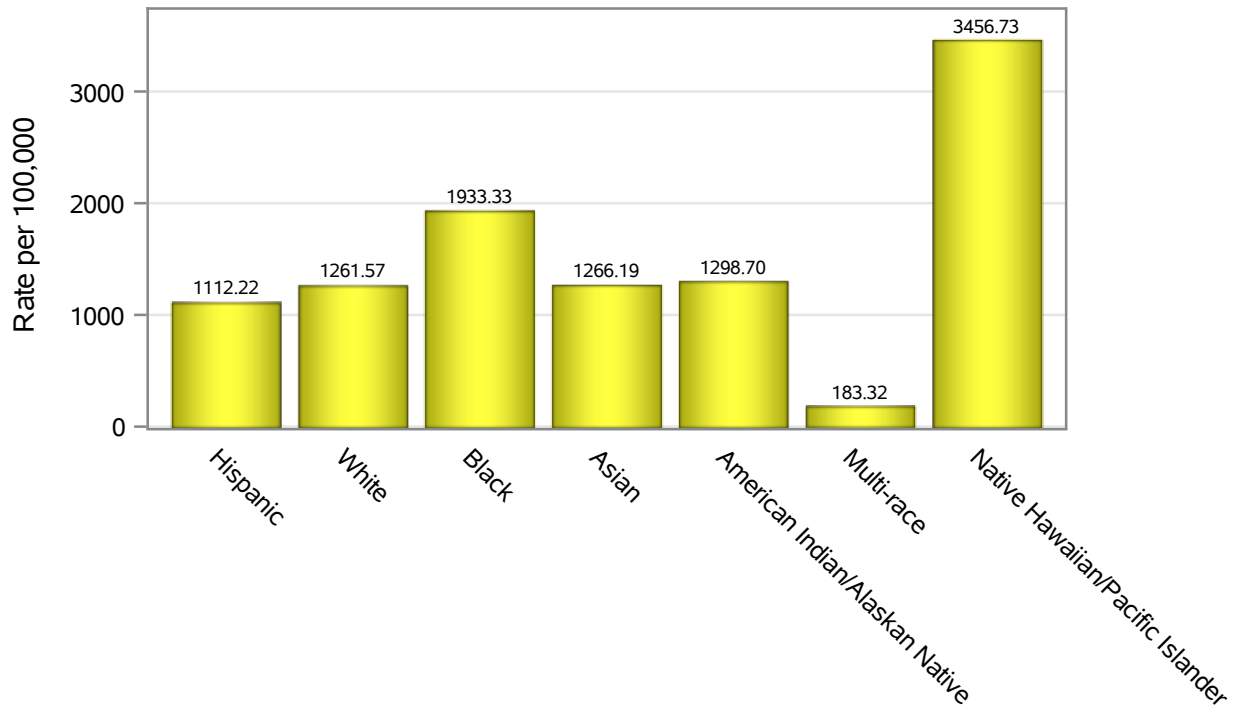


Investigations are ongoing; data are subject to change.

Reporting through 16JAN2023

Henderson zip codes include 89002, 89011, 89012, 89014, 89015, 89044, 89052, 89074, 89119, 89120, 89122, 89123, 89124, 89183.

Hospitalization Race/Ethnicity Rates in Henderson

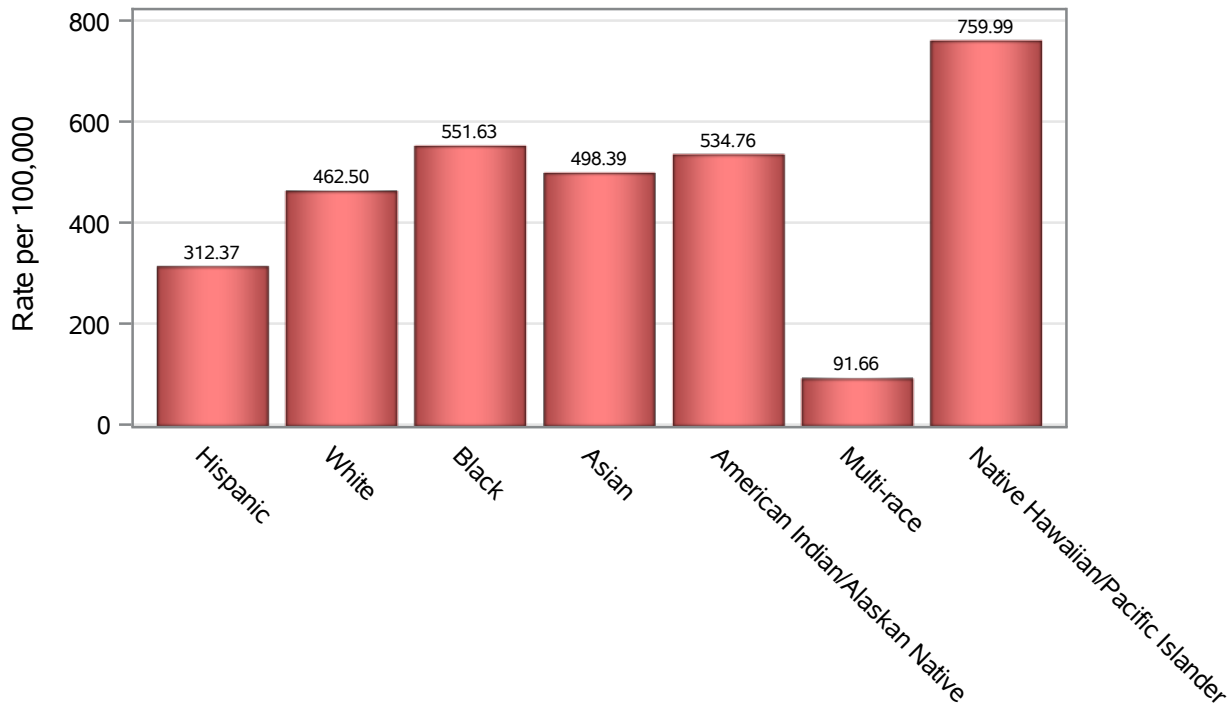


Investigations are ongoing; data are subject to change.

Reporting through 16JAN2023

Henderson zip codes include 89002, 89011, 89012, 89014, 89015, 89044, 89052, 89074, 89119, 89120, 89122, 89123, 89124, 89183.

Death Race/Ethnicity Rates in Henderson



Investigations are ongoing; data are subject to change.

Reporting through 16JAN2023

Henderson zip codes include 89002, 89011, 89012, 89014, 89015, 89044, 89052, 89074, 89119, 89120, 89122, 89123, 89124, 89183.

Table 6: Race/Ethnicity and COVID19 in Henderson

Case Status	Race Ethnicity Categories	N	%	Population	Rate per 100,000
Cases	Hispanic	28634	22.5	121649	23538
	White	47138	37.0	291462	16173
	Black	10154	8.0	38,069	26673
	Asian	11130	8.7	51,967	21417
	American Indian/Alaskan Native	596	0.5	2,618	22765
	Multi-race	472	0.4	19,638	2403.5
	Native Hawaiian/Pacific Islander	2140	1.7	4,079	52464
	Unknown	27120	21.3	.	.
Hospitalizations	Hispanic	1353	19.0	121649	1112.2
	White	3677	51.6	291462	1261.6
	Black	736	10.3	38,069	1933.3
	Asian	658	9.2	51,967	1266.2
	American Indian/Alaskan Native	34	0.5	2,618	1298.7
	Multi-race	36	0.5	19,638	183.32
	Native Hawaiian/Pacific Islander	141	2.0	4,079	3456.7
	Unknown	487	6.8	.	.
Deaths	Hispanic	380	16.8	121649	312.37
	White	1348	59.5	291462	462.50
	Black	210	9.3	38,069	551.63
	Asian	259	11.4	51,967	498.39
	American Indian/Alaskan Native	14	0.6	2,618	534.76
	Multi-race	18	0.8	19,638	91.66
	Native Hawaiian/Pacific Islander	31	1.4	4,079	759.99
	Unknown	4	0.2	.	.

Note1: Population data source for calculating rate estimates: U.S. Census Bureau, ACS 5-year estimate.

Note2: Rates for categories with fewer than 12 cases are suppressed due to high relative standard error.

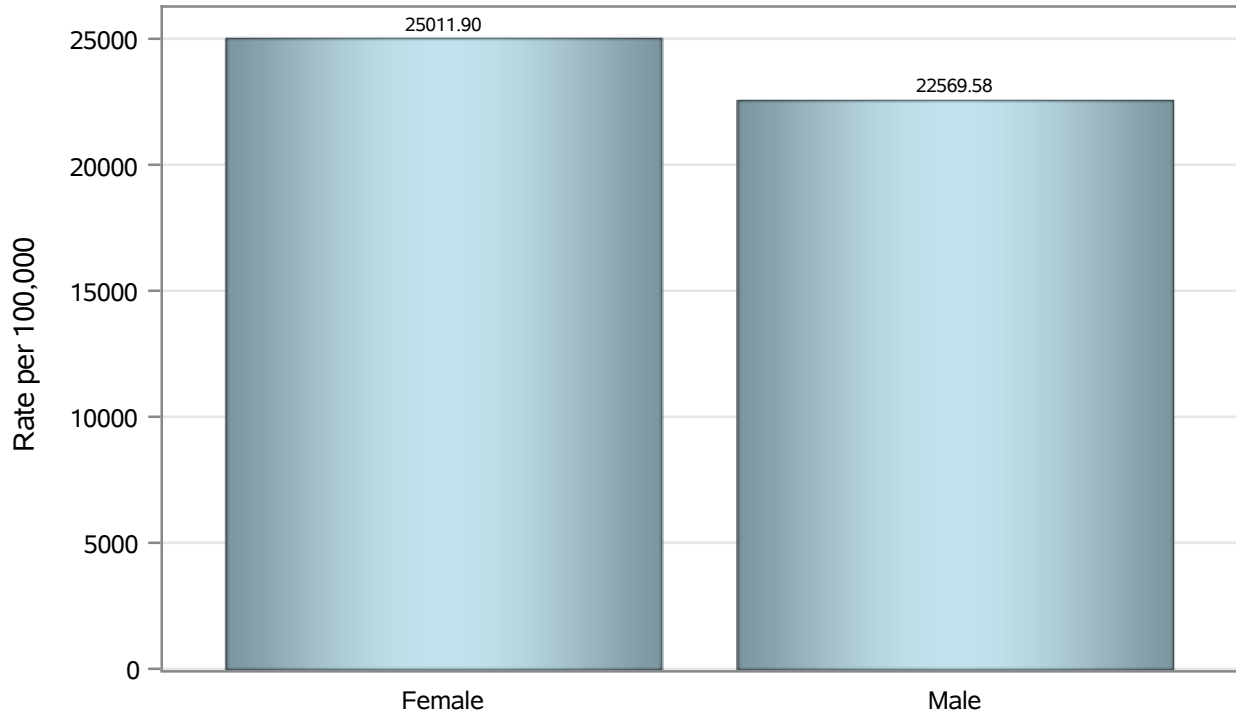
Note3: Hospitalizations are regardless of deceased status; Deaths are regardless of hospitalization status

Investigations are ongoing; data are subject to change.

Reporting through 16JAN2023

Henderson zip codes include 89002, 89011, 89012, 89014, 89015, 89044, 89052, 89074, 89119, 89120, 89122, 89123, 89124, 89183.

Case Birth Sex Rates in Henderson

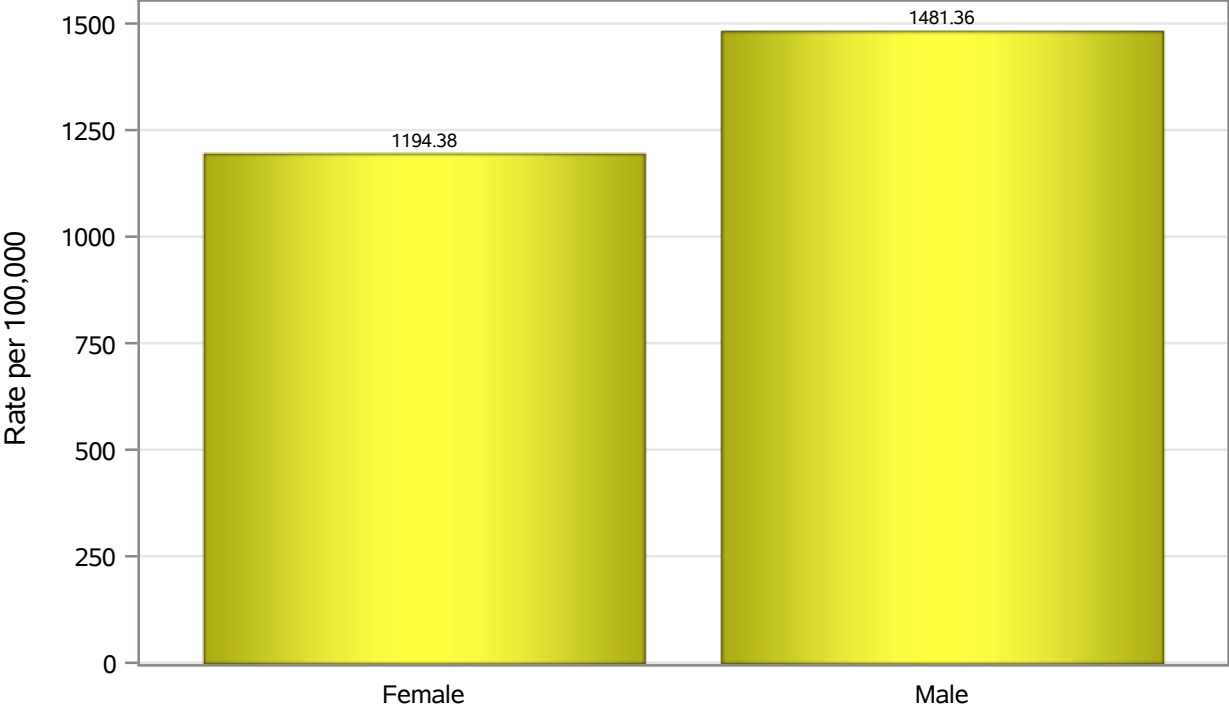


Investigations are ongoing; data are subject to change.

Reporting through 16JAN2023

Henderson zip codes include 89002, 89011, 89012, 89014, 89015, 89044, 89052, 89074, 89119, 89120, 89122, 89123, 89124, 89183.

Hospitalization Birth Sex Rates in Henderson

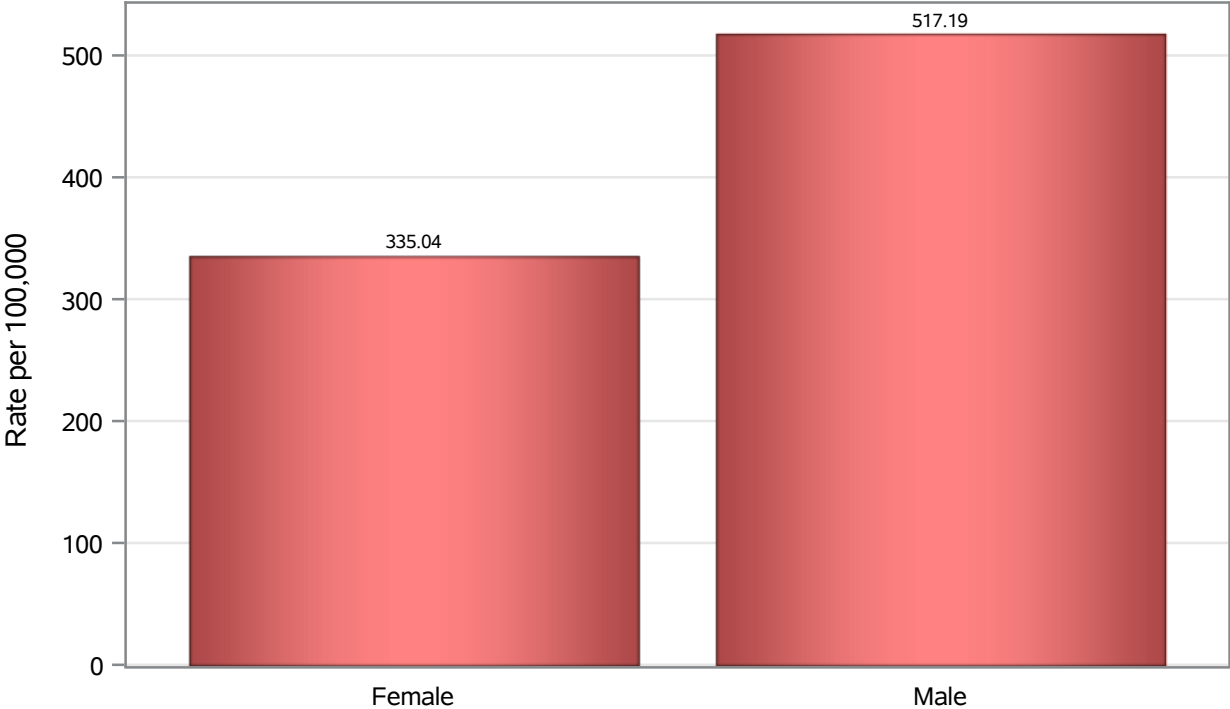


Investigations are ongoing; data are subject to change.

Reporting through 16JAN2023

Henderson zip codes include 89002, 89011, 89012, 89014, 89015, 89044, 89052, 89074, 89119, 89120, 89122, 89123, 89124, 89183.

Death Birth Sex Rates in Henderson



Investigations are ongoing; data are subject to change.
Reporting through 16JAN2023

Henderson zip codes include 89002, 89011, 89012, 89014, 89015, 89044, 89052, 89074, 89119, 89120, 89122, 89123, 89124, 89183.

Table 7: Birth Sex and COVID19 in Henderson

Case Status	Birth Sex Categories	N	%	Population	Rate per 100,000
Cases	Female	66740	52.4	266833	25012
	Male	59785	46.9	264892	22570
	Unknown	859	0.7	.	.
Hospitalizations	Female	3187	44.7	266833	1194.4
	Male	3924	55.1	264892	1481.4
	Unknown	11	0.2	.	.
Deaths	Female	894	39.5	266833	335.04
	Male	1370	60.5	264892	517.19

Note1: Population data source for calculating rate estimates: U.S. Census Bureau, ACS 5-year estimate.

Note2: Rates for categories with fewer than 12 cases are suppressed due to high relative standard error.

Note3: Hospitalizations are regardless of deceased status; Deaths are regardless of hospitalization status

Investigations are ongoing; data are subject to change.

Reporting through 16JAN2023

Henderson zip codes include 89002, 89011, 89012, 89014, 89015, 89044, 89052, 89074, 89119, 89120, 89122, 89123, 89124, 89183.