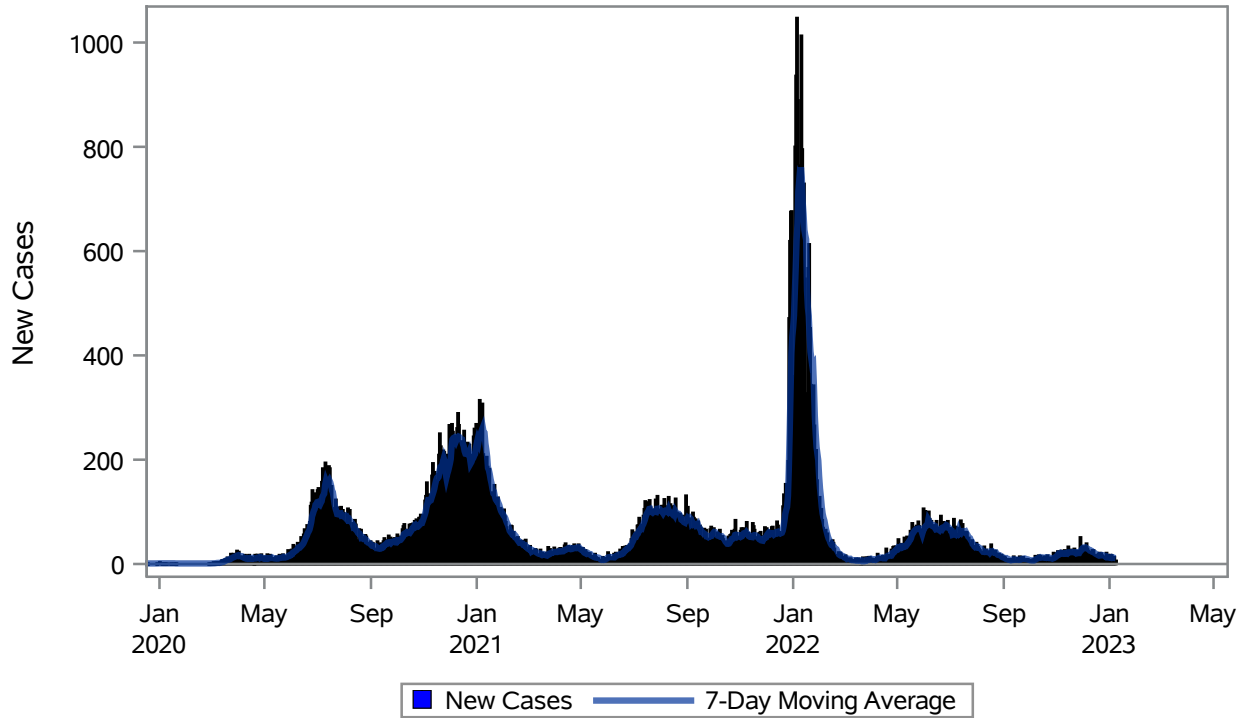


COVID19 Cases for North Las Vegas, 7-Day Moving Average



Investigations are ongoing; data are subject to change.

Reporting through 09JAN2023

North Las Vegas zip codes include 89030, 89031, 89032, 89033, 89036, 89081, 89084, 89085, 89086, 89087.

Table 1: New COVID19 Cases and 7-Day Moving Average in North Las Vegas, Previous Two Weeks

Date (Daily)	New Cases	7-Day Moving Average
27DEC2022	11	14.43
28DEC2022	21	14.86
29DEC2022	5	12.71
30DEC2022	17	12.86
31DEC2022	8	12.43
01JAN2023	8	12.00
02JAN2023	17	12.43
03JAN2023	16	13.14
04JAN2023	12	11.86
05JAN2023	10	12.57
06JAN2023	13	12.00
07JAN2023	4	11.43

Note1: Event Date is calculated as follows based on completed information:

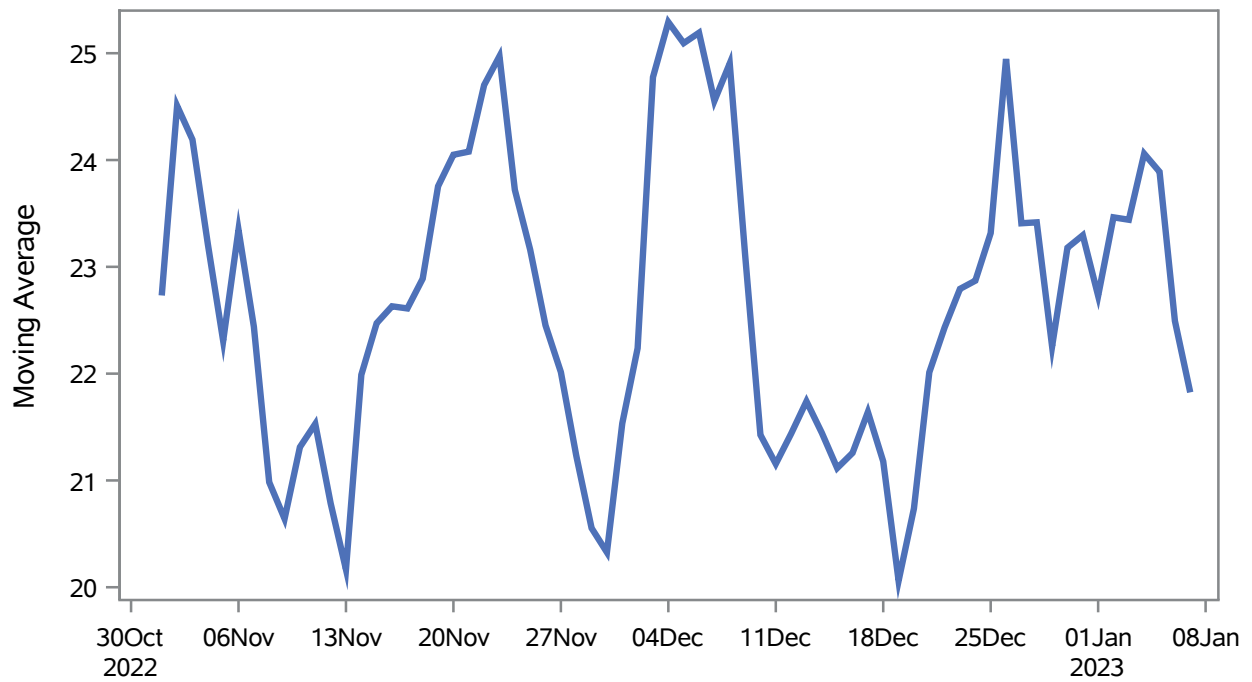
1) Disease onset date 2) Disease diagnosis date 3) Lab result collection date 4) Report date to SNHD.

Investigations are ongoing; data are subject to change.

Reporting through 09JAN2023

North Las Vegas zip codes include 89030, 89031, 89032, 89033, 89036, 89081, 89084, 89085, 89086, 89087.

Percent of People Receiving COVID-19 Viral Tests Who Have Positive Results in North Las Vegas



Investigations are ongoing; data are subject to change.

Reporting through 09JAN2023

North Las Vegas zip codes include 89030, 89031, 89032, 89033, 89036, 89081, 89084, 89085, 89086, 89087.

Table 2: Percent of People Receiving COVID-19 Viral Tests Who Have Positive Results in North Las Vegas

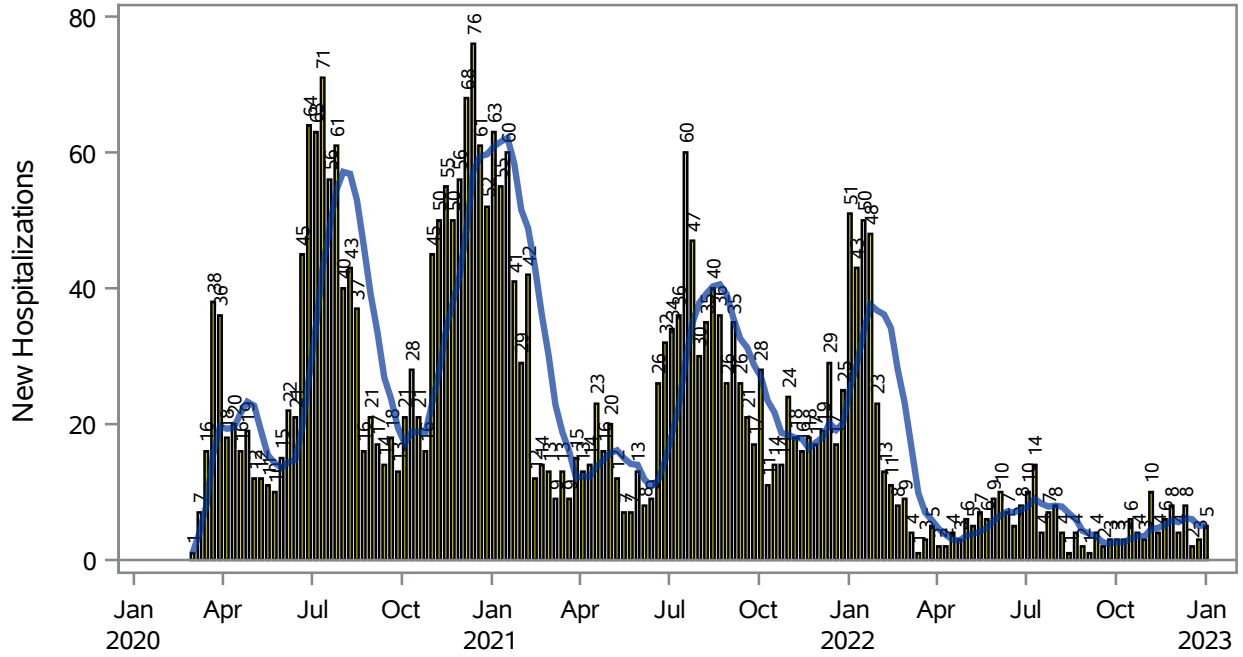
Collection Date	Positive	Negative	Equivocal	Total	% Positivity	7-Day Moving Average
24DEC2022	18	48		66	27.27	22.9
25DEC2022	12	38	1	51	23.53	23.3
26DEC2022	32	86		118	27.12	24.9
27DEC2022	38	229		267	14.23	23.4
28DEC2022	30	88		118	25.42	23.4
29DEC2022	28	121		149	18.79	22.3
30DEC2022	22	63		85	25.88	23.2
31DEC2022	25	64		89	28.09	23.3
01JAN2023	9	37		46	19.57	22.7
02JAN2023	40	84		124	32.26	23.5
03JAN2023	38	229	3	270	14.07	23.4
04JAN2023	36	85		121	29.75	24.1
05JAN2023	25	117		142	17.61	23.9
06JAN2023	29	151		180	16.11	22.5
07JAN2023	22	72		94	23.40	21.8

Note: Testing Data includes a 3 day delay

**Investigations are ongoing; data are subject to change.
Reporting through 09JAN2023**

North Las Vegas zip codes include 89030, 89031, 89032, 89033, 89036, 89081, 89084, 89085, 89086, 89087.

COVID19 Hospitalizations for North Las Vegas, 7-Day Moving Average



■ New Hospitalizations
 — 7-Day Moving Average

Investigations are ongoing; data are subject to change.

Reporting through 09JAN2023

North Las Vegas zip codes include 89030, 89031, 89032, 89033, 89036, 89081, 89084, 89085, 89086, 89087.

Table 3: New COVID19-Related Hospitalizations and 7-Day Moving Average in North Las Vegas, previous month

Week	Hospitalizations	7-Day Moving Average
11DEC2022	8	6.14
18DEC2022	2	6.00
25DEC2022	3	5.00
01JAN2023	5	5.14

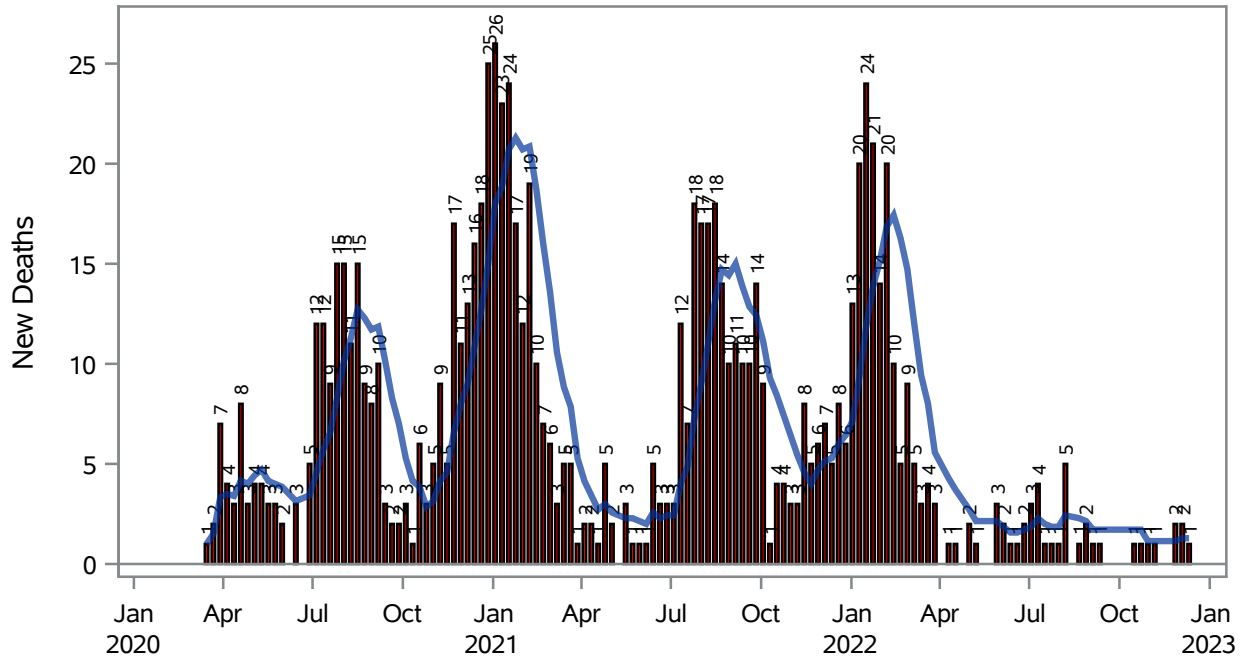
Note1: Admission Date is calculated as follows based on completed information:
A) COVID19 Case is hospitalized B) COVID19 Case has a hospital admission date.

If admission date is missing, then the following is substituted temporarily, in order:
1) Disease onset date 2) Disease diagnosis date 3) Lab result collection date 4) Report date to SNHD.

**Investigations are ongoing; data are subject to change.
Reporting through 09JAN2023**

North Las Vegas zip codes include 89030, 89031, 89032, 89033, 89036, 89081, 89084, 89085, 89086, 89087.

COVID19 Deaths for North Las Vegas, 7-Day Moving Average



■ New Deaths — 7-Day Moving Average

Investigations are ongoing; data are subject to change.

Reporting through 09JAN2023

North Las Vegas zip codes include 89030, 89031, 89032, 89033, 89036, 89081, 89084, 89085, 89086, 89087.

Table 4: New COVID19-Related Deaths and 7-Day Moving Average in North Las Vegas, Previous Month

Week	Deaths	7-Day Moving Average
11DEC2022	1	1.29

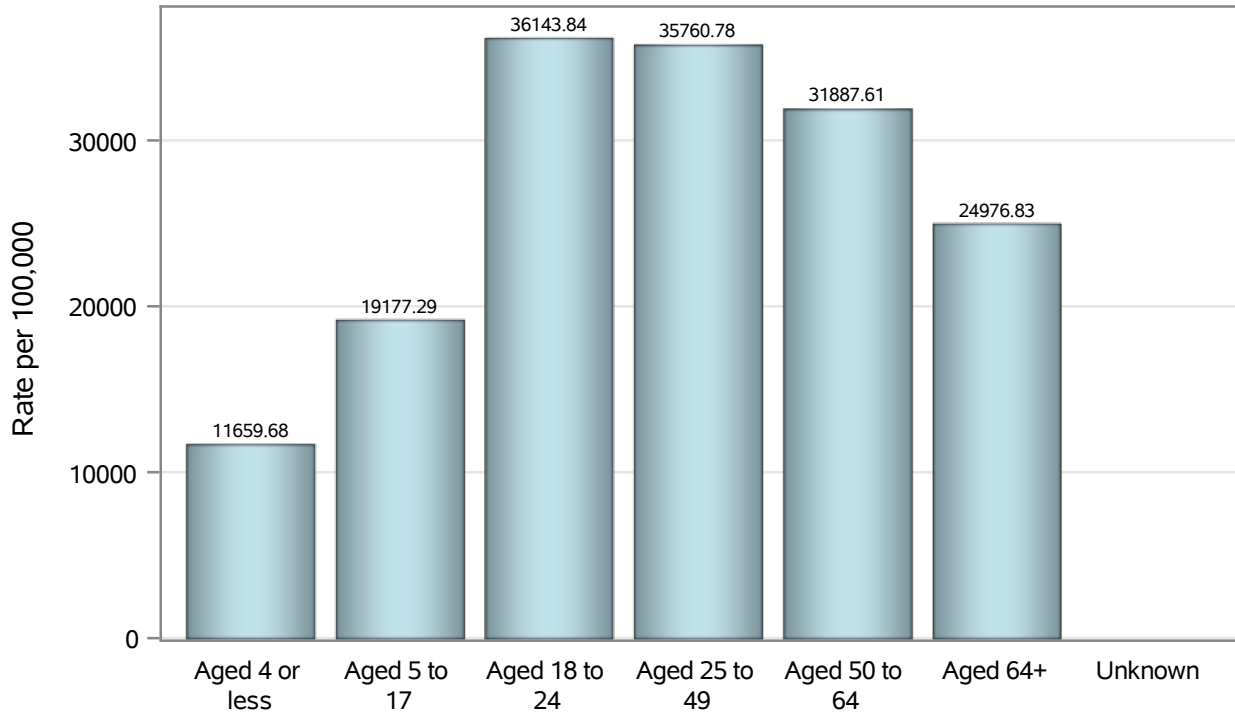
Note1: Date of Death is calculated as follows based on completed information:
A) COVID19 Case is reported as deceased B) COVID19 Case has a reported date of death.

If date of death is missing, then the following is substituted temporarily, in order:
1) Disease onset date 2) Disease diagnosis date
3) Lab result collection date 4) Report date to SNHD.

**Investigations are ongoing; data are subject to change.
Reporting through 09JAN2023**

North Las Vegas zip codes include 89030, 89031, 89032, 89033, 89036, 89081, 89084, 89085, 89086, 89087.

Case Age Rates in North Las Vegas

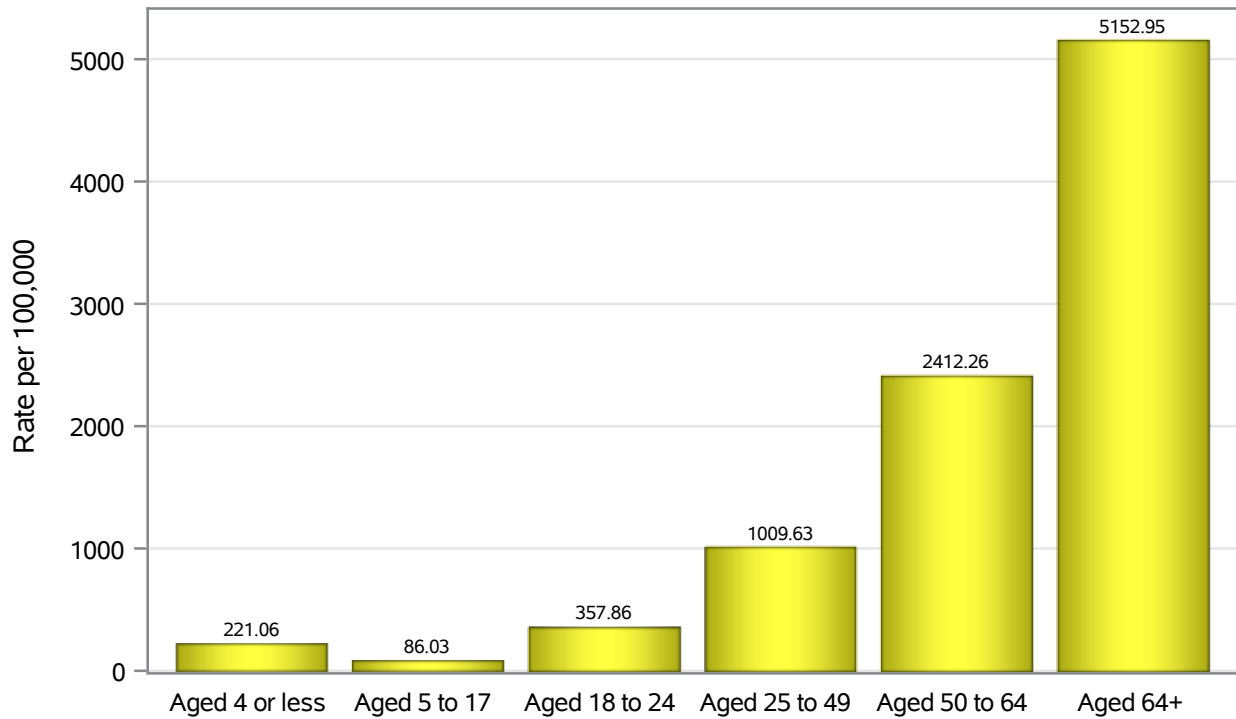


Investigations are ongoing; data are subject to change.

Reporting through 09JAN2023

North Las Vegas zip codes include 89030, 89031, 89032, 89033, 89036, 89081, 89084, 89085, 89086, 89087.

Hospitalization Age Rates in North Las Vegas

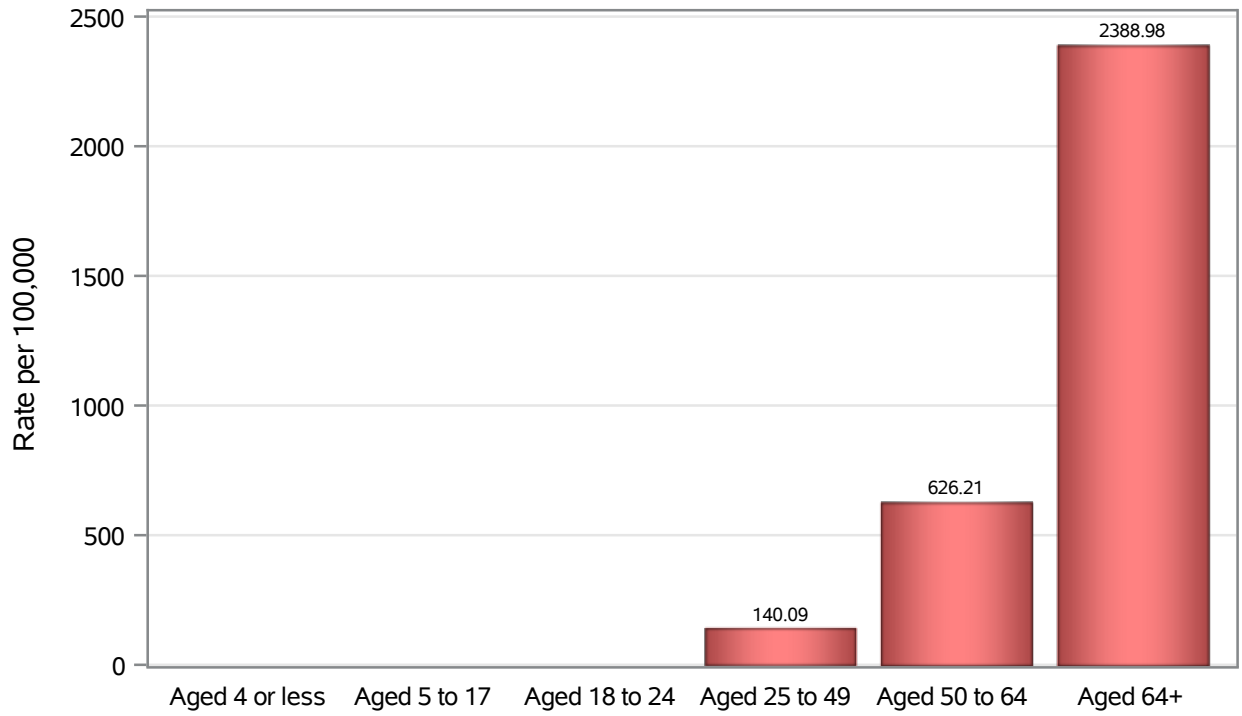


Investigations are ongoing; data are subject to change.

Reporting through 09JAN2023

North Las Vegas zip codes include 89030, 89031, 89032, 89033, 89036, 89081, 89084, 89085, 89086, 89087.

Death Age Rates in North Las Vegas



Investigations are ongoing; data are subject to change.

Reporting through 09JAN2023

North Las Vegas zip codes include 89030, 89031, 89032, 89033, 89036, 89081, 89084, 89085, 89086, 89087.

Table 5: Age and COVID19 in North Las Vegas

Case Status	Age Categories	N	%	Population	Rate per 100,000
Cases	Aged 4 or less	2057	3.1	17,642	11660
	Aged 5 to 17	9585	14.3	49,981	19177
	Aged 18 to 24	8282	12.3	22,914	36144
	Aged 25 to 49	29611	44.1	82,803	35761
	Aged 50 to 64	11712	17.4	36,729	31888
	Aged 64+	5928	8.8	23,734	24977
	Unknown	14	0.0	.	.
Hospitalizations	Aged 4 or less	39	1.3	17,642	221.06
	Aged 5 to 17	43	1.4	49,981	86.03
	Aged 18 to 24	82	2.6	22,914	357.86
	Aged 25 to 49	836	26.9	82,803	1009.6
	Aged 50 to 64	886	28.5	36,729	2412.3
	Aged 64+	1223	39.3	23,734	5152.9
	Deaths	Aged 4 or less	2	0.2	17,642
Aged 5 to 17		1	0.1	49,981	.
Aged 18 to 24		2	0.2	22,914	.
Aged 25 to 49		116	12.6	82,803	140.09
Aged 50 to 64		230	25.1	36,729	626.21
Aged 64+		567	61.8	23,734	2389.0

Note1: Population data source for calculating rate estimates: U.S. Census Bureau, ACS 5-year estimate.

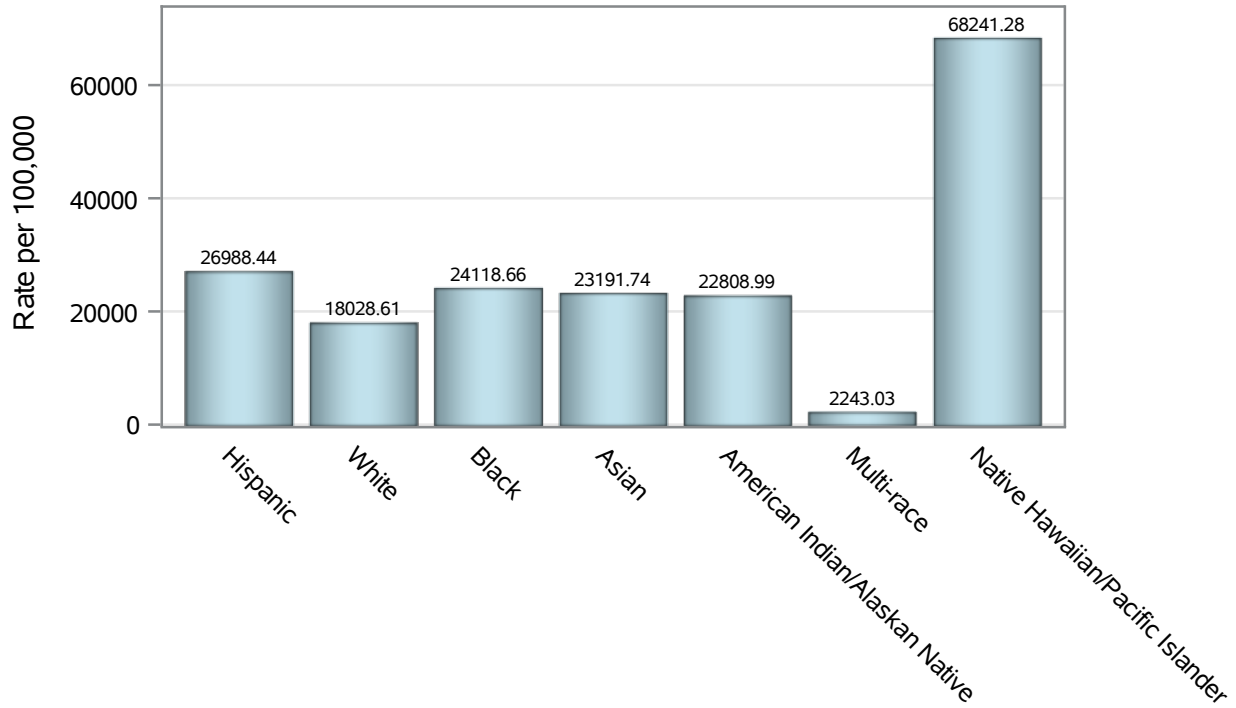
Note2: Rates for categories with fewer than 12 cases are suppressed due to high relative standard error.

Note3: Hospitalizations are regardless of deceased status; Deaths are regardless of hospitalization status

**Investigations are ongoing; data are subject to change.
Reporting through 09JAN2023**

North Las Vegas zip codes include 89030, 89031, 89032, 89033, 89036, 89081, 89084, 89085, 89086, 89087.

Case Race/Ethnicity Rates in North Las Vegas

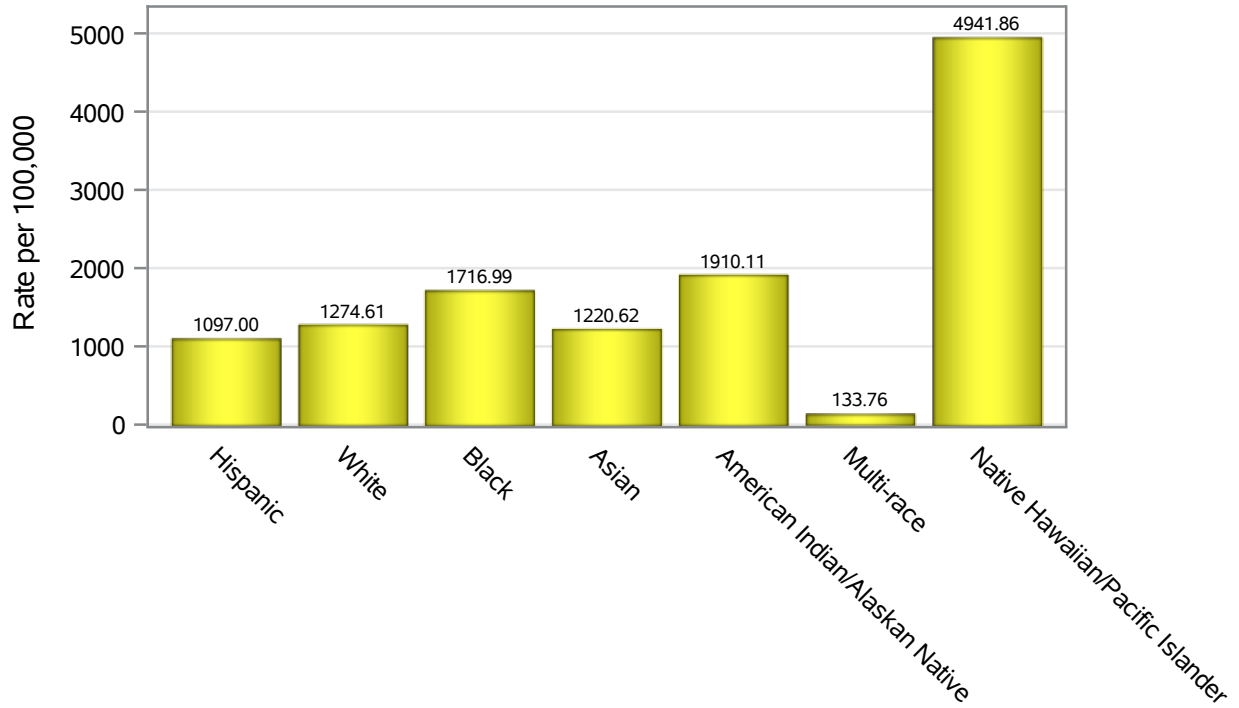


Investigations are ongoing; data are subject to change.

Reporting through 09JAN2023

North Las Vegas zip codes include 89030, 89031, 89032, 89033, 89036, 89081, 89084, 89085, 89086, 89087.

Hospitalization Race/Ethnicity Rates in North Las Vegas

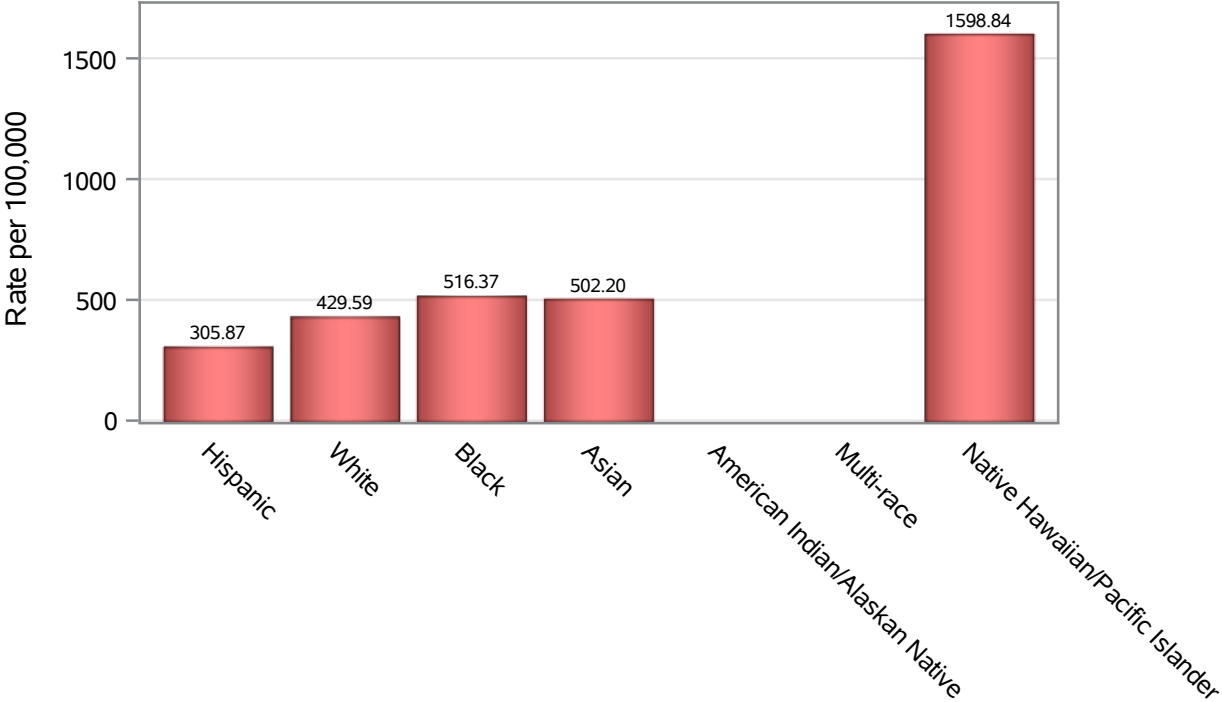


Investigations are ongoing; data are subject to change.

Reporting through 09JAN2023

North Las Vegas zip codes include 89030, 89031, 89032, 89033, 89036, 89081, 89084, 89085, 89086, 89087.

Death Race/Ethnicity Rates in North Las Vegas



Investigations are ongoing; data are subject to change.

Reporting through 09JAN2023

North Las Vegas zip codes include 89030, 89031, 89032, 89033, 89036, 89081, 89084, 89085, 89086, 89087.

Table 6: Race/Ethnicity and COVID19 in North Las Vegas

Case Status	Race Ethnicity Categories	N	%	Population	Rate per 100,000
Cases	Hispanic	26029	38.7	96,445	26988
	White	11457	17.1	63,549	18029
	Black	11350	16.9	47,059	24119
	Asian	3325	4.9	14,337	23192
	American Indian/Alaskan Native	203	0.3	890	22809
	Multi-race	218	0.3	9,719	2243.0
	Native Hawaiian/Pacific Islander	939	1.4	1,376	68241
	Unknown	13668	20.3	.	.
Hospitalizations	Hispanic	1058	34.0	96,445	1097.0
	White	810	26.1	63,549	1274.6
	Black	808	26.0	47,059	1717.0
	Asian	175	5.6	14,337	1220.6
	American Indian/Alaskan Native	17	0.5	890	1910.1
	Multi-race	13	0.4	9,719	133.76
	Native Hawaiian/Pacific Islander	68	2.2	1,376	4941.9
	Unknown	160	5.1	.	.
Deaths	Hispanic	295	32.1	96,445	305.87
	White	273	29.7	63,549	429.59
	Black	243	26.5	47,059	516.37
	Asian	72	7.8	14,337	502.20
	American Indian/Alaskan Native	6	0.7	890	.
	Multi-race	7	0.8	9,719	.
	Native Hawaiian/Pacific Islander	22	2.4	1,376	1598.8

Note1: Population data source for calculating rate estimates: U.S. Census Bureau, ACS 5-year estimate.

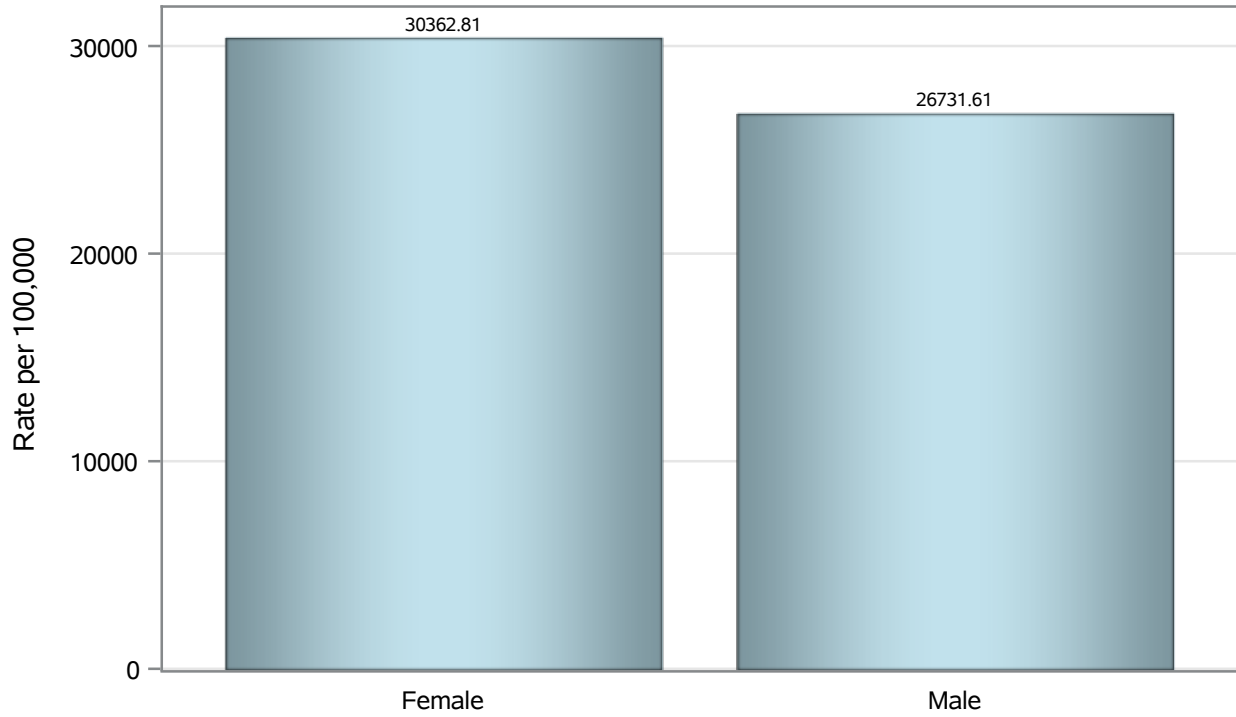
Note2: Rates for categories with fewer than 12 cases are suppressed due to high relative standard error.

Note3: Hospitalizations are regardless of deceased status; Deaths are regardless of hospitalization status

**Investigations are ongoing; data are subject to change.
Reporting through 09JAN2023**

North Las Vegas zip codes include 89030, 89031, 89032, 89033, 89036, 89081, 89084, 89085, 89086, 89087.

Case Birth Sex Rates in North Las Vegas

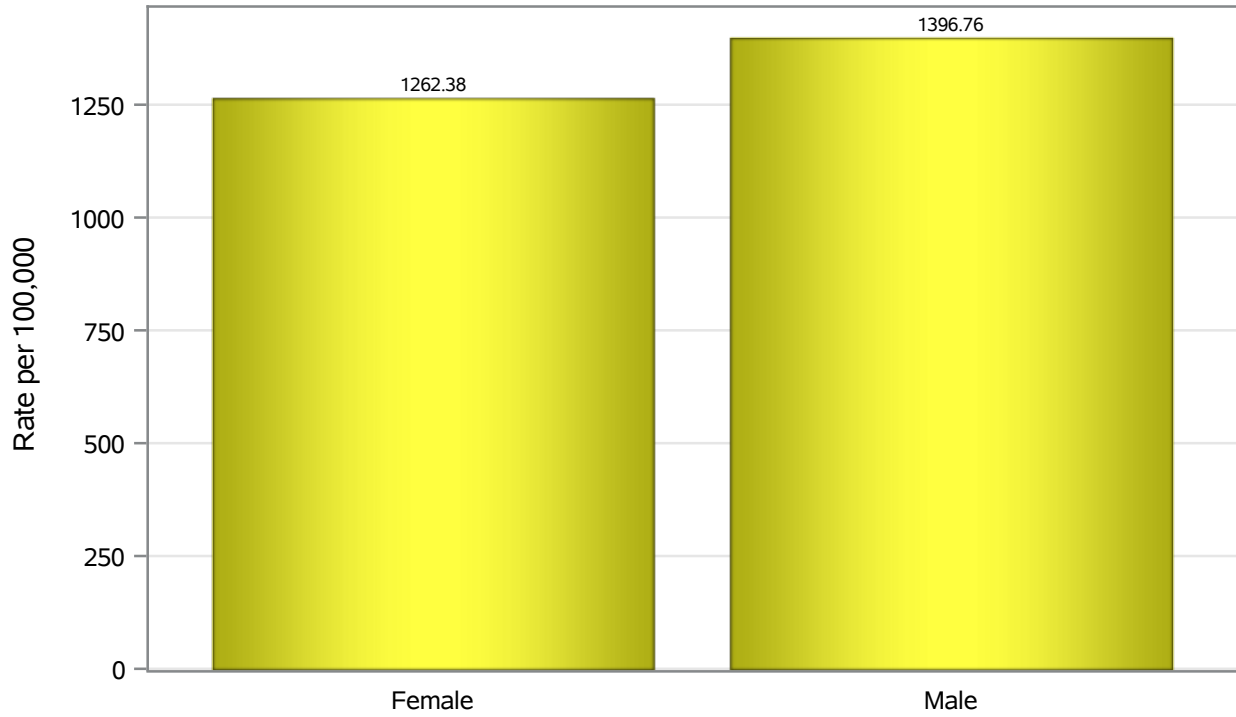


Investigations are ongoing; data are subject to change.

Reporting through 09JAN2023

North Las Vegas zip codes include 89030, 89031, 89032, 89033, 89036, 89081, 89084, 89085, 89086, 89087.

Hospitalization Birth Sex Rates in North Las Vegas

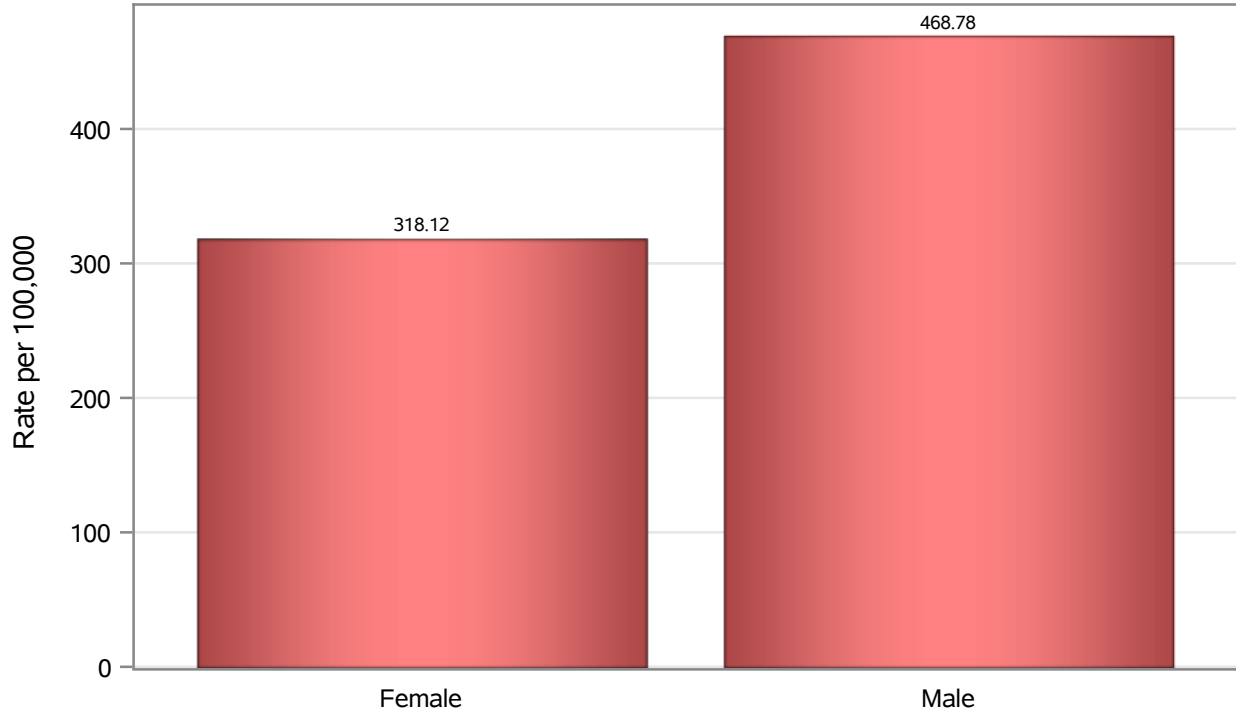


Investigations are ongoing; data are subject to change.

Reporting through 09JAN2023

North Las Vegas zip codes include 89030, 89031, 89032, 89033, 89036, 89081, 89084, 89085, 89086, 89087.

Death Birth Sex Rates in North Las Vegas



Investigations are ongoing; data are subject to change.

Reporting through 09JAN2023

North Las Vegas zip codes include 89030, 89031, 89032, 89033, 89036, 89081, 89084, 89085, 89086, 89087.

Table 7: Birth Sex and COVID19 in North Las Vegas

Case Status	Birth Sex Categories	N	%	Population	Rate per 100,000
Cases	Female	36078	53.7	118823	30363
	Male	30736	45.7	114980	26732
	Unknown	375	0.6	.	.
Hospitalizations	Female	1500	48.2	118823	1262.4
	Male	1606	51.7	114980	1396.8
	Unknown	3	0.1	.	.
Deaths	Female	378	41.2	118823	318.12
	Male	539	58.7	114980	468.78
	Unknown	1	0.1	.	.

Note1: Population data source for calculating rate estimates: U.S. Census Bureau, ACS 5-year estimate.

Note2: Rates for categories with fewer than 12 cases are suppressed due to high relative standard error.

Note3: Hospitalizations are regardless of deceased status; Deaths are regardless of hospitalization status

**Investigations are ongoing; data are subject to change.
Reporting through 09JAN2023**

North Las Vegas zip codes include 89030, 89031, 89032, 89033, 89036, 89081, 89084, 89085, 89086, 89087.