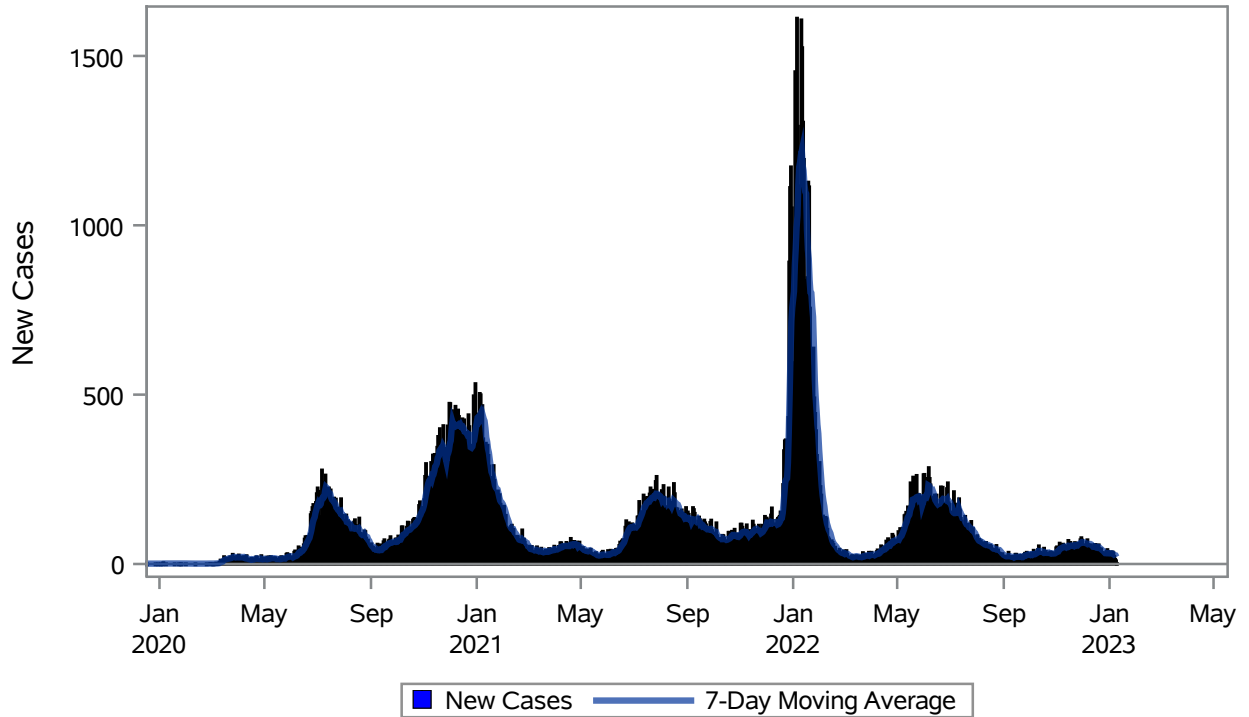


COVID19 Cases for Henderson, 7-Day Moving Average



Investigations are ongoing; data are subject to change.

Reporting through 09JAN2023

Henderson zip codes include 89002, 89011, 89012, 89014, 89015, 89044, 89052, 89074, 89119, 89120, 89122, 89123, 89124, 89183.

Table 1: New COVID19 Cases and 7-Day Moving Average in Henderson, Previous Two Weeks

Date (Daily)	New Cases	7-Day Moving Average
27DEC2022	27	32.00
28DEC2022	38	31.86
29DEC2022	43	31.57
30DEC2022	37	32.00
31DEC2022	24	32.29
01JAN2023	16	31.29
02JAN2023	36	31.57
03JAN2023	26	31.43
04JAN2023	36	31.14
05JAN2023	33	29.71
06JAN2023	23	27.71
07JAN2023	14	26.29

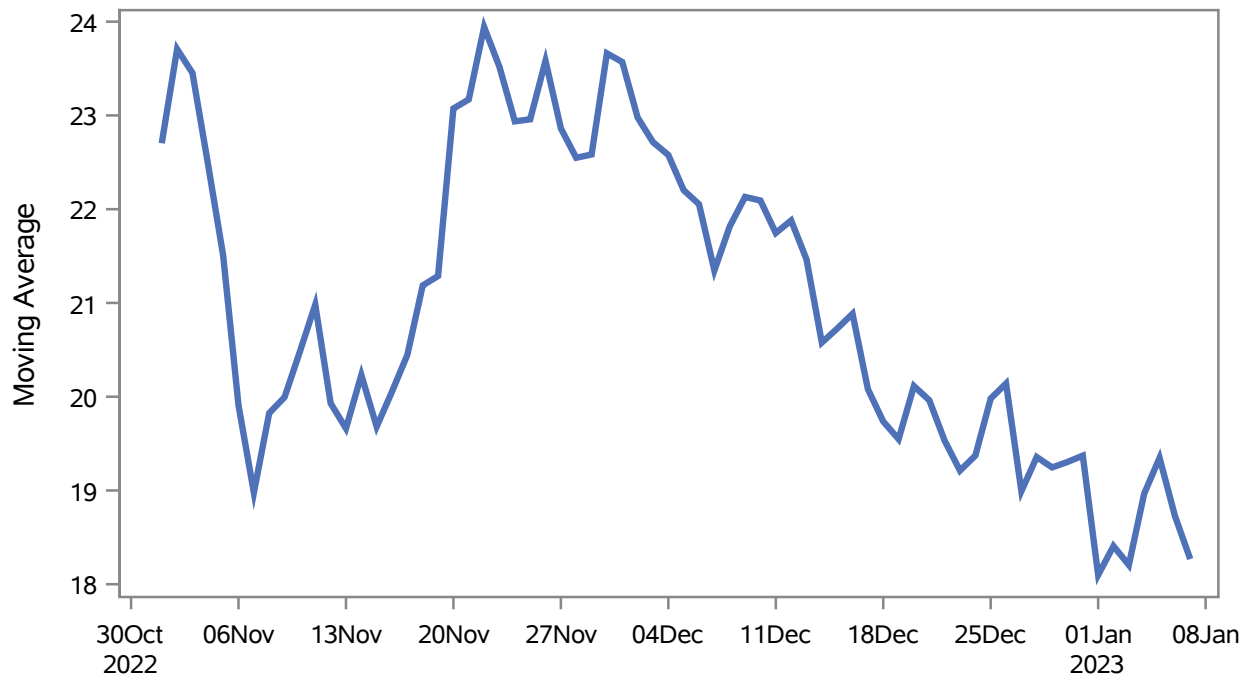
Note1: Event Date is calculated as follows based on completed information:
1) Disease onset date 2) Disease diagnosis date 3) Lab result collection date 4) Report date to SNHD.

Investigations are ongoing; data are subject to change.

Reporting through 09JAN2023

Henderson zip codes include 89002, 89011, 89012, 89014, 89015, 89044, 89052, 89074, 89119, 89120, 89122, 89123, 89124, 89183.

Percent of People Receiving COVID-19 Viral Tests Who Have Positive Results in Henderson



Investigations are ongoing; data are subject to change.

Reporting through 09JAN2023

Henderson zip codes include 89002, 89011, 89012, 89014, 89015, 89044, 89052, 89074, 89119, 89120, 89122, 89123, 89124, 89183.

Table 2: Percent of People Receiving COVID-19 Viral Tests Who Have Positive Results in Henderson

Collection Date	Positive	Negative	Equivocal	Total	% Positivity	7-Day Moving Average
24DEC2022	20	94		114	17.54	19.4
25DEC2022	21	70		91	23.08	20.0
26DEC2022	45	168		213	21.13	20.1
27DEC2022	39	193	1	233	16.74	19.0
28DEC2022	42	204		246	17.07	19.4
29DEC2022	46	203		249	18.47	19.2
30DEC2022	27	101		128	21.09	19.3
31DEC2022	20	91		111	18.02	19.4
01JAN2023	17	103		120	14.17	18.1
02JAN2023	51	168		219	23.29	18.4
03JAN2023	36	199		235	15.32	18.2
04JAN2023	41	142		183	22.40	19.0
05JAN2023	37	138		175	21.14	19.3
06JAN2023	27	134		161	16.77	18.7
07JAN2023	21	121		142	14.79	18.3

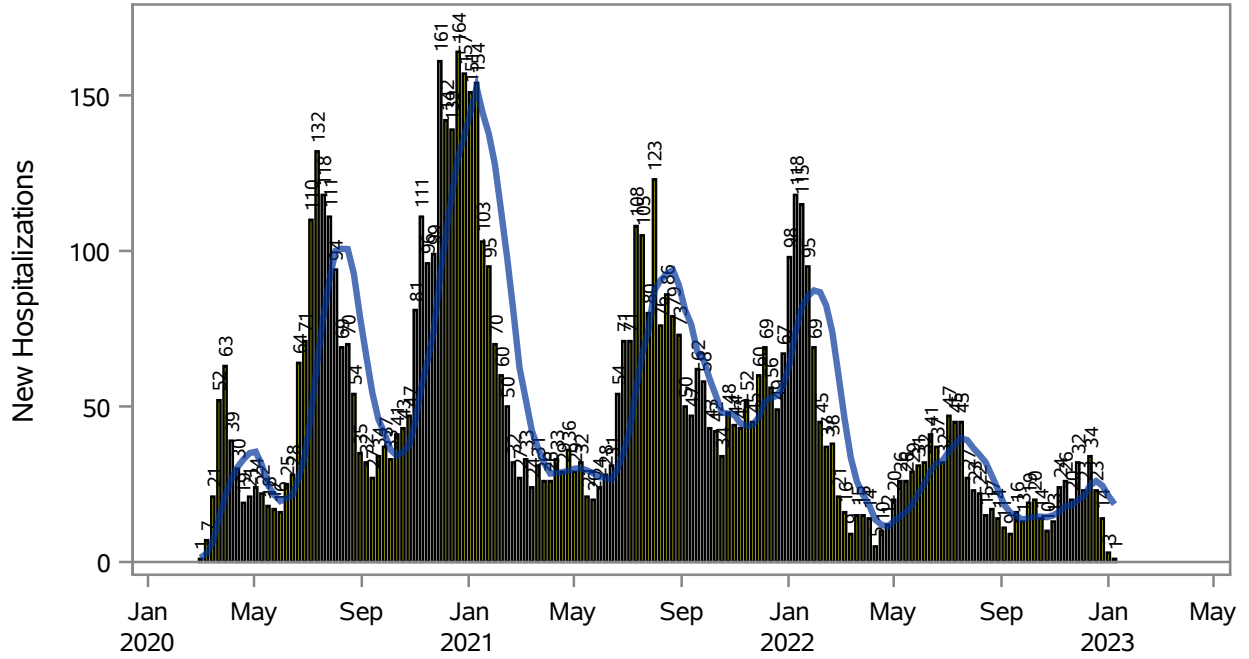
Note: Testing Data includes a 3 day delay

Investigations are ongoing; data are subject to change.

Reporting through 09JAN2023

Henderson zip codes include 89002, 89011, 89012, 89014, 89015, 89044, 89052, 89074, 89119, 89120, 89122, 89123, 89124, 89183.

COVID19 Hospitalizations for Henderson, 7-Day Moving Average



■ New Hospitalizations
 — 7-Day Moving Average

Investigations are ongoing; data are subject to change.

Reporting through 09JAN2023

Henderson zip codes include 89002, 89011, 89012, 89014, 89015, 89044, 89052, 89074, 89119, 89120, 89122, 89123, 89124, 89183.

Table 3: New COVID19-Related Hospitalizations and 7-Day Moving Average in Henderson, previous month

Week	Hospitalizations	7-Day Moving Average
11DEC2022	34	24.6
18DEC2022	23	26.0
25DEC2022	14	24.6
01JAN2023	3	21.3
08JAN2023	1	18.6

Note1: Admission Date is calculated as follows based on completed information:
A) COVID19 Case is hospitalized B) COVID19 Case has a hospital admission date.

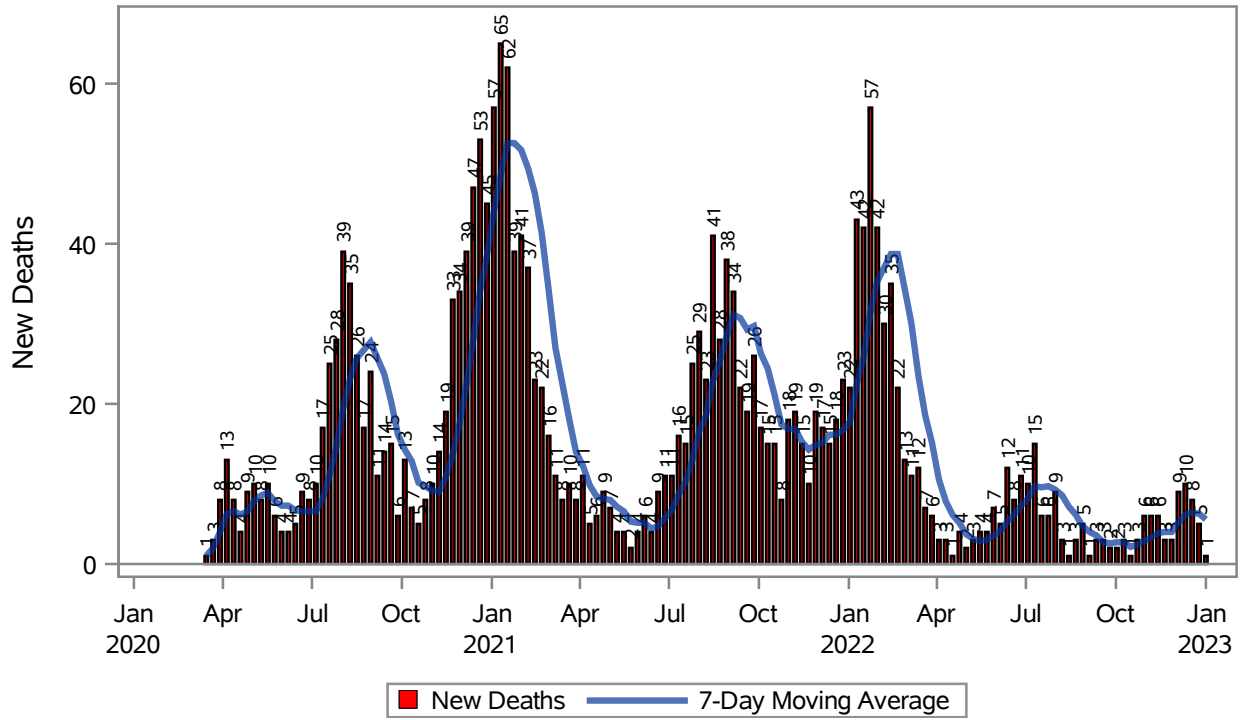
If admission date is missing, then the following is substituted temporarily, in order:
1) Disease onset date 2) Disease diagnosis date 3) Lab result collection date 4) Report date to SNHD.

Investigations are ongoing; data are subject to change.

Reporting through 09JAN2023

Henderson zip codes include 89002, 89011, 89012, 89014, 89015, 89044, 89052, 89074, 89119, 89120, 89122, 89123, 89124, 89183.

COVID19 Deaths for Henderson, 7-Day Moving Average



Investigations are ongoing; data are subject to change.

Reporting through 09JAN2023

Henderson zip codes include 89002, 89011, 89012, 89014, 89015, 89044, 89052, 89074, 89119, 89120, 89122, 89123, 89124, 89183.

Table 4: New COVID19-Related Deaths and 7-Day Moving Average in Henderson, Previous Month

Week	Deaths	7-Day Moving Average
11DEC2022	10	6.14
18DEC2022	8	6.43
25DEC2022	5	6.29
01JAN2023	1	5.57

Note1: Date of Death is calculated as follows based on completed information:
A) COVID19 Case is reported as deceased B) COVID19 Case has a reported date of death.

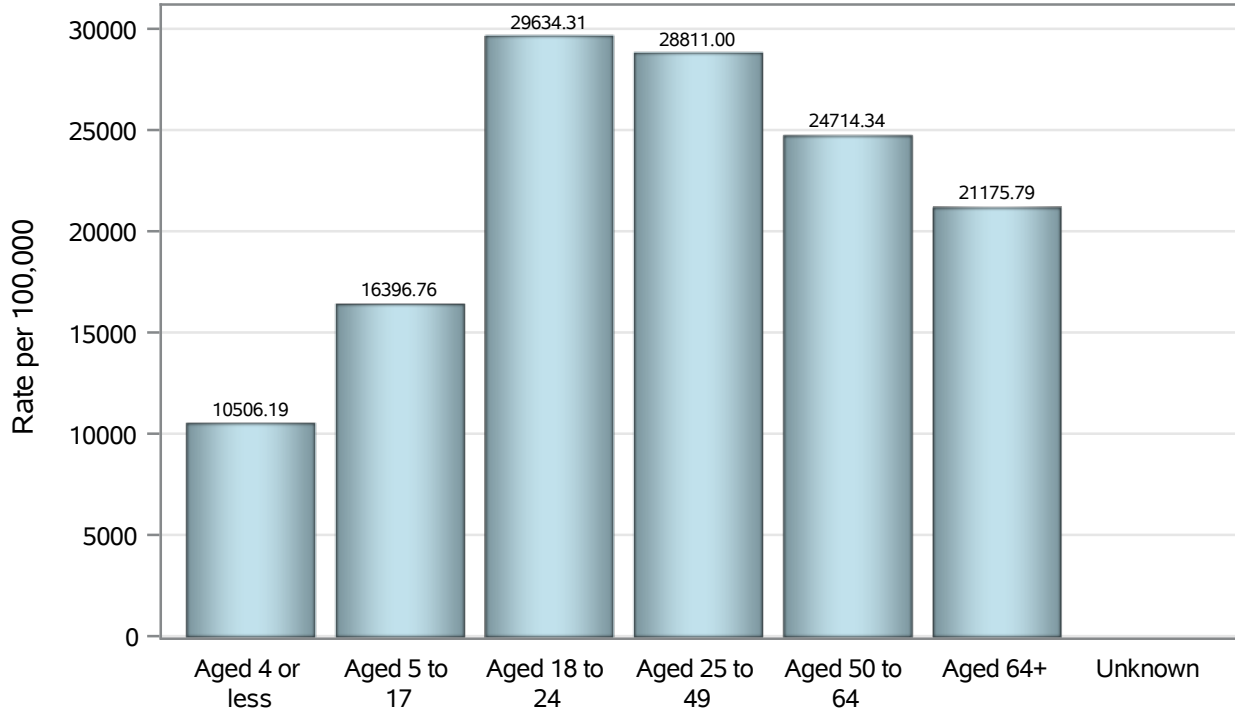
If date of death is missing, then the following is substituted temporarily, in order:
1) Disease onset date 2) Disease diagnosis date
3) Lab result collection date 4) Report date to SNHD.

Investigations are ongoing; data are subject to change.

Reporting through 09JAN2023

Henderson zip codes include 89002, 89011, 89012, 89014, 89015, 89044, 89052, 89074, 89119, 89120, 89122, 89123, 89124, 89183.

Case Age Rates in Henderson

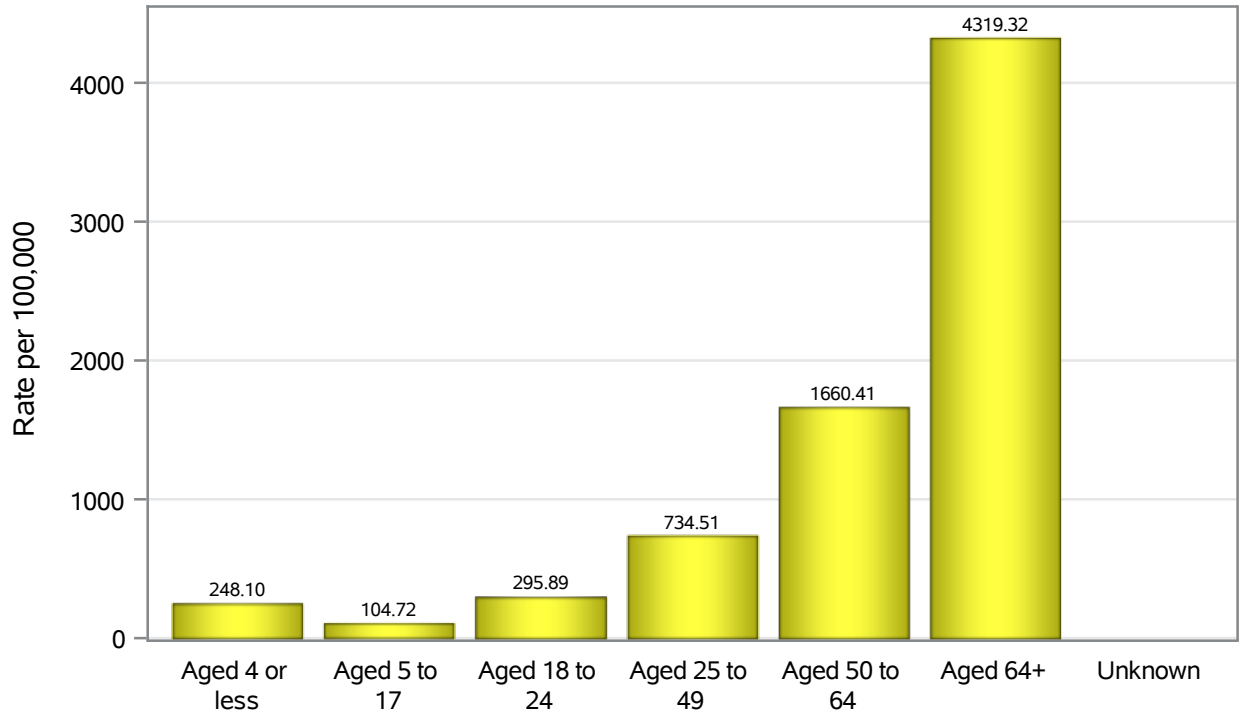


Investigations are ongoing; data are subject to change.

Reporting through 09JAN2023

Henderson zip codes include 89002, 89011, 89012, 89014, 89015, 89044, 89052, 89074, 89119, 89120, 89122, 89123, 89124, 89183.

Hospitalization Age Rates in Henderson

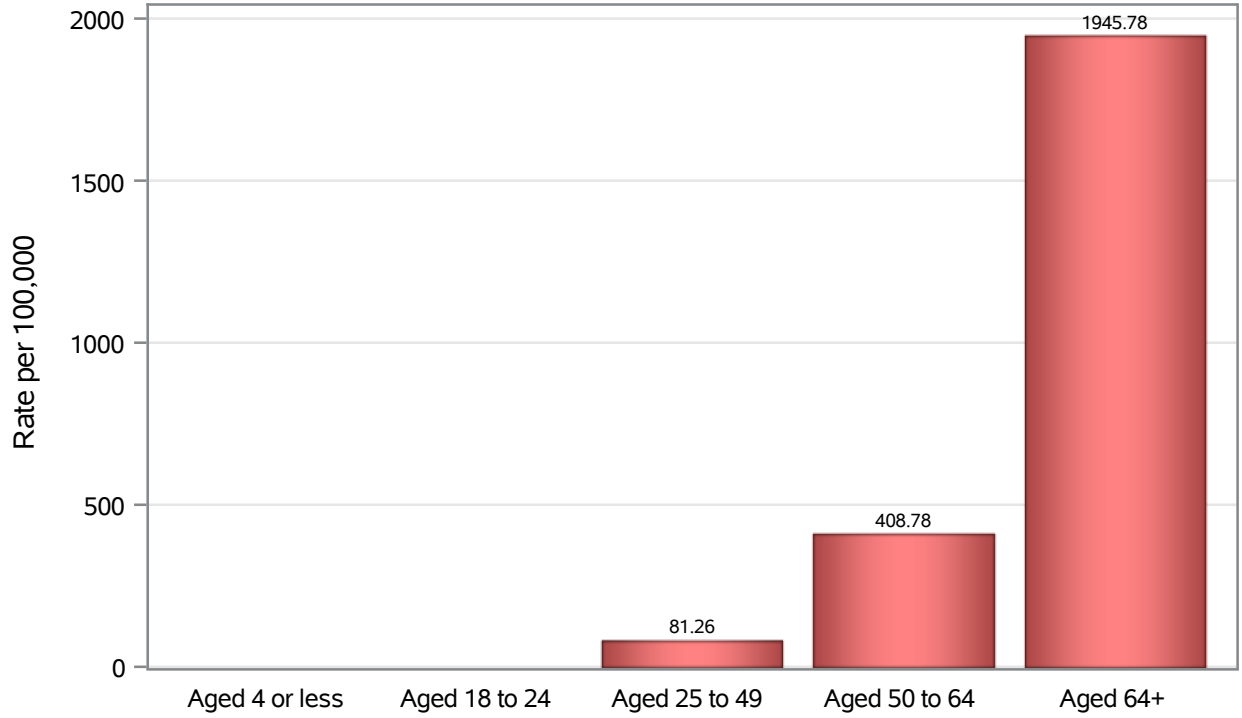


Investigations are ongoing; data are subject to change.

Reporting through 09JAN2023

Henderson zip codes include 89002, 89011, 89012, 89014, 89015, 89044, 89052, 89074, 89119, 89120, 89122, 89123, 89124, 89183.

Death Age Rates in Henderson



Investigations are ongoing; data are subject to change.

Reporting through 09JAN2023

Henderson zip codes include 89002, 89011, 89012, 89014, 89015, 89044, 89052, 89074, 89119, 89120, 89122, 89123, 89124, 89183.

Table 5: Age and COVID19 in Henderson

Case Status	Age Categories	N	%	Population	Rate per 100,000
Cases	Aged 4 or less	3049	2.4	29,021	10506
	Aged 5 to 17	13466	10.6	82,126	16397
	Aged 18 to 24	13120	10.3	44,273	29634
	Aged 25 to 49	53895	42.3	187064	28811
	Aged 50 to 64	25393	20.0	102746	24714
	Aged 64+	18316	14.4	86,495	21176
	Unknown	26	0.0	.	.
Hospitalizations	Aged 4 or less	72	1.0	29,021	248.10
	Aged 5 to 17	86	1.2	82,126	104.72
	Aged 18 to 24	131	1.8	44,273	295.89
	Aged 25 to 49	1374	19.3	187064	734.51
	Aged 50 to 64	1706	24.0	102746	1660.4
	Aged 64+	3736	52.6	86,495	4319.3
	Unknown	1	0.0	.	.
Deaths	Aged 4 or less	1	0.0	29,021	.
	Aged 18 to 24	4	0.2	44,273	.
	Aged 25 to 49	152	6.7	187064	81.26
	Aged 50 to 64	420	18.6	102746	408.78
	Aged 64+	1683	74.5	86,495	1945.8

Note1: Population data source for calculating rate estimates: U.S. Census Bureau, ACS 5-year estimate.

Note2: Rates for categories with fewer than 12 cases are suppressed due to high relative standard error.

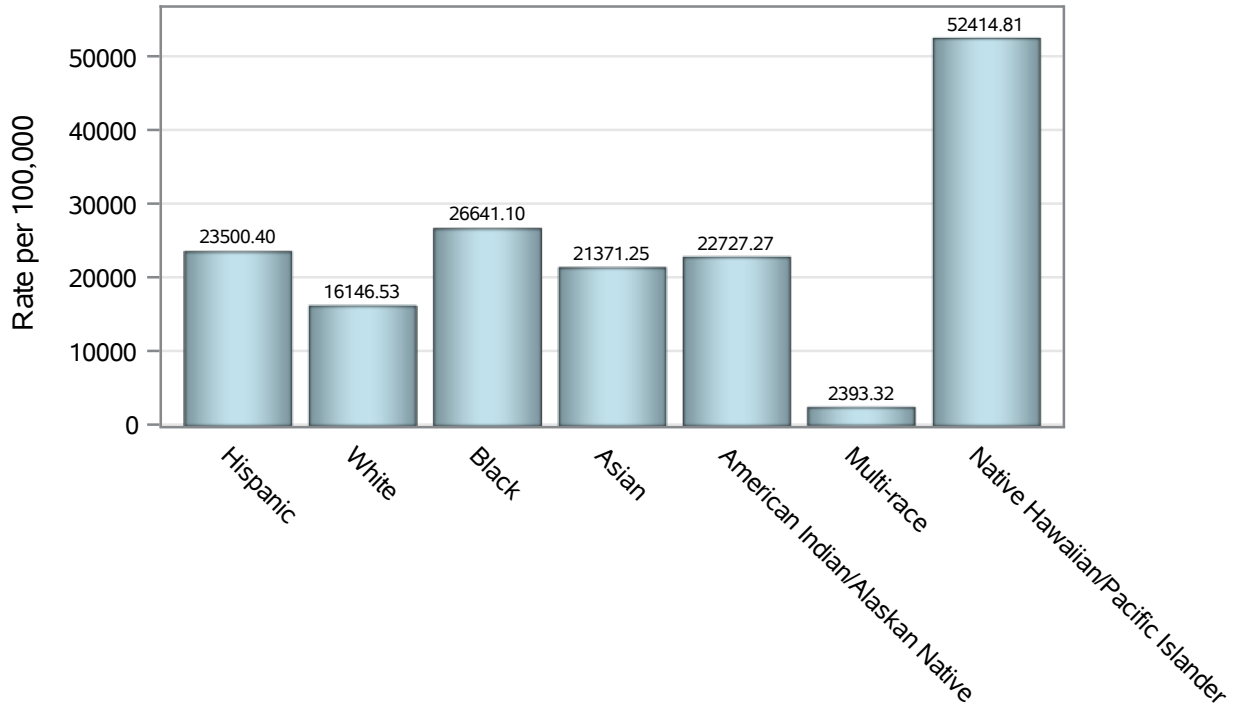
Note3: Hospitalizations are regardless of deceased status; Deaths are regardless of hospitalization status

Investigations are ongoing; data are subject to change.

Reporting through 09JAN2023

Henderson zip codes include 89002, 89011, 89012, 89014, 89015, 89044, 89052, 89074, 89119, 89120, 89122, 89123, 89124, 89183.

Case Race/Ethnicity Rates in Henderson

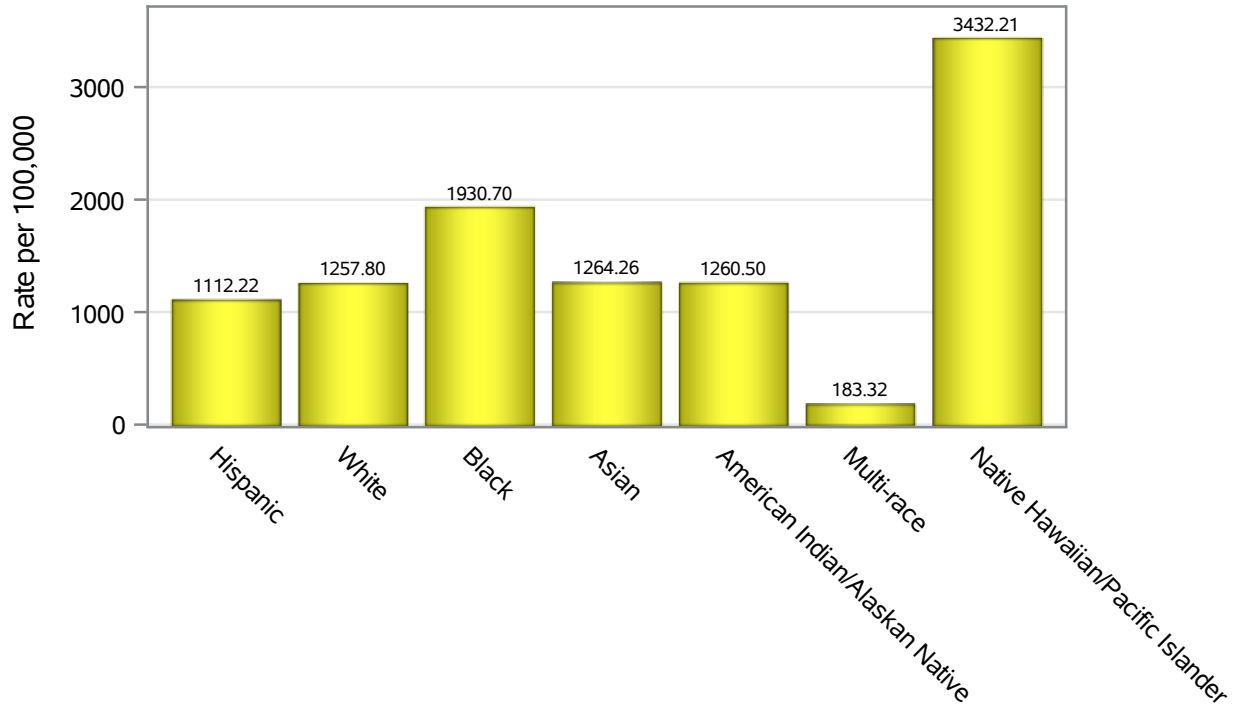


Investigations are ongoing; data are subject to change.

Reporting through 09JAN2023

Henderson zip codes include 89002, 89011, 89012, 89014, 89015, 89044, 89052, 89074, 89119, 89120, 89122, 89123, 89124, 89183.

Hospitalization Race/Ethnicity Rates in Henderson

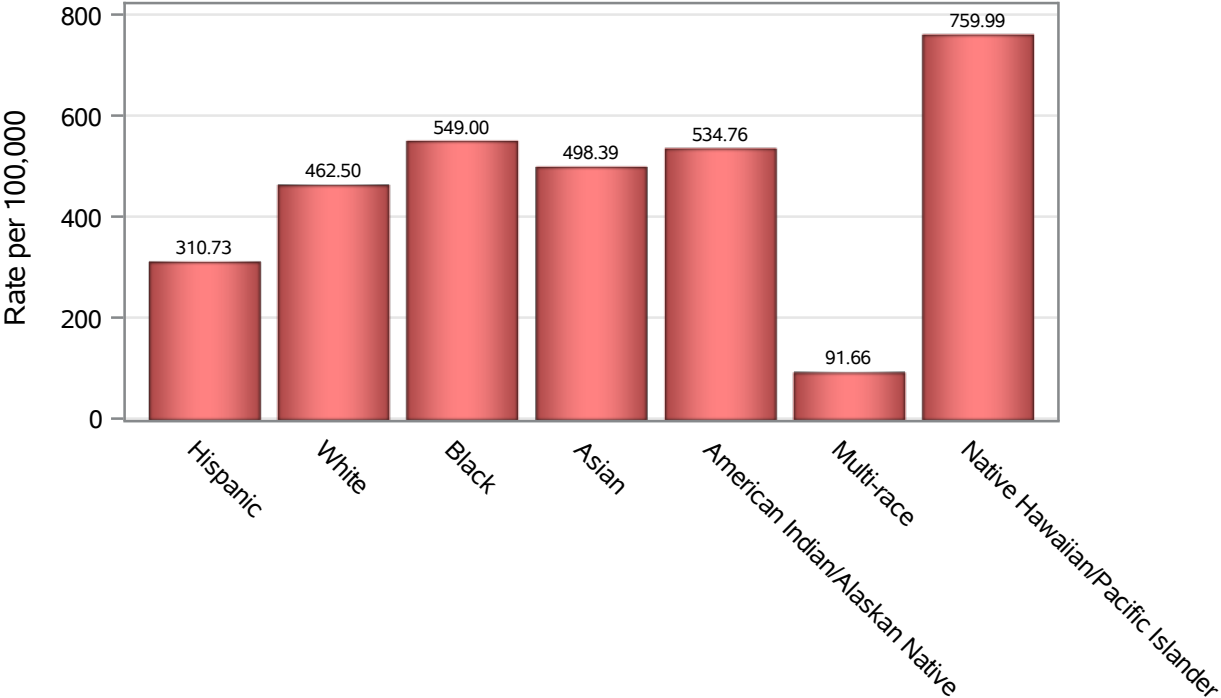


Investigations are ongoing; data are subject to change.

Reporting through 09JAN2023

Henderson zip codes include 89002, 89011, 89012, 89014, 89015, 89044, 89052, 89074, 89119, 89120, 89122, 89123, 89124, 89183.

Death Race/Ethnicity Rates in Henderson



Investigations are ongoing; data are subject to change.

Reporting through 09JAN2023

Henderson zip codes include 89002, 89011, 89012, 89014, 89015, 89044, 89052, 89074, 89119, 89120, 89122, 89123, 89124, 89183.

Table 6: Race/Ethnicity and COVID19 in Henderson

Case Status	Race Ethnicity Categories	N	%	Population	Rate per 100,000
Cases	Hispanic	28588	22.5	121649	23500
	White	47061	37.0	291462	16147
	Black	10142	8.0	38,069	26641
	Asian	11106	8.7	51,967	21371
	American Indian/Alaskan Native	595	0.5	2,618	22727
	Multi-race	470	0.4	19,638	2393.3
	Native Hawaiian/Pacific Islander	2138	1.7	4,079	52415
	Unknown	27165	21.3	.	.
Hospitalizations	Hispanic	1353	19.0	121649	1112.2
	White	3666	51.6	291462	1257.8
	Black	735	10.3	38,069	1930.7
	Asian	657	9.2	51,967	1264.3
	American Indian/Alaskan Native	33	0.5	2,618	1260.5
	Multi-race	36	0.5	19,638	183.32
	Native Hawaiian/Pacific Islander	140	2.0	4,079	3432.2
	Unknown	486	6.8	.	.
Deaths	Hispanic	378	16.7	121649	310.73
	White	1348	59.6	291462	462.50
	Black	209	9.2	38,069	549.00
	Asian	259	11.5	51,967	498.39
	American Indian/Alaskan Native	14	0.6	2,618	534.76
	Multi-race	18	0.8	19,638	91.66
	Native Hawaiian/Pacific Islander	31	1.4	4,079	759.99
	Unknown	3	0.1	.	.

Note1: Population data source for calculating rate estimates: U.S. Census Bureau, ACS 5-year estimate.

Note2: Rates for categories with fewer than 12 cases are suppressed due to high relative standard error.

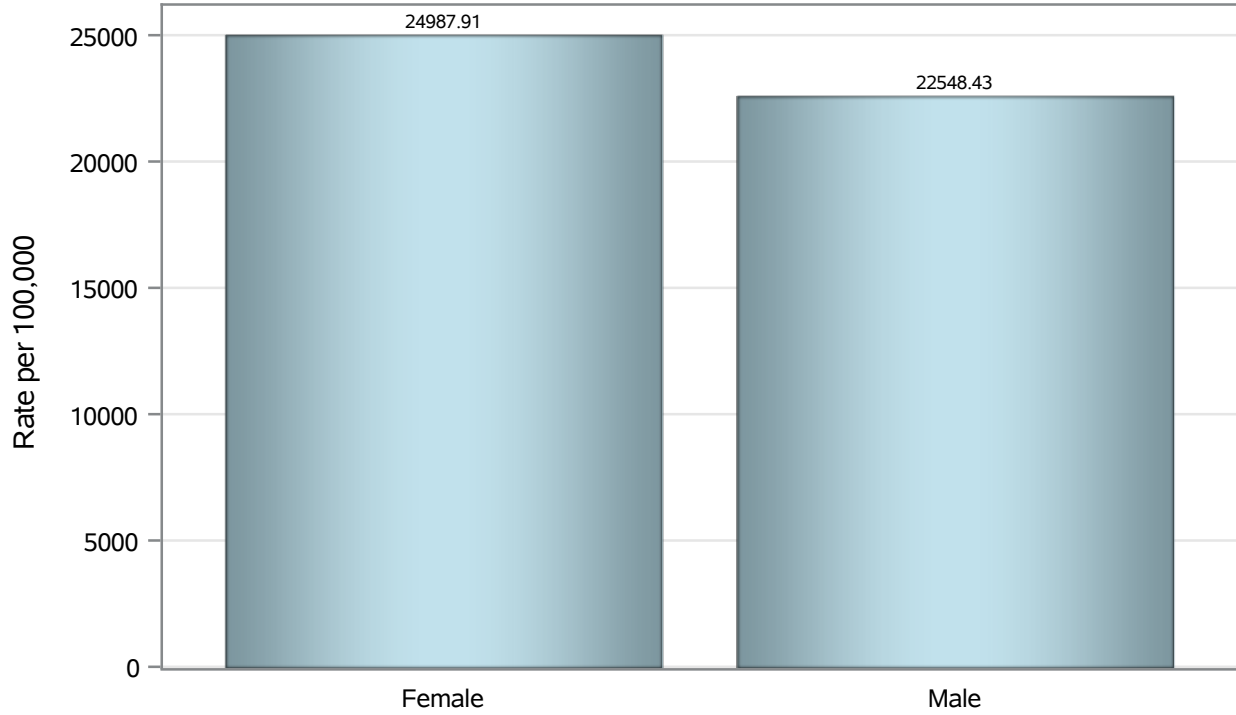
Note3: Hospitalizations are regardless of deceased status; Deaths are regardless of hospitalization status

Investigations are ongoing; data are subject to change.

Reporting through 09JAN2023

Henderson zip codes include 89002, 89011, 89012, 89014, 89015, 89044, 89052, 89074, 89119, 89120, 89122, 89123, 89124, 89183.

Case Birth Sex Rates in Henderson

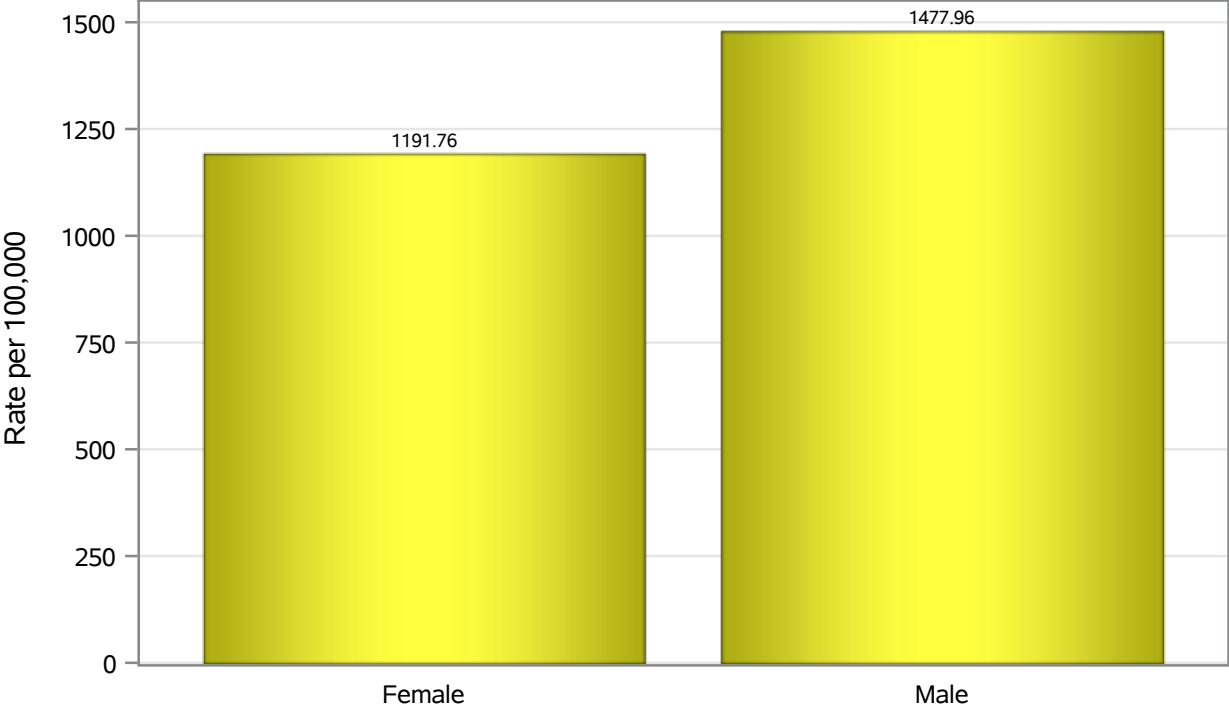


Investigations are ongoing; data are subject to change.

Reporting through 09JAN2023

Henderson zip codes include 89002, 89011, 89012, 89014, 89015, 89044, 89052, 89074, 89119, 89120, 89122, 89123, 89124, 89183.

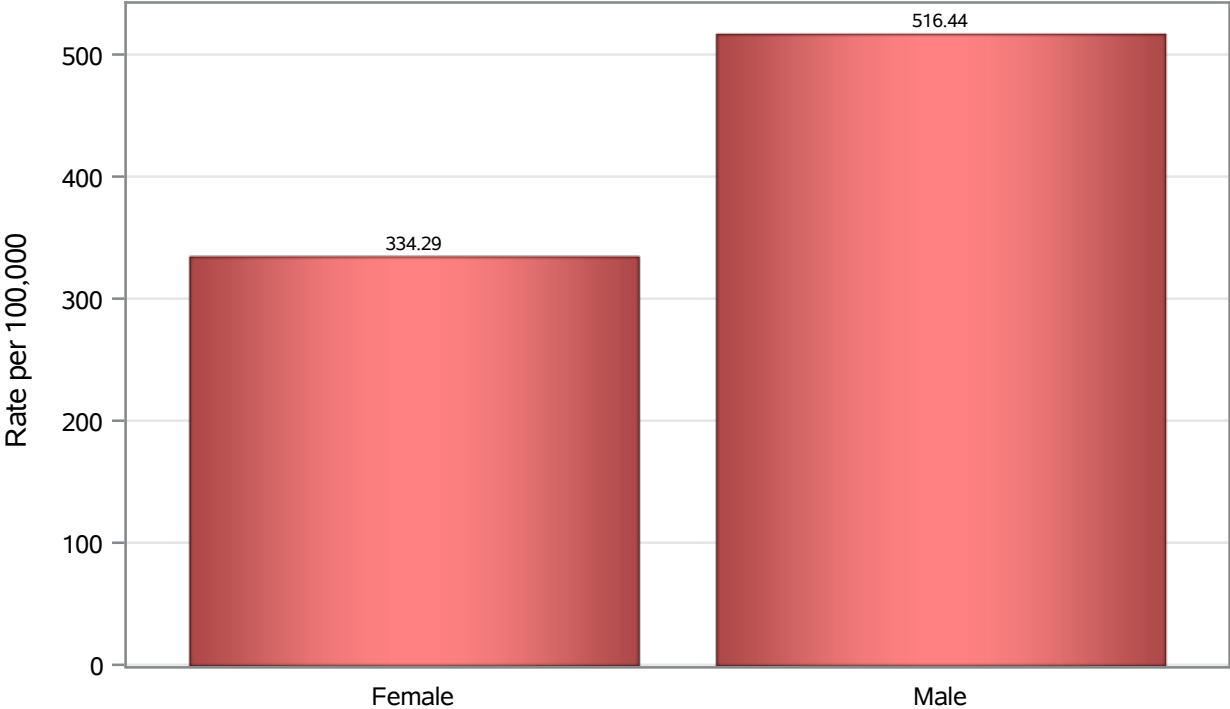
Hospitalization Birth Sex Rates in Henderson



Investigations are ongoing; data are subject to change.
Reporting through 09JAN2023

Henderson zip codes include 89002, 89011, 89012, 89014, 89015, 89044, 89052, 89074, 89119, 89120, 89122, 89123, 89124, 89183.

Death Birth Sex Rates in Henderson



Investigations are ongoing; data are subject to change.
Reporting through 09JAN2023

Henderson zip codes include 89002, 89011, 89012, 89014, 89015, 89044, 89052, 89074,
89119, 89120, 89122, 89123, 89124, 89183.

Table 7: Birth Sex and COVID19 in Henderson

Case Status	Birth Sex Categories	N	%	Population	Rate per 100,000
Cases	Female	66676	52.4	266833	24988
	Male	59729	46.9	264892	22548
	Unknown	860	0.7	.	.
Hospitalizations	Female	3180	44.8	266833	1191.8
	Male	3915	55.1	264892	1478.0
	Unknown	11	0.2	.	.
Deaths	Female	892	39.5	266833	334.29
	Male	1368	60.5	264892	516.44

Note1: Population data source for calculating rate estimates: U.S. Census Bureau, ACS 5-year estimate.

Note2: Rates for categories with fewer than 12 cases are suppressed due to high relative standard error.

Note3: Hospitalizations are regardless of deceased status; Deaths are regardless of hospitalization status

Investigations are ongoing; data are subject to change.

Reporting through 09JAN2023

Henderson zip codes include 89002, 89011, 89012, 89014, 89015, 89044, 89052, 89074, 89119, 89120, 89122, 89123, 89124, 89183.