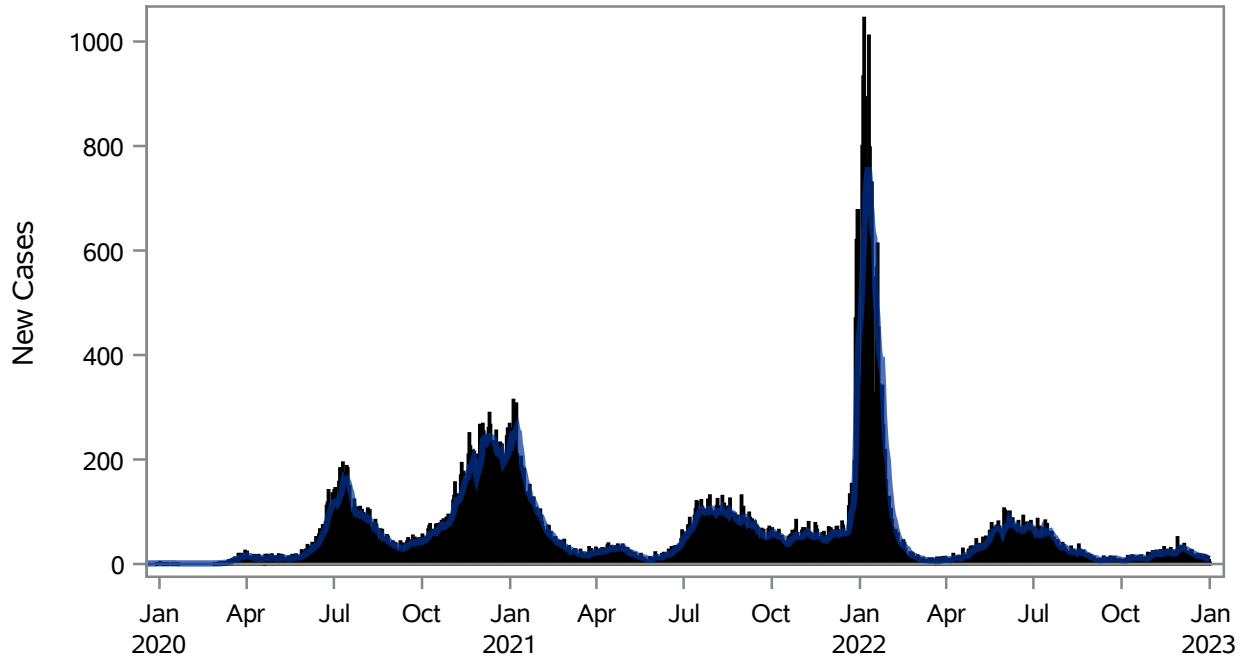


COVID19 Cases for North Las Vegas, 7-Day Moving Average



■ New Cases — 7-Day Moving Average

Investigations are ongoing; data are subject to change.

Reporting through 02JAN2023

North Las Vegas zip codes include 89030, 89031, 89032, 89033, 89036, 89081, 89084, 89085, 89086, 89087.

Table 1: New COVID19 Cases and 7-Day Moving Average in North Las Vegas, Previous Two Weeks

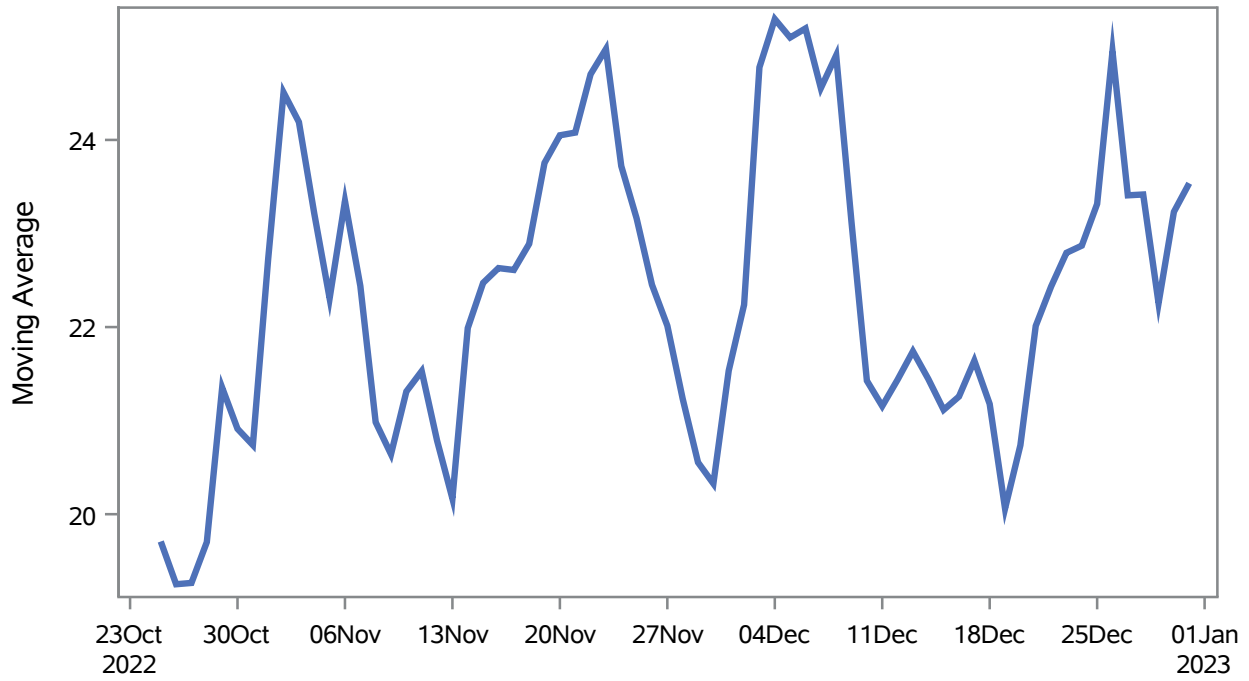
Date (Daily)	New Cases	7-Day Moving Average
20DEC2022	17	15.00
21DEC2022	15	15.00
22DEC2022	18	15.14
23DEC2022	13	15.29
24DEC2022	9	14.57
25DEC2022	6	13.86
26DEC2022	17	13.57
27DEC2022	10	12.57
28DEC2022	15	12.57
29DEC2022	6	10.86
30DEC2022	13	10.86
31DEC2022	7	10.57

Note1: Event Date is calculated as follows based on completed information:
1) Disease onset date 2) Disease diagnosis date 3) Lab result collection date 4) Report date to SNHD.

**Investigations are ongoing; data are subject to change.
Reporting through 02JAN2023**

North Las Vegas zip codes include 89030, 89031, 89032, 89033, 89036, 89081, 89084, 89085, 89086, 89087.

Percent of People Receiving COVID-19 Viral Tests Who Have Positive Results in North Las Vegas



Investigations are ongoing; data are subject to change.

Reporting through 02JAN2023

North Las Vegas zip codes include 89030, 89031, 89032, 89033, 89036, 89081, 89084, 89085, 89086, 89087.

Table 2: Percent of People Receiving COVID-19 Viral Tests Who Have Positive Results in North Las Vegas

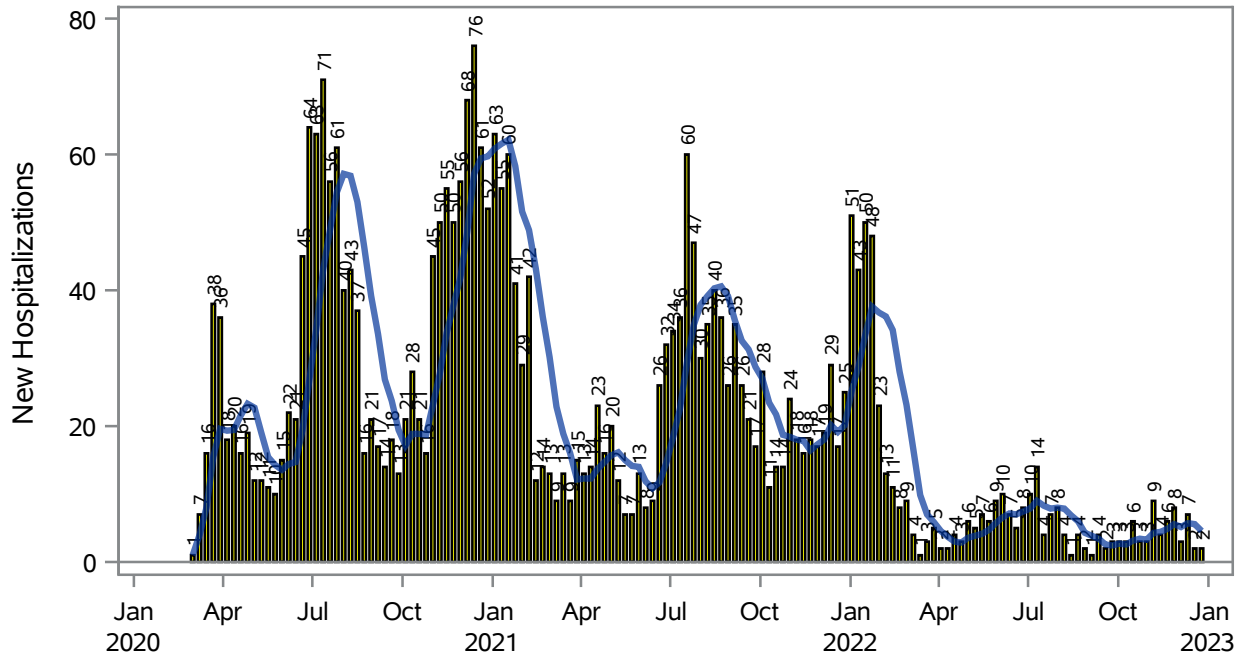
Collection Date	Positive	Negative	Equivocal	Total	% Positivity	7-Day Moving Average
17DEC2022	27	74		101	26.73	21.6
18DEC2022	20	78		98	20.41	21.2
19DEC2022	41	219	1	261	15.71	20.1
20DEC2022	35	105		140	25.00	20.7
21DEC2022	35	103		138	25.36	22.0
22DEC2022	42	113	1	156	26.92	22.4
23DEC2022	20	83		103	19.42	22.8
24DEC2022	18	48		66	27.27	22.9
25DEC2022	12	38	1	51	23.53	23.3
26DEC2022	32	86		118	27.12	24.9
27DEC2022	38	229		267	14.23	23.4
28DEC2022	30	88		118	25.42	23.4
29DEC2022	28	121		149	18.79	22.3
30DEC2022	21	59		80	26.25	23.2
31DEC2022	25	60		85	29.41	23.5

Note: Testing Data includes a 3 day delay

**Investigations are ongoing; data are subject to change.
Reporting through 02JAN2023**

North Las Vegas zip codes include 89030, 89031, 89032, 89033, 89036, 89081, 89084, 89085, 89086, 89087.

COVID19 Hospitalizations for North Las Vegas, 7-Day Moving Average



■ New Hospitalizations
 — 7-Day Moving Average

Investigations are ongoing; data are subject to change.

Reporting through 02JAN2023

North Las Vegas zip codes include 89030, 89031, 89032, 89033, 89036, 89081, 89084, 89085, 89086, 89087.

Table 3: New COVID19-Related Hospitalizations and 7-Day Moving Average in North Las Vegas, previous month

Week	Hospitalizations	7-Day Moving Average
04DEC2022	3	5.14
11DEC2022	7	5.71
18DEC2022	2	5.57
25DEC2022	2	4.57

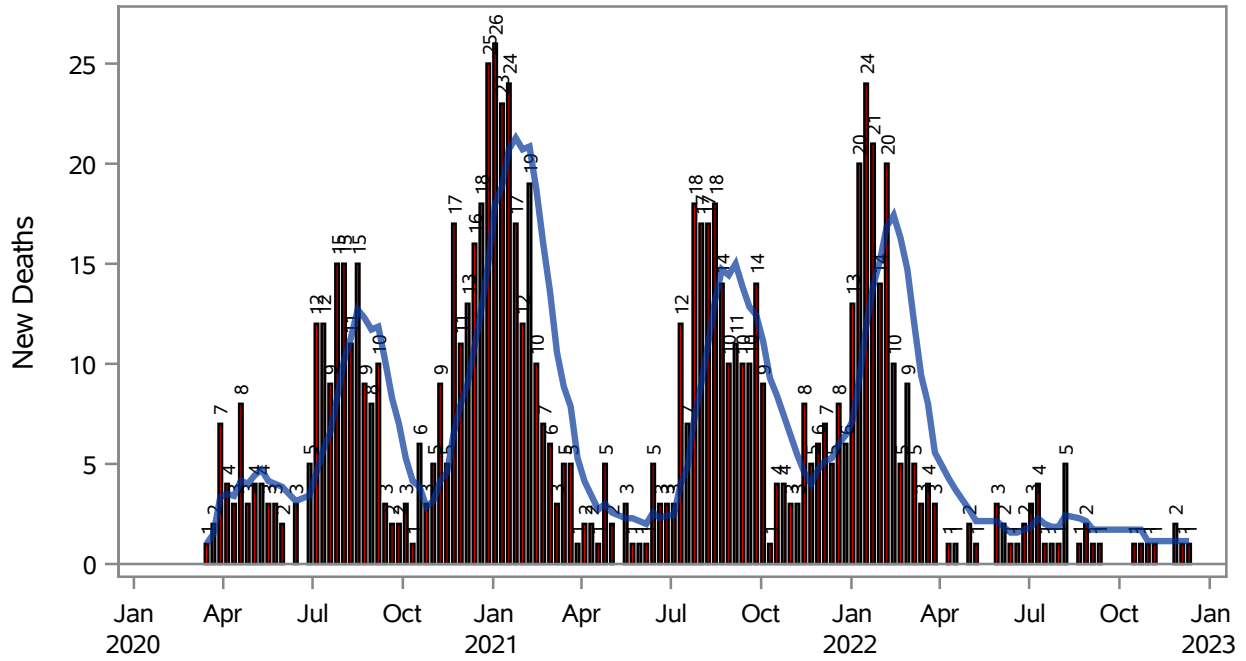
Note1: Admission Date is calculated as follows based on completed information:
A) COVID19 Case is hospitalized B) COVID19 Case has a hospital admission date.

If admission date is missing, then the following is substituted temporarily, in order:
1) Disease onset date 2) Disease diagnosis date 3) Lab result collection date 4) Report date to SNHD.

**Investigations are ongoing; data are subject to change.
Reporting through 02JAN2023**

North Las Vegas zip codes include 89030, 89031, 89032, 89033, 89036, 89081, 89084, 89085, 89086, 89087.

COVID19 Deaths for North Las Vegas, 7-Day Moving Average



■ New Deaths — 7-Day Moving Average

Investigations are ongoing; data are subject to change.

Reporting through 02JAN2023

North Las Vegas zip codes include 89030, 89031, 89032, 89033, 89036, 89081, 89084, 89085, 89086, 89087.

Table 4: New COVID19-Related Deaths and 7-Day Moving Average in North Las Vegas, Previous Month

Week	Deaths	7-Day Moving Average
04DEC2022	1	1.14
11DEC2022	1	1.14

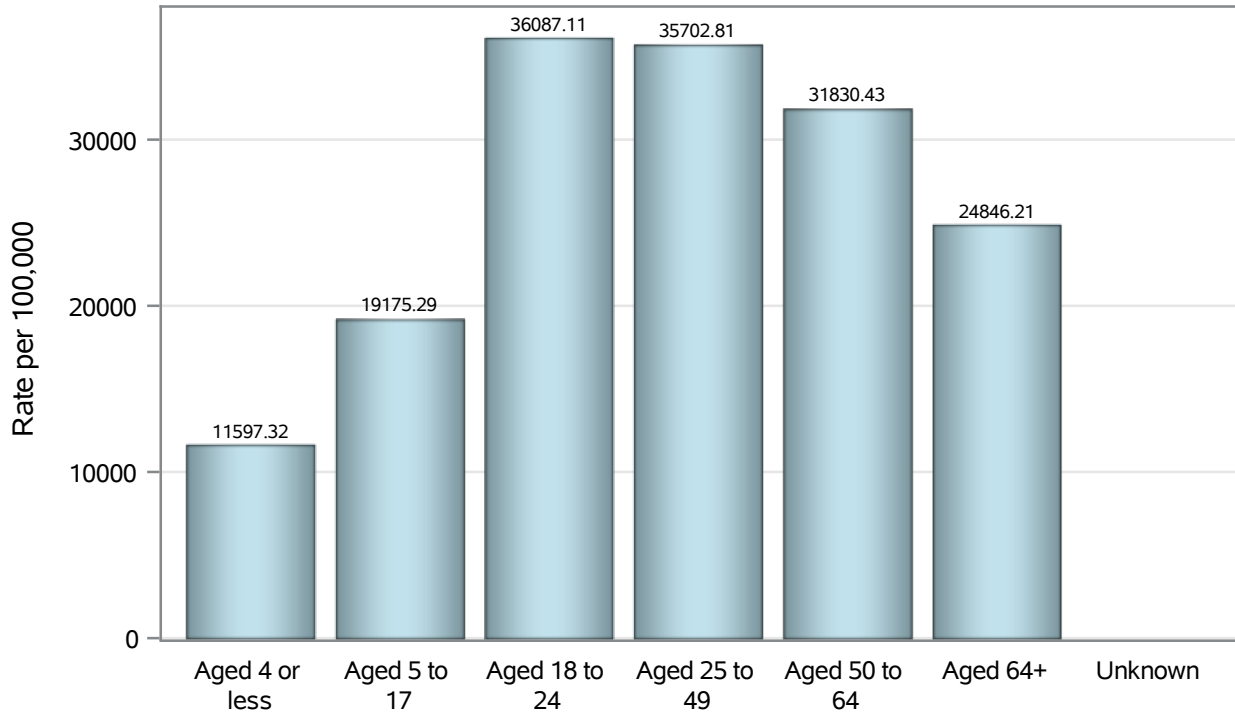
Note1: Date of Death is calculated as follows based on completed information:
A) COVID19 Case is reported as deceased B) COVID19 Case has a reported date of death.

If date of death is missing, then the following is substituted temporarily, in order:
1) Disease onset date 2) Disease diagnosis date
3) Lab result collection date 4) Report date to SNHD.

**Investigations are ongoing; data are subject to change.
Reporting through 02JAN2023**

North Las Vegas zip codes include 89030, 89031, 89032, 89033, 89036, 89081, 89084, 89085, 89086, 89087.

Case Age Rates in North Las Vegas

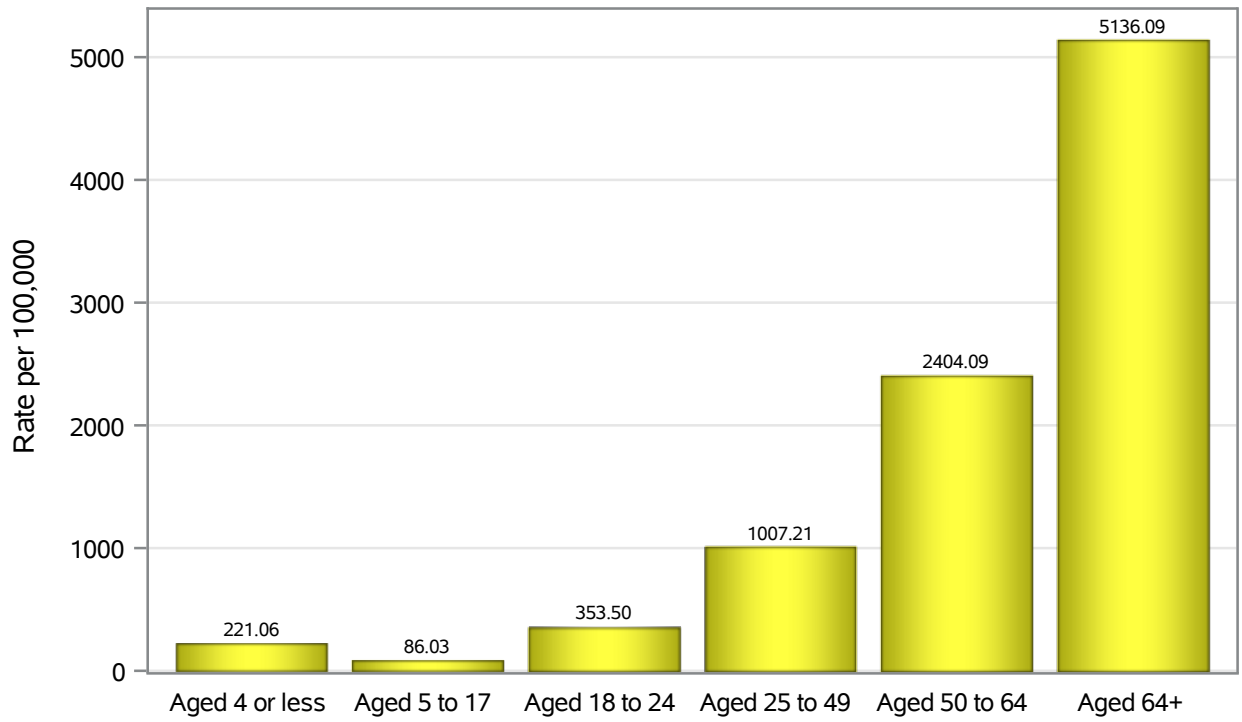


Investigations are ongoing; data are subject to change.

Reporting through 02JAN2023

North Las Vegas zip codes include 89030, 89031, 89032, 89033, 89036, 89081, 89084, 89085, 89086, 89087.

Hospitalization Age Rates in North Las Vegas

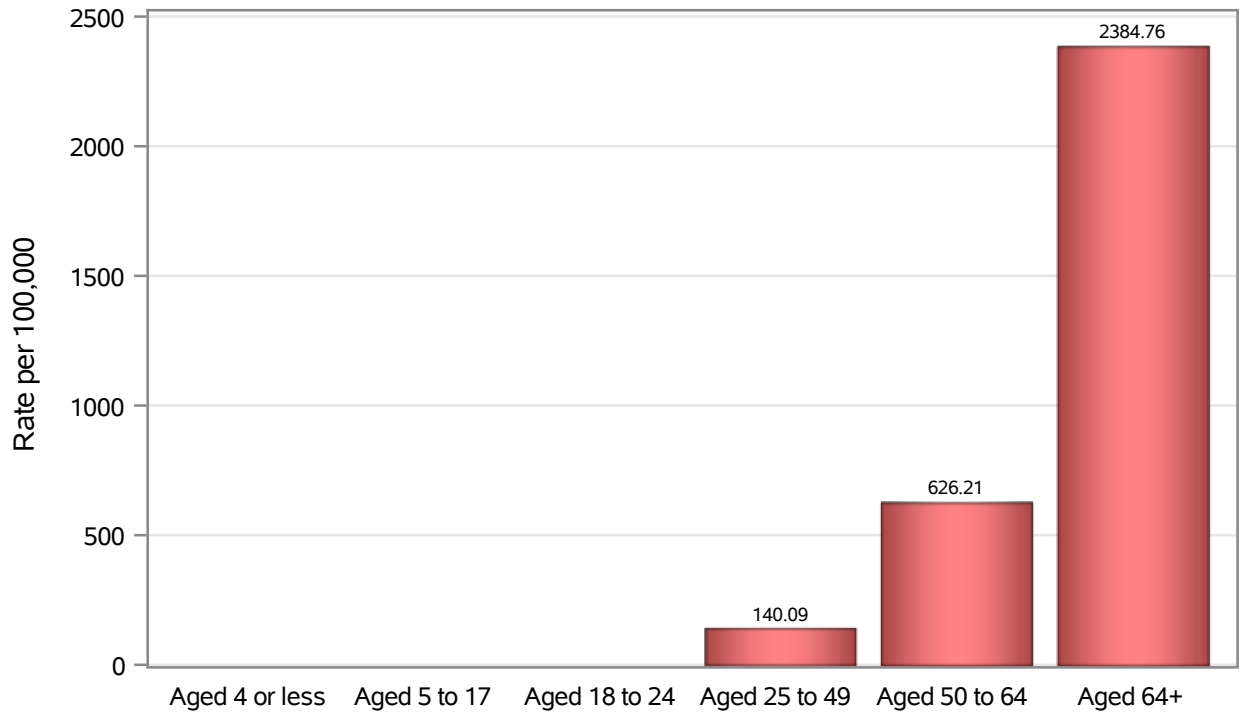


Investigations are ongoing; data are subject to change.

Reporting through 02JAN2023

North Las Vegas zip codes include 89030, 89031, 89032, 89033, 89036, 89081, 89084, 89085, 89086, 89087.

Death Age Rates in North Las Vegas



Investigations are ongoing; data are subject to change.

Reporting through 02JAN2023

North Las Vegas zip codes include 89030, 89031, 89032, 89033, 89036, 89081, 89084, 89085, 89086, 89087.

Table 5: Age and COVID19 in North Las Vegas

Case Status	Age Categories	N	%	Population	Rate per 100,000
Cases	Aged 4 or less	2046	3.1	17,642	11597
	Aged 5 to 17	9584	14.3	49,981	19175
	Aged 18 to 24	8269	12.3	22,914	36087
	Aged 25 to 49	29563	44.1	82,803	35703
	Aged 50 to 64	11691	17.4	36,729	31830
	Aged 64+	5897	8.8	23,734	24846
	Unknown	14	0.0	.	.
Hospitalizations	Aged 4 or less	39	1.3	17,642	221.06
	Aged 5 to 17	43	1.4	49,981	86.03
	Aged 18 to 24	81	2.6	22,914	353.50
	Aged 25 to 49	834	26.9	82,803	1007.2
	Aged 50 to 64	883	28.5	36,729	2404.1
	Aged 64+	1219	39.3	23,734	5136.1
	Deaths	Aged 4 or less	2	0.2	17,642
Aged 5 to 17		1	0.1	49,981	.
Aged 18 to 24		2	0.2	22,914	.
Aged 25 to 49		116	12.6	82,803	140.09
Aged 50 to 64		230	25.1	36,729	626.21
Aged 64+		566	61.7	23,734	2384.8

Note1: Population data source for calculating rate estimates: U.S. Census Bureau, ACS 5-year estimate.

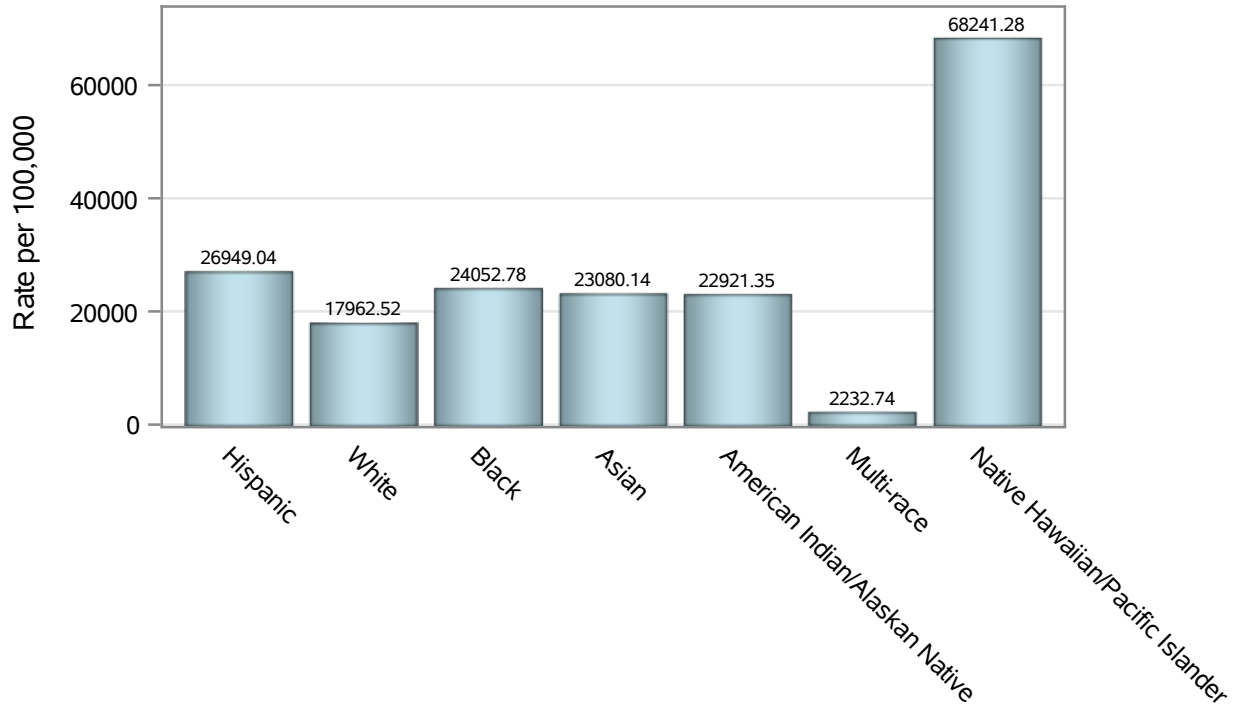
Note2: Rates for categories with fewer than 12 cases are suppressed due to high relative standard error.

Note3: Hospitalizations are regardless of deceased status; Deaths are regardless of hospitalization status

**Investigations are ongoing; data are subject to change.
Reporting through 02JAN2023**

North Las Vegas zip codes include 89030, 89031, 89032, 89033, 89036, 89081, 89084, 89085, 89086, 89087.

Case Race/Ethnicity Rates in North Las Vegas

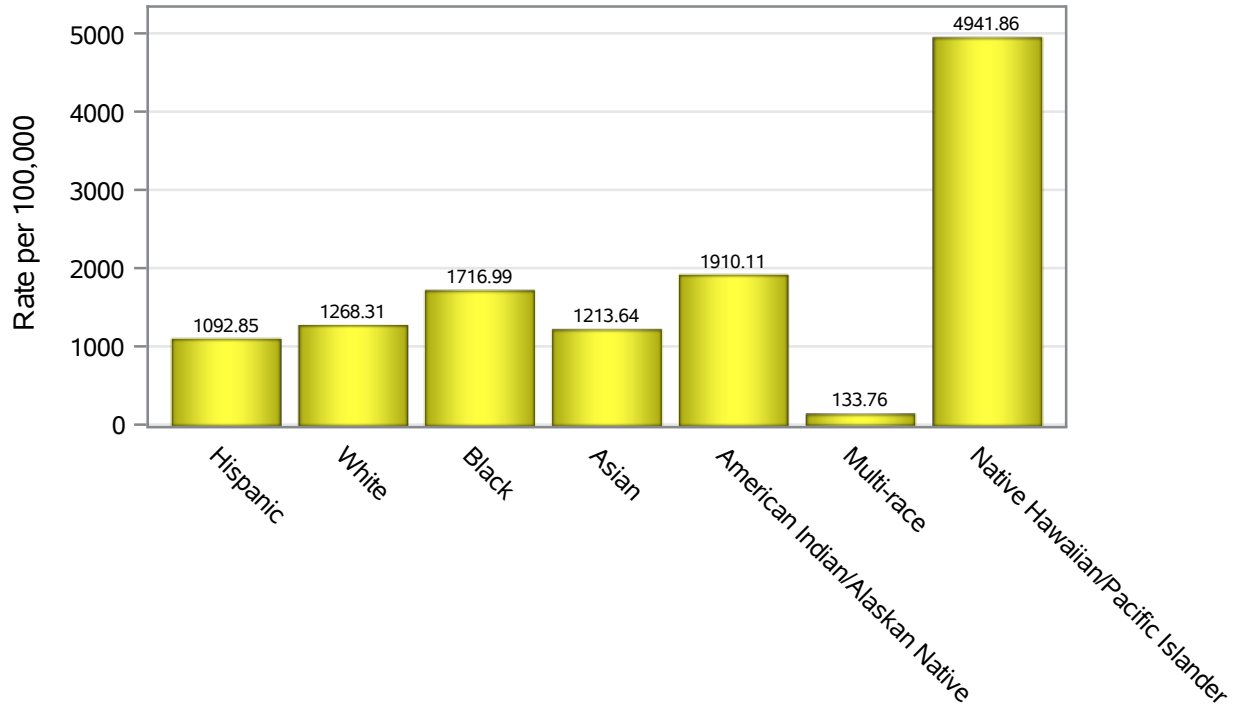


Investigations are ongoing; data are subject to change.

Reporting through 02JAN2023

North Las Vegas zip codes include 89030, 89031, 89032, 89033, 89036, 89081, 89084, 89085, 89086, 89087.

Hospitalization Race/Ethnicity Rates in North Las Vegas

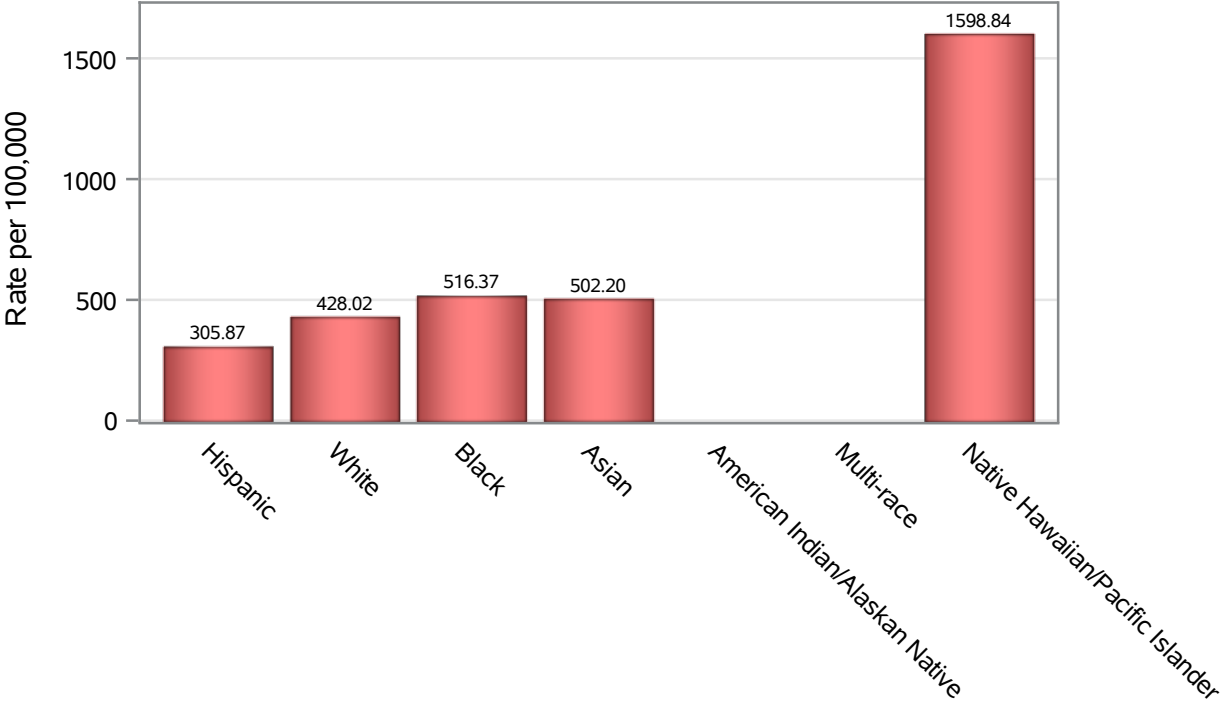


Investigations are ongoing; data are subject to change.

Reporting through 02JAN2023

North Las Vegas zip codes include 89030, 89031, 89032, 89033, 89036, 89081, 89084, 89085, 89086, 89087.

Death Race/Ethnicity Rates in North Las Vegas



Investigations are ongoing; data are subject to change.

Reporting through 02JAN2023

North Las Vegas zip codes include 89030, 89031, 89032, 89033, 89036, 89081, 89084, 89085, 89086, 89087.

Table 6: Race/Ethnicity and COVID19 in North Las Vegas

Case Status	Race Ethnicity Categories	N	%	Population	Rate per 100,000
Cases	Hispanic	25991	38.8	96,445	26949
	White	11415	17.0	63,549	17963
	Black	11319	16.9	47,059	24053
	Asian	3309	4.9	14,337	23080
	American Indian/Alaskan Native	204	0.3	890	22921
	Multi-race	217	0.3	9,719	2232.7
	Native Hawaiian/Pacific Islander	939	1.4	1,376	68241
	Unknown	13670	20.4	.	.
Hospitalizations	Hispanic	1054	34.0	96,445	1092.9
	White	806	26.0	63,549	1268.3
	Black	808	26.1	47,059	1717.0
	Asian	174	5.6	14,337	1213.6
	American Indian/Alaskan Native	17	0.5	890	1910.1
	Multi-race	13	0.4	9,719	133.76
	Native Hawaiian/Pacific Islander	68	2.2	1,376	4941.9
	Unknown	159	5.1	.	.
Deaths	Hispanic	295	32.2	96,445	305.87
	White	272	29.7	63,549	428.02
	Black	243	26.5	47,059	516.37
	Asian	72	7.9	14,337	502.20
	American Indian/Alaskan Native	6	0.7	890	.
	Multi-race	7	0.8	9,719	.
	Native Hawaiian/Pacific Islander	22	2.4	1,376	1598.8

Note1: Population data source for calculating rate estimates: U.S. Census Bureau, ACS 5-year estimate.

Note2: Rates for categories with fewer than 12 cases are suppressed due to high relative standard error.

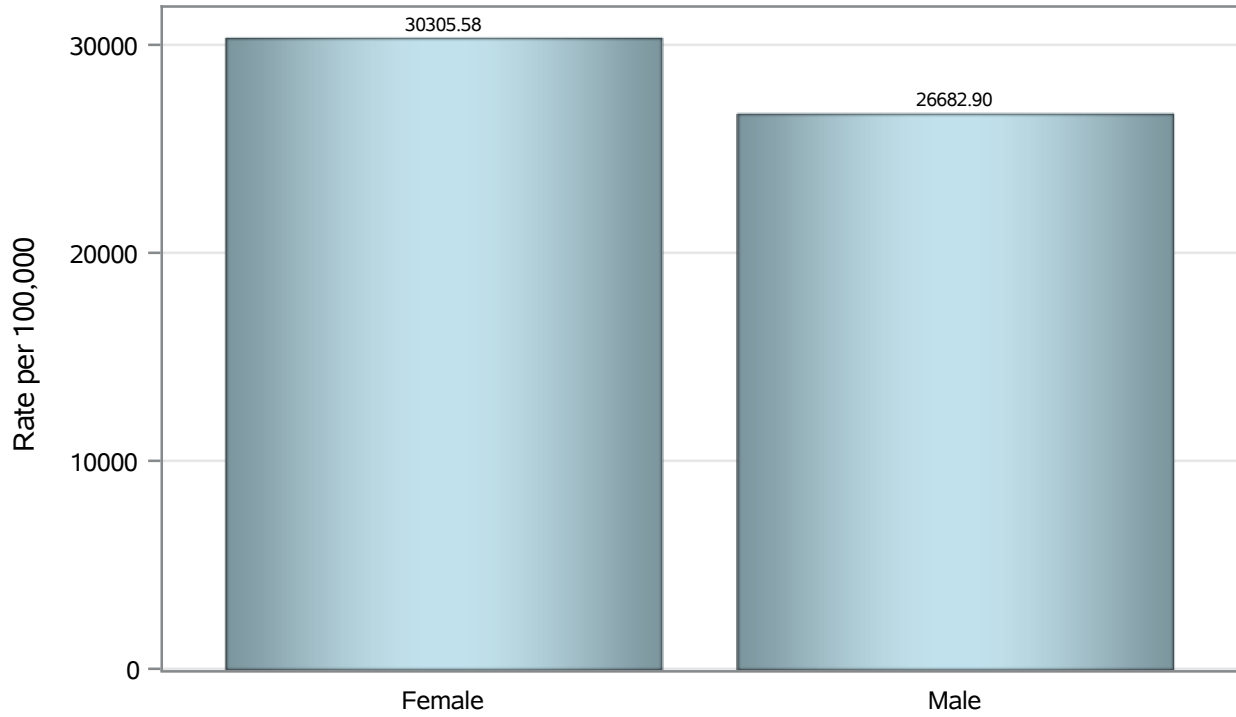
Note3: Hospitalizations are regardless of deceased status; Deaths are regardless of hospitalization status

Investigations are ongoing; data are subject to change.

Reporting through 02JAN2023

North Las Vegas zip codes include 89030, 89031, 89032, 89033, 89036, 89081, 89084, 89085, 89086, 89087.

Case Birth Sex Rates in North Las Vegas

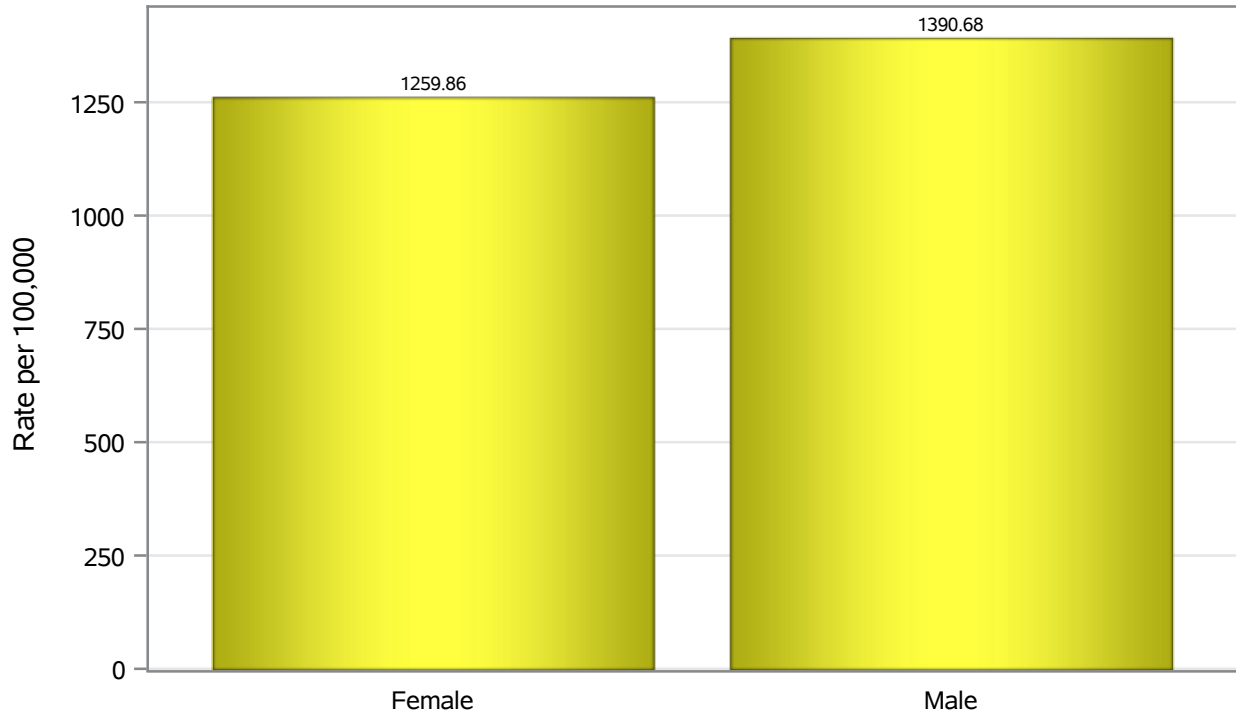


Investigations are ongoing; data are subject to change.

Reporting through 02JAN2023

North Las Vegas zip codes include 89030, 89031, 89032, 89033, 89036, 89081, 89084, 89085, 89086, 89087.

Hospitalization Birth Sex Rates in North Las Vegas

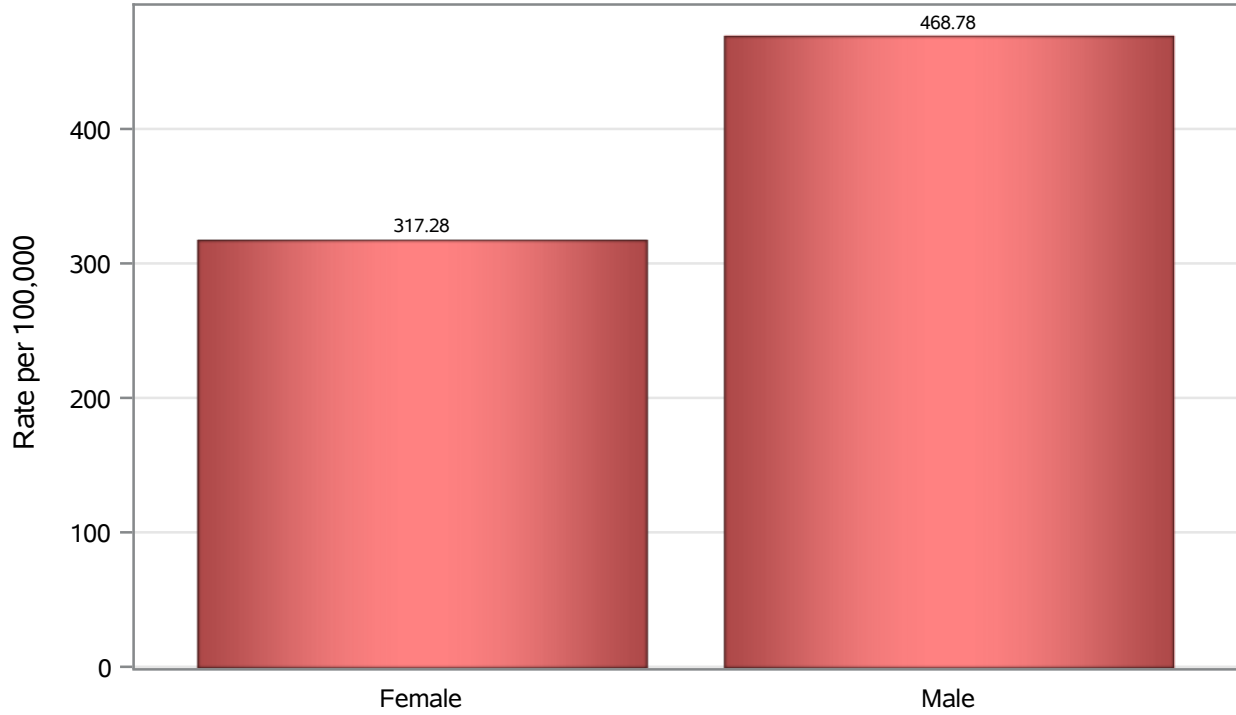


Investigations are ongoing; data are subject to change.

Reporting through 02JAN2023

North Las Vegas zip codes include 89030, 89031, 89032, 89033, 89036, 89081, 89084, 89085, 89086, 89087.

Death Birth Sex Rates in North Las Vegas



Investigations are ongoing; data are subject to change.

Reporting through 02JAN2023

North Las Vegas zip codes include 89030, 89031, 89032, 89033, 89036, 89081, 89084, 89085, 89086, 89087.

Table 7: Birth Sex and COVID19 in North Las Vegas

Case Status	Birth Sex Categories	N	%	Population	Rate per 100,000
Cases	Female	36010	53.7	118823	30306
	Male	30680	45.7	114980	26683
	Unknown	374	0.6	.	.
Hospitalizations	Female	1497	48.3	118823	1259.9
	Male	1599	51.6	114980	1390.7
	Unknown	3	0.1	.	.
Deaths	Female	377	41.1	118823	317.28
	Male	539	58.8	114980	468.78
	Unknown	1	0.1	.	.

Note1: Population data source for calculating rate estimates: U.S. Census Bureau, ACS 5-year estimate.

Note2: Rates for categories with fewer than 12 cases are suppressed due to high relative standard error.

Note3: Hospitalizations are regardless of deceased status; Deaths are regardless of hospitalization status

**Investigations are ongoing; data are subject to change.
Reporting through 02JAN2023**

North Las Vegas zip codes include 89030, 89031, 89032, 89033, 89036, 89081, 89084, 89085, 89086, 89087.