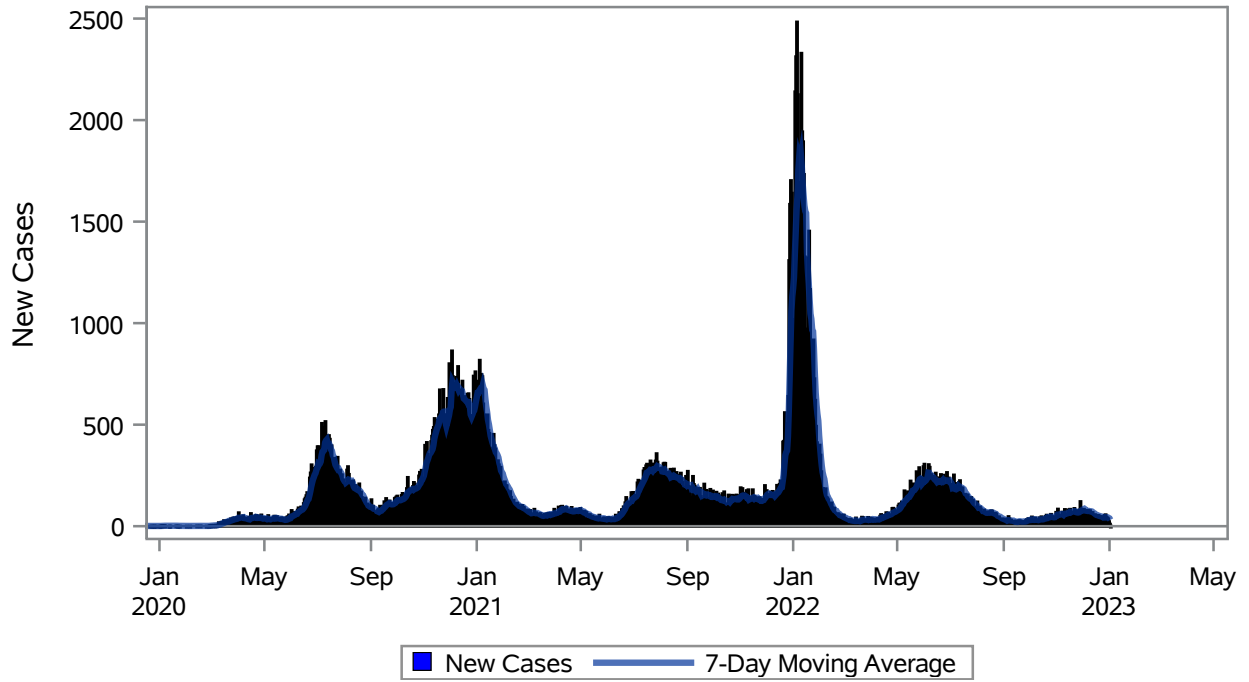


COVID19 Cases for Las Vegas, 7-Day Moving Average



Investigations are ongoing; data are subject to change.

Reporting through 02JAN2023

Las Vegas zip codes include 89101, 89102, 89104, 89106, 89108, 89109, 89110, 89117, 89129, 89130, 89131, 89143, 89146, 89149, 89166, 89145, 89144, 89134, 89107, 89128, 89138.

Table 1: New COVID19 Cases and 7-Day Moving Average in Las Vegas, Previous Two Weeks

Date (Daily)	New Cases	7-Day Moving Average
20DEC2022	41	50.86
21DEC2022	48	49.71
22DEC2022	48	48.43
23DEC2022	39	47.43
24DEC2022	40	46.14
25DEC2022	29	42.57
26DEC2022	54	42.71
27DEC2022	57	45.00
28DEC2022	45	44.57
29DEC2022	41	43.57
30DEC2022	37	43.29
31DEC2022	23	40.86

Note1: Event Date is calculated as follows based on completed information:

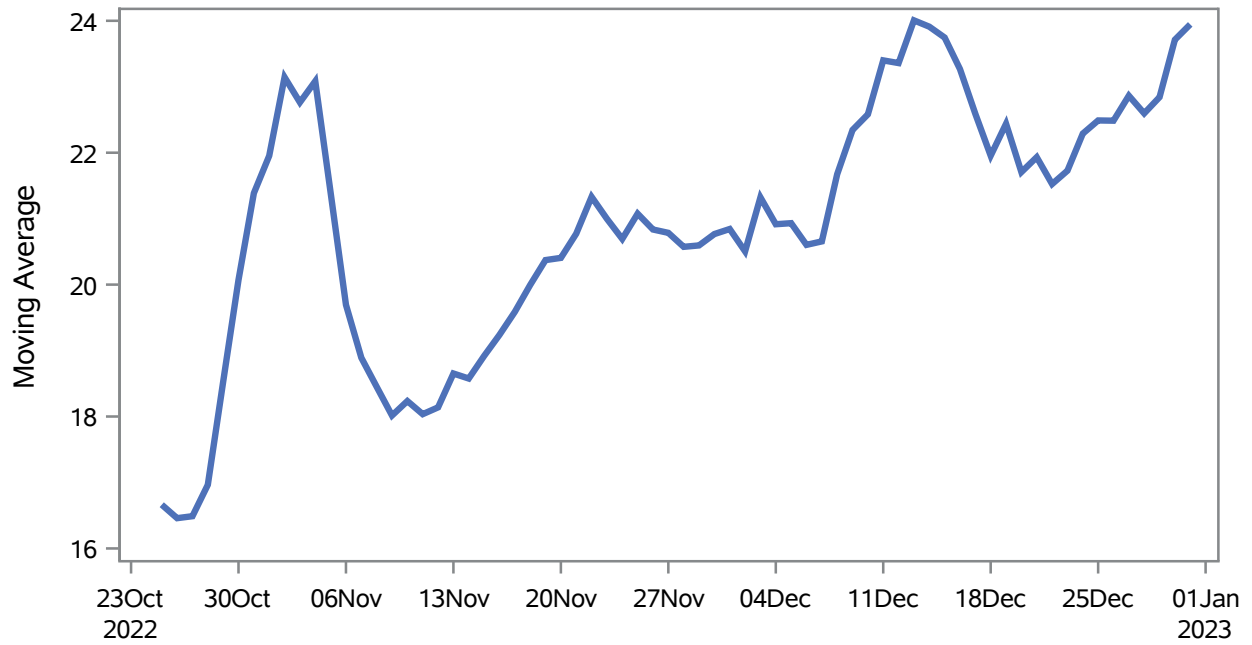
1) Disease onset date 2) Disease diagnosis date 3) Lab result collection date 4) Report date to SNHD.

Investigations are ongoing; data are subject to change.

Reporting through 02JAN2023

Las Vegas zip codes include 89101, 89102, 89104, 89106, 89108, 89109, 89110, 89117, 89129, 89130, 89131, 89143, 89146, 89149, 89166, 89145, 89144, 89134, 89107, 89128, 89138.

Percent of People Receiving COVID-19 Viral Tests Who Have Positive Results in Las Vegas



Investigations are ongoing; data are subject to change.

Reporting through 02JAN2023

Las Vegas zip codes include 89101, 89102, 89104, 89106, 89108, 89109, 89110, 89117, 89129, 89130, 89131, 89143, 89146, 89149, 89166, 89145, 89144, 89134, 89107, 89128, 89138.

Table 2: Percent of People Receiving COVID-19 Viral Tests Who Have Positive Results in Las Vegas

Collection Date	Positive	Negative	Equivocal	Total	% Positivity	7-Day Moving Average
17DEC2022	178	605		783	22.73	22.6
18DEC2022	170	625		795	21.38	22.0
19DEC2022	289	1009	1	1299	22.25	22.4
20DEC2022	220	996	2	1218	18.06	21.7
21DEC2022	234	852	1	1087	21.53	21.9
22DEC2022	253	972		1225	20.65	21.5
23DEC2022	210	614		824	25.49	21.7
24DEC2022	124	341		465	26.67	22.3
25DEC2022	100	339		439	22.78	22.5
26DEC2022	216	756		972	22.22	22.5
27DEC2022	266	1015	3	1284	20.72	22.9
28DEC2022	236	965		1201	19.65	22.6
29DEC2022	228	790	1	1019	22.37	22.8
30DEC2022	228	493	1	722	31.58	23.7
31DEC2022	133	337		470	28.30	23.9

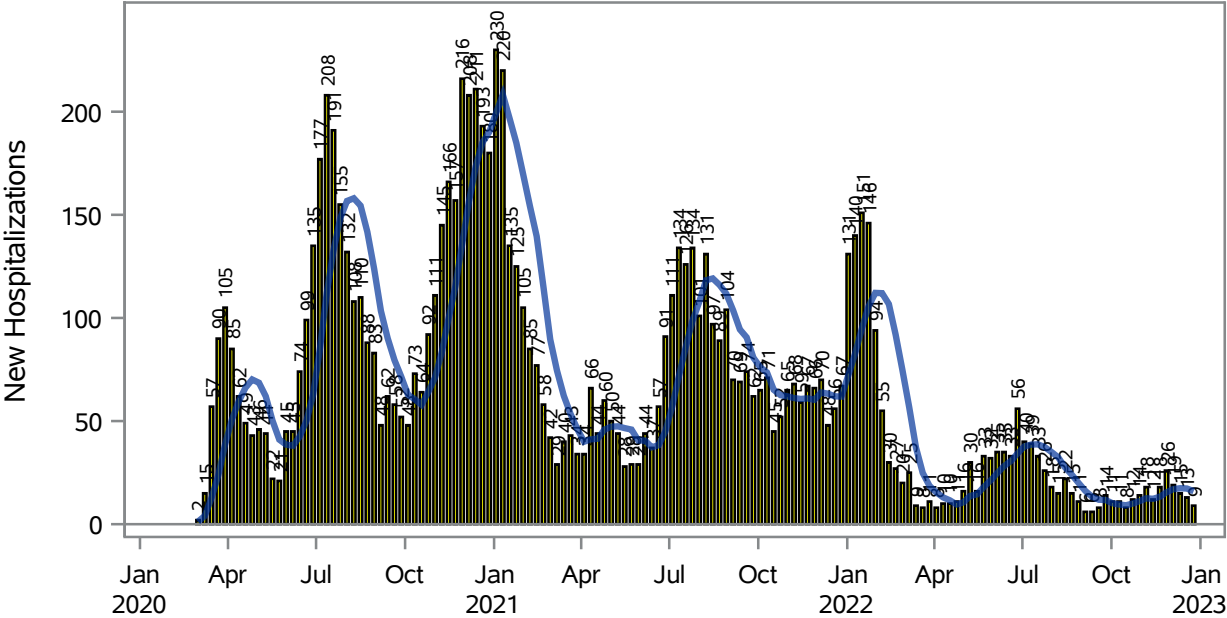
Note: Testing Data includes a 3 day delay

Investigations are ongoing; data are subject to change.

Reporting through 02JAN2023

Las Vegas zip codes include 89101, 89102, 89104, 89106, 89108, 89109, 89110, 89117, 89129, 89130, 89131, 89143, 89146, 89149, 89166, 89145, 89144, 89134, 89107, 89128, 89138.

COVID19 Hospitalizations for Las Vegas, 7-Day Moving Average



New Hospitalizations
 7-Day Moving Average

Investigations are ongoing; data are subject to change.

Reporting through 02JAN2023

Las Vegas zip codes include 89101, 89102, 89104, 89106, 89108, 89109, 89110, 89117, 89129, 89130, 89131, 89143, 89146, 89149, 89166, 89145, 89144, 89134, 89107, 89128, 89138.

Table 3: New COVID19-Related Hospitalizations and 7-Day Moving Average in Las Vegas, previous month

Week	Hospitalizations	7-Day Moving Average
04DEC2022	19	17.0
11DEC2022	15	17.4
18DEC2022	13	17.3
25DEC2022	9	16.0

Note1: Admission Date is calculated as follows based on completed information:
A) COVID19 Case is hospitalized B) COVID19 Case has a hospital admission date.

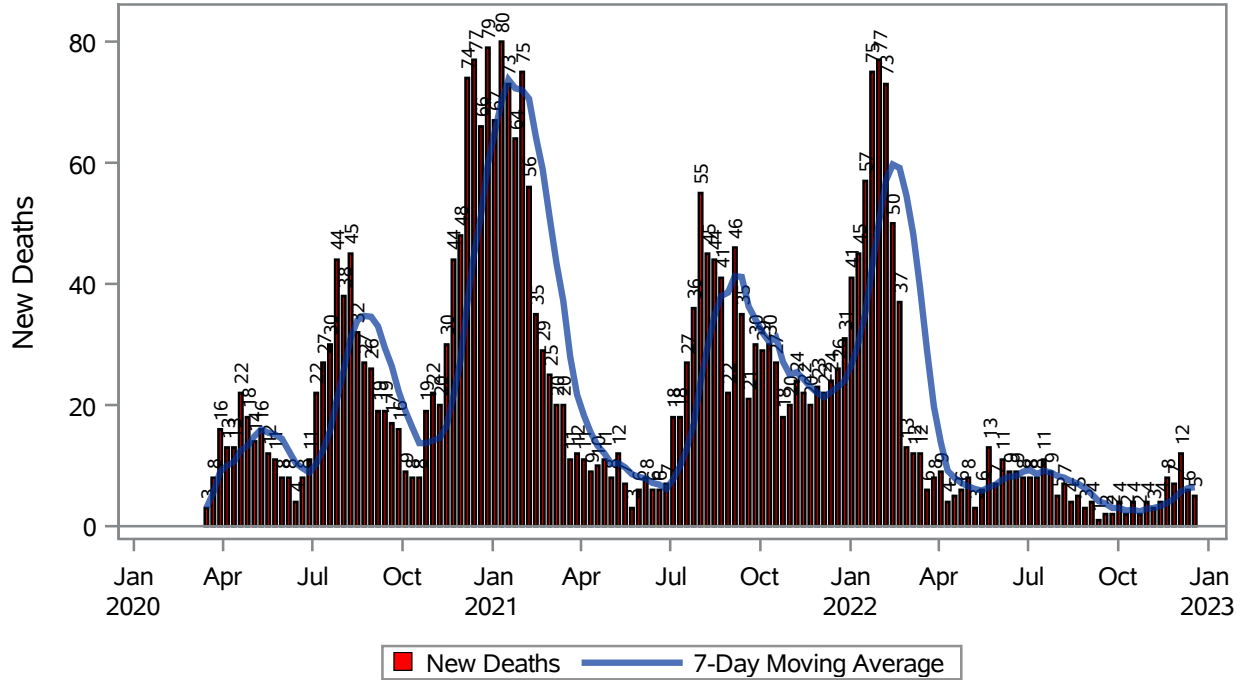
If admission date is missing, then the following is substituted temporarily, in order:
1) Disease onset date 2) Disease diagnosis date 3) Lab result collection date 4) Report date to SNHD.

Investigations are ongoing; data are subject to change.

Reporting through 02JAN2023

Las Vegas zip codes include 89101, 89102, 89104, 89106, 89108, 89109, 89110, 89117, 89129, 89130, 89131, 89143, 89146, 89149, 89166, 89145, 89144, 89134, 89107, 89128, 89138.

COVID19 Deaths for Las Vegas, 7-Day Moving Average



Investigations are ongoing; data are subject to change.

Reporting through 02JAN2023

Las Vegas zip codes include 89101, 89102, 89104, 89106, 89108, 89109, 89110, 89117, 89129, 89130, 89131, 89143, 89146, 89149, 89166, 89145, 89144, 89134, 89107, 89128, 89138.

Table 4: New COVID19-Related Deaths and 7-Day Moving Average in Las Vegas, Previous Month

Week	Deaths	7-Day Moving Average
04DEC2022	12	5.71
11DEC2022	6	6.29
18DEC2022	5	6.43

Note1: Date of Death is calculated as follows based on completed information:
A) COVID19 Case is reported as deceased B) COVID19 Case has a reported date of death.

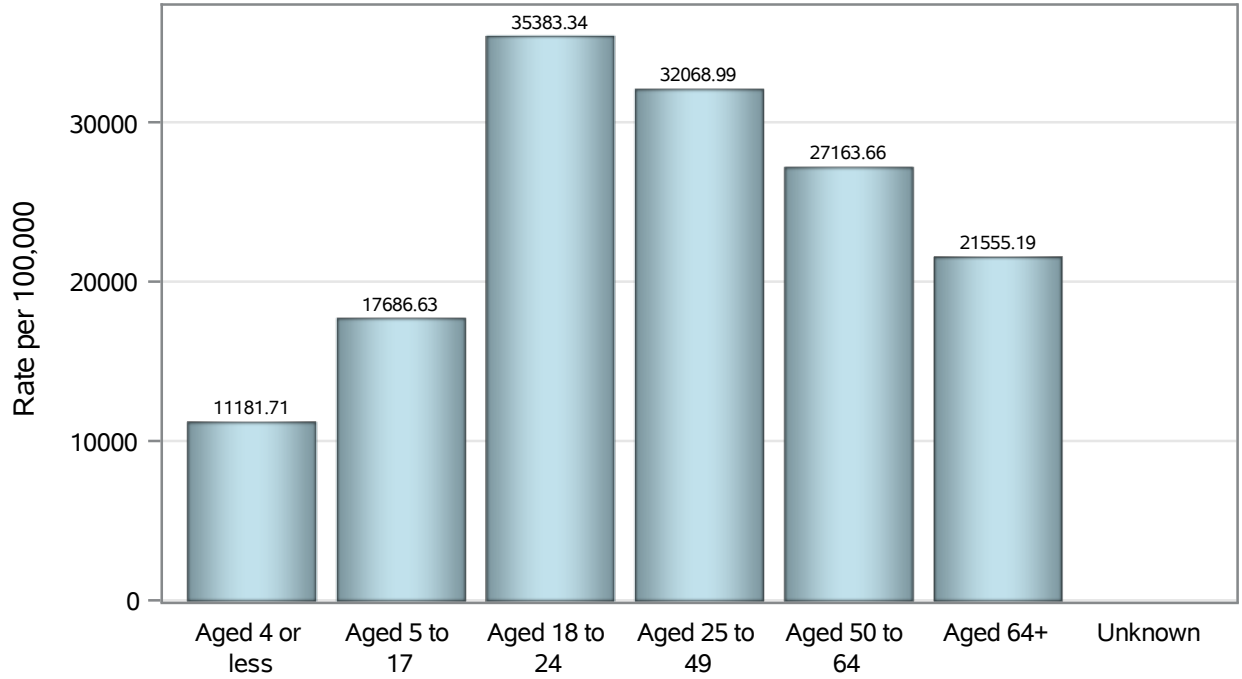
If date of death is missing, then the following is substituted temporarily, in order:
1) Disease onset date 2) Disease diagnosis date
3) Lab result collection date 4) Report date to SNHD.

Investigations are ongoing; data are subject to change.

Reporting through 02JAN2023

Las Vegas zip codes include 89101, 89102, 89104, 89106, 89108, 89109, 89110, 89117, 89129, 89130, 89131, 89143, 89146, 89149, 89166, 89145, 89144, 89134, 89107, 89128, 89138.

Case Age Rates in Las Vegas

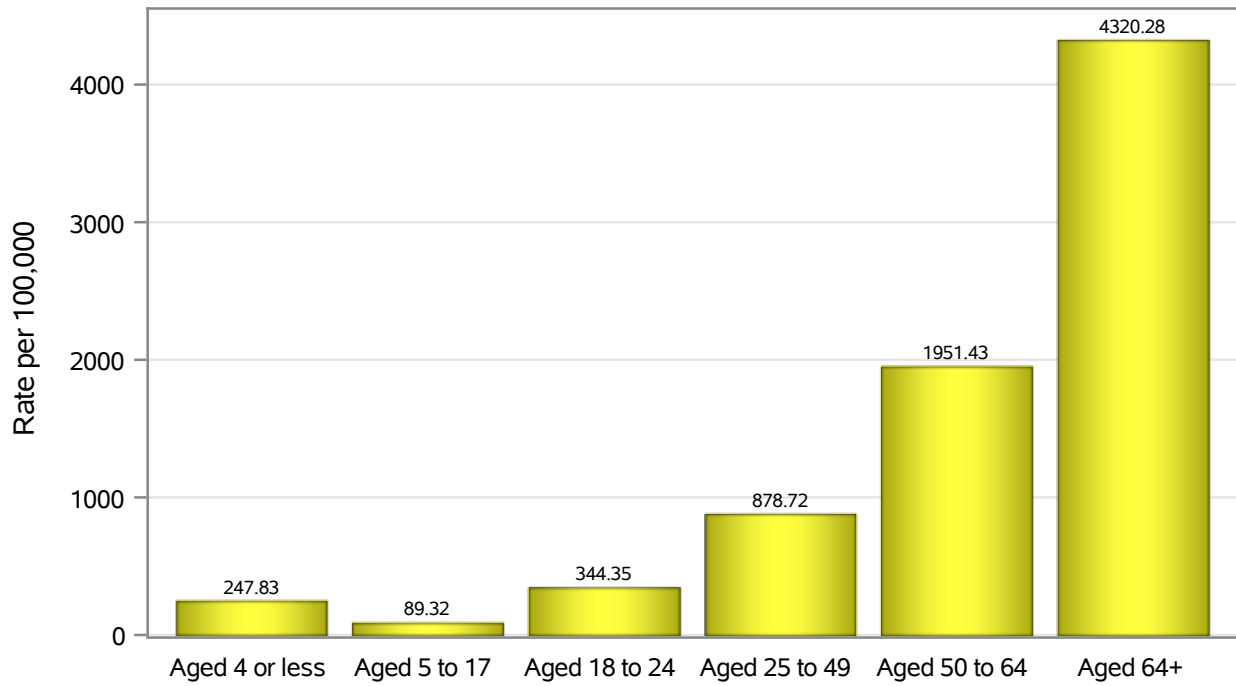


Investigations are ongoing; data are subject to change.

Reporting through 02JAN2023

Las Vegas zip codes include 89101, 89102, 89104, 89106, 89108, 89109, 89110, 89117, 89129, 89130, 89131, 89143, 89146, 89149, 89166, 89145, 89144, 89134, 89107, 89128, 89138.

Hospitalization Age Rates in Las Vegas

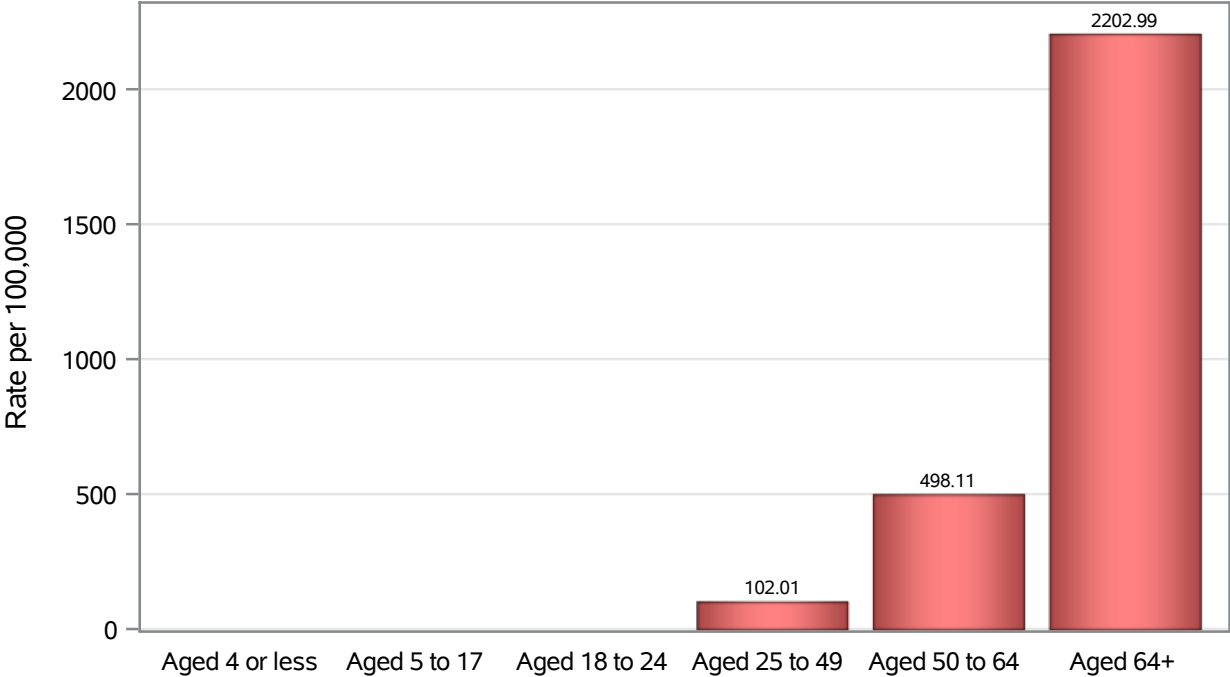


Investigations are ongoing; data are subject to change.

Reporting through 02JAN2023

Las Vegas zip codes include 89101, 89102, 89104, 89106, 89108, 89109, 89110, 89117, 89129, 89130, 89131, 89143, 89146, 89149, 89166, 89145, 89144, 89134, 89107, 89128, 89138.

Death Age Rates in Las Vegas



Investigations are ongoing; data are subject to change.

Reporting through 02JAN2023

Las Vegas zip codes include 89101, 89102, 89104, 89106, 89108, 89109, 89110, 89117, 89129, 89130, 89131, 89143, 89146, 89149, 89166, 89145, 89144, 89134, 89107, 89128, 89138.

Table 5: Age and COVID19 in Las Vegas

Case Status	Age Categories	N	%	Population	Rate per 100,000
Cases	Aged 4 or less	4963	2.7	44,385	11182
	Aged 5 to 17	21979	11.9	124269	17687
	Aged 18 to 24	20551	11.2	58,081	35383
	Aged 25 to 49	78282	42.6	244105	32069
	Aged 50 to 64	35774	19.4	131698	27164
	Aged 64+	22387	12.2	103859	21555
	Unknown	37	0.0	.	.
Hospitalizations	Aged 4 or less	110	1.1	44,385	247.83
	Aged 5 to 17	111	1.2	124269	89.32
	Aged 18 to 24	200	2.1	58,081	344.35
	Aged 25 to 49	2145	22.3	244105	878.72
	Aged 50 to 64	2570	26.7	131698	1951.4
	Aged 64+	4487	46.6	103859	4320.3
	Deaths	Aged 4 or less	1	0.0	44,385
Aged 5 to 17		2	0.1	124269	.
Aged 18 to 24		9	0.3	58,081	.
Aged 25 to 49		249	7.8	244105	102.01
Aged 50 to 64		656	20.5	131698	498.11
Aged 64+		2288	71.4	103859	2203.0

Note1: Population data source for calculating rate estimates: U.S. Census Bureau, ACS 5-year estimate.

Note2: Rates for categories with fewer than 12 cases are suppressed due to high relative standard error.

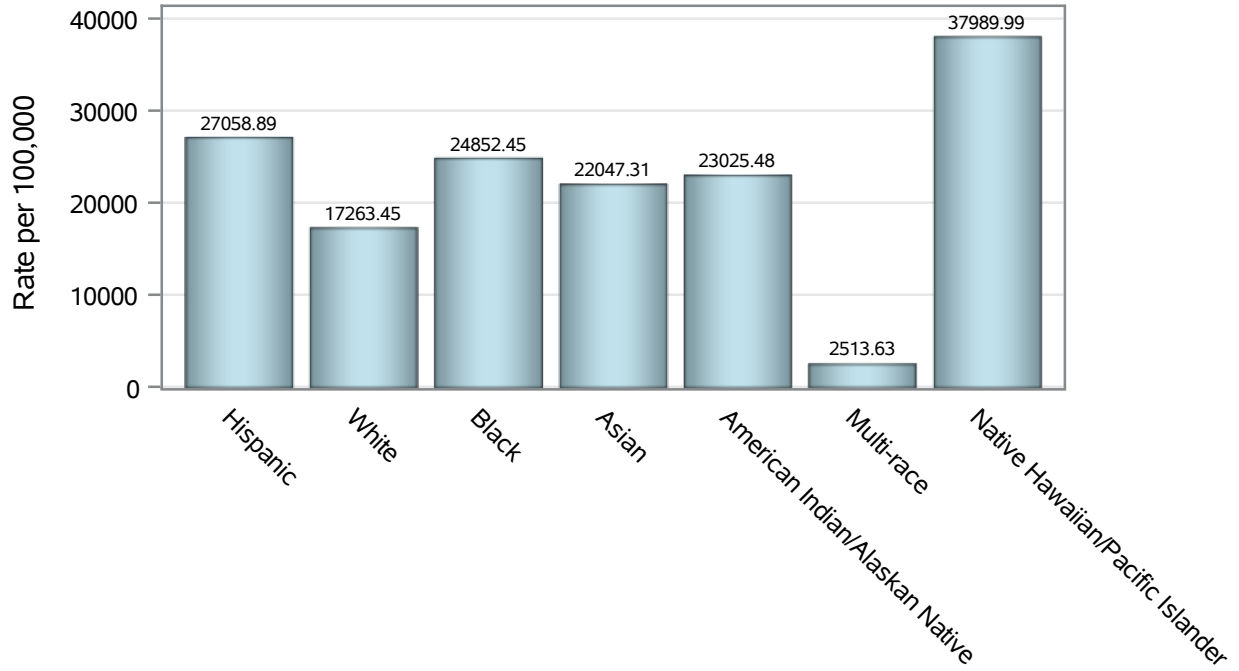
Note3: Hospitalizations are regardless of deceased status; Deaths are regardless of hospitalization status

Investigations are ongoing; data are subject to change.

Reporting through 02JAN2023

Las Vegas zip codes include 89101, 89102, 89104, 89106, 89108, 89109, 89110, 89117, 89129, 89130, 89131, 89143, 89146, 89149, 89166, 89145, 89144, 89134, 89107, 89128, 89138.

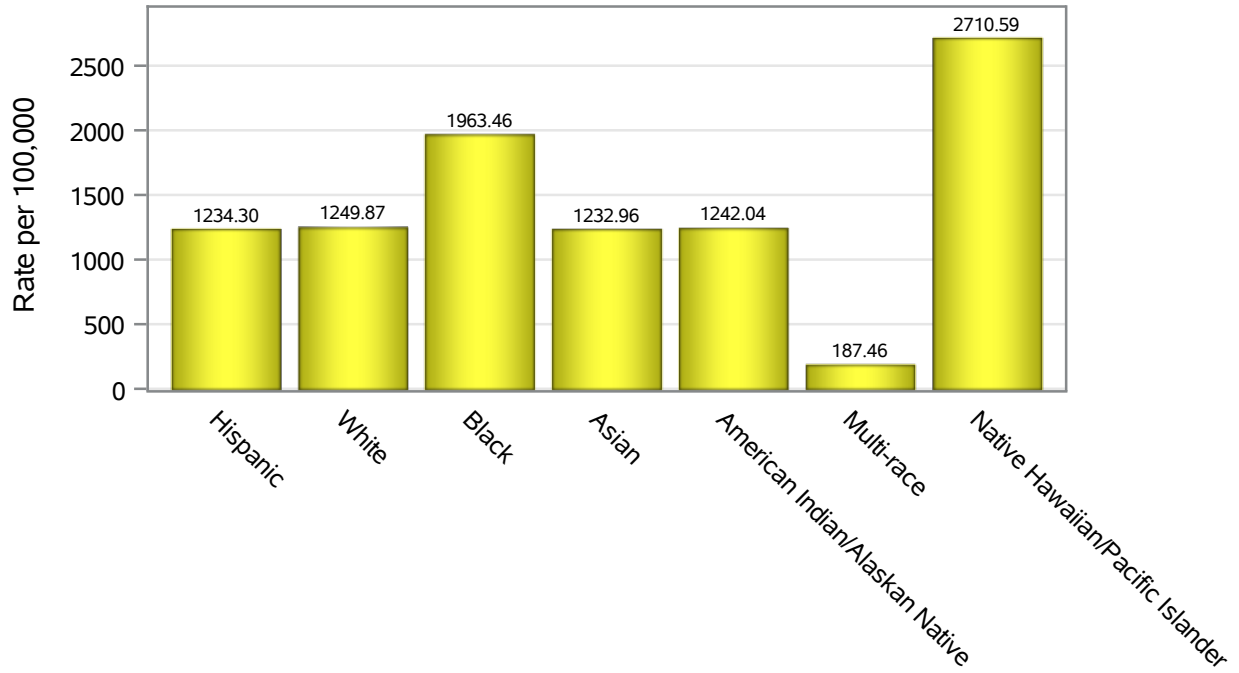
Case Race/Ethnicity Rates in Las Vegas



Investigations are ongoing; data are subject to change.
Reporting through 02JAN2023

Las Vegas zip codes include 89101, 89102, 89104, 89106, 89108, 89109, 89110, 89117, 89129, 89130, 89131, 89143, 89146, 89149, 89166, 89145, 89144, 89134, 89107, 89128, 89138.

Hospitalization Race/Ethnicity Rates in Las Vegas

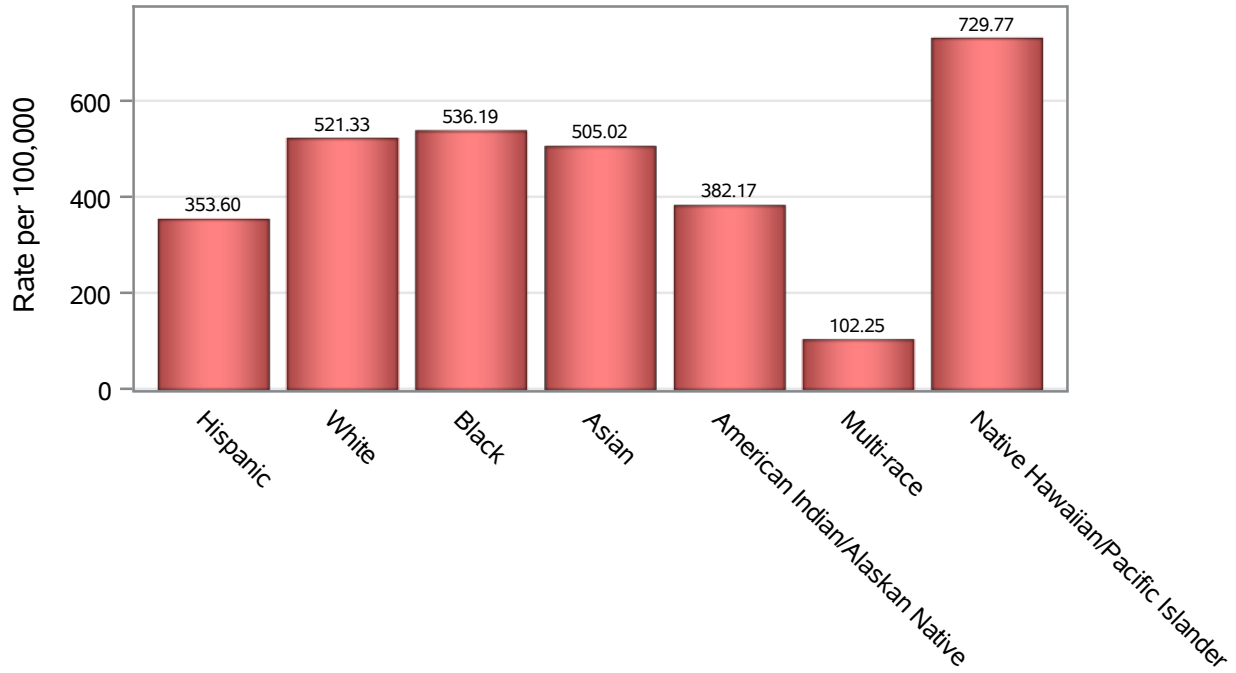


Investigations are ongoing; data are subject to change.

Reporting through 02JAN2023

Las Vegas zip codes include 89101, 89102, 89104, 89106, 89108, 89109, 89110, 89117, 89129, 89130, 89131, 89143, 89146, 89149, 89166, 89145, 89144, 89134, 89107, 89128, 89138.

Death Race/Ethnicity Rates in Las Vegas



Investigations are ongoing; data are subject to change.

Reporting through 02JAN2023

Las Vegas zip codes include 89101, 89102, 89104, 89106, 89108, 89109, 89110, 89117, 89129, 89130, 89131, 89143, 89146, 89149, 89166, 89145, 89144, 89134, 89107, 89128, 89138.

Table 6: Race/Ethnicity and COVID19 in Las Vegas

Case Status	Race Ethnicity Categories	N	%	Population	Rate per 100,000
Cases	Hispanic	61602	33.5	227659	27059
	White	54572	29.7	316113	17263
	Black	19328	10.5	77,771	24852
	Asian	11176	6.1	50,691	22047
	American Indian/Alaskan Native	723	0.4	3,140	23025
	Multi-race	590	0.3	23,472	2513.6
	Native Hawaiian/Pacific Islander	1822	1.0	4,796	37990
	Unknown	34160	18.6	.	.
Hospitalizations	Hispanic	2810	29.2	227659	1234.3
	White	3951	41.1	316113	1249.9
	Black	1527	15.9	77,771	1963.5
	Asian	625	6.5	50,691	1233.0
	American Indian/Alaskan Native	39	0.4	3,140	1242.0
	Multi-race	44	0.5	23,472	187.46
	Native Hawaiian/Pacific Islander	130	1.4	4,796	2710.6
	Unknown	497	5.2	.	.
Deaths	Hispanic	805	25.1	227659	353.60
	White	1648	51.4	316113	521.33
	Black	417	13.0	77,771	536.19
	Asian	256	8.0	50,691	505.02
	American Indian/Alaskan Native	12	0.4	3,140	382.17
	Multi-race	24	0.7	23,472	102.25
	Native Hawaiian/Pacific Islander	35	1.1	4,796	729.77
	Unknown	8	0.2	.	.

Note1: Population data source for calculating rate estimates: U.S. Census Bureau, ACS 5-year estimate.

Note2: Rates for categories with fewer than 12 cases are suppressed due to high relative standard error.

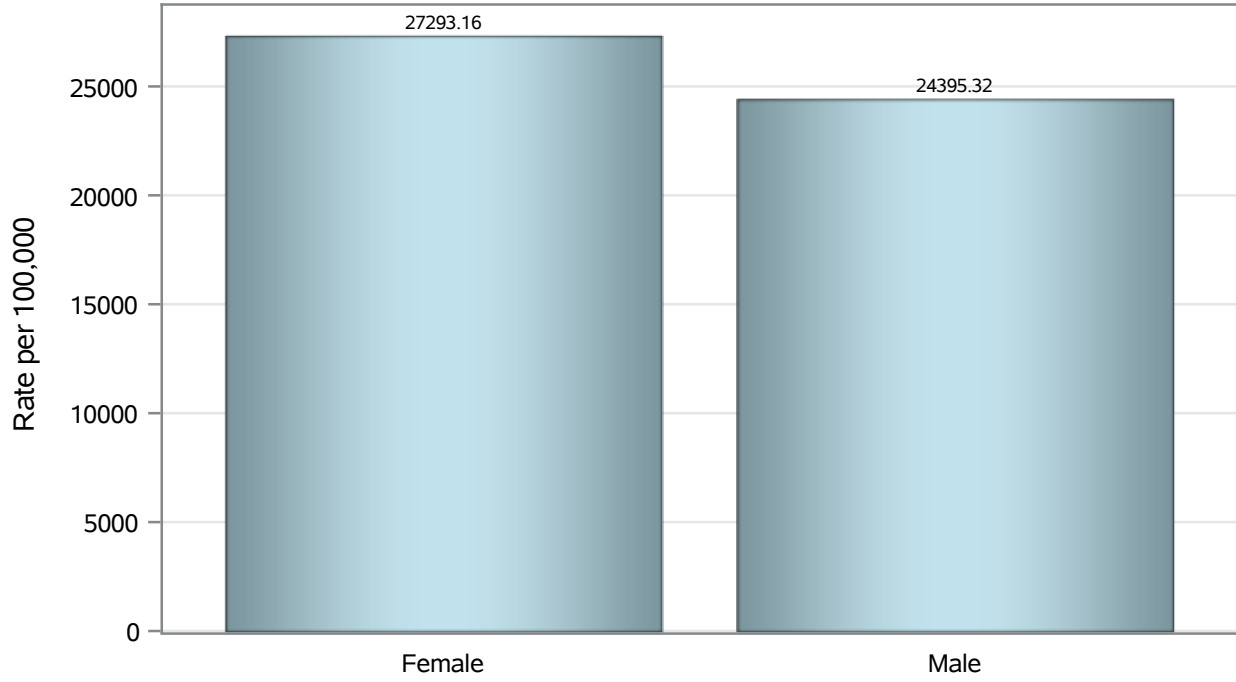
Note3: Hospitalizations are regardless of deceased status; Deaths are regardless of hospitalization status

Investigations are ongoing; data are subject to change.

Reporting through 02JAN2023

Las Vegas zip codes include 89101, 89102, 89104, 89106, 89108, 89109, 89110, 89117, 89129, 89130, 89131, 89143, 89146, 89149, 89166, 89145, 89144, 89134, 89107, 89128, 89138.

Case Birth Sex Rates in Las Vegas

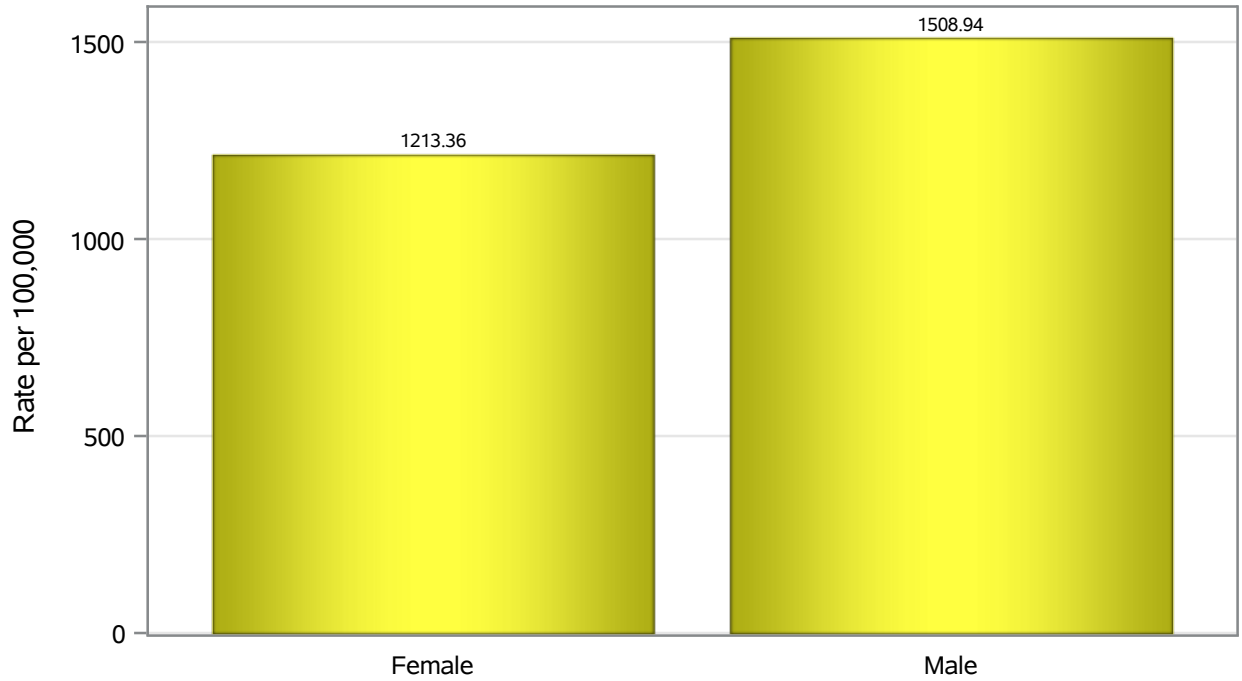


Investigations are ongoing; data are subject to change.

Reporting through 02JAN2023

Las Vegas zip codes include 89101, 89102, 89104, 89106, 89108, 89109, 89110, 89117, 89129, 89130, 89131, 89143, 89146, 89149, 89166, 89145, 89144, 89134, 89107, 89128, 89138.

Hospitalization Birth Sex Rates in Las Vegas

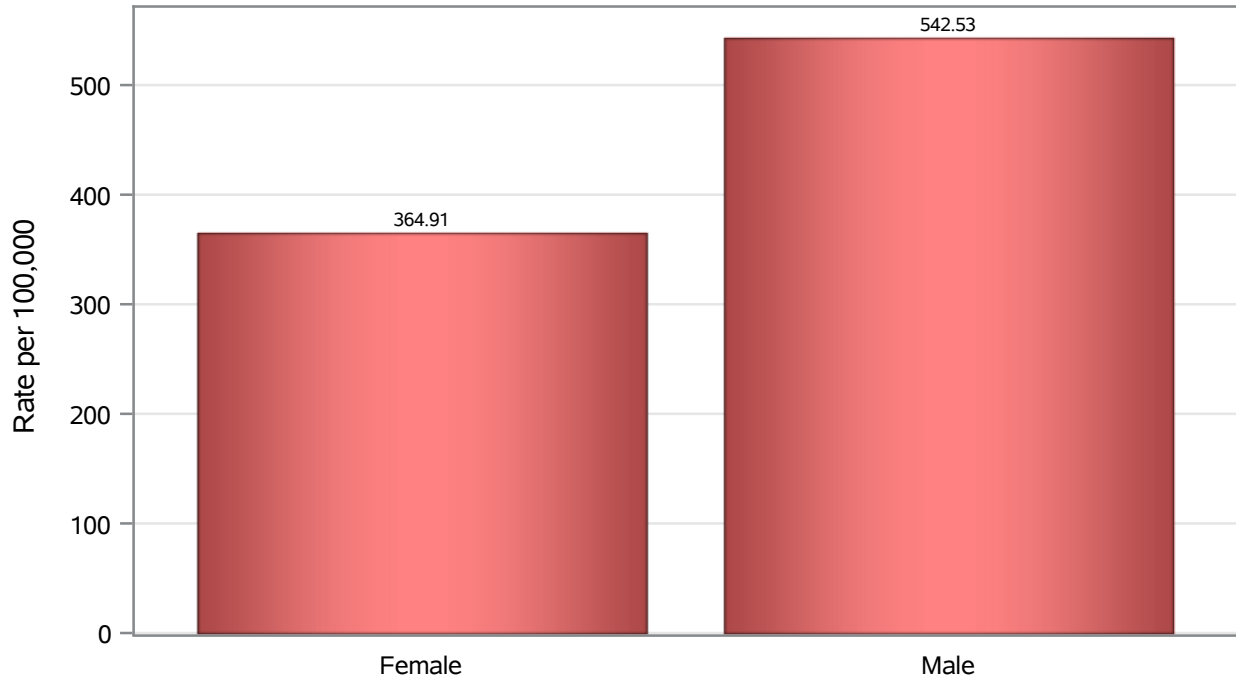


Investigations are ongoing; data are subject to change.

Reporting through 02JAN2023

Las Vegas zip codes include 89101, 89102, 89104, 89106, 89108, 89109, 89110, 89117, 89129, 89130, 89131, 89143, 89146, 89149, 89166, 89145, 89144, 89134, 89107, 89128, 89138.

Death Birth Sex Rates in Las Vegas



Investigations are ongoing; data are subject to change.

Reporting through 02JAN2023

Las Vegas zip codes include 89101, 89102, 89104, 89106, 89108, 89109, 89110, 89117, 89129, 89130, 89131, 89143, 89146, 89149, 89166, 89145, 89144, 89134, 89107, 89128, 89138.

Table 7: Birth Sex and COVID19 in Las Vegas

Case Status	Birth Sex Categories	N	%	Population	Rate per 100,000
Cases	Female	96409	52.4	353235	27293
	Male	86155	46.8	353162	24395
	Unknown	1409	0.8	.	.
Hospitalizations	Female	4286	44.5	353235	1213.4
	Male	5329	55.4	353162	1508.9
	Unknown	8	0.1	.	.
Deaths	Female	1289	40.2	353235	364.91
	Male	1916	59.8	353162	542.53

Note1: Population data source for calculating rate estimates: U.S. Census Bureau, ACS 5-year estimate.

Note2: Rates for categories with fewer than 12 cases are suppressed due to high relative standard error.

Note3: Hospitalizations are regardless of deceased status; Deaths are regardless of hospitalization status

Investigations are ongoing; data are subject to change.

Reporting through 02JAN2023

Las Vegas zip codes include 89101, 89102, 89104, 89106, 89108, 89109, 89110, 89117, 89129, 89130, 89131, 89143, 89146, 89149, 89166, 89145, 89144, 89134, 89107, 89128, 89138.