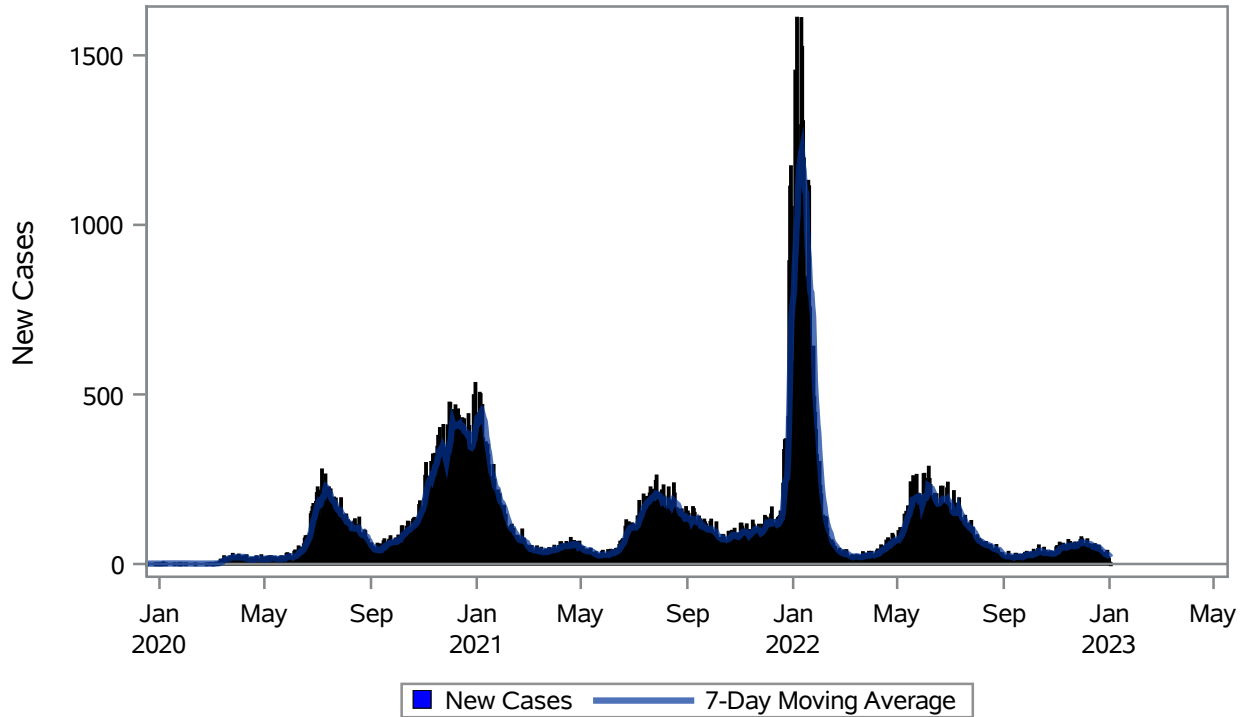


### COVID19 Cases for Henderson, 7-Day Moving Average



Investigations are ongoing; data are subject to change.

Reporting through 02JAN2023

Henderson zip codes include 89002, 89011, 89012, 89014, 89015, 89044, 89052, 89074, 89119, 89120, 89122, 89123, 89124, 89183.

**Table 1: New COVID19 Cases and 7-Day Moving Average in Henderson, Previous Two Weeks**

Date (Daily)	New Cases	7-Day Moving Average
20DEC2022	47	48.29
21DEC2022	37	45.43
22DEC2022	39	42.86
23DEC2022	33	40.14
24DEC2022	21	37.86
25DEC2022	20	35.71
26DEC2022	32	32.71
27DEC2022	24	29.43
28DEC2022	33	28.86
29DEC2022	38	28.71
30DEC2022	19	26.71
31DEC2022	15	25.86

---

Note1: Event Date is calculated as follows based on completed information:

1) Disease onset date 2) Disease diagnosis date 3) Lab result collection date 4) Report date to SNHD.

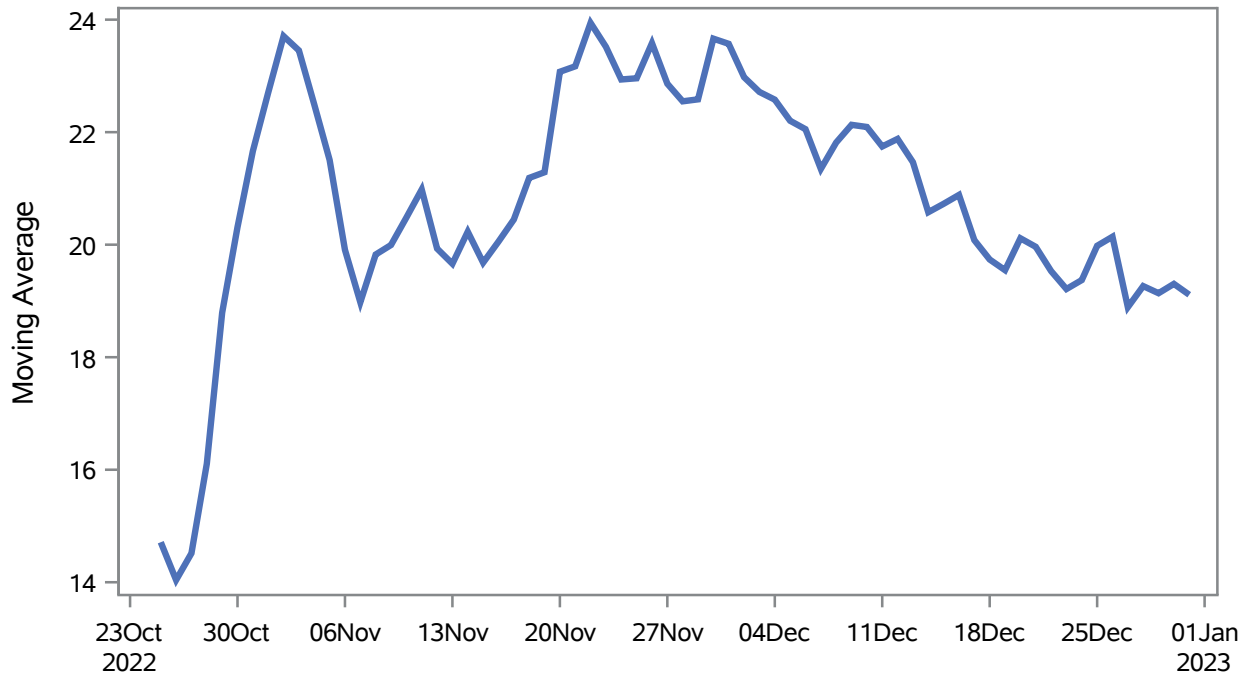
---

**Investigations are ongoing; data are subject to change.**

**Reporting through 02JAN2023**

**Henderson zip codes include 89002, 89011, 89012, 89014, 89015, 89044, 89052, 89074, 89119, 89120, 89122, 89123, 89124, 89183.**

### Percent of People Receiving COVID-19 Viral Tests Who Have Positive Results in Henderson



Investigations are ongoing; data are subject to change.

Reporting through 02JAN2023

Henderson zip codes include 89002, 89011, 89012, 89014, 89015, 89044, 89052, 89074, 89119, 89120, 89122, 89123, 89124, 89183.

**Table 2: Percent of People Receiving COVID-19 Viral Tests Who Have Positive Results in Henderson**

Collection Date	Positive	Negative	Equivocal	Total	% Positivity	7-Day Moving Average
17DEC2022	34	173		207	16.43	20.1
18DEC2022	35	151		186	18.82	19.7
19DEC2022	53	212		265	20.00	19.5
20DEC2022	56	170		226	24.78	20.1
21DEC2022	35	206		241	14.52	20.0
22DEC2022	41	170	2	213	19.25	19.5
23DEC2022	36	138		174	20.69	19.2
24DEC2022	20	94		114	17.54	19.4
25DEC2022	21	70		91	23.08	20.0
26DEC2022	45	168		213	21.13	20.1
27DEC2022	37	193	1	231	16.02	18.9
28DEC2022	42	203		245	17.14	19.3
29DEC2022	45	200		245	18.37	19.1
30DEC2022	26	93		119	21.85	19.3
31DEC2022	17	88		105	16.19	19.1

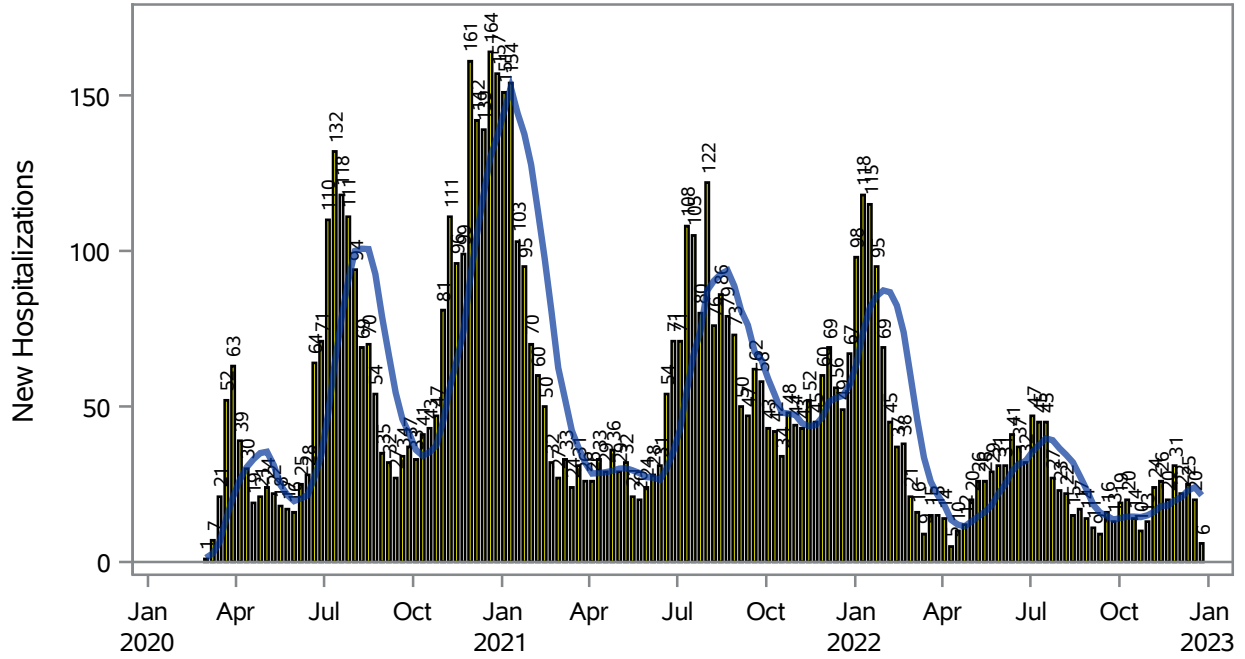
Note: Testing Data includes a 3 day delay

**Investigations are ongoing; data are subject to change.**

**Reporting through 02JAN2023**

**Henderson zip codes include 89002, 89011, 89012, 89014, 89015, 89044, 89052, 89074, 89119, 89120, 89122, 89123, 89124, 89183.**

### COVID19 Hospitalizations for Henderson, 7-Day Moving Average



■ New Hospitalizations   
 — 7-Day Moving Average

Investigations are ongoing; data are subject to change.

Reporting through 02JAN2023

Henderson zip codes include 89002, 89011, 89012, 89014, 89015, 89044, 89052, 89074, 89119, 89120, 89122, 89123, 89124, 89183.

**Table 3: New COVID19-Related Hospitalizations and 7-Day Moving Average in Henderson, previous month**

Week	Hospitalizations	7-Day Moving Average
04DEC2022	22	20.9
11DEC2022	25	23.0
18DEC2022	20	24.0
25DEC2022	6	21.4

---

Note1: Admission Date is calculated as follows based on completed information:  
A) COVID19 Case is hospitalized B) COVID19 Case has a hospital admission date.

If admission date is missing, then the following is substituted temporarily, in order:  
1) Disease onset date 2) Disease diagnosis date 3) Lab result collection date 4) Report date to SNHD.

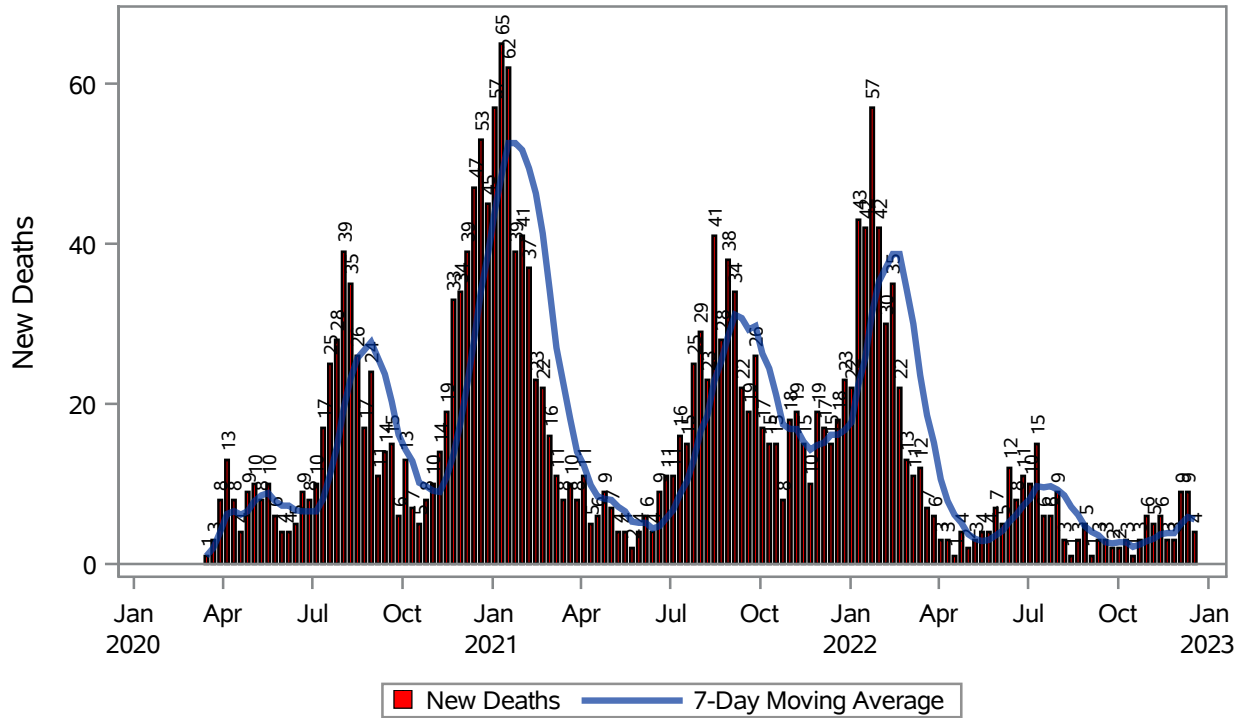
---

**Investigations are ongoing; data are subject to change.**

**Reporting through 02JAN2023**

**Henderson zip codes include 89002, 89011, 89012, 89014, 89015, 89044, 89052, 89074, 89119, 89120, 89122, 89123, 89124, 89183.**

### COVID19 Deaths for Henderson, 7-Day Moving Average



Investigations are ongoing; data are subject to change.

Reporting through 02JAN2023

Henderson zip codes include 89002, 89011, 89012, 89014, 89015, 89044, 89052, 89074, 89119, 89120, 89122, 89123, 89124, 89183.

**Table 4: New COVID19-Related Deaths and 7-Day Moving Average in Henderson, Previous Month**

Week	Deaths	7-Day Moving Average
04DEC2022	9	5.00
11DEC2022	9	5.86
18DEC2022	4	5.57

---

Note1: Date of Death is calculated as follows based on completed information:  
A) COVID19 Case is reported as deceased B) COVID19 Case has a reported date of death.

If date of death is missing, then the following is substituted temporarily, in order:  
1) Disease onset date 2) Disease diagnosis date  
3) Lab result collection date 4) Report date to SNHD.

---

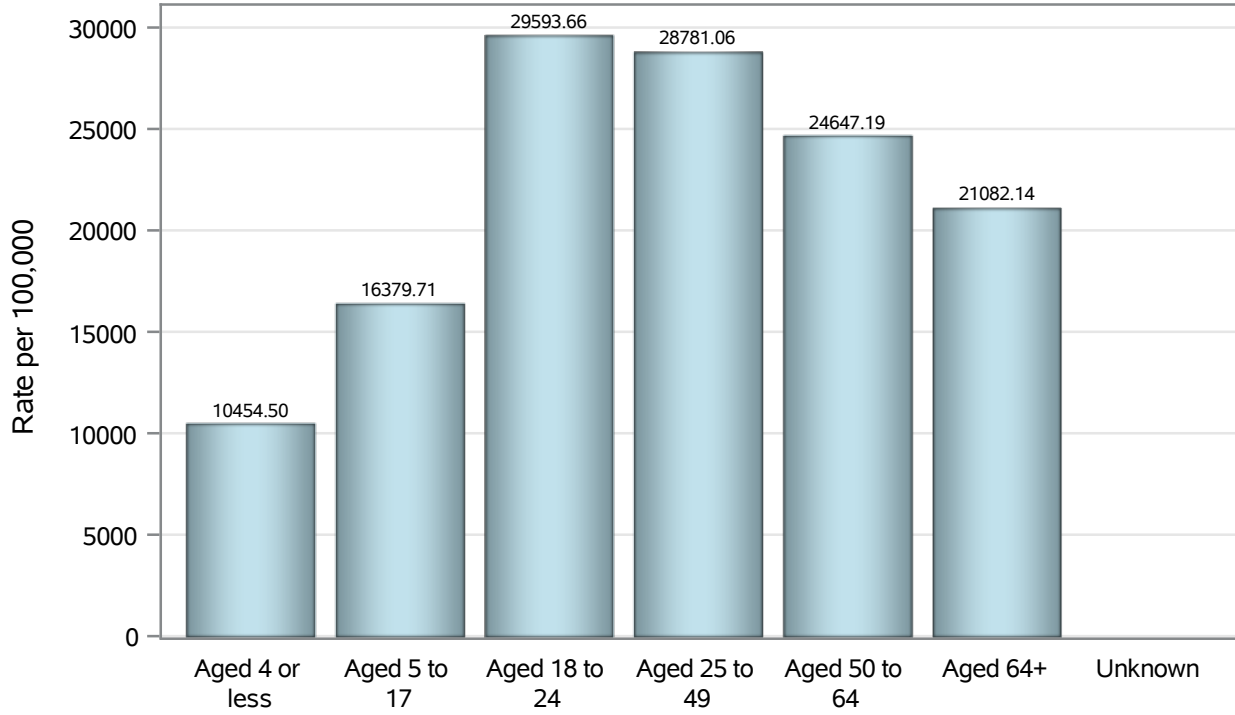
**Investigations are ongoing; data are subject to change.**

**Reporting through 02JAN2023**

**Henderson zip codes include 89002, 89011, 89012, 89014, 89015, 89044, 89052, 89074, 89119, 89120, 89122, 89123, 89124, 89183.**



### Case Age Rates in Henderson

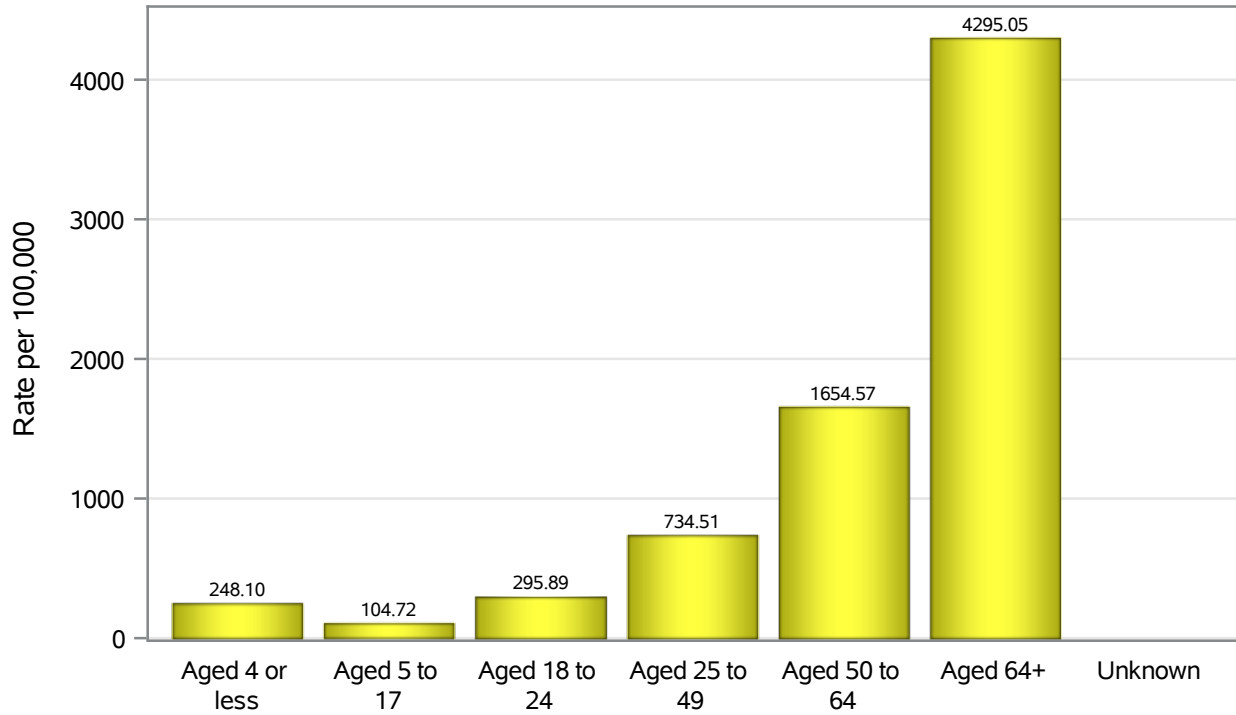


Investigations are ongoing; data are subject to change.

Reporting through 02JAN2023

Henderson zip codes include 89002, 89011, 89012, 89014, 89015, 89044, 89052, 89074, 89119, 89120, 89122, 89123, 89124, 89183.

### Hospitalization Age Rates in Henderson

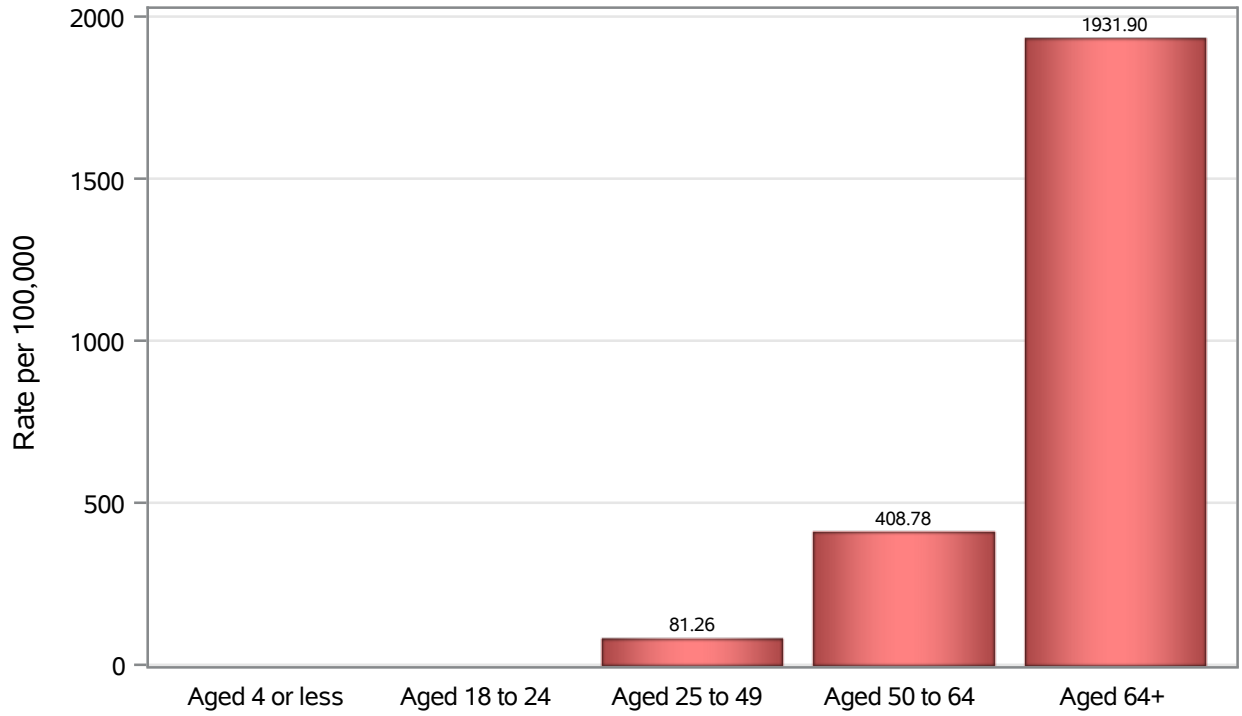


Investigations are ongoing; data are subject to change.

Reporting through 02JAN2023

Henderson zip codes include 89002, 89011, 89012, 89014, 89015, 89044, 89052, 89074, 89119, 89120, 89122, 89123, 89124, 89183.

### Death Age Rates in Henderson



Investigations are ongoing; data are subject to change.

Reporting through 02JAN2023

Henderson zip codes include 89002, 89011, 89012, 89014, 89015, 89044, 89052, 89074, 89119, 89120, 89122, 89123, 89124, 89183.

**Table 5: Age and COVID19 in Henderson**

Case Status	Age Categories	N	%	Population	Rate per 100,000
Cases	Aged 4 or less	3034	2.4	29,021	10454
	Aged 5 to 17	13452	10.6	82,126	16380
	Aged 18 to 24	13102	10.3	44,273	29594
	Aged 25 to 49	53839	42.4	187064	28781
	Aged 50 to 64	25324	19.9	102746	24647
	Aged 64+	18235	14.4	86,495	21082
	Unknown	26	0.0	.	.
Hospitalizations	Aged 4 or less	72	1.0	29,021	248.10
	Aged 5 to 17	86	1.2	82,126	104.72
	Aged 18 to 24	131	1.9	44,273	295.89
	Aged 25 to 49	1374	19.4	187064	734.51
	Aged 50 to 64	1700	24.0	102746	1654.6
	Aged 64+	3715	52.5	86,495	4295.0
	Unknown	1	0.0	.	.
Deaths	Aged 4 or less	1	0.0	29,021	.
	Aged 18 to 24	4	0.2	44,273	.
	Aged 25 to 49	152	6.8	187064	81.26
	Aged 50 to 64	420	18.7	102746	408.78
	Aged 64+	1671	74.3	86,495	1931.9

Note1: Population data source for calculating rate estimates: U.S. Census Bureau, ACS 5-year estimate.

Note2: Rates for categories with fewer than 12 cases are suppressed due to high relative standard error.

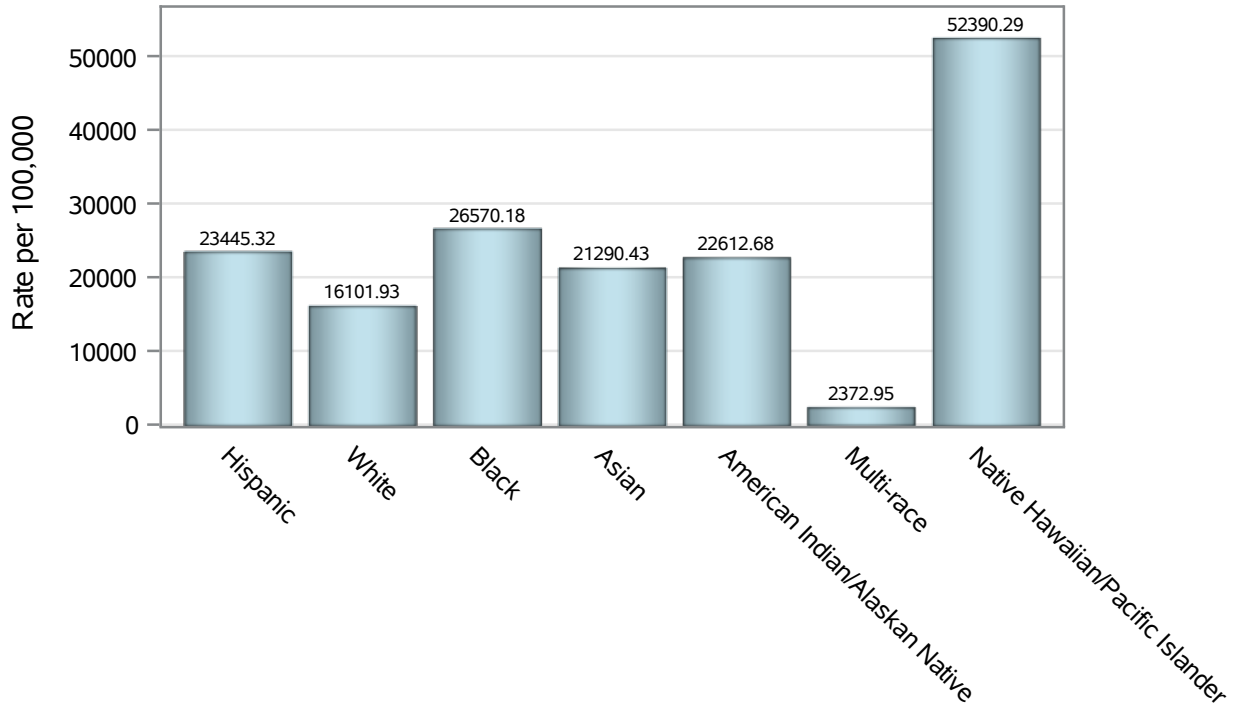
Note3: Hospitalizations are regardless of deceased status; Deaths are regardless of hospitalization status

**Investigations are ongoing; data are subject to change.**

**Reporting through 02JAN2023**

**Henderson zip codes include 89002, 89011, 89012, 89014, 89015, 89044, 89052, 89074, 89119, 89120, 89122, 89123, 89124, 89183.**

### Case Race/Ethnicity Rates in Henderson

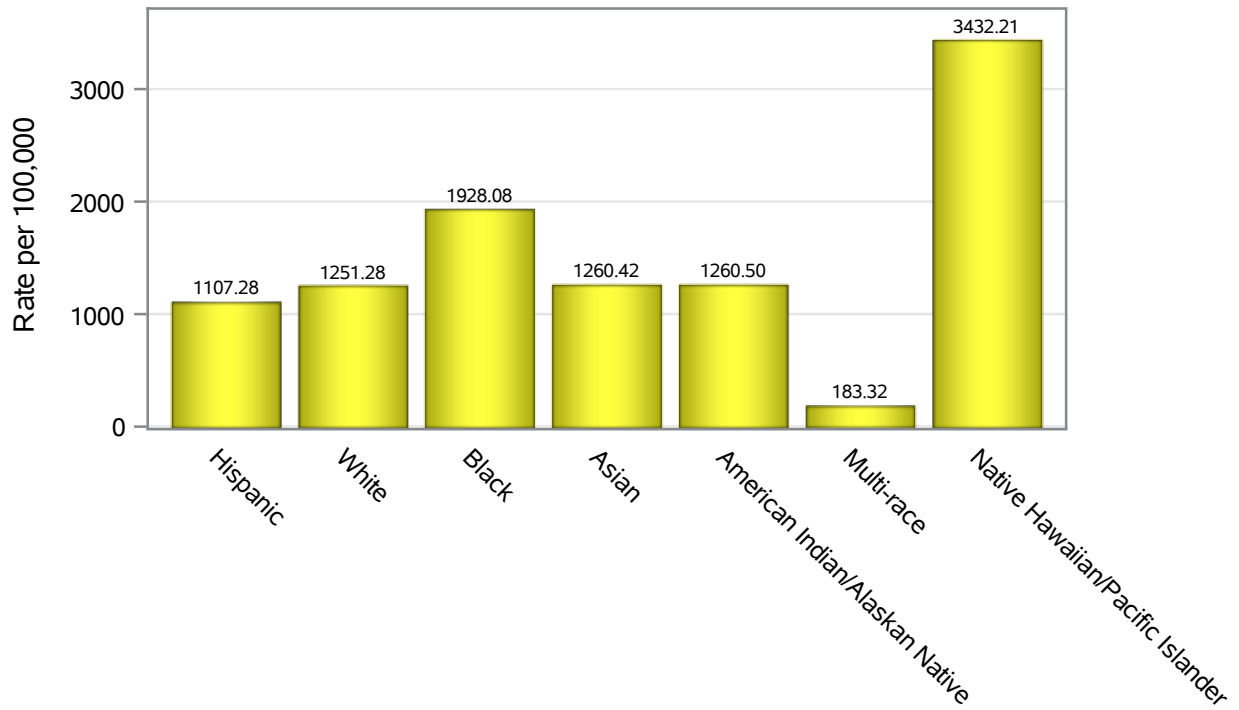


Investigations are ongoing; data are subject to change.

Reporting through 02JAN2023

Henderson zip codes include 89002, 89011, 89012, 89014, 89015, 89044, 89052, 89074, 89119, 89120, 89122, 89123, 89124, 89183.

### Hospitalization Race/Ethnicity Rates in Henderson

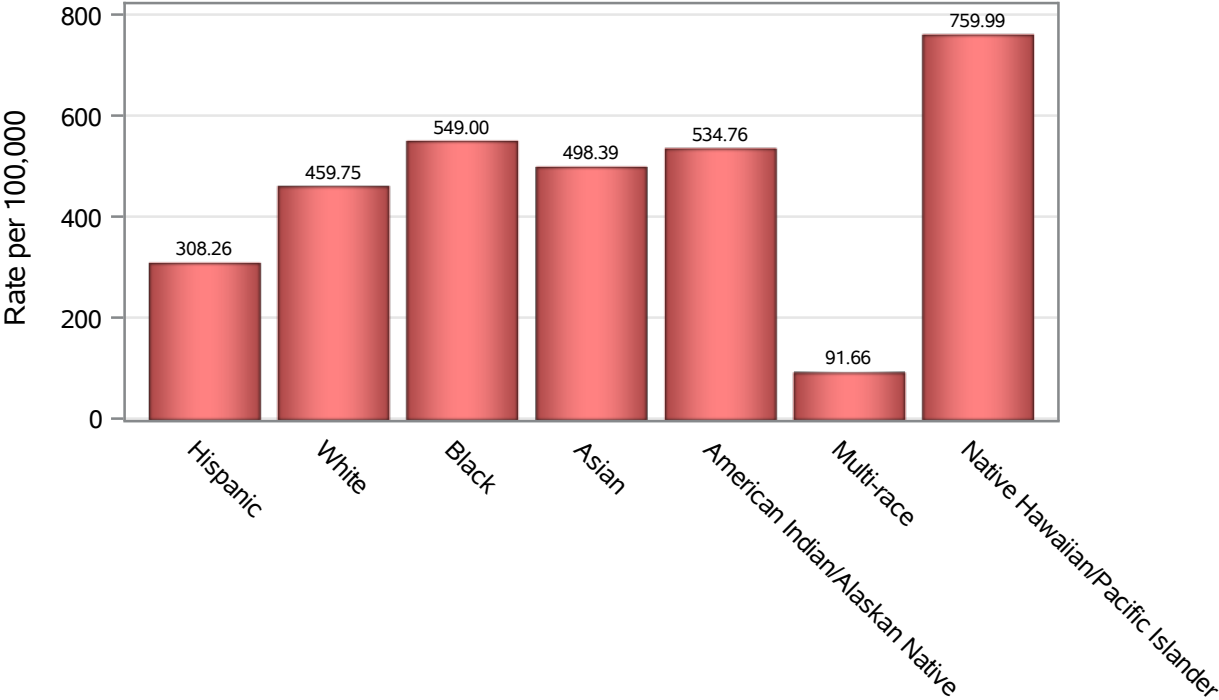


Investigations are ongoing; data are subject to change.

Reporting through 02JAN2023

Henderson zip codes include 89002, 89011, 89012, 89014, 89015, 89044, 89052, 89074, 89119, 89120, 89122, 89123, 89124, 89183.

### Death Race/Ethnicity Rates in Henderson



Investigations are ongoing; data are subject to change.

Reporting through 02JAN2023

Henderson zip codes include 89002, 89011, 89012, 89014, 89015, 89044, 89052, 89074, 89119, 89120, 89122, 89123, 89124, 89183.

**Table 6: Race/Ethnicity and COVID19 in Henderson**

Case Status	Race Ethnicity Categories	N	%	Population	Rate per 100,000
Cases	Hispanic	28521	22.5	121649	23445
	White	46931	37.0	291462	16102
	Black	10115	8.0	38,069	26570
	Asian	11064	8.7	51,967	21290
	American Indian/Alaskan Native	592	0.5	2,618	22613
	Multi-race	466	0.4	19,638	2373.0
	Native Hawaiian/Pacific Islander	2137	1.7	4,079	52390
	Unknown	27186	21.4	.	.
Hospitalizations	Hispanic	1347	19.0	121649	1107.3
	White	3647	51.5	291462	1251.3
	Black	734	10.4	38,069	1928.1
	Asian	655	9.3	51,967	1260.4
	American Indian/Alaskan Native	33	0.5	2,618	1260.5
	Multi-race	36	0.5	19,638	183.32
	Native Hawaiian/Pacific Islander	140	2.0	4,079	3432.2
	Unknown	487	6.9	.	.
Deaths	Hispanic	375	16.7	121649	308.26
	White	1340	59.6	291462	459.75
	Black	209	9.3	38,069	549.00
	Asian	259	11.5	51,967	498.39
	American Indian/Alaskan Native	14	0.6	2,618	534.76
	Multi-race	18	0.8	19,638	91.66
	Native Hawaiian/Pacific Islander	31	1.4	4,079	759.99
	Unknown	2	0.1	.	.

Note1: Population data source for calculating rate estimates: U.S. Census Bureau, ACS 5-year estimate.

Note2: Rates for categories with fewer than 12 cases are suppressed due to high relative standard error.

Note3: Hospitalizations are regardless of deceased status; Deaths are regardless of hospitalization status

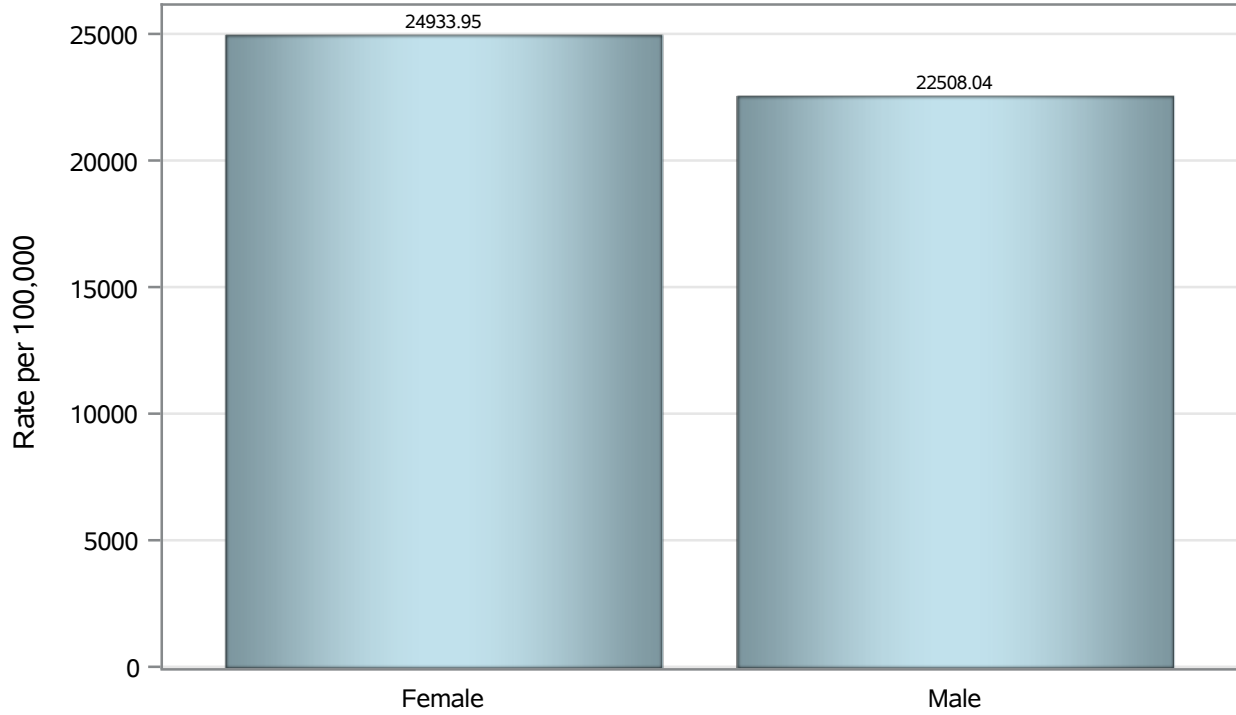
**Investigations are ongoing; data are subject to change.**

**Reporting through 02JAN2023**

**Henderson zip codes include 89002, 89011, 89012, 89014, 89015, 89044, 89052, 89074, 89119, 89120, 89122, 89123, 89124, 89183.**



### Case Birth Sex Rates in Henderson

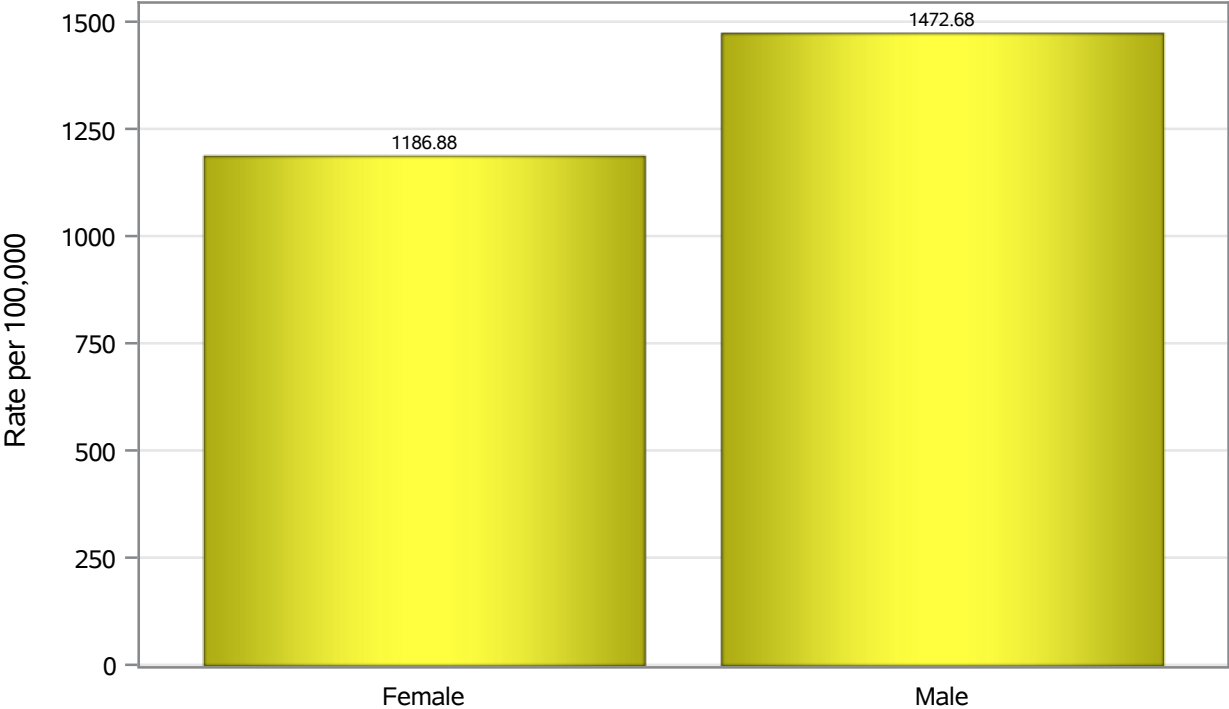


Investigations are ongoing; data are subject to change.

Reporting through 02JAN2023

Henderson zip codes include 89002, 89011, 89012, 89014, 89015, 89044, 89052, 89074, 89119, 89120, 89122, 89123, 89124, 89183.

### Hospitalization Birth Sex Rates in Henderson

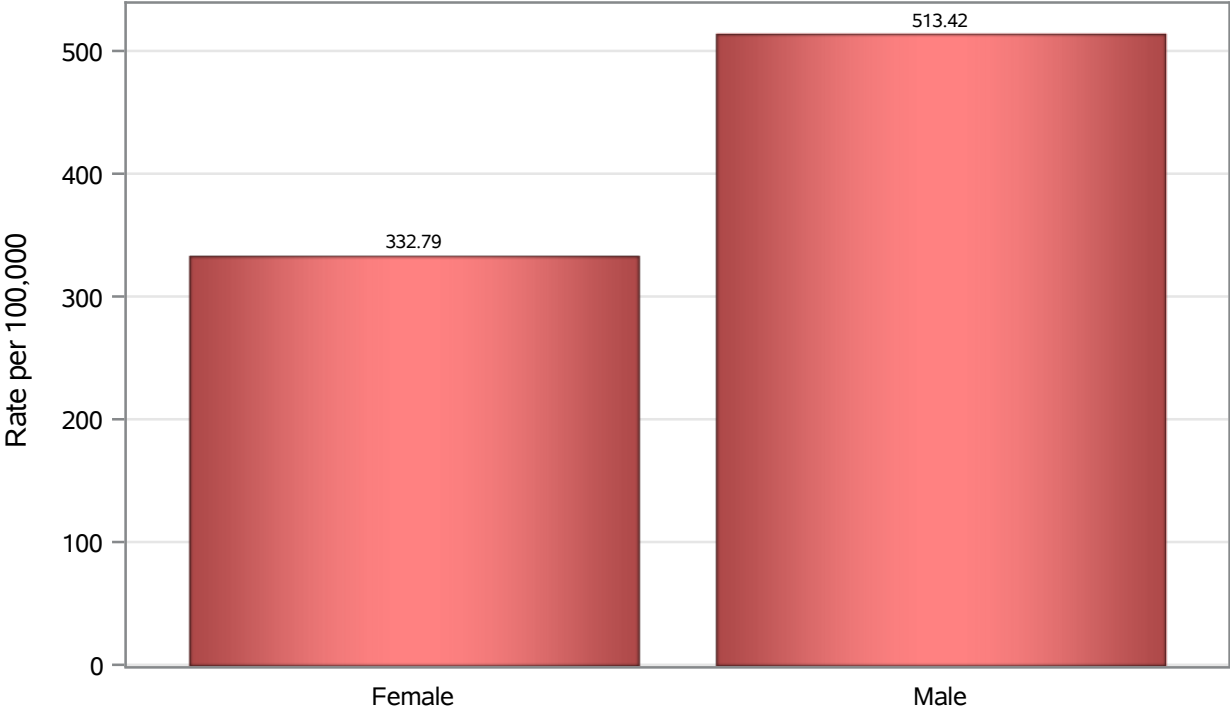


Investigations are ongoing; data are subject to change.

Reporting through 02JAN2023

Henderson zip codes include 89002, 89011, 89012, 89014, 89015, 89044, 89052, 89074, 89119, 89120, 89122, 89123, 89124, 89183.

**Death Birth Sex Rates in Henderson**



Investigations are ongoing; data are subject to change.  
Reporting through 02JAN2023

Henderson zip codes include 89002, 89011, 89012, 89014, 89015, 89044, 89052, 89074, 89119, 89120, 89122, 89123, 89124, 89183.

**Table 7: Birth Sex and COVID19 in Henderson**

Case Status	Birth Sex Categories	N	%	Population	Rate per 100,000
Cases	Female	66532	52.4	266833	24934
	Male	59622	46.9	264892	22508
	Unknown	858	0.7	.	.
Hospitalizations	Female	3167	44.7	266833	1186.9
	Male	3901	55.1	264892	1472.7
	Unknown	11	0.2	.	.
Deaths	Female	888	39.5	266833	332.79
	Male	1360	60.5	264892	513.42

Note1: Population data source for calculating rate estimates: U.S. Census Bureau, ACS 5-year estimate.

Note2: Rates for categories with fewer than 12 cases are suppressed due to high relative standard error.

Note3: Hospitalizations are regardless of deceased status; Deaths are regardless of hospitalization status

**Investigations are ongoing; data are subject to change.**

**Reporting through 02JAN2023**

**Henderson zip codes include 89002, 89011, 89012, 89014, 89015, 89044, 89052, 89074, 89119, 89120, 89122, 89123, 89124, 89183.**