

# COVID-19 Trends

Clark County, Nevada

Document creation date: January 2, 2023

- General notes: This report uses surveillance data collected by the Southern Nevada Health District. Due to delays related to laboratory processing, reporting, and case investigations, data from the most recent days are less complete than data from older time points. For this reason, as of June 10, 2020 this report will not display data from the previous three days prior to the date that the report was created. As many case investigations are ongoing, all data presented in this report are considered preliminary and subject to change. Data regarding cases, hospitalizations, deaths, and labs were last updated January 2, 2023 at 12:00 AM, and data is reported up through December 29, 2022.
- Cases: Symptom onset date was used for aggregating cases. If symptom onset date was missing, the following dates were substituted in this order: diagnosis date, lab collection date, report date (date case was reported to SNHD), event creation date (date case was entered into TriSano, SNHD's surveillance system).
- Hospitalizations: Admission date reported the the Nevada Hospital Association was used for aggregating hospitalizations. One person could have more than one admissions.
- Deaths: Date of death was used for aggregating deaths. If date of death was missing, report date was used.
- For the "7-Day Average of Daily New Cases per 100K, by Age Group (Years)" graph and table, the population data source for calculating rate estimates was from Nevada State Demographer "2019 ASRHO Estimates and Projections Summary 2000 to 2038", 2020 projection, vintage 2019. Rates for individual age categories may be based on small numbers, which may give unstable estimates.
- All graphs in this report show data from approximately 60 days prior to the date of the report.
- All tables show data from the last 14 days before the current date, with the exception of the "Percent Change in Weekly Totals from Previous Week", which displays data from the previous eight completed weeks.
- For the "Percent of People Receiving COVID-19 PCR Tests Who Have Positive Results" graph, one person who has multiple specimens collected in one day is only reported once. If any test of that person is positive, that person counts as a positive result. If all tests of that individual are negative, that person counts as a negative result. Laboratory tests were included if they were a test assessing for the presence of SARS-CoV-2 viral RNA, for example PCR tests. Antibody and antigen tests were excluded.

# COVID-19 Cases

Clark County, NV

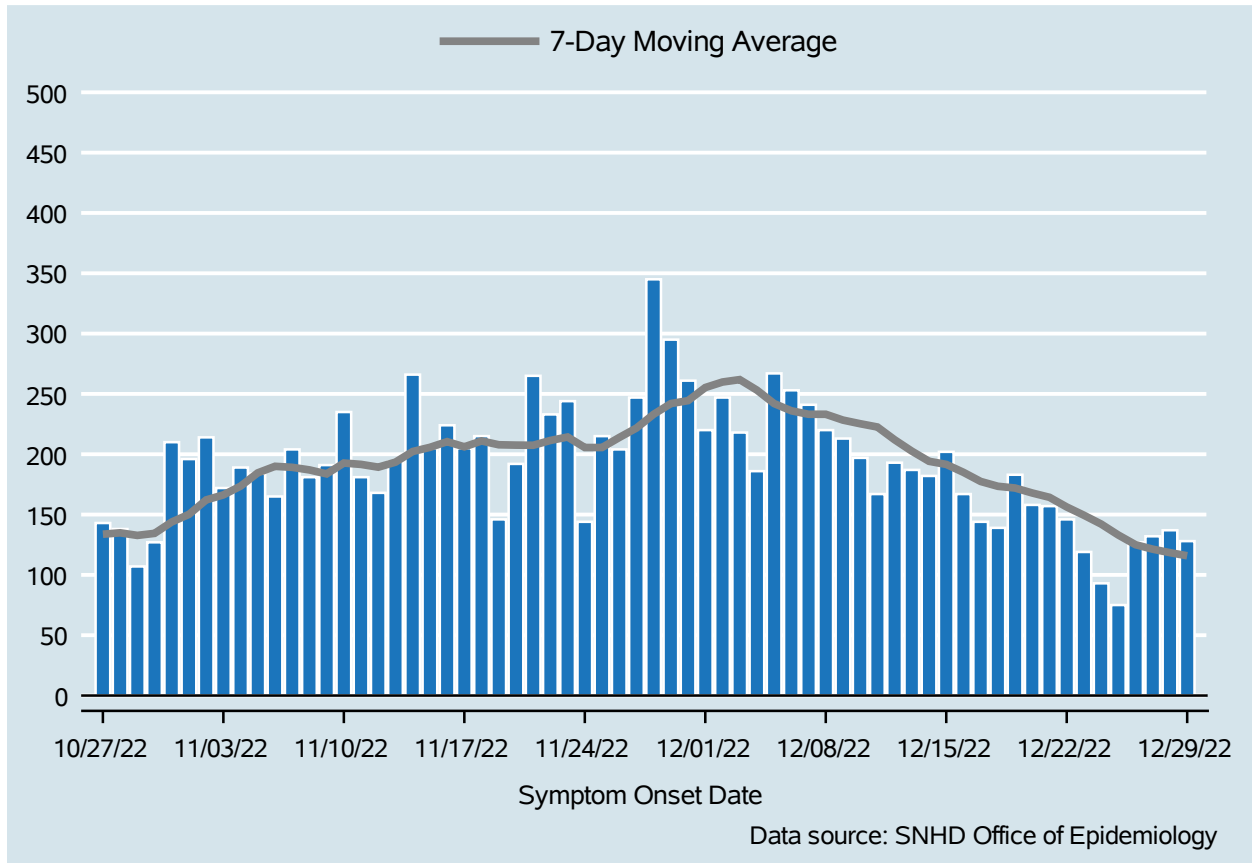


Table 1: COVID-19 Cases per Day, Clark County, NV

Date	Cases Per Day	7-Day Moving Average
Dec 16	167	185.0
Dec 17	144	177.4
Dec 18	139	173.4
Dec 19	183	172.0
Dec 20	158	167.9
Dec 21	157	164.3
Dec 22	146	156.3
Dec 23	119	149.4
Dec 24	93	142.1
Dec 25	75	133.0
Dec 26	127	125.0
Dec 27	132	121.3
Dec 28	137	118.4
Dec 29	128	115.9

# COVID-19 Hospitalizations

Clark County, NV

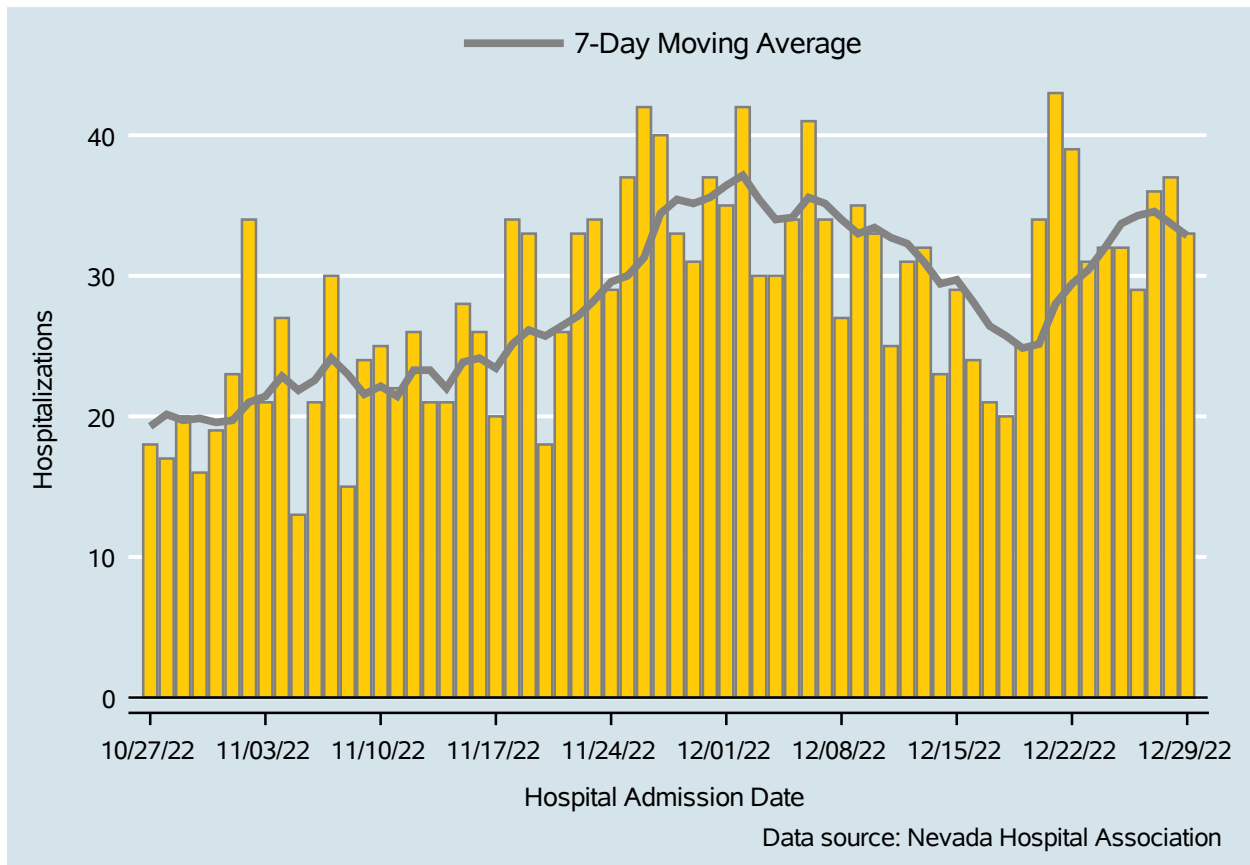


Table 2: COVID-19 Hospitalizations per Day, Clark County, NV

Date	Hospitalizations Per Day	7-Day Moving Average
Dec 16	24	28.1
Dec 17	21	26.4
Dec 18	20	25.7
Dec 19	25	24.9
Dec 20	34	25.1
Dec 21	43	28.0
Dec 22	39	29.4
Dec 23	31	30.4
Dec 24	32	32.0
Dec 25	32	33.7
Dec 26	29	34.3
Dec 27	36	34.6
Dec 28	37	33.7
Dec 29	33	32.9

# Bed Occupancy of COVID-19 Hospitalizations

Clark County, NV

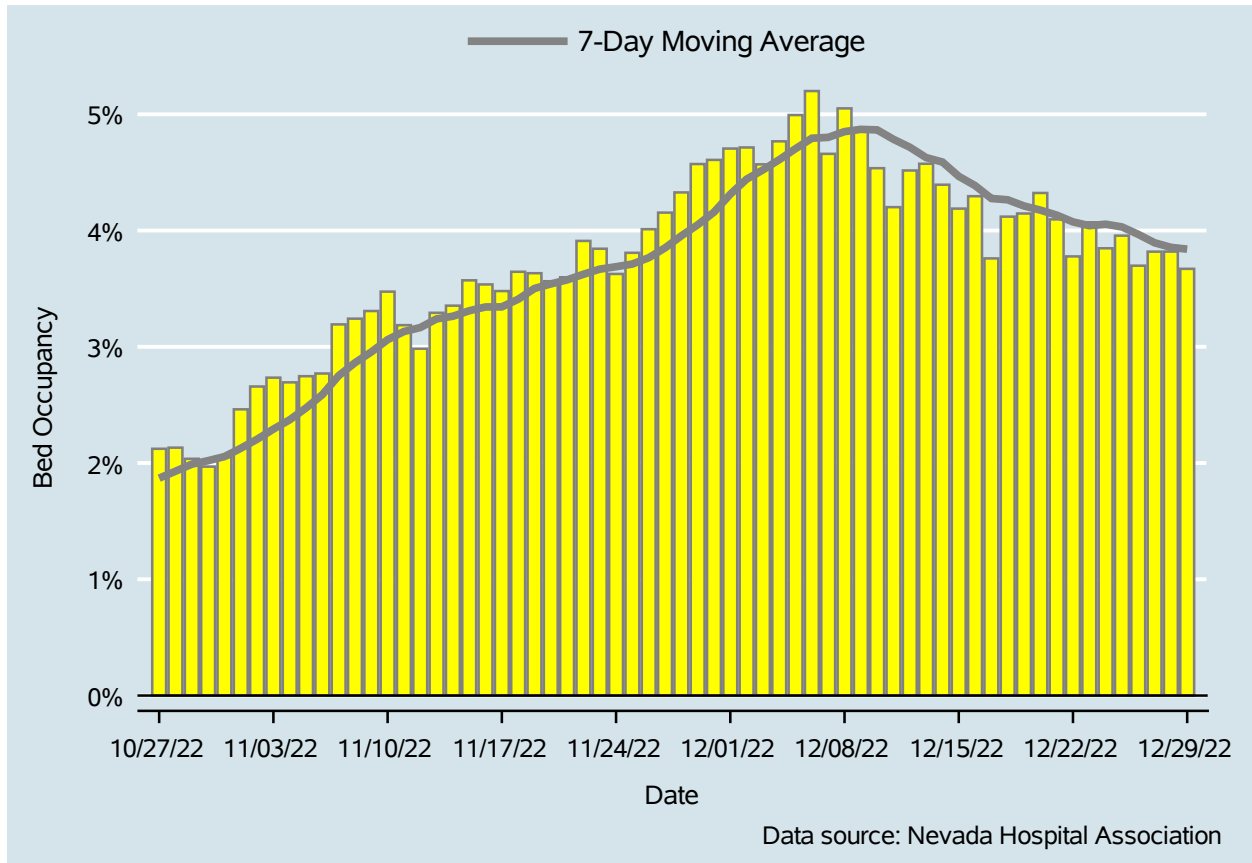


Table 3: Percent of Bed Occupancy per Day, Clark County, NV

Date	Bed Occupancy Per Day	7-Day Moving Average
Dec 16	4.30%	4.39%
Dec 17	3.76%	4.28%
Dec 18	4.12%	4.26%
Dec 19	4.15%	4.21%
Dec 20	4.32%	4.18%
Dec 21	4.10%	4.13%
Dec 22	3.78%	4.07%
Dec 23	4.07%	4.04%
Dec 24	3.85%	4.05%
Dec 25	3.96%	4.03%
Dec 26	3.70%	3.97%
Dec 27	3.82%	3.90%
Dec 28	3.82%	3.86%
Dec 29	3.67%	3.84%

# COVID-19 Deaths

Clark County, NV

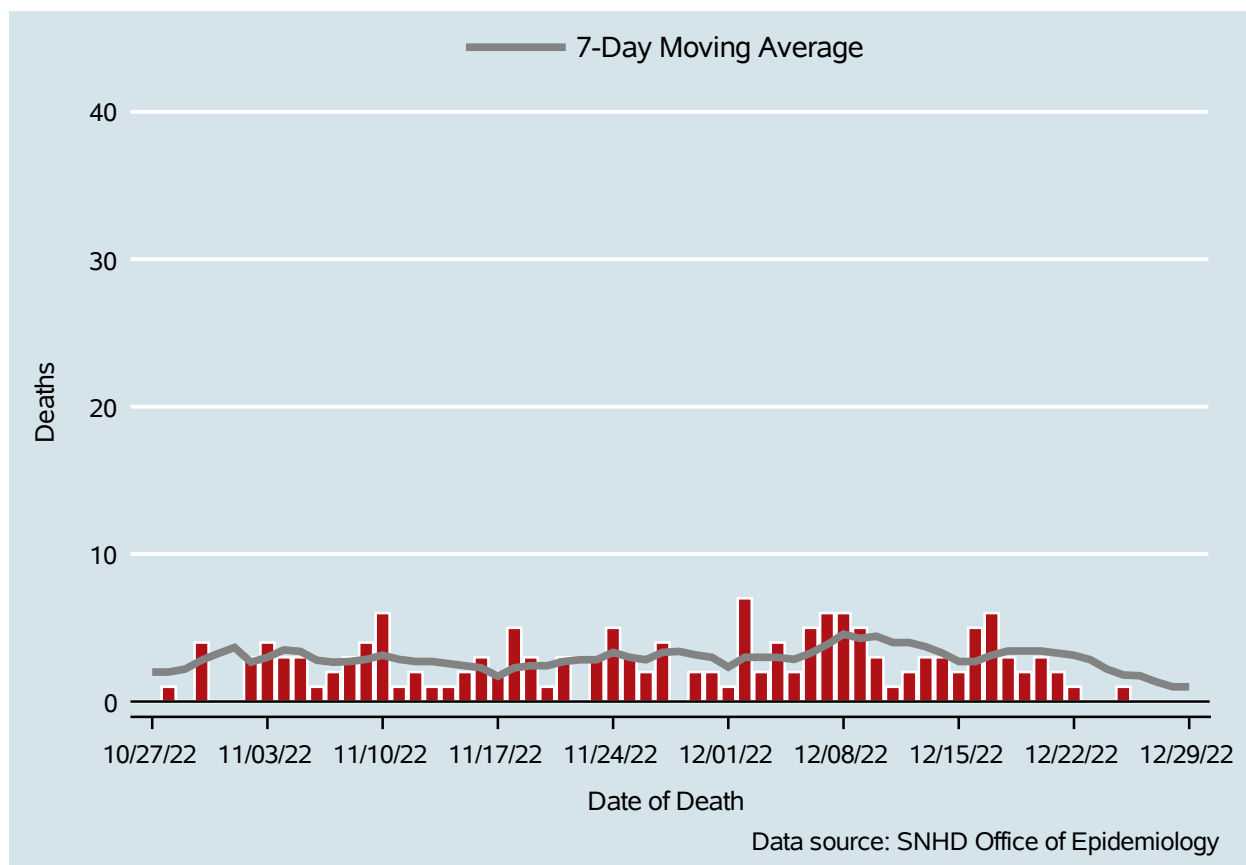


Table 4: COVID-19 Deaths per Day, Clark County, NV

Date	Deaths Per Day	7-Day Moving Average
Dec 16	5	2.7
Dec 17	6	3.1
Dec 18	3	3.4
Dec 19	2	3.4
Dec 20	3	3.4
Dec 21	2	3.3
Dec 22	1	3.1
Dec 23	.	2.8
Dec 24	.	2.2
Dec 25	1	1.8
Dec 26	.	1.8
Dec 27	.	1.3
Dec 28	.	1.0
Dec 29	.	1.0

## 7-Day Average of Daily New Cases per 100K, by Age Group (Years)

Clark County, NV

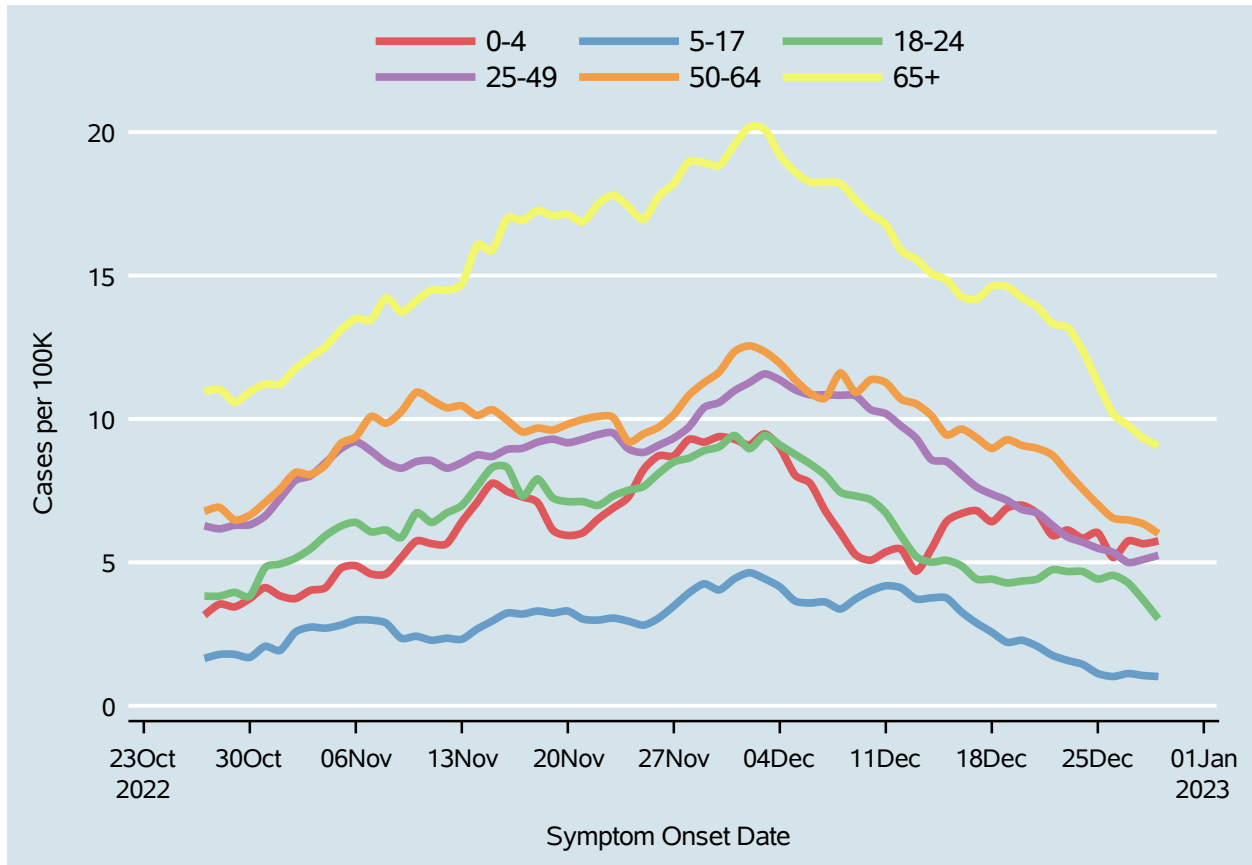
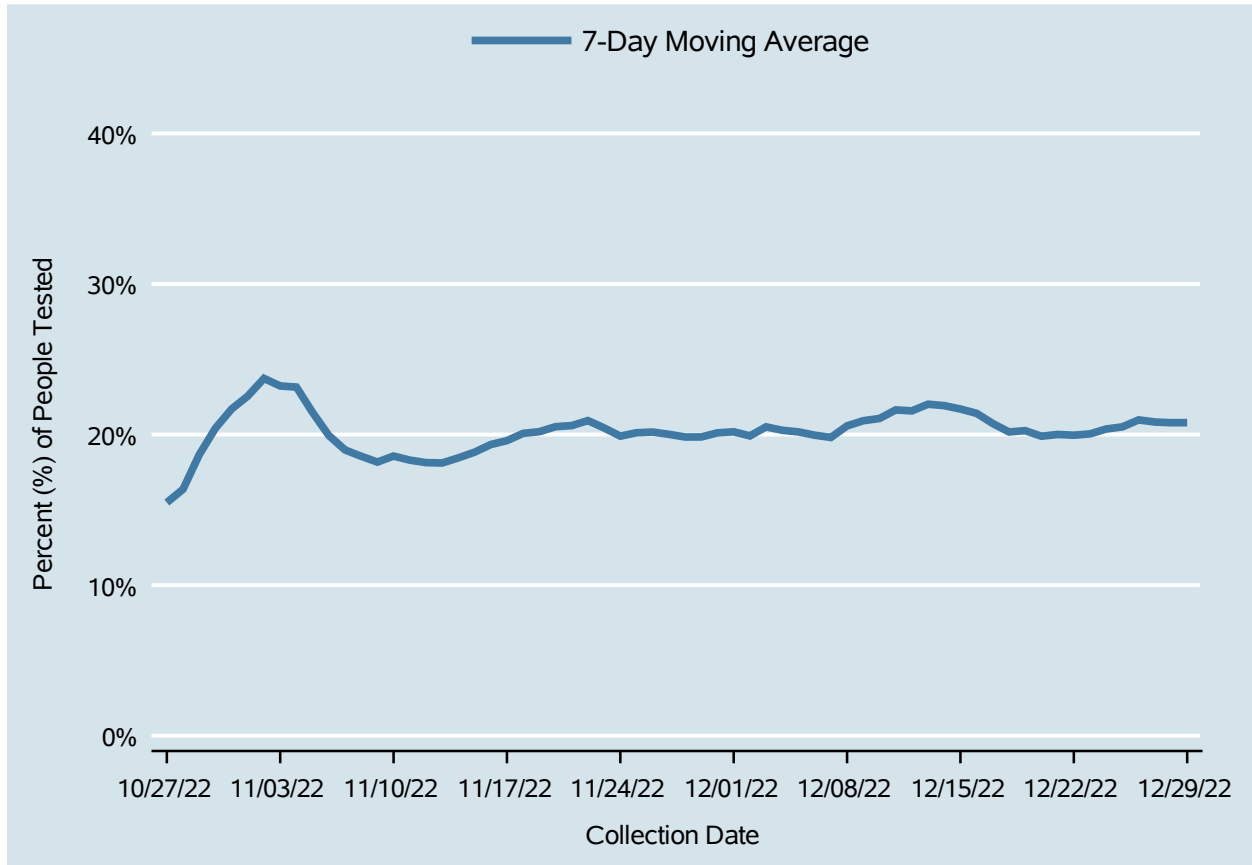


Table 5: 7-Day Average of Daily New Cases per 100K, by Age Group (Years)

Date	0-4	5-17	18-24	25-49	50-64	65+
Dec 16	6.7	3.3	4.9	8.1	9.6	14.3
Dec 17	6.8	2.9	4.4	7.6	9.3	14.2
Dec 18	6.4	2.6	4.4	7.4	9.0	14.6
Dec 19	6.9	2.2	4.3	7.2	9.3	14.6
Dec 20	7.0	2.3	4.3	6.8	9.1	14.2
Dec 21	6.7	2.1	4.4	6.7	9.0	13.9
Dec 22	5.9	1.8	4.7	6.3	8.7	13.3
Dec 23	6.1	1.6	4.7	5.9	8.1	13.2
Dec 24	5.8	1.4	4.7	5.7	7.6	12.4
Dec 25	6.0	1.1	4.4	5.5	7.0	11.3
Dec 26	5.2	1.0	4.5	5.4	6.5	10.2
Dec 27	5.7	1.1	4.3	5.0	6.5	9.8
Dec 28	5.7	1.1	3.7	5.1	6.3	9.3
Dec 29	5.7	1.0	3.0	5.2	6.0	9.1

# Percent of People Receiving COVID-19 PCR Tests Who Have Positive Results

Clark County, NV



*Report prepared by: Ying Zhang, PhD, MPH (Office of Epidemiology) and Lei Zhang, MS (Office of Informatics)*