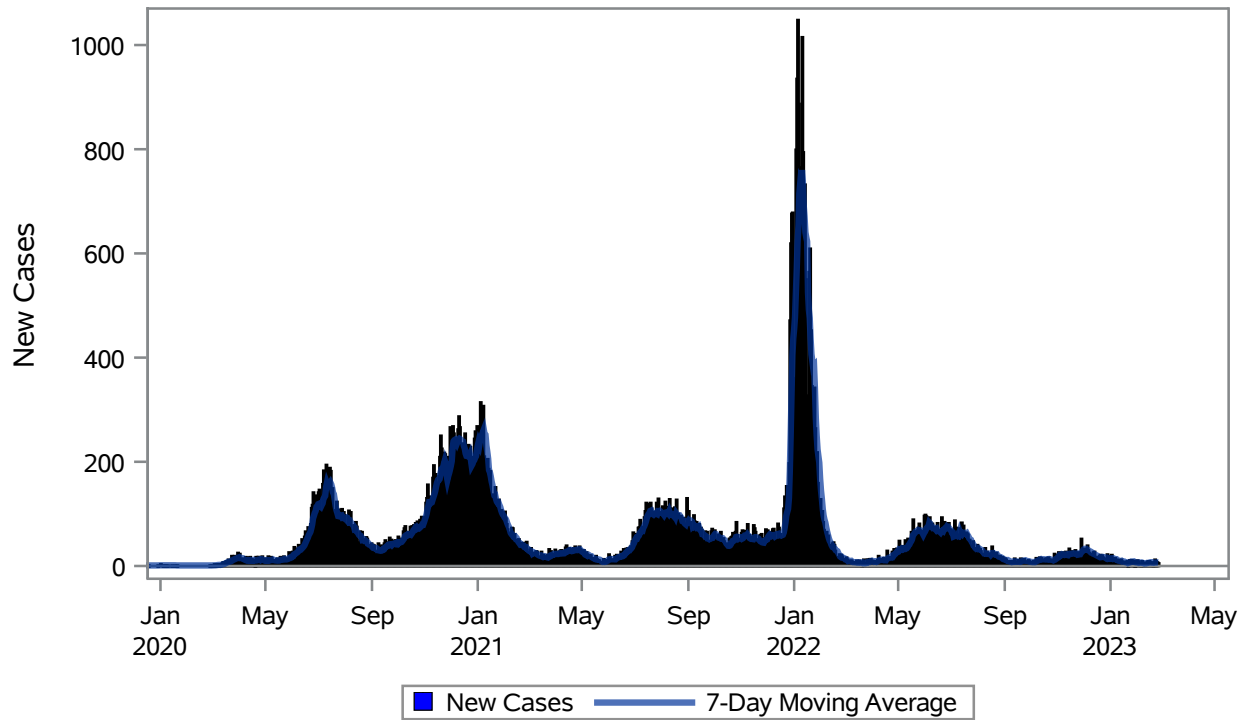


COVID19 Cases for North Las Vegas, 7-Day Moving Average



Investigations are ongoing; data are subject to change.

Reporting through 27FEB2023

North Las Vegas zip codes include 89030, 89031, 89032, 89033, 89036, 89081, 89084, 89085, 89086, 89087.

Table 1: New COVID19 Cases and 7-Day Moving Average in North Las Vegas, Previous Two Weeks

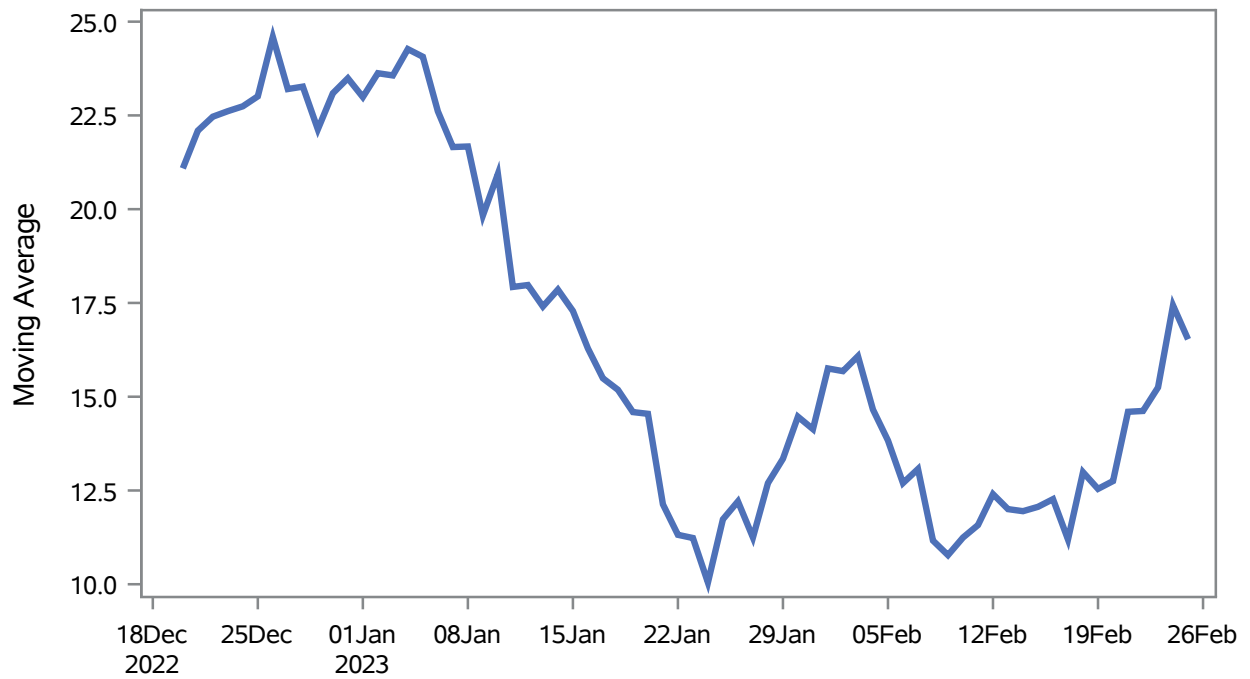
Date (Daily)	New Cases	7-Day Moving Average
14FEB2023	9	6.29
15FEB2023	8	6.71
16FEB2023	7	7.14
17FEB2023	4	6.86
18FEB2023	6	7.14
19FEB2023	2	6.43
20FEB2023	7	6.14
21FEB2023	12	6.57
22FEB2023	9	6.71
23FEB2023	7	6.71
24FEB2023	6	7.00
25FEB2023	5	6.86

Note1: Event Date is calculated as follows based on completed information:
1) Disease onset date 2) Disease diagnosis date 3) Lab result collection date 4) Report date to SNHD.

**Investigations are ongoing; data are subject to change.
Reporting through 27FEB2023**

North Las Vegas zip codes include 89030, 89031, 89032, 89033, 89036, 89081, 89084, 89085, 89086, 89087.

Percent of People Receiving COVID-19 Viral Tests Who Have Positive Results in North Las Vegas



Investigations are ongoing; data are subject to change.

Reporting through 27FEB2023

North Las Vegas zip codes include 89030, 89031, 89032, 89033, 89036, 89081, 89084, 89085, 89086, 89087.

Table 2: Percent of People Receiving COVID-19 Viral Tests Who Have Positive Results in North Las Vegas

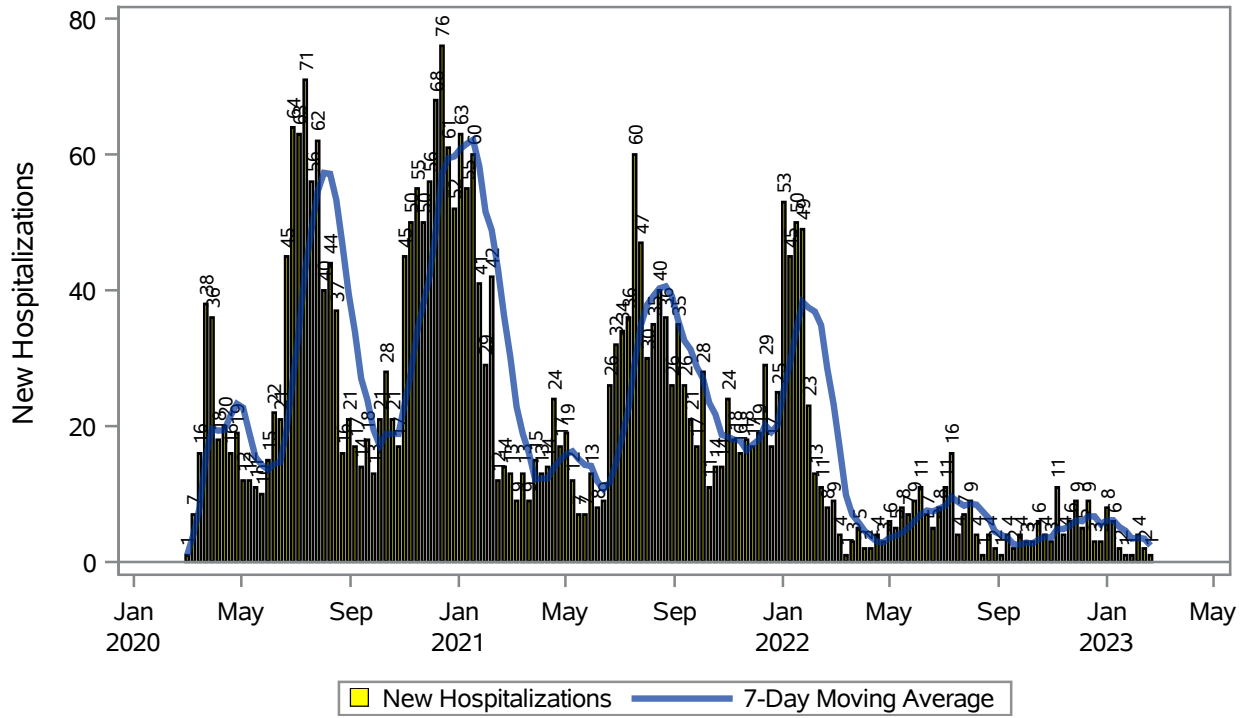
Collection Date	Positive	Negative	Equivocal	Total	% Positivity	7-Day Moving Average
11FEB2023	6	45		51	11.76	11.6
12FEB2023	8	47		55	14.55	12.4
13FEB2023	6	67		73	8.22	12.0
14FEB2023	13	147		160	8.13	11.9
15FEB2023	14	69		83	16.87	12.1
16FEB2023	14	77		91	15.38	12.3
17FEB2023	5	140		145	3.45	11.2
18FEB2023	9	28		37	24.32	13.0
19FEB2023	4	31		35	11.43	12.5
20FEB2023	6	56		62	9.68	12.8
21FEB2023	20	75		95	21.05	14.6
22FEB2023	16	78		94	17.02	14.6
23FEB2023	18	73		91	19.78	15.2
24FEB2023	18	78		96	18.75	17.4
25FEB2023	9	41		50	18.00	16.5

Note: Testing Data includes a 3 day delay

**Investigations are ongoing; data are subject to change.
Reporting through 27FEB2023**

North Las Vegas zip codes include 89030, 89031, 89032, 89033, 89036, 89081, 89084, 89085, 89086, 89087.

COVID19 Hospitalizations for North Las Vegas, 7-Day Moving Average



Investigations are ongoing; data are subject to change.

Reporting through 27FEB2023

North Las Vegas zip codes include 89030, 89031, 89032, 89033, 89036, 89081, 89084, 89085, 89086, 89087.

Table 3: New COVID19-Related Hospitalizations and 7-Day Moving Average in North Las Vegas, previous month

Week	Hospitalizations	7-Day Moving Average
29JAN2023	1	3.43
05FEB2023	4	3.57
12FEB2023	2	3.43
19FEB2023	1	2.43

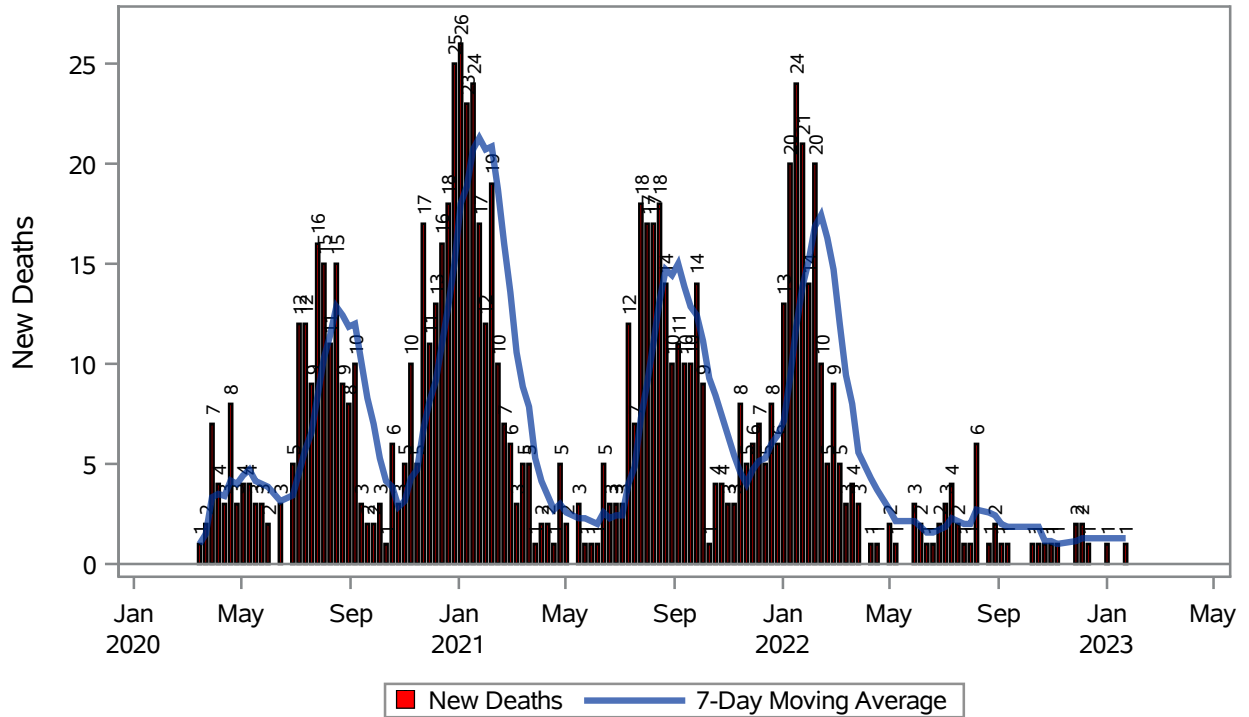
Note1: Admission Date is calculated as follows based on completed information:
A) COVID19 Case is hospitalized B) COVID19 Case has a hospital admission date.

If admission date is missing, then the following is substituted temporarily, in order:
1) Disease onset date 2) Disease diagnosis date 3) Lab result collection date 4) Report date to SNHD.

**Investigations are ongoing; data are subject to change.
Reporting through 27FEB2023**

North Las Vegas zip codes include 89030, 89031, 89032, 89033, 89036, 89081, 89084, 89085, 89086, 89087.

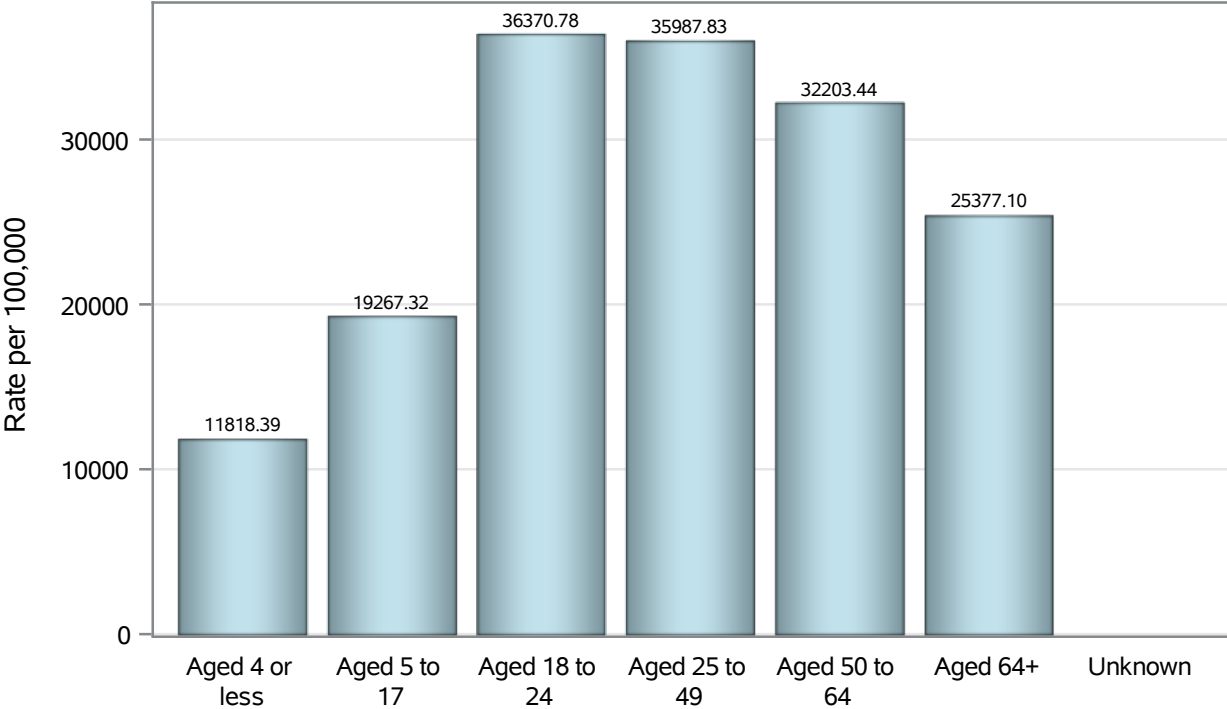
COVID19 Deaths for North Las Vegas, 7-Day Moving Average



Investigations are ongoing; data are subject to change.
 Reporting through 27FEB2023

North Las Vegas zip codes include 89030, 89031, 89032, 89033, 89036, 89081, 89084, 89085, 89086, 89087.

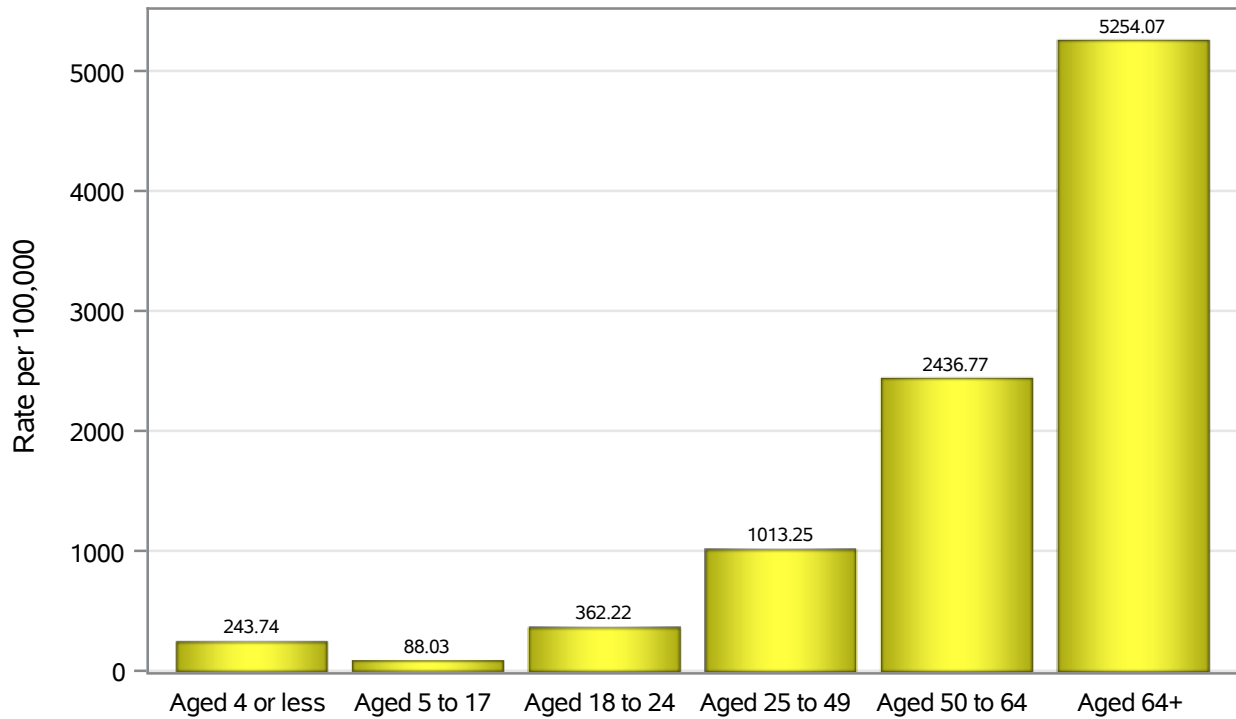
Case Age Rates in North Las Vegas



Investigations are ongoing; data are subject to change.
Reporting through 27FEB2023

North Las Vegas zip codes include 89030, 89031, 89032, 89033, 89036, 89081, 89084, 89085, 89086, 89087.

Hospitalization Age Rates in North Las Vegas

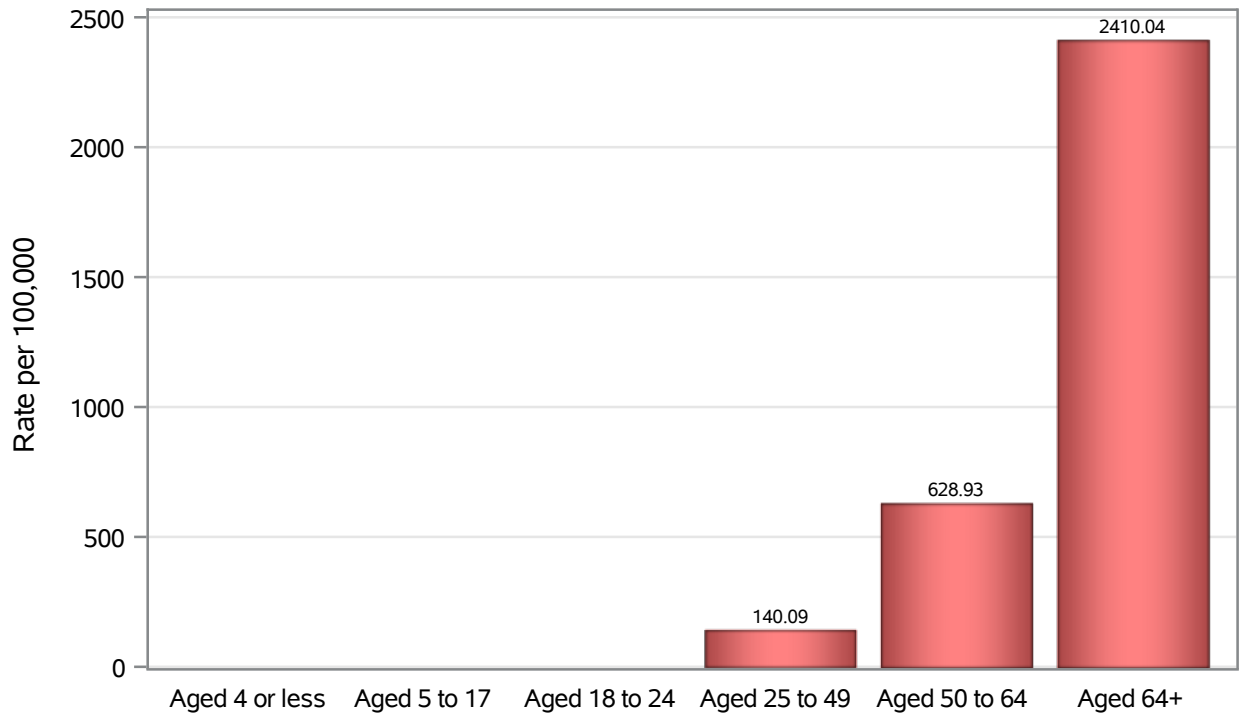


Investigations are ongoing; data are subject to change.

Reporting through 27FEB2023

North Las Vegas zip codes include 89030, 89031, 89032, 89033, 89036, 89081, 89084, 89085, 89086, 89087.

Death Age Rates in North Las Vegas



Investigations are ongoing; data are subject to change.

Reporting through 27FEB2023

North Las Vegas zip codes include 89030, 89031, 89032, 89033, 89036, 89081, 89084, 89085, 89086, 89087.

Table 5: Age and COVID19 in North Las Vegas

Case Status	Age Categories	N	%	Population	Rate per 100,000
Cases	Aged 4 or less	2085	3.1	17,642	11818
	Aged 5 to 17	9630	14.2	49,981	19267
	Aged 18 to 24	8334	12.3	22,914	36371
	Aged 25 to 49	29799	44.0	82,803	35988
	Aged 50 to 64	11828	17.5	36,729	32203
	Aged 64+	6023	8.9	23,734	25377
	Unknown	15	0.0	.	.
Hospitalizations	Aged 4 or less	43	1.4	17,642	243.74
	Aged 5 to 17	44	1.4	49,981	88.03
	Aged 18 to 24	83	2.6	22,914	362.22
	Aged 25 to 49	839	26.6	82,803	1013.2
	Aged 50 to 64	895	28.4	36,729	2436.8
	Aged 64+	1247	39.6	23,734	5254.1
	Deaths	Aged 4 or less	3	0.3	17,642
Aged 5 to 17		1	0.1	49,981	.
Aged 18 to 24		2	0.2	22,914	.
Aged 25 to 49		116	12.5	82,803	140.09
Aged 50 to 64		231	25.0	36,729	628.93
Aged 64+		572	61.8	23,734	2410.0

Note1: Population data source for calculating rate estimates: U.S. Census Bureau, ACS 5-year estimate.

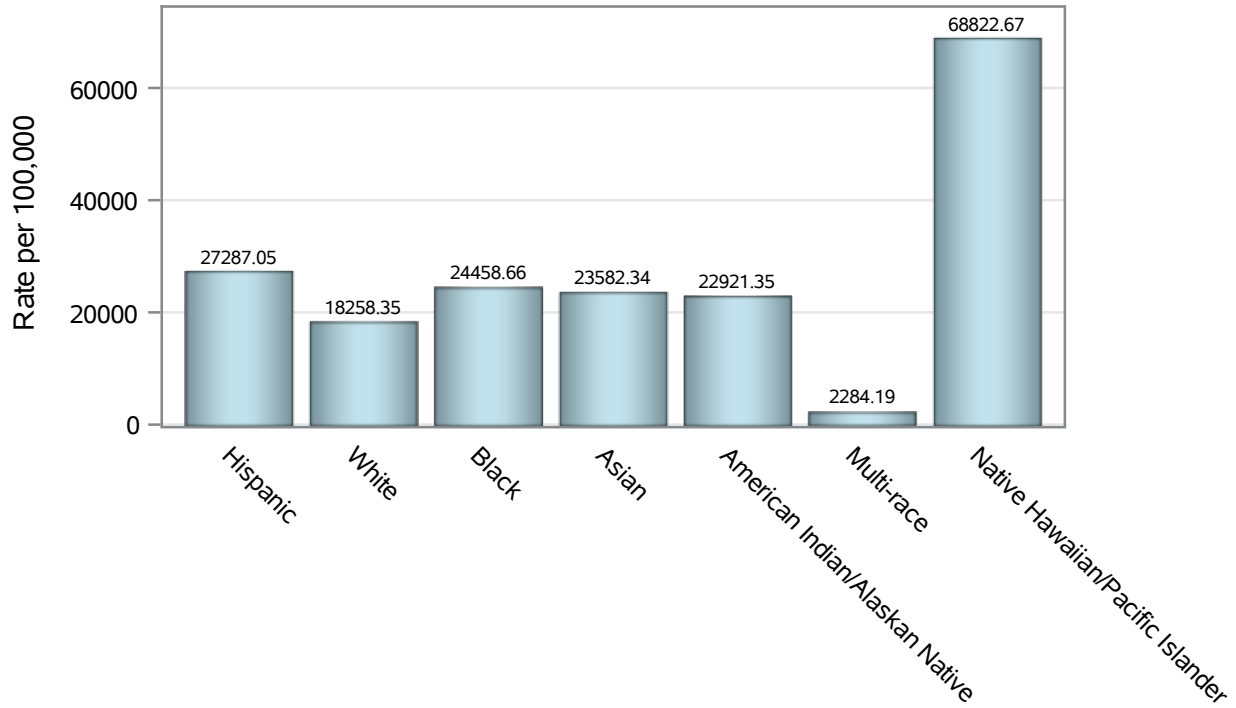
Note2: Rates for categories with fewer than 12 cases are suppressed due to high relative standard error.

Note3: Hospitalizations are regardless of deceased status; Deaths are regardless of hospitalization status

**Investigations are ongoing; data are subject to change.
Reporting through 27FEB2023**

North Las Vegas zip codes include 89030, 89031, 89032, 89033, 89036, 89081, 89084, 89085, 89086, 89087.

Case Race/Ethnicity Rates in North Las Vegas

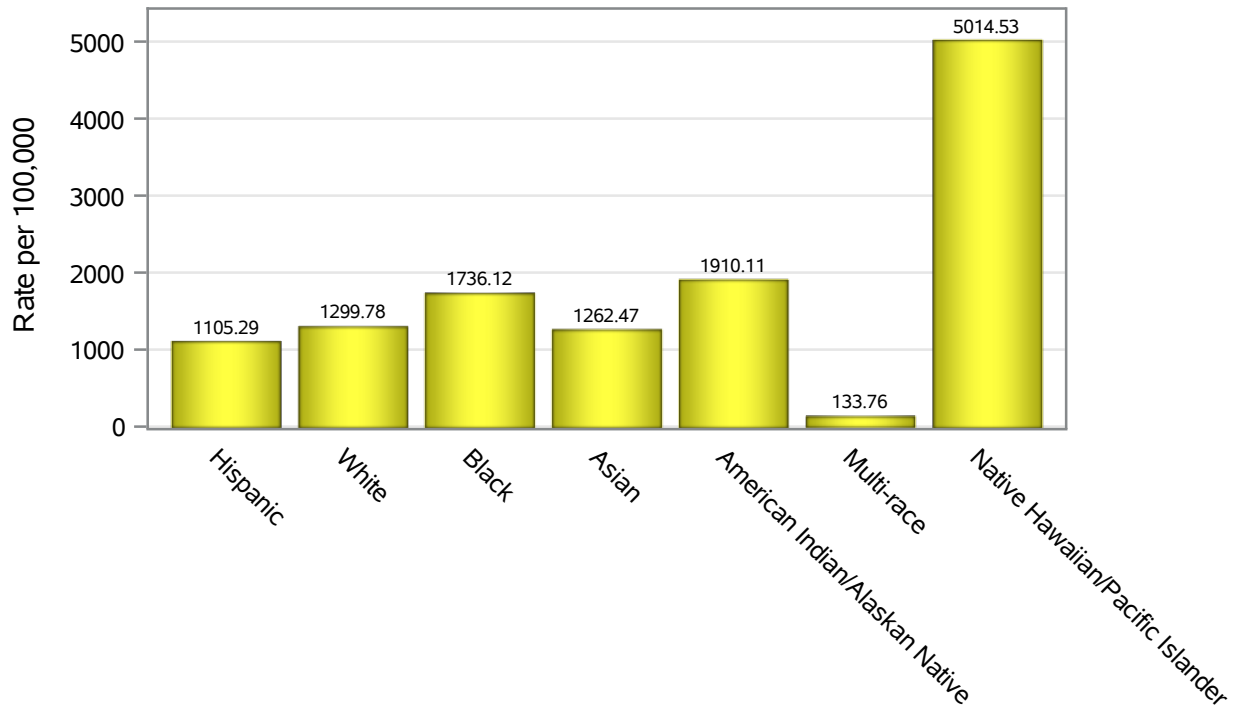


Investigations are ongoing; data are subject to change.

Reporting through 27FEB2023

North Las Vegas zip codes include 89030, 89031, 89032, 89033, 89036, 89081, 89084, 89085, 89086, 89087.

Hospitalization Race/Ethnicity Rates in North Las Vegas

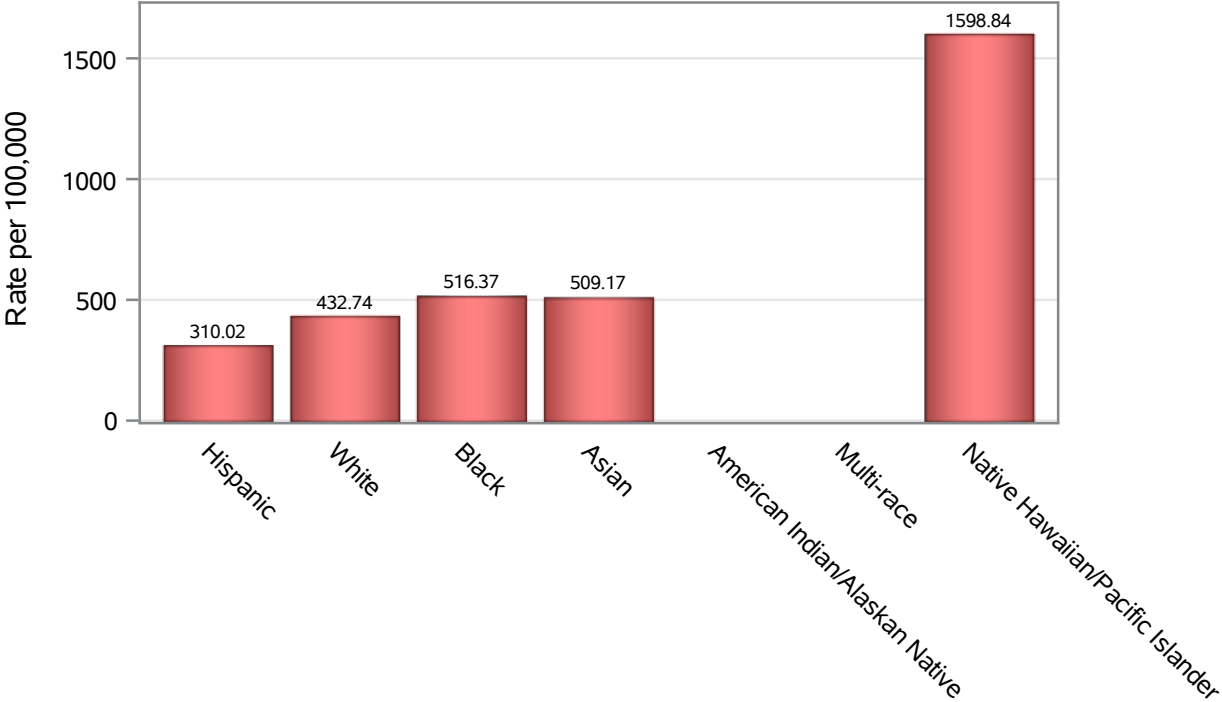


Investigations are ongoing; data are subject to change.

Reporting through 27FEB2023

North Las Vegas zip codes include 89030, 89031, 89032, 89033, 89036, 89081, 89084, 89085, 89086, 89087.

Death Race/Ethnicity Rates in North Las Vegas



Investigations are ongoing; data are subject to change.

Reporting through 27FEB2023

North Las Vegas zip codes include 89030, 89031, 89032, 89033, 89036, 89081, 89084, 89085, 89086, 89087.

Table 6: Race/Ethnicity and COVID19 in North Las Vegas

Case Status	Race Ethnicity Categories	N	%	Population	Rate per 100,000
Cases	Hispanic	26317	38.9	96,445	27287
	White	11603	17.1	63,549	18258
	Black	11510	17.0	47,059	24459
	Asian	3381	5.0	14,337	23582
	American Indian/Alaskan Native	204	0.3	890	22921
	Multi-race	222	0.3	9,719	2284.2
	Native Hawaiian/Pacific Islander	947	1.4	1,376	68823
	Unknown	13530	20.0	.	.
Hospitalizations	Hispanic	1066	33.8	96,445	1105.3
	White	826	26.2	63,549	1299.8
	Black	817	25.9	47,059	1736.1
	Asian	181	5.7	14,337	1262.5
	American Indian/Alaskan Native	17	0.5	890	1910.1
	Multi-race	13	0.4	9,719	133.76
	Native Hawaiian/Pacific Islander	69	2.2	1,376	5014.5
	Unknown	162	5.1	.	.
Deaths	Hispanic	299	32.3	96,445	310.02
	White	275	29.7	63,549	432.74
	Black	243	26.3	47,059	516.37
	Asian	73	7.9	14,337	509.17
	American Indian/Alaskan Native	6	0.6	890	.
	Multi-race	7	0.8	9,719	.
	Native Hawaiian/Pacific Islander	22	2.4	1,376	1598.8

Note1: Population data source for calculating rate estimates: U.S. Census Bureau, ACS 5-year estimate.

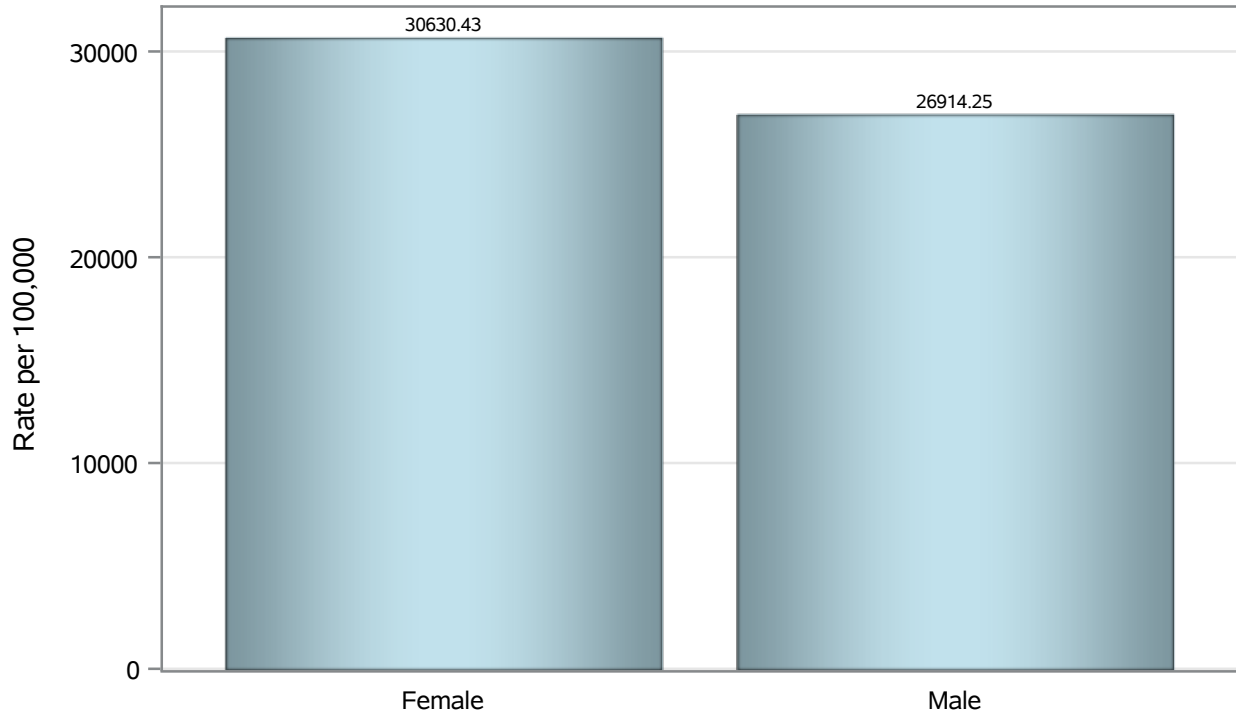
Note2: Rates for categories with fewer than 12 cases are suppressed due to high relative standard error.

Note3: Hospitalizations are regardless of deceased status; Deaths are regardless of hospitalization status

**Investigations are ongoing; data are subject to change.
Reporting through 27FEB2023**

North Las Vegas zip codes include 89030, 89031, 89032, 89033, 89036, 89081, 89084, 89085, 89086, 89087.

Case Birth Sex Rates in North Las Vegas

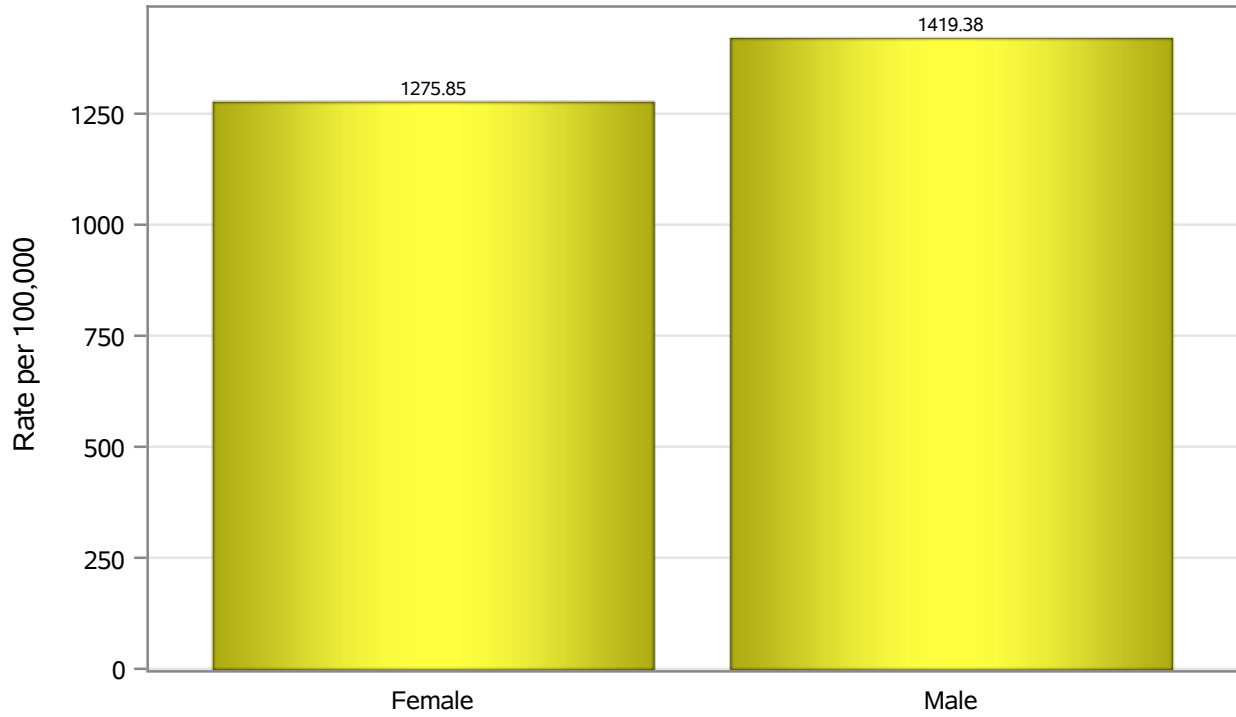


Investigations are ongoing; data are subject to change.

Reporting through 27FEB2023

North Las Vegas zip codes include 89030, 89031, 89032, 89033, 89036, 89081, 89084, 89085, 89086, 89087.

Hospitalization Birth Sex Rates in North Las Vegas

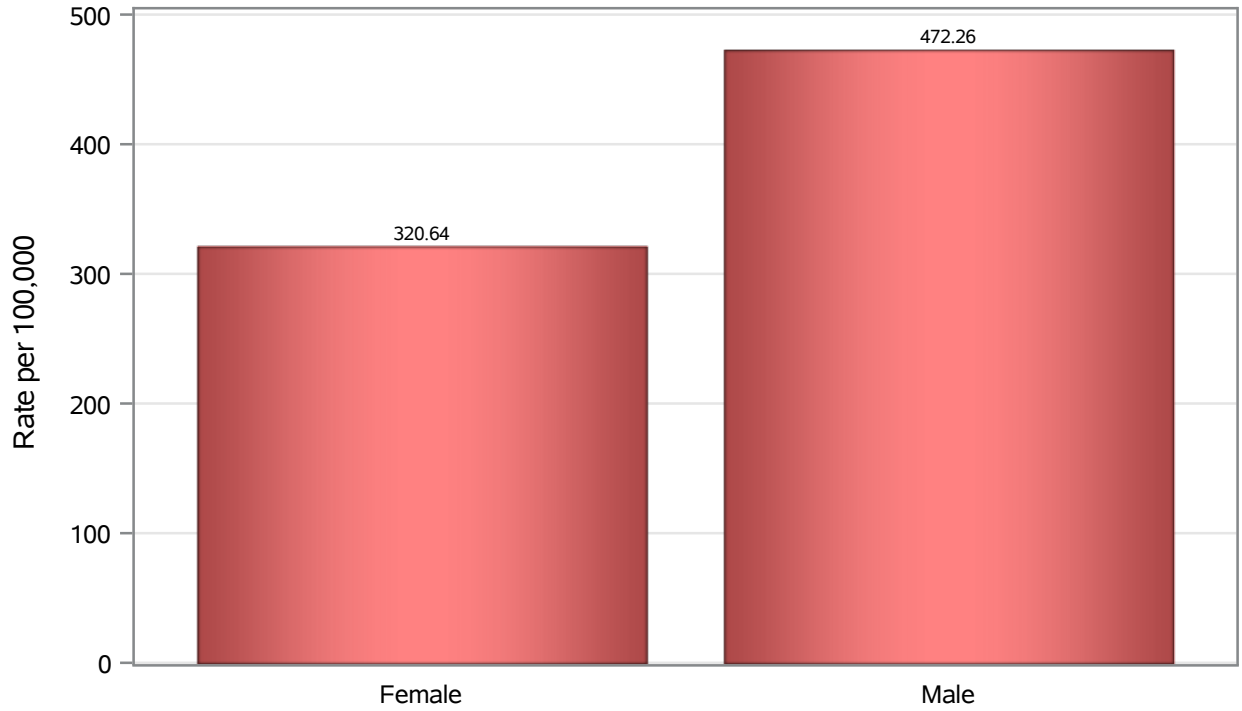


Investigations are ongoing; data are subject to change.

Reporting through 27FEB2023

North Las Vegas zip codes include 89030, 89031, 89032, 89033, 89036, 89081, 89084, 89085, 89086, 89087.

Death Birth Sex Rates in North Las Vegas



Investigations are ongoing; data are subject to change.

Reporting through 27FEB2023

North Las Vegas zip codes include 89030, 89031, 89032, 89033, 89036, 89081, 89084, 89085, 89086, 89087.

Table 7: Birth Sex and COVID19 in North Las Vegas

Case Status	Birth Sex Categories	N	%	Population	Rate per 100,000
Cases	Female	36396	53.7	118823	30630
	Male	30946	45.7	114980	26914
	Unknown	372	0.5	.	.
Hospitalizations	Female	1516	48.1	118823	1275.8
	Male	1632	51.8	114980	1419.4
	Unknown	3	0.1	.	.
Deaths	Female	381	41.2	118823	320.64
	Male	543	58.7	114980	472.26
	Unknown	1	0.1	.	.

Note1: Population data source for calculating rate estimates: U.S. Census Bureau, ACS 5-year estimate.

Note2: Rates for categories with fewer than 12 cases are suppressed due to high relative standard error.

Note3: Hospitalizations are regardless of deceased status; Deaths are regardless of hospitalization status

**Investigations are ongoing; data are subject to change.
Reporting through 27FEB2023**

North Las Vegas zip codes include 89030, 89031, 89032, 89033, 89036, 89081, 89084, 89085, 89086, 89087.