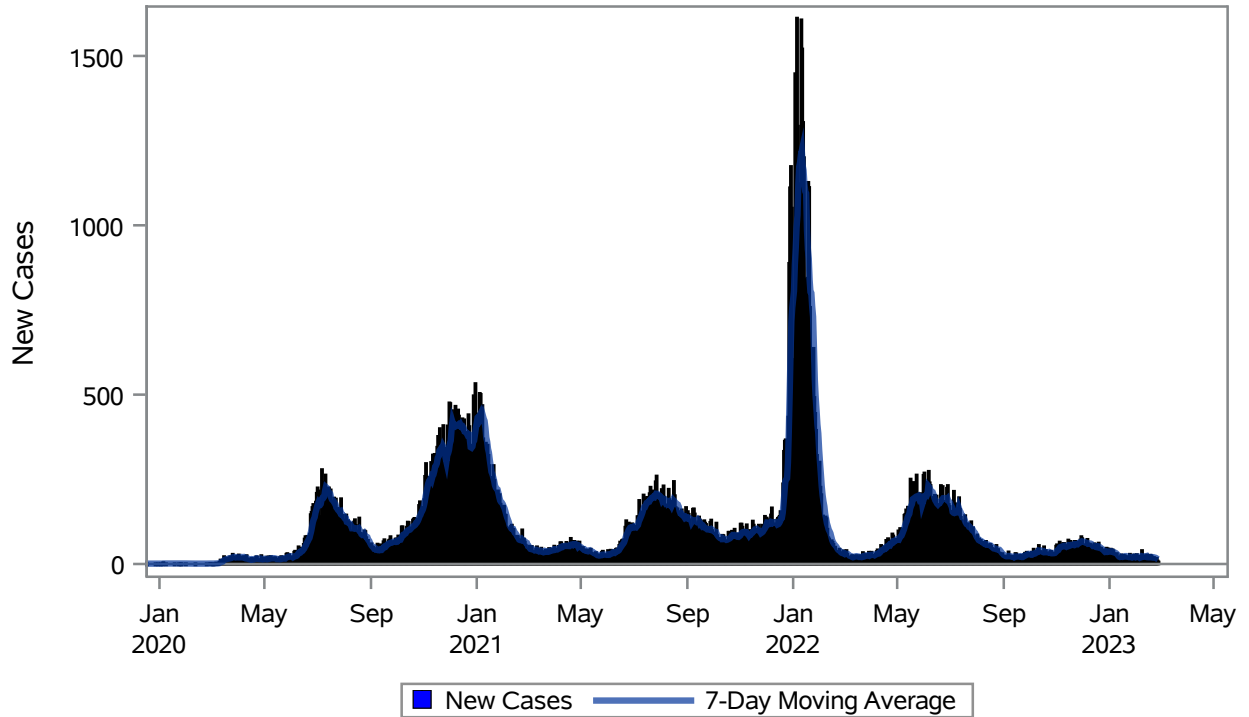


### COVID19 Cases for Henderson, 7-Day Moving Average



Investigations are ongoing; data are subject to change.

Reporting through 27FEB2023

Henderson zip codes include 89002, 89011, 89012, 89014, 89015, 89044, 89052, 89074, 89119, 89120, 89122, 89123, 89124, 89183.

**Table 1: New COVID19 Cases and 7-Day Moving Average in Henderson, Previous Two Weeks**

Date (Daily)	New Cases	7-Day Moving Average
14FEB2023	15	20.00
15FEB2023	17	19.71
16FEB2023	18	19.71
17FEB2023	26	19.86
18FEB2023	23	20.86
19FEB2023	16	20.29
20FEB2023	19	19.14
21FEB2023	19	19.71
22FEB2023	12	19.00
23FEB2023	14	18.43
24FEB2023	17	17.14
25FEB2023	9	15.14

---

Note1: Event Date is calculated as follows based on completed information:  
1) Disease onset date 2) Disease diagnosis date 3) Lab result collection date 4) Report date to SNHD.

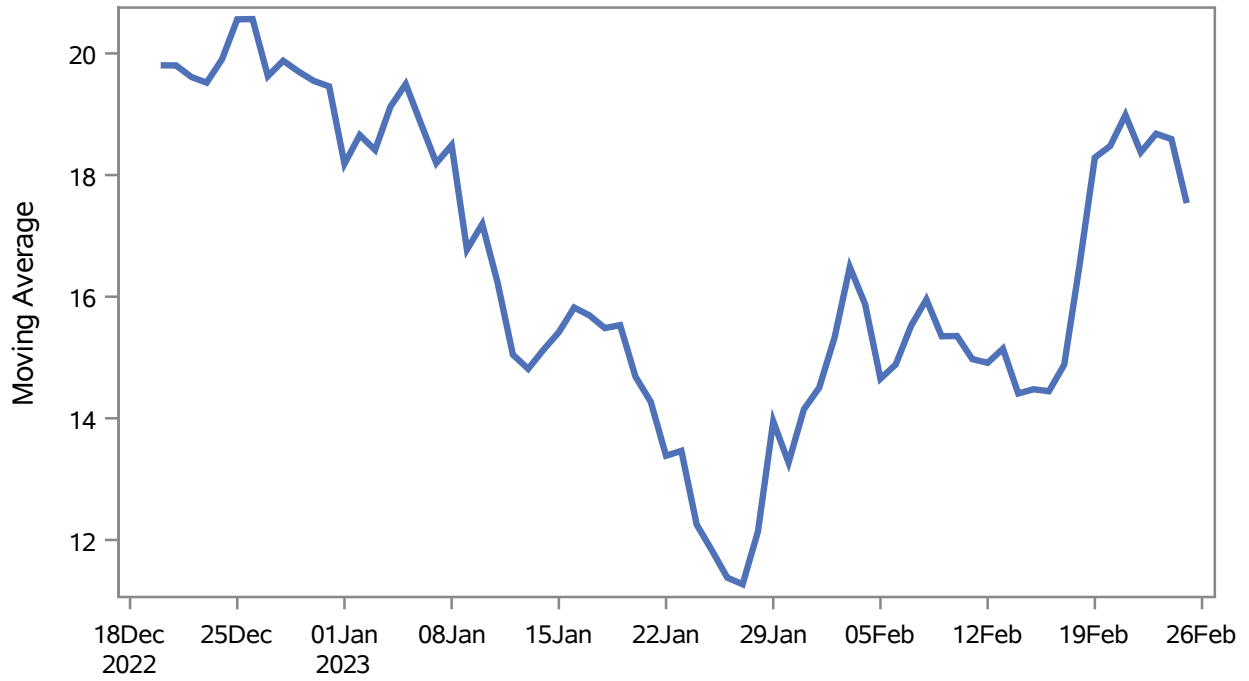
---

**Investigations are ongoing; data are subject to change.**

**Reporting through 27FEB2023**

**Henderson zip codes include 89002, 89011, 89012, 89014, 89015, 89044, 89052, 89074, 89119, 89120, 89122, 89123, 89124, 89183.**

### Percent of People Receiving COVID-19 Viral Tests Who Have Positive Results in Henderson



Investigations are ongoing; data are subject to change.

Reporting through 27FEB2023

Henderson zip codes include 89002, 89011, 89012, 89014, 89015, 89044, 89052, 89074, 89119, 89120, 89122, 89123, 89124, 89183.

**Table 2: Percent of People Receiving COVID-19 Viral Tests Who Have Positive Results in Henderson**

Collection Date	Positive	Negative	Equivocal	Total	% Positivity	7-Day Moving Average
11FEB2023	12	90		102	11.76	15.0
12FEB2023	14	75		89	15.73	14.9
13FEB2023	21	129		150	14.00	15.1
14FEB2023	19	110		129	14.73	14.4
15FEB2023	22	107		129	17.05	14.5
16FEB2023	22	171		193	11.40	14.4
17FEB2023	23	95		118	19.49	14.9
18FEB2023	13	42	1	56	23.21	16.5
19FEB2023	18	46		64	28.13	18.3
20FEB2023	21	116		137	15.33	18.5
21FEB2023	28	125		153	18.30	19.0
22FEB2023	18	123		141	12.77	18.4
23FEB2023	23	146	1	170	13.53	18.7
24FEB2023	27	116		143	18.88	18.6
25FEB2023	16	85		101	15.84	17.5

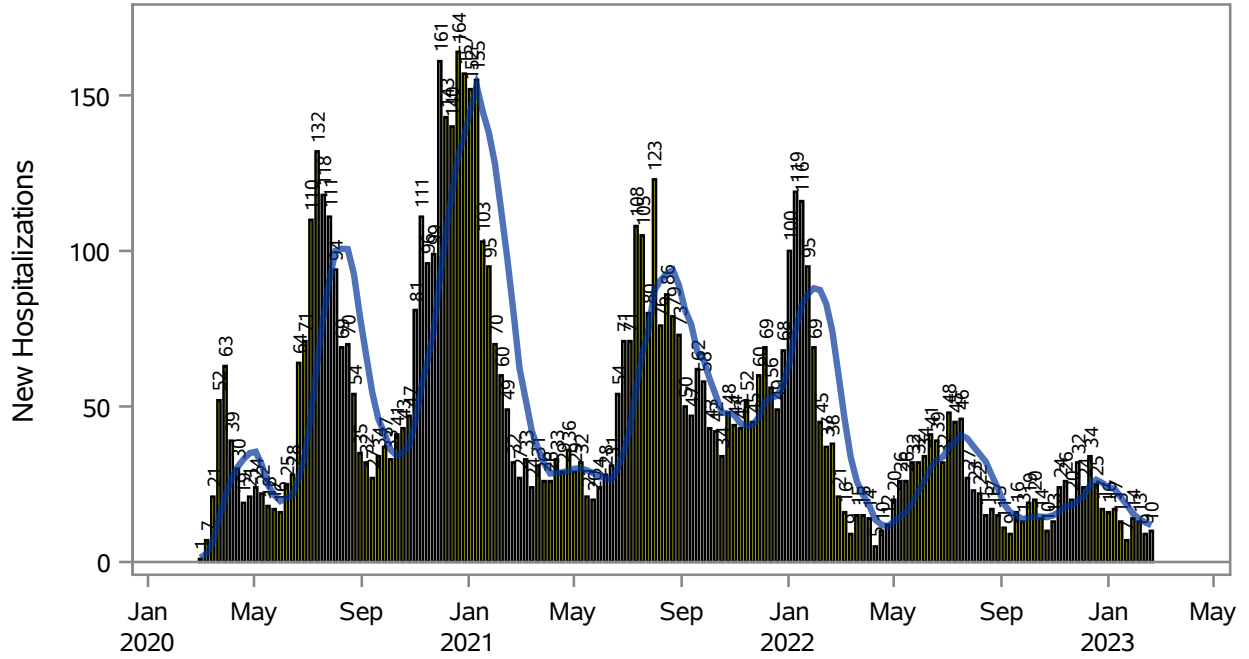
Note: Testing Data includes a 3 day delay

**Investigations are ongoing; data are subject to change.**

**Reporting through 27FEB2023**

**Henderson zip codes include 89002, 89011, 89012, 89014, 89015, 89044, 89052, 89074, 89119, 89120, 89122, 89123, 89124, 89183.**

### COVID19 Hospitalizations for Henderson, 7-Day Moving Average



New Hospitalizations
  7-Day Moving Average

Investigations are ongoing; data are subject to change.

Reporting through 27FEB2023

Henderson zip codes include 89002, 89011, 89012, 89014, 89015, 89044, 89052, 89074, 89119, 89120, 89122, 89123, 89124, 89183.

**Table 3: New COVID19-Related Hospitalizations and 7-Day Moving Average in Henderson, previous month**

Week	Hospitalizations	7-Day Moving Average
29JAN2023	14	15.6
05FEB2023	13	13.9
12FEB2023	9	12.7
19FEB2023	10	11.9

---

Note1: Admission Date is calculated as follows based on completed information:  
A) COVID19 Case is hospitalized B) COVID19 Case has a hospital admission date.

If admission date is missing, then the following is substituted temporarily, in order:  
1) Disease onset date 2) Disease diagnosis date 3) Lab result collection date 4) Report date to SNHD.

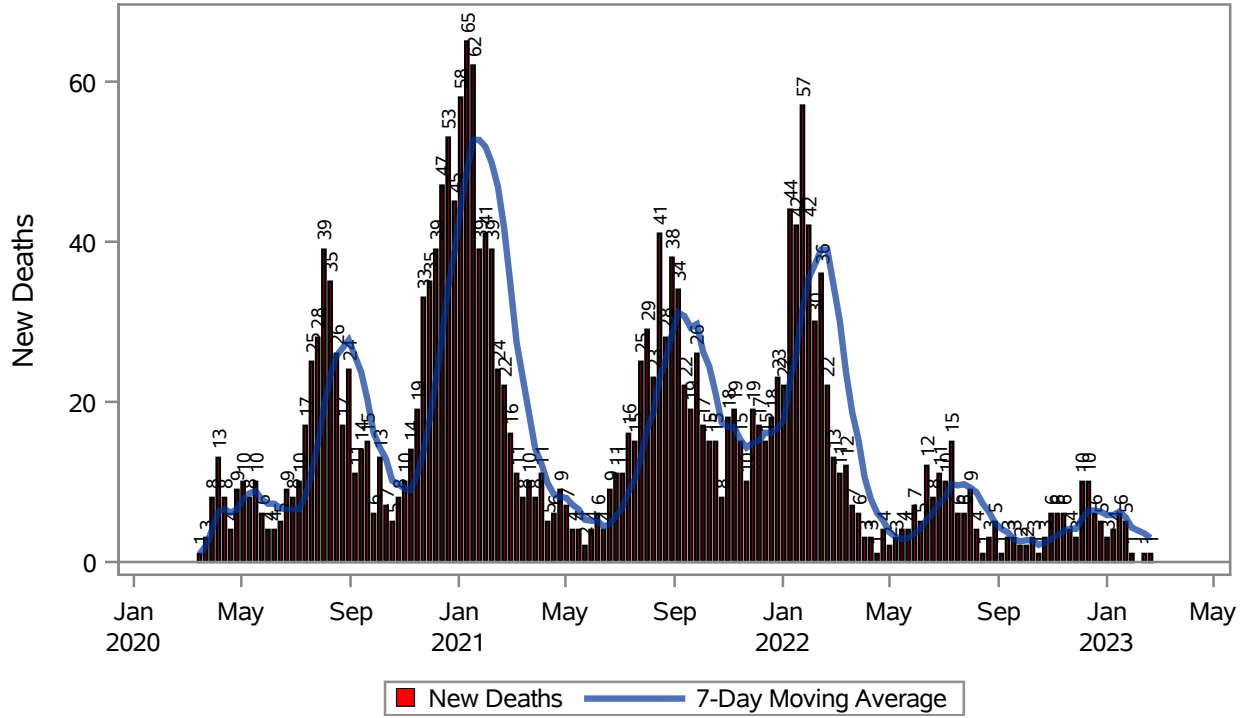
---

**Investigations are ongoing; data are subject to change.**

**Reporting through 27FEB2023**

**Henderson zip codes include 89002, 89011, 89012, 89014, 89015, 89044, 89052, 89074, 89119, 89120, 89122, 89123, 89124, 89183.**

### COVID19 Deaths for Henderson, 7-Day Moving Average



Investigations are ongoing; data are subject to change.

Reporting through 27FEB2023

Henderson zip codes include 89002, 89011, 89012, 89014, 89015, 89044, 89052, 89074, 89119, 89120, 89122, 89123, 89124, 89183.

**Table 4: New COVID19-Related Deaths and 7-Day Moving Average in Henderson, Previous Month**

Week	Deaths	7-Day Moving Average
29JAN2023	1	4.29
12FEB2023	1	3.57
19FEB2023	1	3.00

---

Note1: Date of Death is calculated as follows based on completed information:  
A) COVID19 Case is reported as deceased B) COVID19 Case has a reported date of death.

If date of death is missing, then the following is substituted temporarily, in order:  
1) Disease onset date 2) Disease diagnosis date  
3) Lab result collection date 4) Report date to SNHD.

---

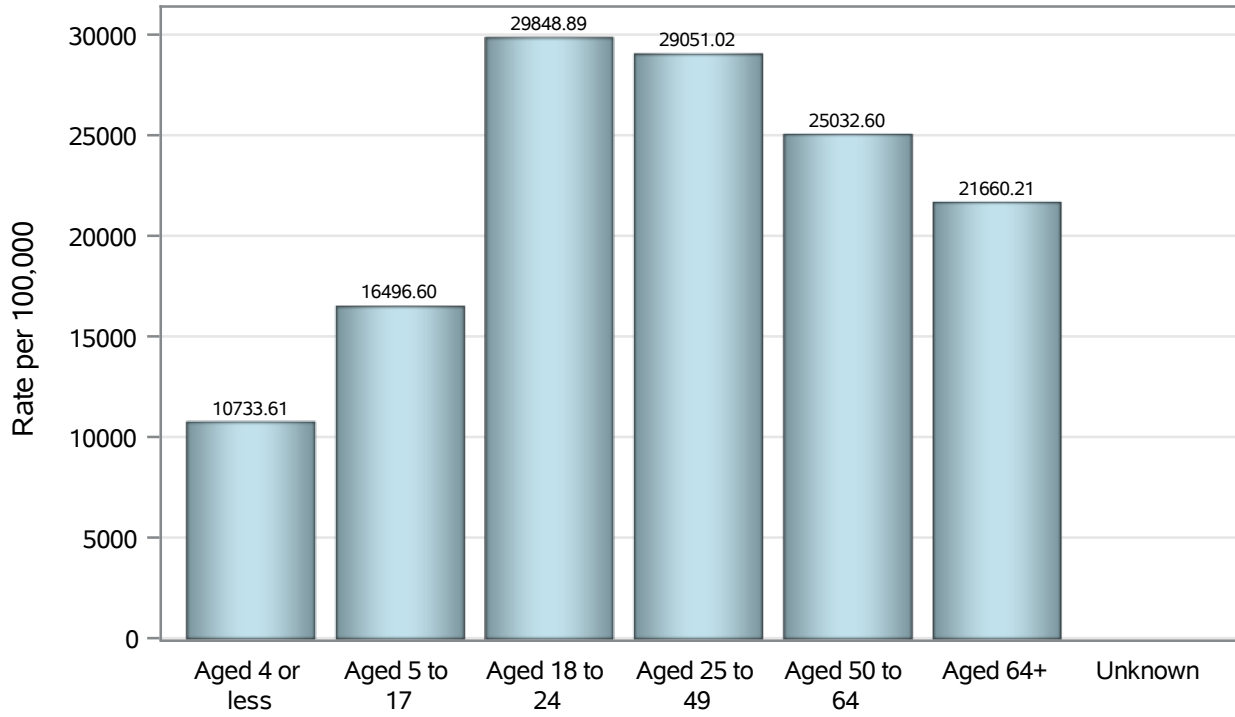
**Investigations are ongoing; data are subject to change.**

**Reporting through 27FEB2023**

**Henderson zip codes include 89002, 89011, 89012, 89014, 89015, 89044, 89052, 89074, 89119, 89120, 89122, 89123, 89124, 89183.**



### Case Age Rates in Henderson

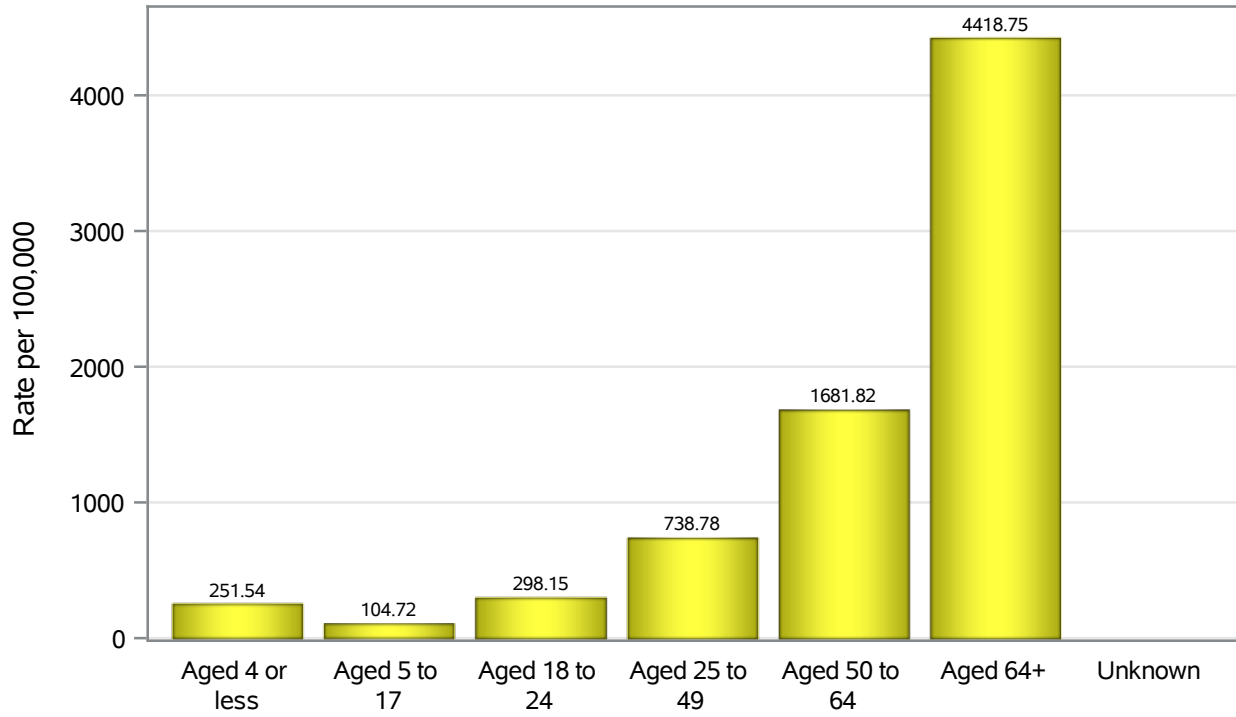


Investigations are ongoing; data are subject to change.

Reporting through 27FEB2023

Henderson zip codes include 89002, 89011, 89012, 89014, 89015, 89044, 89052, 89074, 89119, 89120, 89122, 89123, 89124, 89183.

### Hospitalization Age Rates in Henderson

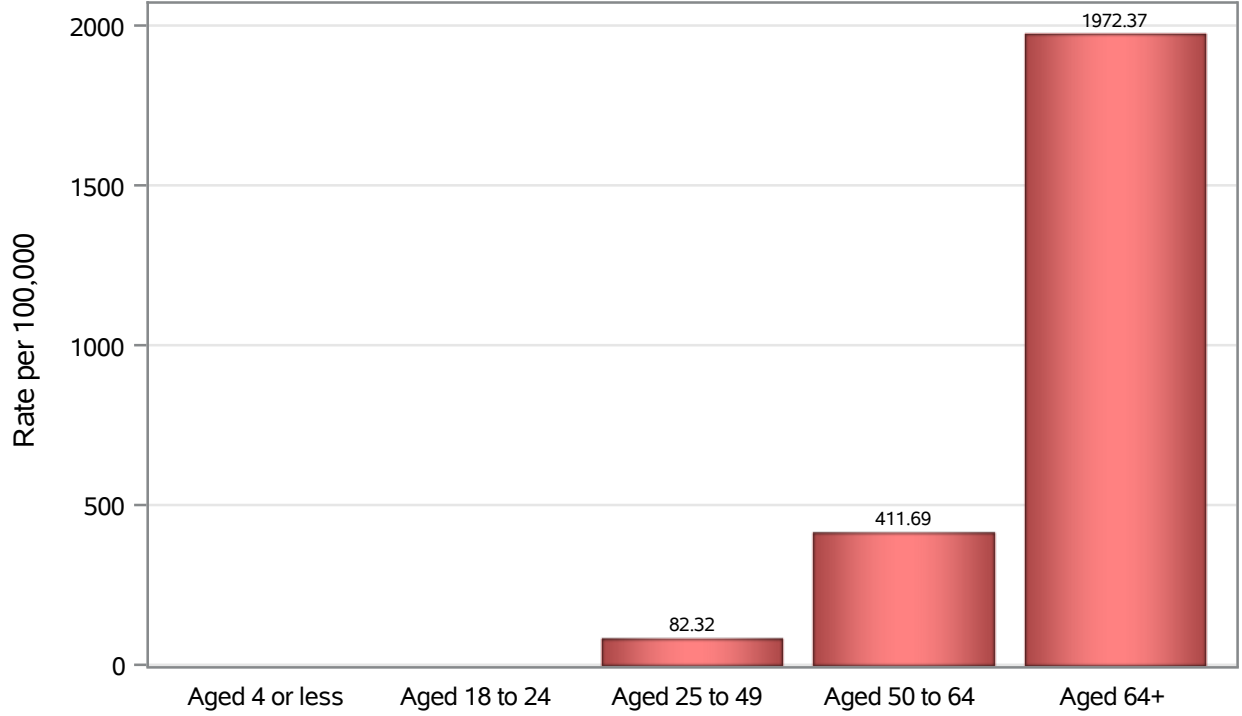


Investigations are ongoing; data are subject to change.

Reporting through 27FEB2023

Henderson zip codes include 89002, 89011, 89012, 89014, 89015, 89044, 89052, 89074, 89119, 89120, 89122, 89123, 89124, 89183.

### Death Age Rates in Henderson



Investigations are ongoing; data are subject to change.

Reporting through 27FEB2023

Henderson zip codes include 89002, 89011, 89012, 89014, 89015, 89044, 89052, 89074, 89119, 89120, 89122, 89123, 89124, 89183.

**Table 5: Age and COVID19 in Henderson**

Case Status	Age Categories	N	%	Population	Rate per 100,000
Cases	Aged 4 or less	3115	2.4	29,021	10734
	Aged 5 to 17	13548	10.5	82,126	16497
	Aged 18 to 24	13215	10.3	44,273	29849
	Aged 25 to 49	54344	42.2	187064	29051
	Aged 50 to 64	25720	20.0	102746	25033
	Aged 64+	18735	14.6	86,495	21660
	Unknown	28	0.0	.	.
Hospitalizations	Aged 4 or less	73	1.0	29,021	251.54
	Aged 5 to 17	86	1.2	82,126	104.72
	Aged 18 to 24	132	1.8	44,273	298.15
	Aged 25 to 49	1382	19.1	187064	738.78
	Aged 50 to 64	1728	23.9	102746	1681.8
	Aged 64+	3822	52.9	86,495	4418.8
	Unknown	1	0.0	.	.
Deaths	Aged 4 or less	1	0.0	29,021	.
	Aged 18 to 24	4	0.2	44,273	.
	Aged 25 to 49	154	6.7	187064	82.32
	Aged 50 to 64	423	18.5	102746	411.69
	Aged 64+	1706	74.6	86,495	1972.4

Note1: Population data source for calculating rate estimates: U.S. Census Bureau, ACS 5-year estimate.

Note2: Rates for categories with fewer than 12 cases are suppressed due to high relative standard error.

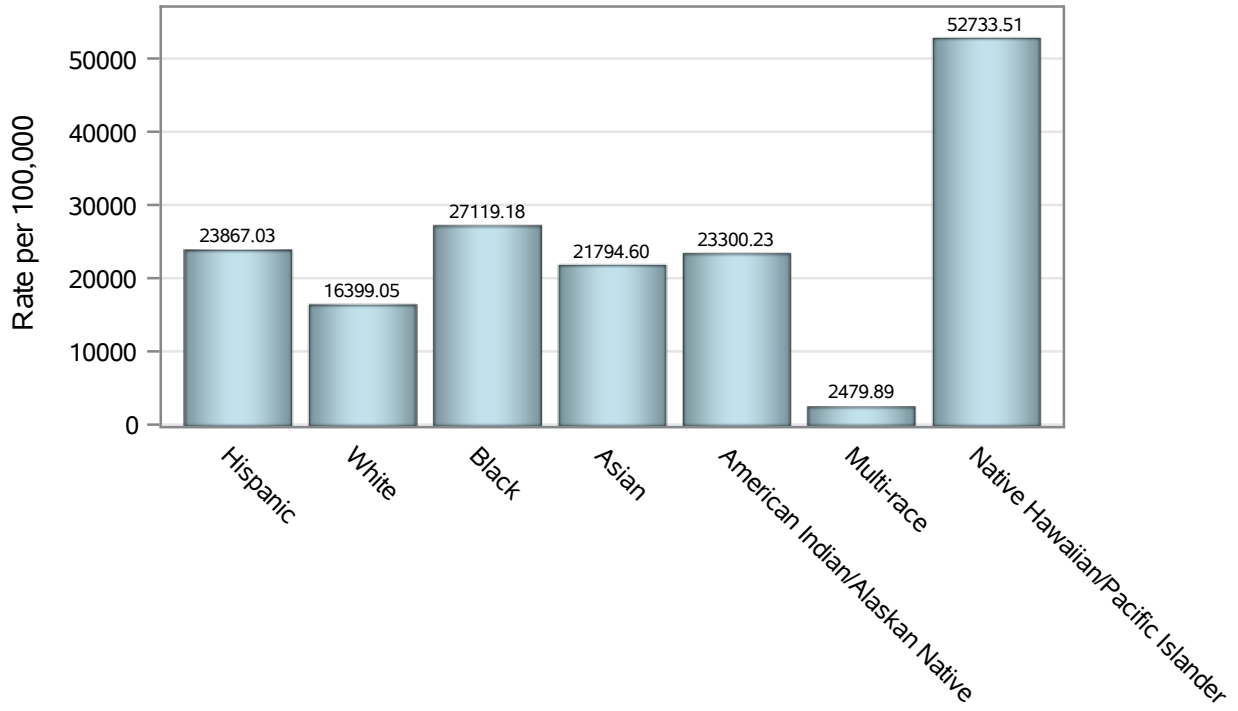
Note3: Hospitalizations are regardless of deceased status; Deaths are regardless of hospitalization status

**Investigations are ongoing; data are subject to change.**

**Reporting through 27FEB2023**

**Henderson zip codes include 89002, 89011, 89012, 89014, 89015, 89044, 89052, 89074, 89119, 89120, 89122, 89123, 89124, 89183.**

### Case Race/Ethnicity Rates in Henderson

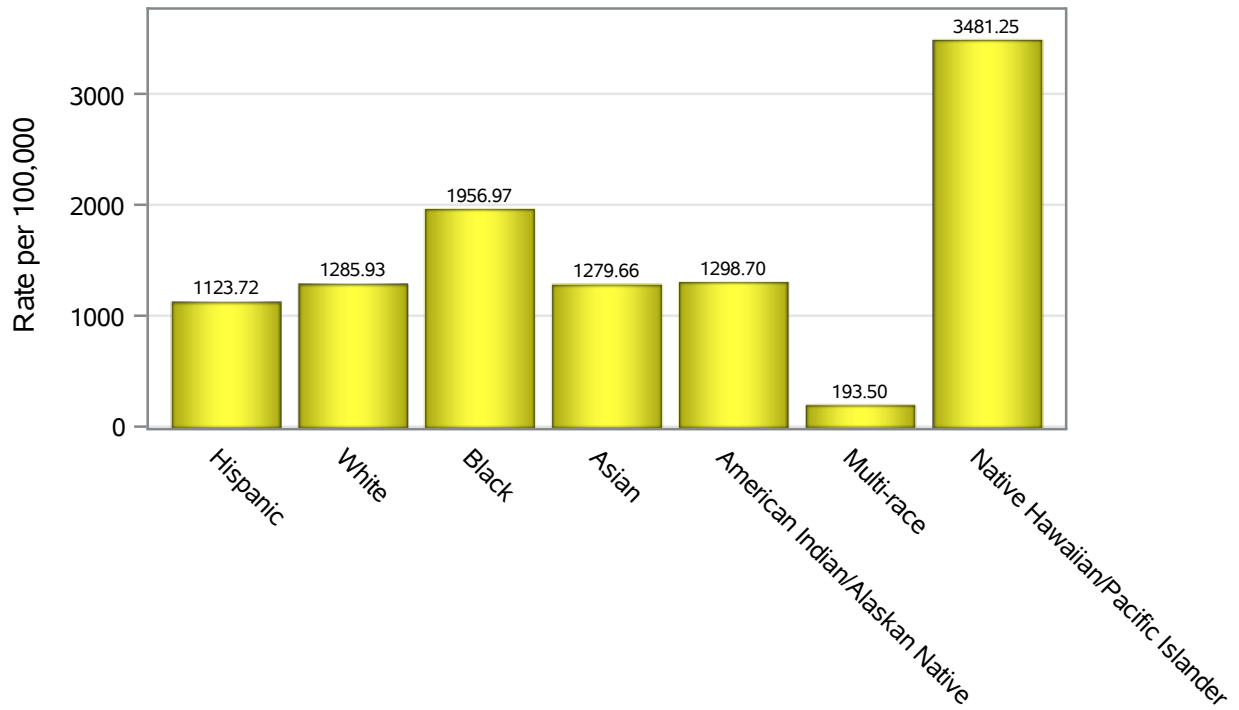


Investigations are ongoing; data are subject to change.

Reporting through 27FEB2023

Henderson zip codes include 89002, 89011, 89012, 89014, 89015, 89044, 89052, 89074, 89119, 89120, 89122, 89123, 89124, 89183.

### Hospitalization Race/Ethnicity Rates in Henderson

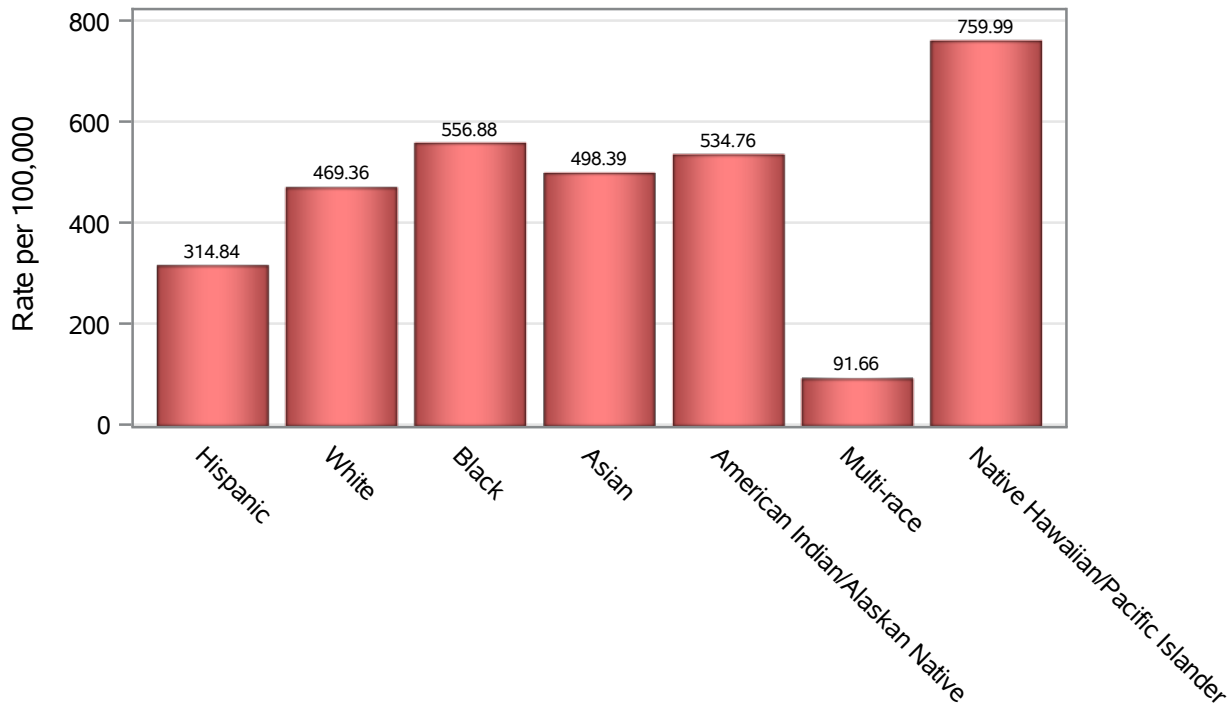


Investigations are ongoing; data are subject to change.

Reporting through 27FEB2023

Henderson zip codes include 89002, 89011, 89012, 89014, 89015, 89044, 89052, 89074, 89119, 89120, 89122, 89123, 89124, 89183.

### Death Race/Ethnicity Rates in Henderson



Investigations are ongoing; data are subject to change.

Reporting through 27FEB2023

Henderson zip codes include 89002, 89011, 89012, 89014, 89015, 89044, 89052, 89074, 89119, 89120, 89122, 89123, 89124, 89183.

**Table 6: Race/Ethnicity and COVID19 in Henderson**

Case Status	Race Ethnicity Categories	N	%	Population	Rate per 100,000
Cases	Hispanic	29034	22.6	121649	23867
	White	47797	37.1	291462	16399
	Black	10324	8.0	38,069	27119
	Asian	11326	8.8	51,967	21795
	American Indian/Alaskan Native	610	0.5	2,618	23300
	Multi-race	487	0.4	19,638	2479.9
	Native Hawaiian/Pacific Islander	2151	1.7	4,079	52734
	Unknown	26976	21.0	.	.
Hospitalizations	Hispanic	1367	18.9	121649	1123.7
	White	3748	51.9	291462	1285.9
	Black	745	10.3	38,069	1957.0
	Asian	665	9.2	51,967	1279.7
	American Indian/Alaskan Native	34	0.5	2,618	1298.7
	Multi-race	38	0.5	19,638	193.50
	Native Hawaiian/Pacific Islander	142	2.0	4,079	3481.2
	Unknown	485	6.7	.	.
Deaths	Hispanic	383	16.7	121649	314.84
	White	1368	59.8	291462	469.36
	Black	212	9.3	38,069	556.88
	Asian	259	11.3	51,967	498.39
	American Indian/Alaskan Native	14	0.6	2,618	534.76
	Multi-race	18	0.8	19,638	91.66
	Native Hawaiian/Pacific Islander	31	1.4	4,079	759.99
	Unknown	3	0.1	.	.

Note1: Population data source for calculating rate estimates: U.S. Census Bureau, ACS 5-year estimate.

Note2: Rates for categories with fewer than 12 cases are suppressed due to high relative standard error.

Note3: Hospitalizations are regardless of deceased status; Deaths are regardless of hospitalization status

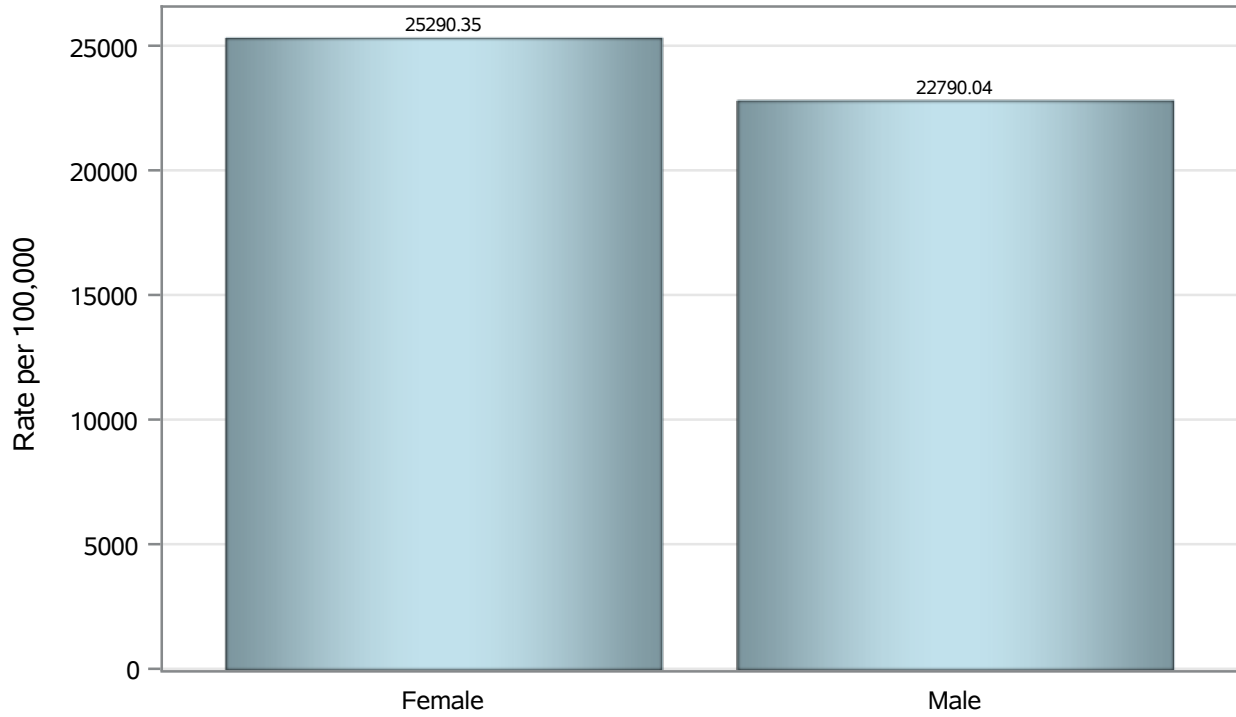
**Investigations are ongoing; data are subject to change.**

**Reporting through 27FEB2023**

**Henderson zip codes include 89002, 89011, 89012, 89014, 89015, 89044, 89052, 89074, 89119, 89120, 89122, 89123, 89124, 89183.**



### Case Birth Sex Rates in Henderson



Investigations are ongoing; data are subject to change.

Reporting through 27FEB2023

Henderson zip codes include 89002, 89011, 89012, 89014, 89015, 89044, 89052, 89074, 89119, 89120, 89122, 89123, 89124, 89183.

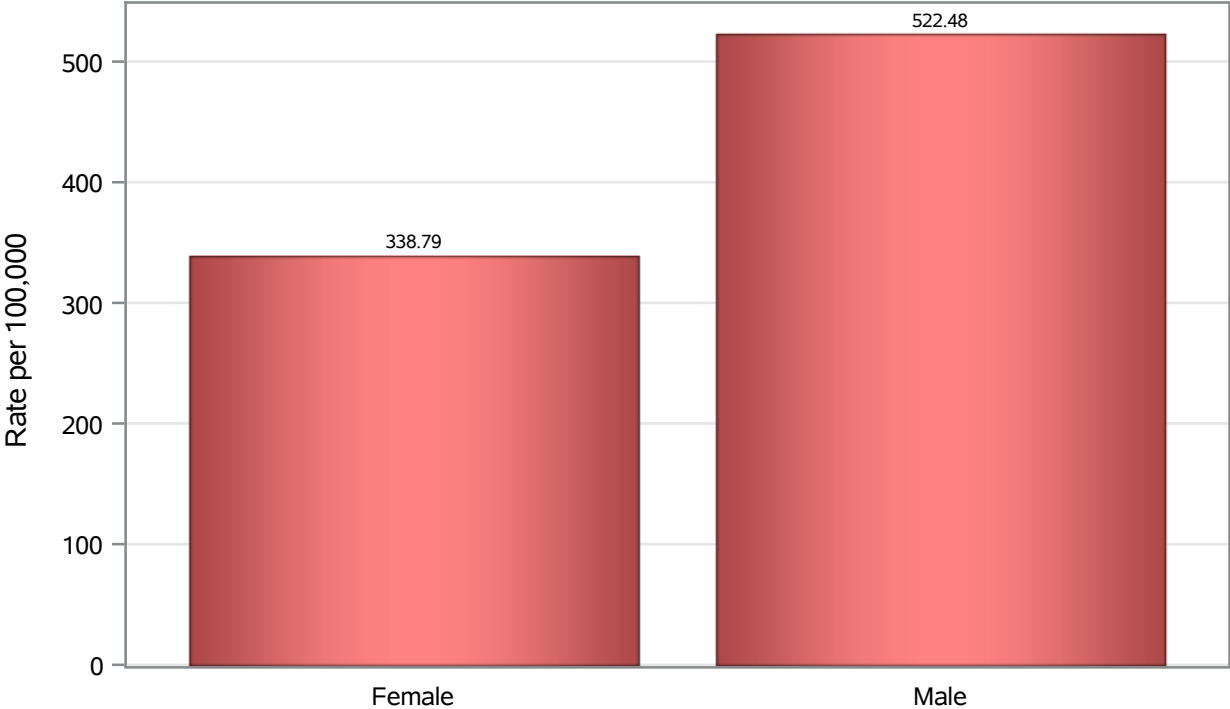
### Hospitalization Birth Sex Rates in Henderson



Investigations are ongoing; data are subject to change.  
Reporting through 27FEB2023

Henderson zip codes include 89002, 89011, 89012, 89014, 89015, 89044, 89052, 89074, 89119, 89120, 89122, 89123, 89124, 89183.

**Death Birth Sex Rates in Henderson**



Investigations are ongoing; data are subject to change.  
Reporting through 27FEB2023

Henderson zip codes include 89002, 89011, 89012, 89014, 89015, 89044, 89052, 89074, 89119, 89120, 89122, 89123, 89124, 89183.

**Table 7: Birth Sex and COVID19 in Henderson**

Case Status	Birth Sex Categories	N	%	Population	Rate per 100,000
Cases	Female	67483	52.4	266833	25290
	Male	60369	46.9	264892	22790
	Unknown	853	0.7	.	.
Hospitalizations	Female	3229	44.7	266833	1210.1
	Male	3984	55.1	264892	1504.0
	Unknown	11	0.2	.	.
Deaths	Female	904	39.5	266833	338.79
	Male	1384	60.5	264892	522.48

---

Note1: Population data source for calculating rate estimates: U.S. Census Bureau, ACS 5-year estimate.

Note2: Rates for categories with fewer than 12 cases are suppressed due to high relative standard error.

Note3: Hospitalizations are regardless of deceased status; Deaths are regardless of hospitalization status

---

**Investigations are ongoing; data are subject to change.**

**Reporting through 27FEB2023**

**Henderson zip codes include 89002, 89011, 89012, 89014, 89015, 89044, 89052, 89074, 89119, 89120, 89122, 89123, 89124, 89183.**