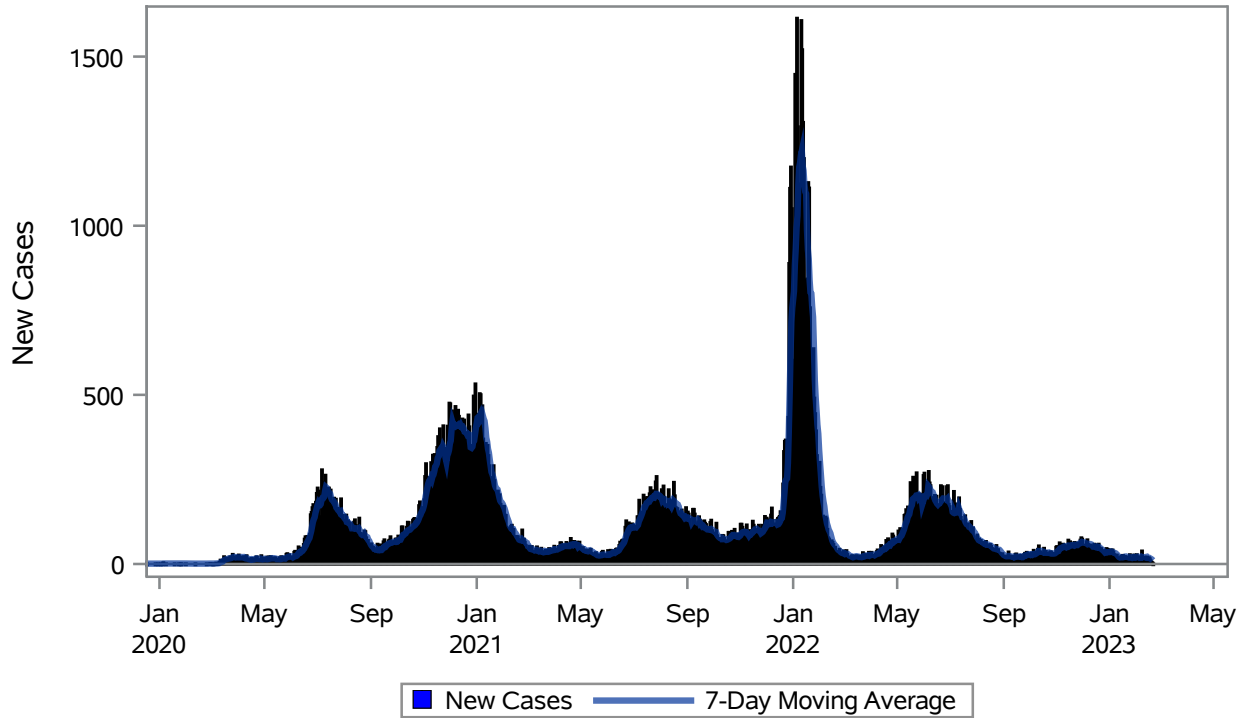


COVID19 Cases for Henderson, 7-Day Moving Average



Investigations are ongoing; data are subject to change.

Reporting through 20FEB2023

Henderson zip codes include 89002, 89011, 89012, 89014, 89015, 89044, 89052, 89074, 89119, 89120, 89122, 89123, 89124, 89183.

Table 1: New COVID19 Cases and 7-Day Moving Average in Henderson, Previous Two Weeks

Date (Daily)	New Cases	7-Day Moving Average
07FEB2023	39	21.14
08FEB2023	19	19.86
09FEB2023	17	20.14
10FEB2023	21	20.00
11FEB2023	16	19.57
12FEB2023	16	20.71
13FEB2023	21	21.29
14FEB2023	16	18.00
15FEB2023	19	18.00
16FEB2023	16	17.86
17FEB2023	10	16.29
18FEB2023	6	14.86

Note1: Event Date is calculated as follows based on completed information:

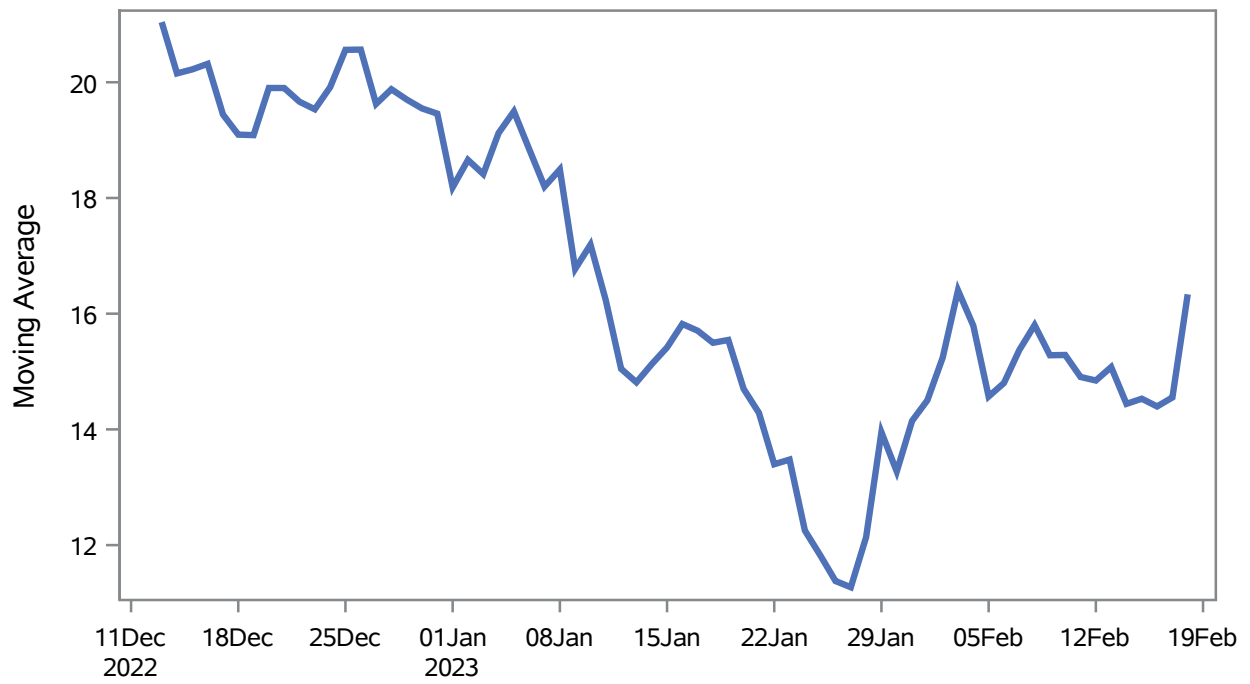
1) Disease onset date 2) Disease diagnosis date 3) Lab result collection date 4) Report date to SNHD.

Investigations are ongoing; data are subject to change.

Reporting through 20FEB2023

Henderson zip codes include 89002, 89011, 89012, 89014, 89015, 89044, 89052, 89074, 89119, 89120, 89122, 89123, 89124, 89183.

Percent of People Receiving COVID-19 Viral Tests Who Have Positive Results in Henderson



Investigations are ongoing; data are subject to change.

Reporting through 20FEB2023

Henderson zip codes include 89002, 89011, 89012, 89014, 89015, 89044, 89052, 89074, 89119, 89120, 89122, 89123, 89124, 89183.

Table 2: Percent of People Receiving COVID-19 Viral Tests Who Have Positive Results in Henderson

Collection Date	Positive	Negative	Equivocal	Total	% Positivity	7-Day Moving Average
04FEB2023	15	89		104	14.42	15.8
05FEB2023	16	83		99	16.16	14.6
06FEB2023	24	170		194	12.37	14.8
07FEB2023	33	137		170	19.41	15.4
08FEB2023	28	141		169	16.57	15.8
09FEB2023	20	152		172	11.63	15.3
10FEB2023	24	122		146	16.44	15.3
11FEB2023	12	90		102	11.76	14.9
12FEB2023	14	75		89	15.73	14.8
13FEB2023	21	129		150	14.00	15.1
14FEB2023	19	108		127	14.96	14.4
15FEB2023	22	106		128	17.19	14.5
16FEB2023	20	167		187	10.70	14.4
17FEB2023	17	80		97	17.53	14.6
18FEB2023	8	24	1	33	24.24	16.3

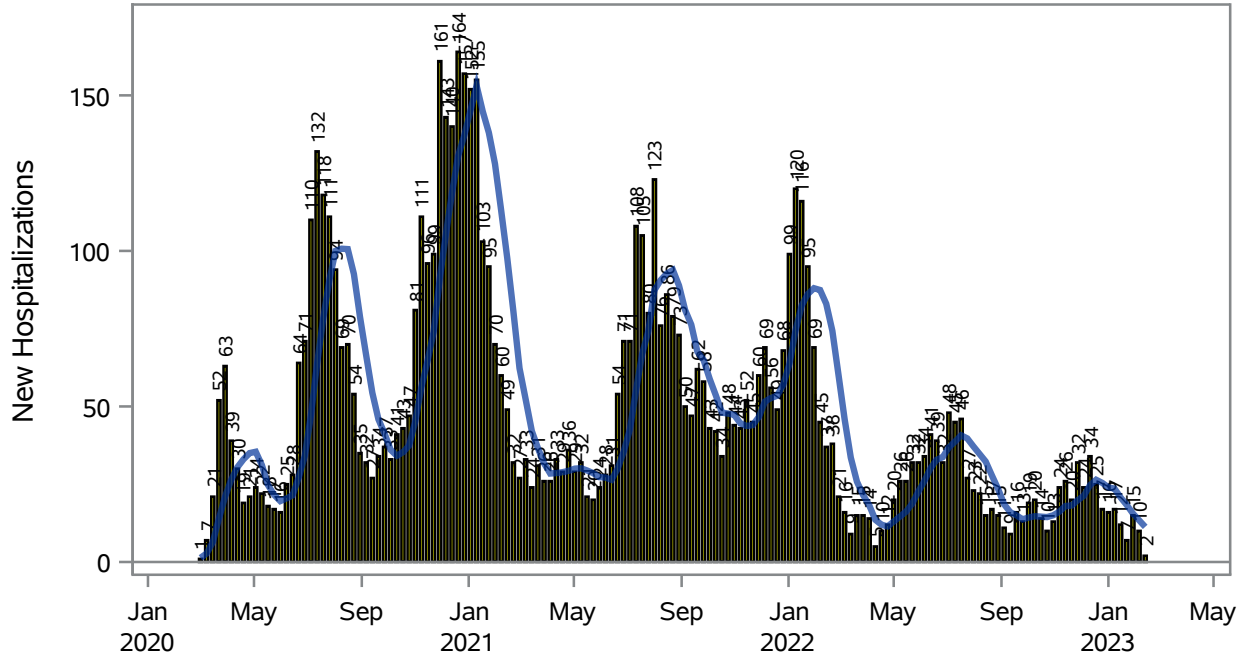
Note: Testing Data includes a 3 day delay

Investigations are ongoing; data are subject to change.

Reporting through 20FEB2023

Henderson zip codes include 89002, 89011, 89012, 89014, 89015, 89044, 89052, 89074, 89119, 89120, 89122, 89123, 89124, 89183.

COVID19 Hospitalizations for Henderson, 7-Day Moving Average



New Hospitalizations
 7-Day Moving Average

Investigations are ongoing; data are subject to change.

Reporting through 20FEB2023

Henderson zip codes include 89002, 89011, 89012, 89014, 89015, 89044, 89052, 89074, 89119, 89120, 89122, 89123, 89124, 89183.

Table 3: New COVID19-Related Hospitalizations and 7-Day Moving Average in Henderson, previous month

Week	Hospitalizations	7-Day Moving Average
22JAN2023	7	18.3
29JAN2023	15	15.6
05FEB2023	10	13.4
12FEB2023	2	11.3

Note1: Admission Date is calculated as follows based on completed information:
A) COVID19 Case is hospitalized B) COVID19 Case has a hospital admission date.

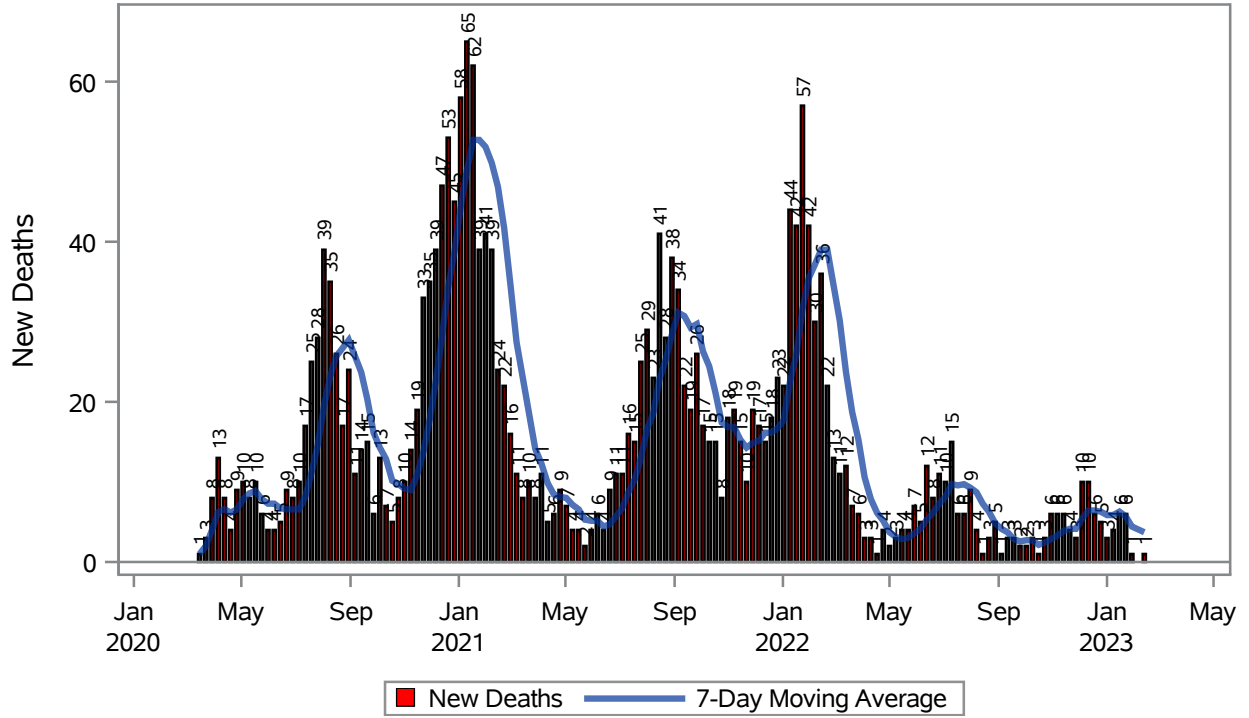
If admission date is missing, then the following is substituted temporarily, in order:
1) Disease onset date 2) Disease diagnosis date 3) Lab result collection date 4) Report date to SNHD.

Investigations are ongoing; data are subject to change.

Reporting through 20FEB2023

Henderson zip codes include 89002, 89011, 89012, 89014, 89015, 89044, 89052, 89074, 89119, 89120, 89122, 89123, 89124, 89183.

COVID19 Deaths for Henderson, 7-Day Moving Average



Investigations are ongoing; data are subject to change.

Reporting through 20FEB2023

Henderson zip codes include 89002, 89011, 89012, 89014, 89015, 89044, 89052, 89074, 89119, 89120, 89122, 89123, 89124, 89183.

Table 4: New COVID19-Related Deaths and 7-Day Moving Average in Henderson, Previous Month

Week	Deaths	7-Day Moving Average
22JAN2023	6	5.71
29JAN2023	1	4.43
12FEB2023	1	3.71

Note1: Date of Death is calculated as follows based on completed information:
A) COVID19 Case is reported as deceased B) COVID19 Case has a reported date of death.

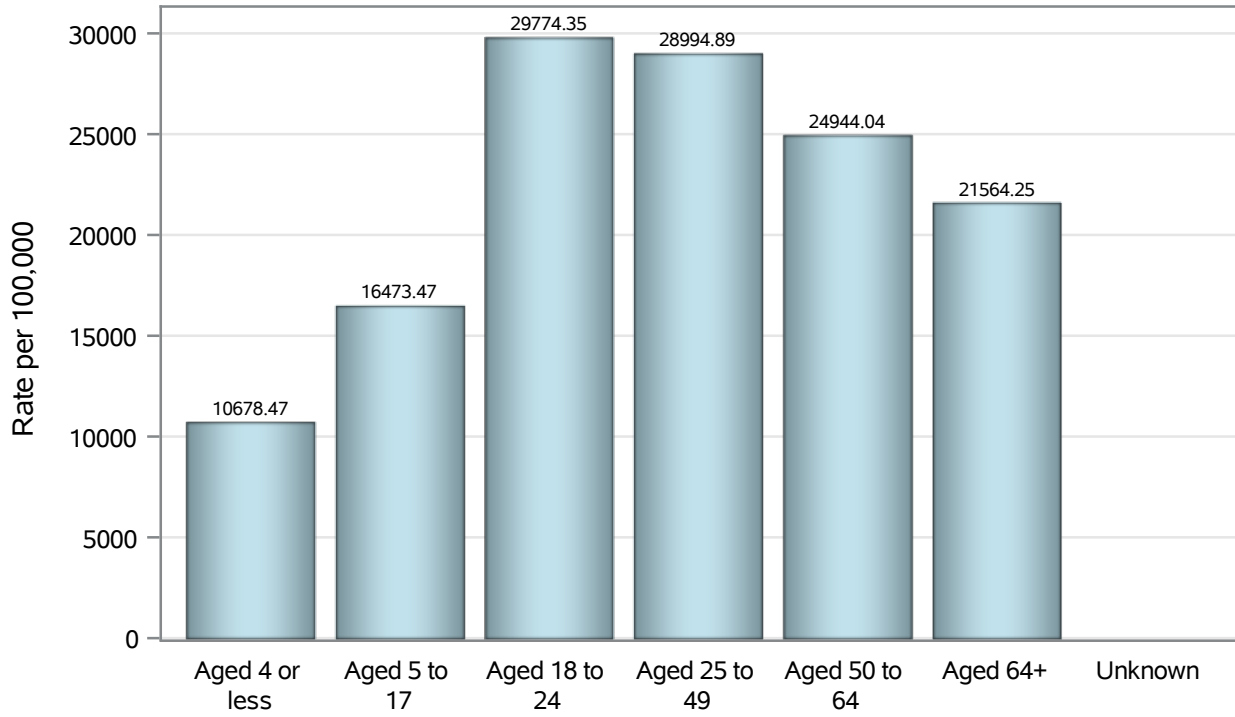
If date of death is missing, then the following is substituted temporarily, in order:
1) Disease onset date 2) Disease diagnosis date
3) Lab result collection date 4) Report date to SNHD.

Investigations are ongoing; data are subject to change.

Reporting through 20FEB2023

Henderson zip codes include 89002, 89011, 89012, 89014, 89015, 89044, 89052, 89074, 89119, 89120, 89122, 89123, 89124, 89183.

Case Age Rates in Henderson

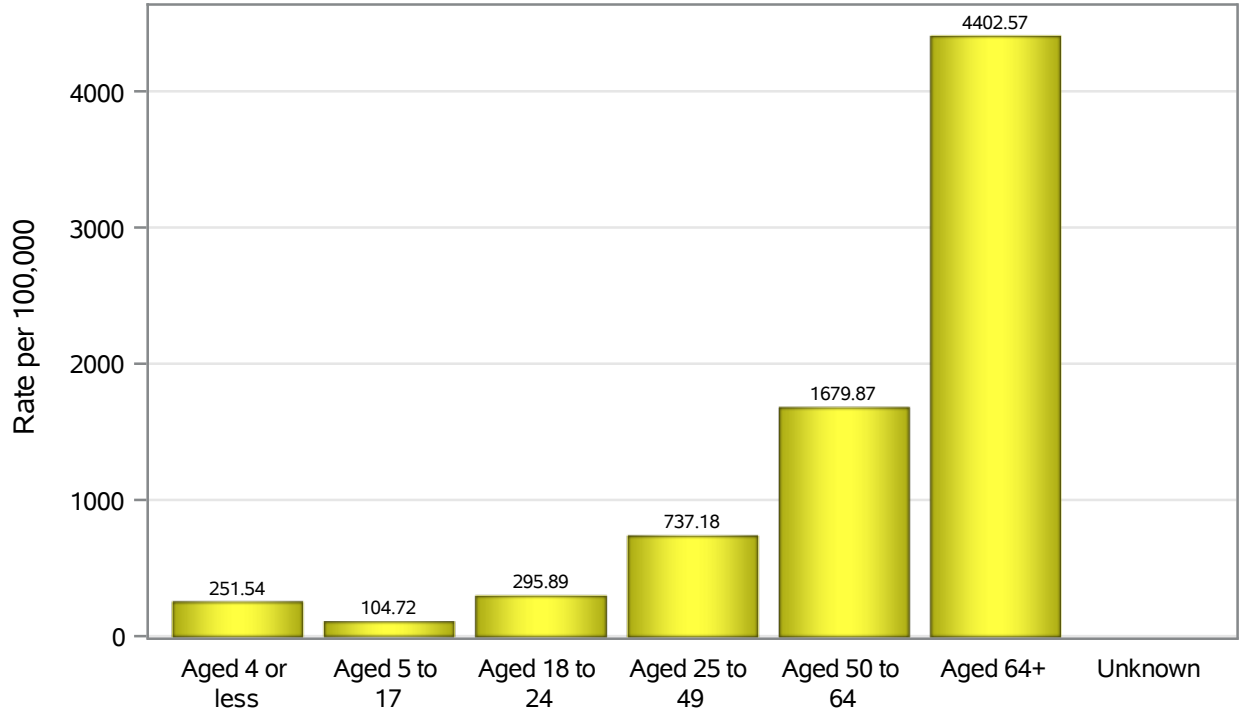


Investigations are ongoing; data are subject to change.

Reporting through 20FEB2023

Henderson zip codes include 89002, 89011, 89012, 89014, 89015, 89044, 89052, 89074, 89119, 89120, 89122, 89123, 89124, 89183.

Hospitalization Age Rates in Henderson

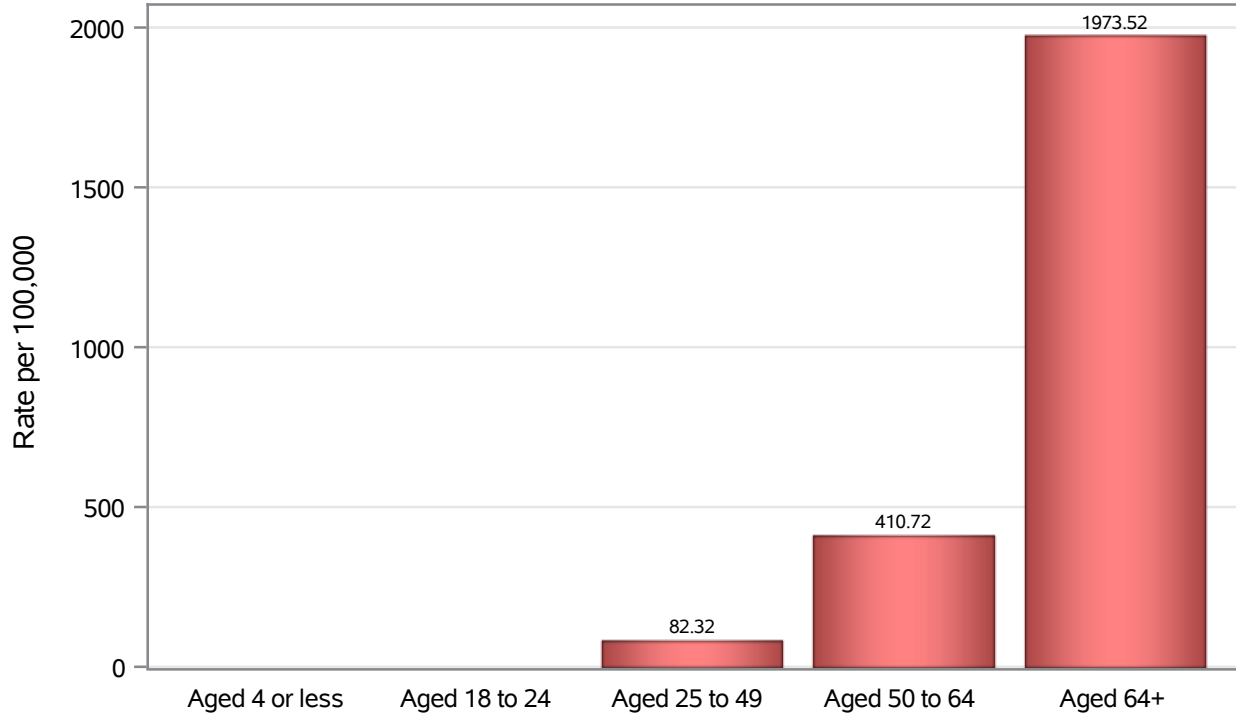


Investigations are ongoing; data are subject to change.

Reporting through 20FEB2023

Henderson zip codes include 89002, 89011, 89012, 89014, 89015, 89044, 89052, 89074, 89119, 89120, 89122, 89123, 89124, 89183.

Death Age Rates in Henderson



Investigations are ongoing; data are subject to change.

Reporting through 20FEB2023

Henderson zip codes include 89002, 89011, 89012, 89014, 89015, 89044, 89052, 89074, 89119, 89120, 89122, 89123, 89124, 89183.

Table 5: Age and COVID19 in Henderson

Case Status	Age Categories	N	%	Population	Rate per 100,000
Cases	Aged 4 or less	3099	2.4	29,021	10678
	Aged 5 to 17	13529	10.5	82,126	16473
	Aged 18 to 24	13182	10.3	44,273	29774
	Aged 25 to 49	54239	42.3	187064	28995
	Aged 50 to 64	25629	20.0	102746	24944
	Aged 64+	18652	14.5	86,495	21564
	Unknown	29	0.0	.	.
Hospitalizations	Aged 4 or less	73	1.0	29,021	251.54
	Aged 5 to 17	86	1.2	82,126	104.72
	Aged 18 to 24	131	1.8	44,273	295.89
	Aged 25 to 49	1379	19.1	187064	737.18
	Aged 50 to 64	1726	24.0	102746	1679.9
	Aged 64+	3808	52.9	86,495	4402.6
	Unknown	1	0.0	.	.
Deaths	Aged 4 or less	1	0.0	29,021	.
	Aged 18 to 24	4	0.2	44,273	.
	Aged 25 to 49	154	6.7	187064	82.32
	Aged 50 to 64	422	18.4	102746	410.72
	Aged 64+	1707	74.6	86,495	1973.5

Note1: Population data source for calculating rate estimates: U.S. Census Bureau, ACS 5-year estimate.

Note2: Rates for categories with fewer than 12 cases are suppressed due to high relative standard error.

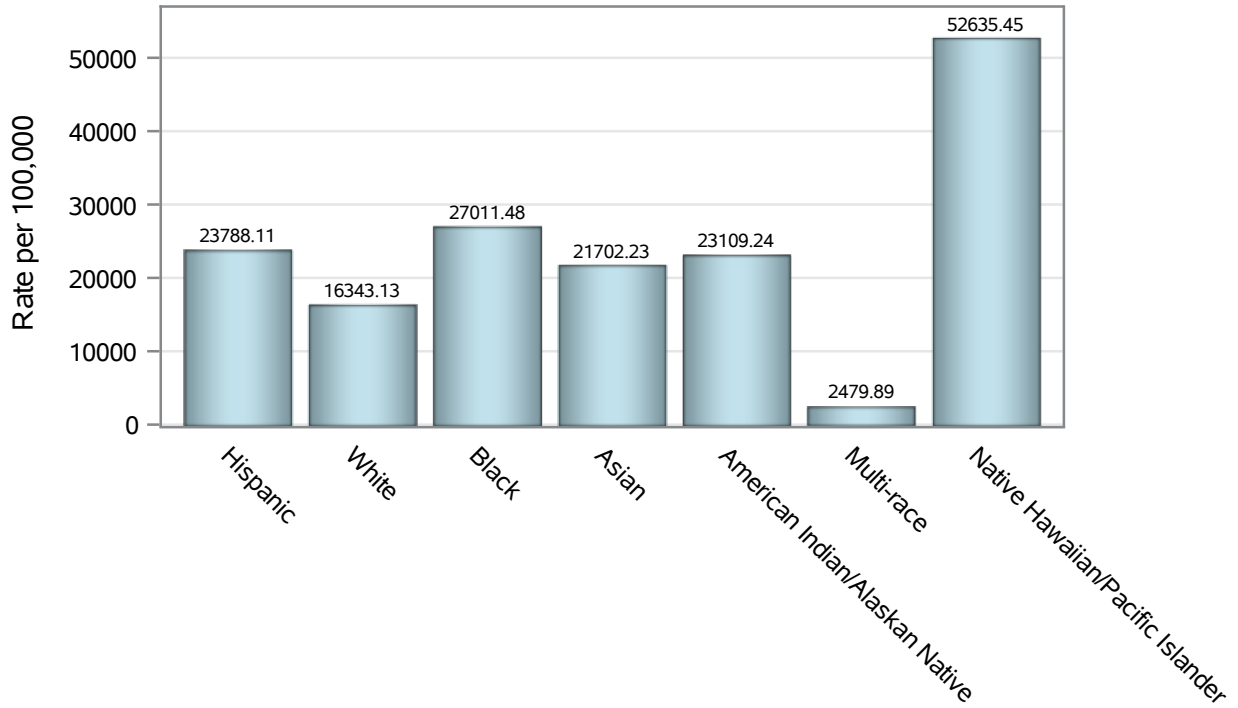
Note3: Hospitalizations are regardless of deceased status; Deaths are regardless of hospitalization status

Investigations are ongoing; data are subject to change.

Reporting through 20FEB2023

Henderson zip codes include 89002, 89011, 89012, 89014, 89015, 89044, 89052, 89074, 89119, 89120, 89122, 89123, 89124, 89183.

Case Race/Ethnicity Rates in Henderson

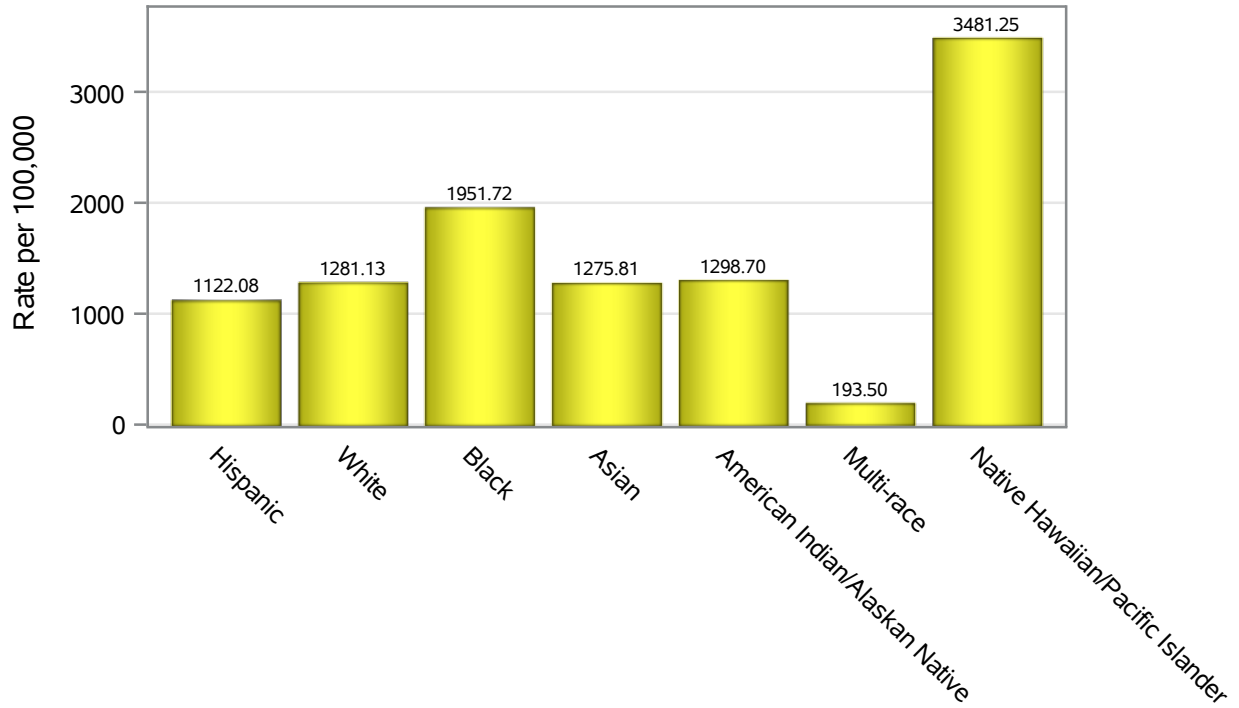


Investigations are ongoing; data are subject to change.

Reporting through 20FEB2023

Henderson zip codes include 89002, 89011, 89012, 89014, 89015, 89044, 89052, 89074, 89119, 89120, 89122, 89123, 89124, 89183.

Hospitalization Race/Ethnicity Rates in Henderson

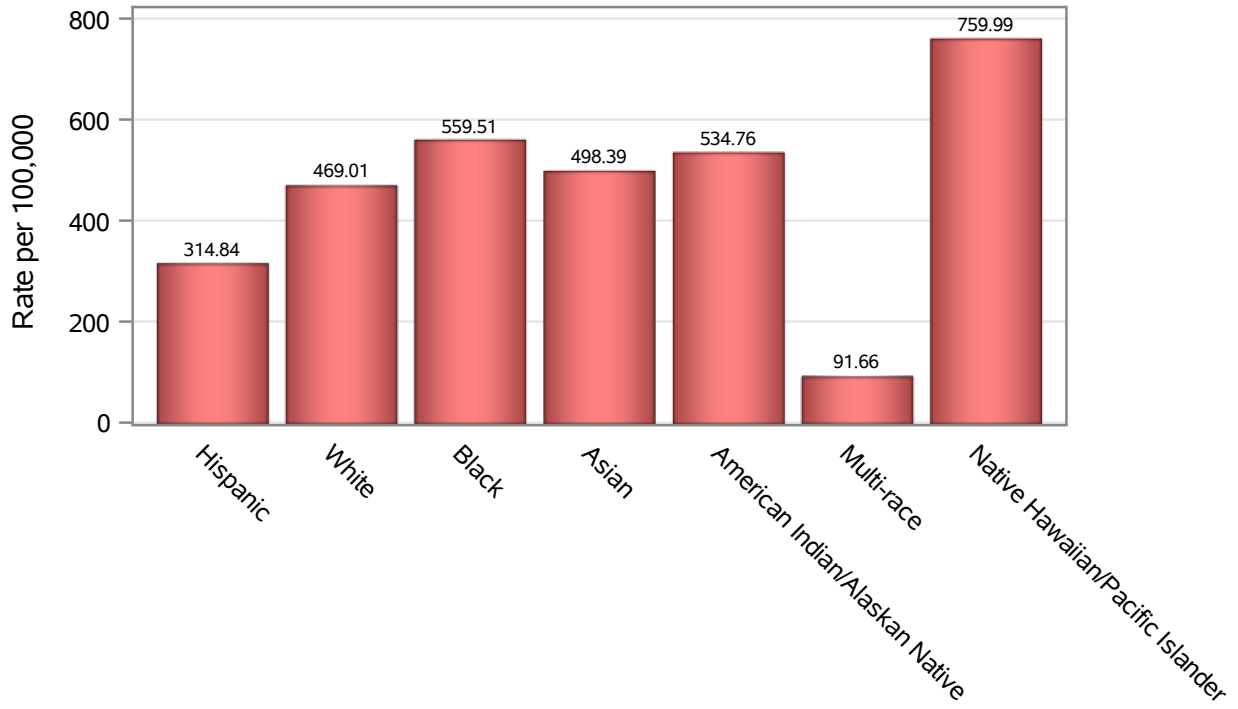


Investigations are ongoing; data are subject to change.

Reporting through 20FEB2023

Henderson zip codes include 89002, 89011, 89012, 89014, 89015, 89044, 89052, 89074, 89119, 89120, 89122, 89123, 89124, 89183.

Death Race/Ethnicity Rates in Henderson



Investigations are ongoing; data are subject to change.

Reporting through 20FEB2023

Henderson zip codes include 89002, 89011, 89012, 89014, 89015, 89044, 89052, 89074, 89119, 89120, 89122, 89123, 89124, 89183.

Table 6: Race/Ethnicity and COVID19 in Henderson

Case Status	Race Ethnicity Categories	N	%	Population	Rate per 100,000
Cases	Hispanic	28938	22.5	121649	23788
	White	47634	37.1	291462	16343
	Black	10283	8.0	38,069	27011
	Asian	11278	8.8	51,967	21702
	American Indian/Alaskan Native	605	0.5	2,618	23109
	Multi-race	487	0.4	19,638	2479.9
	Native Hawaiian/Pacific Islander	2147	1.7	4,079	52635
	Unknown	26987	21.0	.	.
Hospitalizations	Hispanic	1365	18.9	121649	1122.1
	White	3734	51.8	291462	1281.1
	Black	743	10.3	38,069	1951.7
	Asian	663	9.2	51,967	1275.8
	American Indian/Alaskan Native	34	0.5	2,618	1298.7
	Multi-race	38	0.5	19,638	193.50
	Native Hawaiian/Pacific Islander	142	2.0	4,079	3481.2
	Unknown	485	6.7	.	.
Deaths	Hispanic	383	16.7	121649	314.84
	White	1367	59.7	291462	469.01
	Black	213	9.3	38,069	559.51
	Asian	259	11.3	51,967	498.39
	American Indian/Alaskan Native	14	0.6	2,618	534.76
	Multi-race	18	0.8	19,638	91.66
	Native Hawaiian/Pacific Islander	31	1.4	4,079	759.99
	Unknown	3	0.1	.	.

Note1: Population data source for calculating rate estimates: U.S. Census Bureau, ACS 5-year estimate.

Note2: Rates for categories with fewer than 12 cases are suppressed due to high relative standard error.

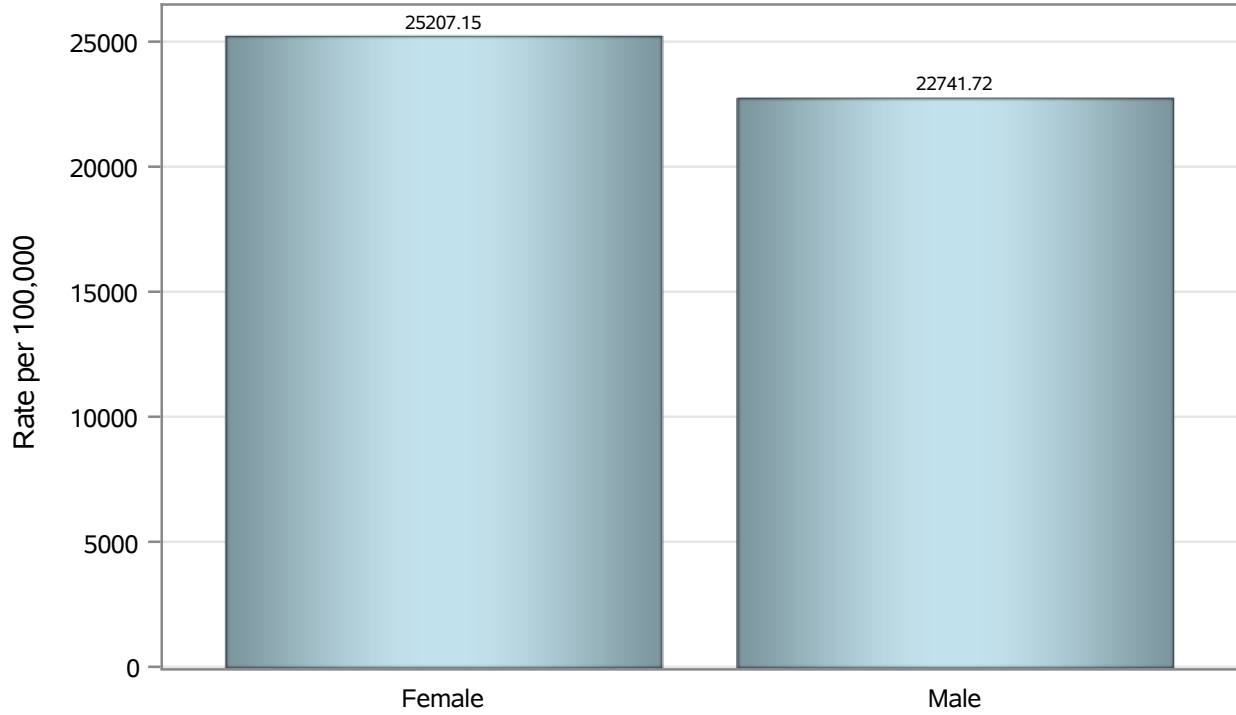
Note3: Hospitalizations are regardless of deceased status; Deaths are regardless of hospitalization status

Investigations are ongoing; data are subject to change.

Reporting through 20FEB2023

Henderson zip codes include 89002, 89011, 89012, 89014, 89015, 89044, 89052, 89074, 89119, 89120, 89122, 89123, 89124, 89183.

Case Birth Sex Rates in Henderson



Investigations are ongoing; data are subject to change.

Reporting through 20FEB2023

Henderson zip codes include 89002, 89011, 89012, 89014, 89015, 89044, 89052, 89074, 89119, 89120, 89122, 89123, 89124, 89183.

Hospitalization Birth Sex Rates in Henderson

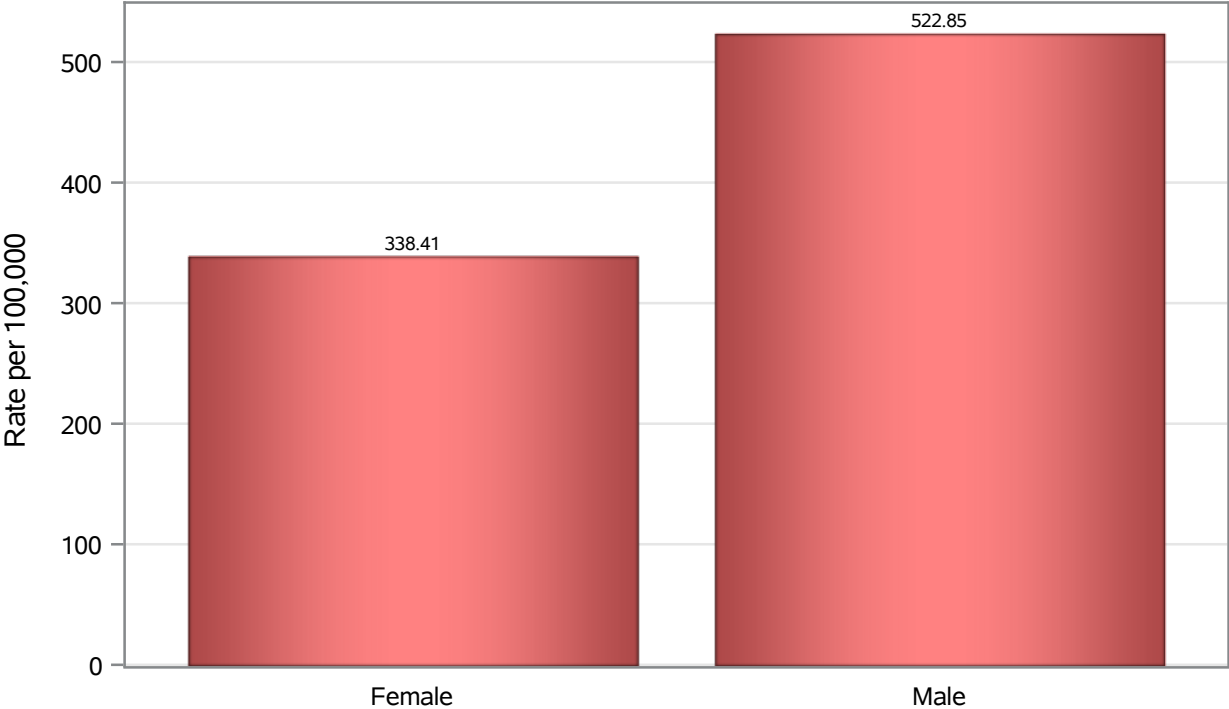


Investigations are ongoing; data are subject to change.

Reporting through 20FEB2023

Henderson zip codes include 89002, 89011, 89012, 89014, 89015, 89044, 89052, 89074, 89119, 89120, 89122, 89123, 89124, 89183.

Death Birth Sex Rates in Henderson



Investigations are ongoing; data are subject to change.
Reporting through 20FEB2023

Henderson zip codes include 89002, 89011, 89012, 89014, 89015, 89044, 89052, 89074, 89119, 89120, 89122, 89123, 89124, 89183.

Table 7: Birth Sex and COVID19 in Henderson

Case Status	Birth Sex Categories	N	%	Population	Rate per 100,000
Cases	Female	67261	52.4	266833	25207
	Male	60241	46.9	264892	22742
	Unknown	857	0.7	.	.
Hospitalizations	Female	3222	44.7	266833	1207.5
	Male	3971	55.1	264892	1499.1
	Unknown	11	0.2	.	.
Deaths	Female	903	39.5	266833	338.41
	Male	1385	60.5	264892	522.85

Note1: Population data source for calculating rate estimates: U.S. Census Bureau, ACS 5-year estimate.

Note2: Rates for categories with fewer than 12 cases are suppressed due to high relative standard error.

Note3: Hospitalizations are regardless of deceased status; Deaths are regardless of hospitalization status

Investigations are ongoing; data are subject to change.

Reporting through 20FEB2023

Henderson zip codes include 89002, 89011, 89012, 89014, 89015, 89044, 89052, 89074, 89119, 89120, 89122, 89123, 89124, 89183.