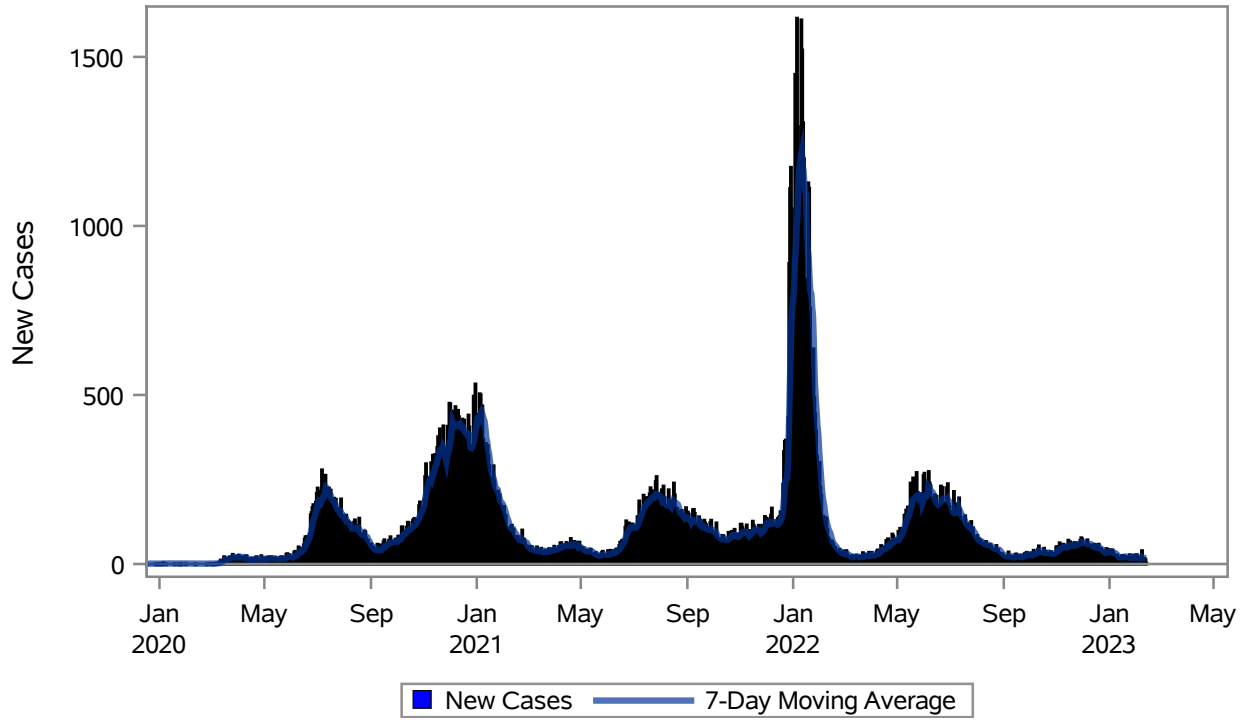


COVID19 Cases for Henderson, 7-Day Moving Average



Investigations are ongoing; data are subject to change.

Reporting through 13FEB2023

Henderson zip codes include 89002, 89011, 89012, 89014, 89015, 89044, 89052, 89074, 89119, 89120, 89122, 89123, 89124, 89183.

Table 1: New COVID19 Cases and 7-Day Moving Average in Henderson, Previous Two Weeks

Date (Daily)	New Cases	7-Day Moving Average
31JAN2023	19	19.14
01FEB2023	28	20.86
02FEB2023	13	20.43
03FEB2023	21	21.14
04FEB2023	16	19.86
05FEB2023	7	17.00
06FEB2023	15	17.00
07FEB2023	40	20.00
08FEB2023	16	18.29
09FEB2023	14	18.43
10FEB2023	17	17.86
11FEB2023	13	17.43

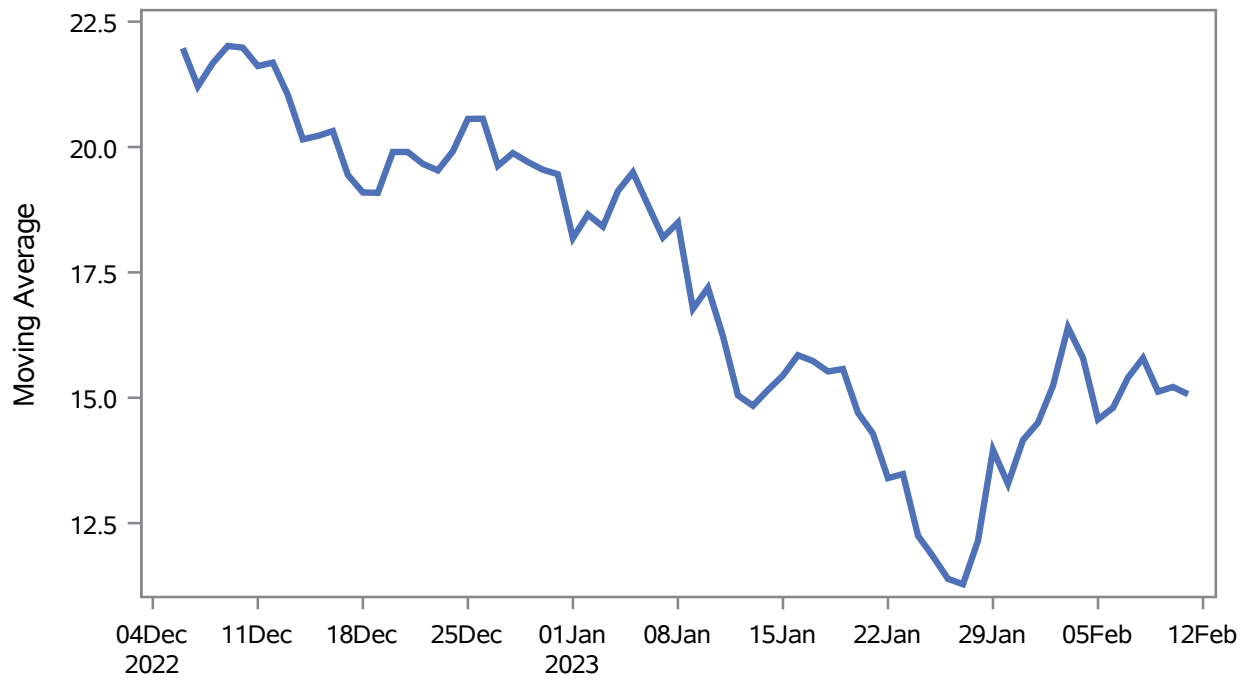
Note1: Event Date is calculated as follows based on completed information:
1) Disease onset date 2) Disease diagnosis date 3) Lab result collection date 4) Report date to SNHD.

Investigations are ongoing; data are subject to change.

Reporting through 13FEB2023

Henderson zip codes include 89002, 89011, 89012, 89014, 89015, 89044, 89052, 89074, 89119, 89120, 89122, 89123, 89124, 89183.

Percent of People Receiving COVID-19 Viral Tests Who Have Positive Results in Henderson



Investigations are ongoing; data are subject to change.

Reporting through 13FEB2023

Henderson zip codes include 89002, 89011, 89012, 89014, 89015, 89044, 89052, 89074, 89119, 89120, 89122, 89123, 89124, 89183.

Table 2: Percent of People Receiving COVID-19 Viral Tests Who Have Positive Results in Henderson

Collection Date	Positive	Negative	Equivocal	Total	% Positivity	7-Day Moving Average
28JAN2023	23	100		123	18.70	12.1
29JAN2023	23	70		93	24.73	14.0
30JAN2023	16	133		149	10.74	13.3
31JAN2023	23	126		149	15.44	14.2
01FEB2023	18	115		133	13.53	14.5
02FEB2023	22	122		144	15.28	15.2
03FEB2023	21	107		128	16.41	16.4
04FEB2023	15	89		104	14.42	15.8
05FEB2023	16	83		99	16.16	14.6
06FEB2023	24	170		194	12.37	14.8
07FEB2023	33	135		168	19.64	15.4
08FEB2023	27	139		166	16.27	15.8
09FEB2023	18	152		170	10.59	15.1
10FEB2023	22	107		129	17.05	15.2
11FEB2023	11	71		82	13.41	15.1

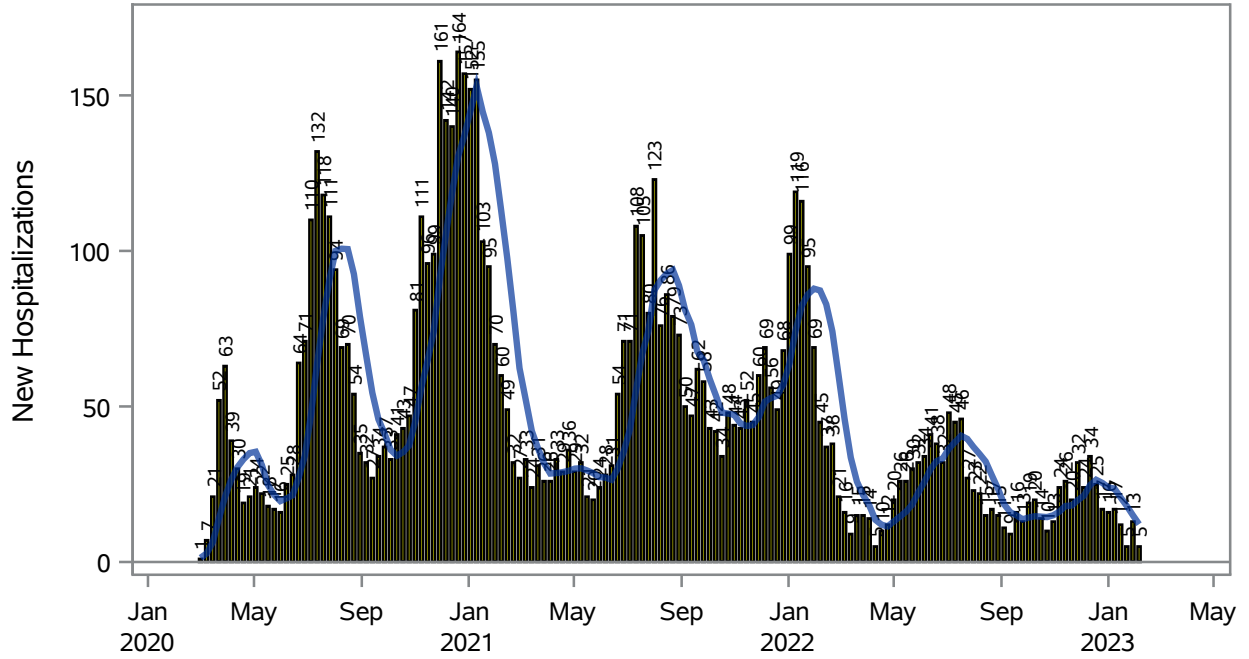
Note: Testing Data includes a 3 day delay

Investigations are ongoing; data are subject to change.

Reporting through 13FEB2023

Henderson zip codes include 89002, 89011, 89012, 89014, 89015, 89044, 89052, 89074, 89119, 89120, 89122, 89123, 89124, 89183.

COVID19 Hospitalizations for Henderson, 7-Day Moving Average



New Hospitalizations
 7-Day Moving Average

Investigations are ongoing; data are subject to change.

Reporting through 13FEB2023

Henderson zip codes include 89002, 89011, 89012, 89014, 89015, 89044, 89052, 89074, 89119, 89120, 89122, 89123, 89124, 89183.

Table 3: New COVID19-Related Hospitalizations and 7-Day Moving Average in Henderson, previous month

Week	Hospitalizations	7-Day Moving Average
15JAN2023	12	20.7
22JAN2023	5	18.0
29JAN2023	13	15.0
05FEB2023	5	12.1

Note1: Admission Date is calculated as follows based on completed information:
A) COVID19 Case is hospitalized B) COVID19 Case has a hospital admission date.

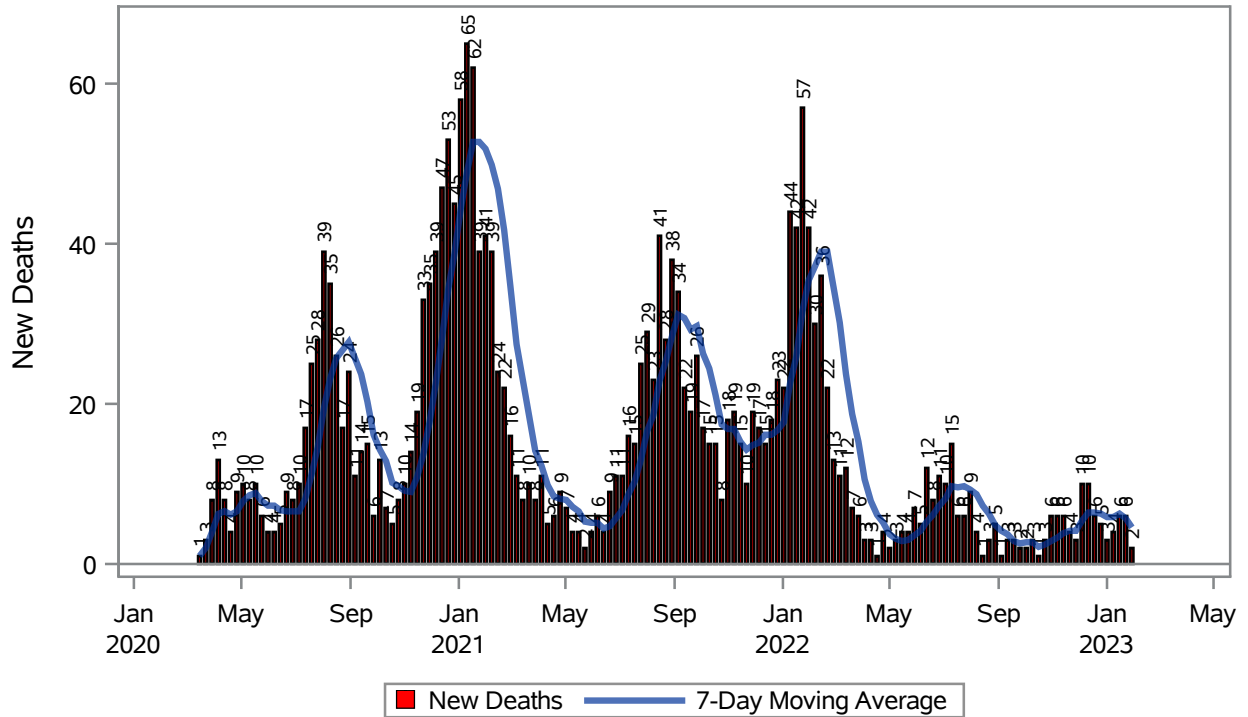
If admission date is missing, then the following is substituted temporarily, in order:
1) Disease onset date 2) Disease diagnosis date 3) Lab result collection date 4) Report date to SNHD.

Investigations are ongoing; data are subject to change.

Reporting through 13FEB2023

Henderson zip codes include 89002, 89011, 89012, 89014, 89015, 89044, 89052, 89074, 89119, 89120, 89122, 89123, 89124, 89183.

COVID19 Deaths for Henderson, 7-Day Moving Average



Investigations are ongoing; data are subject to change.

Reporting through 13FEB2023

Henderson zip codes include 89002, 89011, 89012, 89014, 89015, 89044, 89052, 89074, 89119, 89120, 89122, 89123, 89124, 89183.

Table 4: New COVID19-Related Deaths and 7-Day Moving Average in Henderson, Previous Month

Week	Deaths	7-Day Moving Average
15JAN2023	6	6.29
22JAN2023	6	5.71
29JAN2023	2	4.57

Note1: Date of Death is calculated as follows based on completed information:
A) COVID19 Case is reported as deceased B) COVID19 Case has a reported date of death.

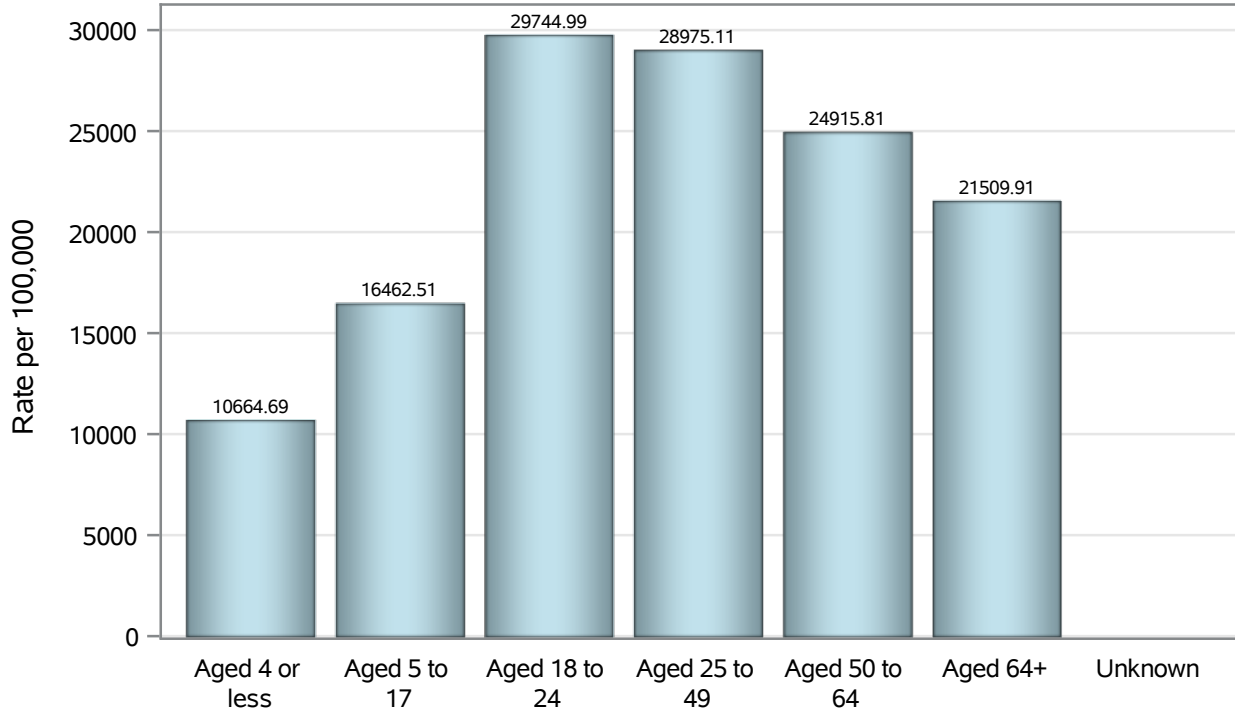
If date of death is missing, then the following is substituted temporarily, in order:
1) Disease onset date 2) Disease diagnosis date
3) Lab result collection date 4) Report date to SNHD.

Investigations are ongoing; data are subject to change.

Reporting through 13FEB2023

Henderson zip codes include 89002, 89011, 89012, 89014, 89015, 89044, 89052, 89074, 89119, 89120, 89122, 89123, 89124, 89183.

Case Age Rates in Henderson

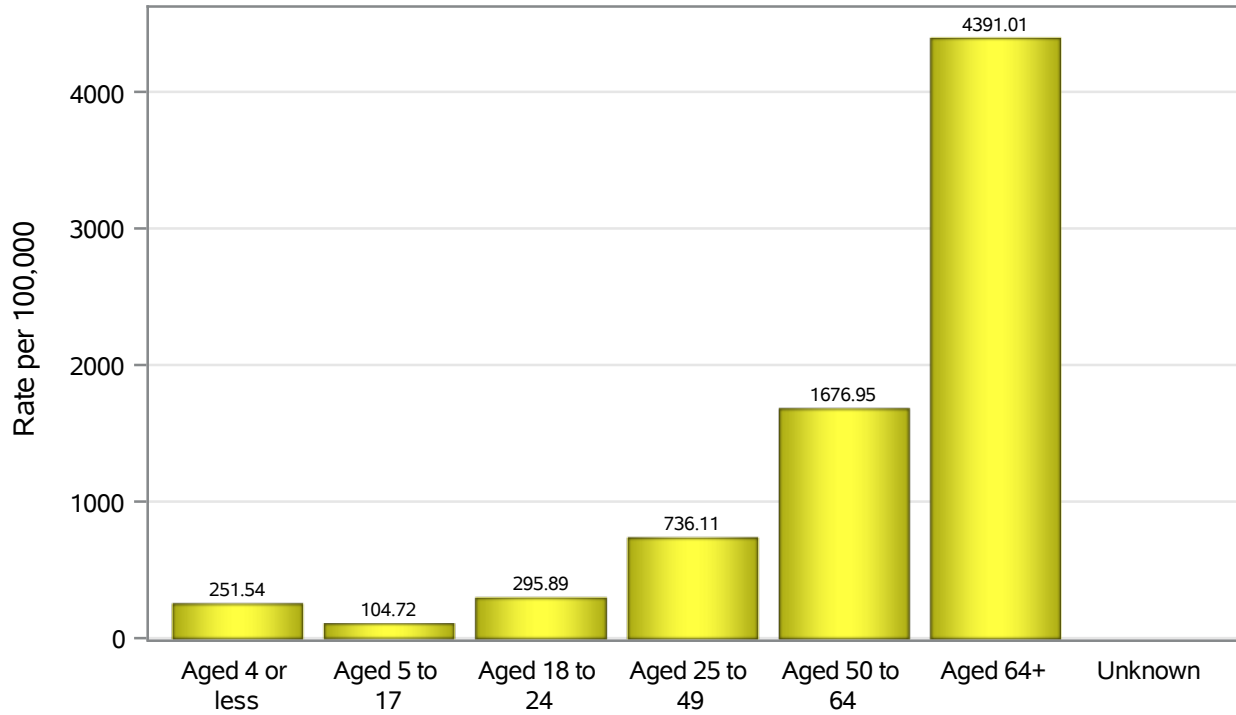


Investigations are ongoing; data are subject to change.

Reporting through 13FEB2023

Henderson zip codes include 89002, 89011, 89012, 89014, 89015, 89044, 89052, 89074, 89119, 89120, 89122, 89123, 89124, 89183.

Hospitalization Age Rates in Henderson

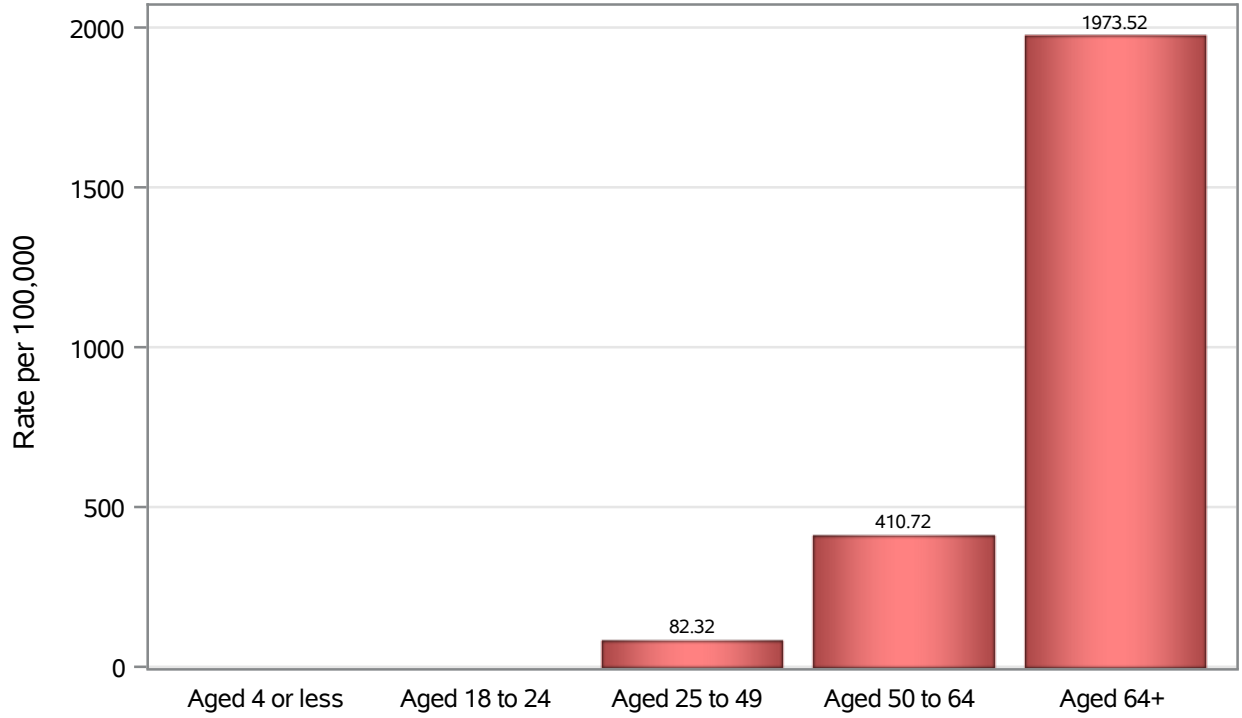


Investigations are ongoing; data are subject to change.

Reporting through 13FEB2023

Henderson zip codes include 89002, 89011, 89012, 89014, 89015, 89044, 89052, 89074, 89119, 89120, 89122, 89123, 89124, 89183.

Death Age Rates in Henderson



Investigations are ongoing; data are subject to change.

Reporting through 13FEB2023

Henderson zip codes include 89002, 89011, 89012, 89014, 89015, 89044, 89052, 89074, 89119, 89120, 89122, 89123, 89124, 89183.

Table 5: Age and COVID19 in Henderson

Case Status	Age Categories	N	%	Population	Rate per 100,000
Cases	Aged 4 or less	3095	2.4	29,021	10665
	Aged 5 to 17	13520	10.5	82,126	16463
	Aged 18 to 24	13169	10.3	44,273	29745
	Aged 25 to 49	54202	42.3	187064	28975
	Aged 50 to 64	25600	20.0	102746	24916
	Aged 64+	18605	14.5	86,495	21510
	Unknown	29	0.0	.	.
Hospitalizations	Aged 4 or less	73	1.0	29,021	251.54
	Aged 5 to 17	86	1.2	82,126	104.72
	Aged 18 to 24	131	1.8	44,273	295.89
	Aged 25 to 49	1377	19.2	187064	736.11
	Aged 50 to 64	1723	24.0	102746	1677.0
	Aged 64+	3798	52.8	86,495	4391.0
	Unknown	1	0.0	.	.
Deaths	Aged 4 or less	1	0.0	29,021	.
	Aged 18 to 24	4	0.2	44,273	.
	Aged 25 to 49	154	6.7	187064	82.32
	Aged 50 to 64	422	18.4	102746	410.72
	Aged 64+	1707	74.6	86,495	1973.5

Note1: Population data source for calculating rate estimates: U.S. Census Bureau, ACS 5-year estimate.

Note2: Rates for categories with fewer than 12 cases are suppressed due to high relative standard error.

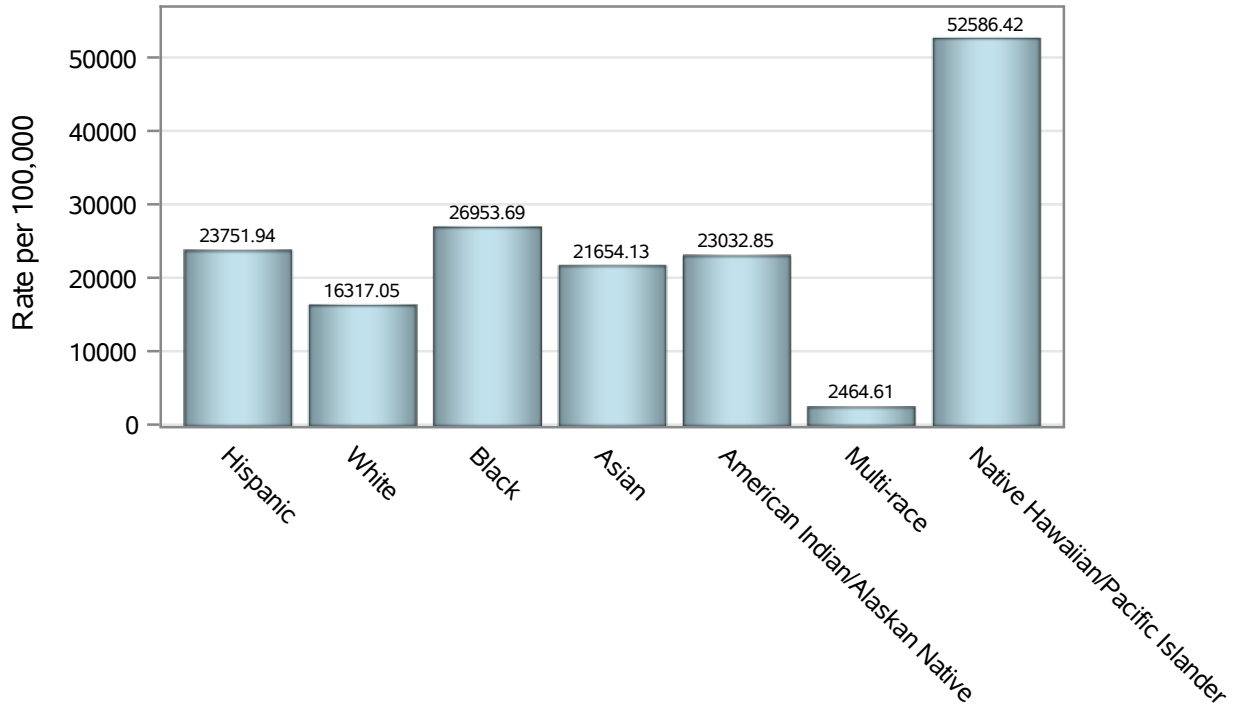
Note3: Hospitalizations are regardless of deceased status; Deaths are regardless of hospitalization status

Investigations are ongoing; data are subject to change.

Reporting through 13FEB2023

Henderson zip codes include 89002, 89011, 89012, 89014, 89015, 89044, 89052, 89074, 89119, 89120, 89122, 89123, 89124, 89183.

Case Race/Ethnicity Rates in Henderson

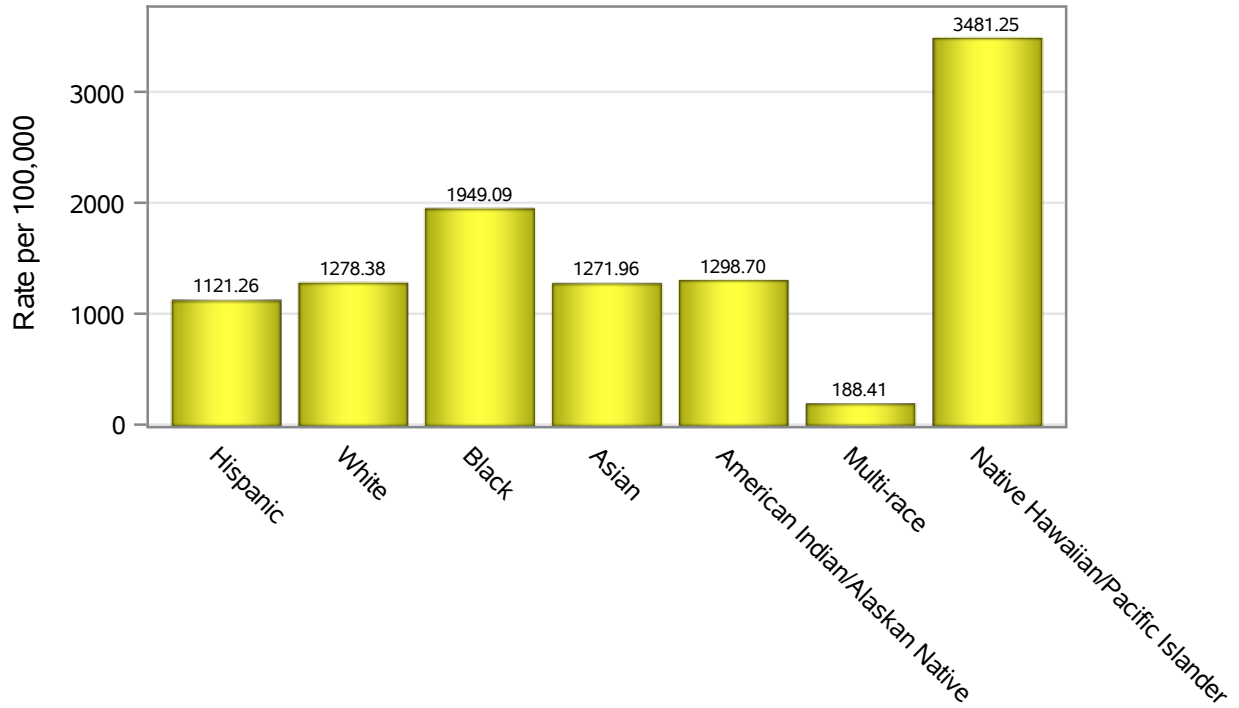


Investigations are ongoing; data are subject to change.

Reporting through 13FEB2023

Henderson zip codes include 89002, 89011, 89012, 89014, 89015, 89044, 89052, 89074, 89119, 89120, 89122, 89123, 89124, 89183.

Hospitalization Race/Ethnicity Rates in Henderson

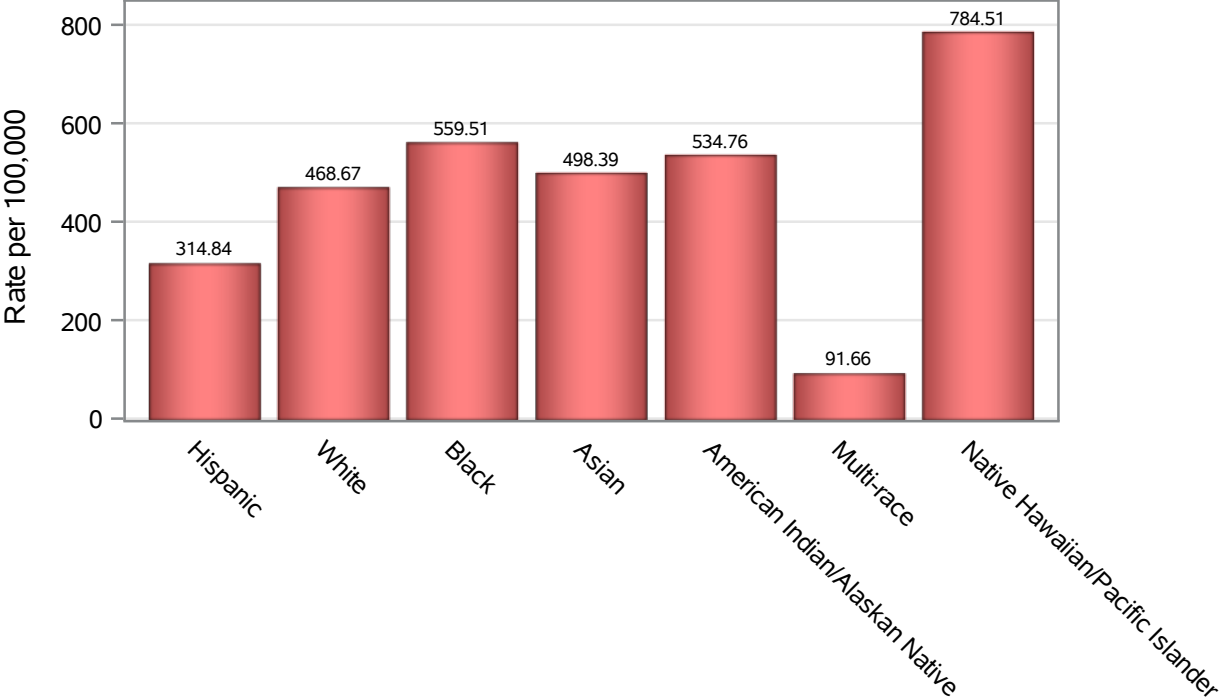


Investigations are ongoing; data are subject to change.

Reporting through 13FEB2023

Henderson zip codes include 89002, 89011, 89012, 89014, 89015, 89044, 89052, 89074, 89119, 89120, 89122, 89123, 89124, 89183.

Death Race/Ethnicity Rates in Henderson



Investigations are ongoing; data are subject to change.

Reporting through 13FEB2023

Henderson zip codes include 89002, 89011, 89012, 89014, 89015, 89044, 89052, 89074, 89119, 89120, 89122, 89123, 89124, 89183.

Table 6: Race/Ethnicity and COVID19 in Henderson

Case Status	Race Ethnicity Categories	N	%	Population	Rate per 100,000
Cases	Hispanic	28894	22.5	121649	23752
	White	47558	37.1	291462	16317
	Black	10261	8.0	38,069	26954
	Asian	11253	8.8	51,967	21654
	American Indian/Alaskan Native	603	0.5	2,618	23033
	Multi-race	484	0.4	19,638	2464.6
	Native Hawaiian/Pacific Islander	2145	1.7	4,079	52586
	Unknown	27022	21.1	.	.
Hospitalizations	Hispanic	1364	19.0	121649	1121.3
	White	3726	51.8	291462	1278.4
	Black	742	10.3	38,069	1949.1
	Asian	661	9.2	51,967	1272.0
	American Indian/Alaskan Native	34	0.5	2,618	1298.7
	Multi-race	37	0.5	19,638	188.41
	Native Hawaiian/Pacific Islander	142	2.0	4,079	3481.2
	Unknown	483	6.7	.	.
Deaths	Hispanic	383	16.7	121649	314.84
	White	1366	59.7	291462	468.67
	Black	213	9.3	38,069	559.51
	Asian	259	11.3	51,967	498.39
	American Indian/Alaskan Native	14	0.6	2,618	534.76
	Multi-race	18	0.8	19,638	91.66
	Native Hawaiian/Pacific Islander	32	1.4	4,079	784.51
	Unknown	3	0.1	.	.

Note1: Population data source for calculating rate estimates: U.S. Census Bureau, ACS 5-year estimate.

Note2: Rates for categories with fewer than 12 cases are suppressed due to high relative standard error.

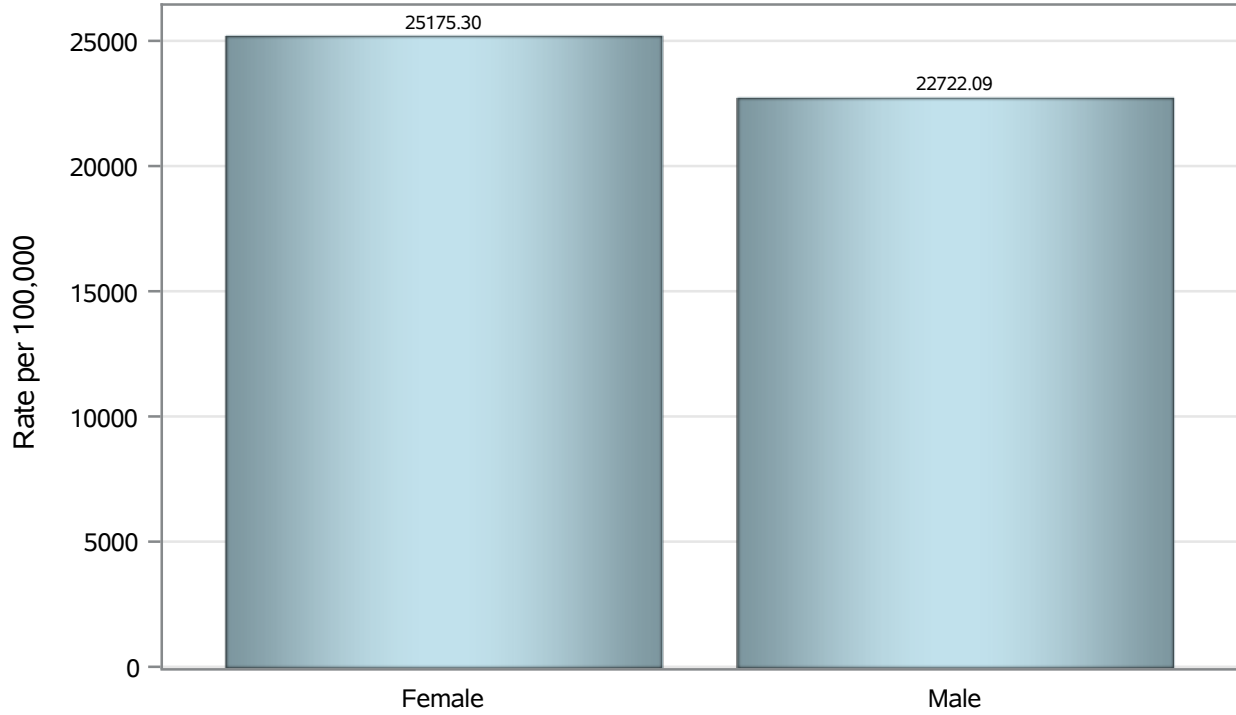
Note3: Hospitalizations are regardless of deceased status; Deaths are regardless of hospitalization status

Investigations are ongoing; data are subject to change.

Reporting through 13FEB2023

Henderson zip codes include 89002, 89011, 89012, 89014, 89015, 89044, 89052, 89074, 89119, 89120, 89122, 89123, 89124, 89183.

Case Birth Sex Rates in Henderson



Investigations are ongoing; data are subject to change.

Reporting through 13FEB2023

Henderson zip codes include 89002, 89011, 89012, 89014, 89015, 89044, 89052, 89074, 89119, 89120, 89122, 89123, 89124, 89183.

Hospitalization Birth Sex Rates in Henderson

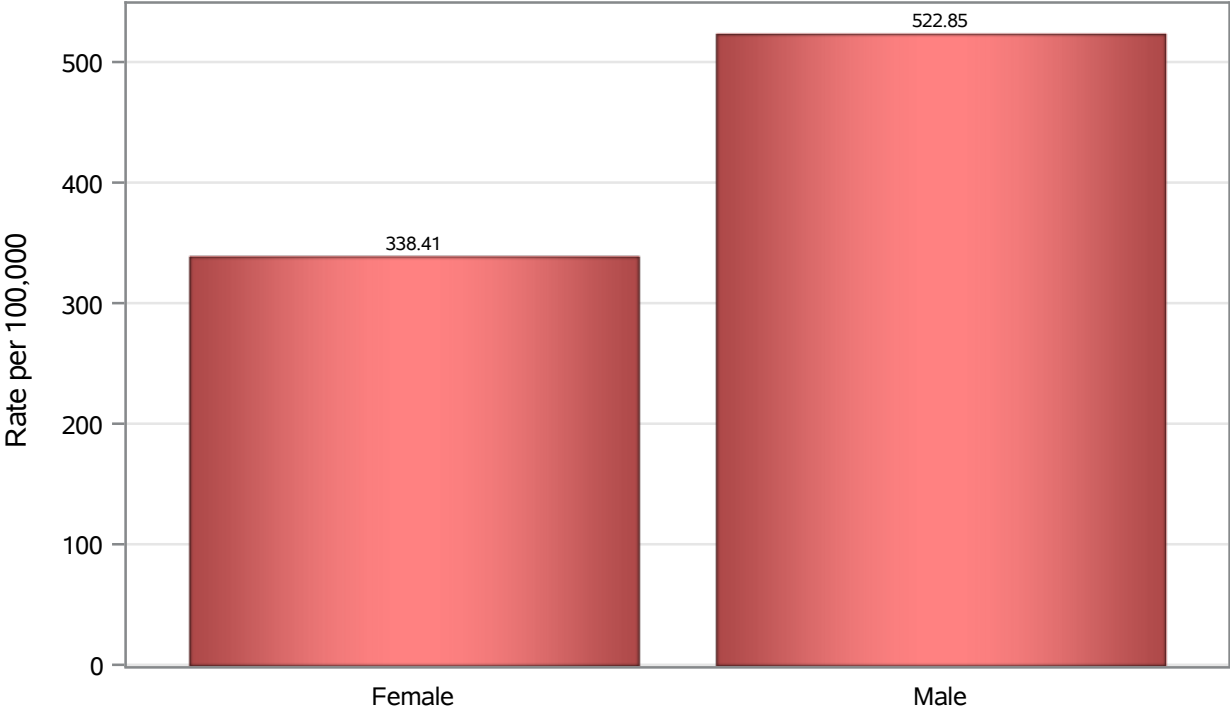


Investigations are ongoing; data are subject to change.

Reporting through 13FEB2023

Henderson zip codes include 89002, 89011, 89012, 89014, 89015, 89044, 89052, 89074, 89119, 89120, 89122, 89123, 89124, 89183.

Death Birth Sex Rates in Henderson



Investigations are ongoing; data are subject to change.

Reporting through 13FEB2023

Henderson zip codes include 89002, 89011, 89012, 89014, 89015, 89044, 89052, 89074, 89119, 89120, 89122, 89123, 89124, 89183.

Table 7: Birth Sex and COVID19 in Henderson

Case Status	Birth Sex Categories	N	%	Population	Rate per 100,000
Cases	Female	67176	52.4	266833	25175
	Male	60189	46.9	264892	22722
	Unknown	855	0.7	.	.
Hospitalizations	Female	3212	44.7	266833	1203.7
	Male	3966	55.2	264892	1497.2
	Unknown	11	0.2	.	.
Deaths	Female	903	39.5	266833	338.41
	Male	1385	60.5	264892	522.85

Note1: Population data source for calculating rate estimates: U.S. Census Bureau, ACS 5-year estimate.

Note2: Rates for categories with fewer than 12 cases are suppressed due to high relative standard error.

Note3: Hospitalizations are regardless of deceased status; Deaths are regardless of hospitalization status

Investigations are ongoing; data are subject to change.

Reporting through 13FEB2023

Henderson zip codes include 89002, 89011, 89012, 89014, 89015, 89044, 89052, 89074, 89119, 89120, 89122, 89123, 89124, 89183.