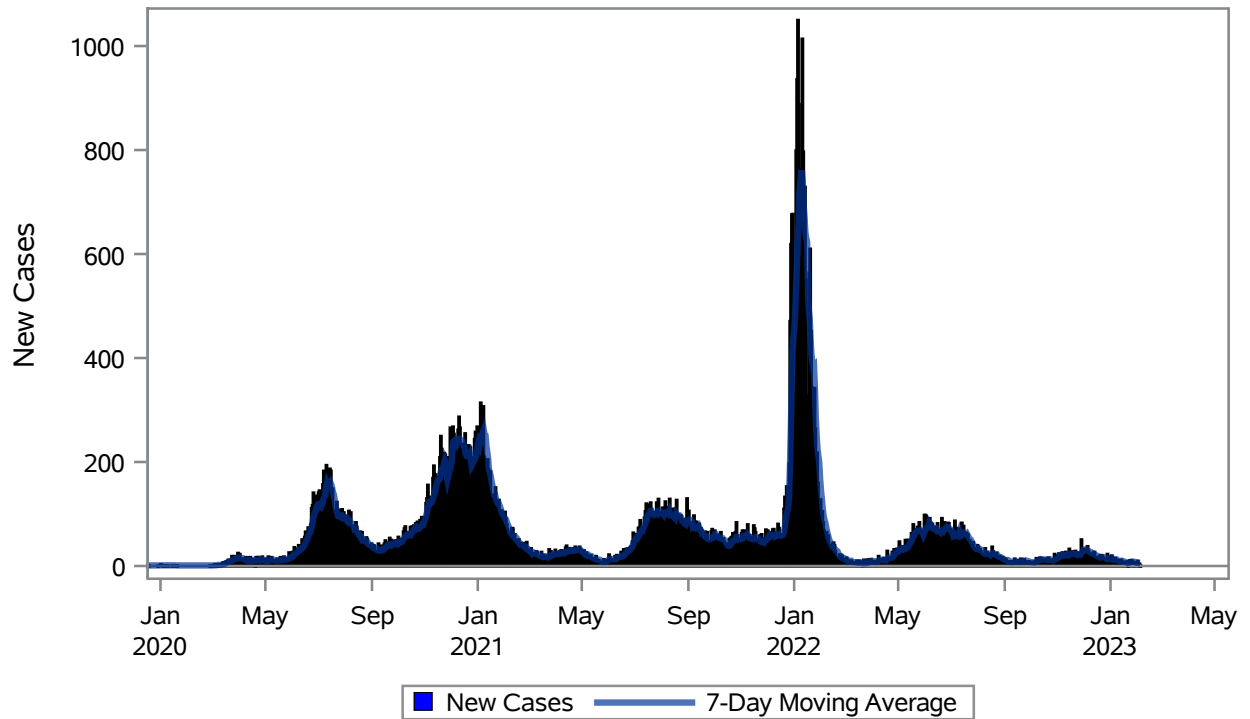


### COVID19 Cases for North Las Vegas, 7-Day Moving Average



Investigations are ongoing; data are subject to change.

Reporting through 06FEB2023

North Las Vegas zip codes include 89030, 89031, 89032, 89033, 89036, 89081, 89084, 89085, 89086, 89087.

**Table 1: New COVID19 Cases and 7-Day Moving Average in North Las Vegas, Previous Two Weeks**

Date (Daily)	New Cases	7-Day Moving Average
24JAN2023	11	7.14
25JAN2023	11	8.29
26JAN2023	7	8.29
27JAN2023	8	8.14
28JAN2023	2	8.29
29JAN2023	3	7.57
30JAN2023	5	6.71
31JAN2023	7	6.14
01FEB2023	10	6.00
02FEB2023	5	5.71
03FEB2023	4	5.14
04FEB2023	1	5.00

---

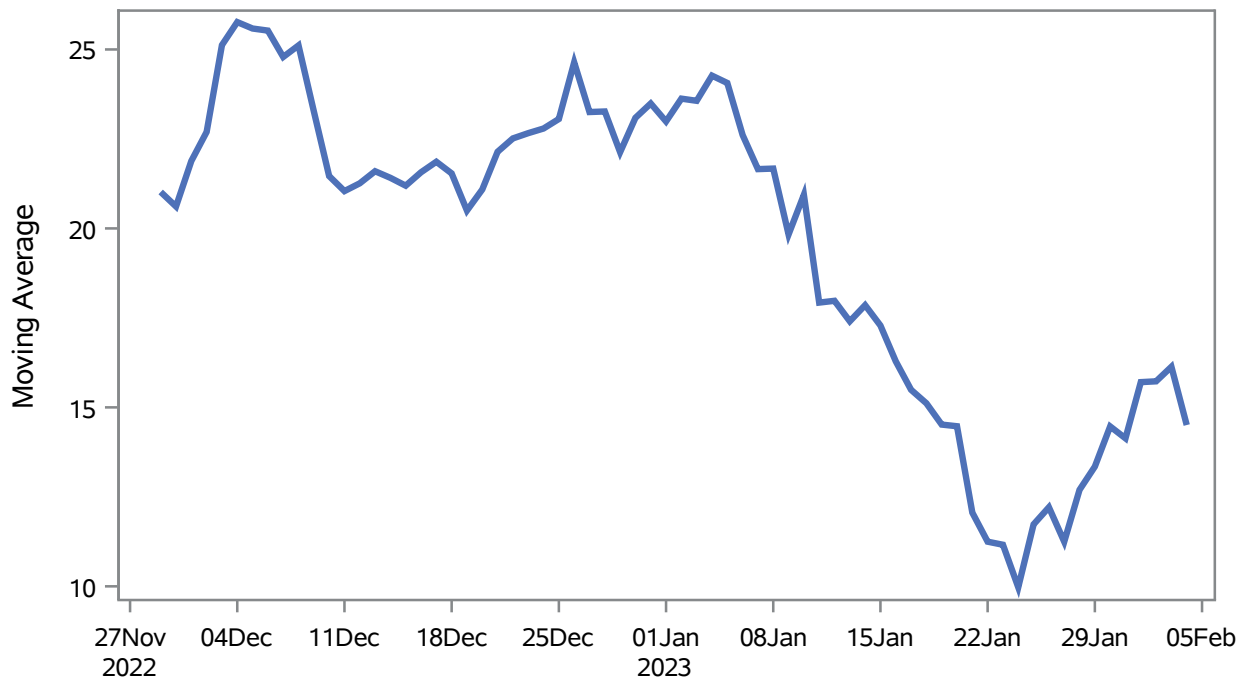
Note1: Event Date is calculated as follows based on completed information:  
1) Disease onset date 2) Disease diagnosis date 3) Lab result collection date 4) Report date to SNHD.

---

**Investigations are ongoing; data are subject to change.  
Reporting through 06FEB2023**

**North Las Vegas zip codes include 89030, 89031, 89032, 89033, 89036, 89081, 89084, 89085, 89086, 89087.**

### Percent of People Receiving COVID-19 Viral Tests Who Have Positive Results in North Las Vegas



Investigations are ongoing; data are subject to change.

Reporting through 06FEB2023

North Las Vegas zip codes include 89030, 89031, 89032, 89033, 89036, 89081, 89084, 89085, 89086, 89087.

**Table 2: Percent of People Receiving COVID-19 Viral Tests Who Have Positive Results in North Las Vegas**

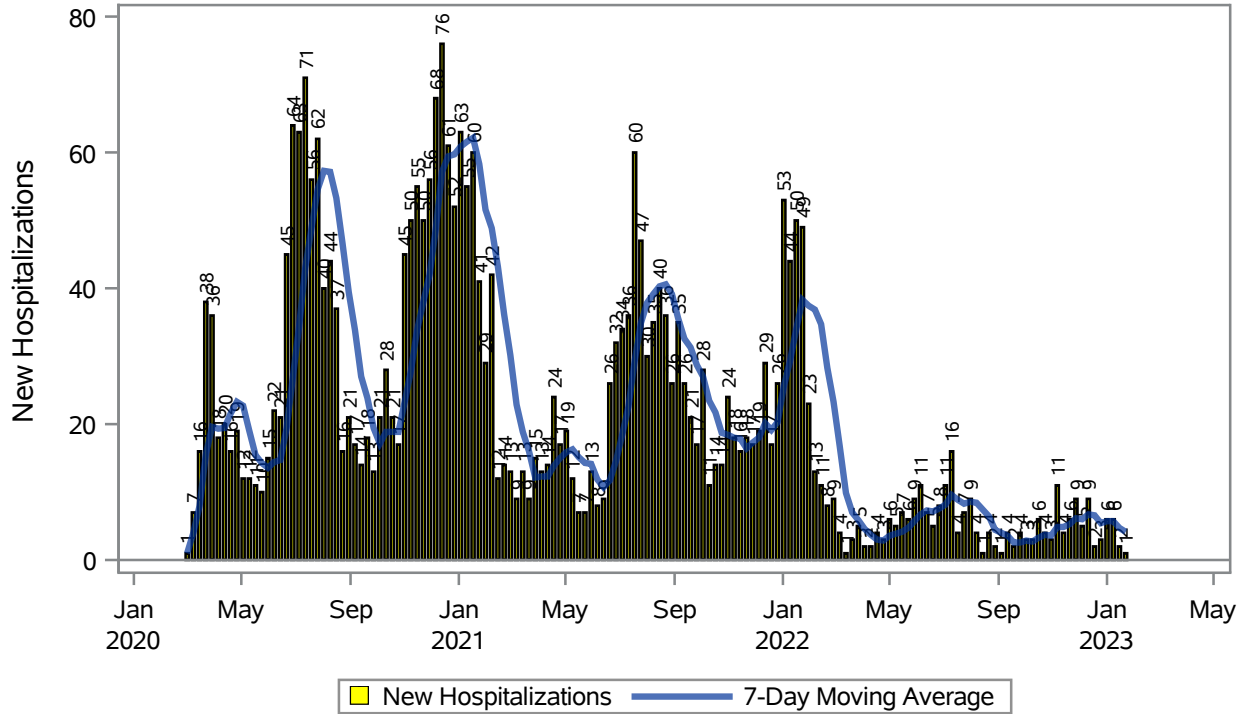
Collection Date	Positive	Negative	Equivocal	Total	% Positivity	7-Day Moving Average
21JAN2023	5	49		54	9.26	12.1
22JAN2023	6	54		60	10.00	11.2
23JAN2023	11	88		99	11.11	11.2
24JAN2023	16	179		195	8.21	9.97
25JAN2023	17	77		94	18.09	11.7
26JAN2023	17	82		99	17.17	12.2
27JAN2023	7	136		143	4.90	11.2
28JAN2023	13	54		67	19.40	12.7
29JAN2023	8	47		55	14.55	13.3
30JAN2023	22	94		116	18.97	14.5
31JAN2023	10	160		170	5.88	14.1
01FEB2023	25	61		86	29.07	15.7
02FEB2023	13	62		75	17.33	15.7
03FEB2023	12	143		155	7.74	16.1
04FEB2023	4	46		50	8.00	14.5

Note: Testing Data includes a 3 day delay

**Investigations are ongoing; data are subject to change.  
Reporting through 06FEB2023**

**North Las Vegas zip codes include 89030, 89031, 89032, 89033, 89036, 89081, 89084, 89085, 89086, 89087.**

### COVID19 Hospitalizations for North Las Vegas, 7-Day Moving Average



Investigations are ongoing; data are subject to change.

Reporting through 06FEB2023

North Las Vegas zip codes include 89030, 89031, 89032, 89033, 89036, 89081, 89084, 89085, 89086, 89087.

**Table 3: New COVID19-Related Hospitalizations and 7-Day Moving Average in North Las Vegas, previous month**

Week	Hospitalizations	7-Day Moving Average
08JAN2023	6	5.71
15JAN2023	2	4.71
22JAN2023	1	4.14

---

Note1: Admission Date is calculated as follows based on completed information:  
A) COVID19 Case is hospitalized B) COVID19 Case has a hospital admission date.

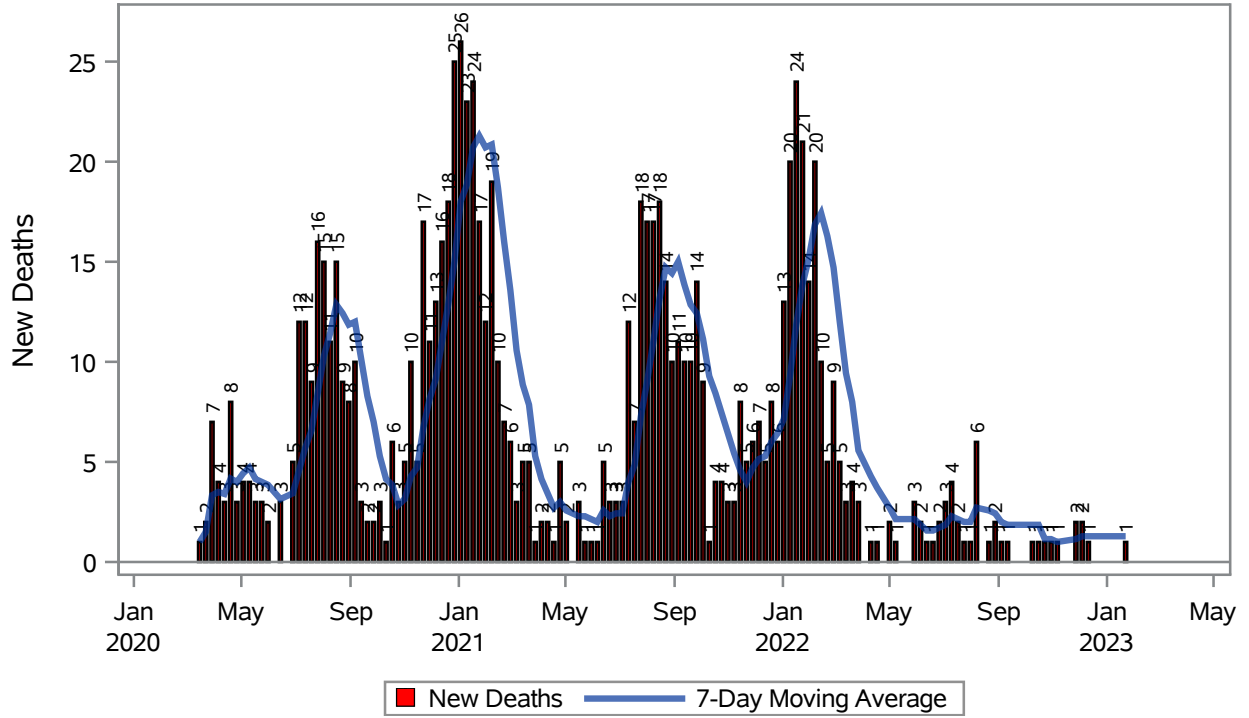
If admission date is missing, then the following is substituted temporarily, in order:  
1) Disease onset date 2) Disease diagnosis date 3) Lab result collection date 4) Report date to SNHD.

---

**Investigations are ongoing; data are subject to change.  
Reporting through 06FEB2023**

**North Las Vegas zip codes include 89030, 89031, 89032, 89033, 89036, 89081, 89084, 89085, 89086, 89087.**

### COVID19 Deaths for North Las Vegas, 7-Day Moving Average



Investigations are ongoing; data are subject to change.  
Reporting through 06FEB2023

North Las Vegas zip codes include 89030, 89031, 89032, 89033, 89036, 89081, 89084, 89085, 89086, 89087.

**Table 4: New COVID19-Related Deaths and 7-Day Moving Average in North Las Vegas, Previous Month**

Week	Deaths	7-Day Moving Average
22JAN2023	1	1.29

---

Note1: Date of Death is calculated as follows based on completed information:  
A) COVID19 Case is reported as deceased B) COVID19 Case has a reported date of death.

If date of death is missing, then the following is substituted temporarily, in order:  
1) Disease onset date 2) Disease diagnosis date  
3) Lab result collection date 4) Report date to SNHD.

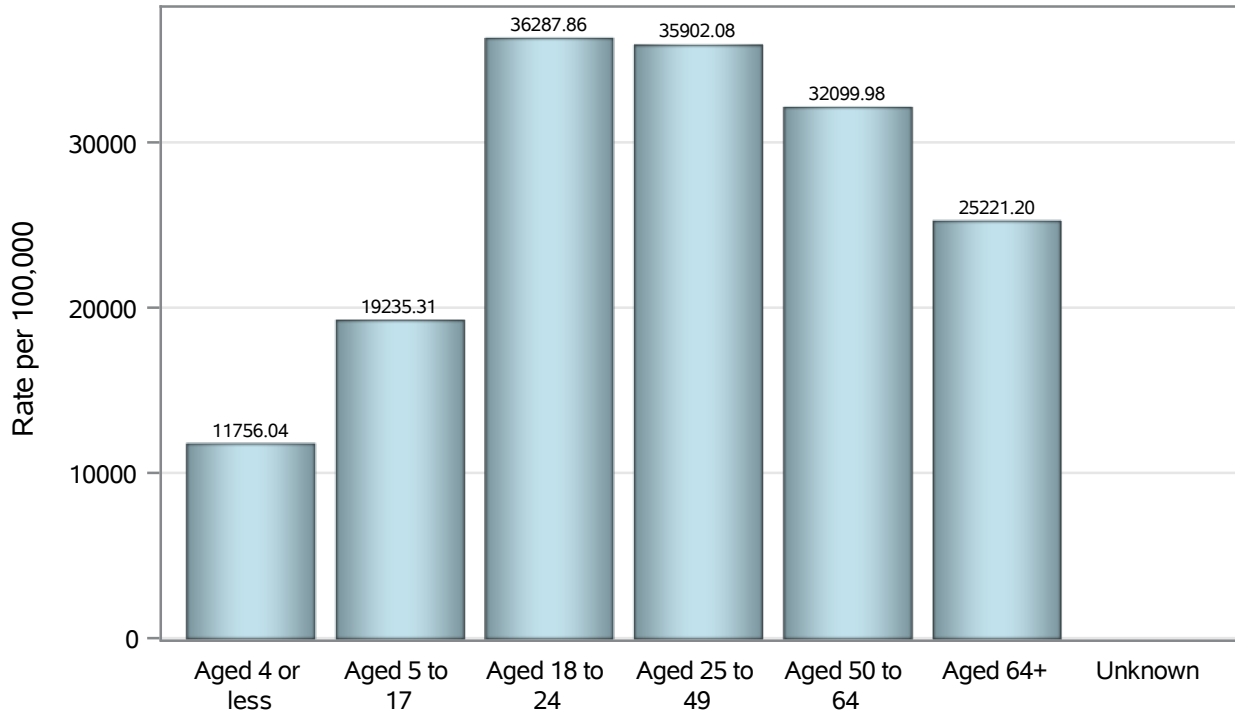
---

**Investigations are ongoing; data are subject to change.  
Reporting through 06FEB2023**

**North Las Vegas zip codes include 89030, 89031, 89032, 89033, 89036, 89081, 89084, 89085, 89086, 89087.**



### Case Age Rates in North Las Vegas

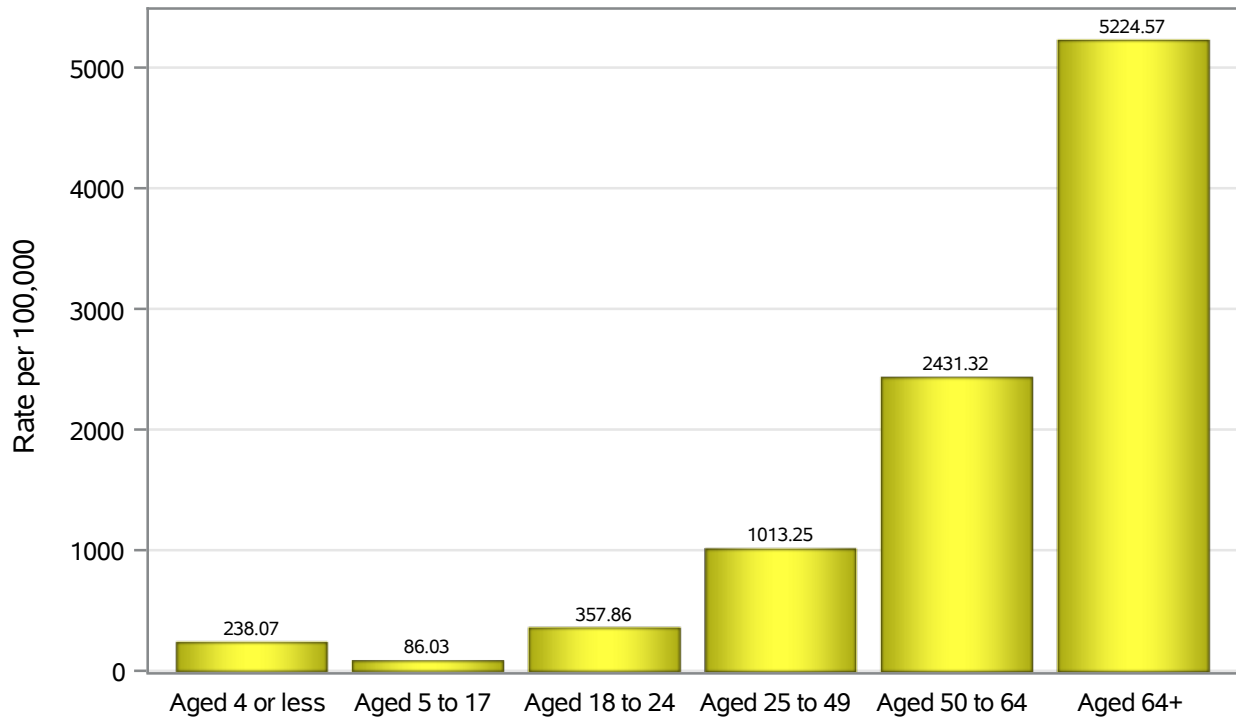


Investigations are ongoing; data are subject to change.

Reporting through 06FEB2023

North Las Vegas zip codes include 89030, 89031, 89032, 89033, 89036, 89081, 89084, 89085, 89086, 89087.

### Hospitalization Age Rates in North Las Vegas

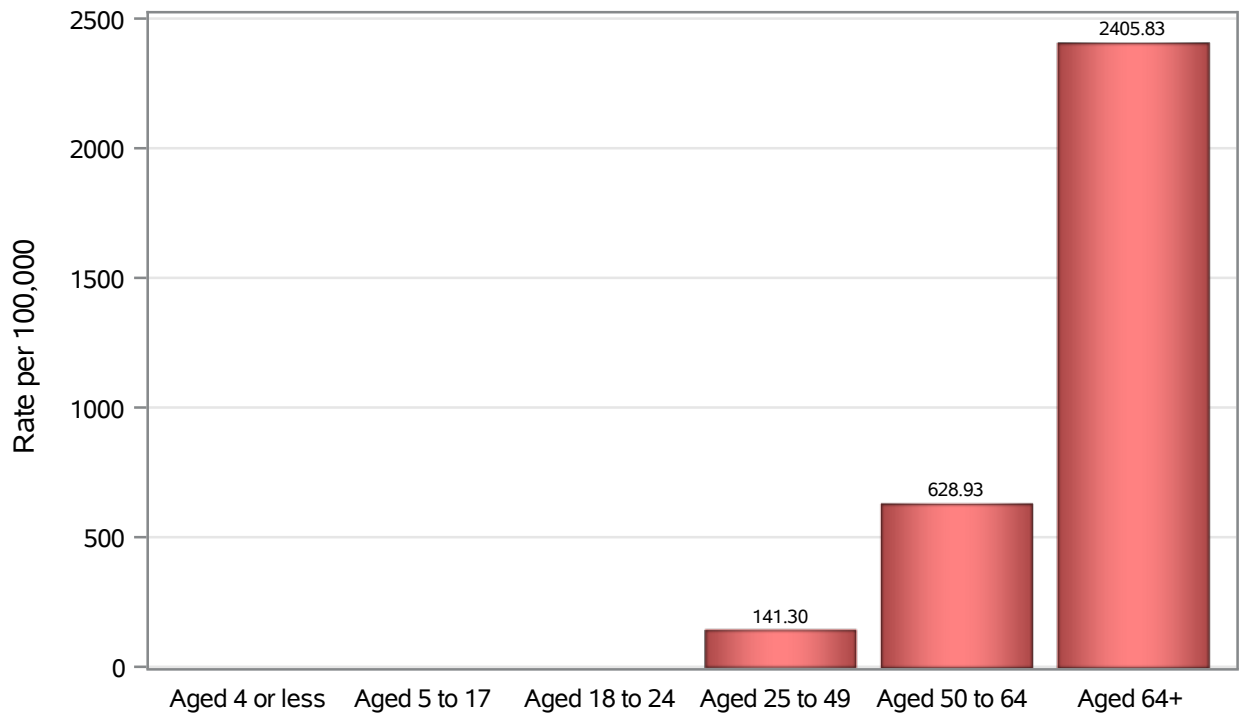


Investigations are ongoing; data are subject to change.

Reporting through 06FEB2023

North Las Vegas zip codes include 89030, 89031, 89032, 89033, 89036, 89081, 89084, 89085, 89086, 89087.

### Death Age Rates in North Las Vegas



Investigations are ongoing; data are subject to change.

Reporting through 06FEB2023

North Las Vegas zip codes include 89030, 89031, 89032, 89033, 89036, 89081, 89084, 89085, 89086, 89087.

**Table 5: Age and COVID19 in North Las Vegas**

Case Status	Age Categories	N	%	Population	Rate per 100,000
Cases	Aged 4 or less	2074	3.1	17,642	11756
	Aged 5 to 17	9614	14.2	49,981	19235
	Aged 18 to 24	8315	12.3	22,914	36288
	Aged 25 to 49	29728	44.0	82,803	35902
	Aged 50 to 64	11790	17.5	36,729	32100
	Aged 64+	5986	8.9	23,734	25221
	Unknown	15	0.0	.	.
Hospitalizations	Aged 4 or less	42	1.3	17,642	238.07
	Aged 5 to 17	43	1.4	49,981	86.03
	Aged 18 to 24	82	2.6	22,914	357.86
	Aged 25 to 49	839	26.7	82,803	1013.2
	Aged 50 to 64	893	28.4	36,729	2431.3
	Aged 64+	1240	39.5	23,734	5224.6
	Deaths	Aged 4 or less	2	0.2	17,642
Aged 5 to 17		1	0.1	49,981	.
Aged 18 to 24		2	0.2	22,914	.
Aged 25 to 49		117	12.7	82,803	141.30
Aged 50 to 64		231	25.0	36,729	628.93
Aged 64+		571	61.8	23,734	2405.8

Note1: Population data source for calculating rate estimates: U.S. Census Bureau, ACS 5-year estimate.

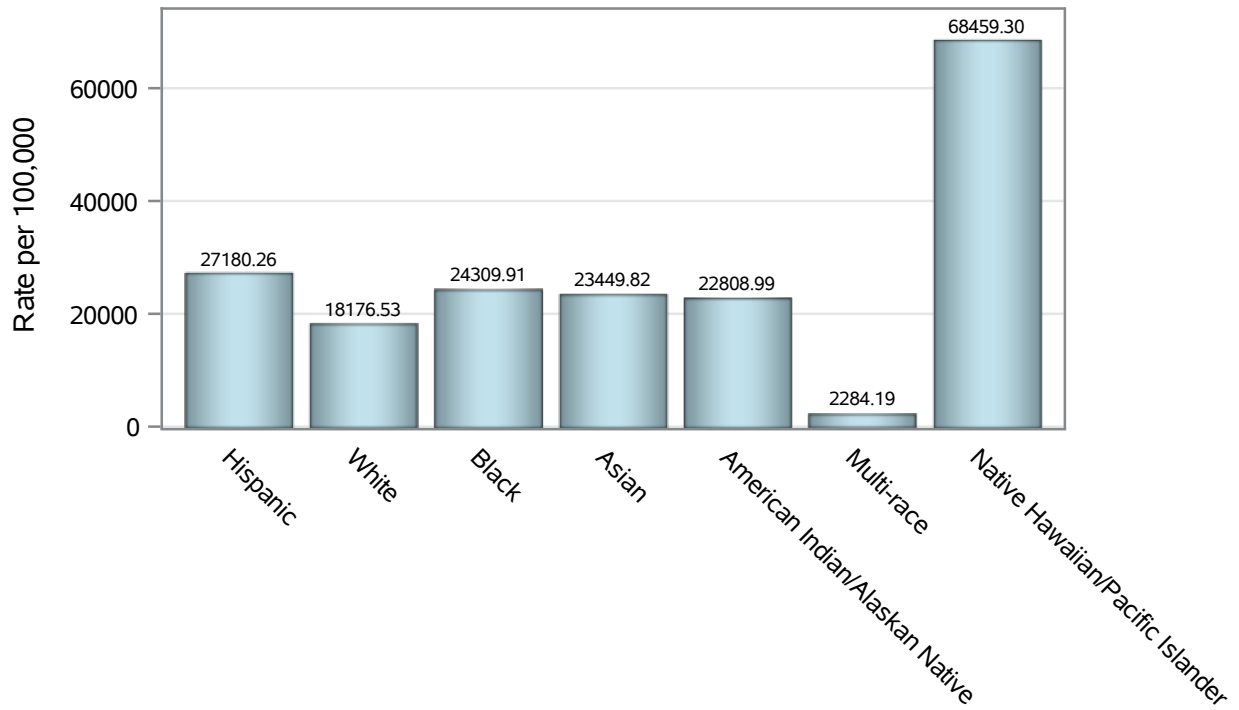
Note2: Rates for categories with fewer than 12 cases are suppressed due to high relative standard error.

Note3: Hospitalizations are regardless of deceased status; Deaths are regardless of hospitalization status

**Investigations are ongoing; data are subject to change.  
Reporting through 06FEB2023**

**North Las Vegas zip codes include 89030, 89031, 89032, 89033, 89036, 89081, 89084, 89085, 89086, 89087.**

### Case Race/Ethnicity Rates in North Las Vegas

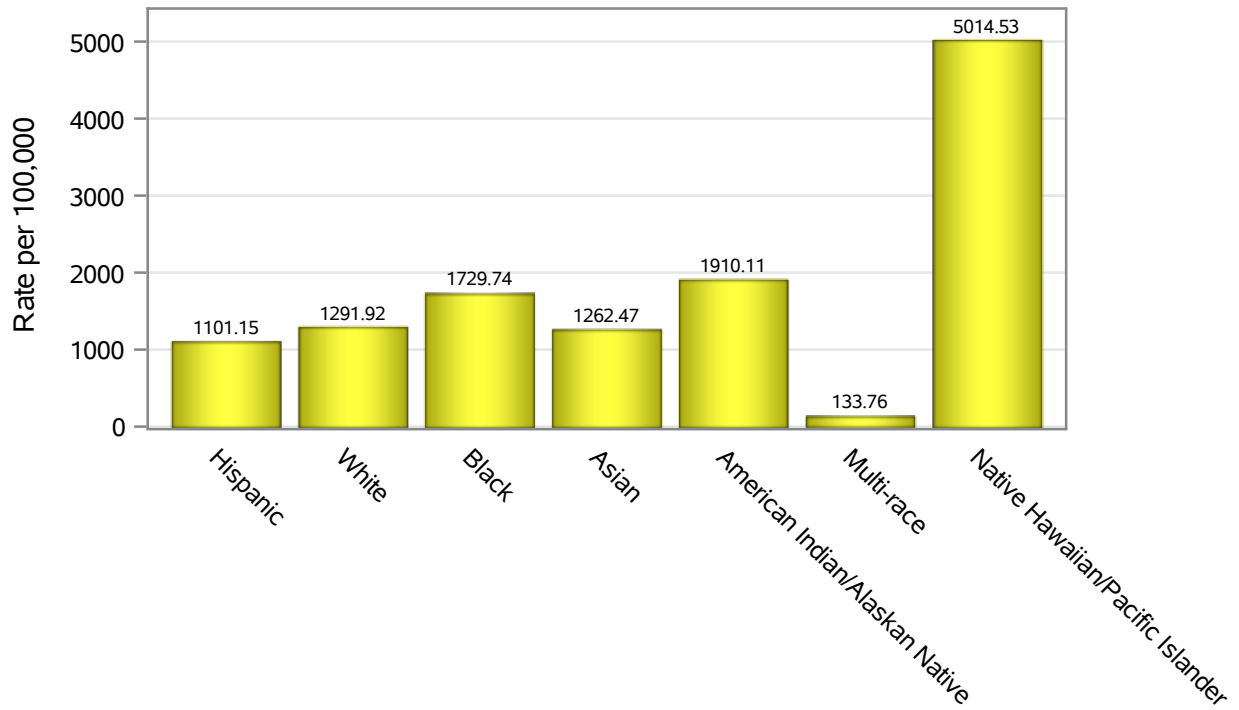


Investigations are ongoing; data are subject to change.

Reporting through 06FEB2023

North Las Vegas zip codes include 89030, 89031, 89032, 89033, 89036, 89081, 89084, 89085, 89086, 89087.

### Hospitalization Race/Ethnicity Rates in North Las Vegas

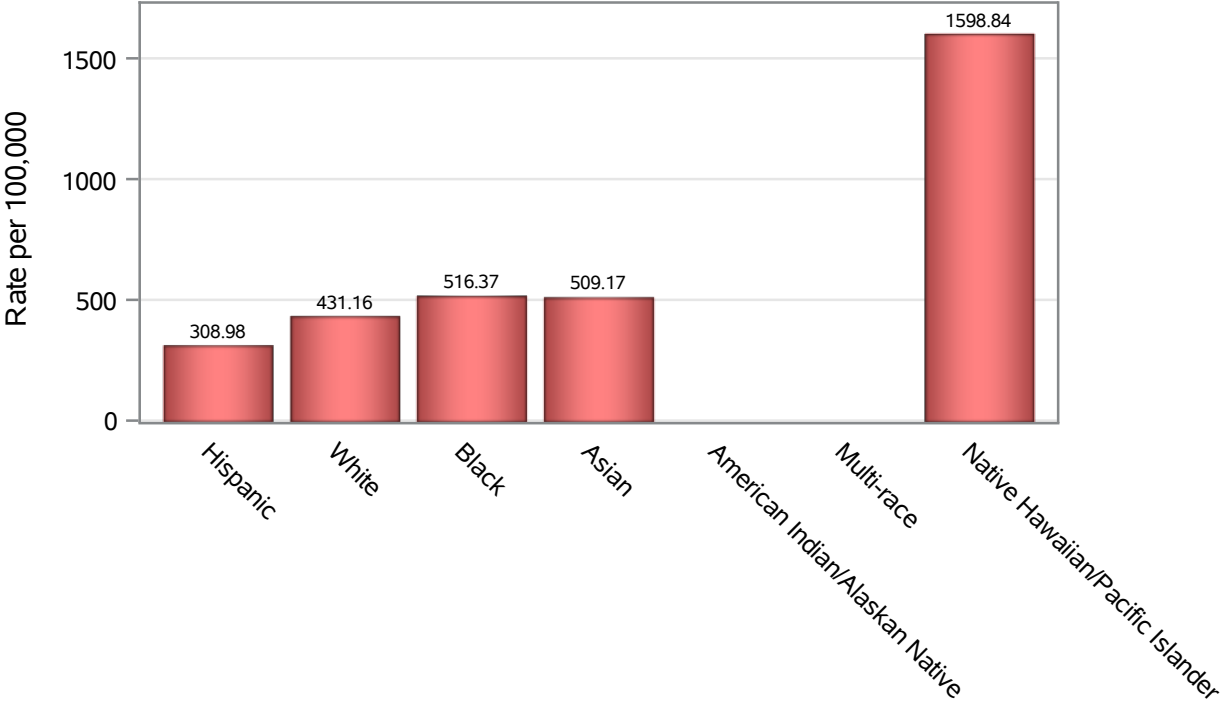


Investigations are ongoing; data are subject to change.

Reporting through 06FEB2023

North Las Vegas zip codes include 89030, 89031, 89032, 89033, 89036, 89081, 89084, 89085, 89086, 89087.

### Death Race/Ethnicity Rates in North Las Vegas



Investigations are ongoing; data are subject to change.

Reporting through 06FEB2023

North Las Vegas zip codes include 89030, 89031, 89032, 89033, 89036, 89081, 89084, 89085, 89086, 89087.

**Table 6: Race/Ethnicity and COVID19 in North Las Vegas**

Case Status	Race Ethnicity Categories	N	%	Population	Rate per 100,000
Cases	Hispanic	26214	38.8	96,445	27180
	White	11551	17.1	63,549	18177
	Black	11440	16.9	47,059	24310
	Asian	3362	5.0	14,337	23450
	American Indian/Alaskan Native	203	0.3	890	22809
	Multi-race	222	0.3	9,719	2284.2
	Native Hawaiian/Pacific Islander	942	1.4	1,376	68459
	Unknown	13588	20.1	.	.
Hospitalizations	Hispanic	1062	33.8	96,445	1101.1
	White	821	26.2	63,549	1291.9
	Black	814	25.9	47,059	1729.7
	Asian	181	5.8	14,337	1262.5
	American Indian/Alaskan Native	17	0.5	890	1910.1
	Multi-race	13	0.4	9,719	133.76
	Native Hawaiian/Pacific Islander	69	2.2	1,376	5014.5
	Unknown	162	5.2	.	.
Deaths	Hispanic	298	32.3	96,445	308.98
	White	274	29.7	63,549	431.16
	Black	243	26.3	47,059	516.37
	Asian	73	7.9	14,337	509.17
	American Indian/Alaskan Native	6	0.6	890	.
	Multi-race	7	0.8	9,719	.
	Native Hawaiian/Pacific Islander	22	2.4	1,376	1598.8
	Unknown	1	0.1	.	.

Note1: Population data source for calculating rate estimates: U.S. Census Bureau, ACS 5-year estimate.

Note2: Rates for categories with fewer than 12 cases are suppressed due to high relative standard error.

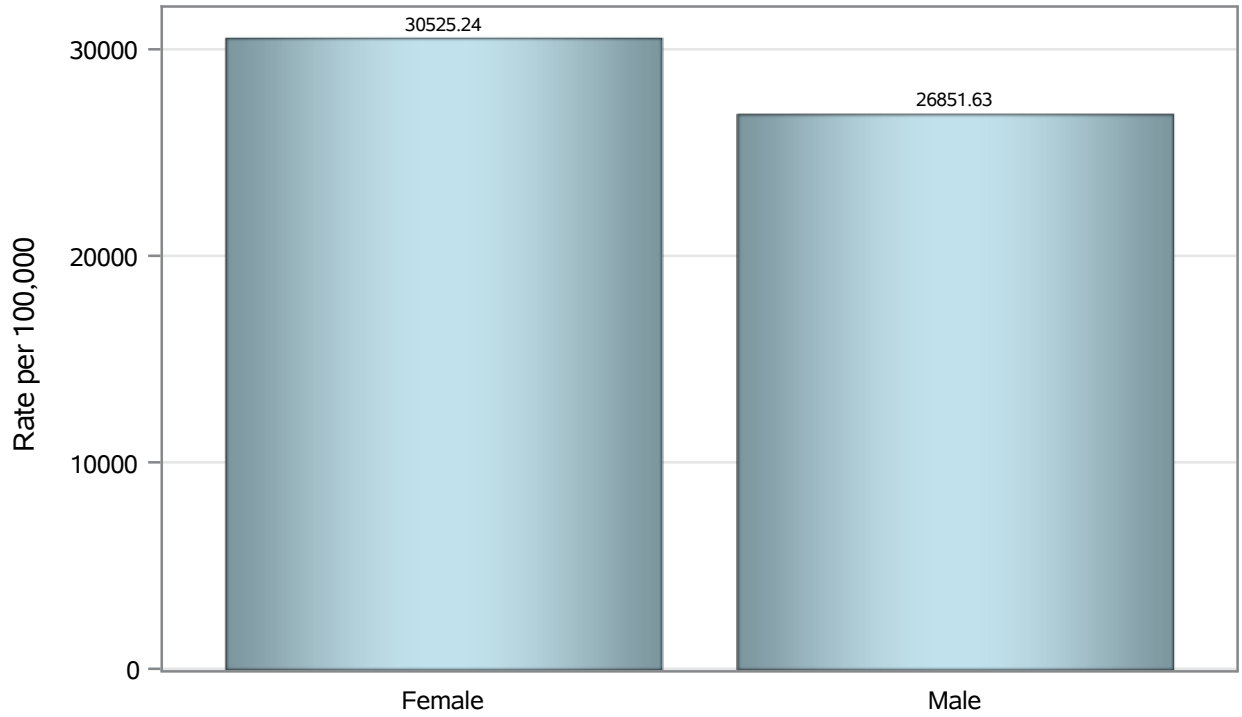
Note3: Hospitalizations are regardless of deceased status; Deaths are regardless of hospitalization status

**Investigations are ongoing; data are subject to change.  
Reporting through 06FEB2023**

**North Las Vegas zip codes include 89030, 89031, 89032, 89033, 89036, 89081, 89084, 89085, 89086, 89087.**



### Case Birth Sex Rates in North Las Vegas

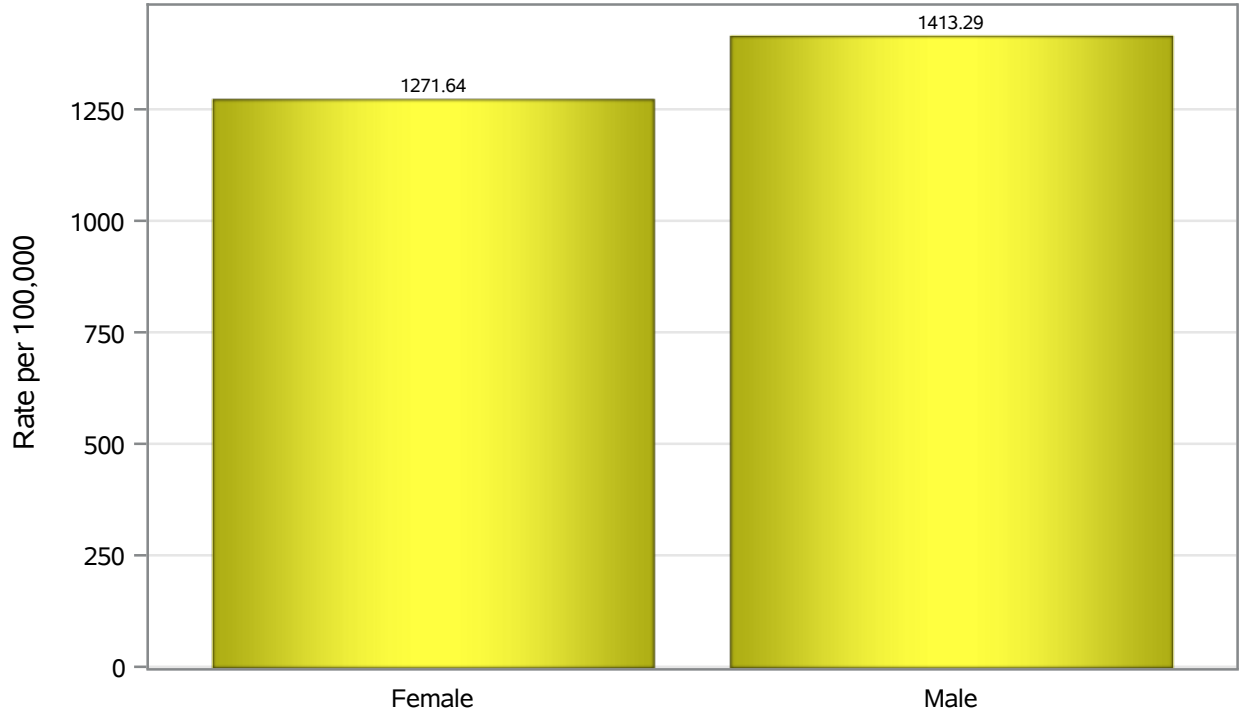


Investigations are ongoing; data are subject to change.

Reporting through 06FEB2023

North Las Vegas zip codes include 89030, 89031, 89032, 89033, 89036, 89081, 89084, 89085, 89086, 89087.

### Hospitalization Birth Sex Rates in North Las Vegas

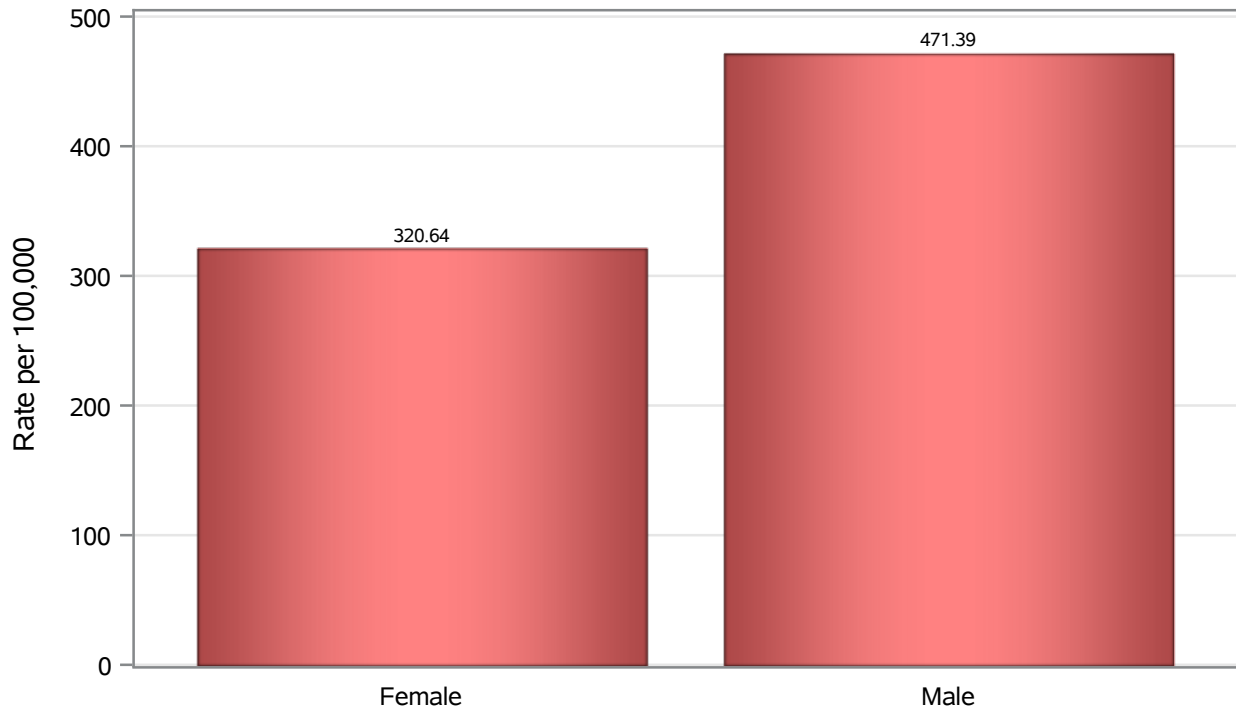


Investigations are ongoing; data are subject to change.

Reporting through 06FEB2023

North Las Vegas zip codes include 89030, 89031, 89032, 89033, 89036, 89081, 89084, 89085, 89086, 89087.

### Death Birth Sex Rates in North Las Vegas



Investigations are ongoing; data are subject to change.

Reporting through 06FEB2023

North Las Vegas zip codes include 89030, 89031, 89032, 89033, 89036, 89081, 89084, 89085, 89086, 89087.

**Table 7: Birth Sex and COVID19 in North Las Vegas**

Case Status	Birth Sex Categories	N	%	Population	Rate per 100,000
Cases	Female	36271	53.7	118823	30525
	Male	30874	45.7	114980	26852
	Unknown	377	0.6	.	.
Hospitalizations	Female	1511	48.1	118823	1271.6
	Male	1625	51.8	114980	1413.3
	Unknown	3	0.1	.	.
Deaths	Female	381	41.2	118823	320.64
	Male	542	58.7	114980	471.39
	Unknown	1	0.1	.	.

Note1: Population data source for calculating rate estimates: U.S. Census Bureau, ACS 5-year estimate.

Note2: Rates for categories with fewer than 12 cases are suppressed due to high relative standard error.

Note3: Hospitalizations are regardless of deceased status; Deaths are regardless of hospitalization status

**Investigations are ongoing; data are subject to change.  
Reporting through 06FEB2023**

**North Las Vegas zip codes include 89030, 89031, 89032, 89033, 89036, 89081, 89084, 89085, 89086, 89087.**