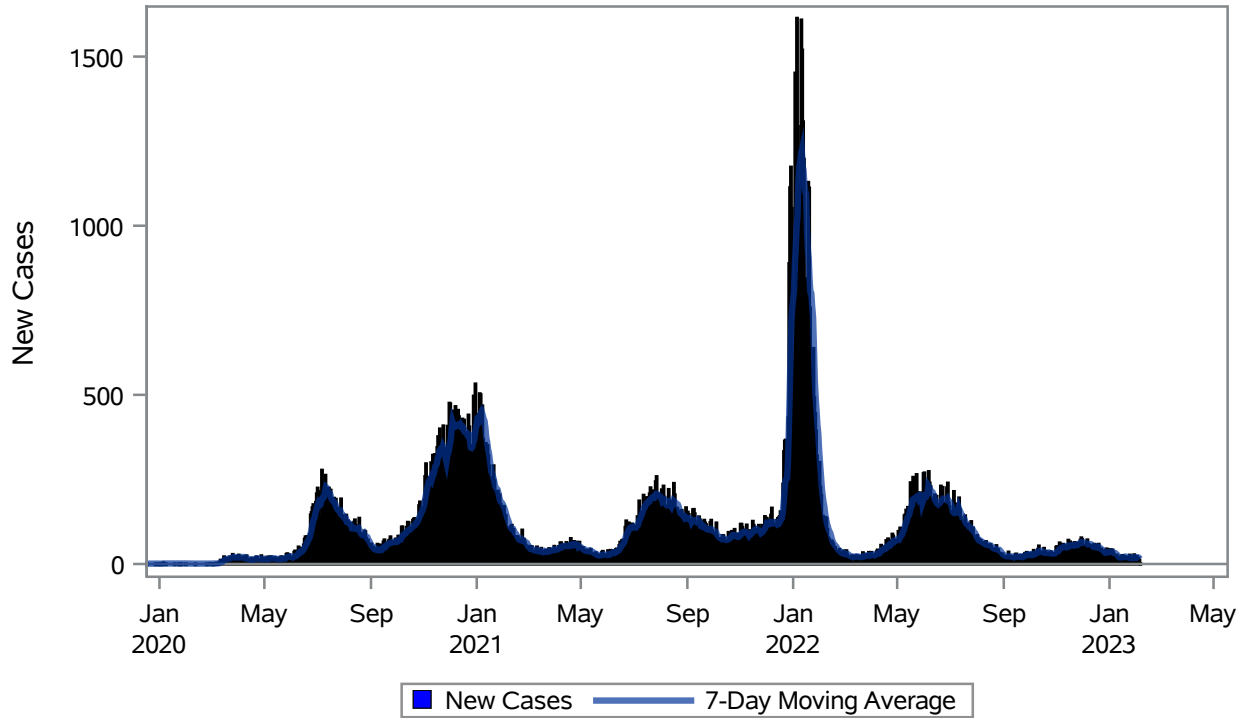


COVID19 Cases for Henderson, 7-Day Moving Average



Investigations are ongoing; data are subject to change.
Reporting through 06FEB2023

Henderson zip codes include 89002, 89011, 89012, 89014, 89015, 89044, 89052, 89074, 89119, 89120, 89122, 89123, 89124, 89183.

Table 1: New COVID19 Cases and 7-Day Moving Average in Henderson, Previous Two Weeks

Date (Daily)	New Cases	7-Day Moving Average
24JAN2023	27	19.71
25JAN2023	13	18.57
26JAN2023	17	18.00
27JAN2023	14	17.00
28JAN2023	22	17.86
29JAN2023	28	19.71
30JAN2023	14	19.29
31JAN2023	19	18.14
01FEB2023	23	19.57
02FEB2023	12	18.86
03FEB2023	18	19.43
04FEB2023	12	18.00

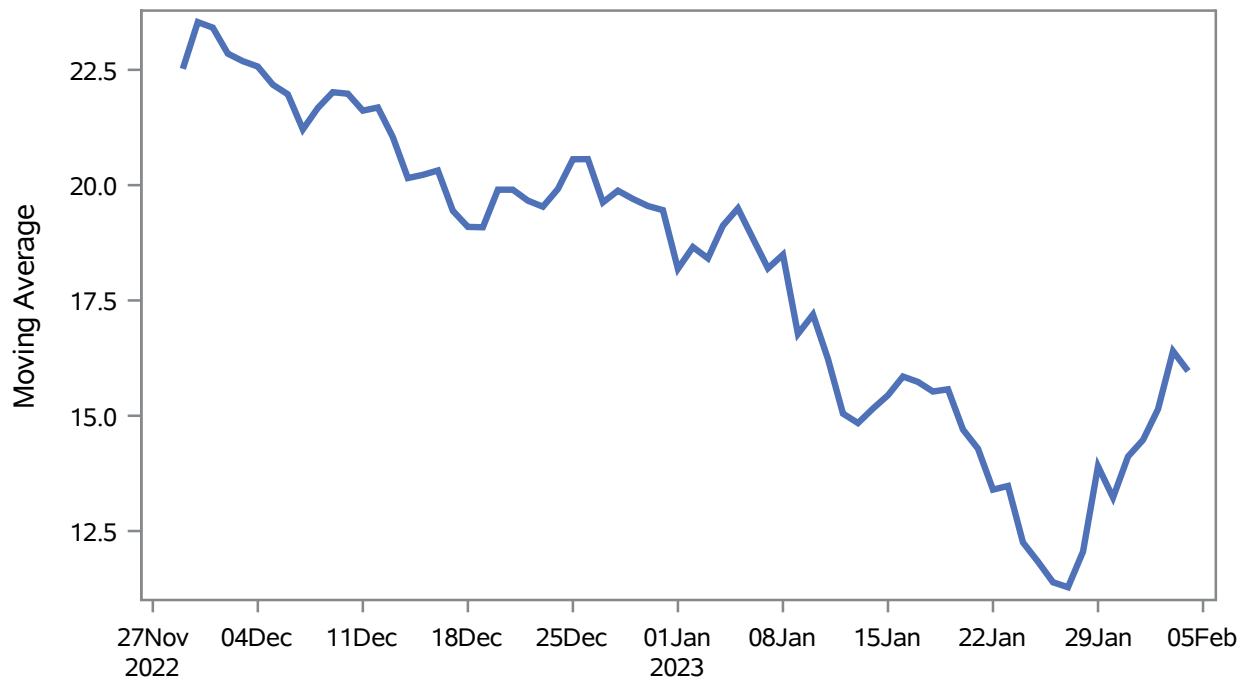
Note1: Event Date is calculated as follows based on completed information:
1) Disease onset date 2) Disease diagnosis date 3) Lab result collection date 4) Report date to SNHD.

Investigations are ongoing; data are subject to change.

Reporting through 06FEB2023

Henderson zip codes include 89002, 89011, 89012, 89014, 89015, 89044, 89052, 89074, 89119, 89120, 89122, 89123, 89124, 89183.

Percent of People Receiving COVID-19 Viral Tests Who Have Positive Results in Henderson



Investigations are ongoing; data are subject to change.

Reporting through 06FEB2023

Henderson zip codes include 89002, 89011, 89012, 89014, 89015, 89044, 89052, 89074, 89119, 89120, 89122, 89123, 89124, 89183.

Table 2: Percent of People Receiving COVID-19 Viral Tests Who Have Positive Results in Henderson

Collection Date	Positive	Negative	Equivocal	Total	% Positivity	7-Day Moving Average
21JAN2023	12	83		95	12.63	14.3
22JAN2023	10	73		83	12.05	13.4
23JAN2023	24	131		155	15.48	13.5
24JAN2023	19	185		204	9.31	12.3
25JAN2023	17	136		153	11.11	11.8
26JAN2023	17	151		168	10.12	11.4
27JAN2023	10	111		121	8.26	11.3
28JAN2023	22	100		122	18.03	12.1
29JAN2023	23	69		92	25.00	13.9
30JAN2023	16	133		149	10.74	13.2
31JAN2023	23	125		148	15.54	14.1
01FEB2023	18	114		132	13.64	14.5
02FEB2023	21	121		142	14.79	15.1
03FEB2023	21	102		123	17.07	16.4
04FEB2023	12	68		80	15.00	16.0

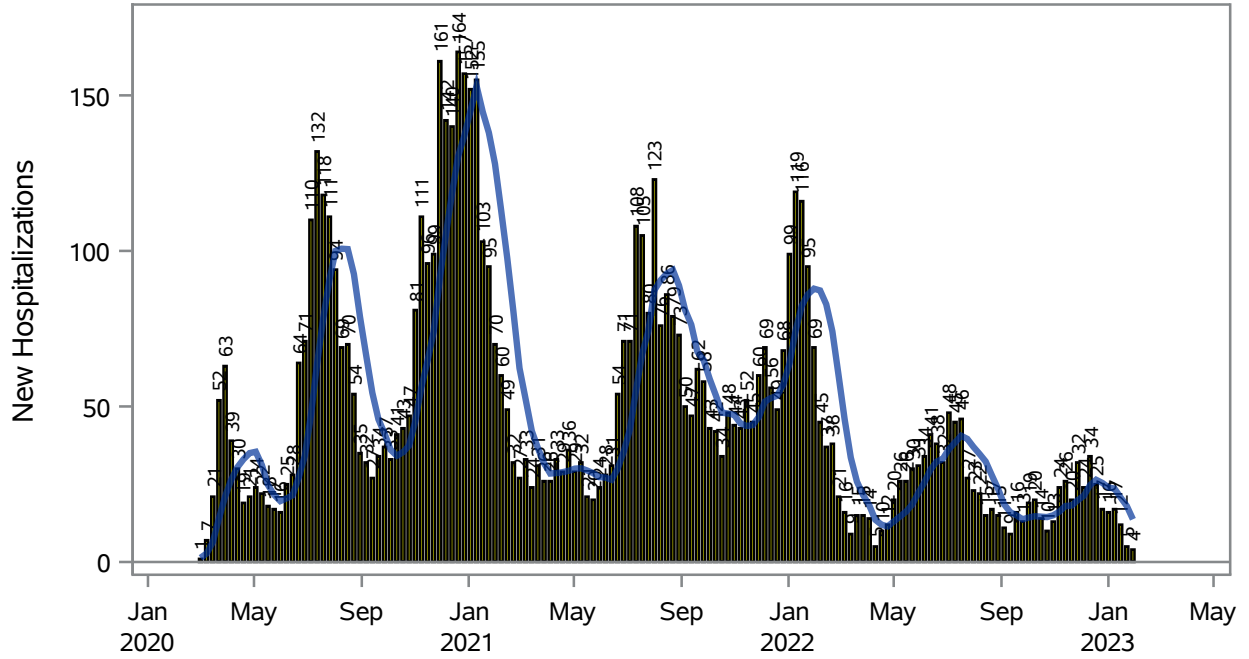
Note: Testing Data includes a 3 day delay

Investigations are ongoing; data are subject to change.

Reporting through 06FEB2023

Henderson zip codes include 89002, 89011, 89012, 89014, 89015, 89044, 89052, 89074, 89119, 89120, 89122, 89123, 89124, 89183.

COVID19 Hospitalizations for Henderson, 7-Day Moving Average



New Hospitalizations
 7-Day Moving Average

Investigations are ongoing; data are subject to change.

Reporting through 06FEB2023

Henderson zip codes include 89002, 89011, 89012, 89014, 89015, 89044, 89052, 89074, 89119, 89120, 89122, 89123, 89124, 89183.

Table 3: New COVID19-Related Hospitalizations and 7-Day Moving Average in Henderson, previous month

Week	Hospitalizations	7-Day Moving Average
08JAN2023	17	23.6
15JAN2023	12	20.7
22JAN2023	5	18.0
29JAN2023	4	13.7

Note1: Admission Date is calculated as follows based on completed information:
A) COVID19 Case is hospitalized B) COVID19 Case has a hospital admission date.

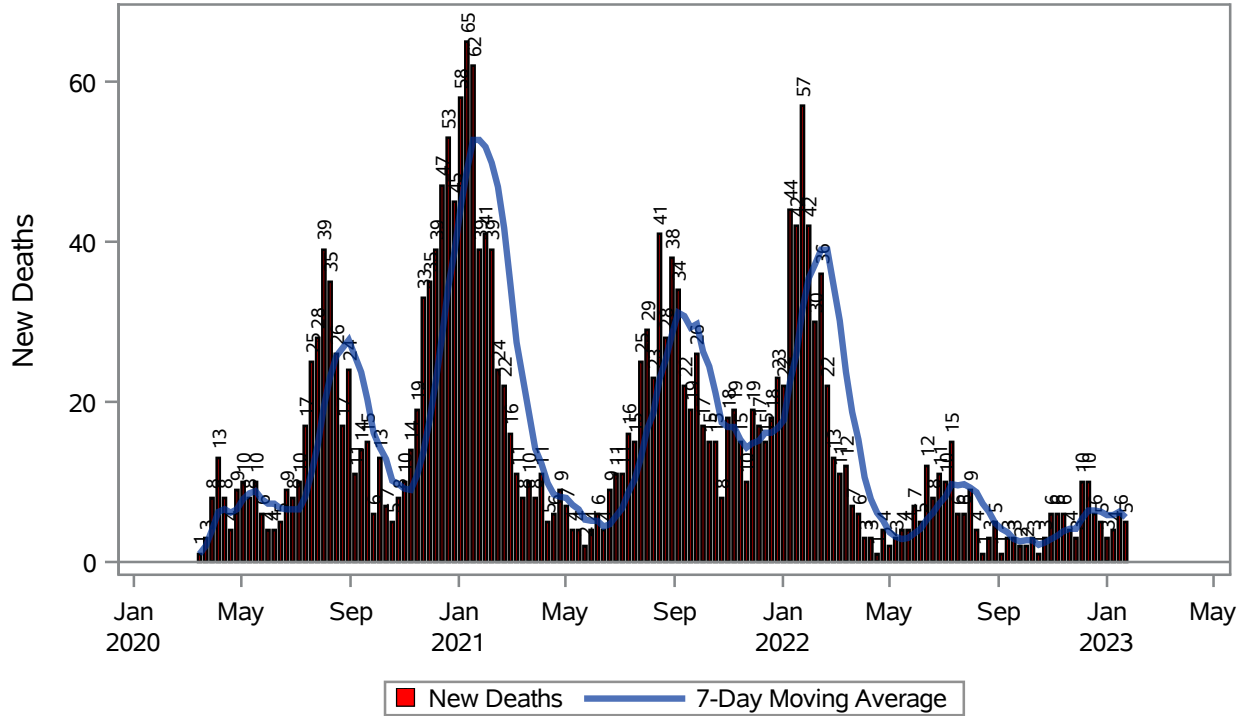
If admission date is missing, then the following is substituted temporarily, in order:
1) Disease onset date 2) Disease diagnosis date 3) Lab result collection date 4) Report date to SNHD.

Investigations are ongoing; data are subject to change.

Reporting through 06FEB2023

Henderson zip codes include 89002, 89011, 89012, 89014, 89015, 89044, 89052, 89074, 89119, 89120, 89122, 89123, 89124, 89183.

COVID19 Deaths for Henderson, 7-Day Moving Average



Investigations are ongoing; data are subject to change.

Reporting through 06FEB2023

Henderson zip codes include 89002, 89011, 89012, 89014, 89015, 89044, 89052, 89074, 89119, 89120, 89122, 89123, 89124, 89183.

Table 4: New COVID19-Related Deaths and 7-Day Moving Average in Henderson, Previous Month

Week	Deaths	7-Day Moving Average
08JAN2023	4	5.86
15JAN2023	6	6.29
22JAN2023	5	5.57

Note1: Date of Death is calculated as follows based on completed information:
A) COVID19 Case is reported as deceased B) COVID19 Case has a reported date of death.

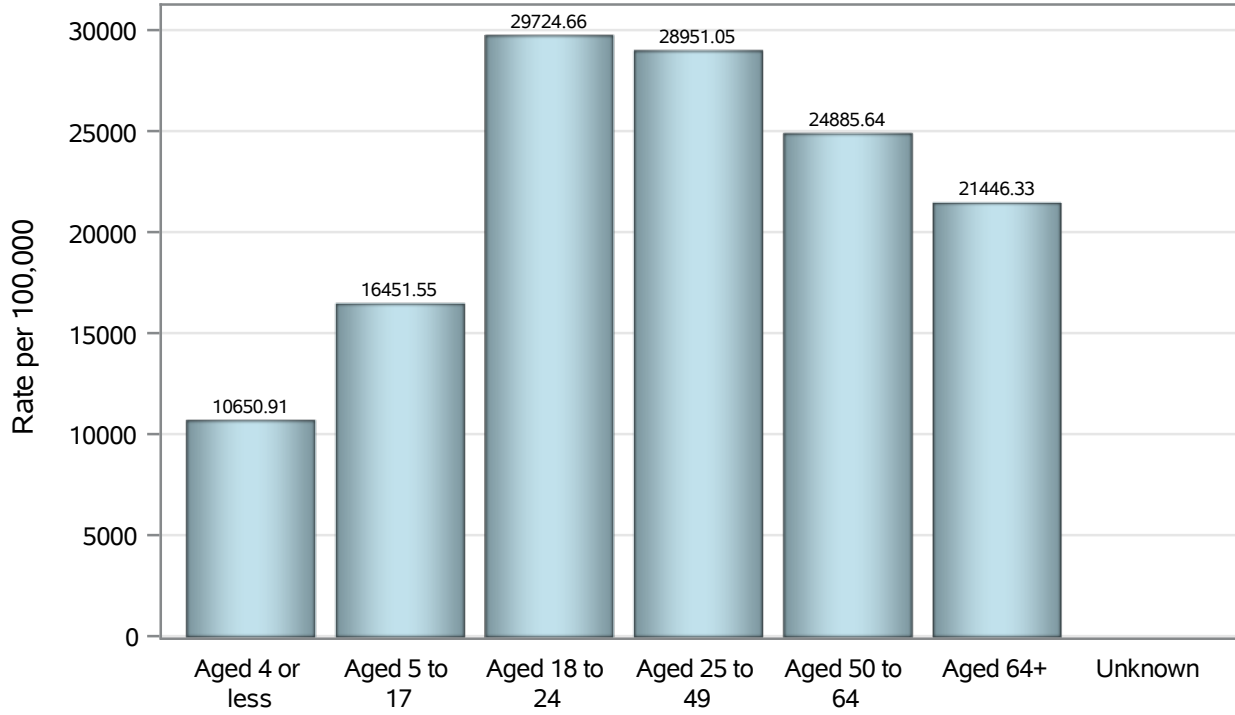
If date of death is missing, then the following is substituted temporarily, in order:
1) Disease onset date 2) Disease diagnosis date
3) Lab result collection date 4) Report date to SNHD.

Investigations are ongoing; data are subject to change.

Reporting through 06FEB2023

Henderson zip codes include 89002, 89011, 89012, 89014, 89015, 89044, 89052, 89074, 89119, 89120, 89122, 89123, 89124, 89183.

Case Age Rates in Henderson

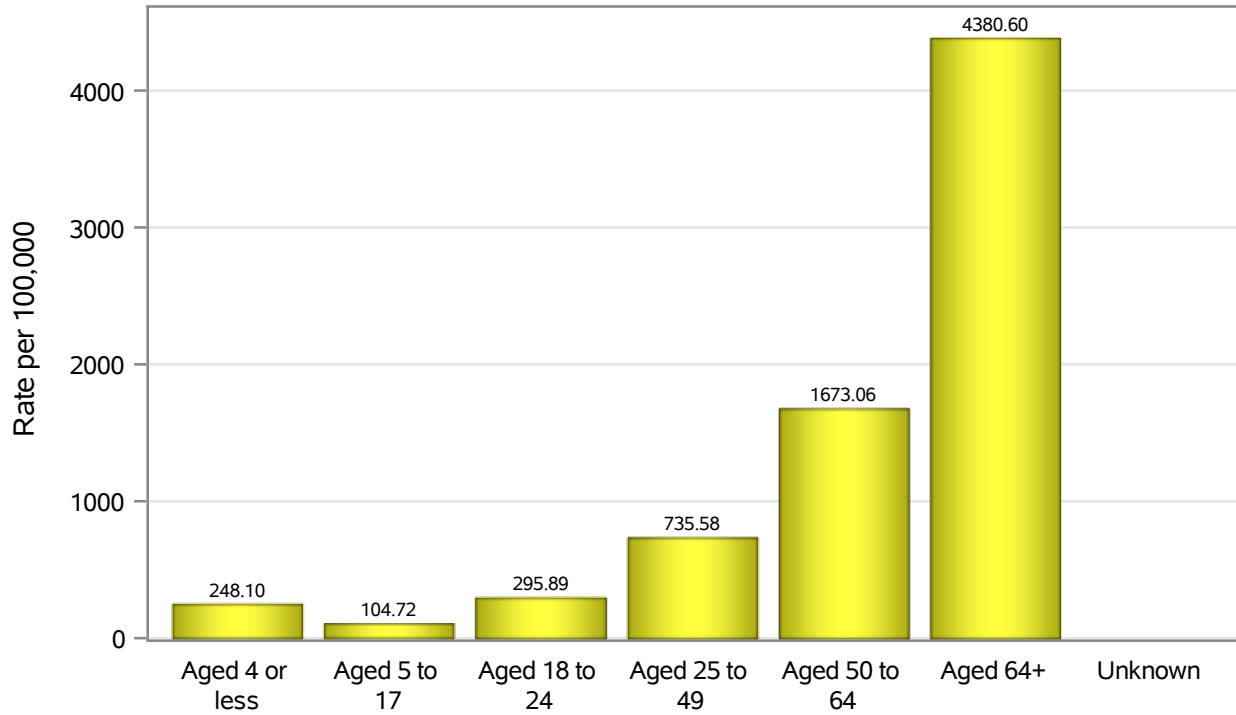


Investigations are ongoing; data are subject to change.

Reporting through 06FEB2023

Henderson zip codes include 89002, 89011, 89012, 89014, 89015, 89044, 89052, 89074, 89119, 89120, 89122, 89123, 89124, 89183.

Hospitalization Age Rates in Henderson

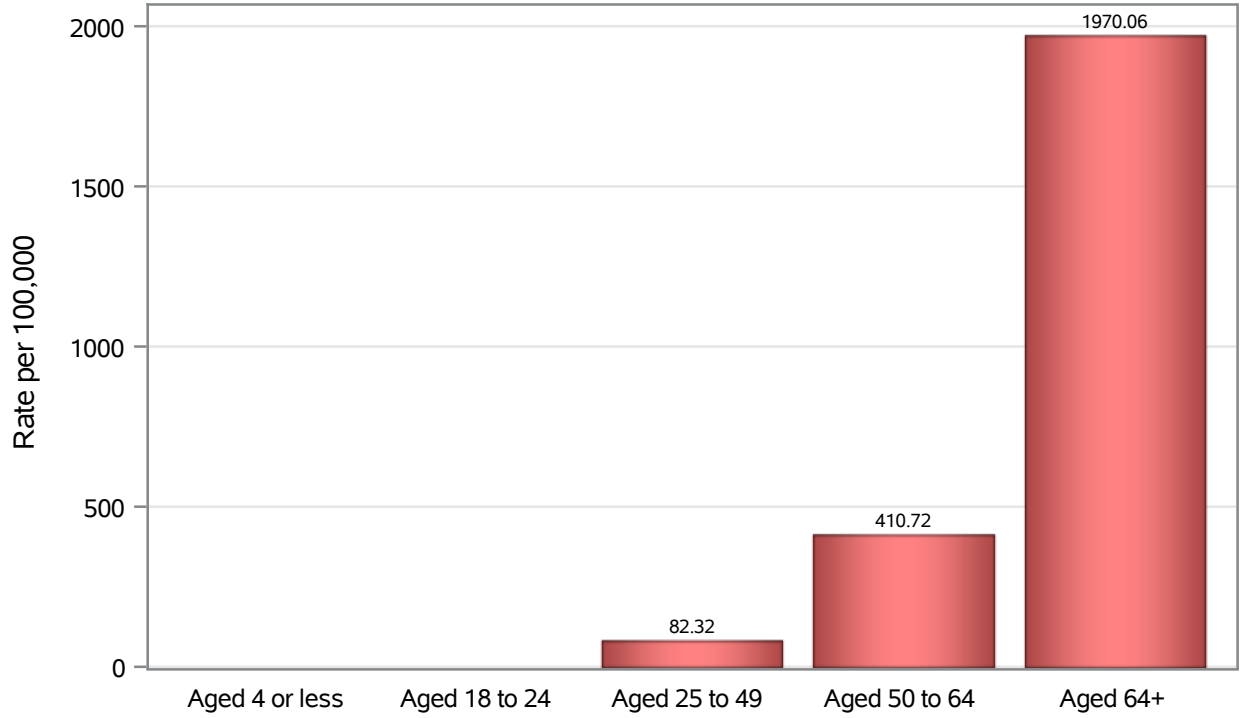


Investigations are ongoing; data are subject to change.

Reporting through 06FEB2023

Henderson zip codes include 89002, 89011, 89012, 89014, 89015, 89044, 89052, 89074, 89119, 89120, 89122, 89123, 89124, 89183.

Death Age Rates in Henderson



Investigations are ongoing; data are subject to change.

Reporting through 06FEB2023

Henderson zip codes include 89002, 89011, 89012, 89014, 89015, 89044, 89052, 89074, 89119, 89120, 89122, 89123, 89124, 89183.

Table 5: Age and COVID19 in Henderson

Case Status	Age Categories	N	%	Population	Rate per 100,000
Cases	Aged 4 or less	3091	2.4	29,021	10651
	Aged 5 to 17	13511	10.5	82,126	16452
	Aged 18 to 24	13160	10.3	44,273	29725
	Aged 25 to 49	54157	42.3	187064	28951
	Aged 50 to 64	25569	20.0	102746	24886
	Aged 64+	18550	14.5	86,495	21446
	Unknown	29	0.0	.	.
Hospitalizations	Aged 4 or less	72	1.0	29,021	248.10
	Aged 5 to 17	86	1.2	82,126	104.72
	Aged 18 to 24	131	1.8	44,273	295.89
	Aged 25 to 49	1376	19.2	187064	735.58
	Aged 50 to 64	1719	24.0	102746	1673.1
	Aged 64+	3789	52.8	86,495	4380.6
	Unknown	1	0.0	.	.
Deaths	Aged 4 or less	1	0.0	29,021	.
	Aged 18 to 24	4	0.2	44,273	.
	Aged 25 to 49	154	6.7	187064	82.32
	Aged 50 to 64	422	18.5	102746	410.72
	Aged 64+	1704	74.6	86,495	1970.1

Note1: Population data source for calculating rate estimates: U.S. Census Bureau, ACS 5-year estimate.

Note2: Rates for categories with fewer than 12 cases are suppressed due to high relative standard error.

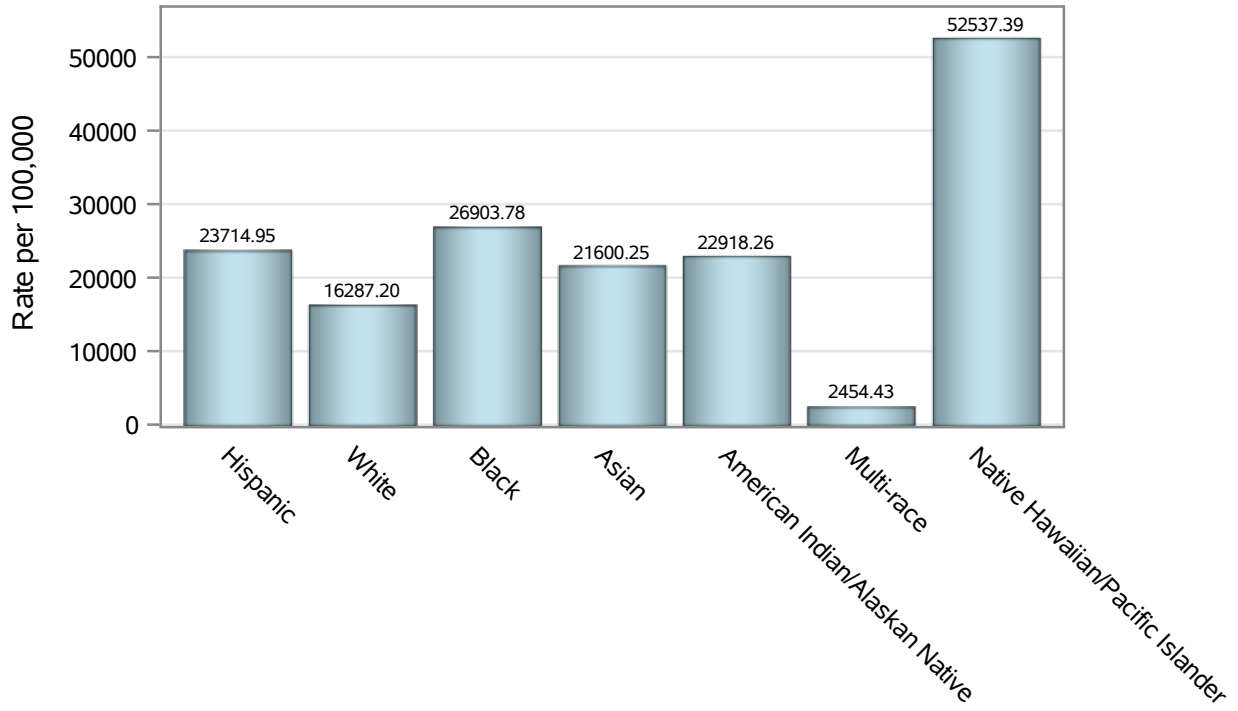
Note3: Hospitalizations are regardless of deceased status; Deaths are regardless of hospitalization status

Investigations are ongoing; data are subject to change.

Reporting through 06FEB2023

Henderson zip codes include 89002, 89011, 89012, 89014, 89015, 89044, 89052, 89074, 89119, 89120, 89122, 89123, 89124, 89183.

Case Race/Ethnicity Rates in Henderson

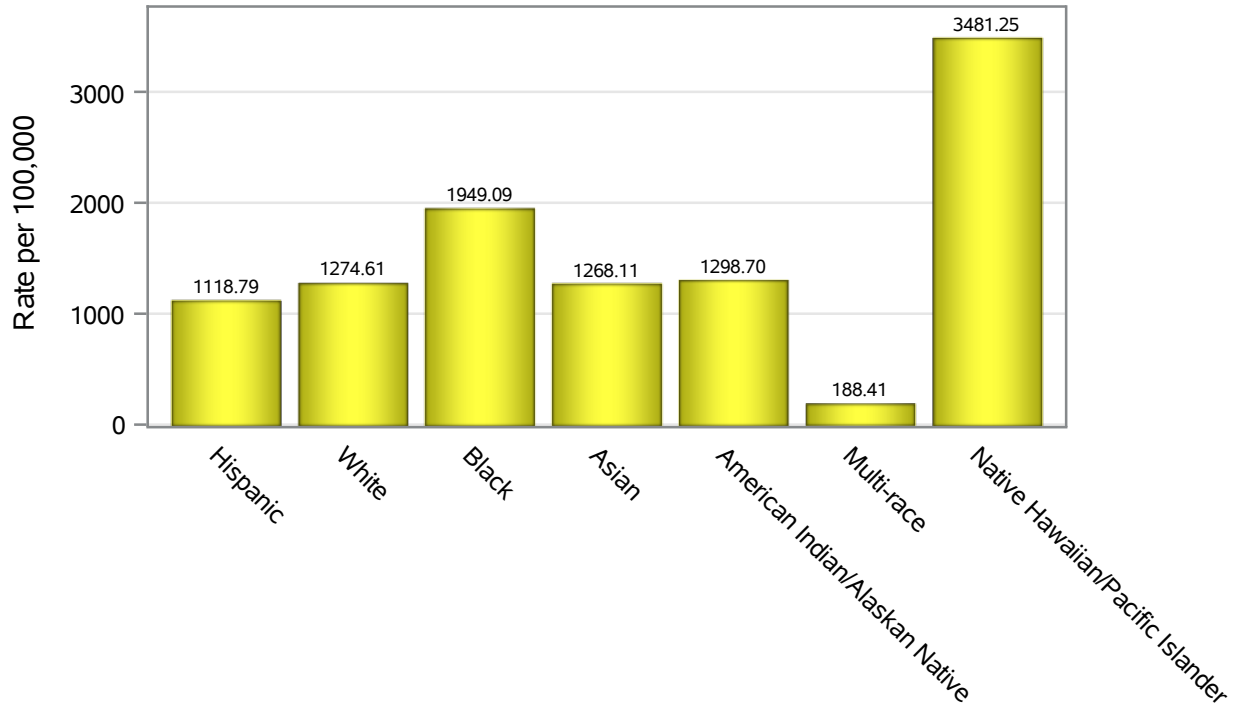


Investigations are ongoing; data are subject to change.

Reporting through 06FEB2023

Henderson zip codes include 89002, 89011, 89012, 89014, 89015, 89044, 89052, 89074, 89119, 89120, 89122, 89123, 89124, 89183.

Hospitalization Race/Ethnicity Rates in Henderson

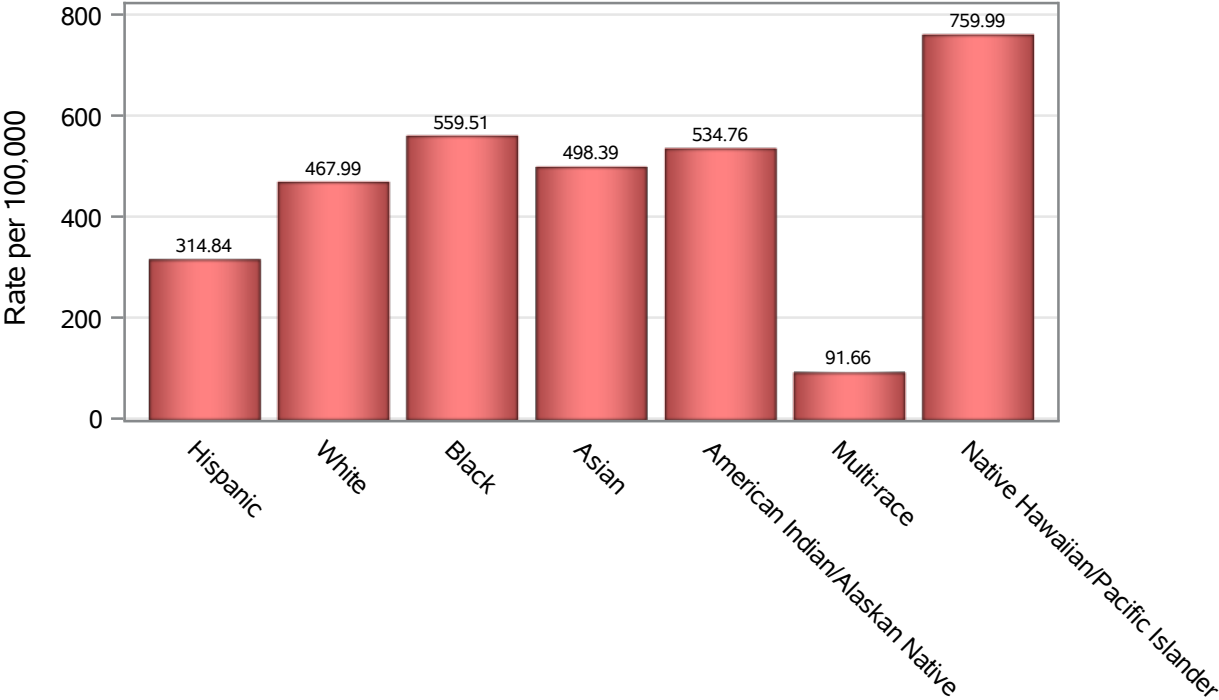


Investigations are ongoing; data are subject to change.

Reporting through 06FEB2023

Henderson zip codes include 89002, 89011, 89012, 89014, 89015, 89044, 89052, 89074, 89119, 89120, 89122, 89123, 89124, 89183.

Death Race/Ethnicity Rates in Henderson



Investigations are ongoing; data are subject to change.
Reporting through 06FEB2023

Henderson zip codes include 89002, 89011, 89012, 89014, 89015, 89044, 89052, 89074, 89119, 89120, 89122, 89123, 89124, 89183.

Table 6: Race/Ethnicity and COVID19 in Henderson

Case Status	Race Ethnicity Categories	N	%	Population	Rate per 100,000
Cases	Hispanic	28849	22.5	121649	23715
	White	47471	37.1	291462	16287
	Black	10242	8.0	38,069	26904
	Asian	11225	8.8	51,967	21600
	American Indian/Alaskan Native	600	0.5	2,618	22918
	Multi-race	482	0.4	19,638	2454.4
	Native Hawaiian/Pacific Islander	2143	1.7	4,079	52537
	Unknown	27055	21.1	.	.
Hospitalizations	Hispanic	1361	19.0	121649	1118.8
	White	3715	51.8	291462	1274.6
	Black	742	10.3	38,069	1949.1
	Asian	659	9.2	51,967	1268.1
	American Indian/Alaskan Native	34	0.5	2,618	1298.7
	Multi-race	37	0.5	19,638	188.41
	Native Hawaiian/Pacific Islander	142	2.0	4,079	3481.2
	Unknown	484	6.7	.	.
Deaths	Hispanic	383	16.8	121649	314.84
	White	1364	59.7	291462	467.99
	Black	213	9.3	38,069	559.51
	Asian	259	11.3	51,967	498.39
	American Indian/Alaskan Native	14	0.6	2,618	534.76
	Multi-race	18	0.8	19,638	91.66
	Native Hawaiian/Pacific Islander	31	1.4	4,079	759.99
	Unknown	3	0.1	.	.

Note1: Population data source for calculating rate estimates: U.S. Census Bureau, ACS 5-year estimate.

Note2: Rates for categories with fewer than 12 cases are suppressed due to high relative standard error.

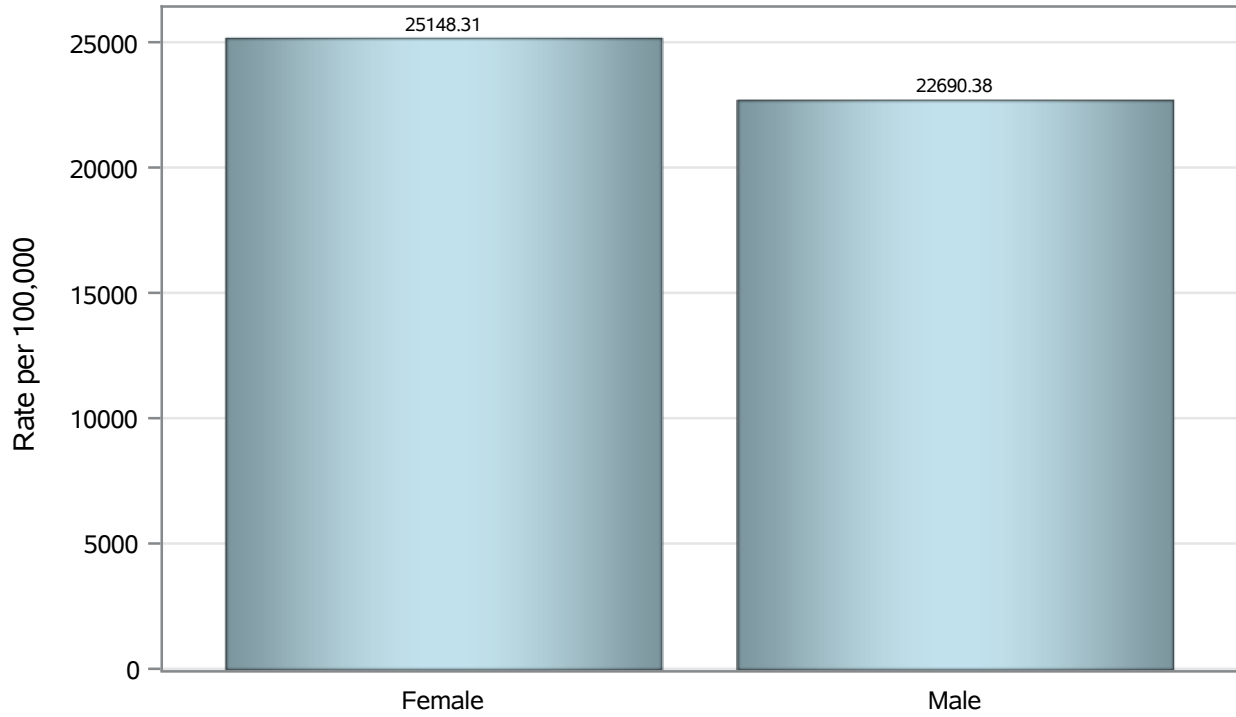
Note3: Hospitalizations are regardless of deceased status; Deaths are regardless of hospitalization status

Investigations are ongoing; data are subject to change.

Reporting through 06FEB2023

Henderson zip codes include 89002, 89011, 89012, 89014, 89015, 89044, 89052, 89074, 89119, 89120, 89122, 89123, 89124, 89183.

Case Birth Sex Rates in Henderson

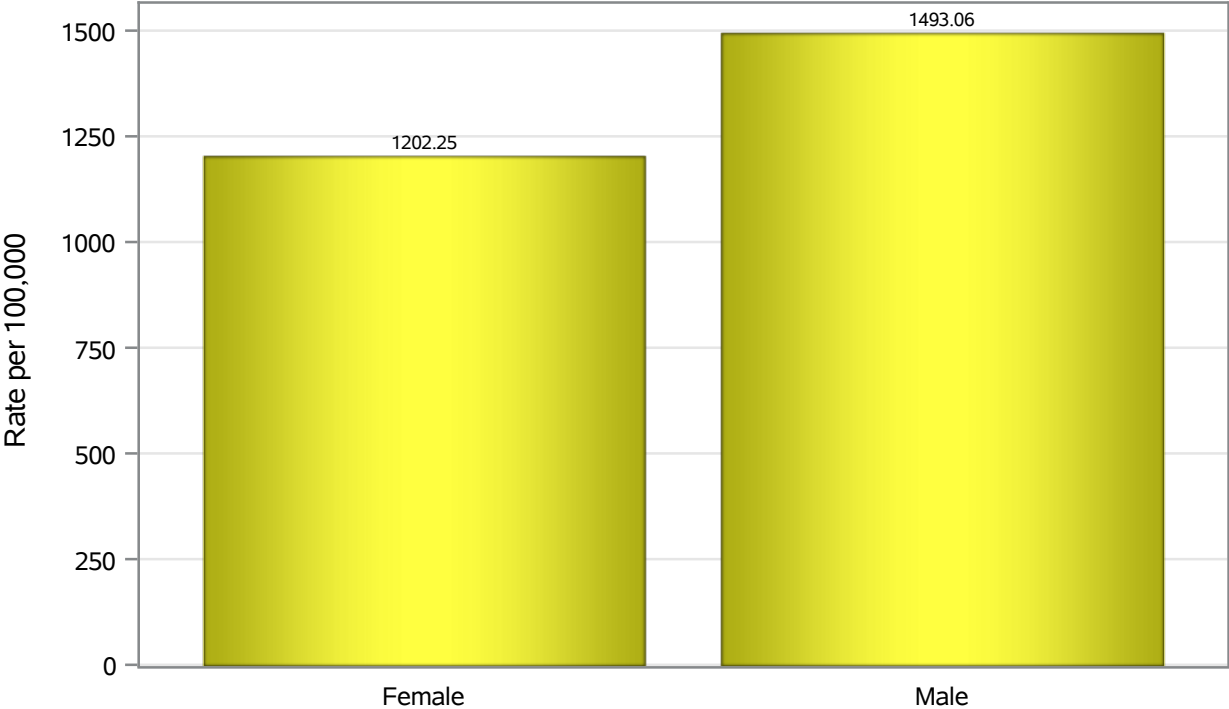


Investigations are ongoing; data are subject to change.

Reporting through 06FEB2023

Henderson zip codes include 89002, 89011, 89012, 89014, 89015, 89044, 89052, 89074, 89119, 89120, 89122, 89123, 89124, 89183.

Hospitalization Birth Sex Rates in Henderson

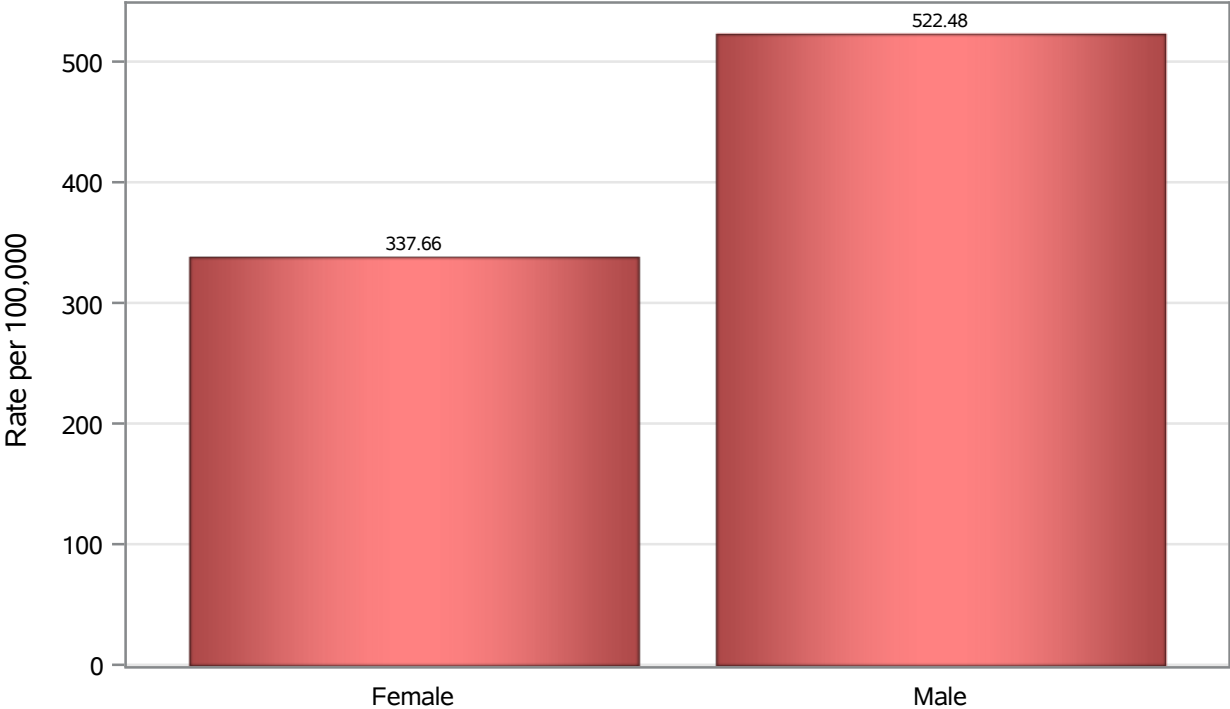


Investigations are ongoing; data are subject to change.

Reporting through 06FEB2023

Henderson zip codes include 89002, 89011, 89012, 89014, 89015, 89044, 89052, 89074, 89119, 89120, 89122, 89123, 89124, 89183.

Death Birth Sex Rates in Henderson



Investigations are ongoing; data are subject to change.
Reporting through 06FEB2023

Henderson zip codes include 89002, 89011, 89012, 89014, 89015, 89044, 89052, 89074, 89119, 89120, 89122, 89123, 89124, 89183.

Table 7: Birth Sex and COVID19 in Henderson

Case Status	Birth Sex Categories	N	%	Population	Rate per 100,000
Cases	Female	67104	52.4	266833	25148
	Male	60105	46.9	264892	22690
	Unknown	858	0.7	.	.
Hospitalizations	Female	3208	44.7	266833	1202.3
	Male	3955	55.1	264892	1493.1
	Unknown	11	0.2	.	.
Deaths	Female	901	39.4	266833	337.66
	Male	1384	60.6	264892	522.48

Note1: Population data source for calculating rate estimates: U.S. Census Bureau, ACS 5-year estimate.

Note2: Rates for categories with fewer than 12 cases are suppressed due to high relative standard error.

Note3: Hospitalizations are regardless of deceased status; Deaths are regardless of hospitalization status

Investigations are ongoing; data are subject to change.

Reporting through 06FEB2023

Henderson zip codes include 89002, 89011, 89012, 89014, 89015, 89044, 89052, 89074, 89119, 89120, 89122, 89123, 89124, 89183.