

# COVID-19 Trends

Clark County, Nevada

Document creation date: December 23, 2023

- **General notes:** This report uses surveillance data collected by the Southern Nevada Health District. Due to delays related to laboratory processing, reporting, and case investigations, data from the most recent days are less complete than data from older time points. For this reason, as of June 10, 2020 this report will not display data from the previous three days prior to the date that the report was created. As many case investigations are ongoing, all data presented in this report are considered preliminary and subject to change. Data regarding cases, hospitalizations, deaths, and labs were last updated December 23, 2023 at 12:00 AM, and data is reported up through December 19, 2023.
- **Cases:** Symptom onset date was used for aggregating cases. If symptom onset date was missing, the following dates were substituted in this order: diagnosis date, lab collection date, report date (date case was reported to SNHD), event creation date (date case was entered into EpiTrax, SNHD's surveillance system).
- **Hospitalizations:** Admission date reported the the Nevada Hospital Association was used for aggregating hospitalizations. One person could have more than one admissions.
- **Deaths:** Date of death was used for aggregating deaths. If date of death was missing, report date was used.
- For the "7-Day Average of Daily New Cases per 100K, by Age Group (Years)" graph and table, the population data source for calculating rate estimates was from Nevada State Demographer "2019 ASRHO Estimates and Projections Summary 2000 to 2038", 2020 projection, vintage 2019. Rates for individual age categories may be based on small numbers, which may give unstable estimates.
- All graphs in this report show data from approximately 60 days prior to the date of the report.
- All tables show data from the last 14 days before the current date, with the exception of the "Percent Change in Weekly Totals from Previous Week", which displays data from the previous eight completed weeks.
- For the "Percent of People Receiving COVID-19 PCR Tests Who Have Positive Results" graph, one person who has multiple specimens collected in one day is only reported once. If any test of that person is positive, that person counts as a positive result. If all tests of that individual are negative, that person counts as a negative result. Laboratory tests were included if they were a test assessing for the presence of SARS-CoV-2 viral RNA, for example PCR tests. Antibody and antigen tests were excluded.

# COVID-19 Cases

Clark County, NV

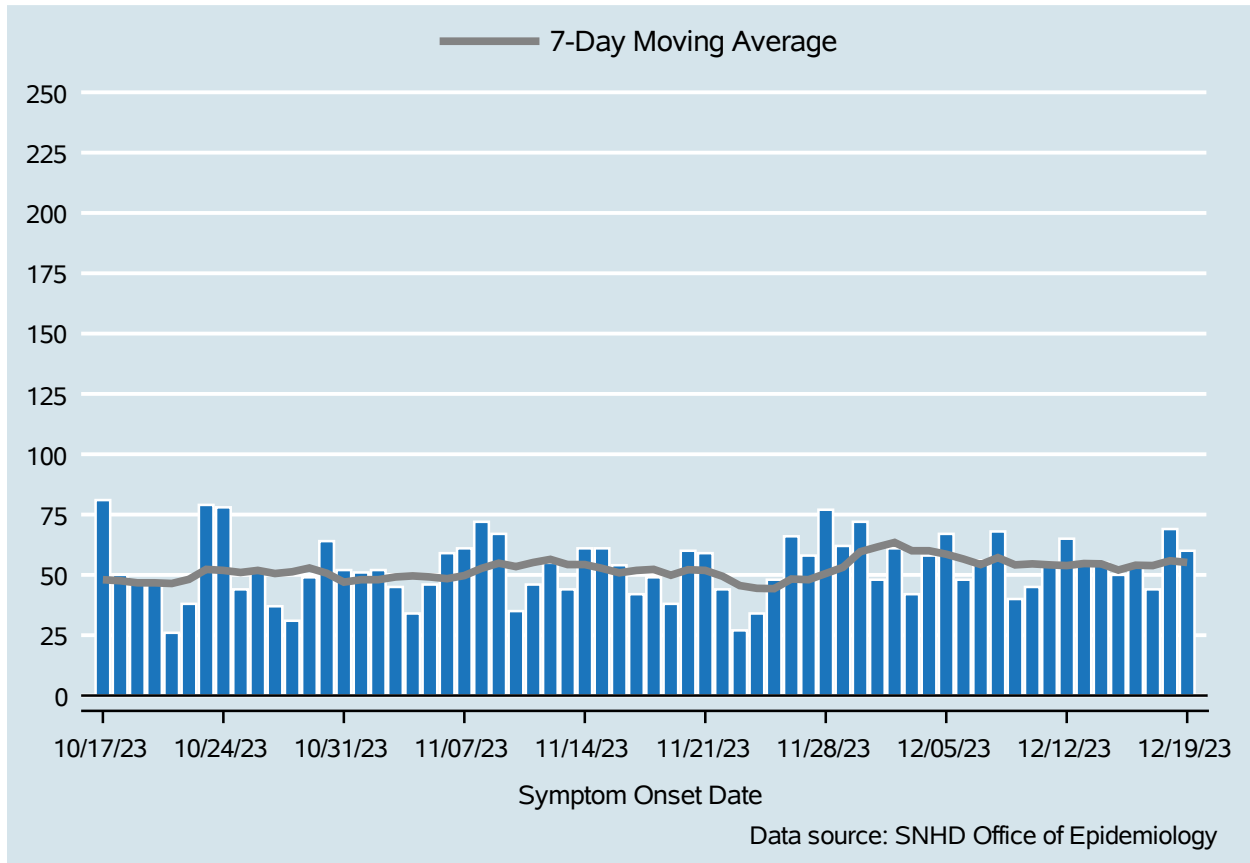


Table 1: COVID-19 Cases per Day, Clark County, NV

Date	Cases Per Day	7-Day Moving Average
Dec 06	48	56.6
Dec 07	56	54.3
Dec 08	68	57.1
Dec 09	40	54.1
Dec 10	45	54.6
Dec 11	55	54.1
Dec 12	65	53.9
Dec 13	54	54.7
Dec 14	55	54.6
Dec 15	50	52.0
Dec 16	54	54.0
Dec 17	44	53.9
Dec 18	69	55.9
Dec 19	60	55.1

# COVID-19 Hospitalizations

Clark County, NV

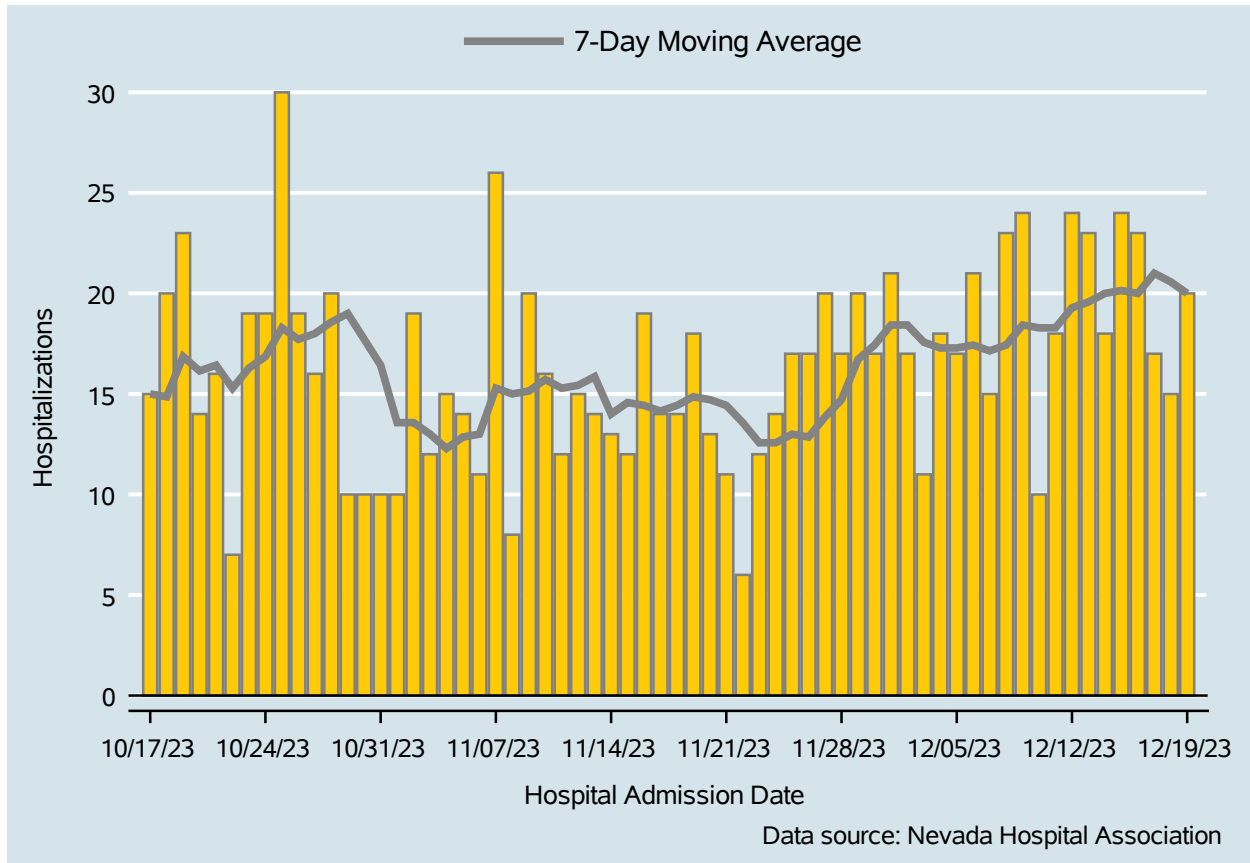


Table 2: COVID-19 Hospitalizations per Day, Clark County, NV

Date	Hospitalizations Per Day	7-Day Moving Average
Dec 06	21	17.4
Dec 07	15	17.1
Dec 08	23	17.4
Dec 09	24	18.4
Dec 10	10	18.3
Dec 11	18	18.3
Dec 12	24	19.3
Dec 13	23	19.6
Dec 14	18	20.0
Dec 15	24	20.1
Dec 16	23	20.0
Dec 17	17	21.0
Dec 18	15	20.6
Dec 19	20	20.0

## Bed Occupancy of COVID-19 Hospitalizations

Clark County, NV

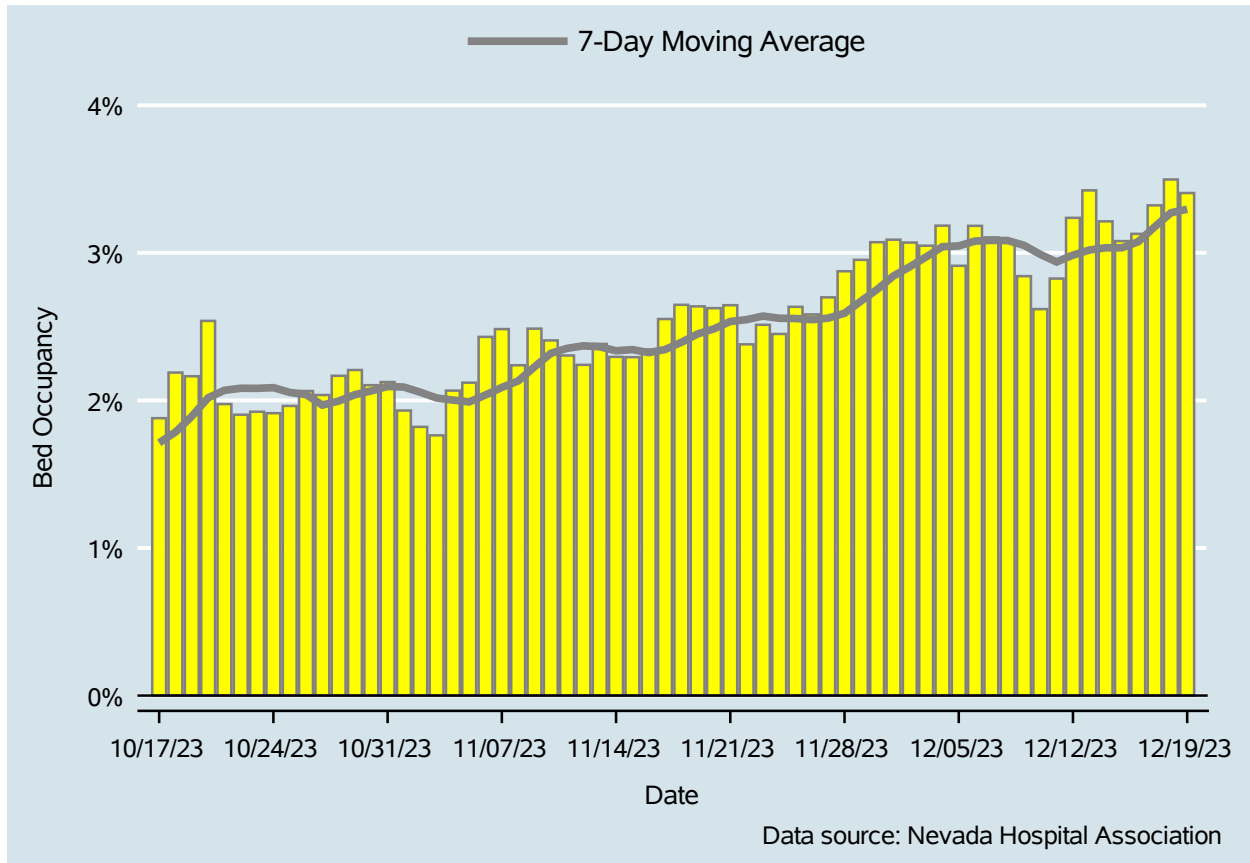


Table 3: Percent of Bed Occupancy per Day, Clark County, NV

Date	Bed Occupancy Per Day	7-Day Moving Average
Dec 06	3.18%	3.08%
Dec 07	3.10%	3.08%
Dec 08	3.08%	3.08%
Dec 09	2.84%	3.05%
Dec 10	2.62%	2.99%
Dec 11	2.83%	2.94%
Dec 12	3.24%	2.98%
Dec 13	3.42%	3.02%
Dec 14	3.21%	3.03%
Dec 15	3.08%	3.03%
Dec 16	3.13%	3.08%
Dec 17	3.32%	3.18%
Dec 18	3.50%	3.27%
Dec 19	3.41%	3.30%

# COVID-19 Deaths

Clark County, NV

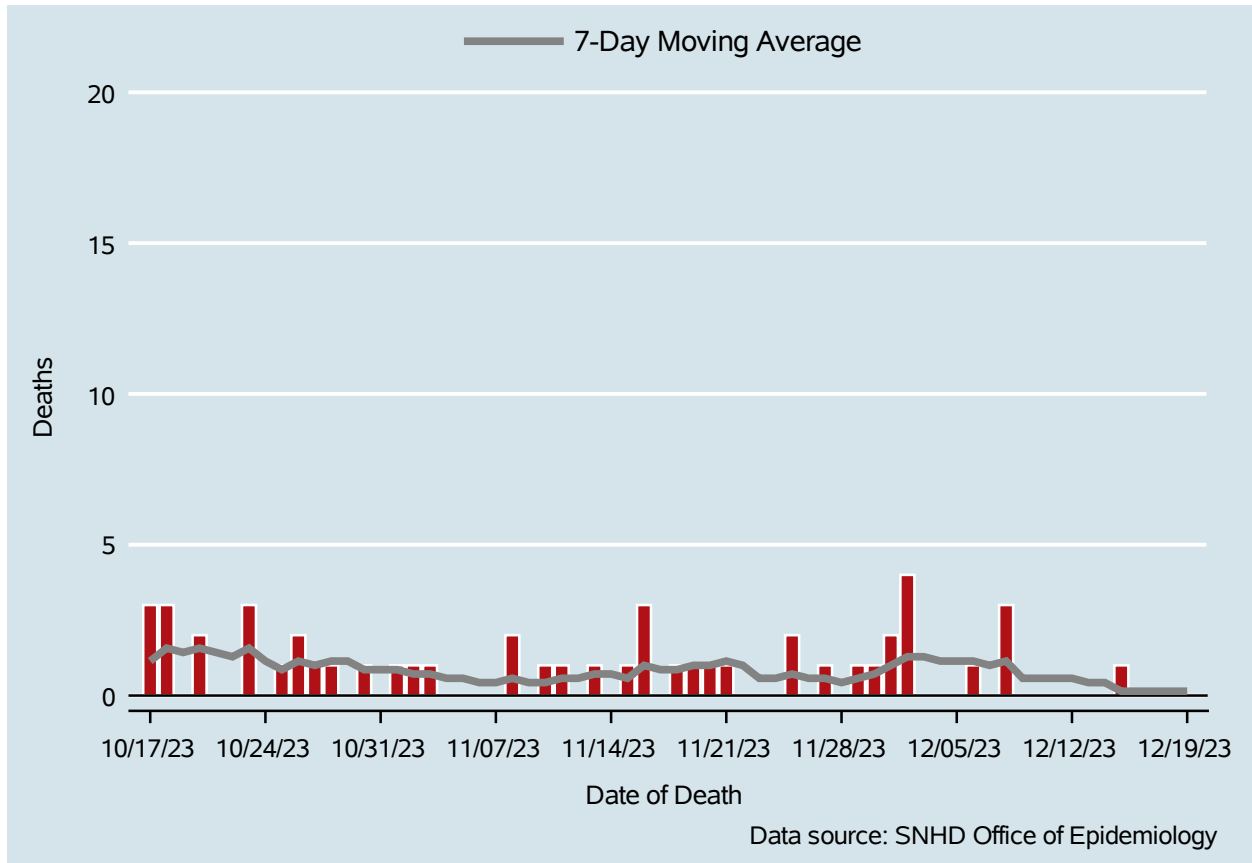


Table 4: COVID-19 Deaths per Day, Clark County, NV

Date	Deaths Per Day	7-Day Moving Average
Dec 06	1	1.1
Dec 07	0	1.0
Dec 08	3	1.1
Dec 09	0	0.6
Dec 10	0	0.6
Dec 11	0	0.6
Dec 12	0	0.6
Dec 13	0	0.4
Dec 14	0	0.4
Dec 15	1	0.1
Dec 16	0	0.1
Dec 17	0	0.1
Dec 18	0	0.1
Dec 19	0	0.1

## 7-Day Average of Daily New Cases per 100K, by Age Group (Years)

Clark County, NV

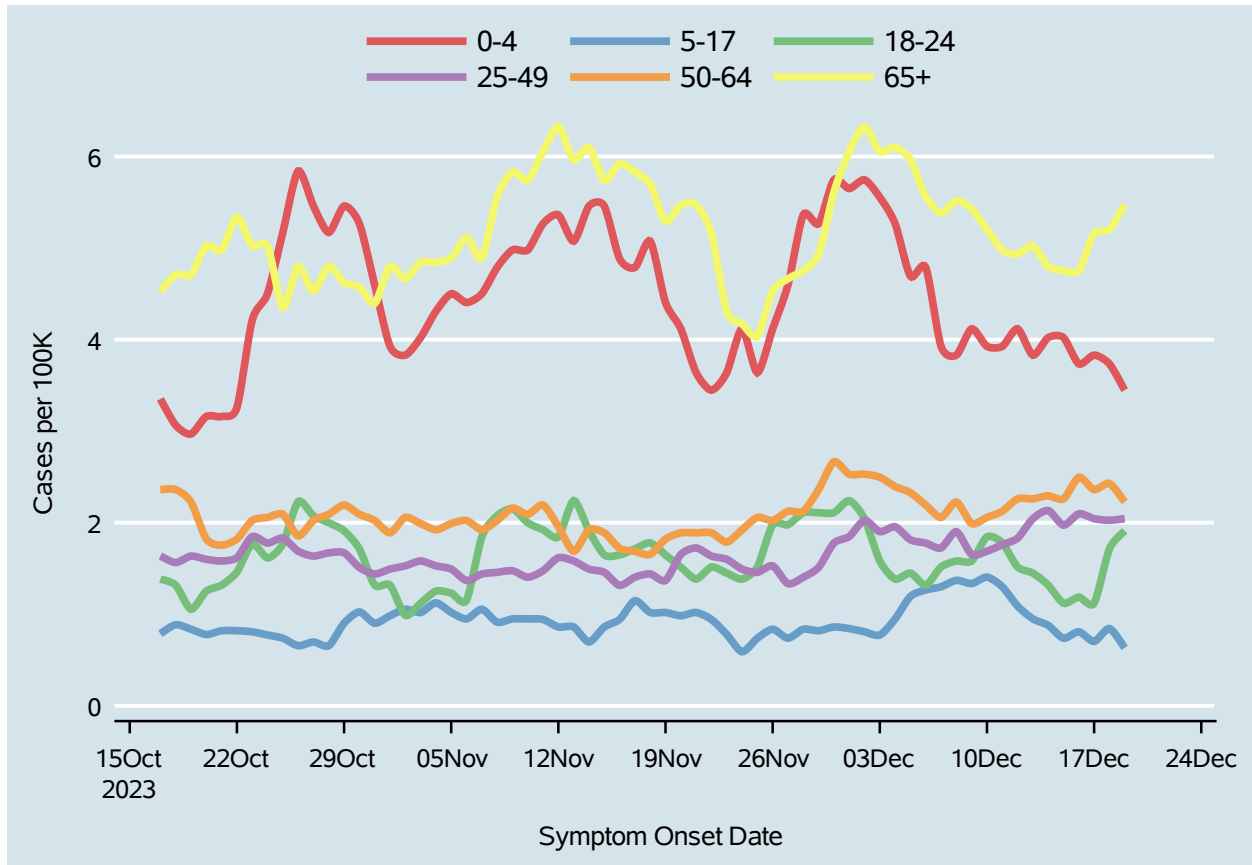


Table 5: 7-Day Average of Daily New Cases per 100K, by Age Group (Years)

Date	0-4	5-17	18-24	25-49	50-64	65+
Dec 06	4.8	1.3	1.3	1.8	2.2	5.6
Dec 07	3.9	1.3	1.5	1.7	2.1	5.4
Dec 08	3.8	1.4	1.6	1.9	2.2	5.5
Dec 09	4.1	1.3	1.6	1.7	2.0	5.4
Dec 10	3.9	1.4	1.8	1.7	2.1	5.2
Dec 11	3.9	1.3	1.8	1.8	2.1	5.0
Dec 12	4.1	1.1	1.5	1.8	2.3	4.9
Dec 13	3.8	0.9	1.4	2.0	2.3	5.0
Dec 14	4.0	0.9	1.3	2.1	2.3	4.8
Dec 15	4.0	0.7	1.1	2.0	2.3	4.8
Dec 16	3.7	0.8	1.2	2.1	2.5	4.8
Dec 17	3.8	0.7	1.1	2.0	2.4	5.2
Dec 18	3.7	0.8	1.7	2.0	2.4	5.2
Dec 19	3.4	0.6	1.9	2.0	2.2	5.5

*Report prepared by Office of Epidemiology*