

COVID-19 Trends

Clark County, Nevada

Document creation date: August 31, 2023

- **General notes:** This report uses surveillance data collected by the Southern Nevada Health District. Due to delays related to laboratory processing, reporting, and case investigations, data from the most recent days are less complete than data from older time points. For this reason, as of June 10, 2020 this report will not display data from the previous three days prior to the date that the report was created. As many case investigations are ongoing, all data presented in this report are considered preliminary and subject to change. Data regarding cases, hospitalizations, deaths, and labs were last updated August 31, 2023 at 12:00 AM, and data is reported up through August 27, 2023.
- **Cases:** Symptom onset date was used for aggregating cases. If symptom onset date was missing, the following dates were substituted in this order: diagnosis date, lab collection date, report date (date case was reported to SNHD), event creation date (date case was entered into EpiTrax, SNHD's surveillance system).
- **Hospitalizations:** Admission date reported the the Nevada Hospital Association was used for aggregating hospitalizations. One person could have more than one admissions.
- **Deaths:** Date of death was used for aggregating deaths. If date of death was missing, report date was used.
- For the "7-Day Average of Daily New Cases per 100K, by Age Group (Years)" graph and table, the population data source for calculating rate estimates was from Nevada State Demographer "2019 ASRHO Estimates and Projections Summary 2000 to 2038", 2020 projection, vintage 2019. Rates for individual age categories may be based on small numbers, which may give unstable estimates.
- All graphs in this report show data from approximately 60 days prior to the date of the report.
- All tables show data from the last 14 days before the current date, with the exception of the "Percent Change in Weekly Totals from Previous Week", which displays data from the previous eight completed weeks.
- For the "Percent of People Receiving COVID-19 PCR Tests Who Have Positive Results" graph, one person who has multiple specimens collected in one day is only reported once. If any test of that person is positive, that person counts as a positive result. If all tests of that individual are negative, that person counts as a negative result. Laboratory tests were included if they were a test assessing for the presence of SARS-CoV-2 viral RNA, for example PCR tests. Antibody and antigen tests were excluded.

COVID-19 Cases

Clark County, NV

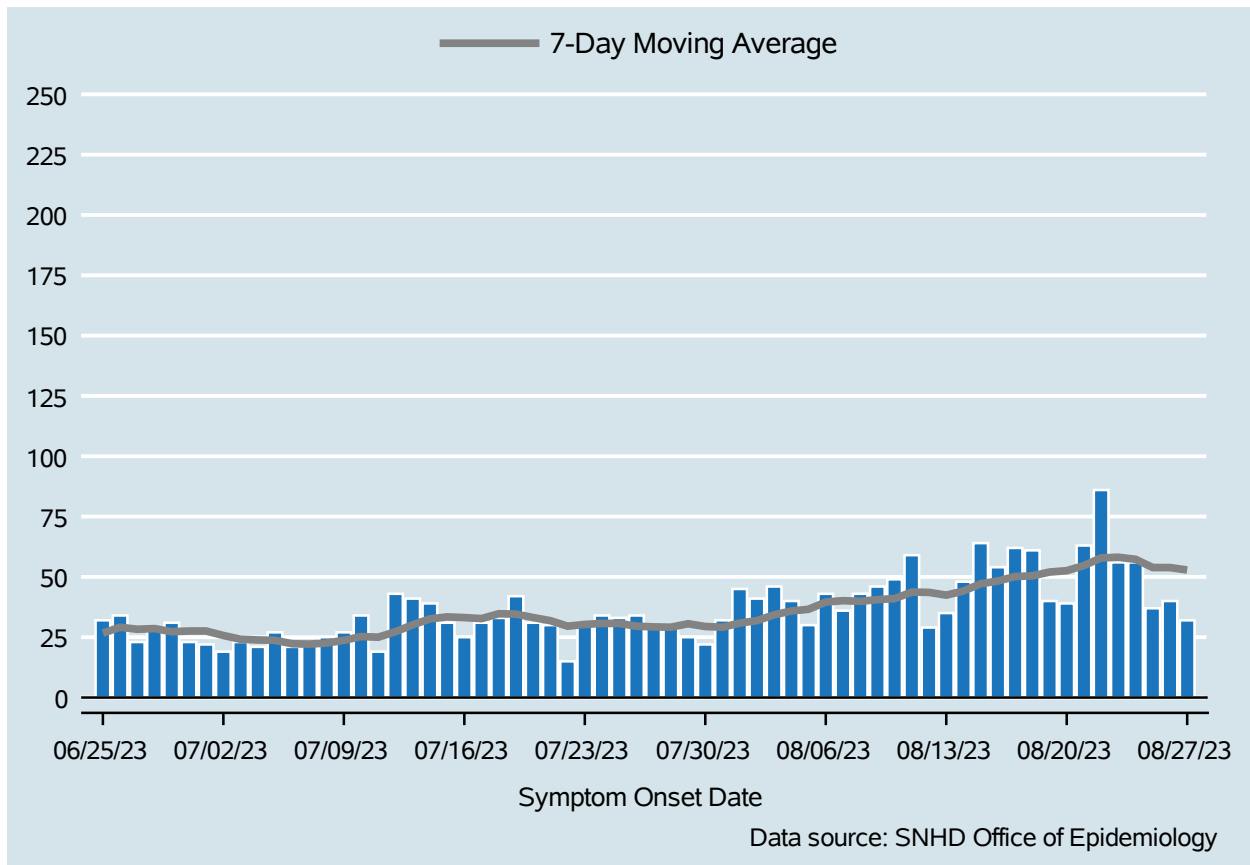


Table 1: COVID-19 Cases per Day, Clark County, NV

Date	Cases Per Day	7-Day Moving Average
Aug 14	48	44.1
Aug 15	64	47.1
Aug 16	54	48.3
Aug 17	62	50.1
Aug 18	61	50.4
Aug 19	40	52.0
Aug 20	39	52.6
Aug 21	63	54.7
Aug 22	86	57.9
Aug 23	56	58.1
Aug 24	56	57.3
Aug 25	37	53.9
Aug 26	40	53.9
Aug 27	32	52.9

COVID-19 Hospitalizations

Clark County, NV

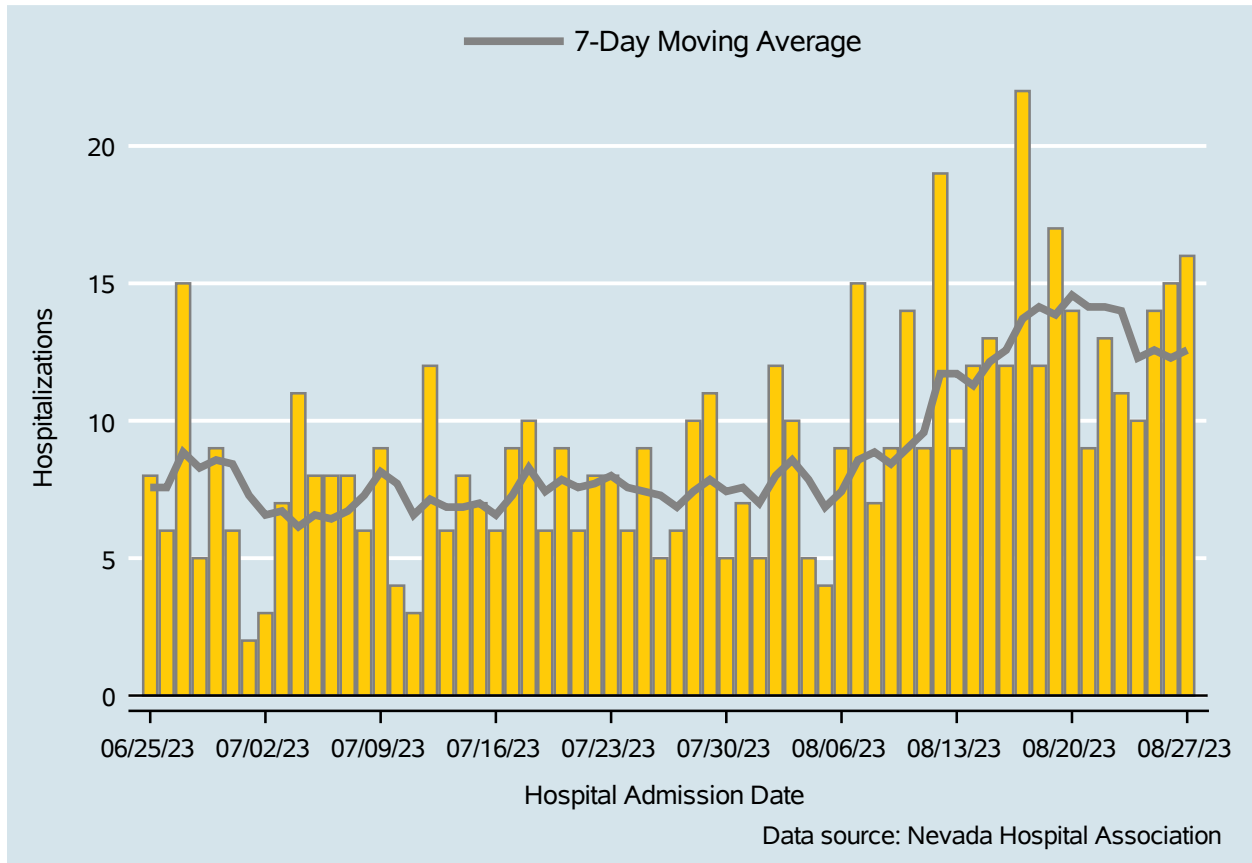


Table 2: COVID-19 Hospitalizations per Day, Clark County, NV

Date	Hospitalizations Per Day	7-Day Moving Average
Aug 14	12	11.3
Aug 15	13	12.1
Aug 16	12	12.6
Aug 17	22	13.7
Aug 18	12	14.1
Aug 19	17	13.9
Aug 20	14	14.6
Aug 21	9	14.1
Aug 22	13	14.1
Aug 23	11	14.0
Aug 24	10	12.3
Aug 25	14	12.6
Aug 26	15	12.3
Aug 27	16	12.6

Bed Occupancy of COVID-19 Hospitalizations

Clark County, NV

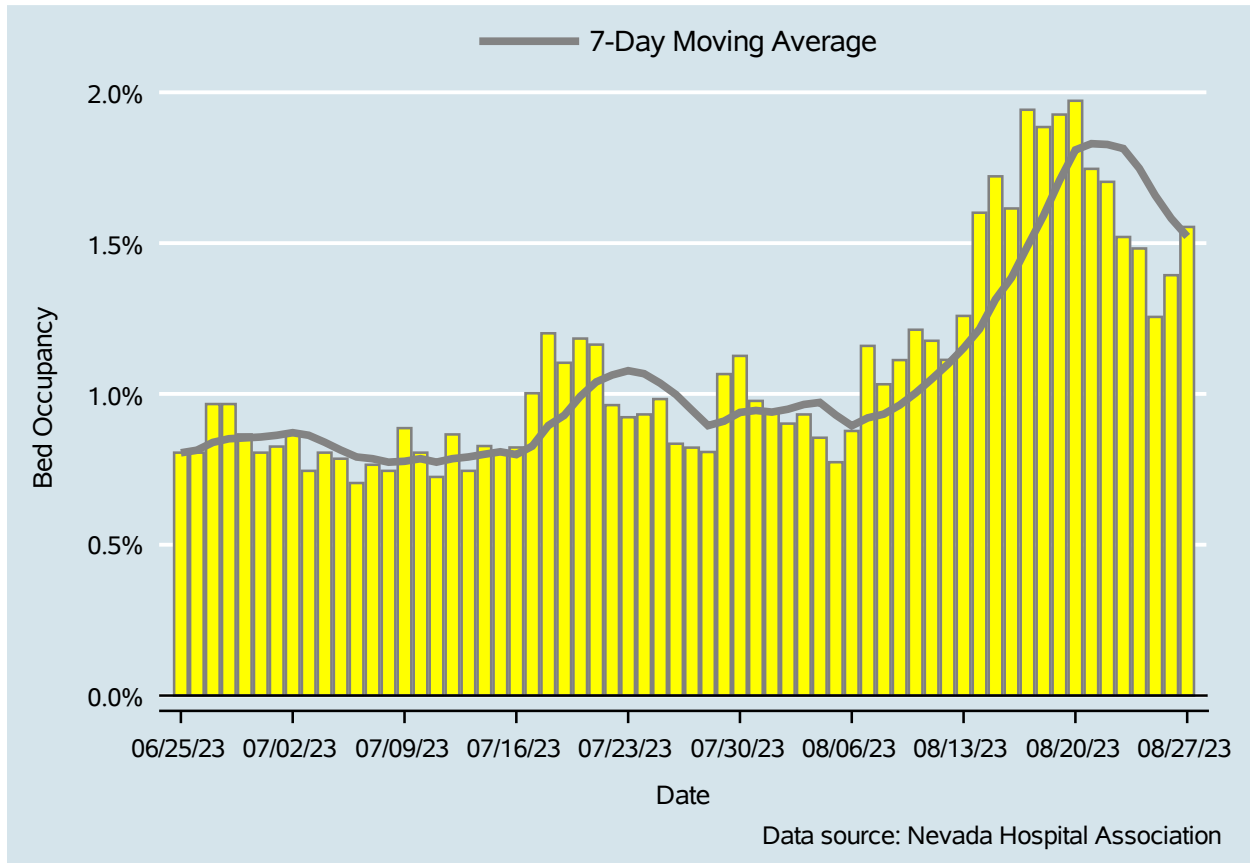


Table 3: Percent of Bed Occupancy per Day, Clark County, NV

Date	Bed Occupancy Per Day	7-Day Moving Average
Aug 14	1.60%	1.22%
Aug 15	1.72%	1.31%
Aug 16	1.61%	1.39%
Aug 17	1.94%	1.49%
Aug 18	1.88%	1.59%
Aug 19	1.93%	1.71%
Aug 20	1.97%	1.81%
Aug 21	1.75%	1.83%
Aug 22	1.70%	1.83%
Aug 23	1.52%	1.81%
Aug 24	1.48%	1.75%
Aug 25	1.26%	1.66%
Aug 26	1.39%	1.58%
Aug 27	1.55%	1.52%

COVID-19 Deaths

Clark County, NV

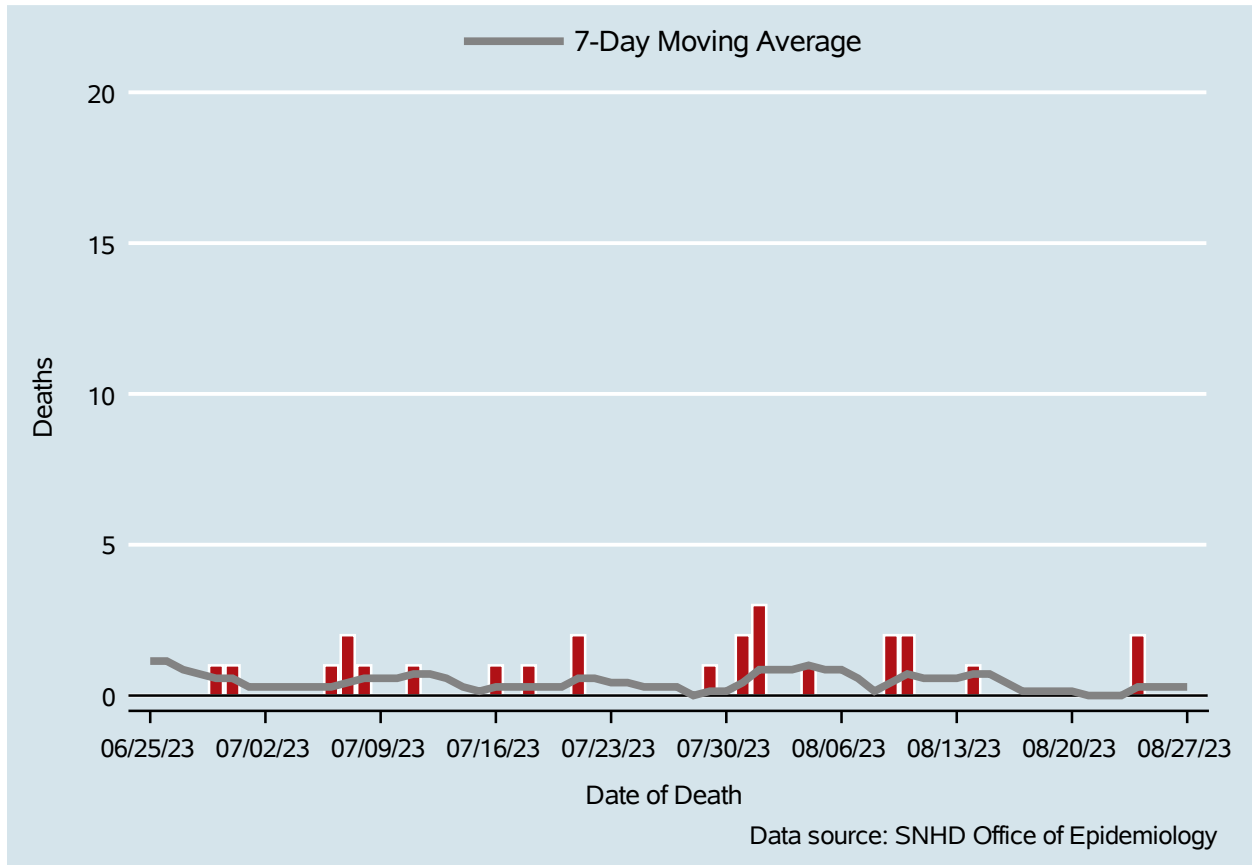


Table 4: COVID-19 Deaths per Day, Clark County, NV

Date	Deaths Per Day	7-Day Moving Average
Aug 14	1	0.7
Aug 15	0	0.7
Aug 16	0	0.4
Aug 17	0	0.1
Aug 18	0	0.1
Aug 19	0	0.1
Aug 20	0	0.1
Aug 21	0	0.0
Aug 22	0	0.0
Aug 23	0	0.0
Aug 24	2	0.3
Aug 25	0	0.3
Aug 26	0	0.3
Aug 27	0	0.3

7-Day Average of Daily New Cases per 100K, by Age Group (Years)

Clark County, NV

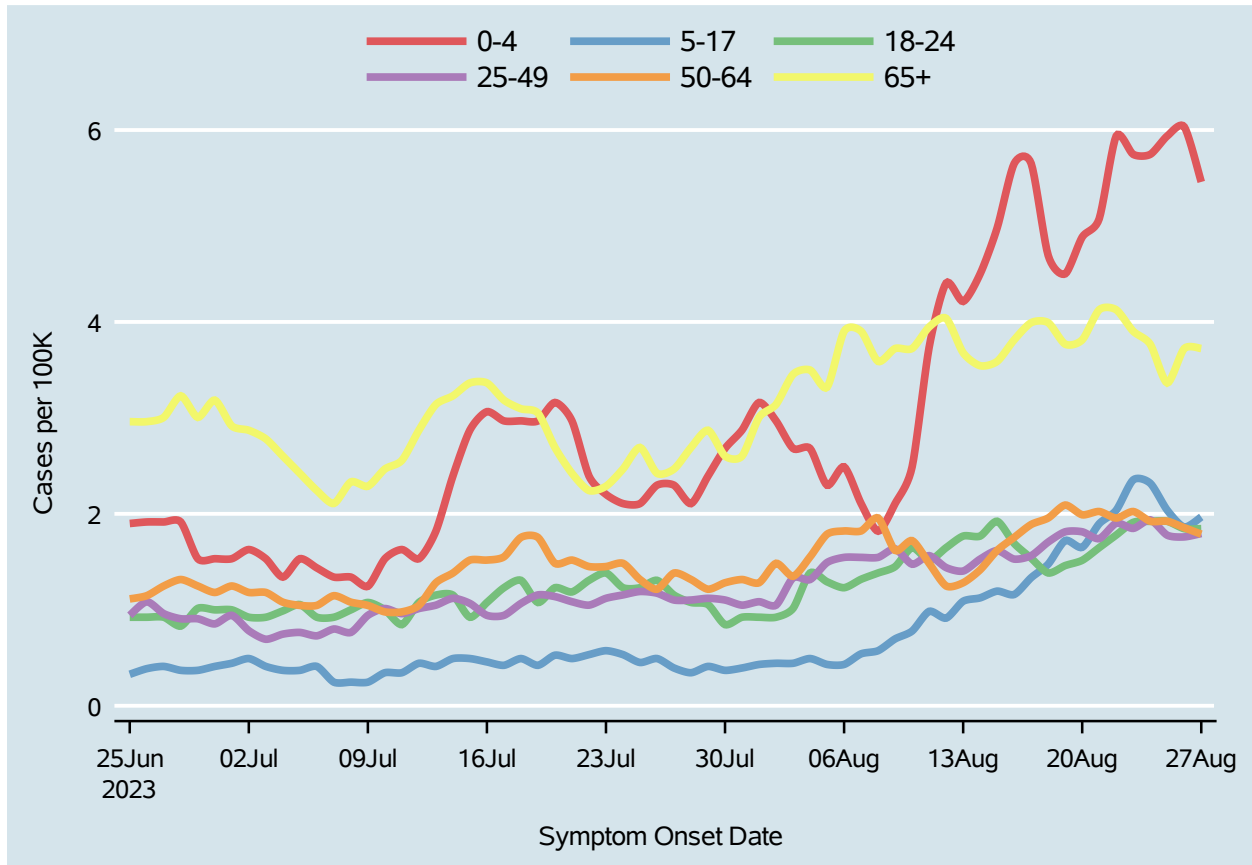


Table 5: 7-Day Average of Daily New Cases per 100K, by Age Group (Years)

Date	0-4	5-17	18-24	25-49	50-64	65+
Aug 14	4.5	1.1	1.8	1.5	1.4	3.5
Aug 15	5.0	1.2	1.9	1.6	1.6	3.6
Aug 16	5.7	1.2	1.7	1.5	1.8	3.8
Aug 17	5.7	1.3	1.5	1.6	1.9	4.0
Aug 18	4.7	1.5	1.4	1.7	2.0	4.0
Aug 19	4.5	1.7	1.5	1.8	2.1	3.8
Aug 20	4.9	1.7	1.5	1.8	2.0	3.8
Aug 21	5.1	1.9	1.6	1.7	2.0	4.1
Aug 22	5.9	2.0	1.8	1.9	2.0	4.1
Aug 23	5.7	2.4	1.9	1.8	2.0	3.9
Aug 24	5.7	2.3	1.9	1.9	1.9	3.8
Aug 25	5.9	2.0	1.9	1.8	1.9	3.4
Aug 26	6.0	1.9	1.8	1.8	1.9	3.7
Aug 27	5.5	2.0	1.8	1.8	1.8	3.7

Report prepared by: Ying Zhang, PhD, MPH (Office of Epidemiology) and Lei Zhang, MS (Office of Informatics)