

COVID-19 Trends, Clark County, NV

(FOR OFFICIAL USE ONLY)

Document creation date: August 15, 2023

Technical Notes:

- **General notes:** This report uses surveillance data collected by the Southern Nevada Health District. Due to delays related to laboratory processing, reporting, and case investigations, data from the most recent days are less complete than data from older time points. For this reason, as of June 10, 2020 this report will not display data from the previous three days prior to the date that the report was created. As many case investigations are ongoing, all data presented in this report are considered preliminary and subject to change. Data regarding cases, hospitalizations, deaths, and labs were last updated August 15, 2023 at 12:00 AM, and data is reported up through August 11, 2023.
- **Cases:** Symptom onset date was used for aggregating cases. If symptom onset date was missing, the following dates were substituted in this order: diagnosis date, lab collection date, report date (date case was reported to SNHD), event creation date (date case was entered into EpiTrax, SNHD's surveillance system).
- **Hospitalizations:** Admission date reported the the Nevada Hospital Association was used for aggregating hospitalizations. One person could have more than one admissions.
- **Hospital admission levels** were based on 7-day total of new COVID-19 hospital admissions per 100,000 population: high means greater than or equal to 20.0 per 100,000, medium means less than 20.0 but greater than or equal to 10.0 per 100,000, low means less than 10.0 per 100,000.
- **Deaths:** Date of death was used for aggregating deaths. If date of death was missing, report date was used.
- The population data source for calculating rate estimates was from Nevada State Demographer "2019 ASRHO Estimates and Projections Summary 2000 to 2038", 2020 projection, vintage 2019. Rates for individual age categories may be based on small numbers, which may give unstable estimates.

- The "Percent Change in Weekly Totals from Previous Week" graph and table display the percentage change in weekly totals of cases, hospitalizations, and deaths from the previous weekly totals. For the purpose of calculating weekly totals, weeks start on Monday and end on Sunday. A particular week will only be displayed in the report if data of every day in that week has been released. For example, if the report was created on June 10, 2020, the last day of reported data will be from Saturday June 6. Since data is only available for six of the seven days in that particular week, that week will not be included in the report.
- All graphs in this report show data from approximately 60 days prior to the date of the report.
- All tables show data from the last 14 days before the current date, with the exception of the "Percent Change in Weekly Totals from Previous Week", which displays data from the previous eight completed weeks.
- For the "Percent of People Receiving COVID-19 PCR Tests Who Have Positive Results" graph, one person who has multiple specimens collected in one day is only reported once. If any test of that person is positive, that person counts as a positive result. If all tests of that individual are negative, that person counts as a negative result. Laboratory tests were included if they were a test assessing for the presence of SARS-CoV-2 viral RNA, for example PCR tests. Antibody and antigen tests were excluded.
- For the "Percent of Total COVID-19 PCR Tests With Positive Results" graph, the numerator is the total number of positive tests, and the denominator is the total number of tests performed. Multiple tests are possible for each individual per day if more than one sample was collected. Laboratory tests were included if they were a test assessing for the presence of SARS-CoV-2 viral RNA, for example PCR tests. Antibody and antigen tests were excluded. Laboratory test results were included if they were reported electronically by laboratories or providers. Tests were excluded if entered by SNHD surveillance staff manually, as surveillance staff do not typically enter negative results, and this would bias the results of the graph in the positive direction.
- Syndromic Surveillance: Data source is the Electronic Surveillance System for the Early Notification of Community-based Epidemics (ESSENCE) Nevada. These data capture the Percent of emergency department visits that could presumptively be related to COVID-19 at non-federal acute care hospitals in Clark County. This includes visits where 1) the chief complaint of the patient was a symptom of coronavirus-like illness (i.e., fever and chills, cough, shortness of breath); or 2) a patient was diagnosed with symptoms of coronavirus-like illness; or 3) a patient was diagnosed with COVID-19. Visits among patients who were diagnosed with Influenza were excluded.

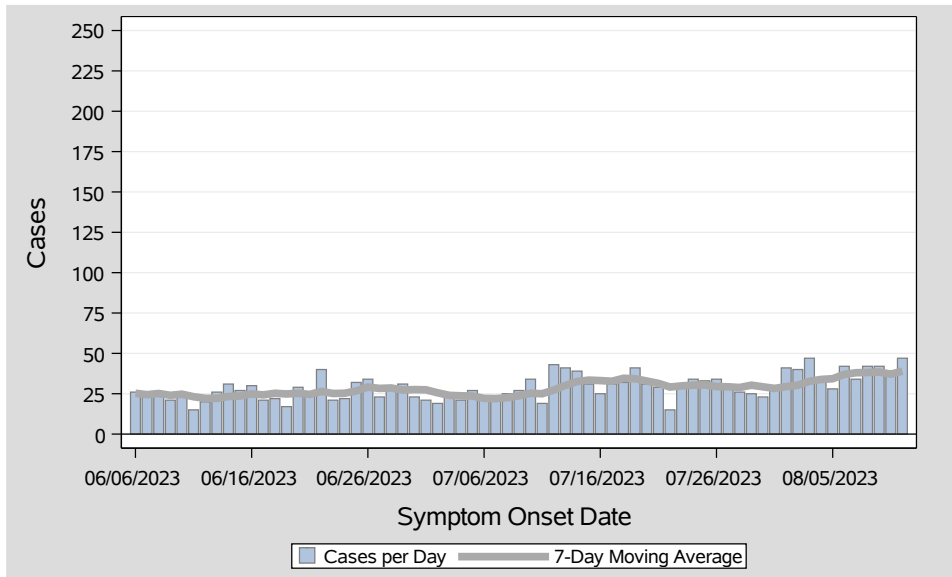


Table 1: COVID-19 Cases per Day, Clark County, NV

Date	Cases Per Day	7-Day Moving Average
Jul 29	25	30.3
Jul 30	23	29.3
Jul 31	27	28.3
Aug 01	41	29.4
Aug 02	40	30.3
Aug 03	47	32.7
Aug 04	34	33.9
Aug 05	28	34.3
Aug 06	42	37.0
Aug 07	34	38.0
Aug 08	42	38.1
Aug 09	42	38.4
Aug 10	38	37.1
Aug 11	47	39.0

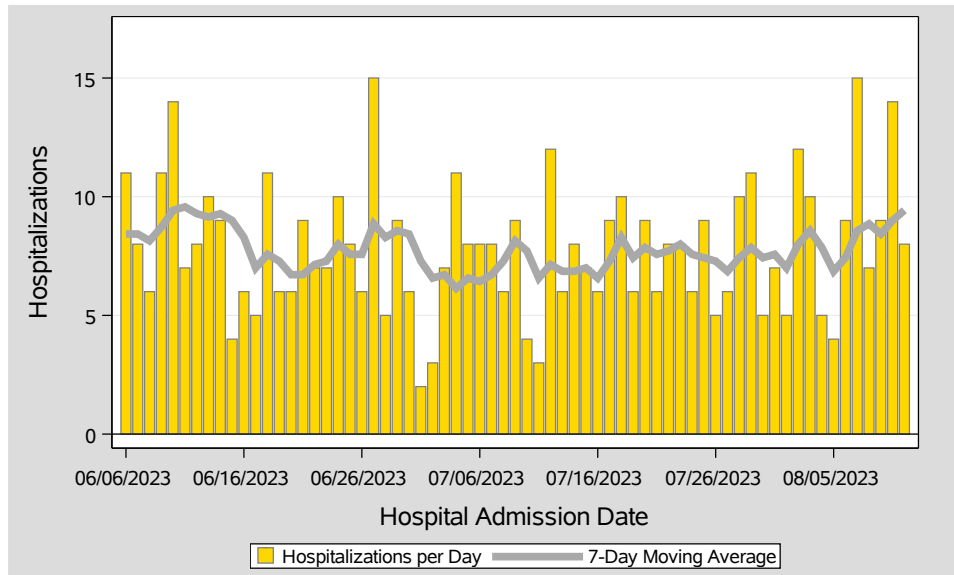


Table 2: COVID-19 Hospitalizations per Day, Clark County, NV

Date	Hospitalizations Per Day	7-Day Moving Average	7-Day Total Hospitalizations per 100K	Hospital Admission Level
Jul 29	11	7.9	2.37	Low
Jul 30	5	7.4	2.24	Low
Jul 31	7	7.6	2.29	Low
Aug 01	5	7.0	2.11	Low
Aug 02	12	8.0	2.42	Low
Aug 03	10	8.6	2.59	Low
Aug 04	5	7.9	2.37	Low
Aug 05	4	6.9	2.07	Low
Aug 06	9	7.4	2.24	Low
Aug 07	15	8.6	2.59	Low
Aug 08	7	8.9	2.67	Low
Aug 09	9	8.4	2.55	Low
Aug 10	14	9.0	2.72	Low
Aug 11	8	9.4	2.85	Low

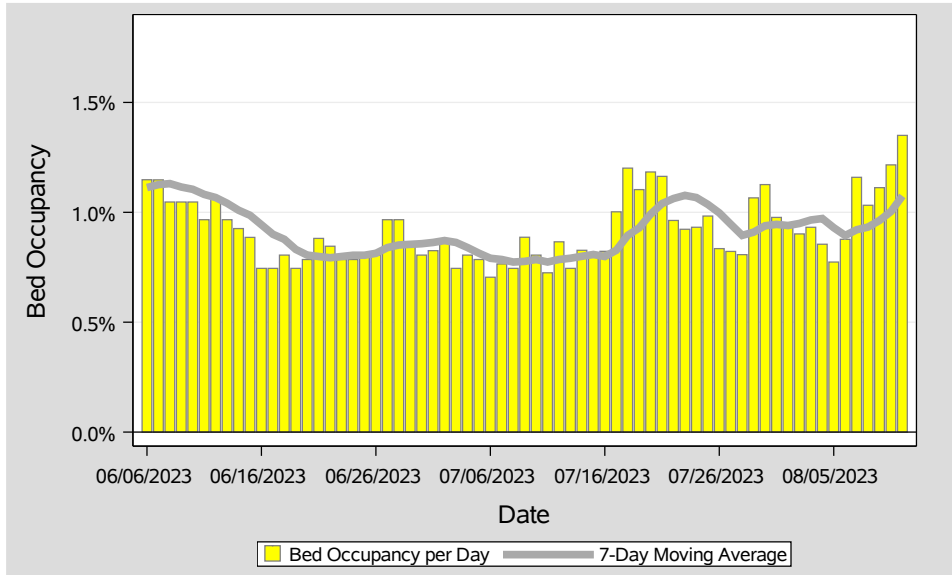


Table 3: Percent of Bed Occupancy per Day, Clark County, NV

Date	Bed Occupancy Per Day	7-Day Moving Average
Jul 29	1.07%	0.91%
Jul 30	1.13%	0.94%
Jul 31	0.98%	0.95%
Aug 01	0.95%	0.94%
Aug 02	0.90%	0.95%
Aug 03	0.93%	0.96%
Aug 04	0.85%	0.97%
Aug 05	0.77%	0.93%
Aug 06	0.88%	0.89%
Aug 07	1.16%	0.92%
Aug 08	1.03%	0.93%
Aug 09	1.11%	0.96%
Aug 10	1.22%	1.00%
Aug 11	1.35%	1.07%

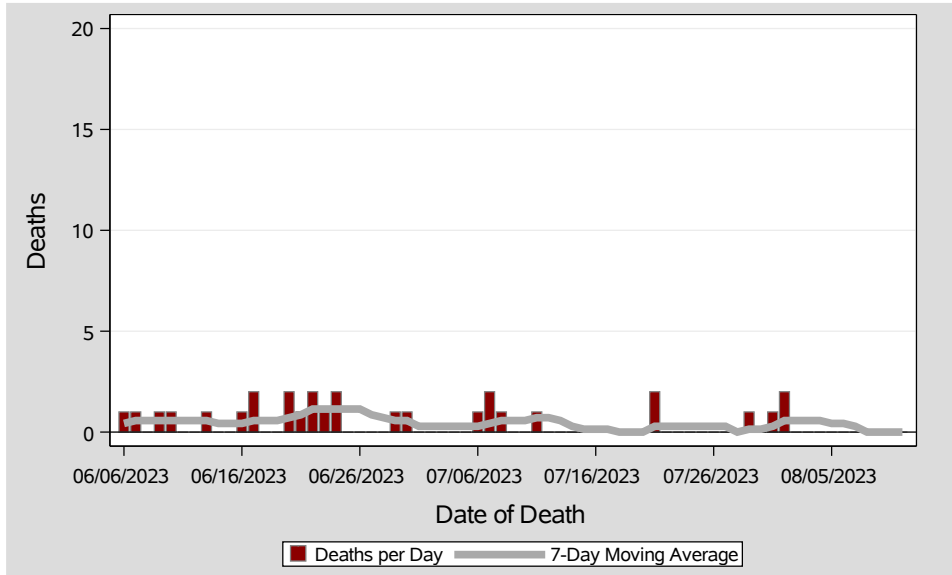


Table 4: COVID-19 Deaths per Day, Clark County, NV

Date	Deaths Per Day	7-Day Moving Average
Jul 29	1	0.1
Jul 30	0	0.1
Jul 31	1	0.3
Aug 01	2	0.6
Aug 02	0	0.6
Aug 03	0	0.6
Aug 04	0	0.6
Aug 05	0	0.4
Aug 06	0	0.4
Aug 07	0	0.3
Aug 08	0	0.0
Aug 09	0	0.0
Aug 10	0	0.0
Aug 11	0	0.0

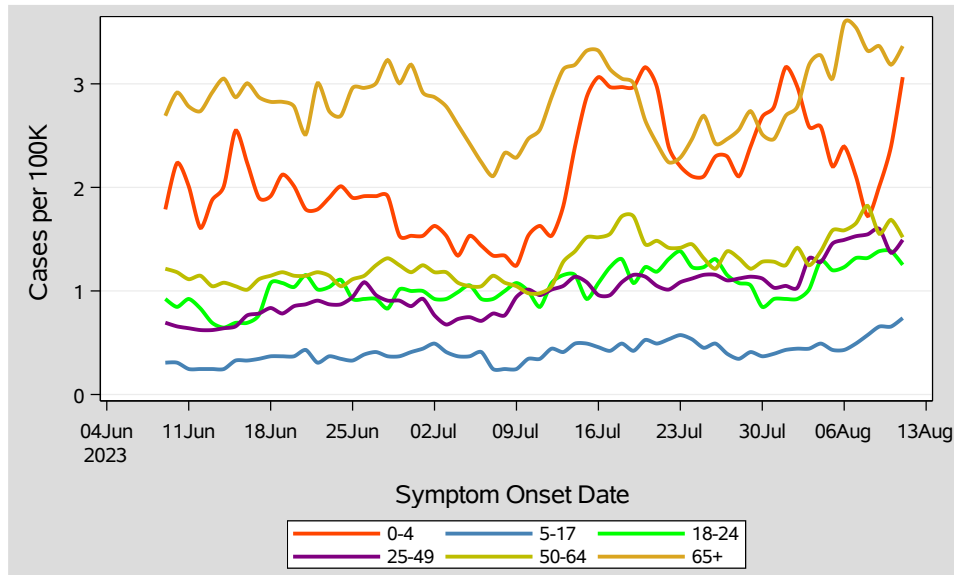


Table 5: 7-Day Average of Daily New Cases per 100K, by Age Group (Years)

Date	0-4	5-17	18-24	25-49	50-64	65+
Jul 29	2.4	0.4	1.1	1.1	1.2	2.7
Jul 30	2.7	0.4	0.8	1.1	1.3	2.5
Jul 31	2.8	0.4	0.9	1.0	1.3	2.5
Aug 01	3.2	0.4	0.9	1.0	1.2	2.7
Aug 02	3.0	0.4	0.9	1.0	1.4	2.8
Aug 03	2.6	0.4	1.0	1.3	1.2	3.2
Aug 04	2.6	0.5	1.3	1.3	1.4	3.3
Aug 05	2.2	0.4	1.2	1.5	1.6	3.1
Aug 06	2.4	0.4	1.2	1.5	1.6	3.6
Aug 07	2.1	0.5	1.3	1.5	1.7	3.5
Aug 08	1.7	0.6	1.3	1.5	1.8	3.3
Aug 09	2.0	0.7	1.4	1.6	1.6	3.4
Aug 10	2.4	0.7	1.4	1.4	1.7	3.2
Aug 11	3.1	0.7	1.3	1.5	1.5	3.4

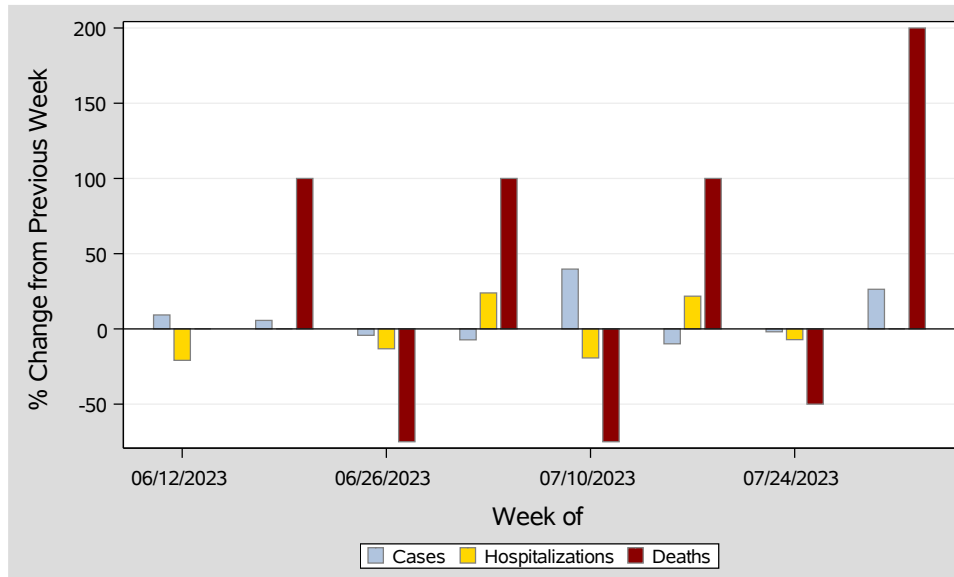


Table 6: Percent Change in Weekly Totals from Previous Week

Week	Case(n)	Cases(%)	Hosp(n)	Hosp(%)	Deaths(n)	Deaths(%)
Jun 12 - Jun 18	177	9.3	53	-20.9	4	0.0
Jun 19 - Jun 25	187	5.6	53	0.0	8	100.0
Jun 26 - Jul 02	179	-4.3	46	-13.2	2	-75.0
Jul 03 - Jul 09	166	-7.3	57	23.9	4	100.0
Jul 10 - Jul 16	232	39.8	46	-19.3	1	-75.0
Jul 17 - Jul 23	209	-9.9	56	21.7	2	100.0
Jul 24 - Jul 30	205	-1.9	52	-7.1	1	-50.0
Jul 31 - Aug 06	259	26.3	52	0.0	3	200.0

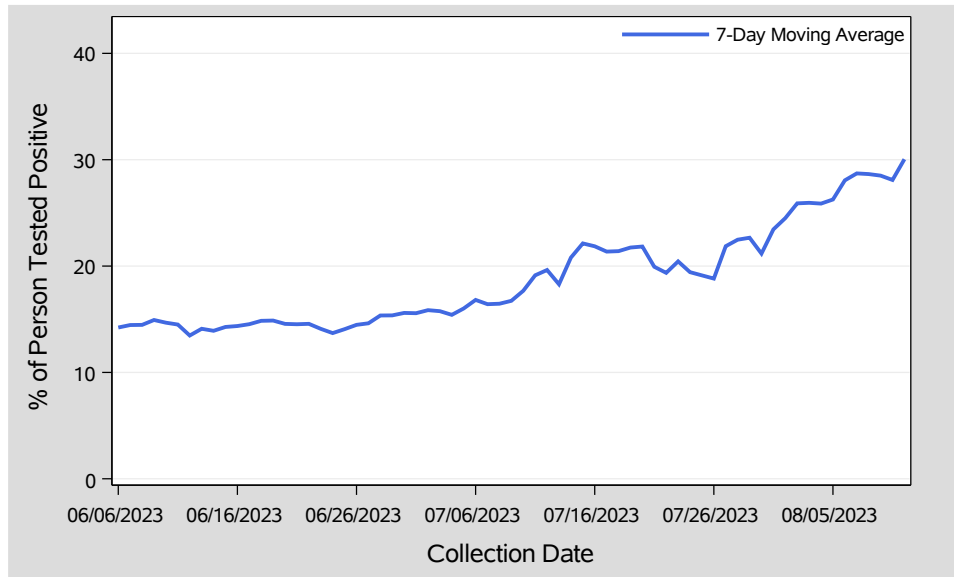


Table 7: Percent of People Receiving COVID-19 PCR Tests Who Have Positive Results

Collection Date	Positive	Negative	Equivocal Unknown	Total	Positive (%)	7-Day Average (%)
Jul 29	36	117	.	153	23.5	22.7
Jul 30	25	125	.	150	16.7	21.2
Jul 31	56	165	.	221	25.3	23.4
Aug 01	59	158	.	217	27.2	24.5
Aug 02	56	111	.	167	33.5	25.9
Aug 03	63	126	.	189	33.3	25.9
Aug 04	45	164	.	209	21.5	25.9
Aug 05	43	121	.	164	26.2	26.3
Aug 06	60	145	.	205	29.3	28.1
Aug 07	70	164	.	234	29.9	28.7
Aug 08	69	189	.	258	26.7	28.6
Aug 09	79	164	.	243	32.5	28.5
Aug 10	71	162	.	233	30.5	28.1
Aug 11	63	116	.	179	35.2	30.0

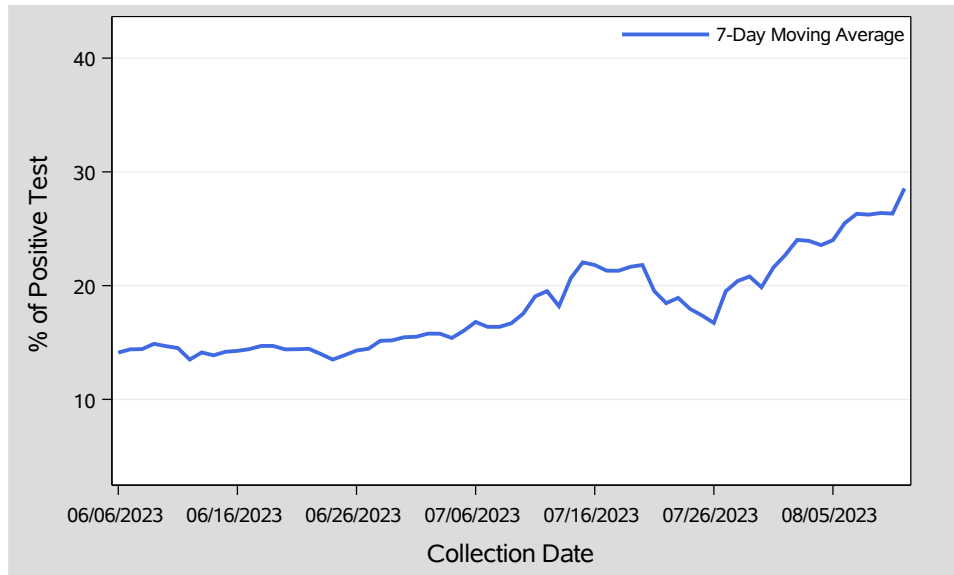


Table 8.1: Percent of Total COVID-19 PCR Tests With Positive Results

Collection Date	Positive	Negative	Equivocal Unknown	Total	Positive (%)	7-Day Average (%)
Jul 29	46	169	.	215	21.4	20.8
Jul 30	35	178	.	213	16.4	19.9
Jul 31	67	240	.	307	21.8	21.6
Aug 01	72	212	.	284	25.4	22.7
Aug 02	73	166	.	239	30.5	24.0
Aug 03	79	177	.	256	30.9	23.9
Aug 04	55	242	.	297	18.5	23.6
Aug 05	57	176	.	233	24.5	24.0
Aug 06	78	211	.	289	27.0	25.5
Aug 07	86	227	.	313	27.5	26.3
Aug 08	76	230	.	306	24.8	26.2
Aug 09	88	191	.	279	31.5	26.4
Aug 10	72	164	.	236	30.5	26.3
Aug 11	70	136	.	206	34.0	28.5

Table 8.2: COVID-19 PCR Test Totals Since Outbreak Start

Positive	Negative	Equivocal Unknown	Total	Positive(%)
834,806	4,844,540	17,437	5,696,783	14.7

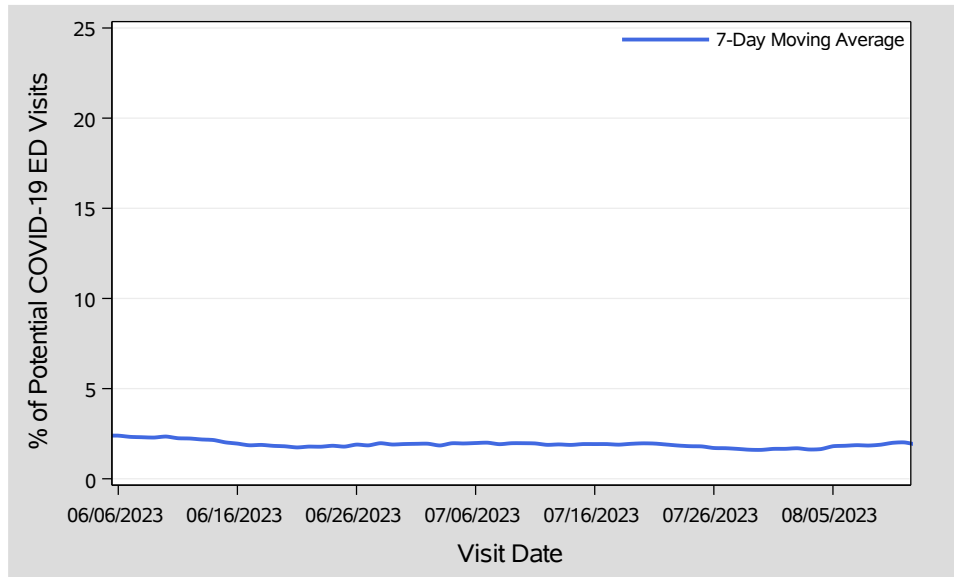


Table 9: Syndromic Surveillance: Percent of ED Visits Potentially Related to COVID-19

Visit Date	Possible COVID Visits	Total ED Visits	(%)	7-Day Average (%)
Jul 29	39	3,012	1.3	1.6
Jul 30	52	2,957	1.8	1.6
Jul 31	59	3,319	1.8	1.7
Aug 01	60	3,321	1.8	1.7
Aug 02	57	3,167	1.8	1.7
Aug 03	46	3,119	1.5	1.6
Aug 04	51	3,132	1.6	1.6
Aug 05	69	2,896	2.4	1.8
Aug 06	55	2,839	1.9	1.8
Aug 07	68	3,372	2.0	1.9
Aug 08	54	3,238	1.7	1.8
Aug 09	67	3,159	2.1	1.9
Aug 10	65	2,954	2.2	2.0
Aug 11	55	3,073	1.8	2.0

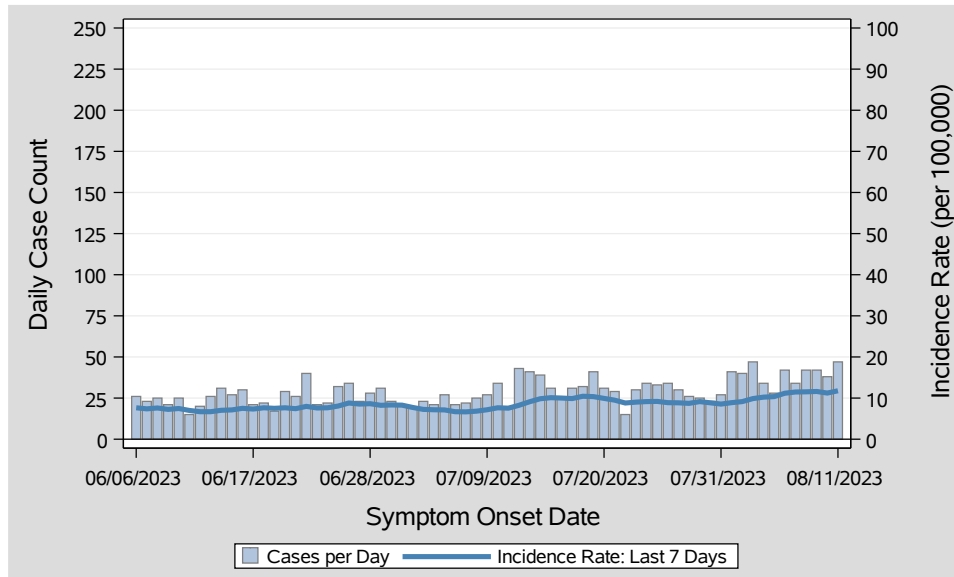


Table 10: COVID-19 Cases per Day and Incidence Rate in the Last 7 Days, Clark County, NV

Onset Date	Cases Per Day	Last 7 Days	
		Total Case Count	Incidence Rate
Jul 29	25	212	9.1
Jul 30	23	205	8.8
Jul 31	27	198	8.5
Aug 01	41	206	8.9
Aug 02	40	212	9.1
Aug 03	47	229	9.9
Aug 04	34	237	10.2
Aug 05	28	240	10.4
Aug 06	42	259	11.2
Aug 07	34	266	11.5
Aug 08	42	267	11.5
Aug 09	42	269	11.6
Aug 10	38	260	11.2
Aug 11	47	273	11.8

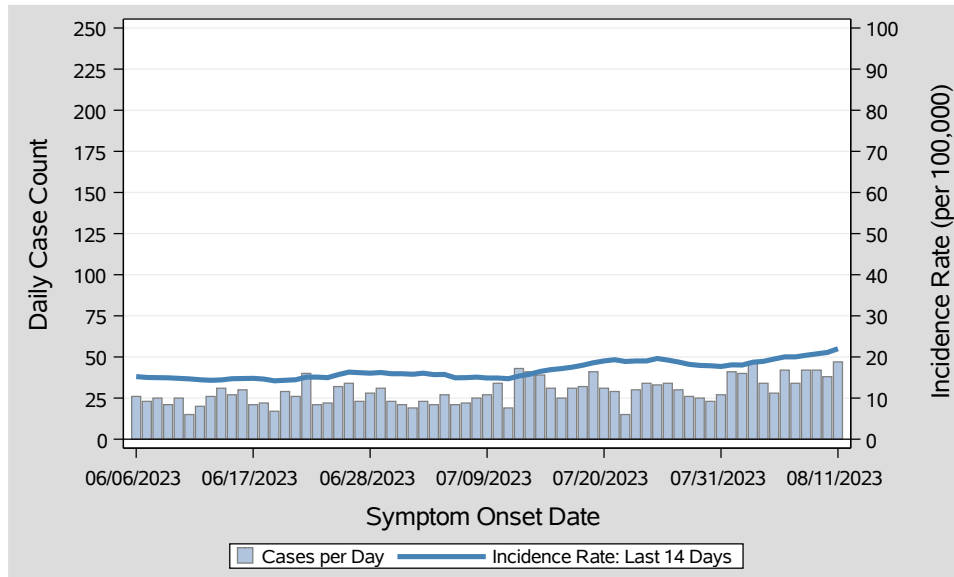


Table 11: COVID-19 Cases per Day and Incidence Rate in the Last 14 Days, Clark County, NV

Onset Date	Cases Per Day	Last 14 Days	
		Total Case Count	Incidence Rate
Jul 29	25	416	17.9
Jul 30	23	414	17.9
Jul 31	27	410	17.7
Aug 01	41	419	18.1
Aug 02	40	418	18.0
Aug 03	47	434	18.7
Aug 04	34	439	18.9
Aug 05	28	452	19.5
Aug 06	42	464	20.0
Aug 07	34	464	20.0
Aug 08	42	473	20.4
Aug 09	42	481	20.7
Aug 10	38	489	21.1
Aug 11	47	510	22.0

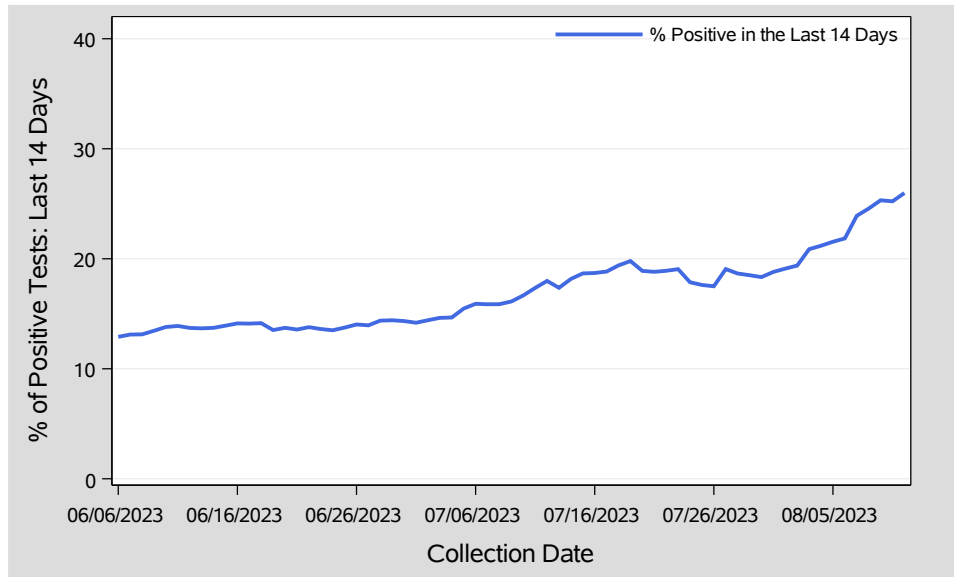


Table 12: Percent of Total COVID-19 PCR Tests With Positive Results in the Last 14 Days, Clark County, NV

Collection Date	Last 14 Days		
	# of Positive Tests	# of Total Tests	% of Positive Tests
Jul 29	754	4,075	18.5
Jul 30	751	4,096	18.3
Jul 31	749	3,983	18.8
Aug 01	772	4,041	19.1
Aug 02	783	4,040	19.4
Aug 03	815	3,905	20.9
Aug 04	823	3,885	21.2
Aug 05	834	3,871	21.5
Aug 06	853	3,904	21.8
Aug 07	892	3,731	23.9
Aug 08	908	3,697	24.6
Aug 09	941	3,717	25.3
Aug 10	933	3,699	25.2
Aug 11	954	3,673	26.0

Report prepared by: Ying Zhang, PhD, MPH (Office of Epidemiology) and Lei Zhang, MS (Office of Informatics)