

## COVID-19 Trends, Clark County, NV

### (FOR OFFICIAL USE ONLY)

Document creation date: August 12, 2023

#### Technical Notes:

- **General notes:** This report uses surveillance data collected by the Southern Nevada Health District. Due to delays related to laboratory processing, reporting, and case investigations, data from the most recent days are less complete than data from older time points. For this reason, as of June 10, 2020 this report will not display data from the previous three days prior to the date that the report was created. As many case investigations are ongoing, all data presented in this report are considered preliminary and subject to change. Data regarding cases, hospitalizations, deaths, and labs were last updated August 12, 2023 at 12:00 AM, and data is reported up through August 8, 2023.
- **Cases:** Symptom onset date was used for aggregating cases. If symptom onset date was missing, the following dates were substituted in this order: diagnosis date, lab collection date, report date (date case was reported to SNHD), event creation date (date case was entered into EpiTrax, SNHD's surveillance system).
- **Hospitalizations:** Admission date reported the the Nevada Hospital Association was used for aggregating hospitalizations. One person could have more than one admissions.
- **Hospital admission levels** were based on 7-day total of new COVID-19 hospital admissions per 100,000 population: high means greater than or equal to 20.0 per 100,000, medium means less than 20.0 but greater than or equal to 10.0 per 100,000, low means less than 10.0 per 100,000.
- **Deaths:** Date of death was used for aggregating deaths. If date of death was missing, report date was used.
- The population data source for calculating rate estimates was from Nevada State Demographer "2019 ASRHO Estimates and Projections Summary 2000 to 2038", 2020 projection, vintage 2019. Rates for individual age categories may be based on small numbers, which may give unstable estimates.

- The "Percent Change in Weekly Totals from Previous Week" graph and table display the percentage change in weekly totals of cases, hospitalizations, and deaths from the previous weekly totals. For the purpose of calculating weekly totals, weeks start on Monday and end on Sunday. A particular week will only be displayed in the report if data of every day in that week has been released. For example, if the report was created on June 10, 2020, the last day of reported data will be from Saturday June 6. Since data is only available for six of the seven days in that particular week, that week will not be included in the report.
- All graphs in this report show data from approximately 60 days prior to the date of the report.
- All tables show data from the last 14 days before the current date, with the exception of the "Percent Change in Weekly Totals from Previous Week", which displays data from the previous eight completed weeks.
- For the "Percent of People Receiving COVID-19 PCR Tests Who Have Positive Results" graph, one person who has multiple specimens collected in one day is only reported once. If any test of that person is positive, that person counts as a positive result. If all tests of that individual are negative, that person counts as a negative result. Laboratory tests were included if they were a test assessing for the presence of SARS-CoV-2 viral RNA, for example PCR tests. Antibody and antigen tests were excluded.
- For the "Percent of Total COVID-19 PCR Tests With Positive Results" graph, the numerator is the total number of positive tests, and the denominator is the total number of tests performed. Multiple tests are possible for each individual per day if more than one sample was collected. Laboratory tests were included if they were a test assessing for the presence of SARS-CoV-2 viral RNA, for example PCR tests. Antibody and antigen tests were excluded. Laboratory test results were included if they were reported electronically by laboratories or providers. Tests were excluded if entered by SNHD surveillance staff manually, as surveillance staff do not typically enter negative results, and this would bias the results of the graph in the positive direction.
- Syndromic Surveillance: Data source is the Electronic Surveillance System for the Early Notification of Community-based Epidemics (ESSENCE) Nevada. These data capture the Percent of emergency department visits that could presumptively be related to COVID-19 at non-federal acute care hospitals in Clark County. This includes visits where 1) the chief complaint of the patient was a symptom of coronavirus-like illness (i.e., fever and chills, cough, shortness of breath); or 2) a patient was diagnosed with symptoms of coronavirus-like illness; or 3) a patient was diagnosed with COVID-19. Visits among patients who were diagnosed with Influenza were excluded.

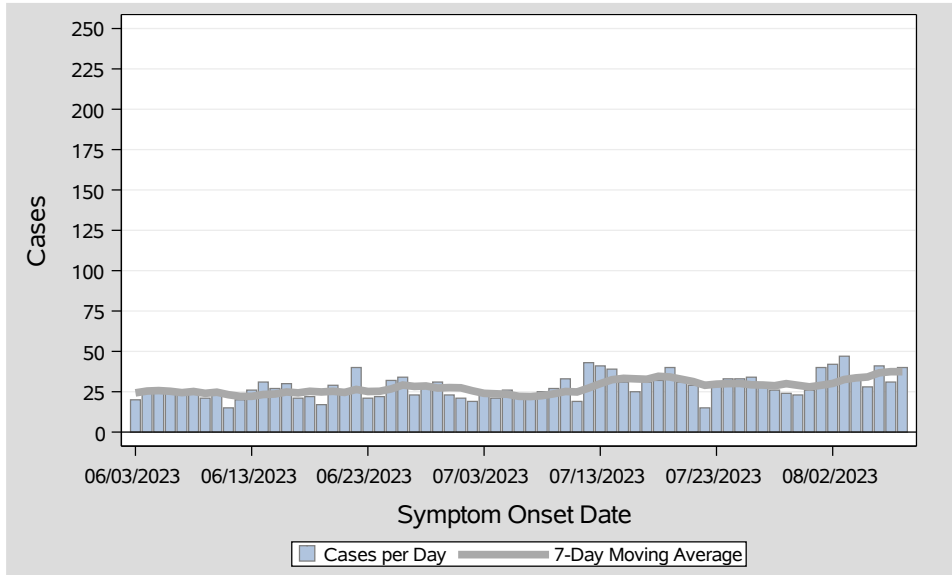


Table 1: COVID-19 Cases per Day, Clark County, NV

Date	Cases Per Day	7-Day Moving Average
Jul 26	34	29.3
Jul 27	30	29.1
Jul 28	26	28.7
Jul 29	24	30.0
Jul 30	23	29.0
Jul 31	26	28.0
Aug 01	40	29.0
Aug 02	42	30.1
Aug 03	47	32.6
Aug 04	33	33.6
Aug 05	28	34.1
Aug 06	41	36.7
Aug 07	31	37.4
Aug 08	40	37.4

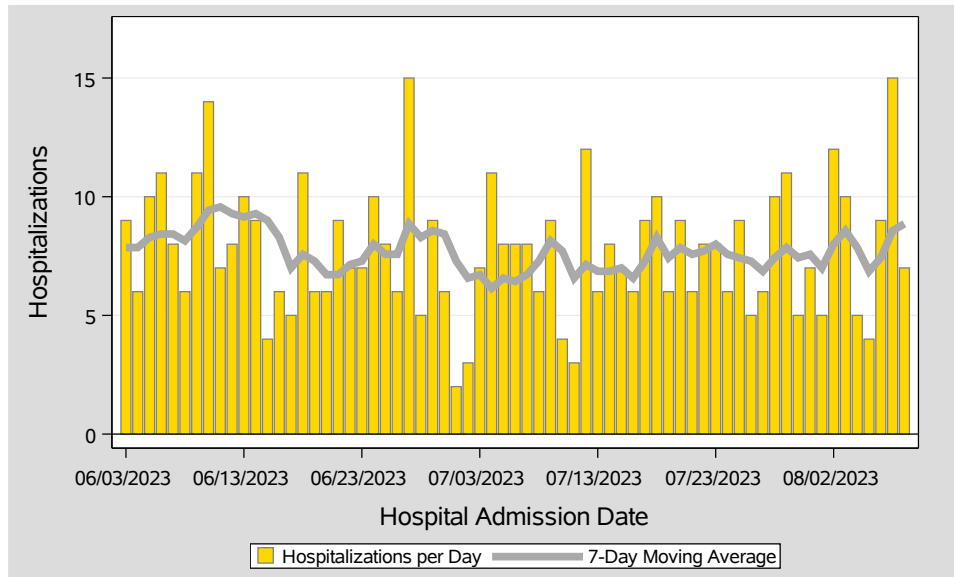


Table 2: COVID-19 Hospitalizations per Day, Clark County, NV

Date	Hospitalizations Per Day	7-Day Moving Average	7-Day Total Hospitalizations per 100K	Hospital Admission Level
Jul 26	5	7.3	2.20	Low
Jul 27	6	6.9	2.07	Low
Jul 28	10	7.4	2.24	Low
Jul 29	11	7.9	2.37	Low
Jul 30	5	7.4	2.24	Low
Jul 31	7	7.6	2.29	Low
Aug 01	5	7.0	2.11	Low
Aug 02	12	8.0	2.42	Low
Aug 03	10	8.6	2.59	Low
Aug 04	5	7.9	2.37	Low
Aug 05	4	6.9	2.07	Low
Aug 06	9	7.4	2.24	Low
Aug 07	15	8.6	2.59	Low
Aug 08	7	8.9	2.67	Low

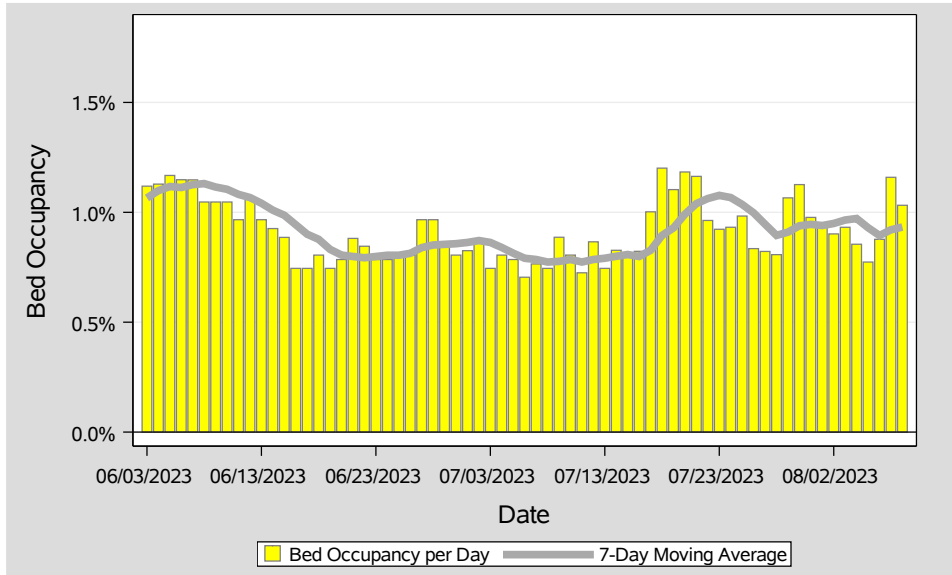


Table 3: Percent of Bed Occupancy per Day, Clark County, NV

Date	Bed Occupancy Per Day	7-Day Moving Average
Jul 26	0.83%	1.00%
Jul 27	0.82%	0.95%
Jul 28	0.81%	0.89%
Jul 29	1.07%	0.91%
Jul 30	1.13%	0.94%
Jul 31	0.98%	0.95%
Aug 01	0.95%	0.94%
Aug 02	0.90%	0.95%
Aug 03	0.93%	0.96%
Aug 04	0.85%	0.97%
Aug 05	0.77%	0.93%
Aug 06	0.88%	0.89%
Aug 07	1.16%	0.92%
Aug 08	1.03%	0.93%

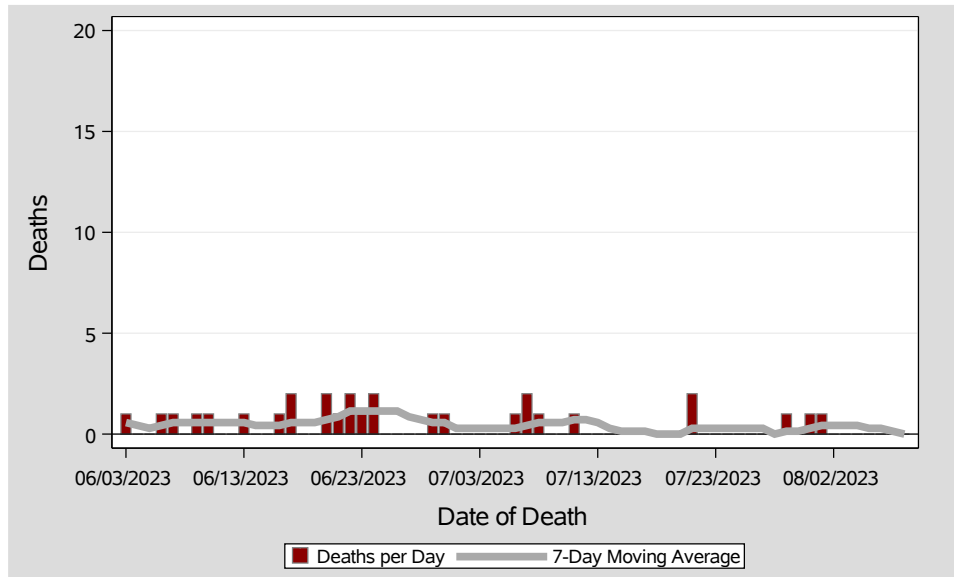


Table 4: COVID-19 Deaths per Day, Clark County, NV

Date	Deaths Per Day	7-Day Moving Average
Jul 26	0	0.3
Jul 27	0	0.3
Jul 28	0	0.0
Jul 29	1	0.1
Jul 30	0	0.1
Jul 31	1	0.3
Aug 01	1	0.4
Aug 02	0	0.4
Aug 03	0	0.4
Aug 04	0	0.4
Aug 05	0	0.3
Aug 06	0	0.3
Aug 07	0	0.1
Aug 08	0	0.0

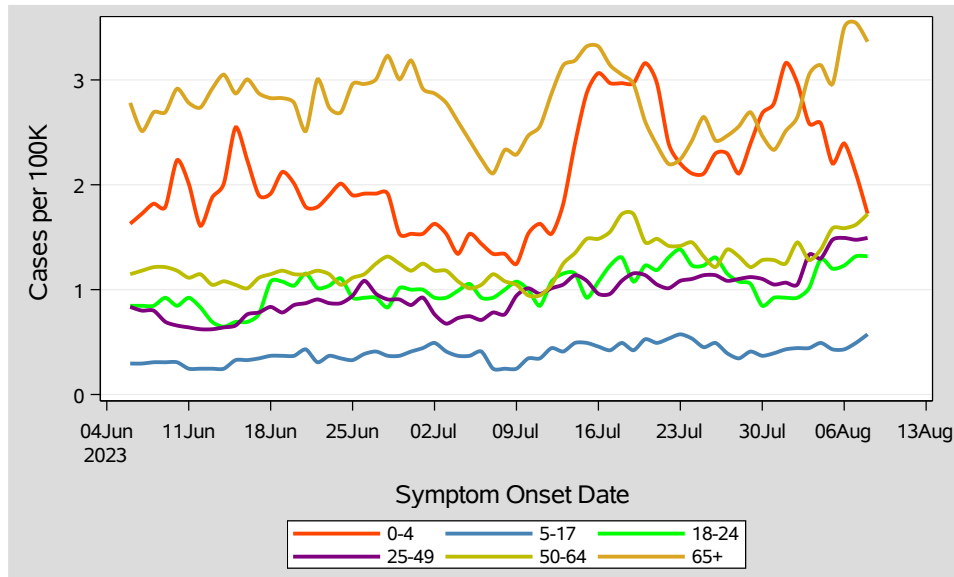


Table 5: 7-Day Average of Daily New Cases per 100K, by Age Group (Years)

Date	0-4	5-17	18-24	25-49	50-64	65+
Jul 26	2.3	0.5	1.3	1.1	1.2	2.4
Jul 27	2.3	0.4	1.2	1.1	1.4	2.5
Jul 28	2.1	0.3	1.1	1.1	1.3	2.6
Jul 29	2.4	0.4	1.1	1.1	1.2	2.7
Jul 30	2.7	0.4	0.8	1.1	1.3	2.5
Jul 31	2.8	0.4	0.9	1.0	1.3	2.3
Aug 01	3.2	0.4	0.9	1.1	1.2	2.5
Aug 02	3.0	0.4	0.9	1.0	1.5	2.6
Aug 03	2.6	0.4	1.0	1.3	1.3	3.1
Aug 04	2.6	0.5	1.3	1.3	1.4	3.1
Aug 05	2.2	0.4	1.2	1.5	1.6	3.0
Aug 06	2.4	0.4	1.2	1.5	1.6	3.5
Aug 07	2.1	0.5	1.3	1.5	1.6	3.5
Aug 08	1.7	0.6	1.3	1.5	1.7	3.4

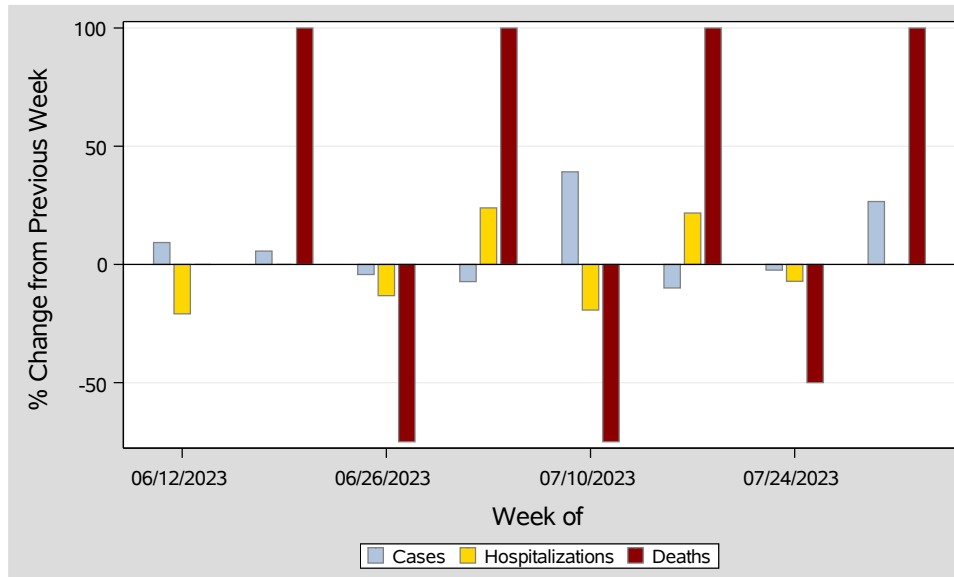


Table 6: Percent Change in Weekly Totals from Previous Week

Week	Case(n)	Cases(%)	Hosp(n)	Hosp(%)	Deaths(n)	Deaths(%)
Jun 12 - Jun 18	177	9.3	53	-20.9	4	0.0
Jun 19 - Jun 25	187	5.6	53	0.0	8	100.0
Jun 26 - Jul 02	179	-4.3	46	-13.2	2	-75.0
Jul 03 - Jul 09	166	-7.3	57	23.9	4	100.0
Jul 10 - Jul 16	231	39.2	46	-19.3	1	-75.0
Jul 17 - Jul 23	208	-10.0	56	21.7	2	100.0
Jul 24 - Jul 30	203	-2.4	52	-7.1	1	-50.0
Jul 31 - Aug 06	257	26.6	52	0.0	2	100.0



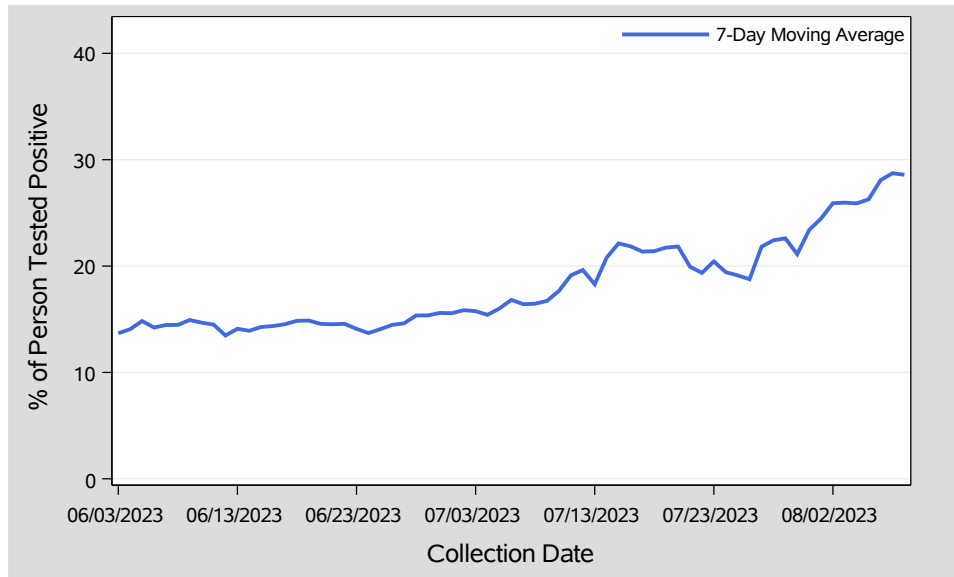


Table 7: Percent of People Receiving COVID-19 PCR Tests Who Have Positive Results

Collection Date	Positive	Negative	Equivocal Unknown	Total	Positive (%)	7-Day Average (%)
Jul 26	45	147	.	192	23.4	18.8
Jul 27	64	130	.	194	33.0	21.8
Jul 28	37	131	.	168	22.0	22.4
Jul 29	36	117	.	153	23.5	22.6
Jul 30	25	125	.	150	16.7	21.1
Jul 31	56	165	.	221	25.3	23.4
Aug 01	59	157	.	216	27.3	24.5
Aug 02	56	111	.	167	33.5	25.9
Aug 03	63	126	.	189	33.3	26.0
Aug 04	45	164	.	209	21.5	25.9
Aug 05	43	121	.	164	26.2	26.3
Aug 06	60	145	.	205	29.3	28.1
Aug 07	70	164	.	234	29.9	28.7
Aug 08	67	188	.	255	26.3	28.6

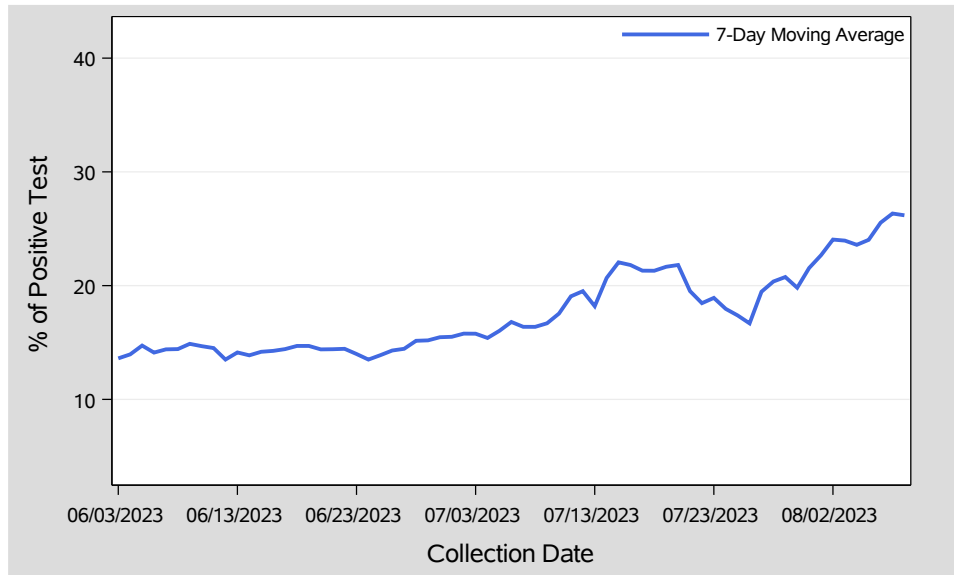


Table 8.1: Percent of Total COVID-19 PCR Tests With Positive Results

Collection Date	Positive	Negative	Equivocal Unknown	Total	Positive (%)	7-Day Average (%)
Jul 26	54	204	.	258	20.9	16.7
Jul 27	80	174	.	254	31.5	19.5
Jul 28	49	183	.	232	21.1	20.4
Jul 29	46	169	.	215	21.4	20.8
Jul 30	35	178	.	213	16.4	19.8
Jul 31	67	240	.	307	21.8	21.5
Aug 01	72	210	.	282	25.5	22.7
Aug 02	73	166	.	239	30.5	24.0
Aug 03	79	177	.	256	30.9	24.0
Aug 04	55	242	.	297	18.5	23.6
Aug 05	57	176	.	233	24.5	24.0
Aug 06	78	211	.	289	27.0	25.5
Aug 07	86	227	.	313	27.5	26.3
Aug 08	74	229	.	303	24.4	26.2

Table 8.2: COVID-19 PCR Test Totals Since Outbreak Start

Positive	Negative	Equivocal Unknown	Total	Positive(%)
834,573	4,844,046	17,437	5,696,056	14.7

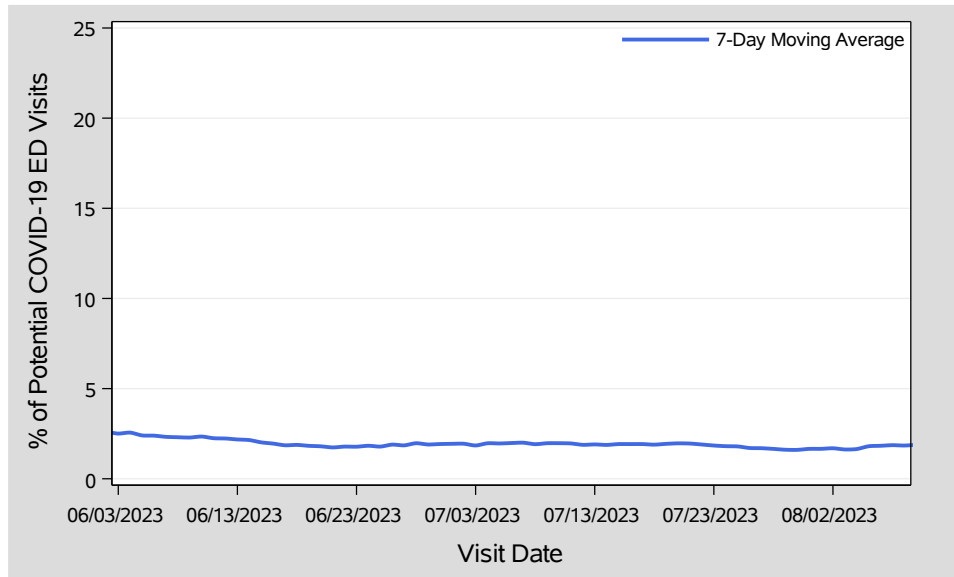


Table 9: Syndromic Surveillance: Percent of ED Visits Potentially Related to COVID-19

Visit Date	Possible COVID Visits	Total ED Visits	(%)	7-Day Average (%)
Jul 26	53	3,357	1.6	1.7
Jul 27	61	3,138	1.9	1.7
Jul 28	49	3,344	1.5	1.7
Jul 29	39	3,012	1.3	1.6
Jul 30	52	2,957	1.8	1.6
Jul 31	59	3,319	1.8	1.7
Aug 01	60	3,321	1.8	1.7
Aug 02	57	3,167	1.8	1.7
Aug 03	46	3,119	1.5	1.6
Aug 04	51	3,132	1.6	1.6
Aug 05	69	2,895	2.4	1.8
Aug 06	55	2,839	1.9	1.8
Aug 07	68	3,372	2.0	1.9
Aug 08	54	3,238	1.7	1.8

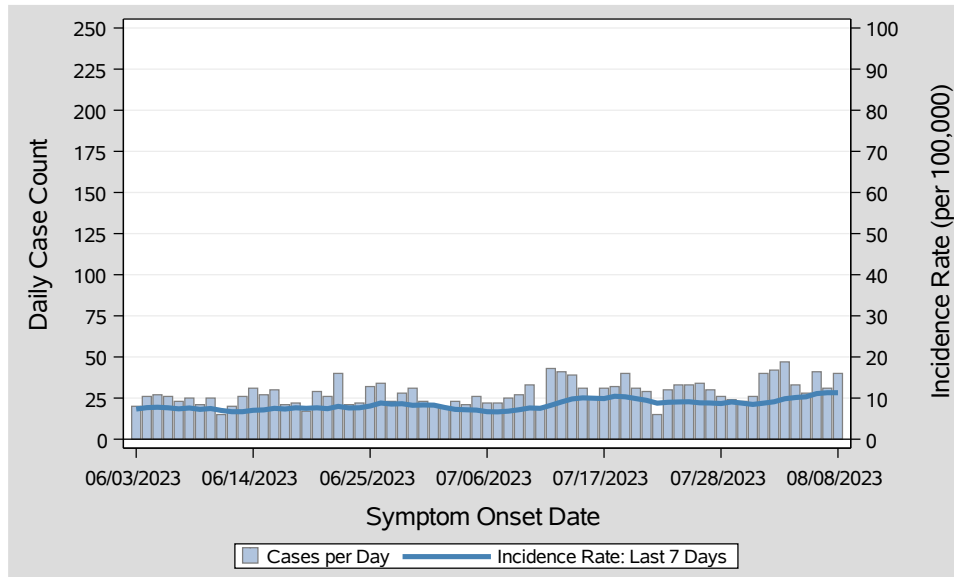


Table 10: COVID-19 Cases per Day and Incidence Rate in the Last 7 Days, Clark County, NV

Onset Date	Cases Per Day	Last 7 Days	
		Total Case Count	Incidence Rate
Jul 26	34	205	8.8
Jul 27	30	204	8.8
Jul 28	26	201	8.7
Jul 29	24	210	9.1
Jul 30	23	203	8.8
Jul 31	26	196	8.5
Aug 01	40	203	8.8
Aug 02	42	211	9.1
Aug 03	47	228	9.8
Aug 04	33	235	10.1
Aug 05	28	239	10.3
Aug 06	41	257	11.1
Aug 07	31	262	11.3
Aug 08	40	262	11.3

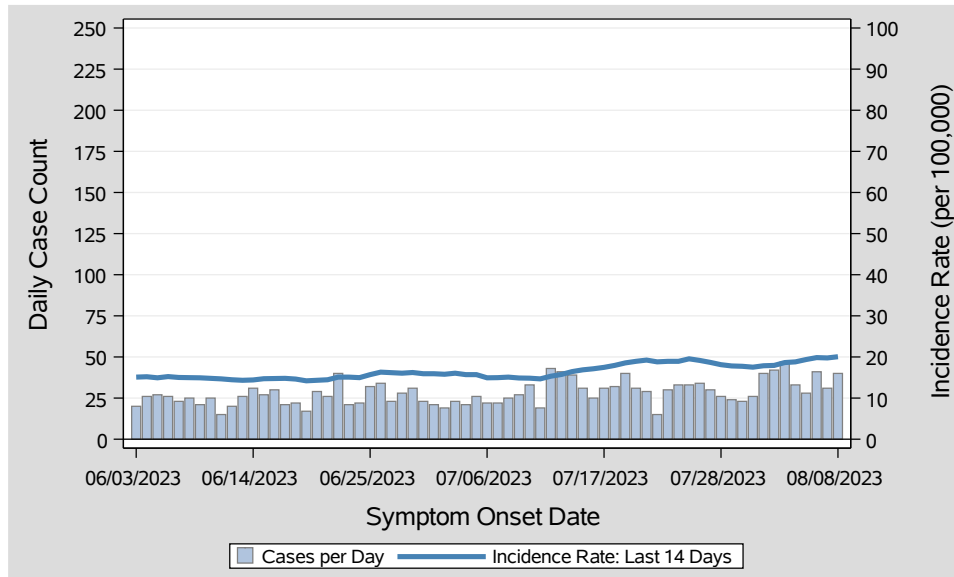


Table 11: COVID-19 Cases per Day and Incidence Rate in the Last 14 Days, Clark County, NV

Onset Date	Cases Per Day	Last 14 Days	
		Total Case Count	Incidence Rate
Jul 26	34	444	19.2
Jul 27	30	433	18.7
Jul 28	26	420	18.1
Jul 29	24	413	17.8
Jul 30	23	411	17.7
Jul 31	26	406	17.5
Aug 01	40	414	17.9
Aug 02	42	416	17.9
Aug 03	47	432	18.6
Aug 04	33	436	18.8
Aug 05	28	449	19.4
Aug 06	41	460	19.8
Aug 07	31	458	19.8
Aug 08	40	465	20.1

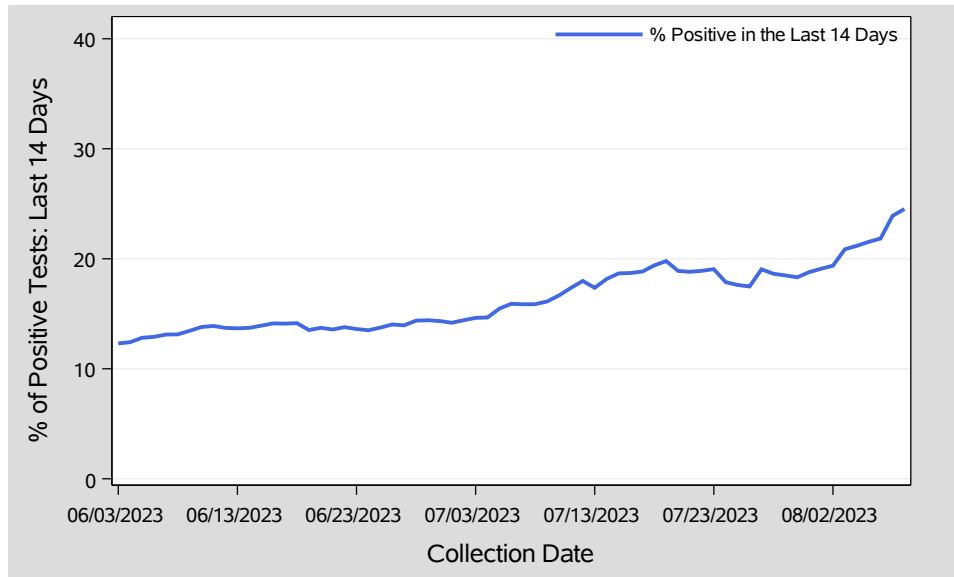


Table 12: Percent of Total COVID-19 PCR Tests With Positive Results in the Last 14 Days, Clark County, NV

Collection Date	Last 14 Days		
	# of Positive Tests	# of Total Tests	% of Positive Tests
Jul 26	720	4,119	17.5
Jul 27	756	3,970	19.0
Jul 28	750	4,024	18.6
Jul 29	753	4,074	18.5
Jul 30	750	4,095	18.3
Jul 31	748	3,982	18.8
Aug 01	771	4,038	19.1
Aug 02	782	4,037	19.4
Aug 03	814	3,902	20.9
Aug 04	822	3,882	21.2
Aug 05	833	3,868	21.5
Aug 06	852	3,901	21.8
Aug 07	891	3,728	23.9
Aug 08	905	3,691	24.5

Report prepared by: Ying Zhang, PhD, MPH (Office of Epidemiology) and Lei Zhang, MS (Office of Informatics)