

COVID-19 Trends, Clark County, NV

(FOR OFFICIAL USE ONLY)

Document creation date: August 10, 2023

Technical Notes:

- **General notes:** This report uses surveillance data collected by the Southern Nevada Health District. Due to delays related to laboratory processing, reporting, and case investigations, data from the most recent days are less complete than data from older time points. For this reason, as of June 10, 2020 this report will not display data from the previous three days prior to the date that the report was created. As many case investigations are ongoing, all data presented in this report are considered preliminary and subject to change. Data regarding cases, hospitalizations, deaths, and labs were last updated August 10, 2023 at 12:00 AM, and data is reported up through August 6, 2023.
- **Cases:** Symptom onset date was used for aggregating cases. If symptom onset date was missing, the following dates were substituted in this order: diagnosis date, lab collection date, report date (date case was reported to SNHD), event creation date (date case was entered into EpiTrax, SNHD's surveillance system).
- **Hospitalizations:** Admission date reported the the Nevada Hospital Association was used for aggregating hospitalizations. One person could have more than one admissions.
- **Hospital admission levels** were based on 7-day total of new COVID-19 hospital admissions per 100,000 population: high means greater than or equal to 20.0 per 100,000, medium means less than 20.0 but greater than or equal to 10.0 per 100,000, low means less than 10.0 per 100,000.
- **Deaths:** Date of death was used for aggregating deaths. If date of death was missing, report date was used.
- The population data source for calculating rate estimates was from Nevada State Demographer "2019 ASRHO Estimates and Projections Summary 2000 to 2038", 2020 projection, vintage 2019. Rates for individual age categories may be based on small numbers, which may give unstable estimates.

- The "Percent Change in Weekly Totals from Previous Week" graph and table display the percentage change in weekly totals of cases, hospitalizations, and deaths from the previous weekly totals. For the purpose of calculating weekly totals, weeks start on Monday and end on Sunday. A particular week will only be displayed in the report if data of every day in that week has been released. For example, if the report was created on June 10, 2020, the last day of reported data will be from Saturday June 6. Since data is only available for six of the seven days in that particular week, that week will not be included in the report.
- All graphs in this report show data from approximately 60 days prior to the date of the report.
- All tables show data from the last 14 days before the current date, with the exception of the "Percent Change in Weekly Totals from Previous Week", which displays data from the previous eight completed weeks.
- For the "Percent of People Receiving COVID-19 PCR Tests Who Have Positive Results" graph, one person who has multiple specimens collected in one day is only reported once. If any test of that person is positive, that person counts as a positive result. If all tests of that individual are negative, that person counts as a negative result. Laboratory tests were included if they were a test assessing for the presence of SARS-CoV-2 viral RNA, for example PCR tests. Antibody and antigen tests were excluded.
- For the "Percent of Total COVID-19 PCR Tests With Positive Results" graph, the numerator is the total number of positive tests, and the denominator is the total number of tests performed. Multiple tests are possible for each individual per day if more than one sample was collected. Laboratory tests were included if they were a test assessing for the presence of SARS-CoV-2 viral RNA, for example PCR tests. Antibody and antigen tests were excluded. Laboratory test results were included if they were reported electronically by laboratories or providers. Tests were excluded if entered by SNHD surveillance staff manually, as surveillance staff do not typically enter negative results, and this would bias the results of the graph in the positive direction.
- Syndromic Surveillance: Data source is the Electronic Surveillance System for the Early Notification of Community-based Epidemics (ESSENCE) Nevada. These data capture the Percent of emergency department visits that could presumptively be related to COVID-19 at non-federal acute care hospitals in Clark County. This includes visits where 1) the chief complaint of the patient was a symptom of coronavirus-like illness (i.e., fever and chills, cough, shortness of breath); or 2) a patient was diagnosed with symptoms of coronavirus-like illness; or 3) a patient was diagnosed with COVID-19. Visits among patients who were diagnosed with Influenza were excluded.

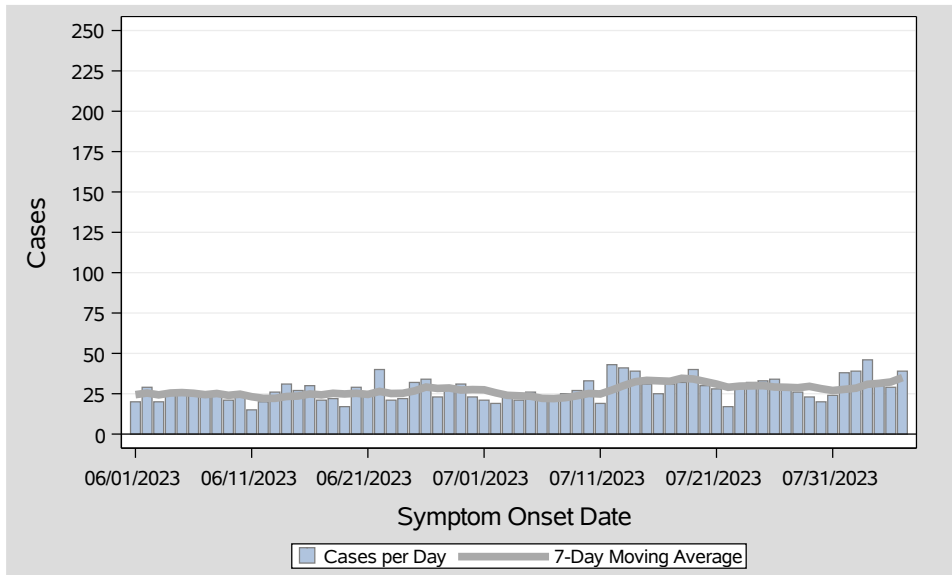


Table 1: COVID-19 Cases per Day, Clark County, NV

Date	Cases Per Day	7-Day Moving Average
Jul 24	32	29.9
Jul 25	33	30.0
Jul 26	34	29.1
Jul 27	29	29.0
Jul 28	26	28.7
Jul 29	23	29.6
Jul 30	20	28.1
Jul 31	24	27.0
Aug 01	38	27.7
Aug 02	39	28.4
Aug 03	46	30.9
Aug 04	30	31.4
Aug 05	29	32.3
Aug 06	39	35.0

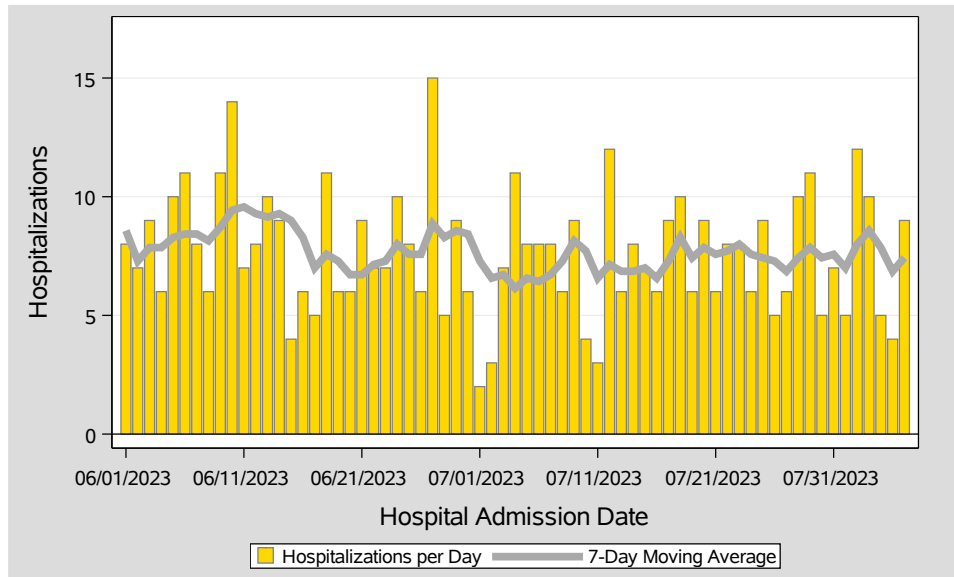


Table 2: COVID-19 Hospitalizations per Day, Clark County, NV

Date	Hospitalizations Per Day	7-Day Moving Average	7-Day Total Hospitalizations per 100K	Hospital Admission Level
Jul 24	6	7.6	2.29	Low
Jul 25	9	7.4	2.24	Low
Jul 26	5	7.3	2.20	Low
Jul 27	6	6.9	2.07	Low
Jul 28	10	7.4	2.24	Low
Jul 29	11	7.9	2.37	Low
Jul 30	5	7.4	2.24	Low
Jul 31	7	7.6	2.29	Low
Aug 01	5	7.0	2.11	Low
Aug 02	12	8.0	2.42	Low
Aug 03	10	8.6	2.59	Low
Aug 04	5	7.9	2.37	Low
Aug 05	4	6.9	2.07	Low
Aug 06	9	7.4	2.24	Low

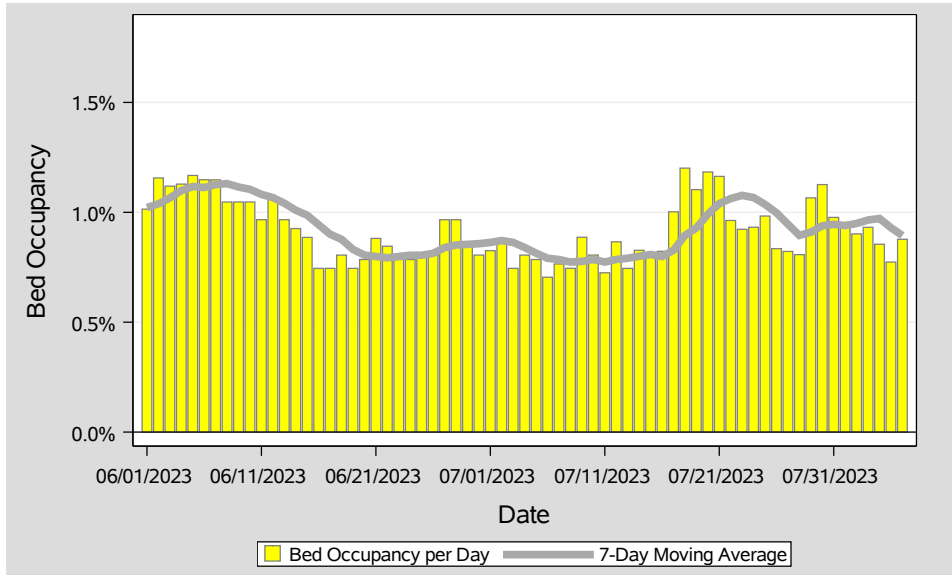


Table 3: Percent of Bed Occupancy per Day, Clark County, NV

Date	Bed Occupancy Per Day	7-Day Moving Average
Jul 24	0.93%	1.07%
Jul 25	0.98%	1.04%
Jul 26	0.83%	1.00%
Jul 27	0.82%	0.95%
Jul 28	0.81%	0.89%
Jul 29	1.07%	0.91%
Jul 30	1.13%	0.94%
Jul 31	0.98%	0.95%
Aug 01	0.95%	0.94%
Aug 02	0.90%	0.95%
Aug 03	0.93%	0.96%
Aug 04	0.85%	0.97%
Aug 05	0.77%	0.93%
Aug 06	0.88%	0.89%

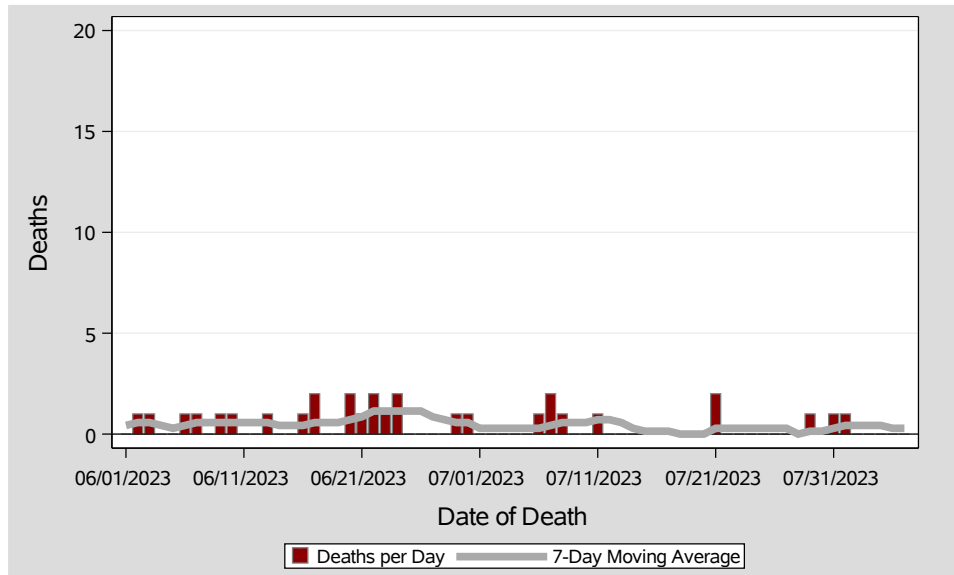


Table 4: COVID-19 Deaths per Day, Clark County, NV

Date	Deaths Per Day	7-Day Moving Average
Jul 24	0	0.3
Jul 25	0	0.3
Jul 26	0	0.3
Jul 27	0	0.3
Jul 28	0	0.0
Jul 29	1	0.1
Jul 30	0	0.1
Jul 31	1	0.3
Aug 01	1	0.4
Aug 02	0	0.4
Aug 03	0	0.4
Aug 04	0	0.4
Aug 05	0	0.3
Aug 06	0	0.3

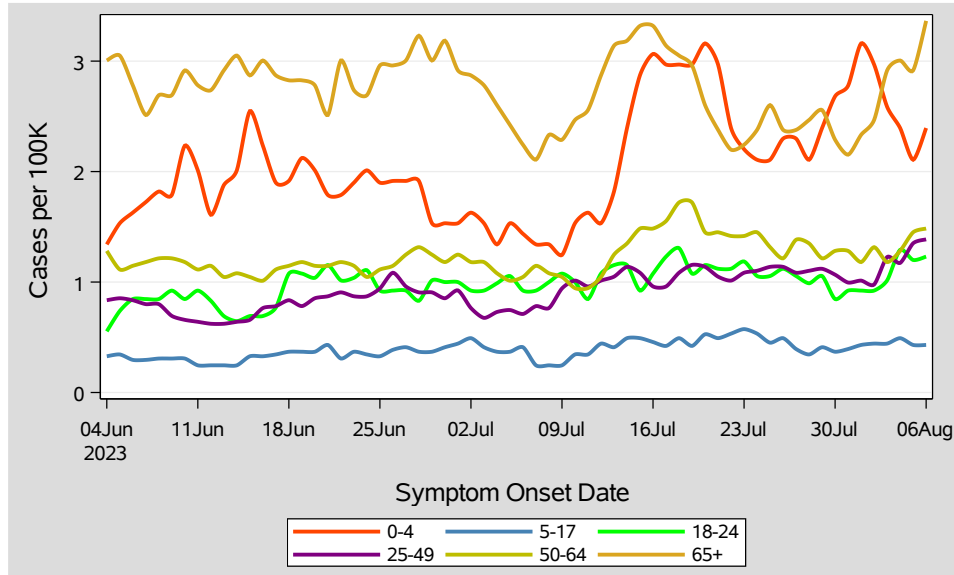


Table 5: 7-Day Average of Daily New Cases per 100K, by Age Group (Years)

Date	0-4	5-17	18-24	25-49	50-64	65+
Jul 24	2.1	0.5	1.1	1.1	1.5	2.4
Jul 25	2.1	0.5	1.1	1.1	1.3	2.6
Jul 26	2.3	0.5	1.1	1.1	1.2	2.4
Jul 27	2.3	0.4	1.1	1.1	1.4	2.4
Jul 28	2.1	0.3	1.0	1.1	1.3	2.5
Jul 29	2.4	0.4	1.1	1.1	1.2	2.6
Jul 30	2.7	0.4	0.8	1.1	1.3	2.3
Jul 31	2.8	0.4	0.9	1.0	1.3	2.2
Aug 01	3.2	0.4	0.9	1.0	1.2	2.3
Aug 02	3.0	0.4	0.9	1.0	1.3	2.5
Aug 03	2.6	0.4	1.0	1.2	1.2	2.9
Aug 04	2.4	0.5	1.3	1.2	1.3	3.0
Aug 05	2.1	0.4	1.2	1.4	1.5	2.9
Aug 06	2.4	0.4	1.2	1.4	1.5	3.4

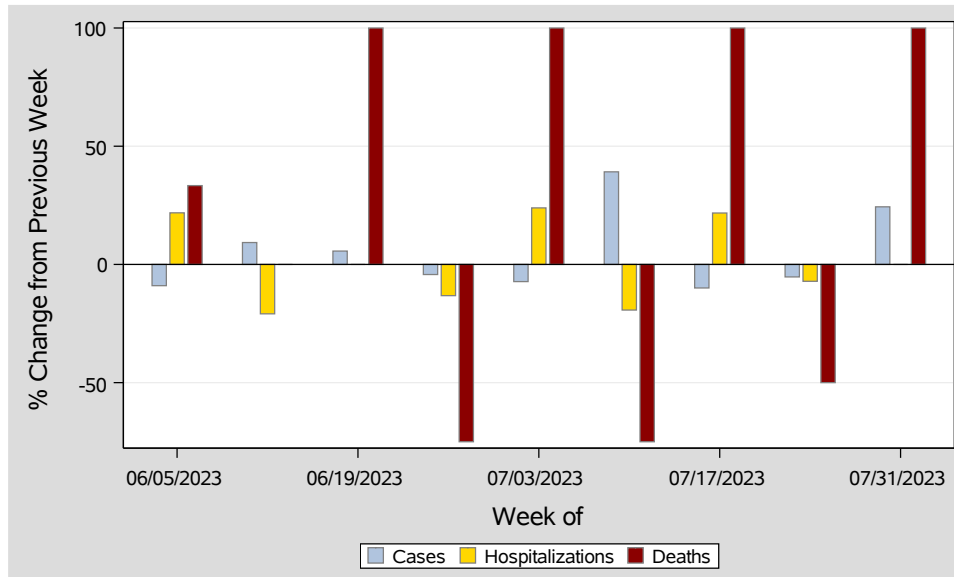


Table 6: Percent Change in Weekly Totals from Previous Week

Week	Case(n)	Cases(%)	Hosp(n)	Hosp(%)	Deaths(n)	Deaths(%)
Jun 05 - Jun 11	162	-9.0	67	21.8	4	33.3
Jun 12 - Jun 18	177	9.3	53	-20.9	4	0.0
Jun 19 - Jun 25	187	5.6	53	0.0	8	100.0
Jun 26 - Jul 02	179	-4.3	46	-13.2	2	-75.0
Jul 03 - Jul 09	166	-7.3	57	23.9	4	100.0
Jul 10 - Jul 16	231	39.2	46	-19.3	1	-75.0
Jul 17 - Jul 23	208	-10.0	56	21.7	2	100.0
Jul 24 - Jul 30	197	-5.3	52	-7.1	1	-50.0
Jul 31 - Aug 06	245	24.4	52	0.0	2	100.0

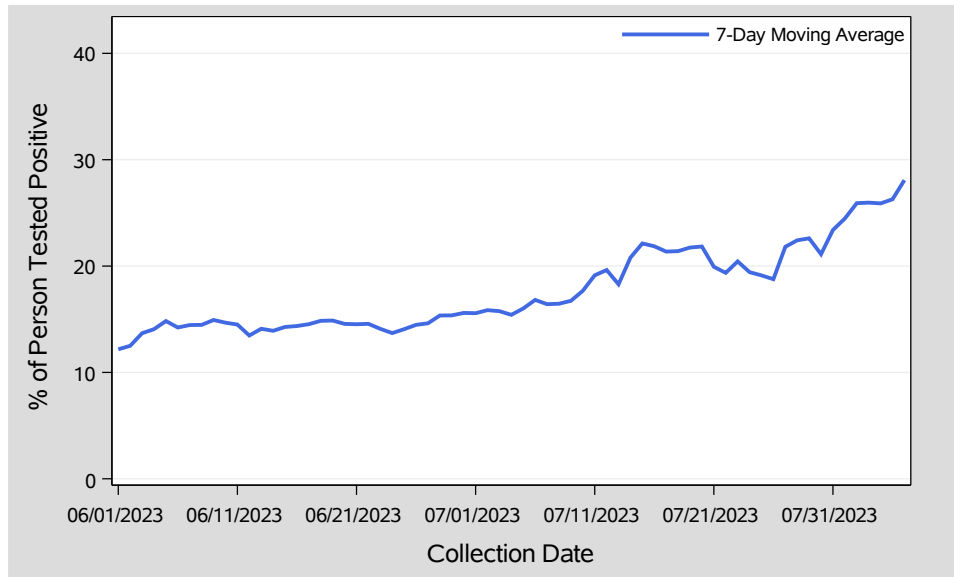


Table 7: Percent of People Receiving COVID-19 PCR Tests Who Have Positive Results

Collection Date	Positive	Negative	Equivocal Unknown	Total	Positive (%)	7-Day Average (%)
Jul 24	38	366	.	404	9.4	19.4
Jul 25	48	195	.	243	19.8	19.1
Jul 26	45	147	.	192	23.4	18.8
Jul 27	64	130	.	194	33.0	21.8
Jul 28	37	131	.	168	22.0	22.4
Jul 29	36	117	.	153	23.5	22.6
Jul 30	25	125	.	150	16.7	21.1
Jul 31	56	165	.	221	25.3	23.4
Aug 01	59	157	.	216	27.3	24.5
Aug 02	56	111	.	167	33.5	25.9
Aug 03	63	126	.	189	33.3	26.0
Aug 04	45	164	.	209	21.5	25.9
Aug 05	43	121	.	164	26.2	26.3
Aug 06	60	145	.	205	29.3	28.1

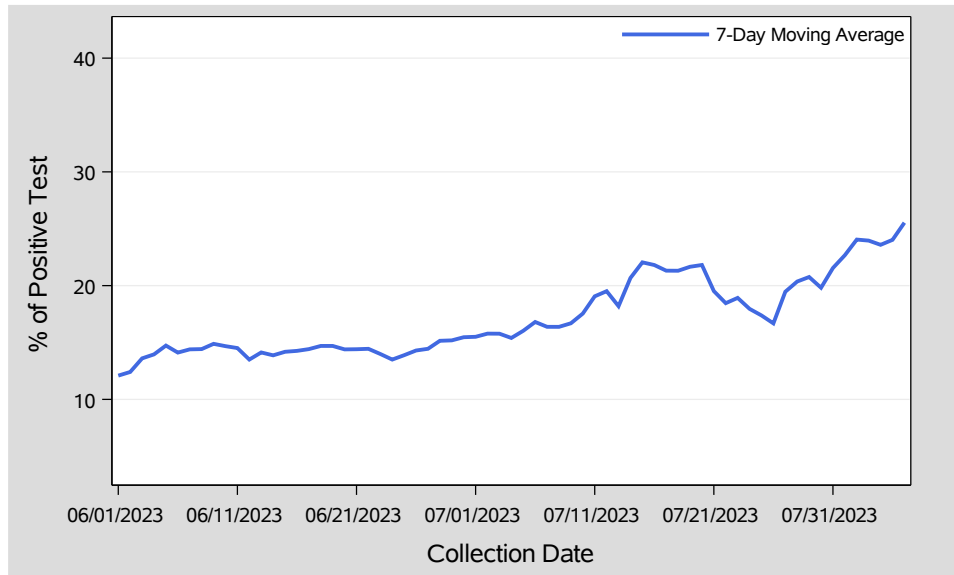


Table 8.1: Percent of Total COVID-19 PCR Tests With Positive Results

Collection Date	Positive	Negative	Equivocal Unknown	Total	Positive (%)	7-Day Average (%)
Jul 24	47	439	.	486	9.7	18.0
Jul 25	60	280	.	340	17.6	17.4
Jul 26	54	204	.	258	20.9	16.7
Jul 27	80	174	.	254	31.5	19.5
Jul 28	49	183	.	232	21.1	20.4
Jul 29	46	169	.	215	21.4	20.8
Jul 30	35	178	.	213	16.4	19.8
Jul 31	67	240	.	307	21.8	21.5
Aug 01	72	210	.	282	25.5	22.7
Aug 02	73	166	.	239	30.5	24.0
Aug 03	79	177	.	256	30.9	24.0
Aug 04	55	242	.	297	18.5	23.6
Aug 05	57	176	.	233	24.5	24.0
Aug 06	78	211	.	289	27.0	25.5

Table 8.2: COVID-19 PCR Test Totals Since Outbreak Start

Positive	Negative	Equivocal Unknown	Total	Positive(%)
834,413	4,843,590	17,437	5,695,440	14.7

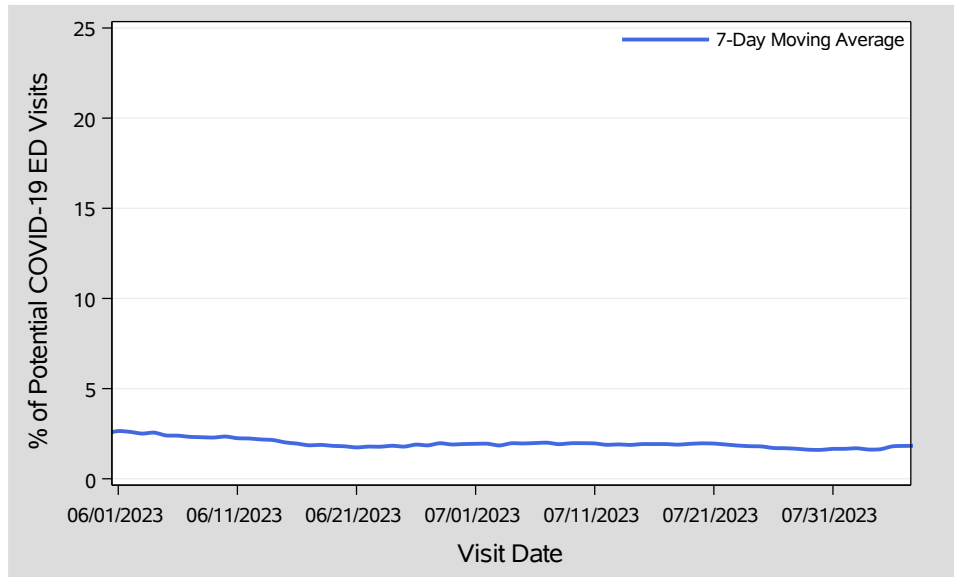


Table 9: Syndromic Surveillance: Percent of ED Visits Potentially Related to COVID-19

Visit Date	Possible COVID Visits	Total ED Visits	(%)	7-Day Average (%)
Jul 24	61	4,380	1.4	1.8
Jul 25	77	4,299	1.8	1.8
Jul 26	53	3,357	1.6	1.7
Jul 27	61	3,136	1.9	1.7
Jul 28	50	3,343	1.5	1.7
Jul 29	38	3,012	1.3	1.6
Jul 30	52	2,957	1.8	1.6
Jul 31	59	3,318	1.8	1.7
Aug 01	60	3,320	1.8	1.7
Aug 02	57	3,164	1.8	1.7
Aug 03	45	3,110	1.4	1.6
Aug 04	51	3,131	1.6	1.6
Aug 05	69	2,893	2.4	1.8
Aug 06	54	2,839	1.9	1.8

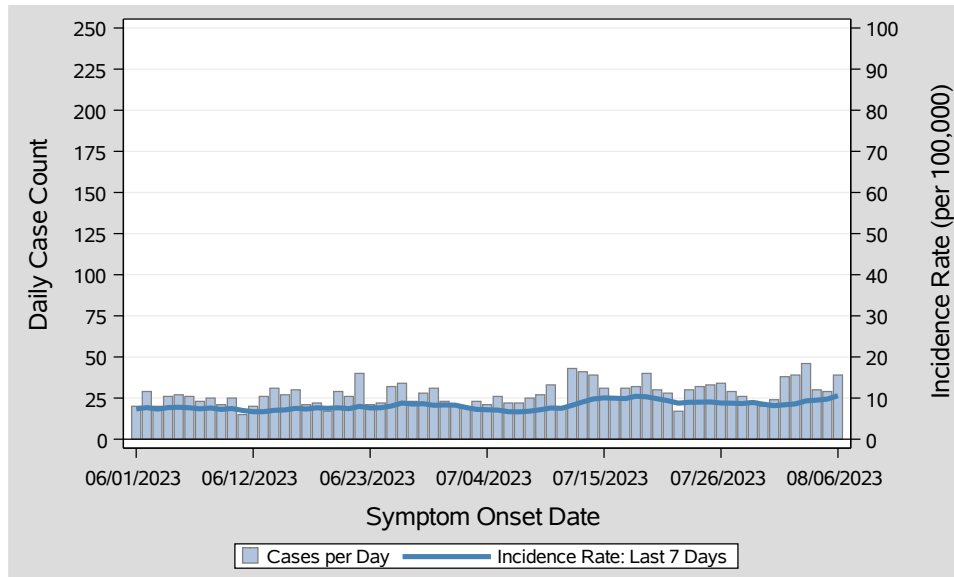


Table 10: COVID-19 Cases per Day and Incidence Rate in the Last 7 Days, Clark County, NV

Onset Date	Cases Per Day	Last 7 Days	
		Total Case Count	Incidence Rate
Jul 24	32	209	9.0
Jul 25	33	210	9.1
Jul 26	34	204	8.8
Jul 27	29	203	8.8
Jul 28	26	201	8.7
Jul 29	23	207	8.9
Jul 30	20	197	8.5
Jul 31	24	189	8.2
Aug 01	38	194	8.4
Aug 02	39	199	8.6
Aug 03	46	216	9.3
Aug 04	30	220	9.5
Aug 05	29	226	9.7
Aug 06	39	245	10.6

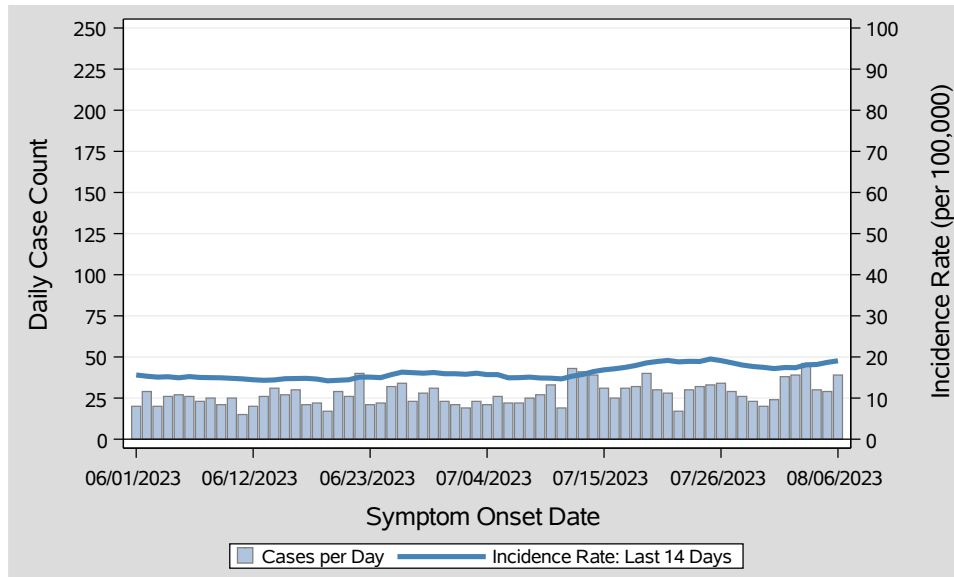


Table 11: COVID-19 Cases per Day and Incidence Rate in the Last 14 Days, Clark County, NV

Onset Date	Cases Per Day	Last 14 Days	
		Total Case Count	Incidence Rate
Jul 24	32	438	18.9
Jul 25	33	452	19.5
Jul 26	34	443	19.1
Jul 27	29	431	18.6
Jul 28	26	418	18.0
Jul 29	23	410	17.7
Jul 30	20	405	17.5
Jul 31	24	398	17.2
Aug 01	38	404	17.4
Aug 02	39	403	17.4
Aug 03	46	419	18.1
Aug 04	30	421	18.2
Aug 05	29	433	18.7
Aug 06	39	442	19.1

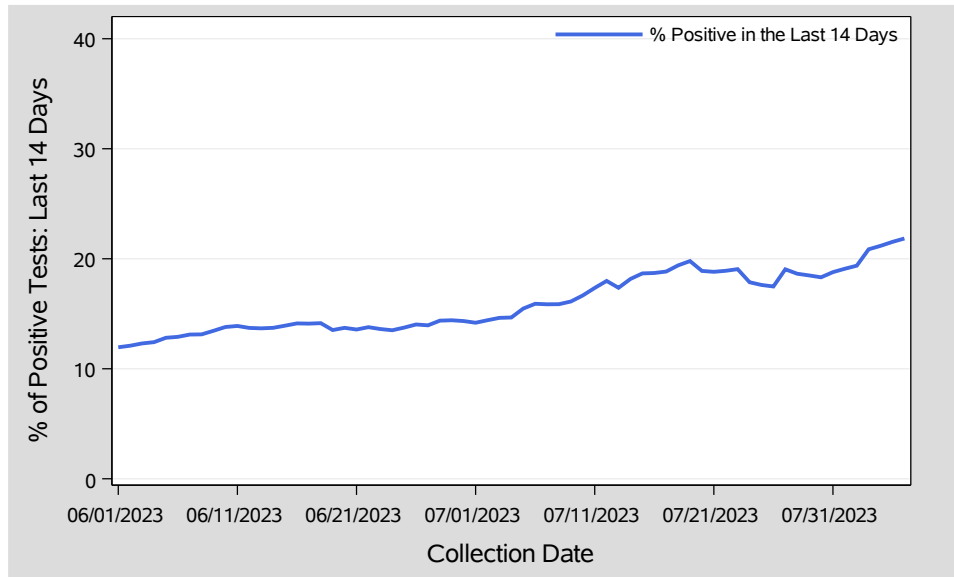


Table 12: Percent of Total COVID-19 PCR Tests With Positive Results in the Last 14 Days, Clark County, NV

Collection Date	Last 14 Days		
	# of Positive Tests	# of Total Tests	% of Positive Tests
Jul 24	717	4,013	17.9
Jul 25	724	4,109	17.6
Jul 26	720	4,119	17.5
Jul 27	756	3,970	19.0
Jul 28	750	4,024	18.6
Jul 29	753	4,074	18.5
Jul 30	750	4,095	18.3
Jul 31	748	3,982	18.8
Aug 01	771	4,038	19.1
Aug 02	782	4,037	19.4
Aug 03	814	3,902	20.9
Aug 04	822	3,882	21.2
Aug 05	833	3,868	21.5
Aug 06	852	3,901	21.8

Report prepared by: Ying Zhang, PhD, MPH (Office of Epidemiology) and Lei Zhang, MS (Office of Informatics)