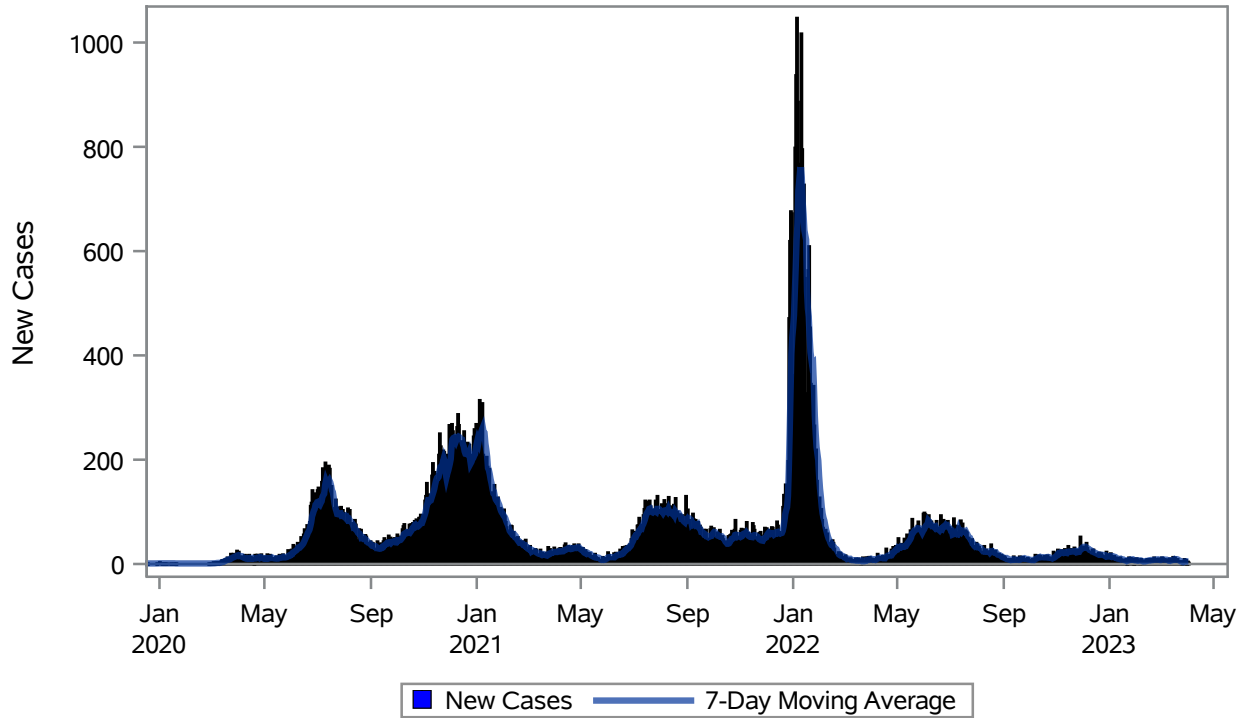


### COVID19 Cases for North Las Vegas, 7-Day Moving Average



Investigations are ongoing; data are subject to change.

Reporting through 03APR2023

North Las Vegas zip codes include 89030, 89031, 89032, 89033, 89036, 89081, 89084, 89085, 89086, 89087.

**Table 1: New COVID19 Cases and 7-Day Moving Average in North Las Vegas, Previous Two Weeks**

Date (Daily)	New Cases	7-Day Moving Average
21MAR2023	3	8.43
22MAR2023	4	7.14
23MAR2023	5	6.43
24MAR2023	3	5.14
25MAR2023	2	4.86
26MAR2023	2	4.00
27MAR2023	5	3.43
28MAR2023	9	4.29
29MAR2023	7	4.71
30MAR2023	7	5.00
31MAR2023	1	4.71
01APR2023	4	5.00

---

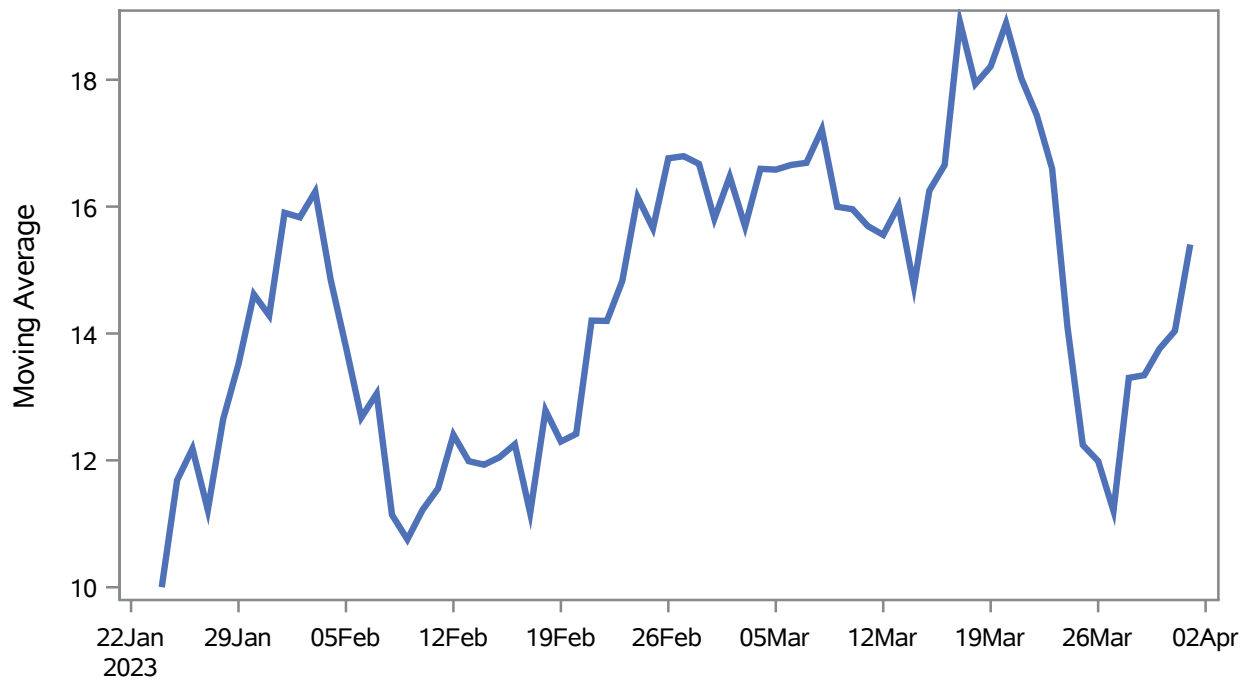
Note1: Event Date is calculated as follows based on completed information:  
1) Disease onset date 2) Disease diagnosis date 3) Lab result collection date 4) Report date to SNHD.

---

**Investigations are ongoing; data are subject to change.  
Reporting through 03APR2023**

**North Las Vegas zip codes include 89030, 89031, 89032, 89033, 89036, 89081, 89084, 89085, 89086, 89087.**

### Percent of People Receiving COVID-19 Viral Tests Who Have Positive Results in North Las Vegas



Investigations are ongoing; data are subject to change.

Reporting through 03APR2023

North Las Vegas zip codes include 89030, 89031, 89032, 89033, 89036, 89081, 89084, 89085, 89086, 89087.

**Table 2: Percent of People Receiving COVID-19 Viral Tests Who Have Positive Results in North Las Vegas**

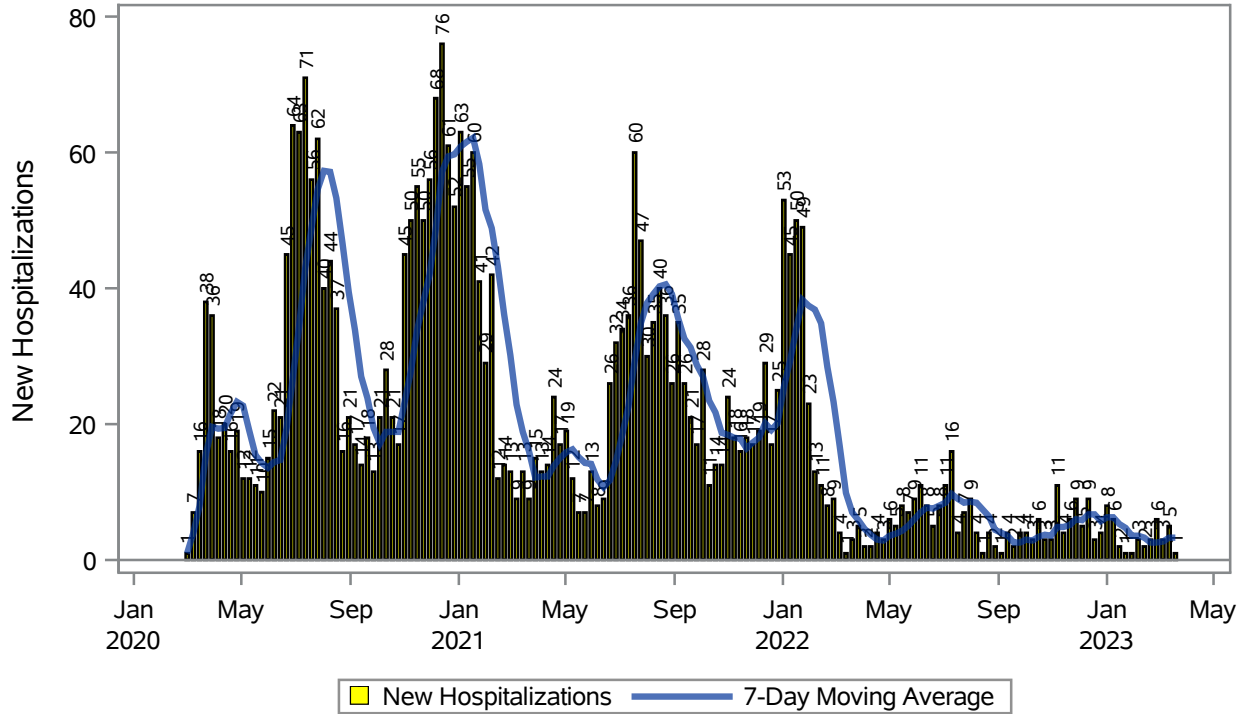
Collection Date	Positive	Negative	Equivocal	Total	% Positivity	7-Day Moving Average
18MAR2023	9	43		52	17.31	17.9
19MAR2023	14	57		71	19.72	18.2
20MAR2023	17	79		96	17.71	18.9
21MAR2023	7	133		140	5.00	18.0
22MAR2023	13	49		62	20.97	17.4
23MAR2023	9	61		70	12.86	16.6
24MAR2023	7	128		135	5.19	14.1
25MAR2023	2	45		47	4.26	12.2
26MAR2023	7	32		39	17.95	12.0
27MAR2023	11	79		90	12.22	11.2
28MAR2023	12	49		61	19.67	13.3
29MAR2023	17	63		80	21.25	13.3
30MAR2023	9	48		57	15.79	13.8
31MAR2023	4	52		56	7.14	14.0
01APR2023	4	25		29	13.79	15.4

Note: Testing Data includes a 3 day delay

**Investigations are ongoing; data are subject to change.  
Reporting through 03APR2023**

**North Las Vegas zip codes include 89030, 89031, 89032, 89033, 89036, 89081, 89084, 89085, 89086, 89087.**

### COVID19 Hospitalizations for North Las Vegas, 7-Day Moving Average



Investigations are ongoing; data are subject to change.

Reporting through 03APR2023

North Las Vegas zip codes include 89030, 89031, 89032, 89033, 89036, 89081, 89084, 89085, 89086, 89087.

**Table 3: New COVID19-Related Hospitalizations and 7-Day Moving Average in North Las Vegas, previous month**

Week	Hospitalizations	7-Day Moving Average
05MAR2023	3	2.71
12MAR2023	5	3.29
19MAR2023	1	3.29

---

Note1: Admission Date is calculated as follows based on completed information:  
A) COVID19 Case is hospitalized B) COVID19 Case has a hospital admission date.

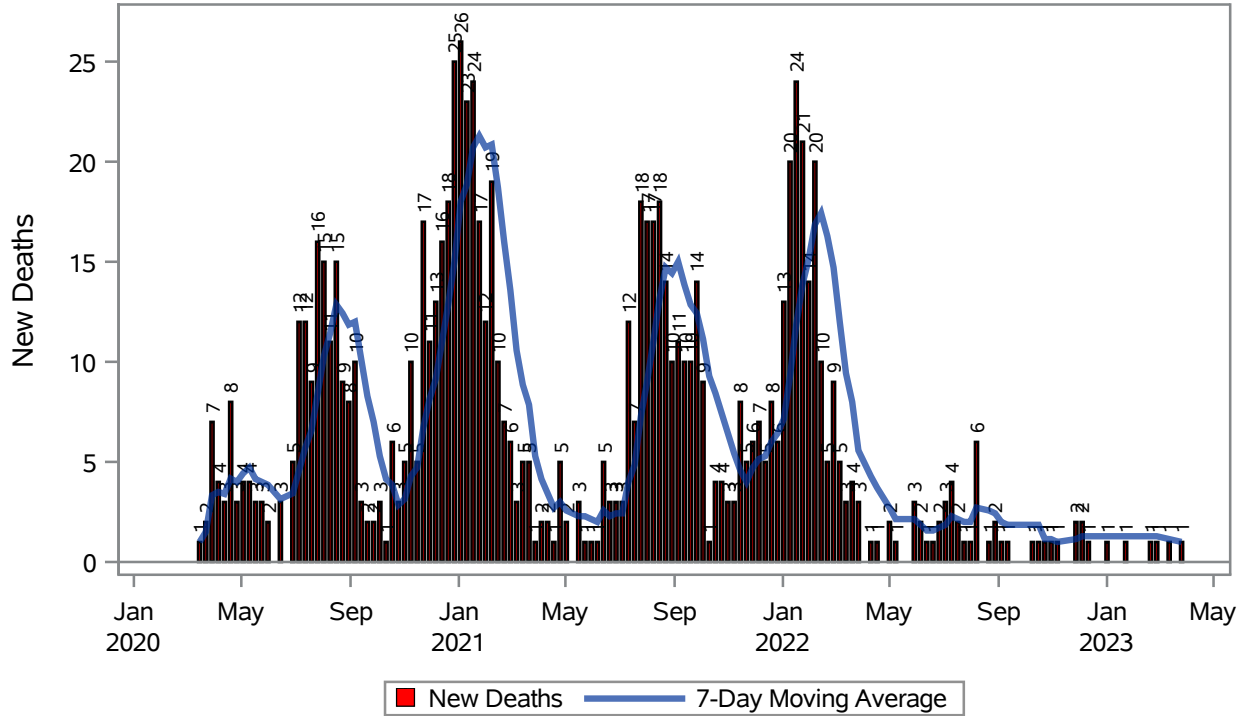
If admission date is missing, then the following is substituted temporarily, in order:  
1) Disease onset date 2) Disease diagnosis date 3) Lab result collection date 4) Report date to SNHD.

---

**Investigations are ongoing; data are subject to change.  
Reporting through 03APR2023**

**North Las Vegas zip codes include 89030, 89031, 89032, 89033, 89036, 89081, 89084, 89085, 89086, 89087.**

### COVID19 Deaths for North Las Vegas, 7-Day Moving Average



Investigations are ongoing; data are subject to change.  
Reporting through 03APR2023

North Las Vegas zip codes include 89030, 89031, 89032, 89033, 89036, 89081, 89084, 89085, 89086, 89087.

**Table 4: New COVID19-Related Deaths and 7-Day Moving Average in North Las Vegas, Previous Month**

Week	Deaths	7-Day Moving Average
12MAR2023	1	1.14
26MAR2023	1	1.00

---

Note1: Date of Death is calculated as follows based on completed information:  
A) COVID19 Case is reported as deceased B) COVID19 Case has a reported date of death.

If date of death is missing, then the following is substituted temporarily, in order:  
1) Disease onset date 2) Disease diagnosis date  
3) Lab result collection date 4) Report date to SNHD.

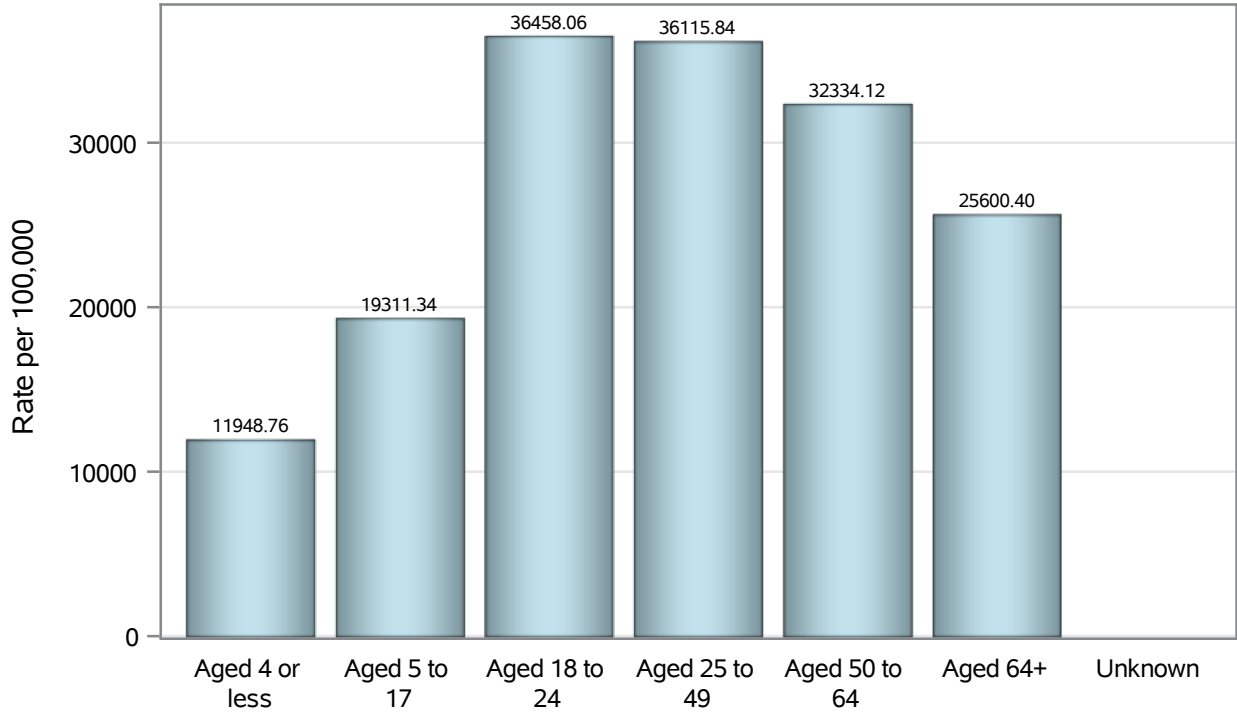
---

**Investigations are ongoing; data are subject to change.  
Reporting through 03APR2023**

**North Las Vegas zip codes include 89030, 89031, 89032, 89033, 89036, 89081, 89084, 89085, 89086, 89087.**



### Case Age Rates in North Las Vegas

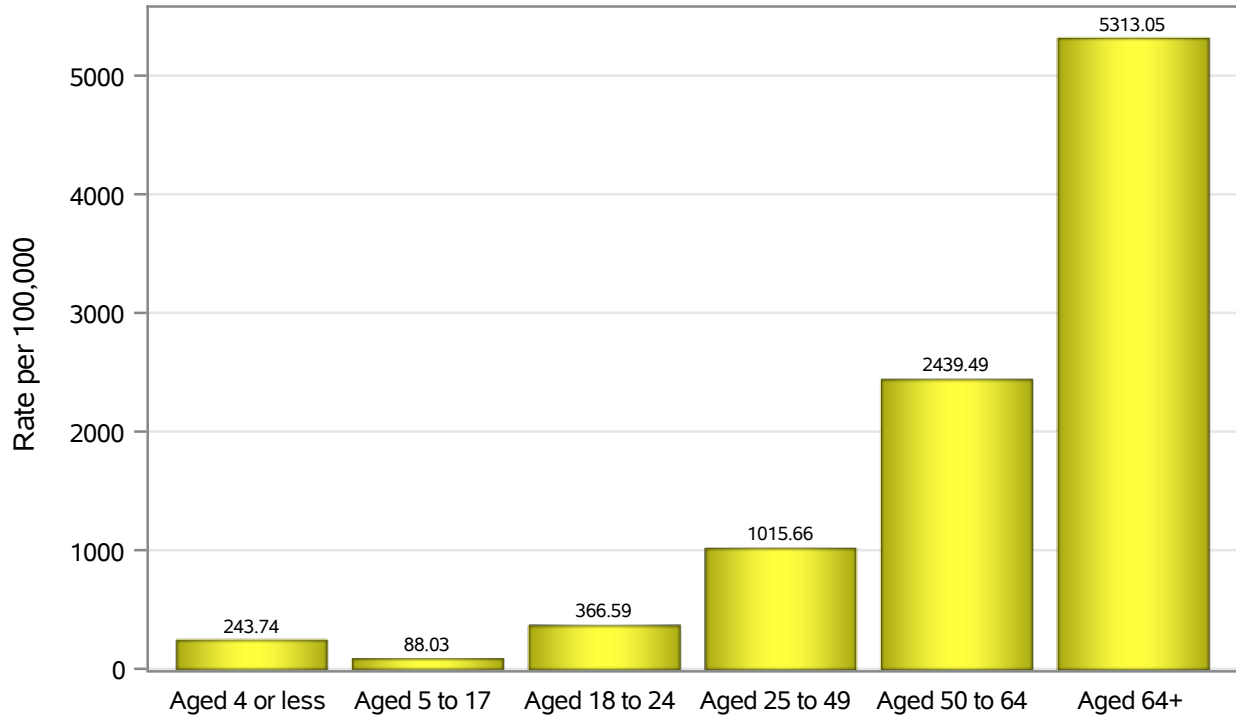


Investigations are ongoing; data are subject to change.

Reporting through 03APR2023

North Las Vegas zip codes include 89030, 89031, 89032, 89033, 89036, 89081, 89084, 89085, 89086, 89087.

### Hospitalization Age Rates in North Las Vegas

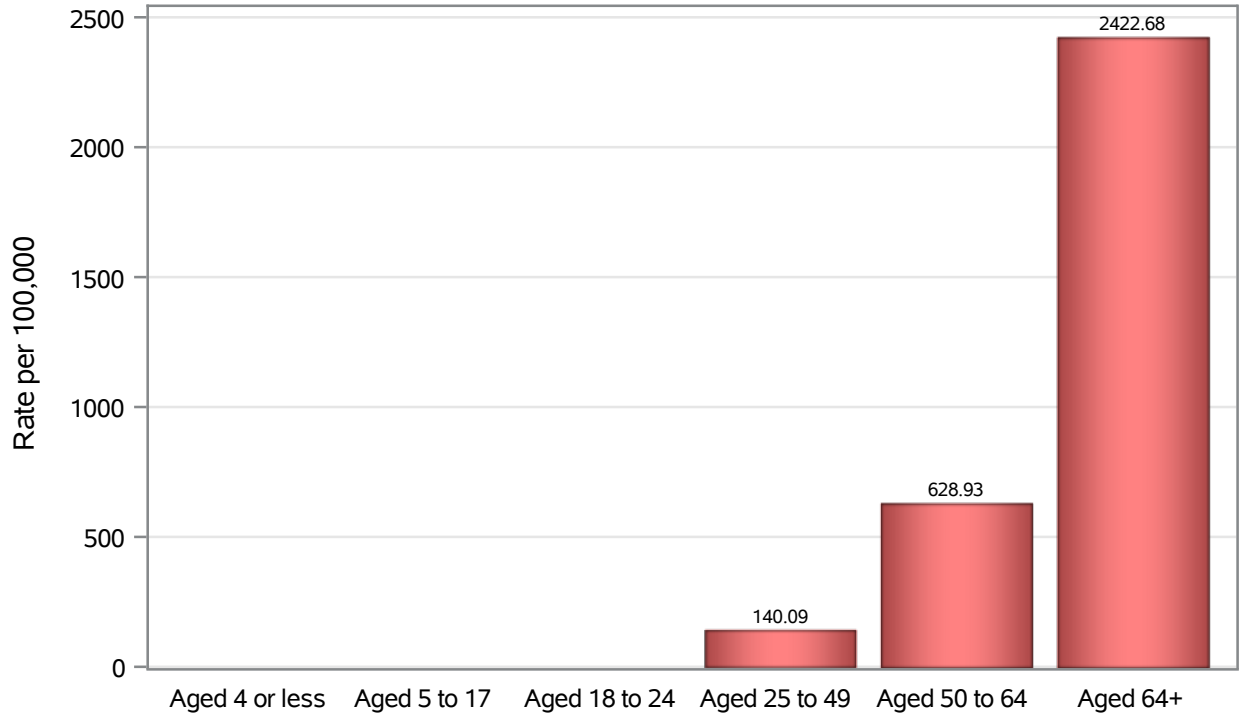


Investigations are ongoing; data are subject to change.

Reporting through 03APR2023

North Las Vegas zip codes include 89030, 89031, 89032, 89033, 89036, 89081, 89084, 89085, 89086, 89087.

### Death Age Rates in North Las Vegas



Investigations are ongoing; data are subject to change.

Reporting through 03APR2023

North Las Vegas zip codes include 89030, 89031, 89032, 89033, 89036, 89081, 89084, 89085, 89086, 89087.

**Table 5: Age and COVID19 in North Las Vegas**

Case Status	Age Categories	N	%	Population	Rate per 100,000
Cases	Aged 4 or less	2108	3.1	17,642	11949
	Aged 5 to 17	9652	14.2	49,981	19311
	Aged 18 to 24	8354	12.3	22,914	36458
	Aged 25 to 49	29905	44.0	82,803	36116
	Aged 50 to 64	11876	17.5	36,729	32334
	Aged 64+	6076	8.9	23,734	25600
	Unknown	15	0.0	.	.
Hospitalizations	Aged 4 or less	43	1.4	17,642	243.74
	Aged 5 to 17	44	1.4	49,981	88.03
	Aged 18 to 24	84	2.7	22,914	366.59
	Aged 25 to 49	841	26.5	82,803	1015.7
	Aged 50 to 64	896	28.3	36,729	2439.5
	Aged 64+	1261	39.8	23,734	5313.1
	Deaths	Aged 4 or less	3	0.3	17,642
Aged 5 to 17		1	0.1	49,981	.
Aged 18 to 24		2	0.2	22,914	.
Aged 25 to 49		116	12.5	82,803	140.09
Aged 50 to 64		231	24.9	36,729	628.93
Aged 64+		575	62.0	23,734	2422.7

Note1: Population data source for calculating rate estimates: U.S. Census Bureau, ACS 5-year estimate.

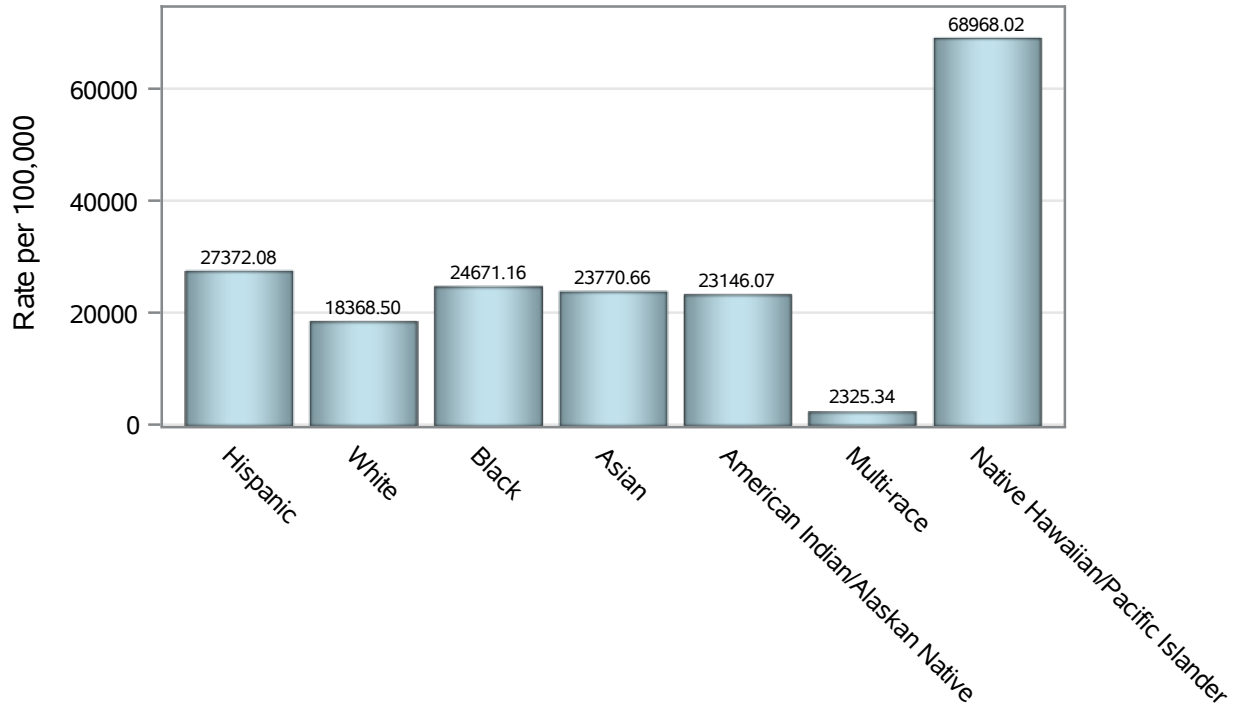
Note2: Rates for categories with fewer than 12 cases are suppressed due to high relative standard error.

Note3: Hospitalizations are regardless of deceased status; Deaths are regardless of hospitalization status

**Investigations are ongoing; data are subject to change.  
Reporting through 03APR2023**

**North Las Vegas zip codes include 89030, 89031, 89032, 89033, 89036, 89081, 89084, 89085, 89086, 89087.**

### Case Race/Ethnicity Rates in North Las Vegas

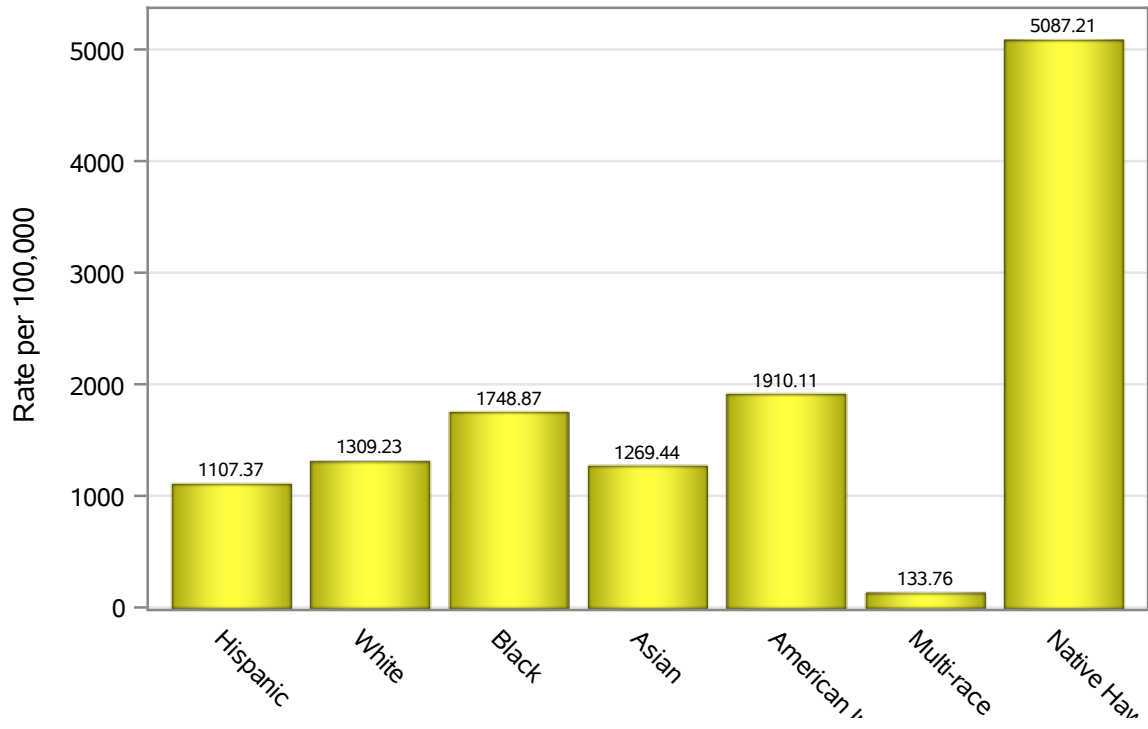


Investigations are ongoing; data are subject to change.

Reporting through 03APR2023

North Las Vegas zip codes include 89030, 89031, 89032, 89033, 89036, 89081, 89084, 89085, 89086, 89087.

### Hospitalization Race/Ethnicity Rates in North Las Vegas

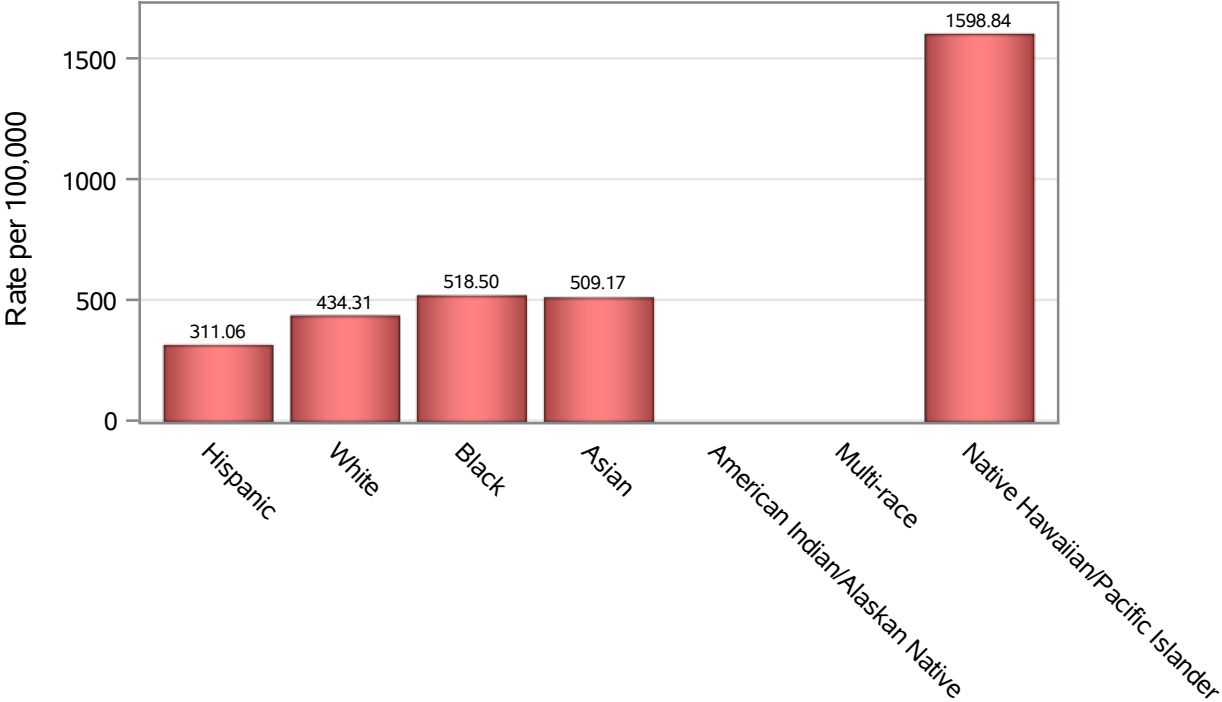


Investigations are ongoing; data are subject to change.

Reporting through 03APR2023

North Las Vegas zip codes include 89030, 89031, 89032, 89033, 89036, 89081, 89084, 89085, 89086, 89087.

### Death Race/Ethnicity Rates in North Las Vegas



Investigations are ongoing; data are subject to change.

Reporting through 03APR2023

North Las Vegas zip codes include 89030, 89031, 89032, 89033, 89036, 89081, 89084, 89085, 89086, 89087.

**Table 6: Race/Ethnicity and COVID19 in North Las Vegas**

Case Status	Race Ethnicity Categories	N	%	Population	Rate per 100,000
Cases	Hispanic	26399	38.8	96,445	27372
	White	11673	17.2	63,549	18369
	Black	11610	17.1	47,059	24671
	Asian	3408	5.0	14,337	23771
	American Indian/Alaskan Native	206	0.3	890	23146
	Multi-race	226	0.3	9,719	2325.3
	Native Hawaiian/Pacific Islander	949	1.4	1,376	68968
	Unknown	13515	19.9	.	.
Hospitalizations	Hispanic	1068	33.7	96,445	1107.4
	White	832	26.3	63,549	1309.2
	Black	823	26.0	47,059	1748.9
	Asian	182	5.7	14,337	1269.4
	American Indian/Alaskan Native	17	0.5	890	1910.1
	Multi-race	13	0.4	9,719	133.76
	Native Hawaiian/Pacific Islander	70	2.2	1,376	5087.2
	Unknown	164	5.2	.	.
Deaths	Hispanic	300	32.3	96,445	311.06
	White	276	29.7	63,549	434.31
	Black	244	26.3	47,059	518.50
	Asian	73	7.9	14,337	509.17
	American Indian/Alaskan Native	6	0.6	890	.
	Multi-race	7	0.8	9,719	.
	Native Hawaiian/Pacific Islander	22	2.4	1,376	1598.8

Note1: Population data source for calculating rate estimates: U.S. Census Bureau, ACS 5-year estimate.

Note2: Rates for categories with fewer than 12 cases are suppressed due to high relative standard error.

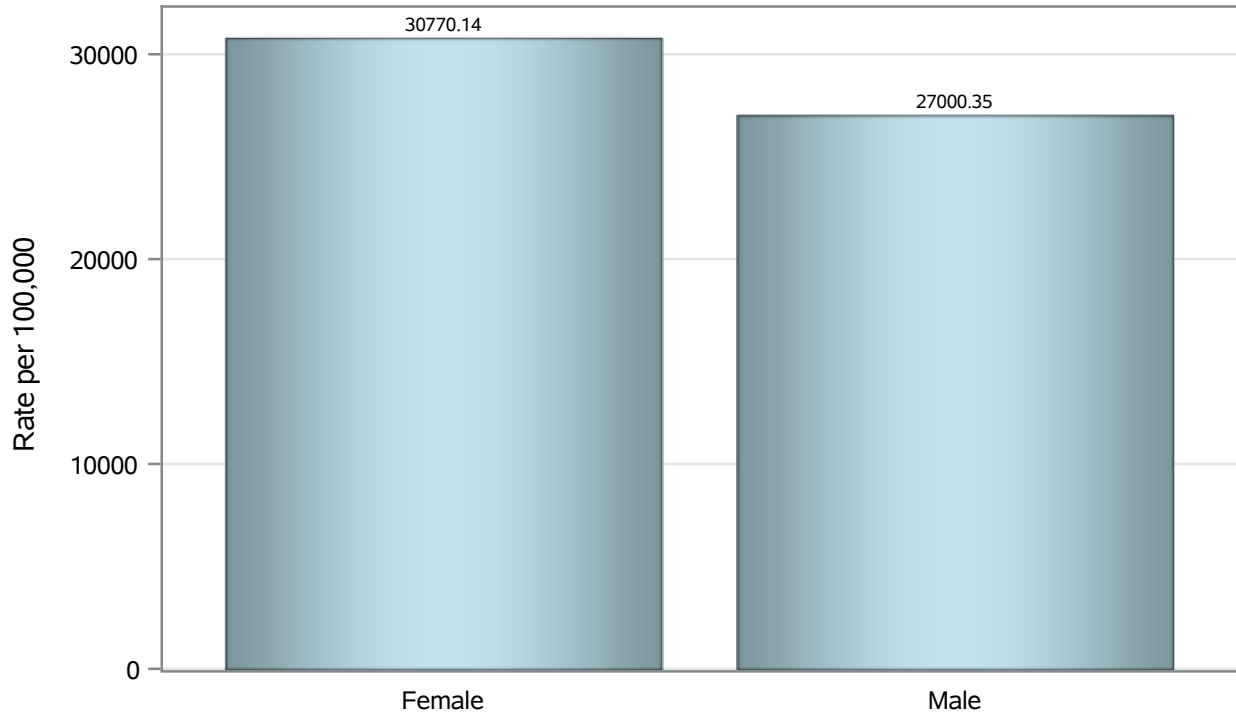
Note3: Hospitalizations are regardless of deceased status; Deaths are regardless of hospitalization status

**Investigations are ongoing; data are subject to change.  
Reporting through 03APR2023**

**North Las Vegas zip codes include 89030, 89031, 89032, 89033, 89036, 89081, 89084, 89085, 89086, 89087.**



### Case Birth Sex Rates in North Las Vegas

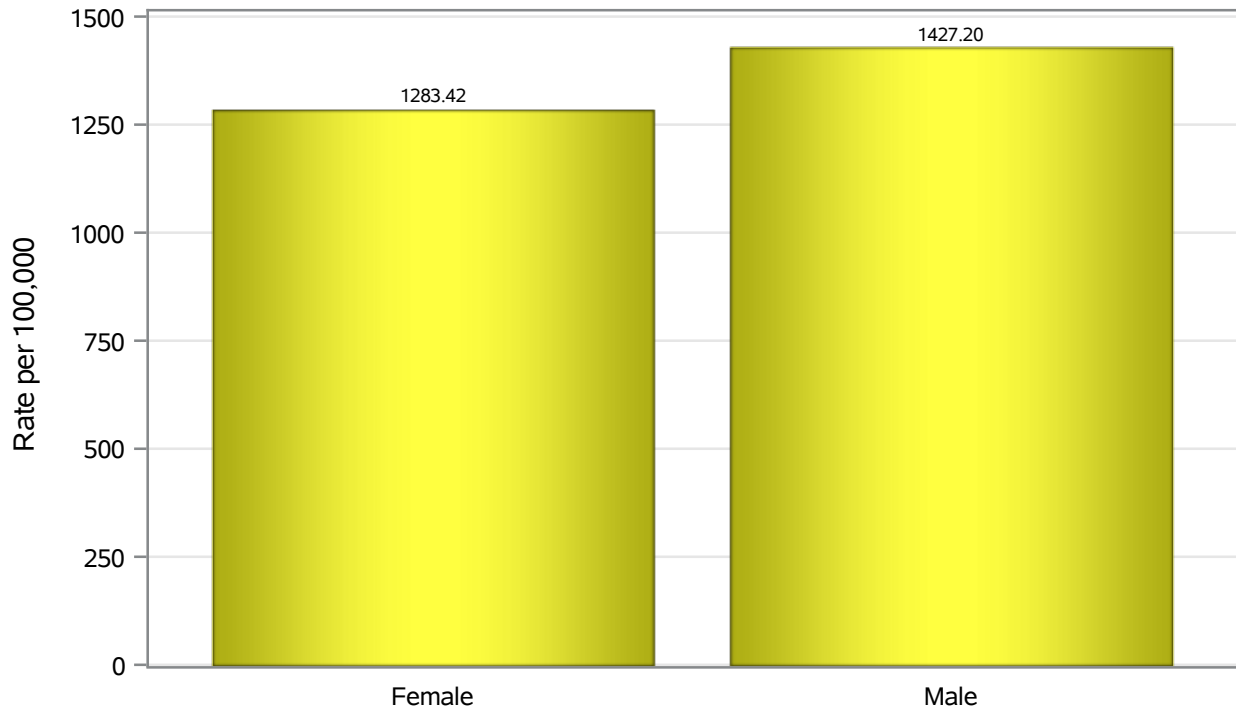


Investigations are ongoing; data are subject to change.

Reporting through 03APR2023

North Las Vegas zip codes include 89030, 89031, 89032, 89033, 89036, 89081, 89084, 89085, 89086, 89087.

### Hospitalization Birth Sex Rates in North Las Vegas

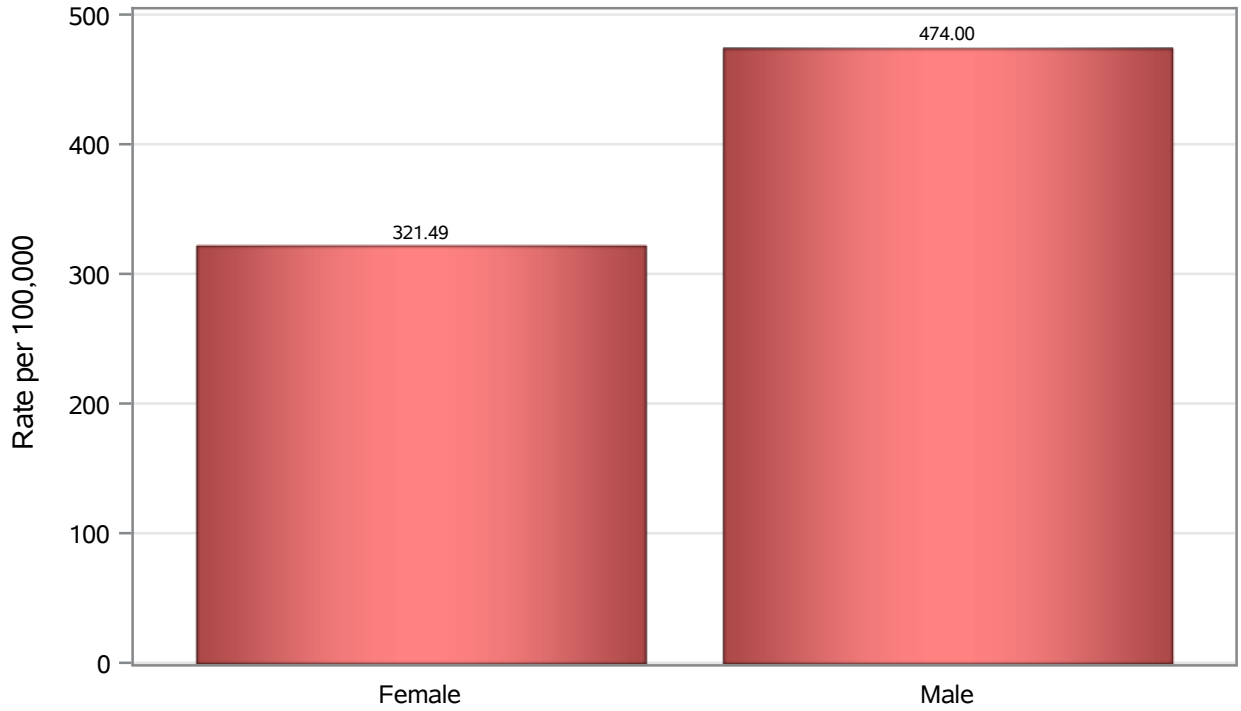


Investigations are ongoing; data are subject to change.

Reporting through 03APR2023

North Las Vegas zip codes include 89030, 89031, 89032, 89033, 89036, 89081, 89084, 89085, 89086, 89087.

### Death Birth Sex Rates in North Las Vegas



Investigations are ongoing; data are subject to change.

Reporting through 03APR2023

North Las Vegas zip codes include 89030, 89031, 89032, 89033, 89036, 89081, 89084, 89085, 89086, 89087.

**Table 7: Birth Sex and COVID19 in North Las Vegas**

Case Status	Birth Sex Categories	N	%	Population	Rate per 100,000
Cases	Female	36562	53.8	118823	30770
	Male	31045	45.7	114980	27000
	Unknown	379	0.6	.	.
Hospitalizations	Female	1525	48.1	118823	1283.4
	Male	1641	51.8	114980	1427.2
	Unknown	3	0.1	.	.
Deaths	Female	382	41.2	118823	321.49
	Male	545	58.7	114980	474.00
	Unknown	1	0.1	.	.

Note1: Population data source for calculating rate estimates: U.S. Census Bureau, ACS 5-year estimate.

Note2: Rates for categories with fewer than 12 cases are suppressed due to high relative standard error.

Note3: Hospitalizations are regardless of deceased status; Deaths are regardless of hospitalization status

**Investigations are ongoing; data are subject to change.  
Reporting through 03APR2023**

**North Las Vegas zip codes include 89030, 89031, 89032, 89033, 89036, 89081, 89084, 89085, 89086, 89087.**