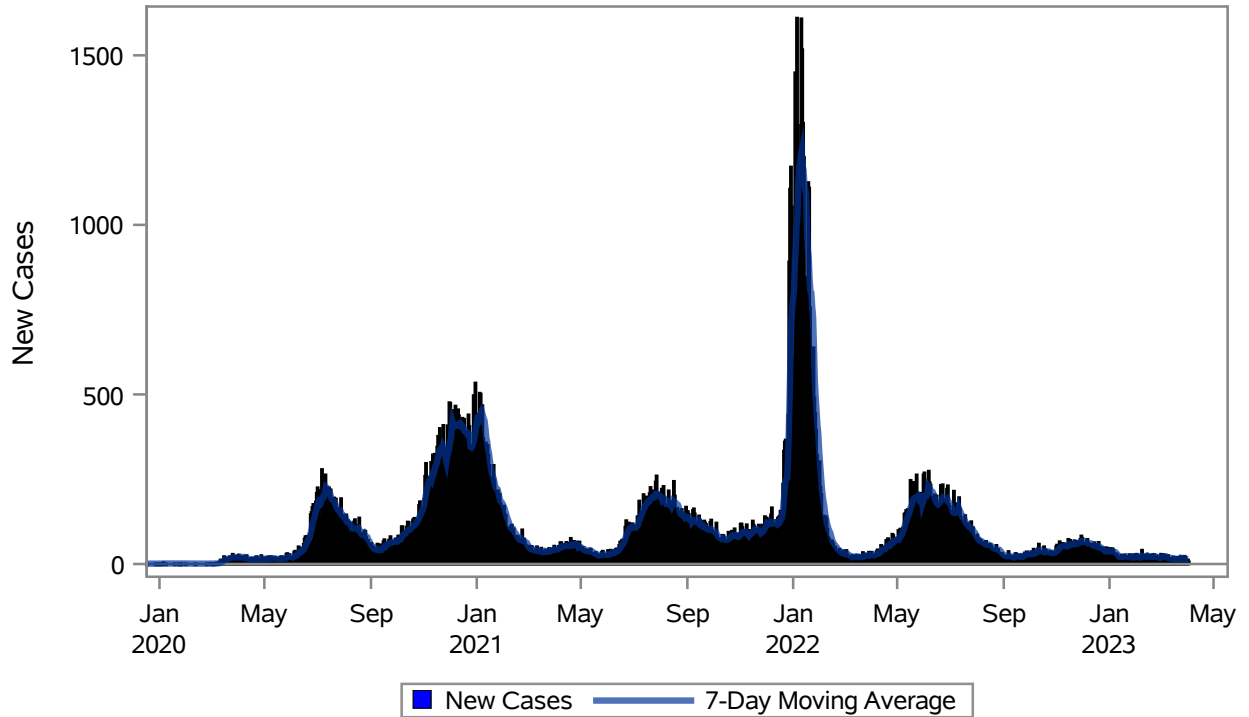


COVID19 Cases for Henderson, 7-Day Moving Average



Investigations are ongoing; data are subject to change.

Reporting through 03APR2023

Henderson zip codes include 89002, 89011, 89012, 89014, 89015, 89044, 89052, 89074, 89119, 89120, 89122, 89123, 89124, 89183.

Table 1: New COVID19 Cases and 7-Day Moving Average in Henderson, Previous Two Weeks

Date (Daily)	New Cases	7-Day Moving Average
21MAR2023	18	15.14
22MAR2023	19	15.00
23MAR2023	18	15.14
24MAR2023	22	17.71
25MAR2023	8	16.29
26MAR2023	5	15.57
27MAR2023	18	15.43
28MAR2023	23	16.14
29MAR2023	20	16.29
30MAR2023	12	15.43
31MAR2023	9	13.57
01APR2023	12	14.14

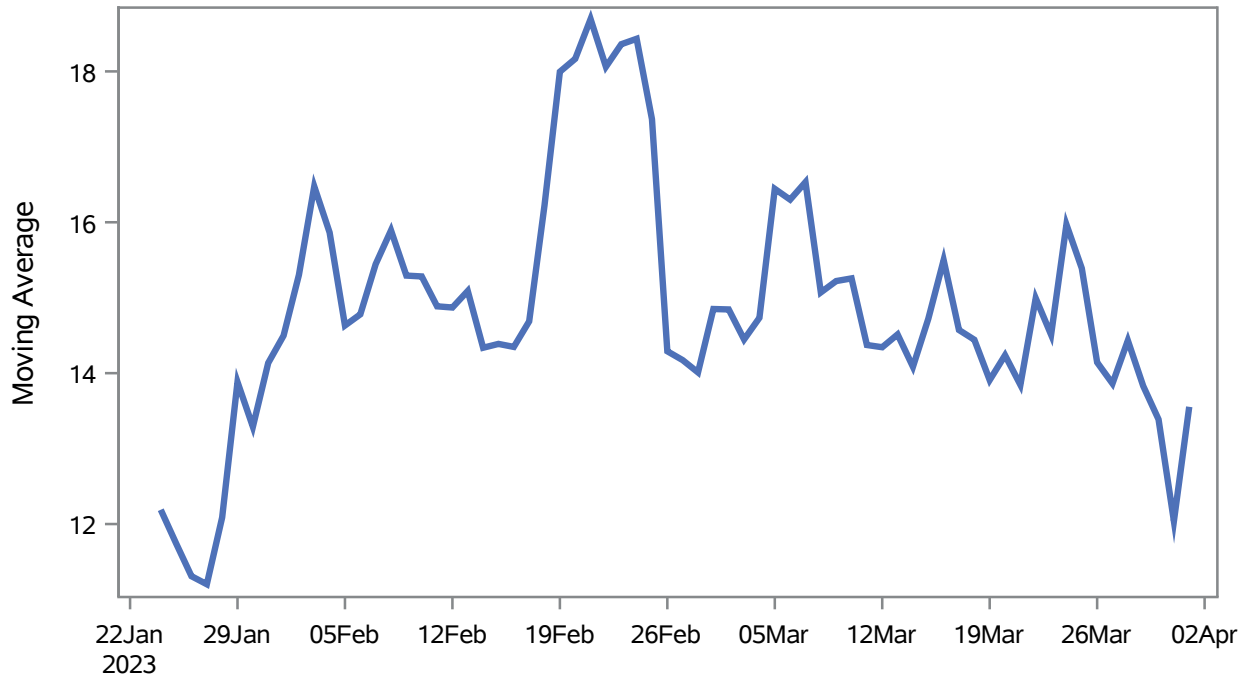
Note1: Event Date is calculated as follows based on completed information:
1) Disease onset date 2) Disease diagnosis date 3) Lab result collection date 4) Report date to SNHD.

Investigations are ongoing; data are subject to change.

Reporting through 03APR2023

Henderson zip codes include 89002, 89011, 89012, 89014, 89015, 89044, 89052, 89074, 89119, 89120, 89122, 89123, 89124, 89183.

Percent of People Receiving COVID-19 Viral Tests Who Have Positive Results in Henderson



Investigations are ongoing; data are subject to change.

Reporting through 03APR2023

Henderson zip codes include 89002, 89011, 89012, 89014, 89015, 89044, 89052, 89074, 89119, 89120, 89122, 89123, 89124, 89183.

Table 2: Percent of People Receiving COVID-19 Viral Tests Who Have Positive Results in Henderson

Collection Date	Positive	Negative	Equivocal	Total	% Positivity	7-Day Moving Average
18MAR2023	8	72	1	81	9.88	14.4
19MAR2023	13	76		89	14.61	13.9
20MAR2023	25	124		149	16.78	14.2
21MAR2023	15	100		115	13.04	13.8
22MAR2023	26	100		126	20.63	15.0
23MAR2023	24	122		146	16.44	14.5
24MAR2023	30	117		147	20.41	16.0
25MAR2023	5	81		86	5.81	15.4
26MAR2023	5	80		85	5.88	14.1
27MAR2023	20	115		135	14.81	13.9
28MAR2023	23	112		135	17.04	14.4
29MAR2023	22	112		134	16.42	13.8
30MAR2023	14	91		105	13.33	13.4
31MAR2023	9	73		82	10.98	12.0
01APR2023	11	56		67	16.42	13.6

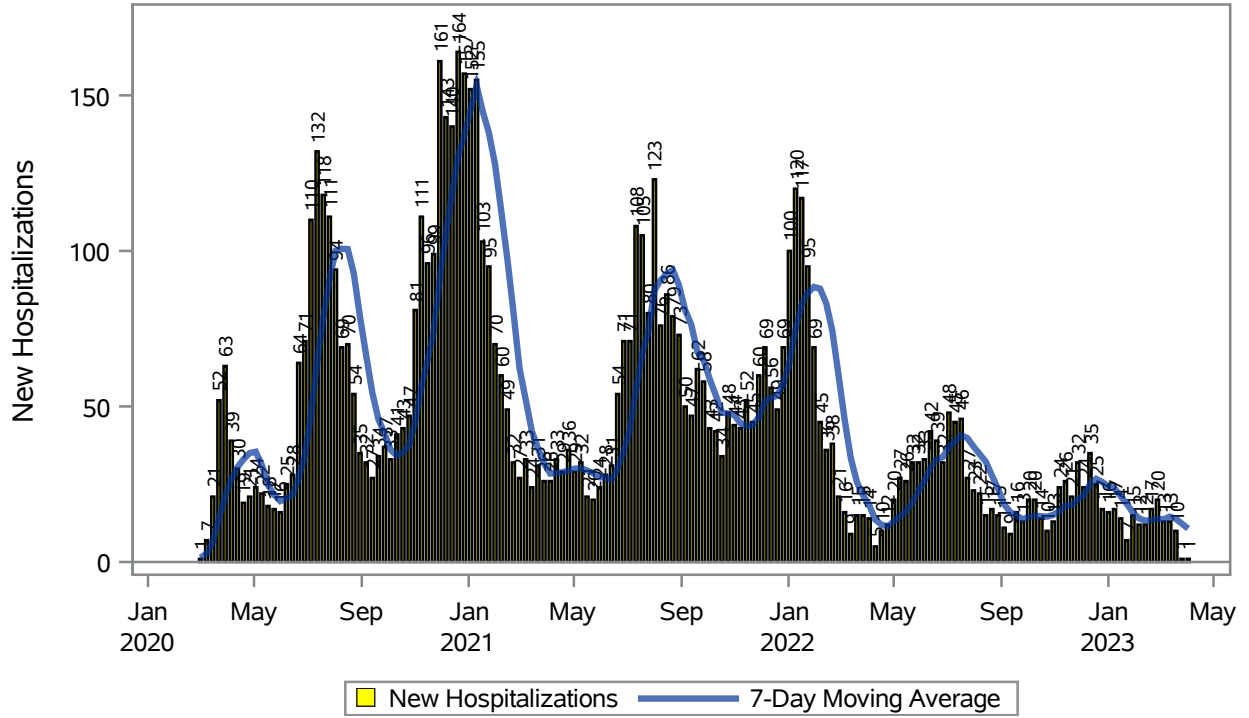
Note: Testing Data includes a 3 day delay

Investigations are ongoing; data are subject to change.

Reporting through 03APR2023

Henderson zip codes include 89002, 89011, 89012, 89014, 89015, 89044, 89052, 89074, 89119, 89120, 89122, 89123, 89124, 89183.

COVID19 Hospitalizations for Henderson, 7-Day Moving Average



Investigations are ongoing; data are subject to change.

Reporting through 03APR2023

Henderson zip codes include 89002, 89011, 89012, 89014, 89015, 89044, 89052, 89074, 89119, 89120, 89122, 89123, 89124, 89183.

Table 3: New COVID19-Related Hospitalizations and 7-Day Moving Average in Henderson, previous month

Week	Hospitalizations	7-Day Moving Average
05MAR2023	13	13.7
12MAR2023	13	14.6
19MAR2023	10	13.9
26MAR2023	1	12.3
02APR2023	1	10.7

Note1: Admission Date is calculated as follows based on completed information:
A) COVID19 Case is hospitalized B) COVID19 Case has a hospital admission date.

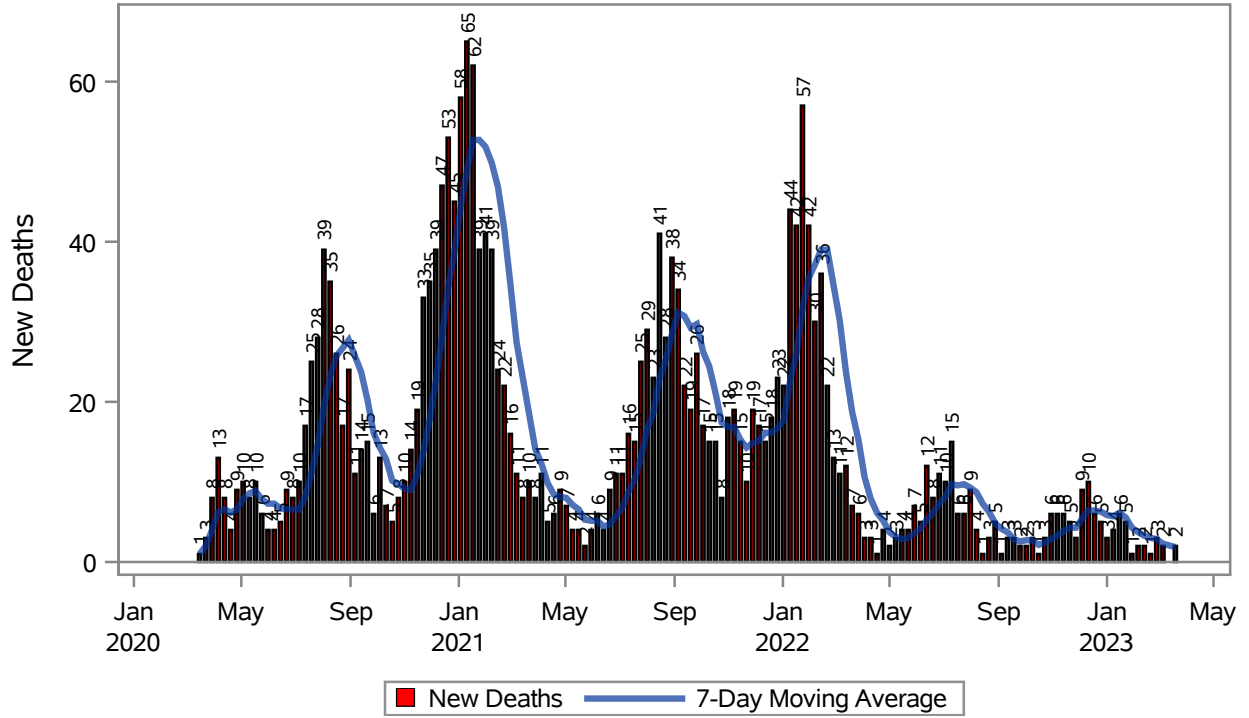
If admission date is missing, then the following is substituted temporarily, in order:
1) Disease onset date 2) Disease diagnosis date 3) Lab result collection date 4) Report date to SNHD.

Investigations are ongoing; data are subject to change.

Reporting through 03APR2023

Henderson zip codes include 89002, 89011, 89012, 89014, 89015, 89044, 89052, 89074, 89119, 89120, 89122, 89123, 89124, 89183.

COVID19 Deaths for Henderson, 7-Day Moving Average



Investigations are ongoing; data are subject to change.

Reporting through 03APR2023

Henderson zip codes include 89002, 89011, 89012, 89014, 89015, 89044, 89052, 89074, 89119, 89120, 89122, 89123, 89124, 89183.

Table 4: New COVID19-Related Deaths and 7-Day Moving Average in Henderson, Previous Month

Week	Deaths	7-Day Moving Average
05MAR2023	2	2.29
19MAR2023	2	1.86

Note1: Date of Death is calculated as follows based on completed information:
A) COVID19 Case is reported as deceased B) COVID19 Case has a reported date of death.

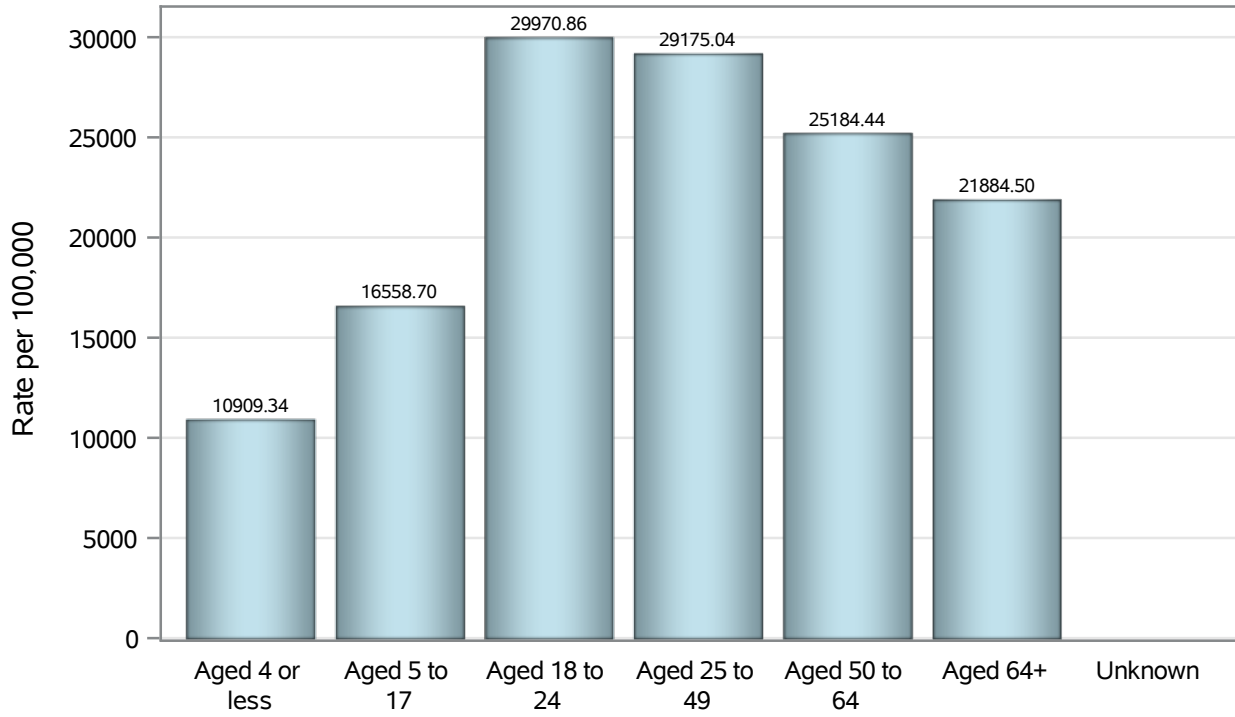
If date of death is missing, then the following is substituted temporarily, in order:
1) Disease onset date 2) Disease diagnosis date
3) Lab result collection date 4) Report date to SNHD.

Investigations are ongoing; data are subject to change.

Reporting through 03APR2023

Henderson zip codes include 89002, 89011, 89012, 89014, 89015, 89044, 89052, 89074, 89119, 89120, 89122, 89123, 89124, 89183.

Case Age Rates in Henderson

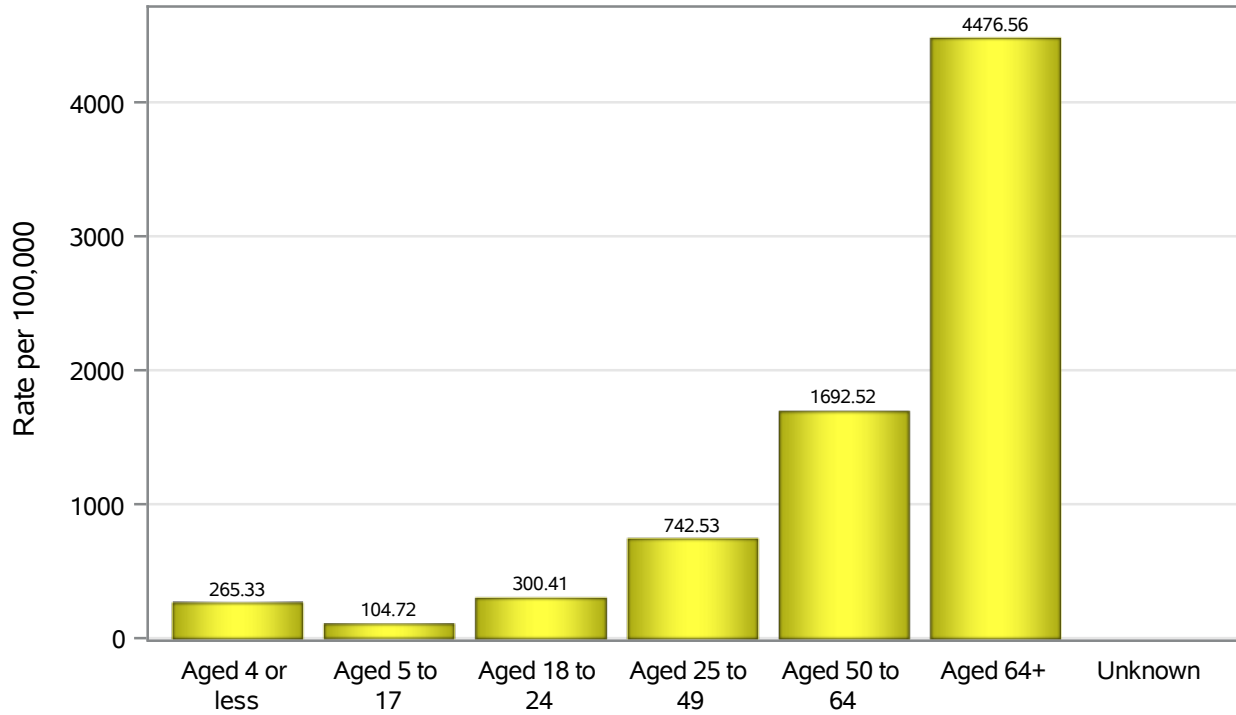


Investigations are ongoing; data are subject to change.

Reporting through 03APR2023

Henderson zip codes include 89002, 89011, 89012, 89014, 89015, 89044, 89052, 89074, 89119, 89120, 89122, 89123, 89124, 89183.

Hospitalization Age Rates in Henderson

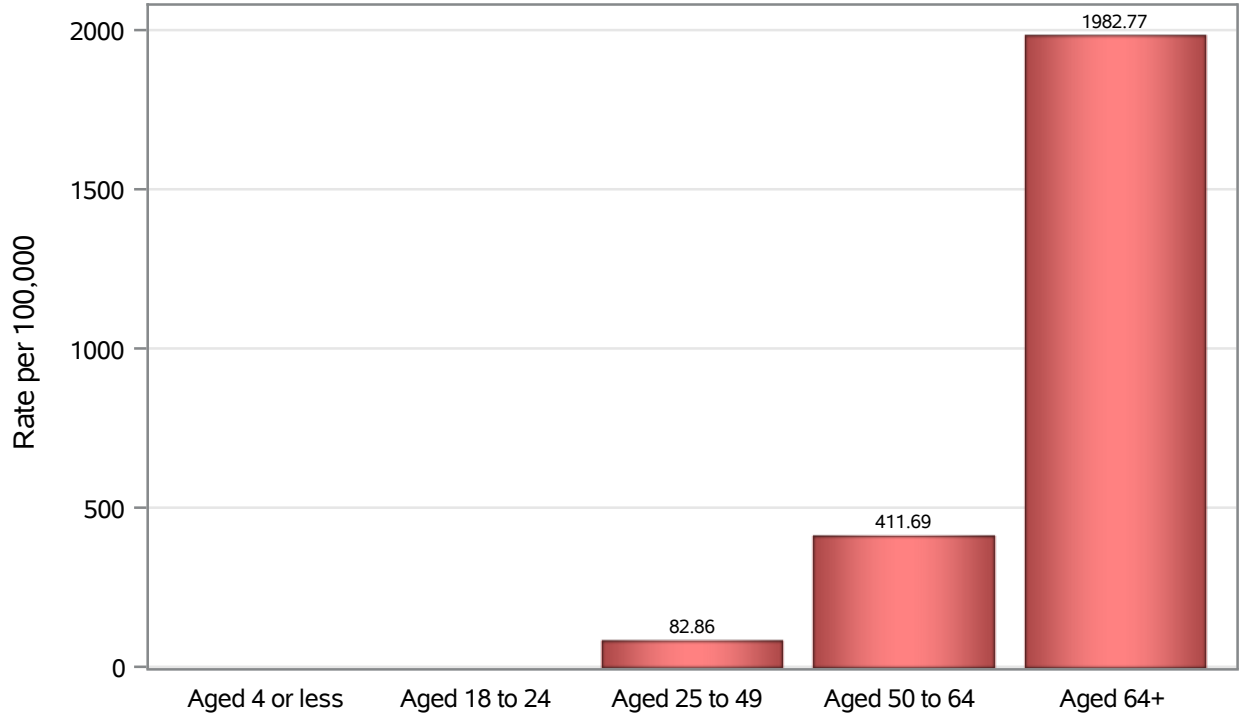


Investigations are ongoing; data are subject to change.

Reporting through 03APR2023

Henderson zip codes include 89002, 89011, 89012, 89014, 89015, 89044, 89052, 89074, 89119, 89120, 89122, 89123, 89124, 89183.

Death Age Rates in Henderson



Investigations are ongoing; data are subject to change.

Reporting through 03APR2023

Henderson zip codes include 89002, 89011, 89012, 89014, 89015, 89044, 89052, 89074, 89119, 89120, 89122, 89123, 89124, 89183.

Table 5: Age and COVID19 in Henderson

Case Status	Age Categories	N	%	Population	Rate per 100,000
Cases	Aged 4 or less	3166	2.4	29,021	10909
	Aged 5 to 17	13599	10.5	82,126	16559
	Aged 18 to 24	13269	10.3	44,273	29971
	Aged 25 to 49	54576	42.2	187064	29175
	Aged 50 to 64	25876	20.0	102746	25184
	Aged 64+	18929	14.6	86,495	21885
	Unknown	28	0.0	.	.
Hospitalizations	Aged 4 or less	77	1.1	29,021	265.33
	Aged 5 to 17	86	1.2	82,126	104.72
	Aged 18 to 24	133	1.8	44,273	300.41
	Aged 25 to 49	1389	19.0	187064	742.53
	Aged 50 to 64	1739	23.8	102746	1692.5
	Aged 64+	3872	53.1	86,495	4476.6
	Unknown	1	0.0	.	.
Deaths	Aged 4 or less	1	0.0	29,021	.
	Aged 18 to 24	4	0.2	44,273	.
	Aged 25 to 49	155	6.7	187064	82.86
	Aged 50 to 64	423	18.4	102746	411.69
	Aged 64+	1715	74.6	86,495	1982.8

Note1: Population data source for calculating rate estimates: U.S. Census Bureau, ACS 5-year estimate.

Note2: Rates for categories with fewer than 12 cases are suppressed due to high relative standard error.

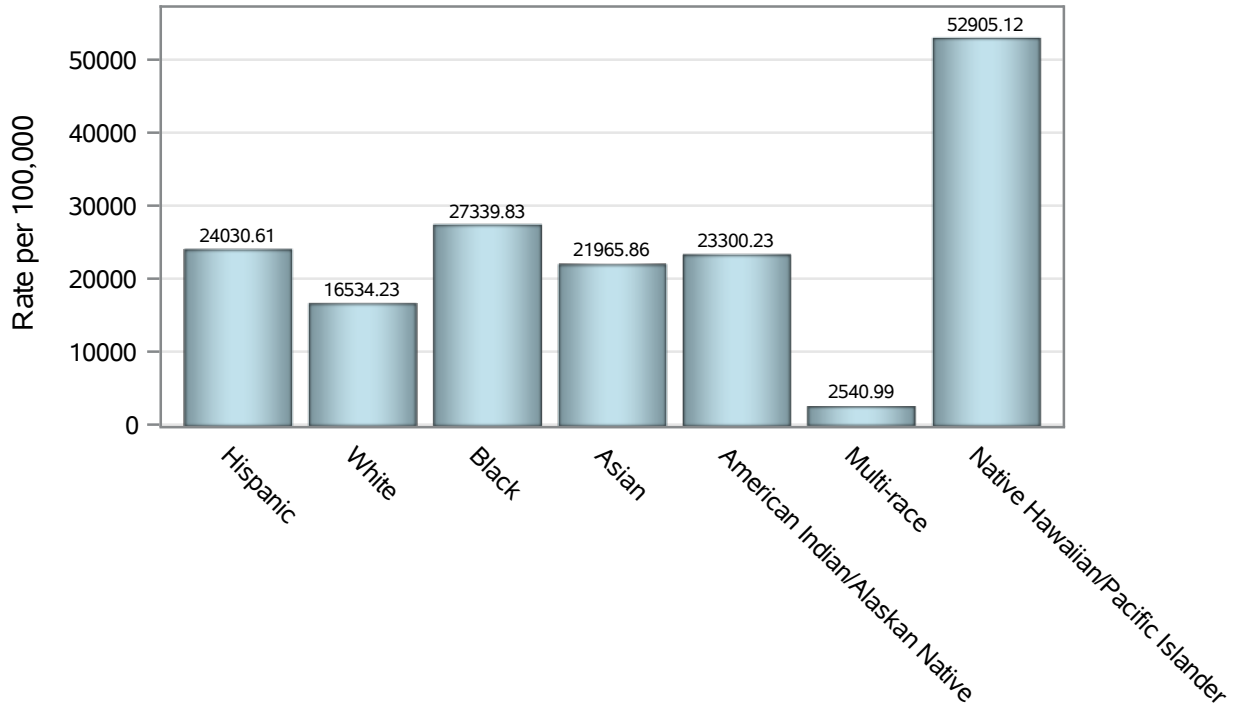
Note3: Hospitalizations are regardless of deceased status; Deaths are regardless of hospitalization status

Investigations are ongoing; data are subject to change.

Reporting through 03APR2023

Henderson zip codes include 89002, 89011, 89012, 89014, 89015, 89044, 89052, 89074, 89119, 89120, 89122, 89123, 89124, 89183.

Case Race/Ethnicity Rates in Henderson

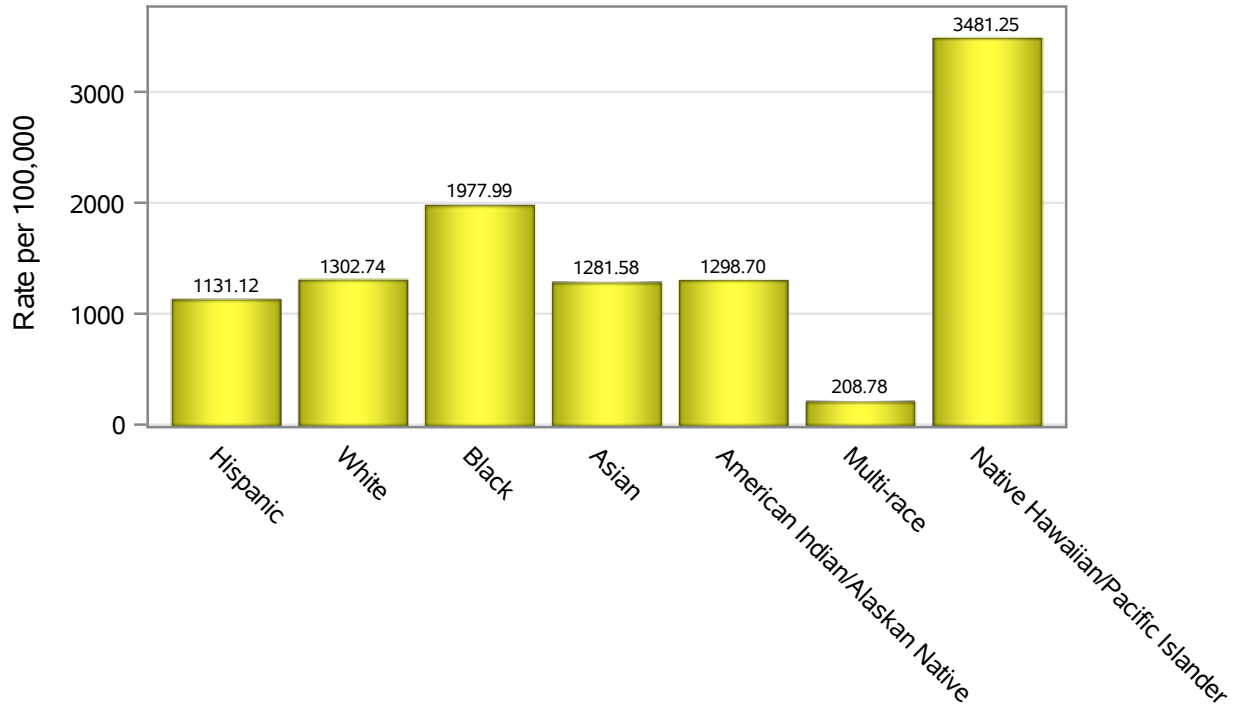


Investigations are ongoing; data are subject to change.

Reporting through 03APR2023

Henderson zip codes include 89002, 89011, 89012, 89014, 89015, 89044, 89052, 89074, 89119, 89120, 89122, 89123, 89124, 89183.

Hospitalization Race/Ethnicity Rates in Henderson

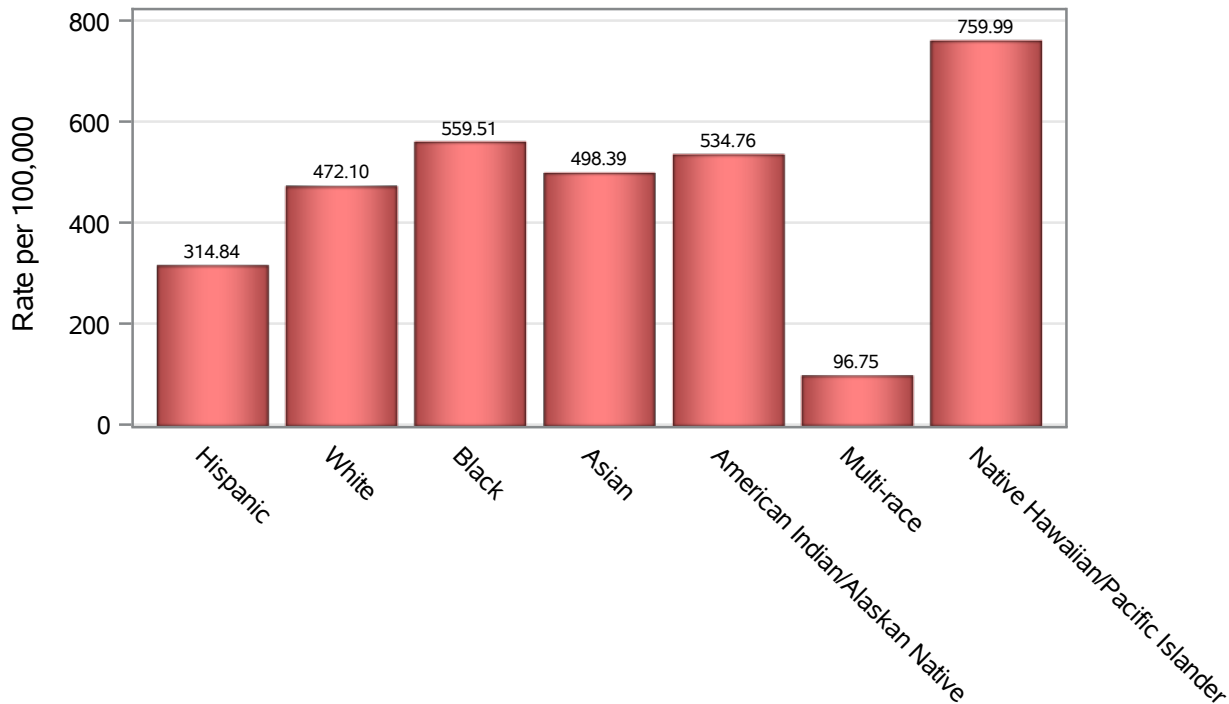


Investigations are ongoing; data are subject to change.

Reporting through 03APR2023

Henderson zip codes include 89002, 89011, 89012, 89014, 89015, 89044, 89052, 89074, 89119, 89120, 89122, 89123, 89124, 89183.

Death Race/Ethnicity Rates in Henderson



Investigations are ongoing; data are subject to change.

Reporting through 03APR2023

Henderson zip codes include 89002, 89011, 89012, 89014, 89015, 89044, 89052, 89074, 89119, 89120, 89122, 89123, 89124, 89183.

Table 6: Race/Ethnicity and COVID19 in Henderson

Case Status	Race Ethnicity Categories	N	%	Population	Rate per 100,000
Cases	Hispanic	29233	22.6	121649	24031
	White	48191	37.2	291462	16534
	Black	10408	8.0	38,069	27340
	Asian	11415	8.8	51,967	21966
	American Indian/Alaskan Native	610	0.5	2,618	23300
	Multi-race	499	0.4	19,638	2541.0
	Native Hawaiian/Pacific Islander	2158	1.7	4,079	52905
	Unknown	26929	20.8	.	.
Hospitalizations	Hispanic	1376	18.9	121649	1131.1
	White	3797	52.0	291462	1302.7
	Black	753	10.3	38,069	1978.0
	Asian	666	9.1	51,967	1281.6
	American Indian/Alaskan Native	34	0.5	2,618	1298.7
	Multi-race	41	0.6	19,638	208.78
	Native Hawaiian/Pacific Islander	142	1.9	4,079	3481.2
	Unknown	488	6.7	.	.
Deaths	Hispanic	383	16.7	121649	314.84
	White	1376	59.9	291462	472.10
	Black	213	9.3	38,069	559.51
	Asian	259	11.3	51,967	498.39
	American Indian/Alaskan Native	14	0.6	2,618	534.76
	Multi-race	19	0.8	19,638	96.75
	Native Hawaiian/Pacific Islander	31	1.3	4,079	759.99
	Unknown	3	0.1	.	.

Note1: Population data source for calculating rate estimates: U.S. Census Bureau, ACS 5-year estimate.

Note2: Rates for categories with fewer than 12 cases are suppressed due to high relative standard error.

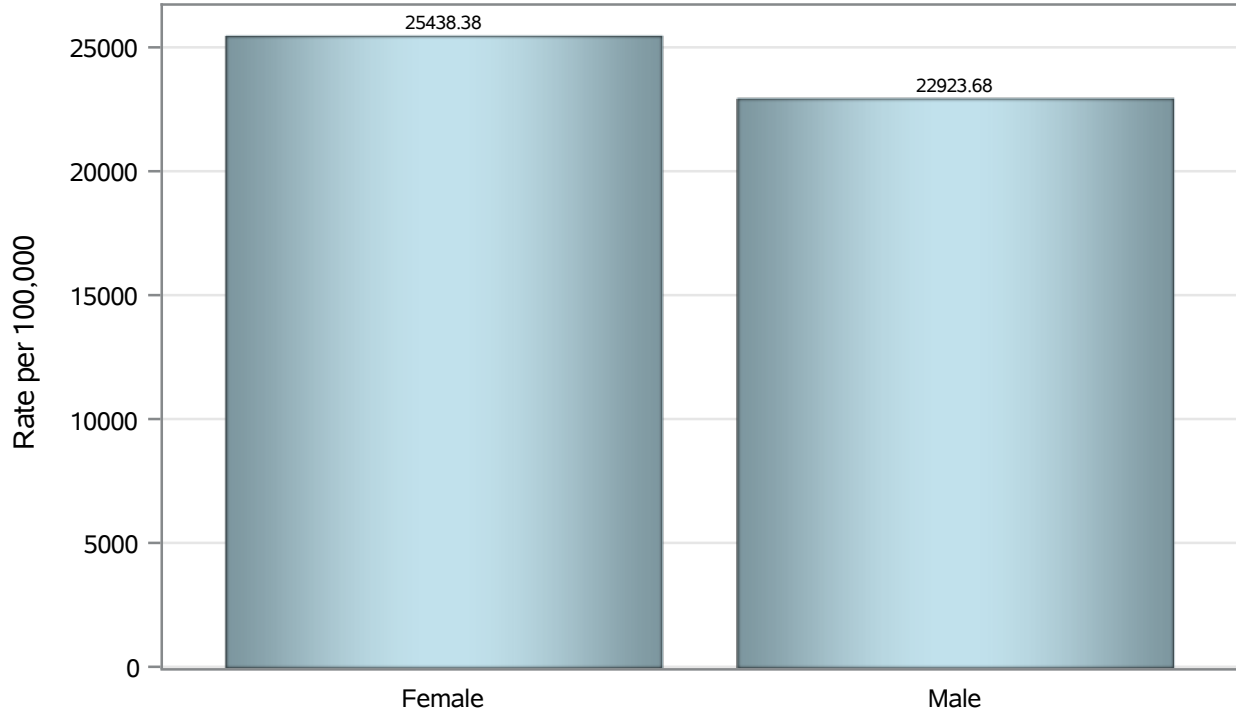
Note3: Hospitalizations are regardless of deceased status; Deaths are regardless of hospitalization status

Investigations are ongoing; data are subject to change.

Reporting through 03APR2023

Henderson zip codes include 89002, 89011, 89012, 89014, 89015, 89044, 89052, 89074, 89119, 89120, 89122, 89123, 89124, 89183.

Case Birth Sex Rates in Henderson

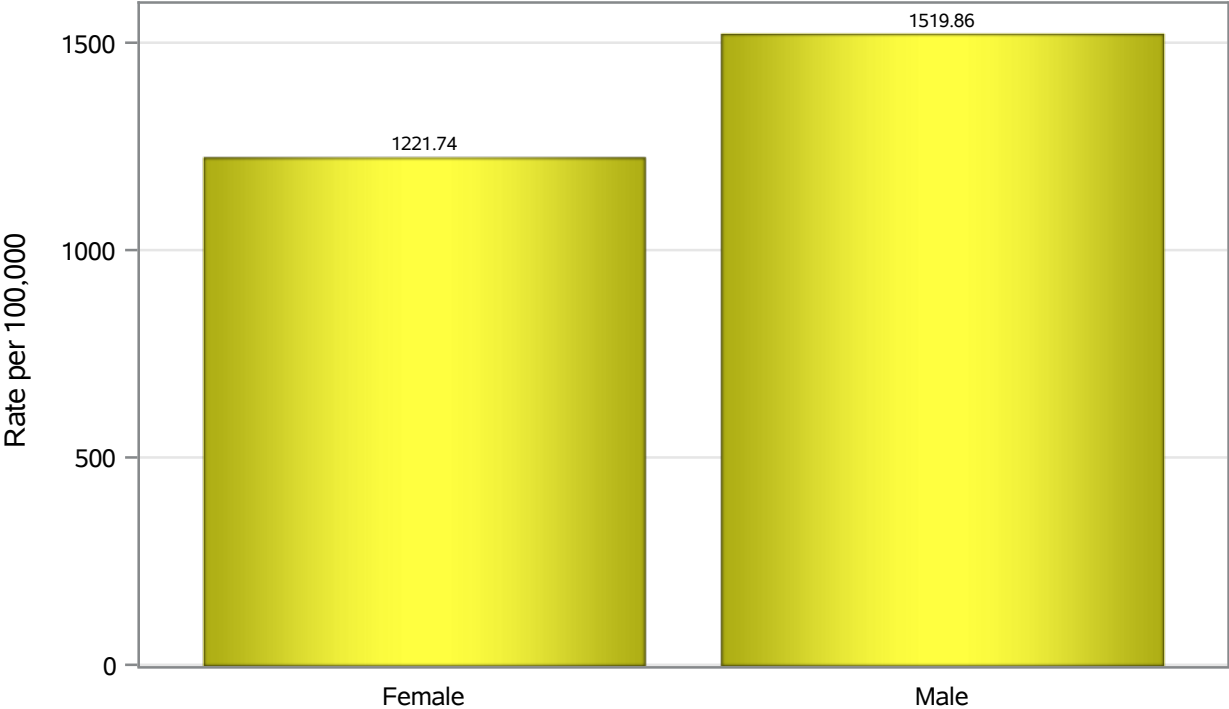


Investigations are ongoing; data are subject to change.

Reporting through 03APR2023

Henderson zip codes include 89002, 89011, 89012, 89014, 89015, 89044, 89052, 89074, 89119, 89120, 89122, 89123, 89124, 89183.

Hospitalization Birth Sex Rates in Henderson

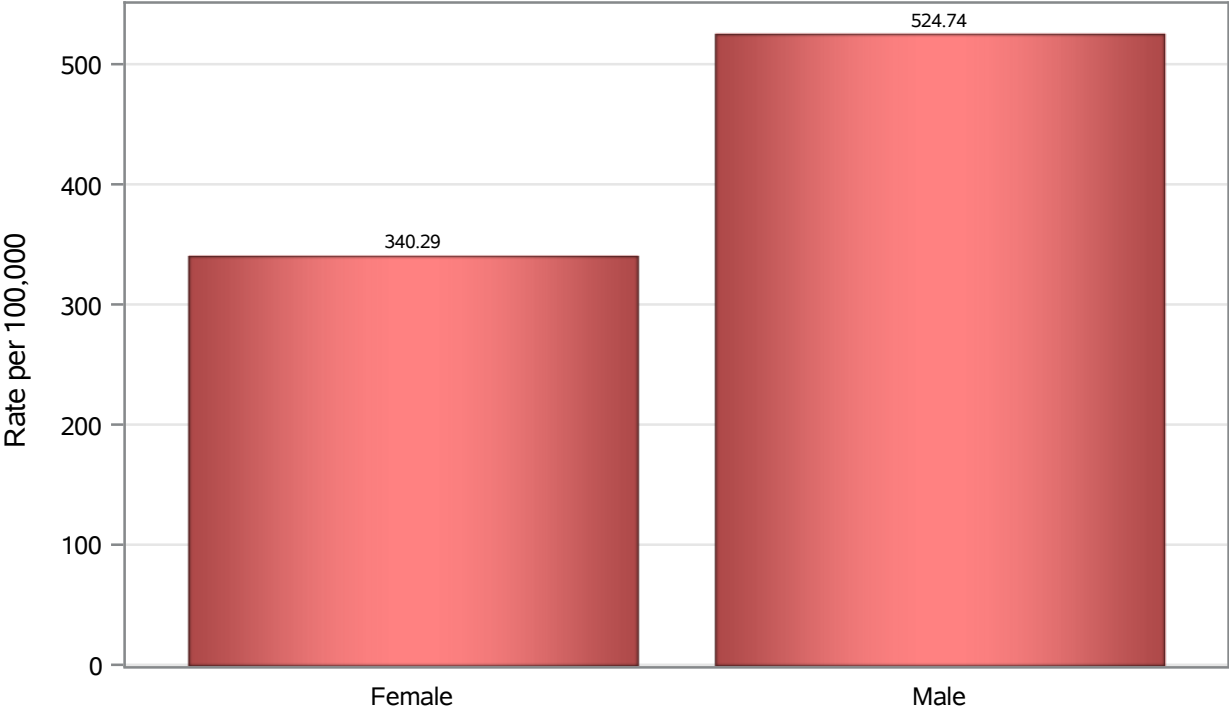


Investigations are ongoing; data are subject to change.

Reporting through 03APR2023

Henderson zip codes include 89002, 89011, 89012, 89014, 89015, 89044, 89052, 89074, 89119, 89120, 89122, 89123, 89124, 89183.

Death Birth Sex Rates in Henderson



Investigations are ongoing; data are subject to change.

Reporting through 03APR2023

Henderson zip codes include 89002, 89011, 89012, 89014, 89015, 89044, 89052, 89074, 89119, 89120, 89122, 89123, 89124, 89183.

Table 7: Birth Sex and COVID19 in Henderson

Case Status	Birth Sex Categories	N	%	Population	Rate per 100,000
Cases	Female	67878	52.4	266833	25438
	Male	60723	46.9	264892	22924
	Unknown	842	0.7	.	.
Hospitalizations	Female	3260	44.7	266833	1221.7
	Male	4026	55.2	264892	1519.9
	Unknown	11	0.2	.	.
Deaths	Female	908	39.5	266833	340.29
	Male	1390	60.5	264892	524.74

Note1: Population data source for calculating rate estimates: U.S. Census Bureau, ACS 5-year estimate.

Note2: Rates for categories with fewer than 12 cases are suppressed due to high relative standard error.

Note3: Hospitalizations are regardless of deceased status; Deaths are regardless of hospitalization status

Investigations are ongoing; data are subject to change.

Reporting through 03APR2023

Henderson zip codes include 89002, 89011, 89012, 89014, 89015, 89044, 89052, 89074, 89119, 89120, 89122, 89123, 89124, 89183.