

# COVID-19 Trends

Clark County, Nevada

Document creation date: September 7, 2022

- General notes: This report uses surveillance data collected by the Southern Nevada Health District. Due to delays related to laboratory processing, reporting, and case investigations, data from the most recent days are less complete than data from older time points. For this reason, as of June 10, 2020 this report will not display data from the previous three days prior to the date that the report was created. As many case investigations are ongoing, all data presented in this report are considered preliminary and subject to change. Data regarding cases, hospitalizations, deaths, and labs were last updated September 7, 2022 at 12:00 AM, and data is reported up through September 3, 2022.
- Cases: Symptom onset date was used for aggregating cases. If symptom onset date was missing, the following dates were substituted in this order: diagnosis date, lab collection date, report date (date case was reported to SNHD), event creation date (date case was entered into TriSano, SNHD's surveillance system).
- Hospitalizations: Admission date reported the the Nevada Hospital Association was used for aggregating hospitalizations. One person could have more than one admissions.
- Deaths: Date of death was used for aggregating deaths. If date of death was missing, report date was used.
- For the "7-Day Average of Daily New Cases per 100K, by Age Group (Years)" graph and table, the population data source for calculating rate estimates was from Nevada State Demographer "2019 ASRHO Estimates and Projections Summary 2000 to 2038", 2020 projection, vintage 2019. Rates for individual age categories may be based on small numbers, which may give unstable estimates.
- All graphs in this report show data from approximately 60 days prior to the date of the report.
- All tables show data from the last 14 days before the current date, with the exception of the "Percent Change in Weekly Totals from Previous Week", which displays data from the previous eight completed weeks.
- For the "Percent of People Receiving COVID-19 PCR Tests Who Have Positive Results" graph, one person who has multiple specimens collected in one day is only reported once. If any test of that person is positive, that person counts as a positive result. If all tests of that individual are negative, that person counts as a negative result. Laboratory tests were included if they were a test assessing for the presence of SARS-CoV-2 viral RNA, for example PCR tests. Antibody and antigen tests were excluded.

# COVID-19 Cases

Clark County, NV

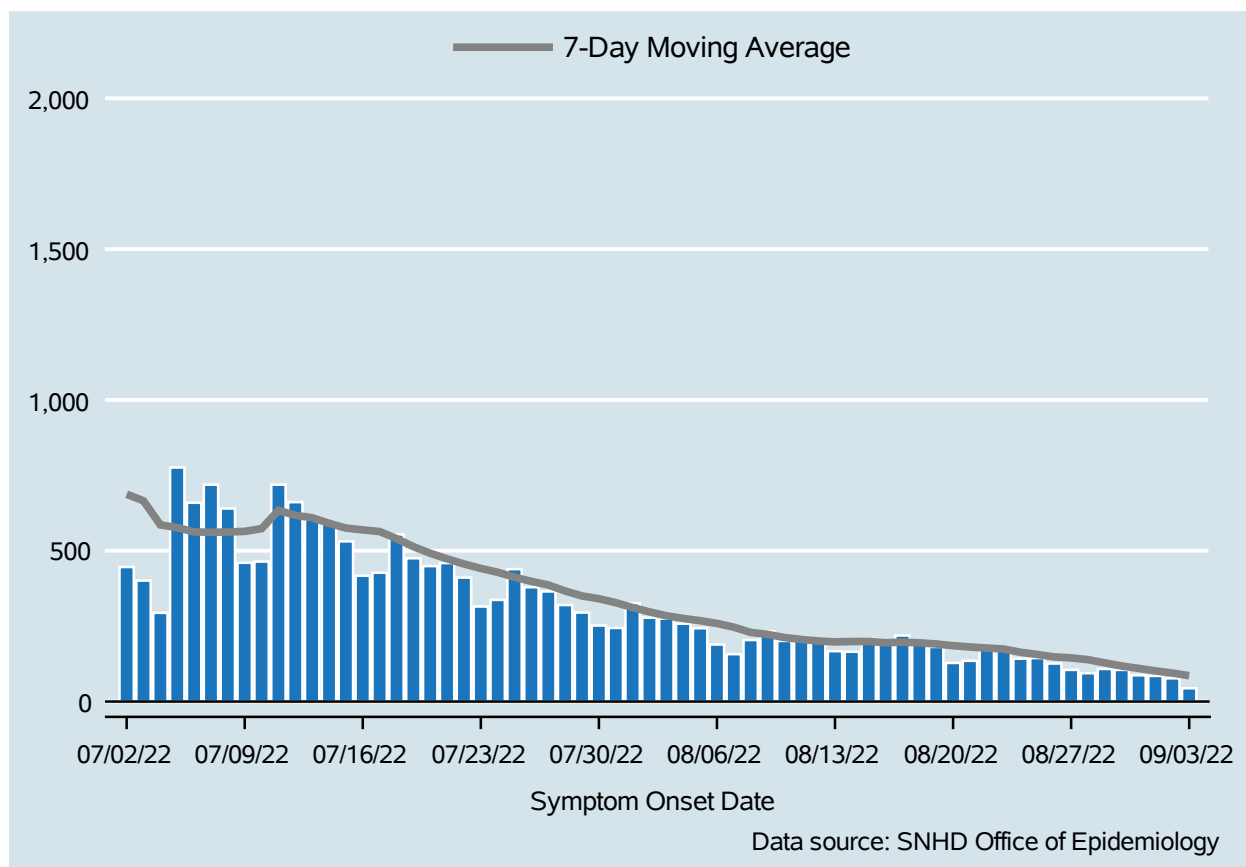


Table 1: COVID-19 Cases per Day, Clark County, NV

Date	Cases Per Day	7-Day Moving Average
Aug 21	135	180.9
Aug 22	183	177.3
Aug 23	178	174.1
Aug 24	142	163.1
Aug 25	144	155.9
Aug 26	126	148.0
Aug 27	105	144.7
Aug 28	94	138.9
Aug 29	108	128.1
Aug 30	105	117.7
Aug 31	87	109.9
Sep 01	85	101.4
Sep 02	77	94.4
Sep 03	44	85.7

# COVID-19 Hospitalizations

Clark County, NV

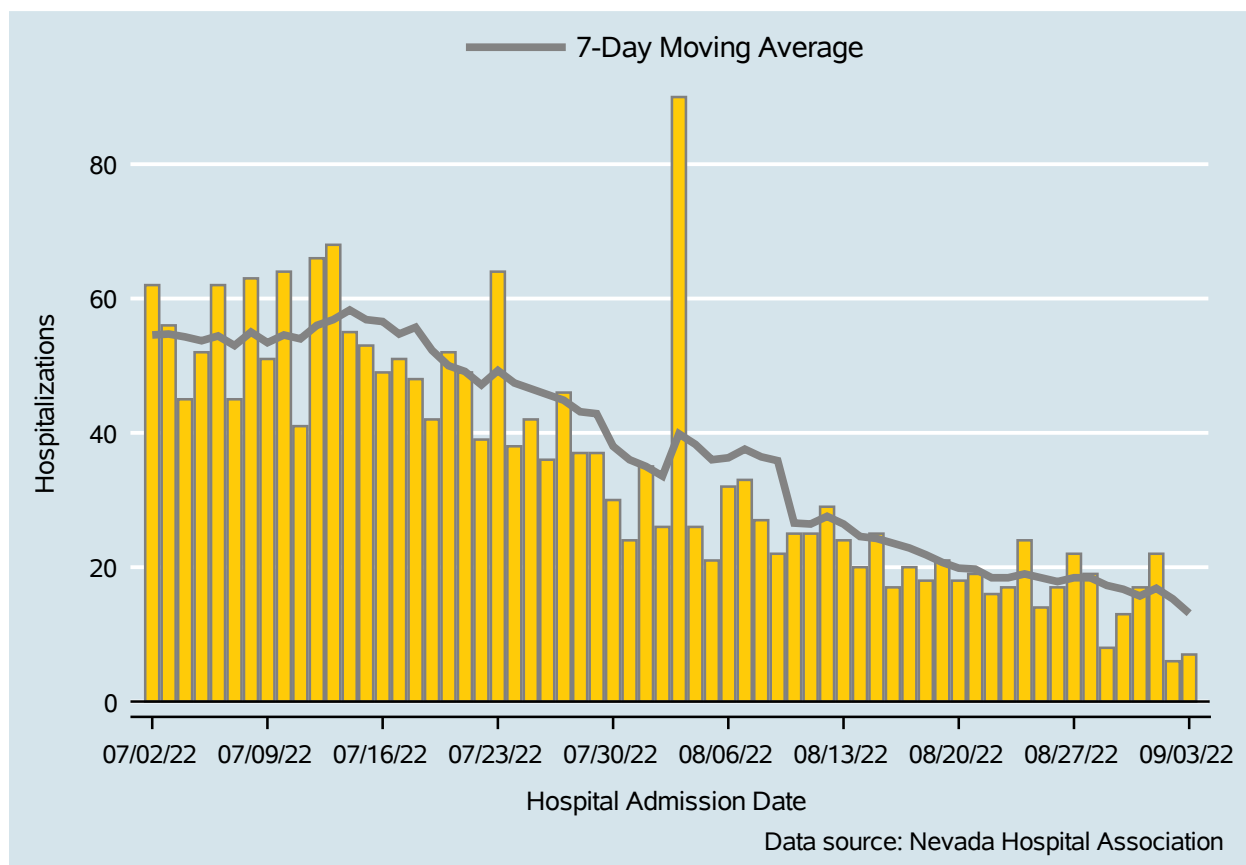


Table 2: COVID-19 Hospitalizations per Day, Clark County, NV

Date	Hospitalizations Per Day	7-Day Moving Average
Aug 21	19	19.7
Aug 22	16	18.4
Aug 23	17	18.4
Aug 24	24	19.0
Aug 25	14	18.4
Aug 26	17	17.9
Aug 27	22	18.4
Aug 28	19	18.4
Aug 29	8	17.3
Aug 30	13	16.7
Aug 31	17	15.7
Sep 01	22	16.9
Sep 02	6	15.3
Sep 03	7	13.1

## Bed Occupancy of COVID-19 Hospitalizations

Clark County, NV

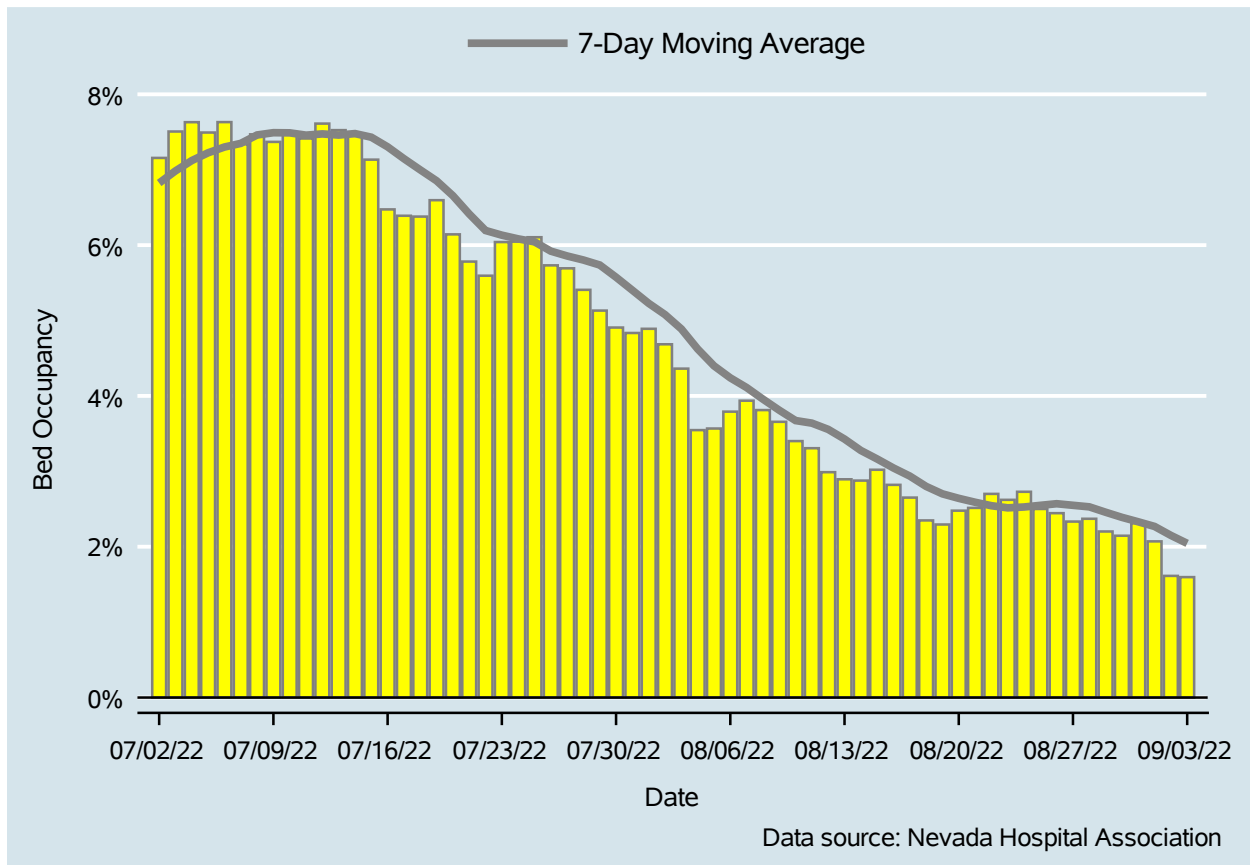


Table 3: Percent of Bed Occupancy per Day, Clark County, NV

Date	Bed Occupancy Per Day	7-Day Moving Average
Aug 21	2.52%	2.59%
Aug 22	2.70%	2.54%
Aug 23	2.62%	2.52%
Aug 24	2.73%	2.53%
Aug 25	2.50%	2.55%
Aug 26	2.44%	2.57%
Aug 27	2.33%	2.55%
Aug 28	2.37%	2.53%
Aug 29	2.20%	2.46%
Aug 30	2.15%	2.39%
Aug 31	2.31%	2.33%
Sep 01	2.07%	2.27%
Sep 02	1.61%	2.15%
Sep 03	1.60%	2.04%

# COVID-19 Deaths

Clark County, NV

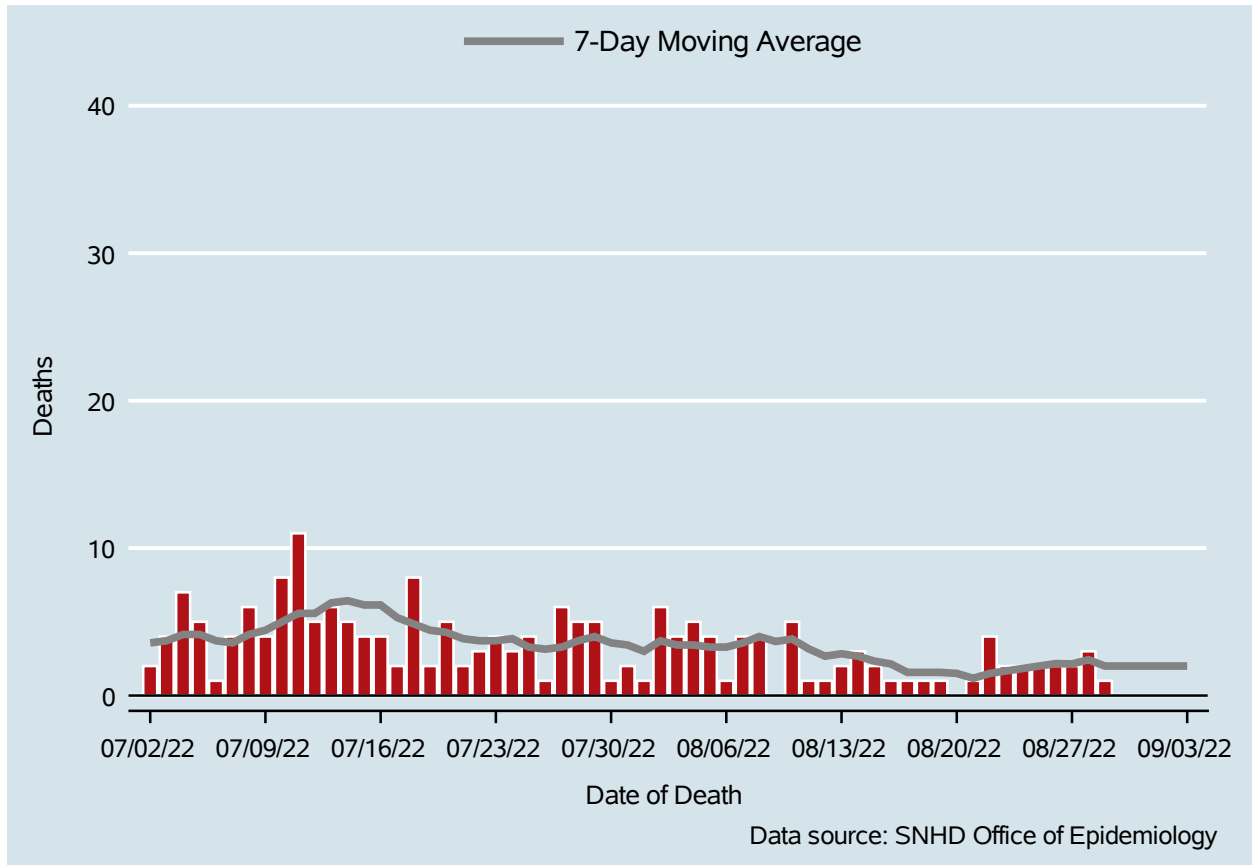


Table 4: COVID-19 Deaths per Day, Clark County, NV

Date	Deaths Per Day	7-Day Moving Average
Aug 21	1	1.2
Aug 22	4	1.5
Aug 23	2	1.7
Aug 24	2	1.8
Aug 25	2	2.0
Aug 26	2	2.2
Aug 27	2	2.1
Aug 28	3	2.4
Aug 29	1	2.0
Aug 30	.	2.0
Aug 31	.	2.0
Sep 01	.	2.0
Sep 02	.	2.0
Sep 03	.	2.0

## 7-Day Average of Daily New Cases per 100K, by Age Group (Years)

Clark County, NV

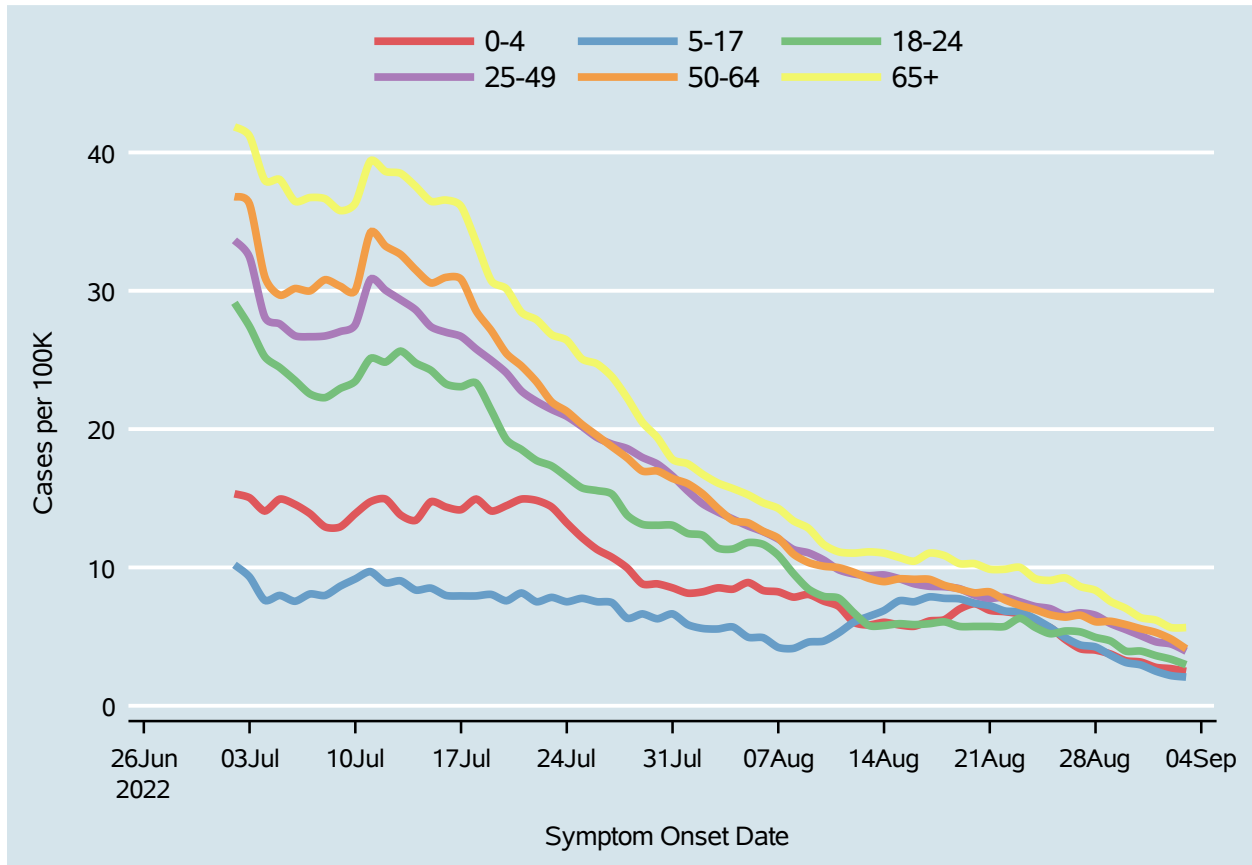
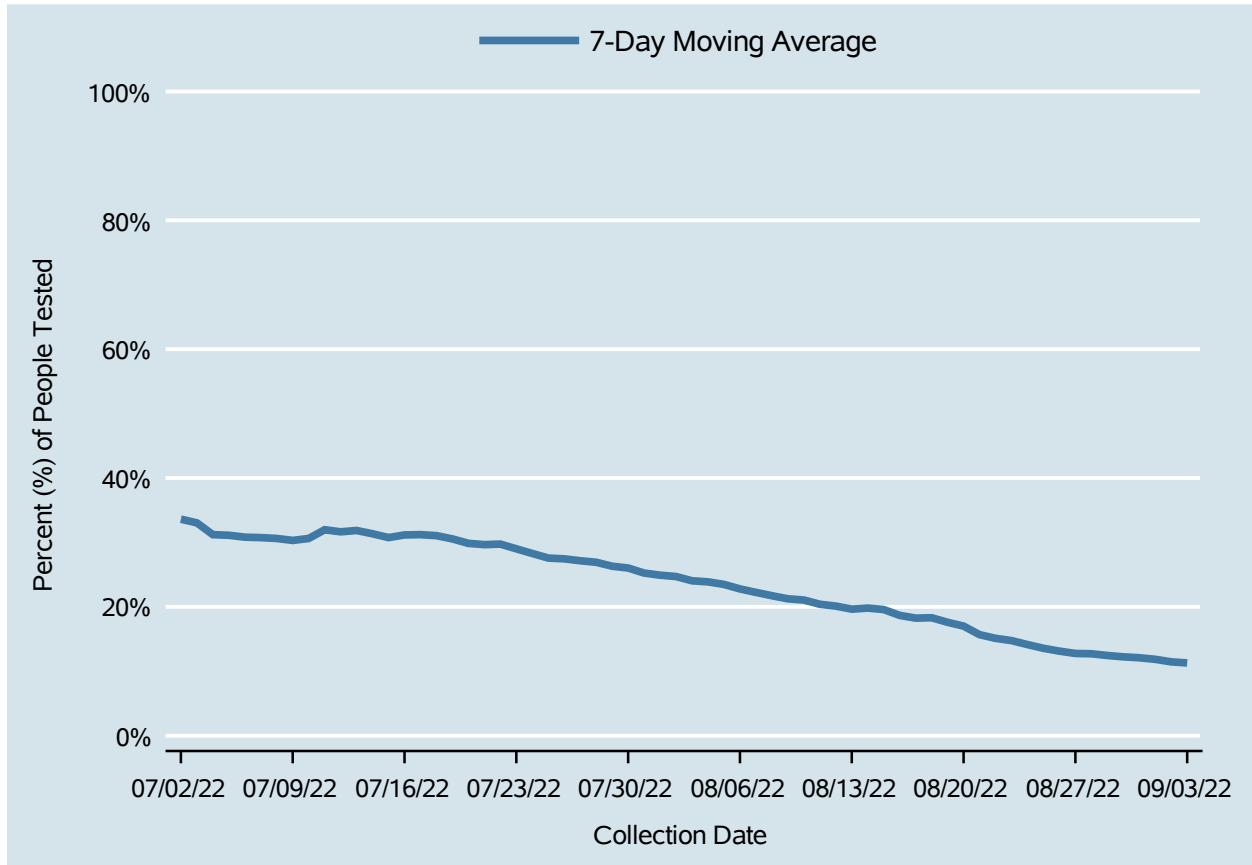


Table 5: 7-Day Average of Daily New Cases per 100K, by Age Group (Years)

Date	0-4	5-17	18-24	25-49	50-64	65+
Aug 21	6.9	7.2	5.7	7.8	8.2	9.9
Aug 22	6.8	6.9	5.7	7.8	7.7	9.9
Aug 23	6.6	6.8	6.3	7.5	7.3	10.0
Aug 24	5.9	6.3	5.7	7.2	6.9	9.2
Aug 25	5.7	5.7	5.2	7.0	6.6	9.1
Aug 26	4.8	4.9	5.4	6.5	6.4	9.2
Aug 27	4.1	4.4	5.3	6.7	6.5	8.6
Aug 28	4.0	4.3	4.9	6.5	6.1	8.3
Aug 29	3.7	3.7	4.7	5.9	6.1	7.5
Aug 30	3.3	3.1	4.0	5.5	5.9	7.0
Aug 31	3.2	3.0	4.0	5.1	5.6	6.4
Sep 01	2.8	2.5	3.6	4.6	5.3	6.2
Sep 02	2.7	2.2	3.4	4.5	4.8	5.7
Sep 03	2.5	2.1	3.0	3.9	4.1	5.7

# Percent of People Receiving COVID-19 PCR Tests Who Have Positive Results

Clark County, NV



*Report prepared by: Ying Zhang, PhD, MPH (Office of Epidemiology) and Lei Zhang, MS (Office of Informatics)*