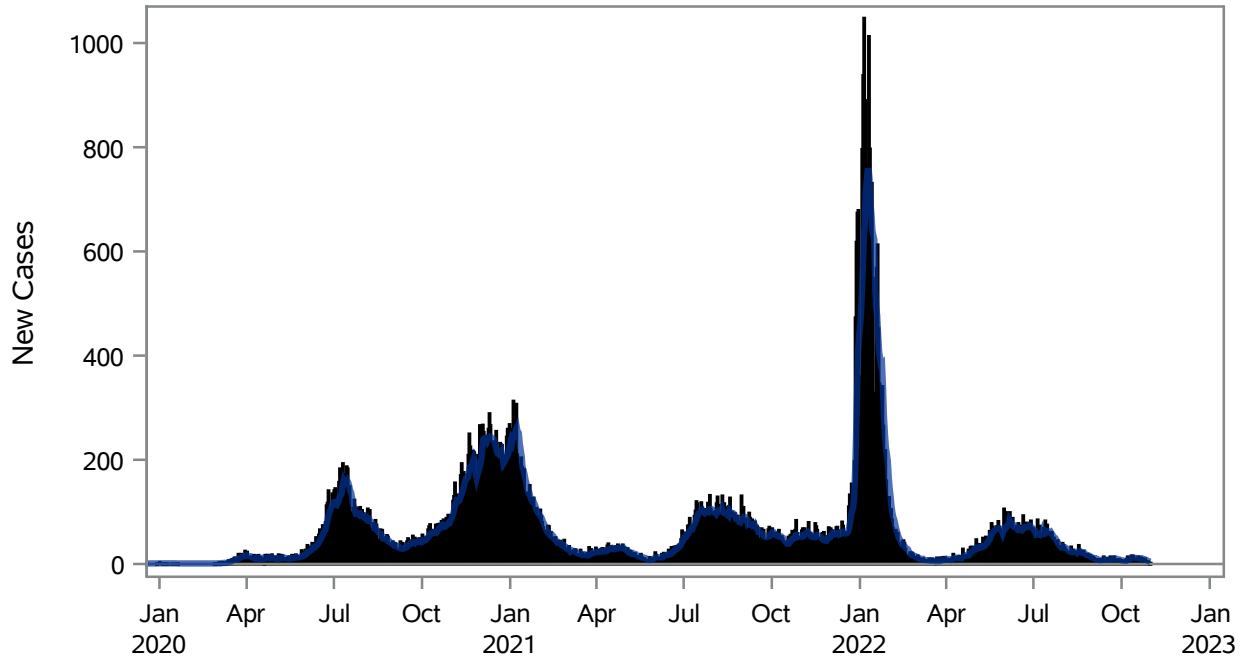


COVID19 Cases for North Las Vegas, 7-Day Moving Average



■ New Cases — 7-Day Moving Average

Investigations are ongoing; data are subject to change.

Reporting through 31OCT2022

North Las Vegas zip codes include 89030, 89031, 89032, 89033, 89036, 89081, 89084, 89085, 89086, 89087.

Table 1: New COVID19 Cases and 7-Day Moving Average in North Las Vegas, Previous Two Weeks

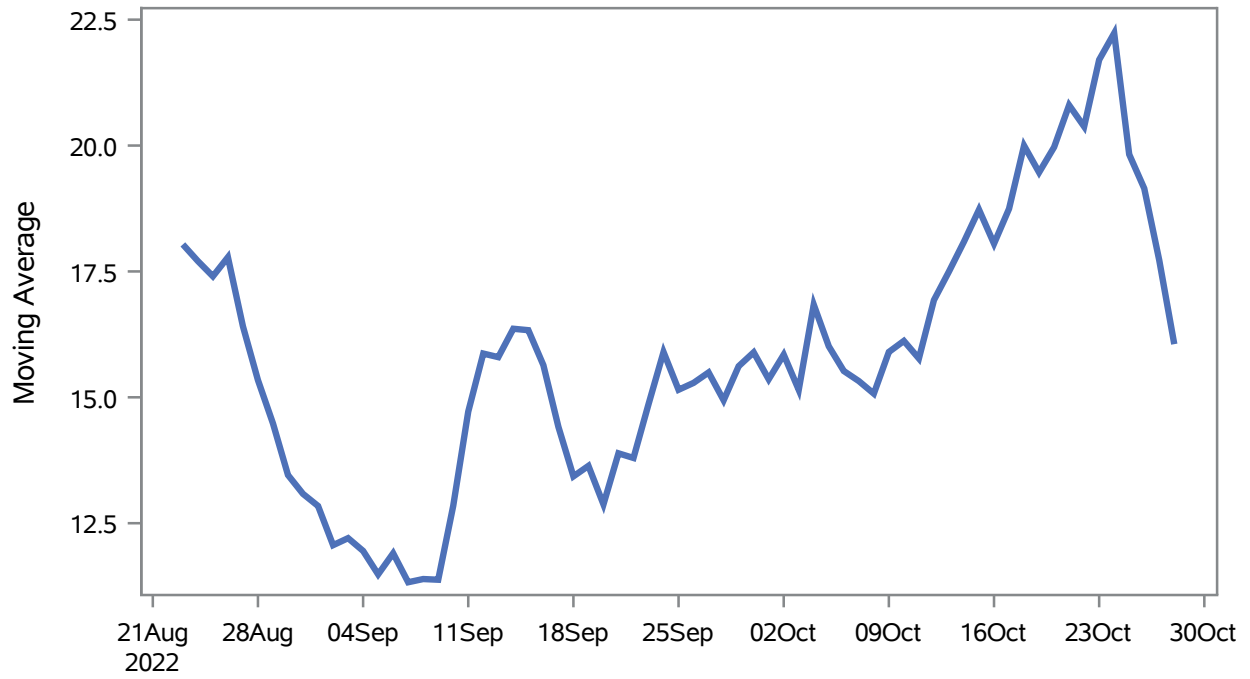
Date (Daily)	New Cases	7-Day Moving Average
18OCT2022	14	10.86
19OCT2022	10	10.71
20OCT2022	11	10.14
21OCT2022	12	10.86
22OCT2022	10	11.00
23OCT2022	4	10.14
24OCT2022	7	9.71
25OCT2022	10	9.14
26OCT2022	6	8.57
27OCT2022	3	7.43
28OCT2022	5	6.43
29OCT2022	3	5.43

Note1: Event Date is calculated as follows based on completed information:
1) Disease onset date 2) Disease diagnosis date 3) Lab result collection date 4) Report date to SNHD.

**Investigations are ongoing; data are subject to change.
Reporting through 31OCT2022**

North Las Vegas zip codes include 89030, 89031, 89032, 89033, 89036, 89081, 89084, 89085, 89086, 89087.

Percent of People Receiving COVID-19 Viral Tests Who Have Positive Results in North Las Vegas



Investigations are ongoing; data are subject to change.

Reporting through 31OCT2022

North Las Vegas zip codes include 89030, 89031, 89032, 89033, 89036, 89081, 89084, 89085, 89086, 89087.

Table 2: Percent of People Receiving COVID-19 Viral Tests Who Have Positive Results in North Las Vegas

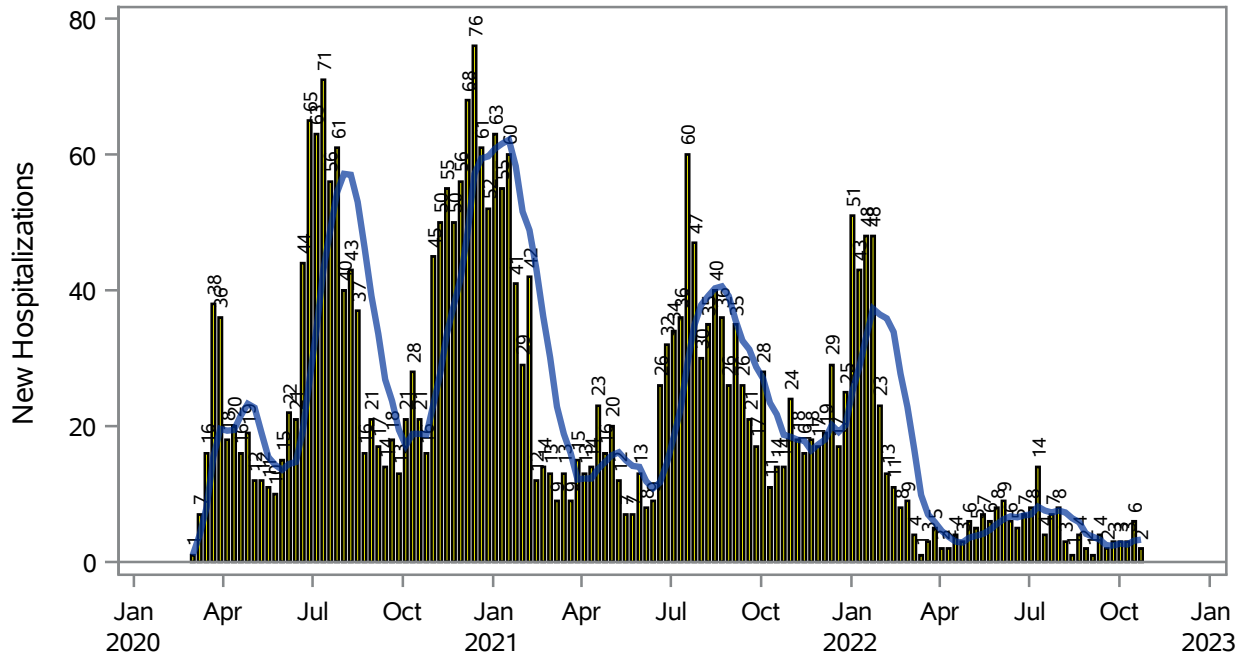
Collection Date	Positive	Negative	Equivocal	Total	% Positivity	7-Day Moving Average
15OCT2022	11	44		55	20.00	18.7
16OCT2022	8	50		58	13.79	18.1
17OCT2022	22	92		114	19.30	18.7
18OCT2022	26	67		93	27.96	20.0
19OCT2022	14	81		95	14.74	19.5
20OCT2022	23	81		104	22.12	20.0
21OCT2022	23	60		83	27.71	20.8
22OCT2022	8	39		47	17.02	20.4
23OCT2022	15	50		65	23.08	21.7
24OCT2022	23	77		100	23.00	22.2
25OCT2022	6	47	1	54	11.11	19.8
26OCT2022	7	63		70	10.00	19.1
27OCT2022	4	29		33	12.12	17.7
28OCT2022	.	3		3	.	16.1

Note: Testing Data includes a 3 day delay

**Investigations are ongoing; data are subject to change.
Reporting through 31OCT2022**

North Las Vegas zip codes include 89030, 89031, 89032, 89033, 89036, 89081, 89084, 89085, 89086, 89087.

COVID19 Hospitalizations for North Las Vegas, 7-Day Moving Average



New Hospitalizations
 7-Day Moving Average

Investigations are ongoing; data are subject to change.

Reporting through 31OCT2022

North Las Vegas zip codes include 89030, 89031, 89032, 89033, 89036, 89081, 89084, 89085, 89086, 89087.

Table 3: New COVID19-Related Hospitalizations and 7-Day Moving Average in North Las Vegas, previous month

Week	Hospitalizations	7-Day Moving Average
02OCT2022	3	2.71
09OCT2022	3	2.57
16OCT2022	6	3.14
23OCT2022	2	3.29

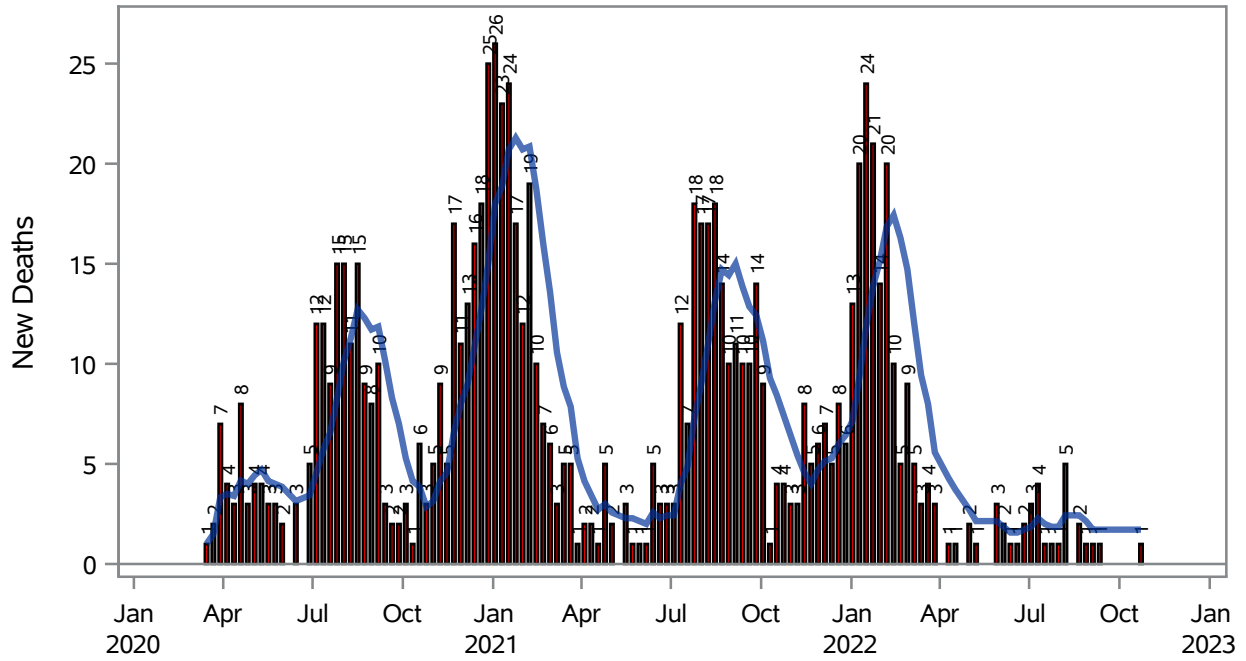
Note1: Admission Date is calculated as follows based on completed information:
A) COVID19 Case is hospitalized B) COVID19 Case has a hospital admission date.

If admission date is missing, then the following is substituted temporarily, in order:
1) Disease onset date 2) Disease diagnosis date 3) Lab result collection date 4) Report date to SNHD.

**Investigations are ongoing; data are subject to change.
Reporting through 31OCT2022**

North Las Vegas zip codes include 89030, 89031, 89032, 89033, 89036, 89081, 89084, 89085, 89086, 89087.

COVID19 Deaths for North Las Vegas, 7-Day Moving Average



■ New Deaths — 7-Day Moving Average

Investigations are ongoing; data are subject to change.

Reporting through 31OCT2022

North Las Vegas zip codes include 89030, 89031, 89032, 89033, 89036, 89081, 89084, 89085, 89086, 89087.

Table 4: New COVID19-Related Deaths and 7-Day Moving Average in North Las Vegas, Previous Month

Week	Deaths	7-Day Moving Average
23OCT2022	1	1.71

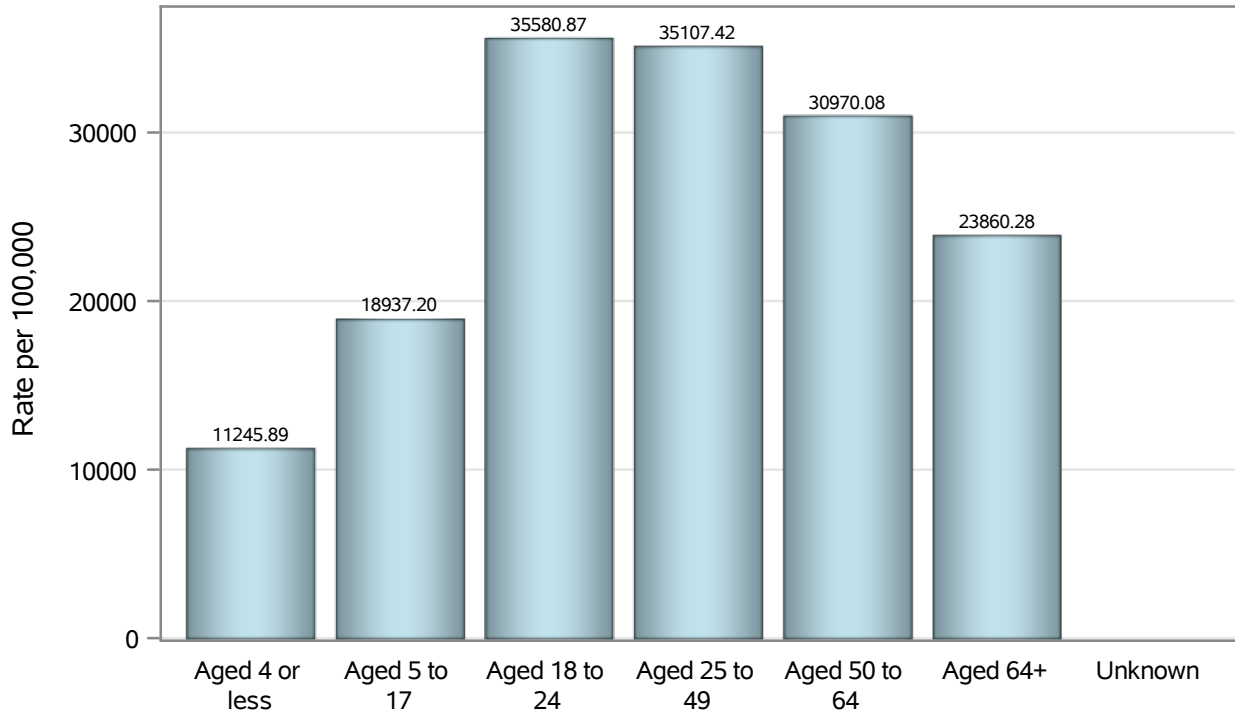
Note1: Date of Death is calculated as follows based on completed information:
A) COVID19 Case is reported as deceased B) COVID19 Case has a reported date of death.

If date of death is missing, then the following is substituted temporarily, in order:
1) Disease onset date 2) Disease diagnosis date
3) Lab result collection date 4) Report date to SNHD.

**Investigations are ongoing; data are subject to change.
Reporting through 31OCT2022**

North Las Vegas zip codes include 89030, 89031, 89032, 89033, 89036, 89081, 89084, 89085, 89086, 89087.

Case Age Rates in North Las Vegas

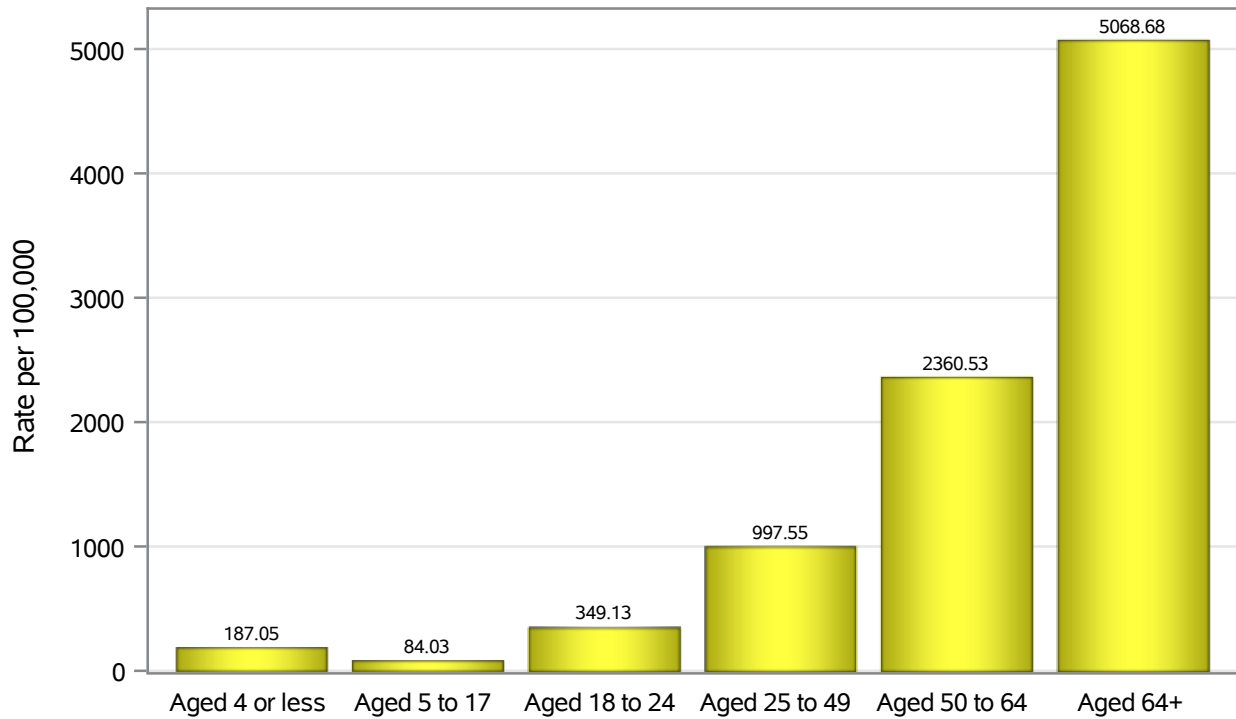


Investigations are ongoing; data are subject to change.

Reporting through 31OCT2022

North Las Vegas zip codes include 89030, 89031, 89032, 89033, 89036, 89081, 89084, 89085, 89086, 89087.

Hospitalization Age Rates in North Las Vegas

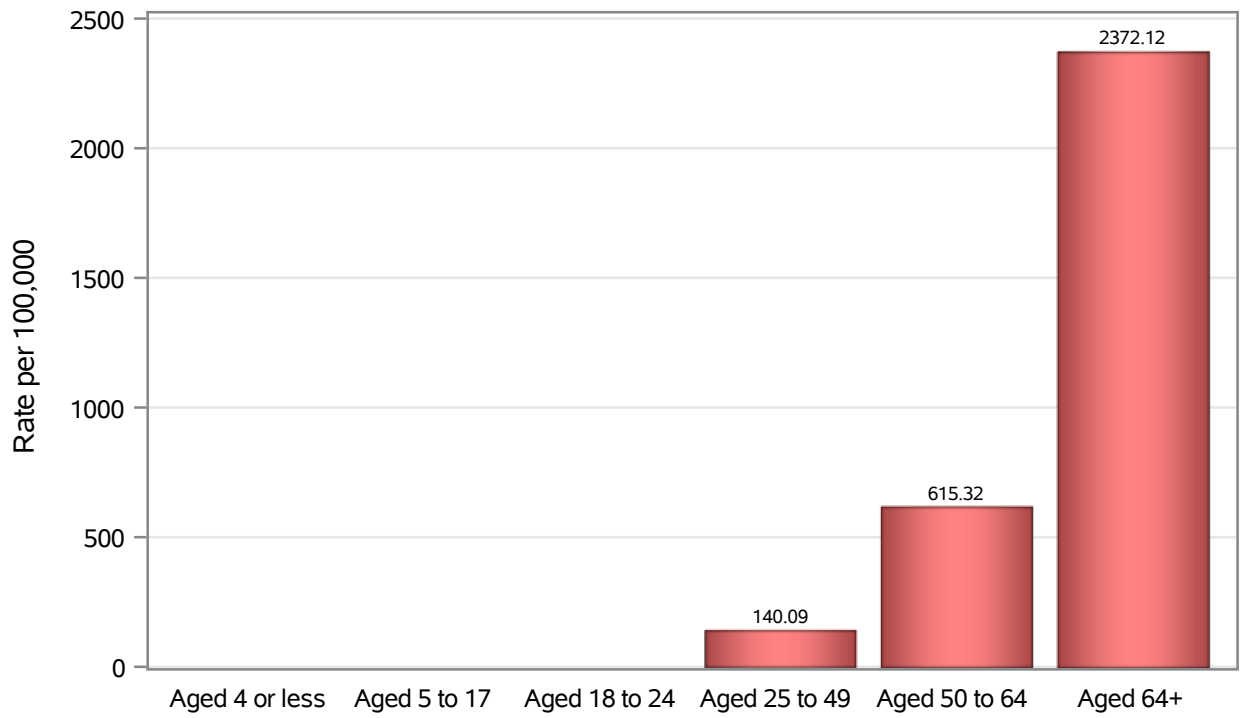


Investigations are ongoing; data are subject to change.

Reporting through 31OCT2022

North Las Vegas zip codes include 89030, 89031, 89032, 89033, 89036, 89081, 89084, 89085, 89086, 89087.

Death Age Rates in North Las Vegas



Investigations are ongoing; data are subject to change.

Reporting through 31OCT2022

North Las Vegas zip codes include 89030, 89031, 89032, 89033, 89036, 89081, 89084, 89085, 89086, 89087.

Table 5: Age and COVID19 in North Las Vegas

Case Status	Age Categories	N	%	Population	Rate per 100,000
Cases	Aged 4 or less	1984	3.0	17,642	11246
	Aged 5 to 17	9465	14.4	49,981	18937
	Aged 18 to 24	8153	12.4	22,914	35581
	Aged 25 to 49	29070	44.2	82,803	35107
	Aged 50 to 64	11375	17.3	36,729	30970
	Aged 64+	5663	8.6	23,734	23860
	Unknown	13	0.0	.	.
Hospitalizations	Aged 4 or less	33	1.1	17,642	187.05
	Aged 5 to 17	42	1.4	49,981	84.03
	Aged 18 to 24	80	2.6	22,914	349.13
	Aged 25 to 49	826	27.1	82,803	997.55
	Aged 50 to 64	867	28.4	36,729	2360.5
	Aged 64+	1203	39.4	23,734	5068.7
Deaths	Aged 4 or less	2	0.2	17,642	.
	Aged 5 to 17	1	0.1	49,981	.
	Aged 18 to 24	2	0.2	22,914	.
	Aged 25 to 49	116	12.7	82,803	140.09
	Aged 50 to 64	226	24.8	36,729	615.32
	Aged 64+	563	61.9	23,734	2372.1

Note1: Population data source for calculating rate estimates: U.S. Census Bureau, ACS 5-year estimate.

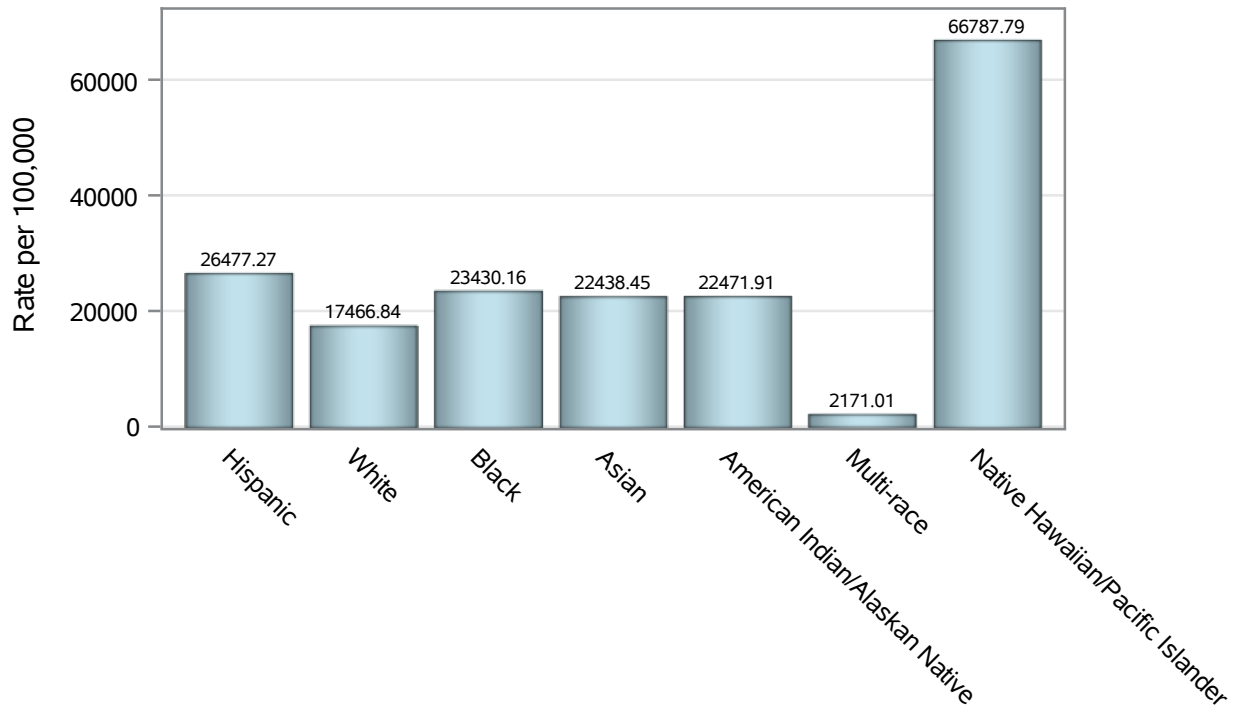
Note2: Rates for categories with fewer than 12 cases are suppressed due to high relative standard error.

Note3: Hospitalizations are regardless of deceased status; Deaths are regardless of hospitalization status

**Investigations are ongoing; data are subject to change.
Reporting through 31OCT2022**

North Las Vegas zip codes include 89030, 89031, 89032, 89033, 89036, 89081, 89084, 89085, 89086, 89087.

Case Race/Ethnicity Rates in North Las Vegas

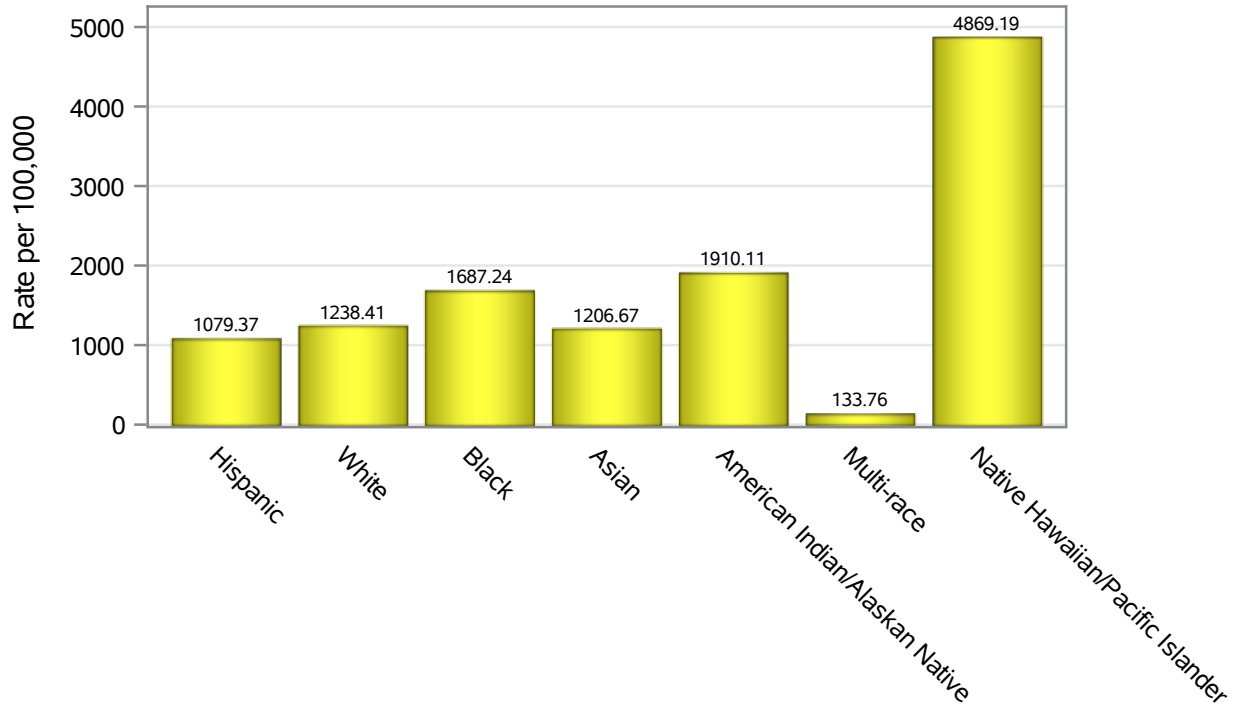


Investigations are ongoing; data are subject to change.

Reporting through 31OCT2022

North Las Vegas zip codes include 89030, 89031, 89032, 89033, 89036, 89081, 89084, 89085, 89086, 89087.

Hospitalization Race/Ethnicity Rates in North Las Vegas

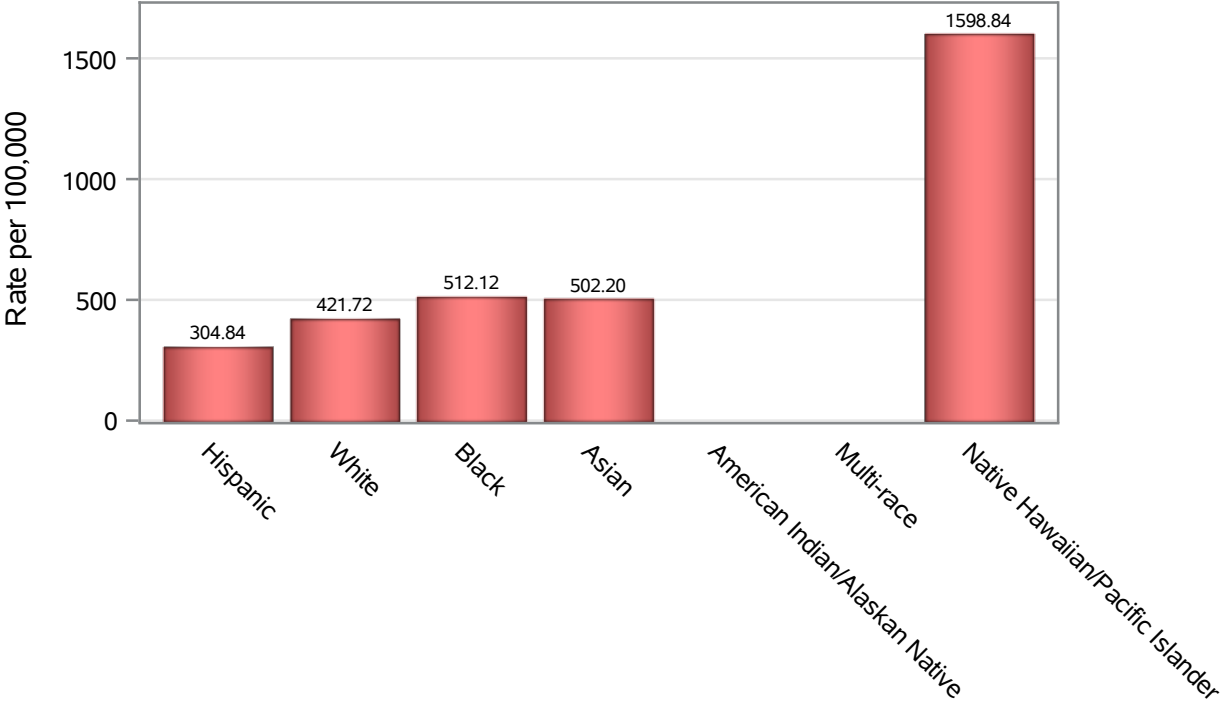


Investigations are ongoing; data are subject to change.

Reporting through 31OCT2022

North Las Vegas zip codes include 89030, 89031, 89032, 89033, 89036, 89081, 89084, 89085, 89086, 89087.

Death Race/Ethnicity Rates in North Las Vegas



Investigations are ongoing; data are subject to change.
Reporting through 31OCT2022

North Las Vegas zip codes include 89030, 89031, 89032, 89033, 89036, 89081, 89084, 89085, 89086, 89087.

Table 6: Race/Ethnicity and COVID19 in North Las Vegas

Case Status	Race Ethnicity Categories	N	%	Population	Rate per 100,000
Cases	Hispanic	25536	38.9	96,445	26477
	White	11100	16.9	63,549	17467
	Black	11026	16.8	47,059	23430
	Asian	3217	4.9	14,337	22438
	American Indian/Alaskan Native	200	0.3	890	22472
	Multi-race	211	0.3	9,719	2171.0
	Native Hawaiian/Pacific Islander	919	1.4	1,376	66788
	Unknown	13514	20.6	.	.
Hospitalizations	Hispanic	1041	34.1	96,445	1079.4
	White	787	25.8	63,549	1238.4
	Black	794	26.0	47,059	1687.2
	Asian	173	5.7	14,337	1206.7
	American Indian/Alaskan Native	17	0.6	890	1910.1
	Multi-race	13	0.4	9,719	133.76
	Native Hawaiian/Pacific Islander	67	2.2	1,376	4869.2
	Unknown	159	5.2	.	.
Deaths	Hispanic	294	32.3	96,445	304.84
	White	268	29.5	63,549	421.72
	Black	241	26.5	47,059	512.12
	Asian	72	7.9	14,337	502.20
	American Indian/Alaskan Native	6	0.7	890	.
	Multi-race	7	0.8	9,719	.
	Native Hawaiian/Pacific Islander	22	2.4	1,376	1598.8

Note1: Population data source for calculating rate estimates: U.S. Census Bureau, ACS 5-year estimate.

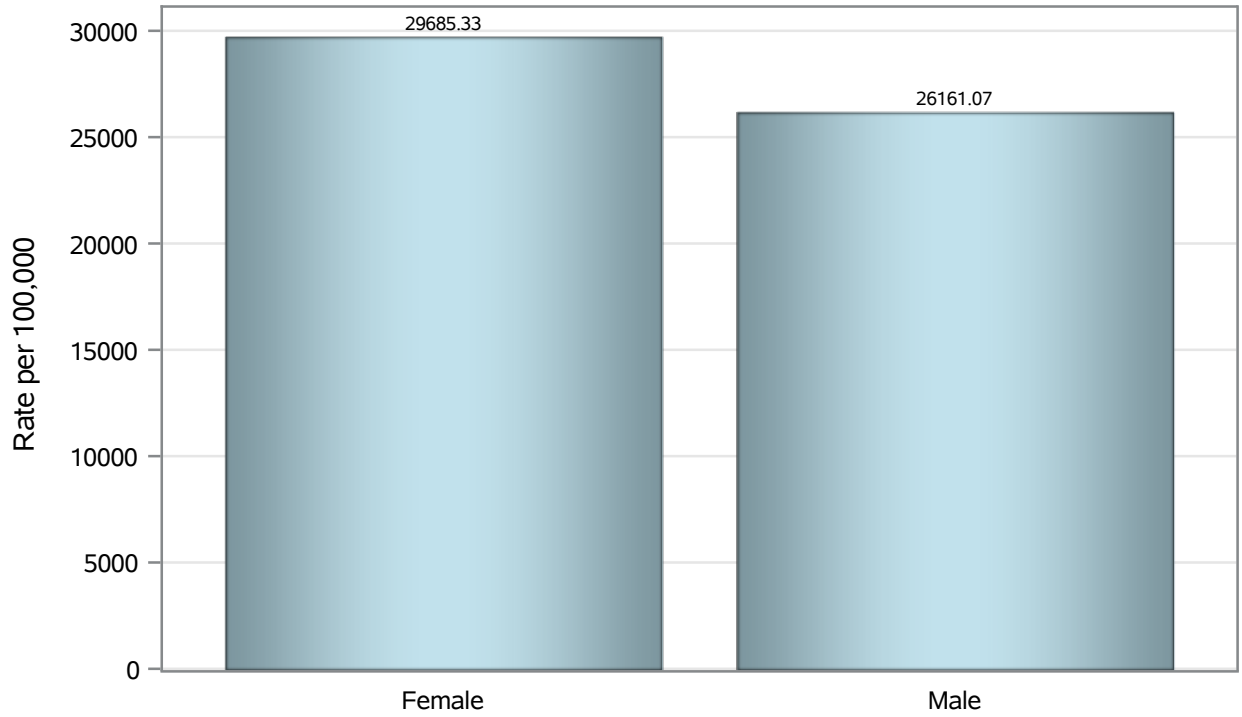
Note2: Rates for categories with fewer than 12 cases are suppressed due to high relative standard error.

Note3: Hospitalizations are regardless of deceased status; Deaths are regardless of hospitalization status

**Investigations are ongoing; data are subject to change.
Reporting through 31OCT2022**

North Las Vegas zip codes include 89030, 89031, 89032, 89033, 89036, 89081, 89084, 89085, 89086, 89087.

Case Birth Sex Rates in North Las Vegas

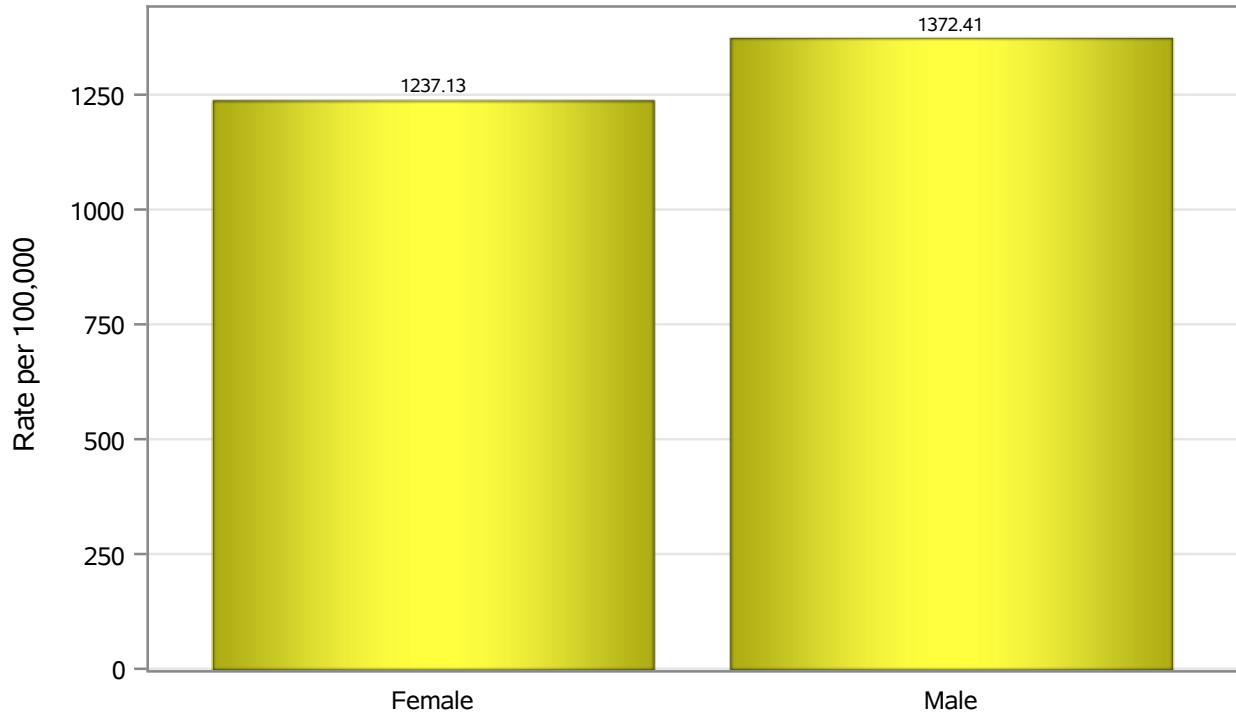


Investigations are ongoing; data are subject to change.

Reporting through 31OCT2022

North Las Vegas zip codes include 89030, 89031, 89032, 89033, 89036, 89081, 89084, 89085, 89086, 89087.

Hospitalization Birth Sex Rates in North Las Vegas

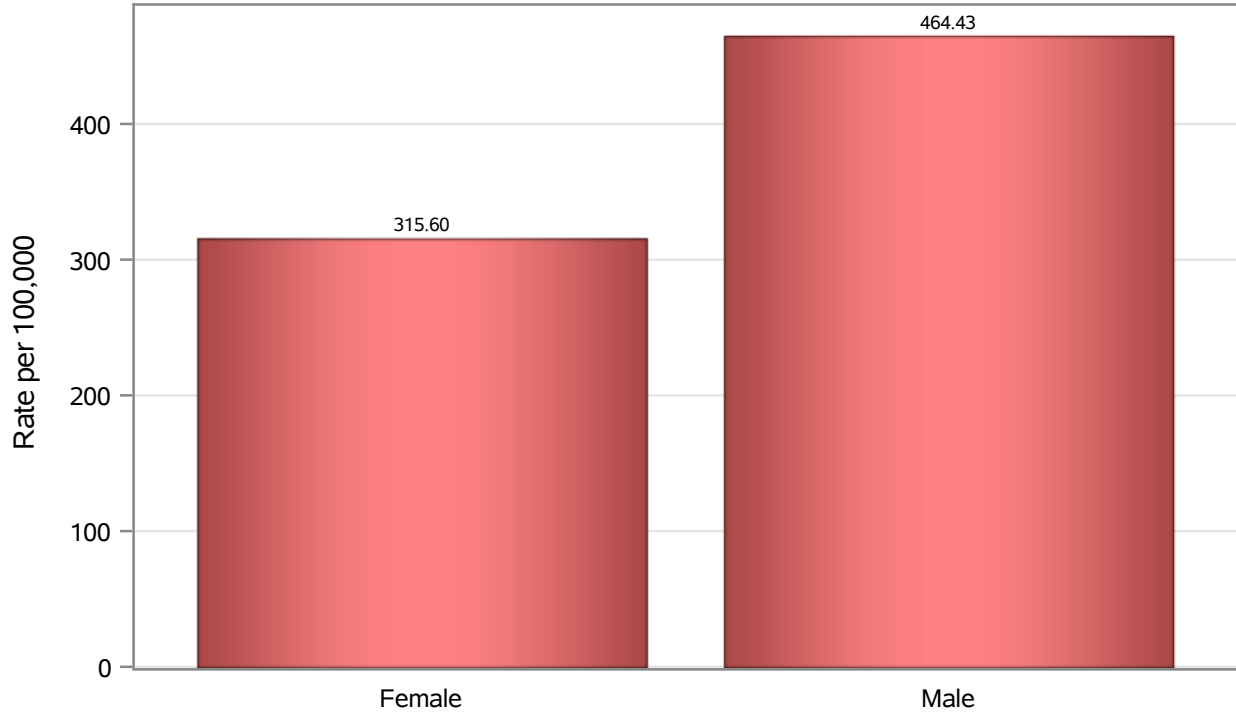


Investigations are ongoing; data are subject to change.

Reporting through 31OCT2022

North Las Vegas zip codes include 89030, 89031, 89032, 89033, 89036, 89081, 89084, 89085, 89086, 89087.

Death Birth Sex Rates in North Las Vegas



Investigations are ongoing; data are subject to change.

Reporting through 31OCT2022

North Las Vegas zip codes include 89030, 89031, 89032, 89033, 89036, 89081, 89084, 89085, 89086, 89087.

Table 7: Birth Sex and COVID19 in North Las Vegas

Case Status	Birth Sex Categories	N	%	Population	Rate per 100,000
Cases	Female	35273	53.7	118823	29685
	Male	30080	45.8	114980	26161
	Unknown	370	0.6	.	.
Hospitalizations	Female	1470	48.2	118823	1237.1
	Male	1578	51.7	114980	1372.4
	Unknown	3	0.1	.	.
Deaths	Female	375	41.2	118823	315.60
	Male	534	58.7	114980	464.43
	Unknown	1	0.1	.	.

Note1: Population data source for calculating rate estimates: U.S. Census Bureau, ACS 5-year estimate.

Note2: Rates for categories with fewer than 12 cases are suppressed due to high relative standard error.

Note3: Hospitalizations are regardless of deceased status; Deaths are regardless of hospitalization status

**Investigations are ongoing; data are subject to change.
Reporting through 31OCT2022**

North Las Vegas zip codes include 89030, 89031, 89032, 89033, 89036, 89081, 89084, 89085, 89086, 89087.