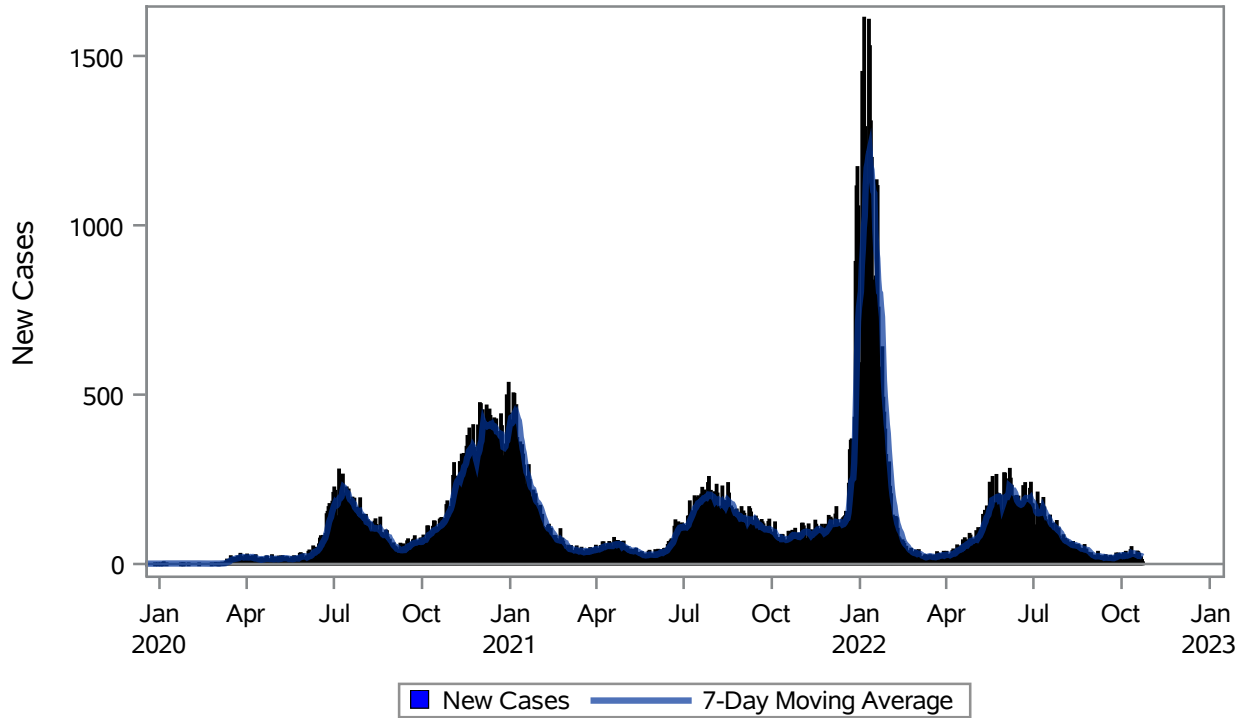


COVID19 Cases for Henderson, 7-Day Moving Average



Investigations are ongoing; data are subject to change.

Reporting through 24OCT2022

Henderson zip codes include 89002, 89011, 89012, 89014, 89015, 89044, 89052, 89074, 89119, 89120, 89122, 89123, 89124, 89183.

Table 1: New COVID19 Cases and 7-Day Moving Average in Henderson, Previous Two Weeks

Date (Daily)	New Cases	7-Day Moving Average
11OCT2022	49	31.86
12OCT2022	23	30.14
13OCT2022	26	30.29
14OCT2022	25	31.00
15OCT2022	15	29.29
16OCT2022	16	27.71
17OCT2022	36	27.14
18OCT2022	34	25.00
19OCT2022	29	25.86
20OCT2022	15	24.29
21OCT2022	19	23.43
22OCT2022	11	22.86

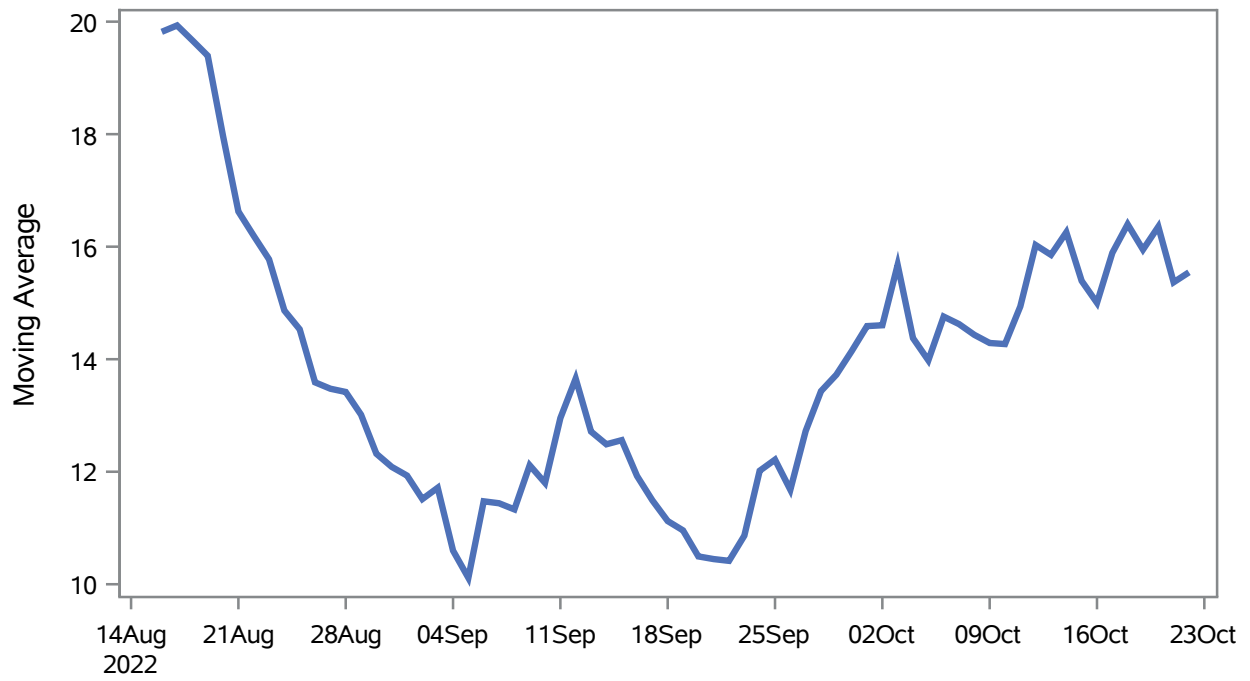
Note1: Event Date is calculated as follows based on completed information:
1) Disease onset date 2) Disease diagnosis date 3) Lab result collection date 4) Report date to SNHD.

Investigations are ongoing; data are subject to change.

Reporting through 24OCT2022

Henderson zip codes include 89002, 89011, 89012, 89014, 89015, 89044, 89052, 89074, 89119, 89120, 89122, 89123, 89124, 89183.

Percent of People Receiving COVID-19 Viral Tests Who Have Positive Results in Henderson



Investigations are ongoing; data are subject to change.

Reporting through 24OCT2022

Henderson zip codes include 89002, 89011, 89012, 89014, 89015, 89044, 89052, 89074, 89119, 89120, 89122, 89123, 89124, 89183.

Table 2: Percent of People Receiving COVID-19 Viral Tests Who Have Positive Results in Henderson

Collection Date	Positive	Negative	Equivocal	Total	% Positivity	7-Day Moving Average
08OCT2022	20	91		111	18.02	14.4
09OCT2022	15	96		111	13.51	14.3
10OCT2022	26	142		168	15.48	14.3
11OCT2022	21	133		154	13.64	14.9
12OCT2022	26	111		137	18.98	16.0
13OCT2022	29	142		171	16.96	15.9
14OCT2022	21	101		122	17.21	16.3
15OCT2022	14	103		117	11.97	15.4
16OCT2022	11	91		102	10.78	15.0
17OCT2022	41	148		189	21.69	15.9
18OCT2022	27	130		157	17.20	16.4
19OCT2022	25	133		158	15.82	15.9
20OCT2022	21	85		106	19.81	16.4
21OCT2022	14	122		136	10.29	15.4
22OCT2022	14	92		106	13.21	15.5

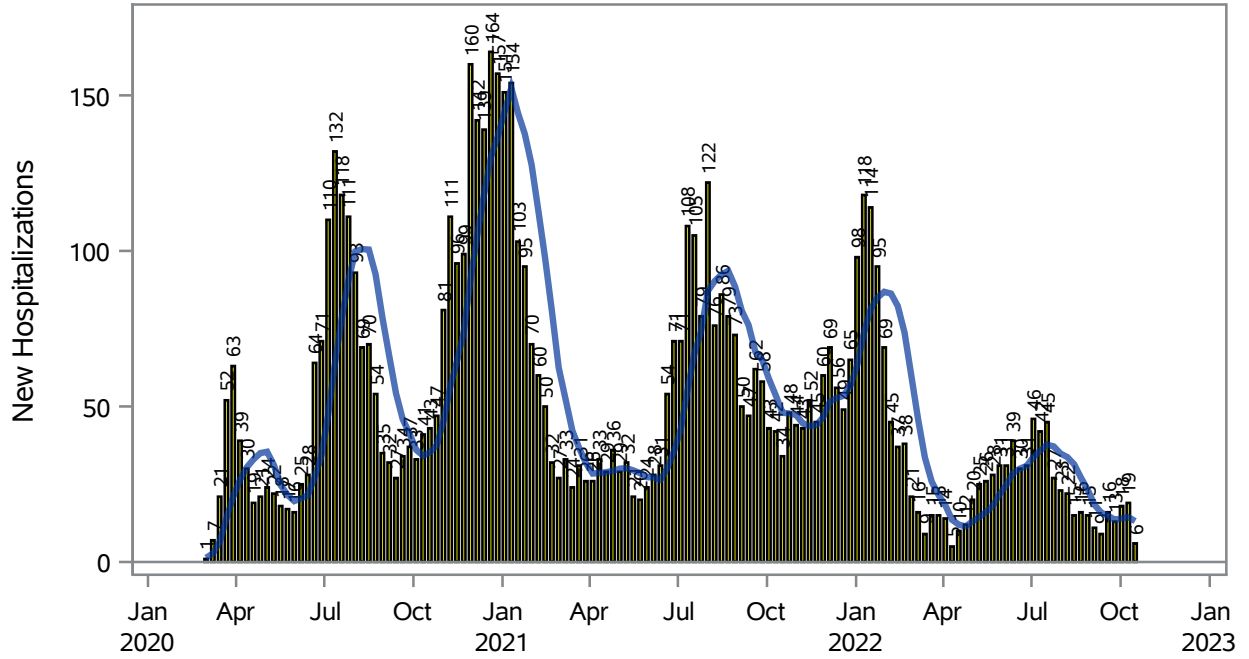
Note: Testing Data includes a 3 day delay

Investigations are ongoing; data are subject to change.

Reporting through 24OCT2022

Henderson zip codes include 89002, 89011, 89012, 89014, 89015, 89044, 89052, 89074, 89119, 89120, 89122, 89123, 89124, 89183.

COVID19 Hospitalizations for Henderson, 7-Day Moving Average



■ New Hospitalizations
 — 7-Day Moving Average

Investigations are ongoing; data are subject to change.

Reporting through 24OCT2022

Henderson zip codes include 89002, 89011, 89012, 89014, 89015, 89044, 89052, 89074, 89119, 89120, 89122, 89123, 89124, 89183.

Table 3: New COVID19-Related Hospitalizations and 7-Day Moving Average in Henderson, previous month

Week	Hospitalizations	7-Day Moving Average
25SEP2022	13	13.6
02OCT2022	18	14.0
09OCT2022	19	14.4
16OCT2022	6	13.1

Note1: Admission Date is calculated as follows based on completed information:
A) COVID19 Case is hospitalized B) COVID19 Case has a hospital admission date.

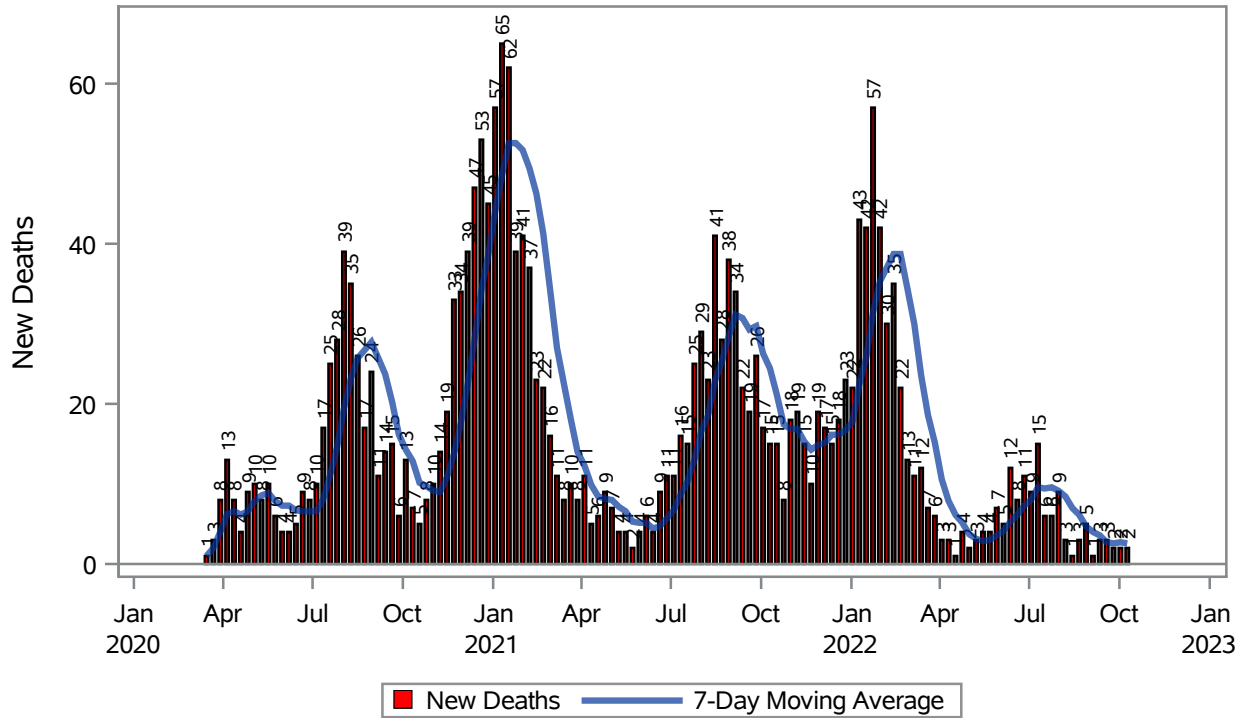
If admission date is missing, then the following is substituted temporarily, in order:
1) Disease onset date 2) Disease diagnosis date 3) Lab result collection date 4) Report date to SNHD.

Investigations are ongoing; data are subject to change.

Reporting through 24OCT2022

Henderson zip codes include 89002, 89011, 89012, 89014, 89015, 89044, 89052, 89074, 89119, 89120, 89122, 89123, 89124, 89183.

COVID19 Deaths for Henderson, 7-Day Moving Average



Investigations are ongoing; data are subject to change.

Reporting through 24OCT2022

Henderson zip codes include 89002, 89011, 89012, 89014, 89015, 89044, 89052, 89074, 89119, 89120, 89122, 89123, 89124, 89183.

Table 4: New COVID19-Related Deaths and 7-Day Moving Average in Henderson, Previous Month

Week	Deaths	7-Day Moving Average
25SEP2022	2	2.57
02OCT2022	2	2.71
09OCT2022	2	2.57

Note1: Date of Death is calculated as follows based on completed information:
A) COVID19 Case is reported as deceased B) COVID19 Case has a reported date of death.

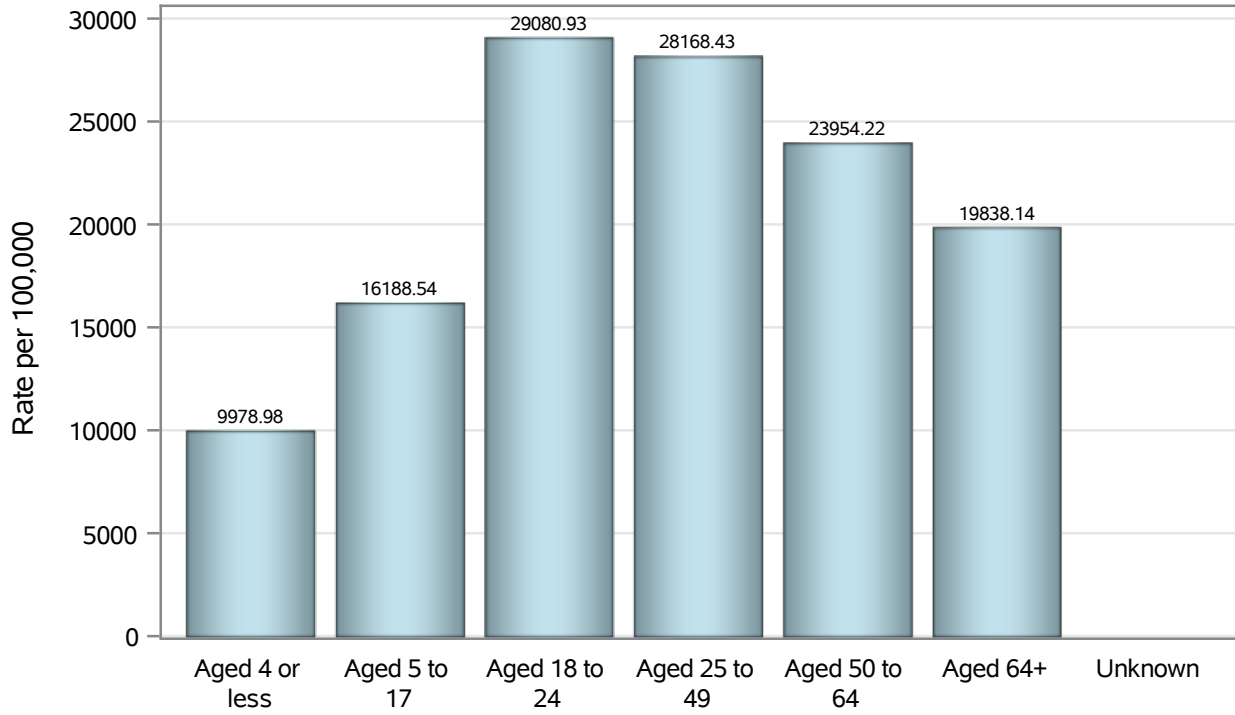
If date of death is missing, then the following is substituted temporarily, in order:
1) Disease onset date 2) Disease diagnosis date
3) Lab result collection date 4) Report date to SNHD.

Investigations are ongoing; data are subject to change.

Reporting through 24OCT2022

Henderson zip codes include 89002, 89011, 89012, 89014, 89015, 89044, 89052, 89074, 89119, 89120, 89122, 89123, 89124, 89183.

Case Age Rates in Henderson

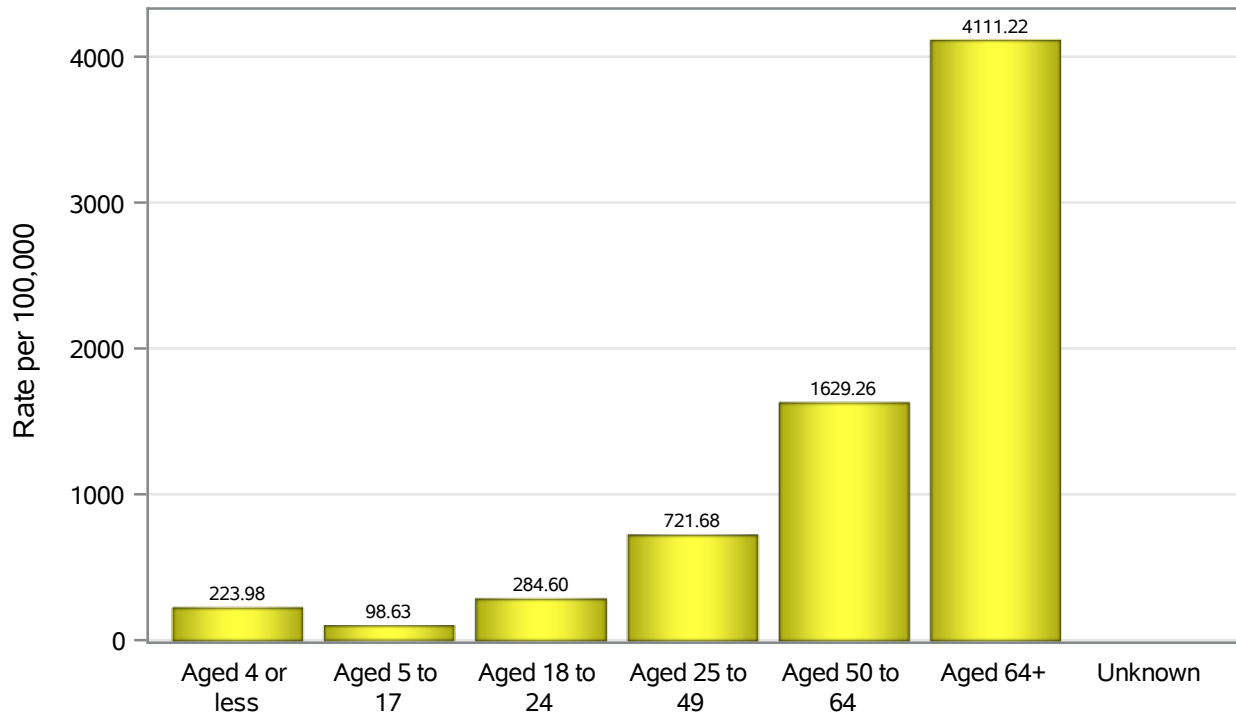


Investigations are ongoing; data are subject to change.

Reporting through 24OCT2022

Henderson zip codes include 89002, 89011, 89012, 89014, 89015, 89044, 89052, 89074, 89119, 89120, 89122, 89123, 89124, 89183.

Hospitalization Age Rates in Henderson

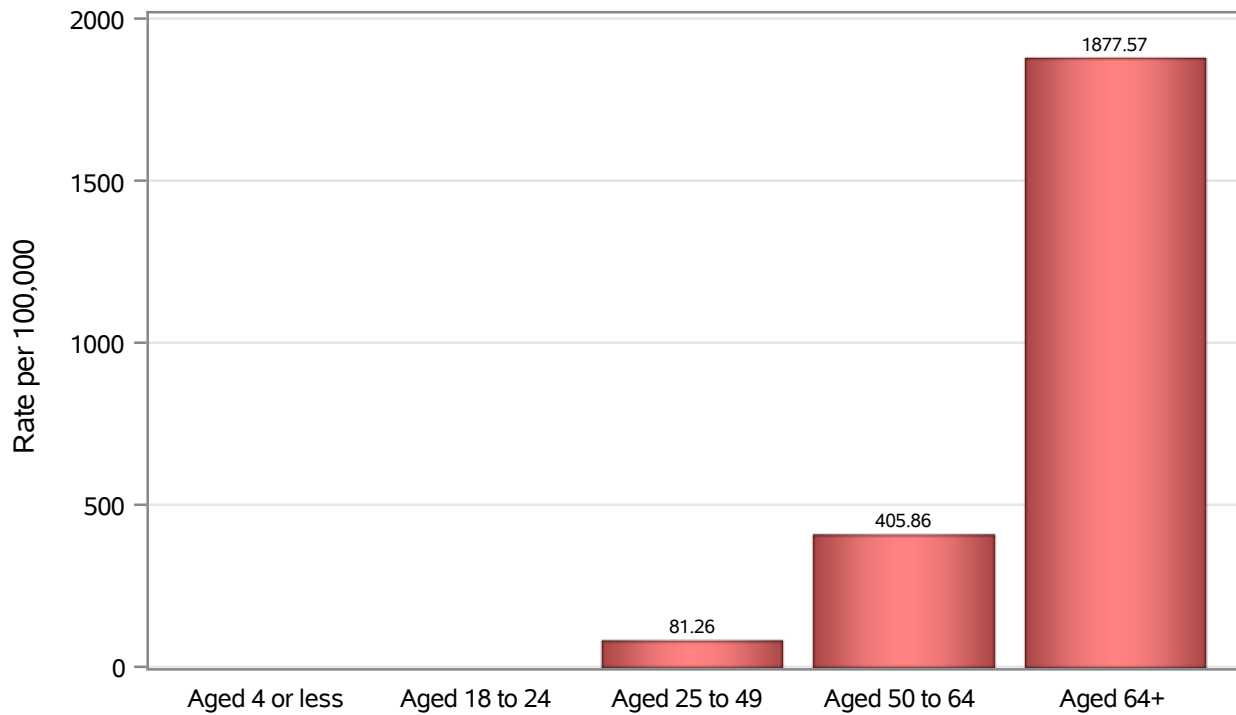


Investigations are ongoing; data are subject to change.

Reporting through 24OCT2022

Henderson zip codes include 89002, 89011, 89012, 89014, 89015, 89044, 89052, 89074, 89119, 89120, 89122, 89123, 89124, 89183.

Death Age Rates in Henderson



Investigations are ongoing; data are subject to change.

Reporting through 24OCT2022

Henderson zip codes include 89002, 89011, 89012, 89014, 89015, 89044, 89052, 89074, 89119, 89120, 89122, 89123, 89124, 89183.

Table 5: Age and COVID19 in Henderson

Case Status	Age Categories	N	%	Population	Rate per 100,000
Cases	Aged 4 or less	2896	2.3	29,021	9979.0
	Aged 5 to 17	13295	10.8	82,126	16189
	Aged 18 to 24	12875	10.4	44,273	29081
	Aged 25 to 49	52693	42.6	187064	28168
	Aged 50 to 64	24612	19.9	102746	23954
	Aged 64+	17159	13.9	86,495	19838
	Unknown	24	0.0	.	.
Hospitalizations	Aged 4 or less	65	0.9	29,021	223.98
	Aged 5 to 17	81	1.2	82,126	98.63
	Aged 18 to 24	126	1.8	44,273	284.60
	Aged 25 to 49	1350	19.7	187064	721.68
	Aged 50 to 64	1674	24.4	102746	1629.3
	Aged 64+	3556	51.9	86,495	4111.2
	Unknown	1	0.0	.	.
Deaths	Aged 4 or less	1	0.0	29,021	.
	Aged 18 to 24	3	0.1	44,273	.
	Aged 25 to 49	152	6.9	187064	81.26
	Aged 50 to 64	417	19.0	102746	405.86
	Aged 64+	1624	73.9	86,495	1877.6

Note1: Population data source for calculating rate estimates: U.S. Census Bureau, ACS 5-year estimate.

Note2: Rates for categories with fewer than 12 cases are suppressed due to high relative standard error.

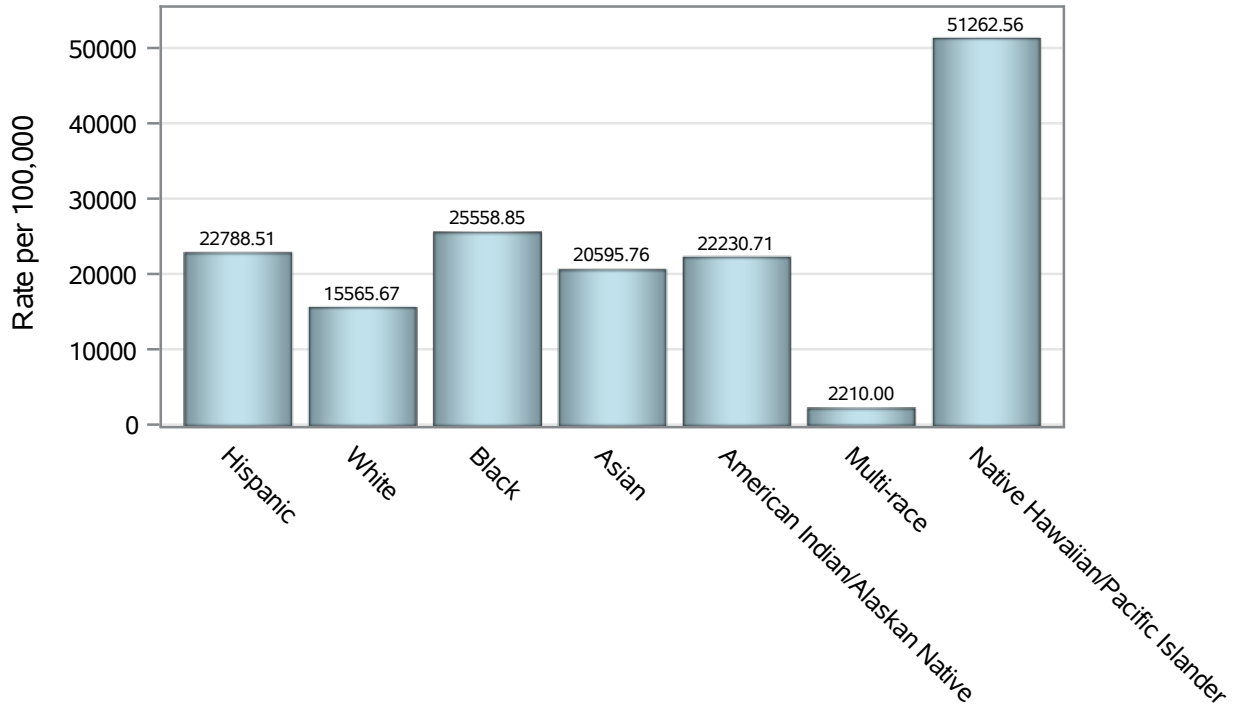
Note3: Hospitalizations are regardless of deceased status; Deaths are regardless of hospitalization status

Investigations are ongoing; data are subject to change.

Reporting through 24OCT2022

Henderson zip codes include 89002, 89011, 89012, 89014, 89015, 89044, 89052, 89074, 89119, 89120, 89122, 89123, 89124, 89183.

Case Race/Ethnicity Rates in Henderson

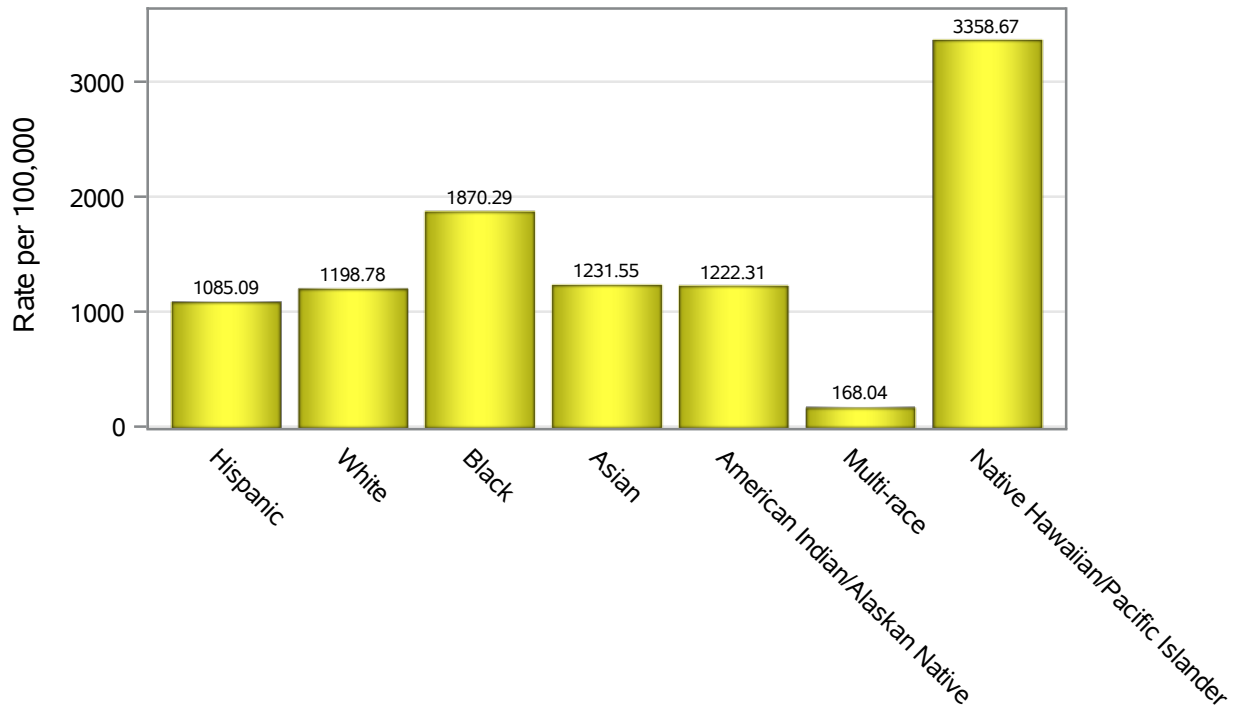


Investigations are ongoing; data are subject to change.

Reporting through 24OCT2022

Henderson zip codes include 89002, 89011, 89012, 89014, 89015, 89044, 89052, 89074, 89119, 89120, 89122, 89123, 89124, 89183.

Hospitalization Race/Ethnicity Rates in Henderson

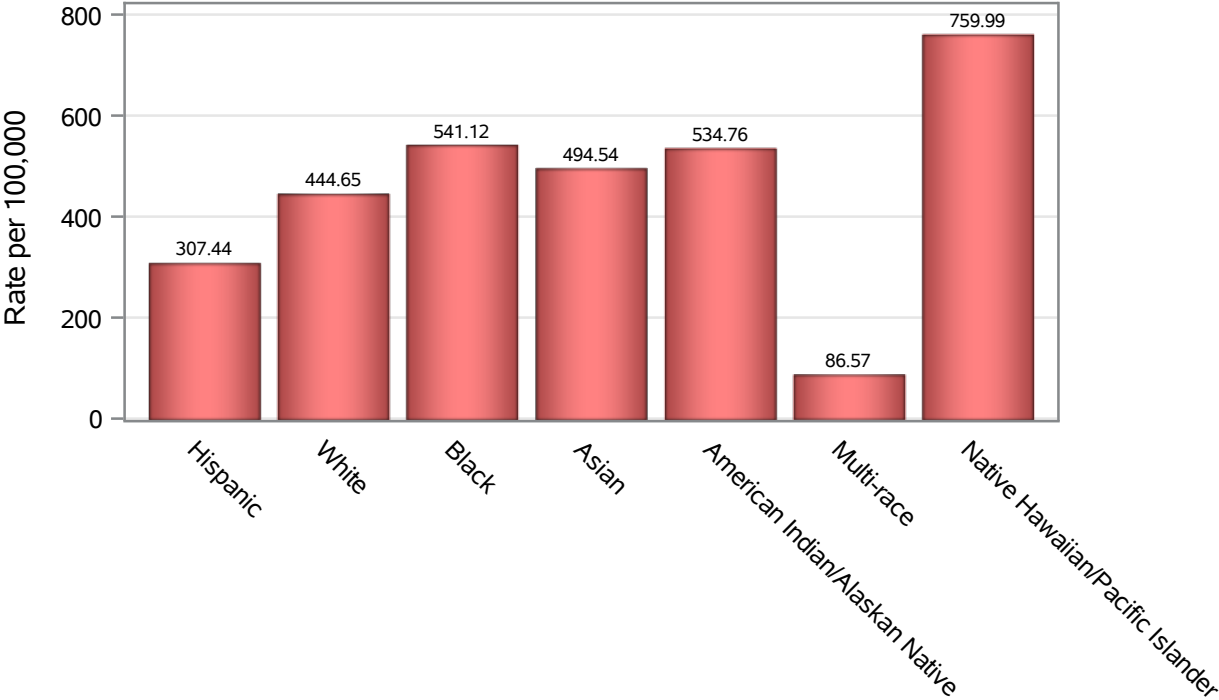


Investigations are ongoing; data are subject to change.

Reporting through 24OCT2022

Henderson zip codes include 89002, 89011, 89012, 89014, 89015, 89044, 89052, 89074, 89119, 89120, 89122, 89123, 89124, 89183.

Death Race/Ethnicity Rates in Henderson



Investigations are ongoing; data are subject to change.
Reporting through 24OCT2022

Henderson zip codes include 89002, 89011, 89012, 89014, 89015, 89044, 89052, 89074, 89119, 89120, 89122, 89123, 89124, 89183.

Table 6: Race/Ethnicity and COVID19 in Henderson

Case Status	Race Ethnicity Categories	N	%	Population	Rate per 100,000
Cases	Hispanic	27722	22.4	121649	22789
	White	45368	36.7	291462	15566
	Black	9730	7.9	38,069	25559
	Asian	10703	8.7	51,967	20596
	American Indian/Alaskan Native	582	0.5	2,618	22231
	Multi-race	434	0.4	19,638	2210.0
	Native Hawaiian/Pacific Islander	2091	1.7	4,079	51263
	Unknown	26924	21.8	.	.
Hospitalizations	Hispanic	1320	19.3	121649	1085.1
	White	3494	51.0	291462	1198.8
	Black	712	10.4	38,069	1870.3
	Asian	640	9.3	51,967	1231.6
	American Indian/Alaskan Native	32	0.5	2,618	1222.3
	Multi-race	33	0.5	19,638	168.04
	Native Hawaiian/Pacific Islander	137	2.0	4,079	3358.7
	Unknown	485	7.1	.	.
Deaths	Hispanic	374	17.0	121649	307.44
	White	1296	59.0	291462	444.65
	Black	206	9.4	38,069	541.12
	Asian	257	11.7	51,967	494.54
	American Indian/Alaskan Native	14	0.6	2,618	534.76
	Multi-race	17	0.8	19,638	86.57
	Native Hawaiian/Pacific Islander	31	1.4	4,079	759.99
	Unknown	2	0.1	.	.

Note1: Population data source for calculating rate estimates: U.S. Census Bureau, ACS 5-year estimate.

Note2: Rates for categories with fewer than 12 cases are suppressed due to high relative standard error.

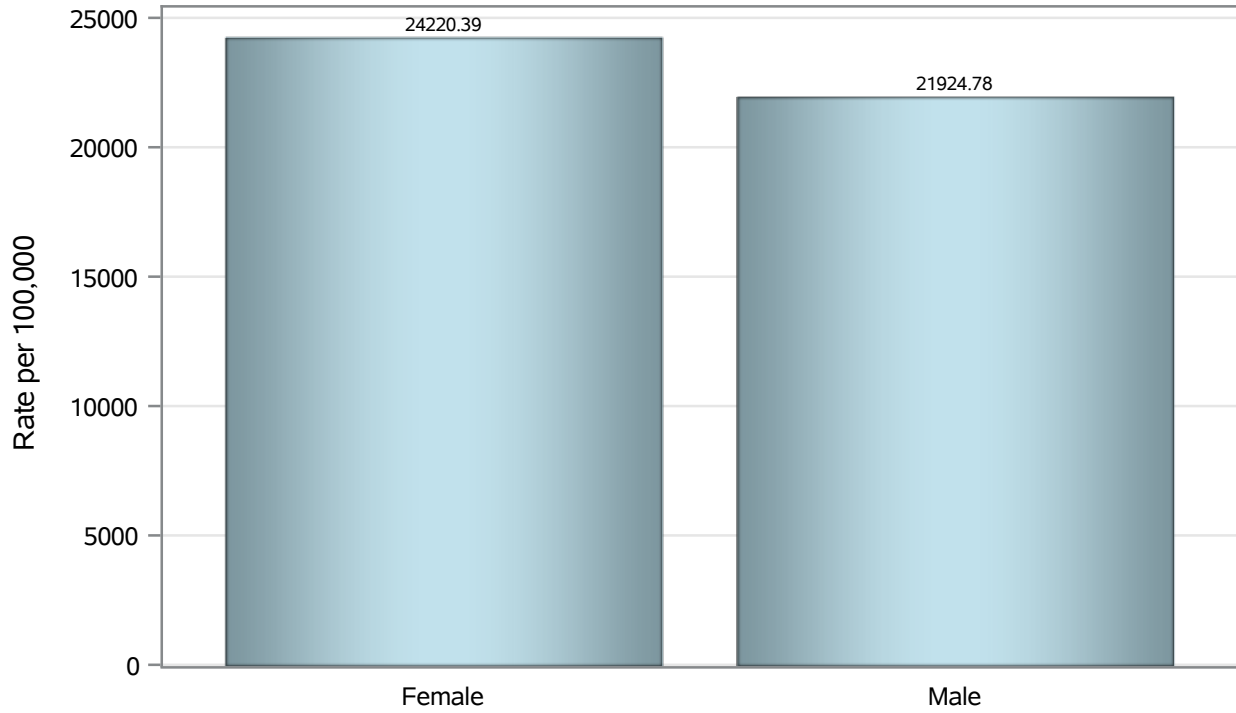
Note3: Hospitalizations are regardless of deceased status; Deaths are regardless of hospitalization status

Investigations are ongoing; data are subject to change.

Reporting through 24OCT2022

Henderson zip codes include 89002, 89011, 89012, 89014, 89015, 89044, 89052, 89074, 89119, 89120, 89122, 89123, 89124, 89183.

Case Birth Sex Rates in Henderson

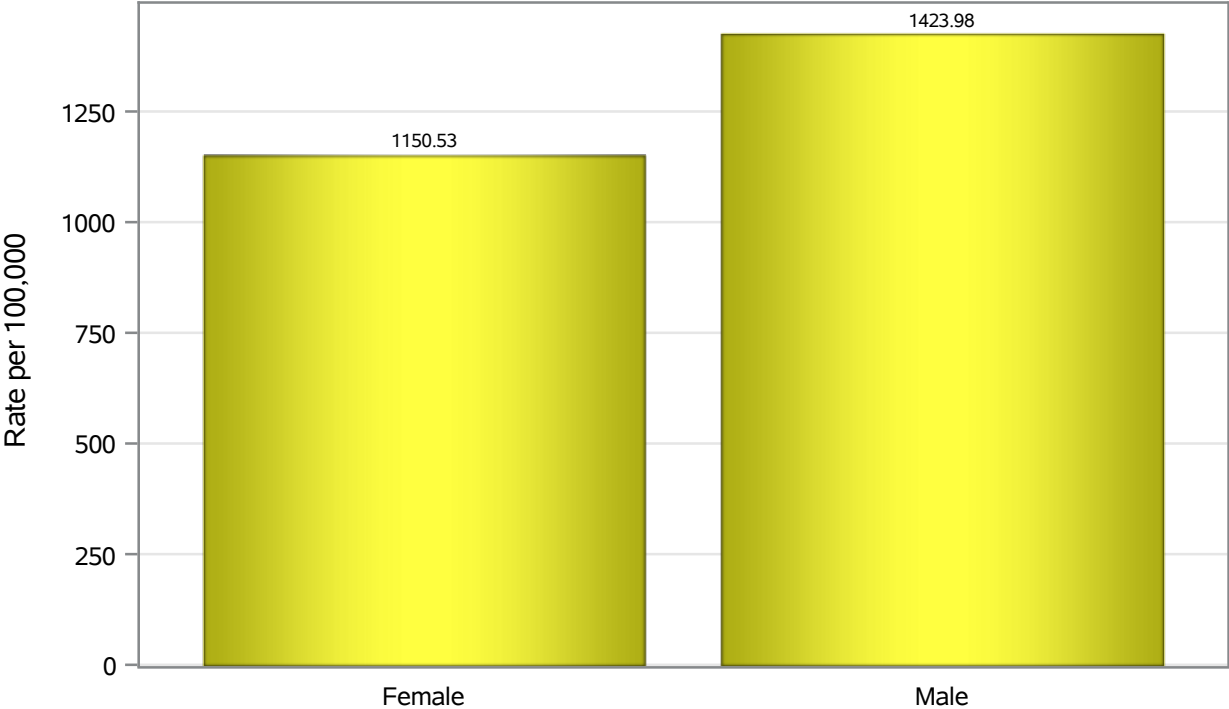


Investigations are ongoing; data are subject to change.

Reporting through 24OCT2022

Henderson zip codes include 89002, 89011, 89012, 89014, 89015, 89044, 89052, 89074, 89119, 89120, 89122, 89123, 89124, 89183.

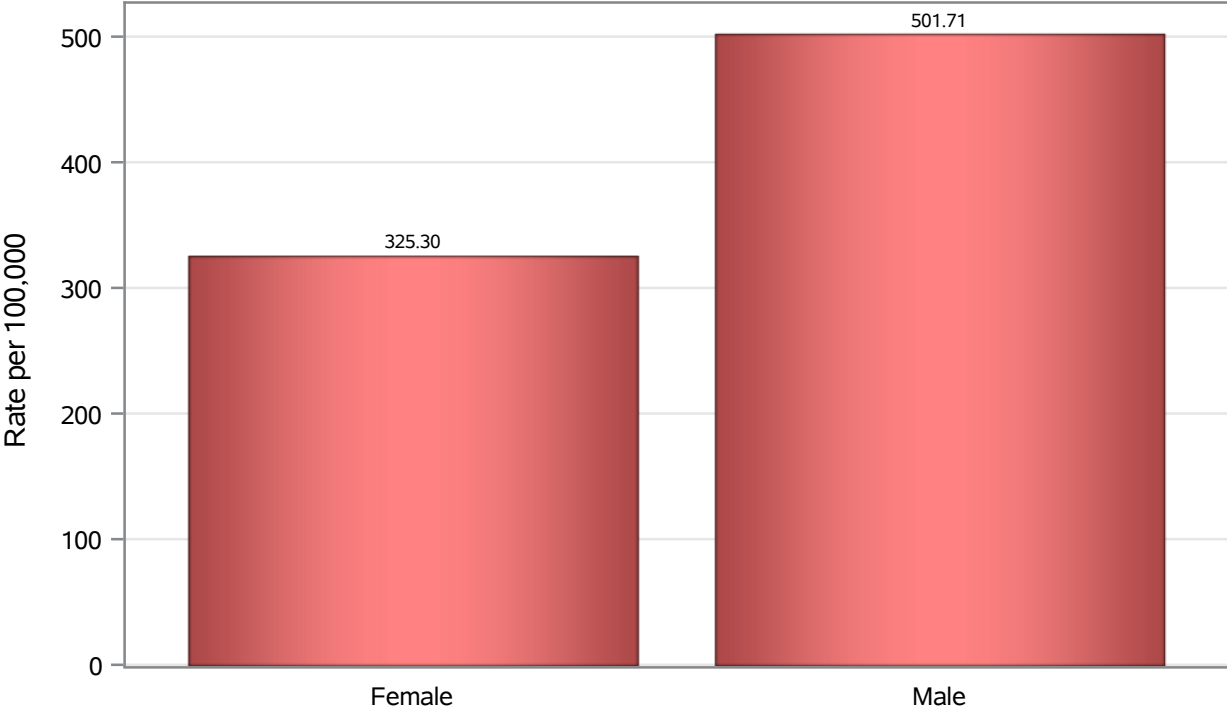
Hospitalization Birth Sex Rates in Henderson



Investigations are ongoing; data are subject to change.
Reporting through 24OCT2022

Henderson zip codes include 89002, 89011, 89012, 89014, 89015, 89044, 89052, 89074, 89119, 89120, 89122, 89123, 89124, 89183.

Death Birth Sex Rates in Henderson



Investigations are ongoing; data are subject to change.
Reporting through 24OCT2022

Henderson zip codes include 89002, 89011, 89012, 89014, 89015, 89044, 89052, 89074,
89119, 89120, 89122, 89123, 89124, 89183.

Table 7: Birth Sex and COVID19 in Henderson

Case Status	Birth Sex Categories	N	%	Population	Rate per 100,000
Cases	Female	64628	52.3	266833	24220
	Male	58077	47.0	264892	21925
	Unknown	849	0.7	.	.
Hospitalizations	Female	3070	44.8	266833	1150.5
	Male	3772	55.0	264892	1424.0
	Unknown	11	0.2	.	.
Deaths	Female	868	39.5	266833	325.30
	Male	1329	60.5	264892	501.71

Note1: Population data source for calculating rate estimates: U.S. Census Bureau, ACS 5-year estimate.

Note2: Rates for categories with fewer than 12 cases are suppressed due to high relative standard error.

Note3: Hospitalizations are regardless of deceased status; Deaths are regardless of hospitalization status

Investigations are ongoing; data are subject to change.

Reporting through 24OCT2022

Henderson zip codes include 89002, 89011, 89012, 89014, 89015, 89044, 89052, 89074, 89119, 89120, 89122, 89123, 89124, 89183.