

COVID-19 Trends

Clark County, Nevada

Document creation date: October 21, 2022

- **General notes:** This report uses surveillance data collected by the Southern Nevada Health District. Due to delays related to laboratory processing, reporting, and case investigations, data from the most recent days are less complete than data from older time points. For this reason, as of June 10, 2020 this report will not display data from the previous three days prior to the date that the report was created. As many case investigations are ongoing, all data presented in this report are considered preliminary and subject to change. Data regarding cases, hospitalizations, deaths, and labs were last updated October 21, 2022 at 12:00 AM, and data is reported up through October 17, 2022.
- **Cases:** Symptom onset date was used for aggregating cases. If symptom onset date was missing, the following dates were substituted in this order: diagnosis date, lab collection date, report date (date case was reported to SNHD), event creation date (date case was entered into TriSano, SNHD's surveillance system).
- **Hospitalizations:** Admission date reported the the Nevada Hospital Association was used for aggregating hospitalizations. One person could have more than one admissions.
- **Deaths:** Date of death was used for aggregating deaths. If date of death was missing, report date was used.
- For the "7-Day Average of Daily New Cases per 100K, by Age Group (Years)" graph and table, the population data source for calculating rate estimates was from Nevada State Demographer "2019 ASRHO Estimates and Projections Summary 2000 to 2038", 2020 projection, vintage 2019. Rates for individual age categories may be based on small numbers, which may give unstable estimates.
- All graphs in this report show data from approximately 60 days prior to the date of the report.
- All tables show data from the last 14 days before the current date, with the exception of the "Percent Change in Weekly Totals from Previous Week", which displays data from the previous eight completed weeks.
- For the "Percent of People Receiving COVID-19 PCR Tests Who Have Positive Results" graph, one person who has multiple specimens collected in one day is only reported once. If any test of that person is positive, that person counts as a positive result. If all tests of that individual are negative, that person counts as a negative result. Laboratory tests were included if they were a test assessing for the presence of SARS-CoV-2 viral RNA, for example PCR tests. Antibody and antigen tests were excluded.

COVID-19 Cases

Clark County, NV

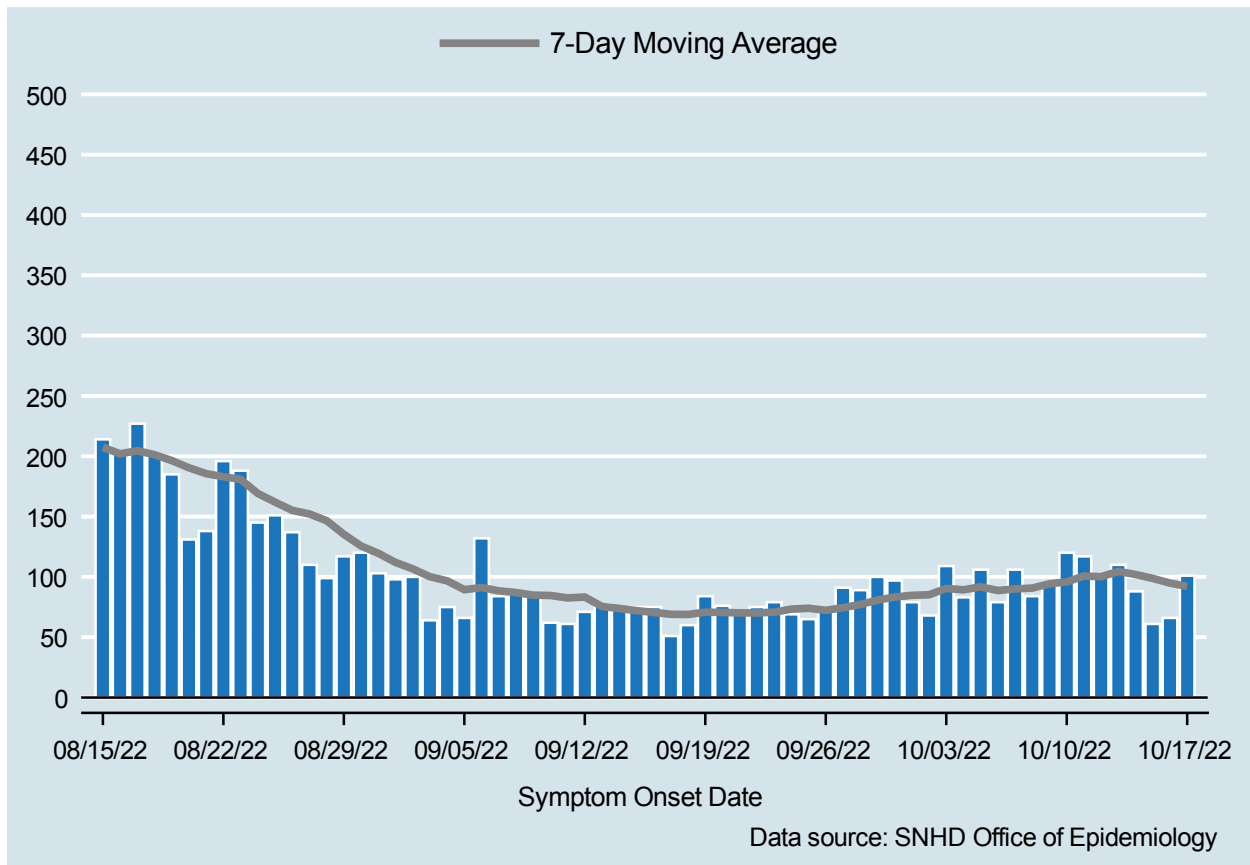


Table 1: COVID-19 Cases per Day, Clark County, NV

Date	Cases Per Day	7-Day Moving Average
OCT 04	83	89.3
OCT 05	106	91.7
OCT 06	79	88.7
OCT 07	106	90.0
OCT 08	84	90.7
OCT 09	93	94.3
OCT 10	120	95.9
OCT 11	117	100.7
OCT 12	102	100.1
OCT 13	110	104.6
OCT 14	88	102.0
OCT 15	61	98.7
OCT 16	66	94.9
OCT 17	101	92.1

COVID-19 Hospitalizations

Clark County, NV

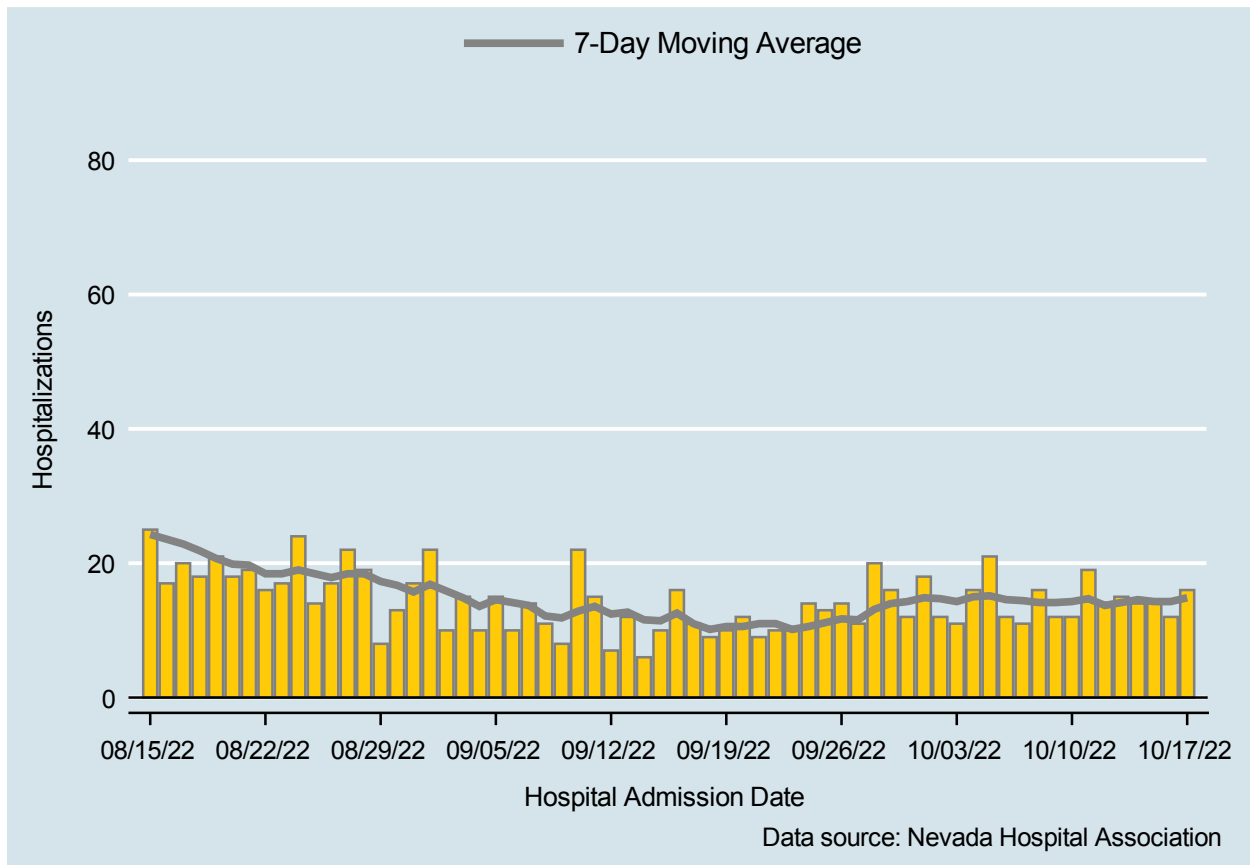


Table 2: COVID-19 Hospitalizations per Day, Clark County, NV

Date	Hospitalizations Per Day	7-Day Moving Average
OCT 04	16	15.0
OCT 05	21	15.1
OCT 06	12	14.6
OCT 07	11	14.4
OCT 08	16	14.1
OCT 09	12	14.1
OCT 10	12	14.3
OCT 11	19	14.7
OCT 12	14	13.7
OCT 13	15	14.1
OCT 14	14	14.6
OCT 15	14	14.3
OCT 16	12	14.3
OCT 17	16	14.9

Bed Occupancy of COVID-19 Hospitalizations

Clark County, NV

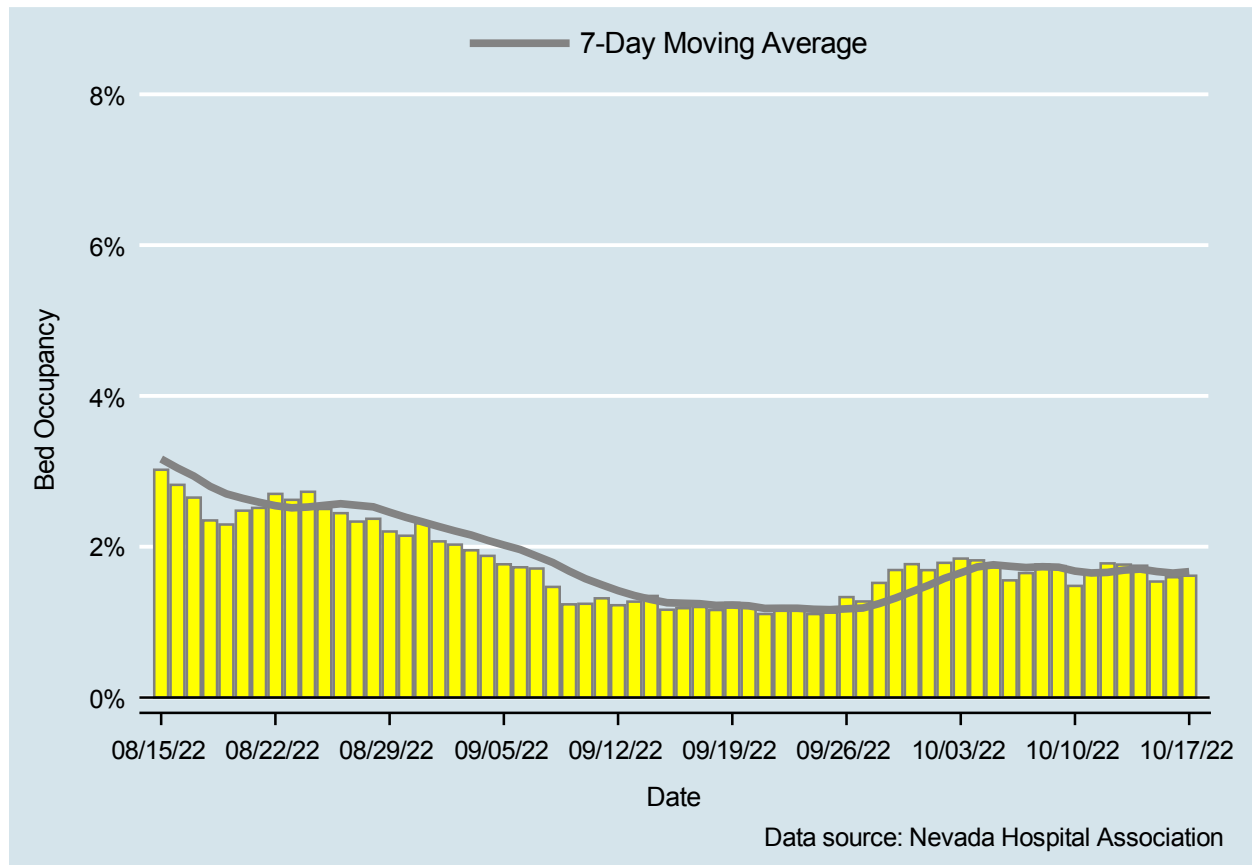


Table 3: Percent of Bed Occupancy per Day, Clark County, NV

Date	Bed Occupancy Per Day	7-Day Moving Average
OCT 04	1.82%	1.73%
OCT 05	1.73%	1.76%
OCT 06	1.55%	1.74%
OCT 07	1.65%	1.72%
OCT 08	1.76%	1.73%
OCT 09	1.74%	1.73%
OCT 10	1.48%	1.68%
OCT 11	1.65%	1.65%
OCT 12	1.78%	1.66%
OCT 13	1.76%	1.69%
OCT 14	1.75%	1.70%
OCT 15	1.54%	1.67%
OCT 16	1.60%	1.65%
OCT 17	1.62%	1.67%

COVID-19 Deaths

Clark County, NV

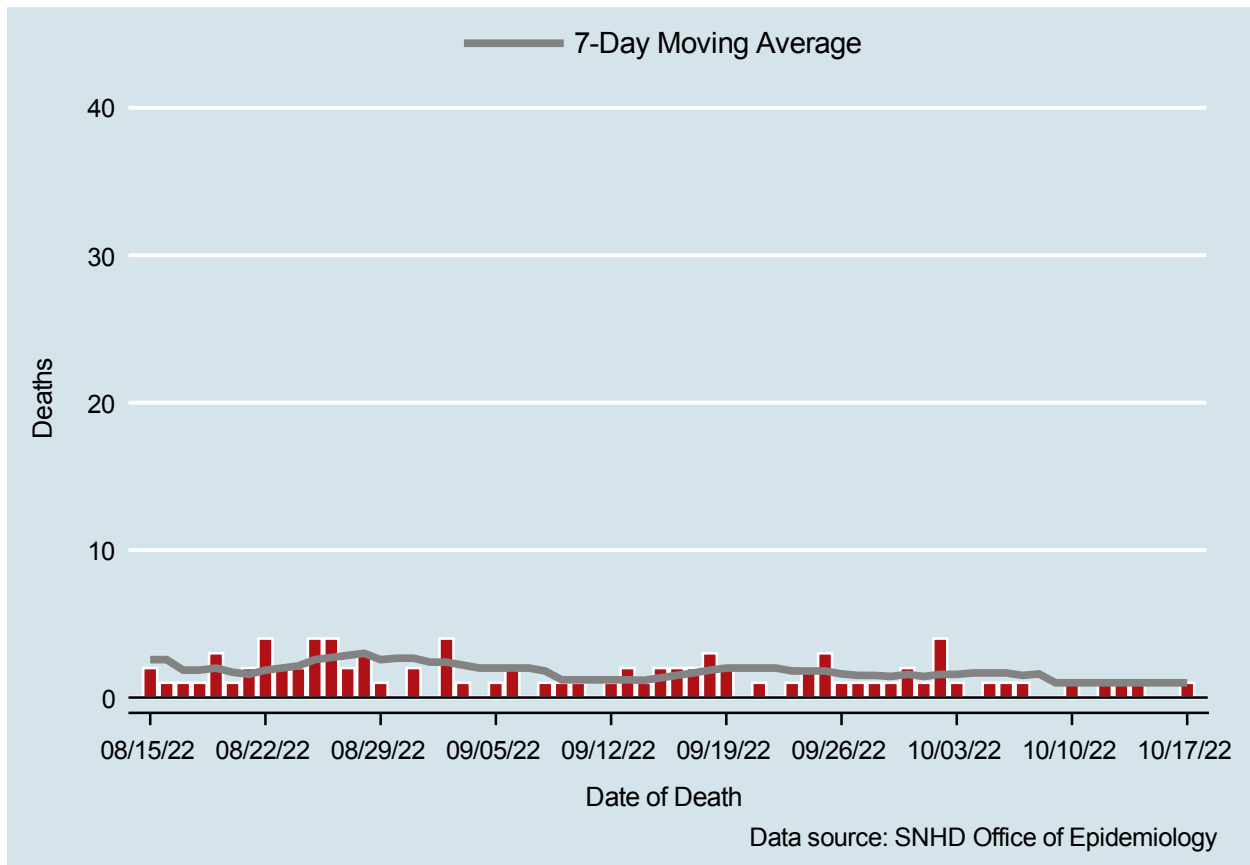


Table 4: COVID-19 Deaths per Day, Clark County, NV

Date	Deaths Per Day	7-Day Moving Average
OCT 04	.	1.7
OCT 05	1	1.7
OCT 06	1	1.7
OCT 07	1	1.5
OCT 08	.	1.6
OCT 09	.	1.0
OCT 10	1	1.0
OCT 11	.	1.0
OCT 12	1	1.0
OCT 13	1	1.0
OCT 14	1	1.0
OCT 15	.	1.0
OCT 16	.	1.0
OCT 17	1	1.0

7-Day Average of Daily New Cases per 100K, by Age Group (Years)

Clark County, NV

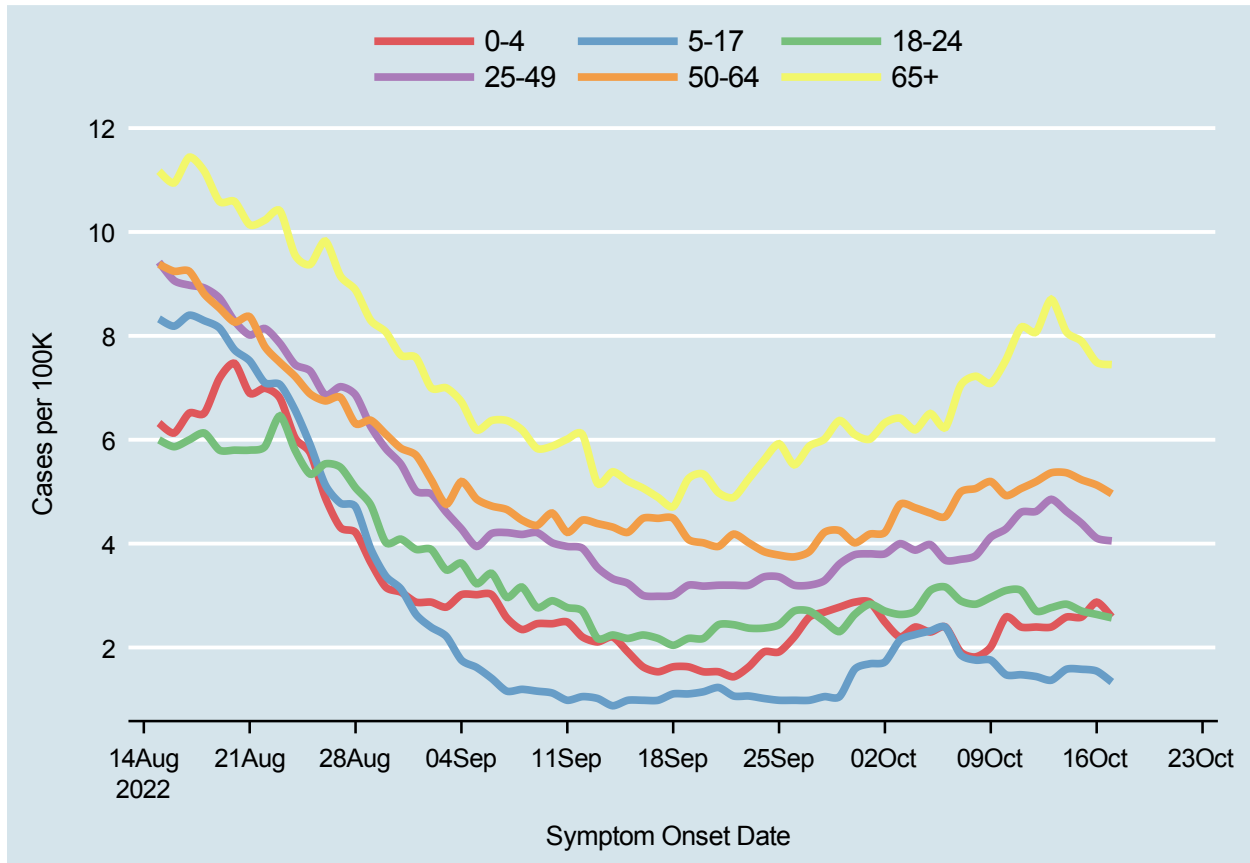
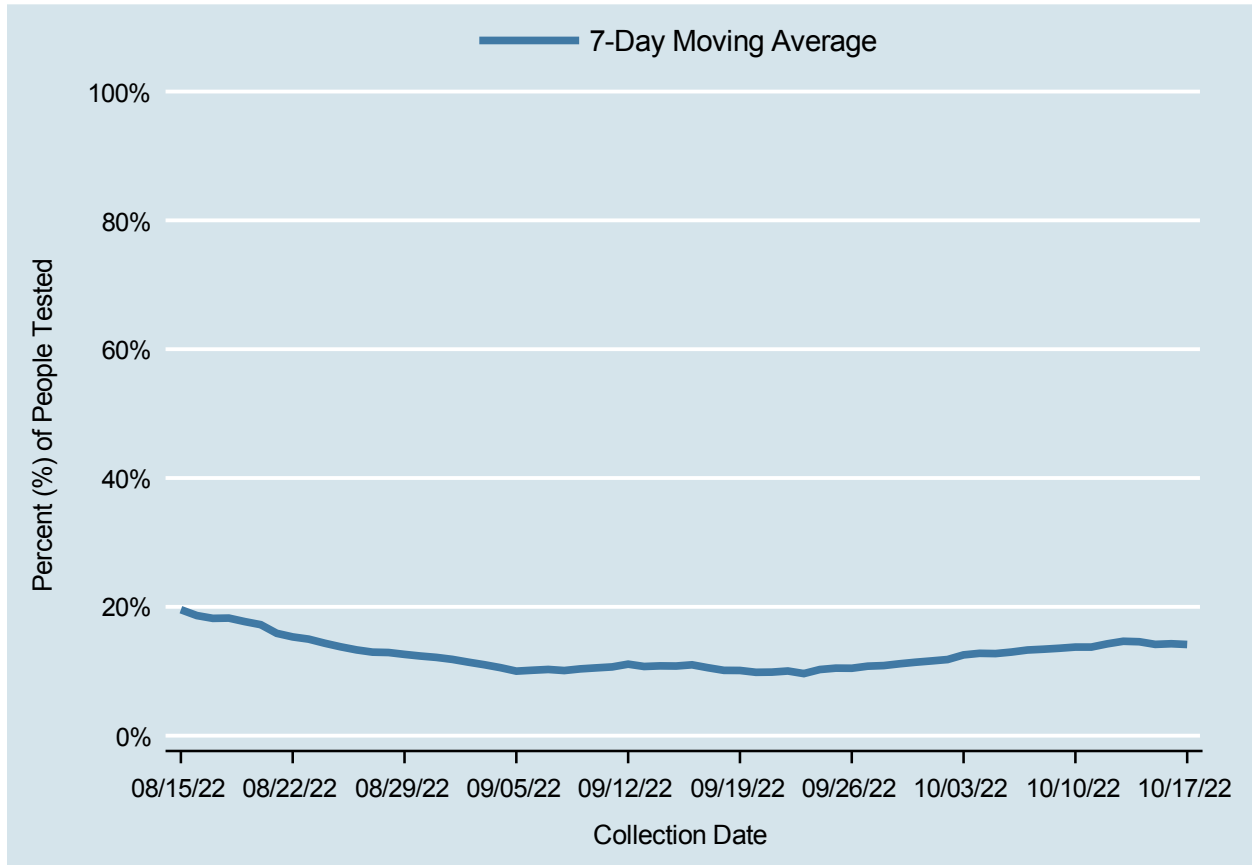


Table 5: 7-Day Average of Daily New Cases per 100K, by Age Group (Years)

Date	0-4	5-17	18-24	25-49	50-64	65+
OCT 04	2.4	2.2	2.7	3.9	4.7	6.2
OCT 05	2.3	2.3	3.1	4.0	4.6	6.5
OCT 06	2.4	2.4	3.2	3.7	4.5	6.2
OCT 07	1.9	1.9	2.9	3.7	5.0	7.0
OCT 08	1.8	1.8	2.8	3.8	5.1	7.2
OCT 09	2.0	1.8	3.0	4.1	5.2	7.1
OCT 10	2.6	1.5	3.1	4.3	4.9	7.5
OCT 11	2.4	1.5	3.1	4.6	5.1	8.2
OCT 12	2.4	1.4	2.7	4.6	5.2	8.1
OCT 13	2.4	1.4	2.8	4.9	5.4	8.7
OCT 14	2.6	1.6	2.8	4.6	5.4	8.1
OCT 15	2.6	1.6	2.7	4.4	5.2	7.9
OCT 16	2.9	1.5	2.6	4.1	5.1	7.5
OCT 17	2.6	1.3	2.6	4.1	5.0	7.4

Percent of People Receiving COVID-19 PCR Tests Who Have Positive Results

Clark County, NV



Report prepared by: Ying Zhang, PhD, MPH (Office of Epidemiology) and Lei Zhang, MS (Office of Informatics)