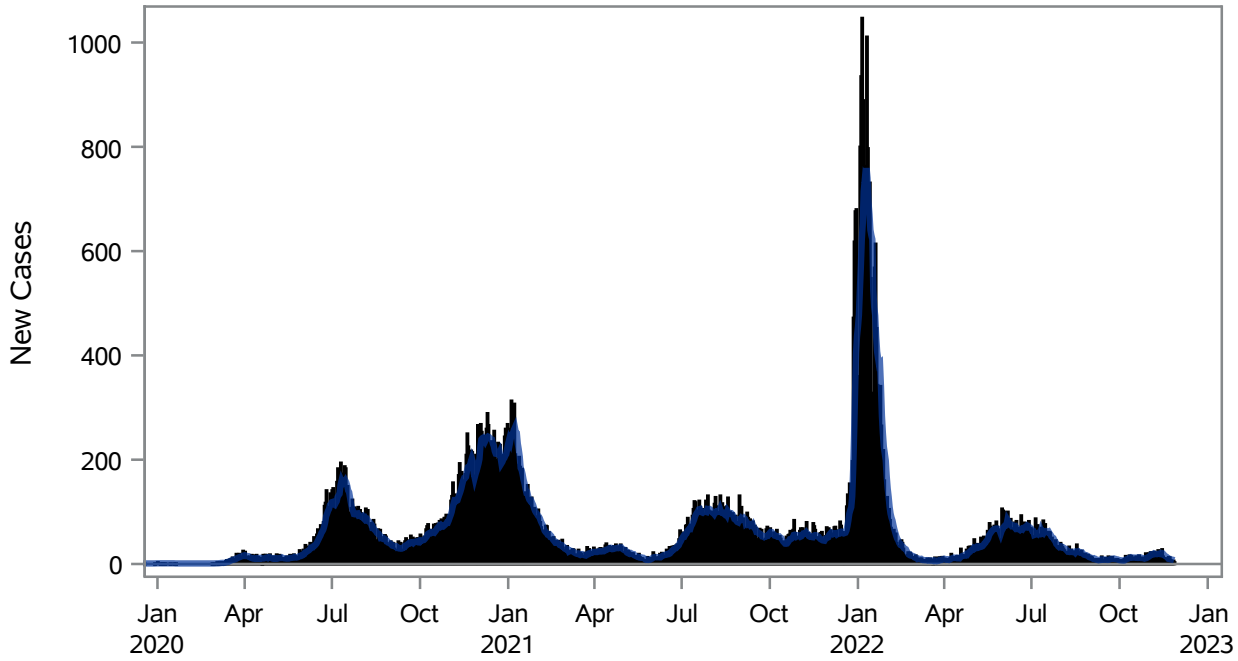


COVID19 Cases for North Las Vegas, 7-Day Moving Average



■ New Cases — 7-Day Moving Average

Investigations are ongoing; data are subject to change.

Reporting through 28NOV2022

North Las Vegas zip codes include 89030, 89031, 89032, 89033, 89036, 89081, 89084, 89085, 89086, 89087.

Table 1: New COVID19 Cases and 7-Day Moving Average in North Las Vegas, Previous Two Weeks

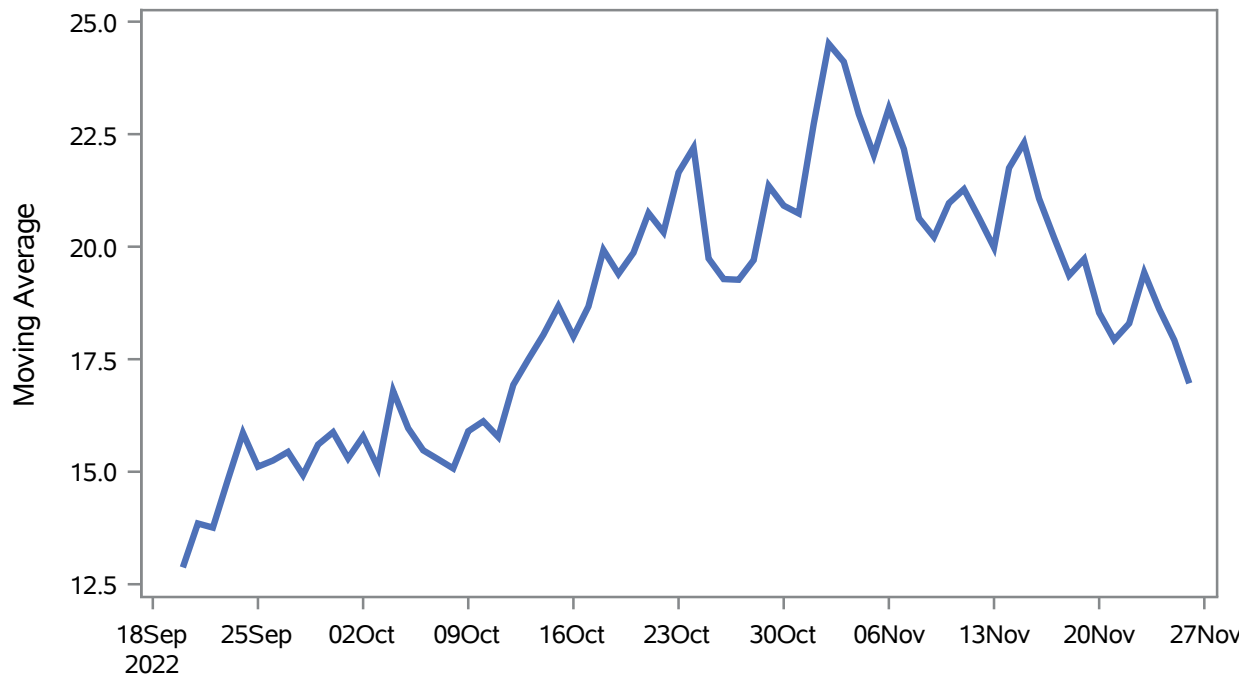
Date (Daily)	New Cases	7-Day Moving Average
15NOV2022	14	20.57
16NOV2022	7	18.57
17NOV2022	11	16.43
18NOV2022	8	14.86
19NOV2022	8	13.86
20NOV2022	8	12.00
21NOV2022	13	9.86
22NOV2022	12	9.57
23NOV2022	7	9.57
24NOV2022	4	8.57
25NOV2022	5	8.14
26NOV2022	6	7.86

Note1: Event Date is calculated as follows based on completed information:
1) Disease onset date 2) Disease diagnosis date 3) Lab result collection date 4) Report date to SNHD.

**Investigations are ongoing; data are subject to change.
Reporting through 28NOV2022**

North Las Vegas zip codes include 89030, 89031, 89032, 89033, 89036, 89081, 89084, 89085, 89086, 89087.

Percent of People Receiving COVID-19 Viral Tests Who Have Positive Results in North Las Vegas



Investigations are ongoing; data are subject to change.

Reporting through 28NOV2022

North Las Vegas zip codes include 89030, 89031, 89032, 89033, 89036, 89081, 89084, 89085, 89086, 89087.

Table 2: Percent of People Receiving COVID-19 Viral Tests Who Have Positive Results in North Las Vegas

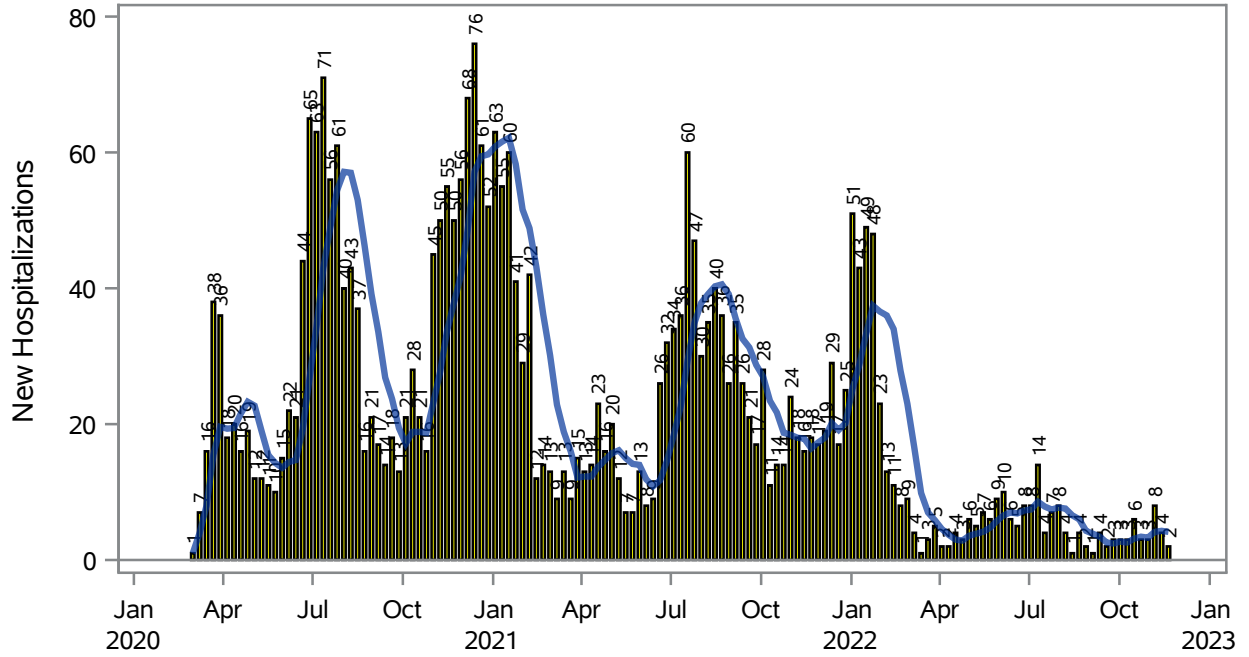
Collection Date	Positive	Negative	Equivocal	Total	% Positivity	7-Day Moving Average
12NOV2022	16	74		90	17.78	20.6
13NOV2022	24	82		106	22.64	20.0
14NOV2022	52	135		187	27.81	21.7
15NOV2022	23	106		129	17.83	22.3
16NOV2022	13	92		105	12.38	21.1
17NOV2022	16	70	2	88	18.18	20.2
18NOV2022	14	60		74	18.92	19.4
19NOV2022	13	51		64	20.31	19.7
20NOV2022	9	54		63	14.29	18.5
21NOV2022	21	68		89	23.60	17.9
22NOV2022	21	81	1	103	20.39	18.3
23NOV2022	14	55		69	20.29	19.4
24NOV2022	5	35		40	12.50	18.6
25NOV2022	11	67		78	14.10	17.9
26NOV2022	11	70		81	13.58	17.0

Note: Testing Data includes a 3 day delay

**Investigations are ongoing; data are subject to change.
Reporting through 28NOV2022**

North Las Vegas zip codes include 89030, 89031, 89032, 89033, 89036, 89081, 89084, 89085, 89086, 89087.

COVID19 Hospitalizations for North Las Vegas, 7-Day Moving Average



New Hospitalizations
 7-Day Moving Average

Investigations are ongoing; data are subject to change.

Reporting through 28NOV2022

North Las Vegas zip codes include 89030, 89031, 89032, 89033, 89036, 89081, 89084, 89085, 89086, 89087.

Table 3: New COVID19-Related Hospitalizations and 7-Day Moving Average in North Las Vegas, previous month

Week	Hospitalizations	7-Day Moving Average
30OCT2022	3	3.29
06NOV2022	8	4.14
13NOV2022	4	4.29
20NOV2022	2	4.14

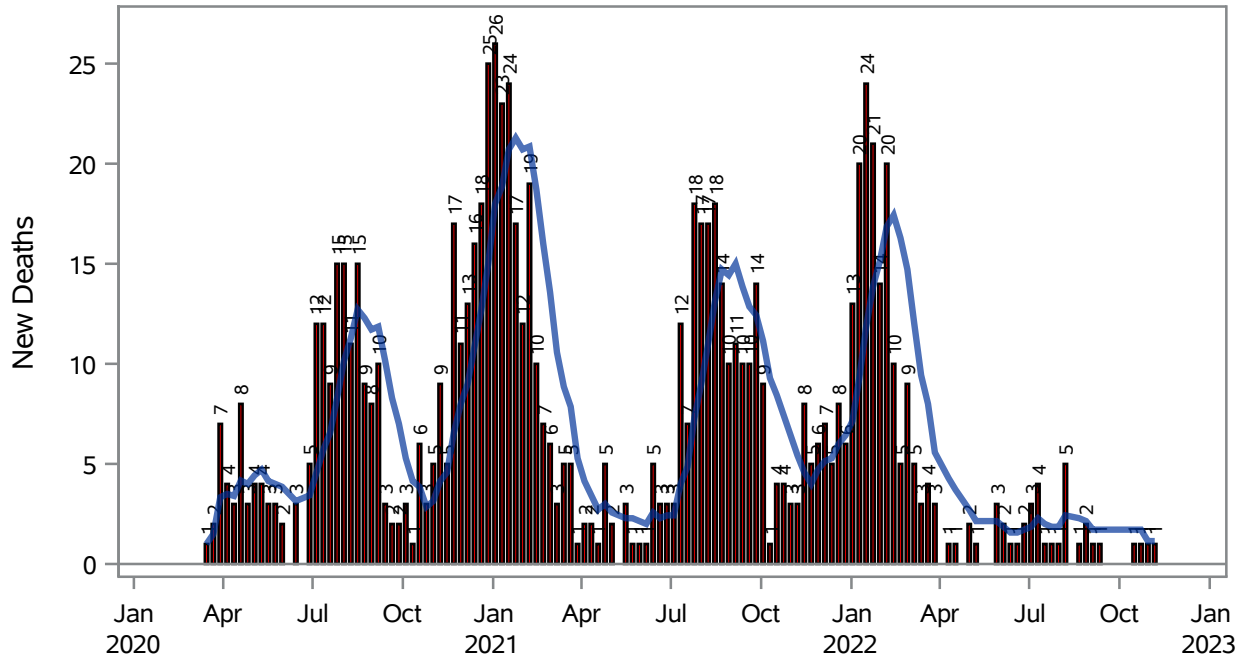
Note1: Admission Date is calculated as follows based on completed information:
A) COVID19 Case is hospitalized B) COVID19 Case has a hospital admission date.

If admission date is missing, then the following is substituted temporarily, in order:
1) Disease onset date 2) Disease diagnosis date 3) Lab result collection date 4) Report date to SNHD.

**Investigations are ongoing; data are subject to change.
Reporting through 28NOV2022**

North Las Vegas zip codes include 89030, 89031, 89032, 89033, 89036, 89081, 89084, 89085, 89086, 89087.

COVID19 Deaths for North Las Vegas, 7-Day Moving Average



■ New Deaths — 7-Day Moving Average

Investigations are ongoing; data are subject to change.

Reporting through 28NOV2022

North Las Vegas zip codes include 89030, 89031, 89032, 89033, 89036, 89081, 89084, 89085, 89086, 89087.

Table 4: New COVID19-Related Deaths and 7-Day Moving Average in North Las Vegas, Previous Month

Week	Deaths	7-Day Moving Average
30OCT2022	1	1.14
06NOV2022	1	1.14

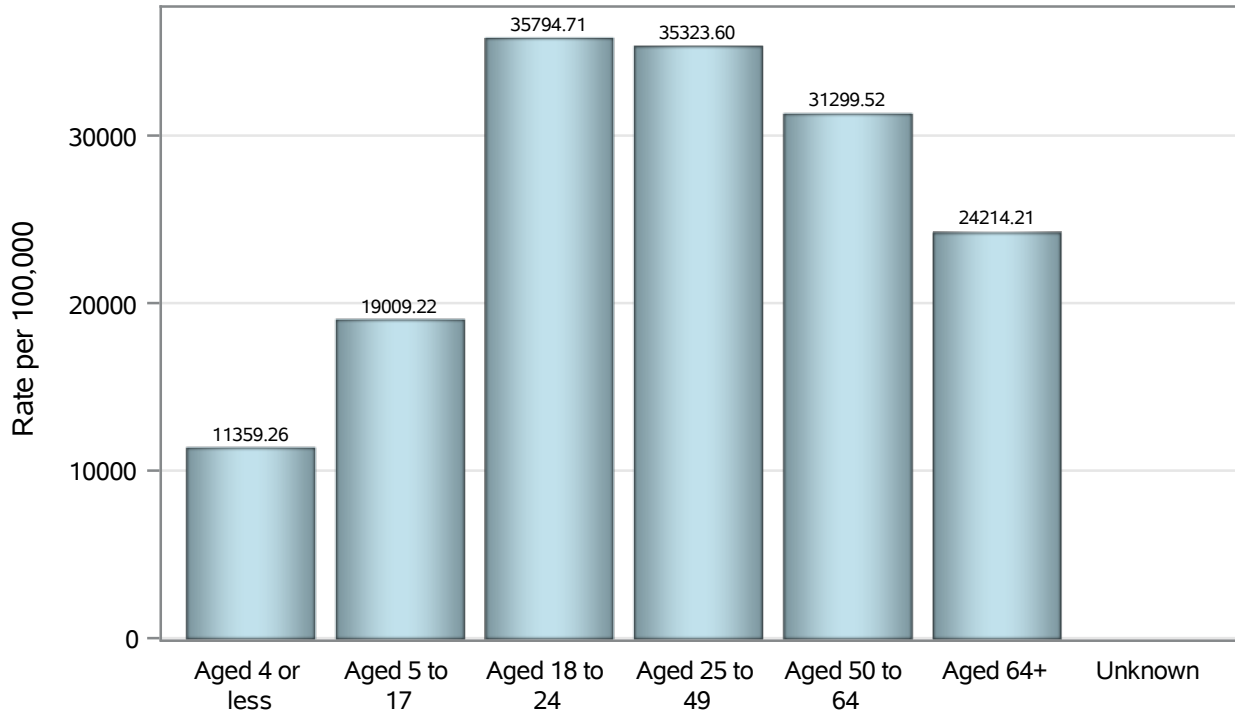
Note1: Date of Death is calculated as follows based on completed information:
A) COVID19 Case is reported as deceased B) COVID19 Case has a reported date of death.

If date of death is missing, then the following is substituted temporarily, in order:
1) Disease onset date 2) Disease diagnosis date
3) Lab result collection date 4) Report date to SNHD.

**Investigations are ongoing; data are subject to change.
Reporting through 28NOV2022**

North Las Vegas zip codes include 89030, 89031, 89032, 89033, 89036, 89081, 89084, 89085, 89086, 89087.

Case Age Rates in North Las Vegas

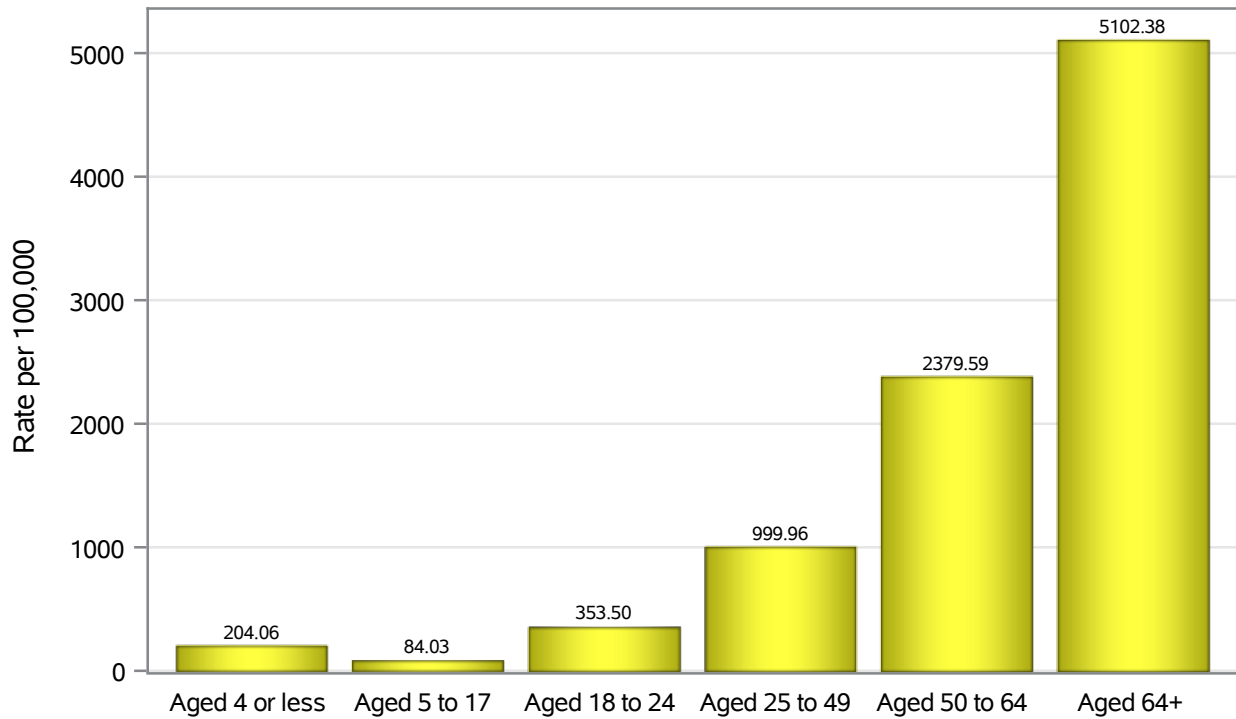


Investigations are ongoing; data are subject to change.

Reporting through 28NOV2022

North Las Vegas zip codes include 89030, 89031, 89032, 89033, 89036, 89081, 89084, 89085, 89086, 89087.

Hospitalization Age Rates in North Las Vegas

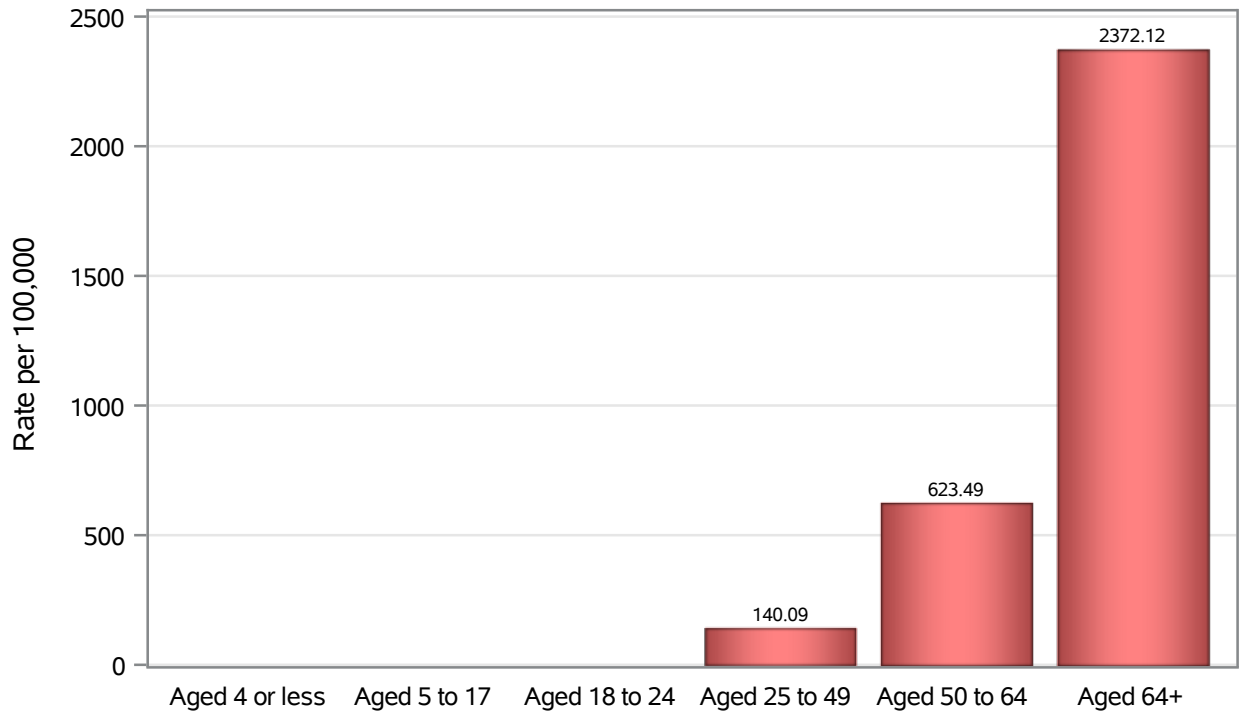


Investigations are ongoing; data are subject to change.

Reporting through 28NOV2022

North Las Vegas zip codes include 89030, 89031, 89032, 89033, 89036, 89081, 89084, 89085, 89086, 89087.

Death Age Rates in North Las Vegas



Investigations are ongoing; data are subject to change.

Reporting through 28NOV2022

North Las Vegas zip codes include 89030, 89031, 89032, 89033, 89036, 89081, 89084, 89085, 89086, 89087.

Table 5: Age and COVID19 in North Las Vegas

Case Status	Age Categories	N	%	Population	Rate per 100,000
Cases	Aged 4 or less	2004	3.0	17,642	11359
	Aged 5 to 17	9501	14.3	49,981	19009
	Aged 18 to 24	8202	12.4	22,914	35795
	Aged 25 to 49	29249	44.2	82,803	35324
	Aged 50 to 64	11496	17.4	36,729	31300
	Aged 64+	5747	8.7	23,734	24214
	Unknown	13	0.0	.	.
Hospitalizations	Aged 4 or less	36	1.2	17,642	204.06
	Aged 5 to 17	42	1.4	49,981	84.03
	Aged 18 to 24	81	2.6	22,914	353.50
	Aged 25 to 49	828	27.0	82,803	999.96
	Aged 50 to 64	874	28.5	36,729	2379.6
	Aged 64+	1211	39.4	23,734	5102.4
Deaths	Aged 4 or less	2	0.2	17,642	.
	Aged 5 to 17	1	0.1	49,981	.
	Aged 18 to 24	2	0.2	22,914	.
	Aged 25 to 49	116	12.7	82,803	140.09
	Aged 50 to 64	229	25.1	36,729	623.49
	Aged 64+	563	61.7	23,734	2372.1

Note1: Population data source for calculating rate estimates: U.S. Census Bureau, ACS 5-year estimate.

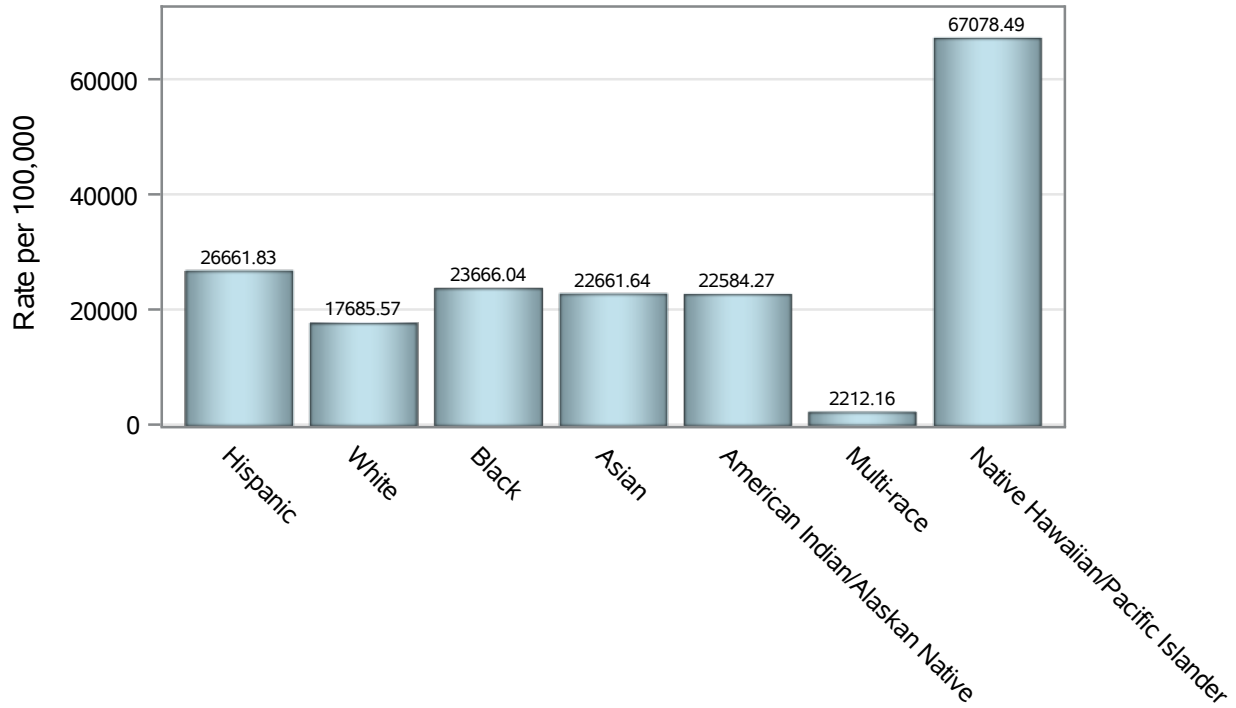
Note2: Rates for categories with fewer than 12 cases are suppressed due to high relative standard error.

Note3: Hospitalizations are regardless of deceased status; Deaths are regardless of hospitalization status

**Investigations are ongoing; data are subject to change.
Reporting through 28NOV2022**

North Las Vegas zip codes include 89030, 89031, 89032, 89033, 89036, 89081, 89084, 89085, 89086, 89087.

Case Race/Ethnicity Rates in North Las Vegas

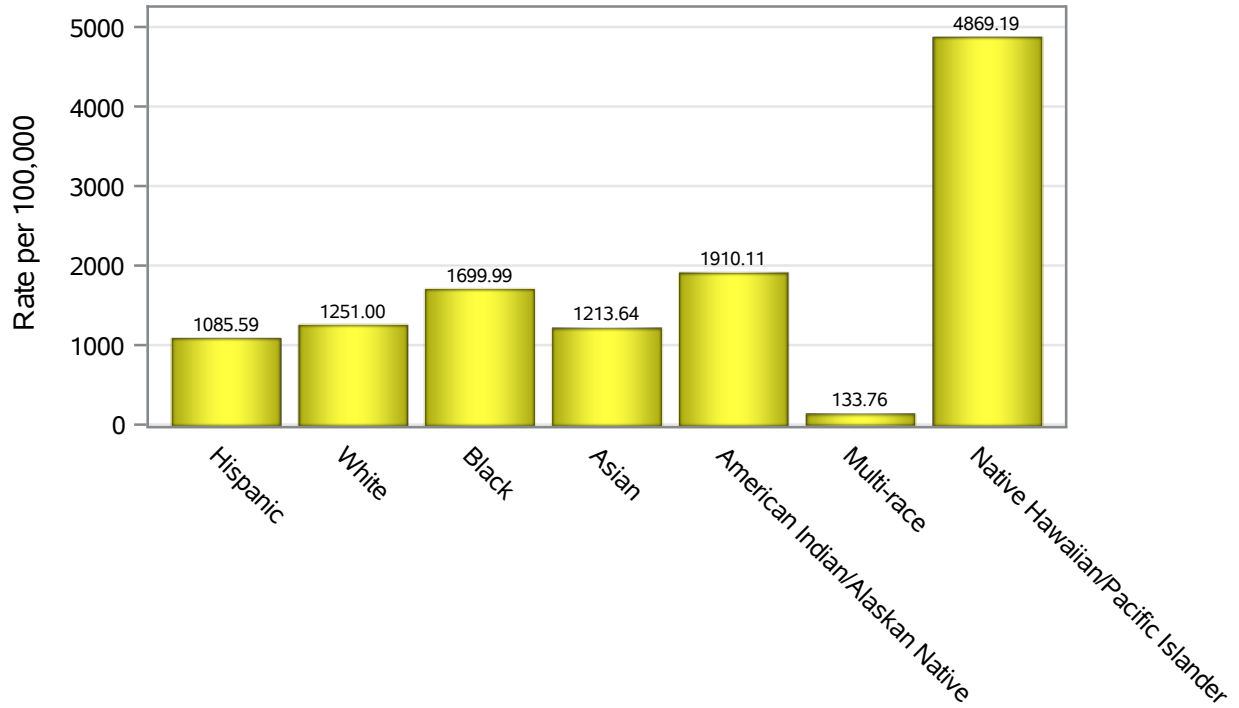


Investigations are ongoing; data are subject to change.

Reporting through 28NOV2022

North Las Vegas zip codes include 89030, 89031, 89032, 89033, 89036, 89081, 89084, 89085, 89086, 89087.

Hospitalization Race/Ethnicity Rates in North Las Vegas

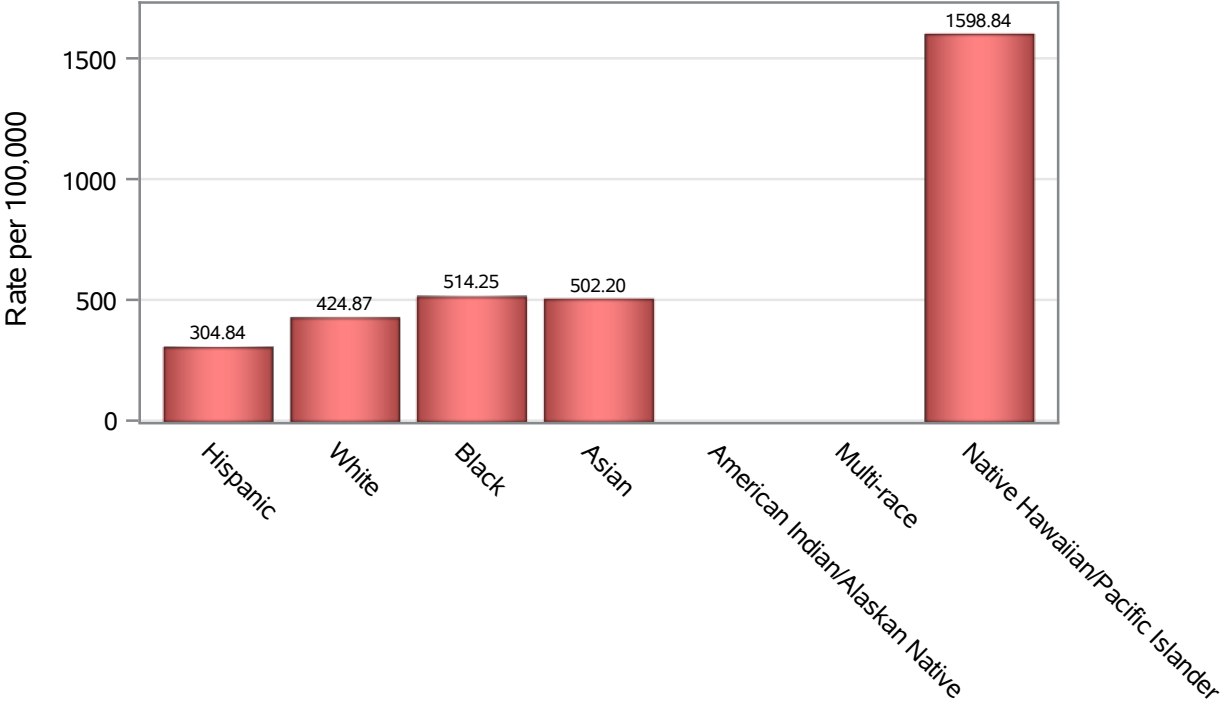


Investigations are ongoing; data are subject to change.

Reporting through 28NOV2022

North Las Vegas zip codes include 89030, 89031, 89032, 89033, 89036, 89081, 89084, 89085, 89086, 89087.

Death Race/Ethnicity Rates in North Las Vegas



Investigations are ongoing; data are subject to change.

Reporting through 28NOV2022

North Las Vegas zip codes include 89030, 89031, 89032, 89033, 89036, 89081, 89084, 89085, 89086, 89087.

Table 6: Race/Ethnicity and COVID19 in North Las Vegas

Case Status	Race Ethnicity Categories	N	%	Population	Rate per 100,000
Cases	Hispanic	25714	38.8	96,445	26662
	White	11239	17.0	63,549	17686
	Black	11137	16.8	47,059	23666
	Asian	3249	4.9	14,337	22662
	American Indian/Alaskan Native	201	0.3	890	22584
	Multi-race	215	0.3	9,719	2212.2
	Native Hawaiian/Pacific Islander	923	1.4	1,376	67078
	Unknown	13534	20.4	.	.
Hospitalizations	Hispanic	1047	34.1	96,445	1085.6
	White	795	25.9	63,549	1251.0
	Black	800	26.0	47,059	1700.0
	Asian	174	5.7	14,337	1213.6
	American Indian/Alaskan Native	17	0.6	890	1910.1
	Multi-race	13	0.4	9,719	133.76
	Native Hawaiian/Pacific Islander	67	2.2	1,376	4869.2
	Unknown	159	5.2	.	.
Deaths	Hispanic	294	32.2	96,445	304.84
	White	270	29.6	63,549	424.87
	Black	242	26.5	47,059	514.25
	Asian	72	7.9	14,337	502.20
	American Indian/Alaskan Native	6	0.7	890	.
	Multi-race	7	0.8	9,719	.
	Native Hawaiian/Pacific Islander	22	2.4	1,376	1598.8

Note1: Population data source for calculating rate estimates: U.S. Census Bureau, ACS 5-year estimate.

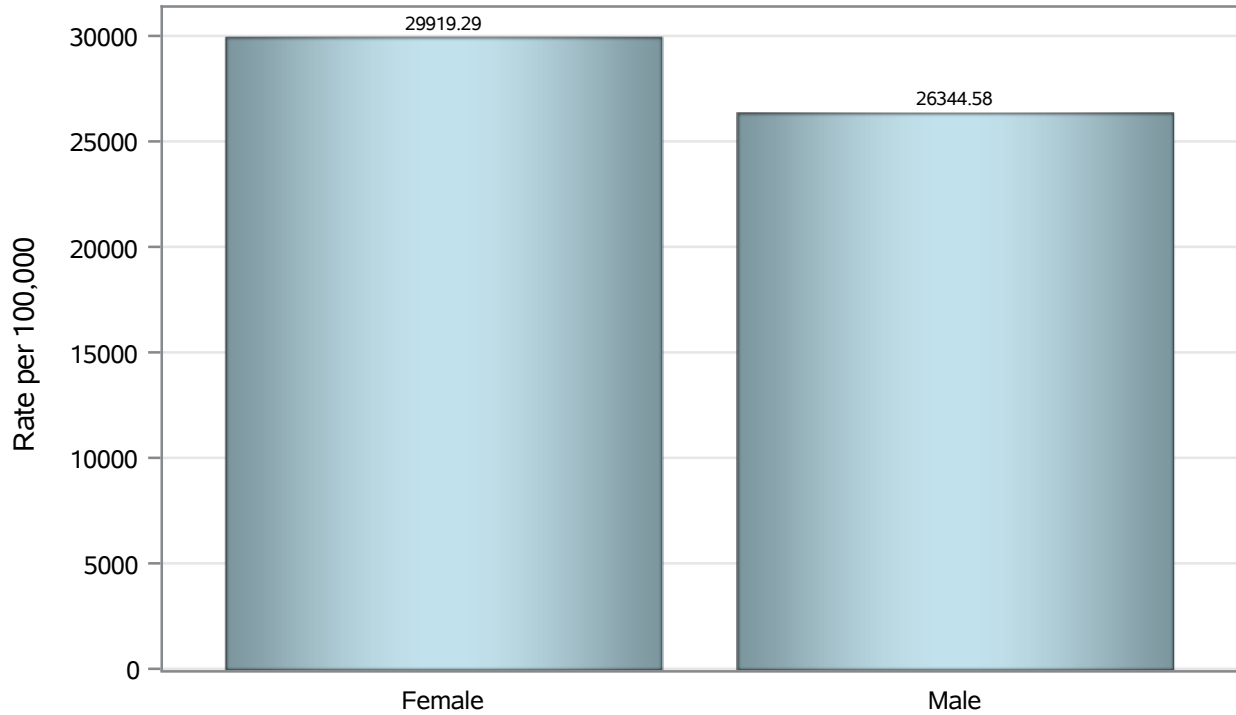
Note2: Rates for categories with fewer than 12 cases are suppressed due to high relative standard error.

Note3: Hospitalizations are regardless of deceased status; Deaths are regardless of hospitalization status

**Investigations are ongoing; data are subject to change.
Reporting through 28NOV2022**

North Las Vegas zip codes include 89030, 89031, 89032, 89033, 89036, 89081, 89084, 89085, 89086, 89087.

Case Birth Sex Rates in North Las Vegas

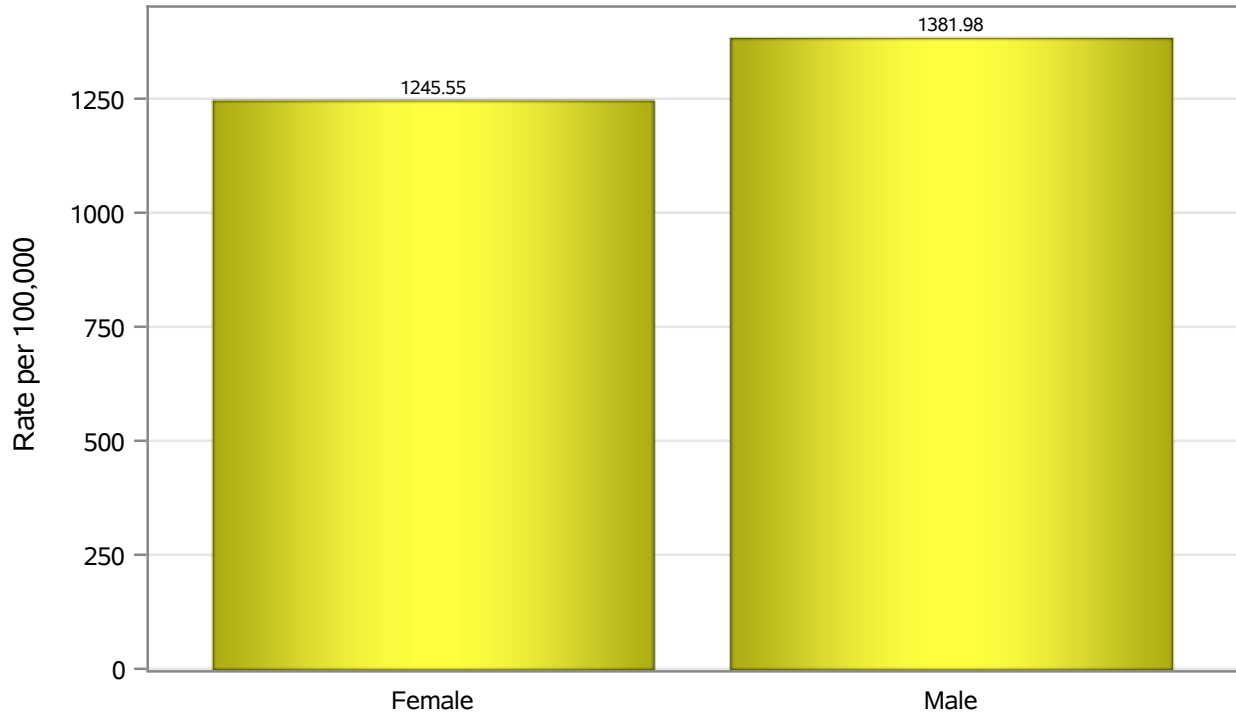


Investigations are ongoing; data are subject to change.

Reporting through 28NOV2022

North Las Vegas zip codes include 89030, 89031, 89032, 89033, 89036, 89081, 89084, 89085, 89086, 89087.

Hospitalization Birth Sex Rates in North Las Vegas

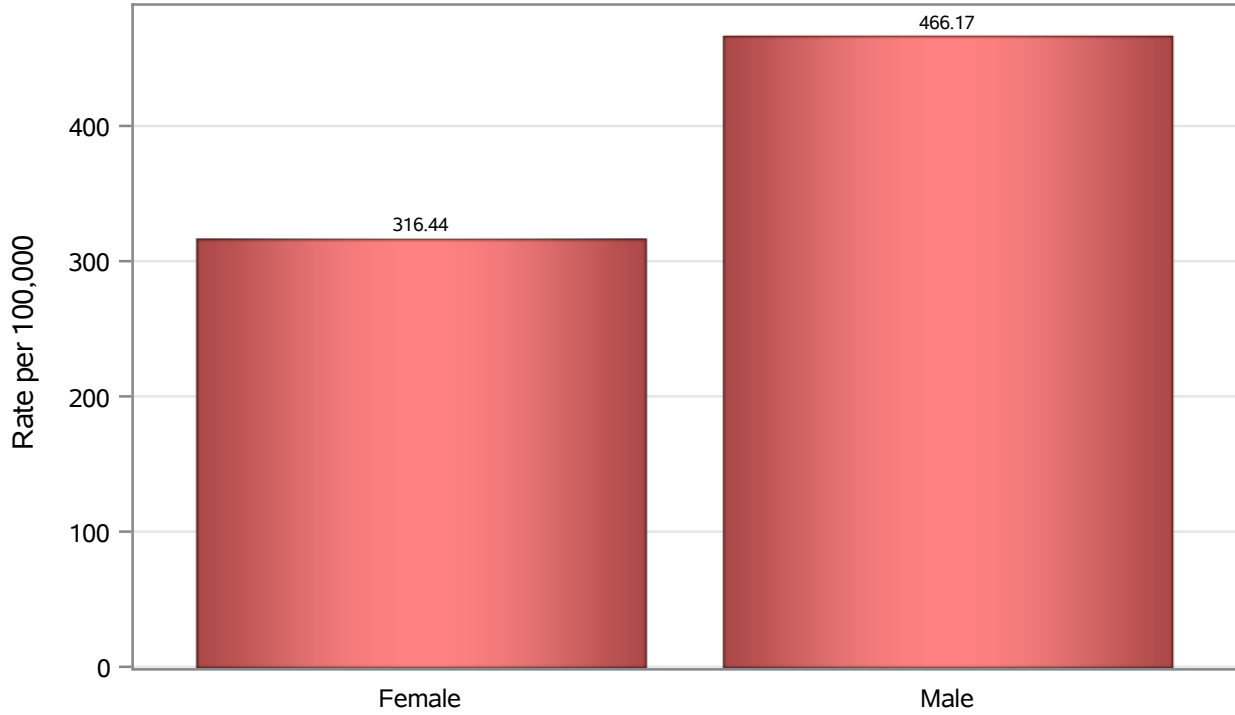


Investigations are ongoing; data are subject to change.

Reporting through 28NOV2022

North Las Vegas zip codes include 89030, 89031, 89032, 89033, 89036, 89081, 89084, 89085, 89086, 89087.

Death Birth Sex Rates in North Las Vegas



Investigations are ongoing; data are subject to change.

Reporting through 28NOV2022

North Las Vegas zip codes include 89030, 89031, 89032, 89033, 89036, 89081, 89084, 89085, 89086, 89087.

Table 7: Birth Sex and COVID19 in North Las Vegas

Case Status	Birth Sex Categories	N	%	Population	Rate per 100,000
Cases	Female	35551	53.7	118823	29919
	Male	30291	45.7	114980	26345
	Unknown	370	0.6	.	.
Hospitalizations	Female	1480	48.2	118823	1245.6
	Male	1589	51.7	114980	1382.0
	Unknown	3	0.1	.	.
Deaths	Female	376	41.2	118823	316.44
	Male	536	58.7	114980	466.17
	Unknown	1	0.1	.	.

Note1: Population data source for calculating rate estimates: U.S. Census Bureau, ACS 5-year estimate.

Note2: Rates for categories with fewer than 12 cases are suppressed due to high relative standard error.

Note3: Hospitalizations are regardless of deceased status; Deaths are regardless of hospitalization status

**Investigations are ongoing; data are subject to change.
Reporting through 28NOV2022**

North Las Vegas zip codes include 89030, 89031, 89032, 89033, 89036, 89081, 89084, 89085, 89086, 89087.