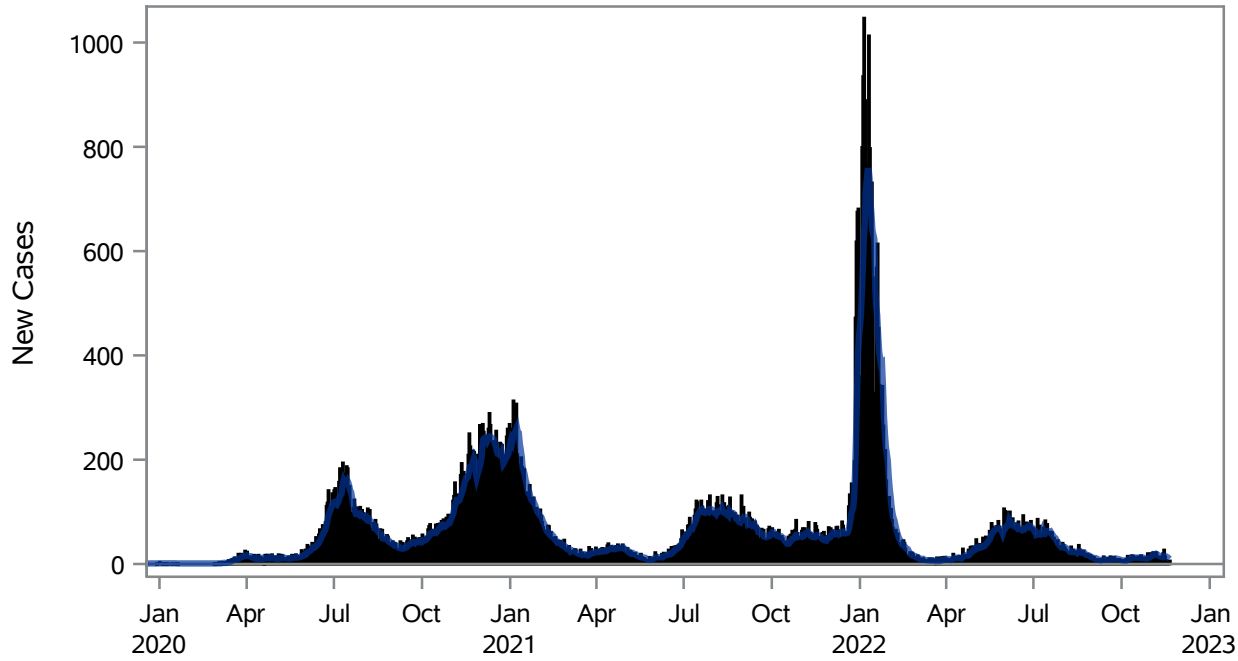


COVID19 Cases for North Las Vegas, 7-Day Moving Average



■ New Cases — 7-Day Moving Average

Investigations are ongoing; data are subject to change.

Reporting through 21NOV2022

North Las Vegas zip codes include 89030, 89031, 89032, 89033, 89036, 89081, 89084, 89085, 89086, 89087.

Table 1: New COVID19 Cases and 7-Day Moving Average in North Las Vegas, Previous Two Weeks

Date (Daily)	New Cases	7-Day Moving Average
08NOV2022	14	17.43
09NOV2022	11	16.00
10NOV2022	13	14.71
11NOV2022	9	14.00
12NOV2022	14	13.43
13NOV2022	20	13.14
14NOV2022	27	15.43
15NOV2022	14	15.43
16NOV2022	7	14.86
17NOV2022	4	13.57
18NOV2022	4	12.86
19NOV2022	4	11.43

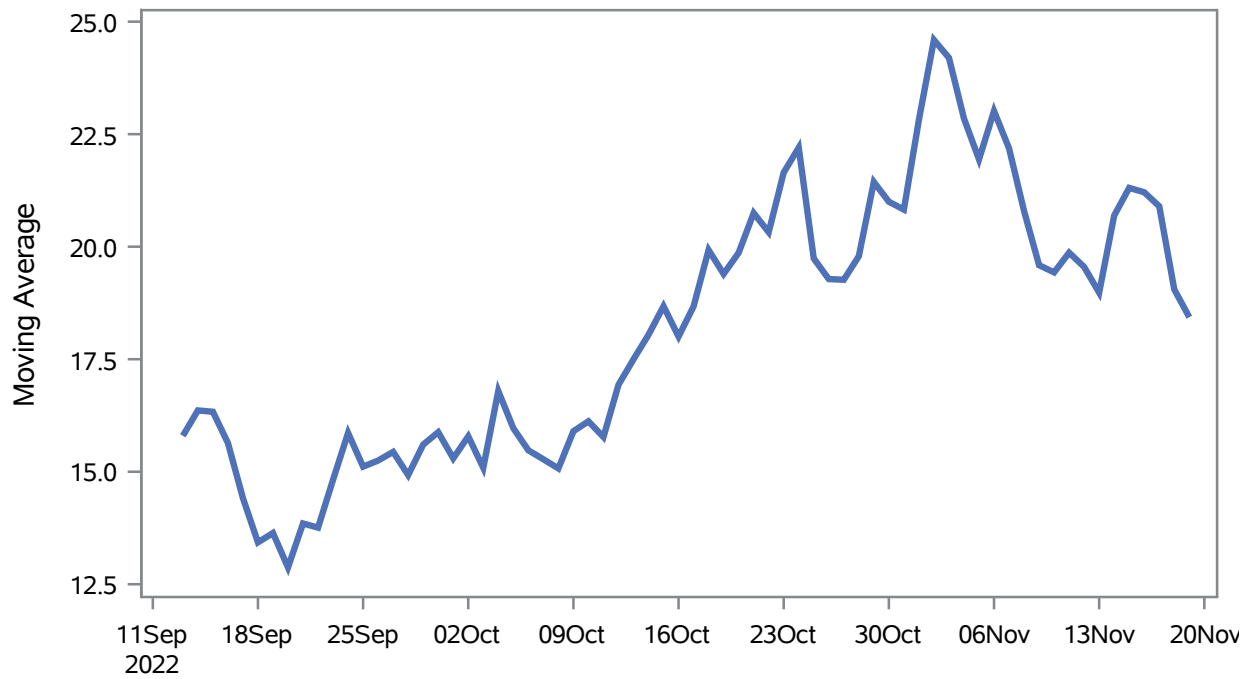
Note1: Event Date is calculated as follows based on completed information:

1) Disease onset date 2) Disease diagnosis date 3) Lab result collection date 4) Report date to SNHD.

**Investigations are ongoing; data are subject to change.
Reporting through 21NOV2022**

North Las Vegas zip codes include 89030, 89031, 89032, 89033, 89036, 89081, 89084, 89085, 89086, 89087.

Percent of People Receiving COVID-19 Viral Tests Who Have Positive Results in North Las Vegas



Investigations are ongoing; data are subject to change.

Reporting through 21NOV2022

North Las Vegas zip codes include 89030, 89031, 89032, 89033, 89036, 89081, 89084, 89085, 89086, 89087.

Table 2: Percent of People Receiving COVID-19 Viral Tests Who Have Positive Results in North Las Vegas

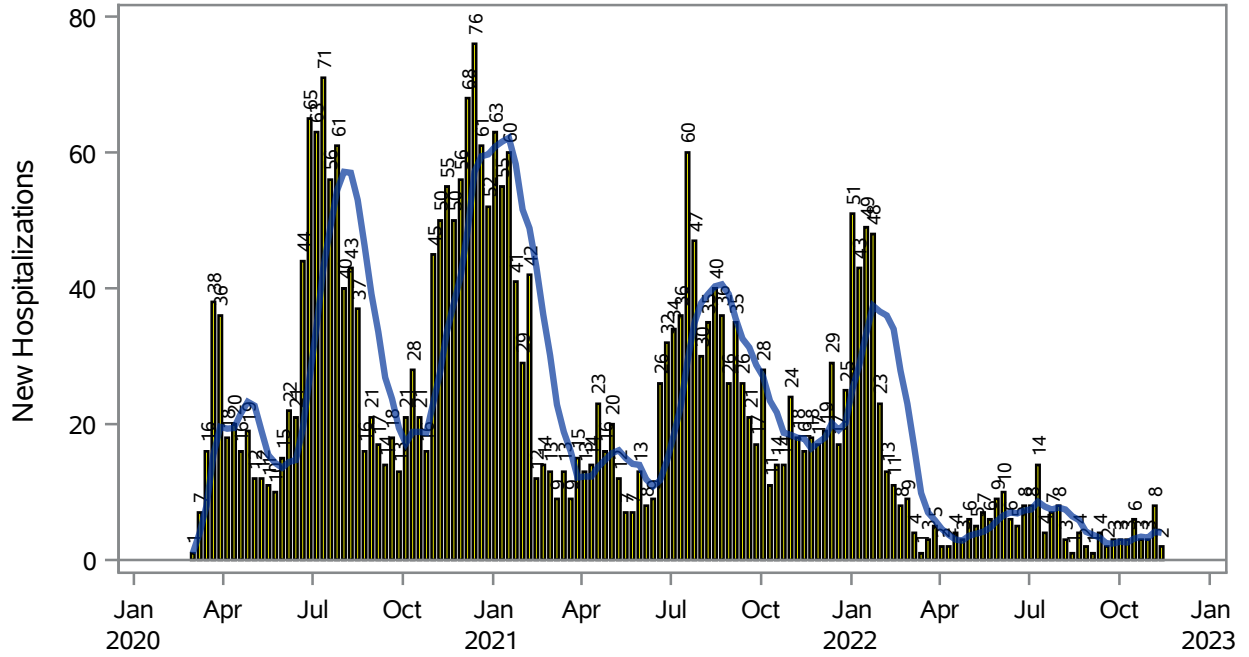
Collection Date	Positive	Negative	Equivocal	Total	% Positivity	7-Day Moving Average
05NOV2022	18	63		81	22.22	21.9
06NOV2022	30	79		109	27.52	23.0
07NOV2022	23	120	1	144	15.97	22.2
08NOV2022	20	114		134	14.93	20.8
09NOV2022	16	87		103	15.53	19.6
10NOV2022	17	78		95	17.89	19.4
11NOV2022	14	42		56	25.00	19.9
12NOV2022	16	64		80	20.00	19.5
13NOV2022	24	78		102	23.53	19.0
14NOV2022	52	134		186	27.96	20.7
15NOV2022	25	105		130	19.23	21.3
16NOV2022	15	86		101	14.85	21.2
17NOV2022	11	57	2	70	15.71	20.9
18NOV2022	7	51		58	12.07	19.1
19NOV2022	8	43		51	15.69	18.4

Note: Testing Data includes a 3 day delay

**Investigations are ongoing; data are subject to change.
Reporting through 21NOV2022**

North Las Vegas zip codes include 89030, 89031, 89032, 89033, 89036, 89081, 89084, 89085, 89086, 89087.

COVID19 Hospitalizations for North Las Vegas, 7-Day Moving Average



New Hospitalizations
 7-Day Moving Average

Investigations are ongoing; data are subject to change.

Reporting through 21NOV2022

North Las Vegas zip codes include 89030, 89031, 89032, 89033, 89036, 89081, 89084, 89085, 89086, 89087.

Table 3: New COVID19-Related Hospitalizations and 7-Day Moving Average in North Las Vegas, previous month

Week	Hospitalizations	7-Day Moving Average
23OCT2022	3	3.43
30OCT2022	3	3.29
06NOV2022	8	4.14
13NOV2022	2	4.00

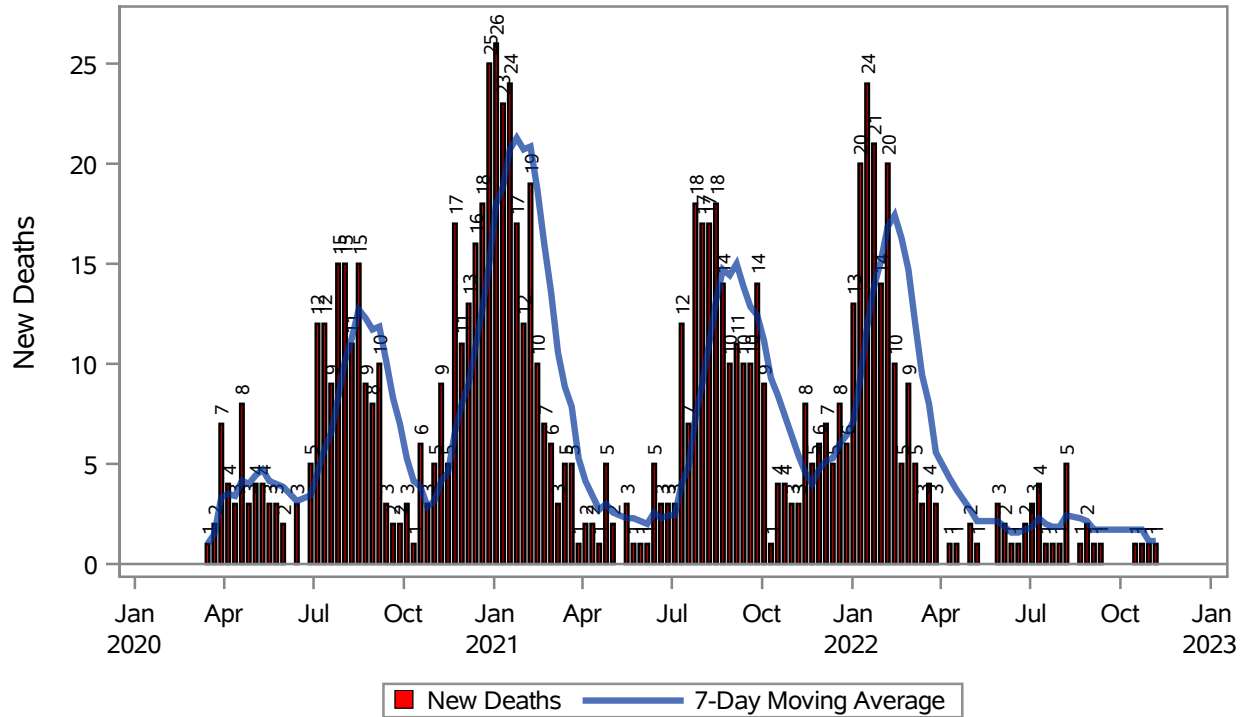
Note1: Admission Date is calculated as follows based on completed information:
A) COVID19 Case is hospitalized B) COVID19 Case has a hospital admission date.

If admission date is missing, then the following is substituted temporarily, in order:
1) Disease onset date 2) Disease diagnosis date 3) Lab result collection date 4) Report date to SNHD.

**Investigations are ongoing; data are subject to change.
Reporting through 21NOV2022**

North Las Vegas zip codes include 89030, 89031, 89032, 89033, 89036, 89081, 89084, 89085, 89086, 89087.

COVID19 Deaths for North Las Vegas, 7-Day Moving Average



Investigations are ongoing; data are subject to change.

Reporting through 21NOV2022

North Las Vegas zip codes include 89030, 89031, 89032, 89033, 89036, 89081, 89084, 89085, 89086, 89087.

Table 4: New COVID19-Related Deaths and 7-Day Moving Average in North Las Vegas, Previous Month

Week	Deaths	7-Day Moving Average
23OCT2022	1	1.71
30OCT2022	1	1.14
06NOV2022	1	1.14

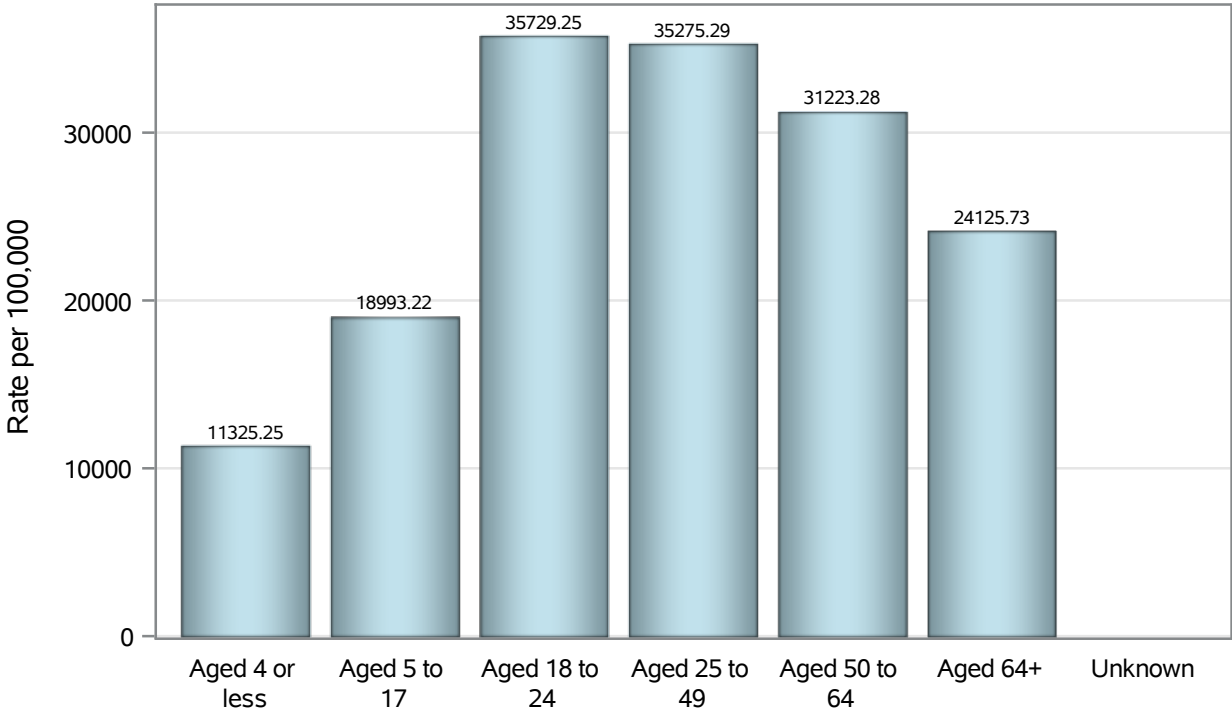
Note1: Date of Death is calculated as follows based on completed information:
A) COVID19 Case is reported as deceased B) COVID19 Case has a reported date of death.

If date of death is missing, then the following is substituted temporarily, in order:
1) Disease onset date 2) Disease diagnosis date
3) Lab result collection date 4) Report date to SNHD.

**Investigations are ongoing; data are subject to change.
Reporting through 21NOV2022**

North Las Vegas zip codes include 89030, 89031, 89032, 89033, 89036, 89081, 89084, 89085, 89086, 89087.

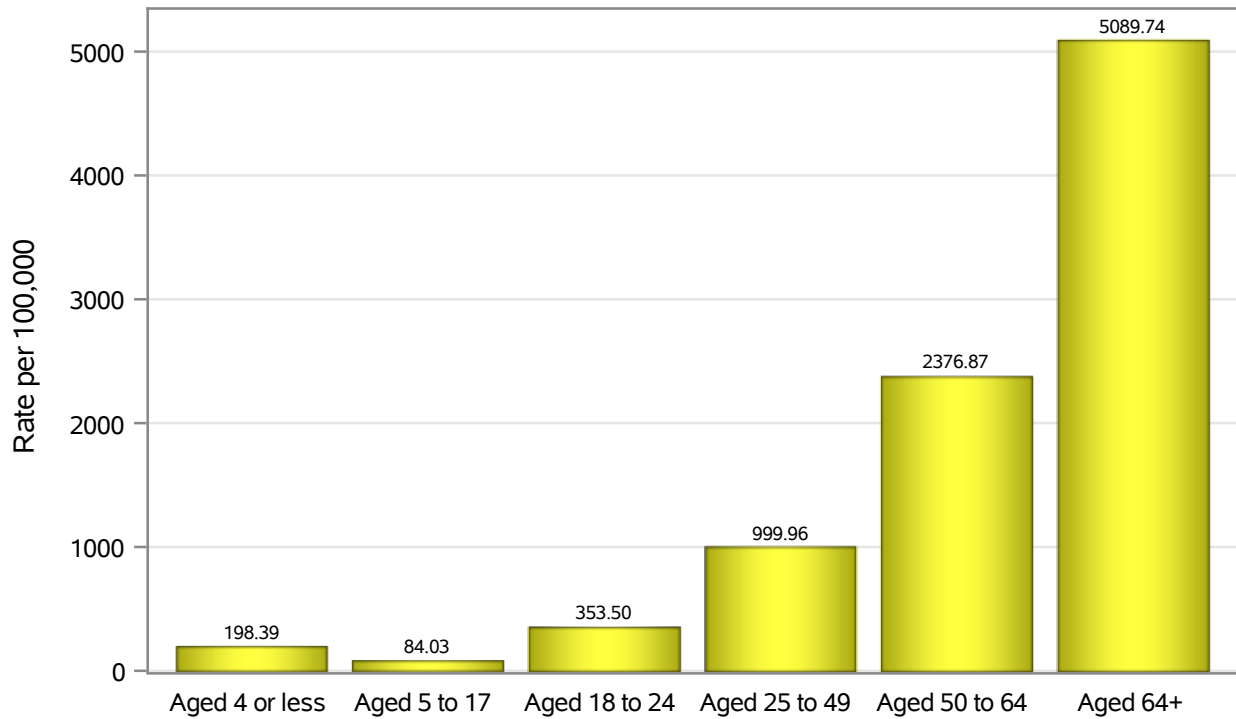
Case Age Rates in North Las Vegas



Investigations are ongoing; data are subject to change.
Reporting through 21NOV2022

North Las Vegas zip codes include 89030, 89031, 89032, 89033, 89036, 89081, 89084, 89085, 89086, 89087.

Hospitalization Age Rates in North Las Vegas

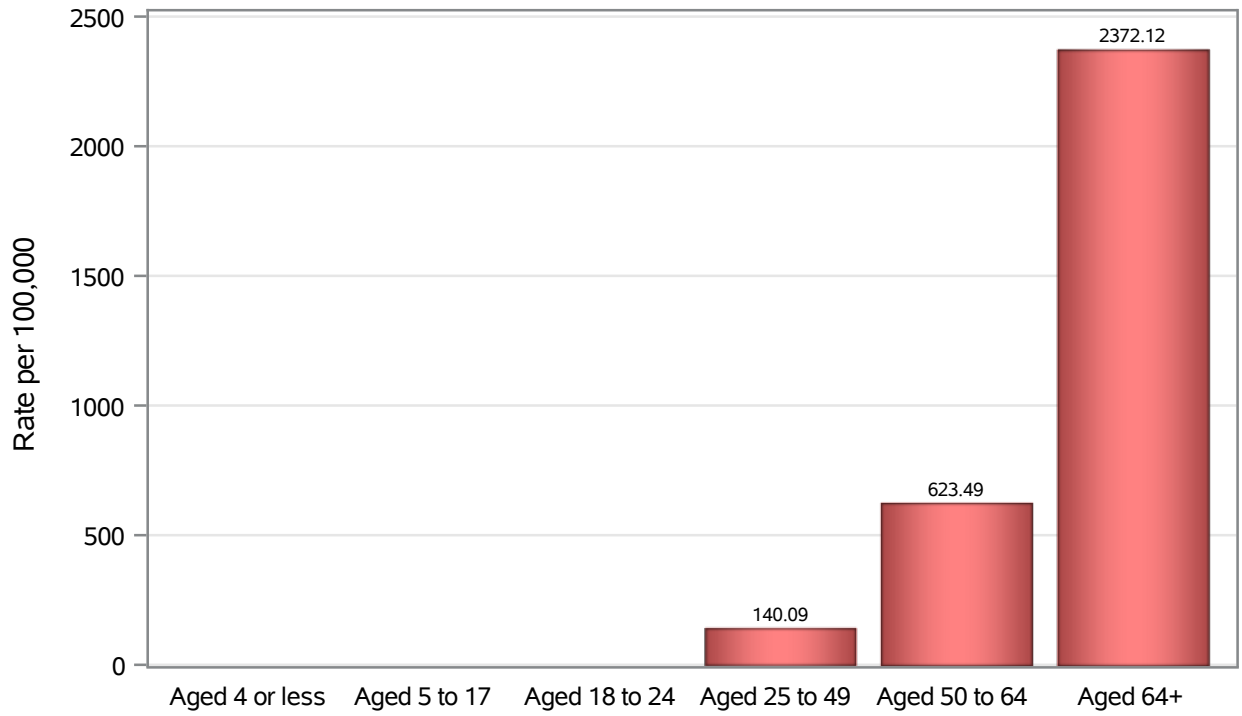


Investigations are ongoing; data are subject to change.

Reporting through 21NOV2022

North Las Vegas zip codes include 89030, 89031, 89032, 89033, 89036, 89081, 89084, 89085, 89086, 89087.

Death Age Rates in North Las Vegas



Investigations are ongoing; data are subject to change.

Reporting through 21NOV2022

North Las Vegas zip codes include 89030, 89031, 89032, 89033, 89036, 89081, 89084, 89085, 89086, 89087.

Table 5: Age and COVID19 in North Las Vegas

Case Status	Age Categories	N	%	Population	Rate per 100,000
Cases	Aged 4 or less	1998	3.0	17,642	11325
	Aged 5 to 17	9493	14.4	49,981	18993
	Aged 18 to 24	8187	12.4	22,914	35729
	Aged 25 to 49	29209	44.2	82,803	35275
	Aged 50 to 64	11468	17.4	36,729	31223
	Aged 64+	5726	8.7	23,734	24126
	Unknown	13	0.0	.	.
Hospitalizations	Aged 4 or less	35	1.1	17,642	198.39
	Aged 5 to 17	42	1.4	49,981	84.03
	Aged 18 to 24	81	2.6	22,914	353.50
	Aged 25 to 49	828	27.0	82,803	999.96
	Aged 50 to 64	873	28.5	36,729	2376.9
	Aged 64+	1208	39.4	23,734	5089.7
	Deaths	Aged 4 or less	2	0.2	17,642
Aged 5 to 17		1	0.1	49,981	.
Aged 18 to 24		2	0.2	22,914	.
Aged 25 to 49		116	12.7	82,803	140.09
Aged 50 to 64		229	25.1	36,729	623.49
Aged 64+		563	61.7	23,734	2372.1

Note1: Population data source for calculating rate estimates: U.S. Census Bureau, ACS 5-year estimate.

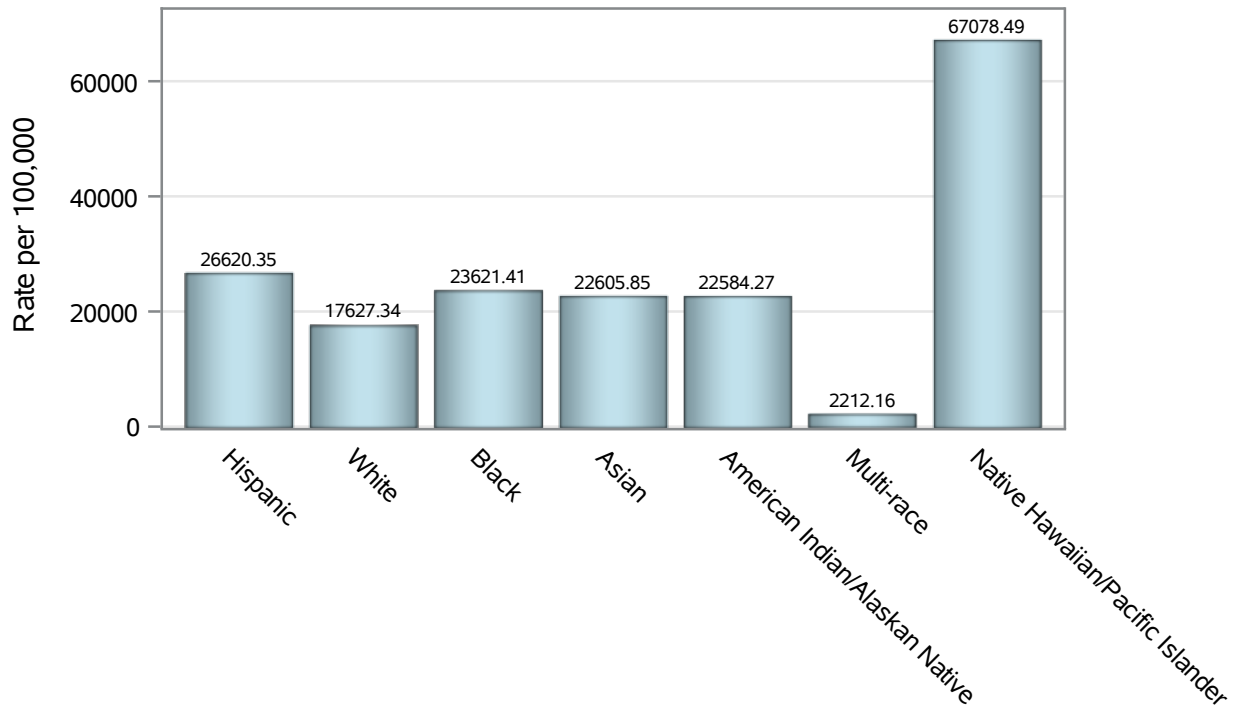
Note2: Rates for categories with fewer than 12 cases are suppressed due to high relative standard error.

Note3: Hospitalizations are regardless of deceased status; Deaths are regardless of hospitalization status

**Investigations are ongoing; data are subject to change.
Reporting through 21NOV2022**

North Las Vegas zip codes include 89030, 89031, 89032, 89033, 89036, 89081, 89084, 89085, 89086, 89087.

Case Race/Ethnicity Rates in North Las Vegas

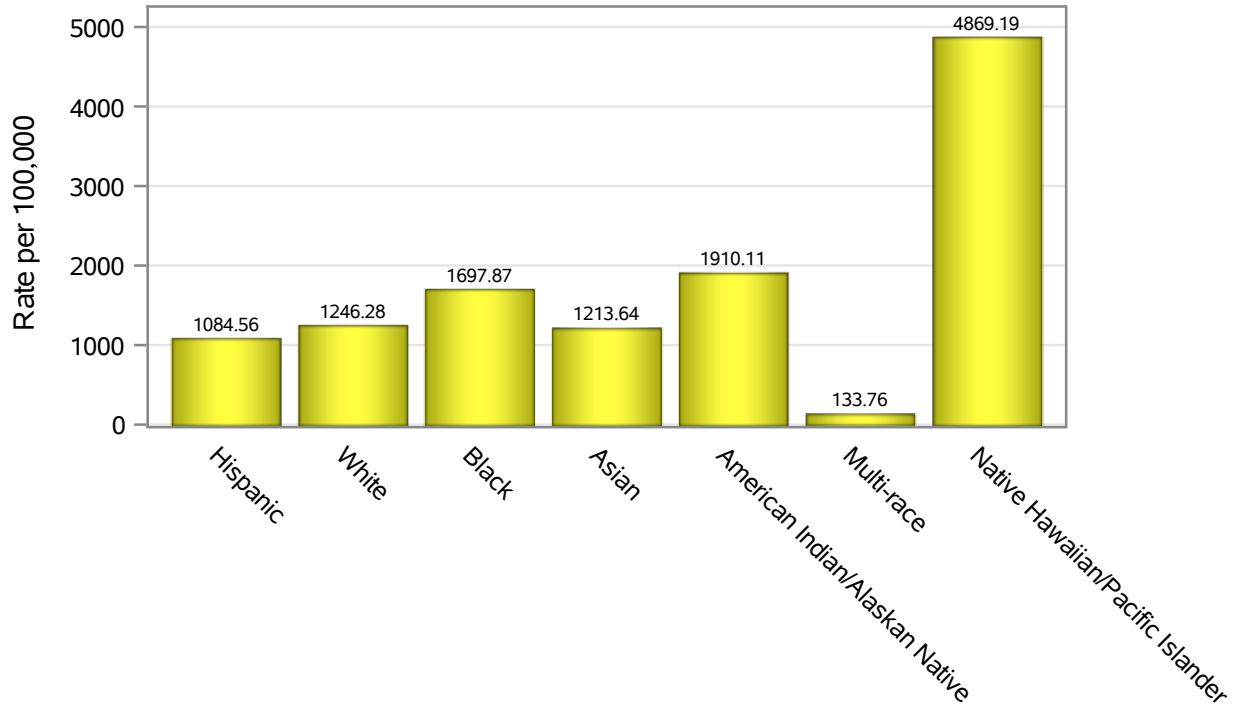


Investigations are ongoing; data are subject to change.

Reporting through 21NOV2022

North Las Vegas zip codes include 89030, 89031, 89032, 89033, 89036, 89081, 89084, 89085, 89086, 89087.

Hospitalization Race/Ethnicity Rates in North Las Vegas

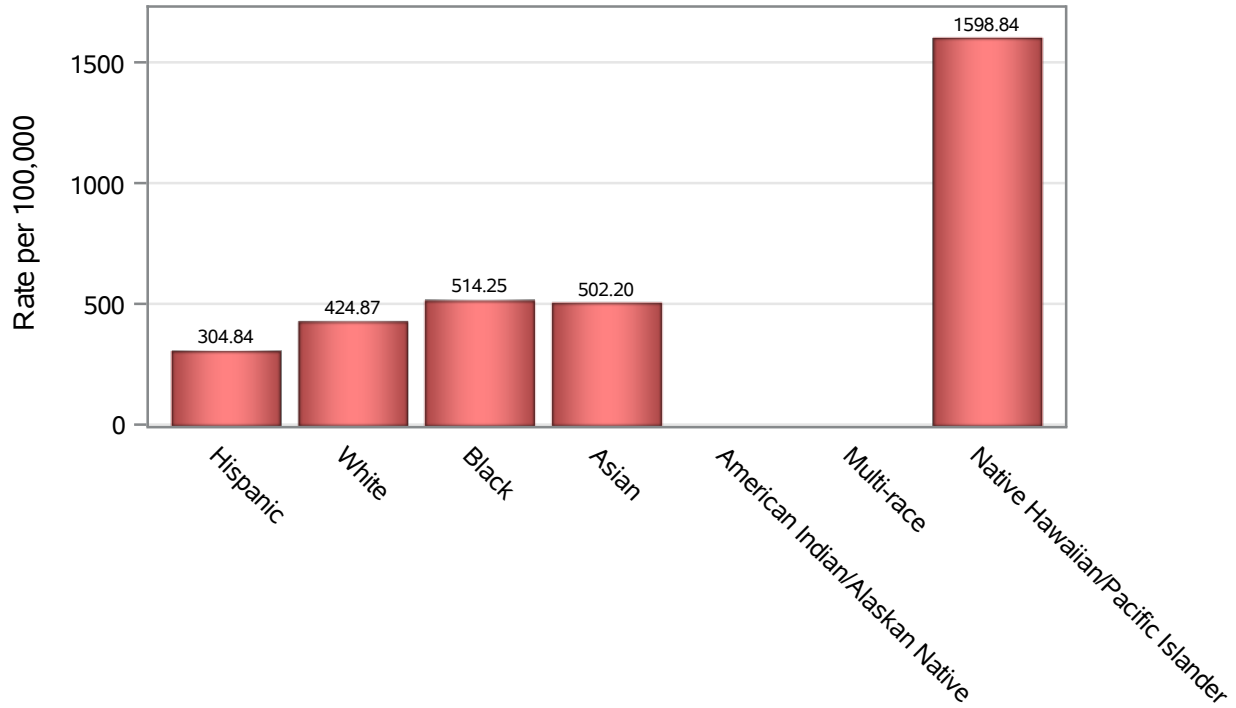


Investigations are ongoing; data are subject to change.

Reporting through 21NOV2022

North Las Vegas zip codes include 89030, 89031, 89032, 89033, 89036, 89081, 89084, 89085, 89086, 89087.

Death Race/Ethnicity Rates in North Las Vegas



Investigations are ongoing; data are subject to change.

Reporting through 21NOV2022

North Las Vegas zip codes include 89030, 89031, 89032, 89033, 89036, 89081, 89084, 89085, 89086, 89087.

Table 6: Race/Ethnicity and COVID19 in North Las Vegas

Case Status	Race Ethnicity Categories	N	%	Population	Rate per 100,000
Cases	Hispanic	25674	38.8	96,445	26620
	White	11202	16.9	63,549	17627
	Black	11116	16.8	47,059	23621
	Asian	3241	4.9	14,337	22606
	American Indian/Alaskan Native	201	0.3	890	22584
	Multi-race	215	0.3	9,719	2212.2
	Native Hawaiian/Pacific Islander	923	1.4	1,376	67078
	Unknown	13522	20.5	.	.
Hospitalizations	Hispanic	1046	34.1	96,445	1084.6
	White	792	25.8	63,549	1246.3
	Black	799	26.1	47,059	1697.9
	Asian	174	5.7	14,337	1213.6
	American Indian/Alaskan Native	17	0.6	890	1910.1
	Multi-race	13	0.4	9,719	133.76
	Native Hawaiian/Pacific Islander	67	2.2	1,376	4869.2
	Unknown	159	5.2	.	.
Deaths	Hispanic	294	32.2	96,445	304.84
	White	270	29.6	63,549	424.87
	Black	242	26.5	47,059	514.25
	Asian	72	7.9	14,337	502.20
	American Indian/Alaskan Native	6	0.7	890	.
	Multi-race	7	0.8	9,719	.
	Native Hawaiian/Pacific Islander	22	2.4	1,376	1598.8

Note1: Population data source for calculating rate estimates: U.S. Census Bureau, ACS 5-year estimate.

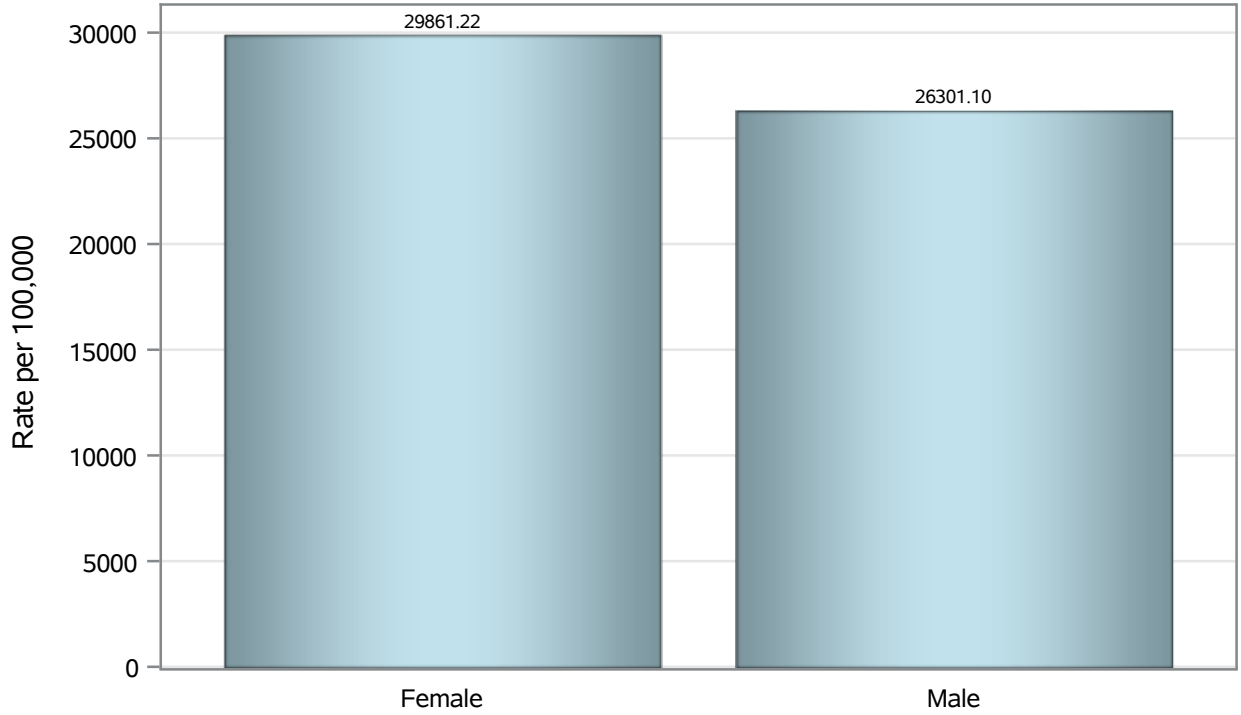
Note2: Rates for categories with fewer than 12 cases are suppressed due to high relative standard error.

Note3: Hospitalizations are regardless of deceased status; Deaths are regardless of hospitalization status

**Investigations are ongoing; data are subject to change.
Reporting through 21NOV2022**

North Las Vegas zip codes include 89030, 89031, 89032, 89033, 89036, 89081, 89084, 89085, 89086, 89087.

Case Birth Sex Rates in North Las Vegas

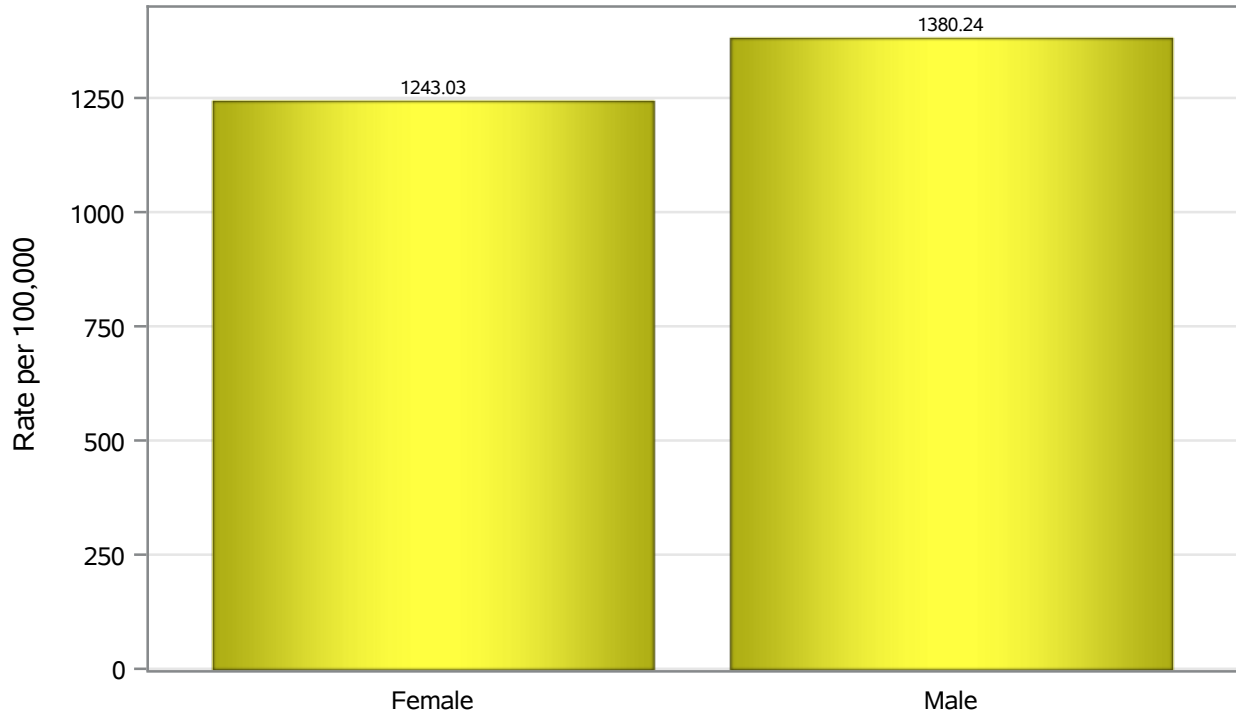


Investigations are ongoing; data are subject to change.

Reporting through 21NOV2022

North Las Vegas zip codes include 89030, 89031, 89032, 89033, 89036, 89081, 89084, 89085, 89086, 89087.

Hospitalization Birth Sex Rates in North Las Vegas

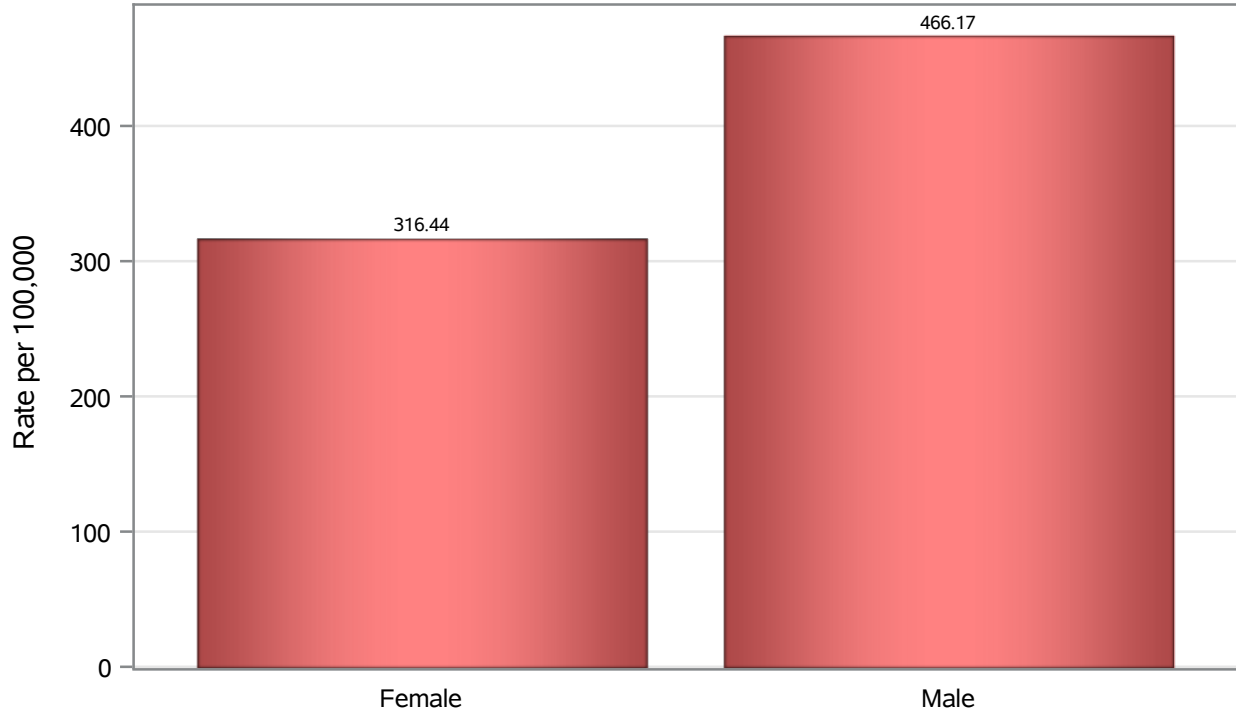


Investigations are ongoing; data are subject to change.

Reporting through 21NOV2022

North Las Vegas zip codes include 89030, 89031, 89032, 89033, 89036, 89081, 89084, 89085, 89086, 89087.

Death Birth Sex Rates in North Las Vegas



Investigations are ongoing; data are subject to change.

Reporting through 21NOV2022

North Las Vegas zip codes include 89030, 89031, 89032, 89033, 89036, 89081, 89084, 89085, 89086, 89087.

Table 7: Birth Sex and COVID19 in North Las Vegas

Case Status	Birth Sex Categories	N	%	Population	Rate per 100,000
Cases	Female	35482	53.7	118823	29861
	Male	30241	45.8	114980	26301
	Unknown	371	0.6	.	.
Hospitalizations	Female	1477	48.2	118823	1243.0
	Male	1587	51.7	114980	1380.2
	Unknown	3	0.1	.	.
Deaths	Female	376	41.2	118823	316.44
	Male	536	58.7	114980	466.17
	Unknown	1	0.1	.	.

Note1: Population data source for calculating rate estimates: U.S. Census Bureau, ACS 5-year estimate.

Note2: Rates for categories with fewer than 12 cases are suppressed due to high relative standard error.

Note3: Hospitalizations are regardless of deceased status; Deaths are regardless of hospitalization status

**Investigations are ongoing; data are subject to change.
Reporting through 21NOV2022**

North Las Vegas zip codes include 89030, 89031, 89032, 89033, 89036, 89081, 89084, 89085, 89086, 89087.