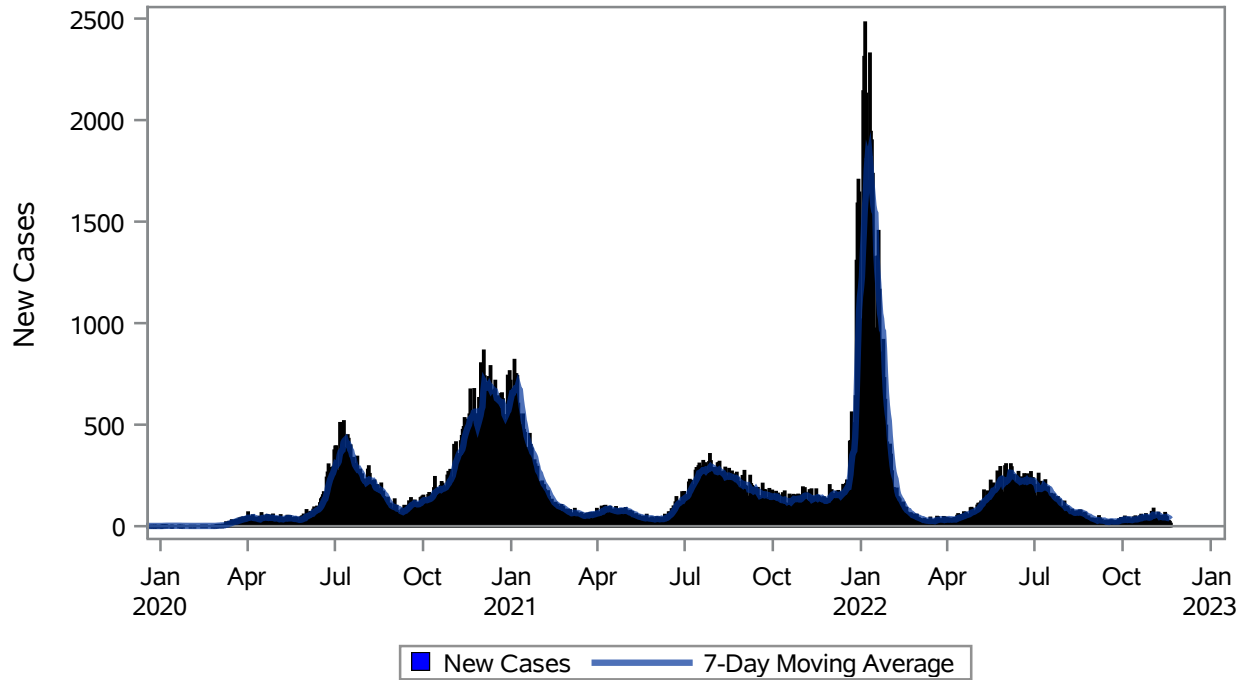


COVID19 Cases for Las Vegas, 7-Day Moving Average



Investigations are ongoing; data are subject to change.

Reporting through 21NOV2022

Las Vegas zip codes include 89101, 89102, 89104, 89106, 89108, 89109, 89110, 89117, 89129, 89130, 89131, 89143, 89146, 89149, 89166, 89145, 89144, 89134, 89107, 89128, 89138.

Table 1: New COVID19 Cases and 7-Day Moving Average in Las Vegas, Previous Two Weeks

Date (Daily)	New Cases	7-Day Moving Average
08NOV2022	41	53.00
09NOV2022	34	45.71
10NOV2022	50	46.71
11NOV2022	30	45.71
12NOV2022	39	43.86
13NOV2022	48	43.86
14NOV2022	64	43.71
15NOV2022	47	44.57
16NOV2022	43	45.86
17NOV2022	21	41.71
18NOV2022	24	40.86
19NOV2022	20	38.14

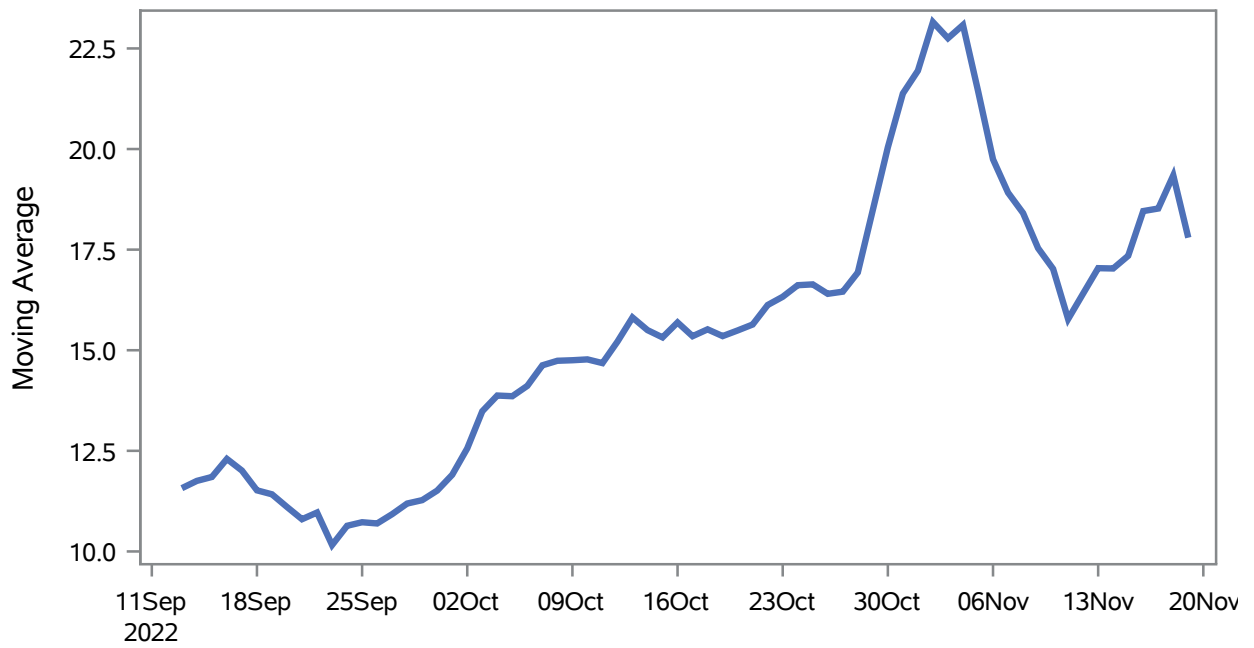
Note1: Event Date is calculated as follows based on completed information:
1) Disease onset date 2) Disease diagnosis date 3) Lab result collection date 4) Report date to SNHD.

Investigations are ongoing; data are subject to change.

Reporting through 21NOV2022

Las Vegas zip codes include 89101, 89102, 89104, 89106, 89108, 89109, 89110, 89117, 89129, 89130, 89131, 89143, 89146, 89149, 89166, 89145, 89144, 89134, 89107, 89128, 89138.

Percent of People Receiving COVID-19 Viral Tests Who Have Positive Results in Las Vegas



Investigations are ongoing; data are subject to change.
Reporting through 21NOV2022

Las Vegas zip codes include 89101, 89102, 89104, 89106, 89108, 89109, 89110, 89117, 89129, 89130, 89131, 89143, 89146, 89149, 89166, 89145, 89144, 89134, 89107, 89128, 89138.

Table 2: Percent of People Receiving COVID-19 Viral Tests Who Have Positive Results in Las Vegas

Collection Date	Positive	Negative	Equivocal	Total	% Positivity	7-Day Moving Average
05NOV2022	103	445	1	549	18.76	21.4
06NOV2022	131	542	1	674	19.44	19.7
07NOV2022	215	951	3	1169	18.39	18.9
08NOV2022	157	958	1	1116	14.07	18.4
09NOV2022	132	691		823	16.04	17.5
10NOV2022	79	608	3	690	11.45	17.0
11NOV2022	54	385	1	440	12.27	15.8
12NOV2022	129	427		556	23.20	16.4
13NOV2022	156	496	2	654	23.85	17.0
14NOV2022	234	1041	1	1276	18.34	17.0
15NOV2022	180	925	1	1106	16.27	17.3
16NOV2022	156	499		655	23.82	18.5
17NOV2022	71	526		597	11.89	18.5
18NOV2022	90	409		499	18.04	19.3
19NOV2022	45	319		364	12.36	17.8

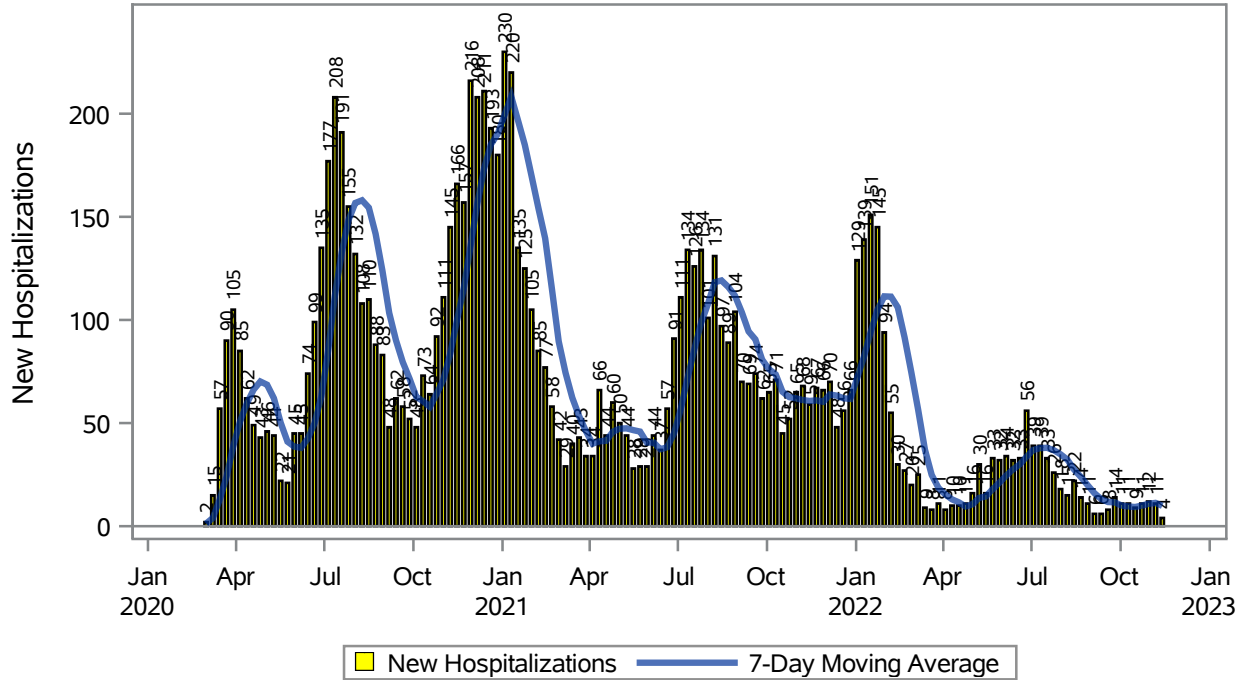
Note: Testing Data includes a 3 day delay

Investigations are ongoing; data are subject to change.

Reporting through 21NOV2022

Las Vegas zip codes include 89101, 89102, 89104, 89106, 89108, 89109, 89110, 89117, 89129, 89130, 89131, 89143, 89146, 89149, 89166, 89145, 89144, 89134, 89107, 89128, 89138.

COVID19 Hospitalizations for Las Vegas, 7-Day Moving Average



Investigations are ongoing; data are subject to change.

Reporting through 21NOV2022

Las Vegas zip codes include 89101, 89102, 89104, 89106, 89108, 89109, 89110, 89117, 89129, 89130, 89131, 89143, 89146, 89149, 89166, 89145, 89144, 89134, 89107, 89128, 89138.

Table 3: New COVID19-Related Hospitalizations and 7-Day Moving Average in Las Vegas, previous month

Week	Hospitalizations	7-Day Moving Average
23OCT2022	11	10.0
30OCT2022	12	10.9
06NOV2022	11	11.3
13NOV2022	4	9.86

Note1: Admission Date is calculated as follows based on completed information:
A) COVID19 Case is hospitalized B) COVID19 Case has a hospital admission date.

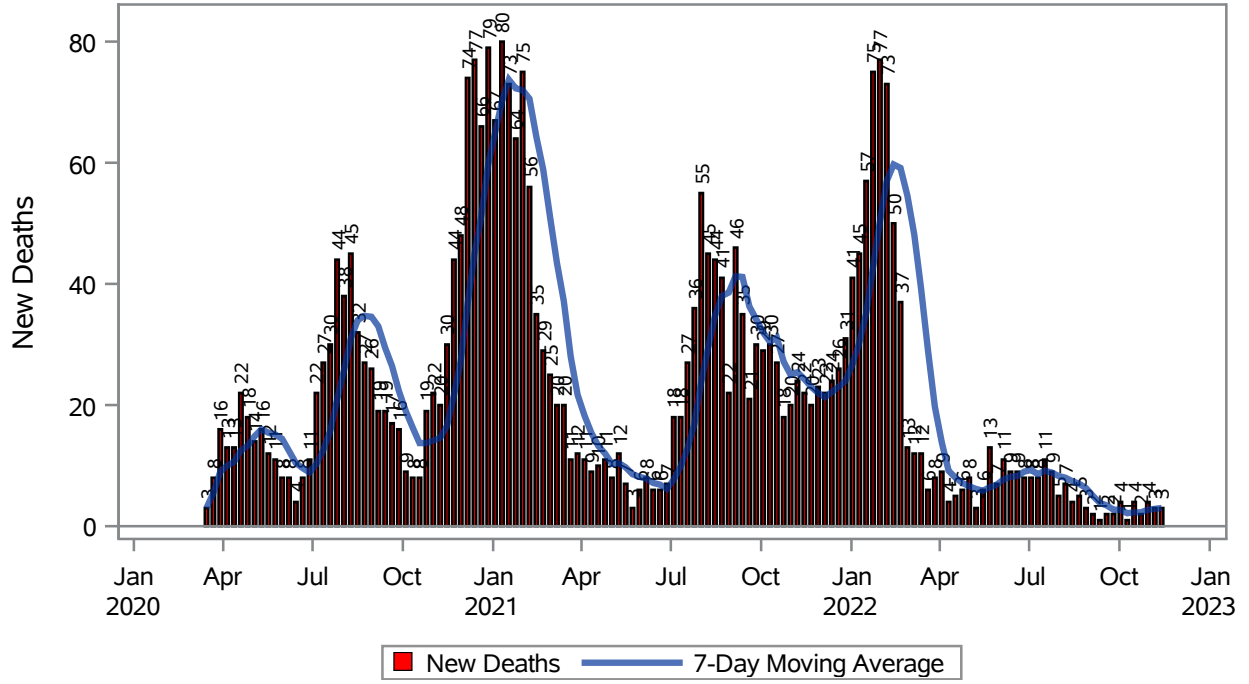
If admission date is missing, then the following is substituted temporarily, in order:
1) Disease onset date 2) Disease diagnosis date 3) Lab result collection date 4) Report date to SNHD.

Investigations are ongoing; data are subject to change.

Reporting through 21NOV2022

Las Vegas zip codes include 89101, 89102, 89104, 89106, 89108, 89109, 89110, 89117, 89129, 89130, 89131, 89143, 89146, 89149, 89166, 89145, 89144, 89134, 89107, 89128, 89138.

COVID19 Deaths for Las Vegas, 7-Day Moving Average



Investigations are ongoing; data are subject to change.
Reporting through 21NOV2022

Las Vegas zip codes include 89101, 89102, 89104, 89106, 89108, 89109, 89110, 89117, 89129, 89130, 89131, 89143, 89146, 89149, 89166, 89145, 89144, 89134, 89107, 89128, 89138.

Table 4: New COVID19-Related Deaths and 7-Day Moving Average in Las Vegas, Previous Month

Week	Deaths	7-Day Moving Average
23OCT2022	2	2.29
30OCT2022	4	2.71
06NOV2022	3	2.86
13NOV2022	3	3.00

Note1: Date of Death is calculated as follows based on completed information:
A) COVID19 Case is reported as deceased B) COVID19 Case has a reported date of death.

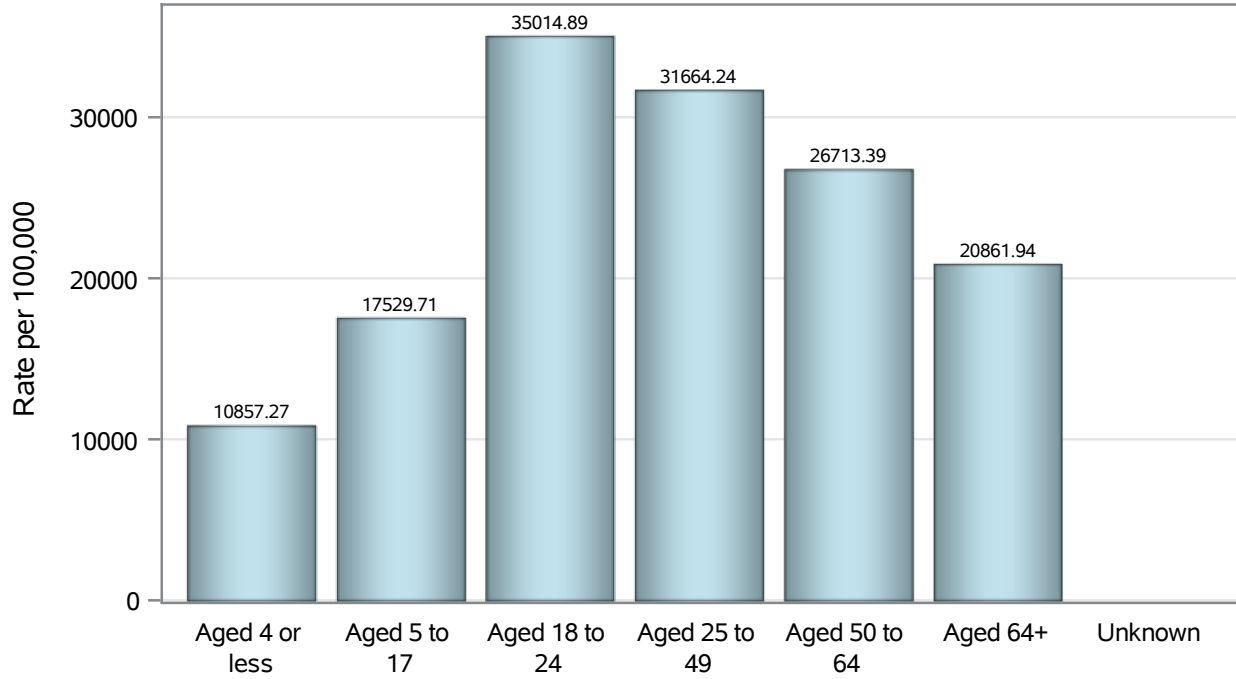
If date of death is missing, then the following is substituted temporarily, in order:
1) Disease onset date 2) Disease diagnosis date
3) Lab result collection date 4) Report date to SNHD.

Investigations are ongoing; data are subject to change.

Reporting through 21NOV2022

Las Vegas zip codes include 89101, 89102, 89104, 89106, 89108, 89109, 89110, 89117, 89129, 89130, 89131, 89143, 89146, 89149, 89166, 89145, 89144, 89134, 89107, 89128, 89138.

Case Age Rates in Las Vegas

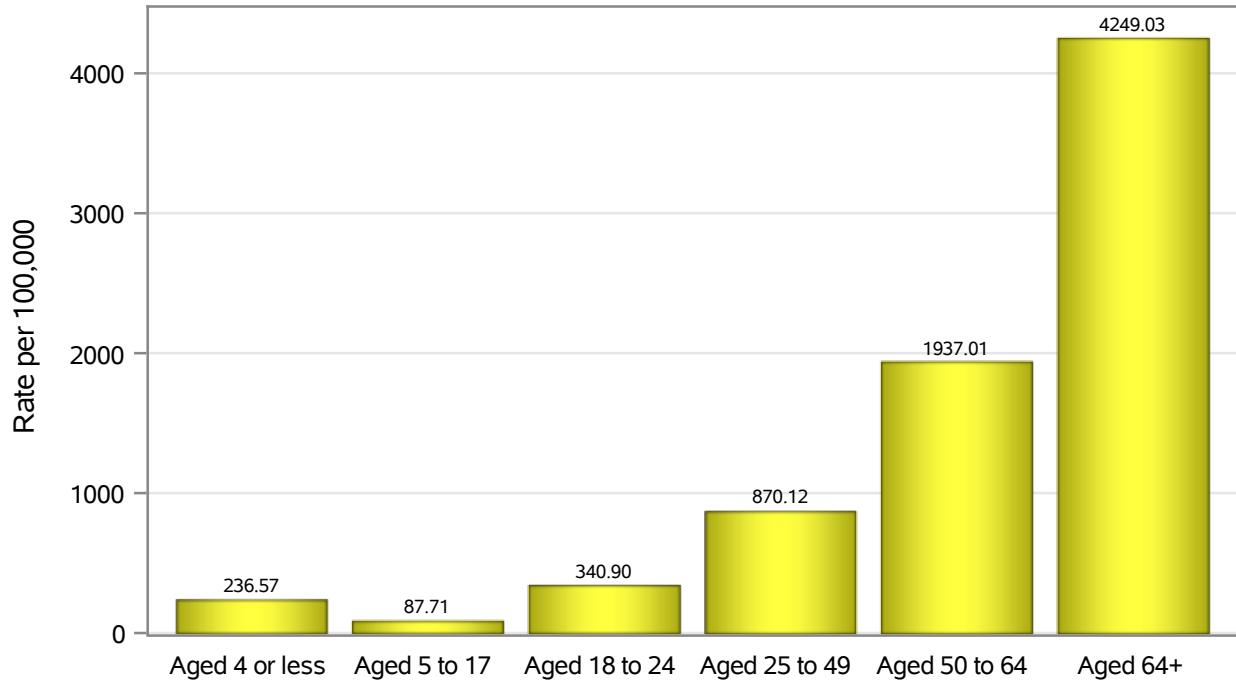


Investigations are ongoing; data are subject to change.

Reporting through 21NOV2022

Las Vegas zip codes include 89101, 89102, 89104, 89106, 89108, 89109, 89110, 89117, 89129, 89130, 89131, 89143, 89146, 89149, 89166, 89145, 89144, 89134, 89107, 89128, 89138.

Hospitalization Age Rates in Las Vegas

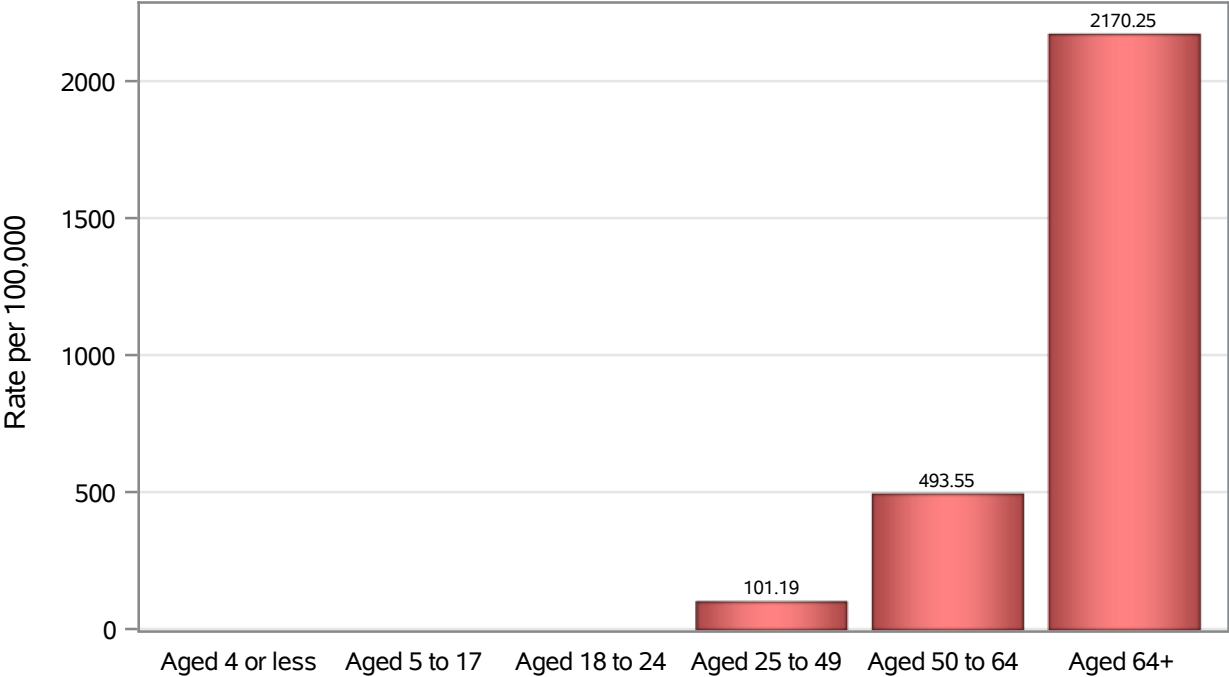


Investigations are ongoing; data are subject to change.

Reporting through 21NOV2022

Las Vegas zip codes include 89101, 89102, 89104, 89106, 89108, 89109, 89110, 89117, 89129, 89130, 89131, 89143, 89146, 89149, 89166, 89145, 89144, 89134, 89107, 89128, 89138.

Death Age Rates in Las Vegas



Investigations are ongoing; data are subject to change.

Reporting through 21NOV2022

Las Vegas zip codes include 89101, 89102, 89104, 89106, 89108, 89109, 89110, 89117, 89129, 89130, 89131, 89143, 89146, 89149, 89166, 89145, 89144, 89134, 89107, 89128, 89138.

Table 5: Age and COVID19 in Las Vegas

Case Status	Age Categories	N	%	Population	Rate per 100,000
Cases	Aged 4 or less	4819	2.7	44,385	10857
	Aged 5 to 17	21784	12.0	124269	17530
	Aged 18 to 24	20337	11.2	58,081	35015
	Aged 25 to 49	77294	42.7	244105	31664
	Aged 50 to 64	35181	19.4	131698	26713
	Aged 64+	21667	12.0	103859	20862
	Unknown	38	0.0	.	.
Hospitalizations	Aged 4 or less	105	1.1	44,385	236.57
	Aged 5 to 17	109	1.1	124269	87.71
	Aged 18 to 24	198	2.1	58,081	340.90
	Aged 25 to 49	2124	22.4	244105	870.12
	Aged 50 to 64	2551	26.9	131698	1937.0
	Aged 64+	4413	46.5	103859	4249.0
	Deaths	Aged 4 or less	1	0.0	44,385
Aged 5 to 17		2	0.1	124269	.
Aged 18 to 24		9	0.3	58,081	.
Aged 25 to 49		247	7.8	244105	101.19
Aged 50 to 64		650	20.6	131698	493.55
Aged 64+		2254	71.3	103859	2170.3

Note1: Population data source for calculating rate estimates: U.S. Census Bureau, ACS 5-year estimate.

Note2: Rates for categories with fewer than 12 cases are suppressed due to high relative standard error.

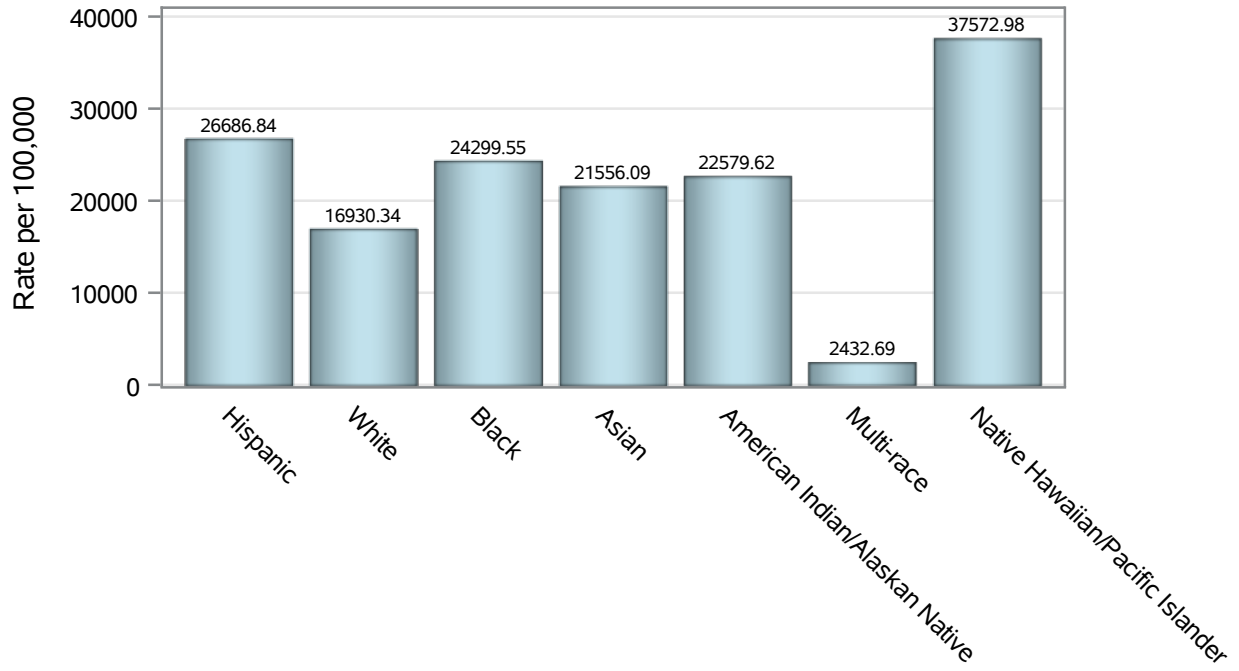
Note3: Hospitalizations are regardless of deceased status; Deaths are regardless of hospitalization status

Investigations are ongoing; data are subject to change.

Reporting through 21NOV2022

Las Vegas zip codes include 89101, 89102, 89104, 89106, 89108, 89109, 89110, 89117, 89129, 89130, 89131, 89143, 89146, 89149, 89166, 89145, 89144, 89134, 89107, 89128, 89138.

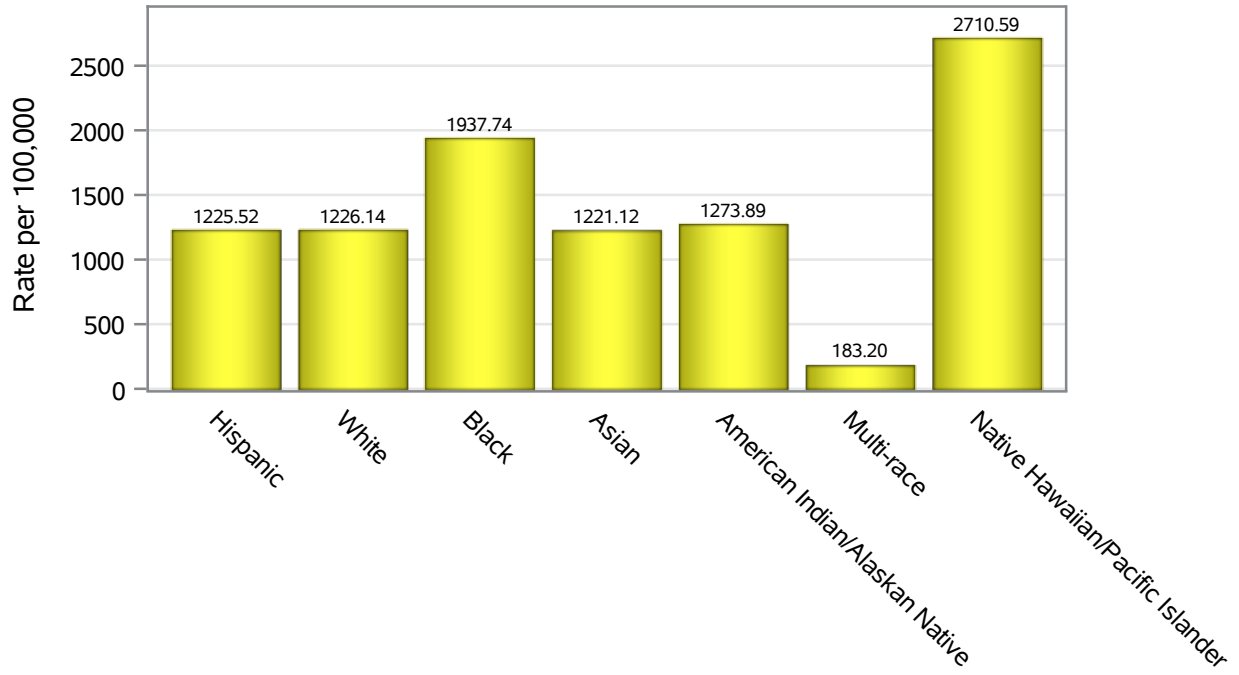
Case Race/Ethnicity Rates in Las Vegas



Investigations are ongoing; data are subject to change.
Reporting through 21NOV2022

Las Vegas zip codes include 89101, 89102, 89104, 89106, 89108, 89109, 89110, 89117, 89129, 89130, 89131, 89143, 89146, 89149, 89166, 89145, 89144, 89134, 89107, 89128, 89138.

Hospitalization Race/Ethnicity Rates in Las Vegas

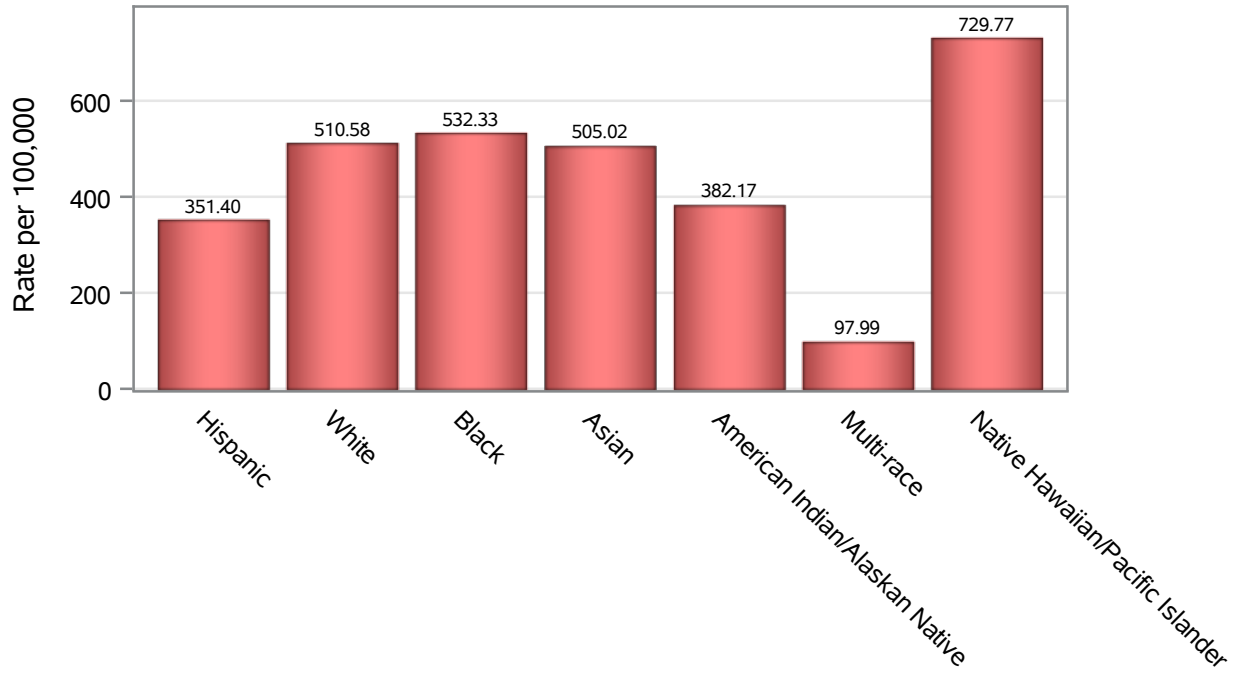


Investigations are ongoing; data are subject to change.

Reporting through 21NOV2022

Las Vegas zip codes include 89101, 89102, 89104, 89106, 89108, 89109, 89110, 89117, 89129, 89130, 89131, 89143, 89146, 89149, 89166, 89145, 89144, 89134, 89107, 89128, 89138.

Death Race/Ethnicity Rates in Las Vegas



Investigations are ongoing; data are subject to change.

Reporting through 21NOV2022

Las Vegas zip codes include 89101, 89102, 89104, 89106, 89108, 89109, 89110, 89117, 89129, 89130, 89131, 89143, 89146, 89149, 89166, 89145, 89144, 89134, 89107, 89128, 89138.

Table 6: Race/Ethnicity and COVID19 in Las Vegas

Case Status	Race Ethnicity Categories	N	%	Population	Rate per 100,000
Cases	Hispanic	60755	33.5	227659	26687
	White	53519	29.5	316113	16930
	Black	18898	10.4	77,771	24300
	Asian	10927	6.0	50,691	21556
	American Indian/Alaskan Native	709	0.4	3,140	22580
	Multi-race	571	0.3	23,472	2432.7
	Native Hawaiian/Pacific Islander	1802	1.0	4,796	37573
	Unknown	33939	18.7	.	.
Hospitalizations	Hispanic	2790	29.4	227659	1225.5
	White	3876	40.8	316113	1226.1
	Black	1507	15.9	77,771	1937.7
	Asian	619	6.5	50,691	1221.1
	American Indian/Alaskan Native	40	0.4	3,140	1273.9
	Multi-race	43	0.5	23,472	183.20
	Native Hawaiian/Pacific Islander	130	1.4	4,796	2710.6
	Unknown	495	5.2	.	.
Deaths	Hispanic	800	25.3	227659	351.40
	White	1614	51.0	316113	510.58
	Black	414	13.1	77,771	532.33
	Asian	256	8.1	50,691	505.02
	American Indian/Alaskan Native	12	0.4	3,140	382.17
	Multi-race	23	0.7	23,472	97.99
	Native Hawaiian/Pacific Islander	35	1.1	4,796	729.77
	Unknown	9	0.3	.	.

Note1: Population data source for calculating rate estimates: U.S. Census Bureau, ACS 5-year estimate.

Note2: Rates for categories with fewer than 12 cases are suppressed due to high relative standard error.

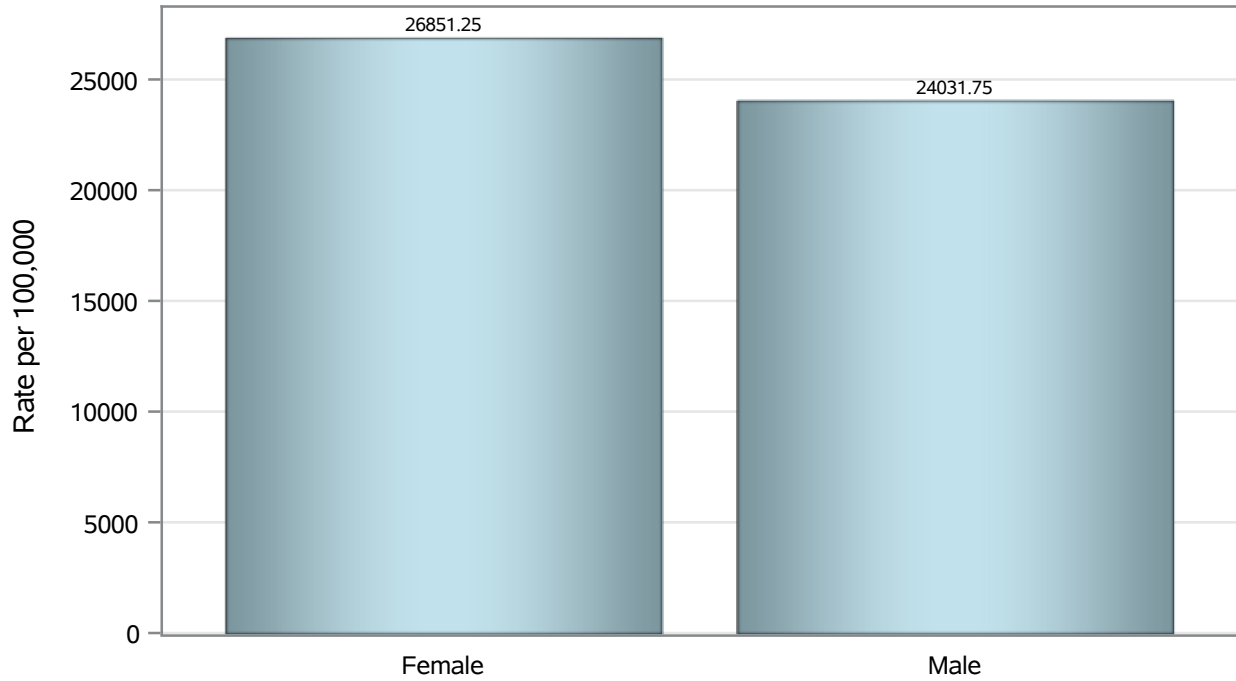
Note3: Hospitalizations are regardless of deceased status; Deaths are regardless of hospitalization status

Investigations are ongoing; data are subject to change.

Reporting through 21NOV2022

Las Vegas zip codes include 89101, 89102, 89104, 89106, 89108, 89109, 89110, 89117, 89129, 89130, 89131, 89143, 89146, 89149, 89166, 89145, 89144, 89134, 89107, 89128, 89138.

Case Birth Sex Rates in Las Vegas

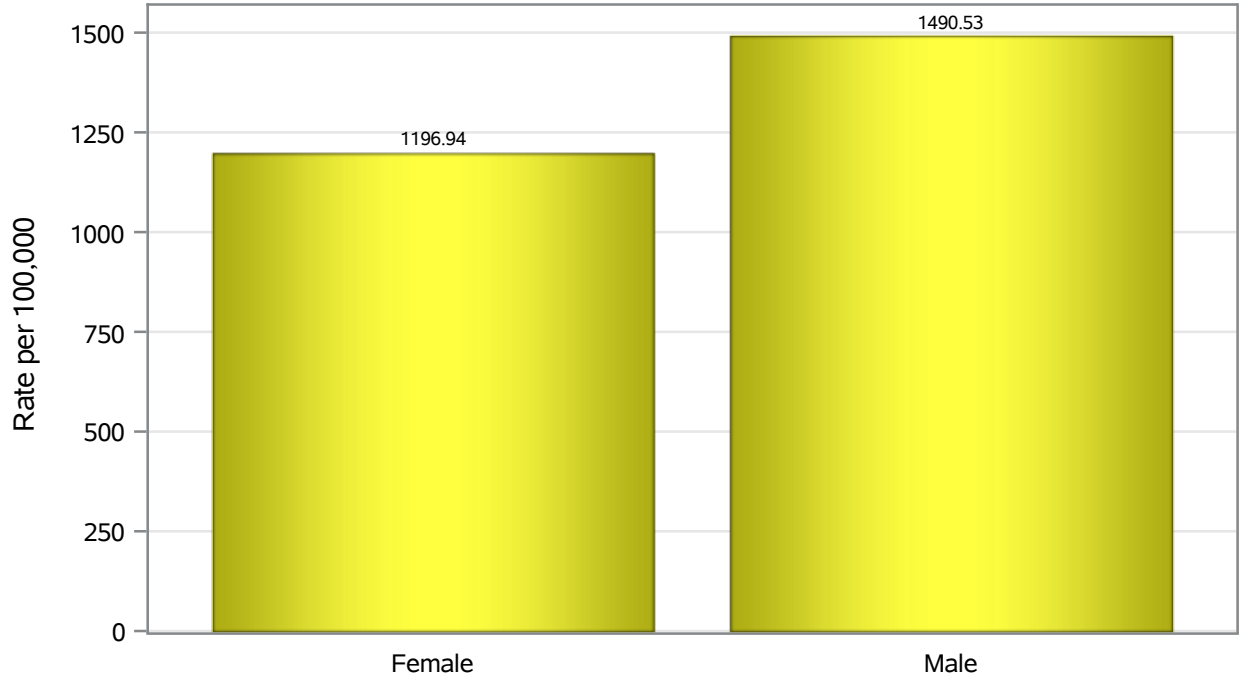


Investigations are ongoing; data are subject to change.

Reporting through 21NOV2022

Las Vegas zip codes include 89101, 89102, 89104, 89106, 89108, 89109, 89110, 89117, 89129, 89130, 89131, 89143, 89146, 89149, 89166, 89145, 89144, 89134, 89107, 89128, 89138.

Hospitalization Birth Sex Rates in Las Vegas

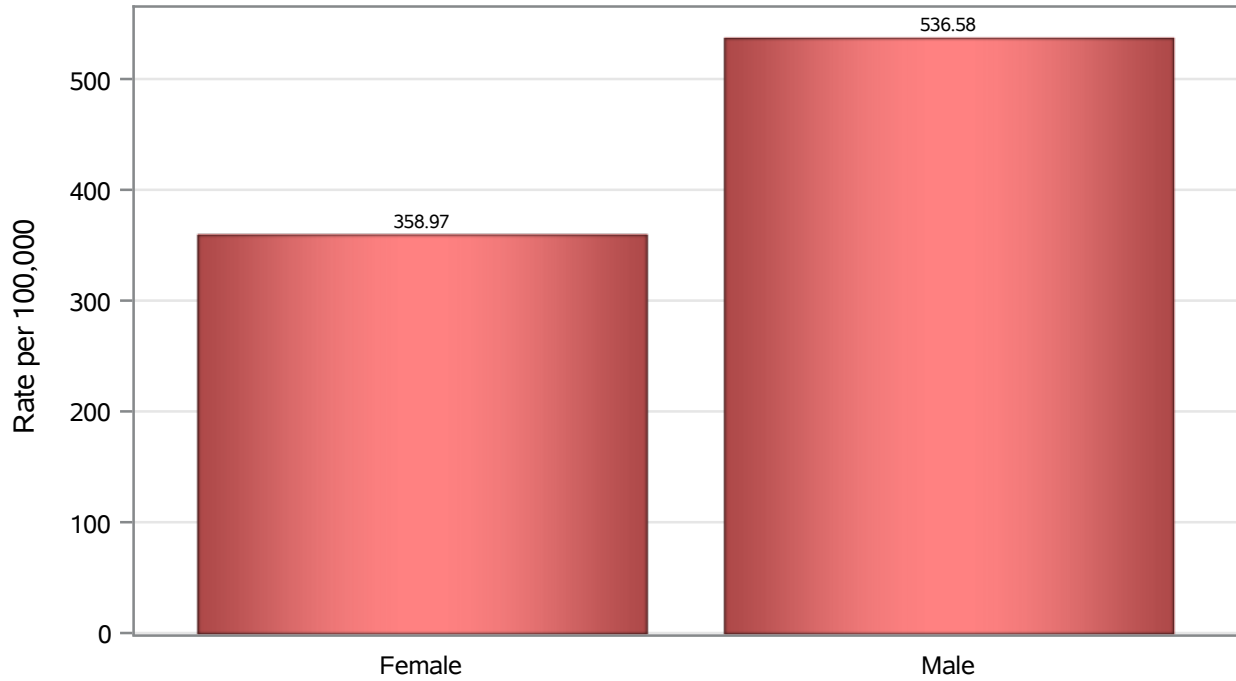


Investigations are ongoing; data are subject to change.

Reporting through 21NOV2022

Las Vegas zip codes include 89101, 89102, 89104, 89106, 89108, 89109, 89110, 89117, 89129, 89130, 89131, 89143, 89146, 89149, 89166, 89145, 89144, 89134, 89107, 89128, 89138.

Death Birth Sex Rates in Las Vegas



Investigations are ongoing; data are subject to change.

Reporting through 21NOV2022

Las Vegas zip codes include 89101, 89102, 89104, 89106, 89108, 89109, 89110, 89117, 89129, 89130, 89131, 89143, 89146, 89149, 89166, 89145, 89144, 89134, 89107, 89128, 89138.

Table 7: Birth Sex and COVID19 in Las Vegas

Case Status	Birth Sex Categories	N	%	Population	Rate per 100,000
Cases	Female	94848	52.4	353235	26851
	Male	84871	46.9	353162	24032
	Unknown	1401	0.8	.	.
Hospitalizations	Female	4228	44.5	353235	1196.9
	Male	5264	55.4	353162	1490.5
	Unknown	8	0.1	.	.
Deaths	Female	1268	40.1	353235	358.97
	Male	1895	59.9	353162	536.58

Note1: Population data source for calculating rate estimates: U.S. Census Bureau, ACS 5-year estimate.

Note2: Rates for categories with fewer than 12 cases are suppressed due to high relative standard error.

Note3: Hospitalizations are regardless of deceased status; Deaths are regardless of hospitalization status

Investigations are ongoing; data are subject to change.

Reporting through 21NOV2022

Las Vegas zip codes include 89101, 89102, 89104, 89106, 89108, 89109, 89110, 89117, 89129, 89130, 89131, 89143, 89146, 89149, 89166, 89145, 89144, 89134, 89107, 89128, 89138.