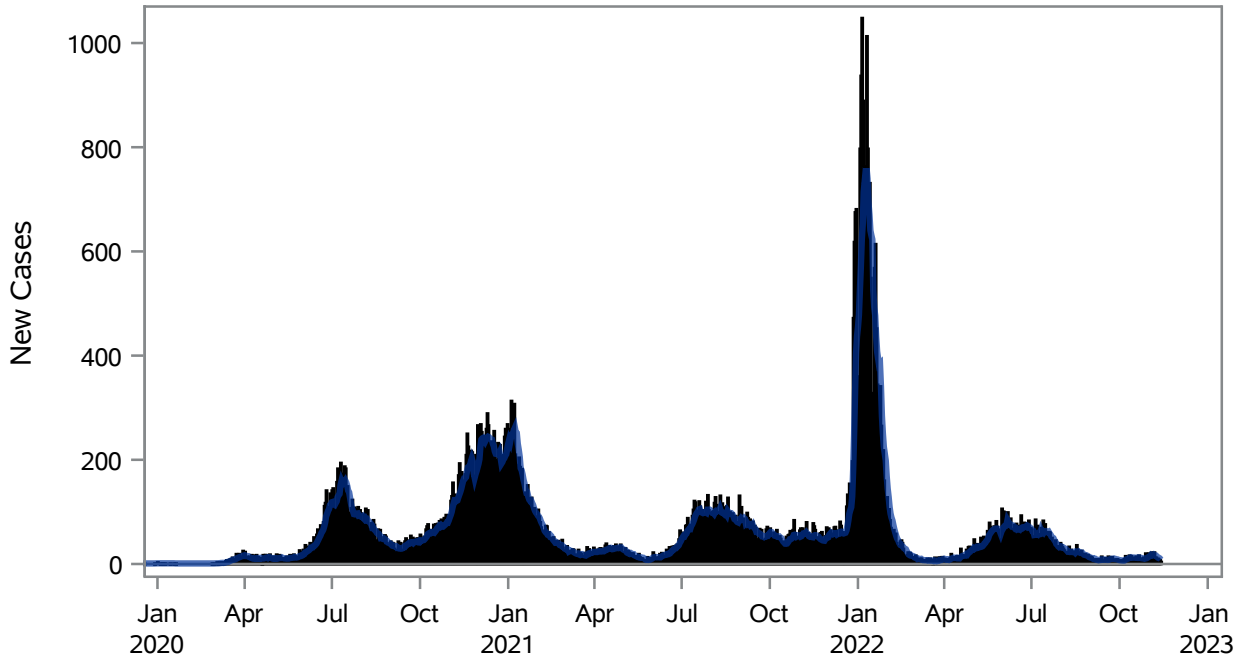


COVID19 Cases for North Las Vegas, 7-Day Moving Average



■ New Cases — 7-Day Moving Average

Investigations are ongoing; data are subject to change.

Reporting through 14NOV2022

North Las Vegas zip codes include 89030, 89031, 89032, 89033, 89036, 89081, 89084, 89085, 89086, 89087.

Table 1: New COVID19 Cases and 7-Day Moving Average in North Las Vegas, Previous Two Weeks

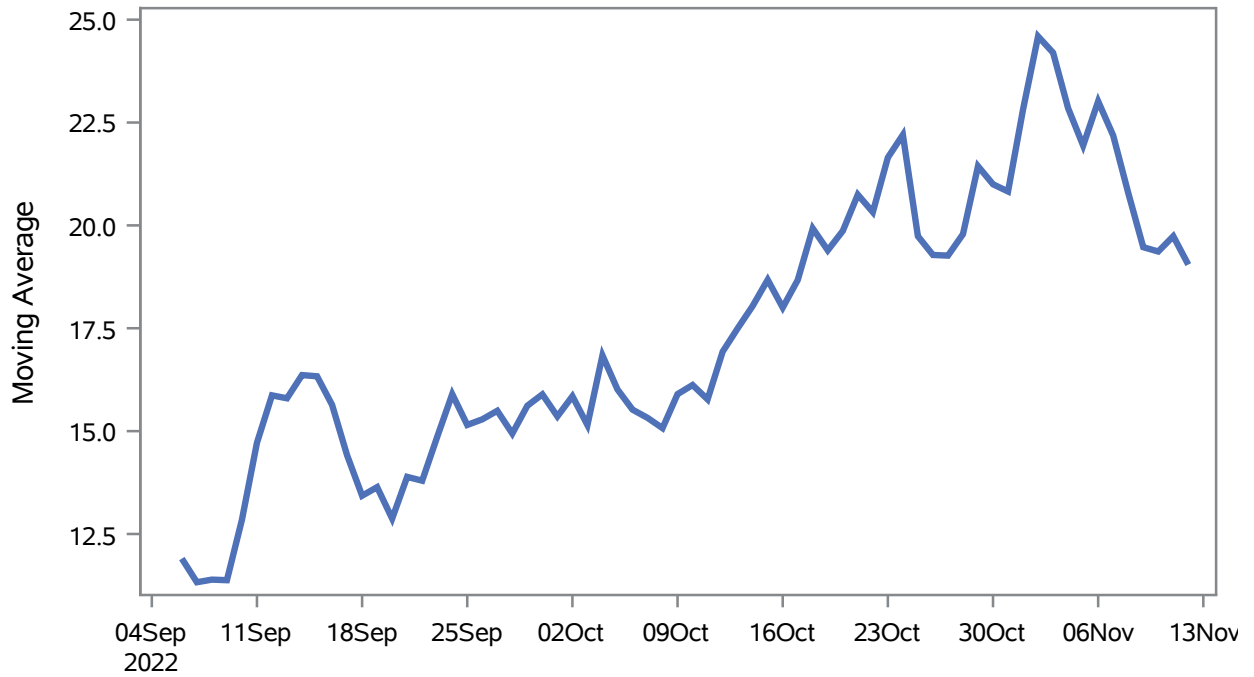
Date (Daily)	New Cases	7-Day Moving Average
01NOV2022	17	14.43
02NOV2022	20	15.57
03NOV2022	22	17.57
04NOV2022	11	16.29
05NOV2022	15	16.57
06NOV2022	22	18.14
07NOV2022	12	17.00
08NOV2022	12	16.29
09NOV2022	4	14.00
10NOV2022	10	12.29
11NOV2022	8	11.86
12NOV2022	7	10.71

Note1: Event Date is calculated as follows based on completed information:
1) Disease onset date 2) Disease diagnosis date 3) Lab result collection date 4) Report date to SNHD.

**Investigations are ongoing; data are subject to change.
Reporting through 14NOV2022**

North Las Vegas zip codes include 89030, 89031, 89032, 89033, 89036, 89081, 89084, 89085, 89086, 89087.

Percent of People Receiving COVID-19 Viral Tests Who Have Positive Results in North Las Vegas



Investigations are ongoing; data are subject to change.

Reporting through 14NOV2022

North Las Vegas zip codes include 89030, 89031, 89032, 89033, 89036, 89081, 89084, 89085, 89086, 89087.

Table 2: Percent of People Receiving COVID-19 Viral Tests Who Have Positive Results in North Las Vegas

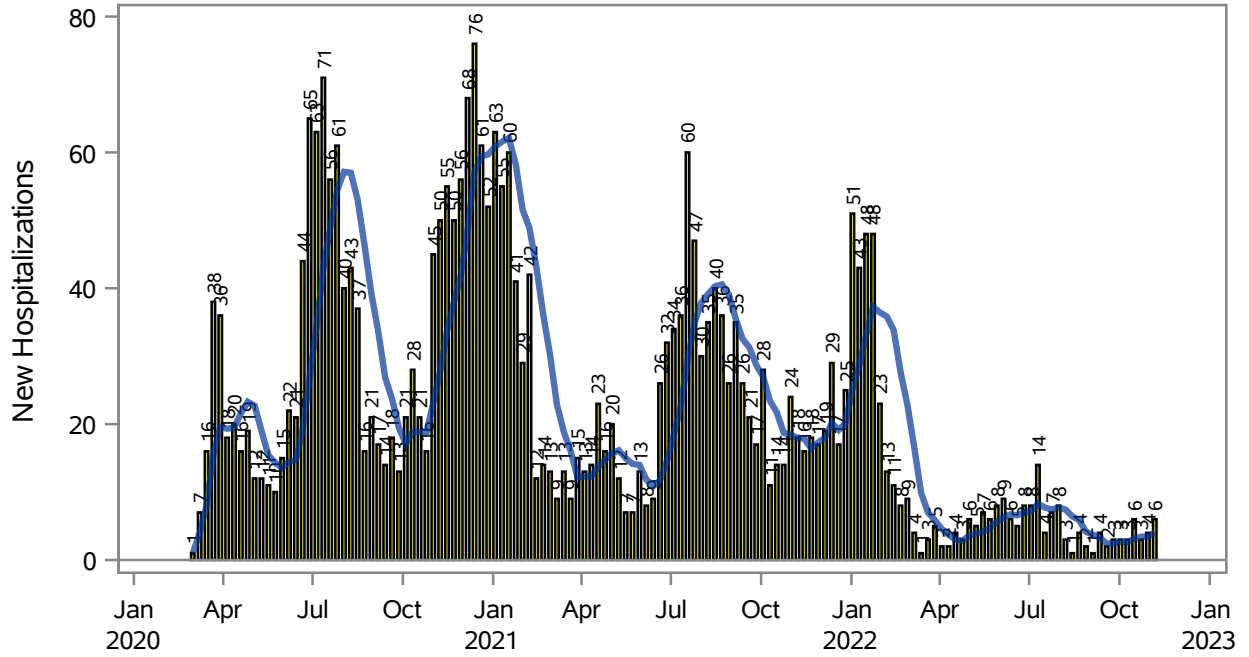
Collection Date	Positive	Negative	Equivocal	Total	% Positivity	7-Day Moving Average
29OCT2022	8	20		28	28.57	21.4
30OCT2022	7	28		35	20.00	21.0
31OCT2022	22	78	1	101	21.78	20.8
01NOV2022	37	113		150	24.67	22.8
02NOV2022	29	92		121	23.97	24.6
03NOV2022	27	115		142	19.01	24.2
04NOV2022	25	89		114	21.93	22.8
05NOV2022	18	63		81	22.22	21.9
06NOV2022	30	79		109	27.52	23.0
07NOV2022	23	120	1	144	15.97	22.2
08NOV2022	20	114		134	14.93	20.8
09NOV2022	15	87		102	14.71	19.5
10NOV2022	17	76		93	18.28	19.4
11NOV2022	13	40		53	24.53	19.7
12NOV2022	12	57		69	17.39	19.0

Note: Testing Data includes a 3 day delay

**Investigations are ongoing; data are subject to change.
Reporting through 14NOV2022**

North Las Vegas zip codes include 89030, 89031, 89032, 89033, 89036, 89081, 89084, 89085, 89086, 89087.

COVID19 Hospitalizations for North Las Vegas, 7-Day Moving Average



New Hospitalizations
 7-Day Moving Average

Investigations are ongoing; data are subject to change.
 Reporting through 14NOV2022

North Las Vegas zip codes include 89030, 89031, 89032, 89033, 89036, 89081, 89084, 89085, 89086, 89087.

Table 3: New COVID19-Related Hospitalizations and 7-Day Moving Average in North Las Vegas, previous month

Week	Hospitalizations	7-Day Moving Average
16OCT2022	6	3.14
23OCT2022	3	3.43
30OCT2022	4	3.43
06NOV2022	6	4.00

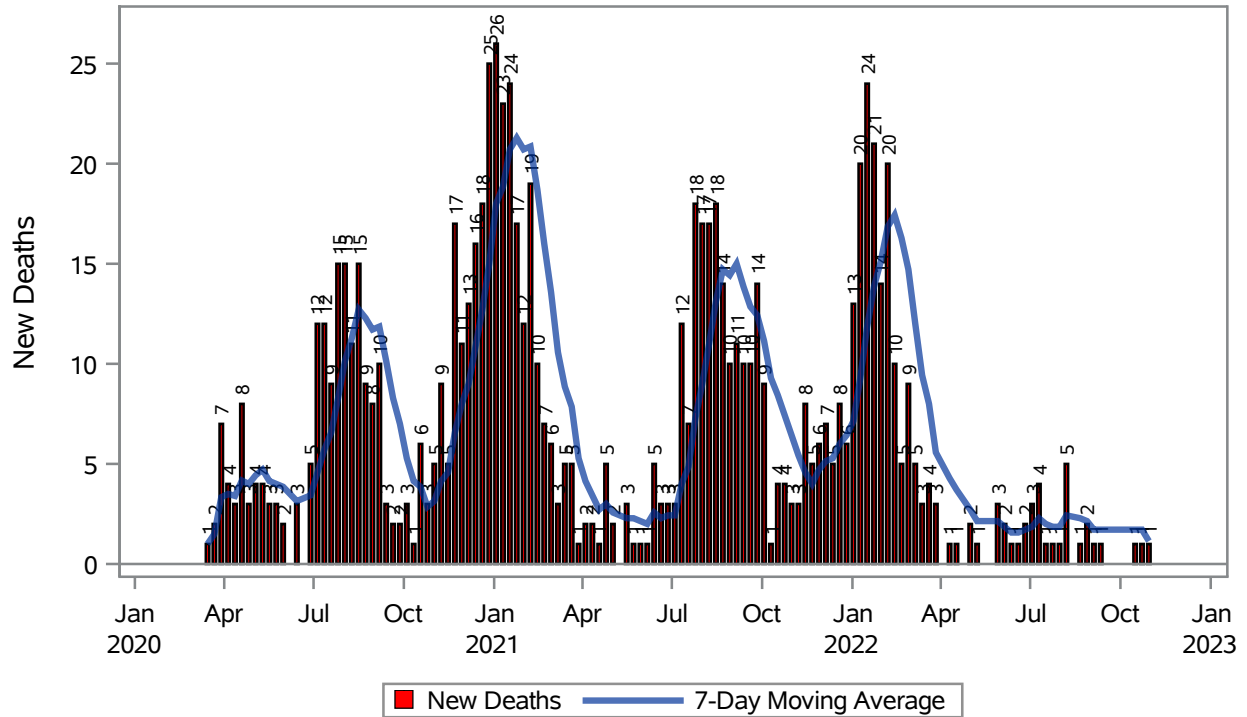
Note1: Admission Date is calculated as follows based on completed information:
A) COVID19 Case is hospitalized B) COVID19 Case has a hospital admission date.

If admission date is missing, then the following is substituted temporarily, in order:
1) Disease onset date 2) Disease diagnosis date 3) Lab result collection date 4) Report date to SNHD.

**Investigations are ongoing; data are subject to change.
Reporting through 14NOV2022**

North Las Vegas zip codes include 89030, 89031, 89032, 89033, 89036, 89081, 89084, 89085, 89086, 89087.

COVID19 Deaths for North Las Vegas, 7-Day Moving Average



Investigations are ongoing; data are subject to change.

Reporting through 14NOV2022

North Las Vegas zip codes include 89030, 89031, 89032, 89033, 89036, 89081, 89084, 89085, 89086, 89087.

Table 4: New COVID19-Related Deaths and 7-Day Moving Average in North Las Vegas, Previous Month

Week	Deaths	7-Day Moving Average
16OCT2022	1	1.71
23OCT2022	1	1.71
30OCT2022	1	1.14

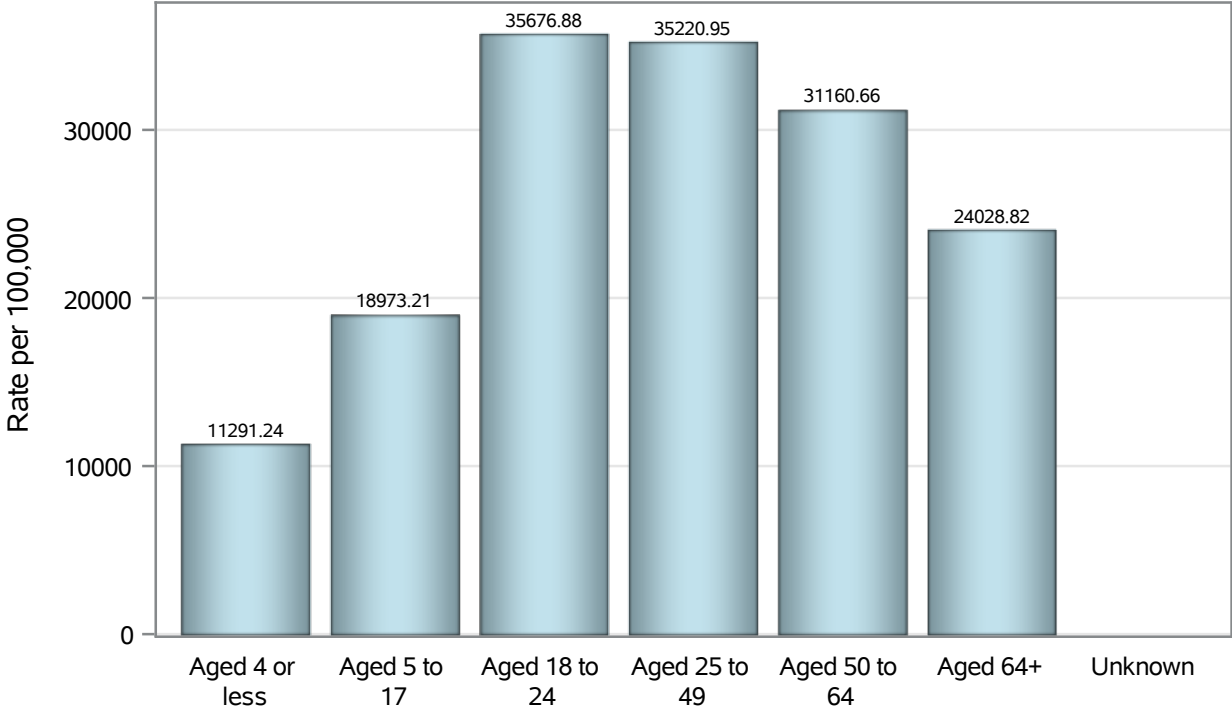
Note1: Date of Death is calculated as follows based on completed information:
A) COVID19 Case is reported as deceased B) COVID19 Case has a reported date of death.

If date of death is missing, then the following is substituted temporarily, in order:
1) Disease onset date 2) Disease diagnosis date
3) Lab result collection date 4) Report date to SNHD.

**Investigations are ongoing; data are subject to change.
Reporting through 14NOV2022**

North Las Vegas zip codes include 89030, 89031, 89032, 89033, 89036, 89081, 89084, 89085, 89086, 89087.

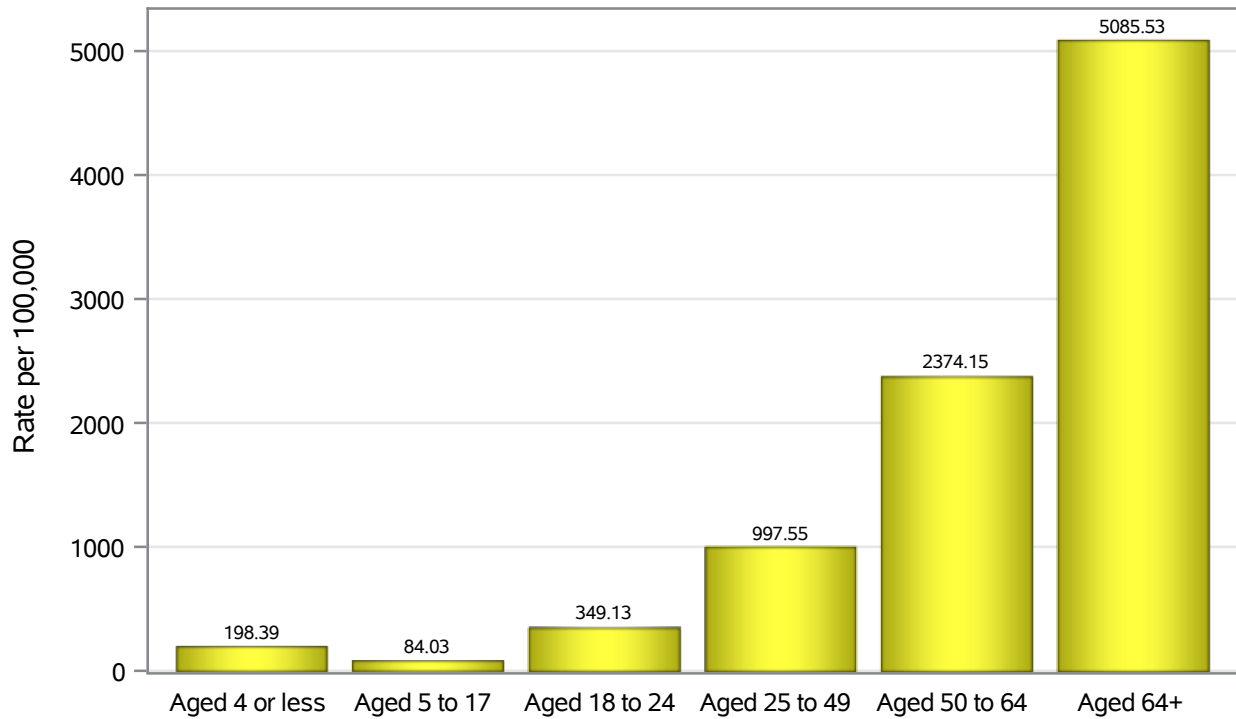
Case Age Rates in North Las Vegas



Investigations are ongoing; data are subject to change.
Reporting through 14NOV2022

North Las Vegas zip codes include 89030, 89031, 89032, 89033, 89036, 89081, 89084, 89085, 89086, 89087.

Hospitalization Age Rates in North Las Vegas

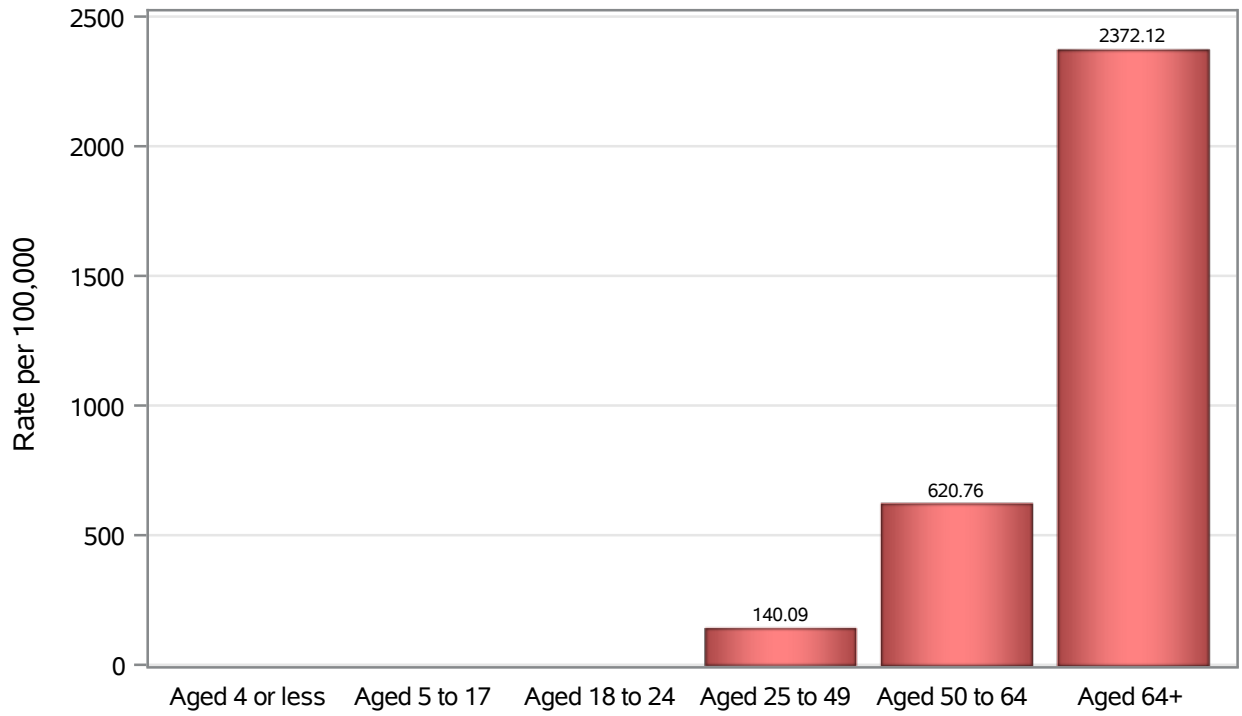


Investigations are ongoing; data are subject to change.

Reporting through 14NOV2022

North Las Vegas zip codes include 89030, 89031, 89032, 89033, 89036, 89081, 89084, 89085, 89086, 89087.

Death Age Rates in North Las Vegas



Investigations are ongoing; data are subject to change.

Reporting through 14NOV2022

North Las Vegas zip codes include 89030, 89031, 89032, 89033, 89036, 89081, 89084, 89085, 89086, 89087.

Table 5: Age and COVID19 in North Las Vegas

Case Status	Age Categories	N	%	Population	Rate per 100,000
Cases	Aged 4 or less	1992	3.0	17,642	11291
	Aged 5 to 17	9483	14.4	49,981	18973
	Aged 18 to 24	8175	12.4	22,914	35677
	Aged 25 to 49	29164	44.2	82,803	35221
	Aged 50 to 64	11445	17.3	36,729	31161
	Aged 64+	5703	8.6	23,734	24029
	Unknown	13	0.0	.	.
Hospitalizations	Aged 4 or less	35	1.1	17,642	198.39
	Aged 5 to 17	42	1.4	49,981	84.03
	Aged 18 to 24	80	2.6	22,914	349.13
	Aged 25 to 49	826	27.0	82,803	997.55
	Aged 50 to 64	872	28.5	36,729	2374.1
	Aged 64+	1207	39.4	23,734	5085.5
	Deaths	Aged 4 or less	2	0.2	17,642
Aged 5 to 17		1	0.1	49,981	.
Aged 18 to 24		2	0.2	22,914	.
Aged 25 to 49		116	12.7	82,803	140.09
Aged 50 to 64		228	25.0	36,729	620.76
Aged 64+		563	61.7	23,734	2372.1

Note1: Population data source for calculating rate estimates: U.S. Census Bureau, ACS 5-year estimate.

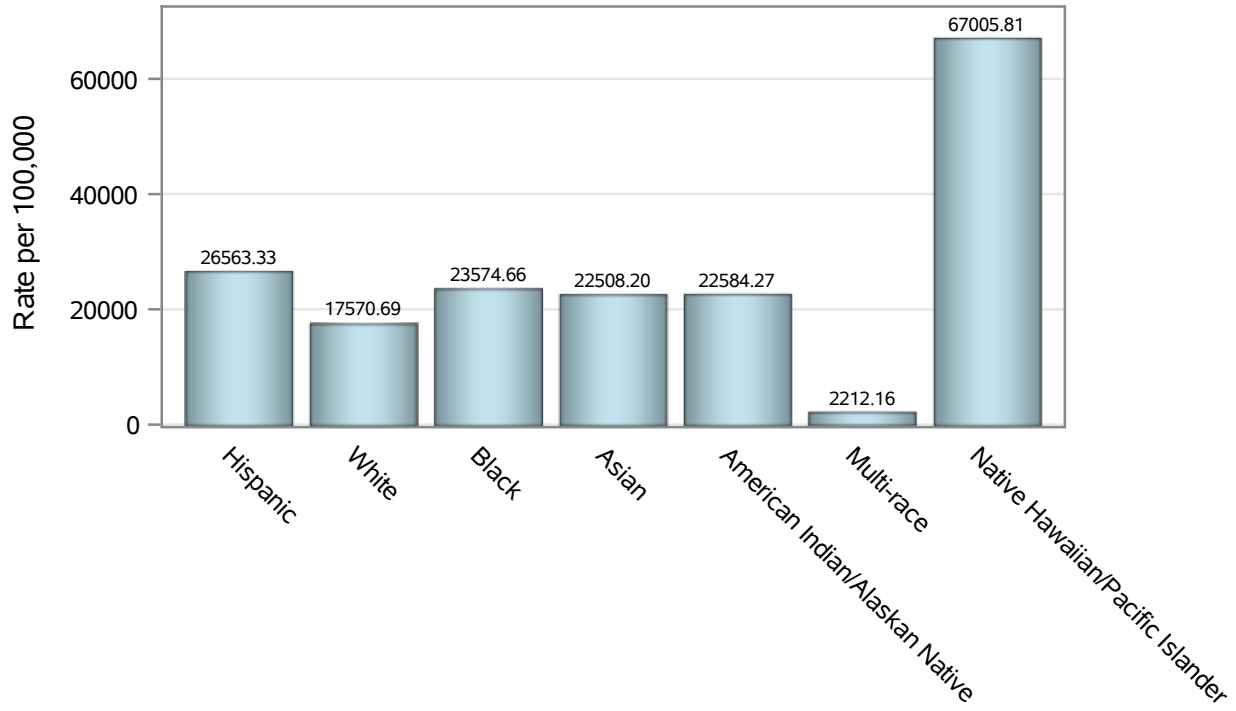
Note2: Rates for categories with fewer than 12 cases are suppressed due to high relative standard error.

Note3: Hospitalizations are regardless of deceased status; Deaths are regardless of hospitalization status

**Investigations are ongoing; data are subject to change.
Reporting through 14NOV2022**

North Las Vegas zip codes include 89030, 89031, 89032, 89033, 89036, 89081, 89084, 89085, 89086, 89087.

Case Race/Ethnicity Rates in North Las Vegas

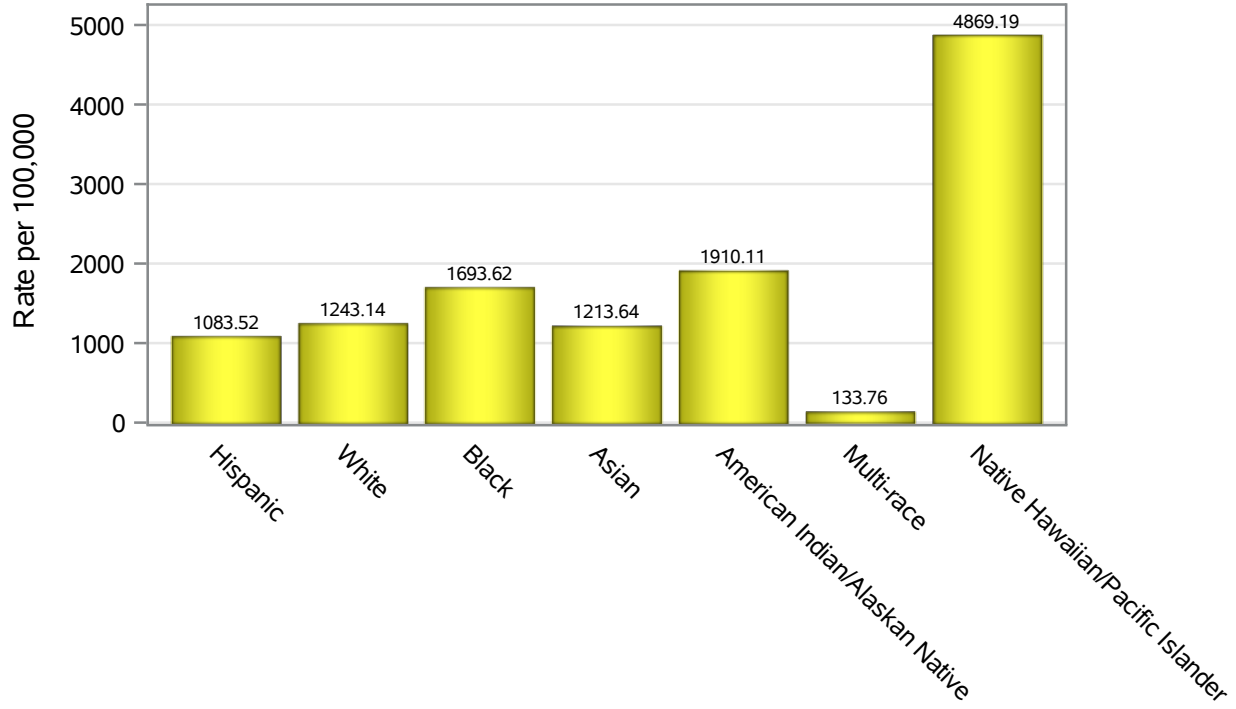


Investigations are ongoing; data are subject to change.

Reporting through 14NOV2022

North Las Vegas zip codes include 89030, 89031, 89032, 89033, 89036, 89081, 89084, 89085, 89086, 89087.

Hospitalization Race/Ethnicity Rates in North Las Vegas

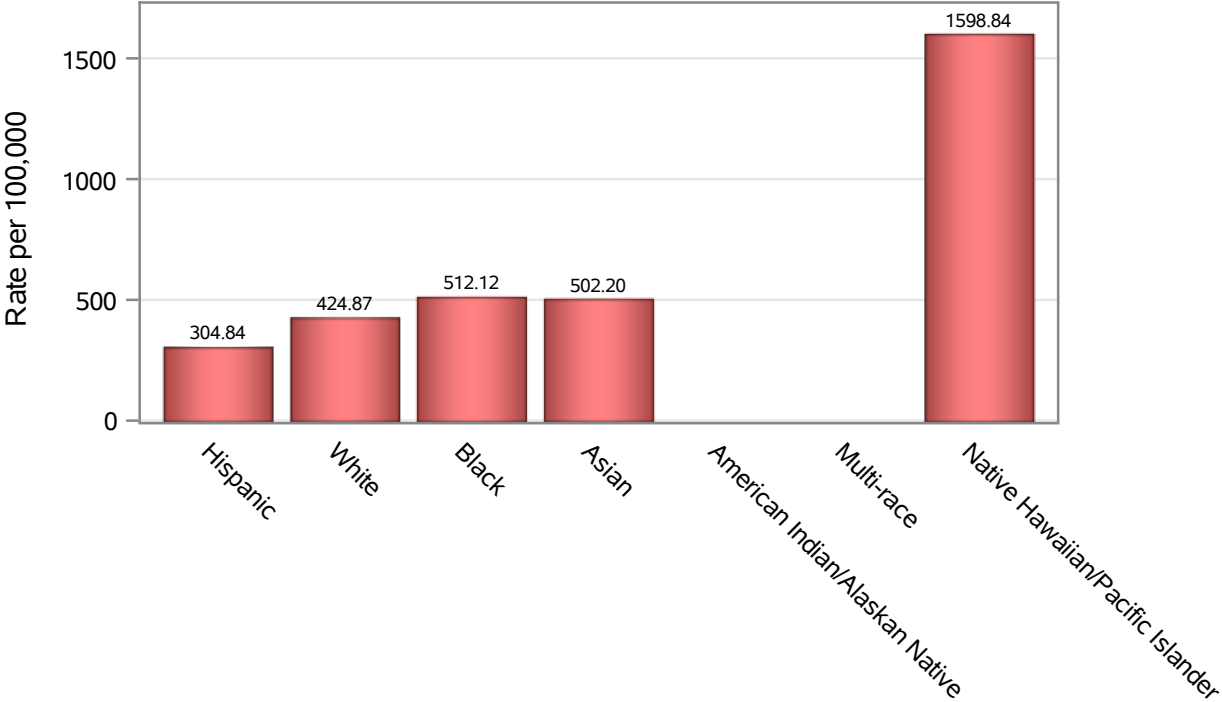


Investigations are ongoing; data are subject to change.

Reporting through 14NOV2022

North Las Vegas zip codes include 89030, 89031, 89032, 89033, 89036, 89081, 89084, 89085, 89086, 89087.

Death Race/Ethnicity Rates in North Las Vegas



Investigations are ongoing; data are subject to change.

Reporting through 14NOV2022

North Las Vegas zip codes include 89030, 89031, 89032, 89033, 89036, 89081, 89084, 89085, 89086, 89087.

Table 6: Race/Ethnicity and COVID19 in North Las Vegas

Case Status	Race Ethnicity Categories	N	%	Population	Rate per 100,000
Cases	Hispanic	25619	38.8	96,445	26563
	White	11166	16.9	63,549	17571
	Black	11094	16.8	47,059	23575
	Asian	3227	4.9	14,337	22508
	American Indian/Alaskan Native	201	0.3	890	22584
	Multi-race	215	0.3	9,719	2212.2
	Native Hawaiian/Pacific Islander	922	1.4	1,376	67006
	Unknown	13531	20.5	.	.
Hospitalizations	Hispanic	1045	34.1	96,445	1083.5
	White	790	25.8	63,549	1243.1
	Black	797	26.0	47,059	1693.6
	Asian	174	5.7	14,337	1213.6
	American Indian/Alaskan Native	17	0.6	890	1910.1
	Multi-race	13	0.4	9,719	133.76
	Native Hawaiian/Pacific Islander	67	2.2	1,376	4869.2
	Unknown	159	5.2	.	.
Deaths	Hispanic	294	32.2	96,445	304.84
	White	270	29.6	63,549	424.87
	Black	241	26.4	47,059	512.12
	Asian	72	7.9	14,337	502.20
	American Indian/Alaskan Native	6	0.7	890	.
	Multi-race	7	0.8	9,719	.
	Native Hawaiian/Pacific Islander	22	2.4	1,376	1598.8

Note1: Population data source for calculating rate estimates: U.S. Census Bureau, ACS 5-year estimate.

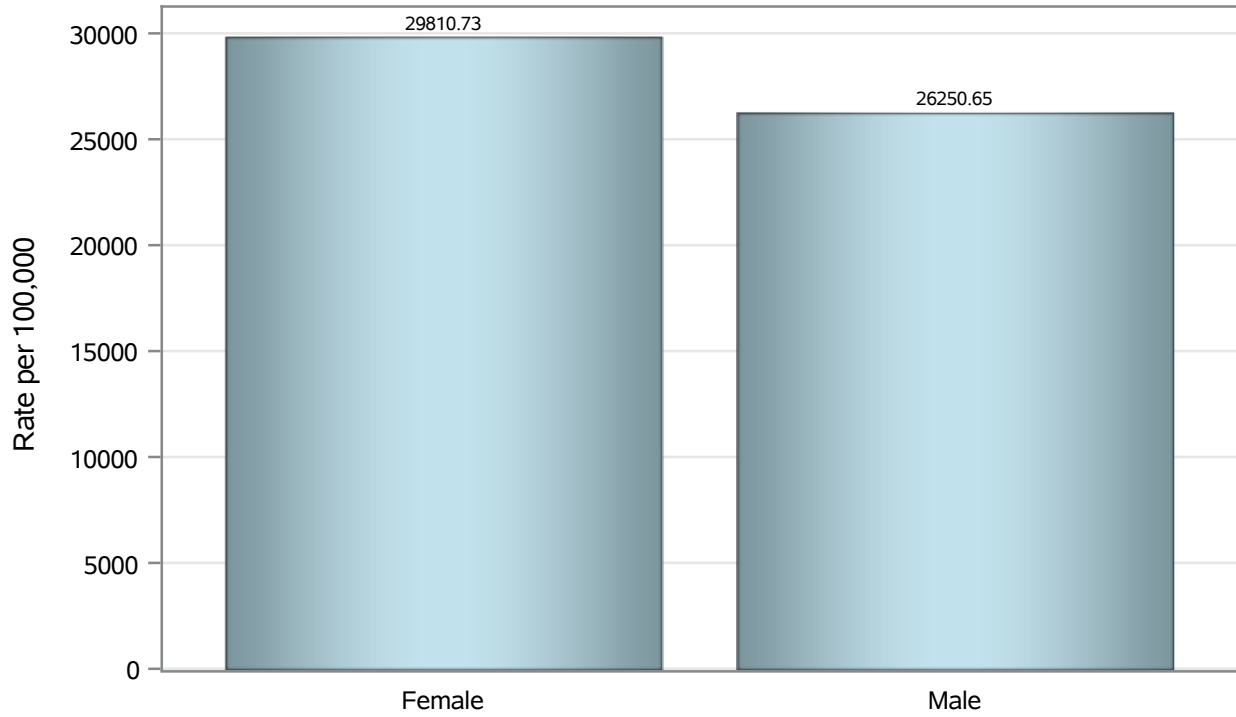
Note2: Rates for categories with fewer than 12 cases are suppressed due to high relative standard error.

Note3: Hospitalizations are regardless of deceased status; Deaths are regardless of hospitalization status

**Investigations are ongoing; data are subject to change.
Reporting through 14NOV2022**

North Las Vegas zip codes include 89030, 89031, 89032, 89033, 89036, 89081, 89084, 89085, 89086, 89087.

Case Birth Sex Rates in North Las Vegas

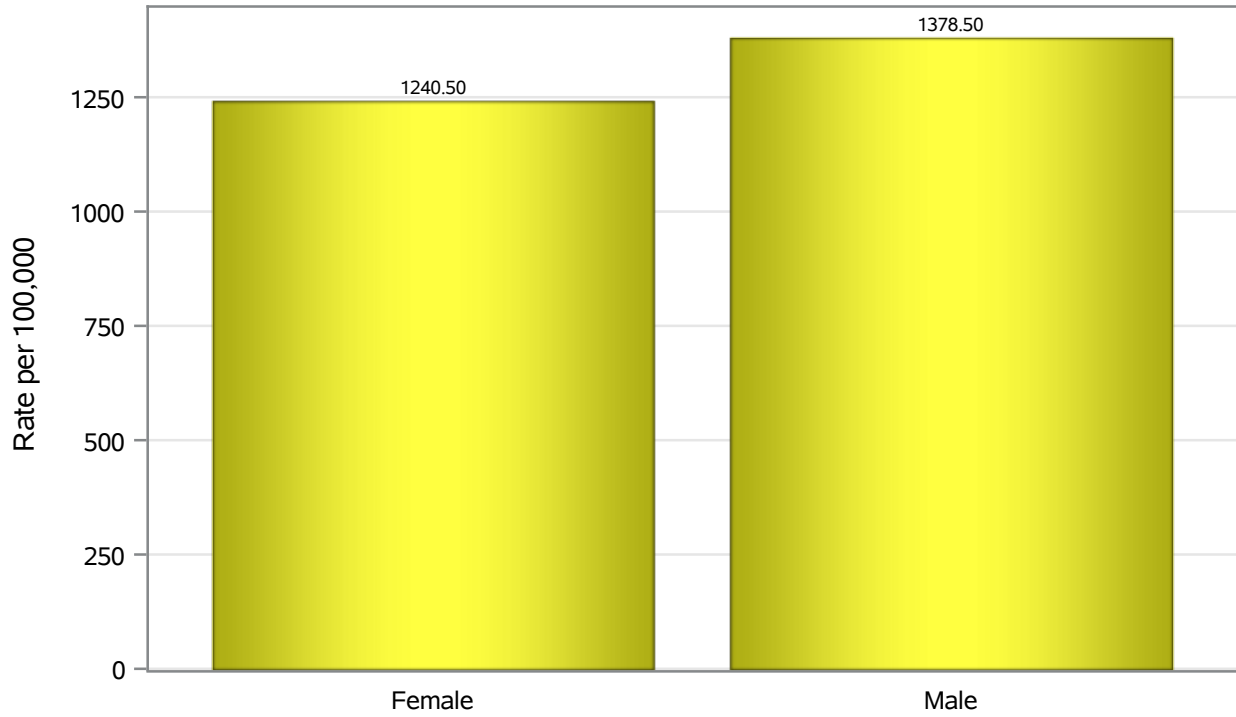


Investigations are ongoing; data are subject to change.

Reporting through 14NOV2022

North Las Vegas zip codes include 89030, 89031, 89032, 89033, 89036, 89081, 89084, 89085, 89086, 89087.

Hospitalization Birth Sex Rates in North Las Vegas

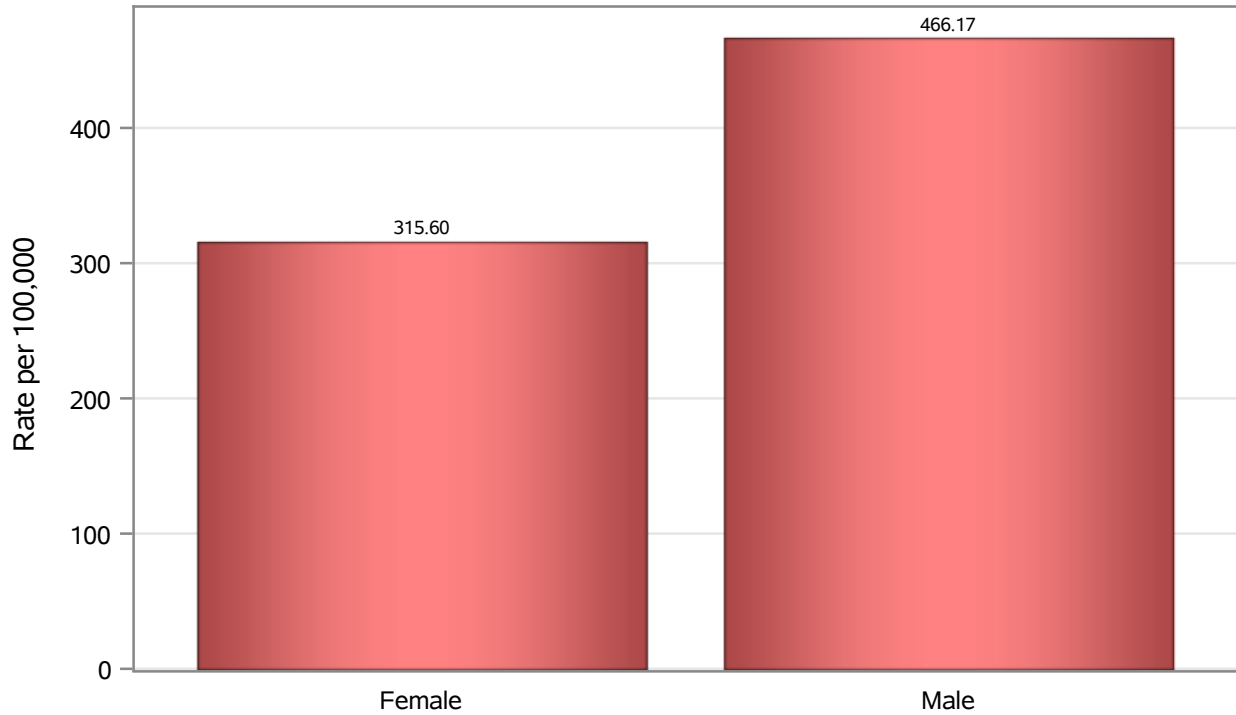


Investigations are ongoing; data are subject to change.

Reporting through 14NOV2022

North Las Vegas zip codes include 89030, 89031, 89032, 89033, 89036, 89081, 89084, 89085, 89086, 89087.

Death Birth Sex Rates in North Las Vegas



Investigations are ongoing; data are subject to change.

Reporting through 14NOV2022

North Las Vegas zip codes include 89030, 89031, 89032, 89033, 89036, 89081, 89084, 89085, 89086, 89087.

Table 7: Birth Sex and COVID19 in North Las Vegas

Case Status	Birth Sex Categories	N	%	Population	Rate per 100,000
Cases	Female	35422	53.7	118823	29811
	Male	30183	45.7	114980	26251
	Unknown	370	0.6	.	.
Hospitalizations	Female	1474	48.1	118823	1240.5
	Male	1585	51.8	114980	1378.5
	Unknown	3	0.1	.	.
Deaths	Female	375	41.1	118823	315.60
	Male	536	58.8	114980	466.17
	Unknown	1	0.1	.	.

Note1: Population data source for calculating rate estimates: U.S. Census Bureau, ACS 5-year estimate.

Note2: Rates for categories with fewer than 12 cases are suppressed due to high relative standard error.

Note3: Hospitalizations are regardless of deceased status; Deaths are regardless of hospitalization status

**Investigations are ongoing; data are subject to change.
Reporting through 14NOV2022**

North Las Vegas zip codes include 89030, 89031, 89032, 89033, 89036, 89081, 89084, 89085, 89086, 89087.