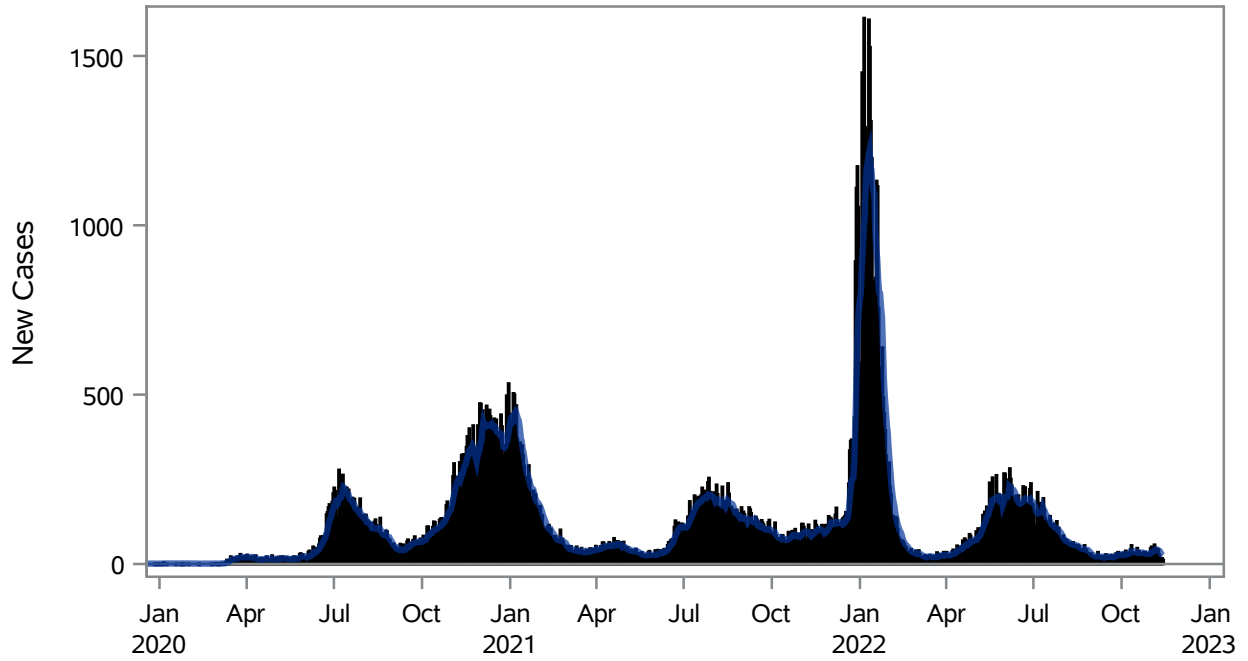


COVID19 Cases for Henderson, 7-Day Moving Average



■ New Cases — 7-Day Moving Average

Investigations are ongoing; data are subject to change.

Reporting through 14NOV2022

Henderson zip codes include 89002, 89011, 89012, 89014, 89015, 89044, 89052, 89074, 89119, 89120, 89122, 89123, 89124, 89183.

Table 1: New COVID19 Cases and 7-Day Moving Average in Henderson, Previous Two Weeks

Date (Daily)	New Cases	7-Day Moving Average
01NOV2022	51	33.86
02NOV2022	39	35.43
03NOV2022	32	35.43
04NOV2022	57	39.29
05NOV2022	46	42.29
06NOV2022	29	42.86
07NOV2022	44	42.57
08NOV2022	42	41.29
09NOV2022	27	39.57
10NOV2022	16	37.29
11NOV2022	16	31.43
12NOV2022	17	27.29

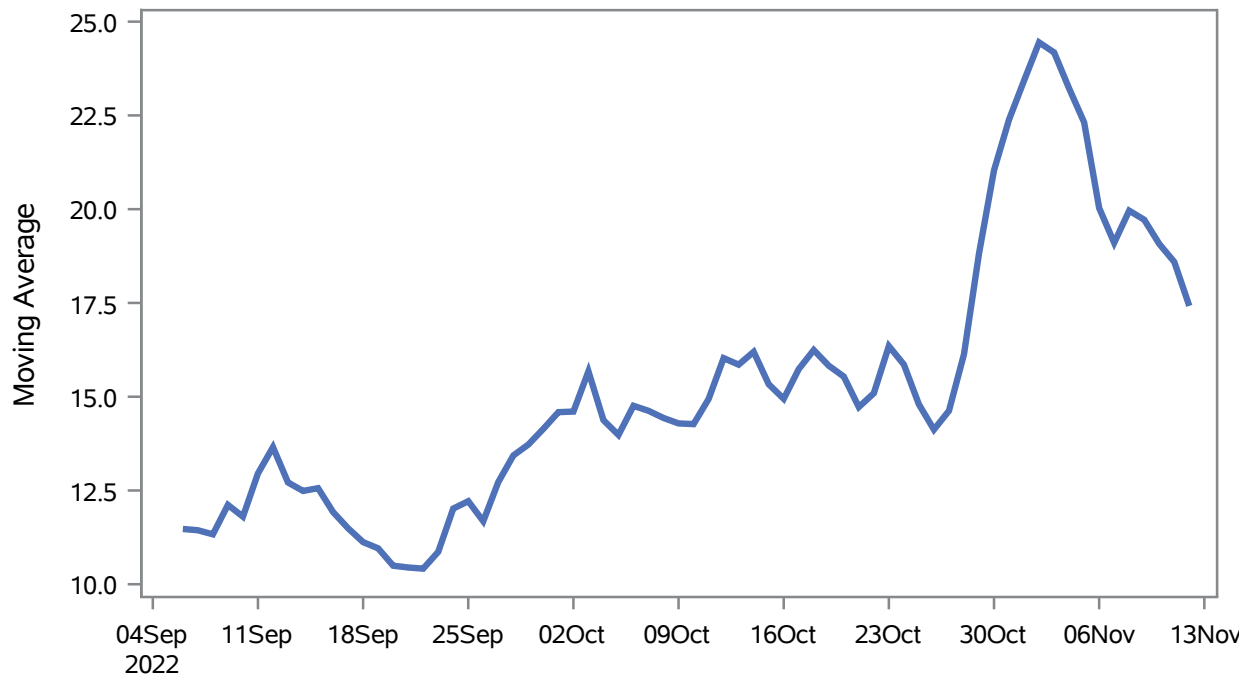
Note1: Event Date is calculated as follows based on completed information:
1) Disease onset date 2) Disease diagnosis date 3) Lab result collection date 4) Report date to SNHD.

Investigations are ongoing; data are subject to change.

Reporting through 14NOV2022

Henderson zip codes include 89002, 89011, 89012, 89014, 89015, 89044, 89052, 89074, 89119, 89120, 89122, 89123, 89124, 89183.

Percent of People Receiving COVID-19 Viral Tests Who Have Positive Results in Henderson



Investigations are ongoing; data are subject to change.

Reporting through 14NOV2022

Henderson zip codes include 89002, 89011, 89012, 89014, 89015, 89044, 89052, 89074, 89119, 89120, 89122, 89123, 89124, 89183.

Table 2: Percent of People Receiving COVID-19 Viral Tests Who Have Positive Results in Henderson

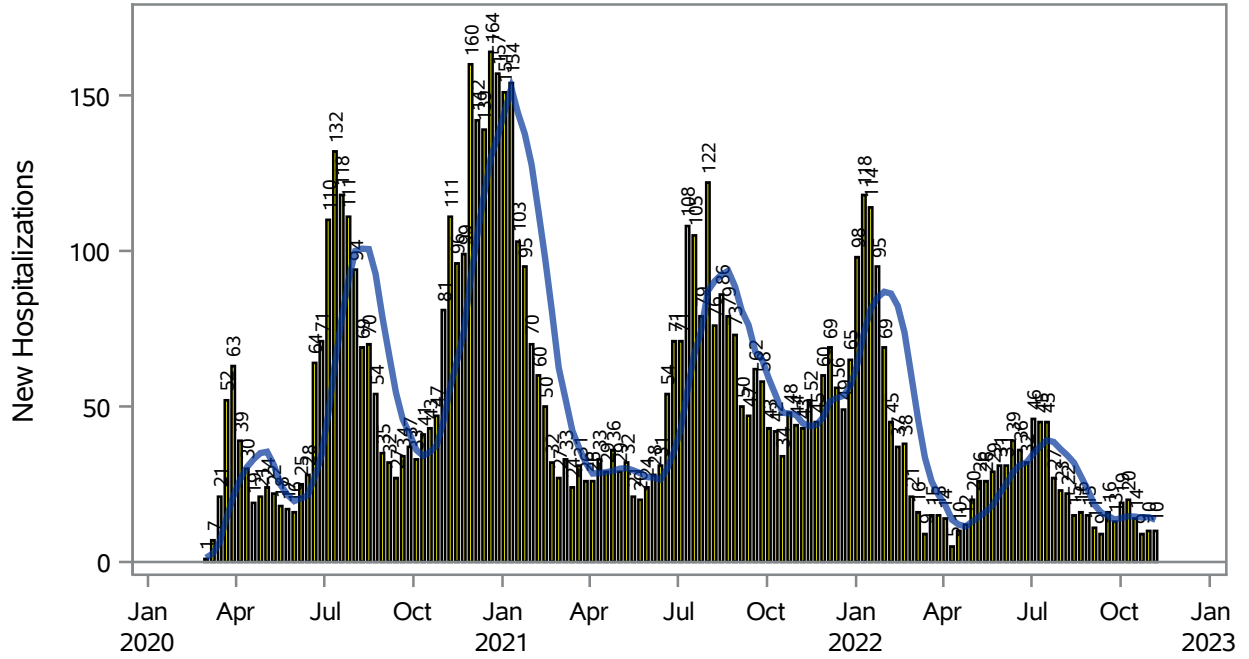
Collection Date	Positive	Negative	Equivocal	Total	% Positivity	7-Day Moving Average
29OCT2022	13	26		39	33.33	18.8
30OCT2022	13	24		37	35.14	21.0
31OCT2022	33	89		122	27.05	22.4
01NOV2022	39	190		229	17.03	23.4
02NOV2022	36	158	1	195	18.46	24.4
03NOV2022	31	156		187	16.58	24.2
04NOV2022	26	148		174	14.94	23.2
05NOV2022	37	100		137	27.01	22.3
06NOV2022	27	114		141	19.15	20.0
07NOV2022	52	201		253	20.55	19.1
08NOV2022	41	137		178	23.03	20.0
09NOV2022	29	144		173	16.76	19.7
10NOV2022	14	102		116	12.07	19.1
11NOV2022	11	84		95	11.58	18.6
12NOV2022	25	108		133	18.80	17.4

Note: Testing Data includes a 3 day delay

**Investigations are ongoing; data are subject to change.
Reporting through 14NOV2022**

Henderson zip codes include 89002, 89011, 89012, 89014, 89015, 89044, 89052, 89074, 89119, 89120, 89122, 89123, 89124, 89183.

COVID19 Hospitalizations for Henderson, 7-Day Moving Average



■ New Hospitalizations
 — 7-Day Moving Average

Investigations are ongoing; data are subject to change.

Reporting through 14NOV2022

Henderson zip codes include 89002, 89011, 89012, 89014, 89015, 89044, 89052, 89074, 89119, 89120, 89122, 89123, 89124, 89183.

Table 3: New COVID19-Related Hospitalizations and 7-Day Moving Average in Henderson, previous month

Week	Hospitalizations	7-Day Moving Average
16OCT2022	14	14.6
23OCT2022	9	14.3
30OCT2022	10	14.4
06NOV2022	10	13.6

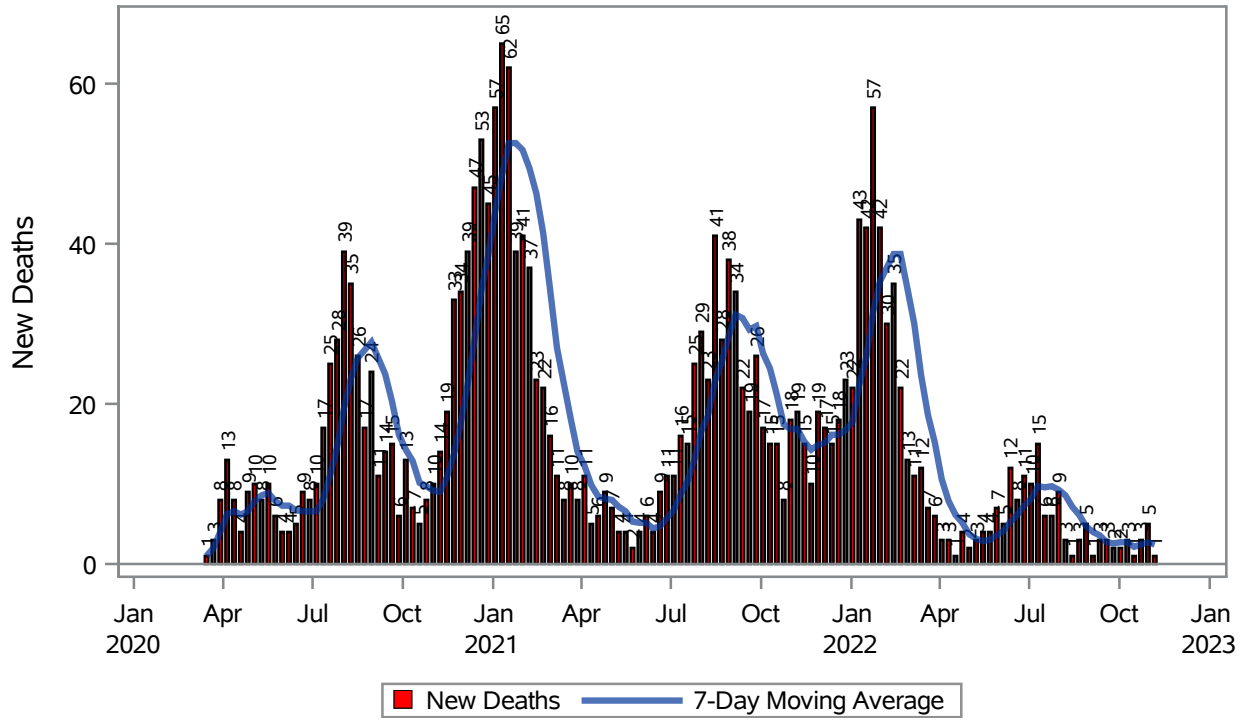
Note1: Admission Date is calculated as follows based on completed information:
A) COVID19 Case is hospitalized B) COVID19 Case has a hospital admission date.

If admission date is missing, then the following is substituted temporarily, in order:
1) Disease onset date 2) Disease diagnosis date 3) Lab result collection date 4) Report date to SNHD.

**Investigations are ongoing; data are subject to change.
Reporting through 14NOV2022**

Henderson zip codes include 89002, 89011, 89012, 89014, 89015, 89044, 89052, 89074, 89119, 89120, 89122, 89123, 89124, 89183.

COVID19 Deaths for Henderson, 7-Day Moving Average



Investigations are ongoing; data are subject to change.
Reporting through 14NOV2022

Henderson zip codes include 89002, 89011, 89012, 89014, 89015, 89044, 89052, 89074, 89119, 89120, 89122, 89123, 89124, 89183.

Table 4: New COVID19-Related Deaths and 7-Day Moving Average in Henderson, Previous Month

Week	Deaths	7-Day Moving Average
16OCT2022	1	2.14
23OCT2022	3	2.43
30OCT2022	5	2.71
06NOV2022	1	2.43

Note1: Date of Death is calculated as follows based on completed information:
A) COVID19 Case is reported as deceased B) COVID19 Case has a reported date of death.

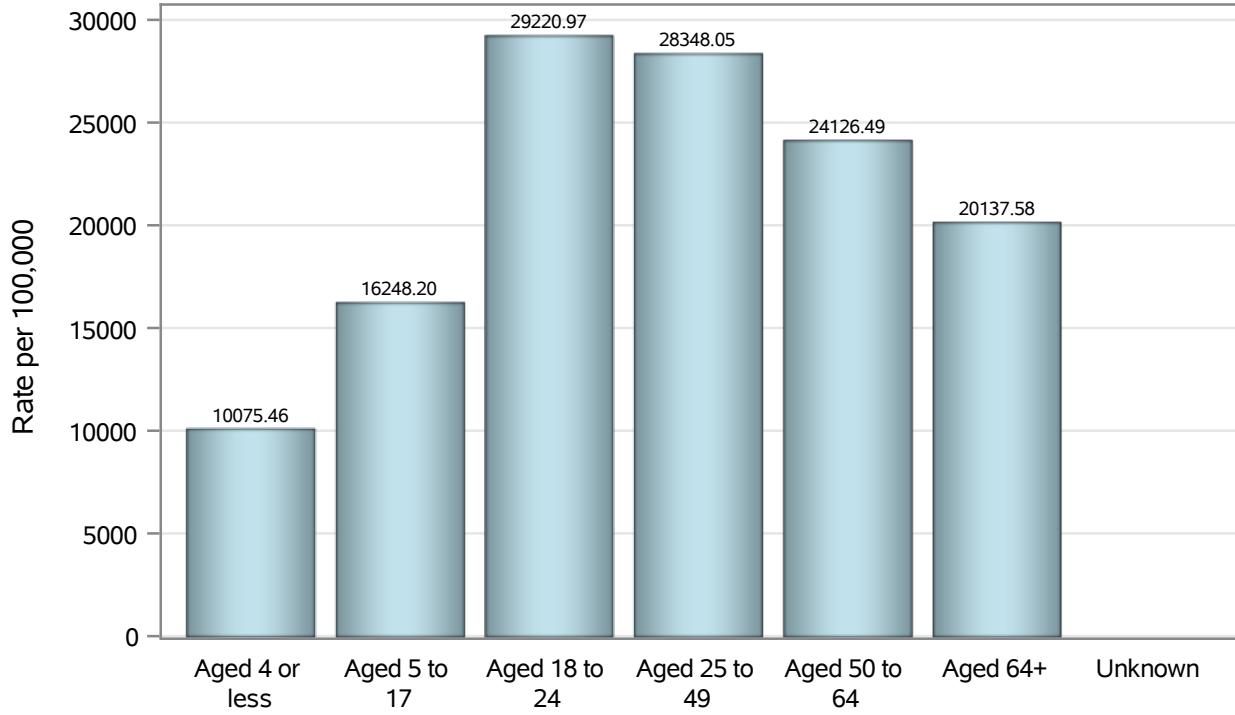
If date of death is missing, then the following is substituted temporarily, in order:
1) Disease onset date 2) Disease diagnosis date
3) Lab result collection date 4) Report date to SNHD.

Investigations are ongoing; data are subject to change.

Reporting through 14NOV2022

Henderson zip codes include 89002, 89011, 89012, 89014, 89015, 89044, 89052, 89074, 89119, 89120, 89122, 89123, 89124, 89183.

Case Age Rates in Henderson

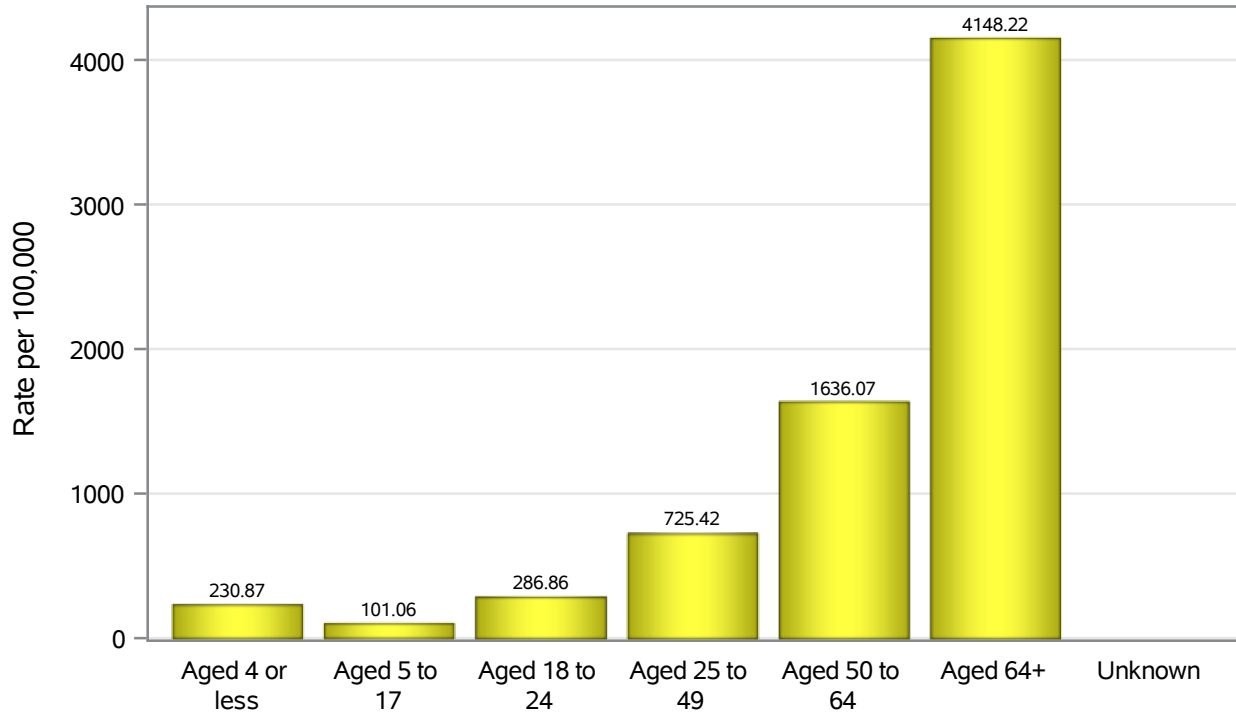


Investigations are ongoing; data are subject to change.

Reporting through 14NOV2022

Henderson zip codes include 89002, 89011, 89012, 89014, 89015, 89044, 89052, 89074, 89119, 89120, 89122, 89123, 89124, 89183.

Hospitalization Age Rates in Henderson

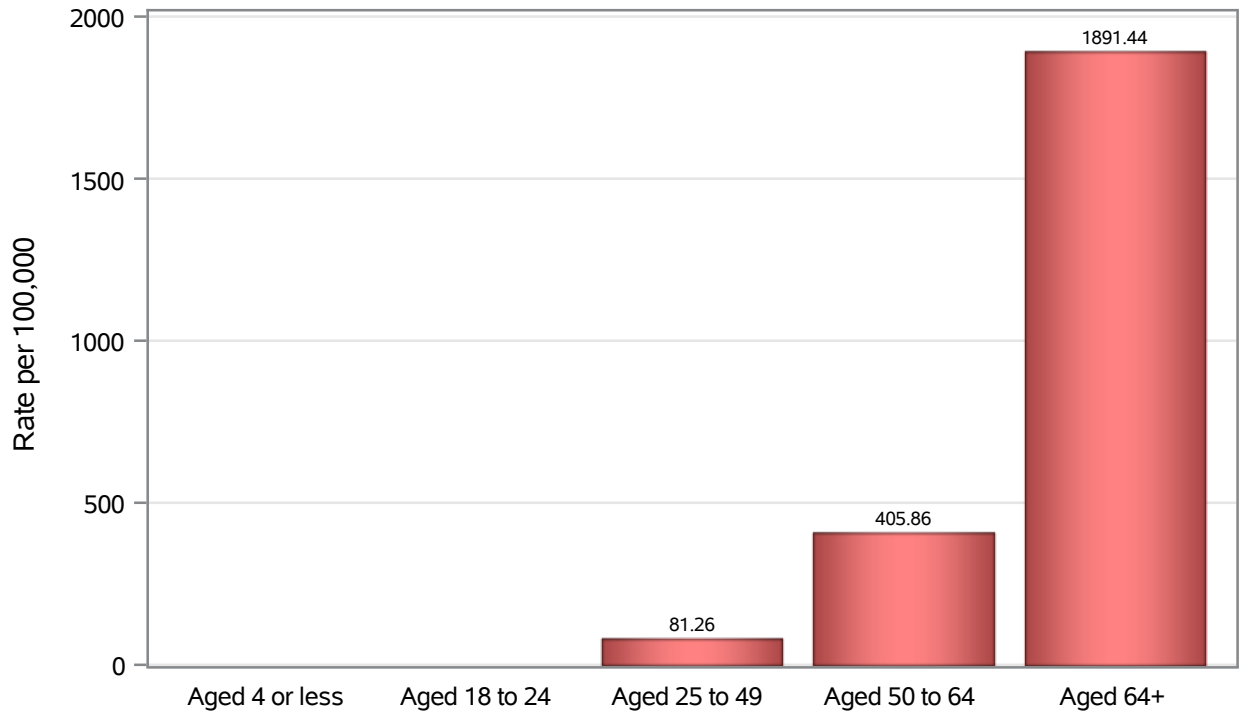


Investigations are ongoing; data are subject to change.

Reporting through 14NOV2022

Henderson zip codes include 89002, 89011, 89012, 89014, 89015, 89044, 89052, 89074, 89119, 89120, 89122, 89123, 89124, 89183.

Death Age Rates in Henderson



Investigations are ongoing; data are subject to change.

Reporting through 14NOV2022

Henderson zip codes include 89002, 89011, 89012, 89014, 89015, 89044, 89052, 89074, 89119, 89120, 89122, 89123, 89124, 89183.

Table 5: Age and COVID19 in Henderson

Case Status	Age Categories	N	%	Population	Rate per 100,000
Cases	Aged 4 or less	2924	2.3	29,021	10075
	Aged 5 to 17	13344	10.7	82,126	16248
	Aged 18 to 24	12937	10.4	44,273	29221
	Aged 25 to 49	53029	42.6	187064	28348
	Aged 50 to 64	24789	19.9	102746	24126
	Aged 64+	17418	14.0	86,495	20138
	Unknown	24	0.0	.	.
Hospitalizations	Aged 4 or less	67	1.0	29,021	230.87
	Aged 5 to 17	83	1.2	82,126	101.06
	Aged 18 to 24	127	1.8	44,273	286.86
	Aged 25 to 49	1357	19.7	187064	725.42
	Aged 50 to 64	1681	24.3	102746	1636.1
	Aged 64+	3588	52.0	86,495	4148.2
	Unknown	1	0.0	.	.
Deaths	Aged 4 or less	1	0.0	29,021	.
	Aged 18 to 24	3	0.1	44,273	.
	Aged 25 to 49	152	6.9	187064	81.26
	Aged 50 to 64	417	18.9	102746	405.86
	Aged 64+	1636	74.1	86,495	1891.4

Note1: Population data source for calculating rate estimates: U.S. Census Bureau, ACS 5-year estimate.

Note2: Rates for categories with fewer than 12 cases are suppressed due to high relative standard error.

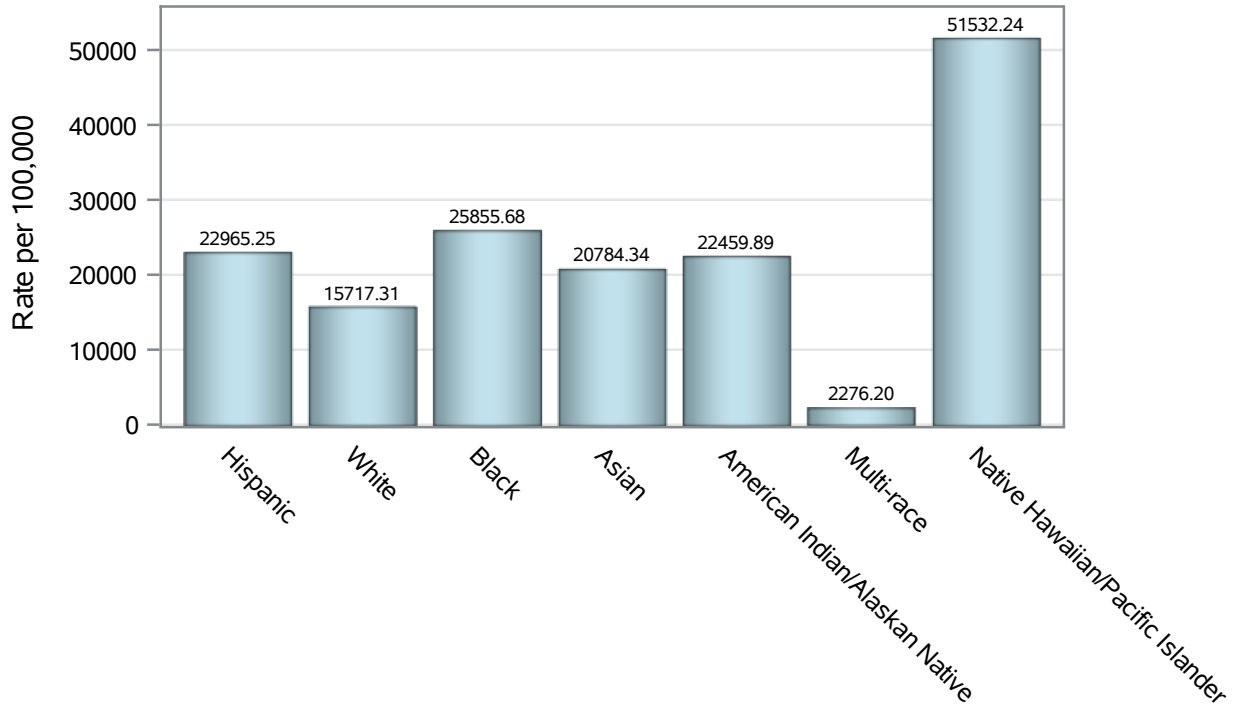
Note3: Hospitalizations are regardless of deceased status; Deaths are regardless of hospitalization status

Investigations are ongoing; data are subject to change.

Reporting through 14NOV2022

Henderson zip codes include 89002, 89011, 89012, 89014, 89015, 89044, 89052, 89074, 89119, 89120, 89122, 89123, 89124, 89183.

Case Race/Ethnicity Rates in Henderson

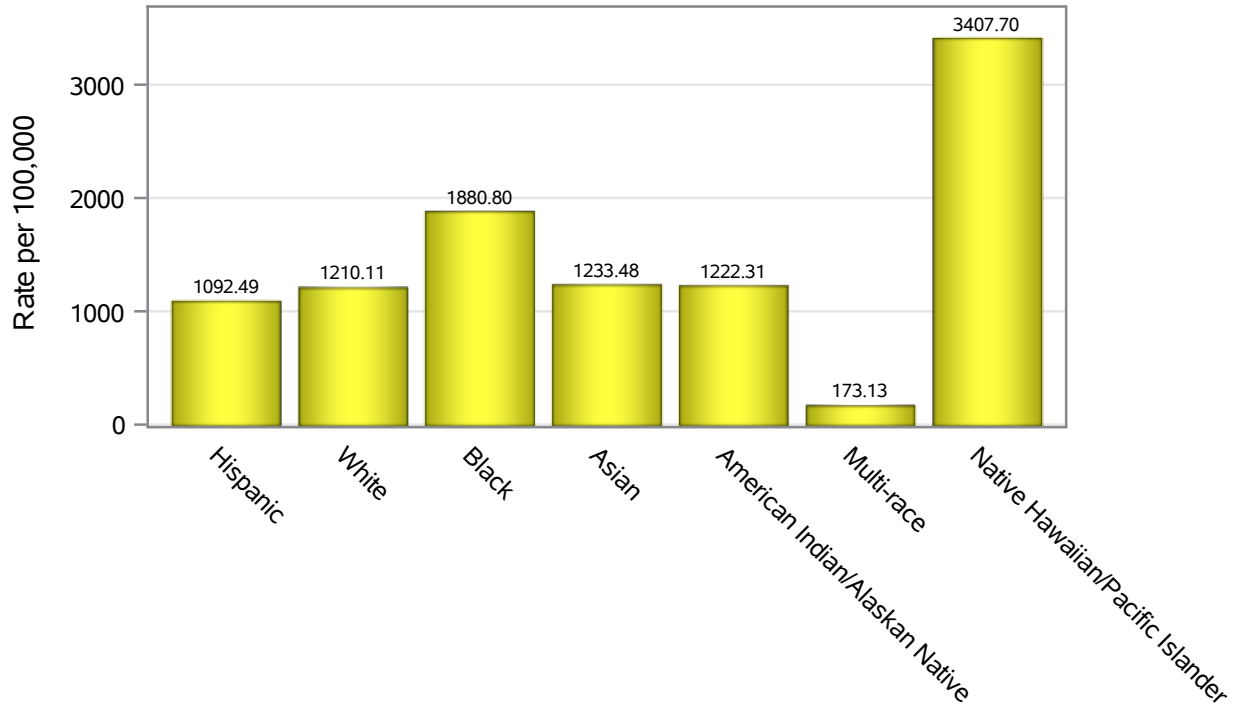


Investigations are ongoing; data are subject to change.

Reporting through 14NOV2022

Henderson zip codes include 89002, 89011, 89012, 89014, 89015, 89044, 89052, 89074, 89119, 89120, 89122, 89123, 89124, 89183.

Hospitalization Race/Ethnicity Rates in Henderson

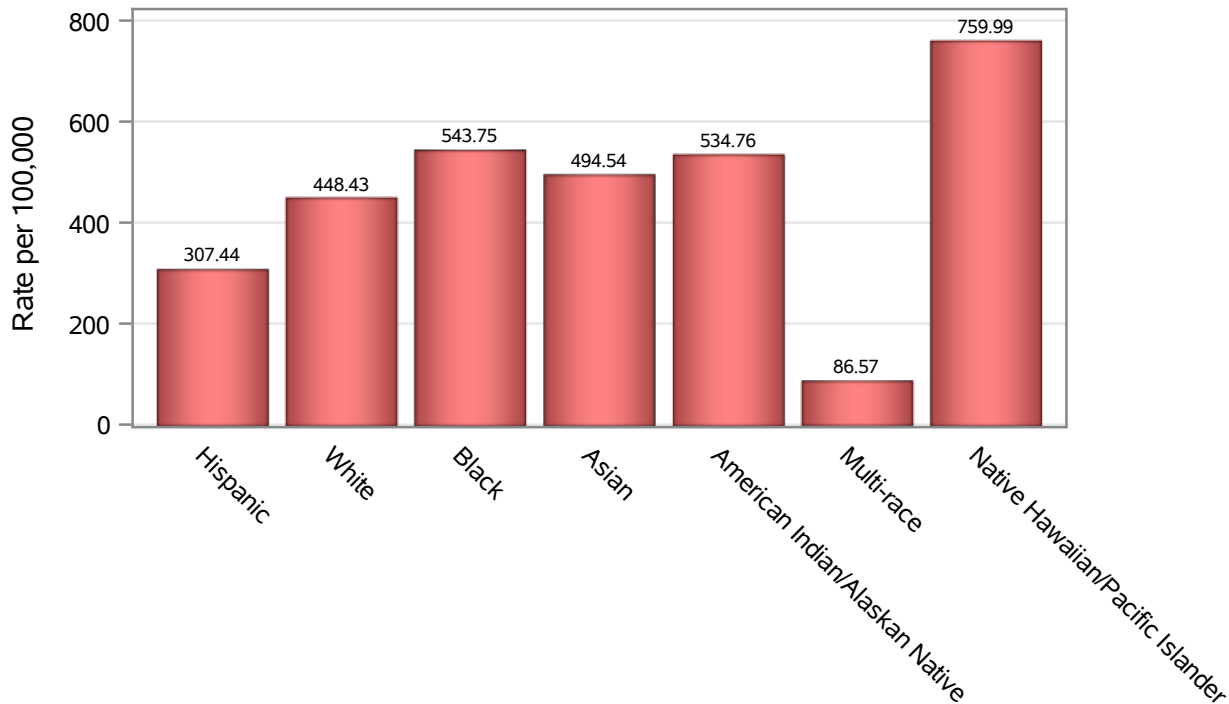


Investigations are ongoing; data are subject to change.

Reporting through 14NOV2022

Henderson zip codes include 89002, 89011, 89012, 89014, 89015, 89044, 89052, 89074, 89119, 89120, 89122, 89123, 89124, 89183.

Death Race/Ethnicity Rates in Henderson



Investigations are ongoing; data are subject to change.

Reporting through 14NOV2022

Henderson zip codes include 89002, 89011, 89012, 89014, 89015, 89044, 89052, 89074, 89119, 89120, 89122, 89123, 89124, 89183.

Table 6: Race/Ethnicity and COVID19 in Henderson

Case Status	Race Ethnicity Categories	N	%	Population	Rate per 100,000
Cases	Hispanic	27937	22.4	121649	22965
	White	45810	36.8	291462	15717
	Black	9843	7.9	38,069	25856
	Asian	10801	8.7	51,967	20784
	American Indian/Alaskan Native	588	0.5	2,618	22460
	Multi-race	447	0.4	19,638	2276.2
	Native Hawaiian/Pacific Islander	2102	1.7	4,079	51532
	Unknown	26937	21.6	.	.
Hospitalizations	Hispanic	1329	19.2	121649	1092.5
	White	3527	51.1	291462	1210.1
	Black	716	10.4	38,069	1880.8
	Asian	641	9.3	51,967	1233.5
	American Indian/Alaskan Native	32	0.5	2,618	1222.3
	Multi-race	34	0.5	19,638	173.13
	Native Hawaiian/Pacific Islander	139	2.0	4,079	3407.7
	Unknown	486	7.0	.	.
Deaths	Hispanic	374	16.9	121649	307.44
	White	1307	59.2	291462	448.43
	Black	207	9.4	38,069	543.75
	Asian	257	11.6	51,967	494.54
	American Indian/Alaskan Native	14	0.6	2,618	534.76
	Multi-race	17	0.8	19,638	86.57
	Native Hawaiian/Pacific Islander	31	1.4	4,079	759.99
	Unknown	2	0.1	.	.

Note1: Population data source for calculating rate estimates: U.S. Census Bureau, ACS 5-year estimate.

Note2: Rates for categories with fewer than 12 cases are suppressed due to high relative standard error.

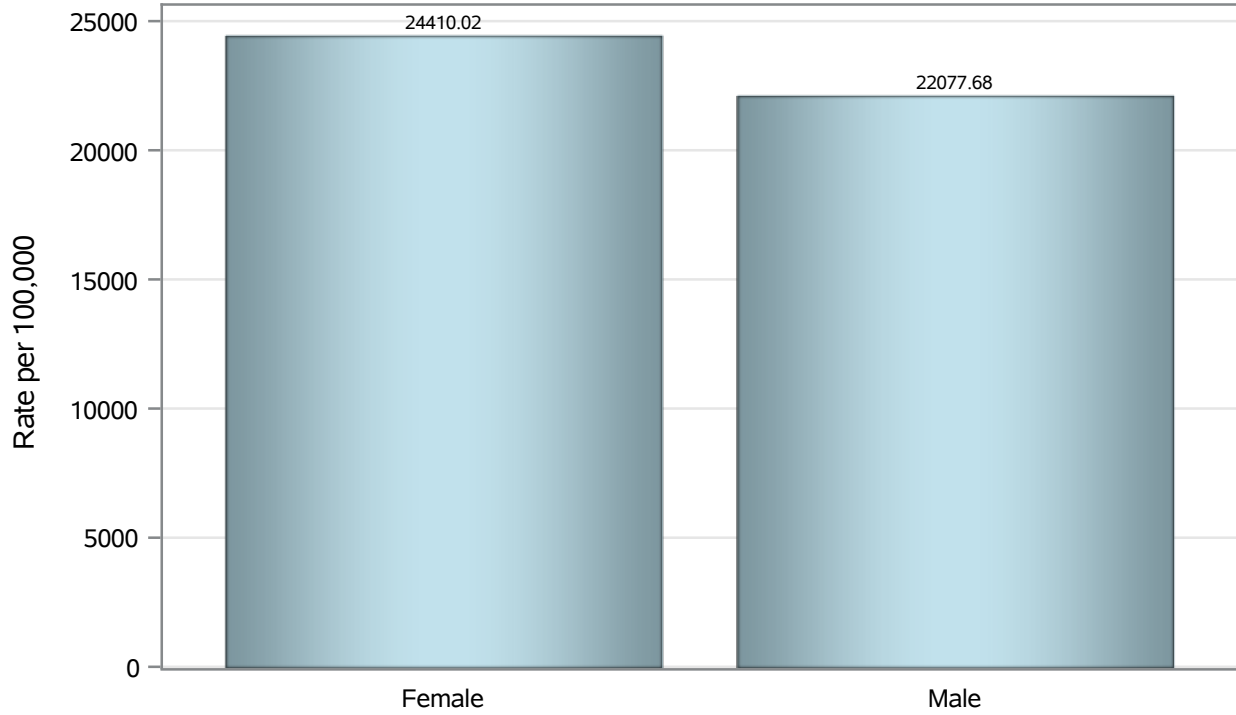
Note3: Hospitalizations are regardless of deceased status; Deaths are regardless of hospitalization status

Investigations are ongoing; data are subject to change.

Reporting through 14NOV2022

Henderson zip codes include 89002, 89011, 89012, 89014, 89015, 89044, 89052, 89074, 89119, 89120, 89122, 89123, 89124, 89183.

Case Birth Sex Rates in Henderson

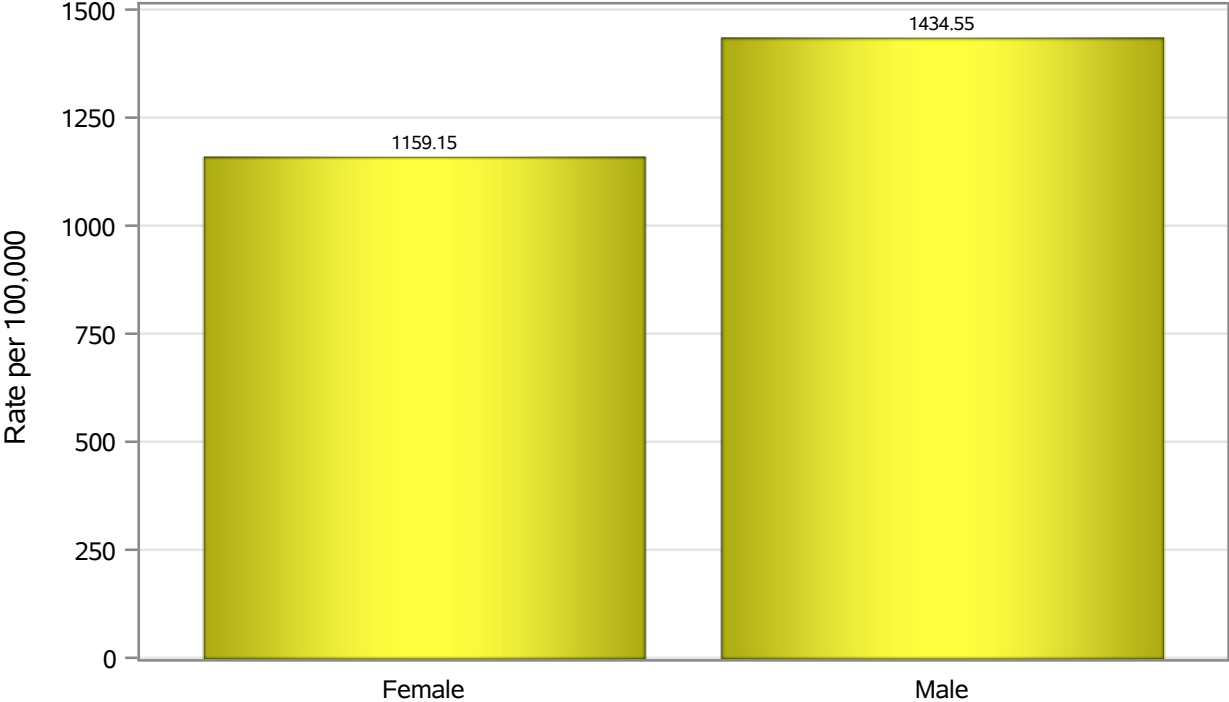


Investigations are ongoing; data are subject to change.

Reporting through 14NOV2022

Henderson zip codes include 89002, 89011, 89012, 89014, 89015, 89044, 89052, 89074, 89119, 89120, 89122, 89123, 89124, 89183.

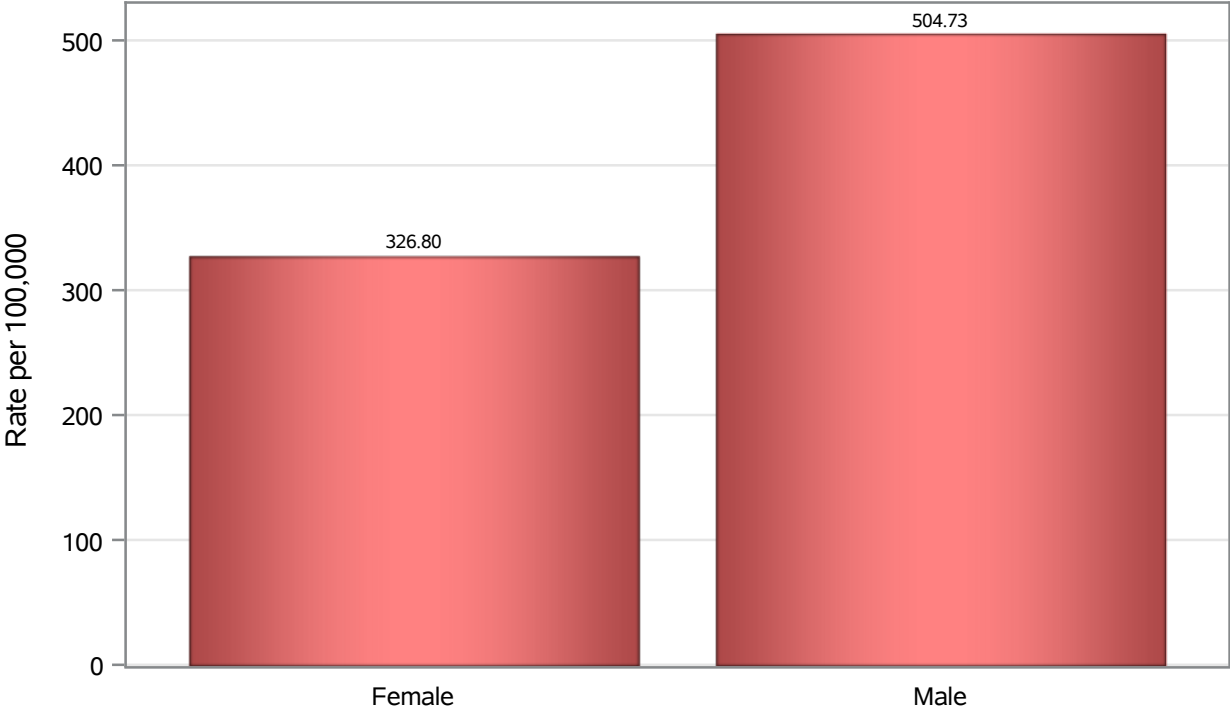
Hospitalization Birth Sex Rates in Henderson



Investigations are ongoing; data are subject to change.
Reporting through 14NOV2022

Henderson zip codes include 89002, 89011, 89012, 89014, 89015, 89044, 89052, 89074, 89119, 89120, 89122, 89123, 89124, 89183.

Death Birth Sex Rates in Henderson



Investigations are ongoing; data are subject to change.
Reporting through 14NOV2022

Henderson zip codes include 89002, 89011, 89012, 89014, 89015, 89044, 89052, 89074,
89119, 89120, 89122, 89123, 89124, 89183.

Table 7: Birth Sex and COVID19 in Henderson

Case Status	Birth Sex Categories	N	%	Population	Rate per 100,000
Cases	Female	65134	52.3	266833	24410
	Male	58482	47.0	264892	22078
	Unknown	849	0.7	.	.
Hospitalizations	Female	3093	44.8	266833	1159.2
	Male	3800	55.0	264892	1434.5
	Unknown	11	0.2	.	.
Deaths	Female	872	39.5	266833	326.80
	Male	1337	60.5	264892	504.73

Note1: Population data source for calculating rate estimates: U.S. Census Bureau, ACS 5-year estimate.

Note2: Rates for categories with fewer than 12 cases are suppressed due to high relative standard error.

Note3: Hospitalizations are regardless of deceased status; Deaths are regardless of hospitalization status

Investigations are ongoing; data are subject to change.

Reporting through 14NOV2022

Henderson zip codes include 89002, 89011, 89012, 89014, 89015, 89044, 89052, 89074, 89119, 89120, 89122, 89123, 89124, 89183.