

# COVID-19 Trends

Clark County, Nevada

Document creation date: November 7, 2022

- **General notes:** This report uses surveillance data collected by the Southern Nevada Health District. Due to delays related to laboratory processing, reporting, and case investigations, data from the most recent days are less complete than data from older time points. For this reason, as of June 10, 2020 this report will not display data from the previous three days prior to the date that the report was created. As many case investigations are ongoing, all data presented in this report are considered preliminary and subject to change. Data regarding cases, hospitalizations, deaths, and labs were last updated November 7, 2022 at 12:00 AM, and data is reported up through November 3, 2022.
- **Cases:** Symptom onset date was used for aggregating cases. If symptom onset date was missing, the following dates were substituted in this order: diagnosis date, lab collection date, report date (date case was reported to SNHD), event creation date (date case was entered into TriSano, SNHD's surveillance system).
- **Hospitalizations:** Admission date reported the the Nevada Hospital Association was used for aggregating hospitalizations. One person could have more than one admissions.
- **Deaths:** Date of death was used for aggregating deaths. If date of death was missing, report date was used.
- For the "7-Day Average of Daily New Cases per 100K, by Age Group (Years)" graph and table, the population data source for calculating rate estimates was from Nevada State Demographer "2019 ASRHO Estimates and Projections Summary 2000 to 2038", 2020 projection, vintage 2019. Rates for individual age categories may be based on small numbers, which may give unstable estimates.
- All graphs in this report show data from approximately 60 days prior to the date of the report.
- All tables show data from the last 14 days before the current date, with the exception of the "Percent Change in Weekly Totals from Previous Week", which displays data from the previous eight completed weeks.
- For the "Percent of People Receiving COVID-19 PCR Tests Who Have Positive Results" graph, one person who has multiple specimens collected in one day is only reported once. If any test of that person is positive, that person counts as a positive result. If all tests of that individual are negative, that person counts as a negative result. Laboratory tests were included if they were a test assessing for the presence of SARS-CoV-2 viral RNA, for example PCR tests. Antibody and antigen tests were excluded.

# COVID-19 Cases

Clark County, NV

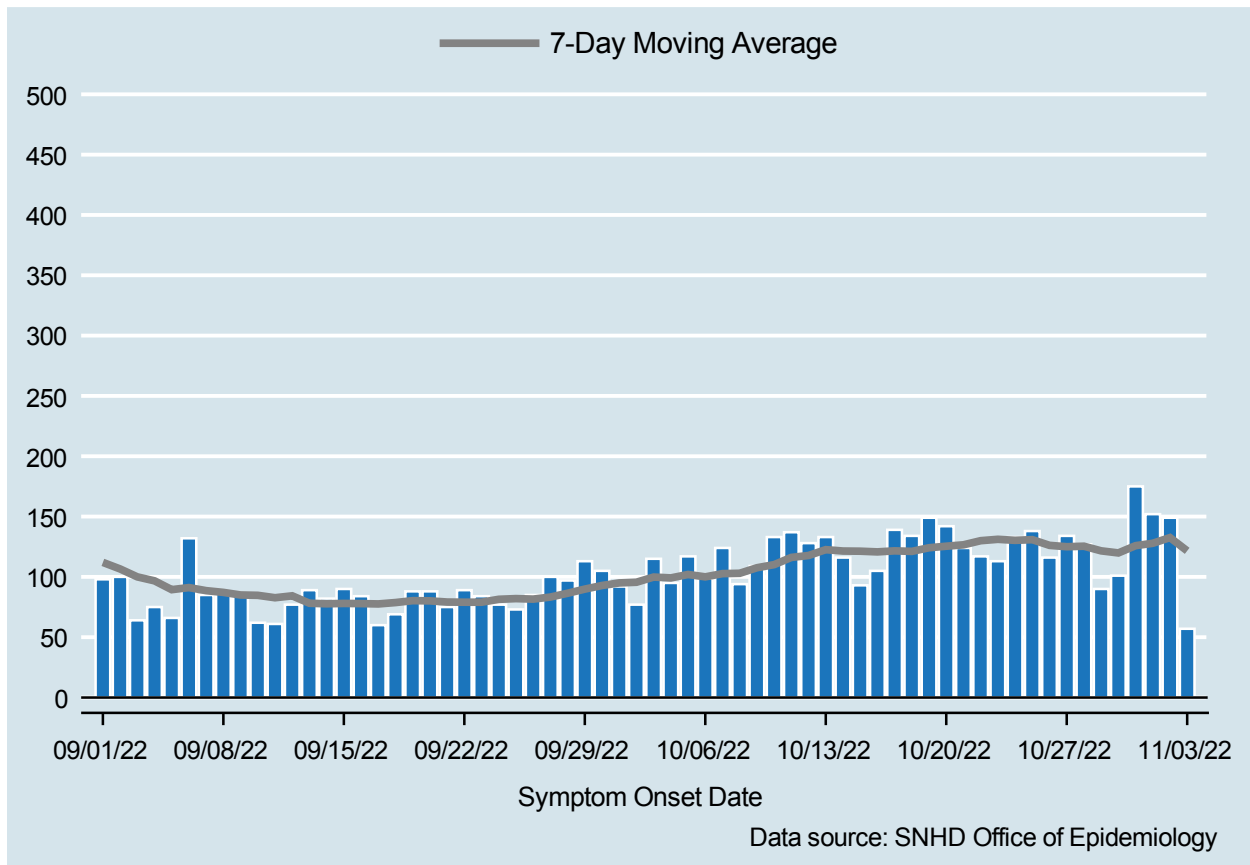


Table 1: COVID-19 Cases per Day, Clark County, NV

Date	Cases Per Day	7-Day Moving Average
OCT 21	124	126.6
OCT 22	117	130.0
OCT 23	113	131.1
OCT 24	133	130.3
OCT 25	138	130.9
OCT 26	116	126.1
OCT 27	134	125.0
OCT 28	127	125.4
OCT 29	90	121.6
OCT 30	101	119.9
OCT 31	175	125.9
NOV 01	152	127.9
NOV 02	149	132.6
NOV 03	57	121.6

# COVID-19 Hospitalizations

Clark County, NV

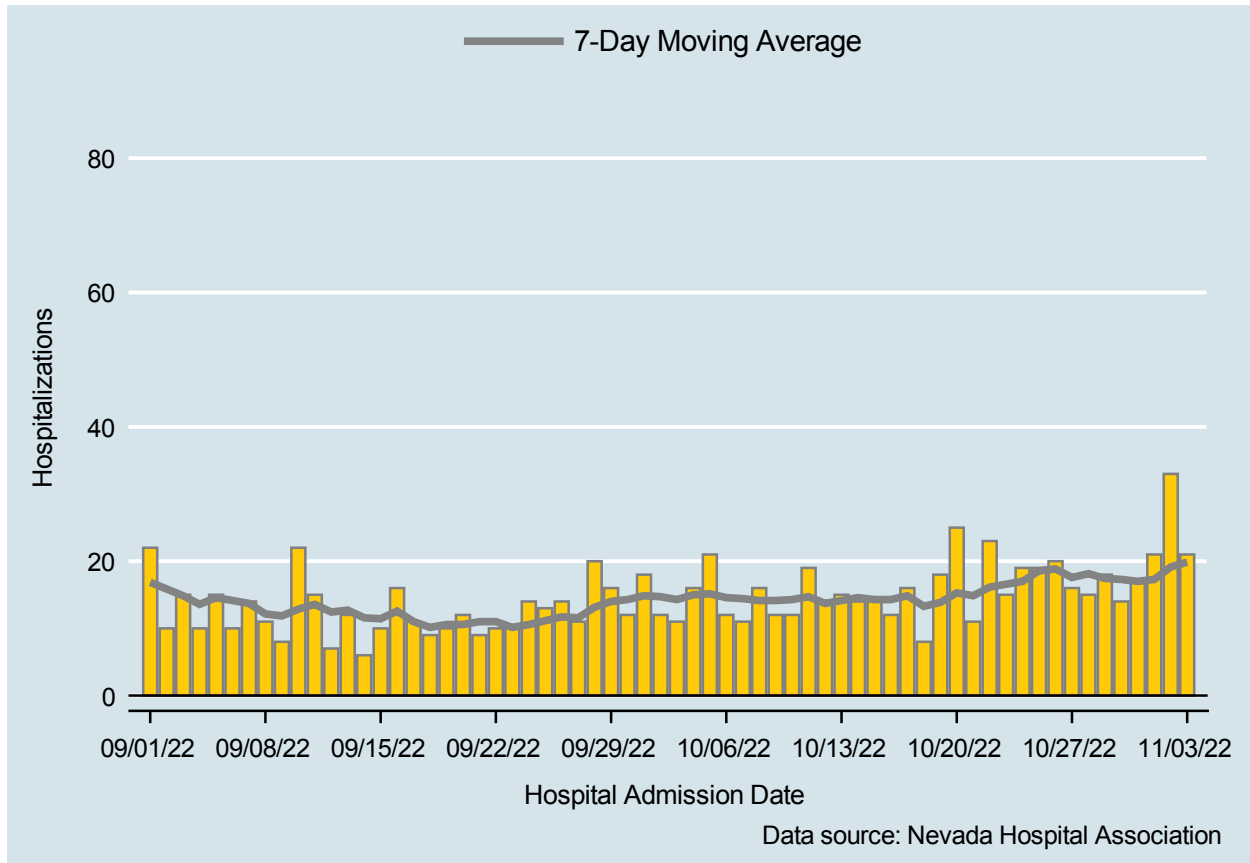


Table 2: COVID-19 Hospitalizations per Day, Clark County, NV

Date	Hospitalizations Per Day	7-Day Moving Average
OCT 21	11	14.9
OCT 22	23	16.1
OCT 23	15	16.6
OCT 24	19	17.0
OCT 25	19	18.6
OCT 26	20	18.9
OCT 27	16	17.6
OCT 28	15	18.1
OCT 29	18	17.4
OCT 30	14	17.3
OCT 31	17	17.0
NOV 01	21	17.3
NOV 02	33	19.1
NOV 03	21	19.9

## Bed Occupancy of COVID-19 Hospitalizations

Clark County, NV

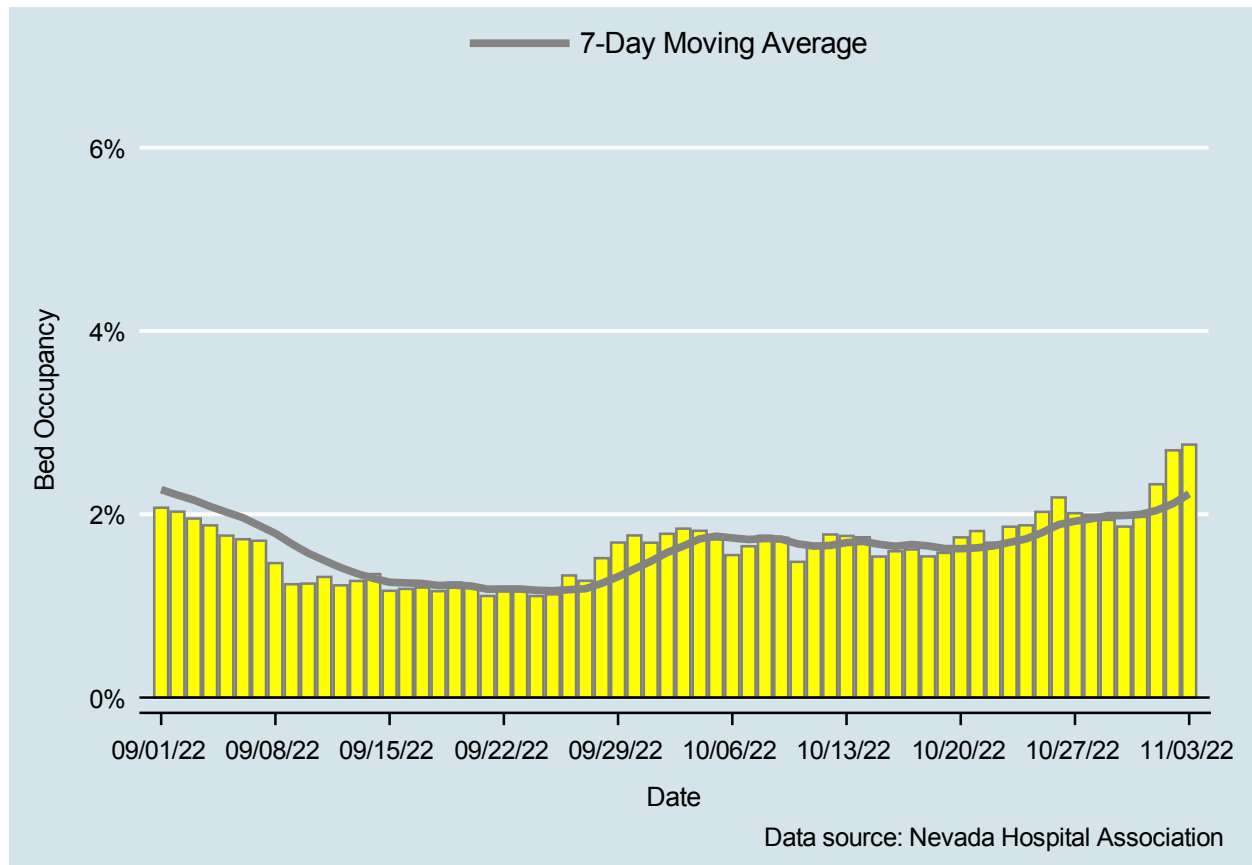


Table 3: Percent of Bed Occupancy per Day, Clark County, NV

Date	Bed Occupancy Per Day	7-Day Moving Average
OCT 21	1.82%	1.63%
OCT 22	1.69%	1.65%
OCT 23	1.86%	1.69%
OCT 24	1.88%	1.73%
OCT 25	2.03%	1.80%
OCT 26	2.18%	1.89%
OCT 27	2.01%	1.92%
OCT 28	1.99%	1.95%
OCT 29	1.94%	1.99%
OCT 30	1.87%	1.99%
OCT 31	1.97%	2.00%
NOV 01	2.33%	2.04%
NOV 02	2.70%	2.11%
NOV 03	2.76%	2.22%

# COVID-19 Deaths

Clark County, NV

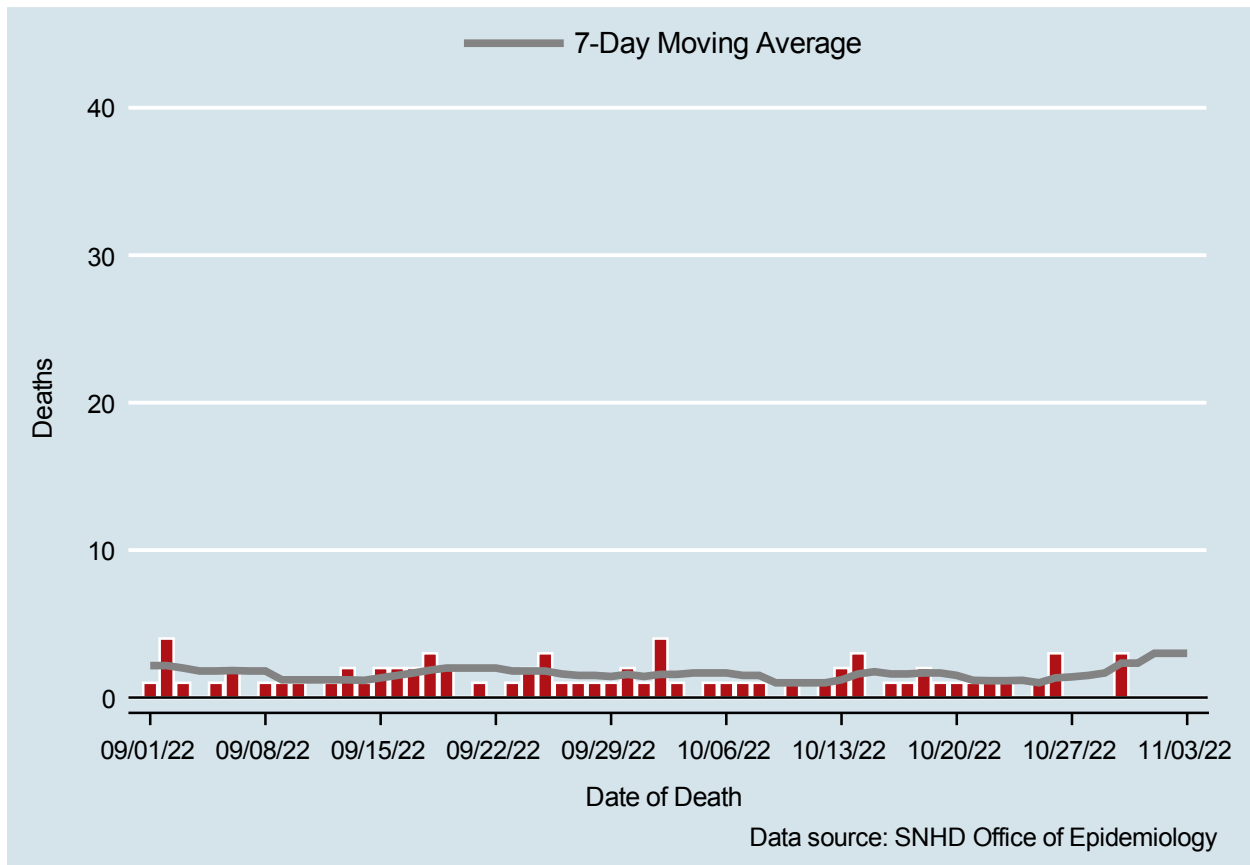


Table 4: COVID-19 Deaths per Day, Clark County, NV

Date	Deaths Per Day	7-Day Moving Average
OCT 21	1	1.2
OCT 22	1	1.1
OCT 23	1	1.1
OCT 24	.	1.2
OCT 25	1	1.0
OCT 26	3	1.3
OCT 27	.	1.4
OCT 28	.	1.5
OCT 29	.	1.7
OCT 30	3	2.3
OCT 31	.	2.3
NOV 01	.	3.0
NOV 02	.	3.0
NOV 03	.	3.0

## 7-Day Average of Daily New Cases per 100K, by Age Group (Years)

Clark County, NV

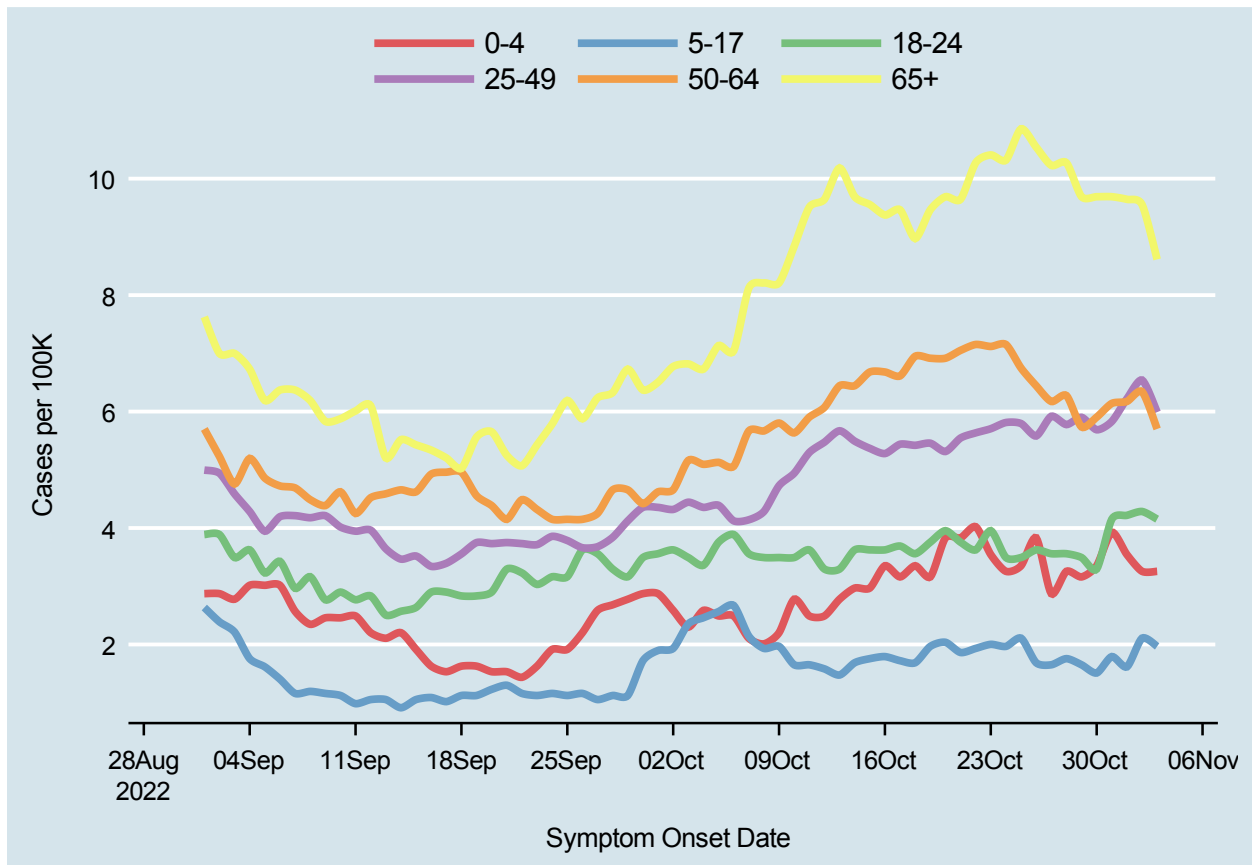
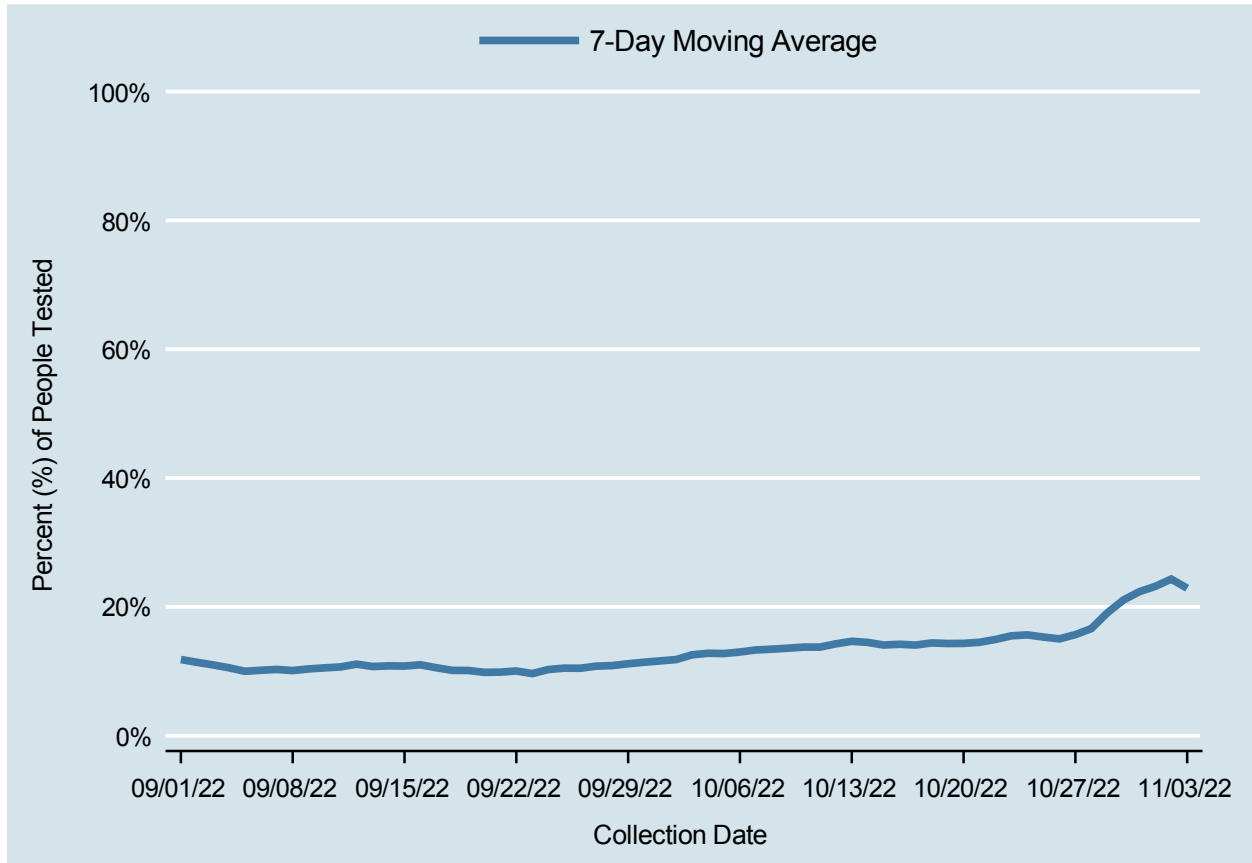


Table 5: 7-Day Average of Daily New Cases per 100K, by Age Group (Years)

Date	0-4	5-17	18-24	25-49	50-64	65+
OCT 21	3.8	1.9	3.8	5.5	7.1	9.6
OCT 22	4.0	1.9	3.6	5.6	7.2	10.3
OCT 23	3.5	2.0	4.0	5.7	7.1	10.4
OCT 24	3.3	2.0	3.5	5.8	7.2	10.3
OCT 25	3.4	2.1	3.5	5.8	6.7	10.9
OCT 26	3.8	1.7	3.6	5.6	6.4	10.5
OCT 27	2.9	1.7	3.6	5.9	6.2	10.2
OCT 28	3.3	1.8	3.6	5.8	6.3	10.3
OCT 29	3.2	1.7	3.5	5.9	5.7	9.7
OCT 30	3.4	1.5	3.3	5.7	5.9	9.7
OCT 31	3.9	1.8	4.2	5.8	6.1	9.7
NOV 01	3.5	1.6	4.2	6.2	6.2	9.6
NOV 02	3.3	2.1	4.3	6.5	6.3	9.6
NOV 03	3.3	2.0	4.2	6.0	5.7	8.6

## Percent of People Receiving COVID-19 PCR Tests Who Have Positive Results

Clark County, NV



*Report prepared by: Ying Zhang, PhD, MPH (Office of Epidemiology) and Lei Zhang, MS (Office of Informatics)*