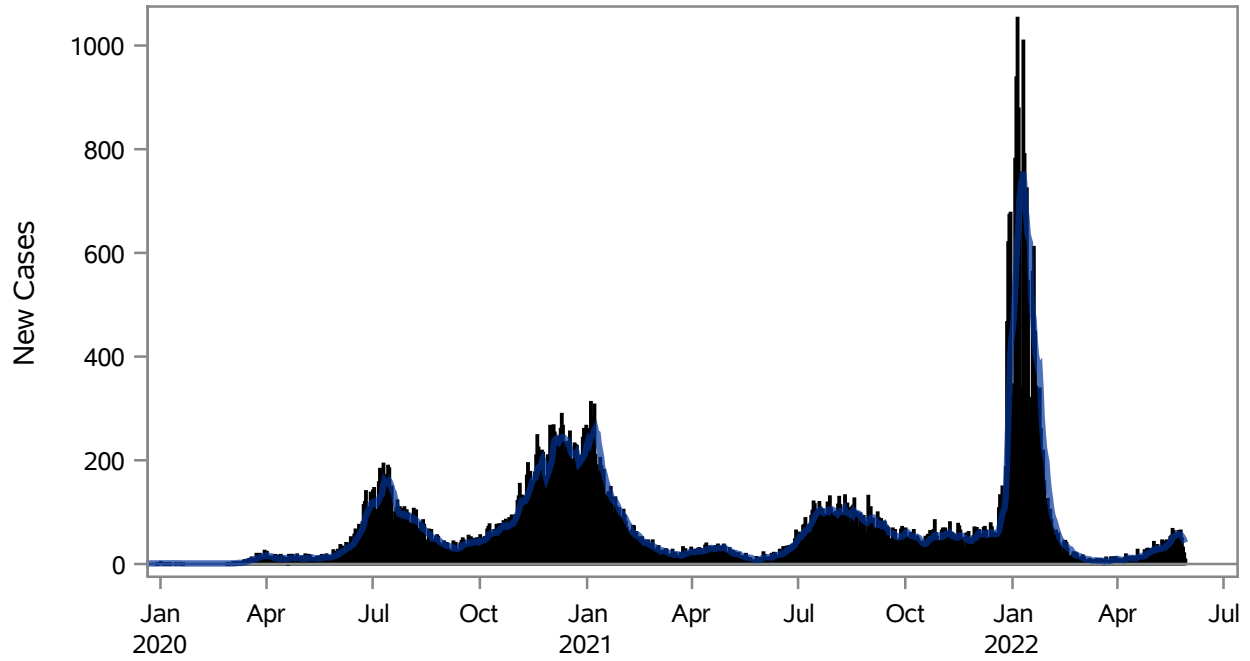


COVID19 Cases for North Las Vegas, 7-Day Moving Average



■ New Cases — 7-Day Moving Average

Investigations are ongoing; data are subject to change.

Reporting through 30MAY2022

North Las Vegas zip codes include 89030, 89031, 89032, 89033, 89036, 89081, 89084, 89085, 89086, 89087.

Table 1: New COVID19 Cases and 7-Day Moving Average in North Las Vegas, Previous Two Weeks

Date (Daily)	New Cases	7-Day Moving Average
17MAY2022	54	44.00
18MAY2022	67	49.00
19MAY2022	63	51.86
20MAY2022	58	53.71
21MAY2022	49	55.00
22MAY2022	47	55.57
23MAY2022	63	57.29
24MAY2022	53	57.14
25MAY2022	64	56.71
26MAY2022	49	54.71
27MAY2022	31	50.86
28MAY2022	20	46.71

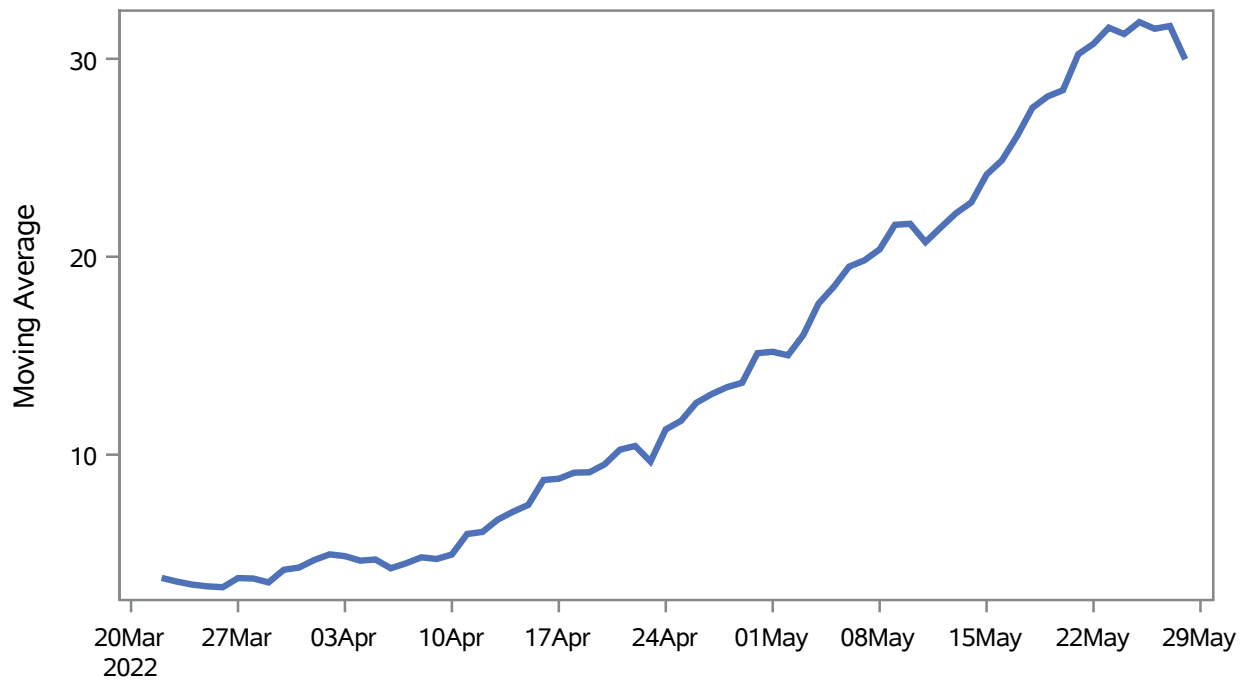
Note1: Event Date is calculated as follows based on completed information:

1) Disease onset date 2) Disease diagnosis date 3) Lab result collection date 4) Report date to SNHD.

**Investigations are ongoing; data are subject to change.
Reporting through 30MAY2022**

North Las Vegas zip codes include 89030, 89031, 89032, 89033, 89036, 89081, 89084, 89085, 89086, 89087.

Percent of People Receiving COVID-19 Viral Tests Who Have Positive Results in North Las Vegas



Investigations are ongoing; data are subject to change.
Reporting through 30MAY2022

North Las Vegas zip codes include 89030, 89031, 89032, 89033, 89036, 89081, 89084, 89085, 89086, 89087.

Table 2: Percent of People Receiving COVID-19 Viral Tests Who Have Positive Results in North Las Vegas

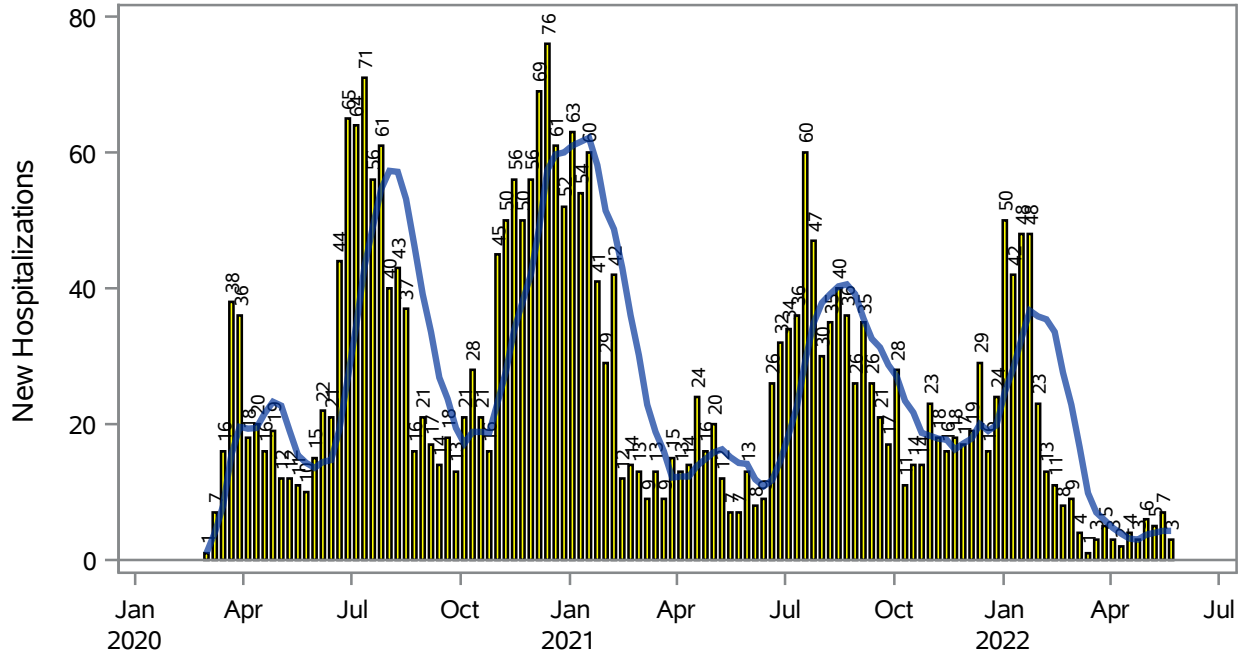
Collection Date	Positive	Negative	Equivocal	Total	% Positivity	7-Day Moving Average
14MAY2022	36	109		145	24.83	22.7
15MAY2022	45	87		132	34.09	24.2
16MAY2022	80	213		293	27.30	24.9
17MAY2022	81	212	1	294	27.55	26.1
18MAY2022	88	231	1	320	27.50	27.5
19MAY2022	86	202		288	29.86	28.1
20MAY2022	83	215	1	299	27.76	28.4
21MAY2022	74	123		197	37.56	30.2
22MAY2022	68	112		180	37.78	30.8
23MAY2022	99	200	1	300	33.00	31.6
24MAY2022	90	264	2	356	25.28	31.2
25MAY2022	99	212	1	312	31.73	31.9
26MAY2022	96	252	1	349	27.51	31.5
27MAY2022	85	211		296	28.72	31.7
28MAY2022	49	141		190	25.79	30.0

Note: Testing Data includes a 3 day delay

**Investigations are ongoing; data are subject to change.
Reporting through 30MAY2022**

North Las Vegas zip codes include 89030, 89031, 89032, 89033, 89036, 89081, 89084, 89085, 89086, 89087.

COVID19 Hospitalizations for North Las Vegas, 7-Day Moving Average



■ New Hospitalizations — 7-Day Moving Average

Investigations are ongoing; data are subject to change.

Reporting through 30MAY2022

North Las Vegas zip codes include 89030, 89031, 89032, 89033, 89036, 89081, 89084, 89085, 89086, 89087.

Table 3: New COVID19-Related Hospitalizations and 7-Day Moving Average in North Las Vegas, previous month

Week	Hospitalizations	7-Day Moving Average
01MAY2022	6	3.71
08MAY2022	5	4.00
15MAY2022	7	4.29
22MAY2022	3	4.29

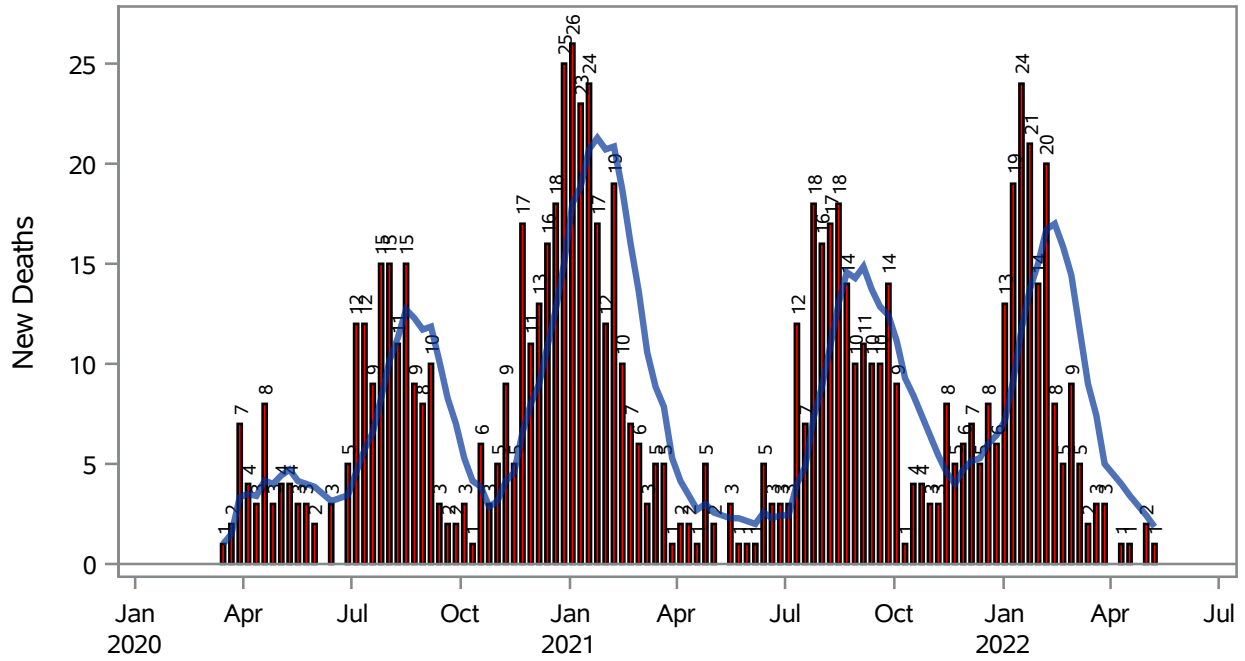
Note1: Admission Date is calculated as follows based on completed information:
A) COVID19 Case is hospitalized B) COVID19 Case has a hospital admission date.

If admission date is missing, then the following is substituted temporarily, in order:
1) Disease onset date 2) Disease diagnosis date 3) Lab result collection date 4) Report date to SNHD.

**Investigations are ongoing; data are subject to change.
Reporting through 30MAY2022**

North Las Vegas zip codes include 89030, 89031, 89032, 89033, 89036, 89081, 89084, 89085, 89086, 89087.

COVID19 Deaths for North Las Vegas, 7-Day Moving Average



■ New Deaths — 7-Day Moving Average

Investigations are ongoing; data are subject to change.

Reporting through 30MAY2022

North Las Vegas zip codes include 89030, 89031, 89032, 89033, 89036, 89081, 89084, 89085, 89086, 89087.

Table 4: New COVID19-Related Deaths and 7-Day Moving Average in North Las Vegas, Previous Month

Week	Deaths	7-Day Moving Average
01MAY2022	2	2.43
08MAY2022	1	1.86

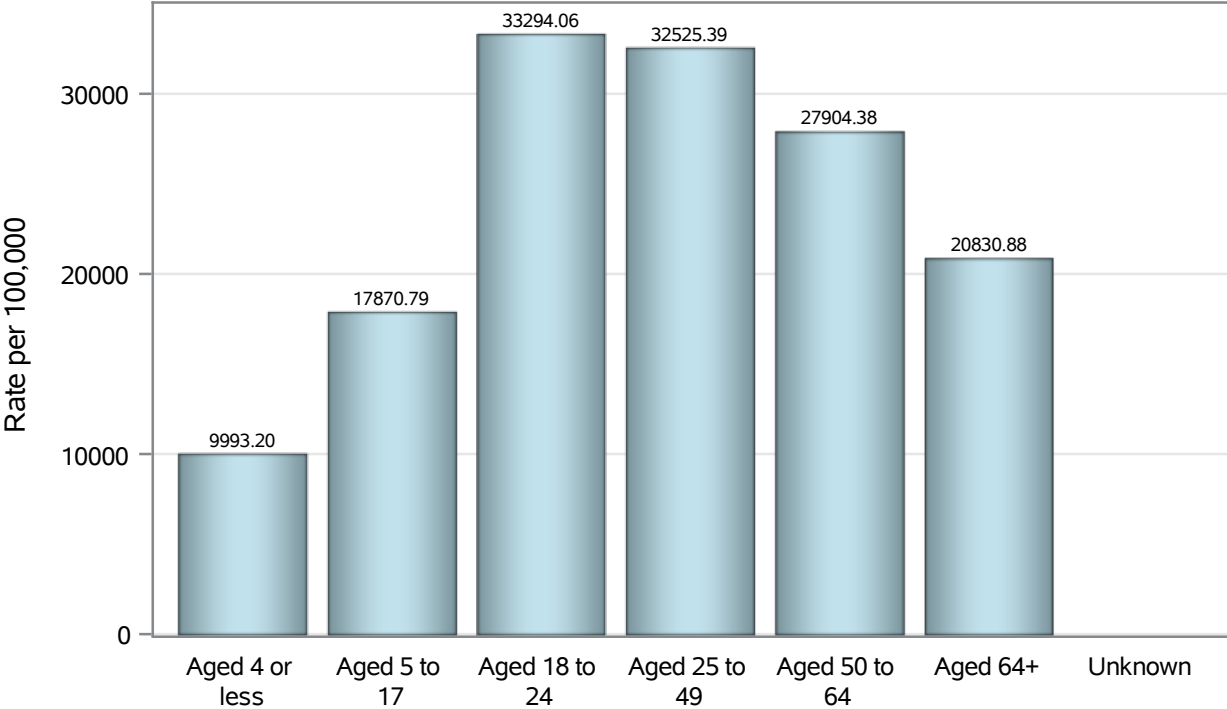
Note1: Date of Death is calculated as follows based on completed information:
A) COVID19 Case is reported as deceased B) COVID19 Case has a reported date of death.

If date of death is missing, then the following is substituted temporarily, in order:
1) Disease onset date 2) Disease diagnosis date
3) Lab result collection date 4) Report date to SNHD.

**Investigations are ongoing; data are subject to change.
Reporting through 30MAY2022**

North Las Vegas zip codes include 89030, 89031, 89032, 89033, 89036, 89081, 89084, 89085, 89086, 89087.

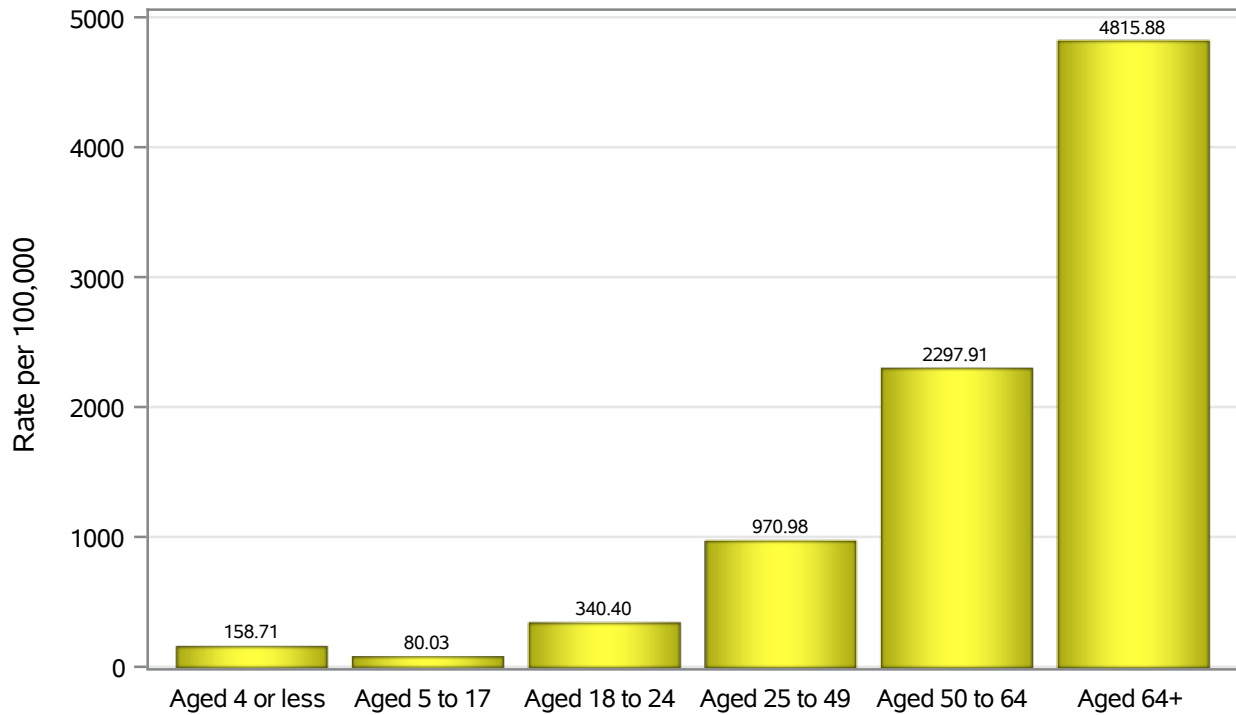
Case Age Rates in North Las Vegas



Investigations are ongoing; data are subject to change.
Reporting through 30MAY2022

North Las Vegas zip codes include 89030, 89031, 89032, 89033, 89036, 89081, 89084, 89085, 89086, 89087.

Hospitalization Age Rates in North Las Vegas

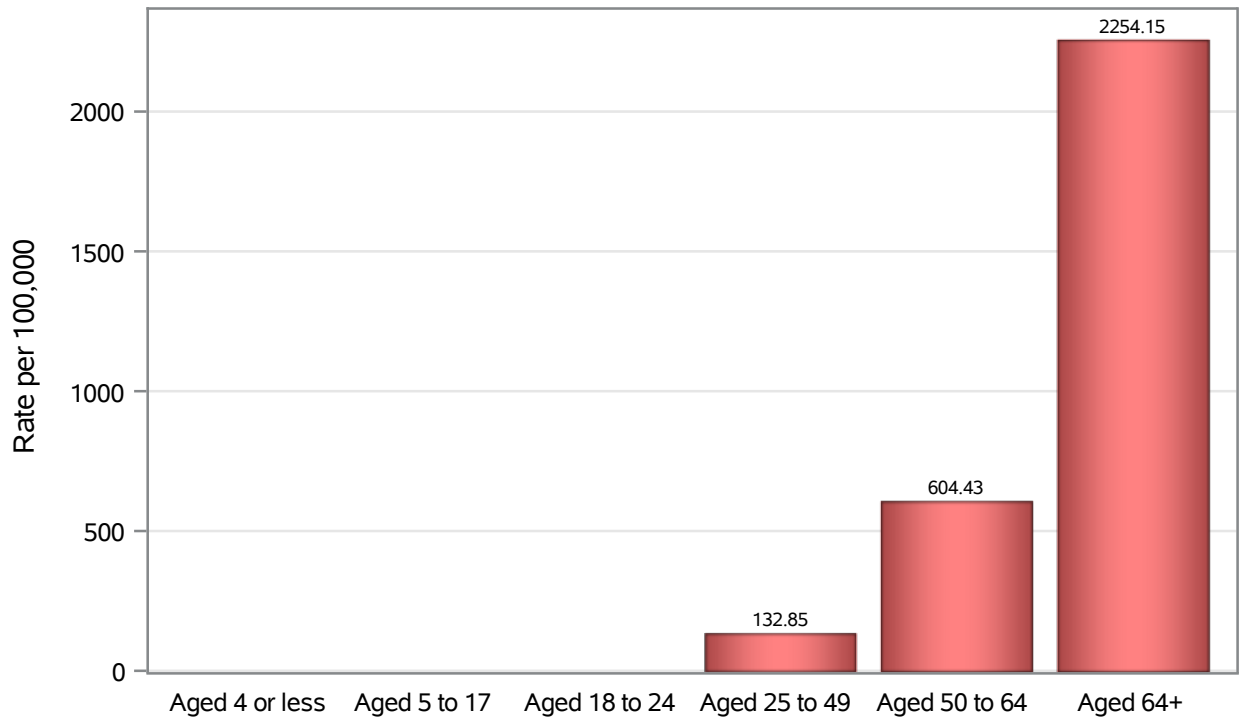


Investigations are ongoing; data are subject to change.

Reporting through 30MAY2022

North Las Vegas zip codes include 89030, 89031, 89032, 89033, 89036, 89081, 89084, 89085, 89086, 89087.

Death Age Rates in North Las Vegas



Investigations are ongoing; data are subject to change.

Reporting through 30MAY2022

North Las Vegas zip codes include 89030, 89031, 89032, 89033, 89036, 89081, 89084, 89085, 89086, 89087.

Table 5: Age and COVID19 in North Las Vegas

Case Status	Age Categories	N	%	Population	Rate per 100,000
Cases	Aged 4 or less	1763	2.9	17,642	9993.2
	Aged 5 to 17	8932	14.8	49,981	17871
	Aged 18 to 24	7629	12.6	22,914	33294
	Aged 25 to 49	26932	44.5	82,803	32525
	Aged 50 to 64	10249	17.0	36,729	27904
	Aged 64+	4944	8.2	23,734	20831
	Unknown	10	0.0	.	.
Hospitalizations	Aged 4 or less	28	1.0	17,642	158.71
	Aged 5 to 17	40	1.4	49,981	80.03
	Aged 18 to 24	78	2.7	22,914	340.40
	Aged 25 to 49	804	27.4	82,803	970.98
	Aged 50 to 64	844	28.7	36,729	2297.9
	Aged 64+	1143	38.9	23,734	4815.9
Deaths	Aged 4 or less	1	0.1	17,642	.
	Aged 5 to 17	1	0.1	49,981	.
	Aged 18 to 24	2	0.2	22,914	.
	Aged 25 to 49	110	12.6	82,803	132.85
	Aged 50 to 64	222	25.5	36,729	604.43
	Aged 64+	535	61.4	23,734	2254.2

Note1: Population data source for calculating rate estimates: U.S. Census Bureau, ACS 5-year estimate.

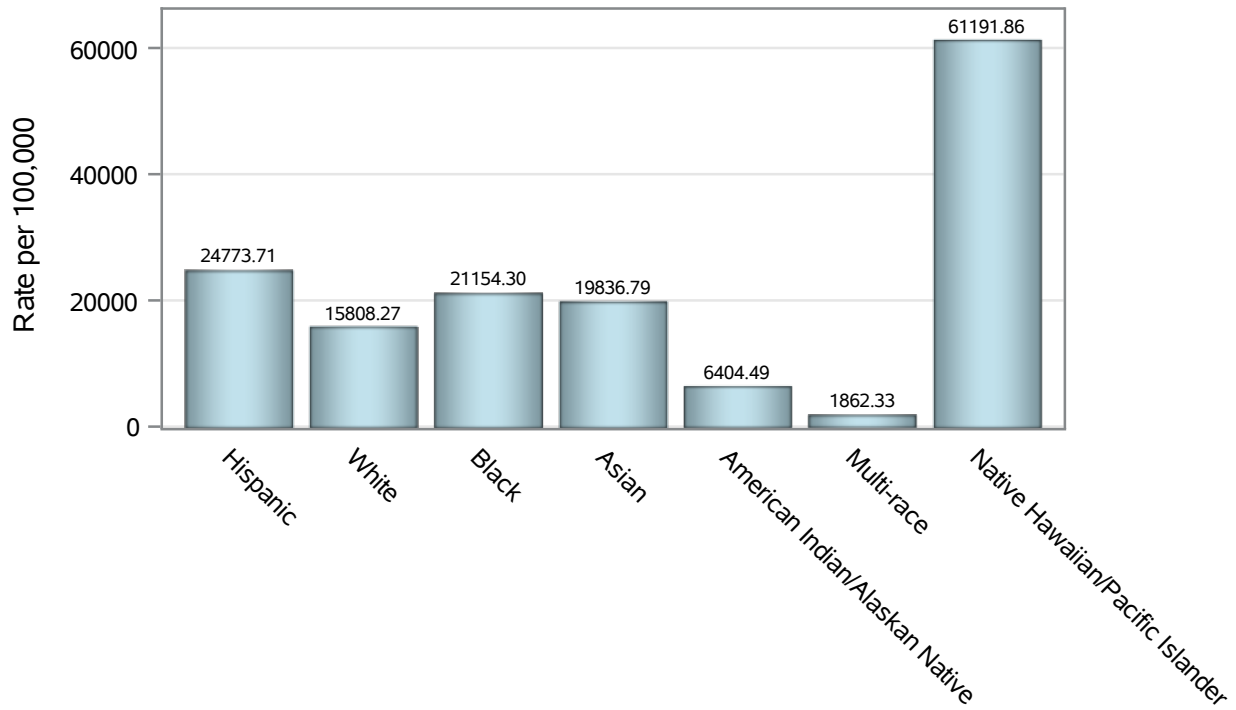
Note2: Rates for categories with fewer than 12 cases are suppressed due to high relative standard error.

Note3: Hospitalizations are regardless of deceased status; Deaths are regardless of hospitalization status

**Investigations are ongoing; data are subject to change.
Reporting through 30MAY2022**

North Las Vegas zip codes include 89030, 89031, 89032, 89033, 89036, 89081, 89084, 89085, 89086, 89087.

Case Race/Ethnicity Rates in North Las Vegas

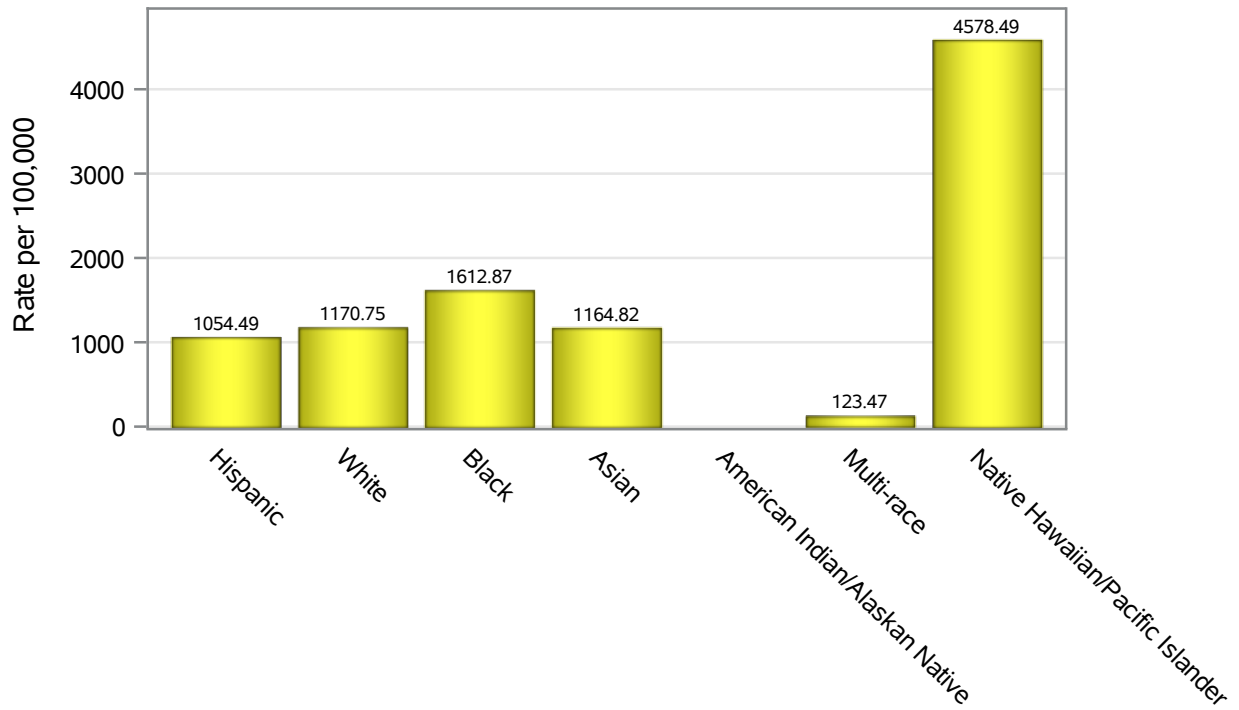


Investigations are ongoing; data are subject to change.

Reporting through 30MAY2022

North Las Vegas zip codes include 89030, 89031, 89032, 89033, 89036, 89081, 89084, 89085, 89086, 89087.

Hospitalization Race/Ethnicity Rates in North Las Vegas

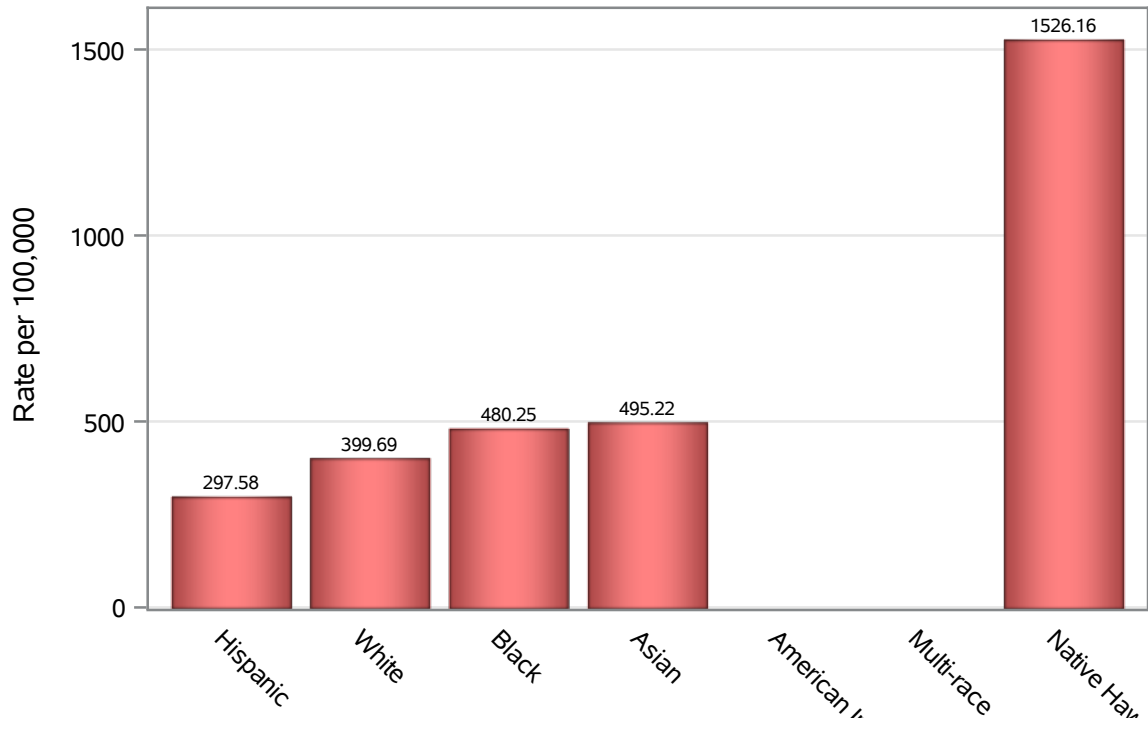


Investigations are ongoing; data are subject to change.

Reporting through 30MAY2022

North Las Vegas zip codes include 89030, 89031, 89032, 89033, 89036, 89081, 89084, 89085, 89086, 89087.

Death Race/Ethnicity Rates in North Las Vegas



Investigations are ongoing; data are subject to change.

Reporting through 30MAY2022

North Las Vegas zip codes include 89030, 89031, 89032, 89033, 89036, 89081, 89084, 89085, 89086, 89087.

Table 6: Race/Ethnicity and COVID19 in North Las Vegas

Case Status	Race Ethnicity Categories	N	%	Population	Rate per 100,000
Cases	Hispanic	23893	39.5	96,445	24774
	White	10046	16.6	63,549	15808
	Black	9955	16.5	47,059	21154
	Asian	2844	4.7	14,337	19837
	American Indian/Alaskan Native	57	0.1	890	6404.5
	Multi-race	181	0.3	9,719	1862.3
	Native Hawaiian/Pacific Islander	842	1.4	1,376	61192
	Unknown	12641	20.9	.	.
Hospitalizations	Hispanic	1017	34.6	96,445	1054.5
	White	744	25.3	63,549	1170.8
	Black	759	25.8	47,059	1612.9
	Asian	167	5.7	14,337	1164.8
	American Indian/Alaskan Native	11	0.4	890	.
	Multi-race	12	0.4	9,719	123.47
	Native Hawaiian/Pacific Islander	63	2.1	1,376	4578.5
	Unknown	164	5.6	.	.
Deaths	Hispanic	287	33.0	96,445	297.58
	White	254	29.2	63,549	399.69
	Black	226	25.9	47,059	480.25
	Asian	71	8.2	14,337	495.22
	American Indian/Alaskan Native	6	0.7	890	.
	Multi-race	6	0.7	9,719	.
	Native Hawaiian/Pacific Islander	21	2.4	1,376	1526.2

Note1: Population data source for calculating rate estimates: U.S. Census Bureau, ACS 5-year estimate.

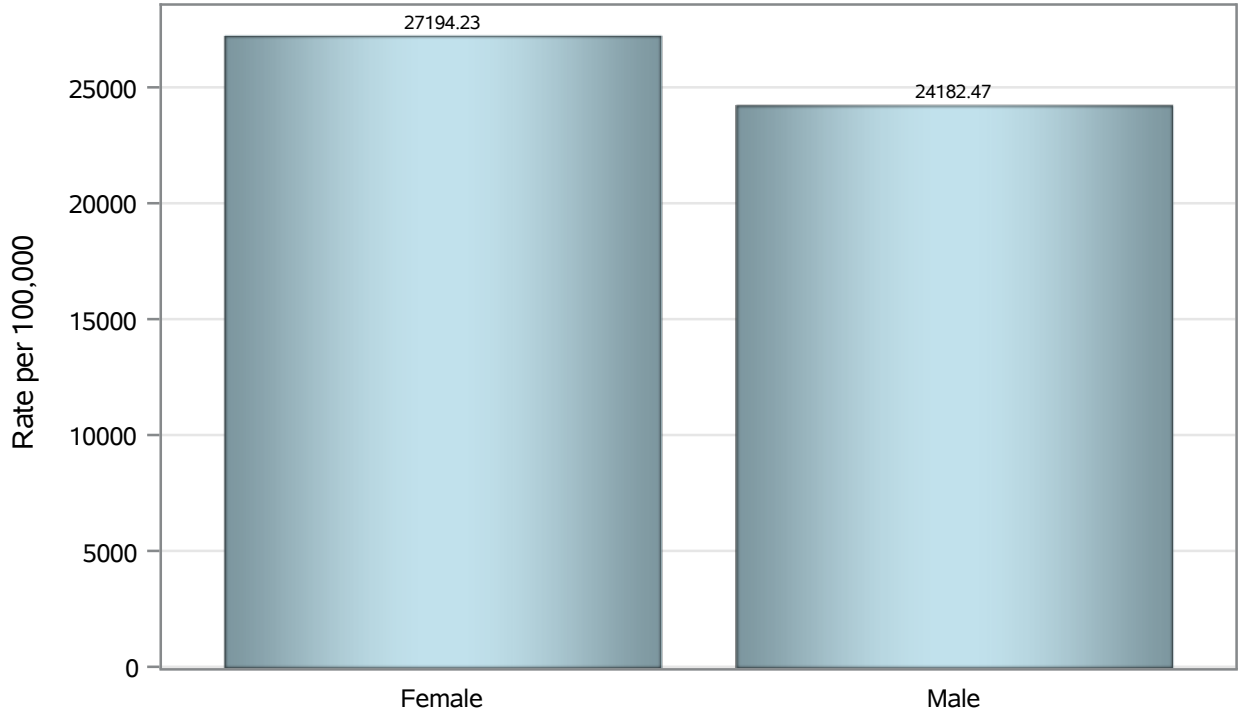
Note2: Rates for categories with fewer than 12 cases are suppressed due to high relative standard error.

Note3: Hospitalizations are regardless of deceased status; Deaths are regardless of hospitalization status

**Investigations are ongoing; data are subject to change.
Reporting through 30MAY2022**

North Las Vegas zip codes include 89030, 89031, 89032, 89033, 89036, 89081, 89084, 89085, 89086, 89087.

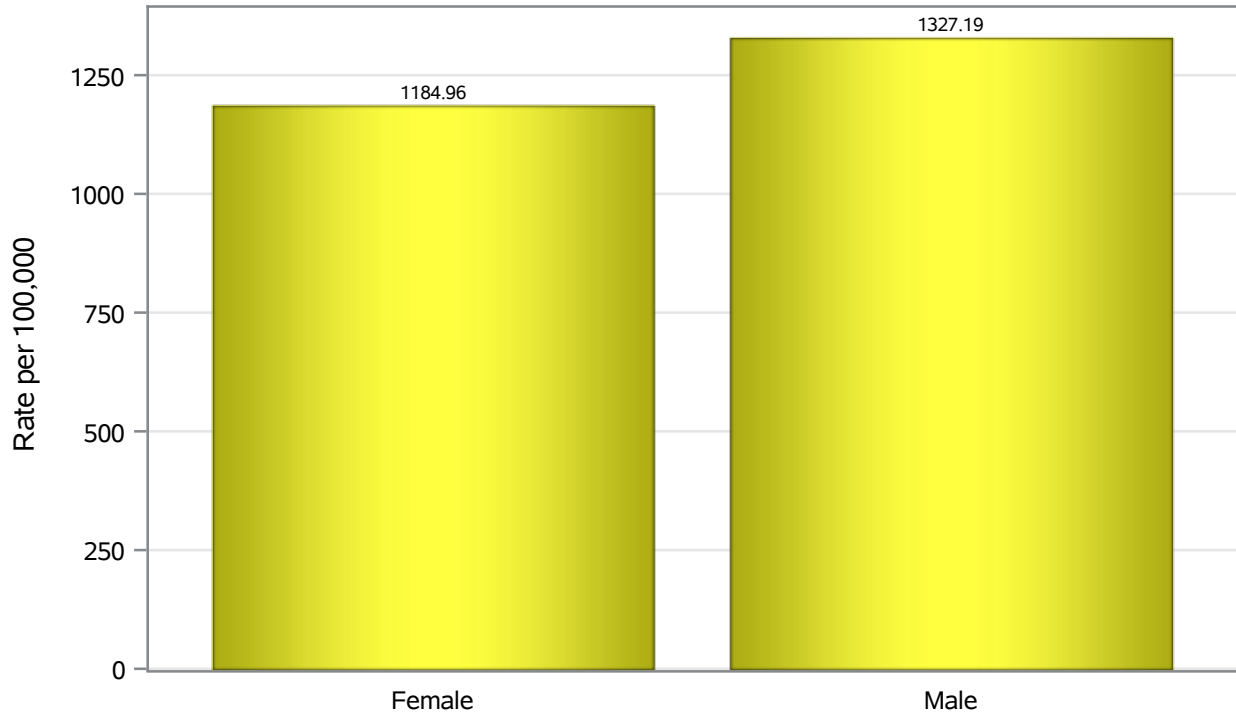
Case Birth Sex Rates in North Las Vegas



Investigations are ongoing; data are subject to change.
Reporting through 30MAY2022

North Las Vegas zip codes include 89030, 89031, 89032, 89033, 89036, 89081, 89084, 89085, 89086, 89087.

Hospitalization Birth Sex Rates in North Las Vegas

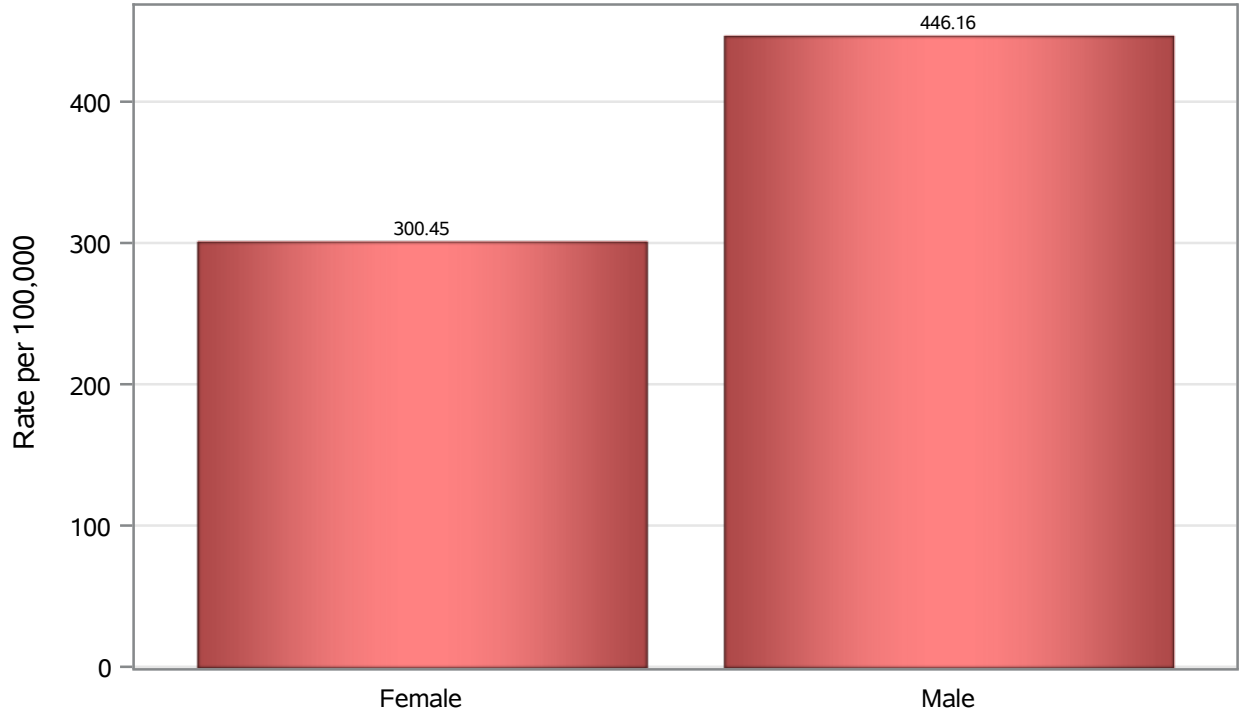


Investigations are ongoing; data are subject to change.

Reporting through 30MAY2022

North Las Vegas zip codes include 89030, 89031, 89032, 89033, 89036, 89081, 89084, 89085, 89086, 89087.

Death Birth Sex Rates in North Las Vegas



Investigations are ongoing; data are subject to change.

Reporting through 30MAY2022

North Las Vegas zip codes include 89030, 89031, 89032, 89033, 89036, 89081, 89084, 89085, 89086, 89087.

Table 7: Birth Sex and COVID19 in North Las Vegas

Case Status	Birth Sex Categories	N	%	Population	Rate per 100,000
Cases	Female	32313	53.4	118823	27194
	Male	27805	46.0	114980	24182
	Unknown	341	0.6	.	.
Hospitalizations	Female	1408	47.9	118823	1185.0
	Male	1526	52.0	114980	1327.2
	Unknown	3	0.1	.	.
Deaths	Female	357	41.0	118823	300.45
	Male	513	58.9	114980	446.16
	Unknown	1	0.1	.	.

Note1: Population data source for calculating rate estimates: U.S. Census Bureau, ACS 5-year estimate.

Note2: Rates for categories with fewer than 12 cases are suppressed due to high relative standard error.

Note3: Hospitalizations are regardless of deceased status; Deaths are regardless of hospitalization status

**Investigations are ongoing; data are subject to change.
Reporting through 30MAY2022**

North Las Vegas zip codes include 89030, 89031, 89032, 89033, 89036, 89081, 89084, 89085, 89086, 89087.