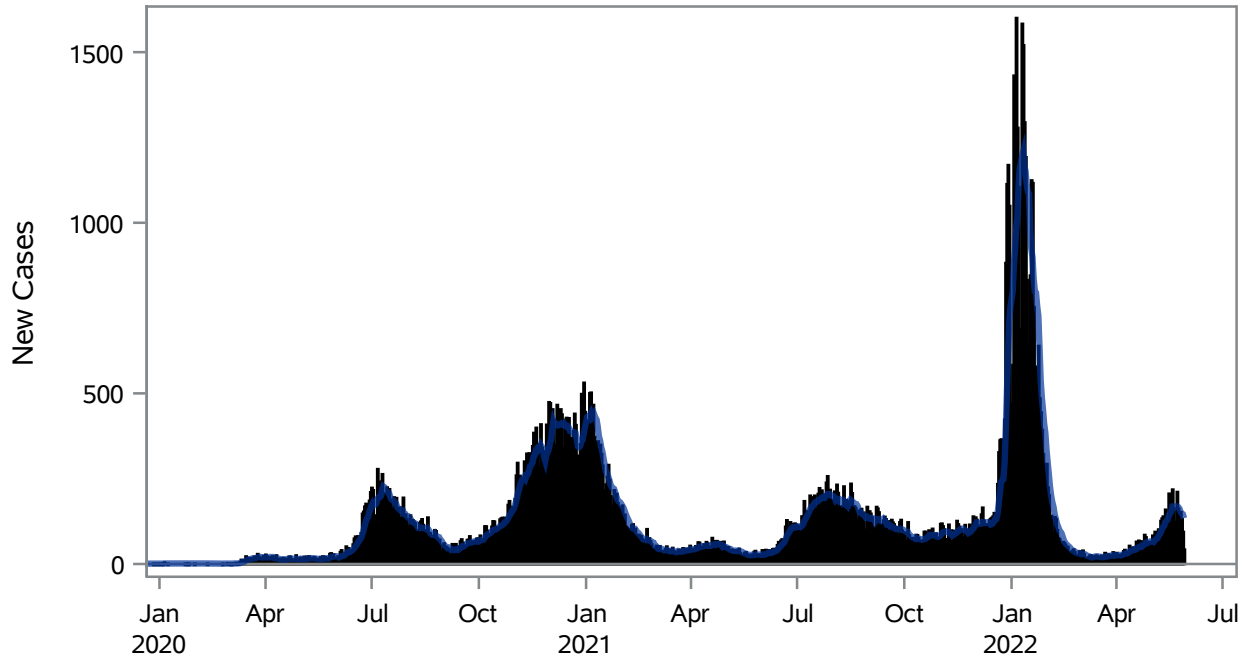


COVID19 Cases for Henderson, 7-Day Moving Average



■ New Cases — 7-Day Moving Average

Investigations are ongoing; data are subject to change.

Reporting through 30MAY2022

Henderson zip codes include 89002, 89011, 89012, 89014, 89015, 89044, 89052, 89074, 89119, 89120, 89122, 89123, 89124, 89183.

Table 1: New COVID19 Cases and 7-Day Moving Average in Henderson, Previous Two Weeks

Date (Daily)	New Cases	7-Day Moving Average
17MAY2022	175	148.14
18MAY2022	178	153.71
19MAY2022	218	168.29
20MAY2022	163	168.86
21MAY2022	112	166.86
22MAY2022	123	167.86
23MAY2022	211	168.57
24MAY2022	162	166.71
25MAY2022	147	162.29
26MAY2022	152	152.86
27MAY2022	131	148.29
28MAY2022	94	145.71

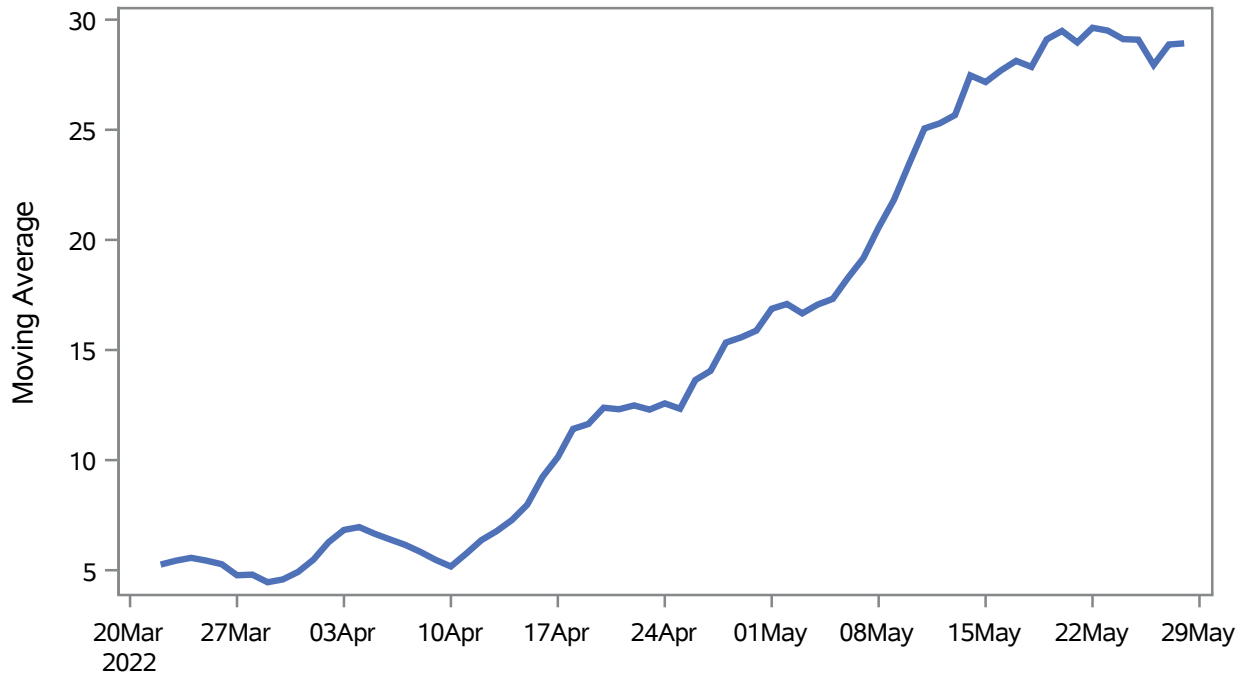
Note1: Event Date is calculated as follows based on completed information:
1) Disease onset date 2) Disease diagnosis date 3) Lab result collection date 4) Report date to SNHD.

Investigations are ongoing; data are subject to change.

Reporting through 30MAY2022

Henderson zip codes include 89002, 89011, 89012, 89014, 89015, 89044, 89052, 89074, 89119, 89120, 89122, 89123, 89124, 89183.

Percent of People Receiving COVID-19 Viral Tests Who Have Positive Results in Henderson



Investigations are ongoing; data are subject to change.
Reporting through 30MAY2022

Henderson zip codes include 89002, 89011, 89012, 89014, 89015, 89044, 89052, 89074, 89119, 89120, 89122, 89123, 89124, 89183.

Table 2: Percent of People Receiving COVID-19 Viral Tests Who Have Positive Results in Henderson

Collection Date	Positive	Negative	Equivocal	Total	% Positivity	7-Day Moving Average
14MAY2022	118	211	1	330	35.76	27.5
15MAY2022	92	238	1	331	27.79	27.2
16MAY2022	168	382	1	551	30.49	27.7
17MAY2022	150	345	1	496	30.24	28.1
18MAY2022	149	403	1	553	26.94	27.9
19MAY2022	194	469	2	665	29.17	29.1
20MAY2022	148	420	1	569	26.01	29.5
21MAY2022	113	239		352	32.10	29.0
22MAY2022	99	206		305	32.46	29.6
23MAY2022	197	468	1	666	29.58	29.5
24MAY2022	173	452	3	628	27.55	29.1
25MAY2022	161	439	2	602	26.74	29.1
26MAY2022	124	461	1	586	21.16	27.9
27MAY2022	172	356	1	529	32.51	28.9
28MAY2022	99	206		305	32.46	28.9

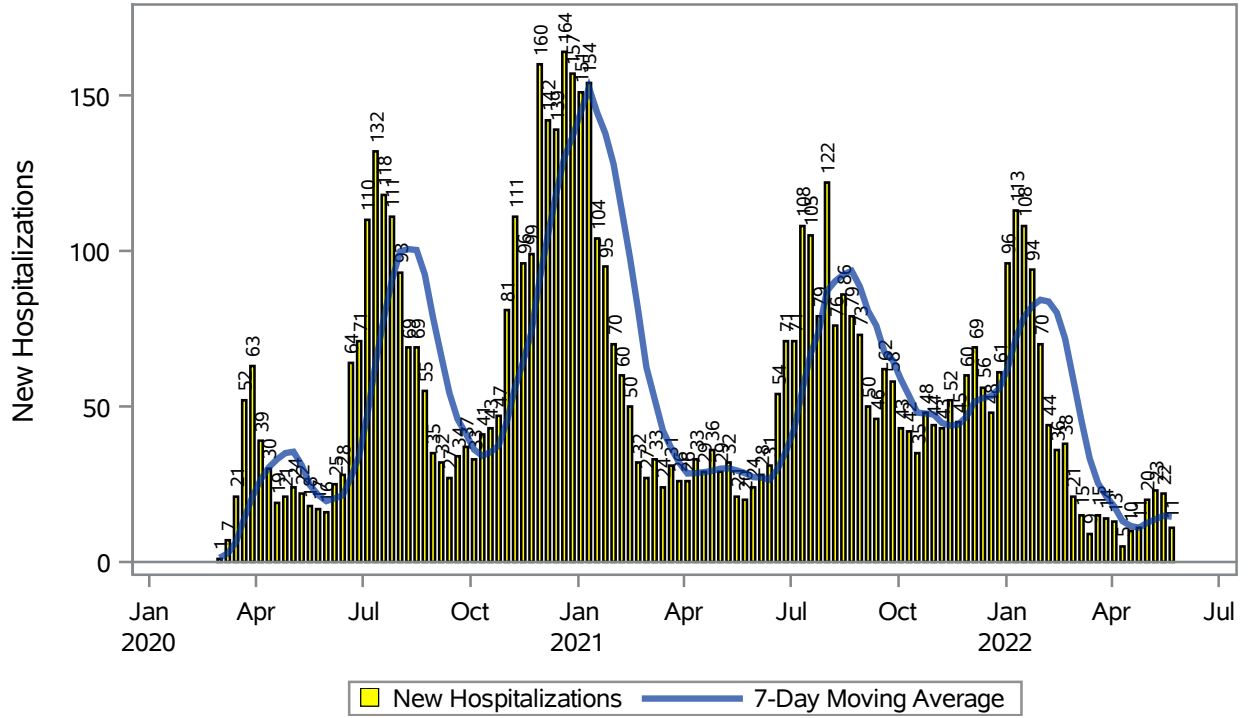
Note: Testing Data includes a 3 day delay

Investigations are ongoing; data are subject to change.

Reporting through 30MAY2022

Henderson zip codes include 89002, 89011, 89012, 89014, 89015, 89044, 89052, 89074, 89119, 89120, 89122, 89123, 89124, 89183.

COVID19 Hospitalizations for Henderson, 7-Day Moving Average



Investigations are ongoing; data are subject to change.

Reporting through 30MAY2022

Henderson zip codes include 89002, 89011, 89012, 89014, 89015, 89044, 89052, 89074, 89119, 89120, 89122, 89123, 89124, 89183.

Table 3: New COVID19-Related Hospitalizations and 7-Day Moving Average in Henderson, previous month

Week	Hospitalizations	7-Day Moving Average
01MAY2022	20	12.6
08MAY2022	23	13.7
15MAY2022	22	14.9
22MAY2022	11	14.6

Note1: Admission Date is calculated as follows based on completed information:
A) COVID19 Case is hospitalized B) COVID19 Case has a hospital admission date.

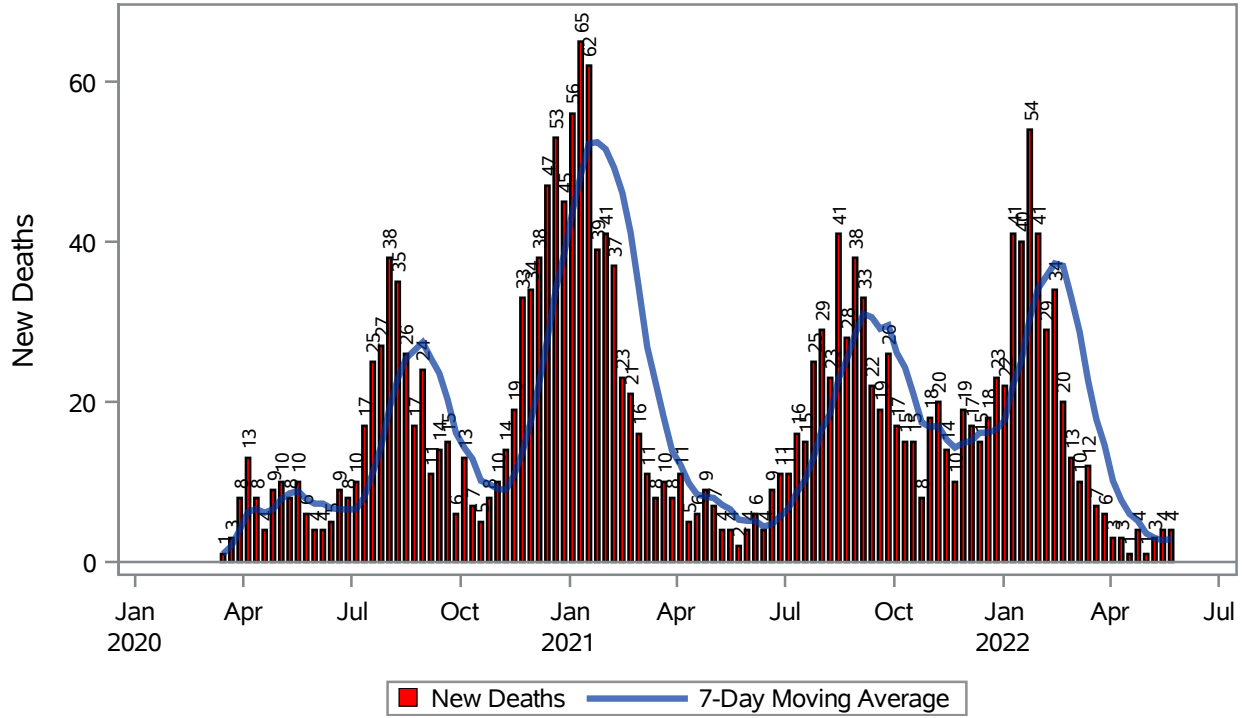
If admission date is missing, then the following is substituted temporarily, in order:
1) Disease onset date 2) Disease diagnosis date 3) Lab result collection date 4) Report date to SNHD.

Investigations are ongoing; data are subject to change.

Reporting through 30MAY2022

Henderson zip codes include 89002, 89011, 89012, 89014, 89015, 89044, 89052, 89074, 89119, 89120, 89122, 89123, 89124, 89183.

COVID19 Deaths for Henderson, 7-Day Moving Average



Investigations are ongoing; data are subject to change.

Reporting through 30MAY2022

Henderson zip codes include 89002, 89011, 89012, 89014, 89015, 89044, 89052, 89074, 89119, 89120, 89122, 89123, 89124, 89183.

Table 4: New COVID19-Related Deaths and 7-Day Moving Average in Henderson, Previous Month

Week	Deaths	7-Day Moving Average
01MAY2022	1	3.57
08MAY2022	3	3.00
15MAY2022	4	2.71
22MAY2022	4	2.86

Note1: Date of Death is calculated as follows based on completed information:
A) COVID19 Case is reported as deceased B) COVID19 Case has a reported date of death.

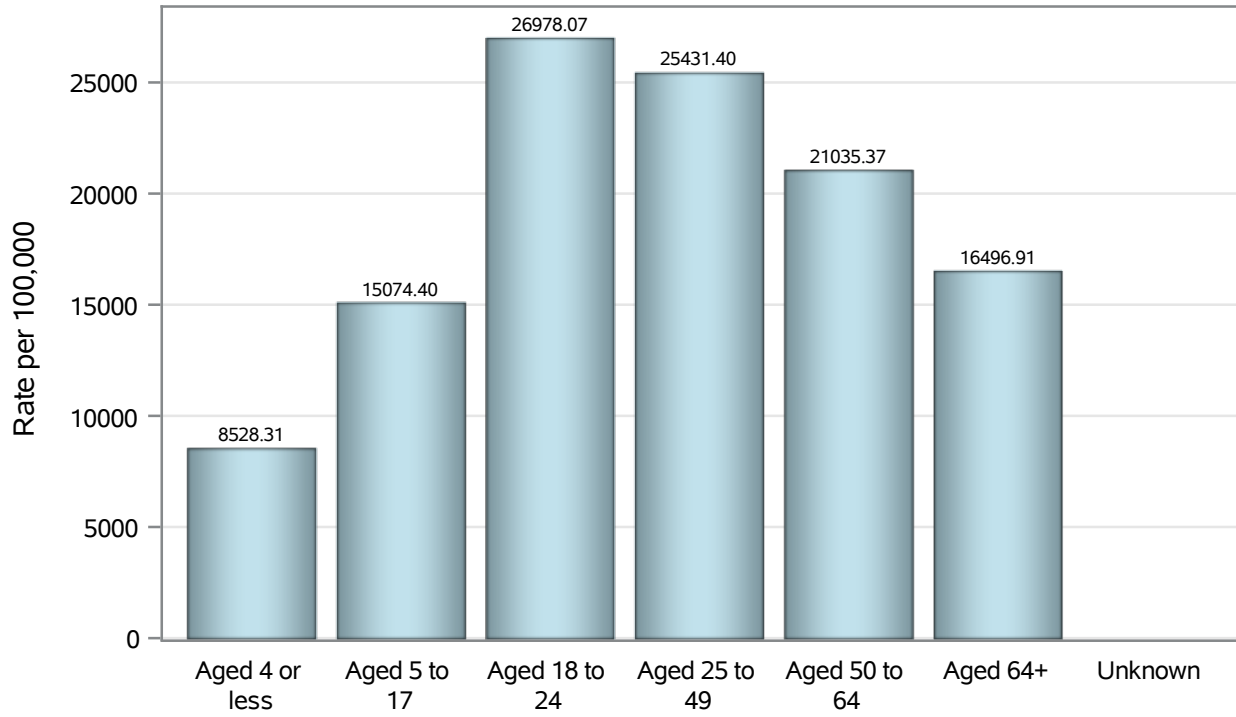
If date of death is missing, then the following is substituted temporarily, in order:
1) Disease onset date 2) Disease diagnosis date
3) Lab result collection date 4) Report date to SNHD.

Investigations are ongoing; data are subject to change.

Reporting through 30MAY2022

Henderson zip codes include 89002, 89011, 89012, 89014, 89015, 89044, 89052, 89074, 89119, 89120, 89122, 89123, 89124, 89183.

Case Age Rates in Henderson

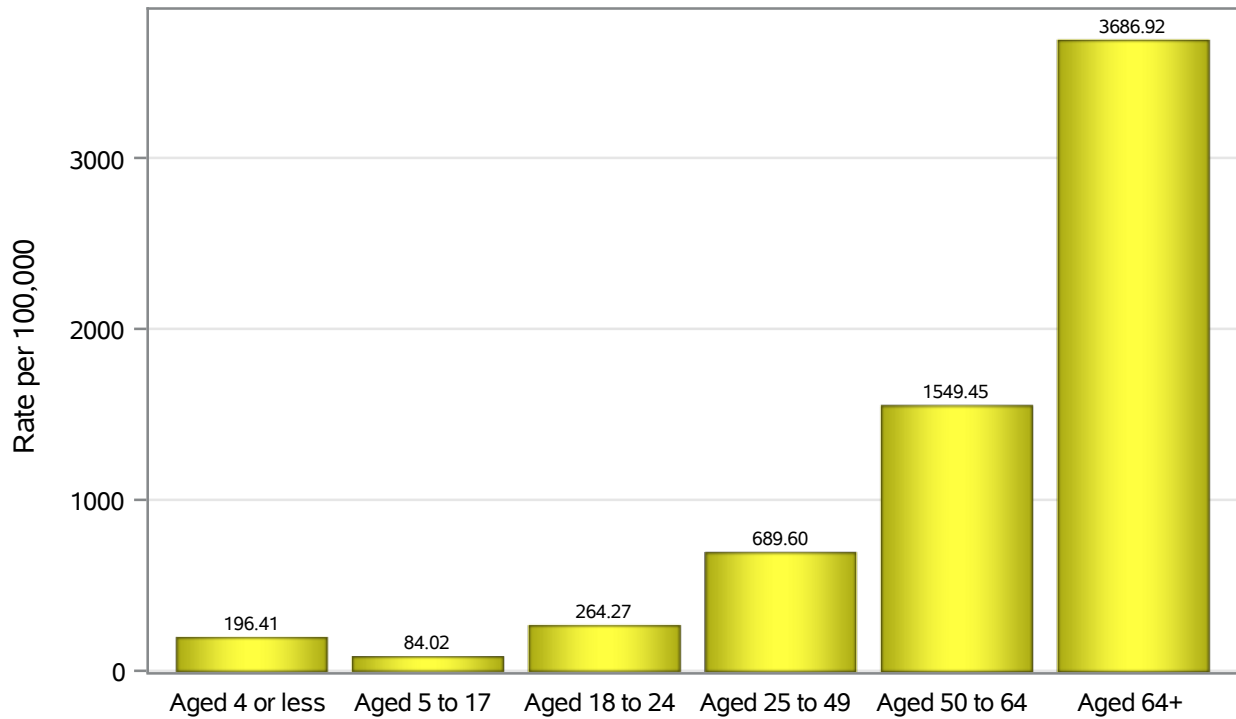


Investigations are ongoing; data are subject to change.

Reporting through 30MAY2022

Henderson zip codes include 89002, 89011, 89012, 89014, 89015, 89044, 89052, 89074, 89119, 89120, 89122, 89123, 89124, 89183.

Hospitalization Age Rates in Henderson

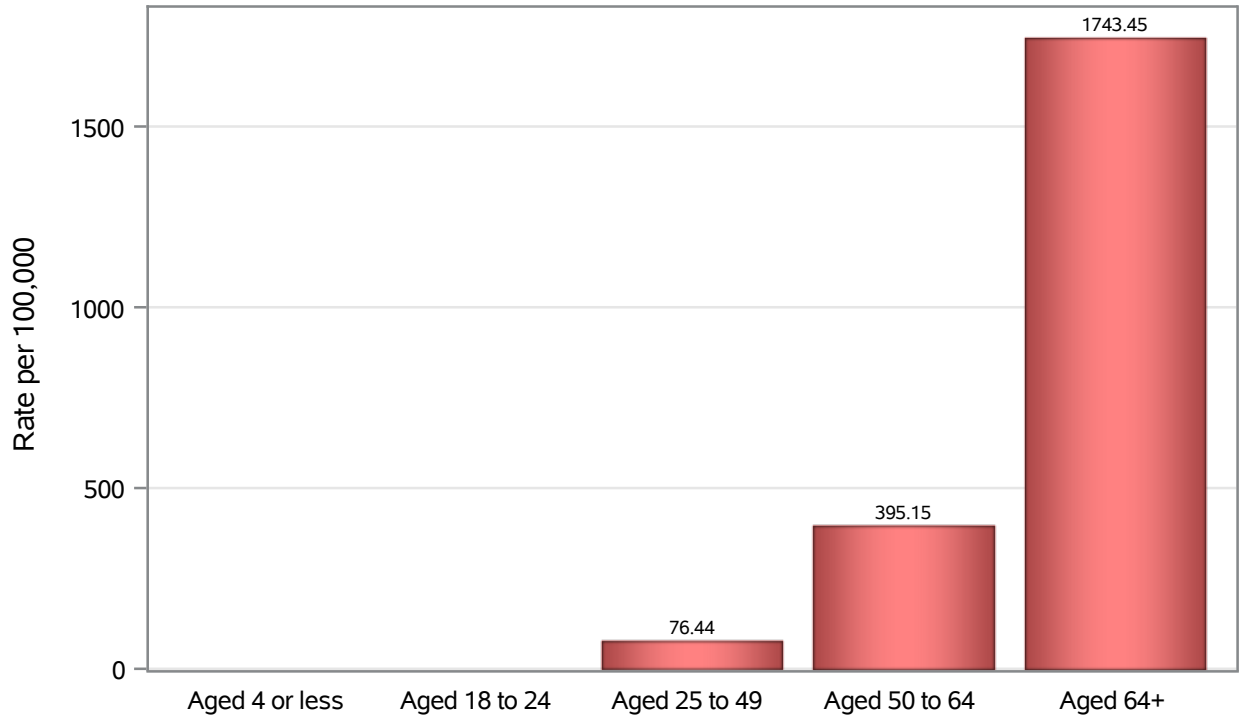


Investigations are ongoing; data are subject to change.

Reporting through 30MAY2022

Henderson zip codes include 89002, 89011, 89012, 89014, 89015, 89044, 89052, 89074, 89119, 89120, 89122, 89123, 89124, 89183.

Death Age Rates in Henderson



Investigations are ongoing; data are subject to change.

Reporting through 30MAY2022

Henderson zip codes include 89002, 89011, 89012, 89014, 89015, 89044, 89052, 89074, 89119, 89120, 89122, 89123, 89124, 89183.

Table 5: Age and COVID19 in Henderson

Case Status	Age Categories	N	%	Population	Rate per 100,000
Cases	Aged 4 or less	2475	2.2	29,021	8528.3
	Aged 5 to 17	12380	11.2	82,126	15074
	Aged 18 to 24	11944	10.8	44,273	26978
	Aged 25 to 49	47573	43.1	187064	25431
	Aged 50 to 64	21613	19.6	102746	21035
	Aged 64+	14269	12.9	86,495	16497
	Unknown	23	0.0	.	.
Hospitalizations	Aged 4 or less	57	0.9	29,021	196.41
	Aged 5 to 17	69	1.1	82,126	84.02
	Aged 18 to 24	117	1.9	44,273	264.27
	Aged 25 to 49	1290	20.4	187064	689.60
	Aged 50 to 64	1592	25.2	102746	1549.5
	Aged 64+	3189	50.5	86,495	3686.9
	Deaths	Aged 4 or less	1	0.0	29,021
Aged 18 to 24		3	0.1	44,273	.
Aged 25 to 49		143	6.9	187064	76.44
Aged 50 to 64		406	19.7	102746	395.15
Aged 64+		1508	73.2	86,495	1743.5

Note1: Population data source for calculating rate estimates: U.S. Census Bureau, ACS 5-year estimate.

Note2: Rates for categories with fewer than 12 cases are suppressed due to high relative standard error.

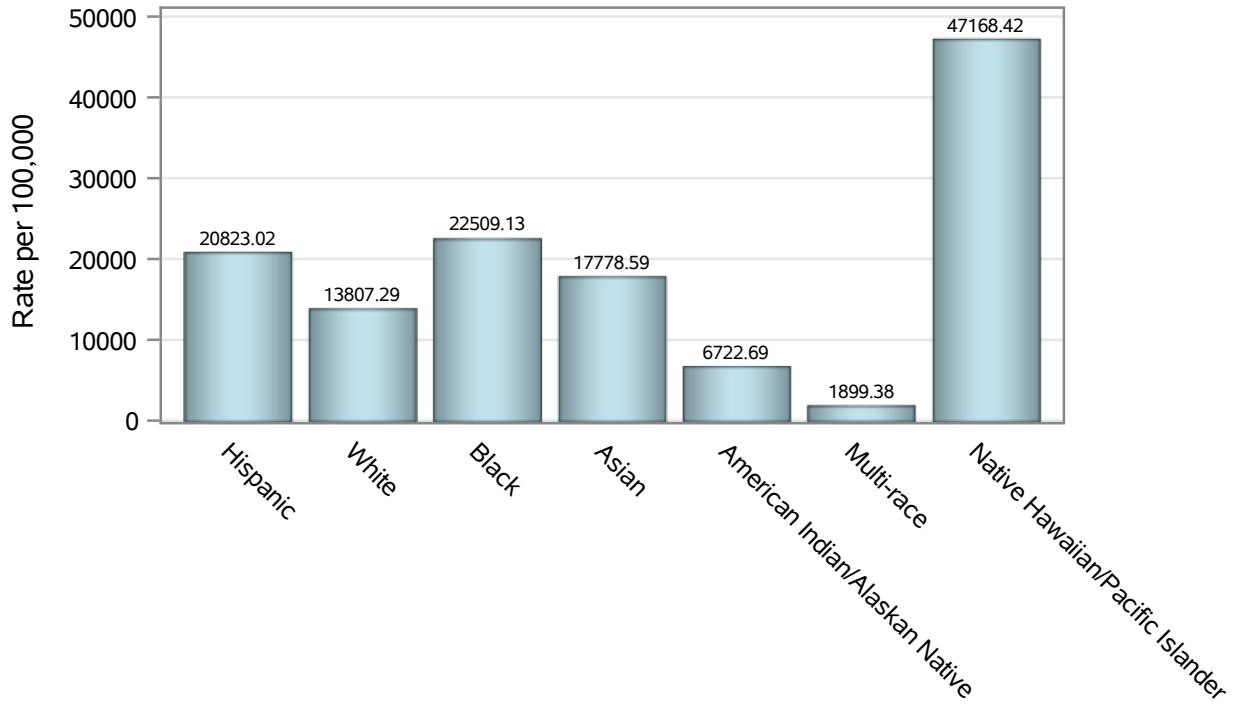
Note3: Hospitalizations are regardless of deceased status; Deaths are regardless of hospitalization status

Investigations are ongoing; data are subject to change.

Reporting through 30MAY2022

Henderson zip codes include 89002, 89011, 89012, 89014, 89015, 89044, 89052, 89074, 89119, 89120, 89122, 89123, 89124, 89183.

Case Race/Ethnicity Rates in Henderson

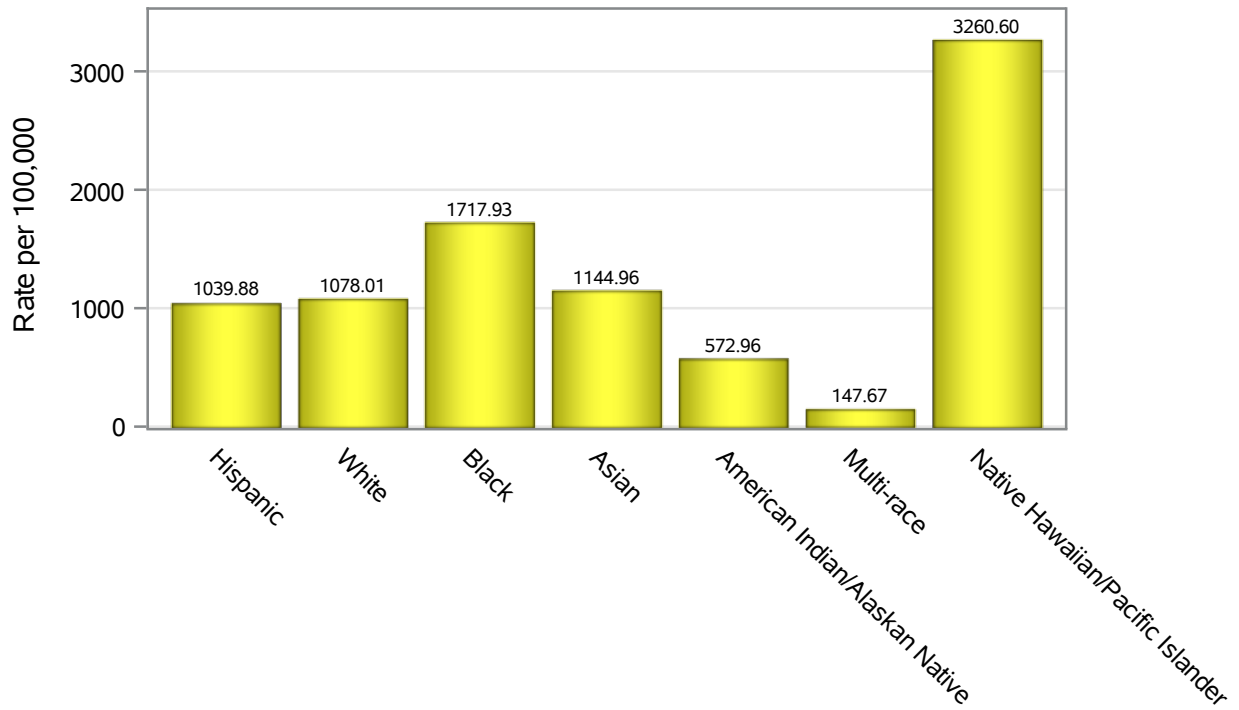


Investigations are ongoing; data are subject to change.

Reporting through 30MAY2022

Henderson zip codes include 89002, 89011, 89012, 89014, 89015, 89044, 89052, 89074, 89119, 89120, 89122, 89123, 89124, 89183.

Hospitalization Race/Ethnicity Rates in Henderson

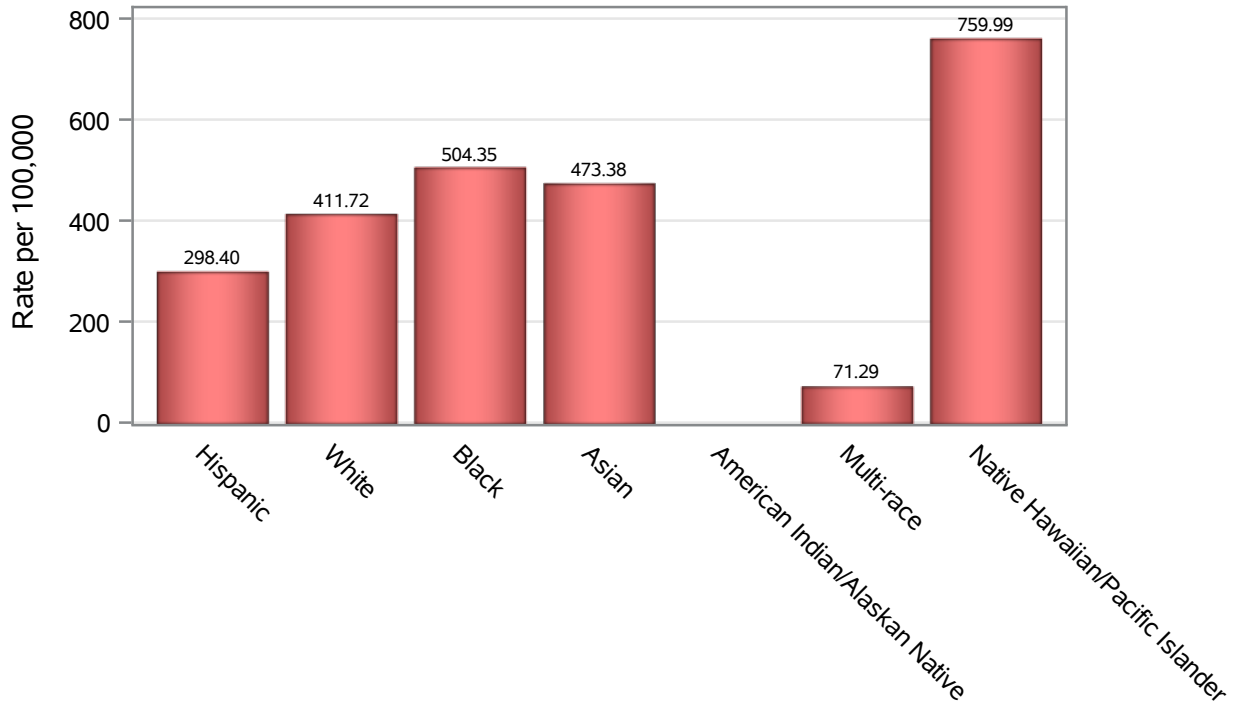


Investigations are ongoing; data are subject to change.

Reporting through 30MAY2022

Henderson zip codes include 89002, 89011, 89012, 89014, 89015, 89044, 89052, 89074, 89119, 89120, 89122, 89123, 89124, 89183.

Death Race/Ethnicity Rates in Henderson



Investigations are ongoing; data are subject to change.

Reporting through 30MAY2022

Henderson zip codes include 89002, 89011, 89012, 89014, 89015, 89044, 89052, 89074, 89119, 89120, 89122, 89123, 89124, 89183.

Table 6: Race/Ethnicity and COVID19 in Henderson

Case Status	Race Ethnicity Categories	N	%	Population	Rate per 100,000
Cases	Hispanic	25331	23.0	121649	20823
	White	40243	36.5	291462	13807
	Black	8569	7.8	38,069	22509
	Asian	9239	8.4	51,967	17779
	American Indian/Alaskan Native	176	0.2	2,618	6722.7
	Multi-race	373	0.3	19,638	1899.4
	Native Hawaiian/Pacific Islander	1924	1.7	4,079	47168
	Unknown	24422	22.1	.	.
Hospitalizations	Hispanic	1265	20.0	121649	1039.9
	White	3142	49.8	291462	1078.0
	Black	654	10.4	38,069	1717.9
	Asian	595	9.4	51,967	1145.0
	American Indian/Alaskan Native	15	0.2	2,618	572.96
	Multi-race	29	0.5	19,638	147.67
	Native Hawaiian/Pacific Islander	133	2.1	4,079	3260.6
	Unknown	481	7.6	.	.
Deaths	Hispanic	363	17.6	121649	298.40
	White	1200	58.2	291462	411.72
	Black	192	9.3	38,069	504.35
	Asian	246	11.9	51,967	473.38
	American Indian/Alaskan Native	8	0.4	2,618	.
	Multi-race	14	0.7	19,638	71.29
	Native Hawaiian/Pacific Islander	31	1.5	4,079	759.99
	Unknown	7	0.3	.	.

Note1: Population data source for calculating rate estimates: U.S. Census Bureau, ACS 5-year estimate.

Note2: Rates for categories with fewer than 12 cases are suppressed due to high relative standard error.

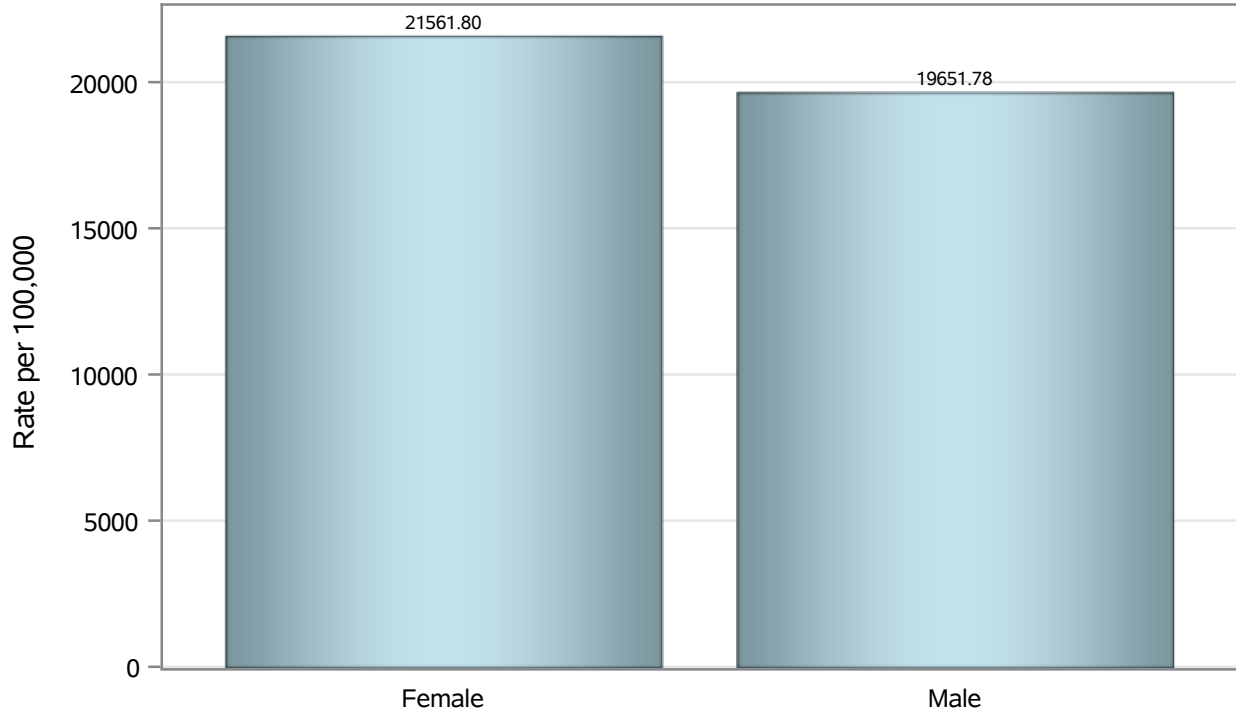
Note3: Hospitalizations are regardless of deceased status; Deaths are regardless of hospitalization status

Investigations are ongoing; data are subject to change.

Reporting through 30MAY2022

Henderson zip codes include 89002, 89011, 89012, 89014, 89015, 89044, 89052, 89074, 89119, 89120, 89122, 89123, 89124, 89183.

Case Birth Sex Rates in Henderson

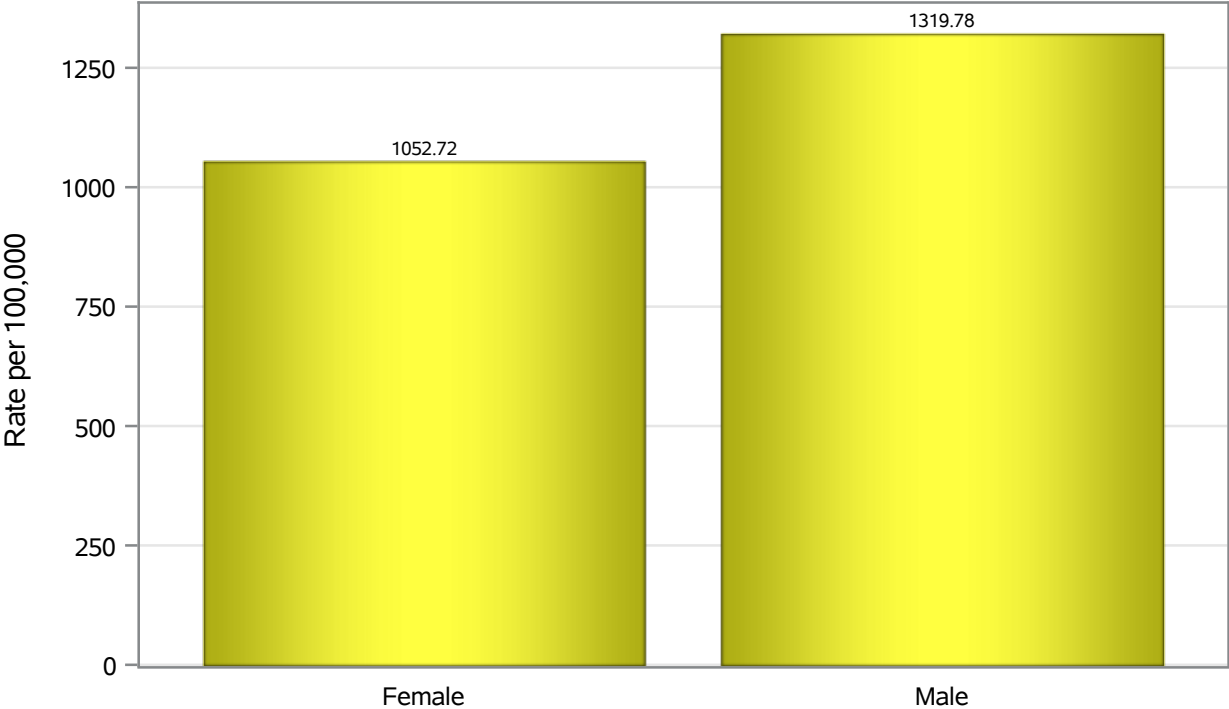


Investigations are ongoing; data are subject to change.

Reporting through 30MAY2022

Henderson zip codes include 89002, 89011, 89012, 89014, 89015, 89044, 89052, 89074, 89119, 89120, 89122, 89123, 89124, 89183.

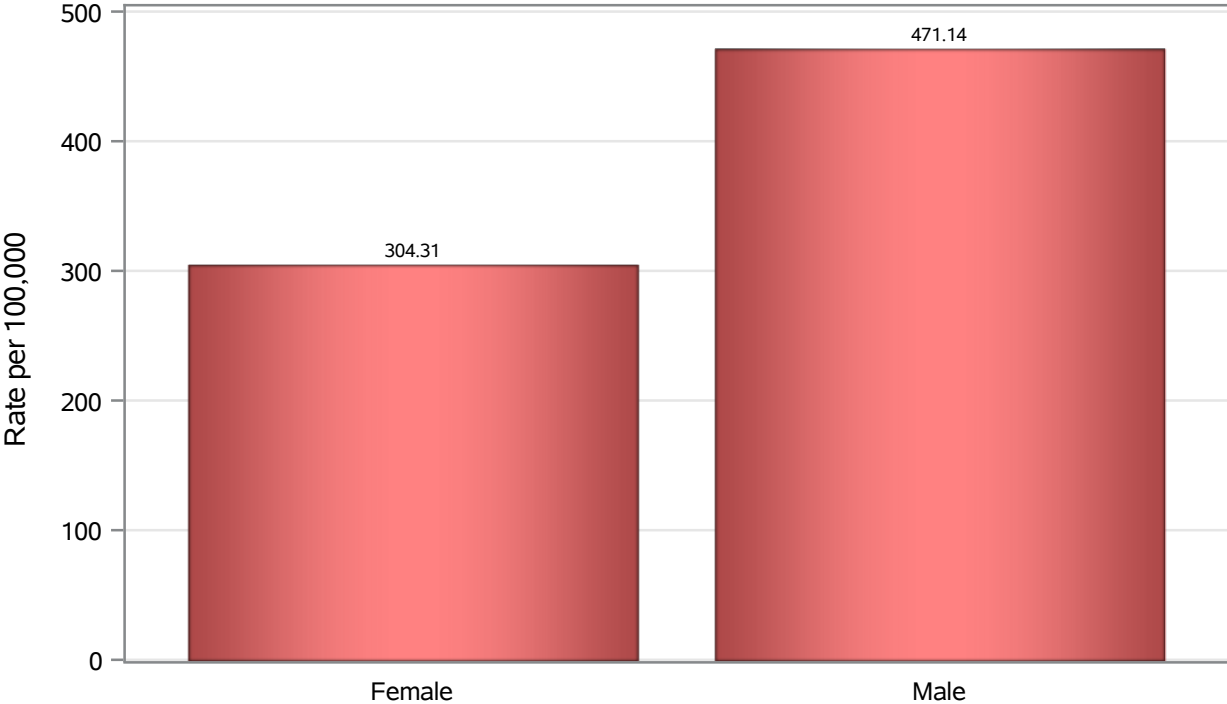
Hospitalization Birth Sex Rates in Henderson



Investigations are ongoing; data are subject to change.
Reporting through 30MAY2022

Henderson zip codes include 89002, 89011, 89012, 89014, 89015, 89044, 89052, 89074, 89119, 89120, 89122, 89123, 89124, 89183.

Death Birth Sex Rates in Henderson



Investigations are ongoing; data are subject to change.
Reporting through 30MAY2022

Henderson zip codes include 89002, 89011, 89012, 89014, 89015, 89044, 89052, 89074, 89119, 89120, 89122, 89123, 89124, 89183.

Table 7: Birth Sex and COVID19 in Henderson

Case Status	Birth Sex Categories	N	%	Population	Rate per 100,000
Cases	Female	57534	52.2	266833	21562
	Male	52056	47.2	264892	19652
	Unknown	687	0.6	.	.
Hospitalizations	Female	2809	44.5	266833	1052.7
	Male	3496	55.4	264892	1319.8
	Unknown	9	0.1	.	.
Deaths	Female	812	39.4	266833	304.31
	Male	1248	60.6	264892	471.14
	Unknown	1	0.0	.	.

Note1: Population data source for calculating rate estimates: U.S. Census Bureau, ACS 5-year estimate.

Note2: Rates for categories with fewer than 12 cases are suppressed due to high relative standard error.

Note3: Hospitalizations are regardless of deceased status; Deaths are regardless of hospitalization status

Investigations are ongoing; data are subject to change.

Reporting through 30MAY2022

Henderson zip codes include 89002, 89011, 89012, 89014, 89015, 89044, 89052, 89074, 89119, 89120, 89122, 89123, 89124, 89183.